

CERTIFICATE OF LOCATION OF GOVERNMENT CORNER

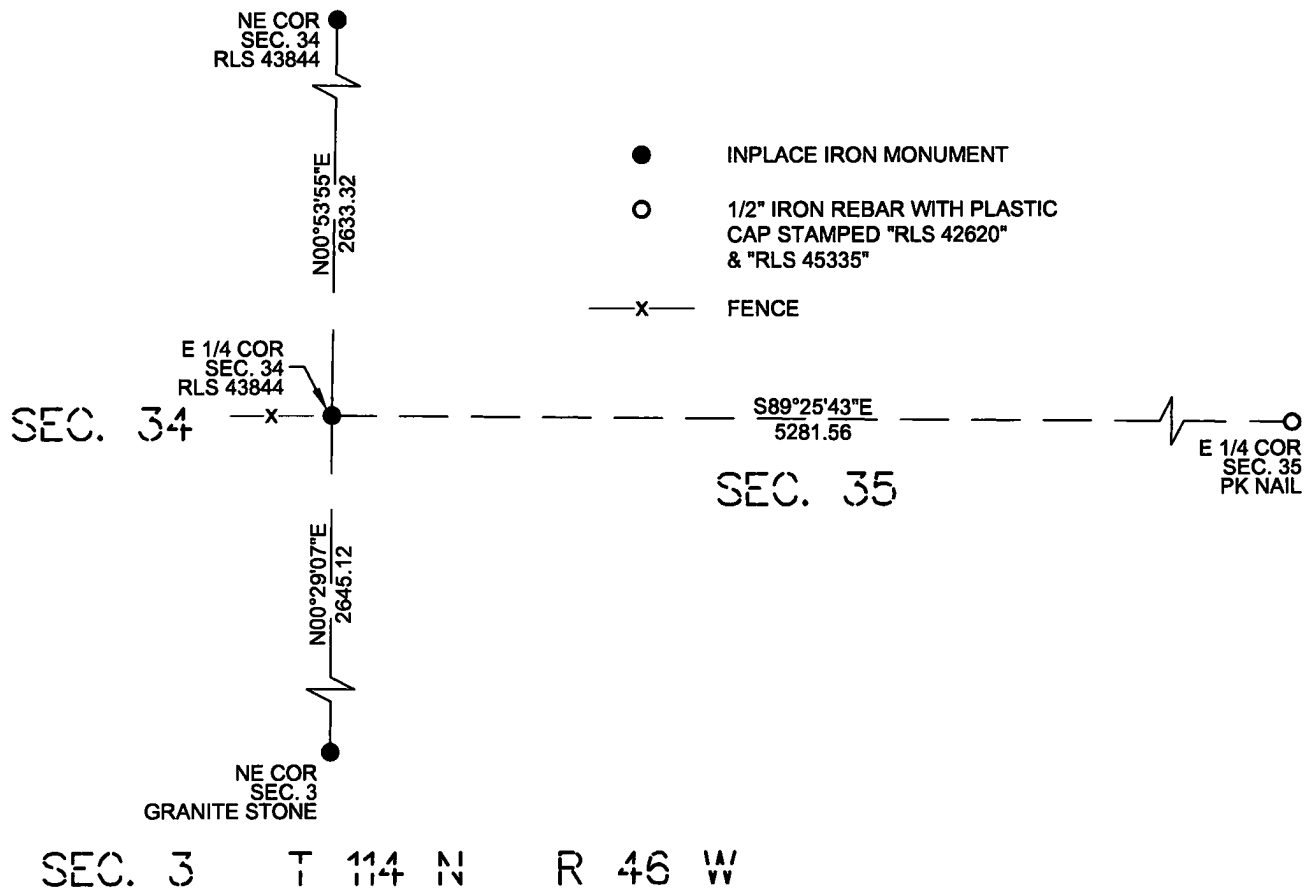
E 1/4 Corner of Section 34 , Township 115 North, Range 46 West of the 5th P.M. State of Minnesota, County of Yellow Medicine .

At the corner location shown on the sketch:

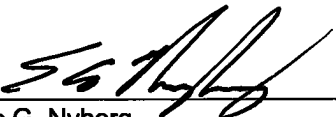
On 6/4/2024 found a 5/8" iron with plastic cap stamped "RLS 43844"

On 6/4/2024 placed a left as is.

SKETCH OF REFERENCE TIES



I hereby certify that this survey, plan, report was prepared by me or under my direct supervision and that I am a duly Registered Land Surveyor under the laws of the State of Minnesota.


Eric G. Nyberg

Date October 10th, 2024 License No. 45335

Doc# 283077 Fee: \$0.00 2 Pages

Property & Public Services
Property Records Division
Yellow Medicine County, Minnesota
I hereby certify that the within instrument
was filed on October 17, 2024 at 10:30 AM

Janel Timm, Yellow Medicine County Recorder

By Marit Nordang Deputy

Statement of evidence for this corner position is on the back of this page

(FILE NO. 12054-2)

STATEMENT OF EVIDENCE

East Quarter Corner of Section 34, Township 115 North, Range 46 West, Yellow Medicine County, Minnesota.

Nyberg Surveying Contacted the following offices for survey information on this corner:

MN Secretary of State
Yellow Medicine County Records Office
Yellow Medicine County Highway Department
Minnesota Department of Transportation
Marihart Land Surveying
Bueltel Moseng Land Surveying

- 1871 The U.S. General Land Office field notes, on file in the MN Secretary of State's Office, describe this original corner as set a post for 1/4 section corner raised mound as per instructions.
- 2020 Daniel Bueltel with Bueltel Moseng Land Surveying performed a survey in Section 3, Township 114 North, Range 46 West. He indicates a found 5/8" rebar stamped RLS 43844 at this location.
- 2024 The 1/2" rebar with cap stamped RLS 43844 was found at the centerline of road and fit well with the fence line west of this corner. The 1/2" rebar was accepted as the East Quarter Corner of Section 34.

Yellow Medicine County Coordinates
NAD 83, 1996 Adjustment

N 167292.6351
E 375396.5146