

CERTIFICATE OF LOCATION OF GOVERNMENT CORNER

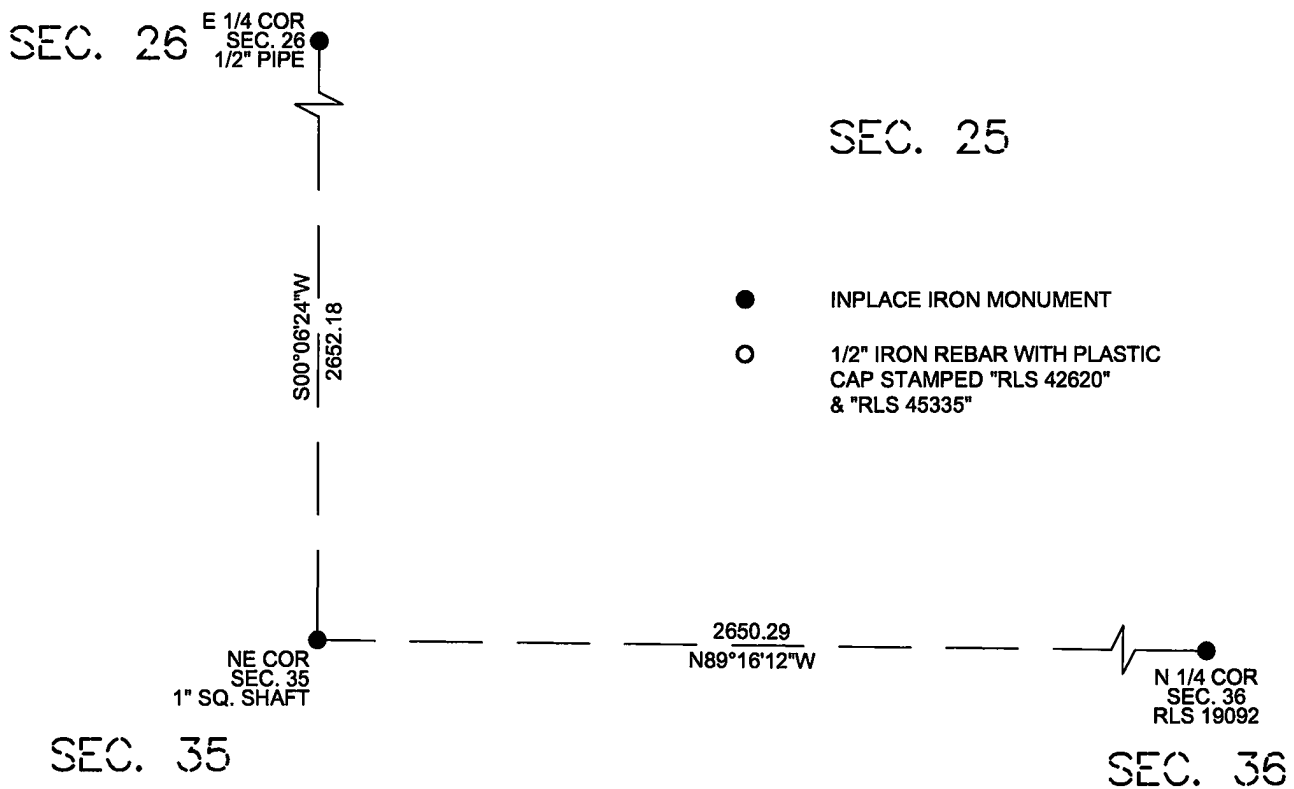
NE Corner of Section 35 , Township 115 North, Range 46 West of the 5th P.M. State of Minnesota, County of Yellow Medicine .

At the corner location shown on the sketch:

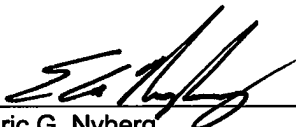
On 6/4/2024 found a 1" square shaft.

On 6/4/2024 placed a left as is.

SKETCH OF REFERENCE TIES



I hereby certify that this survey, plan, report was prepared by me or under my direct supervision and that I am a duly Registered Land Surveyor under the laws of the State of Minnesota.


Eric G. Nyberg

Date October 10th, 2024 License No. 45335

Doc# 283079 Fee: \$0.00 2 Pages

Property & Public Services
Property Records Division
Yellow Medicine County, Minnesota
I hereby certify that the within instrument was filed on October 17, 2024 at 10:30 AM

Jane! Timm, Yellow Medicine County Recorder

By Marit Nordang Deputy

Statement of evidence for this corner position is on the back of this page

(FILE NO. 12054-1)

STATEMENT OF EVIDENCE

Northeast Corner of Section 35, Township 115 North, Range 46 West, Yellow Medicine County, Minnesota.

Nyberg Surveying Contacted the following offices for survey information on this corner:

MN Secretary of State
Yellow Medicine County Records Office
Yellow Medicine County Highway Department
Minnesota Department of Transportation
Marihart Land Surveying
Bueltel Moseng Land Surveying

- 1871 The U.S. General Land Office field notes, on file in the MN Secretary of State's Office, describe this original corner as a set post for the corner to secs 25, 26, 35 & 36 raised mound as per instructions.
- 1988 A Certificate of Location for this corner was filed September 27th ,1988 as Document #193904.
- 2024 Field computations provided by Roy Marihart indicates this being an inplace monument with ties to adjacent section corners. A 1" square shaft was found at the intersection of County Road 14 and 230th Avenue and its position fit ties to the Marihart field notes and the Certificate of Location.

Yellow Medicine County Coordinates
NAD 83, 1996 Adjustment
N 169889.7109
E 380689.4370