

CERTIFICATE OF LOCATION OF GOVERNMENT CORNER

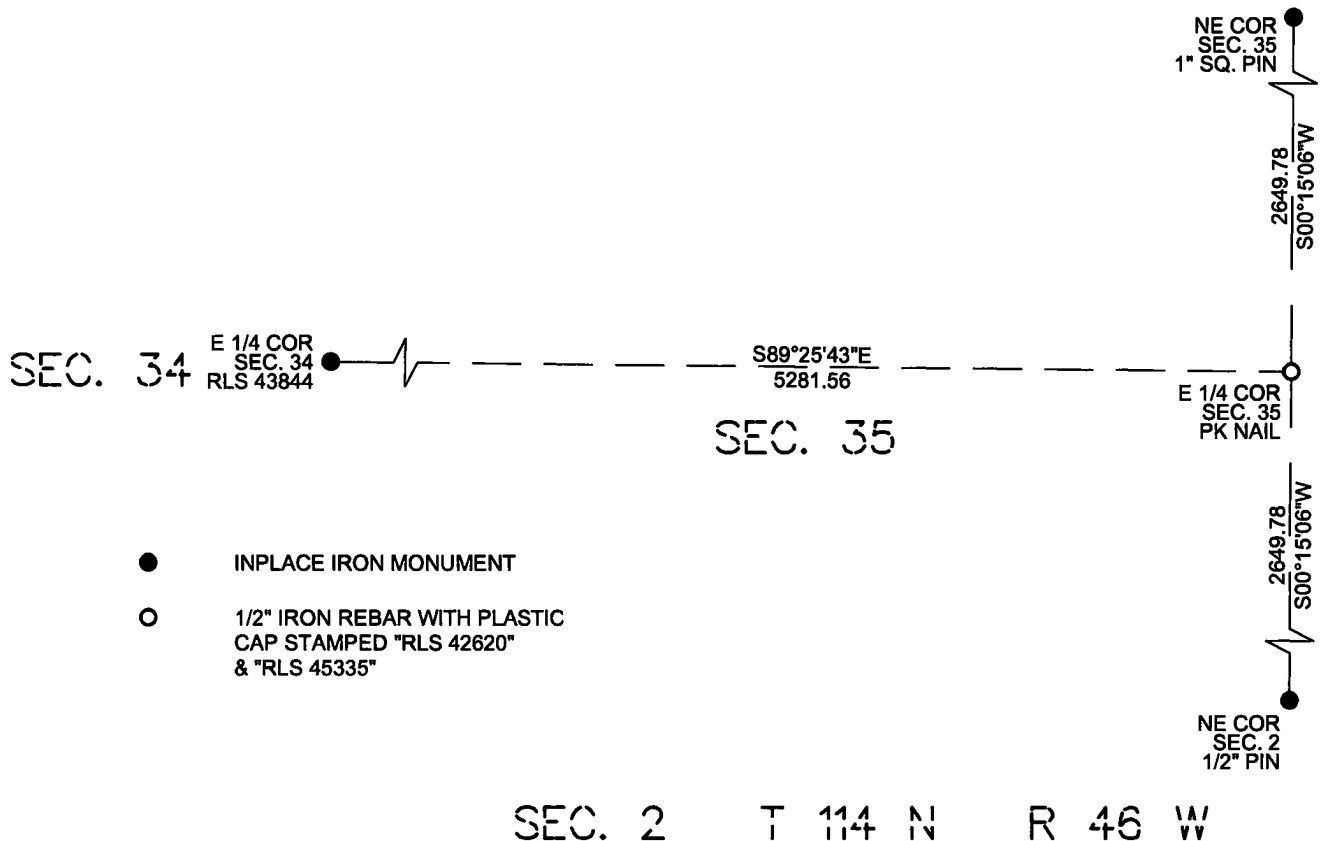
E 1/4 Corner of Section 35, Township 115 North, Range 46 West of the 5th P.M. State of Minnesota, County of Yellow Medicine.

At the corner location shown on the sketch:

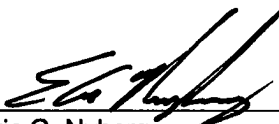
On _____ found a _____

On 6/24/2024 placed a PK nail.

SKETCH OF REFERENCE TIES



I hereby certify that this survey, plan, report was prepared by me or under my direct supervision and that I am a duly Registered Land Surveyor under the laws of the State of Minnesota.


Eric G. Nyberg

Date October 10th, 2024 License No. 45335

Doc# 283080 Fee: \$0.00 2 Pages

Property & Public Services
Property Records Division
Yellow Medicine County, Minnesota
I hereby certify that the within instrument was filed on October 17, 2024 at 10:30 AM

Janel Timm, Yellow Medicine County Recorder

By Marit Nordang Deputy

Statement of evidence for this corner position is on the back of this page

(FILE NO. 12054-2)

STATEMENT OF EVIDENCE

East Quarter Corner of Section 35, Township 115 North, Range 46 West, Yellow Medicine County, Minnesota.

Nyberg Surveying Contacted the following offices for survey information on this corner:

MN Secretary of State
Yellow Medicine County Records Office
Yellow Medicine County Highway Department
Minnesota Department of Transportation
Marihart Land Surveying
Bueltef Moseng Land Surveying

- 1871 The U.S. General Land Office field notes, on file in the MN Secretary of State's Office, describe this original corner as set a post for 1/4 section corner, from which a 4" Ash bears S 62 1/2° W, 22 links and a 3" Ash bears N 27° E, 1.00 chains.
- 2024 Field computations provided by Roy Marihart indicates he set this corner using single proportion method. Nothing was found at this location and a PK nail was set at the single proportion location and was accepted as the East Quarter Corner of Section 35.

Yellow Medicine County Coordinates
NAD 83, 1996 Adjustment
N 167239.9555
E 380677.8020