

Property & Public Services
Property Records Division
Yellow Medicine County, Minnesota
I hereby certify that the within instrument
was filed on March 3, 2025 at 9:15 AM

Janel Timm, Yellow Medicine County Recorder

By Marit Nordang Deputy

CERTIFICATE OF LOCATION OF GOVERNMENT CORNER

East Quarter

Corner of Section **12**, Township **116**, Range **41**

Fifth Principal Meridian, State of Minnesota, County of **Yellow Medicine**

At the corner location shown on the sketch:

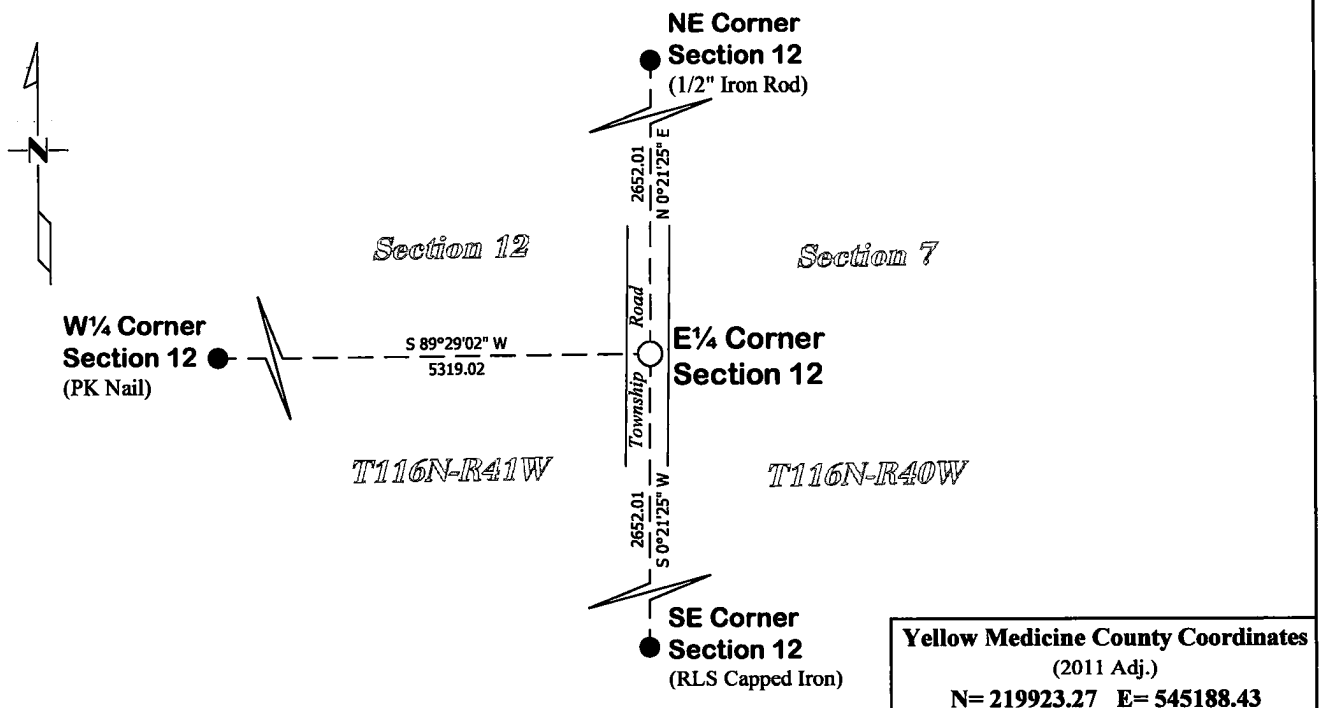
☒ On Feb. 12, 2025 found a Nothing
DATE

☐ left monument as found

☐ lowered monument

☐ removed monument (explain)

☒ On Feb. 12, 2025 placed a 5/8" x 15" Rebar with Plastic Cap Stamped "46169 46171 62454"
DATE



Statement of evidence for this corner location is on back of this page.

I hereby certify that this survey, plan, or report was prepared by me or under my direct supervision and that I am a duly Licensed Land Surveyor under the laws of the state of Minnesota.

Signature

A. Van Beck

Date

2-25-2025

A. Van Beck, Minnesota Registered Land Surveyor #62454

STATEMENT OF EVIDENCE

East Quarter Corner of Section 12, T116N-R41W

- 1858** William J Neely was contracted by the United States Government Land Office to perform the Original Public Land Survey of this township line. Neely records in his field notes "In marsh" and set a witness post 2.00 chains north.
- July 1884** Jonah Peterman, County Surveyor, while doing survey work in Section 7, T116N-R40W, notes on County Survey Record Book A, page 26 "stone" at the corner and notes equal distances from the NW corner and SW Corner of Section 7.
- Feb. 12, 2025** Bonnema Runke Stern field crew searched the area of the corner position with a metal locator, however, no existing monumentation was found. No large scale excavation was performed at the corner position. Leo A. Van Beck, LS 62454, positioned the corner on a straight line and at equal distances per County Survey Record Book A, page 26. A 5/8" x 15" iron rod with a "46169 46171 62454" Stamped Plastic Cap was set at the corner position. This position fits well with occupation along the east/west quarter line of Section 7.