

CERTIFICATE OF LOCATION OF GOVERNMENT CORNER

NORTH QUARTER Corner of Section 9
Township 116N, Range 40W, 5th P.M.
COUNTY OF YELLOW MEDICINE, STATE OF MINNESOTA

At the corner location shown on the sketch:

☒ On 08/01/2025 found a 1/2" rebar marked 19092

☒ left as found, ☐ lowered monument, ☐ removed monument

Doc# 284716 Fee: \$0.00 2 Pages

Property & Public Services

Property Records Division

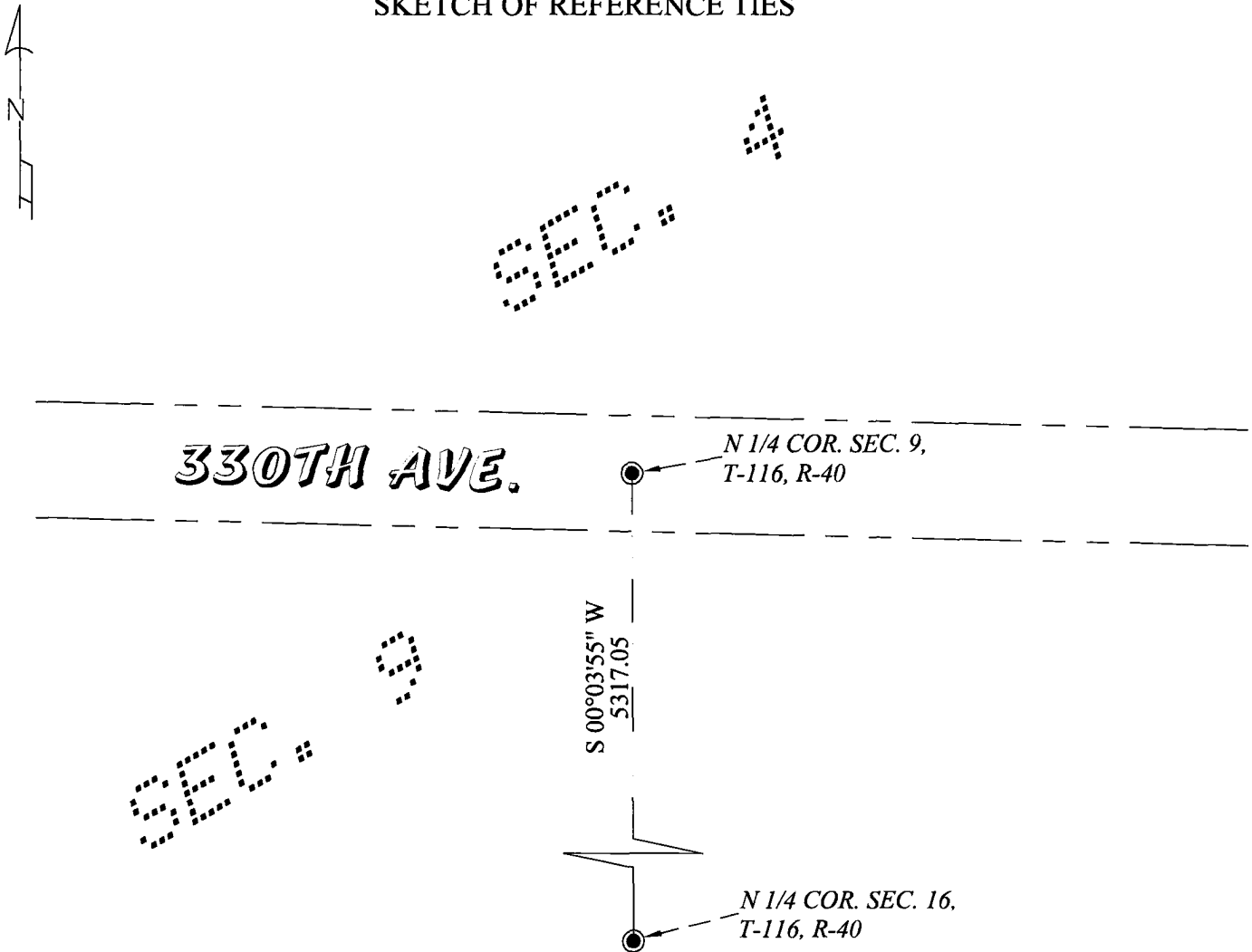
Yellow Medicine County, Minnesota

I hereby certify that the within instrument
was filed on August 11, 2025 at 11:30 AM

Janel Timm, Yellow Medicine County Recorder

Alvin J. Fischer

SKETCH OF REFERENCE TIES



Statement of evidence relative to this corner location is on sheet 2 of 2

I hereby certify that this survey, plan, or report was prepared by me or under my direct supervision and that I am a duly Licensed Land Surveyor under the laws of the State of Minnesota.

B. O'Malley
Benjamin C. O'Malley
MN Licensed Land Surveyor No. 42300

Date: 08/07/2025

YELLOW MEDICINE COUNTY COORDINATE,
NAD 83, 2011 PROJECTION
N= 222671.003
E= 558076.394

LATITUDE (N) = 44°52'40.41439"
LONGITUDE (W) = 95°40'33.53038"

Coordinates derived by RTK GPS (MN VRS Correction)

Statement of Evidence for the North Quarter Corner of Section 09, T116N, R40W.

1865 - The Original Public Land Survey was performed by Davis & Webb.

December 22, 1894 - John Norgaard prepared a survey of Section 4. He states that the South Quarter corner of Section 4 is located on line and at equal distance between the Southeast and Southwest corners of Section 4. It does not state what monument is at the corner. The survey shows a distance of 2681 feet to the Southeast and Southwest corners of Section 4.

November 12, 2013 - Certificate of survey performed by Roy Marihart (R.L.S. 19092) shows a bearing and distance of N 89°49'48" W, 2680.20 feet to the Northwest corner of Section 9, a bearing and distance of S 89°49'55" E, 2679.99 feet to the Northeast corner of Section 9 and a bearing and distance of S 00°31'35" E, 5316.92 feet to the South Quarter corner of Section 9.

August 1, 2025 - O'Malley & Kron Land Surveyors, Inc. performed a survey in Section 9. The area of the corner was searched and a 1/2" rebar marked 19092 was found at the location shown on the Marihart survey.

Analysis - The Marihart monument fits well with the 1894 survey distances and is accepted as marking the corner location.