

Doc# 284732 Fee: \$0.00 4 Pages
Property & Public Services
Property Records Division
Yellow Medicine County, Minnesota
I hereby certify that the within instrument
was filed on August 12, 2025 at 1:00 PM

Janel Timm, Yellow Medicine County Recorder

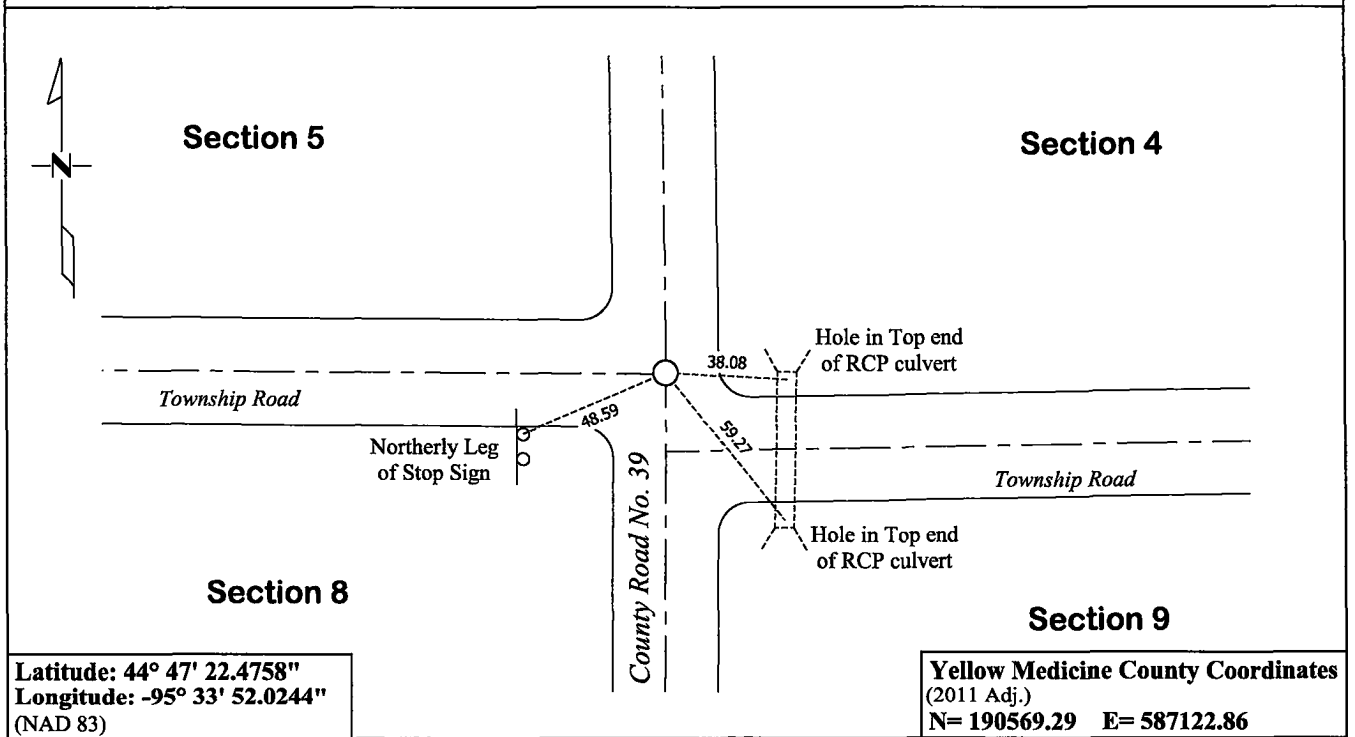
Alvin L Fischer

CERTIFICATE OF LOCATION OF GOVERNMENT CORNER

Northeast Corner of Section **8**, Township **115**, Range **39**
Fifth Principal Meridian, State of Minnesota, County of **Yellow Medicine**

At the corner location shown on the sketch:

- ☒ On June 5, 2024 found a 6" x 6" Jasper Stone
DATE
- ☒ left monument as found ☐ lowered monument ☐ removed monument (explain)
- ☒ On January 28, 2025 placed a 5/8" x 15" Rebar with a 46169-46171-62454 Stamped Plastic Cap
DATE
at the Location of the 6" x 6" Jasper Stone



Statement of evidence for this corner location is on back of this page.

I hereby certify that this survey, plan, or report was prepared by me or under my direct supervision and that I am a duly Licensed Land Surveyor under the laws of the state of Minnesota.

Signature Matthew D. Runke Date 8/11/25
Matthew D. Runke, Minnesota Registered Land Surveyor #46171

STATEMENT OF EVIDENCE

Northeast Corner of Section 8, T115N-R39W

(Page 1 of 3)

- 1864** Chas. E. Davis & J.W. Webb Jr. were contracted by the United States Government Land Office to perform the Original Public Land Survey in this township. Davis and Webb record in their field notes "Set post in mound with pits for corner to Sec's 4, 5, 8 & 9".
- May 5, 1874** Ole Quam, County Surveyor, records in County Surveyors Record Book A, page 7 that he used this corner as part of his survey and dimensions to this corner position but does not mention what type of monument was found.
- June 1, 1874** Ole Quam, County Surveyor, records in County Surveyors Record Book A, Page 8, dimensions to this corner position, but does not mention what type of monument was found.
- June 25, 1890** Jonah Peterman, County Surveyor, records in County Surveyors Record Book A, Page 40, "government corner" and dimensions to this corner position.
- 1899-1901** John Norgaard, County Surveyor, records in the index of County Surveyors Record Book B that he "re-surveyed all the section corners except the township corners in the county" and "the monuments are all jasper granite 2 feet long and 6in x 6in." On page 11 he notes dimensions to this corner position. On page 75 he notes "Found stake and stone at the intersection of roads set by adjoining landowners in the government mound when the corner were plain. Set top of monument level with ground."
- March 1912** John Norgaard, County Surveyor, records in County Surveyors Record Book A, Page 260, "Found Jasper monument set by me 12 or 13 years ago" at this corner and dimensions to this corner position.
- 1914** John Norgaard, County Surveyor, records in County Surveyors Record Book A, page 332, dimensions to this corner position, but does not mention what type of monument was found.
- 1924** John Norgaard, County Surveyor, records in County Surveyors Record Book A, page 454, two section corner witness ties to this corner position.
- 1924** John Norgaard, County Surveyor, records in County Surveyors Record Book A, page 476 dimensions to this corner position, along with 2 Section Corner witness ties, but does not mention what type of monument was found.
- March 1931** John Norgaard, County Surveyor, records in County Surveyors Record Book A, Page 237, dimensions to this corner position, along with 2 Section Corner witness ties, but does not mention what type of monument was found.
- 1950's** Yellow Medicine County Highway Engineer Road Plans for County Road No. 39, County Project No. 56-36, Sheet 3 notes "Cor. Ass." at this corner and lists the station of this corner position.
- 1959** Yellow Medicine County Highway Engineer Section Corner ties note "Assumed" at this corner position along with 7 section corner witness ties.

STATEMENT OF EVIDENCE

Northeast Corner of Section 8, T115N-R39W

(Page 2 of 3)

- 1960** Yellow Medicine County Highway Engineer Field Book for State Project 87-639-01, Transit-Topo for CSAH 39 notes "Sec. Cor Assumed" and "Nail" at this corner along with 3 Section Corner witness ties.
- 1960** Yellow Medicine County Highway Engineer Road Plans for County Road No. 39 State Project No. 87-639-01, Sheet 6, notes "Sec. Cor. Assumed" at this corner and lists the stationing of this corner position.
- September 30, 1971** John E. Swenson, LS 10460 prepared a Certificate of Location of Government Corner and notes he found a "6in x 6in x 24in Granite Monument 3.0' Below Road Surface" and placed a "Minnesota Highway Department cast iron monument 0.2ft. below road surface over granite monument" at this corner position. He also recorded 4 section corner witness ties.
- 1974** Minnesota Department of Transportation Highway Right of Way Map No. 180-3C, sheet 1 notes a "Cast Iron Mon." at this corner and dimensions to at this corner position.
- 1974±** A Minnesota Department of Transportation Work Sheet for Section 5, notes a "MNDT CIM" at this corner and dimensions to this corner position.
- April 1974** Robert C. Jones, LS 11864 with the Minnesota Department of Transportation prepared section breakdown sheets for Sections 4 and 9 as part of State Project 8701-18 for Trunk Highway No. 23 and notes "Cast Iron Mon." at this corner position. He also lists the project coordinates of this corner and the azimuth and distances between the adjacent section corners.
- 1975** Robert C. Jones, LS 11864, with the Minnesota Department of Transportation prepared a survey report for State Project 8701-18 for Trunk Highway No. 23. In this report he notes a "Cast Iron Monument" at this corner, along with the project coordinates, witness ties and dimensions to this corner position.
- March 1, 1991** Lyle E. Moseng, LS11943, while performing surveys in sections 4 and 9, notes "Monument Found" at this corner and dimensions to this corner position. In his field book he notes "My Rerod set on Top of Minn Hwy Dept C.I.M" at this corner.
- Unknown Date** Westwood Professional Services provided a CAD file of field work in Sections 3 & 4 and notes "FIP CIM" at this corner position.
- 2023** Yellow Medicine County Highway Engineer Road Plans for County Road No. 39, State Project No. 087-639-007, Sheet 17 notes the corner, but does not mention what type of monument was found.

STATEMENT OF EVIDENCE

Northeast Corner of Section 8, T115N-R39W

(Page 3 of 3)

June 5, 2024

Matthew D. Runke, LS 46171, found no existing surface monumentation at this corner position as the road was under construction. With the aid of a backhoe a 3.2' deep hole was dug that covered an area extending 3' North, 5' South, 2' East, and 2' West of the location of the former Cast Iron Monument. At a depth of 3.2' a 6" x 6" square cut red granite (Jasper) stone was found tipped to the north. The base of the stone is directly under the former cast iron monument position. This Jasper stone was placed by Norgaard between 1899-1901 at the location of a found stake and stone set by the adjoining landowners in the government mound when the corner was plain. The 6" x 6" Jasper stone is the best available evidence of the location of the Original Government Land Office Survey corner. A 5/8" x 15" Rebar with a "46169-46171-62454" stamped plastic cap was set at the location of the 6" x 6" Jasper stone, near the surface of the road once the road construction was completed. The coordinates of this section corner were recorded in the Yellow Medicine County Coordinate System (2011 adjustment) and the Latitude and Longitude coordinates listed were derived using the MnCON software.