

Doc# 284733 Fee: \$0.00 2 Pages

Property & Public Services  
Property Records Division  
Yellow Medicine County, Minnesota  
I hereby certify that the within instrument  
was filed on August 12, 2025 at 1:00 PM

Janel Timm, Yellow Medicine County Recorder

Alison J. Fischer

## CERTIFICATE OF LOCATION OF GOVERNMENT CORNER

**East Quarter** Corner of Section **8**, Township **115**, Range **39**

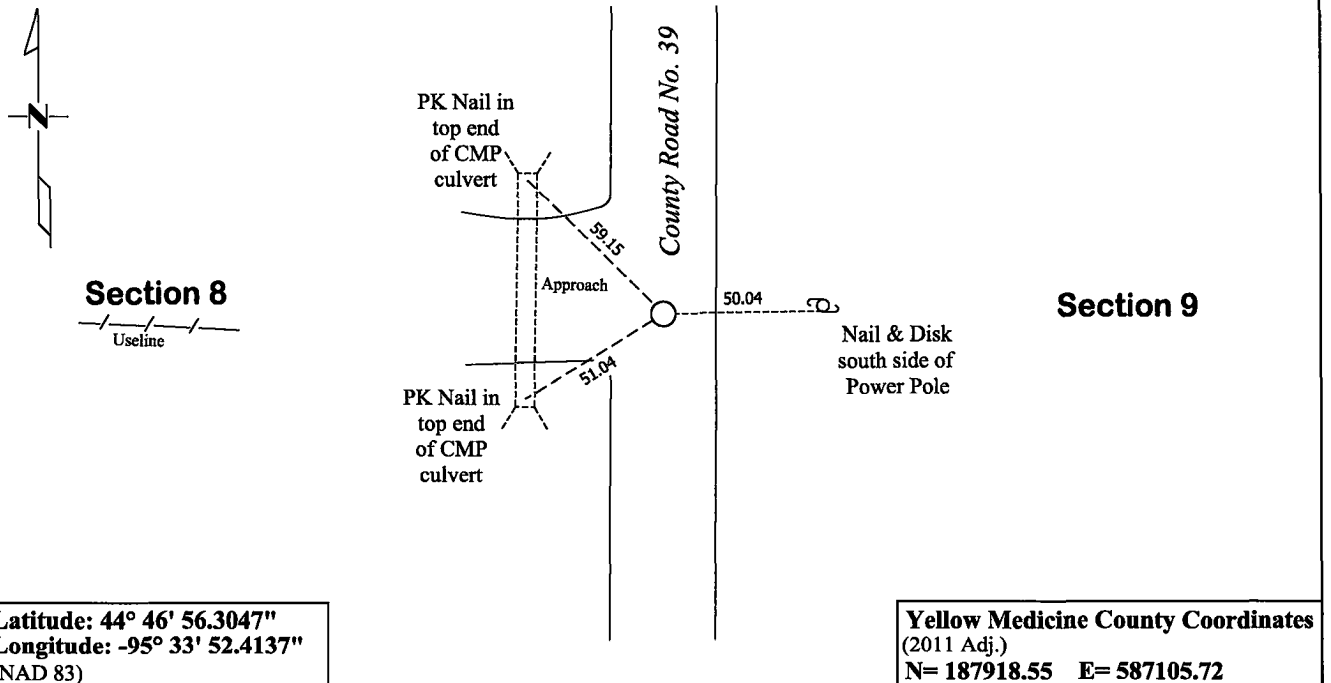
**Fifth** Principal Meridian, State of Minnesota, County of **Yellow Medicine**

At the corner location shown on the sketch:

☒ On June 5, 2024 found No Existing Monument  
DATE

☐ left monument as found ☐ lowered monument ☐ removed monument (explain)

☒ On January 28, 2025 placed a 5/8" x 15" Rebar with a 46169-46171-62454 Stamped Plastic Cap  
DATE  
at the location of the former iron pipe



Statement of evidence for this corner location is on back of this page.

I hereby certify that this survey, plan, or report was prepared by me or under my direct supervision and that I am a duly Licensed Land Surveyor under the laws of the state of Minnesota.

Signature

Matthew D. Runke

Date

8/11/25

Matthew D. Runke, Minnesota Registered Land Surveyor #46171

# ***STATEMENT OF EVIDENCE***

---

## ***East Quarter Corner of Section 8, T115N-R39W***

- 1864** Chas E. Davis & J. W. Webb Jr were contracted by the United States Government Land Office to perform the Original Public Land Survey in this township. Davis & Webb record in their field notes "Set post in mound with pits for quarter section corner."
- May 5, 1874** Ole Quam, County Surveyor, records in County Surveyors Record Book A, page 7 "quarter post" at this corner and dimensions to this corner position.
- June 1, 1874** Ole Quam, County Surveyor, records in County Surveyors Record Book A, page 8 "quarter post" at this corner and dimensions to this corner position.
- 1899-1901** John Norgaard, County Surveyor, records in the index of County Surveyors Record Book B that he "re-surveyed all the section corners except the township corners in the county" and "the monuments are all jasper granite 2 feet long and 6in x 6in." On page 11 he notes a dimension along the east line of this section but does not show this corner position.
- 1914** John Norgaard, County Surveyor, records in County Surveyors Record Book A, page 332 "Set iron rod at equal dist bet sec corners but not on line as the parties interested didn't care for the straight line."
- April 10, 1974** Robert. C. Jones, LS 11864 with the Minnesota Department of Transportation prepared a section breakdown sheet for Section 9 as part of State Project 8701-18 for Trunk Highway No. 23 and notes "Assumed in field" at this corner along with the project coordinates of this corner position and the azimuth and distances between the adjacent section corners.
- March 1, 1991** Lyle E. Moseng, LS 11943, while performing a survey in Section 9, notes a "Monument Found" at this corner position. In his field book he notes "I found a ½in iron pipe" at this corner.
- May 24, 2017** Daniel L. Bueltel, LS 43844, while performing a survey in Section 8 notes a "1 in pipe" at this corner and dimensions to this corner position.
- June 5, 2024** Matthew D. Runke, LS 46171, found no existing surface monumentation at this corner position as the road was under construction. With the aid of a backhoe a 3.3' deep hole was dug that covered an area extending 6' North, 7' South, 4' East, and 3' West of the location of the former 1" Iron Pipe. No additional evidence indicating the exact location of this section corner was recovered. It appears this area has been disturbed by prior road construction as we were unable to find the original topsoil layer and we encountered mixed soils the entire depth of the hole. The position of this corner was verified by using former County Surveyor records, surveys and Minnesota Department of Transportation records. The former 1" iron pipe was found to be 1.95' north and 0.27' east of a point midway and online between the NE and SE corners of this section and appears to be the best available evidence of the location of the Original Government Land Office Survey corner. A 5/8" x 15" Rebar with a "46169-46171-62454" stamped plastic cap was set at the location of the 1" iron pipe, near the surface of the road once the road construction was completed. The coordinates of this section corner were recorded in the Yellow Medicine County Coordinate System (2011 adjustment) and the Latitude and Longitude coordinates listed were derived using the MnCON software.