

**Property & Public Services
Property Records Division
Yellow Medicine County, Minnesota
I hereby certify that the within instrument
was filed on August 12, 2025 at 1:00 PM**

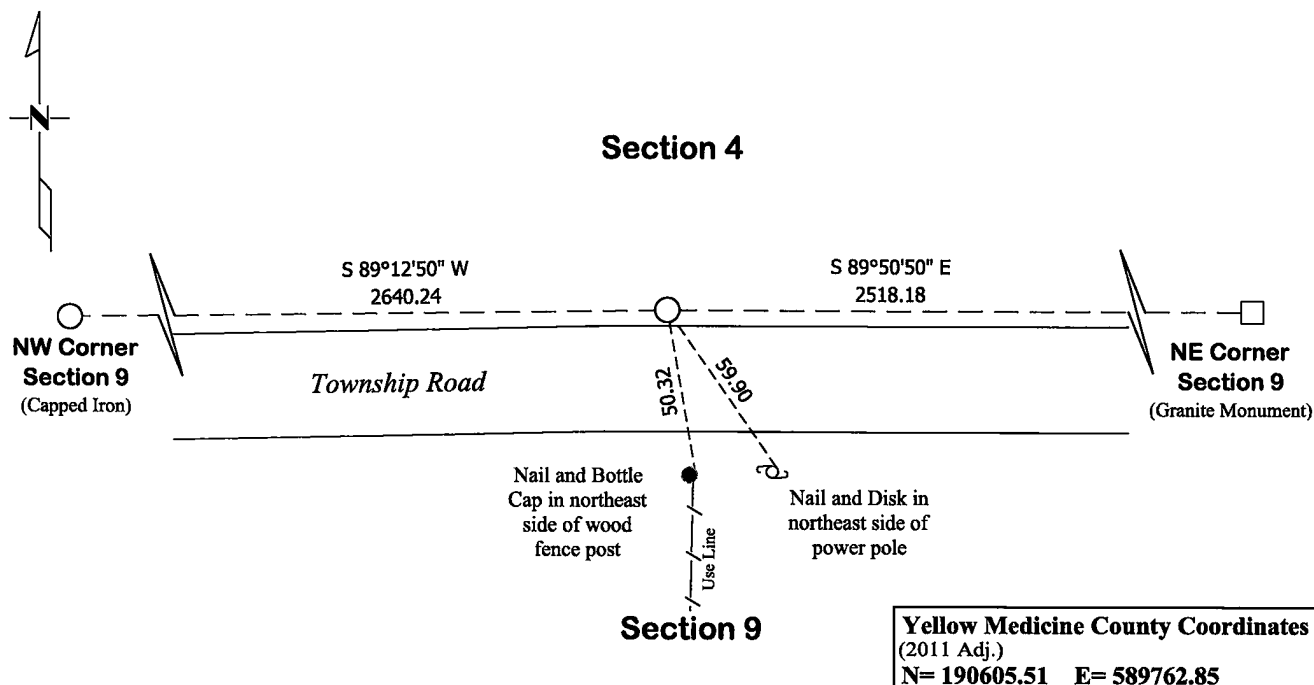
Abigail L. Fischer

North Quarter Corner of Section **9**, Township **115**, Range **39**
Fifth Principal Meridian, State of Minnesota, County of **Yellow Medicine**

☒ On July 15, 2025 found a Cast Iron Monument
DATE

☐ removed monument (explain)

☐ On _____ placed a
DATE



Statement of evidence for this corner location is on back of this page.

I hereby certify that this survey, plan, or report was prepared by me or under my direct supervision and that I am a duly Licensed Land Surveyor under the laws of the state of Minnesota.

Signature

Matthew Burke

Date _____

8/11/25

Matthew D. Runke, Minnesota Registered Land Surveyor #46171

STATEMENT OF EVIDENCE
North Quarter Corner of Section 9, T115N-R39W

(Page 1 of 3)

- 1864** Chas E. Davis & J. W. Webb Jr. were contracted by the United States Government Land Office to perform the Original Public Land Survey in this township. Davis & Webb record in their field notes "Set post in mound with pits for quarter section corner."
- June 1, 1874** Ole Quam, County Surveyor, records in County Surveyors Record Book A, page 8 "Quarter Post" at this corner and dimensions to this corner position.
- 1899-1901** John Norgaard, County Surveyor, records in the index of County Surveyors Record Book B that he "re-surveyed all the section corners except the township corners in the county" and "the monuments are all jasper granite 2 feet long and 6in x 6in." On page 11 he notes a dimension to this corner position.
- August 1909** John Norgaard, County Surveyor, records in County Surveyors Record Book A, page 201 "Found stone in mound as found by me about 12 years ago in govt mound" and dimensions to this corner position.
- August 26, 1910** John Norgaard, County Surveyor, records in County Surveyors Record Book A, page 222 the location of this corner and that he used it to position the 1/16 corner of the north line of the NE¼ of this section.
- 1915** The Great Northern Railway Company Railroad Right of Way Map No. 959D, Sheet No. 11 notes this corner position and lists the stationing of the section line crossing and the distance from this corner to the center line crossing but does not mention what type of monument was found.
- June 1918** John Norgaard, County Surveyor, records in County Surveyors Record Book A, page 406 the location of this corner and that he used it to position to the 1/16 corner on the north line of the NE¼ of this section.
- January 1922** John Norgaard, County Surveyor, records in County Surveyors Record Book A, page 458 "S¼ post section 4" at this corner and that he used this corner as part of his survey.
- 1924** John Norgaard, County Surveyor, records in County Surveyors Record Book A, page 454 "South line sec 4, 1300 ft south of S-line of cemetery fence".
- 1931** John Norgaard, County Surveyor, records in County Surveyors Record Book A, page 237 "south ¼ post" at this corner and dimensions to this position.
- September 11, 1973** Jesse E. Fant, LS 3230, prepared a Certificate of Location of Government Corner and notes "Nothing found" and placed a "Minnesota Highway Department cast iron monument 18" below ground" at this corner position. In his statement of evidence he notes "a Minnesota Highway Department survey crew excavated for this corner. The excavation was started at a point 49 feet north of the fence corner (22.5 feet north of the centerline of the township road). The excavation extended 3 feet east, 9 feet west, 4 feet south and 4 feet north of that point to a depth of 3.5 feet. No evidence of the corner was found in the excavation. The corner was set by a derivative method proportioning Norgaard's 1909 survey, online with an east-west fence line to the east which continues to the northeast section corner, and 22.5 feet north of the centerline of the east-west township road. This position is 61.4 feet east and 19.9 feet north of the lost location." He also recorded 3 section corner witness ties.

STATEMENT OF EVIDENCE

North Quarter Corner of Section 9, T115N-R39W

(Page 2 of 3)

- 1974** Minnesota Department of Transportation Highway Right of Way Map No. 180-3C, Sheet 1 notes a "Cast Iron Mon." at this corner and dimensions to this corner position.
- 1974** Minnesota Department of Transportation Highway Right of Way Map No. 180-4A, Sheet 3 notes "Cast Iron Mon." at this corner and dimensions to this corner position.
- April 1974** Robert C. Jones, LS 11864, with the Minnesota Department of Transportation prepared section breakdown sheets for Sections 4 and 9 as part of State Project 8701-18 for Trunk Highway No. 23, and notes "Cast Iron Mon" at this corner position. He also lists the project coordinates of this corner and the azimuth and distances between the adjacent section corners.
- 1975** Robert C. Jones, LS 11864, with the Minnesota Department of Transportation prepared a survey report for State Project 8701-18 for Trunk Highway No. 23. In this report he notes a "Cast Iron Monument" at this corner, along with the project coordinates, witness ties and dimensions to this corner position.
- November 15, 1976** John E. Swenson, LS 10460 prepared the record plats entitled State Highway Right of Way Plat No. 87-14 and State Highway Right of Way Plat No. 87-15 and notes a "M.H.D. Cast Iron" at this corner and dimensions to this corner position.
- October 25, 1991** Bruce W. Shepperd, LS 17003, while performing a survey in Section 4, notes a "Cast iron monument found" at this corner and dimensions to this corner position.
- March 1, 1991** Lyle E Moseng, LS 11943, while performing surveys in Sections 4 and 9, notes a "Monument found" at this corner and dimensions to this corner position. In his field book he notes a "Spike at or near N¼ corner sec 9 (original destroyed) at this corner.
- June 15, 1992** Lyle E. Moseng, LS 11943, while performing a survey in Section 9, notes a "Monument found" at this corner position.
- October 31, 1994** Lyle E. Moseng, LS 11943, while performing a survey in section 9, notes a "MN DOT Cast Iron Monument" at this corner and dimensions to this corner position.
- Unknown Date** Westwood Professional Services provided a CAD file of field work in sections 3 and 4 and notes "FIP CIM" at this corner position.

STATEMENT OF EVIDENCE

North Quarter Corner of Section 9, T115N-R39W

(Page 3 of 3)

July 15, 2025

Matthew D. Runke, LS 46171, found a Cast Iron Monument at this corner location. The Cast Iron Monument was placed by Jesse Fant in 1973 after he had excavated an area 12' east – west by 8' north - south and centered 22.5' north of the centerline of the township road and did not find any evidence of this corner. A straight line between the NE and NW corners of this section lands on the center line of the township road so it was decided to excavate for this corner in the road. With the aid of a backhoe a 3.2' deep hole was dug that covered an area extending 4' North, 3' South, 14' East, and 5' West of a location on a straight line between the NE and NW corners of this section and at the County Surveyors Record Book A, page 237 prorated distance to this corner. At a depth of 2.7' a 9" x 9" x 7" Stone was found lying flat. No additional evidence indicating the exact location of this section corner was recovered. It appears this area has been disturbed by prior road construction as we were unable to find the original topsoil layer and we encountered mixed soils the entire depth of the hole. Runke also looked for a stone at the north 1/16 corner of the northeast quarter of this section as noted by Norgaard but was unable to recover this monument. The position of this corner was verified by using former County Surveyor records, surveys, and Minnesota Department of Transportation records, including 2 of the 3 section corner witness ties recorded by Fant in 1973. The Cast Iron Monument appears to be the best available evidence of the location of the Original Government Land Office Survey corner and was left as found.