

Doc# 284735 Fee: \$0.00 3 Pages

Property & Public Services
Property Records Division
Yellow Medicine County, Minnesota
I hereby certify that the within instrument
was filed on August 12, 2025 at 1:00 PM

Janel Timm, Yellow Medicine County Recorder

Alvin L. Fischer

CERTIFICATE OF LOCATION OF GOVERNMENT CORNER

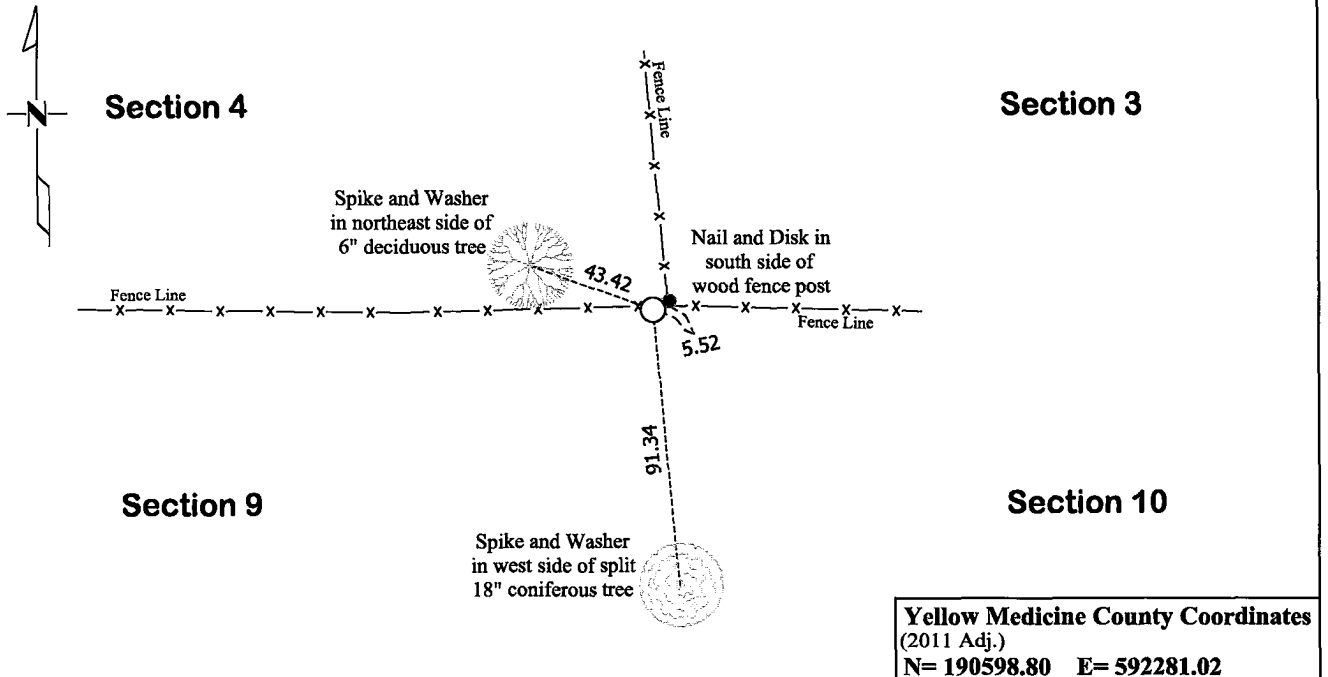
Northeast Corner of Section **9**, Township **115**, Range **39**
Fifth Principal Meridian, State of Minnesota, County of **Yellow Medicine**

At the corner location shown on the sketch:

☒ On March 28, 2025 found a 6" x 6" Granite Stone marked with an X
DATE

☒ left monument as found ☐ lowered monument ☐ removed monument (explain)

☐ On _____ placed a _____
DATE



Statement of evidence for this corner location is on back of this page.

I hereby certify that this survey, plan, or report was prepared by me or under my direct supervision and that I am a duly Licensed Land Surveyor under the laws of the state of Minnesota.

Signature Matthew D. Runke Date 8/11/25
Matthew D. Runke, Minnesota Registered Land Surveyor #46171

STATEMENT OF EVIDENCE
Northeast Corner of Section 9, T115N-R39W

(Page 1 of 2)

- 1864** Chas E. Davis & J. W. Webb Jr. were contracted by the United States Government Land Office to perform the Original Public Land Survey in this township. Davis & Webb record in their field notes "Set post in mound with pits for corner."
- March 28, 1896** County Surveyors Record Book A, page 100 notes "Sec corner found" at this corner and dimensions to this corner position.
- 1899-1901** John Norgaard, County Surveyor, records in the index of County Surveyors Record Book B that he "re-surveyed all the section corners except the township corners in the county" and "the monuments are all jasper granite 2 feet long and 6in x 6in." On page 75 he notes "Found stake and stone in the government mound. Set top of monument 5in below ground."
- August 1909** John Norgaard, County Surveyor, records in County Surveyors Record Book A, page 201 the location of this corner and dimensions to this corner position but does not mention what type of monument was found.
- August 26, 1910** John Norgaard, County Surveyor, records in County Surveyors Record Book A, page 222 the location of this corner and dimensions to this corner position but does not mention what type of monument was found.
- 1915** The Great Northern Railway Company Railroad Right of Way Map No. 959D, Sheet No. 11 notes this corner position and lists the station of the section line crossing and the distance from this corner to the center line crossing but does not mention what type of monument was found.
- June 1918** John Norgaard, County Surveyor, records in County Surveyors Record Book A, page 406 the location of this corner and dimensions to this corner but does not mention what type of monument was found.
- 1918** John Norgaard, County Surveyor, records in County Surveyors Record Book A, page 407 the location of this corner and dimensions to this corner position but does not mention what type of monument was found.
- 1924** County Surveyors Record Book A, page 454 notes "South line sec 4 1300ft south of s-line of cemetery fence."
- March 1931** John Norgaard, County Surveyor, records in County Surveyors Record Book A, page 237 "Found Stone Monument Set at the re-survey of the County" and dimensions to this corner position.
- October 12, 1971** Jesse E. Fant, LS 3230, prepared a Certificate of Location of Government Corner and notes he found a "6in x 6in x 24in granite monument – 4in above ground" at this corner position.
- 1974** Minnesota Department of Transportation Highway Right of Way Map No. 180-3C, Sheet 1 notes "Granite Mon." at this corner and dimensions to this corner position.
- 1974** Minnesota Department of Transportation Highway Right of Way Map 180-4A, Sheet No.3 notes "Granite mon." at this corner and dimensions to this corner position.

STATEMENT OF EVIDENCE
Northeast Corner of Section 9, T115N-R69W

(Page 2 of 2)

- April 1974** Robert C. Jones, LS 11864, with the Minnesota Department of Transportation prepared section breakdown sheets for Sections 3,4,9 and 10 as part of State Project 8701-18 for Trunk Highway No. 23, and notes "Stone mon." at this corner position. He also lists the project coordinates of this corner and the azimuth and distances between the adjacent section corners.
- 1975** Robert C. Jones, LS 11864, with the Minnesota Department of Transportation prepared a survey report for State Project 8701-18 for Trunk Highway No. 23. In this report he notes a "Granite Monument" at this corner, along with the project coordinates, witness ties and dimensions to this corner position.
- November 15, 1976** John E. Swenson, LS 10460, prepared the record plats entitled State Highway Right of Way Plat No. 87-14 and State Highway Right of Way Plat No. 87-15, and notes a "6in x 6in Granite Monument" at this corner and dimensions to this corner position.
- March 1, 1991** Lyle E. Moseng, LS 11943, while performing a survey in Sections 4 and 9, notes "Monument found" at this corner and dimensions to this corner position. In his field book he notes "Sq Cut Granite Stone" at this corner.
- June 15, 1992** Lyle E. Moseng, LS 11943, while performing a survey in Section 9, notes "Monuments found" at this corner and dimensions to this corner position.
- October 31, 1994** Lyle E. Moseng, LS 11943, while performing a survey in Section 9, notes "Square Granite Stone" at this corner position.
- Unknown Date** Westwood Survey Professional Services provided a CAD file of field work in Sections 3 and 4 and notes "Stone/X on Stone" at this corner position.
- March 28, 2025** Matthew D. Runke, LS 46171, found a 6" x 6" square cut red granite (Jasper) stone with an X on top at this corner position. This Jasper stone was placed by Norgaard between 1899-1901 at the location of a found stake and stone in the government mound. The position of this corner was verified by using former County Surveyor records, surveys, plats, and Minnesota Department of Transportation records. The 6" x 6" Jasper stone is the best available evidence of the location of the Original Government Land Office Survey corner and was left as found.