

Doc# 284736 Fee: \$0.00 3 Pages

Property & Public Services  
Property Records Division

Yellow Medicine County, Minnesota

I hereby certify that the within instrument  
was filed on August 12, 2025 at 1:00 PM

Janel Timm, Yellow Medicine County Recorder

Alvin L. Fischer

## CERTIFICATE OF LOCATION OF GOVERNMENT CORNER

**East Quarter**

Corner of Section **9**, Township **115**, Range **39**

**Fifth** Principal Meridian, State of Minnesota, County of **Yellow Medicine**

At the corner location shown on the sketch:

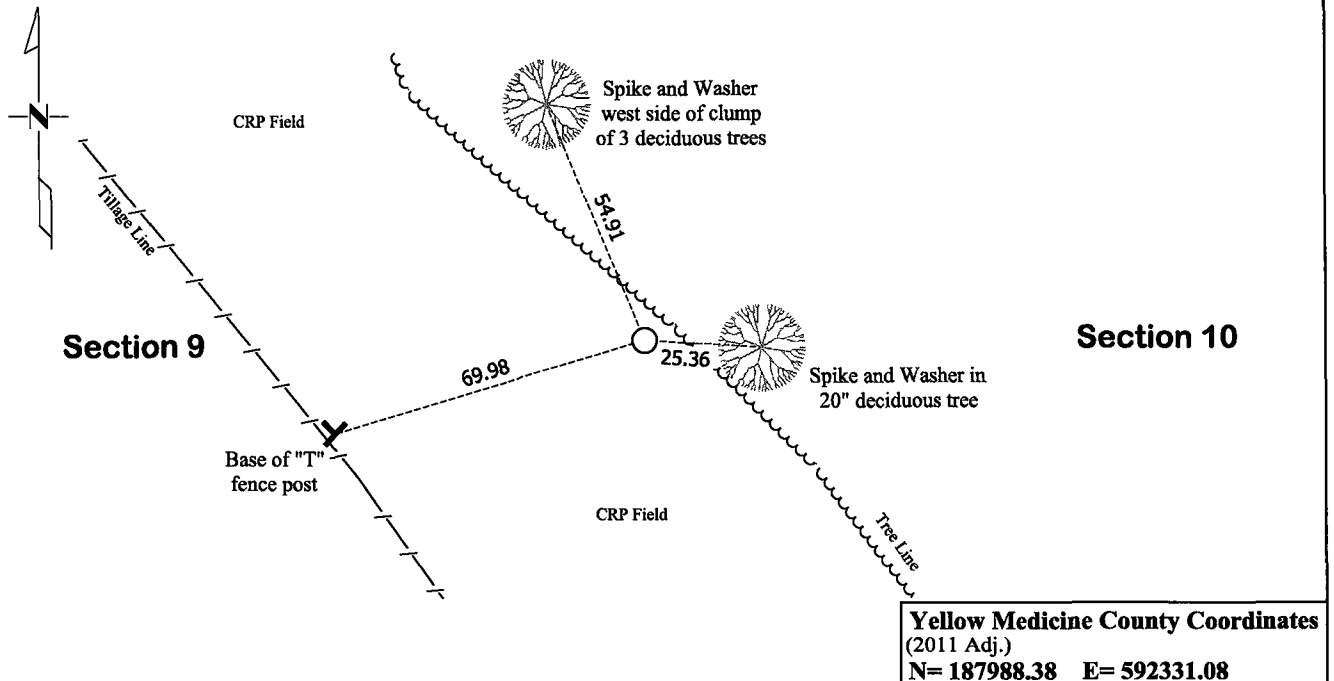
☒ On July 3, 2025 found a Cast Iron Monument  
DATE

☒ left monument as found

☐ lowered monument

☐ removed monument (explain)

☐ On \_\_\_\_\_ placed a \_\_\_\_\_  
DATE



Statement of evidence for this corner location is on back of this page.

I hereby certify that this survey, plan, or report was prepared by me or under my direct supervision and that I am a duly Licensed Land Surveyor under the laws of the state of Minnesota.

Signature Matthew D. Runke Date 8/11/25  
Matthew D. Runke, Minnesota Registered Land Surveyor #46171

**STATEMENT OF EVIDENCE**  
**East Quarter Corner of Section 9, T115N-R39W**

---

(Page 1 of 2)

- 1864** Chas E. Davis & J. W. Webb Jr. were contracted by the United States Government Land Office to perform the Original Public Land Survey in this township. Davis & Webb record in their field notes "Set post in mound with pits for quarter section corner."
- June 1, 1874** Ole Quam, County Surveyor, records in County Surveyors Record Book A, page 8 "1/4 Post" at this corner position.
- March 28, 1896** Jonah Peterman, County Surveyor, records in County Surveyors Record Book A, page 100 the location of this corner and dimensions to this corner position but does not mention what type of monument was found.
- 1899-1901** John Norgaard, County Surveyor, records in the index of County Surveyors Record Book B that he "re-surveyed all the section corners except the township corners in the county" and "the monuments are all jasper granite 2 feet long and 6in x 6in." On page 11 he notes dimensions to this corner position.
- 1915** The Great Northern Railway Company Railroad Right of Way Map No. 959D, Sheet No. 11 notes this corner position and lists the station of the section line crossing and the distance from this corner to the center line crossing but does not mention what type of monument was found.
- June 1918** John Norgaard, County Surveyor, records in County Surveyors Record Book A, page 407 the location of this corner and dimensions to this corner position but does not mention what type of monument was found.
- 1974** Minnesota Department of Transportation Highway Right of Way Map No.180-4A, Sheet No. 2 notes "Cast iron mon." at this corner and dimensions to this corner position.
- April 10, 1974** Robert C. Jones, LS 11864 with the Minnesota Department of Transportation prepared section breakdown sheets for sections 9 and 10 as part of State Project 8701-18 for Trunk Highway No. 23 and notes "Cast iron mon." at this corner position. He also lists the project coordinates of this corner and the azimuth and distances between the adjacent section corners.
- May 2, 1974** Jesse E. Fant, LS 3230, prepared a Certificate of Location of Government Corner and notes "nothing found" and placed a "Minnesota Highway Department cast iron monument" at this corner position. In his statement of evidence, he notes "The corner falls in a cultivated field; there are no occupation lines north, south, east or west to indicate where the corner may have been. The landowner said he has never seen any type of marker at the corner. No attempt was made to excavate for this corner because there is no indication on the ground as to its position. The corner was set by derivative method. Jonah Peterman's survey was proportioned, and the corner was set on a line extending from the southeast corner of the section through the Burlington-Northern Railroad engineer's station 1928+75. This position is 5.3 feet east and 41.1 feet north of the lost location." He also recorded 3 section corner witness ties.
- 1975** Robert C. Jones, LS 11864, with the Minnesota Department of Transportation prepared a survey report for State Project 8701-18 for Trunk Highway No. 23. In this report he notes a "Cast Iron Monument" at this corner, along with the project coordinates, witness ties and dimensions to this corner position.

**STATEMENT OF EVIDENCE**  
**East Quarter Corner of Section 9, T115N-R39W**

---

(Page 2 of 2)

- November 15, 1976** John E. Swenson, LS 10460, prepared the record plat entitled STATE HIGHWAY RIGHT OF WAY PLAT No. 87-14, and notes a "M.H.D Cast Iron" at this corner and dimensions to this corner position.
- March 1, 1991** Lyle E. Moseng, LS 11943, while performing a survey in Section 9, notes "Monument found" at this corner and dimensions to this corner position.
- July 3, 2025** Matthew D. Runke, LS 46171, found a Cast Iron Monument at this corner location. In 1974 Jesse Fant noted this area was a cultivated field and that he could not find any evidence of this corner position. Fant noted the 1896 Peterman survey was proportioned and he set a Cast Iron Monument on a line extending from the southeast corner of the section through the Burlington-Northern Railroad engineer's station 1928+75. The Norgaard survey records indicate the corner might have been 40± feet south of the cast iron. An area extending 5' north, 3' south, 2' east and 7' west of a point on the section line and 40' south of the cast iron was probed and no additional evidence indicating the exact location of this section corner was recovered. The prior cultivation of this field appears to have destroyed any evidence of the Original Government Land Office Survey corner. Runke also looked for a monument at the north 1/16 corner of the southwest quarter of section 10 as noted by Peterman in 1896 but was unable to recover this monument. The position of this corner was verified by using former County Surveyor records, surveys, plats, and Minnesota Department of Transportation records. The Cast Iron Monument appears to be the best available evidence of the location of the Original Government Land Office Survey corner and was left as found.