

Doc# 284738 Fee: \$0.00 4 Pages

Property & Public Services

Property Records Division

Yellow Medicine County, Minnesota

I hereby certify that the within instrument
was filed on August 12, 2025 at 1:00 PM

Janel Timm, Yellow Medicine County Recorder

Aligail L. Fischer

CERTIFICATE OF LOCATION OF GOVERNMENT CORNER

Northeast

Corner of Section **10**, Township **115**, Range **39**

Fifth Principal Meridian, State of Minnesota, County of **Yellow Medicine**

At the corner location shown on the sketch:

☒ On March 28, 2025 found a 1" x 8" Iron Bolt at base of Steel Fence Post
DATE

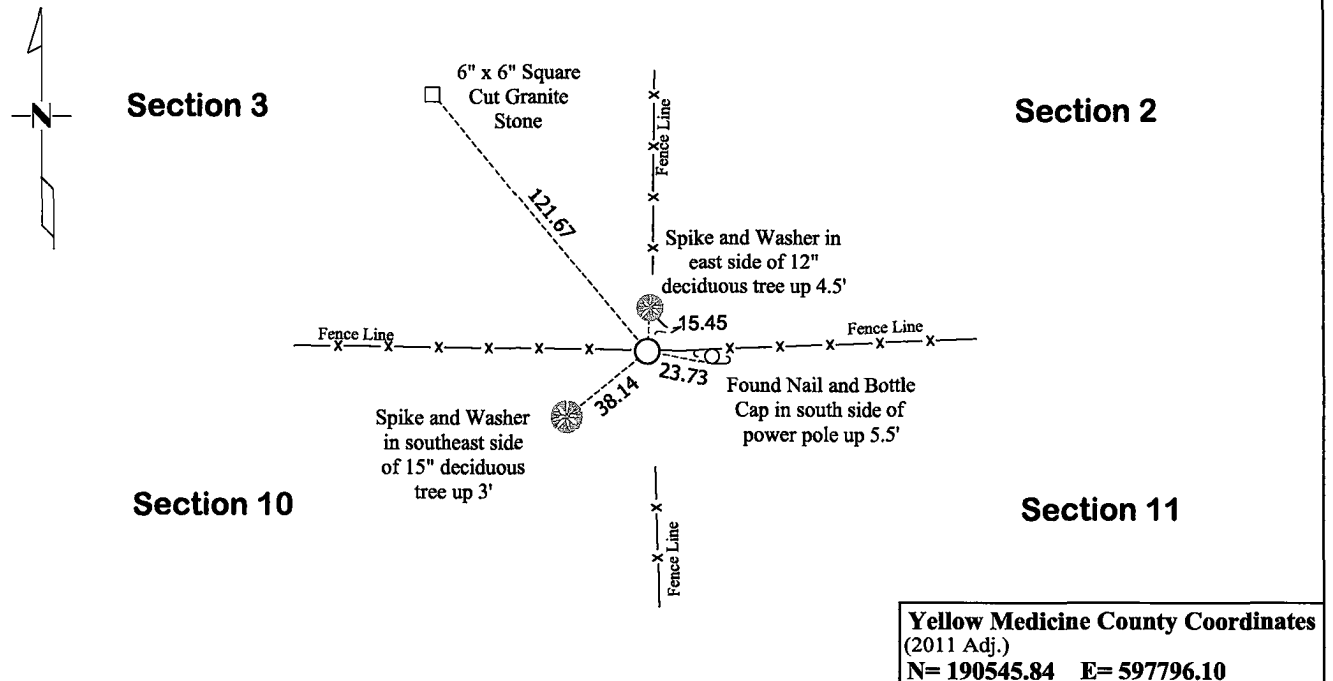
☐ left monument as found

☐ lowered monument

☒ removed monument (explain)

☒ On July 25, 2025 placed a 5/8" x 24" Iron Rod with a "MN/DOT DISTRICT SURVEYS" stamped
DATE

Aluminum Cap at the location of the Iron Bolt



Statement of evidence for this corner location is on back of this page.

I hereby certify that this survey, plan, or report was prepared by me or under my direct supervision and that I am a duly Licensed Land Surveyor under the laws of the state of Minnesota.

Signature

Matthew D. Runke

Date

8/11/25

Matthew D. Runke, Minnesota Registered Land Surveyor #46171

STATEMENT OF EVIDENCE
Northeast Corner of Section 10, T115N-R39W
(Page 1 of 3)

- 1864** Chas E. Davis & J. W. Webb Jr. were contracted by the United States Government Land Office to perform the Original Public Land Survey in this township. Davis & Webb record in their field notes "Set post in monument of rocks with mounds of rocks in lieu of pits for corner."
- December 1883** Jonah Peterman, County Surveyor, records in County Surveyors Record Book A, page 100 "Government in a stone pile with a stone pile and large stone on the north side close by" and dimensions to this corner position.
- December 1890** Jonah Peterman, County Surveyor, records in County Surveyors Record Book A, page 102 "a large stone with a drilled hole in where the old corner post was standing by the southeast corner of side stone" and dimensions to this corner position.
- August 10, 1892** Jonah Peterman, County Surveyor, records in County Surveyors Record Book A, page 61 "Gov corner found stake had been pulled up out of the stone pile replaced a large stone on the north side" and "found pile of stone within a pile of stone, the stake was taken by some unknown person." He also dimensions to this corner position.
- 1899-1901** John Norgaard, County Surveyor, records in the index of County Surveyors Record Book B that he "re-surveyed all the section corners except the township corners in the county" and "the monuments are all jasper granite 2 feet long and 6in x 6in." On page 75 he notes "Found mound as noted by me 7 years ago in the subdivision of section 2. Former county surveyor Peterman have used the same corner. R. Christoferson about 16 years ago found a old stake in a mound of stones at the same place. Set top of monument 3in above ground."
- 1903** According to the 1971 Certificate of Location of Government Corner filed by Jesse Fant, "Yellow Medicine County Clerk of court file number 2828 Minnesota District Court, Charles P. Griswold and Jane B. Griswold vs. H. W. Austin et.al., established the true location of the section corner at the intersection of fences.
- A Quote from a portion of the file:
That northeast corner of said Section 10 as determined by the United States Government Survey is located at a point situated in a mound of rocks about 8 feet in height, which mound is now covered with growing brush and situated in a southeasterly direction from said stone monument established by said Norgaard a distance of 7 rods 9 feet 4 inches. (124.83 ft.)
The file goes on to say that this is the true location of the section corner as determined by the original United States Government Survey."
- May 16, 1910** John Norgaard, County Surveyor, records in County Surveyors Record Book A, page 212 the location of this corner and dimensions to this corner position but does not mention what type of monument was found.
- June 1912** John Norgaard, County Surveyor, records in County Surveyors Record Book A, page 271 the location of the corner and dimensions to this corner position but does not mention what type of monument was found.
- June 1917** John Norgaard, County Surveyor, records in County Surveyors Record Book A, page 385 the location of this corner and dimensions to this corner position but does not mention what type of monument was found.

STATEMENT OF EVIDENCE
Northeast Corner of Section 10, T115N-R39W

(Page 2 of 3)

1924	County Surveyors Record Book A, page 454 notes "Judicial cor. at the intersection of fence on 4 rods 11ft 4in East and 5 rods 11ft 4in South of jasper stone."
1924	John Norgaard, County Surveyor, records in County Surveyors Record Book A, page 473 "Judicial cor S.W cor, 77.4ft East and 94ft south of jasper stone monument" and dimensions to this corner position.
1926±	Minnesota Department of Transportation Highway Right of Way, No. Map 4-71B, Sheet 1 lists the stationing of the Section line crossing and the distance from this corner position to the center line crossing but does not mention what type of monument was found.
October 12, 1971	Jesse E. Fant, LS 3230, prepared a Certificate of Location of Government Corner and notes he found "The intersection of fences, North, South, East and West at this corner position. He also recorded 1 section corner witness ties.
1974	Minnesota Department of Transportation Highway Right of Way Map, No. 180-3C, Sheet 1 notes "Sec. Cor. is the intersection of fences N, S, E and W" and dimensions to this corner position.
April 1974	Robert C. Jones, LS 11864, with the Minnesota Department of Transportation prepared section breakdown sheets for Sections 3 and 10 as part of State Project 8701-18 for Trunk Highway No. 23, and notes "Fence corner is the Sec. Corner" at this corner position. He also lists the project coordinates of this corner and the azimuth and distances between the adjacent section corners.
1975	Robert C. Jones, LS 11864, with the Minnesota Department of Transportation prepared a survey report for State Project 8701-18 for Trunk Highway No. 23. In this report he notes a "At fence corner wood post" at this corner and lists the project coordinates of this corner position.
Unknown Date	Yellow Medicine County Highway Engineer Section Corner Ties note 2 Section Corner witness ties but does not mention what type of monument was found.
April 15, 2010	Duane A. Bonnema, LS 14895, while performing a survey in Section 2, notes a "Found iron monument from former survey" at this corner and dimensions to this corner position.
June 20, 2011	Roy Marihart, LS 19092, while performing a survey in Section 3, notes a "Found corner monument" at this corner and dimensions to this corner position.
December 23, 2015	Matthew Runke, LS 46171, while performing a survey in Section 3, notes a "Wood Fence Post per Section Corner Cert – Doc.163240" at this corner and dimensions to this corner position.
Unknown Date	Roy Marihart, LS 19092, while performing a survey in Section 2, notes "Found corner monument" at this corner and dimensions to this corner position.
Unknown Date	Westwood Professional Services provided a CAD file of field work in sections 3 and 4 and notes "FIR Solid/T Post of Intersecting Fences N-S-E-W Fits Ties" at this corner position.

STATEMENT OF EVIDENCE
Northeast Corner of Section 10, T115N-R39W

(Page 3 of 3)

March 28, 2025 Matthew D. Runke, LS 46171, found a 1" x 8" iron bolt at this corner location. The iron bolt was found next to a steel fence post at the intersection of fences running north, south, east and west. The bolt was found in a hole in the rock, which may be the hole from the old wood corner post. Runke also found the 6" x 6" square cut red granite (Jasper) stone set by Norgaard NW of this corner position. In 1903 the district court determined the true location of the section corner was at the intersection of fences. The position of this corner was verified by using former County Surveyor records, surveys, County Engineer records and Minnesota Department of Transportation records, including the 1 tie shown by Fant in 1971 and 1 of the 2 ties shown by the County Highway Engineer. The 1" x 8" iron bolt at the intersection of fences appears to be the best available evidence of the location of the Original Government Land Office Survey corner. A 5/8" x 24" Iron Rod with a "MN/DOT DISTRICT SURVEYS" stamped aluminum cap was set at the location of the 1" x 8" iron bolt.