

Doc# 284739 Fee: \$0.00 2 Pages

Property & Public Services
Property Records Division
Yellow Medicine County, Minnesota
I hereby certify that the within instrument
was filed on August 12, 2025 at 1:00 PM

Janel Timm, Yellow Medicine County Recorder

Alison L. Fischer

CERTIFICATE OF LOCATION OF GOVERNMENT CORNER

Meander Corner No. 6 of Section **10**, Township **115**, Range **39**

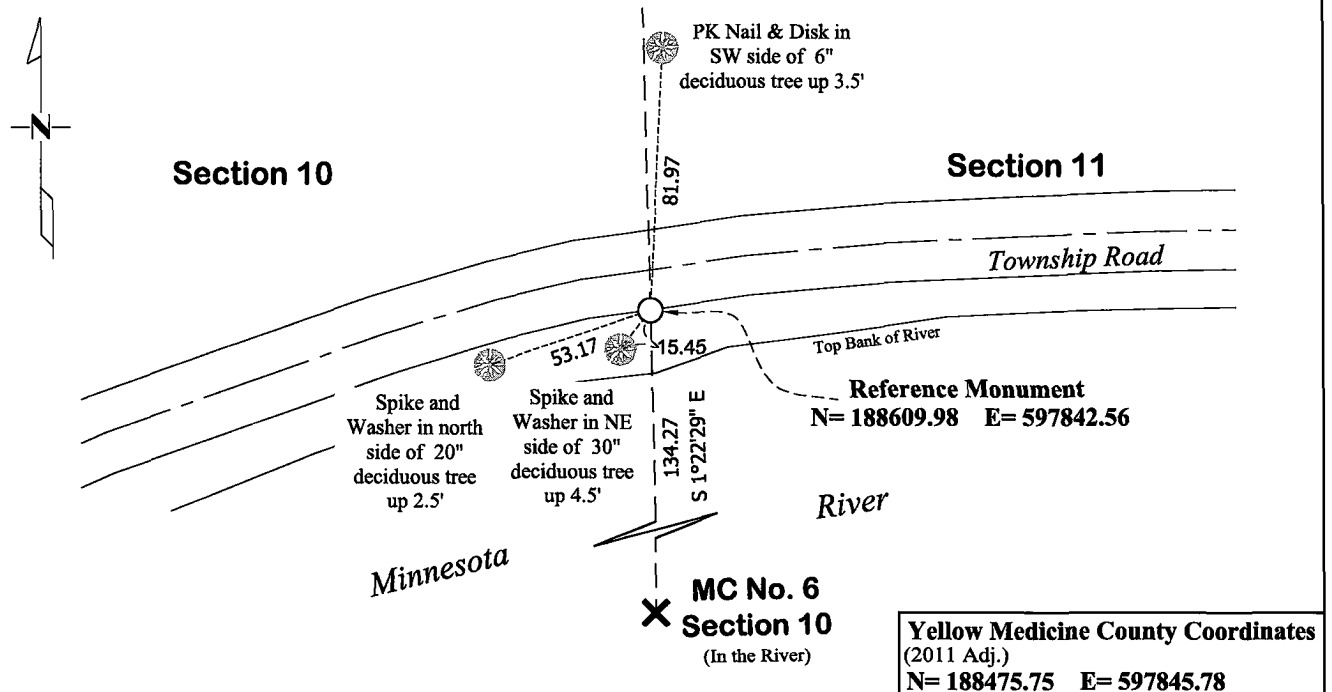
Fifth Principal Meridian, State of Minnesota, County of **Yellow Medicine**

At the corner location shown on the sketch:

☒ On July 25, 2025 found No Existing Monumentation
DATE

☐ left monument as found ☐ lowered monument ☐ removed monument (explain)

☒ On July 25, 2025 placed a Cast Iron Capped 2" x 30" Telspar Monument on-line and 134.27'
DATE
North of the actual corner position.



Statement of evidence for this corner location is on back of this page.

I hereby certify that this survey, plan, or report was prepared by me or under my direct supervision and that I am a duly Licensed Land Surveyor under the laws of the state of Minnesota.

Signature *Matthew D. Runke* Date 8/11/25
Matthew D. Runke, Minnesota Registered Land Surveyor #46171

STATEMENT OF EVIDENCE

Meander Corner Number 6 of Section 10, T115N-R39W

- 1864** Chas E. Davis & J. W. Webb Jr. were contracted by the United States Government Land Office to perform the Original Public Land Survey in this township. Davis & Webb record in their field notes "Intersect N'y bank of Minnesota River bears west I set post in mound with pits".
- March 28, 1896** Jonah Peterman, County Surveyor, records in County Surveyors Record Book A, page 100 the location of this corner and dimensions to this corner position but does not mention what type of monument was found.
- July 25, 2025** Matthew D. Runke, LS 46171, found no existing monumentation at this corner location. The location of this corner lands in the Minnesota River and any evidence of the original government land office survey monument would have been destroyed by erosion caused by the river. Runke located iron monuments along the east line of this section, including a $\frac{3}{4}$ " Iron Rod at the southeast corner of the NE $\frac{1}{4}$ of the NE $\frac{1}{4}$, to determine the direction of this line. This corner was positioned by developing a prorated government distance along the east line of the NE $\frac{1}{4}$ of the NE $\frac{1}{4}$ and using this proration on the government distance of 11.42 chains to this meander corner. A Cast Iron Capped 2" x 30" Telspar Monument was placed as a reference monument, on-line and 134.27 feet north of the corner position.