

Doc# 284740 Fee: \$0.00 3 Pages

Property & Public Services  
Property Records Division

Yellow Medicine County, Minnesota

I hereby certify that the within instrument  
was filed on August 12, 2025 at 1:00 PM

Janel Timm, Yellow Medicine County Recorder

Alvin J. Fischer

## CERTIFICATE OF LOCATION OF GOVERNMENT CORNER

**North Quarter**

Corner of Section

**15**

, Township

**115**

, Range

**39**

**Fifth**

Principal Meridian, State of Minnesota, County of

**Yellow Medicine**

At the corner location shown on the sketch:

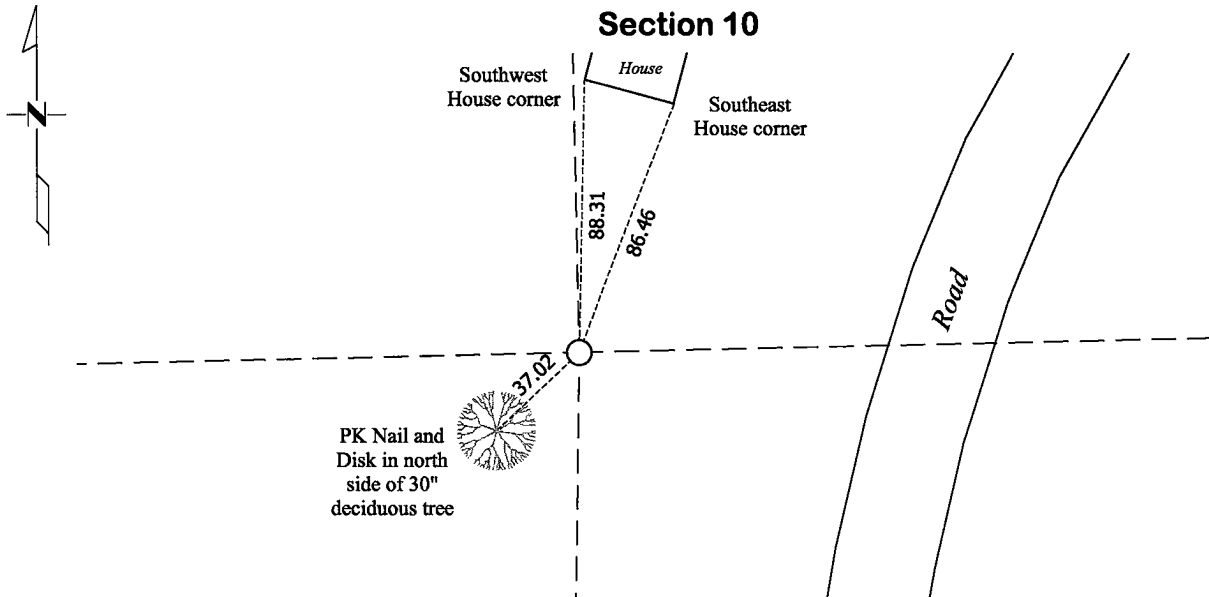
☒ On July 1, 2025 found a Cast Iron Monument with a 6" x 6" Granite Stone below  
DATE

☒ left monument as found

☐ lowered monument

☐ removed monument (explain)

☐ On \_\_\_\_\_ placed a \_\_\_\_\_  
DATE



**Yellow Medicine County Coordinates**  
(2011 Adj.)

**N= 185359.30 E= 595142.32**

Statement of evidence for this corner location is on back of this page.

I hereby certify that this survey, plan, or report was prepared by me or under my direct supervision and that I am a duly Licensed Land Surveyor under the laws of the state of Minnesota.

Signature

Matthew D. Runke

Date

8/11/25

Matthew D. Runke, Minnesota Registered Land Surveyor #46171

***STATEMENT OF EVIDENCE***  
***North Quarter Corner of Section 15, T115N-R39W***

---

(Page 1 of 2)

- 1864** Chas E. Davis & J. W. Webb Jr. were contracted by the United States Government Land Office to perform the Original Public Land Survey in this township. Davis & Webb record in their field notes "Set post for quarter section corner."
- February 11, 1874** O. Quam, County Surveyor, records in County Surveyors Record Book A, page 6 "Starting at the quarter post on the north side of the section".
- June 18, 1895** Jonah Peterman, County Surveyor, records in County Surveyors Record Book A, page 113 "1/4 Post" at this corner and dimensions to this corner position.
- March 28, 1896** Jonah Peterman, County Surveyor, records in County Surveyors Record Book A, page 100 "Quarter post two witness trees" at this corner and dimensions to this corner position.
- April 1912** John Norgaard, County Surveyor, records in County Surveyors Record Book A, page 266 "Found stone set by me several years ago as agrees with the stumps of the G. B. s" and dimensions to this corner position.
- May 1912** John Norgaard, County Surveyor, records in County Surveyors Record Book A, page 269 "Found stone set by me several years ago according to the stumps of the Govt B.T.s"
- June 1914** John Norgaard, County Surveyor, records in County Surveyors Record Book A, page 322 "Stone set where Govt stake used to stand" at this corner and dimensions to this corner position.
- June 1918** John Norgaard, County Surveyor, records in County Surveyors Record Book A, page 407 the location of this corner and dimensions to this corner position but does not mention what type of monument was found.
- 1926±** Minnesota Department of Transportation Highway Right of Way Map No. 4-71B, Sheet 1 notes "Mon Inp." at this corner and lists the distance from this corner to the center line crossing.
- May 1, 1926** John Norgaard, County Surveyor, records in County Surveyors Record Book A, page 415 "N1/4 Post" at this corner position.
- 1933** Minnesota Department of Transportation Field Book No. 2 for State Project 8707, Alignment – Land Ties - Topog for Trunk Highway No. 67, pages 2-4 note the location of this corner and lists the station of the section line crossing but does not mention what type of monument was found.
- 1934** Minnesota Department of Transportation Highway Right of Way Map No. 4-72, Sheet 1, notes "Found stone" at this corner position.
- January 7, 1963** The Minnesota Department of Natural Resources, while performing a survey in Section 15, notes a "Iron marker inplace" at this corner position.
- October 12, 1971** Jesse E. Fant, LS 3230, prepared a Certificate of Location of Government Corner and notes he found a "8in x 8in x 24in stone" and placed a "Minnesota Highway Department cast iron monument over stone" at this corner position. He also recorded 3 section corner witness ties.

# ***STATEMENT OF EVIDENCE***

## ***North Quarter Corner of Section 15, T115N-R39W***

(Page 2 of 2)

- 1974** Minnesota Department of Transportation Highway Right of Way Map No. 180-4A, Sheet 2 notes "Cast Iron Mon." at this corner and dimensions to this corner position.
- April 1974** Robert C. Jones, LS 11864, with the Minnesota Department of Transportation prepared section breakdown sheets for sections 10 and 15 as part of state project 8701-18 for Trunk Highway No. 23, and notes "Cast Iron Mon." at this corner position. He also lists the project coordinates of this corner and the azimuth and distances between the adjacent section corners.
- 1975** Robert C. Jones, LS 11864, with the Minnesota Department of Transportation prepared a survey report for State Project 8701-18 for Trunk Highway No. 23. In this report he notes a "Cast Iron Monument" at this corner, along with the project coordinates, witness ties and dimensions to this corner position.
- 1979-1980** Stephen D. Douglas, Cadastral Surveyor, performed the dependent resurvey of Section 15. Douglas records in his field notes "The ¼ sec. cor. of secs. 10 & 15, perpetuated and recorded by John Norgaard, county surveyor, in 1896, from orig. evidence no longer in existence; monumented with a granite stone, 6x6 ins., firmly set, 12ins. below the surface, with a cast iron post, 3½ ins. diam., firmly set alongside, projecting 1 in. above ground, with cap mkd.
- March 1, 1988** Lowell R. Pommerening Jr., LS 17005, prepared a Certificate of Location of Government Corner and notes he found a "Minnesota Highway Department cast iron monument, flush" and left the monument as found" at this corner position. He also recorded 3 section corner witness ties.
- May 11, 1988** Bert R. Eveland, LS 10516 while performing a survey in Section 15 notes "Cast Iron Monument Found" at this corner and dimensions to this corner position.
- 1991-1994** Robin T. Mathews, Cadastral Surveyor performed the dependent resurvey of Sections 13, 15 and 23. Mathews records in his field notes "The ¼ sec. cor. of secs. 10 and 15, monumented with a granite stone, 6x6 ins., firmly set, 12ins. below the ground, with an iron post, 3½ ins. diam., firmly set alongside, flush with the ground, with iron cap mkd. as described in the 1979 dependent resurvey." He also notes 2 section corner witness ties.
- July 1, 2025** Matthew D. Runke, LS 46171, found a Cast Iron Monument at this corner location. The Cast Iron Monument was removed and a 6" x 6" granite stone was found directly under the cast iron monument. In 1912 John Norgaard notes he found a stone "set by me several years ago as agrees with the stumps of the government bearing trees" and in 1914, he notes stone where government stake used to stand. Norgaard set 6" x 6" Granite stones as part of his remonumentation work in 1899 – 1901 and I believe the 6" x 6" Granite stone we found is the monument he was referring to back in 1912±. The position of this corner was verified by using former County Surveyor records, surveys, BLM records and Minnesota Department of Transportation records, including 3 of the 4 ties shown by Jesse Fant in 1971. The 6" x 6" Granite stone is the best available evidence of the location of the Original Government Land Office Survey corner. The Cast Iron Monument was reset over the 6" x 6" Granite stone.