

Doc# 284741 Fee: \$0.00 2 Pages

Property & Public Services  
Property Records Division  
Yellow Medicine County, Minnesota  
I hereby certify that the within instrument  
was filed on August 12, 2025 at 1:00 PM

Janel Timm, Yellow Medicine County Recorder

Alvin J. Fischer

## CERTIFICATE OF LOCATION OF GOVERNMENT CORNER

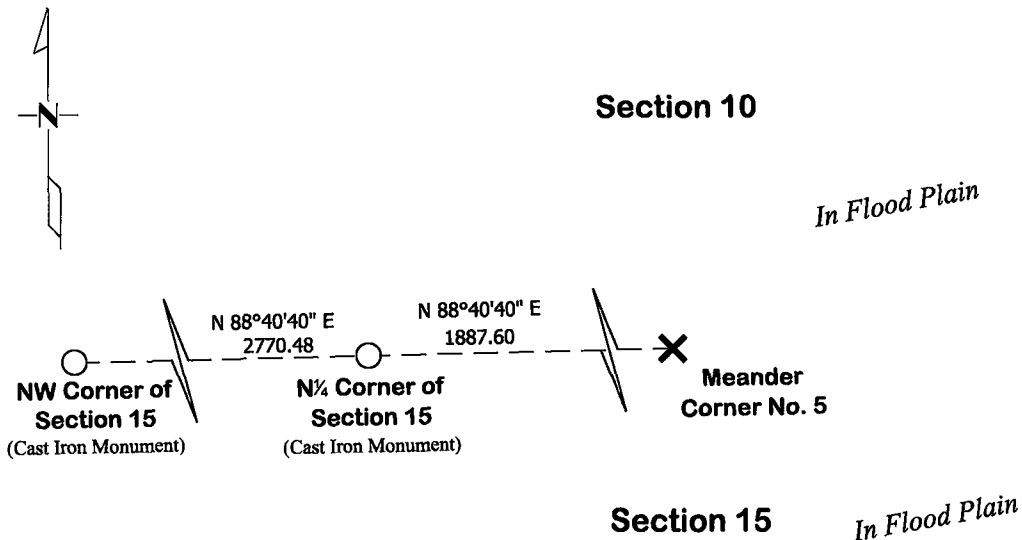
**Meander Corner No. 5** of Section **15**, Township **115**, Range **39**  
**Fifth** Principal Meridian, State of Minnesota, County of **Yellow Medicine**

At the corner location shown on the sketch:

☒ On March 27, 2025 found No Existing Monument  
DATE

☐ left monument as found ☐ lowered monument ☐ removed monument (explain)

☒ On July 25, 2025 placed a County Coordinate Coordinate Value (Unable to set a Monument due to flooding)  
DATE



**Yellow Medicine County Coordinates**  
(2011 Adj.)  
N= 185402.86 E= 597029.42

Statement of evidence for this corner location is on back of this page.

I hereby certify that this survey, plan, or report was prepared by me or under my direct supervision and that I am a duly Licensed Land Surveyor under the laws of the state of Minnesota.

Signature Matthew D. Runke Date 8/11/25  
Matthew D. Runke, Minnesota Registered Land Surveyor #46171

# ***STATEMENT OF EVIDENCE***

---

## ***Meander Corner Number 5 of Section 15, T115N-R39W***

- 1864** Chas E. Davis & J. W. Webb Jr were contracted by the United States Government Land Office to perform the Original Public Land Survey in this township. Davis & Webb record in their field notes "intersect right bank of Minnesota River bears north. I set post for meander corner."
- March 28, 1896** Jonah Peterman, County Surveyor, records in County Surveyors Record Book A, page 100 "Elm said to be corner" at this corner and dimensions to this corner position.
- 1991-1994** Robin T. Mathews, Cadastral Surveyor, performed the dependent resurvey of Sections 13,15 and 23. Mathews records in his field notes "Point for the meander cor. of secs. 10 and 15, at record dist.; there is no remaining evidence of the orig. cor.; not monumented.
- July 25, 2025** Matthew D. Runke, LS 46171, found no existing monumentation at this corner location. The location of this corner lands in the floodplain of the Minnesota River and was underwater at the time of our survey. In 1991 Robin Mathews noted that there was no remaining evidence of the original corner and positioned this corner but did not set a monument. A coordinate value was determined for this corner position based on the records of the Dependent Resurvey of Sections 13,15 and 23. The corner is on the easterly extension of the north line of the NW¼ of Section 15 and at the government distance of 1887.60 feet (28.60 chains) from the N¼ corner of Section 15.