

Doc# 284742 Fee: \$0.00 2 Pages

Property & Public Services
Property Records Division

Yellow Medicine County, Minnesota

I hereby certify that the within instrument
was filed on August 12, 2025 at 1:00 PM

Janel Timm, Yellow Medicine County Recorder

Alipiel L. Fischer

CERTIFICATE OF LOCATION OF GOVERNMENT CORNER

Meander Corner No. 4 of Section **15**, Township **115**, Range **39**

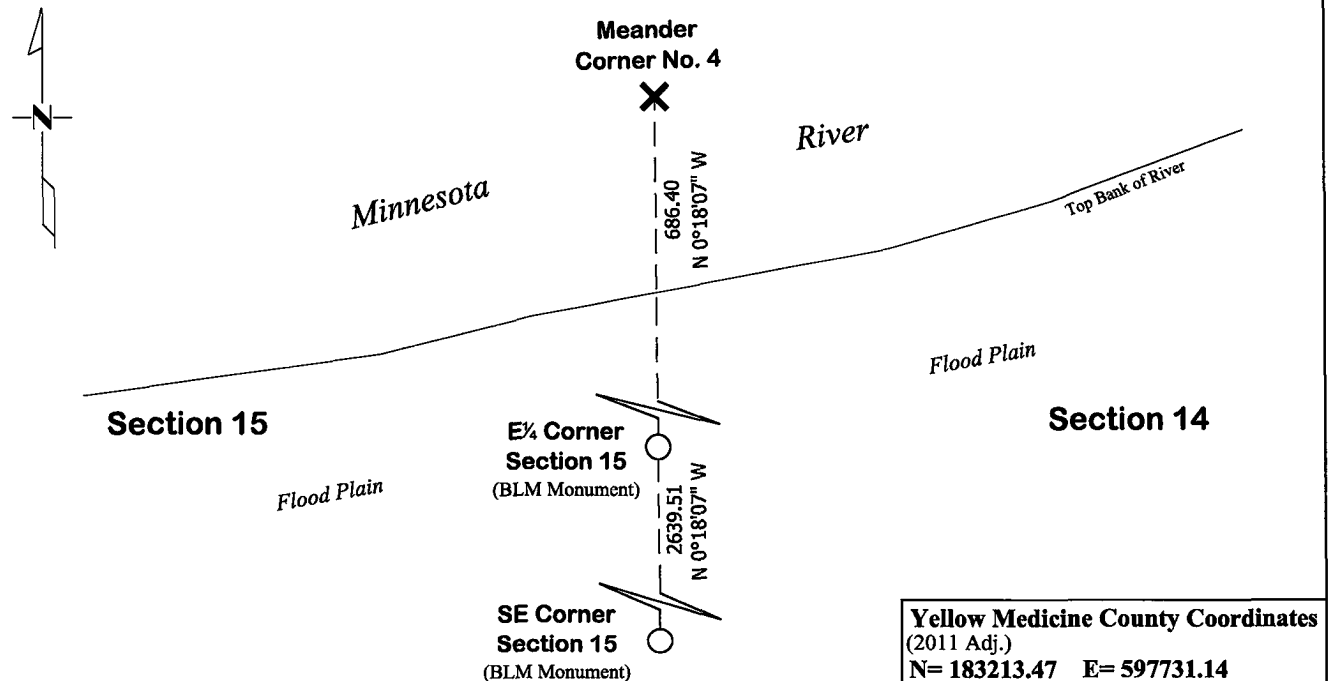
Fifth Principal Meridian, State of Minnesota, County of **Yellow Medicine**

At the corner location shown on the sketch:

☒ On March 27, 2025 found No Existing Monument
DATE

☒ left monument as found ☐ lowered monument ☐ removed monument (explain)

☐ On July 25, 2025 placed a County Coordinate Value (Corner lands in the River)
DATE



Statement of evidence for this corner location is on back of this page.

I hereby certify that this survey, plan, or report was prepared by me or under my direct supervision and that I am a duly Licensed Land Surveyor under the laws of the state of Minnesota.

Signature Matthew D. Runke Date 8/11/25
Matthew D. Runke, Minnesota Registered Land Surveyor #46171

STATEMENT OF EVIDENCE

Meander Corner Number 4 of Section 15, T115N-R39W

- 1864** Chas E. Davis & J. W. Webb Jr. were contracted by the United States Government Land Office to perform the Original Public Land Survey in this township. Davis & Webb record in their field notes "Intersect right bank of Minnesota River and set meander corner."
- June 18, 1895** Jonah Peterman, County Surveyor, records in County Surveyors Record Book A, page 113 the location of this corner and dimensions to this corner position but does not mention what type of monument was found.
- June 1914** John Norgaard, County Surveyor, records in County Surveyors Record Book A, page 322 the location of this corner and dimensions to this corner position but does not mention what type of monument was found.
- 1979-1980** Stephen D. Douglas, Cadastral Surveyor performed the dependent resurvey of Section 15. Douglas records in his field notes "Point for the meander cor. of secs. 14 & 15, at record bearing and dist. falls in the river; there is no remaining evidence of the orig. cor. Not monumented."
- 1991-1994** Robin T. Mathews, Cadastral Surveyor performed the dependent resurvey of Sections 13, 15 and 23. Mathews records in his field notes "Point for the meander cor. of secs. 14 & 15, at record bearing and dist.; there is no remaining evidence of the orig. cor., falls in the Minnesota River, course N. 80° E.; not monumented."
- March 1, 1996** Jack M. Walkky, PE 20394, while performing a survey in Sections 13, 14, 15, 23 and 24 notes this corner and dimensions to this corner position but does not mention what type of monument was found.
- July 15, 1997** Robert C. Jones, LS 11864, with the Minnesota Department of Transportation prepared a section breakdown sheet for Section 14 as part of State Project 8707 for Trunk Highway No. 67, and notes "Temporary Monument" at this corner position. He also lists the project coordinates of this corner and the azimuth and distances between the adjacent section corners.
- July 25, 2025** Matthew D. Runke, LS 46171, found no existing monumentation at this corner location. The location of this corner lands in the Minnesota River and any evidence of the original government land office survey monument would have been destroyed by erosion caused by the river. The area south of this corner location is in the floodplain of the Minnesota River and was underwater at the time of our survey. In 1979 Stephen Douglas noted that there was no remaining evidence of the original corner and positioned this corner but did not set a monument. A coordinate value was determined for this corner position based on the records of the Dependent Resurvey of Section 15 and Dependent Resurvey of Sections 13, 15 and 23. The corner is on the northerly extension of the east line of the SE¼ of Section 15 and at the government distance of 686.40 feet (10.4 chains) from the E¼ corner of Section 15.