

Doc# 284743 Fee: \$0.00 3 Pages

Property & Public Services
Property Records Division
Yellow Medicine County, Minnesota
I hereby certify that the within instrument
was filed on August 12, 2025 at 1:00 PM

Janel Timm, Yellow Medicine County Recorder

Aligail L. Fischer

CERTIFICATE OF LOCATION OF GOVERNMENT CORNER

East Quarter Corner of Section **15**, Township **115**, Range **39**

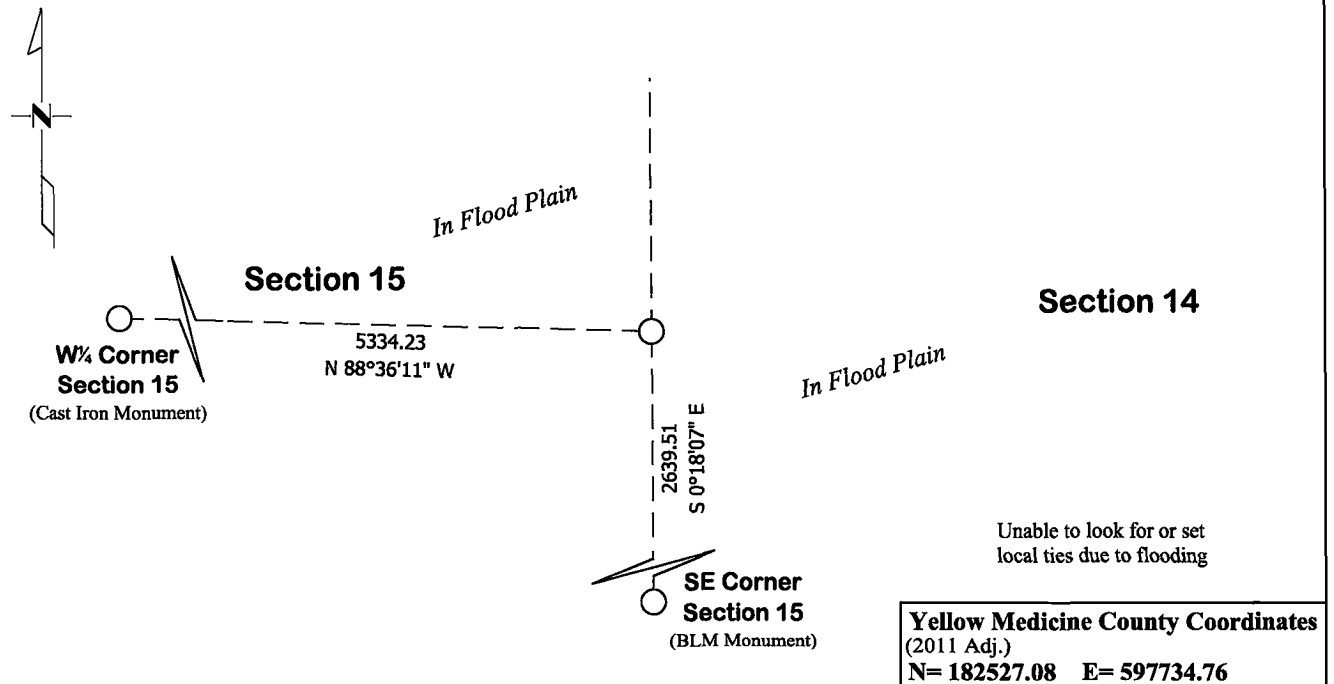
Fifth Principal Meridian, State of Minnesota, County of **Yellow Medicine**

At the corner location shown on the sketch:

☒ On March 27, 2025 found a BLM Aluminum Capped Iron Monument
DATE

☒ left monument as found ☐ lowered monument ☐ removed monument (explain)

☐ On _____ placed a _____
DATE



Statement of evidence for this corner location is on back of this page.

I hereby certify that this survey, plan, or report was prepared by me or under my direct supervision and that I am a duly Licensed Land Surveyor under the laws of the state of Minnesota.

Signature Matthew D. Runke Date 8/11/25
Matthew D. Runke, Minnesota Registered Land Surveyor #46171

STATEMENT OF EVIDENCE
East Quarter Corner of Section 15, T115N-R39W

(Page 1 of 2)

- 1864** Chas E. Davis & J. W. Webb Jr. were contracted by the United States Government Land Office to perform the Original Public Land Survey in this township. Davis & Webb record in their field notes "Set post for ¼ sec corner."
- Nov. 29-30, 1892** Jonah Peterman, County Surveyor, records in County Surveyors Record Book A, page 85 the location of this corner and dimensions to this corner position but does not mention what type of monument was found.
- June 18, 1895** Jonah Peterman, County Surveyor, records in County Surveyors Record Book A, page 113 the location of this corner and dimensions to this corner position but does not mention that type of monument was found.
- July 1913** John Norgaard, County Surveyor, records in County Surveyors Record Book A, page 293 the location of this corner and dimensions to this corner position but does not mention that type of monument was found.
- June 1914** John Norgaard, County Surveyor, records in County Surveyors Record Book A, page 322 the location of this corner and dimensions to this corner position but does not mention that type of monument was found.
- December 1919** John Norgaard, County Surveyor, records in County Surveyors Record Book A, page 419 the location of this corner and dimensions to this corner position but does not mention that type of monument was found.
- 1934** Minnesota Department of Transportation Highway Right of Way Map No. 4-72, Sheet 1 shows this corner position but does not mention what type of monument was found.
- 1979-1980** Stephen D. Douglas, Cadastral Surveyor, performed the dependent resurvey of Section 15. Douglas records in his field notes "Point for the ¼ sec. cor. of secs. 14 & 15, at record bearing and dist.; there is no remaining evidence of the orig. cor. set an aluminum post, 30 ins. Long, 2½ ins. diam., 25 ins. in the ground, with cap mkd."
- 1991-1994** Robin T. Mathews, Cadastral Surveyor, performed the dependent resurvey of Sections 13, 15 and 23. Mathews records in his field notes "The ¼ sec. cor. of secs. 14 & 15, monumented with an aluminum post, 2½ ins. diam., firmly set, projecting 5 ins. above the ground, with aluminum cap mkd. as described in the 1979 dependent resurvey. This cor. is located under 3ft. of the flood waters of the Minnesota River."
- December 3, 1995** Larry L. Zeig, LS 19791, while performing a survey in Sections 14 and 15 notes a "monument found" at this corner and dimensions to this corner position.
- 1996-1997** Richard T. Miller, Cadastral Surveyor, performed the dependent resurvey of Section 14. Miller records in his field notes "The ¼ sec. cor. of secs. 14 and 15, monumented with an aluminum post, 2½ ins. diam., firmly set, projecting 5 ins. above the ground, with cap mkd. as described in the 1979 dependent resurvey"
- March 1, 1996** Jack M. Walkky, PE 20394, while performing a survey in Sections 13, 14, 15, 23 and 25, notes a "PLSS Monument" at this corner and dimensions to this corner position.

STATEMENT OF EVIDENCE

East Quarter Corner of Section 15, T115N-R39W

(Page 2 of 2)

- July 15, 1997** Robert C. Jones, LS 11864, with the Minnesota Department of Transportation prepared a section breakdown sheet for section 14 as part of State Project 8707 for Trunk Highway No. 67 and notes this corner position. He also lists the project coordinates of the section corner and the azimuth and distances between the adjacent section corners but does not mention what type of monument was found.
- January 10, 2001** Larry L. Zeig, LS 19791, while performing a survey in Section 15, notes a “monument found” at this corner and dimensions to this corner position.
- December 19, 2002** Roy A. Marihart, LS 19092, while performing a survey in Section 15, notes a “Found Corner Monument” at this corner and dimensions to this corner position.
- March 4, 2003** Larry L. Zeig, LS 19791, while performing a survey in Section 15, notes a “BLM mon.” at this corner and dimensions to this corner position.
- May 11, 2007** Roy Marihart, LS 19092, while performing a survey in Section 14, shows the location of this corner and dimensions to this corner position, but does not mention what type of monument was found.
- November 17, 2009** Duane A. Bonnema, LS 14895, while performing a survey in Section 14, notes a “brass monument” at this corner and dimensions to this corner position.
- July 27, 2010** Duane A. Bonnema, LS 14895, while performing a survey in Section 14, notes a “Cast iron monument” at this corner and dimensions to this corner position.
- August 23, 2011** Joshua M. Stern, LS 46169, while performing a survey in Section 14, notes a “Cast iron monument” at this corner and dimensions to this corner position.
- 2014** Jesse D. Zeig, LS 44996, prepared the unrecorded plats entitled Upper Sioux Community Right of Way Plat No. 4 Prairies Edge Lane and Upper Sioux Community Right of Way Plat No. 5 560th Street and notes “Iron” at this corner and dimensions to this corner position.
- 2018-2020** Joshua M. Stern, LS 46169, while performing surveys in Section 15, notes a “Brass monument” at this corner and dimensions to this corner position.
- March 27, 2025** Matthew D. Runke, LS 46171, found a BLM Aluminum Capped Monument at this corner location. This monument was placed by Stephen Douglas while performing the Dependent Resurvey of Section 15 and he noted there was no remaining evidence of the original corner at the time of his survey. The location of this corner lands in the floodplain of the Minnesota River and this area became flooded after our original field visit, so we were unable to perform any additional field research in this area or look for and set local ties. The position of this corner was verified by using former County Surveyor records, surveys, BLM records and Minnesota Department of Transportation records. The BLM Aluminum Capped Monument appears to be the best available evidence of the location of the Original Government Land Office Survey corner and was left as found.