

Doc# 284744 Fee: \$0.00 3 Pages
Property & Public Services
Property Records Division
Yellow Medicine County, Minnesota
I hereby certify that the within instrument
was filed on August 12, 2025 at 1:00 PM

Janel Timm, Yellow Medicine County Recorder

Alison J. Fischer

CERTIFICATE OF LOCATION OF GOVERNMENT CORNER

North Quarter Corner of Section **16**, Township **115**, Range **39**

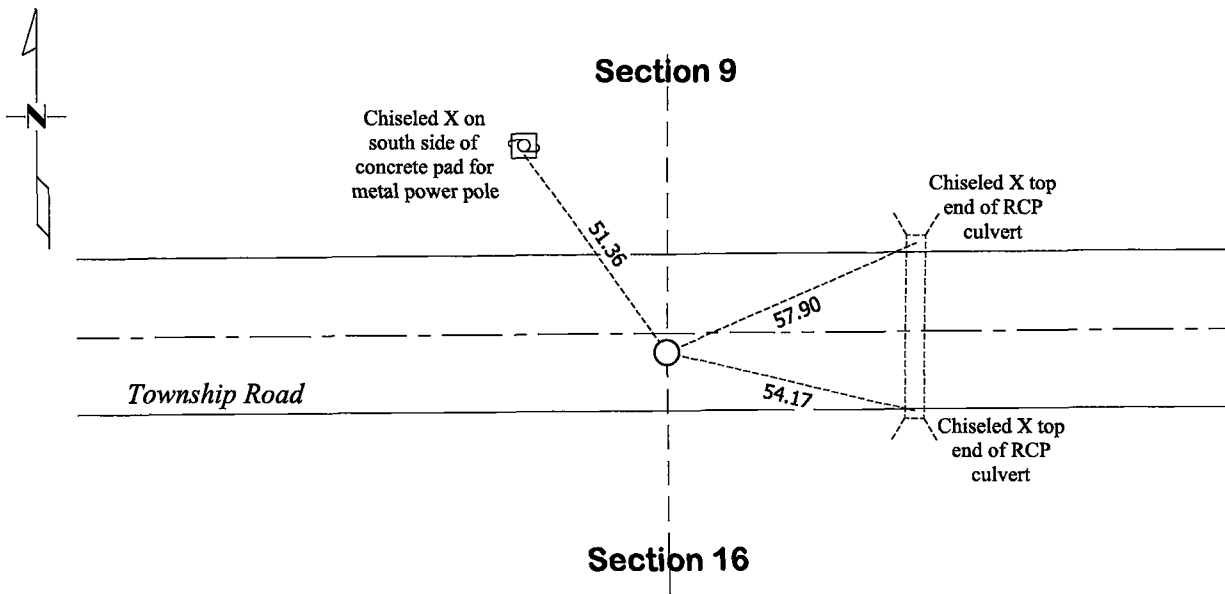
Fifth Principal Meridian, State of Minnesota, County of **Yellow Medicine**

At the corner location shown on the sketch:

☒ On July 2, 2025 found a RLS Capped Iron Rod and a Cast Iron Monument
DATE

☒ left monument as found ☐ lowered monument ☐ removed monument (explain)

☐ On _____ placed a _____
DATE



Yellow Medicine County Coordinates
(2011 Adj.)
N= 185279.72 E= 589729.34

Statement of evidence for this corner location is on back of this page.

I hereby certify that this survey, plan, or report was prepared by me or under my direct supervision and that I am a duly Licensed Land Surveyor under the laws of the state of Minnesota.

Signature Matthew D. Runke Date 8/11/25
Matthew D. Runke, Minnesota Registered Land Surveyor #46171

STATEMENT OF EVIDENCE
North Quarter Corner of Section 16, T115N-R39W

(Page 1 of 2)

- 1864** Chas E. Davis & J. W. Webb Jr. were contracted by the United States Government Land Office to perform the Original Public Land Survey in this township. Davis & Webb record in their field notes "Set post in mound with pits for quarter section corner."
- June 1, 1874** Ole Quam, County Surveyor, records in County Surveyors Record Book A, page 8 "¼ post" at this corner and dimensions to this corner position.
- 1899-1901** John Norgaard, County Surveyor, records in the index of County Surveyors Record Book B that he "re-surveyed all the section corners except the township corners in the county" and "the monuments are all jasper granite 2 feet long and 6in x 6in." On page 11 he notes a dimension to this corner position.
- June 1911** John Norgaard, County Surveyor, records in County Surveyors Record Book A, page 240 the location of this corner and dimensions to this corner position but does not mention what type of monument was found.
- 1915** The Great Northern Railway Company Railroad Right of Way Map No. 959D, Sheet No. 11 notes this corner position and lists the station of the section line crossing and the distance from this corner to the center line crossing but does not mention what type of monument was found.
- June 1918** John Norgaard, County Surveyor, records in County Survey Record Book A, page 407 that he located the 1/16 line fence in the Northeast Quarter of this section and dimensioned from this fence to the NE corner of this section.
- September 11, 1973** Jesse E. Fant, LS 3230, prepared a Certificate of Location of Government Corner and notes "Nothing was found in excavation" and placed a "Minnesota Highway Dept. cast iron monument, 3in below road surface, stamped 'N¼ cor. sec. 16'" at this corner position. In his statement of evidence he notes "a Minnesota Highway Department survey crew excavated for the corner at a point 2640 feet east of the northwest corner of the section and at the centerline of the east-west township road. This distance was determined by comparing Norgaard's distance to a 1973 electronic survey distance from the Northwest corner of the section to a fence line marking the sixteenth line to the east. The extent of the excavation was 5 feet east and west and 4 feet north and 5 feet south of this point to a depth of 4½ feet. Nothing was found in the excavation to indicate the location of the corner. The corner was set by a derivative method using Norgaard's 1911 and 1918 survey dimensions from the northeast corner of the section and on line between the section corners. This positions the corner 2643 feet west of the northeast corner of the section and on line between section corners. The section line passes through the Burlington-Northern Railroad engineer's station 1945+81. The corner is 3 feet south of the centerline of the east-west township road. It is 0.9 feet west of the lost location."
- April 1974** Robert C. Jones, LS 11864, with the Minnesota Department of Transportation prepared section breakdown sheets for sections 9 and 16 as part of State Project 8701-18 for Trunk Highway No. 23, and notes "Cast iron mon." at this corner position. He also lists the project coordinates of this corner and the azimuth and distances between the adjacent section corners.
- 1974** Minnesota Department of Transportation Highway Right of Way Map No.180-4A, Sheets 1 & 2 note "Cast Iron Mon." at this corner and dimensions to this corner position.

STATEMENT OF EVIDENCE

North Quarter Corner of Section 16, T115N-R39W

(Page 2 of 2)

- 1975** Robert C. Jones, LS 11864 with the Minnesota Department of Transportation prepared a survey report for State Project 8701-18 for Trunk Highway No. 23. In this report he notes a "Cast Iron Monument" at this corner along with the project coordinates and dimensions to this corner position.
- November 15, 1976** John E. Swenson, LS 10460, prepared the record plats entitled STATE HIGHWAY RIGHT OF WAY PLAT NO. 87-12, STATE HIGHWAY RIGHT OF WAY PLAT NO. 87-13 and STATE HIGHWAY RIGHT OF WAY PLAT NO. 87-14. On these documents he notes a "M.H.D. Cast Iron" at this corner and dimensions to this corner position.
- March 1, 1991** Lyle E. Moseng, LS 11943, while performing a survey in Section 9, notes "Monument found" at this corner position. In his field book he notes "CIM" at this corner.
- September 14, 2017** The Minnesota Department of Transportation as part of State Project 4203-50 for Trunk Highway 23 noted "Moseng Cap down 5in" at this corner and gathered county coordinates of this corner position.
- July 2, 2025** Matthew D. Runke, LS 46171, found a capped iron monument at this corner location. The capped iron monument was removed, and a cast iron monument was found directly under the capped iron monument. The cast iron monument was placed by Jesse Fant in 1973 after he had excavated an area 10' east – west by 9' north - south and did not find any evidence of this corner. The Norgaard survey records indicate the corner might have been 16± feet north of the cast iron. An area extending 3' north, 3' south, 3' east and 3' west of a point 16' north of the cast iron was probed and no additional evidence indicating the exact location of this section corner was recovered. The position of this corner was verified by using former County Surveyor records, surveys, plats, and Minnesota Department of Transportation records. The Cast Iron Monument appears to be the best available evidence of the location of the Original Government Land Office Survey corner and was left as found.