

Doc# 284745 Fee: \$0.00 4 Pages

Property & Public Services

Property Records Division

Yellow Medicine County, Minnesota

I hereby certify that the within instrument
was filed on August 12, 2025 at 1:00 PM

Janel Timm, Yellow Medicine County Recorder

Alvin L. Fischer

CERTIFICATE OF LOCATION OF GOVERNMENT CORNER

Northeast

Corner of Section **16**, Township **115**, Range **39**

Fifth Principal Meridian, State of Minnesota, County of **Yellow Medicine**

At the corner location shown on the sketch:

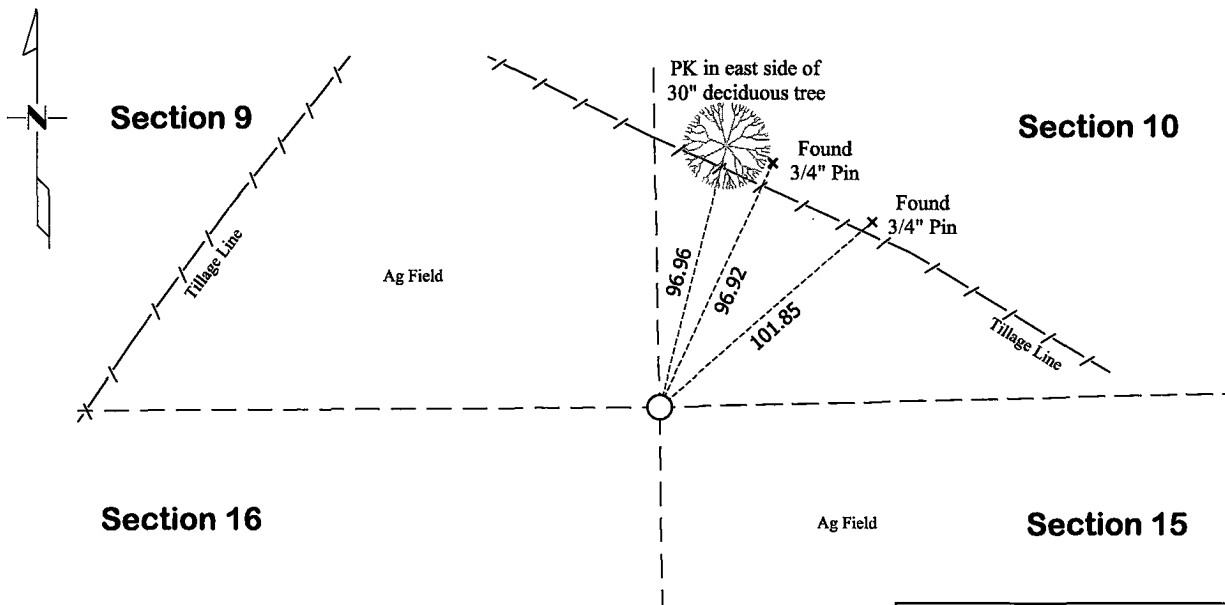
☒ On March 28, 2025 found a Cast Iron Monument
DATE

☒ left monument as found

☐ lowered monument

☐ removed monument (explain)

☐ On _____ placed a _____
DATE



Yellow Medicine County Coordinates
(2011 Adj.)

N= 185295.37 E= 592372.58

Statement of evidence for this corner location is on back of this page.

I hereby certify that this survey, plan, or report was prepared by me or under my direct supervision and that I am a duly Licensed Land Surveyor under the laws of the state of Minnesota.

Signature

Matthew D. Runke

Date

8/11/25

Matthew D. Runke, Minnesota Registered Land Surveyor #46171

STATEMENT OF EVIDENCE
Northeast Corner of Section 16, T115N-R39W

(Page 1 of 3)

- 1864** Chas E. Davis & J. W. Webb Jr. were contracted by the United States Government Land Office to perform the Original Public Land Survey in this township. Davis & Webb record in their field notes "Set post in mound with pits for corner."
- December 1883** Jonah Peterman, County Surveyor, records in County Surveyors Record Book A, page 100 the location of this corner and dimensions to this corner position but does not mention what type of monument was found.
- June 18, 1895** Jonah Peterman, County Surveyor, records in County Surveyors Record Book A, page 113 "Established a stone" at this corner and dimensions to this corner position.
- 1899-1901** John Norgaard, County Surveyor, records in the index of County Surveyors Record Book B that he "re-surveyed all the section corners except the township corners in the county" and "the monuments are all jasper granite 2 feet long and 6in x 6in." On page 11 he notes dimensions to this corner position. On page 76 he notes "Located at equal proportional distance north & south from the southeast corner section 16 and the east ¼ post section 9 and with the government distance 2643 feet east of the south ¼ post section 9. Set top of monument 4in above ground."
- June 1911** John Norgaard, County Surveyor, records in County Surveyors Record Book A, page 240 "NE Corner Lost" at this corner position.
- June 1914** John Norgaard, County Surveyor, records in County Surveyors Record Book A, page 322 the location of this corner and dimensions to this corner position.
- 1915** The Great Northern Railway Company Railroad Right of Way Map No. 959D, Sheet No. 11 notes this corner position and lists the stationing of the section line crossing and the distance from this corner to the center line crossing but does not mention what type of monument was found.
- June 1918** John Norgaard, County Surveyor, records in County Surveyors Record Book A, page 407 "Jasper mark lost several years ago as the corner are in the field located the same as in 1900" and dimensions to this corner position.
- 1974** Minnesota Department of Transportation Highway Right of Way Map No.180-4A Sheets 1 and 2 note "Cast Iron Mon." at this corner and dimensions to this corner position.
- April 1974** Robert C. Jones, LS 11864, with the Minnesota Department of Transportation prepared section breakdown sheets for Sections 9,10,15 and 16 as part of State Project 8701-18 for Trunk Highway No. 23, and notes "Cast Iron Mon." at this corner position. He also lists the project coordinates of this corner and the azimuth and distances between the adjacent section corners.

STATEMENT OF EVIDENCE
Northeast Corner of Section 16, T115N-R39W
(Page 2 of 3)

- May 2, 1974** Jesse E. Fant, LS 3230, prepared a Certificate of Location of Government Corner and notes "Nothing Was Found" and placed a "Minnesota Highway Department cast iron monument stamped 'NE cor 16' down 16in below ground" at this corner position. He also recorded 3 section corner witness ties. Fant also notes he received parole evidence from the landowner and states "Selmer Hildahl has lived in this area for thirty years and owns all the land surrounding the corner. He stated that the granite monument is in the foundation of the granary at his farmstead. The previous landowner had removed the monument from the field many years before because he did not like to plow around it." In his statement of evidence he notes "The corner was set by a derivative method. It is set on a line extending from the northwest corner of the section through the Burlington-Northern Railroad engineer's station 1945+81 and 1321.5 feet east of an occupation line marking the sixteenth line to the west. Norgaard's distance from the northwest corner of the section to the sixteenth line matches the 1973 electronic distance within 0.6 feet. This positions the corner 88.0 feet west and 12.7 feet south of the lost location. The section line is 3.0 feet south of the centerline of the east-west township road at the quarter corner."
- 1975** Robert C. Jones, LS 11864, with the Minnesota Department of Transportation prepared a Survey report for State Project 8701-18 for Trunk Highway 23. In this report he notes a "Cast Iron Monument" at this corner, along with the project coordinates and dimensions to this corner position.
- November 15, 1976** John E. Swenson, LS 10460, prepared the record plats entitled STATE HIGHWAY RIGHT OF WAY PLAT NO. 87-13 and STATE HIGHWAY RIGHT OF WAY PLAT NO. 87-14. On these documents he notes a "M.H.D. Cast Iron Mon." at this corner and dimensions to this corner position.
- 1979-1980** Stephen D. Douglas, Cadastral Surveyor performed the dependent resurvey of Section 15. Douglas records in his field notes "Monumented with a cast iron post, 3 ½ ins. diam., firmly set, 16 ins. below the surface of a field under cultivation, with cap mkd. MINN NE 16 HIGHWAY DEPARTMENT. There is no remaining evidence of the orig. cor.; however, this position is harmoniously related to existing local control adopted in this resurvey and is accepted as the best available evidence of the orig. cor. position. Not remonumented".
- March 1, 1991** Lyle E. Moseng, LS 11943, while performing a survey in Section 9, notes a "Monument found" at this corner position. In his field book he also notes "CIM" at this corner.
- 1991-1994** Robin T. Mathews, Cadastral Surveyor, performed the dependent resurvey of Sections 13, 15 and 23. Mathews records in his field notes "monumented with a cast iron monument, 3½ ins. diam., firmly set, 16 ins. below the ground, with iron cap mkd. as described in the 1979 dependent resurvey. This cor is located in an open field."
- 2014** Jesse D. Zeig, LS 44996, prepared the unrecorded plat entitled UPPER SIOUX COMMUNITY RIGHT OF WAY PLAT NO. 3 TRUNK HIGHWAY NO. 274 & PRAIRE'S EDGE LANE REALIGNMENT. On this document he notes "Concrete Iron Monument" at this corner and dimensions to this corner position.
- September 14, 2017** The Minnesota Department of Transportation as part of State Project 4203-50 for Trunk Highway 23 noted "CIM down 12in" at this corner and gathered the county coordinates of this corner position.

STATEMENT OF EVIDENCE

Northeast Corner of Section 16, T115N-R39W

(Page 3 of 3)

March 28, 2025

Matthew D. Runke, LS 46171, found a Cast Iron Monument at this corner location. In 1974 Jesse Fant noted this area was a cultivated field and that he could not find any evidence of this corner position and placed a Cast Iron Monument. Fant also received parole evidence that the granite monument was removed by a previous landowner because he didn't like to plow around it. The Norgaard survey records indicate the corner might have been 34± feet north of the cast iron. An area extending 3' north, 3' south, 3' east and 3' west of a point on the section line and 34' north of the cast iron was probed and no additional evidence indicating the exact location of this section corner was recovered. The cultivation of this field appears to have destroyed any evidence of the Original Government Land Office Survey corner. Runke also looked for a monument at the east 1/16 corner of the northeast quarter of this section as noted by Peterman in 1895 but was unable to recover this monument. The position of this corner was verified by using former County Surveyor records, surveys, plats, BLM records and Minnesota Department of Transportation records, including 2 of the 3 section corner witness ties set by Fant in 1974. The Cast Iron Monument appears to be the best available evidence of the location of the Original Government Land Office Survey corner and was left as found.