

Doc# 284746 Fee: \$0.00 3 Pages

Property & Public Services  
Property Records Division  
Yellow Medicine County, Minnesota  
I hereby certify that the within instrument  
was filed on August 12, 2025 at 1:00 PM

Janel Timm, Yellow Medicine County Recorder

Alvin J. Fischer

## CERTIFICATE OF LOCATION OF GOVERNMENT CORNER

**East Quarter** Corner of Section **16**, Township **115**, Range **39**

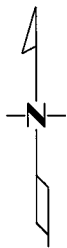
**Fifth** Principal Meridian, State of Minnesota, County of **Yellow Medicine**

At the corner location shown on the sketch:

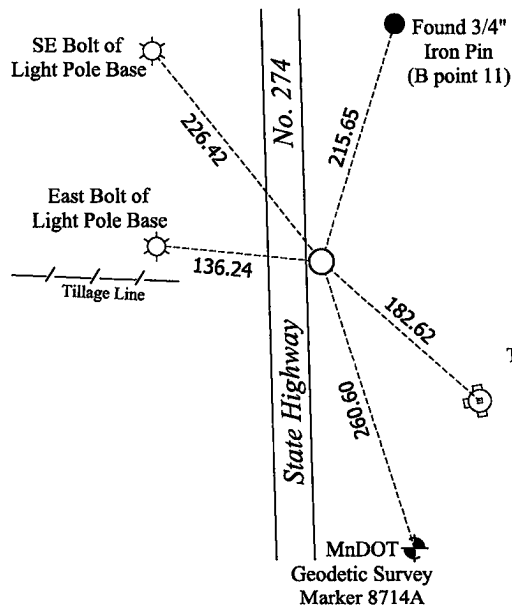
☒ On March 28, 2025 found a Cast Iron Monument  
DATE

☒ left monument as found ☐ lowered monument ☐ removed monument (explain)

☐ On \_\_\_\_\_ placed a \_\_\_\_\_  
DATE



Section 16



Section 15

**Yellow Medicine County Coordinates**  
(2011 Adj.)  
N= 182657.11 E= 592402.12

Statement of evidence for this corner location is on back of this page.

I hereby certify that this survey, plan, or report was prepared by me or under my direct supervision and that I am a duly Licensed Land Surveyor under the laws of the state of Minnesota.

Signature Matthew D. Runke Date 8/11/25  
Matthew D. Runke, Minnesota Registered Land Surveyor #46171

# ***STATEMENT OF EVIDENCE***

## ***East Quarter Corner of Section 16, T115N-R39W***

(Page 1 of 2)

- 1864** Chas E. Davis & J. W. Webb Jr. were contracted by the United States Government Land Office to perform the Original Public Land Survey in this township. Davis & Webb record in their field notes "Set post in mound with pits for quarter section corner."
- June 18, 1895** Jonah Peterman, County Surveyor, records in County Surveyors Record Book A, page 113 "1/4 with stone around it" at this corner and dimensions to this corner position.
- 1899-1901** John Norgaard, County Surveyor, records in the index of County Surveyors Record Book B that he "re-surveyed all the section corners except the township corners in the county" and "the monuments are all jasper granite 2 feet long and 6in x 6in." On page 11 he notes dimensions to this corner position.
- July 1913** John Norgaard, County Surveyor, records in County Surveyors Record Book A, page 293 the location of this corner and that it was used to establish the North line of the Southeast Quarter in section 15 but does not mention what type of monument was found.
- June 1914** John Norgaard, County Surveyor, records in County Surveyors Record Book A, page 322 the location of this corner and dimensions to this corner position but does not mention what type of monument was found.
- 1963** Minnesota Department of Transportation Highway Right of Way Map No. 16-48, Sheet 5 shows this corner position but does not mention what type of monument was found.
- Sept. 17, 1973** Jesse E. Fant, LS 3230, prepared a Certificate of Location of Government Corner and notes "Nothing was found" and placed a "Minnesota Highway Department Cast Iron Monument, 18in below ground, stamped 'east quarter cor. sec. 16'" at this corner position. Fant also notes "since the corner falls in a cultivated field and there are no occupation lines in the immediate area to determine the position of the corner on the ground, no excavation was made for this corner, East-west fence lines in place, which are west of the section line do not lead to a common position for the corner. The corner was set as a lost position."
- 1974** Minnesota Department of Transportation Highway Right of Way Map No. 180-4A, Sheets 1 and 2 note "Cast Iron Mon." at this corner and dimensions to this corner position.
- April 1974** Robert C. Jones, LS 11864, with the Minnesota Department of Transportation prepared section breakdown sheets for sections 15 and 16 as part of State Project 8701-18 for Trunk Highway No. 23, and notes "Cast Iron Mon." at this corner position. He also lists the project coordinates of this corner and the azimuth and distances between the adjacent section corners.
- 1975** Robert C. Jones, LS 11864, with the Minnesota Department of Transportation prepared a Survey report for State Project 8701-18 on Trunk Highway 23. In this report he notes a "Cast iron monument" at this corner along with the project coordinates of this corner position.
- Nov. 15, 1976** John E. Swenson, LS 10460, prepared the record plat entitled STATE HIGHWAY RIGHT OF WAY PLAT NO. 87-13, and notes a "M.H.D. Cast Iron Mon." at this corner and dimensions to this corner position.

# ***STATEMENT OF EVIDENCE***

## ***East Quarter Corner of Section 16, T115N-R39W***

(Page 2 of 2)

- 1979-1980** Stephen D. Douglas, Cadastral Surveyor, performed the dependent resurvey of Section 15. Douglas records in his field notes “there is no remaining evidence of the orig. cor. Not monumented”
- March 6, 1981** Robert C. Jones, LS 11864, prepared a Certificate of Location of Government Corner and notes he found nothing and placed a “Cast iron monument about 1 in below the surface of the ground” at this corner position. He also recorded 3 section corner witness ties.
- 1991-1994** Robin T. Mathews, Cadastral Surveyor, performed the dependent resurvey of Sections 13, 15, and 23. Mathews records in his field notes “Cor. is located on the E. edge of Minnesota Highway No. 274” but does not mention what type of monument was found.
- December 6, 2001** Larry L. Zeig, LS 19791, while performing a survey in Section 16, notes an “Iron” at this corner and dimensions to this corner position.
- Dec. 19, 2002** Roy Marihart, LS 19092, while performing a survey in Section 15, notes “Found Corner Monument” at this corner and dimensions to this corner position.
- 2014** Jesse D. Zeig, LS 44996, prepared the unrecorded plats entitled UPPER SIOUX COMMUNITY RIGHT OF WAY PLAT NO. 3 TRUNK HIGHWAY NO. 274 & PRAIRIE’S EDGE LANE REALIGNMENT, UPPER SIOUX COMMUNITY RIGHT OF WAY PLAT NO. 4 PRAIRIES EDGE LANE and UPPER SIOUX COMMUNITY RIGHT OF WAY PLAT NO. 5 560TH STREET. On these documents he notes a “Concrete Iron Monument” at this corner and dimensions to this corner position.
- January 12, 2018** Joshua M. Stern, LS 46169, while performing a survey in Section 15, notes a “Cast Iron Monument” at this corner and dimensions to this corner position.
- October 2, 2018** Matthew J. Schagel, LS 24640, prepared a Certificate of Location of Government Corner and notes he found a “Bent  $\frac{3}{4}$  in iron pin” and placed a “MnDOT cast iron monument above a new  $\frac{3}{4}$  in iron pin” at this corner position. He also recorded 4 section corner witness ties.
- February 24, 2020** Joshua M. Stern, LS 46169, while performing a survey in Section 15, notes a “Cast Iron Monument” at this corner and dimensions to this corner position.
- March 28, 2025** Matthew D. Runke, LS 46171, found a Cast Iron Monument at this corner location. In 1973 Jesse Fant noted this area was a cultivated field and that he could not find any evidence of this corner position and placed a Cast Iron Monument. This cast iron monument position was remonumented by MnDOT in 1981 and 2018 after road construction projects. The Norgaard survey records indicate the corner might have been 17± feet north of the cast iron, however this area is in a cut section of the road, and any evidence of the Original Government Land Office Survey corner would have been destroyed during road construction. The position of this corner was verified by using former County Surveyor records, surveys, plats, BLM records and Minnesota Department of Transportation records, including 1 of the 3 section corner witness ties set by Jones in 1981 and all 4 section corner witness ties set by Schlagel in 2018. The Cast Iron Monument appears to be the best available evidence of the location of the Original Government Land Office Survey corner and was left as found.