

Doc# 284747 Fee: \$0.00 3 Pages

Property & Public Services  
Property Records Division  
Yellow Medicine County, Minnesota  
I hereby certify that the within instrument  
was filed on August 12, 2025 at 1:00 PM

Janel Timm, Yellow Medicine County Recorder

Aligail L Fischer

## CERTIFICATE OF LOCATION OF GOVERNMENT CORNER

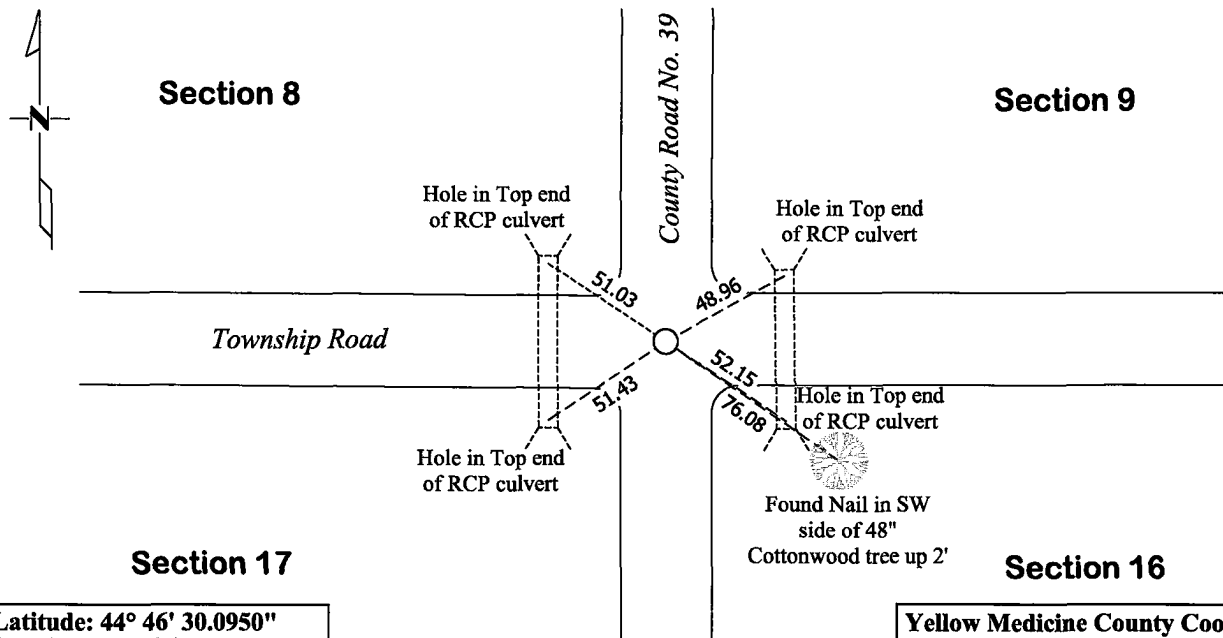
**Northeast**

Corner of Section **17**, Township **115**, Range **39**

**Fifth** Principal Meridian, State of Minnesota, County of **Yellow Medicine**

At the corner location shown on the sketch:

- ☒ On June 5, 2024 found a 6" x 6" Square Cut Granite Stone  
DATE
- ☒ left monument as found ☐ lowered monument ☐ removed monument (explain)
- ☒ On January 28, 2025 placed a 5/8" x 15" Rebar with a 46169-46171-62454 Stamped Plastic Cap  
DATE  
at the location of the 6" x 6" Square Cut Granite Stone



Statement of evidence for this corner location is on back of this page.

I hereby certify that this survey, plan, or report was prepared by me or under my direct supervision and that I am a duly Licensed Land Surveyor under the laws of the state of Minnesota.

Signature

Matthew D. Runke

Date

8/11/25

Matthew D. Runke, Minnesota Registered Land Surveyor #46171

**STATEMENT OF EVIDENCE**  
**Northeast Corner of Section 17, T115N-R39W**

---

(Page 1 of 2)

- 1864** Chas E. Davis & J. W. Webb Jr. were contracted by the United States Government Land Office to perform the Original Public Land Survey in this township. Davis & Webb record in their field notes "Set post in mound with pits for corner."
- June 1, 1874** Ole Quam, County Surveyor, records in County Surveyors Record Book A, page 8 the location of this corner and dimensions to this corner position but does not mention what type of monument was found.
- June 26, 1885** Geo E. Olds, County Surveyor, records in County Surveyors Record Book A, page 82 the location of this corner and dimensions to this corner position but does not mention what type of monument was found.
- March 5, 1892** Jonah Peterman, County Surveyor, records in County Surveyors Record Book A, page 54 "Stone" at this corner position.
- 1899-1901** John Norgaard, County Surveyor, records in the index of County Surveyors Record Book B that he "re-surveyed all the section corners except the township corners in the county" and "the monuments are all jasper granite 2 feet long and 6in x 6in." On page 11 he notes dimensions to this corner position. On pages 76 he notes "Found stone at the intersection of roads set by adjoining landowners in the government mound when the corner plain. Set top of monument level with ground."
- June 1911** John Norgaard, County Surveyor, records in County Surveyors Record Book A, page 240 "Found NW, SW and SE cor" of section 16 and dimensions to the corner but does not mention what type of monument was found at this corner position.
- 1914** John Norgaard, County Surveyor, records in County Surveyors Record Book A, page 332 the location of this corner and dimensions to this corner position but does not mention what type of monument was found.
- 1959** Yellow Medicine County Highway Engineer Section Corner Ties note "Granite mon. 2ft deep" at this corner position and established 6 section corner witness ties.
- 1960** Yellow Medicine County Highway Engineer Field Book for County Road No. 39, County Project No. 87-639-01, page 12, notes "Located 6in x 6in granite mon. 2ft below surface. Placed iron pin and tied as shown" at this corner position and established 3 section corner witness ties.
- 1960** Yellow Medicine County Highway Engineer Road Plans for County Road No. 39, State Project No. 87-639-01, Sheet 4, notes "6in X 6in granite mon. 2' below surface" at this corner and lists the stationing at this corner position.
- October 20, 1971** Jesse E. Fant, LS 3230, prepared a Certificate of Location of Government Corner and notes he found a "6in x 6in x 24in Granite Monument also a 3/8in x 24in Iron Pin over Monument" and placed a "Minnesota Highway Department cast iron monument" at this corner position. He also recorded 4 section corner witness ties.

***STATEMENT OF EVIDENCE***  
***Northeast Corner of Section 17, T115N-R39W***

---

(Page 2 of 2)

- April 1974** Robert C. Jones, LS 11864, with the Minnesota Department of Transportation prepared section breakdown sheets for Sections 9 and 16 as part of State Project 8701-18 for Trunk Highway No. 23, and notes "Cast Iron Mon." at this corner position. He also lists the project coordinates of the section corner and the azimuth and distances between the adjacent section corners.
- 1975** Robert C. Jones, LS 11864, with the Minnesota Department of Transportation prepared a Survey report for State Project 8701-18 for Trunk Highway 23. In this report he notes a "Cast Iron Monument" at this corner along with the project coordinates of this corner position.
- March 1, 1991** Lyle E. Moseng, LS 11943, while performing a survey in Section 9, notes a "Monument found" at this corner position. In his field book he notes "My rerod and seal on top of MINN HWY DEPT. CIM" at this corner.
- May 24, 2017** Daniel L. Bueltel, LS 43844, while performing a survey in Section 8, notes "Monument found" at this corner and dimensions to this corner position.
- Unknown Date** Roy Marihart, LS 19092, while performing a survey in Section 16, notes "Found corner monument" at this corner and dimensions to this corner position.
- 2023** Yellow Medicine County Highway Engineer Road Plans for County Road No. 39, State Project 087-639-007, Sheet 15 notes this corner and the stationing of this corner position but does not mention what type of monument was found.
- June 5, 2024** Matthew D. Runke, LS 46171, found no existing surface monumentation at this corner position as the road was under construction. With the aid of a backhoe a 3.0' deep hole was dug that covered an area extending 3' North, 7' South, 3' East, and 2' West of the location of the former Cast Iron Monument. At a depth of 1.6' a 14" x 10" red stone round in shape was found. At a depth of 2.7' a 6" x 6" square cut red granite (Jasper) stone was found tipped to the south with a 3" x 6" x 13" field stone along its south side. The base of the 6" x 6" Jasper stone is directly under the former cast iron monument position. The original topsoil was found at a depth of 2.7'. This Jasper stone was placed by Norgaard between 1899-1901 at the location of a found stone set by the adjoining landowners in the government mound when the corner was plain. The 6" x 6" Jasper stone is the best available evidence of the location of the Original Government Land Office Survey corner. A 5/8" x 15" Rebar with a "46169-46171-62454" stamped plastic cap was set at the location of the 6" x 6" Jasper stone, near the surface of the road once the road construction was completed. The coordinates of this section corner were recorded in the Yellow Medicine County Coordinate System (2011 adjustment) and the Latitude and Longitude coordinates listed were derived using the MnCON software.