

Doc# 284749 Fee: \$0.00 4 Pages

Property & Public Services  
Property Records Division  
Yellow Medicine County, Minnesota  
I hereby certify that the within instrument  
was filed on August 12, 2025 at 1:00 PM

Janel Timm, Yellow Medicine County Recorder

Alison L. Fischer

## CERTIFICATE OF LOCATION OF GOVERNMENT CORNER

**Northeast** Corner of Section **20**, Township **115**, Range **39**

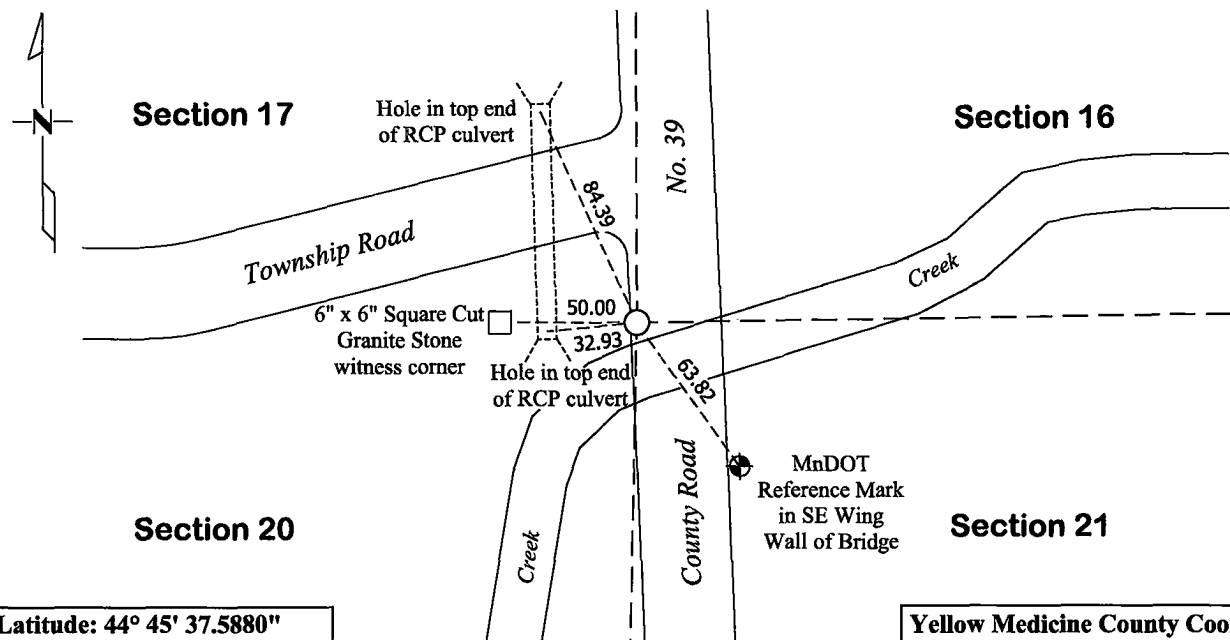
**Fifth** Principal Meridian, State of Minnesota, County of **Yellow Medicine**

At the corner location shown on the sketch:

☒ On June 5, 2024 found a 6" x 6" Square Cut Granite Stone at the Witness Corner  
DATE

☒ left monument as found ☐ lowered monument ☐ removed monument (explain)

☒ On January 28, 2025 placed a Survey Spike and Washer in the Bridge Deck  
DATE



Latitude: 44° 45' 37.5880"  
Longitude: -95° 33' 53.1202"  
(NAD 83)

Yellow Medicine County Coordinates  
(2011 Adj.)  
N= 179945.90 E= 587087.63

Statement of evidence for this corner location is on back of this page.

I hereby certify that this survey, plan, or report was prepared by me or under my direct supervision and that I am a duly Licensed Land Surveyor under the laws of the state of Minnesota.

Signature

Matthew D. Runke

Date

8/11/25

Matthew D. Runke, Minnesota Registered Land Surveyor #46171

**STATEMENT OF EVIDENCE**  
**Northeast Corner of Section 20, T115N-R39W**

---

(Page 1 of 3)

- 1864** Chas E. Davis & J. W. Webb Jr. were contracted by the United States Government Land Office to perform the Original Public Land Survey in this township. Davis & Webb record in their field notes "To edge of ravine bears NE & SW and set post in mound with pits for corner."
- June 26, 1885** Geo E. Olds, County Surveyor, records in County Surveyors Record Book A, page 82 "established the cor of 16-17-20 and 21" at this corner and dimensions to this corner position but does not mention what type of monument was set.
- 1899-1901** John Norgaard, County Surveyor, records in the index of County Surveyors Record Book B that he "re-surveyed all the section corners except the township corners in the county" and "the monuments are all jasper granite 2 feet long and 6in x 6in." On page 76 he notes "Found stake set by Fairbanks according to old corner. Set top of monument 5in above ground".
- June 1911** John Norgaard, County Surveyor, records in County Surveyors Record Book A, page 240 "Found NW-SW & SE cor" of section 16 and dimensions to this corner position but does not mention what type of monument was found.
- July 1911** John Norgaard, County Surveyor, records in County Surveyors Record Book A, page 246 "Found stone monument" at this corner and dimensions to this corner position.
- October 1914** County Surveyors Record Book A, page 338 notes "W.C. jasper monument 100ft west and 12ft South" of this corner and dimensions to this corner position.
- 1915** The Great Northern Railway Company Railroad Right of Way Map No. 959D, Sheet No. 11 notes this corner position and lists the station of the section line crossing and the distance from this corner to the center line crossing but does not mention what type of monument was found.
- May 1922** John Norgaard, County Surveyor, records in County Surveyors Record Book A, page 460 "W cor. 50ft west" at this corner position.
- 1924** County Surveyors Record Book A, page 454 notes "W.C. 100ft west and 12ft south. Set mont." at this corner position.
- 1960** Yellow Medicine County Highway Engineer Road Plans for County Road No. 39, State Project No. 87-639-01, Sheet 3, notes "sec cor assumed" at this corner position.
- Unknown Date** Yellow Medicine County Highway Engineer Section Corner Ties note "Sec cor in ditch" at this corner position and established 1 section corner witness tie.
- 1973** Minnesota Department of Transportation Highway Right of Way Map No. 180-3B, Sheet 11 notes this corner and dimensions to this corner position but does not mention what type of monument was found.

**STATEMENT OF EVIDENCE**  
**Northeast Corner of Section 20, T115N-R39W**

---

(Page 2 of 3)

- July 27, 1973** Richard M. Knofezynski, LS 11526, with the Minnesota Department of Transportation prepared section breakdown sheets for sections 20 and 21 as part of state project 8701-18 for Trunk Highway No. 23 and notes a "Stone Mon." witness corner 50' west of this corner position. He also lists the project coordinates of this witness corner and the azimuth and distances between the adjacent section corners.
- Sept. 29, 1973** John E. Swenson, LS 10460, prepared a Certificate of Location of Government Corner and notes he found a "6in x 6in x 24in granite monument which is the witness corner to the section corner. The section corner falls in a drainage ditch" at this corner position.
- April 9, 1974** Robert C. Jones, LS 11864, with the Minnesota Department of Transportation prepared a section breakdown sheet for section 16 as part of state project 8701-18 for Trunk Highway No. 23 and notes a "Stone Mon." witness corner 50' west of this corner position. He also lists the project coordinates of the section corner and the azimuth and distances between the adjacent section corners.
- 1975** Robert C. Jones, LS 11864, with the Minnesota Department of Transportation prepared a Survey report for State Project 8701-18 for Trunk Highway 23. In this report he notes a "Granite Witness Mon. 50' West" at this corner along with the project coordinates and dimensions to this corner position.
- Sept. 3, 1975** John E. Swenson, LS 10460, prepared the record plat entitled STATE HIGHWAY RIGHT OF WAY PLAT NO. 87-11, and notes a "Concrete or Stone Monument" at the witness corner and dimensions to the witness corner and this corner position.
- Nov. 15, 1976** John E. Swenson, LS 10460, prepared the record plat entitled STATE HIGHWAY RIGHT OF WAY PLAT NO. 87-12, and notes a "6in x 6in Granite mon. at Witness Corner" and dimensions to the witness corner and this corner position.
- Unknown Date** West Central Land Services prepared a section breakdown sheet for Section 21 and notes this corner position along with the project coordinates and the bearing and distances between the adjacent section corners but does not mention what type of monument was found.
- March 30, 1994** Lyle E. Moseng, LS 11943, prepared the record plat entitled YELLOW MEDICINE COUNTY HIGHWAY DEPARTMENT RIGHT OF WAY PLAT NO. 87-639-04, and notes "Concrete or Stone Monument" at this corner and dimensions to this corner position.
- August 26, 1994** Robert C. Jones, LS 11864, with the Minnesota Department of Transportation prepared a section breakdown sheet for Section 21 as part of the Granite Falls Airport project and notes this corner position along with the project coordinates and the azimuth and distances between the adjacent Section Corners but does not mention what type of monument was found.
- Dec. 19, 1994** Robert C. Jones, LS 11864, prepared the record plat entitled MINNESOTA DEPARTMENT OF TRANSPORTATION RIGHT OF WAY PLAT NO. 87-23, and notes "6in x 6in Granite Monument at witness corner 50.00 feet west" at this corner and dimensions to this corner position.
- July 12, 2013** Joshua M. Stern, LS 46169, while performing a survey in Section 21, notes a "Stone monument" witness corner 50.00 feet west of this corner position.

# ***STATEMENT OF EVIDENCE***

## ***Northeast Corner of Section 20, T115N-R39W***

(Page 3 of 3)

- Unknown Date** Roy Marihart, LS 19092, while performing a survey in Section 16, notes the location of this corner and dimensions to this corner position but does not mention what type of monument was found.
- 2023** Yellow Medicine County Highway Engineer Road plans for County Road No. 39, State Project 087-639-007, sheet 14 notes this corner and the stationing of this corner position but does not mention what type of monument was found.
- June 5, 2024** Matthew D. Runke, LS 46171, searched with a metal locator and found no existing surface monumentation at this corner position. The location of this corner lands in a bridge deck over a ditch and any evidence of the original government land office survey monument would have been destroyed by the construction of this ditch. Runke found a 6" x 6" square cut red granite (Jasper) stone tipped to the east that was set as a witness corner 50' west of this corner position as noted by Norgaard in 1922. The position of this corner was verified by using former County Surveyor records, surveys, plats, County Engineer records and Minnesota Department of Transportation records. A survey spike and washer was set in the bridge deck at this corner position. The coordinates of this section corner were recorded in the Yellow Medicine County Coordinate System (2011 adjustment) and the Latitude and Longitude coordinates listed were derived using the MnCON software.