

Doc# 284750 Fee: \$0.00 3 Pages

Property & Public Services
Property Records Division
Yellow Medicine County, Minnesota
I hereby certify that the within instrument
was filed on August 12, 2025 at 1:00 PM

Janel Timm, Yellow Medicine County Recorder

Aligail L. Fischer

CERTIFICATE OF LOCATION OF GOVERNMENT CORNER

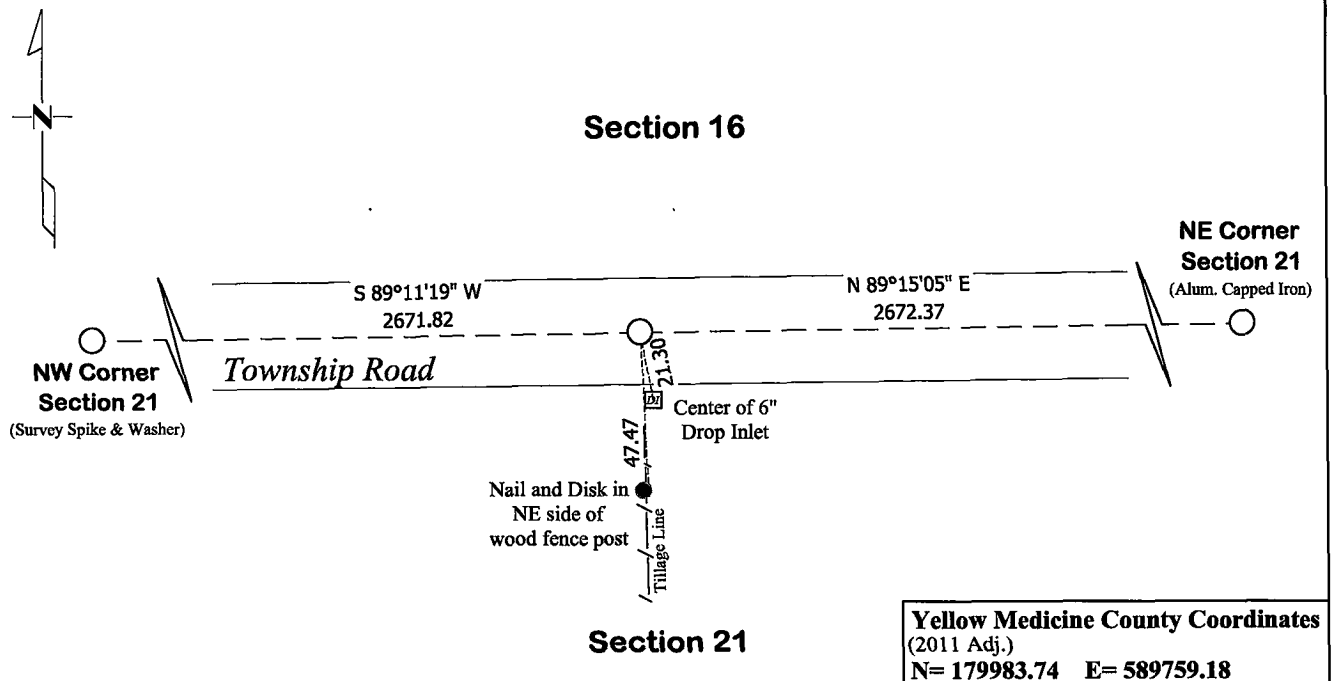
North Quarter Corner of Section **21**, Township **115**, Range **39**
Fifth Principal Meridian, State of Minnesota, County of **Yellow Medicine**

At the corner location shown on the sketch:

☒ On July 15, 2025 found a Cast Iron Monument
DATE

☐ left monument as found ☐ lowered monument ☐ removed monument (explain)

☒ On July 25, 2025 placed a Reset the Cast Iron Monument
DATE



Statement of evidence for this corner location is on back of this page.

I hereby certify that this survey, plan, or report was prepared by me or under my direct supervision and that I am a duly Licensed Land Surveyor under the laws of the state of Minnesota.

Signature Matthew D. Runke Date 8/11/25
Matthew D. Runke, Minnesota Registered Land Surveyor #46171

STATEMENT OF EVIDENCE
North Quarter Corner of Section 21, T115N-R39W

(Page 1 of 2)

- 1864** Chas E. Davis & J. W. Webb Jr. were contracted by the United States Government Land Office to perform the Original Public Land Survey in this township. Davis & Webb record in their field notes "Set post in mound with pits for quarter section corner."
- June 1911** John Norgaard, County Surveyor, records in County Surveyors Record Book A, page 240 "S¼ post left nothing" and dimensions to this corner position.
- October 1914** John Norgaard, County Surveyor, records in County Surveyors Record Book A, page 338 "located at equal dist bet sec cors. Set stone on south side of road grade" at this corner and dimensions to the corner position.
- 1963** Minnesota Department of Transportation Highway Right of Way Map No. 16-48, sheets 3 and 4 notes "¼ Cor. Established 1-18-68 by Arbie E. Nelson Placed C. I. Mon." at this corner position and lists the station of the section line crossing. They also list 2 section corner witness Ties.
- 1968** According to the Certificate of Location of Government Corner prepared by Jesse Fant in 1970. "Arbie E. Nelson, a private Land Surveyor, re-established this quarter corner equidistant and on line between section corners in 1968 and placed the Minnesota Highway Department cast iron monument."
- December 16, 1970** Jesse E. Fant, LS 3230, prepared a Certificate of Location of Government Corner and notes he found a "Minnesota Highway Department Cast Iron Monument (20inx6inx4in) 6in below township road surface" and left the monument as found. He also recorded 2 section corner witness ties.
- 1973** Minnesota Department of Transportation Highway Right of Way Map No. 180-3B, sheet 11 for Trunk Highway No. 23 notes "Cast Iron Monument" at this corner position and lists the station of the section line crossing and the distance from this corner to the center line crossing.
- July 27, 1973** Richard M. Knofezynski, LS 11526, with the Minnesota Department of Transportation prepared a section breakdown sheet for Section 21 as part of State Project 8701-18 for Trunk Highway No. 23, and notes "Cast Iron Mon." at this corner position. He also lists the project coordinates of this corner and the azimuth and distances between the adjacent section corners.
- 1974** Minnesota Department of Transportation Highway Right of Way Map No. 180-4A, sheet 1 notes "Cast Iron Mon." at this corner position and lists the station of the section line crossing and the distance from this corner to the center line crossing.
- April 9, 1974** Robert C. Jones, LS 11864, with the Minnesota Department of Transportation prepared a section breakdown sheet for Section 16 as part of State Project 8701-18 for Trunk Highway No. 23, and notes "Cast Iron Mon." at this corner position. He also lists the project coordinates of this corner and the azimuth and distances between the adjacent section corners.
- 1975** Robert C. Jones, LS 11864, with the Minnesota Department of Transportation prepared a Survey report for State Project 8701-18 for Trunk Highway 23. In this report he notes a "CAST IRON MONUMENT" at this corner along with the project coordinates, and dimensions to this corner position.

STATEMENT OF EVIDENCE

North Quarter Corner of Section 21, T115N-R39W

(Page 2 of 2)

- Sept. 3, 1975** John E. Swenson, LS 10460, prepared the record plat entitled STATE HIGHWAY RIGHT OF WAY PLAT NO. 87-11, and notes "M.H.D. Cast Iron Mon." at this corner and dimensions to this corner position.
- Nov. 15, 1976** John E. Swenson, LS 10460, prepared the record plats entitled State Highway Right of Way Plat No. 87-12 and State Highway Right of Way Plat No. 87-13, and notes "M.H.D. Cast Iron Mon." at this corner and dimensions to this corner position.
- Unknown Date** West Central Land Services prepared a section breakdown sheet for Section 21 and notes this corner position along with the project coordinates and the bearing and distances between the adjacent section corners.
- August 26, 1994** Robert C. Jones, LS 11864, with the Minnesota Department of Transportation prepared a section breakdown sheet for Section 21 as part of the Granite Falls Airport project and notes this corner position along with the project coordinates and the azimuth and distances between the adjacent section corners but does not mention what type of monument was found.
- Dec. 19, 1994** Robert C. Jones, LS 11864, prepared the record plat entitled MINNESOTA DEPARTMENT OF TRANSPORTATION RIGHT OF WAY PLAT NO. 87-23, and notes a "Cast Iron Monument" at this corner and dimensions to this corner position.
- Sept. 14, 2017** The Minnesota Department of Transportation as part of State Project 4203-50 for Trunk Highway 23 notes "CIM down 2in" at this corner and gathered the county coordinates of this corner position.
- Unknown Date** Roy Marihart, LS 19092, while performing a survey in Section 16, notes a "Found Corner monument" at this corner and dimensions to this corner position.
- July 15, 2025** Matthew D. Runke, LS 46171, found a Cast Iron Monument at this corner location. With the aid of a backhoe a 2.6' deep hole was dug that covered an area extending 3' north, 4' south, 6' east, and 6' west of the location of the Cast Iron Monument. At a depth of 1.7' the top of original topsoil was found. At a depth of 2.3' the top of clay was found. No additional evidence indicating the exact location of this section corner was recovered. In 1968 Arbie Nelson placed the Cast Iron Monument "equidistant and on line between section corners" which agrees with the position noted by Norgaard in 1914. The position of this corner was verified by using former County Surveyor records, surveys, plats, and Minnesota Department of Transportation records, including 1 of the 2 section corner witness ties recorded by Fant in 1970. The Cast Iron Monument appears to be the best available evidence of the location of the Original Government Land Office Survey corner. The Cast Iron Monument was reset in its original location.