

Doc# 284751 Fee: \$0.00 5 Pages

Property & Public Services
Property Records Division

Yellow Medicine County, Minnesota

I hereby certify that the within instrument
was filed on August 12, 2025 at 1:00 PM

Janel Timm, Yellow Medicine County Recorder

Aligail L. Fischer

CERTIFICATE OF LOCATION OF GOVERNMENT CORNER

Northeast

Corner of Section **21**, Township **115**, Range **39**

Fifth Principal Meridian, State of Minnesota, County of **Yellow Medicine**

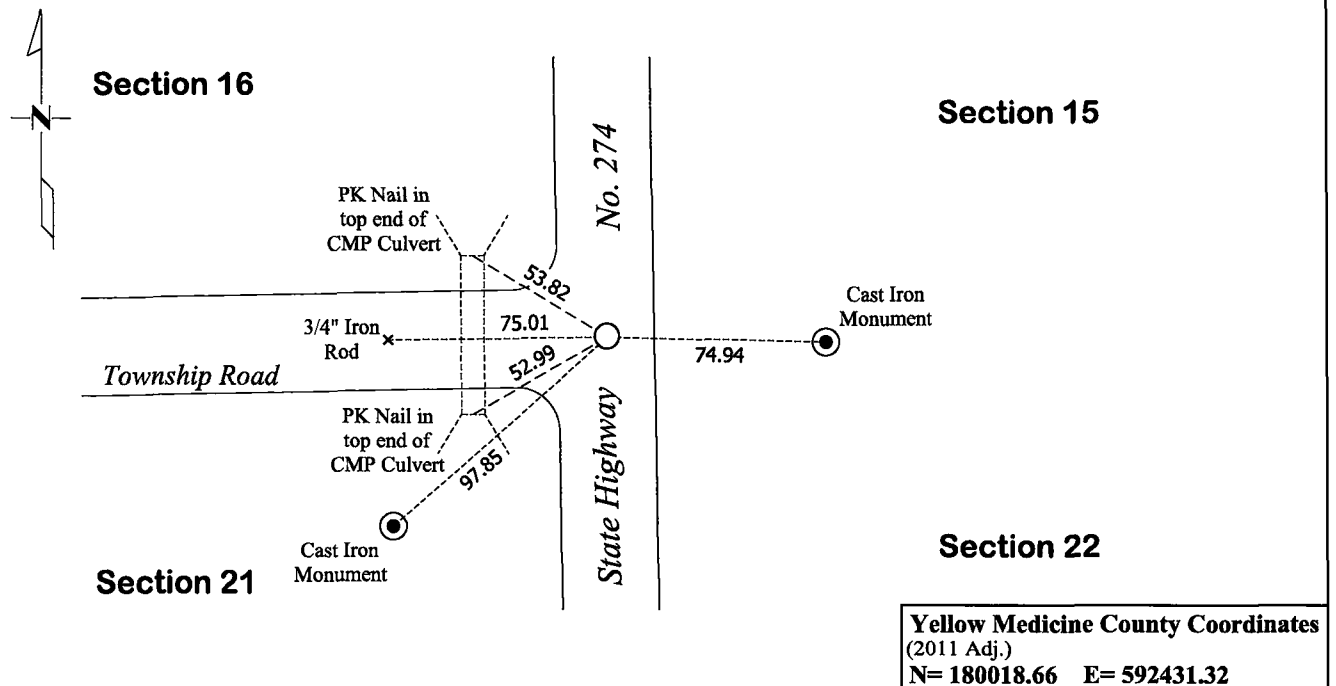
At the corner location shown on the sketch:

☒ On July 2, 2025 found a 5/8" Rebar and a Cast Iron Monument
DATE

☒ left monument as found ☐ lowered monument ☐ removed monument (explain)

☒ On July 25, 2025 placed a 5/8" x 12" Iron Rod with a "MN/DOT DISTRICT SURVEYS" stamped
DATE

Aluminum Cap at the location of the Cast Iron Monument



Statement of evidence for this corner location is on back of this page.

I hereby certify that this survey, plan, or report was prepared by me or under my direct supervision and that I am a duly Licensed Land Surveyor under the laws of the state of Minnesota.

Signature Matthew D. Runke Date 8/11/25
Matthew D. Runke, Minnesota Registered Land Surveyor #46171

STATEMENT OF EVIDENCE
Northeast Corner of Section 21, T115N-R39W

(Page 1 of 4)

- 1864** Chas E. Davis & J. W. Webb Jr. were contracted by the United States Government Land Office to perform the Original Public Land Survey in this township. Davis & Webb record in their field notes "Set post in mound with pits for corner."
- 1899-1901** John Norgaard, County Surveyor, records in the index of County Surveyors Record Book B that he "re-surveyed all the section corners except the township corners in the county" and "the monuments are all jasper granite 2 feet long and 6in x 6in." On page 11 he notes dimensions to this corner position. On page 76 he notes "Found stone in the center of road running north and south set by adjoining landowner in the government mound when the corner were plain. Set top of monument level with ground."
- June 1911** John Norgaard, County Surveyor, records in County Surveyors Record Book A, page 240 "Found NW – SW and SE cor." of section 16 and dimensions to this corner position but does not mention what type of monument was found.
- June 1914** John Norgaard, County Surveyor, records in County Surveyors Record Book A, page 322 the location of this corner and dimensions to this corner position but does not mention what type of monument was found.
- Oct. 1914** John Norgaard, County Surveyor, records in County Surveyors Record Book A, page 338, the location of this corner and dimensions to this corner position. He also shows 2 section corner witness ties but does not mention what type of monument was found.
- 1933** Minnesota Department of Transportation Field Book No. 4 for State Project 8707, Alignment – Land Ties - Topog for Trunk Highway No. 67, page 2 notes "Sec Cor. is 5.7' ahead of and 3.4' to left of 0+00" at this corner position but does not mention what type of monument was found.
- 1958** Minnesota Department of Transportation Field Book No. 1 for State Project 8714, Alignment – Land Ties for Trunk Highway No. 274, pages 2-12 & 2-38 notes "Sec. Cor. Estab 1/25/68 by A. E. Nelson G.R.F. to be monu. in spring of 1968" at this corner but does not mention what type of monument was found. They also established 3 section corner witness ties.
- 1963** Minnesota Department of Transportation Highway Right of Way Map No. 16-48, sheets 3, 4 & 5 note "Sec. Cor. established 1-18-68 by Arbie E. Nelson placed C.I. Mon. (Down 6in)" at this corner and lists the stationing of this corner position. They also show 3 Section corner witness ties.
- 1965** Yellow Medicine County Highway Engineer Section Corner Ties note "Mon. 6in deep" at this corner position and established 5 section corner witness ties but does not mention what type of monument was found.
- 1968** Minnesota Department of Transportation Field Book No. 4 for State Project 8714, Alignment – Land Ties for Trunk Highway No. 274, page 4-23 notes "I.P. INP" at this corner and lists the stationing of this corner position. It also lists 2 Section corner witness ties.

STATEMENT OF EVIDENCE
Northeast Corner of Section 21, T115N-R39W
(Page 2 of 4)

- December 16, 1970** Jesse E. Fant, LS 3230, prepared a Certificate of Location of Government Corner and notes he found a "Minnesota Highway Department cast iron monument (20in x 6in x 4in) 2in below road surface" and left the monument as found. He also recorded 2 section corner witness ties.
- 1971** Minnesota Department of Transportation Field Book No. 6 for State Project 8714, Alignment – Land Ties for Trunk Highway No. 274, pages B1-11 & B1-17 note "Cast Iron Mon. Inp." at this corner and lists the stationing of this corner position along with 2 section corner witness ties.
- July 27, 1973** Richard M. Knofezynski, LS 11526, with the Minnesota Department of Transportation prepared a section breakdown sheet for Section 21 as part of State Project 8701-18 for Trunk Highway No. 23, and notes "Cast Iron Mon." at this corner position. He also lists the project coordinates of this corner position.
- 1974** Minnesota Department of Transportation Highway Right of Way Map No. 180-4A, sheet 1 notes "Cast Iron Mon." at this corner and dimensions to this corner position.
- April 1974** Robert C. Jones, LS 11864, with the Minnesota Department of Transportation prepared section breakdown sheets for Sections 15 and 16 as part of State Project 8701-18 for Trunk Highway No. 23, and notes "Cast Iron Mon." at this corner position. He also lists the project coordinates of this corner and the azimuth and distances between the adjacent section corners.
- 1975** Robert C. Jones, LS 11864, with the Minnesota Department of Transportation prepared a Survey report for State Project 8701-18 for Trunk Highway No. 23. In this report he notes a "Cast Iron Monument" at this corner along with the project coordinates of this corner position.
- Nov. 15, 1976** John E. Swenson, LS 10460, prepared the record plat entitled STATE HIGHWAY RIGHT OF WAY PLAT NO. 87-13, and notes a "M.H.D. Cast Iron Mon." at this corner and dimensions to this corner position.
- 1979-1980** Stephen D. Douglas, Cadastral Surveyor, performed the dependent resurvey of Section 15. Douglas records in his field notes "perpetuated and recorded by the Minnesota Highway Department, in 1970; monumented with a cast iron monument, 3½ ins. diam., firmly set, 2ins. below the surface of an asphalt road, bearing N. and S. at the intersection of a graded gravel road bearing W., with cap mkd. 'MINN HIGHWAY DEPARTMENT' There is no remaining evidence of the orig. cor.; however, this position is harmoniously related to existing local control adopted in this resurvey and is accepted as the best available evidence of the orig. cor. position. Not remonumented."
- March 1, 1988** Lowell R. Pommerening Jr., LS 17005, prepared a Certificate of Location of Government Corner and notes he found a "Minnesota Highway Department Cast Iron Monument, Down 0.3ft" and left the monument as found at this corner position. He also recorded 4 section corner witness ties to this corner position.
- May 11, 1988** Bert R. Eveland, LS 10516, while performing a survey in Section 15, notes a "Cast Iron Monument Found" at this corner and dimensions to this corner position.

STATEMENT OF EVIDENCE
Northeast Corner of Section 21, T115N-R39W
(Page 3 of 4)

Unknown Date	West Central Land Services prepared a section breakdown sheet for Section 21 and notes this corner position along with the project coordinates of this corner and the bearing and distances between the adjacent section corners but does not mention what type of monument was found.
1991-1994	Robin T. Mathews, Cadastral Surveyor, performed the dependent resurvey of Section 13, 15 and 23. Mathews records in his field notes "monumented with a cast iron monument, 3½ ins. diam., firmly set, 7ins. below a paved road, with iron cap mkd. as described in the 1979 dependent resurvey. This cor is located at the projected intersection of Minnesota Highway No. 274, bears N. and S., and a graded road bears W."
Aug. 26, 1994	Robert C. Jones, LS 11864, with the Minnesota Department of Transportation prepared a section breakdown sheet for Section 21 as part of the Granite Falls Airport and notes this corner position. He also lists the project coordinates of this corner and the azimuth and distances between the adjacent section corners but does not mention what type of monument was found.
Dec. 19, 2002	Roy Marihart, LS 19092, while performing a survey in Section 15, notes "Found Corner Monument" at this corner and dimensions to this corner position.
Unknown Date	Bolton-Menk, provided a CAD file of field work in Section 22 and notes a "I Pin old #5" at this corner position.
Nov. 17, 2012	Roy Marihart, LS 19092, while performing a survey in Sections 22 and 23, notes "Found Corner monument" at this corner and dimensions to this corner position.
2014	Jesse D. Zeig, LS 44996, prepared an unrecord plat entitled UPPER SIOUX COMMUNITY RIGHT OF WAY PLAT NO. 3 TRUNK HIGHWAY NO. 274 & PRAIRIE'S EDGE LANE REALIGNMENT, and notes "Iron pin" at this corner position.
Jan. 27, 2015	The Minnesota Department of Transportation as part of State Project 8714-12 for Trunk Highway 274 notes "½in rebar" at this corner and gathered the county coordinates of this corner position.
Sept. 14, 2017	The Minnesota Department of Transportation as part of State Project 4203-50 for Trunk Highway 23 notes "5/8in rebar down 2in" at this corner and gathered the county coordinates of this corner position.

STATEMENT OF EVIDENCE

Northeast Corner of Section 21, T115N-R39W

(Page 4 of 4)

July 2, 2025

Matthew D. Runke, LS 46171, found a 5/8" rebar at this corner location. The rebar monument was removed, and a cast iron monument was found directly under the rebar. Jesse Fant noted that in 1928 the county engineer showed a granite monument at the intersection of the state road and the township road to the west and that this granite monument was found again in 1965. He also notes the cast iron monument was placed by Arbie Nelson in 1968 at the intersection of the centerline of T.H. 274 with the centerline of the township road west and that the granite monument and the cast iron monument were destroyed during road grading operations in the summer of 1968. However, the position of the monument was referenced by a Minnesota Highway Department survey crew, and a cast iron monument was reset in 1970 using these 1968 reference marks. The granite monument appears to be the 6" x 6" square cut red granite (Jasper) stone placed by Norgaard between 1899 – 1901 where he found a stone set by an adjoining landowner in the government mound when the corner was plain. The position of this corner was verified by using former County Surveyor records, surveys, plats, County Engineer records, BLM records and Minnesota Department of Transportation records. The Cast Iron Monument at the location of the former Granite Stone appears to be the best available evidence of the location of the Original Government Land Office Survey corner and was left as found. A 5/8" x 12" Iron Rod with a "MN/DOT DISTRICT SURVEYS" stamped aluminum cap was set above the Cast Iron Monument near the surface of the road.