

Doc# 284752 Fee: \$0.00 3 Pages

Property & Public Services

Property Records Division

Yellow Medicine County, Minnesota

I hereby certify that the within instrument

was filed on August 12, 2025 at 1:00 PM

Janel Timm, Yellow Medicine County Recorder

Aligail L. Fischer

CERTIFICATE OF LOCATION OF GOVERNMENT CORNER

North Quarter

Corner of Section **22**, Township **115**, Range **39**

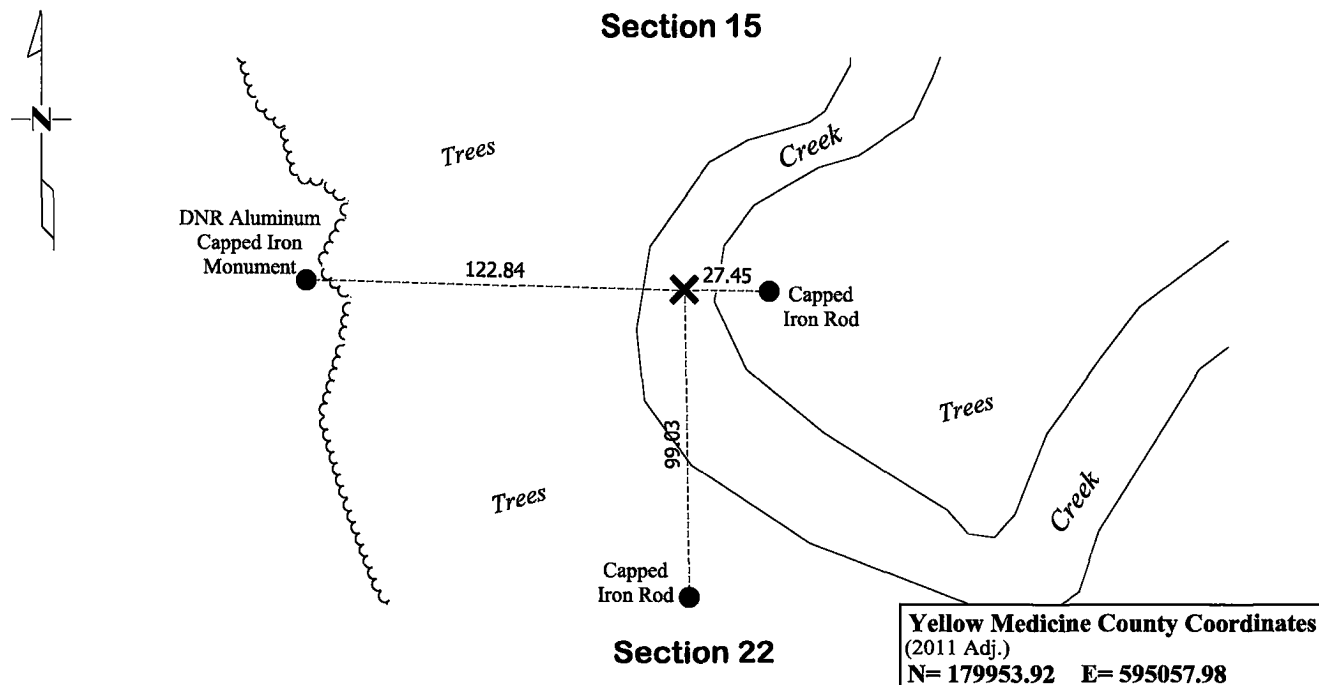
Fifth Principal Meridian, State of Minnesota, County of **Yellow Medicine**

At the corner location shown on the sketch:

☒ On March 27, 2025 found DNR Aluminum Capped Reference Monument
DATE

☒ left monument as found ☐ lowered monument ☐ removed monument (explain)

☒ On July 25, 2025 placed a County Coordinate Value (Corner is in Creek)
DATE



Statement of evidence for this corner location is on back of this page.

I hereby certify that this survey, plan, or report was prepared by me or under my direct supervision and that I am a duly Licensed Land Surveyor under the laws of the state of Minnesota.

Signature

Matthew D. Runke

Date

8/11/25

Matthew D. Runke, Minnesota Registered Land Surveyor #46171

STATEMENT OF EVIDENCE
North Quarter Corner of Section 22, T115N-R39W
(Page 1 of 2)

- 1864** Chas E. Davis & J. W. Webb Jr. were contracted by the United States Government Land Office to perform the Original Public Land Survey in this township. Davis & Webb record in their field notes "Set post for quarter section corner."
- June 18, 1895** Jonah Peterman, County Surveyor, records in County Surveyors Record Book A, page 113 "Where the field notes call for the south ¼ ought to be in the creek." at this corner and dimensions to this corner position.
- June 1914** John Norgaard, County Surveyor, records in County Surveyors Record Book A, page 322 the location of this corner and dimensions to this corner position but does not mention what type of monument was found.
- 1918** John Norgaard, County Surveyor, records in County Surveyors Record Book A, page 415 the location of this corner but does not mention what kind of monument was found.
- April 1974** Robert C. Jones, LS 11864, with the Minnesota Department of Transportation prepared a section breakdown sheet for Section 15 as part of, State Project 8701-18 for Trunk Highway No. 23 and lists the project coordinates of this corner position and the azimuth and distances between the adjacent section corners but does not mention what type of monument was found.
- Nov. 15, 1976** John E. Swenson, LS 10460, prepared the record plat entitled STATE HIGHWAY RIGHT OF WAY PLAT NO. 87-13, and notes "No Mon. Inp." at this corner and dimensions to this corner position.
- 1979-1980** Stephen D. Douglas, Cadastral Surveyor performed the dependent resurvey of Section 15. Douglas records in his field notes "Point for the ¼ sec. cor. of secs. 15 & 22, determined longitudinally by old fence line bearing N. and S. and latitudinally on line bet. the cor. of secs. 14, 15, 22 and 23 and the cor. of secs 15, 16, 21 and 22. There is no remaining evidence of the orig. cor.; however, this position is harmoniously related to existing local control adopted in this resurvey and is accepted as the best available evidence of the orig. cor. position. Not monumented. This cor. was found by John Norgaard, county surveyor, in 1896; the resurvey notes on file with the County recorder indicated the ¼ sec. cor. to be 40.82 chs. Dist. W. of the sec. cor."
- March 14, 1988** Lowell R. Pommerening Jr., LS 17005, prepared a Certificate of Location of Government Corner and notes he placed a "1¼in x 1¼in x 20in Perforated Steel Tube With Aluminum Cap Stamped 'DNR Survey Marker' up 0.3ft" as a reference monument to this corner position. He also recorded 4 section corner witness ties.
- May 11, 1988** Bert R. Eveland, LS 10516, while performing a survey in Section 15, notes a "DNR Survey Marker Set" as a reference monument to this corner and dimensions to this corner position.
- 1991-1994** Robin T. Mathews, Cadastral Surveyor performed the dependent resurvey of Sections 13, 15 and 23. Mathews records in his field notes "The ¼ sec. cor. of secs. 15 and 22, as described in the 1979 dependent resurvey. This cor. falls in Hazel Creek, 10 lks. wide, course SE."
- Dec. 19, 2002** Roy Marihart, LS 19092, while performing a survey in Section 15, dimensions to this corner position but does not mention what type of monument was found.

STATEMENT OF EVIDENCE

North Quarter Corner of Section 22, T115N-R39W

(Page 2 of 2)

- Unknown Date** Bolton-Menk provided a CAD file of field work in Section 22 and notes "DNR Ref Mon." at this corner position.
- Nov. 17, 2012** Roy Marihart, LS 19092, while performing a survey in Sections 22 & 23, notes "Found Corner Monument" at this corner and dimensions to this corner position.
- July 25, 2025** Matthew D. Runke, LS 46171, found no existing monumentation at this corner location. The location of this corner lands in a creek and any evidence of the original government land office survey monument would have been destroyed by erosion caused by the creek. Runke located the 1988 DNR reference monument west of this corner and capped iron monuments to the east and south of this corner position. The position of this corner was verified by using former County Surveyor records, surveys, plats, BLM records and Minnesota Department of Transportation records. A coordinate value was determined for this corner position based on the records of the Dependent Resurvey of Section 15, Dependent Resurvey of Sections 13, 15 and 23 and the 1988 DNR survey. The corner is on-line between the NW and NE corners of this section and at the prorated BLM distances along the north line of this section.