

Doc# 284753 Fee: \$0.00 4 Pages

Property & Public Services
Property Records Division

Yellow Medicine County, Minnesota

I hereby certify that the within instrument
was filed on August 12, 2025 at 1:00 PM

Janel Timm, Yellow Medicine County Recorder

Alison J. Fischer

CERTIFICATE OF LOCATION OF GOVERNMENT CORNER

Northeast

Corner of Section **22**, Township **115**, Range **39**

Fifth Principal Meridian, State of Minnesota, County of **Yellow Medicine**

At the corner location shown on the sketch:

☒ On March 27, 2025 found a 2 1/2" Aluminum Pipe with a 6" x 6" Square Cut Jasper Stone along its west side
DATE

☒ left monument as found

☐ lowered monument

☐ removed monument (explain)

☐ On _____ placed a _____
DATE

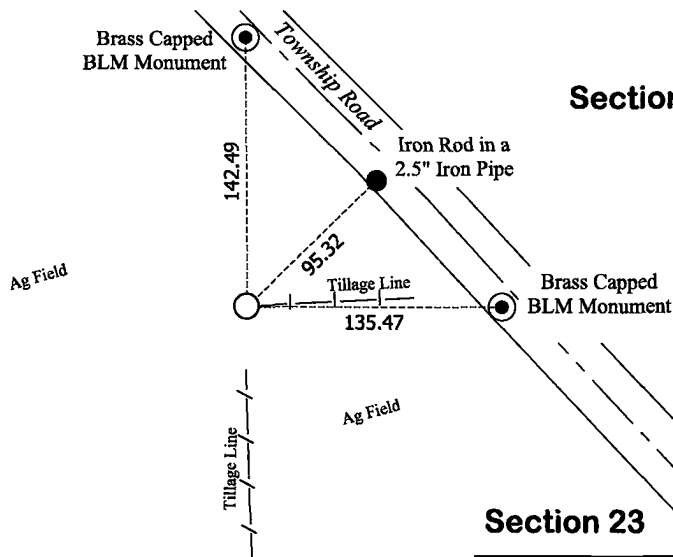


Section 15

Section 14

Section 22

Section 23



Yellow Medicine County Coordinates
(2011 Adj.)
N= 179887.61 E= 597748.67

Statement of evidence for this corner location is on back of this page.

I hereby certify that this survey, plan, or report was prepared by me or under my direct supervision and that I am a duly Licensed Land Surveyor under the laws of the state of Minnesota.

Signature

Matthew D. Runke

Date

8/11/25

Matthew D. Runke, Minnesota Registered Land Surveyor #46171

STATEMENT OF EVIDENCE
Northeast Corner of Section 22, T115N-R39W

(Page 1 of 3)

- 1864** Chas E. Davis & J. W. Webb Jr. were contracted by the United States Government Land Office to perform the Original Public Land Survey in this township. Davis & Webb record in their field notes "Set post in mound with pits for corner."
- Nov. 23-25, 1892** Jonah Peterman, County Surveyor, records in County Surveyors Record Book A, page 60 "Corner Stone" at this corner and dimensions to this corner position.
- Nov. 29-30, 1892** Jonah Peterman, County Surveyor, records in County Surveyors Record Book A, page 85 "Jasper Mont" at this corner and dimensions to this corner position.
- 1899-1901** John Norgaard, County Surveyor, records in the index of County Surveyors Record Book B that he "re-surveyed all the section corners except the township corners in the county" and "the monuments are all jasper granite 2 feet long and 6in x 6in." On page 76 he notes "Found stone in mound as had been used by me and other surveyors in the subdivision of adjoining sections set top of monument level with ground."
- June 1913** John Norgaard, County Surveyor, records in County Surveyors Record Book A, page 292 "Found Jasper Stone Monument as set by me at the resurvey of the county" at this corner and dimensions to the corner location.
- June 1914** John Norgaard, County Surveyor, records in County Surveyors Record Book A, page 322 the location of this corner and dimensions to this corner position but does not mention what type of monument was found.
- September 1929** John Norgaard, County Surveyor, records in County Surveyors Record Book A, page 415 the location of this corner and dimensions to the corner position but does not mention what type of monument was found.
- 1933** Minnesota Department of Transportation Field Book No. 2 for State Project 8707, Alignment – Land Ties – Topog for Trunk Highway No. 67, page 6 notes the location of this corner and the station and offset to this corner position but does not mention what type of monument was found.
- 1934** Minnesota Department of Transportation Highway Right of Way Map No. 4-72, sheet 1 notes "Field Stone" at this corner position.
- April 1974** Robert C. Jones, LS 11864, with the Minnesota Department of Transportation prepared section breakdown sheets for Section 15 as part of State Project 8701-18 for Trunk Highway No. 23, and notes "Conc mon. Stone mon." at this corner position. He also lists the project coordinates of this corner and the azimuth and distances between the adjacent section corners.
- July 10, 1974** Robert C. Jones, LS 11864, prepared a Certificate of Location of Government Corner and notes he found a "6 inch by 6 inch by 24 inch long granite monument at ground surface" and "drilled small depression in the top center of the monument" at this corner position. He also recorded 2 section corner witness ties.

STATEMENT OF EVIDENCE
Northeast Corner of Section 22, T115N-R39W

(Page 2 of 3)

- 1979-1980** Stephen D. Douglas, Cadastral Surveyor, performed the dependent resurvey of Section 15. Douglas records in his field notes "perpetuated and recorded by Jonah Peterman, county surveyor, in 1892, from orig. evidence no longer in existence; monumented with a granite stone, 6x6 ins., firmly set, projecting 12 ins. above the ground. This position is harmoniously related to existing local control adopted in this survey and is accepted as the best available evidence of the orig. cor. position. At the cor. point set an aluminum post, 30 ins, long, 2 ½ ins. diam., 18ins. in the ground with cap mkd. T115 R39W S15 S14 S22 S23 1979." And "Bury stone alongside aluminum post."
- March 1, 1988** Lowell R. Pommerening Jr., LS 17005, prepared a Certificate of Location of Government Corner and notes he found a "3¼in diameter aluminum BLM marker" and left the monument as found at this corner position.
- May 11, 1988** Bert R. Eveland, LS 10516, while performing a survey in Section 15, notes a "Brass Capped Monument Found" at this corner and dimensions to this corner position.
- 1989** Duane A. Bonnema, LS 14895, while performing a survey in Section 23, notes "Found Iron monument" at this corner and dimensions to this corner position.
- 1989** Duane A. Bonnema, LS 14895, prepared a section breakdown sheet for Section 23 and notes "Fd 3in Capped Alum. Mon alongside a Stone Mon. Alum. mon. is corner according to BLM notes" at this corner position. He also shows the azimuth and distances between the adjacent section corners.
- January 25, 1989** Duane A. Bonnema, LS 14895, prepared a Certificate of Location of Government Corner and notes he "Found old corner stone position perpetuated by a 1979 B.L.M. Survey" he also notes "Found Bureau of Land Management Monument in open field with 7in x 7in Red Granite Stone Monument along side" at this corner position. He also recorded 1 section corner witness tie.
- 1991-1994** Robin T. Mathews, Cadastral Surveyor, performed the dependent resurvey of Sections 13,15 and 23. Mathews records in his field notes "monumented with an aluminum post, 2½ ins. diam., firmly set, projecting 1 in. above the ground, with aluminum cap mkd. as described in the 1979 dependent resurvey" and "this cor. is located in an open field."
- May 1994** Robert C. Jones, LS 11864, prepared a Certificate of Location of Government Corner and notes he found a "64mm diameter aluminum B.L.M. monument with a 178mm square granite monument on the southwest side of it" at this corner position and left the monument as found.
- May 24, 1994** Robert C. Jones, LS 11864, with the Minnesota Department of Transportation prepared a section breakdown sheet for Section 23 as part of State Project 8707 for Trunk Highway No. 67, and lists the project coordinates of this corner position and the azimuth and distances between the adjacent section corners but does not mention what type of monument was found.
- December 3, 1995** Larry L. Zieg, LS 19791, while performing a survey in Section 15, notes a "Monument Found" at this corner and dimensions to this corner position.

STATEMENT OF EVIDENCE
Northeast Corner of Section 22, T115N-R39W

(Page 3 of 3)

- March 1, 1996** Jack M. Walkky, PE 20394, while performing a survey in Sections 13,14,15 and 23 notes a "PLSS monument" at this corner and dimensions to this corner position.
- 1996-1997** Richard T. Miller, Cadastral Surveyor, performed the dependent resurvey of Section 14. Miller records in his field notes "monumented with an aluminum post, 2½ ins. diam., firmly set, projecting 12 ins. above the ground, with cap mkd. as described in the 1979 dependent resurvey."
- July 15, 1997** Robert C. Jones, LS 11864, with the Minnesota Department of Transportation prepared a section breakdown sheet for Section 14 as part of State Project 8707 for Trunk Highway No. 67 and lists the project coordinates of this corner position and the azimuth and distances between the adjacent section corners but does not mention what type of monument was found.
- January 10, 2001** Larry L. Zieg, LS 19791, while performing a survey in Section 15, notes a "Monument Found" at this corner position.
- 2002-2007** Roy A. Marihart, LS 19092, while performing surveys in Sections 14, 15 and 23 notes "Found Corner Monument" at this corner and dimensions to this corner position.
- 2009** Aaron J. Mages, LS 45507, prepared an unrecord plat entitled UPPER SIOUX COMMUNITY RIGHT OF WAY PLAT NO. 1 RUBY LAKE ROAD & RIVER ROAD, and notes a "BLM Monument" at this corner and dimensions to this corner position.
- 2009-2010** Duane A. Bonnema, LS 14895, while performing surveys in Section 14, notes a "Granite stone with Drill Hole" and "Found Iron Monument from former Survey" at this corner position.
- August 23, 2011** Joshua M. Stern, LS 46169, while performing a survey in Section 14, notes a "Cast iron monument" at this corner and dimensions to this corner position.
- Nov. 17, 2012** Roy Marihart, LS 19092, while performing a survey in Section 22 and 23, notes a "Found Corner Monument" at this corner and dimensions to this corner position.
- 2015-2020** Joshua M. Stern, LS 46169, while performing surveys in Sections 14, 15 and 23 notes a "Brass monument" at this corner and dimensions to this corner position.
- Unknown Date** Bolton-Menk provided a CAD file of field work in Section 22 and notes "BLM Mon" at this corner position.
- March 27, 2025** Matthew D. Runke, LS 46171, found a 2½" aluminum pipe with a 6" x 6" square cut red granite (Jasper) stone on its west side at this corner location. The 2½" aluminum pipe was placed by Stephen Douglas between 1979-1980 in the original location of the Jasper stone and he noted he buried the stone alongside the aluminum post. The Jasper stone was placed by Norgaard between 1899-1901 at the location of a found stone in mound. The position of this corner was verified by using former County Surveyor records, surveys, plats, BLM records and Minnesota Department of Transportation records, including the reference monument set by Douglas in 1979. The 2½" aluminum pipe marking the original location of the 6" x 6" Jasper stone is the best available evidence of the location of the Original Government Land Office Survey corner, and the monument was left as found.