

Corners to be Indexed

N1/4 20-113-38
W1/4 20-113-38

Doc# 285132 Fee: \$0.00 2 Pages

Property & Public Services
Property Records Division
Yellow Medicine County, Minnesota
I hereby certify that the within instrument
was filed on October 17, 2025 at 9:30 AM

I hereby certify that this document and the data
contained herein was prepared by me or under
my direct supervision.



Daniel L. Bueltel

License No. 43844

10/10/2025
Date

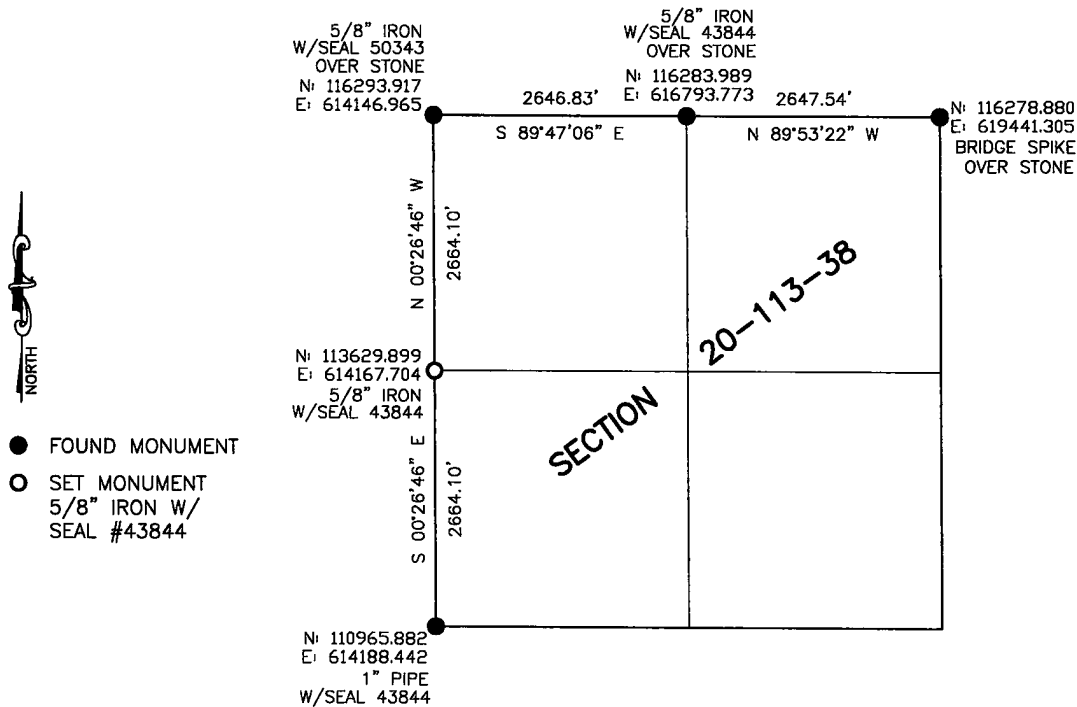
Janel Timm, Yellow Medicine County Recorder



CERTIFICATE OF LOCATION OF GOVERNMENT CORNER

Land survey monuments situated in Section 20, Township 113, Range 38, 5TH P.M.

STATE OF MINNESOTA, County of Yellow Medicine



Statement of Evidence

In 1858 E.N. Darling surveyed the township lines.

In 1864 C.C. Davis & J.W. Webb Jr. subdivided the township.

North Quarter Corner Section 20, T113N, R39W of the 5th P.M.

A survey by Jonah Peterman dated August 12, 1892 notes a stone monument at the corner.

On September 30, 2025 Buelte-Moseng Land Surveying dug with a backhoe, found remnants of a wood stake 2± feet below the road surface. Continued digging and found a 12" field stone 3± feet below the road surface, accepted the stone as the monument and placed a $\frac{5}{8}$ " iron with seal #43844 over top of the stone.

West Quarter Corner Section 20, T113N, R39W of the 5th P.M.

A survey by Jonah Peterman dated August 12, 1892 notes a stone monument at the corner.

On September 30, 2025 Buelte-Moseng Land Surveying dug a 5' x 8' wide hole with a backhoe midway and on line between the section corners and found nothing. Set a $\frac{5}{8}$ " iron with seal #43844 mid way and on line between the section corners.