

Doc# 285356 Fee: \$0.00 2 Pages

Property & Public Services
Property Records Division

Yellow Medicine County, Minnesota

I hereby certify that the within instrument
was filed on December 1, 2025 at 10:30 AM

Janel Timm, Yellow Medicine County Recorder

Alvin J. Fischer

CERTIFICATE OF LOCATION OF GOVERNMENT CORNER

West Quarter

Corner of Section **19**, Township **116**, Range **41**

Fifth

Principal Meridian, State of Minnesota, County of **Yellow Medicine**

At the corner location shown on the sketch:

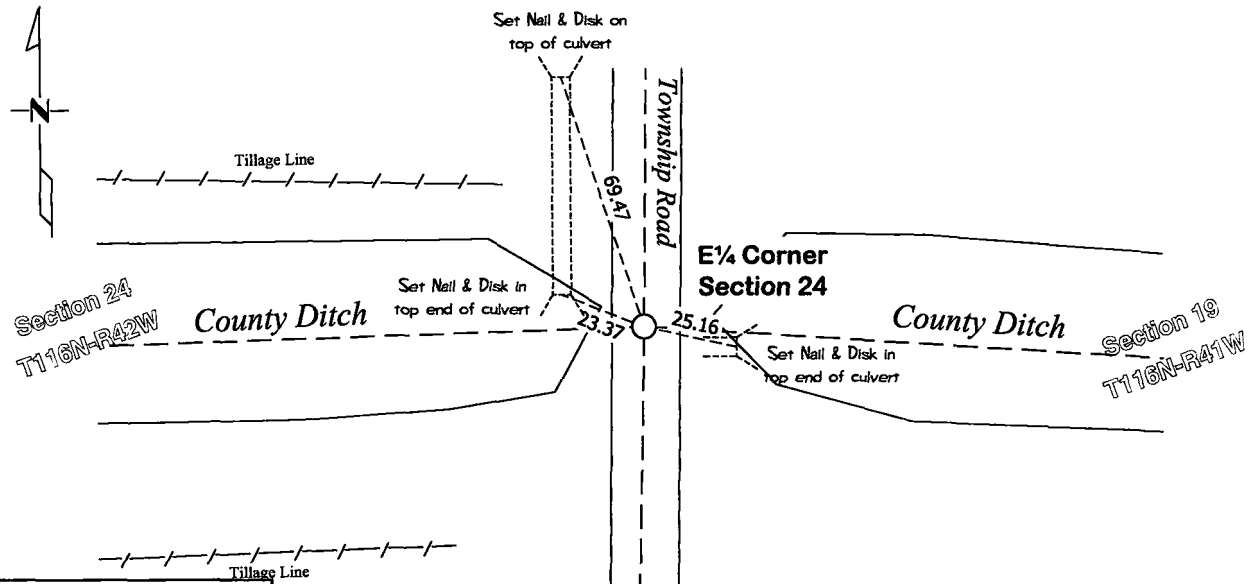
☒ On August 11, 2025 found a No Existing Monument
DATE

☐ left monument as found

☐ lowered monument

☐ removed monument (explain)

☒ On Nov. 12, 2025 placed a 5/8" x 15" Iron Rod with Plastic Cap Stamped "46169 - 46171 - 62454"
DATE



Yellow Medicine Co. 2011 adj.
N: 209424.86 (NAD 83)
E: 513439.22

Statement of evidence for this corner location is on back of this page.

I hereby certify that this survey, plan, or report was prepared by me or under my direct supervision and that I am a duly Licensed Land Surveyor under the laws of the state of Minnesota.

Signature

Leo A. Van Beck
Leo A. Van Beck, Minnesota Registered Land Surveyor #62454

Date

11-24-2025

STATEMENT OF EVIDENCE

West Quarter Corner of Section 19, T116N-R41W

- 1864** W.J. Neely was contracted by the United States Government Land Office to perform the Original Public Land Survey in this township. Records in the field notes that he “set qr sec post deposited coal made mound trench and pits as per instruction.”
- 1901** John Norgaard notes on Yellow Medicine County Survey Record Book B, Page 7, dimensions to this corner position.
- Nov. 12, 2025** Leo A. Van Beck, LS 62454, found no existing monumentation at this corner position. No large scale excavation was performed at this corner position. The position of this corner was verified by using former County Surveyor records. A 5/8” x 15” Rebar with a “46169-46171-62454” stamped plastic cap was set at the CSRB-B, Page 7 location. The coordinates of this section corner were recorded in the Minnesota Department of Transportation Yellow Medicine County Coordinate System (2011 Adjustment).