

**Property & Public Services
Property Records Division
Yellow Medicine County, Minnesota
I hereby certify that the within instrument
was filed on December 1, 2025 at 10:30 AM**

Abigail J. Fischer

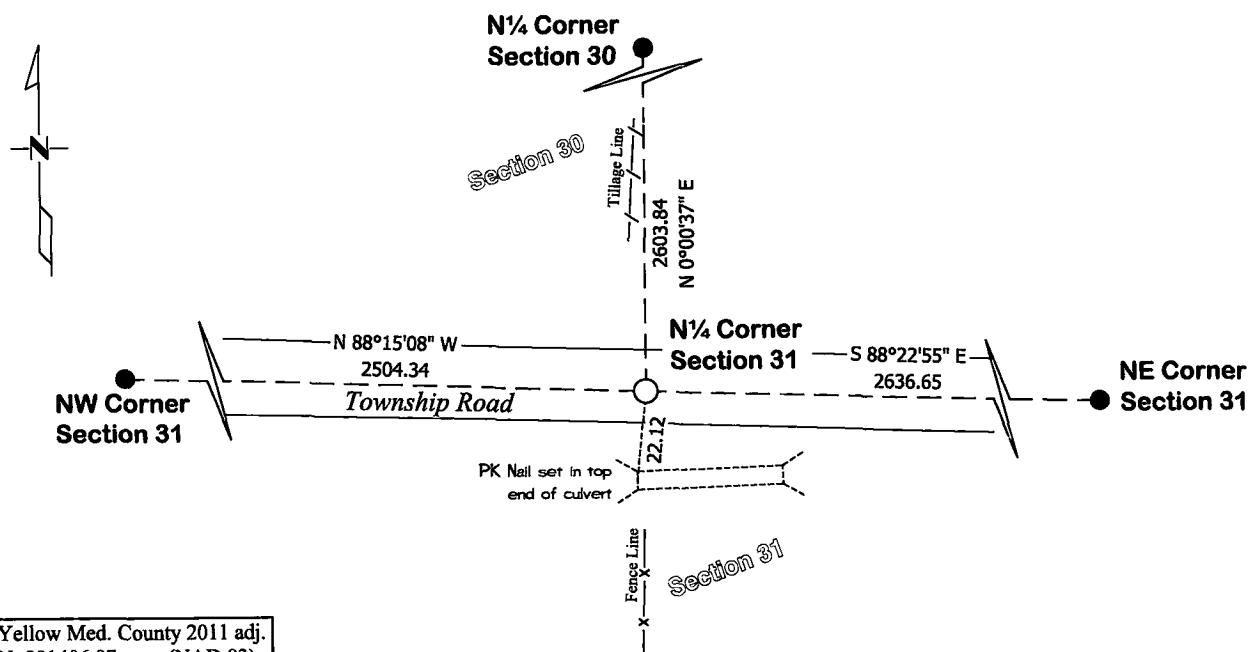
North Quarter Corner of Section **31**, Township **116**, Range **41**

Fifth Principal Meridian, State of Minnesota, County of **Yellow Medicine**

☒ On Sept. 17, 2025 found a No Existing Monument
DATE

☐ left monument as found ☐ lowered monument ☐ removed monument (explain)

☒ On Nov. 12, 2025 placed a 5/8" x 15" Iron Rod with Plastic Cap Stamped "46169 - 46171 - 62454"
DATE



Yellow Med. County 2011 adj.
N: 201406.07 (NAD 83)
E: 515809.62

Statement of evidence for this corner location is on back of this page.

I hereby certify that this survey, plan, or report was prepared by me or under my direct supervision and that I am a duly Licensed Land Surveyor under the laws of the state of Minnesota.

Signature

Leo A. Van Beck, Minnesota Registered Land Surveyor #62454

Date _____

11-24-2025

STATEMENT OF EVIDENCE

North Quarter Corner of Section 31, T116N-R41W

- 1864** CE Davis & JW Webb Jr were contracted by the United States Government Land Office to perform the Original Public Land Survey in this township. Record in the field notes "Set post in mound with pits for ¼ Section Corner."
- Nov. 12, 2025** Leo A. Van Beck, LS 62454, found no existing monumentation at this corner position. No large scale excavation was performed at this corner position. A 5/8" x 15" Rebar with a "46169-46171-62454" stamped plastic cap was set on the road centerline and in line with a remnant fence line in Section 31 which fits well with occupation lines to the north and south. The coordinates of this section corner were recorded in the Minnesota Department of Transportation Yellow Medicine County Coordinate System (2011 Adjustment).