

**Property & Public Services  
Property Records Division  
Yellow Medicine County, Minnesota  
I hereby certify that the within instrument  
was filed on December 1, 2025 at 10:30 AM**

**Janel Timm, Yellow Medicine County Recorder**

Abigail L. Fischer

# CERTIFICATE OF LOCATION OF GOVERNMENT CORNER

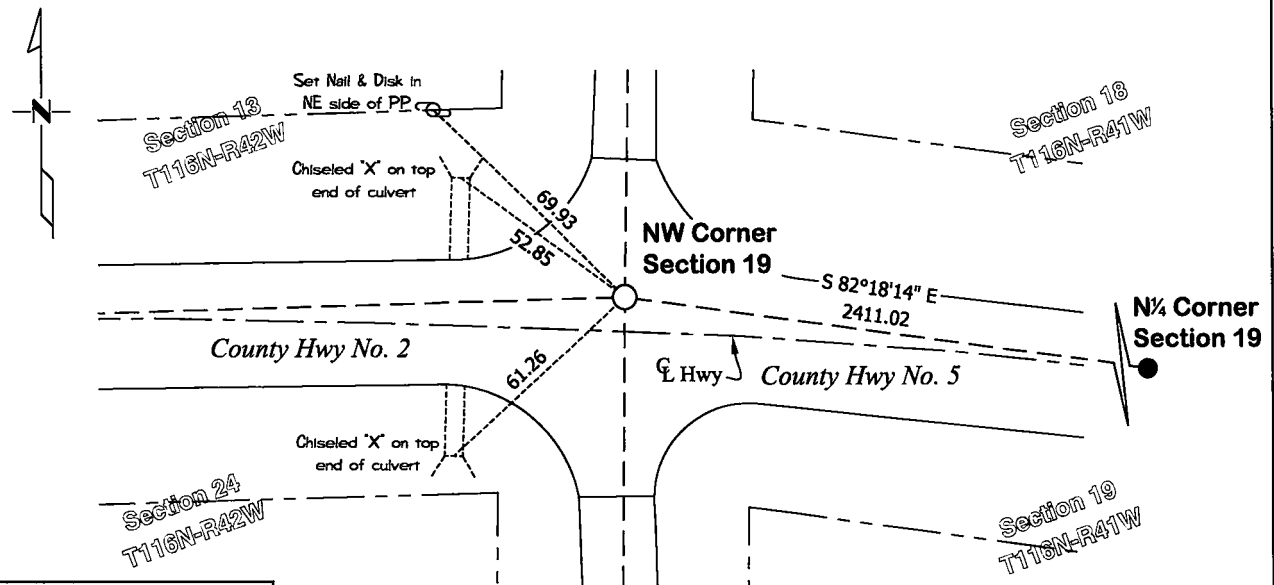
**Northwest** Corner of Section **19**, Township **116**, Range **41**  
**Fifth** Principal Meridian, State of Minnesota, County of **Yellow Medicine**

**At the corner location shown on the sketch:**

☒ On August 11, 2025 found a No Existing Monument  
DATE

☐ left monument as found      ☐ lowered monument      ☐ removed monument (explain)

☒ On Nov. 12, 2025 placed a 5/8" x 15" Iron Rod with Plastic Cap Stamped "46169 - 46171 - 62454"  
DATE



Yellow Medicine Co. 2011 adj.  
N: 212073.57 (NAD 83)  
E: 513464.92

Statement of evidence for this corner location is on back of this page.

I hereby certify that this survey, plan, or report was prepared by me or under my direct supervision and that I am a duly Licensed Land Surveyor under the laws of the state of Minnesota.

**Signature**

LAND SURVEYOR

Date \_\_\_\_\_

11-24-2025

Leo A. Van Beck, Minnesota Registered Land Surveyor #62454

# ***STATEMENT OF EVIDENCE***

---

## ***Northwest Corner of Section 19, T116N-R41W***

- 1858** W. J. Neely was contracted by the United States Government Land Office to perform the Original Public Land Survey in this township. Records in the field notes that he "Set post corner to sect. 13, 18, 19 and 24 deposited coal made mound trench and pits as per instruction."
- May 1921** Yellow Medicine County Survey Record Book A, Page 446, notes "Found" at this corner and dimensions to this corner position.
- 1967** Lac Qui Parle County Highway Engineer Road Plans for County Road No. 2, notes this section corner at Sta 158+50.2 and records 2 section corner witness ties at this corner position.
- Feb. 24, 2010** Yellow Medicine County Highway Engineer Road Plans SAP 87-605-12, Sheet 4 for County Road No. 5, notes "ASSUMED SECTION CORNER" at this corner position.
- Nov. 12, 2025** Leo A. Van Beck, LS 62454, found no existing monumentation at this corner position. No large scale excavation was performed at this corner position. The position of this corner was verified by using former County Surveyor records, surveys, and highway maps. A 5/8" x 15" Rebar with a "46169-46171-62454" stamped plastic was set at the location of the former section corner. The coordinates of this section corner were recorded in the Minnesota Department of Transportation Yellow Medicine County Coordinate System (2011 Adjustment).