

Property & Public Services

Property Records Division

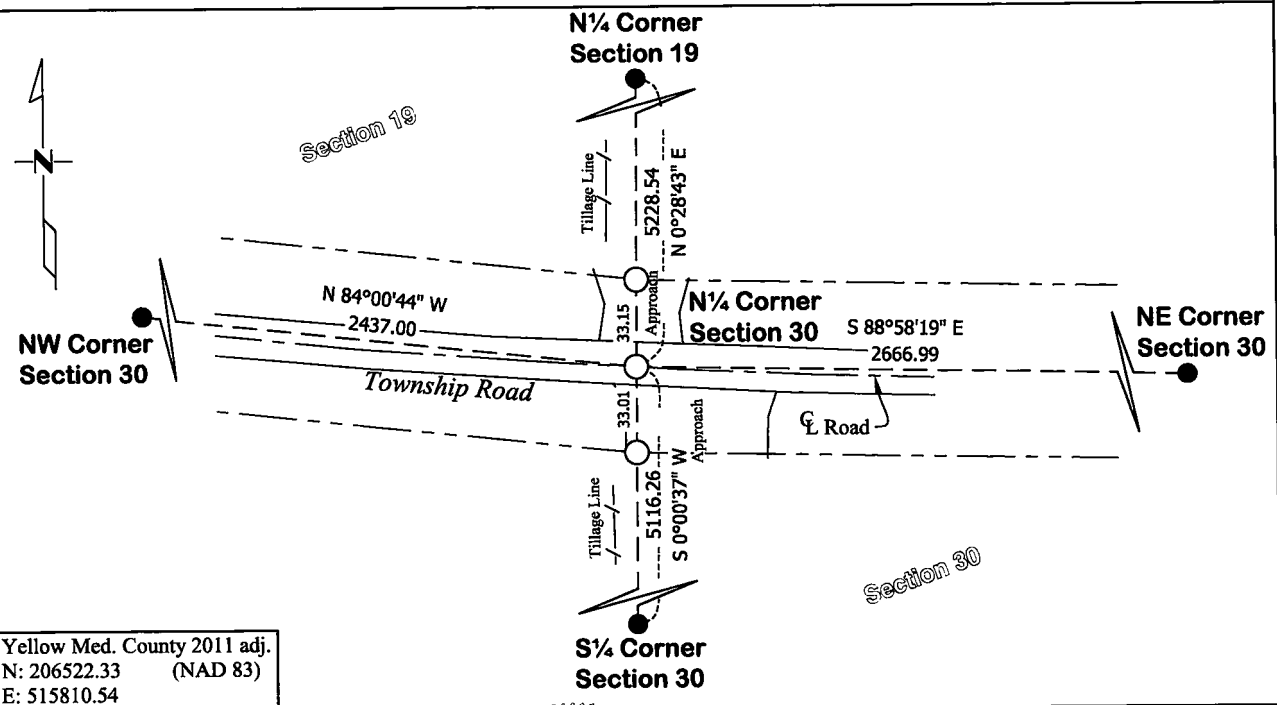
Yellow Medicine County, Minnesota

I hereby certify that the within instrument
was filed on December 1, 2025 at 10:30 AM

Janel Timm, Yellow Medicine County Recorder

Alvin L. Fischer**CERTIFICATE OF LOCATION OF GOVERNMENT CORNER****North Quarter**Corner of Section **30**, Township **116**, Range **41****Fifth**Principal Meridian, State of Minnesota, County of **Yellow Medicine**

At the corner location shown on the sketch:

☒ On August 11, 2025 found a No Existing Monument
DATE☐ left monument as found☐ lowered monument☐ removed monument (explain)☒ On Nov. 12, 2025 placed a 5/8" x 15" Iron Rod with Plastic Cap Stamped "46169 - 46171 - 62454"
DATE

Statement of evidence for this corner location is on back of this page.

I hereby certify that this survey, plan, or report was prepared by me or under my direct supervision and that I am a duly Licensed Land Surveyor under the laws of the State of Minnesota.

Signature

Leo A. Van Beck, Minnesota Registered Land Surveyor #62454

Date

11-24-2025

STATEMENT OF EVIDENCE

North Quarter Corner of Section 30, T116N-R41W

- 1864** CE Davis & JW Webb Jr were contracted by the United States Government Land Office to perform the Original Public Land Survey in this township. Webb and Davis record in their field notes that they "Set post in mound with pits for $\frac{1}{4}$ Section Corner."
- 1901** John Norgaard notes on County Survey Record Book B, Page 7, dimensions to this corner position.
- 1921** John Norgaard notes on County Survey Record Book A, Page 446, dimensions to this corner position.
- Nov. 12, 2025** Leo A. Van Beck, LS 62454, found no existing monumentation at this corner position. No large scale excavation was performed at this corner position. The position of this corner was verified by using former County Surveyor records. A 5/8" x 15" Rebar with a "46169-46171-62454" stamped plastic was set on the road centerline and at the CSRB A, Page 446 distance from the northwest corner of Section 30. The coordinates of this section corner were recorded in the Minnesota Department of Transportation Yellow County Coordinate System (2011 Adjustment).