

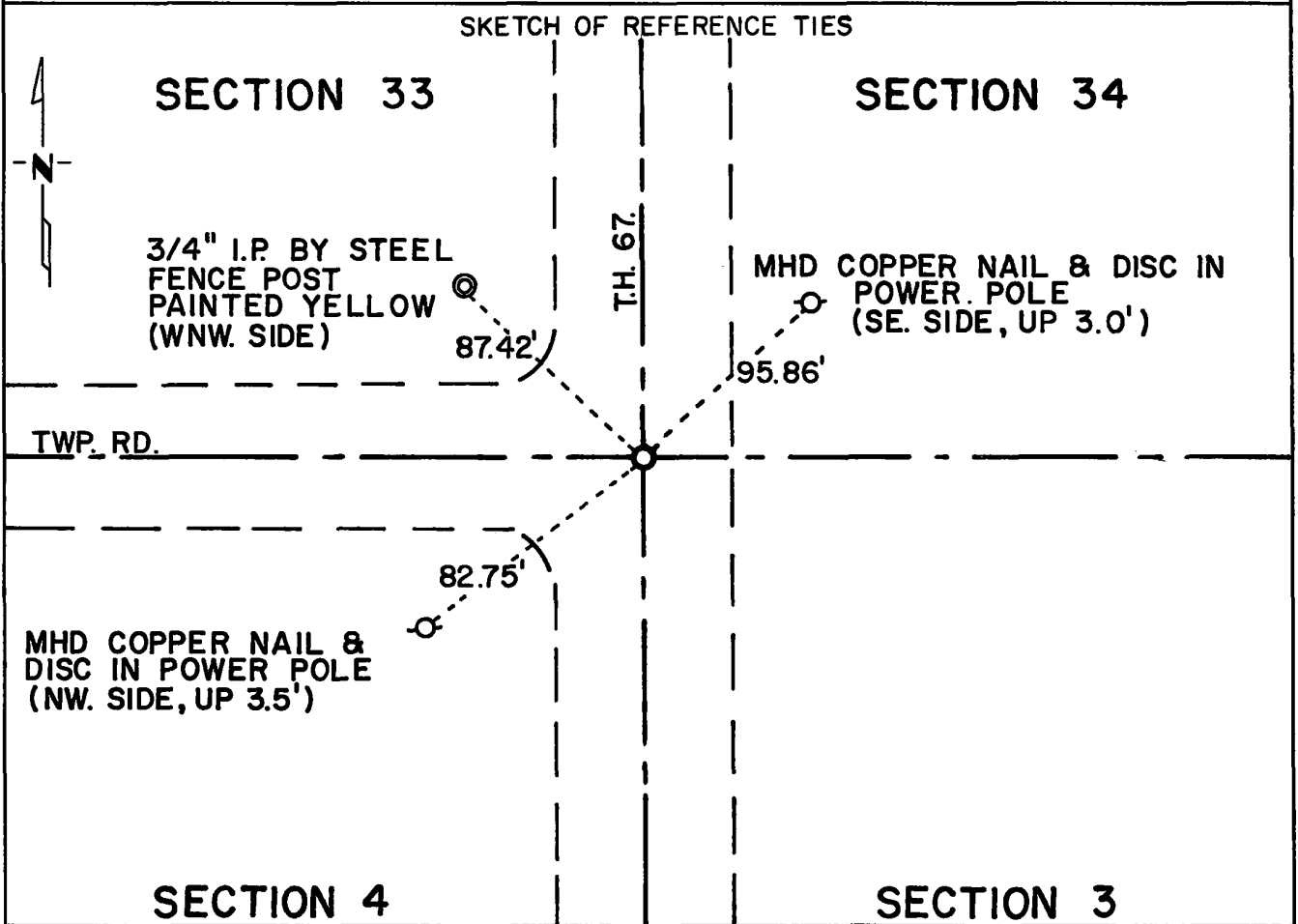
# CERTIFICATE OF LOCATION OF GOVERNMENT CORNER

Northeast Corner of Section 4, Township 113N, Range 38W, 5th P.M.

STATE OF MINNESOTA, County of Yellow Medicine

At the corner location shown on the sketch:

- On May 6, 1975 found a 2x2 hub over a 6"x6"x24" Jasper stone on centerline  
DATE  
of T.H. 67 and Twp. Rd. E-W, down 4'.
  - left monument as found,  lowered monument,  removed monument (explain)
- On Dec. 5, 1975 placed a Minnesota Highway Department cast iron monument  
DATE  
down 1 inch below road surface.



Statement of evidence relative to this corner location is on back of page.

I hereby certify that this document and the data contained herein was prepared by me or under my direct supervision.

Richard M. Koskymaki 3/9/76  
SIGNATURE DATE

Registration No. 11526

- Land Surveyor,  Professional Engineer
- County Surveyor,  County Engineer

OFFICE OF THE REGISTER OF DEEDS  
 County of Yellow Medicine

RECORDED  
 GRANTOR  
 GRANTEE  
 INDEX

I hereby certify that this document was filed in the Reg. of Deeds office at 7:20 A.M. on the 18 day of March A.D., 19 76

Register of Deeds Norman J. Opdahl

By Kay Nordahl, Deputy

DOCUMENT NO. 166659

Statement of Evidence: Northeast Corner Section 4, Township 113N, Range 38W.

The original Public Land Survey for township lines was run in 1858 and a charred stake set in a mound with pits to mark the corner.

In 1891, Jonah Peterman found the original mound and set a stake to mark the corner.

In 1901, John Norgaard found the stone and placed a jasper monument to mark the corner.

In 1941, the MHD found a wood stake with no mention of finding a stone monument.

On May 6, 1975, the Minnesota Highway Department found a 6"x6"x24" jasper monument with wood stake above it to mark the corner.

An analysis of the record data indicates that the jasper monument is in the accepted location of the Public Land Survey corner.

72  
BOOK  
37

Index No. \_\_\_\_\_

# CERTIFICATE OF LOCATION OF GOVERNMENT CORNER

Northeast \_\_\_\_\_ Corner of Section 6, Township 113, Range 38, 5th P.M.

STATE OF MINNESOTA, County of Yellow Medicine

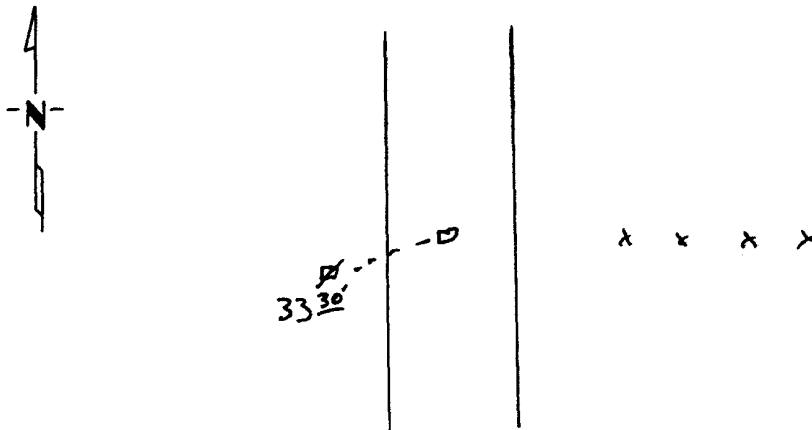
At the corner location shown on the sketch:

On \_\_\_\_\_ found a \_\_\_\_\_  
DATE

left monument as found,  lowered monument,  removed monument (explain)

On Apr. 14, 1993 placed a 1" iron pipe w/seal#11943 (see back)  
DATE

## SKETCH OF REFERENCE TIES



Nail & seal in power pole SSW 33.30'

Statement of evidence relative to this corner location is on back of page.

I hereby certify that this document and the data contained herein was prepared by me or under my direct supervision.

Sylvia C. Mosny 4-10-95  
SIGNATURE DATE

Registration No. 11943  
 Land Surveyor,  Professional Engineer  
 County Surveyor,  County Engineer

## OFFICE OF THE COUNTY RECORDER

County of Yellow Medicine

I hereby certify that this document was filed in the Co. Recorders office at 9:55 A.M. on the 30 day of June A.D., 19 95

County Recorder Normand Gustafson

By \_\_\_\_\_, Deputy

DOCUMENT NO. 209406

**Statement of Evidence:**

On April 14, 1993, we dug with a back hoe in line with fence to the east and in the center line of the road and found nothing. I set the corner in the center of the road and 33' east of power pole, and also in line with fence to the west.

Corners to be Indexed

N1/4 7-113-38

Doc# 272032 Fee: \$0.00 2 Pages

Property & Public Services  
Property Records Division  
Yellow Medicine County, Minnesota

I hereby certify that the within instrument  
was filed on December 17, 2019 at 11:05 AM

I hereby certify that this document and the data  
contained herein was prepared by me or under  
my direct supervision.

Janel Timm, Yellow Medicine County Recorder

By Kelly Kruger Deputy

Jerry G. Johnson Date 8/27/2019  
License No. 50343

### CERTIFICATE OF LOCATION OF GOVERNMENT CORNER

Land survey monuments situated in Section 7, Township 113, Range 38, 5TH P.M.

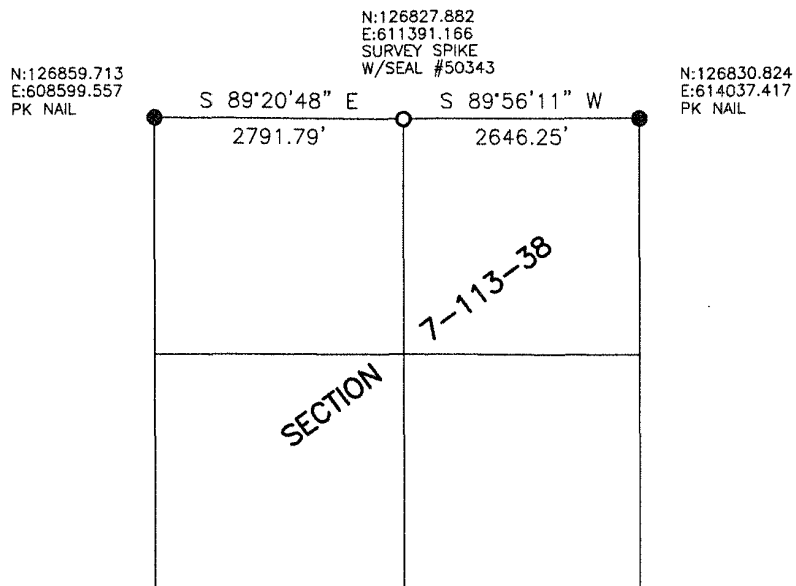
STATE OF MINNESOTA, County of YELLOW MEDICINE

#### STATEMENT OF EVIDENCE:

1864 - Original government survey.



- FOUND MONUMENT
- SET MONUMENT



Minnesota State Plane Coordinate  
System Yellow Medicine County Datum NAD83 (1996)

Statement of Evidence

N1/4 7-113-38

In 1864, C.E. Davis and J.W. Webb, Jr. did the original subdivision of the township.

On May 6, 2019, we set a survey spike with seal #50343 proportionate distances between the section corners and in the center of the road. It is 17'± south of line between the section corners and in line with the fences to the north and south.

# CERTIFICATE OF LOCATION OF GOVERNMENT CORNER

East Quarter Corner of Section 10, Township 113, Range 38, 5th P.M.

STATE OF MINNESOTA, County of Yellow Medicine

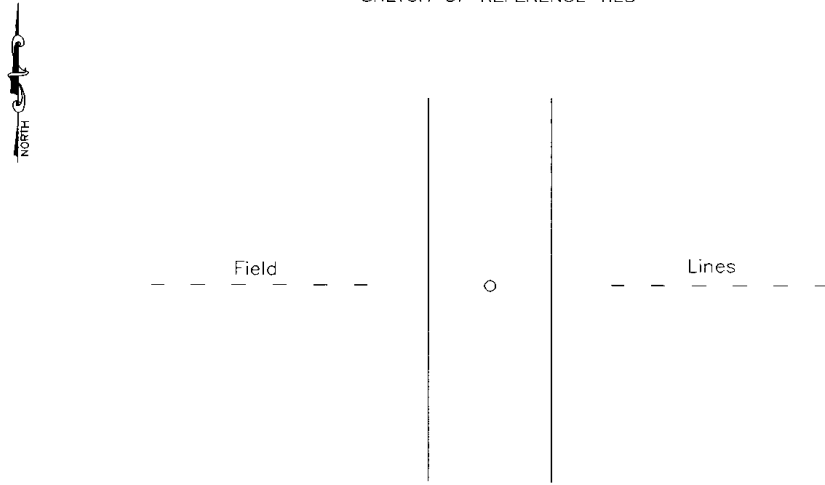
At the corner location shown on the sketch:

On 8-20-1996 found a 2" iron pipe below the road surface with a wooden stake along  
DATE  
side of it

left monument as found,  lowered monument,  removed monument (explain)

On 8-20-1996 placed a 5/8" rerod with a seal #11943 in the pipe.  
DATE

### SKETCH OF REFERENCE TIES



Statement of evidence relative to this corner location is on back of page.

I hereby certify that this document and the data contained herein was prepared by me or under my direct supervision.

Lyle C. Moring 1-14-06  
SIGNATURE DATE

Registration No. 11943  
 Land Surveyor,  Professional Engineer  
 County Surveyor,  County Engineer

### OFFICE OF THE COUNTY RECORDER

County of \_\_\_\_\_  
I hereby certify that this document was filed in the Co. Recorders office at \_\_\_\_\_ M on the \_\_\_\_\_ day of \_\_\_\_\_ A.D. 19 \_\_\_\_\_

County Recorder \_\_\_\_\_  
By \_\_\_\_\_, Deputy  
DOCUMENT NO. \_\_\_\_\_

Statement of Evidence

In 1864, C. E. Davis and J. W. Webb, Jr. did the original subdivision of the township.

On August 20, 1996 Moseng Land Surveying found a 2" iron pipe below the road surface with a wooden stake along side of it. I placed a 5/8" rerod with a seal in the pipe. It is in line with the field lines east and west.

Doc# 240408 Fee: \$ 2 Pages

Office of County Recorder  
Yellow Medicine County, Minnesota  
I hereby certify that the within Instrument  
was filed on April 12, 2006 at 10:00 AM

Kay Zempel, Yellow Medicine County Recorder

BY Jail Rohlik Deputy

**N/C**  
**Bueltel-Moseng Land Surveying**  
**P.O. Box 32**  
**Marshall, MN 56258**

# CERTIFICATE OF LOCATION OF GOVERNMENT CORNER

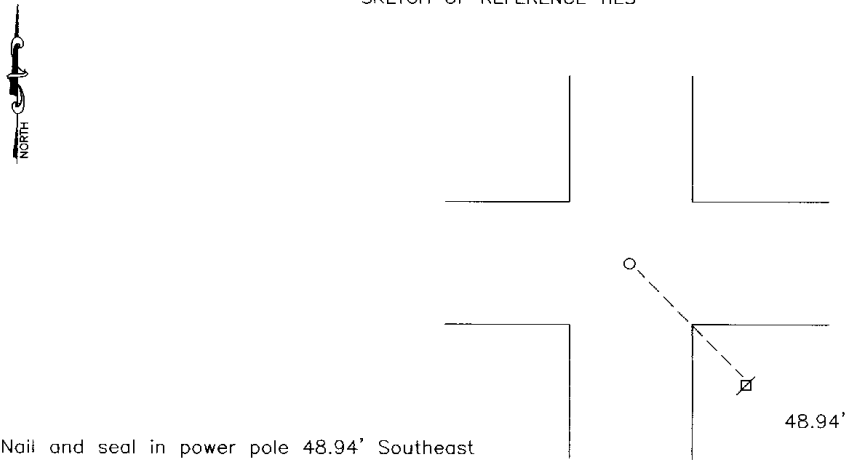
Northeast Corner of Section 15, Township 113, Range 38, 5th P.M.

STATE OF MINNESOTA, County of Yellow Medicine

At the corner location shown on the sketch:

- On 8-20-1996 found a 6x6" square cut stone with wooden along the west side.  
DATE  
Also a 1 1/2" Iron pipe with a 3/4" rerod inside of it. on top of stone.  
 left monument as found,  lowered monument,  removed monument (explain)
- On 8-20-1996 placed a seal #11943 on the existing rerod.  
DATE

### SKETCH OF REFERENCE TIES



Statement of evidence relative to this corner location is on back of page.

I hereby certify that this document and the data contained herein was prepared by me or under my direct supervision.

Lyle C. Young 1-16-06  
SIGNATURE DATE

Registration No. 11943  
 Land Surveyor,  Professional Engineer  
 County Surveyor,  County Engineer

OFFICE OF THE COUNTY RECORDER  
 County of \_\_\_\_\_  
 I hereby certify that this document was filed in the Co. Recorders office at \_\_\_\_\_ M on the \_\_\_\_\_ day of \_\_\_\_\_ A.D. 19 \_\_\_\_  
 County Recorder \_\_\_\_\_  
 By \_\_\_\_\_, Deputy  
 DOCUMENT NO. \_\_\_\_\_

Statement of Evidence

In 1864, C. E. Davis and J. W. Webb, Jr. did the original subdivision of the township.

On August 20, 1996 Moseng Land Surveying found a 6x6" square cut stone with a wooden stake along the west side. A 1 1/4" iron pipe was also discovered with a 3/4" rerod inside of it. The pipe was on top of the stone. Moseng Land Surveying placed a seal #11943 on the existing rerod.

Doc# 240407 Fee: \$ 2 Pages

Office of County Recorder  
Yellow Medicine County, Minnesota  
I hereby certify that the within instrument  
was filed on April 12, 2006 at 09:55 AM

Kay Zempel, Yellow Medicine County Recorder

BY *Gail Rohlik* Deputy

**N/C**  
**Bueltel-Moseng Land Surveying**  
**P.O. Box 32**  
**Marshall, MN 56258**

# CERTIFICATE OF LOCATION OF GOVERNMENT CORNER

1/4 Corner to Sec. 16 & 21 T. 113 N R. 38 W No.

State of Minnesota, }  
County of Yellow Medicine } ss.

I hereby certify that on the 31 st day of August 1967  
I ~~know~~ set the 1/4 corner of Sections 16 & 21, T 113 N, R 38 W  
which was evidenced by its location at distance of 2644 feet from the section  
corners common to Sections 16 & 21

and I further certify that to perpetuate the location of such corner, I did, at the exact location thereof, place  
a permanent marker consisting of a State Hwy. Dept. 20" x 6" x 4" cast iron monument

I further certify that I established 3  
reference or witness monuments consisting of

which reference or witness monuments are located in the manner following:

- Cap in fence post N. N. E. 31.0
- Cap in power pole N. E. 226.5
- Cap in power pole N. W. 103.9

Monument sets 2.5 feet west of fence line north with top 6" below  
road surface.

Dated at Granite Falls, Minn., this 15th day of November 1967

Arbie E. Nelson  
~~County~~ Surveyor ~~of~~ ~~Yellow~~ ~~Medicine~~ ~~County~~  
Arbie E. Nelson Reg. # 1483

OFFICE OF REGISTER OF DEEDS

County of Yellow Medicine

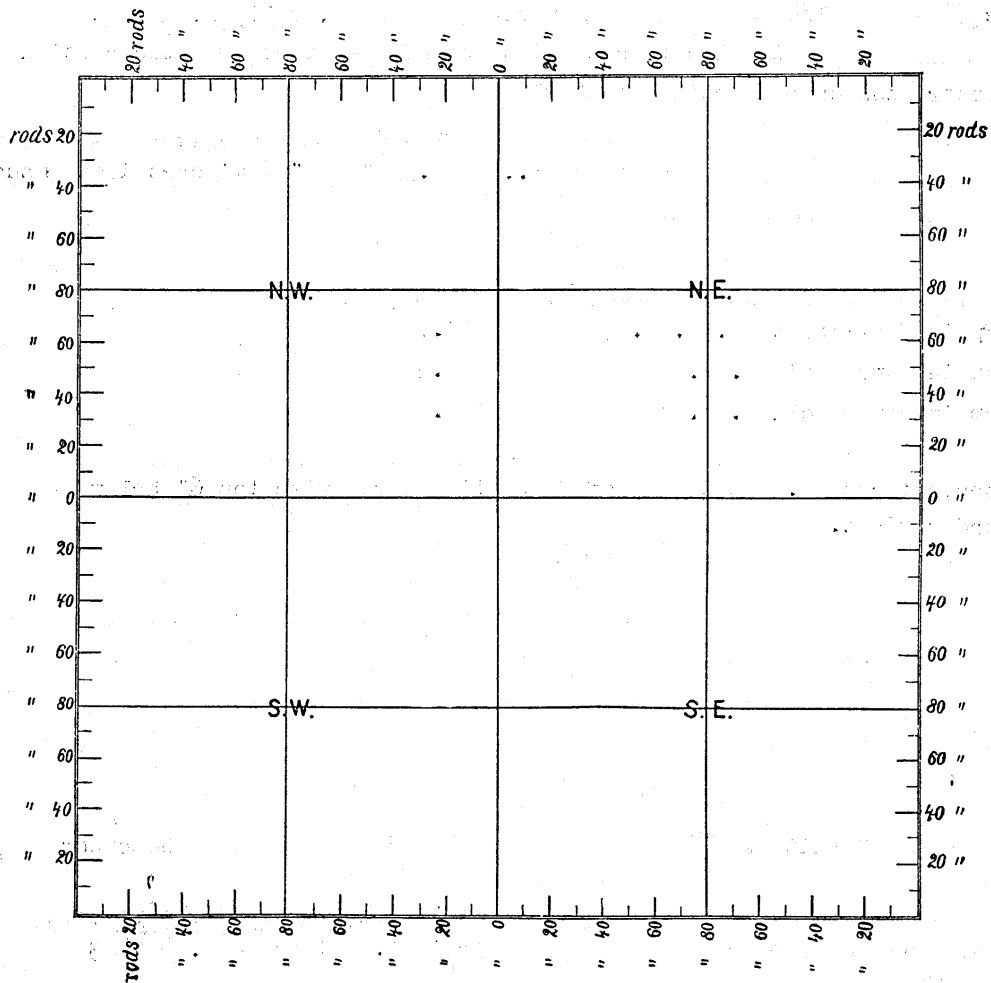
I hereby certify that the within instrument was filed in this office for record on the 30  
day of November A. D. 1967 at 10:10 o'clock A. M.

153291

S.A. Haugland  
S.A. Haugland Register of Deeds

By Deputy

SECTION \_\_\_\_\_ TOWNSHIP \_\_\_\_\_ RANGE \_\_\_\_\_ P.M.



# CERTIFICATE OF LOCATION OF GOVERNMENT CORNER

EAST QUARTER Corner of Section 18, Township 113, Range 38, 5TH P.M.

STATE OF MINNESOTA, County of YELLOW MEDICINE

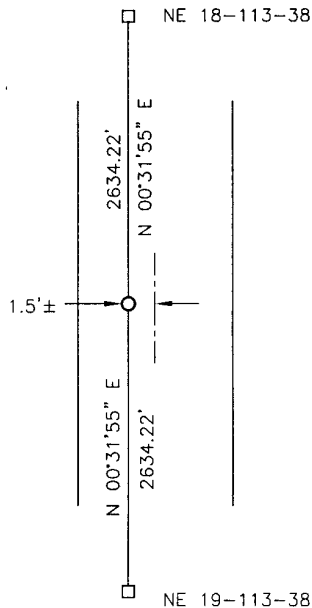
At the corner location shown on the sketch:

On \_\_\_\_\_ found a \_\_\_\_\_  
DATE

left monument as found,  lowered monument,  removed monument (explain)

On 08-16-2017 placed a 5/8" IRON WITH SEAL #50343.  
DATE

### SKETCH OF REFERENCE TIES



Minnesota State Plane Coordinate  
System Yellow Medicine County Datum  
NAD83 (1996)

N: 118928.028  
E: 614122.506

Statement of evidence relative to this corner location is on back of page.

I hereby certify that this document and the data contained herein was prepared by me or under my direct supervision.

[Signature] 3/12/2018  
SIGNATURE DATE

Registration No. 50343

Land Surveyor,  Professional Engineer  
 County Surveyor,  County Engineer

**Doc# 268085 Fee: \$0.00 2 Pages**

Property & Public Services  
Property Records Division  
Yellow Medicine County, Minnesota  
I hereby certify that the within instrument was filed on March 28, 2018 at 9:30 AM

Janel Timm, Yellow Medicine County Recorder

By Kelly Kueger Deputy

## Statement of Evidence

In 1864, Chas E. Davis and J.W. Webb, Jr. did the original subdivision of the township.

On August 16, 2017, Bueltel-Moseng Land Surveying set a 5/8" iron with seal #50343 midway and on line between the section corners.

# CERTIFICATE OF LOCATION OF GOVERNMENT CORNER

NORTHEAST Corner of Section 19, Township 113, Range 38, 5TH P.M.

STATE OF MINNESOTA, County of YELLOW MEDICINE

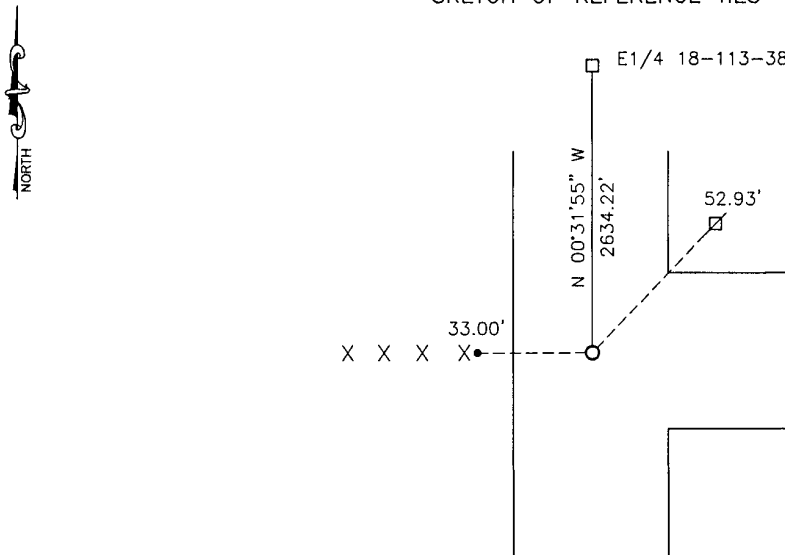
At the corner location shown on the sketch:

On 08-16-2017 found a STONE.  
DATE

left monument as found,  lowered monument,  removed monument (explain)

On 08-16-2017 placed a 5/8" IRON WITH SEAL #50343 OVER STONE.  
DATE

### SKETCH OF REFERENCE TIES



Minnesota State Plane Coordinate  
 System Yellow Medicine County Datum  
 NAD83 (1996)  
 N: 116293.917  
 E: 614146.965

Nail and bottle cap in utility pole NE 52.93'  
 5/8" iron with seal #50343 West 33.00'

Statement of evidence relative to this corner location is on back of page.

I hereby certify that this document and the data contained herein was prepared by me or under my direct supervision.

*[Signature]* 3/12/2018  
SIGNATURE DATE

Registration No. 50343

Land Surveyor,  Professional Engineer  
 County Surveyor,  County Engineer

**Doc# 268086 Fee: \$0.00 2 Pages**

Property & Public Services  
 Property Records Division  
 Yellow Medicine County, Minnesota  
 I hereby certify that the within instrument was filed on March 28, 2018 at 9:35 AM

Janel Timm, Yellow Medicine County Recorder

By *[Signature]* Deputy

## Statement of Evidence

In 1864, Chas E. Davis and J.W. Webb, Jr. did the original subdivision of the township.

On August 16, 2017, Bueltel-Moseng Land Surveying found a bridge spike. We removed the spike and found a stone below it. We set a 5/8" iron with seal #50343 over the stone.

# CERTIFICATE OF LOCATION OF GOVERNMENT CORNER

1/4 Corner to Sec. 22 & 27 T. 113 N R. 38 W No. \_\_\_\_\_

State of Minnesota }  
County of Yellow Medicine } ss.

I hereby certify that on the 31 st day of August 67  
set 19

found the 1/4 corner of Sections 22 & 27, T 113 N, R 38 W

which was evidenced by its location at distance of 2618.8 from Section  
corners common to Sections 22 & 27

and I further certify that to perpetuate the location of such corner, I did, at the exact location thereof, place  
a permanent marker consisting of a State Hwy. Dept. 20" x 6" x 4" cast iron monume  
nt

I further certify that I established 3  
reference or witness monuments consisting of

which reference or witness monuments are located in the manner following:

- Cap in Cottonwood tree S. W. 92.0
- Cap in power Pole S. E. 94.8
- Cap in fence post N. E. 36.7

Set monument 2.8 feet east of fence line north with top 6" below road  
surface.

Dated at Granite Falls, Minn., this 15 th day of November 67 19

Arbie E. Nelson  
County Surveyor of Yellow Medicine  
Arbie E. Nelson Reg. # 1483

OFFICE OF REGISTER OF DEEDS }

County of Yellow Medicine }

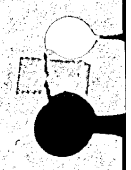
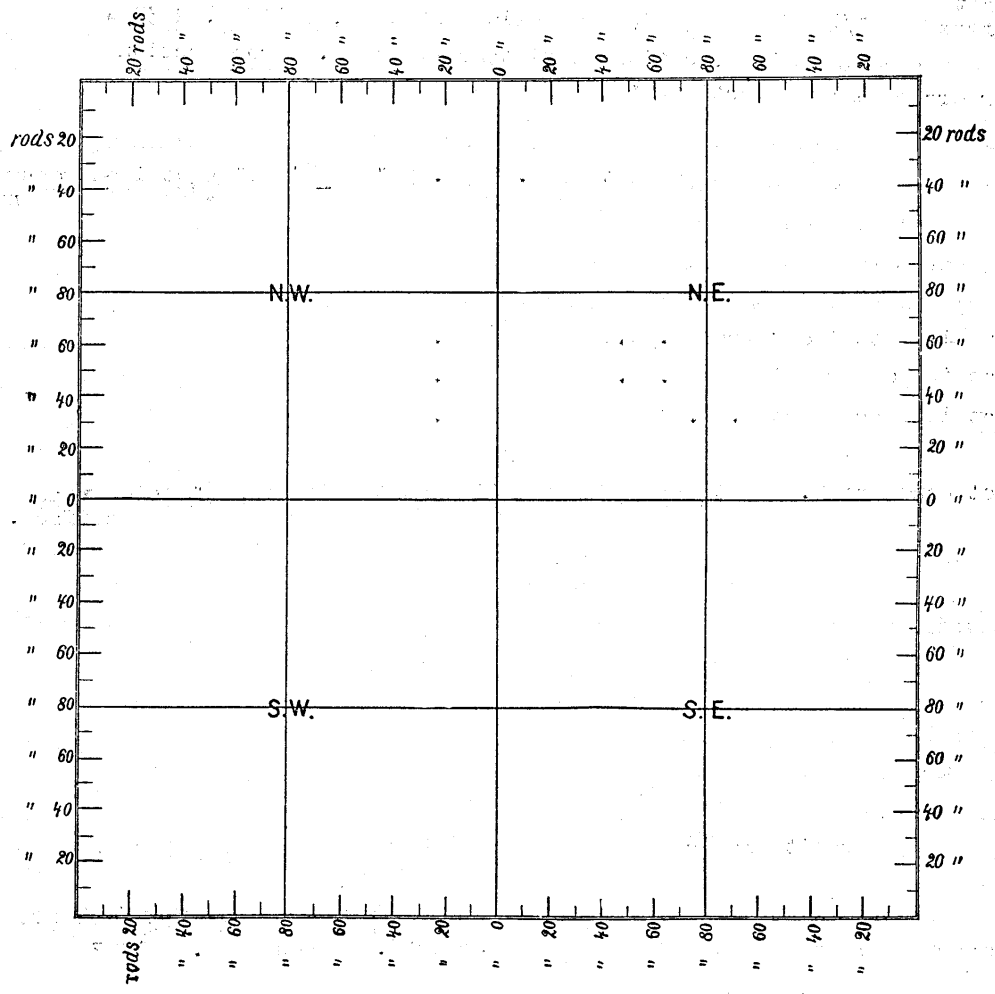
I hereby certify that the within instrument was filed in this office for record on the 30  
day of November A. D. 19 67 at 10:20 o'clock A. M.

153292

S.A. Haugland  
S.A. Haugland Register of Deeds

By \_\_\_\_\_ Deputy

SECTION \_\_\_\_\_ TOWNSHIP \_\_\_\_\_ RANGE \_\_\_\_\_ P.M.



# CERTIFICATE OF LOCATION OF GOVERNMENT CORNER

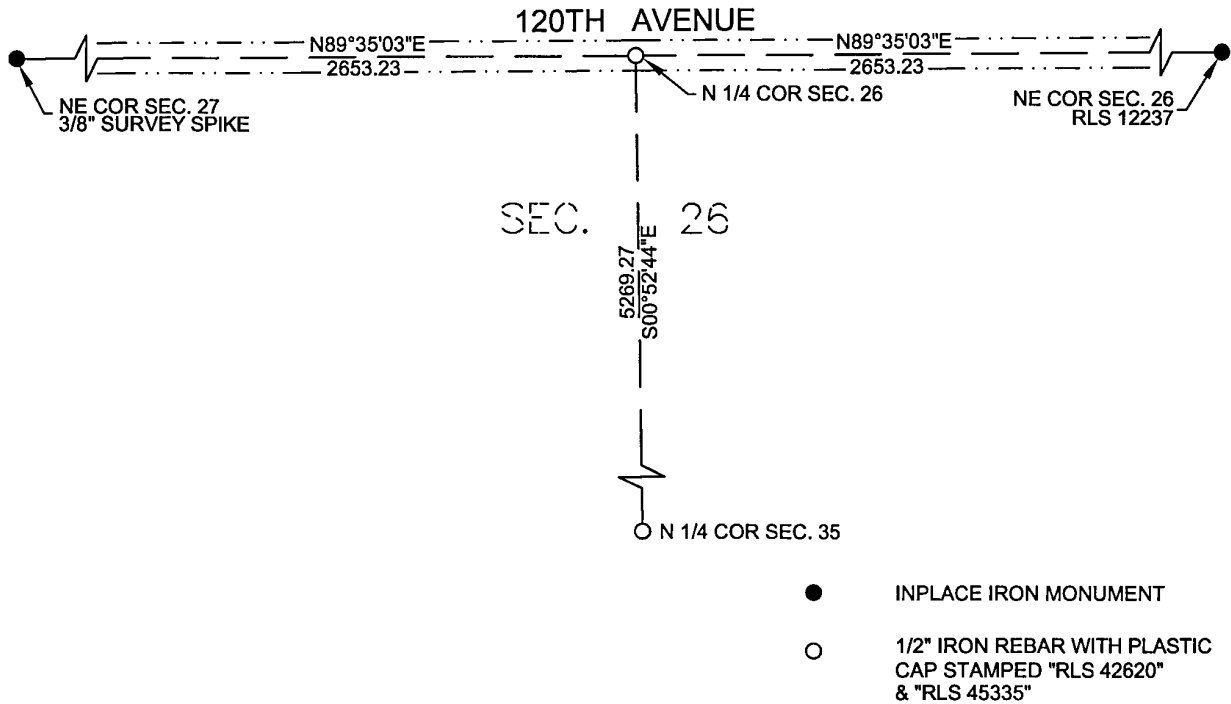
N 1/4 Corner of Section 26 , Township 113 North, Range 38 West of the 5th P.M. State of Minnesota, County of Yellow Medicine .

At the corner location shown on the sketch:

On \_\_\_\_\_ found a \_\_\_\_\_

On 1/23/2019 placed a 1/2" x 18" iron rebar with a plastic cap stamped "RLS 42620 & RLS 45335".

## SKETCH OF REFERENCE TIES



I hereby certify that this survey, plan, report was prepared by me or under my direct supervision and that I am a duly Registered Land Surveyor under the laws of the State of Minnesota.

*Eric G. Nyberg*

---

Eric G. Nyberg

Date January 31st, 2019 License No. 45335

Doc# 270399 Fee: \$0.00 2 Pages

Property & Public Services  
Property Records Division  
Yellow Medicine County, Minnesota  
I hereby certify that the within instrument was filed on March 18, 2019 at 9:40 AM

Janel Timm, Yellow Medicine County Recorder

By *Kelly Kauger* Deputy

Statement of evidence for this corner position is on the back of this page

(FILE NO. 9986)

## STATEMENT OF EVIDENCE

North Quarter Corner of Section 26, Township 113 North, Range 38 West, Yellow Medicine County, Minnesota.

- 1864 The U.S. General Land Office field notes, on file in the MN Secretary of State's Office, describe this original corner as a oak post in mound with trench & pit for 1/4 section corner.
- 2019 Nyberg Surveying did not find any evidence of the original section corner at this location. No evident occupation in a north, south, east or west direction was evident at this location. The corner was considered to be lost and was reestablished by single proportionate measurement using the Northeast Corner of Section 27 and the Northeast Corner of Section 26. The position was found to measure 2653.23 feet from the adjoining section corners. The corner lies approximately 4 feet north of the centerline of 120th Avenue.
- 2019 A 1/2" iron rebar stamped "RLS 42650 & RLS 45335" was set at this location and its position was accepted as the North Quarter Corner of Section 26.

# CERTIFICATE OF LOCATION OF GOVERNMENT CORNER

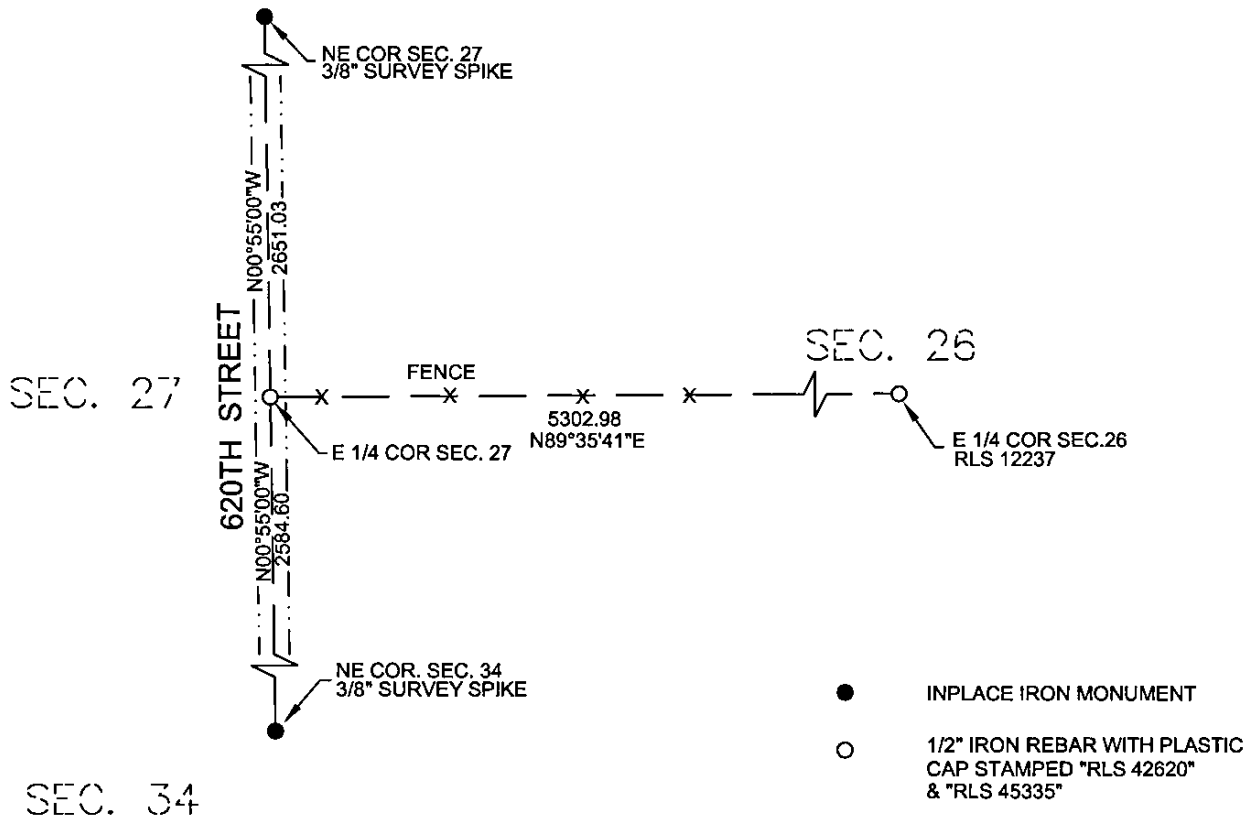
E 1/4 Corner of Section 27 , Township 113 North, Range 38 West of the 5th P.M. State of Minnesota, County of Yellow Medicine .

At the corner location shown on the sketch:

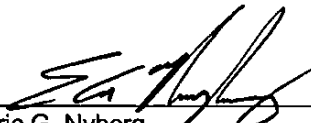
On \_\_\_\_\_ found a \_\_\_\_\_

On 1/23/2019 placed a 1/2" x 18" iron rebar with a plastic cap stamped "RLS 42620 & RLS 45335".

## SKETCH OF REFERENCE TIES



I hereby certify that this survey, plan, report was prepared by me or under my direct supervision and that I am a duly Registered Land Surveyor under the laws of the State of Minnesota.

  
Eric G. Nyberg

Date January 31st, 2019 License No. 45335

Doc# 270397 Fee: \$0.00 2 Pages

Property & Public Services  
Property Records Division  
Yellow Medicine County, Minnesota  
I hereby certify that the within instrument was filed on March 18, 2019 at 9:30 AM

Janel Timm, Yellow Medicine County Recorder

By  Deputy

Statement of evidence for this corner position is on the back of this page

(FILE NO. 9986)

## STATEMENT OF EVIDENCE

East Quarter Corner of Section 27, Township 113 North, Range 38 West, Yellow Medicine County, Minnesota.

- 1864 The U.S. General Land Office field notes, on file in the MN Secretary of State's Office, describe this original corner as a oak post in mound with trench & pit for 1/4 section corner.
- 2019 Nyberg Surveying did not find any evidence of the original section corner at this location. A fence line running east towards the east Quarter corner of section 26 was located. The corner was reestablished at the intersection of a straight line between the Northeast corner of Section 27 and the Northeast corner of Section 34 and the fence line running east. The position was found to measure 2651.03 feet from the Northeast corner of Section 27 and 2584.60 from the Northeast corner of Section 34. The corner lies on the centerline of 620th Street.
- 2019 A 1/2" iron rebar stamped "RLS 42650 & RLS 45335" was set at this location and its position was accepted as the East Quarter Corner of Section 27.

# CERTIFICATE OF LOCATION OF GOVERNMENT CORNER

NORTHEAST of Section 30, Township 113, Range 38, 5TH P.M.

STATE OF MINNESOTA, County of YELLOW MEDICINE

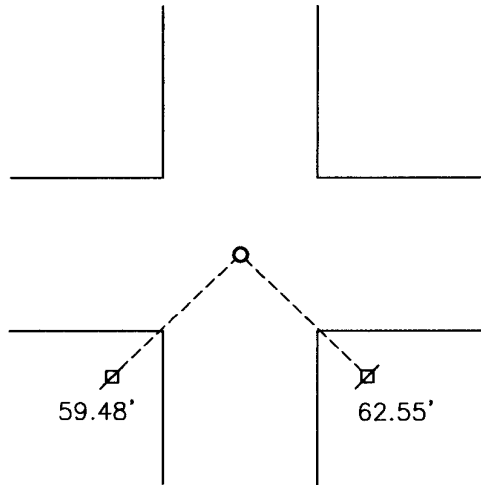
At the corner location shown on the sketch:

On 10-09-2009 found a STONE  
DATE

left monument as found,  lowered monument,  removed monument (explain)

On 10-09-2009 placed a 1" PIPE WITH SEAL #43844  
DATE

### SKETCH OF REFERENCE TIES



Minnesota State Plane Coordinate  
System Yellow Medicine County Datum  
NAD83 (1996)

N: 110965.882  
E: 614188.442

Nail and survey marker in power pole SW 59.48'  
Nail and survey marker in power pole SE 62.55'

Statement of evidence relative to this corner location is on back of page.

I hereby certify that this document and the data contained herein was prepared by me or under my direct supervision.

  
SIGNATURE

2/9/2010  
DATE

Registration No. 43844

Land Surveyor,  Professional Engineer  
 County Surveyor,  County Engineer

OFFICE OF THE COUNTY RECORDER

County of \_\_\_\_\_

I hereby certify that this document was filed in the Co. Recorders office at \_\_\_\_\_ .M on the \_\_\_\_\_ day of \_\_\_\_\_ A.D. 20 \_\_\_\_\_

County Recorder \_\_\_\_\_

By \_\_\_\_\_, Deputy

DOCUMENT NO. \_\_\_\_\_

Statement of Evidence

In 1864, C. E. Davis and J. W. Webb, Jr., did the original subdivision of the township.

The Yellow Medicine Highway Department recorded ties to the corner.

On October 9, 2009, Bueltel-Moseng Land Surveying dug with a backhoe and found a 15" field stone 3'± below the surface of the road. We set a  $\frac{3}{8}$ " iron on the east side of the stone and a 1" pipe with seal #43844 over the stone.

Doc# 250210 Fee: \$0.00 2 Pages  
Office of County Recorder  
Yellow Medicine County, Minnesota  
I hereby certify that the within instrument  
was filed on April 14, 2010 at 8:35 AM

N/C  
Bueltel-Moseng Land Surveying  
P. O. Box 32  
Marshall, MN 56258

Kay Zempel, Yellow Medicine County Recorder

By Kay Zempel Deputy

# CERTIFICATE OF LOCATION OF GOVERNMENT CORNER

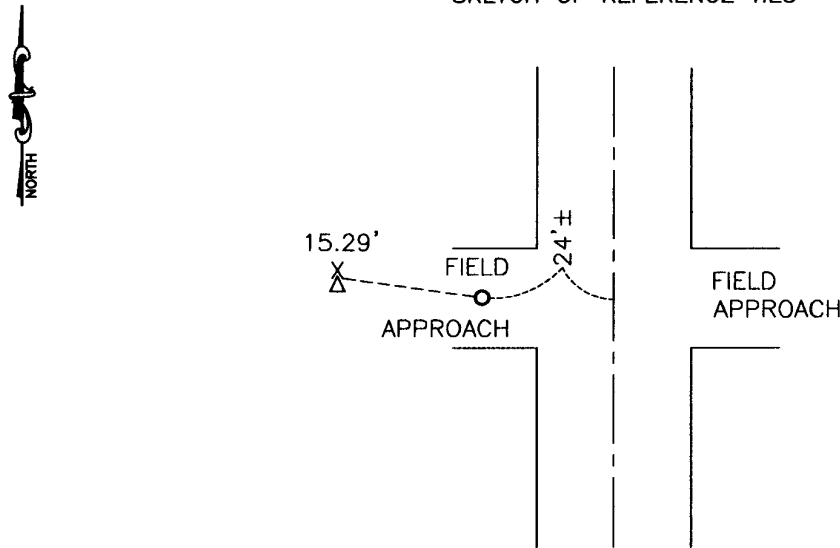
EAST QUARTER of Section 30, Township 113, Range 38, 5TH P.M.

STATE OF MINNESOTA, County of YELLOW MEDICINE

At the corner location shown on the sketch:

- On 10-09-2009 found a CONCRETE BLOCK  
DATE
- left monument as found,  lowered monument,  removed monument (explain)
- On 10-09-2009 placed a 1" PIPE WITH SEAL #43844  
DATE

### SKETCH OF REFERENCE TIES




Minnesota State Plane Coordinate  
 System Yellow Medicine County Datum  
 NAD83 (1996)

N: 108317.957  
 E: 614181.145

Nail and survey marker in pedestal guard post WNW 15.29'

Statement of evidence relative to this corner location is on back of page.

I hereby certify that this document and the data contained herein was prepared by me or under my direct supervision.

  
SIGNATURE      2/10/2010  
DATE

Registration No. 43844

- Land Surveyor,     Professional Engineer
- County Surveyor,     County Engineer

OFFICE OF THE COUNTY RECORDER

County of \_\_\_\_\_

I hereby certify that this document was filed in the Co. Recorders office at \_\_\_\_\_ .M on the \_\_\_\_\_ day of \_\_\_\_\_ A.D. 20 \_\_\_\_\_

County Recorder \_\_\_\_\_

By \_\_\_\_\_, Deputy

DOCUMENT NO. \_\_\_\_\_

Statement of Evidence

In 1864, C. E. Davis and J. W. Webb, Jr., did the original subdivision of the township.

On June 10, 1904, John Norguard found a stone in mound at the corner.

On October 9, 2009, Bueltel-Moseng Land Surveying dug by hand and found concrete block with a steel fence post next to it. The distance from the corner to the northeast corner fell within  $0.5' \pm$  of the recorded distance and the distance east to the 80 fence was within  $3' \pm$ . We held to the concrete block and set a 1" pipe with seal #43844 over it.

Doc# 250204 Fee: \$0.00 2 Pages

Office of County Recorder  
Yellow Medicine County, Minnesota  
I hereby certify that the within instrument  
was filed on April 14, 2010 at 8:05 AM

**N/C**  
**Bueltel-Moseng Land Surveying**  
**P. O. Box 32**  
**Marshall, MN 56258**

Kay Zempel, Yellow Medicine County Recorder

By Kay Zempel Deputy

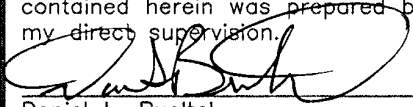
Corners to be Indexed

SE 33-113-38  
S1/4 33-113-38

Doc# 270365 Fee: \$0.00 2 Pages

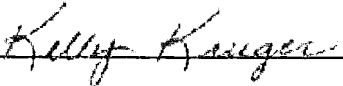
Property & Public Services  
Property Records Division  
Yellow Medicine County, Minnesota  
I hereby certify that the within instrument  
was filed on March 11, 2019 at 9:45 AM

I hereby certify that this document and the data  
contained herein was prepared by me or under  
my direct supervision.

  
Daniel L. Bueltel  
License No. 43844

3/4/2019  
Date

Janel Timm, Yellow Medicine County Recorder

By  Deputy

### CERTIFICATE OF LOCATION OF GOVERNMENT CORNER

Land survey monuments situated in Section 33, Township 113, Range 38, 5TH P.M.

STATE OF MINNESOTA, County of YELLOW MEDICINE

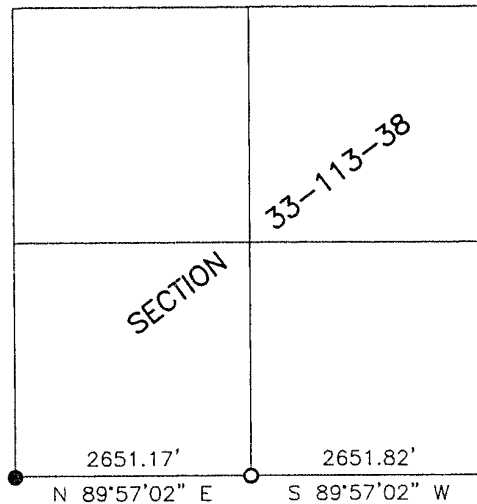
#### STATEMENT OF EVIDENCE:

- 1858 - Original government survey.
- 1967 - Arbie Nelson set MNDot cast iron monument at S1/4 and SE corners 33-113-38.



- FOUND MONUMENT
- SET MONUMENT

SW CORNER  
PK NAIL  
N:100418.905  
E:619473.195



SE CORNER  
PK NAIL  
N:100423.485  
E:624776.180

S1/4 CORNER  
5/8" IRON  
W/SEAL #43844  
N:100421.194  
E:622124.365

Minnesota State Plane Coordinate  
System Yellow Medicine County Datum NAD83 (1996)

Statement of Evidence

SE 33-113-38

In 1858, E.N. Darling did the original survey of the south line of the township.

On November 15, 1967, Arbie Nelson found a 5/8" iron stake set by MNDot using the county engineers ties. He set a MNDot cast iron monument in its place.

On December 14, 2018, Bueltel-Moseng Land Surveying set a 5/8" iron with seal #43844 using coordinates from MNDot.

S1/4 33-113-38

In 1858, E.N. Darling did the original survey of the south line of the township.

On November 15, 1967, Arbie Nelson set a MNDot cast iron monument 2652.5 feet from the south corners of Section 33 and on line between the southeast and southwest corners of Section 33-113-38.

On December 14, 2018, Bueltel-Moseng Land Surveying set a survey spike with seal #43844 using coordinates from MNDot. It is in the center of the intersection.

# CERTIFICATE OF LOCATION OF GOVERNMENT CORNER

S. E. Corner to Sec. 33 T. 113 N R. 38 W No.

State of Minnesota, } ss.

County of

I hereby certify that on the 14 th day of September 19 67

set I found the S. E. corner of Section 33, T 113 N, R 38 W

which was evidenced by 5/8" x 2' iron stake set by State Hwy. Dept. from County Hwy. Engineers ties.

and I further certify that to perpetuate the location of such corner, I did, at the exact location thereof; place a permanent marker consisting of a State Hwy. Dept. 20" x 6" x 4" cast iron monument.

I further certify that I established 3 reference or witness monuments consisting of

which reference or witness monuments are located in the manner following:

- Cap in fence post N. E. 85.90
- Cap in telephone pole N. W. 93.80
- Disc in telephone pole S. W. 111.30

Set monument with top 6" below bituminous surface of road.

Dated at Granite Falls Minn., this 15 th day of November 19 67

Arbie E. Nelson

County Surveyor & Professional Engineer  
Arbie E. Nelson Reg. # 1483

OFFICE OF REGISTER OF DEEDS

County of Yellow Medicine

I hereby certify that the within instrument was filed in this office for record on the 30

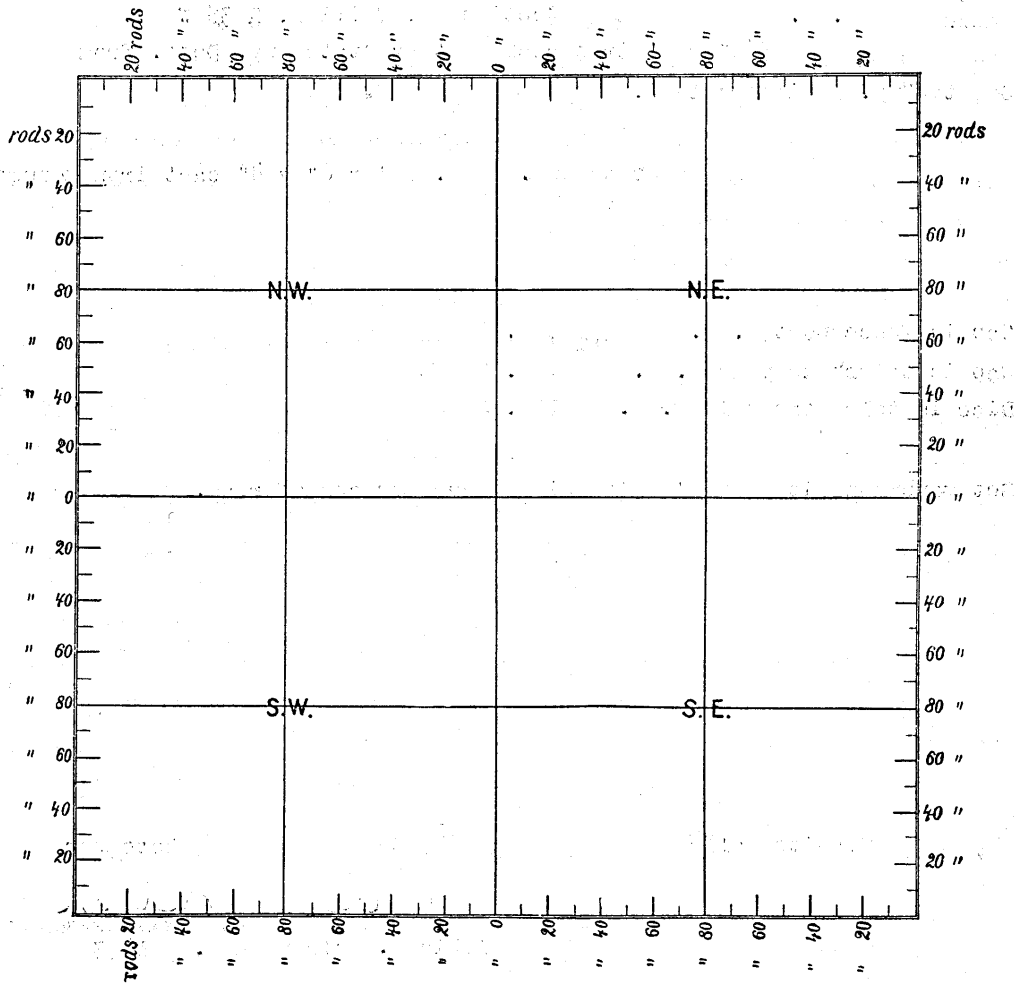
day of November A. D. 19 67 at 10:40 o'clock A. M.

153294

S. A. Haugland  
Register of Deeds.

By Deputy.

SECTION \_\_\_\_\_ TOWNSHIP \_\_\_\_\_ RANGE \_\_\_\_\_ P.M.



# CERTIFICATE OF LOCATION OF GOVERNMENT CORNER

S 1/4 Corner to Sec. 33 T. 113 N R. 38 W No.

State of Minnesota }  
County of Yellow Medicine } ss.

I hereby certify that on the 14 th day of September 1967  
I set the 1/4 corner of Section 33, T 113 N, R 38 W

which was evidenced by its location at distance of 2652.5 feet from south  
corners of Section 33 on line between corners.

and I further certify that to perpetuate the location of such corner, I did, at the exact location thereof, place  
a permanent marker consisting of a State Hwy/ Dept. 20" x 6" x 4" cast iron monument

I further certify that I established 3  
reference or witness monuments consisting of

which reference or witness monuments are located in the manner following:

- East end 15" C. M. culvert S. W. 81.0
- West end 24" C. M. culvert N. W. 65.2
- East end 24" C. M. culvert N. E. 38.9

Set monument with top 6" below surface of road.

Dated at Granite Falls, Minn., this 15 th day of November 1967

Arbie E. Nelson  
~~County Surveyor~~  
Arbie E. Nelson Reg. # 1483

OFFICE OF REGISTER OF DEEDS }  
County of Yellow Medicine }

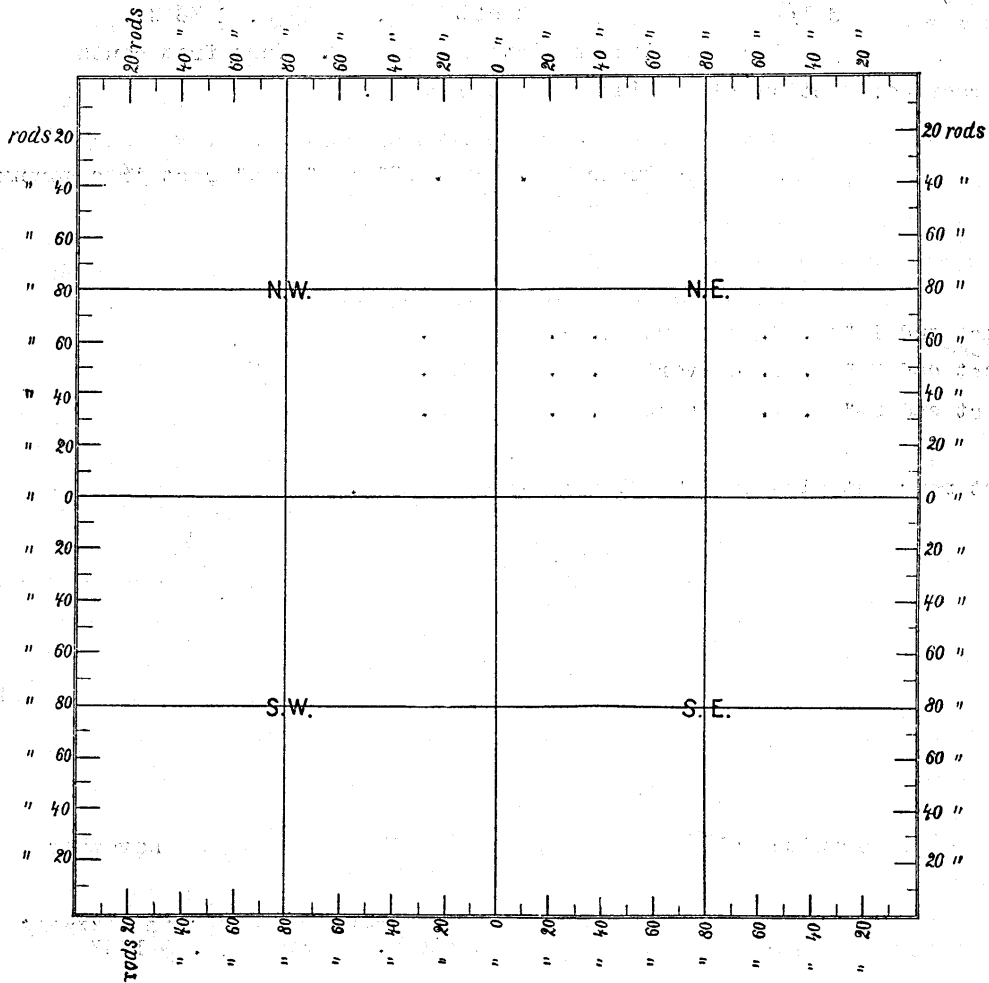
I hereby certify that the within instrument was filed in this office for record on the 30  
day of November A. D. 19 67 at 10:30 o'clock A. M.

153293

S.A. Haugland  
Register of Deeds

By Deputy

SECTION \_\_\_\_\_ TOWNSHIP \_\_\_\_\_ RANGE \_\_\_\_\_ P.M.



Corners to be Indexed

SE 34-113-38  
S1/4 34-113-38

Doc# 270366 Fee: \$0.00 2 Pages

Property & Public Services  
Property Records Division  
Yellow Medicine County, Minnesota  
I hereby certify that the within instrument  
was filed on March 11, 2019 at 9:50 AM

I hereby certify that this document and the data  
contained herein was prepared by me or under  
my direct supervision.

*[Signature]* 3/4/2019  
Date

Daniel L. Bueltel  
License No. 43844

Janel Timm, Yellow Medicine County Recorder

By *[Signature]* Deputy

### CERTIFICATE OF LOCATION OF GOVERNMENT CORNER

Land survey monuments situated in Section 34, Township 113, Range 38, 5TH P.M.

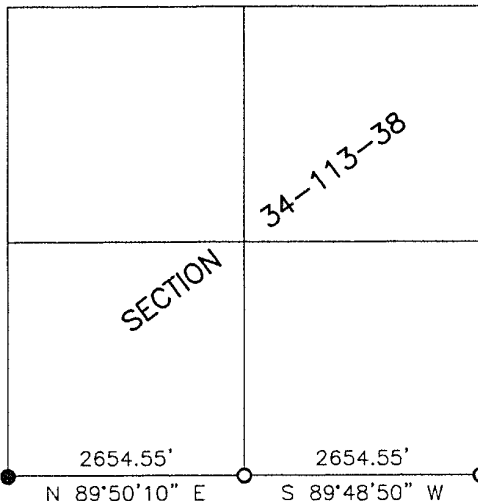
STATE OF MINNESOTA, County of YELLOW MEDICINE

#### STATEMENT OF EVIDENCE:

- 1858 - Original government survey.
- 1967 - Arbie Nelson set a spike at the S1/4 corner 34-113-38.



- FOUND MONUMENT
- SET MONUMENT



SW CORNER  
5/8" IRON  
W/SEAL #43844  
N:100423.485  
E:624776.180

S1/4 CORNER  
PK NAIL  
N:100431.075  
E:627430.723

SE CORNER  
PK NAIL  
N:100439.702  
E:630085.262

Minnesota State Plane Coordinate  
System Yellow Medicine County Datum NAD83 (1996)

Statement of Evidence

SE 34-113-38

In 1858, E.N. Darling did the original survey of the south line of the township.

On December 14, 2018, Bueltel-Moseng Land Surveying set a PK nail using coordinate from MNDot. It is in the center of the intersection.

S1/4 34-113-38

In 1858, E.N. Darling did the original survey of the south line of the township.

On November 15, 1967, Arbie Nelson set a spike in the pavement 3' west of the fence to the north and 2654.5' from the southeast corner of Section 34-113-38.

On December 14, 2018, Bueltel-Moseng Land Surveying set a PK nail using coordinates from MNDot. It is in the center of MN T.H. No. 19 and in line with the fence to the north.

# CERTIFICATE OF LOCATION OF GOVERNMENT CORNER

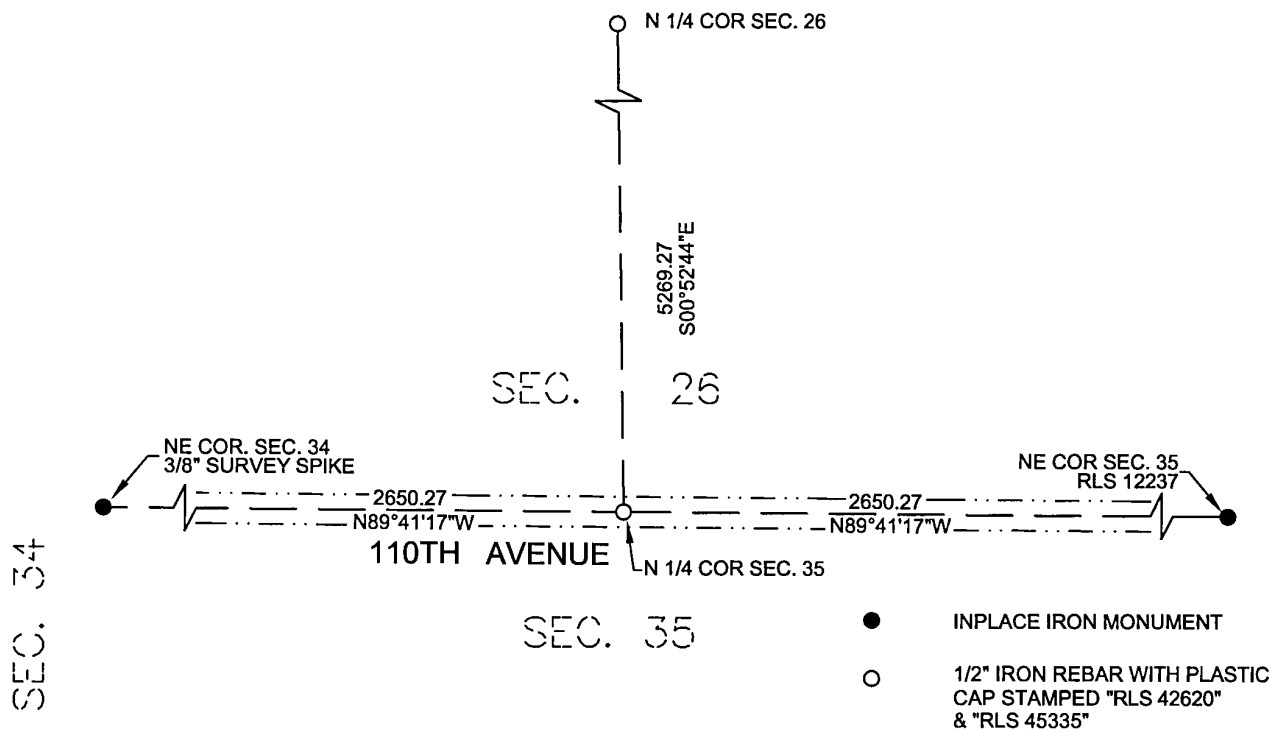
N 1/4 Corner of Section 35 , Township 113 North, Range 38 West of the 5th P.M. State of Minnesota, County of Yellow Medicine .

At the corner location shown on the sketch:

On \_\_\_\_\_ found a \_\_\_\_\_

On 1/23/2019 placed a 1/2" x 18" iron rebar with a plastic cap stamped "RLS 42620 & RLS 45335".

## SKETCH OF REFERENCE TIES



I hereby certify that this survey, plan, report was prepared by me or under my direct supervision and that I am a duly Registered Land Surveyor under the laws of the State of Minnesota.

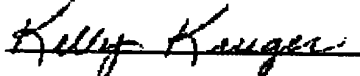
  
Eric G. Nyberg

Date January 31st, 2019 License No. 45335

Doc# 270398 Fee: \$0.00 2 Pages

Property & Public Services  
Property Records Division  
Yellow Medicine County, Minnesota  
I hereby certify that the within instrument was filed on March 18, 2019 at 9:35 AM

Janel Timm, Yellow Medicine County Recorder

By  Deputy

Statement of evidence for this corner position is on the back of this page

(FILE NO. 9986)

## STATEMENT OF EVIDENCE

North Quarter Corner of Section 35, Township 113 North, Range 38 West, Yellow Medicine County, Minnesota.

- 1864 The U.S. General Land Office field notes, on file in the MN Secretary of State's Office, describe this original corner as a oak post in mound with trench & pit for 1/4 section corner.
- 2019 Nyberg Surveying did not find any evidence of the original section corner at this location. The corner was considered to be lost and was reestablished by single proportionate measurement using the Northeast Corner of Section 34 and the Northeast Corner of Section 35. The position was found to measure 2650.27 feet from the adjoining section corners. The corner lies on the centerline of 110th Avenue.
- 2019 A 1/2" iron rebar stamped "RLS 42650 & RLS 45335" was set at this location and its position was accepted as the North Quarter Corner of Section 35.

Property & Public Services  
Property Records Division  
Yellow Medicine County, Minnesota  
I hereby certify that the within instrument  
was filed on February 23, 2026 at 10:30 AM

Janel Timm, Yellow Medicine County Recorder

*Alipiel J. Fischer*

# CERTIFICATE OF LOCATION OF GOVERNMENT CORNER

**Northeast** Corner of Section **7**, Township **113**, Range **38**

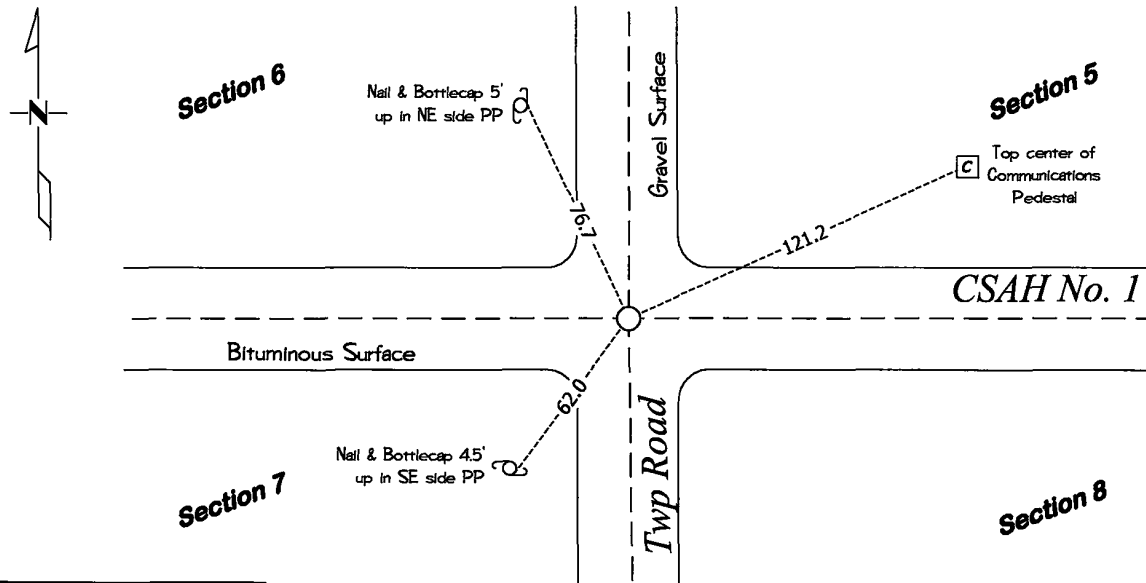
**Fifth** Principal Meridian, State of Minnesota, County of **Yellow Medicine**

At the corner location shown on the sketch:

On April 30, 2025 found a PK Nail over 8" Spike  
DATE

left monument as found       lowered monument       removed monument (explain)

On Feb. 3, 2026 placed a Survey Spike with a "46169-46171-62454" stamped aluminum washer  
DATE at the location of the PK Nail and spike



Yellow Med. County 2011 adj.  
N: 126830.96 (NAD 83)  
E: 614037.36

Latitude: 44° 36' 51.8907"  
Longitude: 95° 27' 43.6158"

Statement of evidence for this corner location is on back of this page.

I hereby certify that this survey, plan, or report was prepared by me or under my direct supervision and that I am a duly Licensed Land Surveyor under the laws of the state of Minnesota.

Signature *Eco A. Van Beck* Date 2-16-2026  
Eco A. Van Beck, Minnesota Registered Land Surveyor #62454

# ***STATEMENT OF EVIDENCE***

## ***Northeast Corner of Section 7, T113N-R38W***

(Page 1 of 2)

- 1864** CE Davis & JW Webb Jr were contracted by the United States Government Land Office to perform the Original Public Land Survey in this township. Davis and Webb record in their field notes that they "Set post mound with trench + pits for corner to secs 5, 6, 7 + 8."
- 1899-1901** County Survey Record Book B, Page 45, contains a map of Echo Township and notes dimensions to this corner position.
- 1899-1901** John Norgaard, County Surveyor, notes on County Survey Record Book B, Page 209, "Found stone and stake at the intersection of roads set top of monument level with ground" at this corner position. Norgaard also notes in his title block at the beginning of County Survey Record Book B, "The monuments are jasper granite 2 feet long and 6"x 6"."
- 1918** John Norgaard notes on County Survey Record Book A, Page 413, dimensions to this corner position but does not mention monument type.
- 1920** John Norgaard notes on County Survey Record Book A, Page 430, "found mont" at this corner and dimensions to this corner position. Norgaard also notes 2 section corner witness ties.
- Unknown** Yellow Medicine County Highway Engineer Road Plans for County Road No. 1, County Project No. SAP 87-601-02, Sheet 3, notes this corner position and lists the station of the section line crossing but does not mention monument type.
- Unknown** Yellow Medicine County Highway Department records in a witness tie book for Echo Township, 2 section corner witness ties but does not mention monument type.
- 1980** Yellow Medicine County Highway Engineer Field Book for CSAH No.1 - Topog, notes "Located Spike" at this corner position and established 3 section corner witness ties.
- Aug. 27, 2019** Jerry G. Johnson, LS 50343, prepared a Certificate of Location of Government Corner for the N¼ Corner of Section 7 and notes "PK Nail" and dimensions to this section corner position.
- Nov 10, 2021** Daniel L Bueltel, LS 43844, while performing a survey in Section 6 , notes a "P.K. Nail" at this corner position.

## ***STATEMENT OF EVIDENCE***

---

### ***Northeast Corner of Section 7, T113N-R38W***

(Page 2 of 2)

- April 30, 2025** Leo A. Van Beck, LS 62454, found a PK Nail at this corner position. With the aid of a backhoe a 6.5' deep hole was dug that covered an area extending 5.9' North, 6.0' South, 3.1' East, and 3.2' West of the location of the PK Nail. At a depth of 1.8' a 8" spiral shank spike was found. At a depth of 4.4' the original topsoil was found. No other evidence was found and the PK Nail set over the spiral shank spike was accepted as the best available evidence of the section corner location. This corner position was also verified with 1 of 3 witness ties recorded in the 1980 Yellow Medicine County Highway Department field book.
- Feb. 3, 2026** Leo A. Van Beck, LS 62454, set a Survey Spike with a "46169-46171-62454" stamped aluminum washer at the location of the former PK Nail and spiral shank spike. The coordinates of this section corner were recorded in the Minnesota Department of Transportation Yellow Medicine County Coordinate System (2011 Adjustment). The latitude and longitude coordinates listed were derived using MNCON software.

Property & Public Services  
Property Records Division  
Yellow Medicine County, Minnesota  
I hereby certify that the within instrument  
was filed on February 23, 2026 at 10:30 AM

Janel Timm, Yellow Medicine County Recorder

Alipal J. Fischer

# CERTIFICATE OF LOCATION OF GOVERNMENT CORNER

**Northeast** Corner of Section **8**, Township **113**, Range **38**

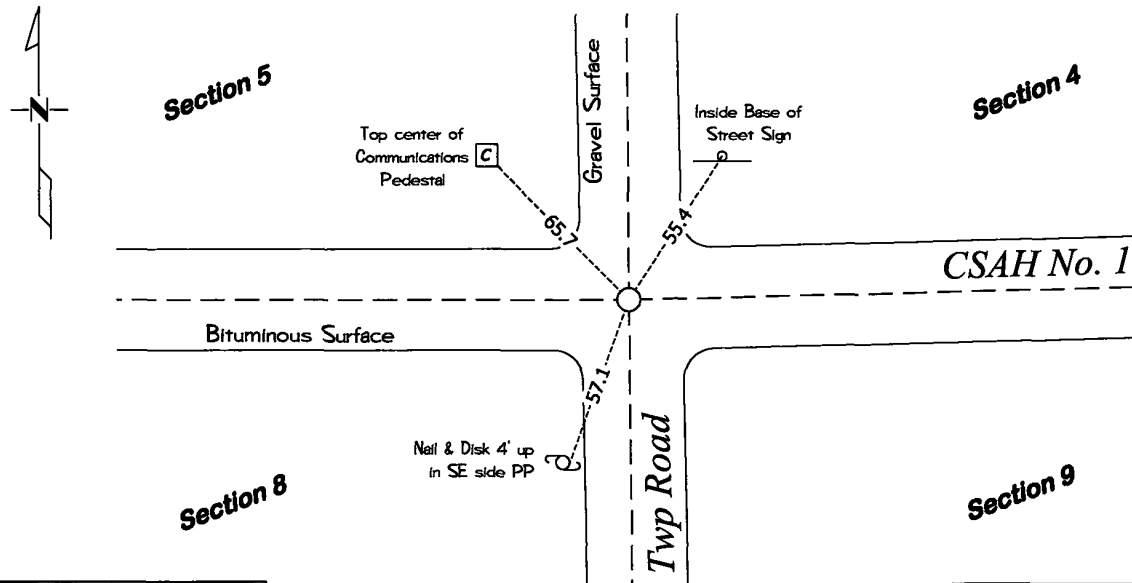
**Fifth** Principal Meridian, State of Minnesota, County of **Yellow Medicine**

At the corner location shown on the sketch:

On April 30, 2025 found a PK Nail over Railroad Spike  
DATE

left monument as found       lowered monument       removed monument (explain)

On Feb. 3, 2026 placed a Survey Spike with a "46169-46171-62454" stamped aluminum washer  
DATE at the location of the PK Nail and Railroad Spike




Yellow Med. County 2011 adj.  
N: 126830.58 (NAD 83)  
E: 619329.55

Latitude: 44° 36' 51.5989"  
Longitude: 95° 26' 30.4612"

Statement of evidence for this corner location is on back of this page.

I hereby certify that this survey, plan, or report was prepared by me or under my direct supervision and that I am a duly Licensed Land Surveyor under the laws of the state of Minnesota.

Signature  Date 2-16-2026  
Leo A. Van Beck, Minnesota Registered Land Surveyor #62454

## ***STATEMENT OF EVIDENCE***

### ***Northeast Corner of Section 8, T113N-R38W***

- 1864** CE Davis & JW Webb Jr were contracted by the United States Government Land Office to perform the Original Public Land Survey in this township. Davis & Webb record in their field notes that they "Set post in mound with trench & pits for corner 4, 5, 8 + 9."
- 1899-1901** John Norgaard, County Surveyor, notes on County Survey Record Book B, Page 209, "Found stone set by adjoining landowners the government mound set top of monument 2" above ground" at this corner position. Norgaard also notes in his title block at the beginning of County Survey Record Book B, "The monuments are jasper granite 2 feet long and 6"x 6"."
- 1920** John Norgaard notes on County Survey Record Book A, Page 430, dimensions to this corner position but does not mention monument type.
- Oct. 1937** John Norgaard notes on County Survey Record Book A, Page 543, dimensions to this corner position but does not mention monument type.
- Unknown** Yellow Medicine County Highway Department records in a witness tie book for Echo Township, 2 section corner witness ties but does not mention monument type.
- 1980** Yellow Medicine County Highway Engineer Field Book for CSAH No.1 - Topog, notes "Located Spike" at this corner position and established 2 section corner witness ties.
- Apr. 25, 1991** Gerald F. Vickerman, LS 12237, while performing a survey in Section 9, notes "RR Spk" at this corner position.
- Feb. 3, 2026** Leo A. Van Beck, LS 62454, found a PK Nail set over the top of a Railroad Spike at this corner position. No large scale excavation was performed at this corner position as this corner lands within the surface of the County Road with very deep adjacent natural grades. The Railroad Spike was accepted as the best available evidence of the section corner location. A Survey Spike with a "46169-46171-62454" stamped aluminum washer was set at the location of the Railroad Spike after it was destroyed during road construction. The coordinates of this section corner were recorded in the Minnesota Department of Transportation Yellow Medicine County Coordinate System (2011 Adjustment). The latitude and longitude coordinates listed were derived using MNCON software.

Doc# 285959 Fee: \$0.00 2 Pages

Property & Public Services  
Property Records Division  
Yellow Medicine County, Minnesota  
I hereby certify that the within instrument  
was filed on February 23, 2026 at 10:30 AM

Janel Timm, Yellow Medicine County Recorder

*Aligail J. Fischer*

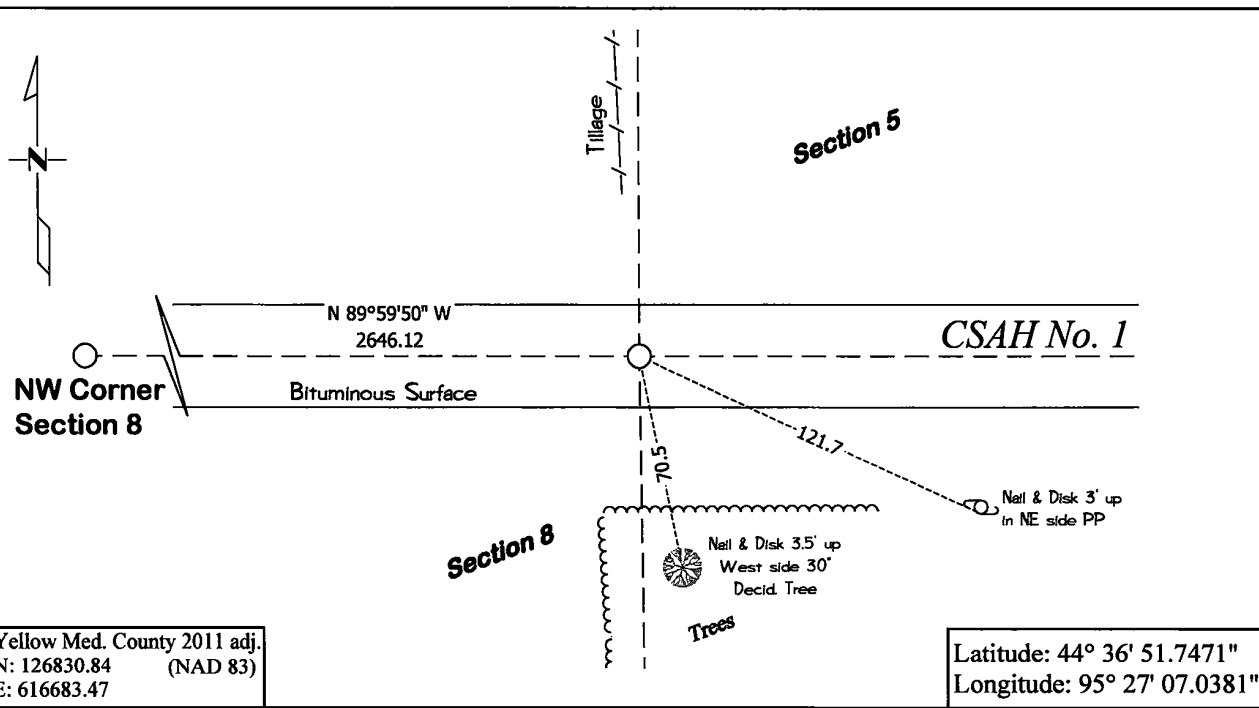
# CERTIFICATE OF LOCATION OF GOVERNMENT CORNER

**North Quarter** Corner of Section **8**, Township **113**, Range **38**

**Fifth** Principal Meridian, State of Minnesota, County of **Yellow Medicine**

At the corner location shown on the sketch:

- On March 4, 2025 found a PK nail at the surface of the road  
DATE
- left monument as found       lowered monument       removed monument (explain)
- On Feb. 3, 2026 placed a Survey Spike with a "46169-46171-62454" stamped aluminum washer  
DATE at the location of the PK Nail



Yellow Med. County 2011 adj.  
N: 126830.84 (NAD 83)  
E: 616683.47

Latitude: 44° 36' 51.7471"  
Longitude: 95° 27' 07.0381"

Statement of evidence for this corner location is on back of this page.

I hereby certify that this survey, plan, or report was prepared by me or under my direct supervision and that I am a duly Licensed Land Surveyor under the laws of the state of Minnesota.

Signature *Leo A. Van Beck*

Date 2-16-2026

Leo A. Van Beck, Minnesota Registered Land Surveyor #62454

## ***STATEMENT OF EVIDENCE***

### ***North Quarter Corner of Section 8, T113N-R38W***

- 1864** CE Davis & JW Webb Jr were contracted by the United States Government Land Office to perform the Original Public Land Survey in this township. Davis & Webb record in their field notes that they “Set post in mound with trench & pits for ¼ sec corner.”
- 1918** John Norgaard notes on County Survey Record Book A, Page 413, “Used fence lines running N.S as set from a former survey by me” at this corner position.
- 1920** John Norgaard notes on County Survey Record Book A, Page 430, “Used N.+S. fence line set from a survey made several years ago” at this corner position.
- April 30, 2025** Leo A. Van Beck, LS 62454, found a PK Nail at this corner position. With the aid of a backhoe a 6.3’ deep hole was dug that covered an area extending 3’ North, 3’ South, 9’ East, and 2’ West of the location of the PK Nail. At a depth of 3.8’ an old roadbed was found. At a depth of 5.0’ the original topsoil was found. No additional evidence indicating the exact location of this section corner was recovered. We also searched for evidence of the north-south fenceline as mentioned in John Norgaard’s records and found remnants of a fenceline several hundred feet to the south which matched very well with the PK Nail location.
- Feb. 3, 2026** Leo A. Van Beck, LS 62454, set a Survey Spike with a “46169-46171-62454” stamped aluminum washer was set at the location of the former PK Nail. The coordinates of this section corner were recorded in the Minnesota Department of Transportation Yellow Medicine County Coordinate System (2011 Adjustment). The latitude and longitude coordinates listed were derived using MNCON software.

Janel Timm, Yellow Medicine County Recorder

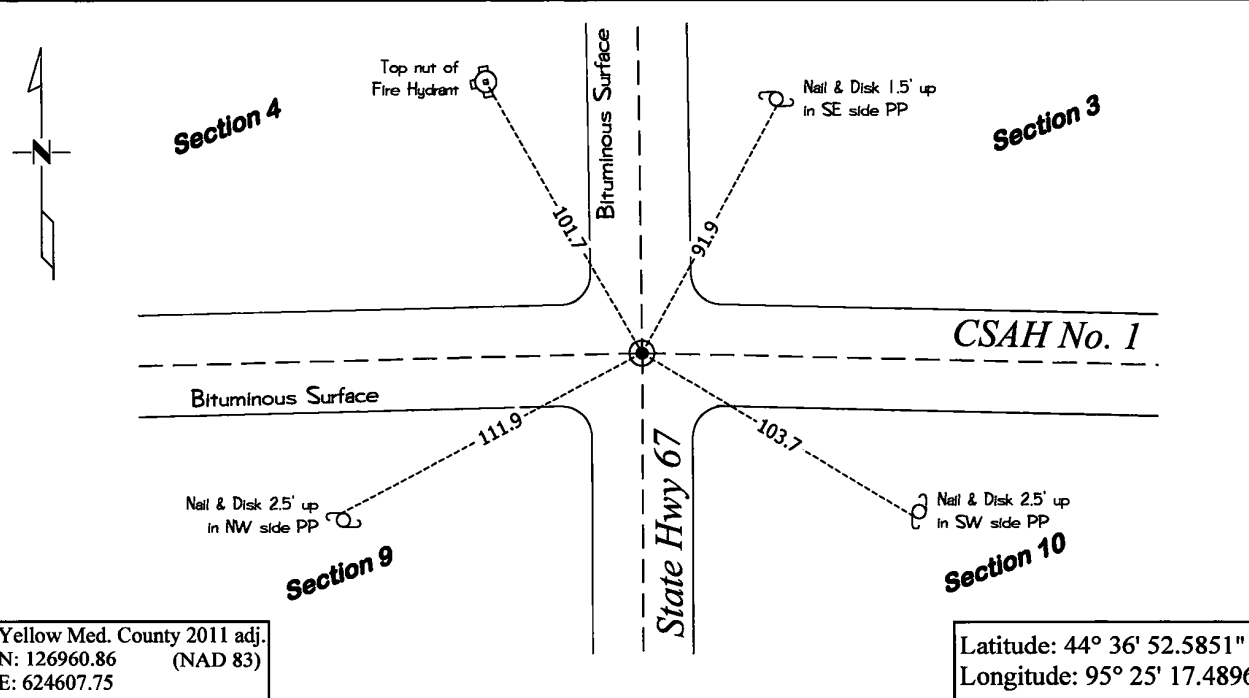
Alvin J. Fischer

# CERTIFICATE OF LOCATION OF GOVERNMENT CORNER

**Northeast** Corner of Section **9**, Township **113**, Range **38**  
**Fifth** Principal Meridian, State of Minnesota, County of **Yellow Medicine**

At the corner location shown on the sketch:

- On April 18, 2025 found a Cast Iron Monument  
DATE
- left monument as found       lowered monument       removed monument (explain)
- On \_\_\_\_\_ placed a \_\_\_\_\_  
DATE



Statement of evidence for this corner location is on back of this page.

I hereby certify that this survey, plan, or report was prepared by me or under my direct supervision and that I am a duly Licensed Land Surveyor under the laws of the state of Minnesota.

Signature  Date 2-16-2026  
 Leo A. Van Beck, Minnesota Registered Land Surveyor #62454

## ***STATEMENT OF EVIDENCE***

### ***Northeast Corner of Section 9, T113N-R38W***

(Page 1 of 2)

- 1864** CE Davis & JW Webb Jr were contracted by the United States Government Land Office to perform the Original Public Land Survey in this township. Davis and Webb record in their field notes that they "Set post in mound with trench pits for corner to secs 3, 4, 9 + 10."
- Sept. 1, 1884** W.S. Dawley, prepared the record plat entitled PLAT OF ECHO, on file in the office of the Yellow Medicine Recorder. On this document he notes the dimensions to this corner position but does not mention what type of monument was found.
- May, 1887** County Survey Record Book A, Page 91, notes "found the NE cor" at this corner position.
- 1899-1901** John Norgaard, County Surveyor, notes on County Survey Record Book B, Page 209, "Located according to plat of the Village of Echo set top of monument level with ground" at this corner position. Norgaard also notes in his title block at the beginning of CSRB-B, "The monuments are jasper granite 2 feet long and 6"x6"."
- Oct. 1912** John Norgaard, County Surveyor, notes on County Survey Record Book A, Page 279, "N.E. corner found jasper stone monument" at this corner and dimensions to this corner position.
- June 30, 1917** The Minneapolis & St. Louis Railroad Right of Way Map No. 1029CS4, notes dimensions to this corner but does not mention what type of monument was found.
- Dec. 28, 1925** John Norgaard, Yellow Medicine County Surveyor, prepared the record plat entitled AUDITOR'S PLAT NO. 9, on file in the office of the Yellow Medicine Recorder. On this document he notes "S $\frac{1}{4}$  Post" at this corner position.
- 1940** Minnesota Department of Transportation Field Book No. 12 for State Project 8707, Alignment – Land Ties for Trunk Highway No. 67, notes angles to other section lines and lists the station of the section line crossing at Station 765+69.8 but does not mention what type of monument was found.
- May 25, 1965** A. J. Fischer, records in field book S.P. 8707 T.H. 67, Alignment – Land Ties, on page 1-21, "found a 6"x6" stone monu. 2.5' below present grade placed 5/8"x24" Iron Pin over Monu." He also notes 3 section corner witness ties.
- Unknown** Minnesota Department of Transportation Highway Right of Way Map No. 31-47, State Project 8707, for Trunk Highway 67 notes "Sec. Cor at P.O.T. 765+69.8" and notes 3 section corner witness ties but does not mention what type of monument was found.

## ***STATEMENT OF EVIDENCE***

### ***Northeast Corner of Section 9, T113N-R38W***

(Page 2 of 2)

- 1968** Minnesota Department of Transportation Field Book No. 16 for State Project 8707, Alignment – Land Ties for Trunk Highway No. 67, notes angles to other section lines and lists the station of the section line crossing but does not mention what type of monument was found.
- Unknown** Minnesota Department of Transportation Highway Right of Way Map No. 34-66, sheet 8 for Trunk Highway 67 notes “SEC. COR. IS AT P.I. 365+51.1 = 765+69.8 6”x6” STONE MONUMENT INPLACE 2.5’ BELOW PRESENT GRADE. PLACED 5/8” X 24” IRON PIN OVER MONUMENT” and notes 3 section corner witness ties.
- Sept. 1969** James E. Boerhave, LS 7095, while performing a survey in Section 10, notes a “Iron Monument” at this corner and dimensions to this corner position.
- Unknown** Yellow Medicine County Highway Department records in a witness tie book for Echo Township, 3 section corner witness ties at this corner position but does not mention monument type.
- Unknown** Yellow Medicine County Highway Engineer Road Plans for County Road No.1, County Project No. S.A.P 87-601-02, Sheet 3, notes “SECTION CORNER STA. 0+00” but does not mention what type of monument was found.
- Unknown** Yellow Medicine County Highway Engineer Road Plans for County Road No.1, County Project No. S.A.P 87-601-04 Sheet 5, ‘SECTION CORNER STA. 320+64.7” but does not mention what type of monument was found.
- 1980** Yellow Medicine County Highway Engineer Field Book for CSAH No.1 - Topog, notes “Located Spike” at this corner position and established 3 section corner witness ties.
- Apr. 18, 2025** Leo A. Van Beck, LS 62454, found a Cast Iron Monument at this corner position and the monument was left as it was found. No large scale excavation was performed at this corner position as it lands within the MNDOT highway. The position of this corner was verified by using former County Surveyor records, MNDOT Records, Highway Department Records, surveys, and plats. The coordinates of this section corner were recorded in the Minnesota Department of Transportation Yellow Medicine County Coordinate System (2011 Adjustment). The latitude and longitude coordinates listed were derived using MNCON software.

Doc# 285958 Fee: \$0.00 2 Pages  
 Property & Public Services  
 Property Records Division  
 Yellow Medicine County, Minnesota  
 I hereby certify that the within instrument  
 was filed on February 23, 2026 at 10:30 AM

Janel Timm, Yellow Medicine County Recorder

*Aliquid J. Fischer*

<b>CERTIFICATE OF LOCATION OF GOVERNMENT CORNER</b>	
<b>North Quarter</b>	Corner of Section <u>9</u> , Township <u>113</u> , Range <u>38</u>
<b>Fifth</b> Principal Meridian, State of Minnesota, County of <b>Yellow Medicine</b>	
At the corner location shown on the sketch:	
<input checked="" type="checkbox"/> On <u>March 4, 2025</u> found a <u>PK Nail over Railroad Spike</u> <small style="margin-left: 100px;">DATE</small>	
<input type="checkbox"/> left monument as found <input type="checkbox"/> lowered monument <input checked="" type="checkbox"/> removed monument (explain)	
<input checked="" type="checkbox"/> On <u>Feb. 3, 2026</u> placed a <u>Survey Spike with a "46169-46171-62454" stamped aluminum washer</u> <small style="margin-left: 100px;">DATE</small> at the location of the PK Nail and Railroad Spike	
Yellow Med. County 2011 adj. N: 126895.72 (NAD 83) E: 621968.61	Latitude: 44° 36' 52.0936" Longitude: 95° 25' 53.9760"
Statement of evidence for this corner location is on back of this page.	
I hereby certify that this survey, plan, or report was prepared by me or under my direct supervision and that I am a duly Licensed Land Surveyor under the laws of the state of Minnesota.	
Signature <u><i>Leo A. Van Beck</i></u>	Date <u>2-16-2026</u>
Leo A. Van Beck, Minnesota Registered Land Surveyor #62454	

## ***STATEMENT OF EVIDENCE***

### ***North Quarter Corner of Section 9, T113N-R38W***

- 1864** CE Davis & JW Webb Jr were contracted by the United States Government Land Office to perform the Original Public Land Survey in this township. Davis & Webb record in their field notes that they “Set post in mound with trench + pits for ¼ sec corner.”
- May, 1887** County Survey Record Book A, Page 91, notes “found N ¼ cor” at this corner position.
- Apr. 25, 1991** Gerald F Vickerman, LS 12237, while performing a survey in Section 9, notes “RR Spk” at this corner position.
- Apr. 30, 2025** Leo A. Van Beck, LS 62454, found a PK Nail set over a Railroad Spike at this corner position. With the aid of a backhoe a 4.0’ deep hole was dug that covered an area extending 3’ North, 3.5’ South, 5’ East, and 5’ West of the location of the Railroad Spike. No additional evidence indicating the exact location of this section corner was recovered as this area appeared to have been sub-cut below natural grade during road construction.
- Feb. 3, 2026** Leo A. Van Beck, LS 62454, set a Survey Spike with a “46169-46171-62454” stamped aluminum washer at the location of the former PK Nail and Railroad Spike. The coordinates of this section corner were recorded in the Minnesota Department of Transportation Yellow Medicine County Coordinate System (2011 Adjustment). The latitude and longitude coordinates listed were derived using MNCON software.

Doc# 285949 Fee: \$0.00 3 Pages  
 Property & Public Services  
 Property Records Division  
 Yellow Medicine County, Minnesota  
 I hereby certify that the within instrument  
 was filed on February 23, 2026 at 10:30 AM

Janel Timm, Yellow Medicine County Recorder

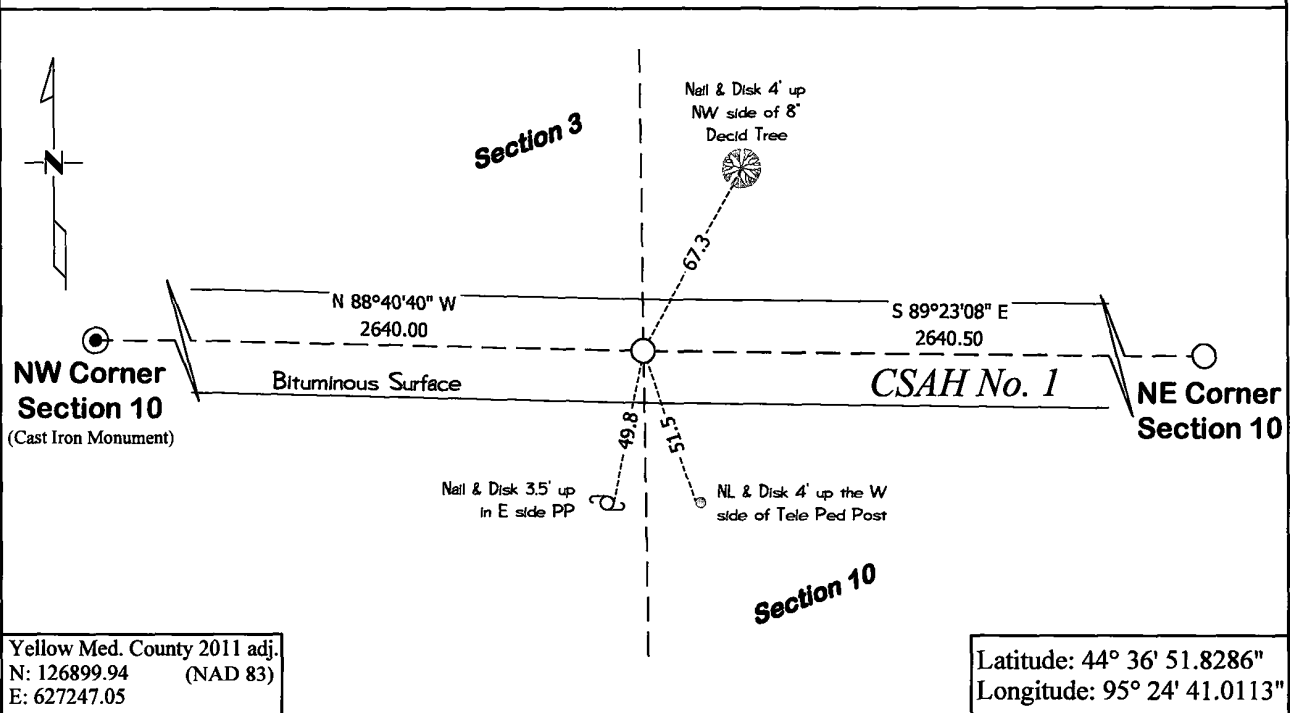
*Aliquid J. Fischer*

## CERTIFICATE OF LOCATION OF GOVERNMENT CORNER

**North Quarter** Corner of Section **10**, Township **113**, Range **38**  
**Fifth** Principal Meridian, State of Minnesota, County of **Yellow Medicine**

At the corner location shown on the sketch:

- On Apr. 29, 2025 found a No Existing Monumentation  
DATE
- left monument as found       lowered monument       removed monument (explain)
- On Feb. 3, 2026 placed a Survey Spike with a "46169-46171-62454" stamped aluminum washer  
DATE



Yellow Med. County 2011 adj.  
 N: 126899.94 (NAD 83)  
 E: 627247.05

Latitude: 44° 36' 51.8286"  
 Longitude: 95° 24' 41.0113"

Statement of evidence for this corner location is on back of this page.

I hereby certify that this survey, plan, or report was prepared by me or under my direct supervision and that I am a duly Licensed Land Surveyor under the laws of the state of Minnesota.

Signature *Leo A. Van Beck* Date 2-16-2026  
 Leo A. Van Beck, Minnesota Registered Land Surveyor #62454

## **STATEMENT OF EVIDENCE**

### **North Quarter Corner of Section 10, T113N-R38W**

(Page 1 of 2)

- 1864** CE Davis & JW Webb Jr were contracted by the United States Government Land Office to perform the Original Public Land Survey in this township. Davis and Webb record in their field notes that they "Set post in mound with trench & pits for ¼ sec corner."
- Sept. 1, 1884** W.S. Dawley, prepared the record plat entitled PLAT OF ECHO, on file in the office of the Yellow Medicine Recorder. On this document he notes the dimensions to this corner position but does not mention what type of monument was found.
- June 30, 1917** The Minneapolis & St. Louis Railroad Right of Way Map No. 1029CS4, notes dimensions to this corner but does not mention what type of monument was found.
- June 30, 1917** The Minneapolis & St. Louis Railroad Echo Station Plat No. A 44-44, notes this corner position and lists the station of the section line crossing but does not mention what type of monument was found.
- Dec. 28, 1925** John Norgaard, Yellow Medicine County Surveyor, prepared the record plat entitled AUDITOR'S PLAT NO. 9, on file in the office of the Yellow Medicine Recorder. On this document he notes "S¼ Post" at this corner position.
- Unknown** Yellow Medicine County Highway Engineer Road Plans for County Road No.1, County Project No. S.A.P 87-601-04, Sheet 3, lists the station of the section line crossing at station 26+35.6 but does not mention what type of monument was found.
- Nov. 30, 1967** Arbie E. Nelson, LS 1483, prepared a Certificate of Location of Government Corner and notes he placed a "State Hwy. Dept. 20"x6"x4" cast iron monument" at this corner position. He also notes "its location 2640 feet east of section corner and 69.5 feet east from the west line of East Street, Echo, Original Plat" and recorded 3 section corner witness ties.
- 1968** Minnesota Department of Transportation Field Book No. 16 for State Project S.P. 8707, (Alignment - Topography - Utilities - Land Ties) for Trunk Highway No. 67, notes "6" Cast Iron Monu. 2.5' West of Fe Line north 6" below road surface" at this corner position and records 3 section corner witness ties.
- 2008** Bonnema Surveys, while performing a survey in Section 3, used a computed position based on the dimensions given in the corner certificate prepared by LS 1483 in 1967.
- 2016** Bonnema Runke Stern Inc., while performing a survey in Section 3, used a computed position based on the dimensions given in the corner certificate prepared by LS 1483 in 1967.

## ***STATEMENT OF EVIDENCE***

---

### ***North Quarter Corner of Section 10, T113N-R38W***

(Page 2 of 2)

**April 29, 2025**

Leo A. Van Beck, LS 62454, searched with a metal locator and found no existing monumentation at this corner position. With the aid of a backhoe a 4.0' deep hole was dug that covered an area extending 3' North, 3' South, 3' East and 8' West of a computed position 2640' east of the southwest corner of Section 10. At a depth of 2.7' the original topsoil was found. No additional evidence indicating the exact location of this section corner was recovered. The position of this corner was verified by using former County Surveyor records, surveys, plats, and field notes from MNDOT and the Yellow Medicine County Highway Department.

**Feb. 3, 2026**

Leo A. Van Beck, LS 62454, set a Survey Spike with a "46169-46171-62454" stamped aluminum washer at a computed position that is 2640 feet east of the NW corner and on the road centerline, as noted on the corner certificate prepared by LS 1483 in 1967. The coordinates of this section corner were recorded in the Minnesota Department of Transportation Yellow Medicine County Coordinate System (2011 Adjustment). The latitude and longitude coordinates listed were derived using MNCON software.

Property & Public Services  
Property Records Division  
Yellow Medicine County, Minnesota  
I hereby certify that the within instrument  
was filed on February 23, 2026 at 10:30 AM

Janel Timm, Yellow Medicine County Recorder

*Aliquid J Fischer*

# CERTIFICATE OF LOCATION OF GOVERNMENT CORNER

**Northeast** Corner of Section **10**, Township **113**, Range **38**

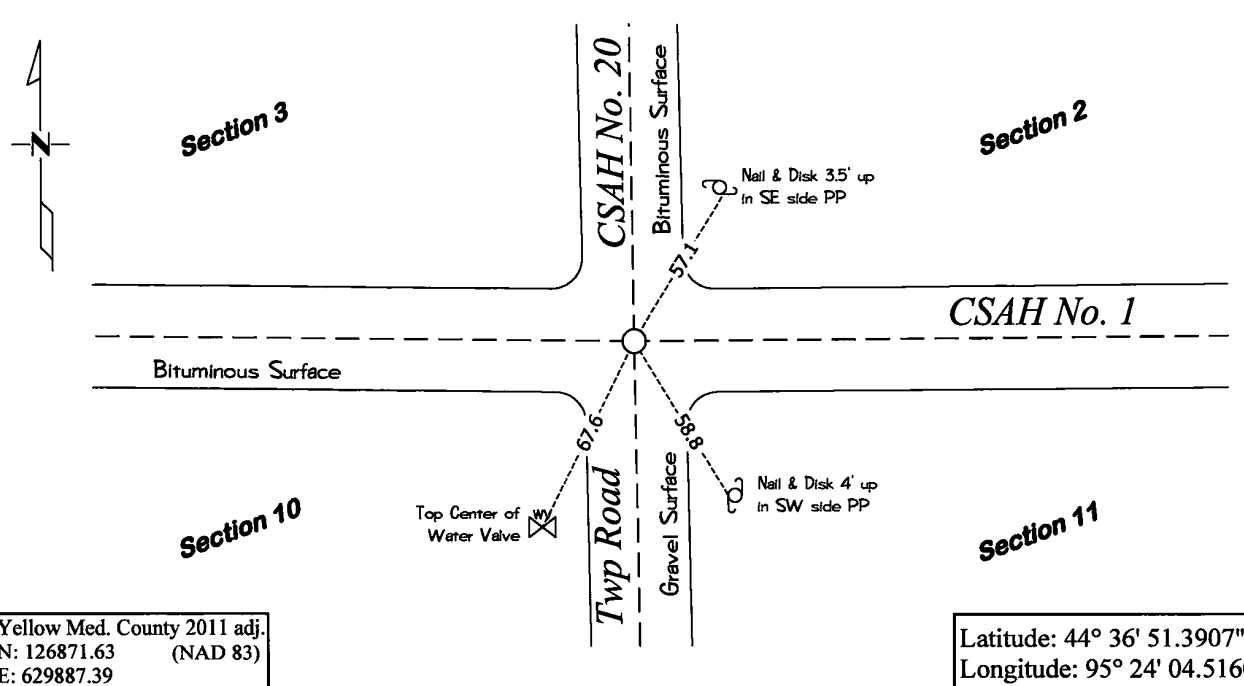
**Fifth** Principal Meridian, State of Minnesota, County of **Yellow Medicine**

At the corner location shown on the sketch:

On March 4, 2025 found a PK nail at the surface of the road  
DATE

left monument as found       lowered monument       removed monument (explain)

On Feb. 3, 2026 placed a Survey Spike with a "46169-46171-62454" stamped aluminum washer  
DATE at the location of the PK Nail



Statement of evidence for this corner location is on back of this page.

I hereby certify that this survey, plan, or report was prepared by me or under my direct supervision and that I am a duly Licensed Land Surveyor under the laws of the state of Minnesota.

Signature *Leo A. Van Beck* Date 2-16-2026  
Leo A. Van Beck, Minnesota Registered Land Surveyor #62454

## ***STATEMENT OF EVIDENCE***

### ***Northeast Corner of Section 10, T113N-R38W***

- 1864** CE Davis & JW Webb Jr were contracted by the United States Government Land Office to perform the Original Public Land Survey in this township. Davis & Webb record in their field notes that they “Set post in mound with trench & pits for corner to secs 2, 3, 10 + 11.”
- 1887** County Survey Record Book A, Page 93, notes “stone” at this corner and dimensions to this corner position.
- 1899-1901** John Norgaard, County Surveyor, notes on County Survey Record Book B, Page 209, “Found stone in center of road set by adjoining landowner in government mound set top of monument level with ground” at this corner position. Norgaard also notes in the title block on the index page at the beginning of County Survey Record Book B, “The Monuments are jasper granite 2 feet long and 6”x6”.
- 1938** Yellow Medicine County Highway Department records in a witness tie book for Echo Township, 5 section corner witness ties but does not note a monument type.
- Unknown** Yellow Medicine County Highway Engineer Road Plans for County Road No. 1, County Project No. S.A.P 87-601-04, Sheet 4, notes stationing of 52+80.4 at this corner position but does not note monument type.
- 2008** Bonnema Surveys, while performing a survey in Section 8, located a section corner monument at this corner position but did not note the monument type.
- Apr. 29, 2025** Leo A. Van Beck, LS 62454, found a PK Nail at this corner position. With the aid of a backhoe a 6.2’ deep hole was dug that covered an area extending 3’ North, 3’ South, 7’ East, and 5’ West of the location of the PK Nail. At a depth of 1.6’ a small nail and ribbon was found directly underneath the PK Nail. At a depth of 5.0’ the original topsoil was found. Another hole measuring 8’ x 11’ was dug to the south of the first hole to a depth of 6.5’. No additional evidence indicating the exact location of this section corner was recovered. The PK Nail set over a Nail wrapped with Ribbon was accepted as the best available evidence of the section corner location.
- Feb. 3, 2026** Leo A. Van Beck, LS 62454, set a Survey Spike with a “46169-46171-62454” stamped aluminum washer at the location of the former PK Nail. The coordinates of this section corner were recorded in the Minnesota Department of Transportation Yellow Medicine County Coordinate System (2011 Adjustment). The latitude and longitude coordinates listed were derived using MNCON software.

Doc# 285952 Fee: \$0.00 2 Pages

Property & Public Services  
Property Records Division  
Yellow Medicine County, Minnesota  
I hereby certify that the within instrument  
was filed on February 23, 2026 at 10:30 AM

Janel Timm, Yellow Medicine County Recorder

*Alvin J Fischer*

# CERTIFICATE OF LOCATION OF GOVERNMENT CORNER

**North Quarter** Corner of Section **11**, Township **113**, Range **38**

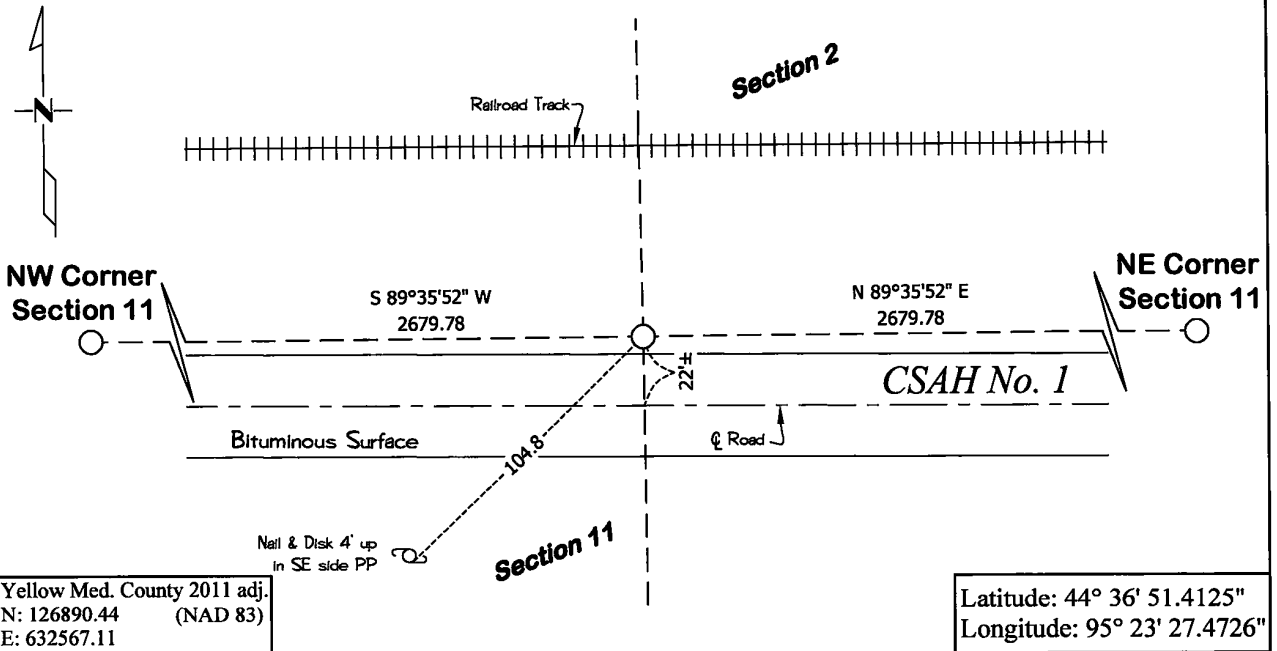
**Fifth** Principal Meridian, State of Minnesota, County of **Yellow Medicine**

At the corner location shown on the sketch:

On April 29, 2025 found a No Existing Monument  
DATE

left monument as found       lowered monument       removed monument (explain)

On Jan. 28, 2026 placed a 5/8"x15" Rebar with a "46169-46171-62454" stamped plastic cap  
DATE



Statement of evidence for this corner location is on back of this page.

I hereby certify that this survey, plan, or report was prepared by me or under my direct supervision and that I am a duly Licensed Land Surveyor under the laws of the state of Minnesota.

Signature

*Leo A. Van Beck*

Date

2-16-2026

Leo A. Van Beck, Minnesota Registered Land Surveyor #62454

## ***STATEMENT OF EVIDENCE***

### ***North Quarter Corner of Section 11, T113N-R38W***

- 1864** CE Davis & JW Webb Jr were contracted by the United States Government Land Office to perform the Original Public Land Survey in this township. Davis & Webb record in their field notes that they “Set post in mound with trench & pits for ¼ sec corner.”
- 1887** County Survey Record Book A, Page 93, notes “Stone Monument” at this corner and dimensions to this corner position.
- April 29, 2025** Leo A. Van Beck, LS 62454, searched with a metal locator and found no existing monument at this corner position. With the aid of a backhoe a 6.2’ deep hole was dug that covered an area extending 3’ North, 3’ South, 6’ East, and 5’ West of a location at the road centerline and mid-distance to the northeast and northwest corners. At a depth of 4.7’ an old roadbed was found. At a depth of 6.2’ the original topsoil was found. We also searched with a metal locator and tile probe at a straight line position which lands on the side slope on the north side of the highway. No additional evidence indicating the exact location of this section corner was recovered.
- Jan. 28, 2026** Leo A. Van Beck, LS 62454, set a 5/8” x 15” Rebar with a “46169-46171-62454” stamped plastic cap midway and online between the northeast and northwest corners of the section. This position matches the distances recorded on CSRB-A, Page 93, within 2.2 feet to the northeast and northwest corners. The coordinates of this section corner were recorded in the Minnesota Department of Transportation Yellow Medicine County Coordinate System (2011 Adjustment). The latitude and longitude coordinates listed were derived using MNCON software.

Property & Public Services  
Property Records Division  
Yellow Medicine County, Minnesota  
I hereby certify that the within instrument  
was filed on February 23, 2026 at 10:30 AM

Janel Timm, Yellow Medicine County Recorder

*Alipiel J Fischer*

# CERTIFICATE OF LOCATION OF GOVERNMENT CORNER

**Northeast** Corner of Section **11**, Township **113**, Range **38**

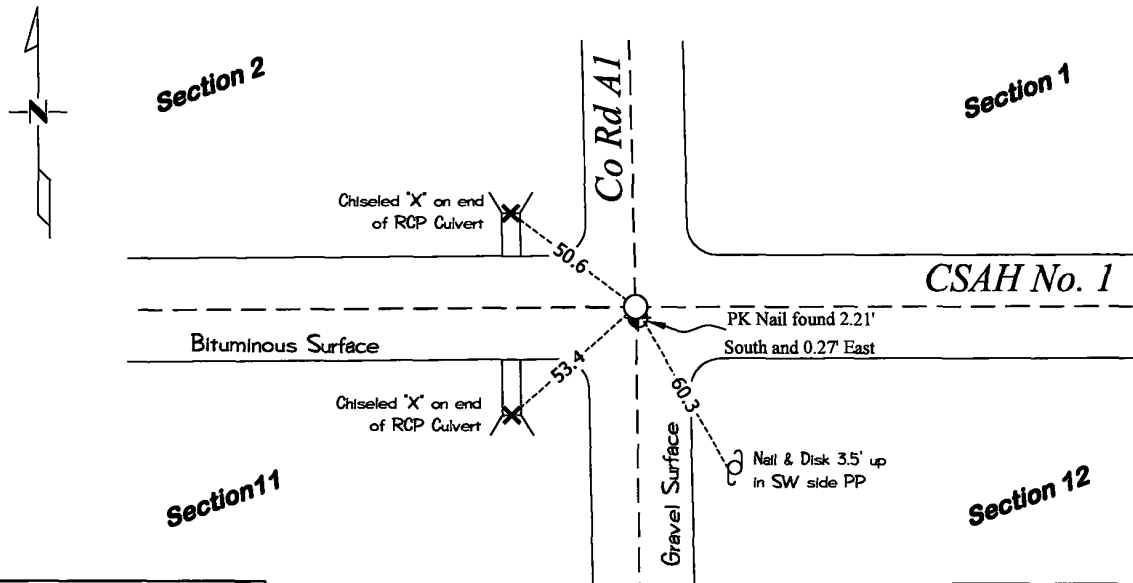
**Fifth** Principal Meridian, State of Minnesota, County of **Yellow Medicine**

At the corner location shown on the sketch:

On April 29, 2025 found a PK Nail over 0.5" Spike, 7"x7" Square Cut Granite Stone  
DATE

left monument as found       lowered monument       removed monument (explain)

On Feb. 3, 2026 placed a Survey Spike with a "46169-46171-62454" stamped aluminum washer  
DATE at the location of the square cut stone



Yellow Med. County 2011 adj.  
N: 126909.25 (NAD 83)  
E: 635246.82

Latitude: 44° 36' 51.4309"  
Longitude: 95° 22' 50.4293"

Statement of evidence for this corner location is on back of this page.

I hereby certify that this survey, plan, or report was prepared by me or under my direct supervision and that I am a duly Licensed Land Surveyor under the laws of the state of Minnesota.

Signature *Leo A. Van Beck* Date 2-16-2026  
Leo A. Van Beck, Minnesota Registered Land Surveyor #62454

## **STATEMENT OF EVIDENCE**

### ***Northeast Corner of Section 11, T113N-R38W***

- 1864** CE Davis & JW Webb Jr were contracted by the United States Government Land Office to perform the Original Public Land Survey in this township. Davis & Webb record in their field notes that they “set post in mound with trench & pits for corner to secs 1, 2, 11&12.”
- 1887** County Survey Record Book A, Page 93, notes “Post” at this corner and dimensions to this corner position.
- 1899-1901** John Norgaard, County Surveyor, notes on County Survey Record Book B, Page 209, “Found stone and stake at the intersection of roads set top of monument 2” above ground” at this corner position. Norgaard also notes in the title block on the index page at the beginning of County Survey Record Book B, “The Monuments are jasper granite 2 feet long and 6”x6”.
- June 11, 1904** John Norgaard, County Surveyor, notes on County Survey Record Book A, Page 187, dimensions to this corner position but does not note a monument type.
- Unknown** Yellow Medicine County Highway Engineer Road Plans for County Road No.1, County Project No S.A.P 87-601-04, Sheet 5, notes highway stationing of 106+40.95 at this corner position but does not note monument type.
- 1958** Yellow Medicine County Highway Department records in a witness tie book for Echo Township, 9 section corner witness ties at this corner position.
- April 29, 2025** Leo A. Van Beck, LS 62454, found a PK Nail at the road surface at this corner position. With the aid of a backhoe a 2.5’ deep hole was dug that covered an area extending 3’ North, 3’ South, 5.5’ East, and 6’ West of the location of the PK Nail. At a depth of 1.7’ a 6” spike with ribbon was found. At a depth of 2.1’ a 7”x7” Square Cut Jasper Stone with wood stakes set on east and west edges was found. This matches the monument set by John Norgaard between 1899 and 1901. The PK Nail at the surface was found 2.21 feet south and 0.27 feet east of the square cut stone.
- Feb. 3, 2026** Leo A. Van Beck, LS 62454, set a Survey Spike with a “46169-46171-62454” stamped aluminum washer at the location of the cut jasper stone. The coordinates of this section corner were recorded in the Minnesota Department of Transportation Yellow Medicine County Coordinate System (2011 Adjustment). The latitude and longitude coordinates listed were derived using MNCON software.

Doc# 285954 Fee: \$0.00 2 Pages

Property & Public Services  
Property Records Division  
Yellow Medicine County, Minnesota  
I hereby certify that the within instrument  
was filed on February 23, 2026 at 10:30 AM

Janel Timm, Yellow Medicine County Recorder

*Aliquid J. Fischer*

# CERTIFICATE OF LOCATION OF GOVERNMENT CORNER

**North Quarter** Corner of Section **12**, Township **113**, Range **38**

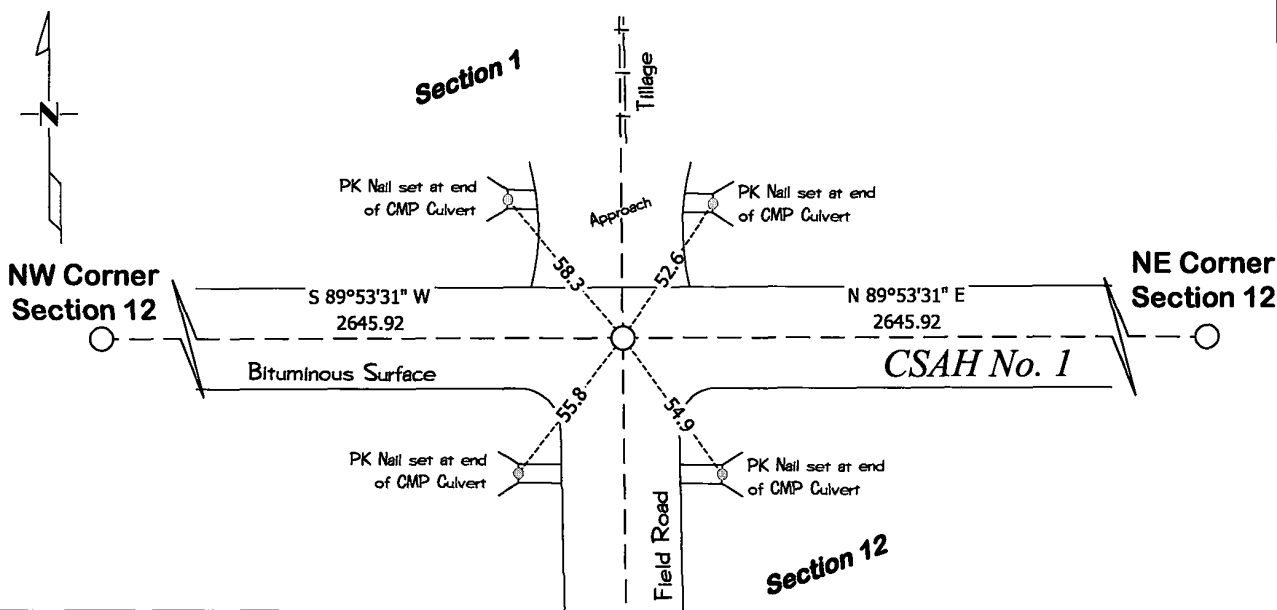
**Fifth** Principal Meridian, State of Minnesota, County of **Yellow Medicine**

At the corner location shown on the sketch:

On April 29, 2025 found a No Existing Monument  
DATE

left monument as found       lowered monument       removed monument (explain)

On Jan. 28, 2026 placed a 5/8"x15" Rebar with a "46169-46171-62454" stamped plastic cap  
DATE



Yellow Med. County 2011 adj.  
N: 126914.25 (NAD 83)  
E: 637892.74

Latitude: 44° 36' 51.3117"  
Longitude: 95° 22' 13.8542"

Statement of evidence for this corner location is on back of this page.

I hereby certify that this survey, plan, or report was prepared by me or under my direct supervision and that I am a duly Licensed Land Surveyor under the laws of the state of Minnesota.

Signature *Leo A. Van Beck* Date 2-16-2026  
Leo A. Van Beck, Minnesota Registered Land Surveyor #62454

## ***STATEMENT OF EVIDENCE***

### ***North Quarter Corner of Section 12, T113N-R38W***

- 1864** CE Davis & JW Webb Jr were contracted by the United States Government Land Office to perform the Original Public Land Survey in this township. Davis and Webb record in their field notes that they “Set post in mound with trench & pits for ¼ section corner.”
- June 11, 1904** John Norgaard, County Surveyor, notes on County Survey Record Book A, Page 187, “S ¼ post located online and at equal distances bet. Sec Cor. Set stone” at this corner and dimensions to this corner position.
- Unknown** Yellow Medicine County Highway Engineer Road Plans for County Road No. 1, County Project No. SAP 87-601-03, Sheet 6, notes “Spike” and lists stationing of 134+16.3 and records 2 section corner witness ties at this section corner location.
- April 29, 2025** Leo A. Van Beck, LS 62454, searched with a metal locator and found no existing monumentation at this corner position. With the aid of a backhoe a 5.4’ deep hole was dug that covered an area extending 3’ North, 3’ South, 6’ East, and 5’ West of the location of the road centerline and occupation lines to the north and south. At a depth of 4.0’ the original topsoil was found. No additional evidence indicating the exact location of this section corner was recovered.
- Jan. 28, 2026** Leo A. Van Beck, LS 62454, set a 5/8” x 15” Rebar with a “46169-46171-62454” stamped plastic cap midway and online between the northeast and northwest corners of this section. This matches notes and dimensions as recorded on County Survey Record Book A, Page 187. The coordinates of this section corner were recorded in the Minnesota Department of Transportation Yellow Medicine County Coordinate System (2011 Adjustment). The latitude and longitude coordinates listed were derived using MNCON software.

Doc# 285955 Fee: \$0.00 2 Pages  
 Property & Public Services  
 Property Records Division  
 Yellow Medicine County, Minnesota  
 I hereby certify that the within instrument  
 was filed on February 23, 2026 at 10:30 AM

Janel Timm, Yellow Medicine County Recorder

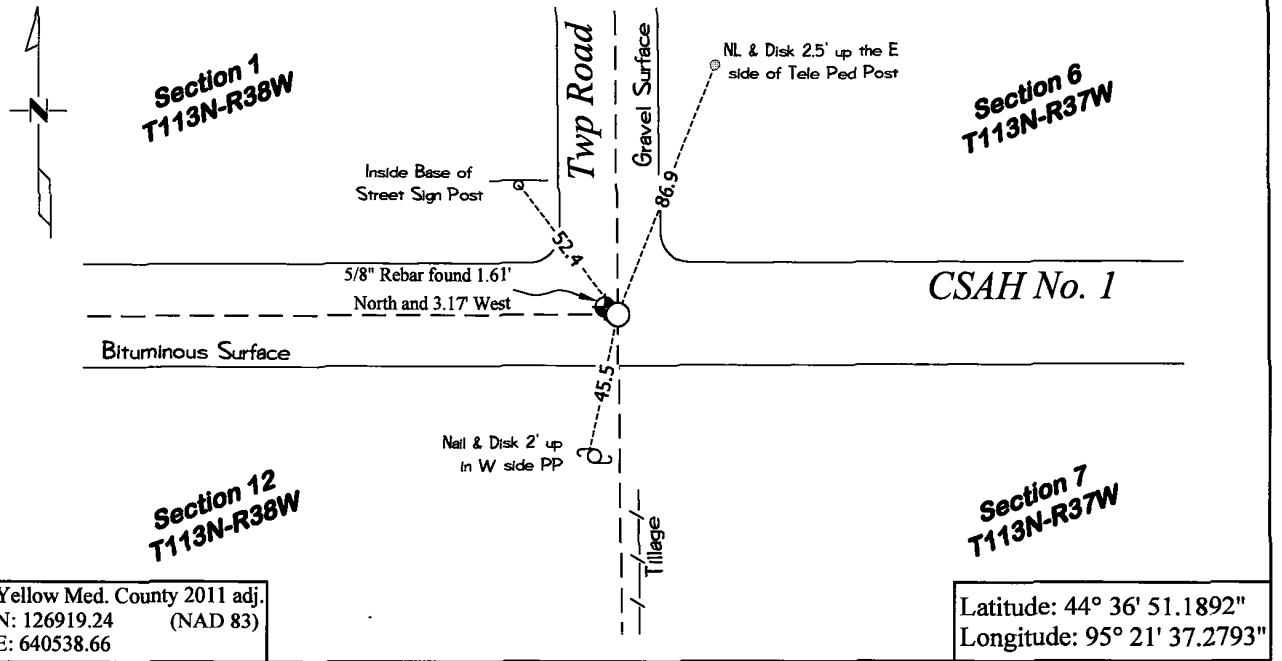
*Alipiel J Fischer*

## CERTIFICATE OF LOCATION OF GOVERNMENT CORNER

**Northeast** Corner of Section **12**, Township **113**, Range **38**  
**Fifth** Principal Meridian, State of Minnesota, County of **Yellow Medicine**

At the corner location shown on the sketch:

- On April 29, 2025 found a 5/8" Rebar, 6"x6" Square Cut Granite Stone  
DATE
- left monument as found       lowered monument       removed monument (explain)
- On Jan. 28, 2026 placed a 5/8"x15" Rebar with a "46169-46171-62454" stamped plastic cap  
DATE at the location of the square cut stone



Yellow Med. County 2011 adj.  
 N: 126919.24 (NAD 83)  
 E: 640538.66

Latitude: 44° 36' 51.1892"  
 Longitude: 95° 21' 37.2793"

Statement of evidence for this corner location is on back of this page.

I hereby certify that this survey, plan, or report was prepared by me or under my direct supervision and that I am a duly Licensed Land Surveyor under the laws of the state of Minnesota.

Signature *Leo A. Van Beck* Date 2-16-2026  
 Leo A. Van Beck, Minnesota Registered Land Surveyor #62454

## ***STATEMENT OF EVIDENCE***

### ***Northeast Corner of Section 12, T113N-R38W***

- 1857** E.N. Darling was contracted by the United States Government Land Office to perform the Original Public Land Survey of this township line. Darling records in his field notes "Set post corner to Secs 1, 6, 7, & 12 deposited ½ pint charcoal built mound of earth & dug trench per instructions."
- 1899-1901** John Norgaard, County Surveyor, notes on County Survey Record Book B, Page 206, "Found stone set by Bigelow county surveyor of Redwood. Set top of monument 2" above ground" at this corner. Norgaard also notes in his title block at the beginning of CSRB-B, "The Monuments are jasper granite 2 feet long and 6"x6"."
- June 11, 1904** John Norgaard, County Surveyor, notes on County Survey Record Book B, Page 206, dimensions to this corner position but does not note what type of monument was found.
- Unknown** Yellow Medicine County Highway Engineer Road Plans for County Road No. 1, County Project No. S.A.P 87-601, Sheet 6, notes "SECTION CORNER" and notes stationing of 159+28.20 at this corner
- Unknown** Yellow Medicine County Highway Department records in a tie book for Echo Township, 2 section corner witness ties.
- June 1985** Redwood County Highway Highway Department notes in a tie book for Kintire Township, "R.R. SPK TO SURF" at this corner position and recorded 3 section corner witness ties.
- Unknown** Yellow Medicine County Highway Engineer Field Book for County Road No.1, County Project No. S.A.P 87-601-02,03,04,05 and S.P.A 87-623-01, notes "SPIKE" and highway stationing at this corner position and established 3 section corner witness ties.
- April 29, 2025** Leo A. Van Beck, LS 62454, found a 5/8" Rebar 3" below the road surface at this corner position. With the aid of a backhoe a 3.8' deep hole was dug that covered an area extending 5' North, 3' South, 6' East, and 6' West of the location of the 5/8" Rebar. At a depth of 3.2' a 6"x6" Square Cut Jasper Stone was found. At a depth of 3.4' the original topsoil was found. This matches the monument set by John Norgaard between 1899 and 1901. The 5/8" Rebar found at the surface was 1.61 feet north and 3.17 feet westerly of the square cut stone.
- Jan. 28, 2026** Leo A. Van Beck, LS 62454, set a 5/8" x 15" Rebar with a "46169-46171-62454" stamped plastic cap at the location of the square cut stone. The coordinates of this section corner were recorded in the Minnesota Department of Transportation Yellow Medicine County Coordinate System (2011 Adjustment). The latitude and longitude coordinates listed were derived using MNCON software.