

CERTIFICATE OF LOCATION OF GOVERNMENT CORNER

NORTHEAST Corner of Section 2, Township 113, Range 39, 5TH P.M.

STATE OF MINNESOTA, County of YELLOW MEDICINE

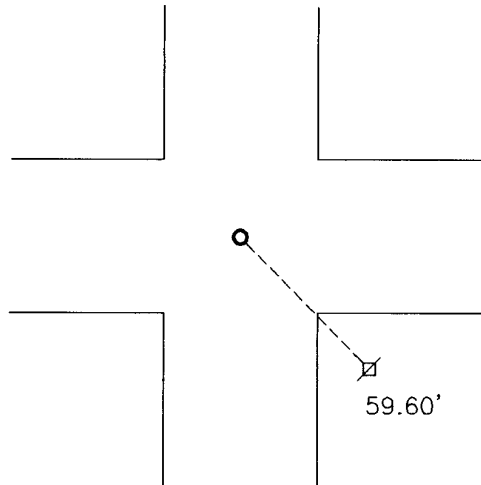
At the corner location shown on the sketch:

On 05-14-2010 found a BRIDGE SPIKE
DATE

left monument as found, lowered monument, removed monument (explain)

On 05-14-2010 placed a 5/8" IRON WITH SEAL #43844
DATE

SKETCH OF REFERENCE TIES



Minnesota State Plane Coordinate
System Yellow Medicine County Datum
NAD83 (1996)

N: 132175.550
E: 603305.178

Nail and survey marker in utility pole SE 59.60'

Statement of evidence relative to this corner location is on back of page.

I hereby certify that this document and the data contained herein was prepared by me or under my direct supervision.


SIGNATURE

1/6/11
DATE

Registration No. 43844

Land Surveyor, Professional Engineer
 County Surveyor, County Engineer

OFFICE OF THE COUNTY RECORDER

County of _____

I hereby certify that this document was filed in the Co. Recorders office at _____ M on the _____ day of _____ A.D. 20 _____

County Recorder _____

By _____, Deputy

DOCUMENT NO. _____

Statement of Evidence

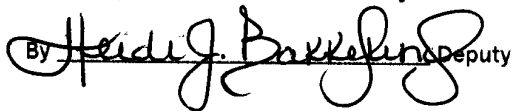
In 1858, W. J. Neeley did the original survey of the north line of the township.

On May 14, 2010, Bueltel-Moseng Land Surveying found a county bridge spike. We removed the spike and replaced it with a 5/8" iron with seal #43844.

Doc# 252033 Fee: \$0.00 2 Pages

Office of County Recorder
Yellow Medicine County, Minnesota
I hereby certify that the within instrument
was filed on January 13, 2011 at 8:05 AM

Kay Zempel, Yellow Medicine County Recorder

By  Deputy

W/C

Bueltel-Moseng Land Surveying
P.O. Box 32
Marshall, MN 56258

CERTIFICATE OF LOCATION OF GOVERNMENT CORNER

EAST QUARTER Corner of Section 2, Township 113, Range 39, 5TH P.M.

STATE OF MINNESOTA, County of YELLOW MEDICINE

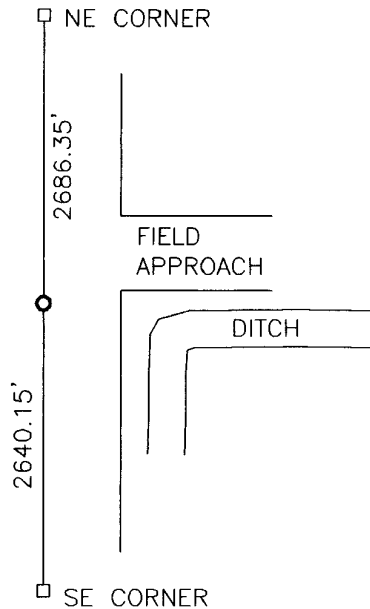
At the corner location shown on the sketch:

On _____ found a _____
DATE

left monument as found, lowered monument, removed monument (explain)

On 05-14-2010 placed a 5/8" IRON WITH SEAL #43844
DATE

SKETCH OF REFERENCE TIES



Minnesota State Plane Coordinate
System Yellow Medicine County Datum
NAD83 (1996)

N: 129489.212
E: 603311.877

Statement of evidence relative to this corner location is on back of page.

I hereby certify that this document and the data contained herein was prepared by me or under my direct supervision.

James B. ...
SIGNATURE

1/6/11
DATE

Registration No. 43844

Land Surveyor, Professional Engineer
 County Surveyor, County Engineer

OFFICE OF THE COUNTY RECORDER
County of _____

I hereby certify that this document was filed in the Co. Recorders office at _____ .M on the _____ day of _____ A.D. 20 _____

County Recorder _____

By _____, Deputy

DOCUMENT NO. _____

Statement of Evidence

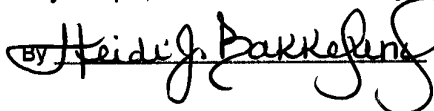
In 1864, Chas E. Davis and J. W. Webb, Jr. did the original subdivision of the township.

On May 14, 2010, Bueltel-Moseng Land Surveying set a 5/8" iron with seal #43844 proportionate distance and on line between the section corners. The corner is in line with the north edge of the ditch to the east.

Doc# 252032 Fee: \$0.00 2 Pages

Office of County Recorder
Yellow Medicine County, Minnesota
I hereby certify that the within instrument
was filed on January 13, 2011 at 8:00 AM

Kay Zempel, Yellow Medicine County Recorder

By  Deputy

N/C

Bueltel-Moseng Land Surveying
P.O. Box 32
Marshall, MN 56258

CERTIFICATE OF LOCATION OF GOVERNMENT CORNER

Corner to Section 2 Township 113 N Range 39 W No. _____

STATE OF MINNESOTA,

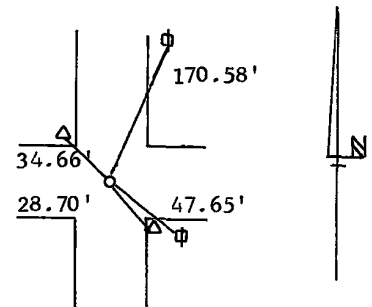
County of Yellow Medicine S.S.

I hereby certify that on the 19th day of August 1976,
 that I, Lyle E. Moseng, a Registered Land Surveyor, ~~County Surveyor,~~
~~County Highway Engineer,~~ ^{SET} found the Northeast corner of Section 2
~~which was evidenced by~~ see back

_____ and I further certify that to perpetuate the
 location of such corner I did, at the exact location thereof, place a permanent
 marker consisting of #4 Rebar w/seal.

I further certify that I established 4 references or witness monuments consist-
 ing of two yeild signs & two power poles which reference or witness monuments are
 located in the manner following.

Dh nail & bc in PP	NE 170.58 ft
Dh nail & bc in PP	SE 47.65 ft
Center of steel post for yeild sign	SE 28.70 ft
Center of steel post for yeild sign	NW 34.66 ft



Dated at Marshall, Minnesota, this 27th day of May, 1980.

182999
 OFFICE OF THE REGISTER OF DEEDS

County of Yellow Medicine

Lyle E. Moseng
~~County Surveyor, County Highway Engineer,~~
 Registered Land Surveyor No. 11943

I hereby certify that the within instrument was filed in this office for
 record on the 16 day of November A.D., 1983, at 1:45 o'clock P.M.

Norman J. Opdahl, County Recorder

Register of Deeds

by Kay Nordahl Deputy

We dug a hole 3'x3'x3' deep and found nothing; we set the corner on line between the NE cor sec 1 & the NE cor of sec 3 & in the center line of roads running north & south.

CERTIFICATE OF LOCATION OF GOVERNMENT CORNER

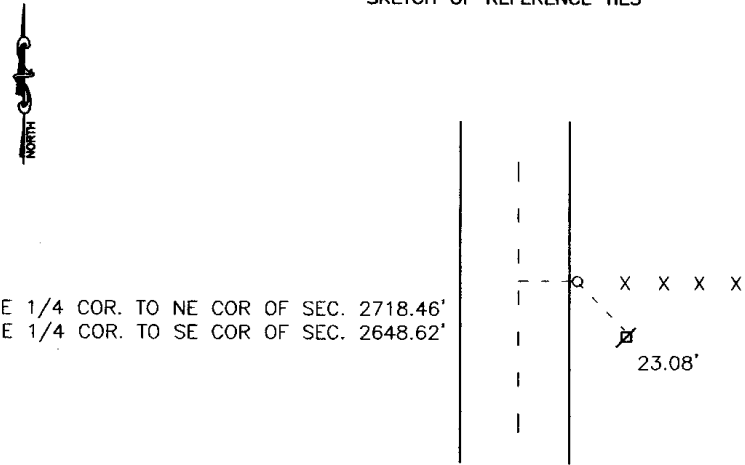
East Quarter _____ Corner of Section 3, Township 113, Range 39, 5th P.M.

STATE OF MINNESOTA, County of Yellow Medicine

At the corner location shown on the sketch:

- On _____ found a _____
DATE
- left monument as found, lowered monument, removed monument (explain)
- On 12-26-01 placed a 1" pipe w/seal #11943
DATE

SKETCH OF REFERENCE TIES



Nail and Seal powerpole East Southeast 23.08'
To the centerline of the road 10.08'

Statement of evidence relative to this corner location is on back of page.

I hereby certify that this document and the data contained herein was prepared by me or under my direct supervision.

John E. Moseng 1-25-05
SIGNATURE DATE

Registration No. 11943
 Land Surveyor, Professional Engineer
 County Surveyor, County Engineer

OFFICE OF THE COUNTY RECORDER

County of _____
I hereby certify that this document was filed in the Co. Recorders office at _____ M on the _____ day of _____ A.D. 19 _____

County Recorder _____
By _____, Deputy
DOCUMENT NO. _____

Statement of Evidence

Original corner set September 3, 1864 by C. Edie Davise, 40 chains from southeast corner. Total mile measured 80.50 chains.

On July 26, 2001 Moseng Land Surveying, tried setting corner by the single proportionate method, but it fell 18 feet north of the existing fence line. We set a 1" pipe with a seal #11943 on line with section corners in line with fence to the East. The corner falls on the shoulder of the road.

Doc# 237125
Fee: \$.00 2 Pages
Office of County Recorder,
Yellow Medicine County, Minnesota
I hereby certify that the within
instrument was filed on
January 25, 2005 at 09:15 AM

Kay Zempel, Yellow Medicine County Recorder
BY Joel Robuk Deputy

CERTIFICATE OF LOCATION OF GOVERNMENT CORNER

Corner to Section 3 Township 113 N Range 39, W No. _____

STATE OF MINNESOTA,

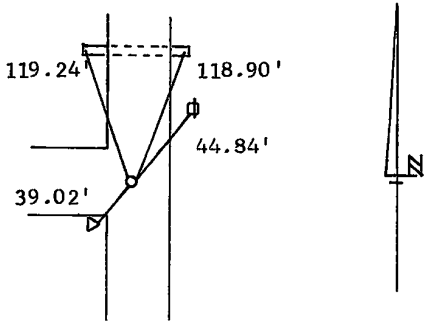
County of Yellow Medicine S.S.

I hereby certify that on the 19th day of August 1976,
 that I, Lyle E. Moseng, a Registered Land Surveyor, ~~County Surveyor,~~
~~County Highway Engineer,~~ ^{SET} found the Northeast corner of Section 3
~~which was evidenced by~~ ~~XXXXXX~~ with ties from Yellow Medicine Co.

Hwy Dept we dug and found nothing and I further certify that to perpetuate the
 location of such corner I did, at the exact location thereof, place a permanent
 marker consisting of #4 rebar w/seal.

I further certify that I established 4 references or witness monuments consist-
 ing of a power pole, a yeild sign & both which reference or witness monuments are
 ends CMP
 located in the manner following.

- | | |
|-------------------------------------|--------------|
| East end of a 18" CMP | NE 118.90 ft |
| Dh nail & bc in PP | NE 44.84 ft |
| Center of steel post for yeild sign | SW 39.02 ft |
| West end of a 18" CMP | NW 119.24 ft |



Dated at Marshall, Minnesota, this 27th day of May, 1980.

Lyle E. Moseng
~~County Surveyor, County Highway Engineer,~~
 Registered Land Surveyor No. 11943

183000
 OFFICE OF THE REGISTER OF DEEDS
 County of Yellow Medicine

I hereby certify that the within instrument was filed in this office for
 record on the 16 day of November A.D., 1983, at 1:50 o'clock P.M.

Norman J. Opdahl, County Recorder
 Register of Deeds
 by Ray Opdahl Deputy

CERTIFICATE OF LOCATION OF GOVERNMENT CORNER

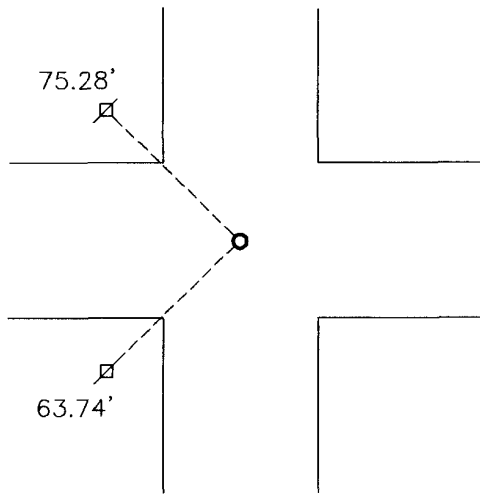
NORTHEAST Corner of Section 7, Township 113, Range 39, 5TH P.M.

STATE OF MINNESOTA, County of YELLOW MEDICINE

At the corner location shown on the sketch:

- On _____ found a _____
DATE
- left monument as found, lowered monument, removed monument (explain)
- On 11-22-2010 placed a SURVEY SPIKE WITH SEAL #43844.
DATE

SKETCH OF REFERENCE TIES



Minnesota State Plane Coordinate
 System Yellow Medicine County Datum
 NAD83 (1996)
 N: 127057.815
 E: 582000.922

Nail and seal in utility pole SW 63.74'
 Nail and bottle cap in utility pole NW 75.28'

Statement of evidence relative to this corner location is on back of page.

I hereby certify that this document and the data contained herein was prepared by me or under my direct supervision.

David Benke 1/10/11
 SIGNATURE DATE

Registration No. 43844

- Land Surveyor, Professional Engineer
- County Surveyor, County Engineer

OFFICE OF THE COUNTY RECORDER
County of _____

I hereby certify that this document was filed in the Co. Recorders office at _____ .M on the _____ day of _____ A.D. 20 _____

County Recorder _____

By _____, Deputy

DOCUMENT NO. _____

Statement of Evidence

In 1864, Chas E. Davis & J. W. Webb, Jr. did the original subdivision of the township.

On July 8, 1890, Jonah Peterman, the County Surveyor, found the corner while doing a survey of Sections 6 and 7.

In 1929, John Norgaard found the corner using ties from the road engineer's office.

The Yellow Medicine County Highway Department did a total grading project in the area. However they did record ties to the corner as follows:

Nail and seal in power pole Southwest 63.74'

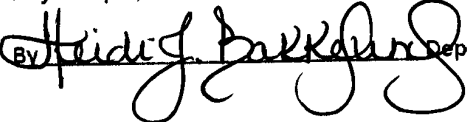
Nail and bottle cap in power pole Northwest 75.28'

On November 22, 2010, Bueltel-Moseng Land Surveying set a survey spike with seal #43844 using the ties recorded by the county.

Doc# 252036 Fee: \$0.00 2 Pages

Office of County Recorder
Yellow Medicine County, Minnesota
I hereby certify that the within instrument
was filed on January 13, 2011 at 8:20 AM

Kay Zempel, Yellow Medicine County Recorder

By  Deputy

N/C

Bueltel-Moseng Land Surveying
P.O. Box 32
Marshall, MN 56258

CERTIFICATE OF LOCATION OF GOVERNMENT CORNER

EAST QUARTER Corner of Section 7, Township 113, Range 39, 5TH P.M.

STATE OF MINNESOTA, County of YELLOW MEDICINE

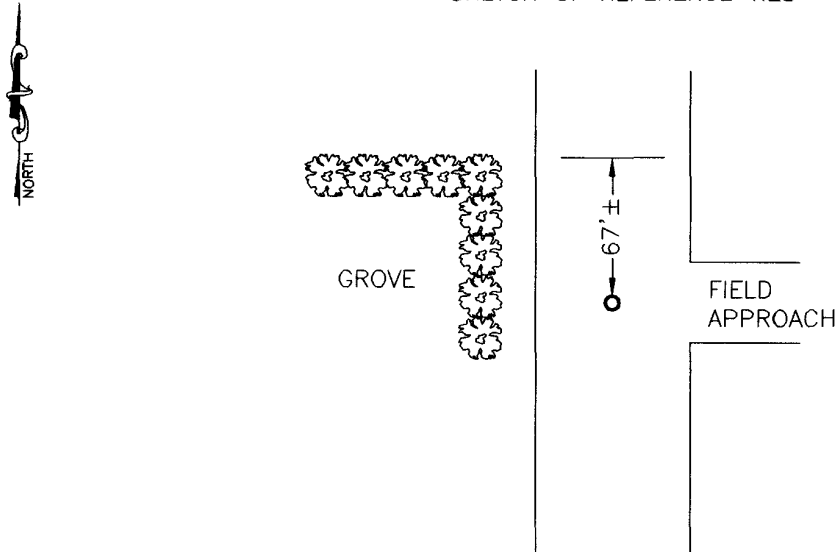
At the corner location shown on the sketch:

On _____ found a _____
DATE

left monument as found, lowered monument, removed monument (explain)

On 11-22-2010 placed a SURVEY SPIKE WITH SEAL #43844
DATE

SKETCH OF REFERENCE TIES



Minnesota State Plane Coordinate
System Yellow Medicine County Datum
NAD83 (1996)

N: 124402.243
E: 582018.422

Statement of evidence relative to this corner location is on back of page.

I hereby certify that this document and the data contained herein was prepared by me or under my direct supervision.

[Signature] 1/10/11
SIGNATURE DATE

Registration No. 43844

Land Surveyor, Professional Engineer
 County Surveyor, County Engineer

OFFICE OF THE COUNTY RECORDER
County of _____

I hereby certify that this document was filed in the Co. Recorders office at _____ .M on the _____ day of _____ A.D. 20 _____

County Recorder _____

By _____, Deputy

DOCUMENT NO. _____

Statement of Evidence

In 1864, Chas E. Davis & J. W. Webb, Jr. did the original subdivision of the township.
On July 8, 1890, Johan Peterman, the County Surveyor, found the original government post.
In 1903, John Norgaard set a stake on line and equal distance between section corners.
In 1929, John Norgaard set a stake on line and equal distance between section corners.
On November 22, 2010, Bueltel-Moseng Land Surveying set a 5/8" iron with seal #43844 midway and on line between the section corners.

Doc# 252035 Fee: \$0.00 2 Pages

Office of County Recorder
Yellow Medicine County, Minnesota
I hereby certify that the within instrument
was filed on January 13, 2011 at 8:15 AM

Kay Zempel, Yellow Medicine County Recorder

By  Deputy

n/c

Bueltel-Moseng Land Surveying
P.O. Box 32
Marshall, MN 56258

CERTIFICATE OF LOCATION OF GOVERNMENT CORNER

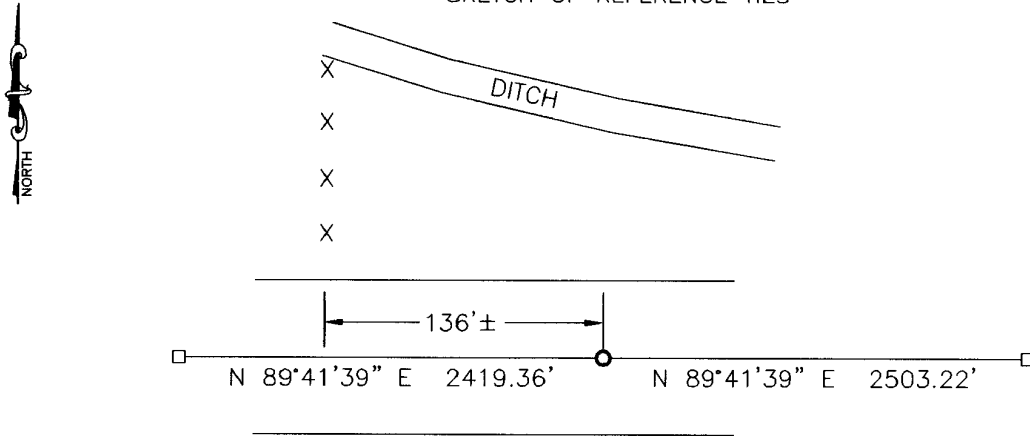
NORTH QUARTER Corner of Section 7, Township 113, Range 39, 5TH P.M.

STATE OF MINNESOTA, County of YELLOW MEDICINE

At the corner location shown on the sketch:

- On _____ found a _____
DATE
- left monument as found, lowered monument, removed monument (explain)
- On 11-22-2010 placed a SURVEY SPIKE WITH SEAL #43844.
DATE

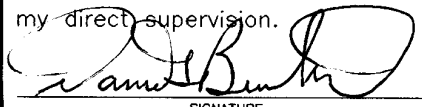
SKETCH OF REFERENCE TIES



Minnesota State Plane Coordinate
 System Yellow Medicine County Datum
 NAD83 (1996)
 N: 127044.449
 E: 579497.738

Statement of evidence relative to this corner location is on back of page.

I hereby certify that this document and the data contained herein was prepared by me or under my direct supervision.


 SIGNATURE
 1/10/11
 DATE

Registration No. 43844

- Land Surveyor, Professional Engineer
- County Surveyor, County Engineer

OFFICE OF THE COUNTY RECORDER

County of _____

I hereby certify that this document was filed in the Co. Recorders office at _____ .M on the _____ day of _____ A.D. 20 _____

County Recorder _____

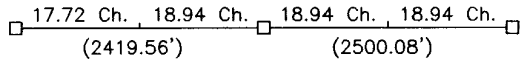
By _____, Deputy

DOCUMENT NO. _____

Statement of Evidence

In 1864, Chas E. Davis & J. W. Webb, Jr. did the original subdivision of the township.

In 1890, Johan Peterman, the County Surveyor, established the corner as follows:

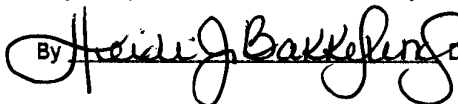


On November 22, 2010, Bueltel-Moseng Land Surveying set a survey spike with seal #43844 on line and single proportionate distances between the section corners.

Doc# 252034 Fee: \$0.00 2 Pages

Office of County Recorder
Yellow Medicine County, Minnesota
I hereby certify that the within instrument
was filed on January 13, 2011 at 8:10 AM

Kay Zempel, Yellow Medicine County Recorder

By  Deputy

N/C

Bueltel-Moseng Land Surveying
P.O. Box 32
Marshall, MN 56258

CERTIFICATE OF LOCATION OF GOVERNMENT CORNER

NORTHEAST Corner of Section 8, Township 113, Range 39, 5TH P.M.

STATE OF MINNESOTA, County of YELLOW MEDICINE

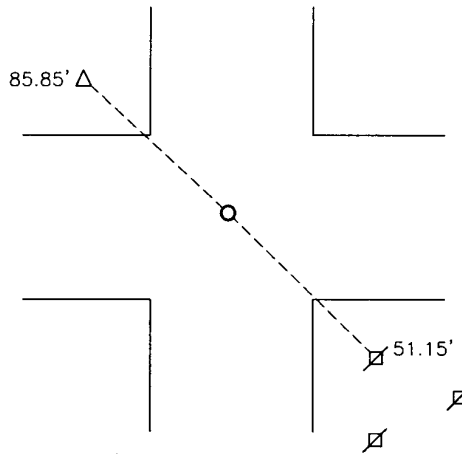
At the corner location shown on the sketch:

On 4/8/15 found a 12" bridge spike
DATE

left monument as found, lowered monument, removed monument (explain)

On 4/8/15 placed a 5/8" iron with seal #43844
DATE

SKETCH OF REFERENCE TIES




Minnesota State Plane Coordinate
System Yellow Medicine County Datum
NAD83 (1996)

N: 127043.017
E: 587436.130

Nail and survey marker in utility pole SE 51.15'
Nail and survey marker in pedestal post NW 85.85'

Statement of evidence relative to this corner location is on back of page.

I hereby certify that this document and the data contained herein was prepared by me or under my direct supervision.


SIGNATURE

3/2/16
DATE

Registration No. 43844

Land Surveyor, Professional Engineer
 County Surveyor, County Engineer

OFFICE OF THE COUNTY RECORDER

County of _____

I hereby certify that this document was filed in the Co. Recorders office at _____ .M on the _____ day of _____ A.D. 20 _____

County Recorder _____

By _____, Deputy

DOCUMENT NO. _____

Statement of Evidence

In September, Chas E. Davis and J.W. Webb Jr. did the original subdivision of the township.

On August 22, 1955, W. Bix Griebler, found a wooden fence post 5± below the surface at the corner. He stated that his distances agreed with a survey that John Norgaard did in 1903.

On April 8, 2015, Bueltel-Moseng Land Surveying found 12 inch bridge spike at the corner. We removed the bridge spike and set a 5/8" iron with seal #43844 in place of bridge spike.

Doc# 263806 Fee: \$0.00 2 Pages

Property & Public Services

Property Records Division

Yellow Medicine County, Minnesota

I hereby certify that the within instrument
was filed on March 28, 2016 at 10:55 AM

Janel Timm, Yellow Medicine County Recorder

By Debra Blood Deputy

CERTIFICATE OF LOCATION OF GOVERNMENT CORNER

EAST QUARTER Corner of Section 8, Township 113, Range 39, 5TH P.M.

STATE OF MINNESOTA, County of YELLOW MEDICINE

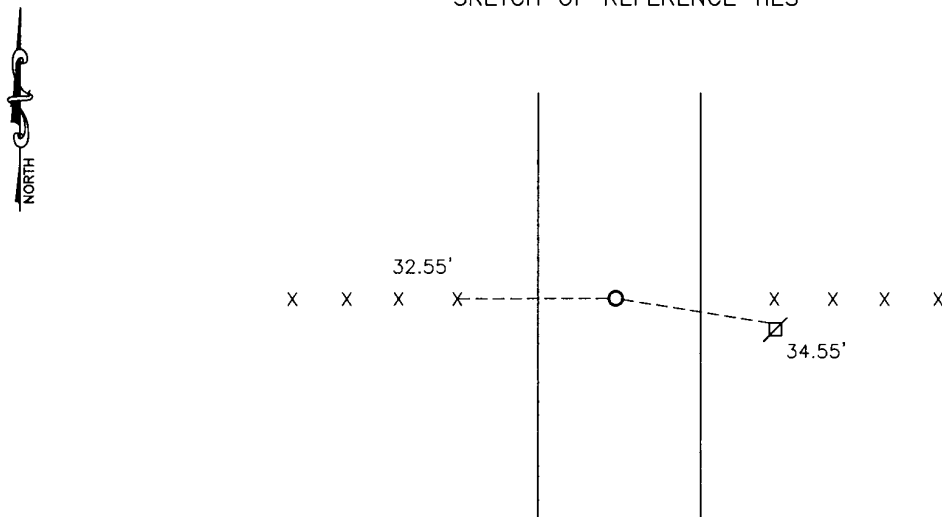
At the corner location shown on the sketch:

On 4/8/15 found a 3/8" iron over stone

left monument as found, lowered monument, removed monument (explain)

On 4/8/15 placed a 5/8" iron with seal #43844

SKETCH OF REFERENCE TIES



Minnesota State Plane Coordinate
System Yellow Medicine County Datum
NAD83 (1996)

N: 124370.014
E: 587431.665

Nail and survey marker in utility pole ESE 34.55'
Nail and survey marker in corner fence post West 32.55'

Statement of evidence relative to this corner location is on back of page.

I hereby certify that this document and the data contained herein was prepared by me or under my direct supervision.

[Signature]
SIGNATURE

3/2/16
DATE

Registration No. 43844

Land Surveyor, Professional Engineer
 County Surveyor, County Engineer

OFFICE OF THE COUNTY RECORDER

County of _____

I hereby certify that this document was filed in the Co. Recorders office at _____ .M on the _____ day of _____ A.D. 20 _____

County Recorder _____

By _____, Deputy

DOCUMENT NO. _____

Statement of Evidence

In September, 1864, Chas E Davis and J.W. Webb Jr. did the original subdivision of the township.

In 1903, John Norgaard, County Surveyor, recorded a stone at the corner.

On August 22, 1955, W. Bix Griebler, found a stone at the corner.

On April 8, 2015, Bueltel-Moseng Land Surveying found a 3/8" iron over a stone. We removed the 3/8" iron and set 5/8" iron with seal #43844 in place of iron. Stone is 1'± below the road surface and in center of road.

Doc# 263805 Fee: \$0.00 2 Pages

Property & Public Services
Property Records Division
Yellow Medicine County, Minnesota

I hereby certify that the within instrument
was filed on March 28, 2016 at 10:50 AM

Janel Timm, Yellow Medicine County Recorder

By Debra Blood Deputy

CERTIFICATE OF LOCATION OF GOVERNMENT CORNER

NORTH QUARTER Corner of Section 8, Township 113, Range 39, 5TH P.M.

STATE OF MINNESOTA, County of YELLOW MEDICINE

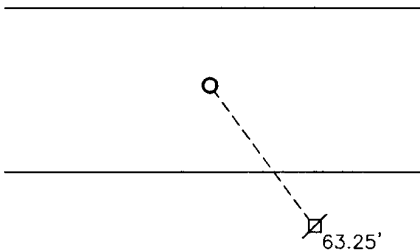
At the corner location shown on the sketch:

On _____ found a _____
DATE

left monument as found, lowered monument, removed monument (explain)

On 4/8/15 placed a survey spike with seal #43844
DATE

SKETCH OF REFERENCE TIES



Minnesota State Plane Coordinate
System Yellow Medicine County Datum
NAD83 (1996)
N: 127057.186
E: 584656.098

Nail and survey marker in utility pole SE 63.25'

Statement of evidence relative to this corner location is on back of page.

I hereby certify that this document and the data contained herein was prepared by me or under my direct supervision

[Signature] 3/3/16
SIGNATURE DATE

Registration No. 43844

Land Surveyor, Professional Engineer
 County Surveyor, County Engineer

OFFICE OF THE COUNTY RECORDER
County of _____

I hereby certify that this document was filed in the Co. Recorders office at _____ .M on the _____ day of _____ A.D. 20 _____

County Recorder _____

By _____, Deputy

DOCUMENT NO. _____

Statement of Evidence

In September, 1864, Chas E. Davis and J.W. Webb Jr. did the original subdivision of the township.

In 1903, John Norgaard, County Surveyor, recorded a stone in the center of the road.

On September 1, 1955, W. Bix Griebler, did not find stone, but noted fence line to the south agreed with 1903 survey by Norgaard.

On April 8, 2015, Bueltel-Moseng Land Surveying set a survey spike with seal #43844 in the center of the road and using proportionate distances based on John Norgaard's 1903 survey.

Doc# 263804 Fee: \$0.00 2 Pages

Property & Public Services

Property Records Division

Yellow Medicine County, Minnesota

I hereby certify that the within instrument
was filed on March 28, 2016 at 10:45 AM

Janel Timm, Yellow Medicine County Recorder

By Debra Blood Deputy

CERTIFICATE OF LOCATION OF GOVERNMENT CORNER

NORTHEAST Corner of Section 10, Township 113, Range 39, 5TH P.M.

STATE OF MINNESOTA, County of YELLOW MEDICINE

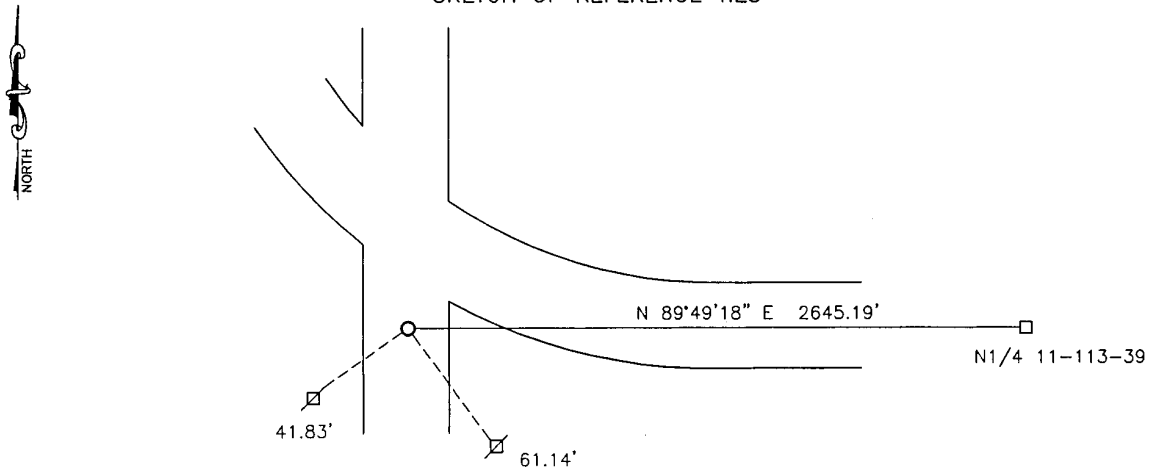
At the corner location shown on the sketch:

On 06-14-2017 found a LARGE BRIDGE SPIKE
DATE

left monument as found, lowered monument, removed monument (explain)

On 06-14-2017 placed a 5/8" IRON WITH SEAL #43844.
DATE

SKETCH OF REFERENCE TIES



Minnesota State Plane Coordinate
System Yellow Medicine County Datum
NAD83 (1996)

Nail and bottle cap in utility pole SW 41.83'
Nail and bottle cap in utility pole SE 61.14'

N: 126832.653
E: 598027.924

Statement of evidence relative to this corner location is on back of page.

I hereby certify that this document and the data contained herein was prepared by me or under my direct supervision.

[Signature] 3/8/18
SIGNATURE DATE

Registration No. 43844

Land Surveyor, Professional Engineer
 County Surveyor, County Engineer

Doc# 268087 Fee: \$0.00 2 Pages

Property & Public Services
Property Records Division
Yellow Medicine County, Minnesota
I hereby certify that the within instrument was filed on March 28, 2018 at 9:40 AM

Janel Timm, Yellow Medicine County Recorder

By [Signature] Deputy

Statement of Evidence

In 1864, Chas E. Davis and J.W. Webb, Jr. did the original subdivision of the township.

The Yellow Medicine County Highway Department found a pin at the corner.

On June 14, 2017, Bueltel-Moseng Land Surveying found a large bridge spike at the corner. We removed it and set a 5/8" iron with seal #43844 in its place.

CERTIFICATE OF LOCATION OF GOVERNMENT CORNER

NORTH QUARTER Corner of Section 11, Township 113, Range 39, 5TH P.M.

STATE OF MINNESOTA, County of YELLOW MEDICINE

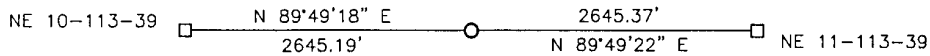
At the corner location shown on the sketch:

On 06-14-2017 found a PK NAIL
DATE

left monument as found, lowered monument, removed monument (explain)

On 06-14-2017 placed a SURVEY SPIKE WITH SEAL #43844.
DATE

SKETCH OF REFERENCE TIES



Minnesota State Plane Coordinate
 System Yellow Medicine County Datum
 NAD83 (1996)

N: 126840.884
 E: 600673.102

Statement of evidence relative to this corner location is on back of page.

I hereby certify that this document and the data contained herein was prepared by me or under my direct supervision.

[Signature] 3/8/18
SIGNATURE DATE

Registration No. 43844

Land Surveyor, Professional Engineer
 County Surveyor, County Engineer

Doc# 268088 Fee: \$0.00 2 Pages

Property & Public Services
 Property Records Division
 Yellow Medicine County, Minnesota
 I hereby certify that the within instrument was filed on March 28, 2018 at 9:45 AM

Janel Timm, Yellow Medicine County Recorder

By [Signature] Deputy

Statement of Evidence

In 1864, Chas E. Davis and J.W. Webb, Jr. did the original subdivision of the township.

On June 14, 2017, Bueltel-Moseng Land Surveying found a PK nail at the corner. We removed it and set a survey spike with seal #43844 in its place.

CERTIFICATE OF LOCATION OF GOVERNMENT CORNER

NORTHEAST Corner of Section 11, Township 113, Range 39, 5TH P.M.

STATE OF MINNESOTA, County of YELLOW MEDICINE

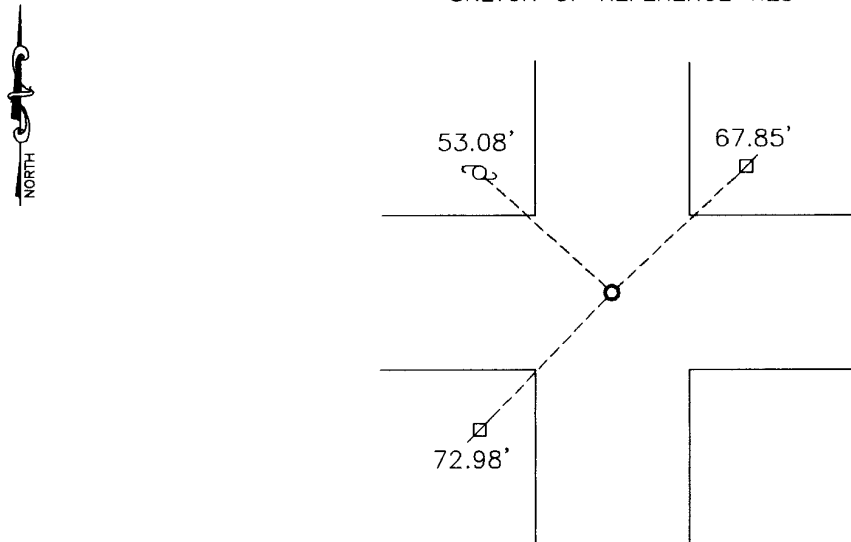
At the corner location shown on the sketch:

On 05-14-2010 found a BRIDGE SPIKE
DATE

left monument as found, lowered monument, removed monument (explain)

On 05-14-2010 placed a 5/8" IRON WITH SEAL #43844
DATE

SKETCH OF REFERENCE TIES



Minnesota State Plane Coordinate System Yellow Medicine County Datum NAD83 (1996)

N: 126849.071
E: 603318.456

Nail and survey marker in utility pole NE 67.85'
Top center of water valve NW 53.08'
Nail and bottle cap in utility pole SW 72.98'

Statement of evidence relative to this corner location is on back of page.

I hereby certify that this document and the data contained herein was prepared by me or under my direct supervision.

[Signature] 1/6/11
SIGNATURE DATE

Registration No. 43844

Land Surveyor, Professional Engineer
 County Surveyor, County Engineer

OFFICE OF THE COUNTY RECORDER
County of _____

I hereby certify that this document was filed in the Co. Recorders office at _____ .M on the _____ day of _____ A.D. 20 _____

County Recorder _____

By _____, Deputy

DOCUMENT NO. _____

Statement of Evidence

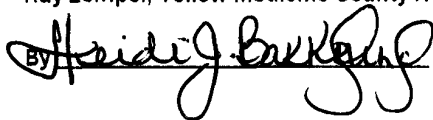
In 1864, Chas E. Davis and J. W. Webb, Jr. did the original subdivision of the township.

On May 14, 2010, Bueltel-Moseng Land Surveying found a county bridge spike at the corner. We placed a 5/8" iron with seal #43844 over the spike.

Doc# 252037 Fee: \$0.00 2 Pages

Office of County Recorder
Yellow Medicine County, Minnesota
I hereby certify that the within instrument
was filed on January 13, 2011 at 8:25 AM

Kay Zempel, Yellow Medicine County Recorder

By  Deputy

N/C

Bueltel-Moseng Land Surveying
P.O. Box 32
Marshall, MN 56258

CERTIFICATE OF LOCATION OF GOVERNMENT CORNER

EAST QUARTER Corner of Section 14, Township 113, Range 39, 5TH P.M.

STATE OF MINNESOTA, County of YELLOW MEDICINE

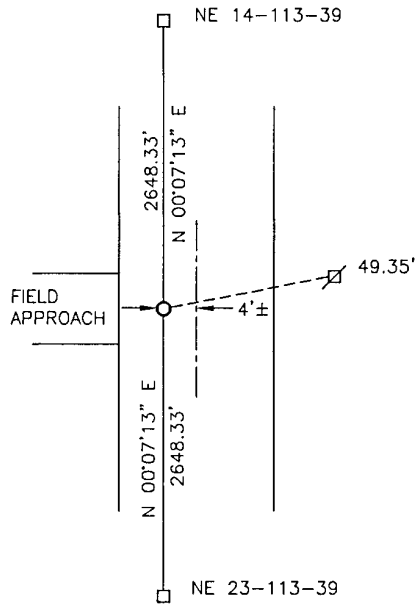
At the corner location shown on the sketch:

On _____ found a _____

left monument as found, lowered monument, removed monument (explain)

On 05-03-2017 placed a 5/8" IRON WITH SEAL #50343.

SKETCH OF REFERENCE TIES



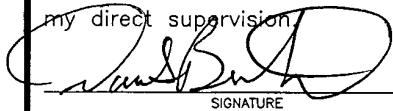
Minnesota State Plane Coordinate
System Yellow Medicine County Datum
NAD83 (1996)

N: 118914.013
E: 603348.554

Nail and survey marker in utility pole NE 49.35'
Corner is 4'± west of the centerline of the road.

Statement of evidence relative to this corner location is on back of page.

I hereby certify that this document and the data contained herein was prepared by me or under my direct supervision.


SIGNATURE

3/8/18
DATE

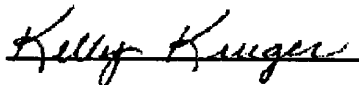
Registration No. 50343

Land Surveyor, Professional Engineer
 County Surveyor, County Engineer

Doc# 268089 Fee: \$0.00 2 Pages

Property & Public Services
Property Records Division
Yellow Medicine County, Minnesota
I hereby certify that the within instrument was filed on March 28, 2018 at 9:50 AM

Janel Timm, Yellow Medicine County Recorder

By  Deputy

Statement of Evidence

In 1864, Chas E. Davis and J.W. Webb, Jr. did the original subdivision of the township.

On May 3, 2017, Bueltel-Moseng Land Surveying set a 5/8" iron with seal #50343 midway and on line between the section corners. It is 4'± west of the center of the road.

CERTIFICATE OF LOCATION OF GOVERNMENT CORNER

NORTH QUARTER Corner of Section 15, Township 113 N., Range 39 W., 5TH P.M.

STATE OF MINNESOTA, County of YELLOW MEDICINE

At the location shown on the sketch:

On _____ found a _____

DATE

left monument as found, lowered monument, removed monument (explain)

On 5/28/2011 placed a 3/4 INCH x 18 INCH IRON ROD WITH A PLASTIC

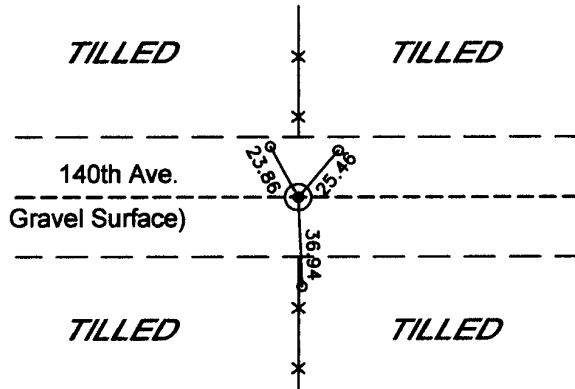
DATE

CAP STAMPED 42597

SKETCH OF REFERENCE TIES
(NOT TO SCALE)



SECTION 10



SECTION 15

Brandon King Land Surveying
N324 County Road D, Suite A
Eau Claire, WI 54737
715-639-5243

ALL MONUMENTS ARE 3/4" REBAR

ALL MEASUREMENTS ARE IN FEET UNLESS OTHERWISE NOTED.

Statement of evidence relative to this corner is on back of page.

I hereby certify that this survey, plan or report was prepared by me or under my direct supervision and that I am a duly Licensed Land Surveyor under the laws of the State of Minnesota.

Brandon W. King
Brandon W. King

Date 6/2/2011 License No. 42597

OFFICE OF THE COUNTY RECORDER
County of Yellow Medicine

I hereby certify that this document was filed in the Co. Recorders office at _____ M. on the _____ day of _____ A.D., 20 _____

County Recorder _____
By _____, Deputy

DOCUMENT NO. _____

Statement of Evidence:

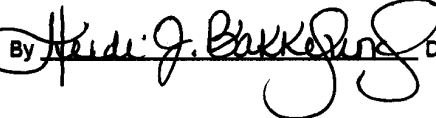
May 28, 2011

This position is based on the good fence lines north and south, intersecting the centerline of the Town Road. No other evidence was found nor any record evidence of a corner. A 3/4" rebar was placed and ties taken.

Doc# 253003 Fee: \$0.00 2 Pages

Office of County Recorder
Yellow Medicine County, Minnesota
I hereby certify that the within instrument
was filed on June 8, 2011 at 10:05 AM

Kay Zempel, Yellow Medicine County Recorder

By  Deputy

N/C
Brandon King Land Surveying, LLC
Brandon W. King
N4941 County Road S
Elmwood, WI 54740

Ret.

Brandon King Land Surveying
N324 County Road D, Suite A
Eau Galle, WI 54737
715-639-5243

Brandon King Land Surveying
N324 County Road D, Suite A
Eau Galle, WI 54737
715-639-5243

CERTIFICATE OF LOCATION OF GOVERNMENT CORNER

NORTH QUARTER Corner of Section 16, Township 113, Range 39, 5TH P.M.

STATE OF MINNESOTA, County of YELLOW MEDICINE

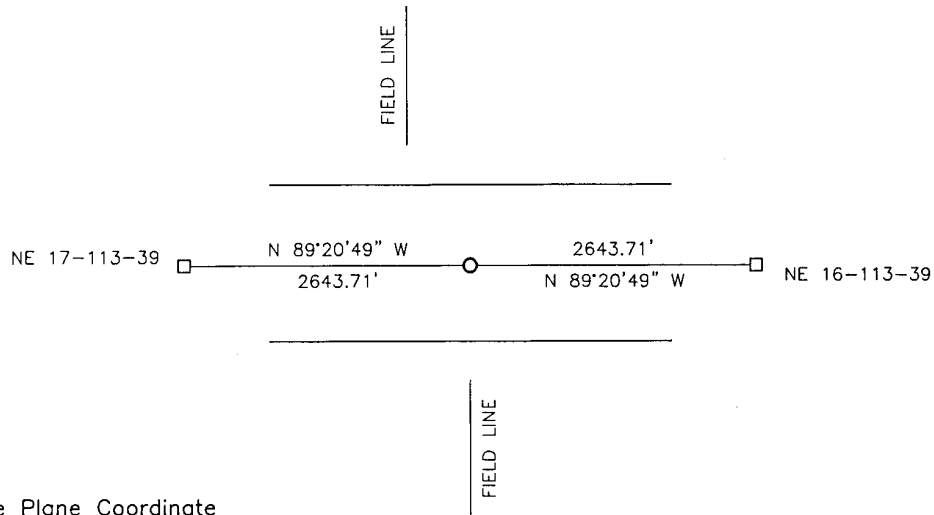
At the corner location shown on the sketch:

On _____ found a _____
DATE

left monument as found, lowered monument, removed monument (explain)

On 03-08-2017 placed a 5/8" IRON WITH SEAL #50343.
DATE

SKETCH OF REFERENCE TIES




Minnesota State Plane Coordinate
System Yellow Medicine County Datum
NAD83 (1996)

N: 121633.353
E: 590068.078

Statement of evidence relative to this corner location is on back of page.

I hereby certify that this document and the data contained herein was prepared by me or under my direct supervision.


SIGNATURE DATE 3/2/18

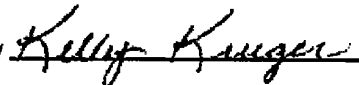
Registration No. 50343

Land Surveyor, Professional Engineer
 County Surveyor, County Engineer

Doc# 268092 Fee: \$0.00 2 Pages

Property & Public Services
Property Records Division
Yellow Medicine County, Minnesota
I hereby certify that the within instrument was filed on March 28, 2018 at 10:05 AM

Janel Timm, Yellow Medicine County Recorder

By  Deputy

Statement of Evidence

In 1864, Chas E. Davis and J.W. Webb, Jr. did the original subdivision of the township.

In 1914, John Norgaard, County Surveyor, located the corner at equal distance between the section corners. He set an iron bolt. He stated that it was not on line, but he did not say in which direction.

On March 8, 2017, Bueltel-Moseng Land Surveying set a 5/8" iron with seal #50343 equal distance and on line between the section corners. In 1914, John Norgaard stated that the corner was not on line. However we were not able to find the bolt he set and the center line of the road is on line with the section corners.

CERTIFICATE OF LOCATION OF GOVERNMENT CORNER

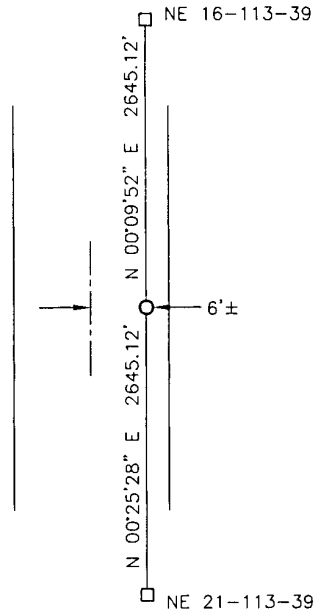
EAST QUARTER Corner of Section 16, Township 113, Range 39, 5TH P.M.

STATE OF MINNESOTA, County of YELLOW MEDICINE

At the corner location shown on the sketch:

- On _____ found a _____
DATE
- left monument as found, lowered monument, removed monument (explain)
- On 03-02-2017 placed a SURVEY SPIKE WITH SEAL #50343.
DATE

SKETCH OF REFERENCE TIES

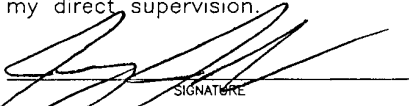


Minnesota State Plane Coordinate
 System Yellow Medicine County Datum
 NAD83 (1996)

N: 118958.110
 E: 592704.018

Statement of evidence relative to this corner location is on back of page.

I hereby certify that this document and the data contained herein was prepared by me or under my direct supervision.

 3/2/18
SIGNATURE DATE

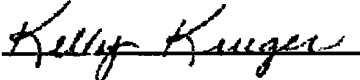
Registration No. 50343

- Land Surveyor, Professional Engineer
 County Surveyor, County Engineer

Doc# 268091 Fee: \$0.00 2 Pages

Property & Public Services
 Property Records Division
 Yellow Medicine County, Minnesota
 I hereby certify that the within instrument was filed on March 28, 2018 at 10:00 AM

Janel Timm, Yellow Medicine County Recorder

By  Deputy

Statement of Evidence

In 1864, Chas E. Davis and J.W. Webb, Jr. did the original subdivision of the township.

In 1914, John Norgaard, County Surveyor, set a stone equal distance and 6 feet east of a straight line between the section corners.

On March 2, 2017, Bueltel-Moseng Land Surveying set a survey spike with seal #50343 equal distance and 6 feet east of a straight line between the section corners.

CERTIFICATE OF LOCATION OF GOVERNMENT CORNER

CENTER of Section 16, Township 113, Range 39, 5TH P.M.

STATE OF MINNESOTA, County of YELLOW MEDICINE

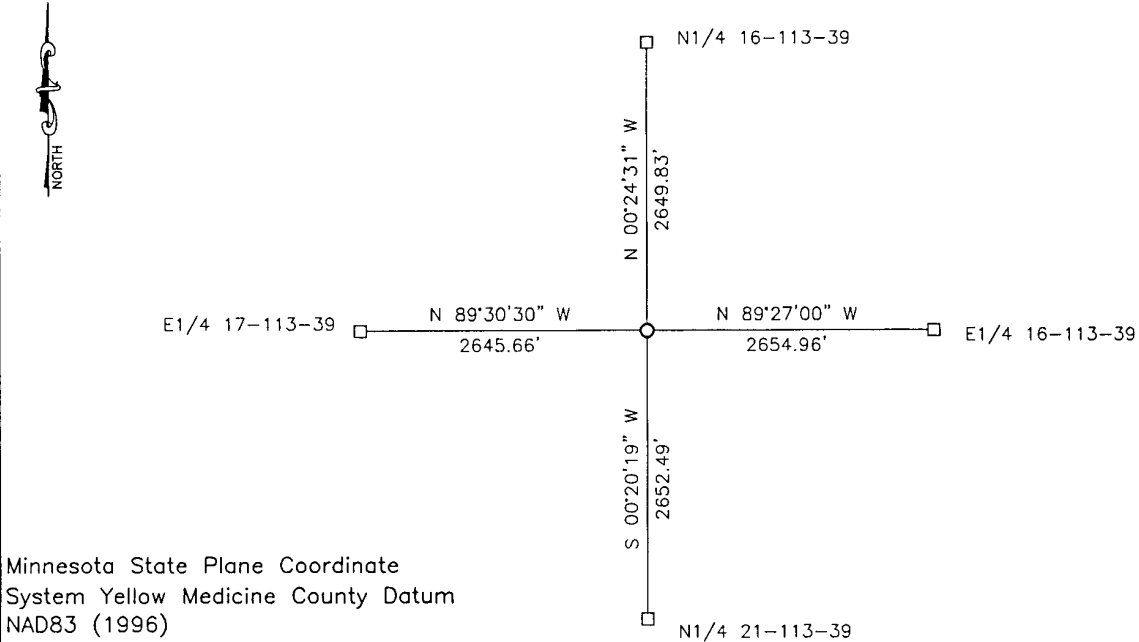
At the corner location shown on the sketch:

On 03-02-2017 found a FIELD STONE WITH 2 STEEL FENCE POST.
DATE

left monument as found, lowered monument, removed monument (explain)

On _____ placed a _____
DATE

SKETCH OF REFERENCE TIES



Minnesota State Plane Coordinate System Yellow Medicine County Datum NAD83 (1996)

N: 118983.595
E: 590049.185

Statement of evidence relative to this corner location is on back of page.

I hereby certify that this document and the data contained herein was prepared by me or under my direct supervision.

[Signature] 3/2/18
SIGNATURE DATE

Registration No. 50343

- Land Surveyor, Professional Engineer
- County Surveyor, County Engineer

Doc# 268090 Fee: \$0.00 2 Pages

Property & Public Services
Property Records Division
Yellow Medicine County, Minnesota
I hereby certify that the within instrument was filed on March 28, 2018 at 9:55 AM

Janel Timm, Yellow Medicine County Recorder

By Kelly Kauger Deputy

Statement of Evidence

In 1864, Chas E. Davis and J.W. Webb, Jr. did the original subdivision of the township.

In 1914, John Norgaard, County Survey, surveyed the Section 16-113-39.

In 1928, John Norgaard, County Survey, surveyed the Southwest Quarter of Section 16-113-39.

On March 2, 2017, Bueltel-Moseng Land Surveying found a field stone with 2 steel fence post by it. It is line with the field lines to the west and north and the pine trees to the east.

CERTIFICATE OF LOCATION OF GOVERNMENT CORNER

NORTHEAST Corner of Section 16, Township 113 N., Range 39 W., 5TH P.M.

STATE OF MINNESOTA, County of YELLOW MEDICINE

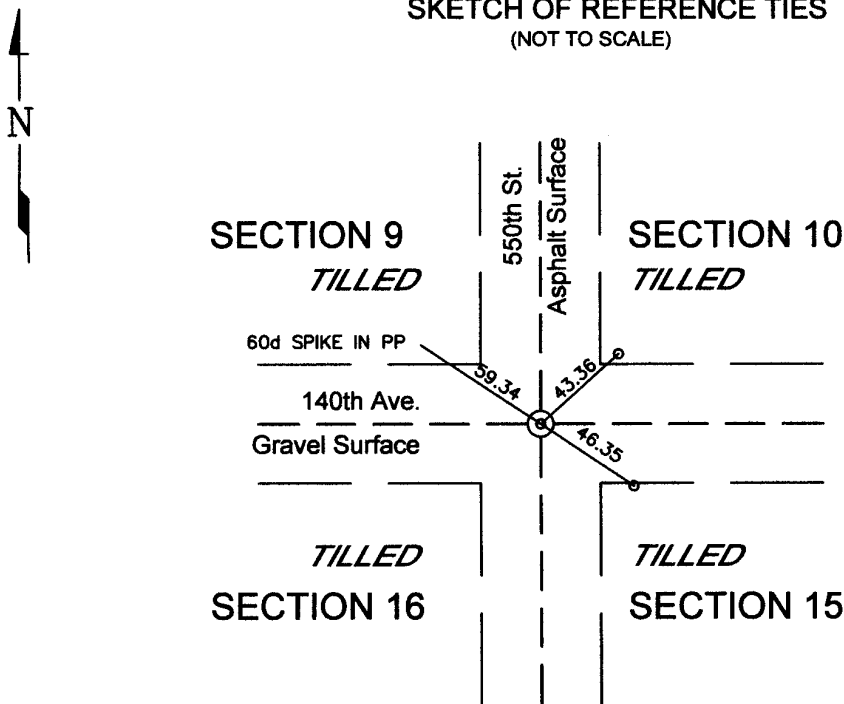
At the location shown on the sketch:

On 5/28/2011 found a 1 INCH IRON ROD
DATE

left monument as found, lowered monument, removed monument (explain)

On _____ placed a _____
DATE

SKETCH OF REFERENCE TIES
(NOT TO SCALE)



Brandon King Land Surveying
N324 County Road D, Suite A
Eau Galle, WI 54737
715-639-5243

ALL TIE MONUMENTS ARE 3/4" REBAR

ALL MEASUREMENTS ARE IN FEET UNLESS OTHERWISE NOTED.

Statement of evidence relative to this corner is on back of page.

I hereby certify that this survey, plan or report was prepared by me or under my direct supervision and that I am a duly Licensed Land Surveyor under the laws of the State of Minnesota.

Brandon W. King
Brandon W. King

Date 6/2/2011 License No. 42597

OFFICE OF THE COUNTY RECORDER
County of Yellow Medicine

I hereby certify that this document was filed in the Co. Recorders office at _____ M. on the _____ day of _____ A.D., 20 _____

County Recorder _____
By _____, Deputy

DOCUMENT NO. _____

Statement of Evidence:

May 28, 2011

A 1" iron rod was found at the centerline intersection. No other evidence was found and ties were taken.

Doc# 253048 Fee: \$0.00 2 Pages

Office of County Recorder
Yellow Medicine County, Minnesota
I hereby certify that the within instrument
was filed on June 16, 2011 at 10:05 AM

Kay Zempel, Yellow Medicine County Recorder

By Debra Beard Deputy

N/C
Ret.

Brandon King Land Surveying
N324 County Road D, Suite A
Eau Galle, WI 54737
715-639-5243

CERTIFICATE OF LOCATION OF GOVERNMENT CORNER

NORTHEAST Corner of Section 17, Township 113, Range 39, 5TH P.M.

STATE OF MINNESOTA, County of YELLOW MEDICINE

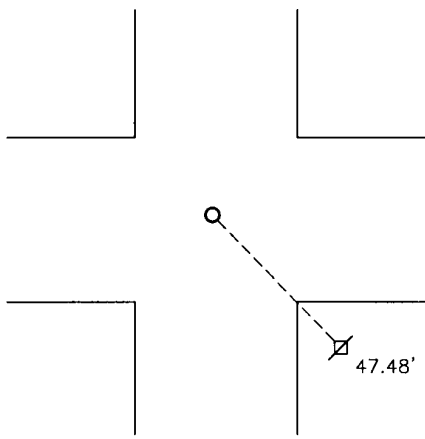
At the corner location shown on the sketch:

On 3/20/15 found a square cut granite monument under a stove lid
DATE

left monument as found, lowered monument, removed monument (explain)

On _____ placed a _____
DATE

SKETCH OF REFERENCE TIES




Minnesota State Plane Coordinate
System Yellow Medicine County Datum
NAD83 (1996)

N: 121663.490
E: 587424.540

Nail and survey marker in utility pole SE 47.48'

Statement of evidence relative to this corner location is on back of page.

I hereby certify that this document and the data contained herein was prepared by me or under my direct supervision.


SIGNATURE

3/2/16
DATE

Registration No. 43844

- Land Surveyor, Professional Engineer
 County Surveyor, County Engineer

OFFICE OF THE COUNTY RECORDER

County of _____

I hereby certify that this document was filed in the Co. Recorders office at _____ .M on the _____ day of _____ A.D. 20 _____

County Recorder _____

By _____, Deputy

DOCUMENT NO. _____

Statement of Evidence

In September, Chas E. Davis and J.W. Webb Jr. did the original subdivision of the township.

In 1903, John Norgaard, County Surveyor, recorded a square cut granite monument at the corner.

On August 22, 1955, W. Bix Griebler, found a square cut granite monument under a stove lid 8 inches below the surface of the road.

On March 20, 2015, Bueltel-Moseng Land Surveying found a square cut granite monument under a stove lid 8 inches below the surface.

Doc# 263808 Fee: \$0.00 2 Pages

Property & Public Services
Property Records Division
Yellow Medicine County, Minnesota

I hereby certify that the within instrument
was filed on March 28, 2016 at 11:05 AM

Janel Timm, Yellow Medicine County Recorder

By Debra Blood Deputy

CERTIFICATE OF LOCATION OF GOVERNMENT CORNER

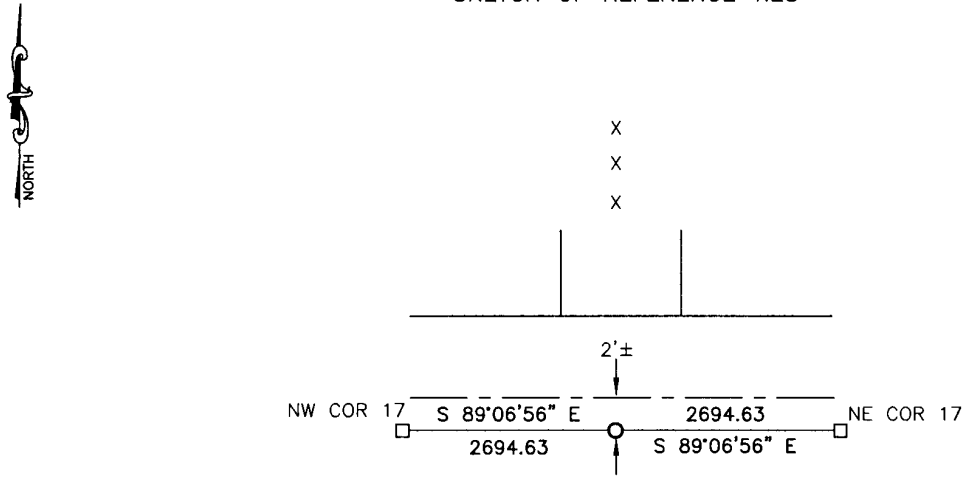
NORTH QUARTER Corner of Section 17, Township 113, Range 39, 5TH P.M.

STATE OF MINNESOTA, County of YELLOW MEDICINE

At the corner location shown on the sketch:

- On _____ found a _____
DATE
- left monument as found, lowered monument, removed monument (explain)
- On 4/8/15 placed a 5/8" iron with seal #43844
DATE

SKETCH OF REFERENCE TIES



Minnesota State Plane Coordinate
 System Yellow Medicine County Datum
 NAD83 (1996)
 N: 121705.081
 E: 584730.231

NO TIES

Statement of evidence relative to this corner location is on back of page.

I hereby certify that this document and the data contained herein was prepared by me or under my direct supervision.

[Signature] 3/3/16
 SIGNATURE DATE

Registration No. 43844

- Land Surveyor, Professional Engineer
- County Surveyor, County Engineer

OFFICE OF THE COUNTY RECORDER

County of _____

I hereby certify that this document was filed in the Co. Recorders office at _____ .M on the _____ day of _____ A.D. 20 _____

County Recorder _____

By _____, Deputy

DOCUMENT NO. _____

Statement of Evidence

In September, 1864, Chas E. Davis and J.W. Webb Jr. did the original subdivision of the township.

In 1903, John Norgaard, County Surveyor, recorded the corner to be on line and equal distances between the section corners.

On September 1, 1955, W. Bix Griebler, noted the fence line to the north to be within 1'-2' of midway. Did not set corner.

On April 8, 2015, Bueltel-Moseng Land Surveying set a 5/8" iron with seal #43844 midway and online between section corners as Norgaard had done in 1903. It is 2'± south of centerline of road and in line with fence to the north.

Doc# 263807 Fee: \$0.00 2 Pages

Property & Public Services

Property Records Division

Yellow Medicine County, Minnesota

I hereby certify that the within instrument
was filed on March 28, 2016 at 11:00 AM

Janel Timm, Yellow Medicine County Recorder

By Debra Blood Deputy

CERTIFICATE OF LOCATION OF GOVERNMENT CORNER

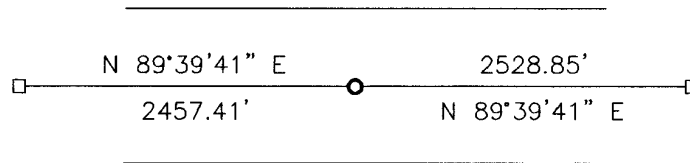
NORTH QUARTER Corner of Section 18, Township 113, Range 39, 5TH P.M.

STATE OF MINNESOTA, County of YELLOW MEDICINE

At the corner location shown on the sketch:

- On _____ found a _____
DATE
- left monument as found, lowered monument, removed monument (explain)
- On 11-22-2010 placed a 5/8" IRON WITH SEAL #43844
DATE

SKETCH OF REFERENCE TIES



Minnesota State Plane Coordinate
 System Yellow Medicine County Datum
 NAD83 (1996)

N: 121731.733
 E: 579507.117

Statement of evidence relative to this corner location is on back of page.

I hereby certify that this document and the data contained herein was prepared by me or under my direct supervision.

David B. ... 1/10/11
SIGNATURE DATE

Registration No. 43844

- Land Surveyor, Professional Engineer
 County Surveyor, County Engineer

OFFICE OF THE COUNTY RECORDER
 County of _____

I hereby certify that this document was filed in the Co. Recorders office at _____ .M on the _____ day of _____ A.D. 20 _____

County Recorder _____

By _____, Deputy

DOCUMENT NO. _____

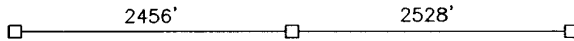
Statement of Evidence

In 1864, Chas E. Davis & J. W. Webb, Jr. did the original subdivision of the township.

On July 8, 1890, Jonah Peterman, the County Surveyor, established the corner.

In March 1912, John Norgaard located the corner as follows:

The corner was located according to the Bahm Brothers testimony. The corner is located where the original government corner was.




On November 22, 2010, Bueltel-Moseng Land Surveying set a 5/8" iron with seal #43844 on line and single proportionate distances between the section corners.

Doc# 252038 Fee: \$0.00 2 Pages

Office of County Recorder
Yellow Medicine County, Minnesota
I hereby certify that the within instrument
was filed on January 13, 2011 at 8:30 AM

Kay Zempel, Yellow Medicine County Recorder

By  Deputy

N/C

Bueltel-Moseng Land Surveying
P.O. Box 32
Marshall, MN 56258

CERTIFICATE OF LOCATION OF GOVERNMENT CORNER

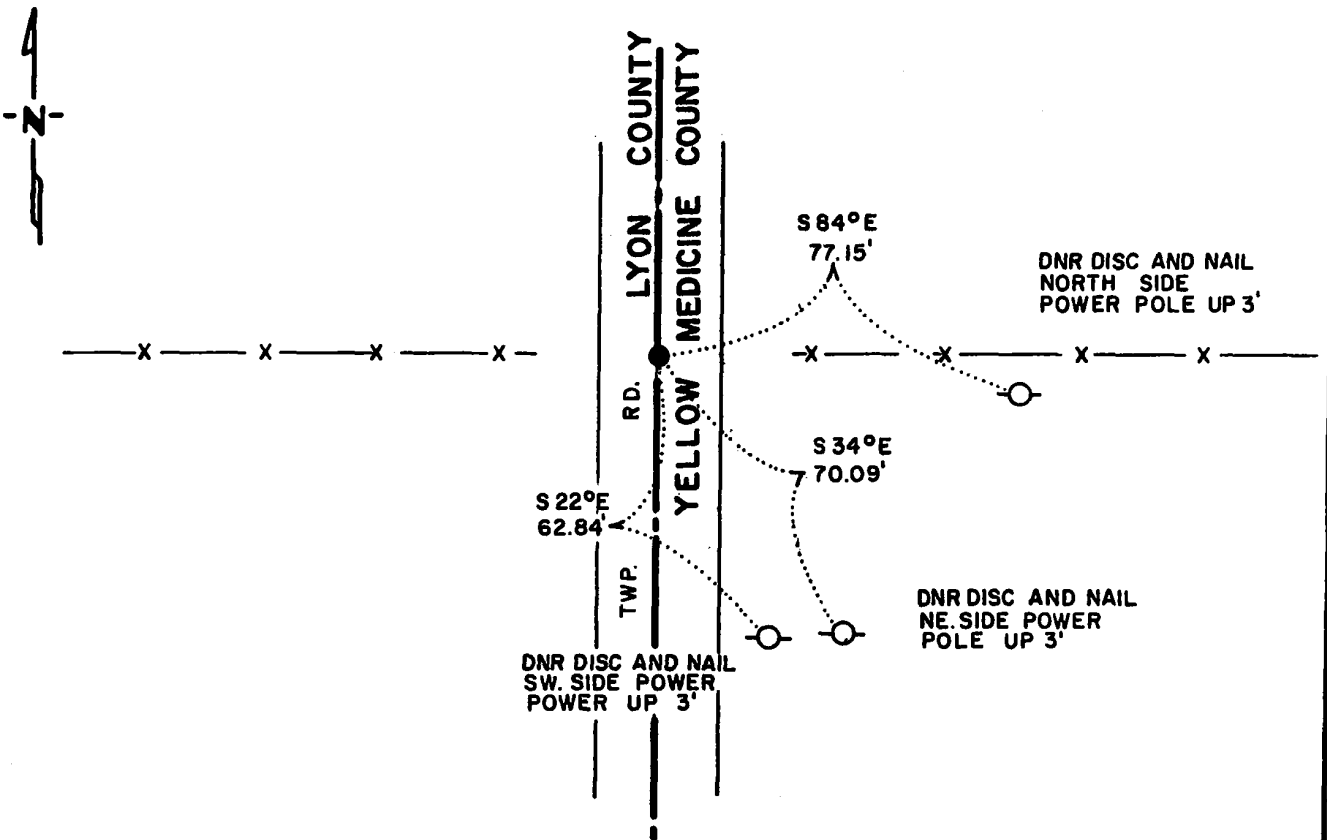
WEST QUARTER Corner of Section 18, Township 113N., Range 39W., 51h P.M.

STATE OF MINNESOTA, County of YELLOW MEDICINE

At the corner location shown on the sketch:

- On _____ found a _____
- left monument as found, lowered monument, removed monument (explain)
- On 2-6-86 placed a 1/4"x1/4"x20" PERFORATED STEEL TUBE WITH
ALUMINUM CAP STAMPED "DNR SURVEY MARKER", DOWN 0.4'

SKETCH OF REFERENCE TIES



BEARINGS OBSERVED WITH COMPASS

Statement of evidence relative to this corner location is on back of page.

J.A.G 3-6-86
G-1187

I hereby certify that this document and the data contained herein was prepared by me or under my direct supervision.

Louell R. Pomeroy 3-11-86
SIGNATURE DATE

Registration No. 17005

- Land Surveyor, Professional Engineer
- County Surveyor, County Engineer

OFFICE OF THE COUNTY RECORDER
County of Yellow Medicine

I hereby certify that this document was filed in the Co. Recorders office at 9:30 A.M. on the 21 day of March A.D., 19 86

County Recorder Norman J. Opdahl

By Kay Nordahl, Deputy

DOCUMENT NO. 188027

RECORDED	<input checked="" type="checkbox"/>
GRANTED	<input checked="" type="checkbox"/>
GRANTEE	<input checked="" type="checkbox"/>
INDEXED	<input checked="" type="checkbox"/>

West Quarter Corner Section 18, Township 113 North, Range 39 West

This corner was originally established by the U. S. General Land Office survey in 1858. The government notes show corner marked with a wood post set in mound of earth with pits and trench dug around the mound.

In July 1985, the DNR Bureau of Engineering contacted the following for corner information:

Lyon County Offices of the Recorder and Highway Engineer
Yellow Medicine County Offices of the Recorder and Highway Engineer

The following information was obtained from the Yellow Medicine County Recorder's Office:

Surveyor's Record Book, on Page 262, contains a survey by John Norgaard, County Surveyor, in March 1912. Norgaard states he used fence lines running east and west. Adjoining landowners testified that fence lines were set according to the government line when plain. Survey shows a distance of 2651 feet from this corner to the southeast corner of Section 13, but does not state what was set at the corner.

On October 10, 1985, the DNR Bureau of Engineering hired a backhoe operated by Rick Jessoritz of Cottonwood to dig for evidence of this corner. Dug a 9 foot east-west by 12 foot north-south hole, the center being at the intersection of a north-south road and fence lines east and west. Encountered an old road bed down 14", natural ground down 20", dug down to a depth of 30", but found nothing. Set a temporary point at the above mentioned intersection. The temporary point measures:

2652.05 feet from the northeast corner Section 13
2655.44 feet from the northeast corner Section 24
1.70 feet north and 0.44 feet east of the lost position

Accept the temporary point as the location of the corner.

Traverse information is available from the DNR Bureau of Engineering.

199hab/missu4

CERTIFICATE OF LOCATION OF GOVERNMENT CORNER

Corner to Section 18 Township 113 N Range 39 W No. _____

STATE OF MINNESOTA,

County of Yellow Medicine S.S.

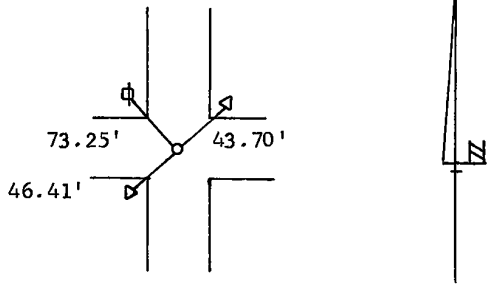
I hereby certify that on the 7TH day of July 1976,
that I, Lyle E. Moseng, a Registered Land Surveyor, ~~County Surveyor,~~

~~County Highway Engineer,~~ ^{SET} found the Northeast corner of Section 18
~~which was evidenced by~~ the information in W. Griebler 1955 survey on file in

Yellow Medicine Co. Court House and I further certify that to perpetuate the
location of such corner I did, at the exact location thereof, place a permanent
marker consisting of #4 Rebar w/seal.

I further certify that I established 3 references or witness monuments consist-
ing of a power pole & two yeild signs which reference or witness monuments are
located in the manner following.

- | | |
|-------------------------------------|-------------|
| Center of steel post for yeild sign | NE 43.70 ft |
| Center of steel post for yeild sign | SW 46.41 ft |
| Dh nail & bc in PP | NW 73.25 ft |



Dated at Marshall, Minnesota, this 27th day of May, 1980.

Lyle E. Moseng
~~County Surveyor, County Highway Engineer~~
Registered Land Surveyor No. 11943

183001
OFFICE OF THE REGISTER OF DEEDS
County of Yellow Medicine

I hereby certify that the within instrument was filed in this office for
record on the 16 day of November A.D., 1983, at 1:55 o'clock P.M.

Norman J. Opdahl, County Recorder
Register of Deeds
by Kay Nordahl Deputy

CERTIFICATE OF LOCATION OF GOVERNMENT CORNER

WEST QUARTER Corner of Section 19, Township 113, Range 39, 5TH P.M.

STATE OF MINNESOTA, County of YELLOW MEDICINE

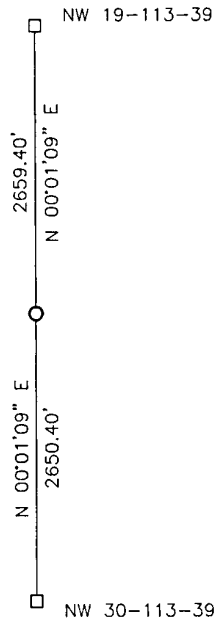
At the corner location shown on the sketch:

On _____ found a _____
DATE

left monument as found, lowered monument, removed monument (explain)

On 11-07-2017 placed a 5/8" IRON WITH SEAL #50343.
DATE

SKETCH OF REFERENCE TIES



Minnesota State Plane Coordinate
System Yellow Medicine County Datum
NAD83 (1996)

N: 113750.522
E: 577103.880

Statement of evidence relative to this corner location is on back of page.

I hereby certify that this document and the data contained herein was prepared by me or under my direct supervision.

[Signature] 3/16/2018
SIGNATURE DATE

Registration No. 50343

- Land Surveyor, Professional Engineer
- County Surveyor, County Engineer

Doc# 268093 Fee: \$0.00 2 Pages

Property & Public Services
Property Records Division
Yellow Medicine County, Minnesota
I hereby certify that the within instrument was filed on March 28, 2018 at 10:10 AM

Janel Timm, Yellow Medicine County Recorder

By [Signature] Deputy

Statement of Evidence

In 1858, W.J. Neeley did the original survey of the west line of the township.

In September 1896, the Lyon County Surveyor found 2 wood stakes set in mound at the corner. He set a kasota stone at the corner.

On November 7, 2017, Bueltel-Moseng Land Surveying searched for the stone in the middle of a plowed field. We were unable to find it. We set a 5/8" iron with seal #50343 on line and proportionate distances from the section corners.

CERTIFICATE OF LOCATION OF GOVERNMENT CORNER

North Quarter _____ Corner of Section 19 , Township 113 , Range 39 , 5th P.M.

STATE OF MINNESOTA, County of Yellow Medicine

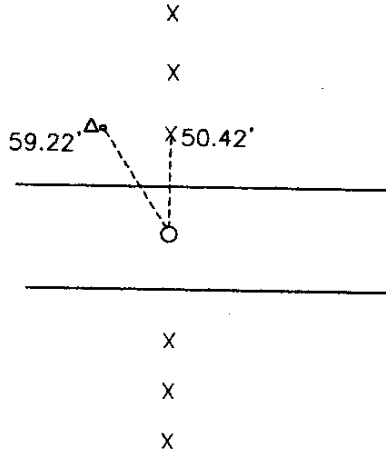
At the corner location shown on the sketch:

On _____ found a _____

left monument as found, lowered monument, removed monument (explain)

On June 3, 1998 placed a 1" iron pipe with seal #11943

SKETCH OF REFERENCE TIES



Nail and seal in guard post next to pedestal 59.22' NW
Nail and seal in end fence post 50.42' N

Statement of evidence relative to this corner location is on back of page.

I hereby certify that this document and the data contained herein was prepared by me or under my direct supervision.

Lyle C. Mooney 1-11-99
SIGNATURE DATE

Registration No. 11943

- Land Surveyor, Professional Engineer
- County Surveyor, County Engineer

OFFICE OF THE COUNTY RECORDER

County of _____

I hereby certify that this document was filed in the Co. Recorders office at 10:15 A .M on the 11 day of Feb. A.D. 19 99

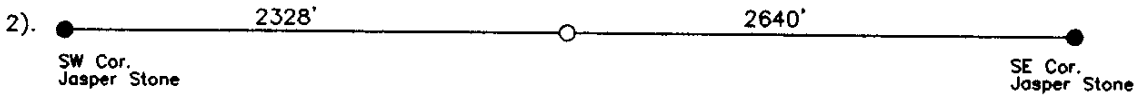
County Recorder Kay Nerdahl

By Steve Rohrk Deputy

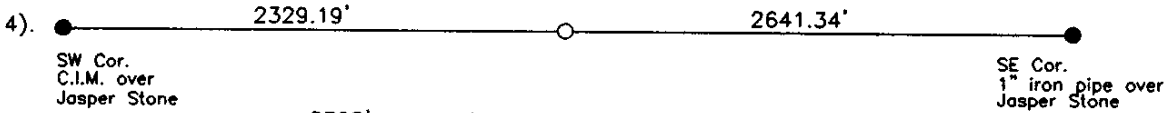
DOCUMENT NO. **219294**

Statement of Evidence

1). In March of 1912, John Norgaard set the corner according to testimony of Bahn Brothers, he recorded the following.



3). On June 3, 1998 Moseng land surveying dug with backhoe from Jeseritz Construction, we found nothing. We placed a 1" iron pipe with seal number 11943, proportionately between section corners.



$$\frac{2328'}{4968'} = \frac{X}{4970.53'} = X = 2329.19'$$

CERTIFICATE OF LOCATION OF GOVERNMENT CORNER

Northeast Corner of Section 19, Township 113, Range 39, 5th P.M.

STATE OF MINNESOTA, County of Yellow Medicine

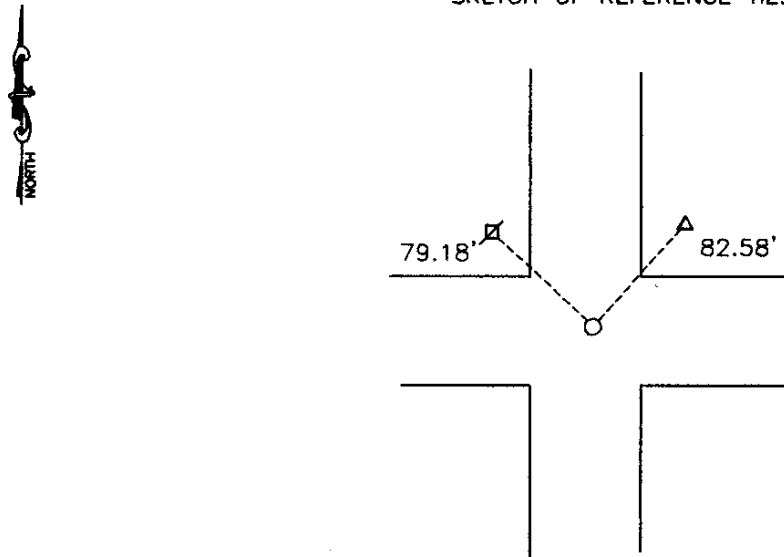
At the corner location shown on the sketch:

On June 3, 1998 found a Square cut Jasper stone, 3 feet below road surface
DATE

left monument as found, lowered monument, removed monument (explain)

On June 3, 1998 placed a 5/8" iron with seal #11943 above stone
DATE

SKETCH OF REFERENCE TIES



Nail and seal in power pole 79.18' NW
Top center of telephone pedestal 82.58' NE

Statement of evidence relative to this corner location is on back of page.

I hereby certify that this document and the data contained herein was prepared by me or under my direct supervision.

Lyle C. Maing 11/25/98
SIGNATURE DATE

Registration No. 11943

Land Surveyor, Professional Engineer
 County Surveyor, County Engineer

OFFICE OF THE COUNTY RECORDER

County of

I hereby certify that this document was filed in the Co. Recorders office at 10:50 A.M on the 28 day of Dec. A.D. 19 98

County Recorder Norman J. Opdahl

By Dolores B..., Deputy

DOCUMENT NO. 218899

RECORDED
GRANTED
GRANTED
GRANTED

Statement of Evidence

On June 3, 1998 Moseng land surveying dug with backhoe from Jeseritz Construction, we found a square cut stone 3 feet below road surface. There was a 3/8" iron hook next to stone. We placed a 5/8" iron with seal number 11943 above stone at road surface.

11943
11943
11943
11943
11943

CERTIFICATE OF LOCATION OF GOVERNMENT CORNER

NORTHEAST Corner of Section 20, Township 113, Range 39, 5TH P.M.

STATE OF MINNESOTA, County of YELLOW MEDICINE

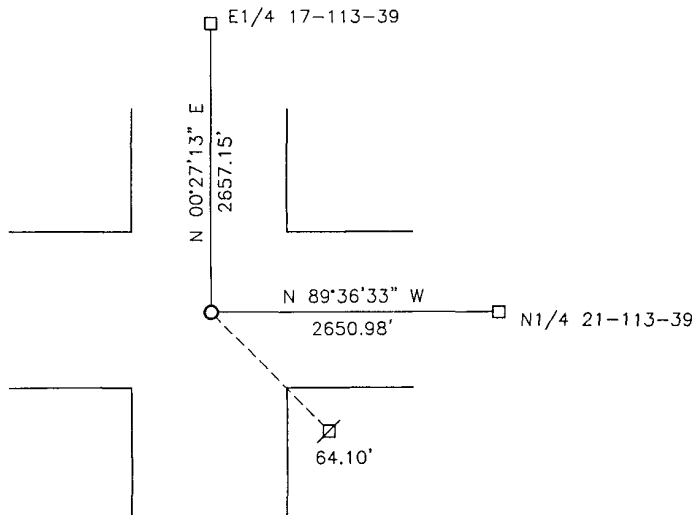
At the corner location shown on the sketch:

On 03-02-2017 found a BRIDGE SPIKE OVER STONE.
DATE

left monument as found, lowered monument, removed monument (explain)

On 03-02-2017 placed a 5/8" IRON WITH SEAL #50343.
DATE

SKETCH OF REFERENCE TIES



Minnesota State Plane Coordinate
System Yellow Medicine County Datum
NAD83 (1996)

Nail and bottle cap in utility pole SE 64.10'

N: 116349.237
E: 587382.591

Statement of evidence relative to this corner location is on back of page.

I hereby certify that this document and the data contained herein was prepared by me or under my direct supervision.

[Signature] 3/2/18
SIGNATURE DATE

Registration No. 50343

- Land Surveyor, Professional Engineer
- County Surveyor, County Engineer

Doc# 268094 Fee: \$0.00 2 Pages

Property & Public Services
Property Records Division
Yellow Medicine County, Minnesota
I hereby certify that the within instrument was filed on March 28, 2018 at 10:15 AM

Janel Timm, Yellow Medicine County Recorder

By Kelly Kruger Deputy

Statement of Evidence

In 1864, Chas E. Davis and J.W. Webb, Jr. did the original subdivision of the township.

In 1912, John Norgaard, County Surveyor, set a jasper stone monument at the corner.

In 1939, Yellow Medicine County Highway Department located a stone at the corner.

In 1958, Yellow Medicine County Highway Department located a stone at the corner.

On March 2, 2017, Bueltel-Moseng Land Surveying found a county bridge spike at the corner over stone. We removed the spike and set a 5/8" iron with seal #50343 in its place over the stone.

CERTIFICATE OF LOCATION OF GOVERNMENT CORNER

NORTH QUARTER Corner of Section 21, Township 113, Range 39, 5TH P.M.

STATE OF MINNESOTA, County of YELLOW MEDICINE

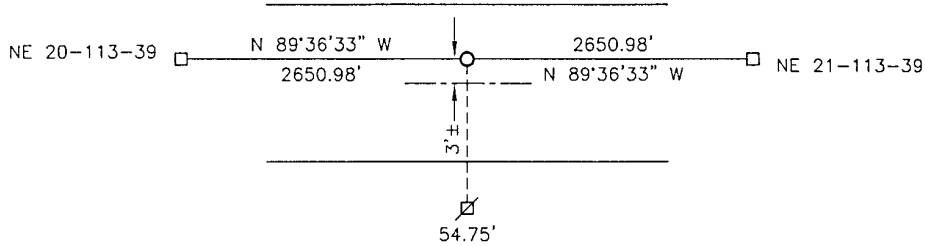
At the corner location shown on the sketch:

On _____ found a _____
DATE

left monument as found, lowered monument, removed monument (explain)

On 03-02-2017 placed a 5/8" IRON WITH SEAL #50343.
DATE

SKETCH OF REFERENCE TIES



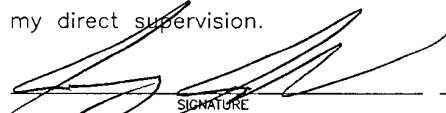
Minnesota State Plane Coordinate
System Yellow Medicine County Datum
NAD83 (1996)

N: 116331.151
E: 590033.505

Nail and bottle cap in utility pole South 54.75'

Statement of evidence relative to this corner location is on back of page.

I hereby certify that this document and the data contained herein was prepared by me or under my direct supervision.


SIGNATURE DATE 3/2/18

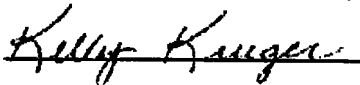
Registration No. 50343

Land Surveyor, Professional Engineer
 County Surveyor, County Engineer

Doc# 268095 Fee: \$0.00 2 Pages

Property & Public Services
Property Records Division
Yellow Medicine County, Minnesota
I hereby certify that the within instrument was filed on March 28, 2018 at 10:20 AM

Janel Timm, Yellow Medicine County Recorder

By  Deputy

Statement of Evidence

In 1864, Chas E. Davis and J.W. Webb, Jr. did the original subdivision of the township.

In 1914, John Norgaard, County Surveyor, established the corner at equal distance between the section corners.

On March 2, 2017, Bueltel-Moseng Land Surveying set a 5/8" iron with seal #50343 midway and on line between the section corners.

CERTIFICATE OF LOCATION OF GOVERNMENT CORNER

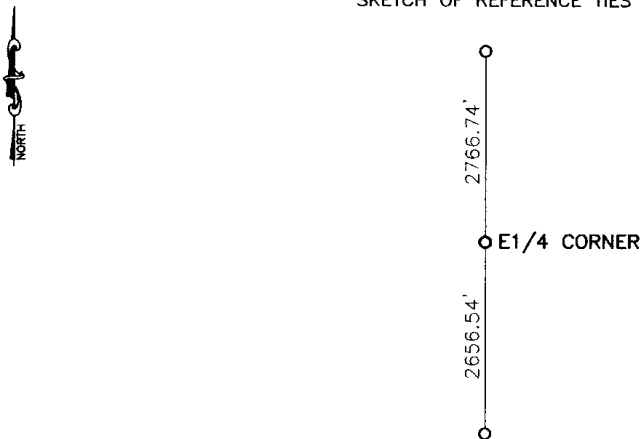
East Quarter Corner of Section 21, Township 113, Range 39, 5th P.M.

STATE OF MINNESOTA, County of Yellow Medicine

At the corner location shown on the sketch:

- On _____ found a _____
DATE
- left monument as found, lowered monument, removed monument (explain)
- On 5-7-2003 placed a P.K. nail in line and proportionally between section corners.
DATE

SKETCH OF REFERENCE TIES



Nothing to tie to.

Statement of evidence relative to this corner location is on back of page.

I hereby certify that this document and the data contained herein was prepared by me or under my direct supervision.

Lyle C. Mooring 2-06-04
SIGNATURE DATE

Registration No. 11943

- Land Surveyor, Professional Engineer
- County Surveyor, County Engineer

OFFICE OF THE COUNTY RECORDER

County of _____

I hereby certify that this document was filed in the Co. Recorders office at _____ M on the _____ day of _____ A.D. 19 _____

County Recorder _____

By _____, Deputy

DOCUMENT NO. _____

Statement of Evidence

In 1912 John Norgaard set a iron rod 2652.00 feet North of the Southeast corner of section 21, his total mile was 5414 feet.

On May 7, 2003 Moseng Land Surveying did not find corner. We set a P.K. nail in line and proportionally between section corners. It fell 2656.54 feet North of the Southeast corner. Construction will take out any corner we set.

$$\frac{2652}{5414} = \frac{2656.54}{5423.28}$$

Doc# 236985 Fee: \$0.00 2 Pages
Office of County Recorder, Yellow Medicine County, Minnesota
I hereby certify that the within instrument was
filed on January 4, 2005 at 01:40 PM

Kay Zempel, Yellow Medicine County Recorder
BY Jill Runk Deputy

CERTIFICATE OF LOCATION OF GOVERNMENT CORNER

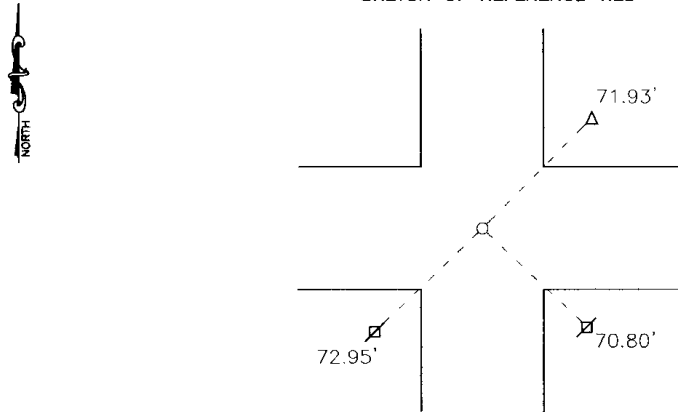
Northeast Corner of Section 21, Township 113, Range 39, 5th P.M.

STATE OF MINNESOTA, County of Yellow Medicine

At the corner location shown on the sketch:

- On _____ found a _____
DATE
- left monument as found, lowered monument, removed monument (explain)
- On 5-7-2003 placed a 1" pipe with seal #11943
DATE

SKETCH OF REFERENCE TIES



Nail and bottle cap in power pole Southwest 72.95'
 Nail and bottle cap in power pole Southeast 70.80'
 Nail and seal in telephone guard post Northeast 71.93'

Statement of evidence relative to this corner location is on back of page.

I hereby certify that this document and the data contained herein was prepared by me or under my direct supervision.

Lyle E. Mooring 2-06-04
SIGNATURE DATE

Registration No. 11943
 Land Surveyor, Professional Engineer
 County Surveyor, County Engineer

OFFICE OF THE COUNTY RECORDER

County of _____
 I hereby certify that this document was filed in the Co. Recorders office at _____ M on the _____ day of _____ A.D. 19 _____

County Recorder _____
 By _____, Deputy
 DOCUMENT NO. _____

Statement of Evidence

On May 7, 2003 Moseng Land Surveying dug and found 2 large spikes and a small piece of old wood. We set a 1" pipe with seal #11943 where the 2 spikes were.

Doc# 236984 Fee: \$.00 2 Pages
Office of County Recorder, Yellow Medicine County, Minnesota
I hereby certify that the within instrument was
filed on January 4, 2005 at 01:35 PM

Kay Zempel, Yellow Medicine County Recorder
BY: Paul K. H. K. Deputy

CERTIFICATE OF LOCATION OF GOVERNMENT CORNER

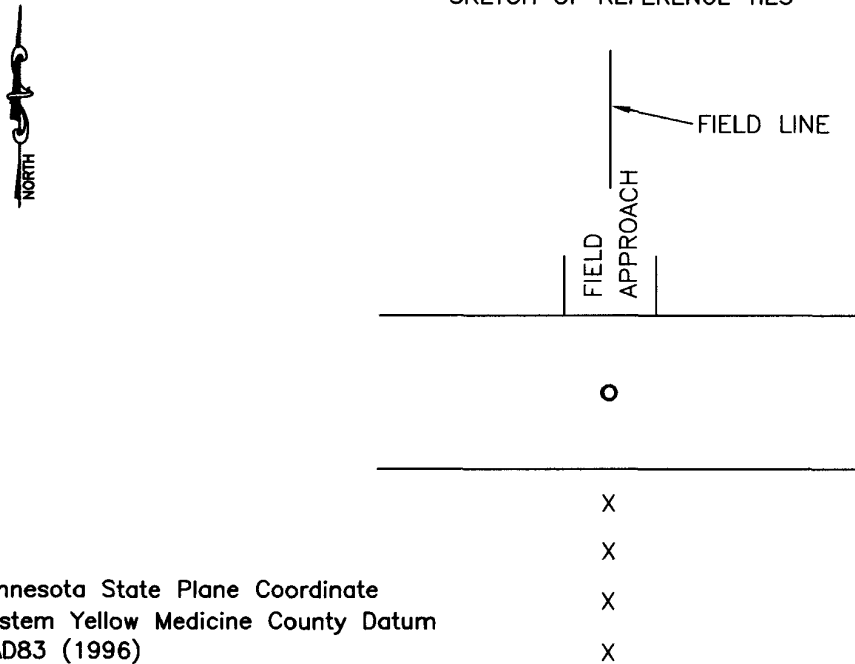
NORTH QUARTER Corner of Section 22, Township 113, Range 39, 5TH P.M.

STATE OF MINNESOTA, County of YELLOW MEDICINE

At the corner location shown on the sketch:

- On _____ found a _____
DATE
- left monument as found, lowered monument, removed monument (explain)
- On 12-02-2011 placed a survey spike with seal #43844.
DATE

SKETCH OF REFERENCE TIES



Minnesota State Plane Coordinate
 System Yellow Medicine County Datum
 NAD83 (1996)
 N: 116294.093
 E: 595339.912

Statement of evidence relative to this corner location is on back of page.

I hereby certify that this document and the data contained herein was prepared by me or under my direct supervision.

Samuel Buehler 1/20/12
SIGNATURE DATE

Registration No. 43844
 Land Surveyor, Professional Engineer
 County Surveyor, County Engineer

OFFICE OF THE COUNTY RECORDER
 County of _____

I hereby certify that this document was filed in the Co. Recorders office at _____ .M on the _____ day of _____ A.D. 20 _____

County Recorder _____
 By _____, Deputy
 DOCUMENT NO. _____

Statement of Evidence

In 1864, Davis and Webb did the original subdivision of the township.

In June, 1887, the county surveyor measured the corner to be 40.23 chains from the northwest corner of the section.

In June, 1911, Norgaard found an old wooden stake at the corner. He set an iron bolt. (No distances)

On December 2, 2011, Bueltel-Moseng Land Surveying set a survey spike with seal #43844 midway and on line between the section corners. It fell in the center line of the road and in line with the fence to the south.

Doc# 254463 Fee: \$0.00 2 Pages
Property & Public Services
Property Records Division
Yellow Medicine County, Minnesota
I hereby certify that the within instrument
was filed on January 23, 2012 at 10:25 AM

Janel Timm, Yellow Medicine County Recorder

By Debra Blood Deputy

N/C
Bueltel-Moseng Land Surveying
PO Box 32
Marshall, MN 56258

CERTIFICATE OF LOCATION OF GOVERNMENT CORNER

East Quarter Corner of Section 22, Township 113, Range 39, 5th P.M.

STATE OF MINNESOTA, County of Yellow Medicine

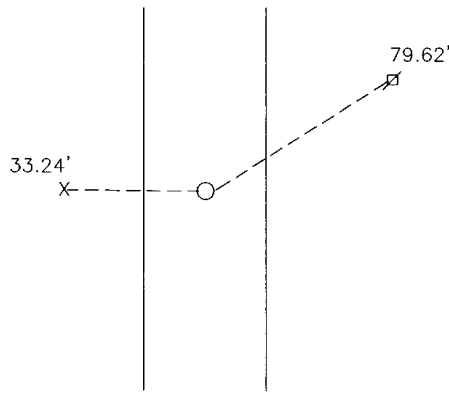
At the corner location shown on the sketch:

On 10-02-2000 found a Nothing

left monument as found, lowered monument, removed monument (explain)

On 10-02-2000 placed a 5/8" rerod with a seal #11943

SKETCH OF REFERENCE TIES



Nail and seal in cut off power pole (corner fence post) 33.24' West

Nail and seal in power pole 79.62' Northeast

Statement of evidence relative to this corner location is on back of page.

I hereby certify that this document and the data contained herein was prepared by me or under my direct supervision.

Ryle C. Morrison
SIGNATURE

1-14-06
DATE

Registration No. 11943

Land Surveyor, Professional Engineer
 County Surveyor, County Engineer

OFFICE OF THE COUNTY RECORDER

County of _____

I hereby certify that this document was filed in the Co. Recorders office at _____ M on the _____ day of _____ A.D. 19 _____

County Recorder _____

By _____, Deputy

DOCUMENT NO. _____

Statement of Evidence

In 1864, Ches E Davis and L. W. Webb, Jr. did the original subdivision of the township.

There was a stone recorded in 1910.

On 10-02-2000, Moseng Land Surveying dug with backhoe and found nothing. We set a 5/8" rerod with seal proportionate distance between section corners and 33' East of corner fence post. On line fell 7' West.

Doc# 240411 Fee: \$ 2 Pages

Office of County Recorder
Yellow Medicine County, Minnesota
I hereby certify that the within instrument
was filed on April 12, 2006 at 10:15 AM

Kay Zempel, Yellow Medicine County Recorder

BY *Dani Roblik* Deputy

N/C
Bueltel-Moseng Land Surveying
P.O. Box 32
Marshall, MN 56258

CERTIFICATE OF LOCATION OF GOVERNMENT CORNER

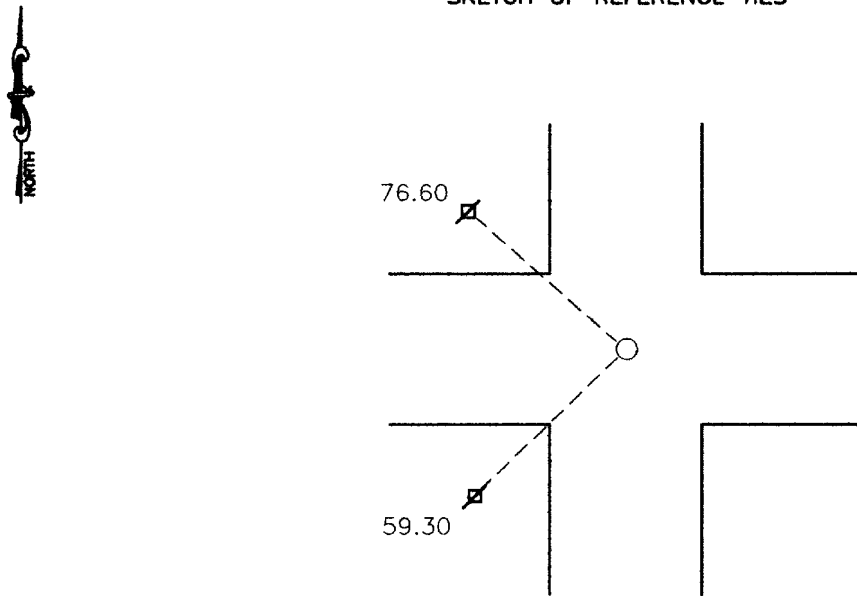
Northeast Corner of Section 22, Township 113, Range 39, 5th P.M.

STATE OF MINNESOTA, County of Yellow Medicine

At the corner location shown on the sketch:

- On 9-27-2000 found a Square cut stone with a 4" spike all the way down
DATE
- left monument as found, lowered monument, removed monument (explain)
- On _____ placed a _____
DATE

SKETCH OF REFERENCE TIES



Nail and seal in powerpole 59.30' Southwest

Nail and seal in power pole 76.60' Northwest

Statement of evidence relative to this corner location is on back of page.

I hereby certify that this document and the data contained herein was prepared by me or under my direct supervision.

Lyle C Moseny 12-21-00
SIGNATURE DATE

Registration No. 11943

- Land Surveyor, Professional Engineer
- County Surveyor, County Engineer

OFFICE OF THE COUNTY RECORDER

County of _____

I hereby certify that this document was filed in the Co. Recorders office at 10:50 A.M on the 13 day of August A.D. ~~19~~ 2001

County Recorder Kay Nerdahl

By Dail Rohlik, Deputy

DOCUMENT NO. 226596

Statement of Evidence

There was a stone recorded on record..

On 9-27-2000, Moseng Land Surveying found a square cut stone with a 4" spike all the way down.

CERTIFICATE OF LOCATION OF GOVERNMENT CORNER

East quarter Corner of Section 22, Township 113, Range 39, 5th P.M.

STATE OF MINNESOTA, County of Yellow Medicine

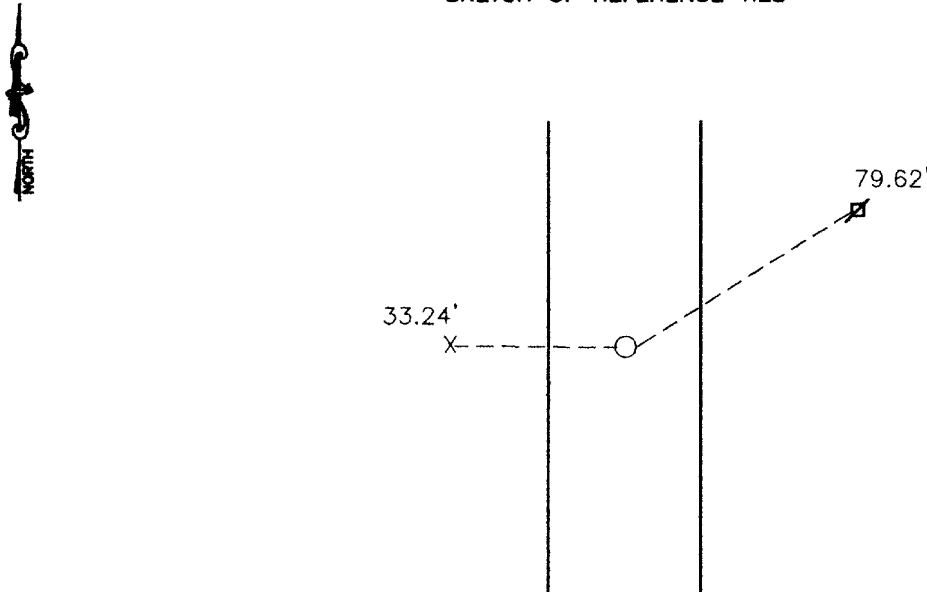
At the corner location shown on the sketch:

On 10-02-2000 found a Nothing
DATE

left monument as found, lowered monument, removed monument (explain)

On 10-02-2000 placed a 5/8" rerod with a seal #11943
DATE

SKETCH OF REFERENCE TIES



Nail and seal in cut off power pole (corner fence post) 33.24' West

Nail and seal in power pole 79.62' Northeast

Statement of evidence relative to this corner location is on back of page.

I hereby certify that this document and the data contained herein was prepared by me or under my direct supervision.

Lyle C. Mooring 12-21-00
SIGNATURE DATE

Registration No. 11943

Land Surveyor, Professional Engineer
 County Surveyor, County Engineer

OFFICE OF THE COUNTY RECORDER

County of

I hereby certify that this document was filed in the Co. Recorders office at 11:00 A.M on the 13 day of August A.D. 2001

County Recorder Kay Nerdahl

By Lyle Rohlik, Deputy

DOCUMENT NO. 226598

Statement of Evidence

There was a stone recorded in 1910.

On 10-02-2000, Moseng Land Surveying dug with backhoe and found nothing. We set a 5/8" rerod with seal proportionate distance between section corners and 33' East of corner fence post. On line fell 7' West.

CERTIFICATE OF LOCATION OF GOVERNMENT CORNER

North quarter _____ Corner of Section 23 , Township 113 , Range 39 , 5th P.M.

STATE OF MINNESOTA, County of Yellow Medicine

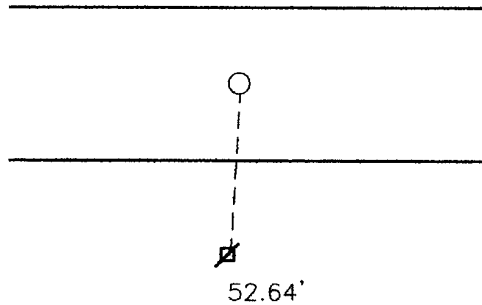
At the corner location shown on the sketch:

On 10-02-2000 found a Nothing
DATE

left monument as found, lowered monument, removed monument (explain)

On 10-02-2000 placed a 5/8" rerod w/seal #11943
DATE

SKETCH OF REFERENCE TIES



Nail and seal in powerpole 52.64' South

Statement of evidence relative to this corner location is on back of page.

I hereby certify that this document and the data contained herein was prepared by me or under my direct supervision.

Ryle C. Moring 12/21/00
SIGNATURE DATE

Registration No. 11943

- Land Surveyor, Professional Engineer
 County Surveyor, County Engineer

OFFICE OF THE COUNTY RECORDER
County of _____

I hereby certify that this document was filed in the Co. Recorders office at 10:55 A.M on the 13 day of August A.D. 2001

County Recorder Kay Nerdahl

By *Paul Rohrk*, Deputy

DOCUMENT NO. 226597

Statement of Evidence

In 1910 John Norgared found stone and stake.

On 10-02-2000, Moseng Land Surveying dug with backhoe and found nothing. We set a 5/8" rerod with a seal #11943 on line and proportionate according to survey dated June 13, 1910 by John Norgared.

CERTIFICATE OF LOCATION OF GOVERNMENT CORNER

EAST QUARTER Corner of Section 23, Township 113 N., Range 39 W., 5th P.M.

STATE OF MINNESOTA, County of YELLOW MEDICINE

At the corner location shown on the sketch:

■ On 7/11/89 found a DECAYED WOOD STAKE, DOWN 2.5'
DATE

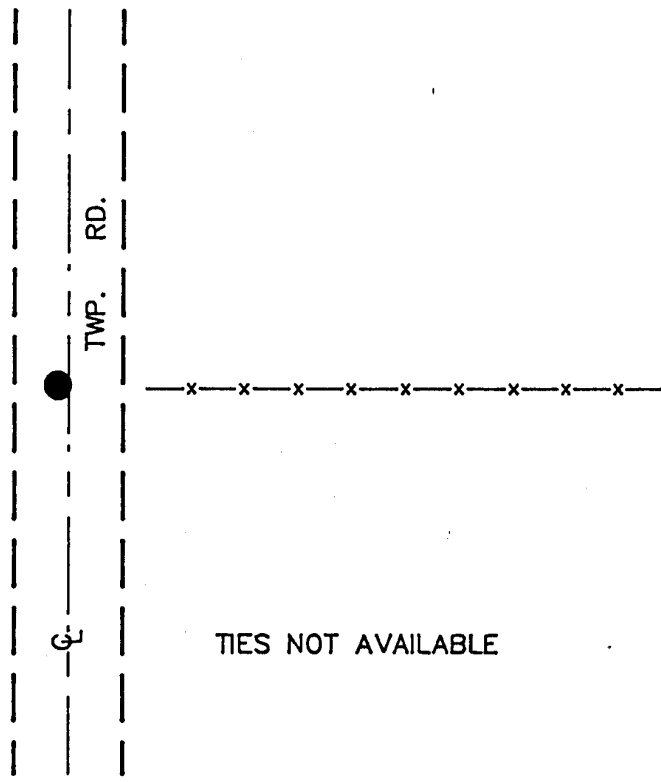
■ left monument as found, □ lowered monument, □ removed monument (explain)

■ On 7/11/89 Placed a 1 1/4" X 1 1/4" X 20" PERFORATED STEEL TUBE WITH
DATE ALUMINUM CAP STAMPED "DNR SURVEY MARKER", DOWN 0.5'

SKETCH OF REFERENCE TIES



NOTE:
PLACED 3/4" X 24" IRON ROD
INSIDE MONUMENT DOWN 0.5'
MONUMENT IS
3.0' WEST CL N-S ROAD



Statement of evidence relative to this corner location is on back of page. 7/25/89
G-225

I hereby certify that this document and the data contained herein was prepared by me or under my direct supervision.

Louell R. Pommeroy Jr. 8-2-89
SIGNATURE DATE

Registration No. 17005

- Land Surveyor, □ Professional Engineer
□ County Surveyor, □ County Engineer

OFFICE OF THE COUNTY RECORDER
County of Yellow Medicine

I hereby certify that this document was filed in the Co. recorders office at 11:05 A. .M. on the 4 day of August A.D., 1989

County Recorder Arnold Osoede
By _____, Deputy

DOCUMENT NO. 195717

East Quarter Corner Section 23, Township 113 North, Range 39 West

The DNR Bureau of Engineering contacted the following offices for information on this corner:

MN Secretary of State
Yellow Medicine County Recorder and Highway Engineer
Moseng Land Surveying at Marshall
KBM at Redwood Falls

- 1864 The U.S. General Land Office notes in the Secretary of State's Office show a post set in a mound for the corner.
- 1901 Surveyor's Record Book B, from the County Recorder's Office, contains a collection of what was found at government section corners by John Norgaard, County Surveyor, in a township re-monumentation survey. Norgaard states, on page 219, the northeast corner of Section 23 was set equal distance from this corner, a quarter post, and the other adjoining quarter corners.
- 1910 Surveyor's Record Book, from the County Recorder's Office, contains a survey by John Norgaard, County Surveyor. On page 215, this corner is described as a found stake set by Norgaard in the government mound 10 years ago. Corner is shown to measure:
2652 ft. from the northeast corner Section 23
2650 ft. from the northeast corner Section 26
- 1989 July 11, the DNR Bureau of Engineering hired a backhoe operated by Wyatt Bendix of Echo to dig for evidence of this corner. Found the remains of a decayed wood stake down 2.5 ft.. Stake was found to be:
in line with fence east
3.0 ft. west of centerline north-south road
2655.95 ft. from the northeast corner Section 23
2652.05 ft. from the northeast corner Section 26
Placed a 3/4" by 24" iron rod in the center of the stake remains and a DNR Survey Marker with 3/4" by 24" iron rod within down 0.5 ft. over the stake remains.

Analysis of the available information led the DNR Bureau of Engineering to conclude that the found remains of the stake mark the location of the corner.

CERTIFICATE OF LOCATION OF GOVERNMENT CORNER

NORTHEAST Corner of Section 23, Township 113 N., Range 39 W., 5th P.M.

STATE OF MINNESOTA, County of YELLOW MEDICINE

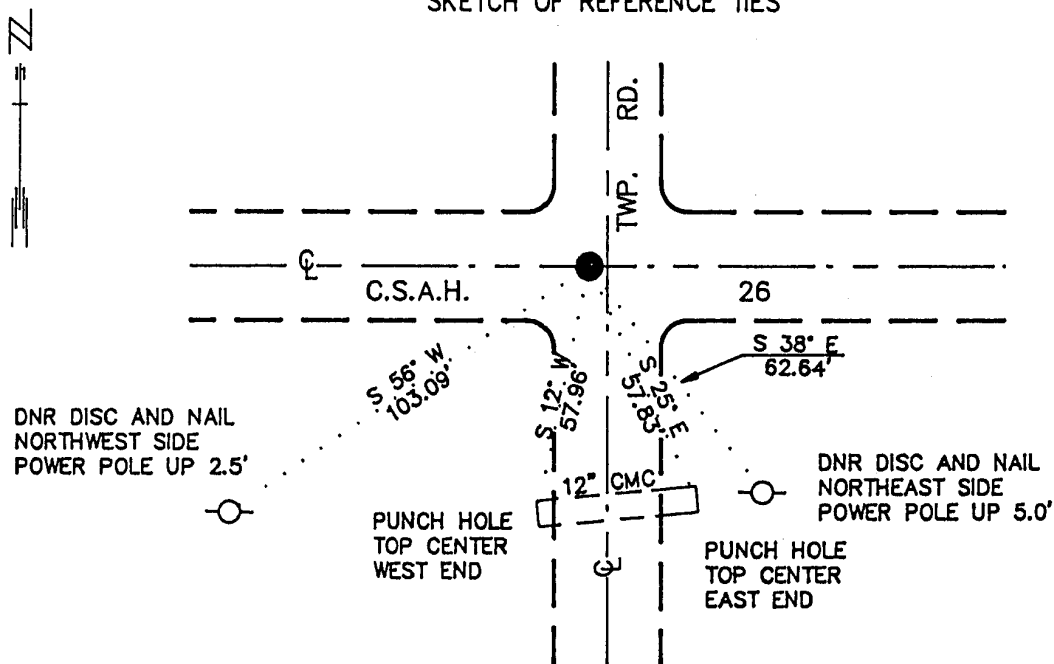
At the corner location shown on the sketch:

■ On 7/11/89 found a 7"X 7"X 30" STONE, DOWN 2.3'
DATE

■ left monument as found, □ lowered monument, □ removed monument (explain)

■ On 7/11/89 Placed a 1 1/4"X 1 1/4"X 20" PERFORATED STEEL TUBE WITH
DATE ALUMINUM CAP STAMPED "DNR SURVEY MARKER", DOWN 0.5'

SKETCH OF REFERENCE TIES



NOTE:
PLACED 3/4"X 18" IRON ROD
INSIDE MONUMENT DOWN 0.5'
MONUMENT IS
2.0' WEST CL N-S ROAD

BEARINGS OBSERVED WITH COMPASS

Statement of evidence relative to this corner location is on back of page.

7/25/89
G-225

I hereby certify that this document and the data contained herein was prepared by me or under my direct supervision.

Lowell R. Pommeroy Jr. 8-2-89
SIGNATURE DATE

Registration No. 17005

■ Land Surveyor, □ Professional Engineer
□ County Surveyor, □ County Engineer

OFFICE OF THE COUNTY RECORDER
County of Yellow Medicine

I hereby certify that this document was filed in the Co. recorders office at 11:00 A.M. on the 4 day of August A.D., 1989

County Recorder Norman J. Quinn
By _____, Deputy
DOCUMENT NO. 195716

Northeast Corner Section 23, Township 113 North, Range 39 West

The DNR Bureau of Engineering contacted the following offices for information on this corner:

MN Secretary of State
Yellow Medicine County Recorder and Highway Engineer
Moseng Land Surveying at Marshall
KBM at Redwood Falls

- 1864 The U.S. General Land Office notes in the Secretary of State's Office show a post set in a mound for the corner.
- 1901 Surveyor's Record Book B, from the County Recorder's Office, contains a collection of what was found at government section corners by John Norgaard, County Surveyor, in a township re-monumentation survey. Norgaard states, on page 219, "located at equal distance between the east 1/4 post Section 14, the east 1/4 post Section 23, the north 1/4 post Section 23 and the north 1/4 post Section 24. Set top of monument 2" above ground." A 6" by 6" by 24" jasper granite monument was set at this location.
- 1910 Surveyor's Record Book, from the County Recorder's Office, contains a survey by John Norgaard, County Surveyor. On page 215, this corner is shown to measure:
2652 ft. from the east quarter corner Section 23
5302 ft. from the northeast corner Section 26
No mention of a monument is made.
- 1941 A government corner tie book, from the County Highway Engineer's Office, shows the center of a monument down 12" with a N.H. top. Three reference ties are shown to the corner.
- 1965 A government corner tie book, from the County Highway Engineer's Office, shows this corner was assumed. "Used one old tie and assumed corner. Dug hole 3 ft. deep but in wrong spot. When frost is gone, dig again before construction." Five reference ties are shown to this corner. From highway stationing, this corner measures:
2658.6 ft. from the north quarter corner Section 24
5316.6 ft. from the northeast corner Section 24
- 1989 July 11, the DNR Bureau of Engineering hired a backhoe operated by Wyatt Bendix of Echo to dig for evidence of this corner. Found two 60d spikes over an 8" by 5" by 11" stone over a 7" by 7" by 30" stone, which was down 2.3 ft. No evidence of record ties were found. Discarded the two spikes and smaller stone and placed a 3/4" by 24" iron rod on the north side of the large stone flush with its top. Set a DNR Survey Marker with a 3/4" by 18" iron rod within down 0.5 ft. over the center of the 7" by 7" by 30" stone. Stone was found to measure:
2658.03 ft. from the north quarter corner Section 24
2655.95 ft. from the east quarter corner Section 23

Analysis of the available information led the DNR Bureau of Engineering to conclude that the found 7" by 7" by 30" stone marks the location of the corner.

CERTIFICATE OF LOCATION OF GOVERNMENT CORNER

#4 MEANDER Corner of Section 24, Township 113 N., Range 39 W., 5th P.M.

STATE OF MINNESOTA, County of YELLOW MEDICINE

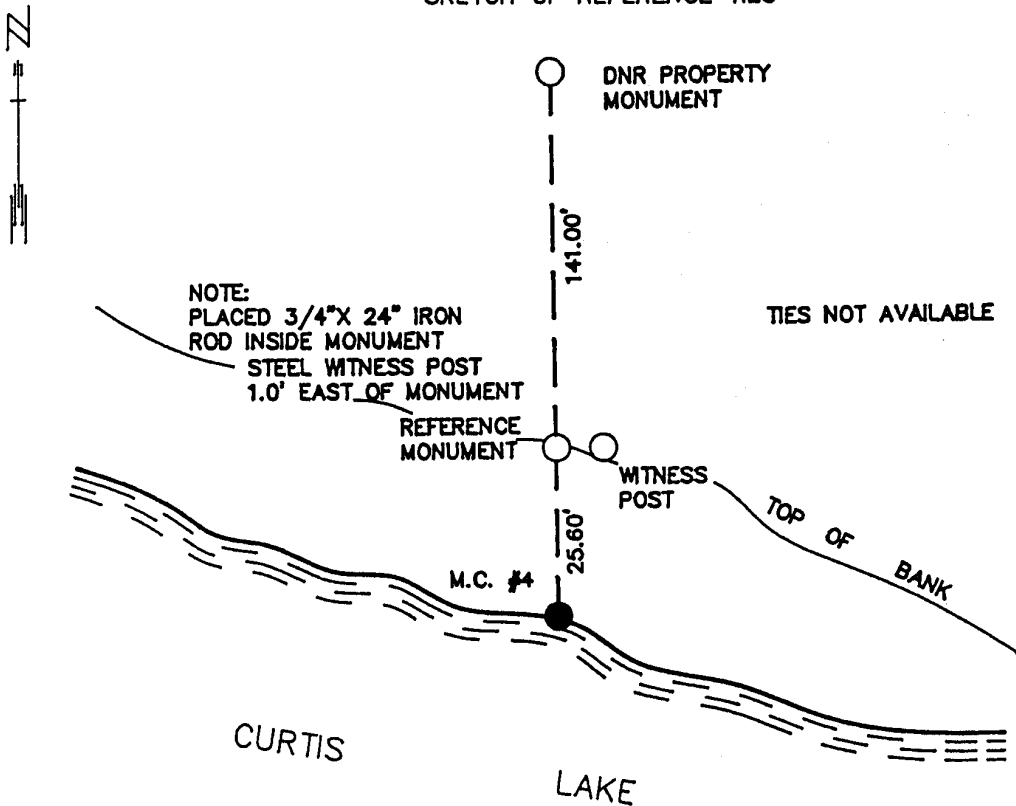
At the corner location shown on the sketch:

On _____ found a _____
DATE

left monument as found, lowered monument, removed monument (explain)

On 7/19/89 Placed a 1 1/4" X 1 1/4" X 20" PERFORATED STEEL TUBE WITH
DATE ALUMINUM CAP STAMPED "DNR SURVEY MARKER", UP 0.3'

SKETCH OF REFERENCE TIES



Statement of evidence relative to this corner location is on back of page.

7/27/89
G-225

I hereby certify that this document and the data contained herein was prepared by me or under my direct supervision.

Lowell R. Pommeroy 8-2-89
SIGNATURE DATE

Registration No. 17005

- Land Surveyor, Professional Engineer
- County Surveyor, County Engineer

OFFICE OF THE COUNTY RECORDER
County of Yellow Medicine

I hereby certify that this document was filed in the Co. recorders office at 11:30 A.M. on the 4 day of August A.D., 1989

County Recorder Norman J. Grotz
By _____, Deputy

DOCUMENT NO. 195722

Meander Corner #4 of Section 24, Township 113 North, Range 39 West

The DNR Bureau of Engineering contacted the following offices for information on this corner:

MN Secretary of State
Yellow Medicine County Recorder and Highway Engineer
Moseng Land Surveying at Marshall
KBM at Redwood Falls

1857 The U.S. General Land Office notes in the Secretary of State's Office show the corner is a post, drove charred stake, built mound of earth and dug trench as per instructions.

1989 July, the DNR Bureau of Engineering computed the lost position for this corner and found it to measure:

1366.11 ft. from Meander Corner #3 of Section 24

1499.39 ft. from the northeast corner Section 24

Conducted a search for this corner, but found the lost falls in Curtis Lake.

Analysis of the available information led the DNR Bureau of Engineering to conclude that the lost position marks the location of the corner. Set a reference monument to this corner as shown.

CERTIFICATE OF LOCATION OF GOVERNMENT CORNER

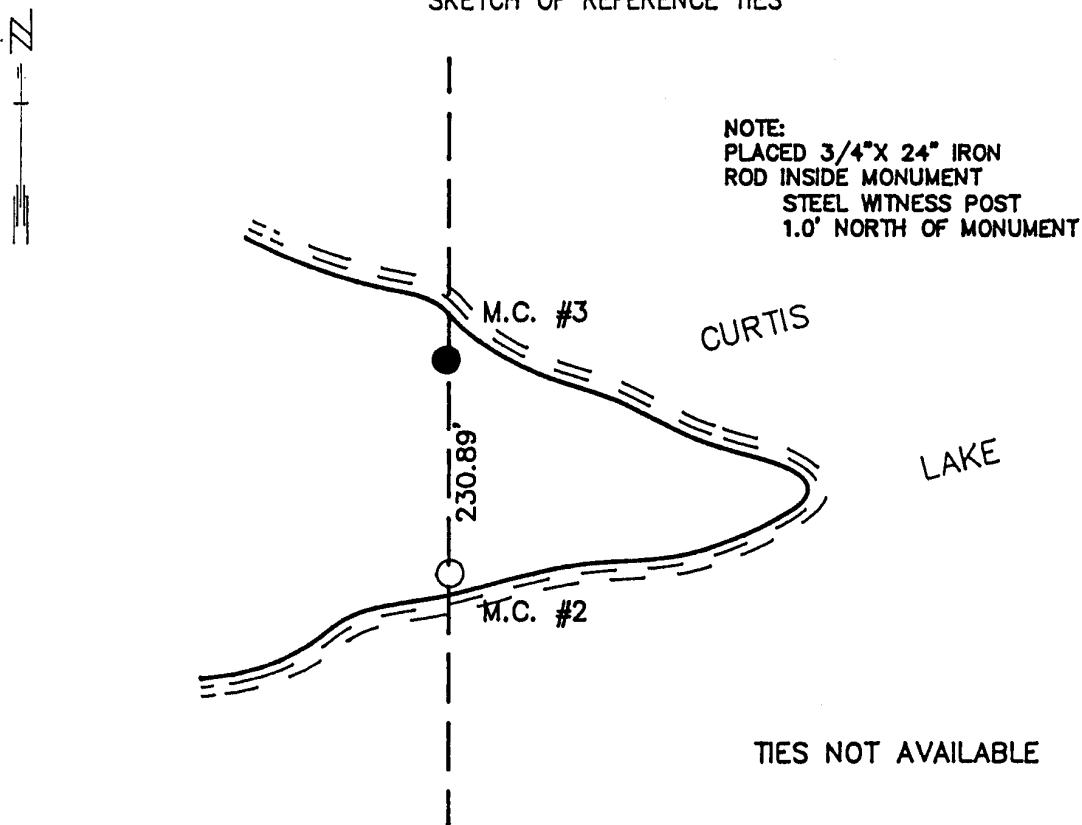
#3 MEANDER Corner of Section 24, Township 113 N., Range 39 W., 5th P.M.

STATE OF MINNESOTA, County of YELLOW MEDICINE

At the corner location shown on the sketch:

- On 7/17/89 found a CHARRED WOOD STAKE
DATE
- left monument as found, lowered monument, removed monument (explain)
- On 7/17/89 Placed a 1 1/4" X 1 1/4" X 20" PERFORATED STEEL TUBE WITH
DATE ALUMINUM CAP STAMPED "DNR SURVEY MARKER", DOWN 0.5'

SKETCH OF REFERENCE TIES



TIES NOT AVAILABLE

Statement of evidence relative to this corner location is on back of page.

7/27/89
G-225

I hereby certify that this document and the data contained herein was prepared by me or under my direct supervision

Lowell R. Pomeroy SIGNATURE 8-2-89 DATE

Registration No. 17005

- Land Surveyor, Professional Engineer
- County Surveyor, County Engineer

OFFICE OF THE COUNTY RECORDER

County of Yellow Medicine

I hereby certify that this document was filed in the Co. recorders office at 11:25 A.M. on the 4 day of August A.D., 1989

County Recorder Tom A. Gaddan

By _____, Deputy

DOCUMENT NO. 195721

Meander Corner #3 of Section 24, Township 113 North, Range 39 West

The DNR Bureau of Engineering contacted the following offices for information on this corner:

MN Secretary of State
Yellow Medicine County Recorder and Highway Engineer
Moseng Land Surveying at Marshall
KBM at Redwood Falls

1857 The U.S. General Land Office notes in the Secretary of State's Office show the corner is a post, drove charred stake, built mound of earth and dug trench as per instructions.

1989 July 17, the DNR Bureau of Engineering hired a backhoe operated by Wyatt Bendix of Echo to dig for evidence of this corner. Found a piece of a charred wood stake at the top of lake bank. Did not find any other pieces of wood or anything else that would discredit the found wood stake. Soil conditions at this corner area of the sand variety, relatively undisturbed. Wood stake was found to measure:

2865.50 ft. from the northeast corner Section 24
5079.50 ft. from the east quarter corner Section 25
1.28 ft. east of a straight line between these above mentioned government corners

Analysis of the available information led the DNR Bureau of Engineering to conclude that the found charred wood stake is the one set by the GLO and location of the corner.

CERTIFICATE OF LOCATION OF GOVERNMENT CORNER

#2 MEANDER Corner of Section 24, Township 113 N., Range 39 W., 5th P.M.

STATE OF MINNESOTA, County of YELLOW MEDICINE

At the corner location shown on the sketch:

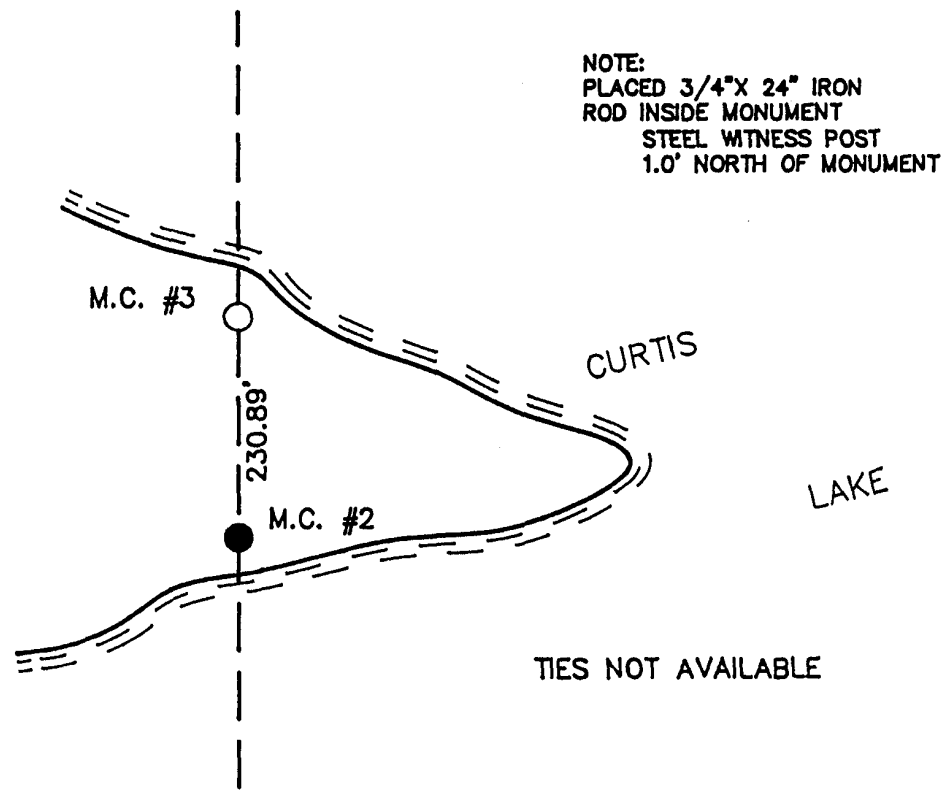
On _____ found a _____
DATE

left monument as found, lowered monument, removed monument (explain)

On 7/19/89 Placed a 1 1/4" X 1 1/4" X 20" PERFORATED STEEL TUBE WITH
DATE ALUMINUM CAP STAMPED "DNR SURVEY MARKER", UP 0.2'



SKETCH OF REFERENCE TIES



Statement of evidence relative to this corner location is on back of page.

7/27/89
G-225

I hereby certify that this document and the data contained herein was prepared by me or under my direct supervision.

Lowell R. Pommeroy 8-2-89
SIGNATURE DATE

Registration No. 17005

- Land Surveyor, Professional Engineer
- County Surveyor, County Engineer

OFFICE OF THE COUNTY RECORDER
County of Yellow Medicine

I hereby certify that this document was filed in the Co. recorders office at 11:20 A .M. on the 4 day of August A.D., 1989

County Recorder Norm J. Gadow
By _____, Deputy

DOCUMENT NO. 195720

Meander Corner #2 of Section 24, Township 113 North, Range 39 West

The DNR Bureau of Engineering contacted the following offices for information on this corner:

MN Secretary of State
Yellow Medicine County Recorder and Highway Engineer
Moseng Land Surveying at Marshall
KBM at Redwood Falls

1857 The U.S. General Land Office notes in the Secretary of State's Office show the corner marked with a wood post and recorded the following bearing trees:

Elm, 20 inch diameter bears N. 61° E., 16 links
Ash, 7 inch diameter bears S. 51½° W., 29 links

1989 July, the DNR Bureau of Engineering conducted a search for this corner, but found nothing, no evidence of the government bearing trees. Computed the lost position for this corner and found it to measure:

230.89 ft. from MC #3 of Section 24
4848.62 ft. from the east quarter corner Section 25

July 17, the DNR Bureau of Engineering hired a backhoe operated by Wyatt Bendix of Echo to dig for evidence of this corner. Dug a 12 ft. north-south by 16 ft. east-west hole to a depth of 2 ft., around the lost position, but found nothing. Lost position falls at the top of lake bank of Curtis Lake.

Analysis of the available information led the DNR Bureau of Engineering to conclude that the lost position marks the location of the corner.

CERTIFICATE OF LOCATION OF GOVERNMENT CORNER

NORTH QUARTER Corner of Section 24, Township 113 N., Range 39 W., 5th P.M.

STATE OF MINNESOTA, County of YELLOW MEDICINE

At the corner location shown on the sketch:

On 7/11/89 found a 60d SPIKE, FLUSH
DATE

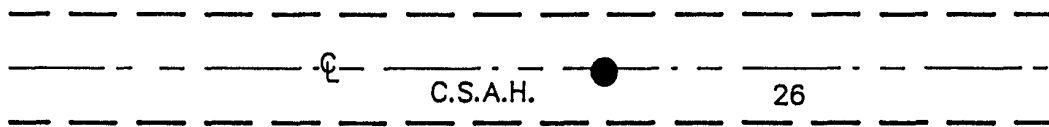
left monument as found, lowered monument, removed monument (explain)

On 7/11/89 Placed a 1 1/4" X 1 1/4" X 20" PERFORATED STEEL TUBE WITH
DATE ALUMINUM CAP STAMPED "DNR SURVEY MARKER", DOWN 0.5'

SKETCH OF REFERENCE TIES



NOTE:
PLACED 3/4" X 24" IRON ROD
INSIDE MONUMENT DOWN 0.5'
MONUMENT IS
5.5' WEST TRANSIENT BALK



TIES NOT AVAILABLE

Statement of evidence relative to this corner location is on back of page. 7/25/89
G-225

I hereby certify that this document and the data contained herein was prepared by me or under my direct supervision.

Laurel R. Pomeroy Jr. 8-2-89
SIGNATURE DATE

Registration No. 17005

- Land Surveyor, Professional Engineer
 County Surveyor, County Engineer

OFFICE OF THE COUNTY RECORDER
County of Yellow Medicine

I hereby certify that this document was filed in the Co. recorders office at 11:15 A.M. on the 4 day of August A.D., 1989

County Recorder Norm J. Godwin

By _____, Deputy

DOCUMENT NO. 195719

North Quarter Corner Section 24, Township 113 North, Range 39 West

The DNR Bureau of Engineering contacted the following offices for information on this corner:

MN Secretary of State
Yellow Medicine County Recorder and Highway Engineer
Moseng Land Surveying at Marshall
KBM at Redwood Falls

- 1864 The U.S. General Land Office notes in the Secretary of State's Office show a post set in a mound for the corner.
- 1901 Surveyor's Record Book B, from the County Recorder's Office, contains a collection of what was found at government section corners by John Norgaard, County Surveyor, in a township re-monumentation survey. Norgaard states, on page 219, the northeast corner of Section 23 was set equal distance from this corner, a quarter post, and the other adjoining quarter corners.
- 1965 A government corner tie book, from the County Highway Engineer's Office, shows this corner was assumed. Three reference ties are shown. From highway stationing, this corner measures:
2658 ft. from the northeast corner Section 24
2658.6 ft. from the northeast corner Section 23
- 1989 July 11, the DNR Bureau of Engineering hired a backhoe operated by Wyatt Bendix of Echo to dig for evidence of this corner. Found a 60d spike at the surface on the center line of an east-west road, in line with a fence north. Dug a 5 ft. north-south by 10 ft. east-west hole to a depth of 4 feet, but found nothing. Area of corner appears to be in a cut section of road. Intersection of road and fence, mentioned previously, was found to measure:
2656.56 ft. from the northeast corner Section 24
2658.03 ft. from the northeast corner Section 23
Discarded the spike and set a DNR Survey Marker and 3/4" by 24" iron rod within down 0.5 ft. at above mentioned intersection.

Analysis of the available information led the DNR Bureau of Engineering to conclude that the above mentioned intersection of road and fence marks the location of the corner.

CERTIFICATE OF LOCATION OF GOVERNMENT CORNER

NORTHEAST Corner of Section 24, Township 113 N., Range 39 W., 5 th P.M.

STATE OF MINNESOTA, County of YELLOW MEDICINE

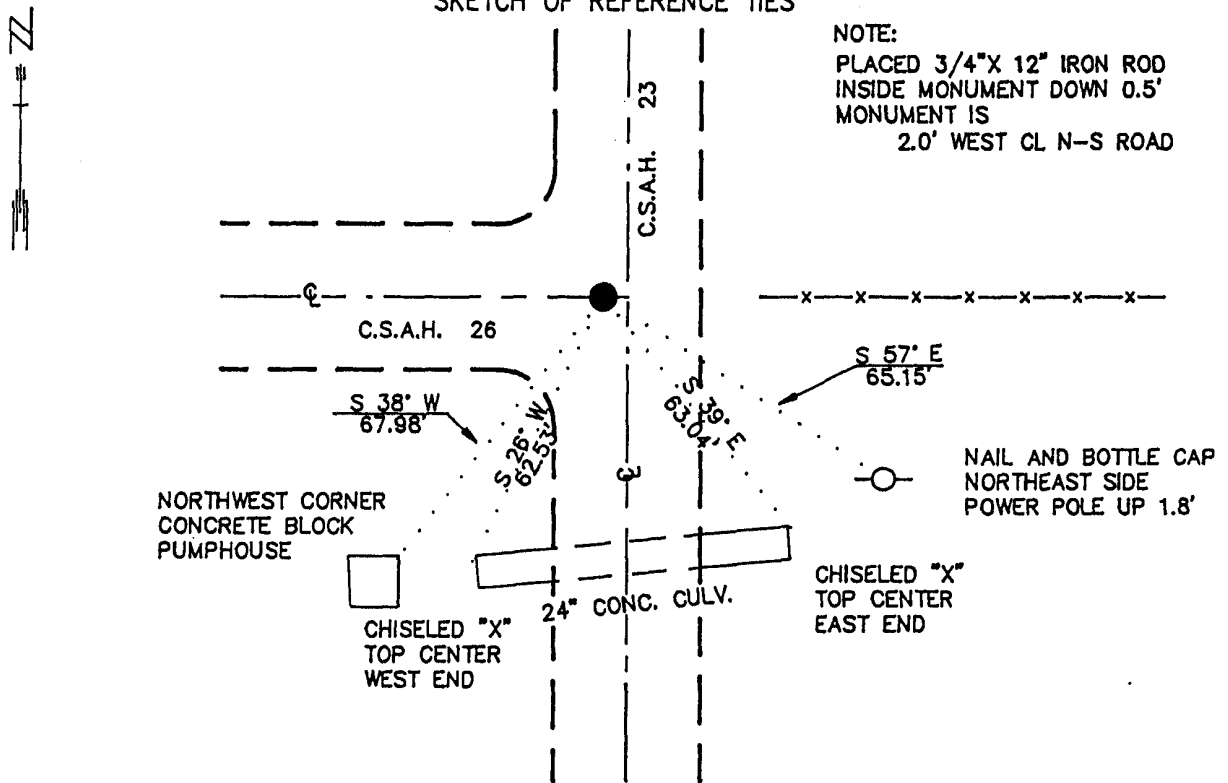
At the corner location shown on the sketch:

■ On 7/11/89 found a 6"X 6"X 25" STONE, DOWN 3.8'
DATE

■ left monument as found, □ lowered monument, □ removed monument (explain)

■ On 7/11/89 Placed a 1 1/4"X 1 1/4"X 20" PERFORATED STEEL TUBE WITH
DATE ALUMINUM CAP STAMPED "DNR SURVEY MARKER", DOWN 0.5'

SKETCH OF REFERENCE TIES



BEARINGS OBSERVED WITH COMPASS

Statement of evidence relative to this corner location is on back of page.

7/25/89
G-225

I hereby certify that this document and the data contained herein was prepared by me or under my direct supervision.

Donald R. Pommeroy 8-2-89
SIGNATURE DATE

Registration No. 17005

- Land Surveyor, Professional Engineer
- County Surveyor, County Engineer

OFFICE OF THE COUNTY RECORDER
County of Yellow Medicine

I hereby certify that this document was filed in the Co. recorders office at 11:10 A.M. on the 4 day of August A.D., 1989

County Recorder Norman G. Grew
By _____, Deputy
DOCUMENT NO. 195718

Northeast Corner Section 24, Township 113 North, Range 39 West

The DNR Bureau of Engineering contacted the following offices for information on this corner:

MN Secretary of State
Yellow Medicine County Recorder and Highway Engineer
Moseng Land Surveying at Marshall
KBM at Redwood Falls

1857 The U.S. General Land Office notes in the Secretary of State's Office show the corner is a post, drove charred stake, built mound of earth and dug trench as per instructions.

1901 Surveyor's Record Book B, from the County Recorder's Office, contains a collection of what was found at government section corners by John Norgaard, County Surveyor, in a township re-monumentation survey. Norgaard states, on page 208, "located according to a survey made by me 5 years ago when the government corners were plain. Set top of monument 2" above ground." A 6" by 6" by 24" jasper granite monument was set at this location.

1941 A government corner tie book, from the County Highway Engineer's Office, shows a regular monument 18" deep with two stones on top. Five reference ties are shown to this corner.

1964 June, the DNR Bureau of Engineering found the corner as described by the county ties. The lowest monument was found down 30" with two stones on top of it. Placed a railroad spike over the stones at the surface of the road. Four reference ties are shown.

1965 A government corner tie book, from the County Highway Engineer's Office, shows located iron pin placed over monument by state last year for public access. Four reference ties are shown to this corner. From highway stationing, this corner measures:

2658 ft. from the north quarter corner Section 24
5316.6 ft. from the northeast corner Section 23

1979 A government corner tie book, from the County Highway Engineer's Office, shows located granite monument 18" deep with 2 field stones, railroad spike and two 60d spikes on top. Four reference ties are shown to this monument.

1989 July 11, the DNR Bureau of Engineering hired a backhoe operated by Wyatt Bendix of Echo to dig for evidence of this corner. Found an 18" bolt over an 11" by 10" by 6" stone and railroad spike over a 6" by 6" by 25" stone, which was down 3.8 ft. The square stone was leaning slightly east, plumbed same and placed a 3/4" by 24" iron rod on its north side flush with its top. Discarded other found monuments and placed a DNR Survey Marker with 3/4" by 12" iron rod within down 0.5 over the squared stone. Stone was found to measure:

2656.56 ft. from the north quarter corner Section 24
2865.50 ft. from MC #3 of Section 24

Analysis of the available information led the DNR Bureau of Engineering to conclude that the found 6" by 6" by 25" stone marks the location of the corner.

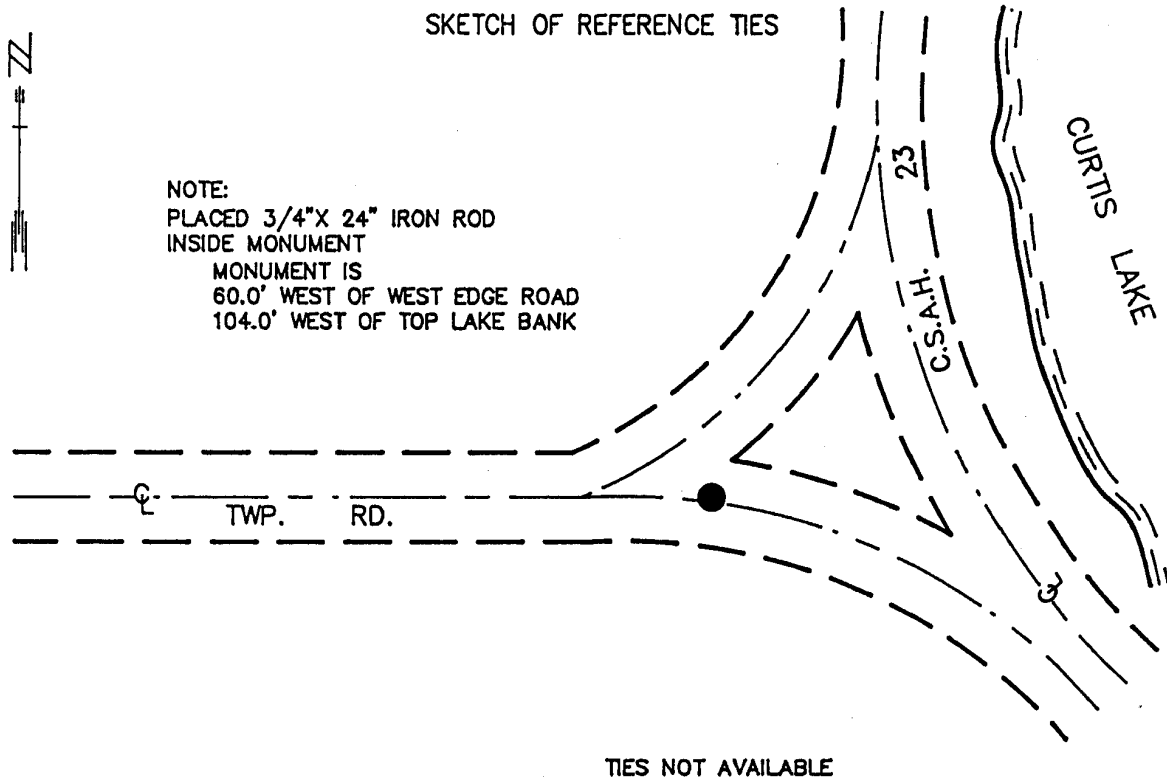
CERTIFICATE OF LOCATION OF GOVERNMENT CORNER

#15 MEANDER Corner of Section 25, Township 113 N., Range 39 W., 5th P.M.

STATE OF MINNESOTA, County of YELLOW MEDICINE

At the corner location shown on the sketch:

- On _____ found a _____
DATE
- left monument as found, lowered monument, removed monument (explain)
- On 7/18/89 Placed a 1 1/4" X 1 1/4" X 20" PERFORATED STEEL TUBE WITH
DATE ALUMINUM CAP STAMPED "DNR SURVEY MARKER", DOWN 0.5'



Statement of evidence relative to this corner location is on back of page.

7/26/89
G-225

I hereby certify that this document and the data contained herein was prepared by me or under my direct supervision.

Lowell R. Pomeroy 8-2-89
SIGNATURE DATE

Registration No. 17005

- Land Surveyor, Professional Engineer
- County Surveyor, County Engineer

OFFICE OF THE COUNTY RECORDER
County of Yellow Medicine

I hereby certify that this document was filed in the Co. recorders office at 11:50 A.M. on the 4 day of August A.D., 1989

County Recorder nm d codder
By _____, Deputy

DOCUMENT NO. 195726

Meander Corner #15 of Section 25, Township 113 North, Range 39 West

The DNR Bureau of Engineering contacted the following offices for information on this corner:

MN Secretary of State
Yellow Medicine County Recorder and Highway Engineer
Moseng Land Surveying at Marshall
KBM at Redwood Falls

1864 The U.S. General Land Office notes in the Secretary of State's Office show a post set in a mound for the corner.

1901 Surveyor's Record Book B, from the County Recorder's Office, contains a collection of what was found at government section corners by John Norgaard, County Surveyor, in a township re-monumentation survey. Norgaard states, on page 215, the northeast corner of Section 25 is the lake, therefore "Set the monument in the government M.C. on the west side of lake between Sections 24 and 25." A 6" by 6" by 24" jasper granite monument was set at this location.

1989 July, the DNR Bureau of Engineering computed a position for this corner proportionately from the north quarter corner Section 25 and on the center line of an east-west road. Computed position measures:

2098.46 ft. from the north quarter corner Section 25

July 17, the DNR Bureau of Engineering hired a backhoe operated by Wyatt Bendix of Echo to dig for evidence of this corner. Dug an 8 ft. north-south by 14 ft. east-west by 3 ft. deep hole around the above mentioned computed position. Found only a 1" by 3" piece of wood, not very old, which was discarded. Did not find any stones.

Analysis of the available information led the DNR Bureau of Engineering to conclude that the computed position, proportionately from the north quarter corner Section 25 and on the centerline of the road, marks the location of the corner.

CERTIFICATE OF LOCATION OF GOVERNMENT CORNER

#1 MEANDER Corner of Section 25, Township 113 N., Range 39 W., 5th P.M.

STATE OF MINNESOTA, County of YELLOW MEDICINE

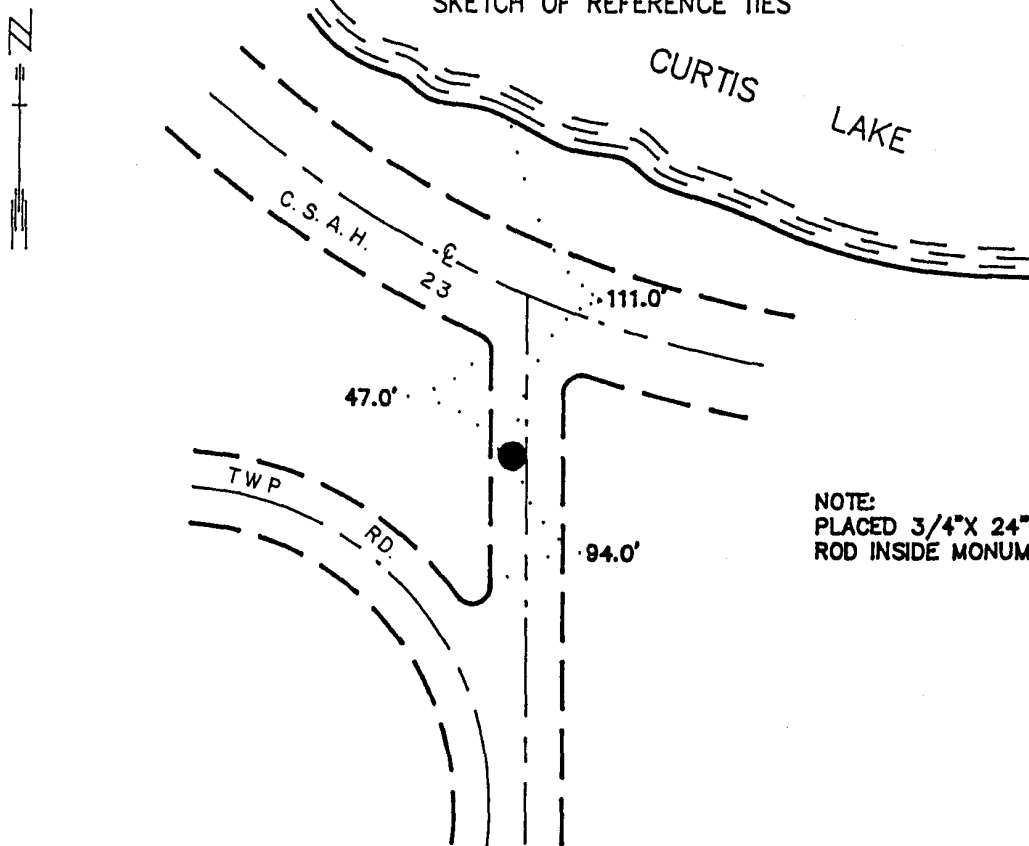
At the corner location shown on the sketch:

On _____ found a _____
DATE

left monument as found, lowered monument, removed monument (explain)

On 7/19/89 Placed a 1 1/4" X 1 1/4" X 20" PERFORATED STEEL TUBE WITH
DATE ALUMINUM CAP STAMPED "DNR SURVEY MARKER", DOWN 0.7'

SKETCH OF REFERENCE TIES



NOTE:
PLACED 3/4" X 24" IRON
ROD INSIDE MONUMENT

Statement of evidence relative to this corner location is on back of page. 7/27/89
G-225

I hereby certify that this document and the data contained herein was prepared by me or under my direct supervision.

Luell R. Pomeroy 8-2-89
SIGNATURE DATE

Registration No. 17005
 Land Surveyor, Professional Engineer
 County Surveyor, County Engineer

OFFICE OF THE COUNTY RECORDER
County of Yellow Medicine

I hereby certify that this document was filed in the Co. recorders office at 11:45 A.M. on the 4 day of August A.D., 19 89

County Recorder Norman Goodwin
By _____, Deputy
DOCUMENT NO. 195725

Meander Corner #1 of Section 25, Township 113 North, Range 39 West

The DNR Bureau of Engineering contacted the following offices for information on this corner:

MN Secretary of State
Yellow Medicine County Recorder and Highway Engineer
Moseng Land Surveying at Marshall
KBM at Redwood Falls

1857 The U.S. General Land Office notes in the Secretary of State's Office show the corner is a post, drove charred stake, built mound of earth and dug trench as per instructions.

1989 July, the DNR Bureau of Engineering computed the lost position for this corner and found it to measure:

2328.66 ft. from the east quarter corner Section 25

2750.84 ft. from Meander Corner #3 of Section 24

July 17, the DNR Bureau of Engineering hired a backhoe operated by Wyatt Bendix of Echo to dig for evidence of this corner. Dug a 16 ft. north-south by 10 ft. east-west hole to a depth of 1 ft. around the lost position, but found nothing. Corner area appears to be in a cut section of road.

Analysis of the available information led the DNR Bureau of Engineering to conclude that the lost position marks the location of the corner.

CERTIFICATE OF LOCATION OF GOVERNMENT CORNER

EAST QUARTER Corner of Section 25, Township 113 N., Range 39 W., 5th P.M.

STATE OF MINNESOTA, County of YELLOW MEDICINE

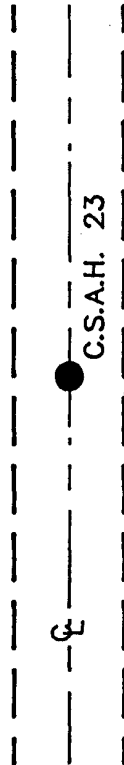
At the corner location shown on the sketch:

On 7/11/89 found a 60d SPIKE, FLUSH
DATE

left monument as found, lowered monument, removed monument (explain)

On 7/11/89 Placed a 1 1/4" X 1 1/4" X 20" PERFORATED STEEL TUBE WITH
DATE ALUMINUM CAP STAMPED "DNR SURVEY MARKER", DOWN 0.8'

SKETCH OF REFERENCE TIES



NOTE:
PLACED 3/4" X 24" IRON ROD
INSIDE MONUMENT DOWN 0.8'



TIES NOT AVAILABLE

Statement of evidence relative to this corner location is on back of page.

7/26/89
G-225

I hereby certify that this document and the data contained herein was prepared by me or under my direct supervision

Lowell B. Pommeroy 8-2-89
SIGNATURE DATE

Registration No. 17005

- Land Surveyor, Professional Engineer
 County Surveyor, County Engineer

OFFICE OF THE COUNTY RECORDER

County of Yellow Medicine

I hereby certify that this document was filed in the Co. recorders office at 11:40 A.M. on the 4 day of August A.D., 1989

County Recorder nm d g d d d

By _____, Deputy

DOCUMENT NO. 195724

East Quarter Corner Section 25, Township 113 North, Range 39 West

The DNR Bureau of Engineering contacted the following offices for information on this corner:

MN Secretary of State
Yellow Medicine County Recorder and Highway Engineer
Moseng Land Surveying at Marshall
KBM at Redwood Falls

1857 The U.S. General Land Office notes in the Secretary of State's Office show the corner is a post, drove charred stake, built mound of earth and dug trench as per instructions.

1989 July 11, the DNR Bureau of Engineering hired a backhoe operated by Wyatt Bendix of Echo to dig for evidence of this corner. Found a 60d spike at the intersection of a north-south road and fence line east. Dug a 12 ft. north-south by 6 ft. east-west hole, centered on the found spike, to a depth of 3 ft., but found nothing. According to Mrs. Hughs, 50 year old lifetime resident, the fence has been there all her life. Above mentioned road and fence intersection measures:

2675.57 ft. from the northeast corner Section 36

5079.50 ft. from Meander Corner #3 of Section 24

Also dug at a point 35 ft. south of this road and fence intersection. Dug a 16 ft. north-south by 6 ft. east-west hole, centered on the point 35 ft. south, to a depth of 4 ft., but found nothing.

Analysis of the available information led the DNR Bureau of Engineering to conclude that the above mentioned intersection of road and fence marks the location of the corner. Discarded the found spike and placed a DNR Survey Marker with 3/4" by 24" iron rod inside down 0.8 ft..

CERTIFICATE OF LOCATION OF GOVERNMENT CORNER

NORTH QUARTER Corner of Section 25, Township 113 N., Range 39 W., 5th P.M.

STATE OF MINNESOTA, County of YELLOW MEDICINE

At the corner location shown on the sketch:

■ On 7/11/89 found a DECAYED WOOD STAKE, DOWN 3.3'
DATE

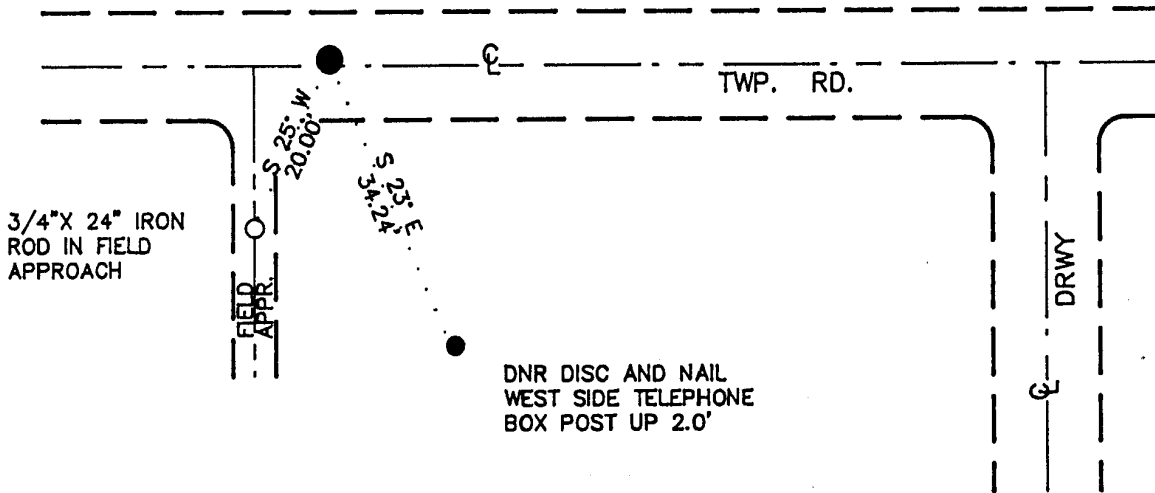
■ left monument as found, □ lowered monument, □ removed monument (explain)

■ On 7/11/89 Placed a 1 1/4" X 1 1/4" X 20" PERFORATED STEEL TUBE WITH
DATE ALUMINUM CAP STAMPED "DNR SURVEY MARKER", DOWN 0.5'

SKETCH OF REFERENCE TIES



NOTE:
PLACED 3/4" X 24" IRON
ROD INSIDE MONUMENT
MONUMENT IS
1.0' NORTH CL E-W ROAD
232.0' WEST CL DRWY SOUTH



BEARINGS OBSERVED WITH COMPASS

Statement of evidence relative to this corner location is on back of page.

7/28/89
G-225

I hereby certify that this document and the data contained herein was prepared by me or under my direct supervision.

Lowell R. Pomeroy 8-2-89
SIGNATURE DATE

Registration No. 17005

■ Land Surveyor, □ Professional Engineer
□ County Surveyor, □ County Engineer

OFFICE OF THE COUNTY RECORDER

County of Yellow Medicine

I hereby certify that this document was filed in the Co. recorders office at 11:35 A.M. on the 4 day of August A.D., 1989

County Recorder Norman J. Goodwin

By _____, Deputy

DOCUMENT NO. 195723

North Quarter Corner Section 25, Township 113 North, Range 39 West

The DNR Bureau of Engineering contacted the following offices for information on this corner:

MN Secretary of State
Yellow Medicine County Recorder and Highway Engineer
Moseng Land Surveying at Marshall
KBM at Redwood Falls

1864 The U.S. General Land Office notes in the Secretary of State's Office show a post set in a mound for the corner.

No A government corner tie book, from the County Highway Engineer's Office,
Date shows four reference ties to this corner. No mention of a monument is made.

1989 July 11, the DNR Bureau of Engineering hired a backhoe operated by Wyatt Bendix of Echo to dig for evidence of this corner. Found very old remains of a decayed wood stake down 3.3 ft. Did not find any other pieces of wood or anything else that would discredit the found remains. Wood stake measures:

2647.87 ft. from the northeast corner Section 26
1.0 ft. north of centerline east-west road

Placed a 3/4" by 24" iron rod in the center of the stake remains and a DNR Survey Marker and 3/4" by 24" iron rod within, down 0.5 ft. over the stake remains.

Analysis of the available information led the DNR Bureau of Engineering to conclude that the found wood stake remains mark the location of the corner. It is believed they are the remains of the government post.

CERTIFICATE OF LOCATION OF GOVERNMENT CORNER

North Quarter Corner of Section 26, Township 113, Range 39, 5th P.M.

STATE OF MINNESOTA, County of Yellow Medicine

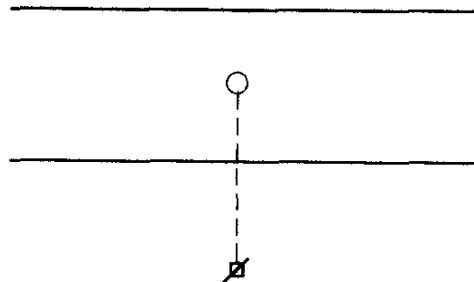
At the corner location shown on the sketch:

On 10-02-2000 found a Nothing

left monument as found, lowered monument, removed monument (explain)

On 10-02-2000 placed a 5/8" rerod w/seal #11943

SKETCH OF REFERENCE TIES



42.84

Nail and seal in power pole 42.84' South

Statement of evidence relative to this corner location is on back of page.

I hereby certify that this document and the data contained herein was prepared by me or under my direct supervision.

Lyle C Mosong 12/14/00
SIGNATURE DATE

Registration No. 11943

Land Surveyor, Professional Engineer
 County Surveyor, County Engineer

OFFICE OF THE COUNTY RECORDER
 County of _____

I hereby certify that this document was filed in the Co. Recorders office at 10:30 A.M on the 21st day of December A.D. 2000

County Recorder Kay Nerdahl

By Steve Rohlik, Deputy

DOCUMENT NO. 224803

*N/C Lyle Mosong, 703 Lawrence St.
 Mshl. 56258*

Statement of Evidence

There was a stone recorded in 1910.

On 10-02-2000 Moseng Land Surveying dug a 6x10' hole with a backhoe and found nothing. We were shown where the old fence line was before it was taken out by Dennis Preuss and we set it accordingly

CERTIFICATE OF LOCATION OF GOVERNMENT CORNER

NORTHEAST Corner of Section 26, Township 113 N., Range 39 W., 5th P.M.

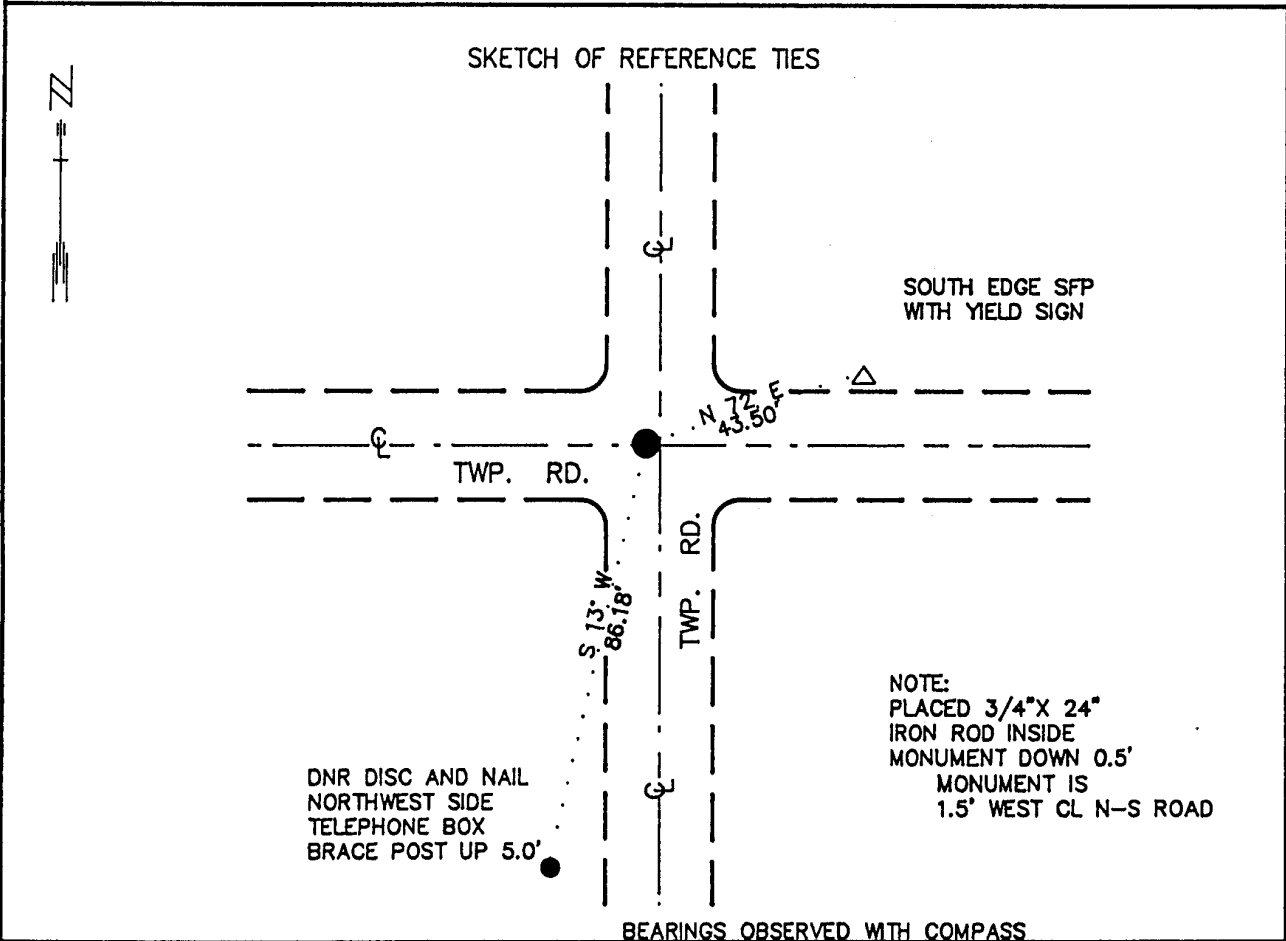
STATE OF MINNESOTA, County of YELLOW MEDICINE

At the corner location shown on the sketch:

■ On 7/11/89 found a 7"X 7"X 26" STONE DOWN 2.5'
DATE

■ left monument as found, □ lowered monument, □ removed monument (explain)

■ On 7/11/89 Placed a 1 1/4"X 1 1/4"X 20" PERFORATED STEEL TUBE WITH
DATE ALUMINUM CAP STAMPED "DNR SURVEY MARKER", DOWN 0.5'



Statement of evidence relative to this corner location is on back of page.

7/26/89
G-225

I hereby certify that this document and the data contained herein was prepared by me or under my direct supervision.

Lowell R. Pommeroy 8-2-89
SIGNATURE DATE

Registration No. 17005

- Land Surveyor, Professional Engineer
- County Surveyor, County Engineer

OFFICE OF THE COUNTY RECORDER
County of Yellow Medicine

I hereby certify that this document was filed in the Co. recorders office at 11:55 A. .M. on the 4 day of August A.D., 1989

County Recorder Norman Golden
By _____, Deputy

DOCUMENT NO. 195727

Northeast Corner Section 26, Township 113 North, Range 39 West

The DNR Bureau of Engineering contacted the following offices for information on this corner:

MN Secretary of State
Yellow Medicine County Recorder and Highway Engineer
Moseng Land Surveying at Marshall
KBM at Redwood Falls

- 1864 The U.S. General Land Office notes in the Secretary of State's Office show a post set in a mound for the corner.
- 1901 Surveyor's Record Book B, from the County Recorder's Office, contains a collection of what was found at government section corners by John Norgaard, County Surveyor, in a township re-monumentation survey. Norgaard states, on page 220, "Found stone in the government mound. Set top of monument level with ground." A 6" by 6" by 24" jasper granite monument was set at this location.
- 1910 Surveyor's Record Book, from the County Recorder's Office, contains a survey by John Norgaard, County Surveyor. On page 215, this corner is shown to measure:
2650 ft. from the east quarter corner Section 23
5302 ft. from the northeast corner Section 23
No mention of a monument is made.
- 1915 Surveyor's Record Book, from the County Recorder's Office, contains a survey by John Norgaard, County Surveyor. On page 343, this corner is described as a found jasper stone monument.
- 1941 A government corner tie book, from the County Highway Engineer's Office, shows the center of a monument is down 12". Four reference ties are shown to this corner.
- 1954 July, the DNR Bureau of Engineering found a chiseled "+" on the high point of a dark stone 1.0 ft. below road surface. Three county reference ties were also found. Monument is shown at the intersection of roads north-south and east-west.
- 1989 July 11, the DNR Bureau of Engineering hired a backhoe operated by Wyatt Bendix of Echo to dig for evidence of this corner. Found a 10" by 10" by 8" stone and wood hub over a 9" by 11" by 6" stone over a 7" by 7" by 26" stone which was down 2.5 ft. Stone was found to measure:
2647.87 ft. from the north quarter corner Section 25
2652.05 ft. from the east quarter corner Section 23
Placed a 3/4" by 24" iron rod on the north side of the lower square stone flush with its top. Discarded the other monuments and placed a DNR Survey Marker with a 3/4" by 24" iron rod inside down 0.5 ft. over the square stone.

Analysis of the available information led the DNR Bureau of Engineering to conclude that the found 7" by 7" by 26" stone marks the location of the corner.

CERTIFICATE OF LOCATION OF GOVERNMENT CORNER

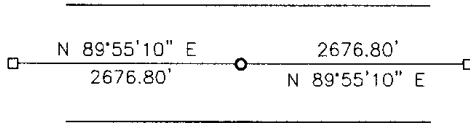
NORTH QUARTER Corner of Section 27, Township 113, Range 39, 5TH P.M.

STATE OF MINNESOTA, County of YELLOW MEDICINE

At the corner location shown on the sketch:

- On _____ found a _____
DATE
- left monument as found, lowered monument, removed monument (explain)
- On 02-22-2006 placed a 1" IRON PIPE W/ SEAL #43844
DATE

SKETCH OF REFERENCE TIES



Minnesota State Plane Coordinate
 System Yellow Medicine County Datum
 NAD83 (1996)
 N: 110894.222
 E: 595458.864

Statement of evidence relative to this corner location is on back of page.

I hereby certify that this document and the data contained herein was prepared by me or under my direct supervision.

Samuel Bush 2/24/06
SIGNATURE DATE

Registration No. 43844

- Land Surveyor, Professional Engineer
 County Surveyor, County Engineer

OFFICE OF THE COUNTY RECORDER

County of _____

I hereby certify that this document was filed in the Co. Recorders office at _____ M on the _____ day of _____ A.D. 20 _____

County Recorder _____

By _____, Deputy

DOCUMENT NO. _____

Statement of Evidence

In 1887, the Yellow Medicine County Surveyor established the corner midway and on line.

On June 15, 1911 John Norgaard set an iron bolt midway and on line between the section corners.

On February 22, 2006 Bueltel-Moseng Land Surveying dug midway and on line between the section corners and found nothing. We set a 1" iron pipe with seal #43844 midway and on line.

Doc# 240400 Fee: \$ 2 Pages

Office of County Recorder
Yellow Medicine County, Minnesota
I hereby certify that the within instrument
was filed on April 11, 2006 at 10:10 AM

Kay Zempel, Yellow Medicine County Recorder

BY Shirley Rohit Deputy

N/C
Bueltel-Moseng Land Surveying
P.O. Box 32
Marshall, MN 56258

CERTIFICATE OF LOCATION OF GOVERNMENT CORNER

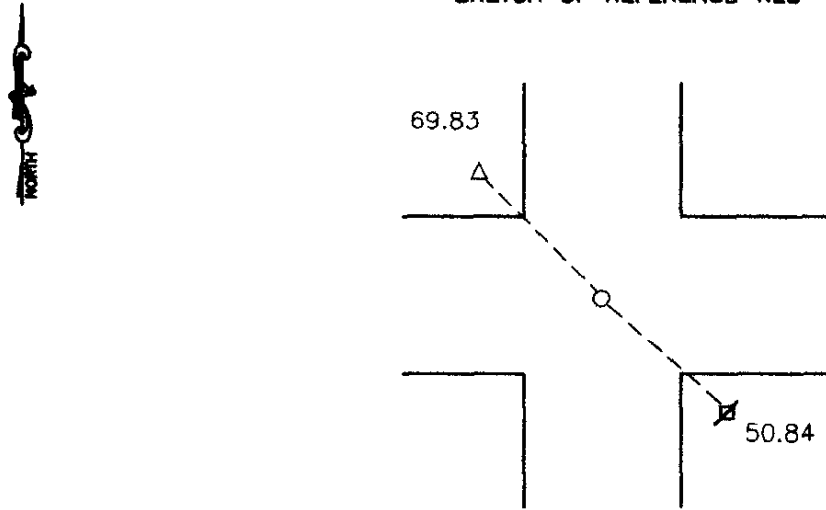
Northeast Corner of Section 27, Township 113, Range 39, 5th P.M.

STATE OF MINNESOTA, County of Yellow Medicine

At the corner location shown on the sketch:

- On 9-27-2000 found a 1x8 inch iron pipe filled with concrete with wooden stake
DATE
along the South side, we removed it and dug deeper but did not find a stone
 left monument as found, lowered monument, removed monument (explain)
- On 9-27-2000 placed a 10" 5/8" rerod in the center of the pipe
DATE

SKETCH OF REFERENCE TIES



Nail and seal in top of cut off telephone post 69.87' Northwest

Nail and seal in power pole 50.84' Southeast

Statement of evidence relative to this corner location is on back of page.

I hereby certify that this document and the data contained herein was prepared by me or under my direct supervision.

Lyle C Moseng 12-13-00
SIGNATURE DATE

Registration No. 11943

- Land Surveyor, Professional Engineer
- County Surveyor, County Engineer

OFFICE OF THE COUNTY RECORDER
County of

I hereby certify that this document was filed in the Co. Recorders office at 10:35 A.M on the 21st day of December A.D. 2000

County Recorder Kay Nerdahl

By Deie Rohlik, Deputy

DOCUMENT NO. 224804

N/C Lyle Moseng, 703 - Lawrence St.
Mshll. 56258

Statement of Evidence

On 9--27--2000, Moseng Land Surveying found a 1x8" iron pipe filled with concrete with a wooden stake along the South side it was removed so we could dig deeper but there was no stone. We set a 10" long 5/8" rerod in the center of it.

CERTIFICATE OF LOCATION OF GOVERNMENT CORNER

EAST QUARTER Corner of Section 28, Township 113, Range 39, 5TH P.M.

STATE OF MINNESOTA, County of YELLOW MEDICINE

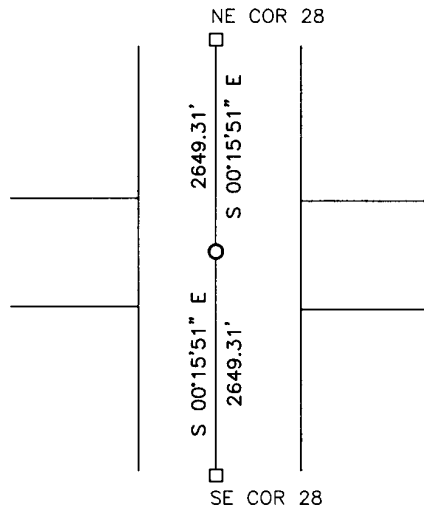
At the corner location shown on the sketch:

On _____ found a _____
DATE

left monument as found, lowered monument, removed monument (explain)

On 10/27/15 placed a survey spike with seal #43844
DATE

SKETCH OF REFERENCE TIES



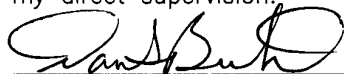
Minnesota State Plane Coordinate
System Yellow Medicine County Datum
NAD83 (1996)

NO TIES

N: 108241.179
E: 592794.286

Statement of evidence relative to this corner location is on back of page.

I hereby certify that this document and the data contained herein was prepared by me or under my direct supervision.


SIGNATURE

3/2/16
DATE

Registration No. 43844

Land Surveyor, Professional Engineer
 County Surveyor, County Engineer

OFFICE OF THE COUNTY RECORDER
County of _____

I hereby certify that this document was filed in the Co. Recorders office at _____ .M on the _____ day of _____ A.D. 20 _____

County Recorder _____

By _____, Deputy

DOCUMENT NO. _____

Statement of Evidence

In September, 1864, Chas. E. Davis and J.W. Webb Jr. did the original subdivision of the township.

On October 27, 2015, Bueltel-Moseng Land Surveying set a survey spike with seal #43844 midway and on line between section corners.

Doc# 263809 Fee: \$0.00 2 Pages

**Property & Public Services
Property Records Division**

Yellow Medicine County, Minnesota

**I hereby certify that the within instrument
was filed on March 28, 2016 at 11:10 AM**

Janel Timm, Yellow Medicine County Recorder

By Delra Blood Deputy

CERTIFICATE OF LOCATION OF GOVERNMENT CORNER

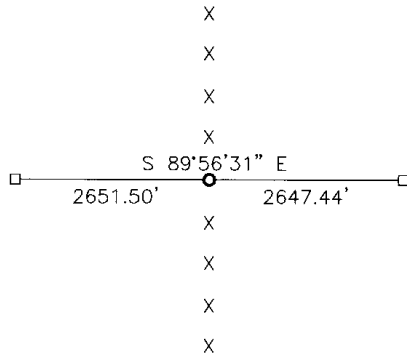
NORTH QUARTER Corner of Section 28, Township 113, Range 39, 5TH P.M.

STATE OF MINNESOTA, County of YELLOW MEDICINE

At the corner location shown on the sketch:

- On _____ found a _____
DATE
- left monument as found, lowered monument, removed monument (explain)
- On 11-10-2006 placed a 1" PIPE WITH SEAL #43844
DATE

SKETCH OF REFERENCE TIES



Minnesota State Plane Coordinate
 System Yellow Medicine County Datum
 NAD83 (1996)
 N: 110893.127
 E: 510134.667

Statement of evidence relative to this corner location is on back of page.

I hereby certify that this document and the data contained herein was prepared by me or under my direct supervision.

[Signature] 2/16/07
SIGNATURE DATE

Registration No. 43844
 Land Surveyor, Professional Engineer
 County Surveyor, County Engineer

OFFICE OF THE COUNTY RECORDER
County of _____

I hereby certify that this document was filed in the Co. Recorders office at _____ M on the _____ day of _____ A.D. 20 _____

County Recorder _____
 By _____, Deputy
 DOCUMENT NO. _____

Statement of Evidence

In 1864, Chas E Davis and J. W. Webber, Jr. did the original subdivision of the township.

On November 10, 2006, Bueltel-Moseng Land Surveying set a 1" pipe with seal #43844 on line between section corners and in line with fences to the north and south.

Doc# 244526 Fee: \$0.00 2 Pages

Office of County Recorder
Yellow Medicine County, Minnesota
I hereby certify that the within instrument
was filed on December 7, 2007 at 02:00 PM

Kay Zempel, Yellow Medicine County Recorder

BY Delina Blood Deputy

N/C Bueltel - Moseng Land Surveying
Lyle Moseng
P.O. Box 32
Muhl. 56258

CERTIFICATE OF LOCATION OF GOVERNMENT CORNER

Northeast Corner of Section 28, Township 113, Range 39, 5th P.M.

STATE OF MINNESOTA, County of Yellow Medicine

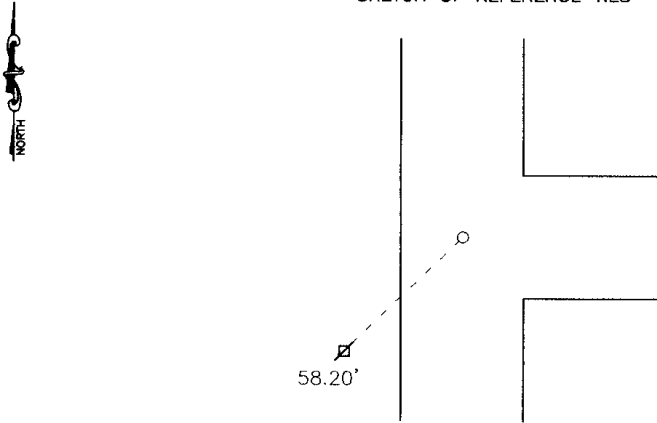
At the corner location shown on the sketch:

On _____ found a _____

left monument as found, lowered monument, removed monument (explain)

On 5-7-2003 placed a 1" pipe with seal #11943 in center of intersection.

SKETCH OF REFERENCE TIES



Nail and bottle cap in power pole Southwest 58.20'

Statement of evidence relative to this corner location is on back of page.

I hereby certify that this document and the data contained herein was prepared by me or under my direct supervision.

Lyle C. Mosing 2-06-04
SIGNATURE DATE

Registration No. 11943

Land Surveyor, Professional Engineer
 County Surveyor, County Engineer

OFFICE OF THE COUNTY RECORDER

County of _____

I hereby certify that this document was filed in the Co. Recorders office at _____ M on the _____ day of _____ A.D. 19 _____

County Recorder _____

By _____, Deputy

DOCUMENT NO. _____

Statement of Evidence

On May 7, 2003 Moseng Land Surveying found three large spikes in the center of the intersection. We set a 1" pipe with seal #11943 where the spikes were.

Doc# 236986 Fee: \$.00 2 Pages
Office of County Recorder, Yellow Medicine County, Minnesota
I hereby certify that the within instrument was
filed on January 4, 2005 at 01:45 PM

Kay Zempel, Yellow Medicine County Recorder
BY Dee Kohli Deputy

CERTIFICATE OF LOCATION OF GOVERNMENT CORNER

NORTHEAST Corner of Section 29, Township 113, Range 39, 5TH P.M.

STATE OF MINNESOTA, County of YELLOW MEDICINE

At the corner location shown on the sketch:

On 11-10-2006 found a STONE
DATE

left monument as found, lowered monument, removed monument (explain)

On 11-10-2006 placed a SET 1" PIPE W/SEAL #43844 OVER STONE
DATE

SKETCH OF REFERENCE TIES



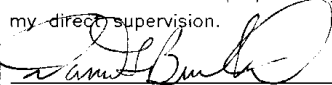
X X X X X



Minnesota State Plane Coordinate
System Yellow Medicine County Datum
NAD83 (1996)
N: 110895.813
E: 587483.168

Statement of evidence relative to this corner location is on back of page.

I hereby certify that this document and the data contained herein was prepared by me or under my direct supervision.


SIGNATURE 43844 2/16/07
DATE

Registration No. 43844
 Land Surveyor, Professional Engineer
 County Surveyor, County Engineer

OFFICE OF THE COUNTY RECORDER

County of _____
I hereby certify that this document was filed in the Co. Records office at _____ M on the _____ day of _____ A.D. 20 _____

County Recorder _____
By _____, Deputy
DOCUMENT NO. _____

Statement of Evidence

In 1864, Chas E. Davis and J. W. Webber, Jr. did the original subdivision of the township.

On November 10, 2006, Bueltel-Moseng Land Surveying dug with a backhoe and found a stone in the center of the road and in line with the fence to the west. Set 1" pipe with seal #43844 over stone.

Doc# 244527 Fee: \$0.00 2 Pages

Office of County Recorder
Yellow Medicine County, Minnesota
I hereby certify that the within instrument
was filed on December 7, 2007 at 02:05 PM

Kay Zempel, Yellow Medicine County Recorder

BY Delana Blood Deputy

N/C
Bueltel-Moseng Land Surveying
P.O. Box 32
Marshall, MN 56258

CERTIFICATE OF LOCATION OF GOVERNMENT CORNER

NORTHEAST Corner of Section 30, Township 113, Range 39, 5TH P.M.

STATE OF MINNESOTA, County of YELLOW MEDICINE

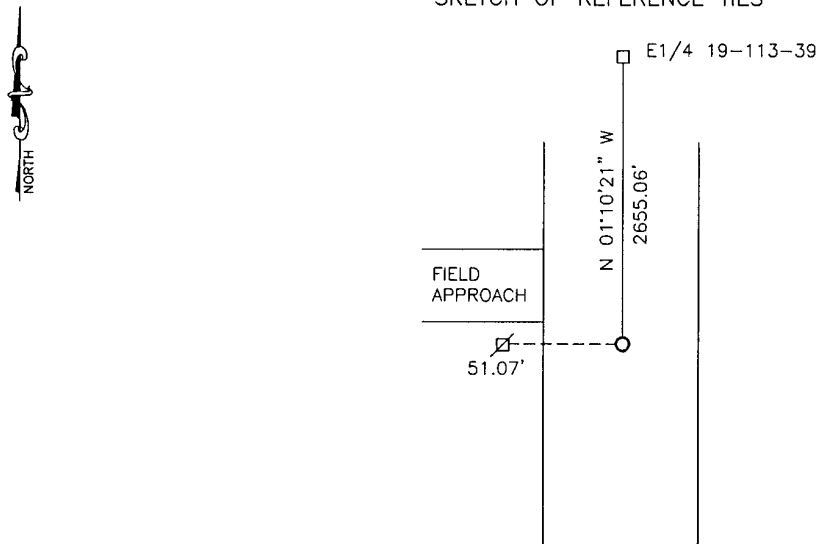
At the corner location shown on the sketch:

On 11-03-2017 found a 6"X6"X18" GRANITE STONE.
DATE

left monument as found, lowered monument, removed monument (explain)

On 11-03-2017 placed a 5/8" IRON WITH SEAL #50343 OVER STONE.
DATE

SKETCH OF REFERENCE TIES



Minnesota State Plane Coordinate
 System Yellow Medicine County Datum
 NAD83 (1996)

Nail and bottle cap in utility pole West 51.07'

N: 111067.677
 E: 582182.844

Statement of evidence relative to this corner location is on back of page.

I hereby certify that this document and the data contained herein was prepared by me or under my direct supervision.

[Signature] 3/14/2018
SIGNATURE DATE

Registration No. 50343

- Land Surveyor, Professional Engineer
 County Surveyor, County Engineer

Doc# 268097 Fee: \$0.00 2 Pages

Property & Public Services
 Property Records Division
 Yellow Medicine County, Minnesota
 I hereby certify that the within instrument was filed on March 28, 2018 at 10:30 AM

Janel Timm, Yellow Medicine County Recorder

By [Signature] Deputy

Statement of Evidence

In 1864, Chas E. Davis and J.W. Webb, Jr. did the original subdivision of the township.

In March, 1912, John Norgaard, County Surveyor, stated that he found the stone monument set by himself 12 or 13 years ago.

On November 3, 2017, Bueltel-Moseng Land Surveying dug with a backhoe and found a 6"x6"x18" granite stone monument. We set a 5/8" iron with seal #50343 over the stone.

CERTIFICATE OF LOCATION OF GOVERNMENT CORNER

NORTH QUARTER Corner of Section 30, Township 113, Range 39, 5TH P.M.

STATE OF MINNESOTA, County of YELLOW MEDICINE

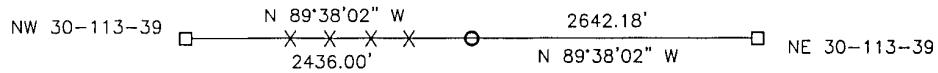
At the corner location shown on the sketch:

On _____ found a _____
DATE

left monument as found, lowered monument, removed monument (explain)

On 11-07-2017 placed a NOTHING SET - CORNER IS IN ROCK PILE.
DATE

SKETCH OF REFERENCE TIES



Minnesota State Plane Coordinate
System Yellow Medicine County Datum
NAD83 (1996)

N: 111084.558
E: 579540.714

Statement of evidence relative to this corner location is on back of page.

I hereby certify that this document and the data contained herein was prepared by me or under my direct supervision.

 3/16/2018
SIGNATURE DATE

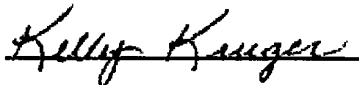
Registration No. 50343

Land Surveyor, Professional Engineer
 County Surveyor, County Engineer

Doc# 268096 Fee: \$0.00 2 Pages

Property & Public Services
Property Records Division
Yellow Medicine County, Minnesota
I hereby certify that the within instrument was filed on March 28, 2018 at 10:25 AM

Janel Timm, Yellow Medicine County Recorder

By  Deputy

Statement of Evidence

In 1864, Chas E. Davis and J.W. Webb, Jr. did the original subdivision of the township.

In March, 1912, John Norgaard, County Surveyor, used a corner fence post as the section corner.

On November 7, 2017, Bueltel-Moseng Land Surveying established the position of the corner on line between the section corners and using proportionate distances from the 1912 survey. Position fit the existing conditions. It is in the center of a rock pile. Nothing set.

CERTIFICATE OF LOCATION OF GOVERNMENT CORNER

NORTHWEST Corner of Section 30, Township 113 N, Range 39 W, 5th P.M.

STATE OF MINNESOTA, County of YELLOW MEDICINE

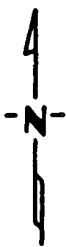
At the corner location shown on the sketch:

On 10-23-85 found a 6"x6"x24" GRANITE BLOCK DOWN 0.6'
DATE

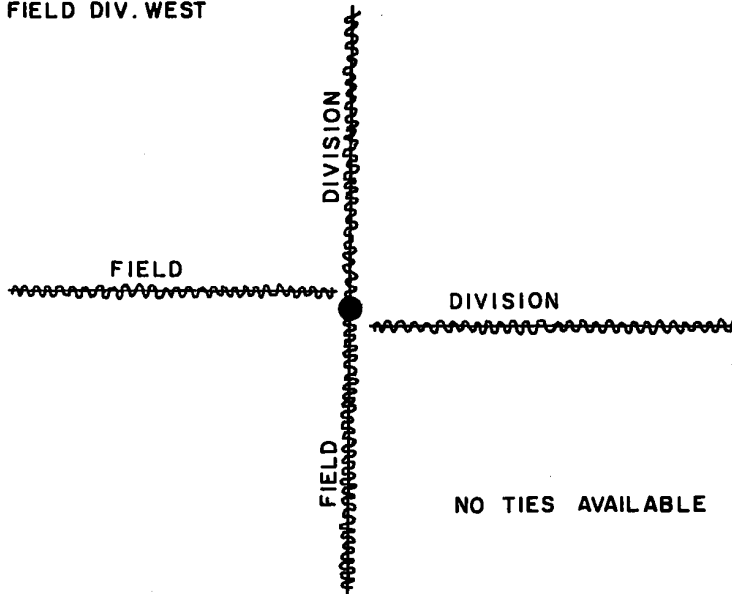
left monument as found, lowered monument, removed monument (explain)

On 10-23-85 placed a 1 1/4" x 1 1/4" x 20" PERFORATED STEEL TUBE WITH
DATE ALUMINUM CAP STAMPED "DNR SURVEY MARKER", OVER TOP

SKETCH OF REFERENCE TIES



NOTE:
MONUMENT IS
7' NORTH OF FIELD DIV. EAST
5' SOUTH OF FIELD DIV. WEST



Statement of evidence relative to this corner location is on back of page.

JAG 12-6-85
G - 1187

I hereby certify that this document and the data contained herein was prepared by me or under my direct supervision.

Luell R. Fournier 3-11-86
SIGNATURE DATE

Registration No. 17005

Land Surveyor, Professional Engineer
 County Surveyor, County Engineer

OFFICE OF THE COUNTY RECORDER

County of Yellow Medicine

I hereby certify that this document was filed in the Co. Recorders office at 9:25 A.M. on the 21 day of March A.D., 19 86

County Recorder Norman J. Opdahl

By Kay Nordahl, Deputy

DOCUMENT NO. 188026

GRANTOR
GRANTEE
INDEXED

Northwest Corner Section 30, Township 113 North, Range 39 West

This corner was originally established by the U. S. General Land Office survey in 1858. The government notes show corner marked with a wood post set in mound of earth with pits and trench dug around the mound.

In July 1985, the DNR Bureau of Engineering contacted the following for corner information:

Lyon County Offices of the Recorder and Highway Engineer
Yellow Medicine County Offices of the Recorder and Highway Engineer

The following information was obtained from the Yellow Medicine County Recorder's Office:

Surveyor's Record Book B, on Page 217, contains a collection of what was found at government corners by John Norgaard, County Surveyor, dated September 27, 1901. Norgaard states he found a stake and stone at fence corner set by Lyon County. A 6" by 6" by 2 foot jasper granite stone was set 2" above ground at this location.

Surveyor's Record Book, on Page 263, contains a survey by John Norgaard, County Surveyor in March 1912. Norgaard states he found the stone he set 12 or 13 years ago, and shows a distance of 2647 feet from this corner to the east quarter corner of Section 24.

In October 1985, the DNR Bureau of Engineering traversed to the area of the corner and found a 6" by 6" by 24" cut granite stone down 0.6 feet. Stone is:

on field divisions north and south
± 7 feet north of field division east
± 5 feet south of field division west

Accept the found stone as marking the location of the corner.

Traverse information is available from the DNR Bureau of Engineering.

200hab/missu4

CERTIFICATE OF LOCATION OF GOVERNMENT CORNER

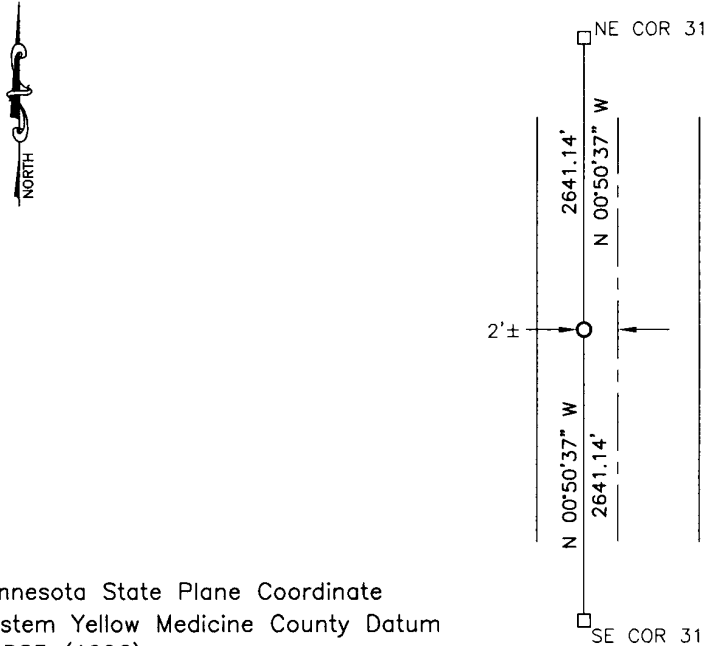
EAST QUARTER Corner of Section 31, Township 113, Range 39, 5TH P.M.

STATE OF MINNESOTA, County of YELLOW MEDICINE

At the corner location shown on the sketch:

- On _____ found a _____
- DATE
- left monument as found, lowered monument, removed monument (explain)
- On 4/21/16 placed a 5/8" iron with seal #50343
- DATE

SKETCH OF REFERENCE TIES




Minnesota State Plane Coordinate
System Yellow Medicine County Datum
NAD83 (1996)

N: 103112.296
E: 582359.179

Statement of evidence relative to this corner location is on back of page.

I hereby certify that this document and the data contained herein was prepared by me or under my direct supervision.


SIGNATURE _____ DATE 1/26/17

Registration No. 50343

- Land Surveyor, Professional Engineer
 County Surveyor, County Engineer

Doc# 265767 Fee: \$0.00 2 Pages

Property & Public Services
Property Records Division
Yellow Medicine County, Minnesota
I hereby certify that the within instrument
was filed on February 16, 2017 at 11:20 AM

Janel Timm, Yellow Medicine County Recorder

By  Deputy

Statement of Evidence

In September, 1864, Chas. E. David and J.W. Webb Jr. did the original subdivision of the township.

In October, 1913, John Norgaard, County Surveyor set a stone on line and equal distances between the section corners.

On April 21, 2016, Bueltel-Moseng Land Surveying set a 5/8" iron with seal #50343 midway and on line between the section corners. It is 2'± west of centerline of the road.

CERTIFICATE OF LOCATION OF GOVERNMENT CORNER

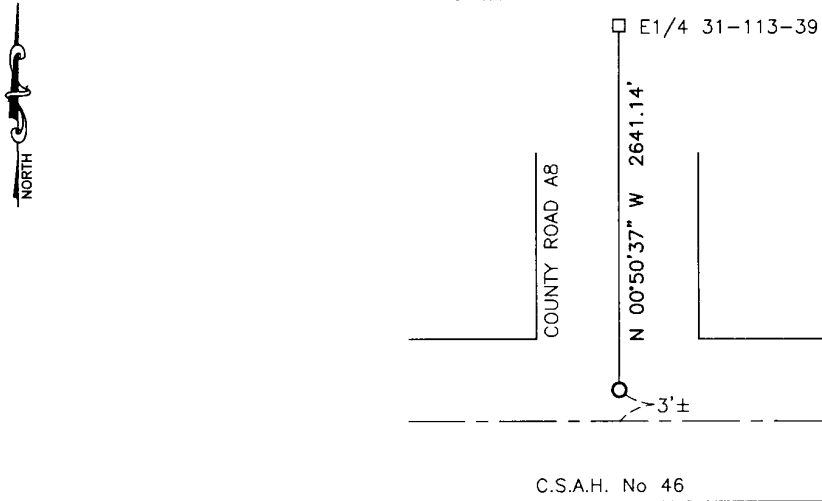
SOUTHEAST Corner of Section 31, Township 113, Range 39, 5TH P.M.

STATE OF MINNESOTA, County of YELLOW MEDICINE

At the corner location shown on the sketch:

- On _____ found a _____
DATE
- left monument as found, lowered monument, removed monument (explain)
- On 4/21/16 placed a survey spike with seal #50343
DATE

SKETCH OF REFERENCE TIES



Minnesota State Plane Coordinate
 System Yellow Medicine County Datum
 NAD83 (1996)
 N: 100471.447
 E: 582398.069

Statement of evidence relative to this corner location is on back of page.

I hereby certify that this document and the data contained herein was prepared by me or under my direct supervision.

[Signature] _____
 SIGNATURE DATE 1/26/17

Registration No. 50343

- Land Surveyor, Professional Engineer
- County Surveyor, County Engineer

Doc# 265766 Fee: \$0.00 2 Pages

Property & Public Services
 Property Records Division
 Yellow Medicine County, Minnesota
 I hereby certify that the within instrument
 was filed on February 16, 2017 at 11:15 AM

Janel Timm, Yellow Medicine County Recorder

By [Signature] Deputy

Statement of Evidence

In October, 1858, W.J. Neeley did the original survey of the south line of the township.

In October, 1913, John Norgaard, County Surveyor, found a jasper stone monument at the corner..

On October 2000, Roy Marihart found a monument at the corner.

On April 21, 2016, Bueltel-Moseng Land Surveying set a survey spike with seal #50343 by using Yellow Medicine County Highway Department coordinates. It fits the survey from 2000. It is in centerline of the road to the north and at the point of intersection of road to the east-west.

CERTIFICATE OF LOCATION OF GOVERNMENT CORNER

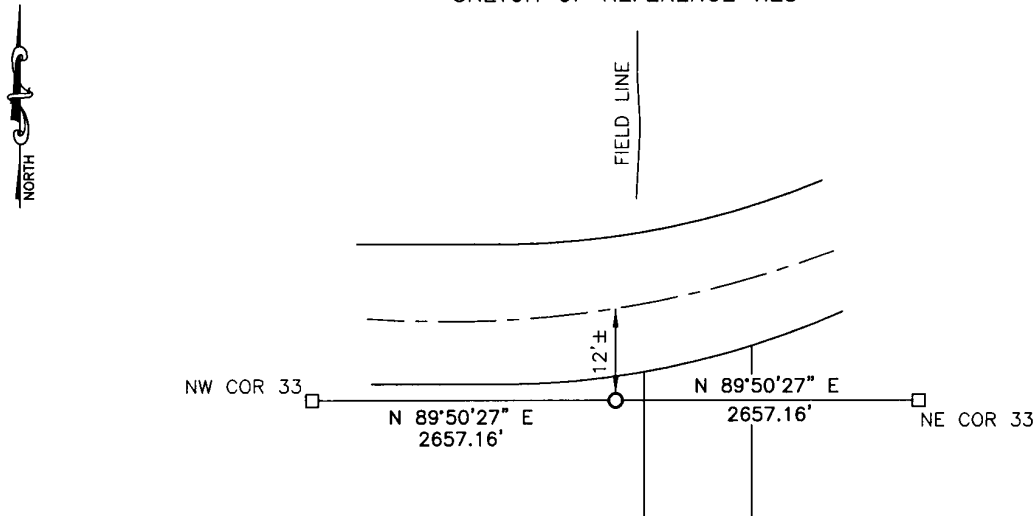
NORTH QUARTER Corner of Section 33, Township 113, Range 39, 5TH P.M.

STATE OF MINNESOTA, County of YELLOW MEDICINE

At the corner location shown on the sketch:

- On _____ found a _____
DATE
- left monument as found, lowered monument, removed monument (explain)
- On 10/27/15 placed a 5/8" iron with seal #43844
DATE

SKETCH OF REFERENCE TIES



Minnesota State Plane Coordinate
 System Yellow Medicine County Datum
 NAD83 (1996)

NO TIES

N: 105584.517
 E: 590149.354

Statement of evidence relative to this corner location is on back of page.

I hereby certify that this document and the data contained herein was prepared by me or under my direct supervision.

[Signature] 3/2/16
SIGNATURE DATE

Registration No. 43844

- Land Surveyor, Professional Engineer
 County Surveyor, County Engineer

OFFICE OF THE COUNTY RECORDER

County of _____

I hereby certify that this document was filed in the Co. Recorders office at _____ .M on the _____ day of _____ A.D. 20 _____

County Recorder _____

By _____, Deputy

DOCUMENT NO. _____

Statement of Evidence

In September, 1864, Chas. E. Davis and J.W. Webb Jr. did the original subdivision of the township.

In June, 1912, John Norgaard, County Surveyor, recorded a post in an old pit at the corner.

On October 27, 2015, Bueltel-Moseng Land Surveying set a 5/8" iron with seal #43844 midway and on line between section corners. It is in the ditch on the south side of road and west side of the field approach. We retraced Norgaard's 1912 survey in Section 28-113-39 and we are 0.05'± of his measurements to said corner.

Doc# 263810 Fee: \$0.00 2 Pages

Property & Public Services

Property Records Division

Yellow Medicine County, Minnesota

I hereby certify that the within instrument

was filed on March 28, 2016 at 11:15 AM

Janel Timm, Yellow Medicine County Recorder

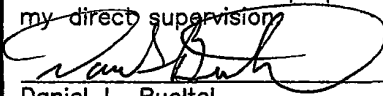
By Debra Blood Deputy

Corners to be Indexed

N1/4 36-114-39
S1/4 36-114-39 (N1/4 1-113-39)
W1/4 36-114-39 (E1/4 35-114-39)

Doc# 279605 Fee: \$0.00 2 Pages
Property & Public Services
Property Records Division
Yellow Medicine County, Minnesota
I hereby certify that the within instrument
was filed on February 13, 2023 at 12:20 PM

I hereby certify that this document and the data
contained herein was prepared by me or under
my direct supervision



2/9/2023
Date

Daniel L. Bueltel
License No. 43844

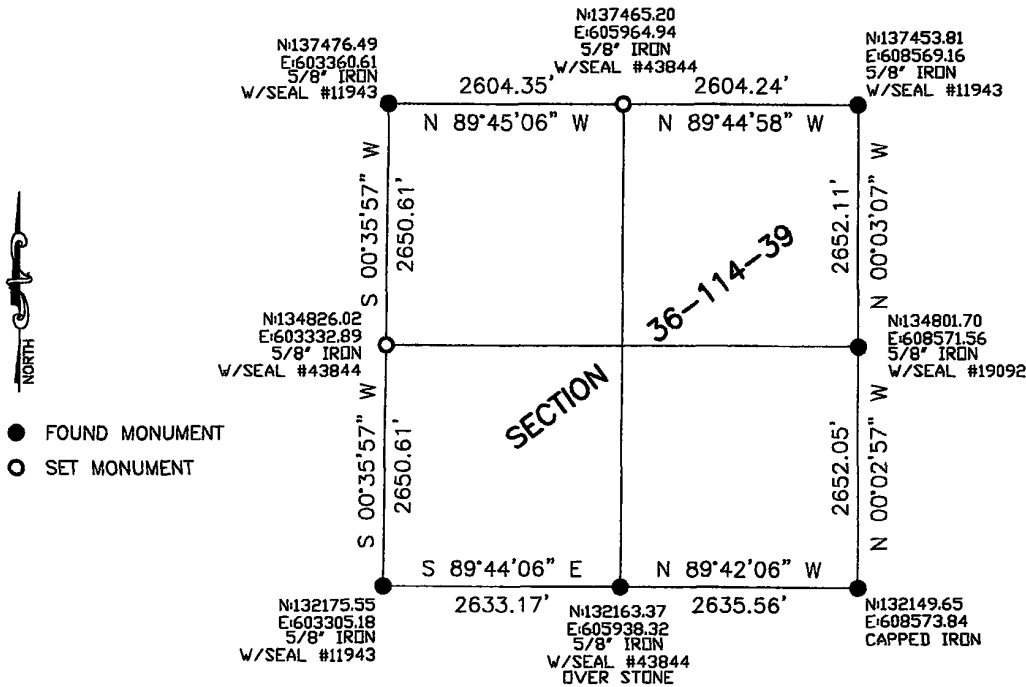
Janel Timm, Yellow Medicine County Recorder

By Marit Nordang Deputy

CERTIFICATE OF LOCATION OF GOVERNMENT CORNER

Land survey monuments situated in Section 36, Township 114, Range 39, 5TH P.M.

STATE OF MINNESOTA, County of YELLOW MEDICINE



Statement of Evidence

N1/4 36-114-39

In September, 1864, Chas E. Davis and J.W. Webb Jr. did the original subdivision of the township.

In June 1891, Jonah Peterman, County Surveyor, found the corner.

A survey from 1920 shows a stone at the corner midway between section corners with a total mile being 5206 feet and the half mile being 2603 feet.

On May 20, 2022 Bueltel-Moseng Land Surveying found a $\frac{1}{2}$ " iron with seal #19092, we recorded the position of the iron, removed and dug with a back hoe, nothing was found. Set a $\frac{5}{8}$ " iron with seal #43844 at the position of the found $\frac{1}{2}$ " iron. Distances are within 1.00±

W1/4 36-114-39 (E1/4 35-114-39)

In September, 1864, Chas E. Davis and J.W. Webb Jr. did the original subdivision of the township.

On May 20, 2022, Bueltel-Moseng Land Surveying set a $\frac{5}{8}$ " iron with seal #43844 midway and on line between section corners.

S1/4 36-114-36 (N1/4 1-113-39)

In September, 1864, Chas E Davis and J.W. Webb Jr. did the original subdivision of the township.

In June 1891, Jonah Peterman, County Surveyor, shows a field stone at the corner.

On May 20, 2022 Bueltel-Moseng Land Surveying dug with back hoe and found an 18" field stone 4' below the roads surface. Set a $\frac{5}{8}$ " iron with seal #43844 on the west side of the stone and set a $\frac{5}{8}$ " iron with seal #43844 over the stone at the roads surface.

Corners to be Indexed

S1/4 36-113-39

Doc# 270364 Fee: \$0.00 1 Pages

Property & Public Services
Property Records Division
Yellow Medicine County, Minnesota
I hereby certify that the within instrument
was filed on March 11, 2019 at 9:40 AM

I hereby certify that this document and the data
contained herein was prepared by me or under
my direct supervision.

Janel Timm, Yellow Medicine County Recorder

By Kelly Kauger Deputy

Jerry G. Johnson Date 3-4-2019
License No. 50343

CERTIFICATE OF LOCATION OF GOVERNMENT CORNER

Land survey monuments situated in Section 36, Township 113, Range 39, 5TH P.M.
STATE OF MINNESOTA, County of YELLOW MEDICINE

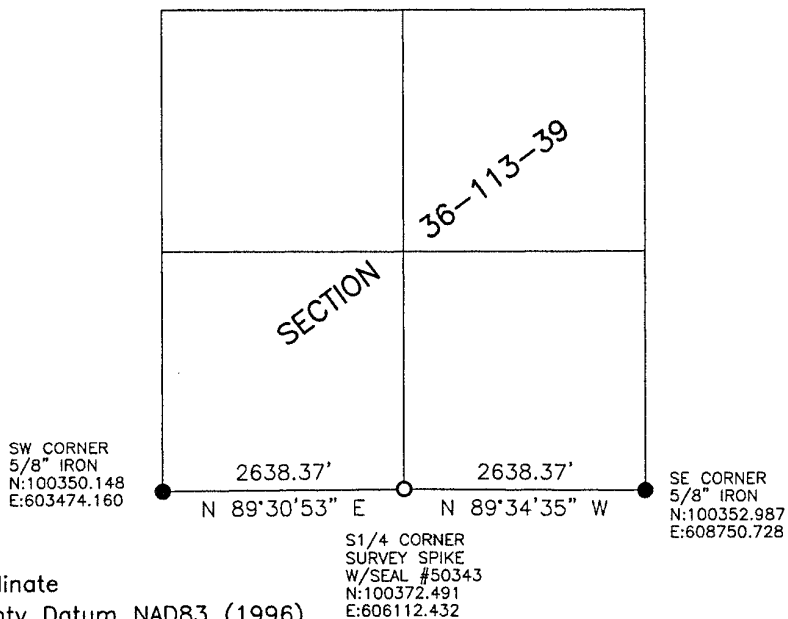
STATEMENT OF EVIDENCE:

In 1858, W.J. Neely did the original survey of the south line of the township.

On December 14, 2018, Bueltel-Moseng Land Surveying set a survey spike with seal #50343
in the center of the road and equal distances between the southwest and southeast corners of
Section 36-113-39. It is in the center of the east-west road and 28.6' east of the center
of the intersection.



- FOUND MONUMENT
- SET MONUMENT



Minnesota State Plane Coordinate
System Yellow Medicine County Datum NAD83 (1996)

CERTIFICATE OF LOCATION OF GOVERNMENT CORNER

Southeast Corner of Section 36, Township 113, Range 39, 5th P.M.

STATE OF MINNESOTA, County of Yellow Medicine

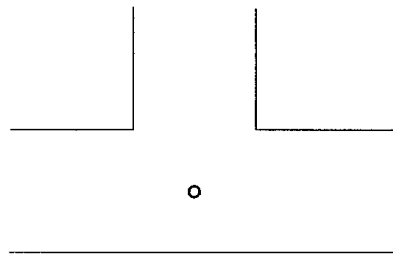
At the corner location shown on the sketch:

On _____ found a _____
DATE

left monument as found, lowered monument, removed monument (explain)

On Oct. 24, 2002 placed a 5/8" iron w/seal #11943
DATE

SKETCH OF REFERENCE TIES



Nothing to tie to

Statement of evidence relative to this corner location is on back of page.

I hereby certify that this document and the data contained herein was prepared by me or under my direct supervision.

Lyle C Mooring 2-25-04
SIGNATURE DATE

Registration No. 11943

- Land Surveyor, Professional Engineer
 County Surveyor, County Engineer

OFFICE OF THE COUNTY RECORDER

County of _____

I hereby certify that this document was filed in the Co. Recorders office at _____ M on the _____ day of _____ A.D. 20 _____

County Recorder _____

By _____, Deputy

DOCUMENT NO. _____

Statement of Evidence

In 1965 the Yellow Medicine County Highway Department found an unrecorded iron monument prior to regrading the road.

On Oct 24, 2002, Moseng Land Surveying, found iron monument. Placed a 5/8" iron w/seal #11943 over found iron.

Doc# 236987 Fee: \$.00 2 Pages
Office of County Recorder, Yellow Medicine County, Minnesota
I hereby certify that the within instrument was
filed on January 4, 2005 at 01:50 PM

Kay Zempel, Yellow Medicine County Recorder
BY Walt R. Erik Deputy

CERTIFICATE OF LOCATION OF GOVERNMENT CORNER

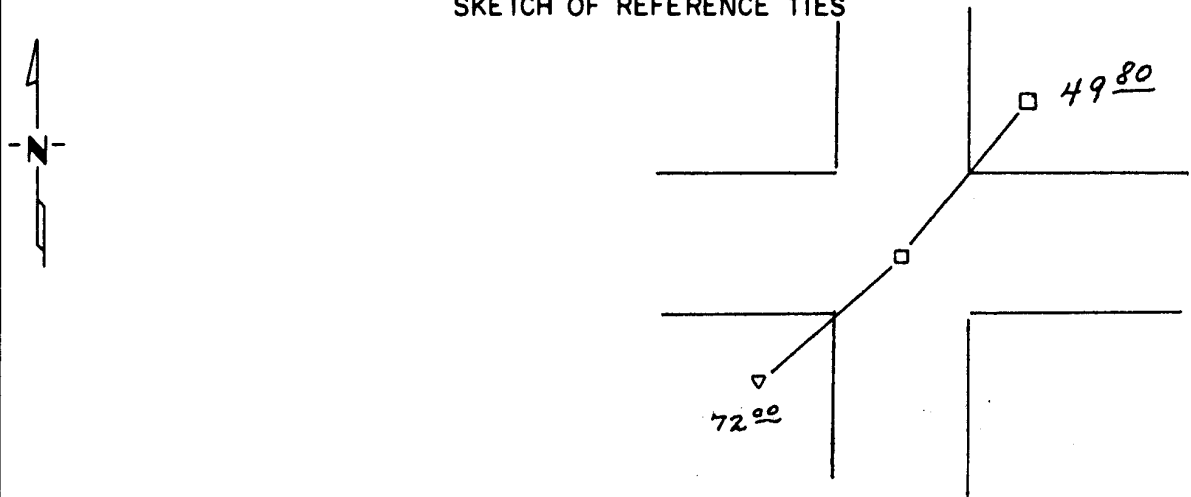
Northeast _____ Corner of Section 36, Township 113 N., Range 39 W., 5th P.M.

STATE OF MINNESOTA, County of Yellow Medicine

At the corner location shown on the sketch:

- On April 3, 1984 found a 6"x 6" Square cut Granite Stone 20 inches below
DATE
the road surface.
 - left monument as found, lowered monument, removed monument (explain)
- On April 3, 1984 placed a 5/8 inch rerod with seal on top of it
DATE

SKETCH OF REFERENCE TIES



Nail and seal in telephone cable marker Southwest 72.00 feet
 Nail and bottle cap in power pole Northeast 49.80 feet

Statement of evidence relative to this corner location is on back of page.

I hereby certify that this document and the data contained herein was prepared by me or under my direct supervision.

Gayle E. Mooney July 6, 1989
SIGNATURE DATE
 Registration No. 11943

- Land Surveyor, Professional Engineer
- County Surveyor, County Engineer

OFFICE OF THE COUNTY RECORDER
 County of Yellow Medicine

I hereby certify that this document was filed in the Co. Recorders office at 2:35 P.M. on the 1 day of May A.D., 1990

County Recorder *Norman J. Opdahl*

By _____, Deputy

DOCUMENT NO. 197338

Statement of Evidence:

Original set pit and mound

John Norgaard set a square cut Granite monument for the section corner, in the early 1900's.

The county found and used a square cut Granite Stone

On April 3, 1989 I found said square cut Granite Stone and set a 5/8 inch rerod on top of it.