

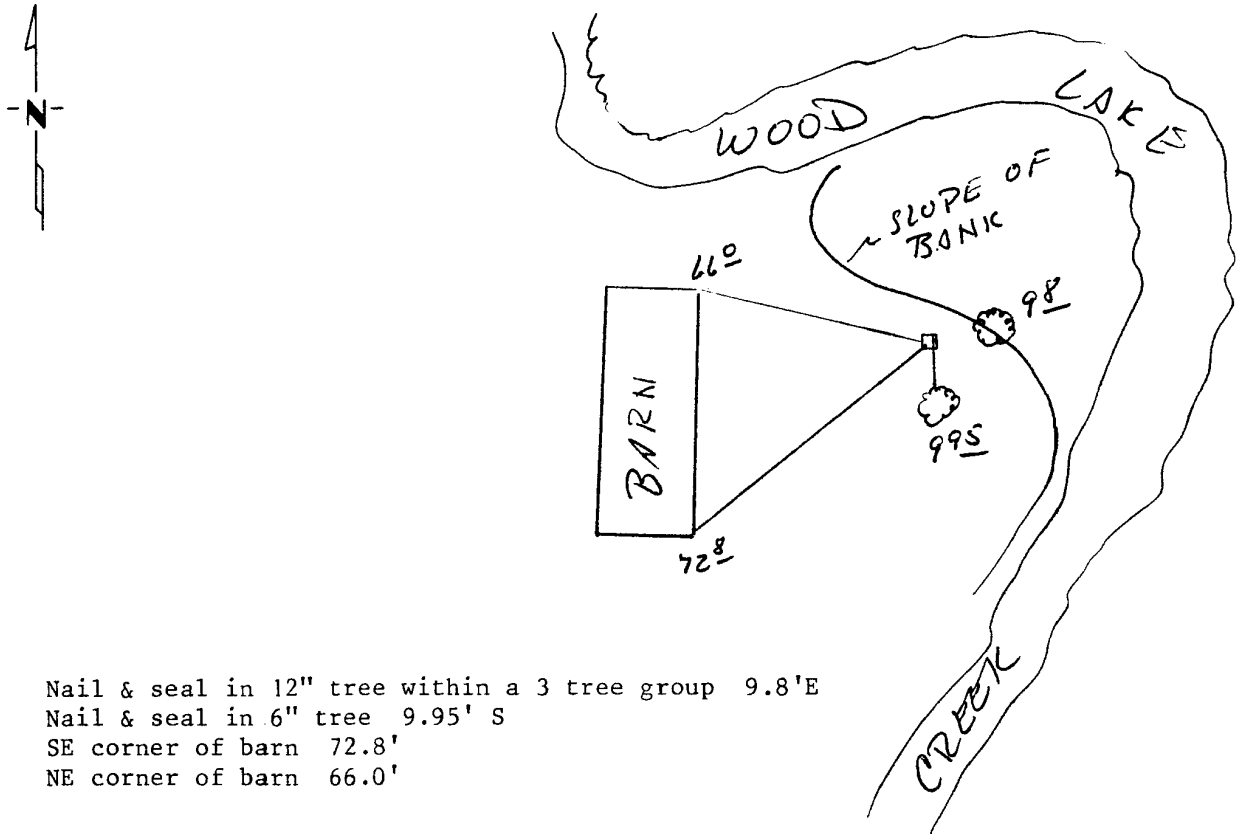
CERTIFICATE OF LOCATION OF GOVERNMENT CORNER

Meander Cor. near NE _____ Corner of Section 3, Township 114, Range 38, _____ P.M.
STATE OF MINNESOTA, County of Yellow Medicine

At the corner location shown on the sketch:

- On Oct. 6, 1994 found a 2" square iron shaft (SEE BACK)
DATE
- left monument as found, lowered monument, removed monument (explain)
- On _____ placed a _____
DATE

SKETCH OF REFERENCE TIES



Nail & seal in 12" tree within a 3 tree group 9.8'E
 Nail & seal in 6" tree 9.95' S
 SE corner of barn 72.8'
 NE corner of barn 66.0'

Statement of evidence relative to this corner location is on back of page.

I hereby certify that this document and the data contained herein was prepared by me or under my direct supervision.

Leif C. Mosay SIGNATURE Feb 7-1995 DATE

- Registration No. 011943
- Land Surveyor, Professional Engineer
 - County Surveyor, County Engineer

OFFICE OF THE COUNTY RECORDER
County of Yellow Medicine

I hereby certify that this document was filed in the Co. Recorders office at 3:35 P.M. on the 31 day of May A.D., 19 95

County Recorder Normand Oestle
By _____, Deputy

DOCUMENT NO. 209238

Statement of Evidence:

On October 6, 1994, we found a 2" square iron shaft with a 4"x4" flat top, marked "M.C." There is a 6"x4" granite stone along the south side. The corner was set by John Nordguard in 1896.

In 1911, John Nordguard set a 6"x6"x24" stone monument under the iron shaft.

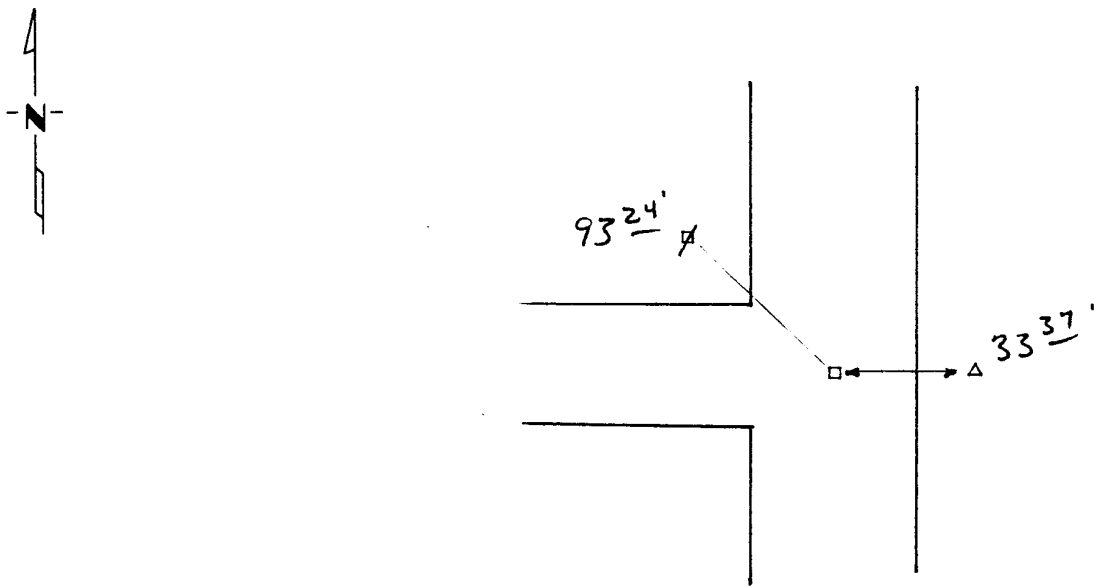
CERTIFICATE OF LOCATION OF GOVERNMENT CORNER

East Quarter _____ Corner of Section 3, Township 114, Range 38, _____ P.M.
 STATE OF MINNESOTA, County of Yellow Medicine

At the corner location shown on the sketch:

- On Oct. 26, 1994 found a large field stone 12" down - placed a 5/8" iron stake
DATE w/seal #11943 next to stone
 left monument as found, lowered monument, removed monument (explain)
- On Oct. 26, 1994 placed a 1" iron pipe w/seal #11943 over stone at the surface
DATE

SKETCH OF REFERENCE TIES



Nail & seal in power pole NW 93.24'
 Nail & seal in telephone ped. post E 33.37

Statement of evidence relative to this corner location is on back of page.

I hereby certify that this document and the data contained herein was prepared by me or under my direct supervision.

Lyle C. Mooney Feb 7-1995
SIGNATURE DATE

- Registration No. 11943
- Land Surveyor, Professional Engineer
 - County Surveyor, County Engineer

OFFICE OF THE COUNTY RECORDER
 County of Yellow Medicine

I hereby certify that this document was filed in the Co. Recorders office at 3:30 P.M. on the 31 day of May A.D., 19 95

County Recorder Dorinda Oxel
 By _____, Deputy

DOCUMENT NO. 209237

Statement of Evidence:

N/c

Prepared by: Zieske Land Surveying, Inc. Address: Box 94, Windom, MN 56101 Phone: (507) 831-0100

UNITED STATES PUBLIC LAND SURVEY CORNER CERTIFICATE FOR

Land survey monuments situated in Section 4, Township 114 North, Range 38 West, of the Fifth Principal Meridian, Yellow Medicine County, Minnesota.

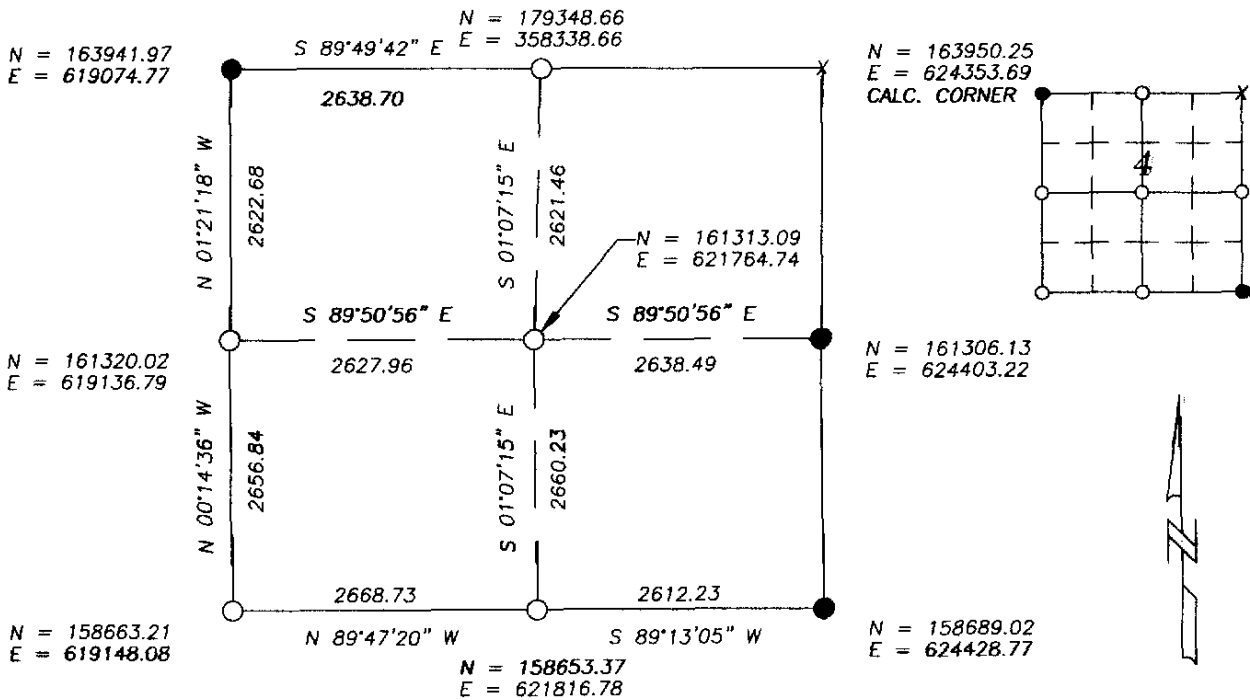
Previously recorded in N/A in County Recorder's Office.

(Show reason for preparing this certificate, the evidence and detailed procedure used in establishing the corner position & monumentation found or placed.)

MONUMENT DESCRIPTION AND REMARKS: On June 3, 2008 we dug with backhoe for North 1/4 Corner, West 1/4 Corner & East 1/4 Corner. Original Public Land survey run in 1864 indicates a post set in a mound with pits to mark the corners. In 1883 County Surveyor Jonah Peterman from Pg. 17 in Survey Record book said he found all of Section 4 1/4 posts. We found pile of 12" rocks with wood on South side for N 1/4 Corner at \odot Twp. Road & 4' East at fence to South. Accepted stone as corner & placed a survey marker spike with disk 23008. We found a 12" X 15" stone 2' below surface at approximate \odot old roadbed in line with fence east & accepted stone as corner & placed a 1" Iron pipe with survey cap 23008 over top center of stone. We found no evidence at West 1/4 Corner and set 1" Iron pipe with survey cap 23008 at \odot Twp. Road in line with fence west and occupation east. This is practical location and fits (over)

YELLOW MEDICINE COUNTY COORDINATES NAD 83 (1996)

PLAN-VIEW



I hereby certify that this land surveying document was prepared and related survey work was performed by me or under my direct supervision and that I am a duly licensed Land Surveyor under the laws of the State of Minnesota.

Perry L. Zieske 9-8-08
 Signature Date
 Perry Zieske
 License number 23008

Sheet 1 of 1

Corners to be Indexed

Corners	Section	Township	Range
N 1/4	4	114	38
E 1/4	4	114	38
W 1/4	4	114	38
SW	4	114	38
S 1/4	4	114	38
CTR.	4	114	38

old survey book distance within 1 foot. The SW & S 1/4 Corner are in county road 18 bituminous surface
and we did not dig into bituminous road. We reset SW Corner and South 1/4 Corner as per Yellow Medicine
County Highway Plans, State Aid Project No. 87-618-18. We set a survey marker with disk 23008 at
corners in for accepted corners. The locations are on County Road Q and fit occupation lines & Twp. Road
Centerline area. We also set a 1" Iron Pipe with survey cap 23008 at center of Section by intersecting
opposite 1/4 corners as per Public Land Surveying instructions.

Doc# 246438 Fee: \$0.00 2 Pages

**Office of County Recorder
Yellow Medicine County, Minnesota
I hereby certify that the within instrument
was filed on September 17, 2008 at 10:10 AM**

Kay Zempel, Yellow Medicine County Recorder

By Heidi Burkling Deputy

CERTIFICATE OF LOCATION OF GOVERNMENT CORNER

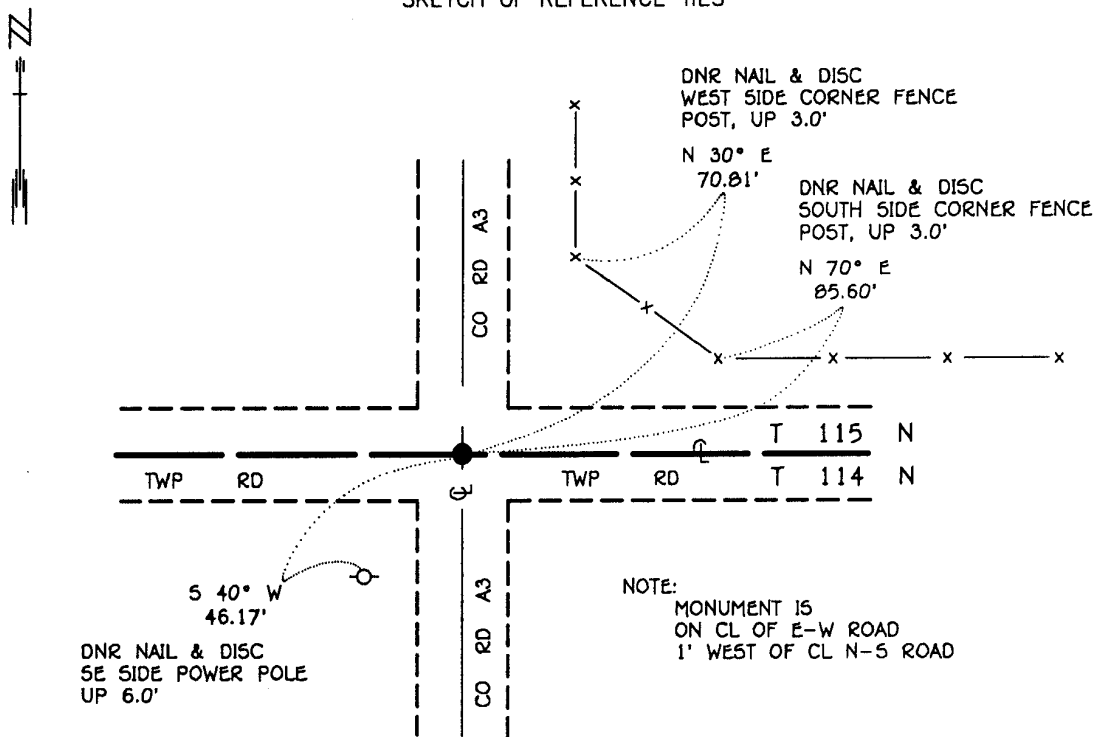
NORTHEAST Corner of Section 5, Township 114 N, Range 30 W, 5th P.M.

STATE OF MINNESOTA, County of YELLOW MEDICINE

At the corner location shown on the sketch:

- On 6-21-95 found a 6" x 6" CUT STONE, DOWN 4.3'
DATE
- left monument as found, lowered monument, removed monument (explain)
- On 6-21-95 Placed a 3/4" x 24" REBAR WITH ALUMINUM CAP STAMPED
DATE "DNR SURVEY MARKER", OVER STONE, DOWN 0.7'

SKETCH OF REFERENCE TIES



NOTE:
MONUMENT IS
ON CL OF E-W ROAD
1' WEST OF CL N-S ROAD

BEARINGS OBSERVED WITH COMPASS

Statement of evidence relative to this corner location is on back of page.

JBM OCT '95
SPK.00277.00.00.01

I hereby certify that this document and the data contained herein was prepared by me or under my direct supervision.

Duane W. Sheppard 11/6/95
SIGNATURE DATE

License Number 17003

- Land Surveyor, Professional Engineer
- County Surveyor, County Engineer

OFFICE OF THE COUNTY RECORDER
County of Yellow Medicine

I hereby certify that this document was filed in the Co. recorders office at 9:55 A.M. on the 7 day of November A.D., 1995

County Recorder Sumner Erickson
By _____, Deputy
DOCUMENT NO. 210271

Northeast Corner Section 5, Township 114 North, Range 38 West

The DNR Bureau of Engineering contacted the following for survey information:

Minnesota Secretary of State's Office
Mn/DOT Offices in St. Paul and Willmar
Yellow Medicine County Recorder's Office
Yellow Medicine County Highway Engineer's Office
Montevideo City Engineer's Office
Bonnema Surveys of Willmar
Moseng and Zieske Surveying, Inc. of Marshall
Michael Nyberg, RLS #13145, of Carlos
West Central Land Services, Inc. of Willmar
K.B. MacKichan and Associates, Inc. of Redwood Falls

- 1857 U.S. General Land Office notes obtained from the Secretary of State's Office show the corner marked with a wood post and a charred stake driven in a mound of earth with trench per instructions.
- 1889 Surveyor's Record Book, page 19, obtained from the County Recorder's Office, contains a survey by Jonah Peterman, County Surveyor. Survey shows corner but does not indicate what was found or set.
- 1891 Surveyor's Record Book, page 47, obtained from the County Recorder's Office, contains a survey by Jonah Peterman, County Surveyor. Survey shows corner but does not indicate what was found or set. A distance to corner is not shown but a marked stake, stone and pits are shown on the south line of the southeast quarter of Section 32. The stake, stone and pits are shown:
21.30 chains (1405.80') from the north quarter corner of Section 5
- 1901 Surveyor's Record Book B, pages 70 and 134, obtained from the County Recorder's Office, contains a collection of what was found or set at government corners by John Norgaard, County Surveyor, in a township re-monumentation survey. Norgaard states "found stone at the intersection of roads set by adjoining landowners in the government mound when the corner was plain". A 6" by 6" by 24" jasper granite stone was set at this location, top of monument level with ground.
- 1935 Surveyor's Record Book, page 47, obtained from the County Recorder's Office, contains a survey by John Norgaard. Survey shows corner but does not indicate what was found or set. The corner is shown:
2646 feet from the north quarter corner of Section 5
1240 feet easterly of a point on the south line of Section 32
- No Date Section Corner Tie Book obtained from the County Highway Engineer's Office does not indicate what was found or set at corner but the following ties are shown to it:
telephone pole, southeast, 43.0 feet
corner fence post, northeast, 35.8 feet
- 1991 July, a page in a field notebook obtained from Mn/DOT in Willmar states that a PK nail was set for corner over a strong metal attraction. The PK nail is shown:
at the intersection of roads north, south, east and west
5478.12 feet from the northeast corner of Section 32
- 1994 November 8, DNR Bureau of Engineering found a 6" by 6" cut stone down 4.3 feet at corner. Searched for but found no evidence of the record ties. The stone was found to be:
1 foot west of the center line of a north-south road
on the center line of an east-west road
5478.40 feet from the northeast corner of Section 32
2647.37 feet from the north quarter corner of Section 5

Analysis of the above information led the DNR Bureau of Engineering to conclude that the found stone which was set in 1901 in place of a stone that was set in the government mound marks the original position of the corner.

CERTIFICATE OF LOCATION OF GOVERNMENT CORNER

NORTH QUARTER Corner of Section 5, Township 114 N, Range 38 W, 5th P.M.

STATE OF MINNESOTA, County of YELLOW MEDICINE

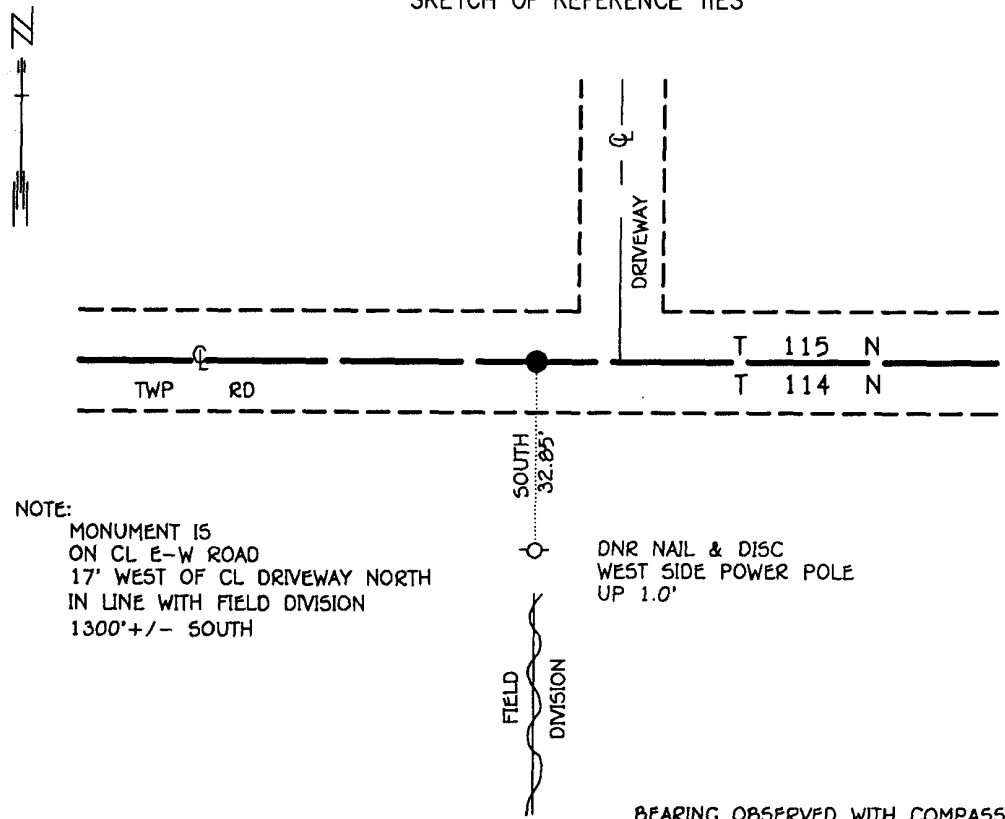
At the corner location shown on the sketch:

On _____ found a _____
DATE

left monument as found, lowered monument, removed monument (explain)

On 6-14-95 Placed a 3/4" x 24" REBAR WITH ALUMINUM CAP STAMPED
DATE "DNR SURVEY MARKER", DOWN 0.3'

SKETCH OF REFERENCE TIES



NOTE:
MONUMENT IS
ON CL E-W ROAD
17' WEST OF CL DRIVEWAY NORTH
IN LINE WITH FIELD DIVISION
1300'+/- SOUTH

DNR NAIL & DISC
WEST SIDE POWER POLE
UP 1.0'

BEARING OBSERVED WITH COMPASS

Statement of evidence relative to this corner location is on back of page.

JBM OCT '95
SPK00277.00.00.01

I hereby certify that this document and the data contained herein was prepared by me or under my direct supervision.

Dave W. Shopp 11/6/95
SIGNATURE DATE

License Number 17003

- Land Surveyor, Professional Engineer
- County Surveyor, County Engineer

OFFICE OF THE COUNTY RECORDER
County of Yellow Medicine

I hereby certify that this document was filed in the Co. recorders office at 9:50 A.M. on the 7 day of November A.D., 1995

County Recorder *Dorinda Coe*
By _____, Deputy
DOCUMENT NO. 210270

The DNR Bureau of Engineering contacted the following for survey information:

Minnesota Secretary of State's Office
Mn/DOT Offices in St. Paul and Willmar
Yellow Medicine County Recorder's Office
Yellow Medicine County Highway Engineer's Office
Montevideo City Engineer's Office
Bonnema Surveys of Willmar
Moseng and Zieske Surveying, Inc. of Marshall
Michael Nyberg, RLS #13145, of Carlos
West Central Land Services, Inc. of Willmar
K.B. MacKichan and Associates, Inc. of Redwood Falls

- 1857 U.S. General Land Office notes obtained from the Secretary of State's Office show the corner marked with a wood post and a charred stake driven in a mound of earth with trench per instructions.
- 1889 Surveyor's Record Book, page 19, obtained from the County Recorder's Office, contains a survey by Jonah Peterman, County Surveyor. Survey states that corner was found but a description of a monument is not given.
- 1891 Surveyor's Record Book, page 47, obtained from the County Recorder's Office, contains a survey by Jonah Peterman, County Surveyor. Survey states that a post was found at corner. The corner is shown:
21.30 chains (1405.80') westerly of a marked stake, stone and pits set on the south line of Section 32
Survey also states that a stone which was set by G.E. Olds, County Surveyor, for the center of Section 32 was found. A distance from the stone to the north quarter corner of Section 5 is not given.
- 1935 Surveyor's Record Book, page 47, obtained from the County Recorder's Office, contains a survey by John Norgaard. Survey shows corner but does not indicate what was found or set. The corner is shown:
2646 feet from the northeast corner of Section 5
2642 feet from the northeast corner of Section 6
1406 feet westerly of a point on the south line of Section 32
- 1994 September 27, DNR Bureau of Engineering located an old rotted wooden corner fence post with maintained fences north and south and a downed fence west in area of the center of Section 32. Searched around the fence post for the record stone but only found numerous boulders and field stones.
- 1994 November 8, DNR Bureau of Engineering computed a position for corner on line between adjoining section corners and proportional measurements per 1935 survey. The computed position was found to be:
2647.37 feet from the northeast corner of Section 5
2643.37 feet from the northeast corner of Section 6
on the center line of an east-west road

Dug a 4 foot north-south by 8 foot east-west by 5 foot deep hole, with a backhoe, centered on the computed position for corner. Scanned the area of excavation with an electronic metal detector but no metal attraction was obtained. No evidence of a monument was found in excavation.

The corner fence post found in the area of the center of Section 32 was found to be:
2.28 feet west of a straight line between quarter corners

1994 December 5, DNR Bureau of Engineering dug a 2 foot diameter by 2.5 foot deep hole 1406 feet easterly of the computed position for corner in search of the stone per 1891 survey. Scanned the area of excavation with an electronic metal detector but no metal attraction was obtained. No evidence of a monument was found in excavation.

1995 June 14, DNR Bureau of Engineering set a DNR Survey Marker at the computed position for corner as shown on the sketch of reference ties.

Analysis of the above information led the DNR Bureau of Engineering to conclude that the computed position for corner on line between adjoining section corners and proportional measurements per 1935 survey marks the location of the corner.

The DNR Bureau of Engineering contacted the following for survey information:

Minnesota Secretary of State's Office
Mn/DOT Offices in St. Paul and Willmar
Yellow Medicine County Recorder's Office
Yellow Medicine County Highway Engineer's Office
Montevideo City Engineer's Office
Bonnema Surveys of Willmar
Moseng and Zieske Surveying, Inc. of Marshall
Michael Nyberg, RLS #13145, of Carlos
West Central Land Services, Inc. of Willmar
K.B. MacKichan and Associates, Inc. of Redwood Falls

- 1857 U.S. General Land Office notes obtained from the Secretary of State's Office show the corner marked with a wood post and a charred stake driven in a mound of earth with trench per instructions.
- 1889 Surveyor's Record Book, page 19, obtained from the County Recorder's Office, contains a survey by Jonah Peterman, County Surveyor. Survey states that corner was found but a description of a monument is not given.
- 1895 Surveyor's Record Book, page 520, obtained from the County Recorder's Office, contains a survey by John Norgaard, County Surveyor. Survey states that all the government corners in Section 31 were found.
- 1897 Surveyor's Record Book, page 128, obtained from the County Recorder's Office, contains a survey by John Norgaard, County Surveyor. Survey shows a stone at corner but does not indicate if found or set.
- 1901 Surveyor's Record Book B, pages 9, 70 and 134 obtained from the County Recorder's Office, contain a collection of what was found or set at government corners by John Norgaard, County Surveyor, in a township re-monumentation survey. Norgaard states "found stone at the intersection of roads set by me 6 years ago in the government mound. A 6" by 6" by 24" jasper granite stone was set at this location, top of monument level with ground. The corner is shown:
5370 feet from the northeast corner of Section 31
- 1929 Surveyor's Record Book, page 520, obtained from the County Recorder's Office, contains a survey by John Norgaard, County Surveyor. Survey shows corner but does not indicate what was found or set. The corner is shown:
2685 feet from the east quarter corner of Section 31
2651 feet from the north quarter corner of Section 6
- 1935 Surveyor's Record Book, page 47, obtained from the County Recorder's Office, contains a survey by John Norgaard. Survey shows corner but does not indicate what was found or set. The corner is shown:
2642 feet from the north quarter corner of Section 5

- 1938 Surveyor's Record Book, page 547, obtained from the County Recorder's Office, contains a survey by John Norgaard, County Surveyor. Survey states that a stone was set for corner but no information is given on how its location was determined. The corner is shown:
on the south side of a road grade
2651 feet from the north quarter corner of Section 6
- No Section Corner Tie Book obtained from the County Highway Engineer's Office does not indicate
Date what was found or set at corner but the following ties are shown to it:
mail box, northwest, 35.5 feet
third fence post, southwest, 61.5 feet
third fence post, southeast, 79.6 feet
- 1977 May, a Certificate of Survey in the south half of Section 31 and notes obtained from Moseng and Zieske Land Surveying, Inc. show that a stone was found at corner. The following ties are shown to corner:
nail and bottle cap in buried cable marker post, northwest, 80.24 feet
nail and bottle cap in top of 18" CMP, southwest, 42.29 feet
power pole, southeast, 49.0 feet
at the intersection of roads north, south, east and west
2685.34 feet from the east quarter corner of Section 31
5370.68 feet from the northeast corner of Section 31
- 1977 May, a Certificate of Location of Government Corner obtained from the County Recorder's Office, signed by Lyle Moseng, RLS #11943, shows that a granite stone was found at corner. A number 4 rebar was set over the granite stone and the following ties were taken:
at the intersection of roads east, west and south
nail and bottle cap in power pole, southeast, 49.00 feet
nail and bottle cap in 18" CMP, southwest, 42.27 feet
nail and bottle cap in brace pole for buried telephone marker, northwest, 80.24 feet
- 1995 June 21, DNR Bureau of Engineering found a rebar at corner. Searched for and found record ties as shown on sketch of reference ties. The rebar was found to be:
5369.48 feet from the northeast corner of Section 31
2685.40 feet from the east quarter corner of Section 31
2643.37 feet from the north quarter corner of Section 5

Analysis of the above information led the DNR Bureau of Engineering to conclude that the found rebar which was set in 1977 over a stone that was set in 1901 in place of the government stake marks the original position of the corner.

CERTIFICATE OF LOCATION OF GOVERNMENT CORNER

Corner to Section 6 Township 114 N Range 38 W No. _____

STATE OF MINNESOTA,

County of Yellow Medicine S.S.

I hereby certify that on the 7th day of May, 1977,
that I, Lyle E. Moseng, a Registered Land Surveyor, ~~County Surveyor,~~
~~County Highway Engineer,~~ ^{SET} found the North Quarter corner of Section 6
~~which was evidenced by~~ on line and midway between the section corners

_____ and I further certify that to perpetuate the
location of such corner I did, at the exact location thereof, place a permanent
marker consisting of #4 rebar with seal.

I further certify that I established _____ references or witness monuments consist-
ing of _____ which reference or witness monuments are
located in the manner following.

The corner is 3 feet south of the center line of the gravel road and 15 feet west of field line.

Dated at Marshall, Minnesota, this 29th day of May, 1980.

Lyle E. Moseng
~~County Surveyor, County Highway Engineer,~~
Registered Land Surveyor No. 11943

183003
OFFICE OF THE REGISTER OF DEEDS

County of Yellow Medicine

I hereby certify that the within instrument was filed in this office for
record on the 16 day of November A.D., 1983, at 2:05 o'clock P.M.

Norman J. Opdahl, County Recorder
Register of Deeds

by Kay Nordahl Deputy

CERTIFICATE OF LOCATION OF GOVERNMENT CORNER

Corner to Section 6 Township 114 N Range 38 W

No. _____

STATE OF MINNESOTA,

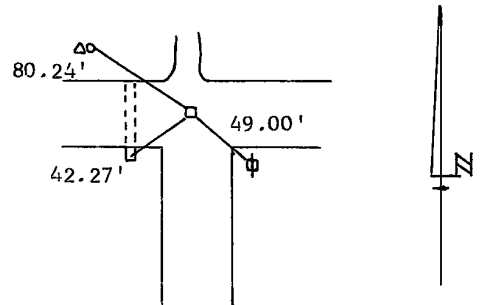
County of Yellow Medicine S.S.

I hereby certify that on the 7th day of May 1977,
that I, Lyle E. Moseng, a Registered Land Surveyor, ~~County Surveyor,~~
~~County Highway Engineer,~~ found the Northeast corner of Section 6
_____ which was evidenced by a granite stone; fnd in the middle of intersection

_____ and I further certify that to perpetuate the
location of such corner I did, at the exact location thereof, place a permanent
marker consisting of #4 rebar with seal.

I further certify that I established 3 references or witness monuments consist-
ing of a power pole, CMP & brace pole fr a which reference or witness monuments are
buried telephone marker
located in the manner following.

Nail & bc in PP	SE	49.00 ft
Nail & bc in 18" CMP	SW	42.27 ft
Nail & bc in brace pole for buried tele marker	NW	80.24 ft



Dated at Marshall, Minnesota, this 29th day of May, 1980.

Lyle E. Moseng
~~County Surveyor, County Highway Engineer~~
Registered Land Surveyor No. 11943

183002

OFFICE OF THE REGISTER OF DEEDS

County of Yellow Medicine

I hereby certify that the within instrument was filed in this office for
record on the 16 day of November A.D., 1983, at 2:00 o'clock P.M.

Norman J. Opdahl, County Recorder

Register of Deeds

by Kay Nordahl Deputy

CERTIFICATE OF LOCATION OF GOVERNMENT CORNER

EAST QUARTER of Section 8, Township 114, Range 38, 5TH P.M.

STATE OF MINNESOTA, County of YELLOW MEDICINE

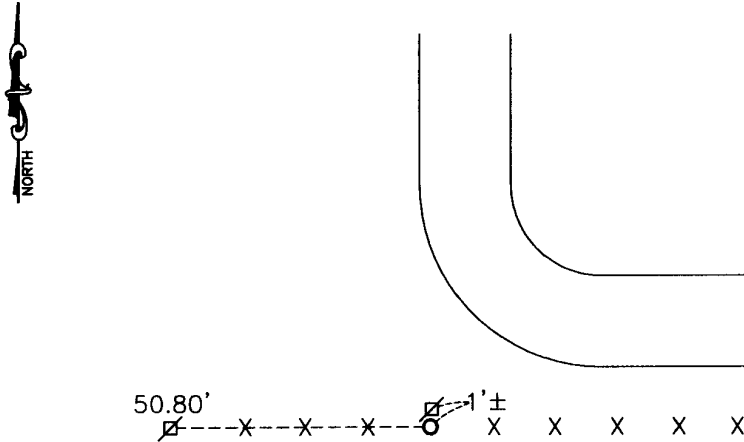
At the corner location shown on the sketch:

On 08-04-2009 found a SQUARE CUT GRANITE STONE
DATE

left monument as found, lowered monument, removed monument (explain)

On _____ placed a _____
DATE

SKETCH OF REFERENCE TIES



Nail and survey marker in power pole West 50.80'
Cut-off power pole South 1'±

Statement of evidence relative to this corner location is on back of page.

I hereby certify that this document and the data contained herein was prepared by me or under my direct supervision

Scott Bush 2/9/2010
SIGNATURE DATE

Registration No. 43844

- Land Surveyor, Professional Engineer
- County Surveyor, County Engineer

OFFICE OF THE COUNTY RECORDER

County of _____

I hereby certify that this document was filed in the Co. Recorders office at _____ .M on the _____ day of _____ A.D. 20 _____

County Recorder _____

By _____, Deputy

DOCUMENT NO. _____

Statement of Evidence

In 1864, Chas F. Davis and J. W. Webb, Jr., did the original subdivision of the township.

On March 22, 1972, Willard Pellinen recorded that he set a $\frac{1}{2}$ " iron pipe at the corner.

On August 4, 2009, Bueltel-Moseng Land Surveying found a square cut granite stone sticking out of the ground 2"±. We did not find a pipe, we held to the stone.

Doc# 250203 Fee: \$0.00 2 Pages

Office of County Recorder

Yellow Medicine County, Minnesota

I hereby certify that the within instrument
was filed on April 14, 2010 at 8:00 AM

N/C

Bueltel-Moseng Land Surveying

P. O. Box 32

Marshall, MN 56258

Kay Zempel, Yellow Medicine County Recorder

By *Kay Zempel* Deputy

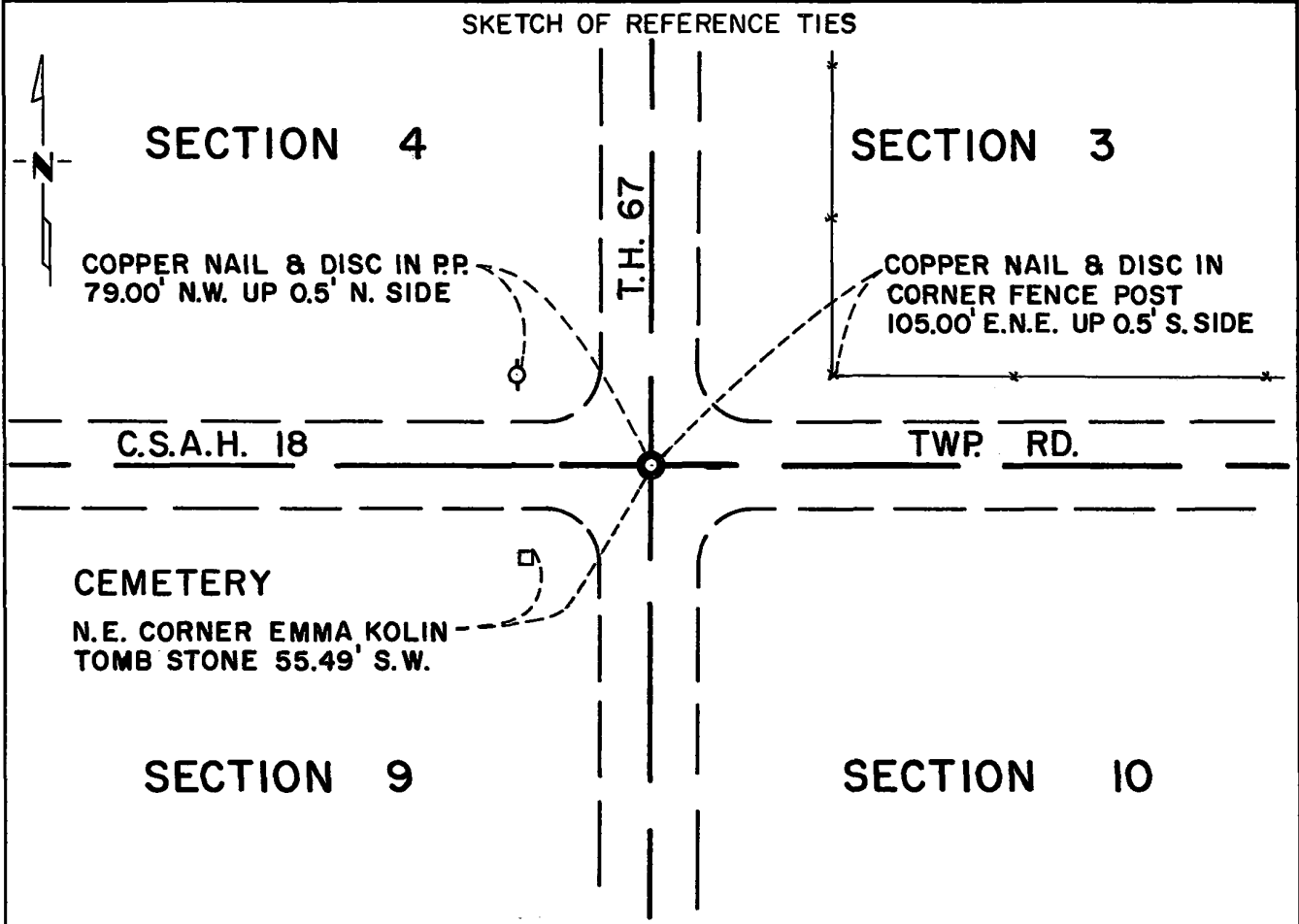
CERTIFICATE OF LOCATION OF GOVERNMENT CORNER

Northeast Corner of Section 9, Township 114N, Range 38W, 5th P.M.

STATE OF MINNESOTA, County of Yellow Medicine

At the corner location shown on the sketch:

- On May 7, 1975 found a 6"x6"x24" Jasper monument on centerline of T.H. 67 and east-west road, down 1.5 feet.
DATE
- left monument as found, lowered monument, removed monument (explain)
- On Dec. 4, 1975 placed a Minnesota Highway Department cast iron monument down 1 inch below road surface.
DATE



Statement of evidence relative to this corner location is on back of page.

I hereby certify that this document and the data contained herein was prepared by me or under my direct supervision.

Richard M. Koefuogshi 3/9/76
SIGNATURE DATE

Registration No. 11526

- Land Surveyor, Professional Engineer
- County Surveyor, County Engineer

OFFICE OF THE REGISTER OF DEEDS
County of Yellow Medicine

I hereby certify that this document was filed in the Reg. of Deeds office at 9:25 A.M. on the 18 day of March A.D., 1976

Register of Deeds Norman J. Optahl

By Kay Nordahl, Deputy

DOCUMENT NO. 166660

RECORDED
GRANTED
INDEXED

Statement of Evidence: Northeast Corner Section 9, Township 114N, Range 38 W.

The original Public Land Survey was run in 1864 and a post set in a mound with pits to mark the corner.

In 1901, John Norgaard found a stone set by adjoining land owners and set a jasper monument to mark the corner.

In 1941, the MHD found a stone monument in place.

On May 6, 1975, the Minnesota Highway Department found a 6"x6"x24" jasper monument.

The origin of the stone could not be determined.

An analysis of the record data indicates that the jasper monument is in the accepted location of the Public Land Survey corner.

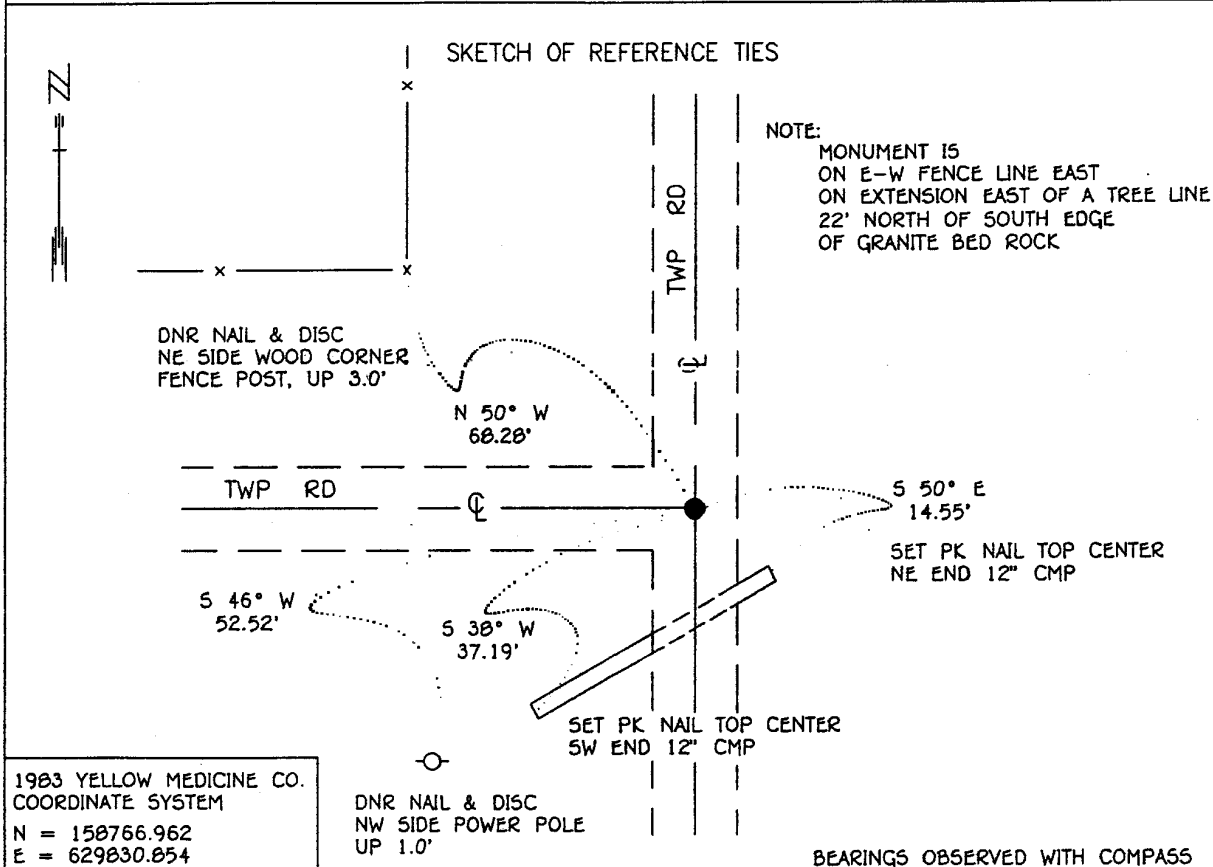
CERTIFICATE OF LOCATION OF GOVERNMENT CORNER

NORTHEAST Corner of Section 10, Township 114 N, Range 38 W, 5th P.M.

STATE OF MINNESOTA, County of YELLOW MEDICINE

At the corner location shown on the sketch:

- On 8-2-93 found a 6" x 6" GRANITE STONE, DOWN 2.0'
DATE
- left monument as found, lowered monument, removed monument (explain)
- On 1-27-94 Placed a 3/4" x 24" REBAR WITH ALUMINUM CAP STAMPED
DATE "DNR SURVEY MARKER", DOWN 0.4, OVER STONE



1983 YELLOW MEDICINE CO.
COORDINATE SYSTEM
N = 158766.962
E = 629830.854

DNR NAIL & DISC
NW SIDE POWER POLE
UP 1.0'

BEARINGS OBSERVED WITH COMPASS

Statement of evidence relative to this corner location is on back of page.

SNA01027.00.00.01
J.B.M. FEB '94

I hereby certify that this document and the data contained herein was prepared by me or under my direct supervision.
Lowell R. Demerding 4-22-94
SIGNATURE DATE
Registration No. 17005
 Land Surveyor, Professional Engineer
 County Surveyor, County Engineer

OFFICE OF THE COUNTY RECORDER
County of Yellow Medicine
I hereby certify that this document was filed in the Co. recorders office at 9:35 A.M. on the 22 day of June A.D., 1994
County Recorder Harold Ojala
By _____, Deputy
DOCUMENT NO. 206996

Northeast Corner Section 10, Township 114 North, Range 38 West

The DNR Bureau of Engineering contacted the following offices for information on this corner:
MN. Secretary of State
Yellow Medicine County Recorder and Highway Engineer

- 1864 The U.S. General Land Office field notes in the Secretary of State's Office describe this corner as a set post.
- 1884 Surveyor's Record Book, on page 21, on file in the Yellow Medicine County Recorder's Office contains a survey by Jonah Peterman, County Surveyor. Survey describes this corner as being found, but does not indicate what was found or set. Corner is shown to measure:
40.37 chains from the north quarter corner Section 11
40.37 chains from the east quarter corner Section 3
- 1892 Surveyor's Record Book, on page 55, on file in the Yellow Medicine County Recorder's Office contains a survey by Jonah Peterman, County Surveyor. Survey describes this corner as being found, but does not indicate what was found or set. Corner is shown to measure:
40.37 chains from the north quarter corner Section 11
40.12 1/2 chains from the east quarter corner Section 10
- 1901 Surveyor's Record Book B, on page 138, on file in the Yellow Medicine County Recorder's Office, contains a collection of what was found at government section corners by John Norgaard, County Surveyor, in a re-monumentation survey. Norgaard states: "Found stake set by adjoining landowners in the government mound several years ago." Set a 6" by 6" by 24" jasper granite stone at this location, top level with ground.
- 1993 August 2, the DNR Bureau of Engineering conducted a search for this corner and dug a 4 ft north-south by 2 ft. east-west hole at the intersection of roads north-south and west. At a depth of two feet found a 6" by 6" granite stone. Stone is at the intersection of said roads. Placed a DNR Survey Marker directly over the stone.

Analysis of the available information led the DNR Bureau of Engineering to conclude that the found stone marks the location of the corner.

CERTIFICATE OF LOCATION OF GOVERNMENT CORNER

EAST QUARTER Corner of Section 13, Township 114 N, Range 38 W, 5th P.M.

STATE OF MINNESOTA, County of YELLOW MEDICINE

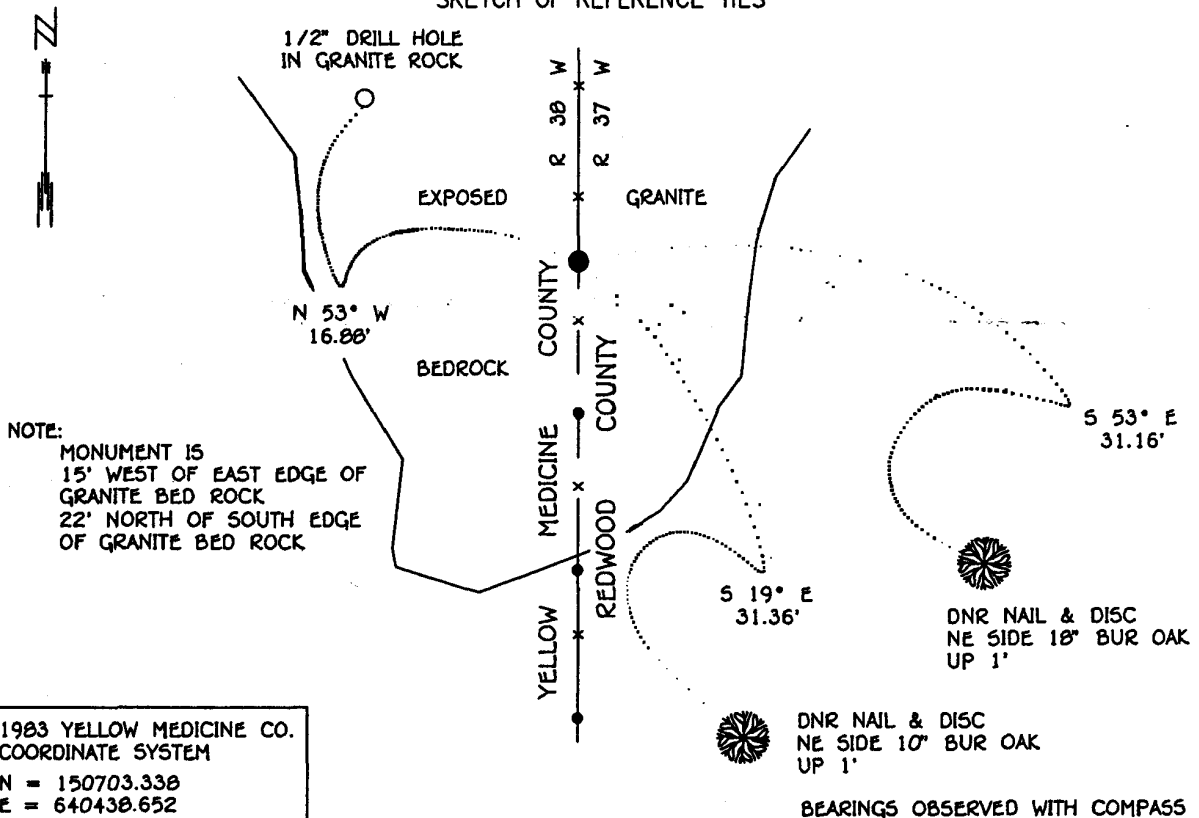
At the corner location shown on the sketch:

On 1-25-94 found a 7/8" OUTSIDE DIAMETER IRON PIPE WITH A 1 1/2" x 2" STEEL TUBE OVER IT
DATE
IMBEDDED IN EXPOSED GRANITE ROCK

left monument as found, lowered monument, removed monument (explain)

On _____ Placed a _____
DATE

SKETCH OF REFERENCE TIES



Statement of evidence relative to this corner location is on back of page.

SNAD1027.00.00.01
J.B.M. FEB '94

I hereby certify that this document and the data contained herein was prepared by me or under my direct supervision.

Lowell R. Pomeroy 4-22-94
SIGNATURE DATE

Registration No. 17005

- Land Surveyor, Professional Engineer
- County Surveyor, County Engineer

OFFICE OF THE COUNTY RECORDER
County of Yellow Medicine

I hereby certify that this document was filed in the Co. recorders office at 9:50 A.M. on the 22 day of June A.D., 1994

County Recorder Normand G. Groll
By _____, Deputy

DOCUMENT NO. 206999

East Quarter Corner Section 13, Township 114 North, Range 38 West

The DNR Bureau of Engineering contacted the following offices for information on this corner:

**MN. Secretary of State
Yellow Medicine County Recorder and Highway Engineer
Redwood County Recorder and Highway Engineer**

- 1857** The U.S. General Land Office field notes in the Secretary of State's Office describe this corner as a set post from which a:
Br. Oak 12 in. diam. bears S 2° W 200 lks.
Br. Oak 6 in. diam. bears S 23 1/2° E 262 lks.
- 1901** Surveyor's Record Book B, on file in the Yellow Medicine County Recorder' Office, contains a collection of what was found at government section corners by John Norgaard, County Surveyor, in a re-monumentation survey. Quarter corner were not set in this survey, however the plat of this survey, on page 27 of this record book, shows this corner measures:
2654 ft. from the northeast corner Section 24
- 1926** Surveyor's Record Book, on page 495, on file in the Yellow Medicine County Recorder's Office contains a survey by John Norgaard, County Surveyor. Survey does not describe this corner, but it is shown to measure:
2693 ft. from the northeast corner Section 13
2652 ft. from the northeast corner Section 24
- 1993** The DNR Bureau of Engineering conducted a search for this corner and found a 7/8" iron rod with steel tube over it, used as a end steel fence post on a north-south fence. The iron rod is imbedded in exposed granite bedrock. Searched for but did not find the government bearing trees. The iron rod marks a change in fence material, wood posts to the north, steel posts to the south. The iron rod was found to measure:
2675.51 ft. from the northeast corner Section 24
2716.87 ft. from the northeast corner Section 13

Analysis of the available information led the DNR Bureau of Engineering to conclude that the iron rod on the north-south fence line marks the location of the corner.

CERTIFICATE OF LOCATION OF GOVERNMENT CORNER

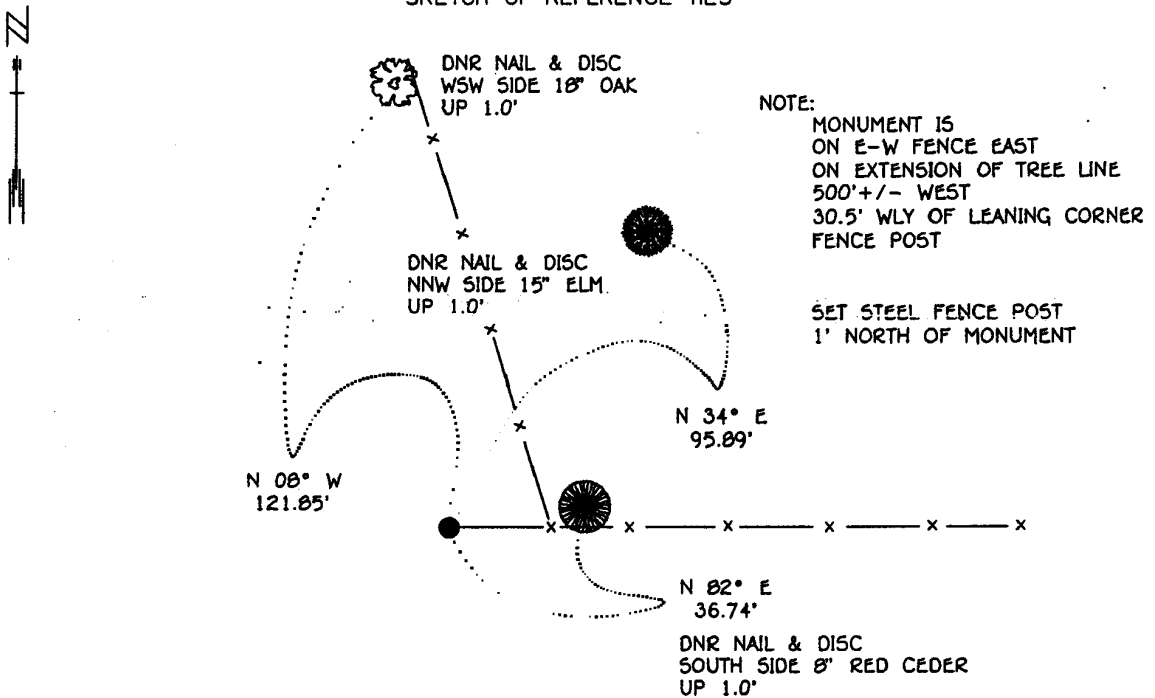
NORTH QUARTER Corner of Section 13, Township 114 N, Range 30 W, 5th P.M.

STATE OF MINNESOTA, County of YELLOW MEDICINE

At the corner location shown on the sketch:

- On _____ found a _____
DATE _____
- left monument as found, lowered monument, removed monument (explain)
- On 1-27-94 Placed a 3/4" x 24" REBAR WITH ALUMINUM CAP STAMPED
DATE "DNR SURVEY MARKER", UP 0.20'

SKETCH OF REFERENCE TIES



NOTE:
 MONUMENT IS
 ON E-W FENCE EAST
 ON EXTENSION OF TREE LINE
 500'+/- WEST
 30.5' WLY OF LEANING CORNER
 FENCE POST

SET STEEL FENCE POST
 1' NORTH OF MONUMENT

1983 YELLOW MEDICINE CO.
 COORDINATE SYSTEM
 N = 153459.676
 E = 637763.779

BEARINGS OBSERVED WITH COMPASS

Statement of evidence relative to this corner location is on back of page.

SNA01027.00.00.01
J.B.M. MAR '94

I hereby certify that this document and the data contained herein was prepared by me or under my direct supervision.

Lowell R. Pannarino 4-22-94
SIGNATURE DATE

Registration No. 17005

- Land Surveyor, Professional Engineer
- County Surveyor, County Engineer

OFFICE OF THE COUNTY RECORDER
County of Yellow Medicine

I hereby certify that this document was filed in the Co. recorders office at 9:45 A.M. on the 22 day of June A.D., 1994

County Recorder Norman Godale
By _____, Deputy

DOCUMENT NO. 206998

North Quarter Corner Section 13, Township 114 North, Range 38 West

The DNR Bureau of Engineering contacted the following offices for information on this corner:
MN. Secretary of State
Yellow Medicine County Recorder and Highway Engineer

1864 The U.S. General Land Office field notes in the Secretary of State's Office describe this corner as a post in mound with pits.

1926 Surveyor's Record Book, on page 495, on file in the Yellow Medicine County Recorder's Office contains a survey by John Norgaard, County Surveyor. Survey does not describe this corner, but it is shown to measure:
2676 ft. from the northeast corner Section 13
2676 ft. from the northwest corner Section 13

1993 The DNR Bureau of Engineering conducted a search for this corner and located a east-west fence line near the corner area. A corner fence post on this east-west fence and a fence line running northwest was found to measure:
2704.72 ft. from the northwest corner section 13
A check on the total mile distance of the north line of Section 13 was found to be 5347.88 compared to the 1926 distance of 5352. A position for this corner was computed per the 1926 survey and was found to be:
2673.94 ft. from adjoining section corners
4.73 ft. south of the east-west fence.

As the fence is old and marks a well defined line it was concluded to establish the position for this corner per the 1926 survey, and on the east-west fence line. It is believed that the fence was built to the 1926 survey. The corner fence post for the fence to the northwest appears to be for convenience only.

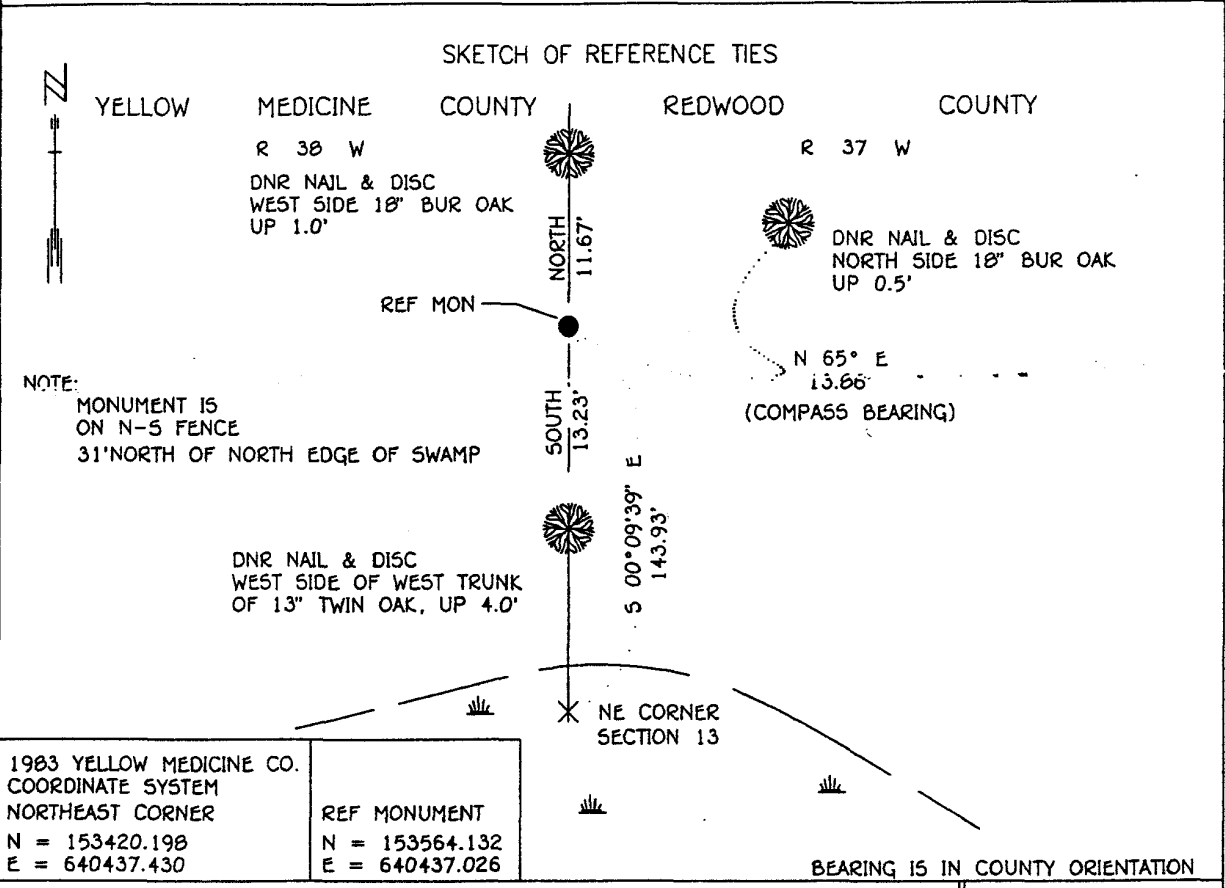
CERTIFICATE OF LOCATION OF GOVERNMENT CORNER

NORTHEAST Corner of Section 13, Township 114 N, Range 38 W, 5th P.M.

STATE OF MINNESOTA, County of YELLOW MEDICINE

At the corner location shown on the sketch:

- On _____ found a _____
DATE
- left monument as found, lowered monument, removed monument (explain)
- On 3-11-94 Placed a 3/4" IRON ROD WITH PLASTIC CAP, UP 1.8'
DATE



Statement of evidence relative to this corner location is on back of page. SNA01027.00.00.01
J.B.M. MARCC '94

I hereby certify that this document and the data contained herein was prepared by me or under my direct supervision.

Lowell R. Pommeroy 4-22-94
SIGNATURE DATE

Registration No. 17005

Land Surveyor, Professional Engineer
 County Surveyor, County Engineer

OFFICE OF THE COUNTY RECORDER
 County of Yellow Medicine

I hereby certify that this document was filed in the Co. recorders office at 9:40 A.M. on the 22 day of June A.D., 1994

County Recorder Norman Oudall
 By _____, Deputy
 DOCUMENT NO. 206997

Northeast Corner Section 13, Township 114 North, Range 38 West

The DNR Bureau of Engineering contacted the following offices for information on this corner:

MN. Secretary of State

Yellow Medicine County Recorder and Highway Engineer

Redwood County Recorder and Highway Engineer

1857 The U.S. General Land Office field notes in the Secretary of State's Office describe this corner as a set post from which a:

Br. Oak 12 in. diam. bears N 1° W 262 lks.

Br. Oak 8 in. diam. bears N 7° E 297 lks.

Aspen 8 in. diam. bears S 8° W _____

Aspen 8 in. diam. bears S 17° E 163 lks.

1897 Surveyor's Record Book, on page 139, on file in the Yellow Medicine County Recorder's Office contains a survey by John Norgaard, County Surveyor. Survey does not describe this corner, but it is shown to measure:

2648 ft. from the east quarter corner Section 12

1901 Surveyor's Record Book B, on page 135, on file in the Yellow Medicine County Recorder's Office, contains a collection of what was found at government section corners by John Norgaard, County Surveyor, in a re-monumentation survey. Norgaard states: "Found stake as correspond with the stump of the Govt B.T. Br. Oak 12" N 1° W 262 links, other B.T. gone." Set a 6" by 6" by 24" jasper granite stone at this location, top of monument 5" above ground.

1926 Surveyor's Record Book, on page 495, on file in the Yellow Medicine County Recorder's Office contains a survey by John Norgaard, County Surveyor. Survey does not describe this corner, but it is shown to measure:

2676 ft. from the north quarter corner Section 13

2693 ft. from the east quarter corner Section 13

5352 ft. from the northeast corner Section 14

1993 The DNR Bureau of Engineering conducted a search for this corner and found the corner area to be under 6 to 10 feet of water. This area is in a granite quarry, prone to seasonal flooding, making the corner search difficult. Did not find the government bearing trees or any type of corner monument. Computed a position for this corner based on the Norgaard's 1926 survey and found it to measure:

2716.87 ft. from the east quarter corner Section 13

5347.88 ft. from the northeast corner Section 14

5269.33 ft. from the northeast corner Section 12

Analysis of the available information led the DNR Bureau of Engineering to conclude that the position computed per the 1926 survey marks the location of the corner.

CERTIFICATE OF LOCATION OF GOVERNMENT CORNER

EAST QUARTER Corner of Section 14, Township 114 N, Range 30 W, 5th P.M.

STATE OF MINNESOTA, County of YELLOW MEDICINE

At the corner location shown on the sketch:

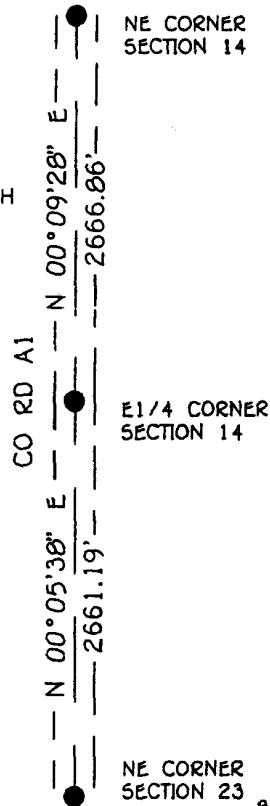
- On _____ found a _____
DATE
- left monument as found, lowered monument, removed monument (explain)
- On 2-14-94 Placed a 3/4" x 12" REBAR WITH ALUMINUM CAP STAMPED
DATE "DNR SURVEY MARKER"

SKETCH OF REFERENCE TIES



NOTE:
 MONUMENT IS
 ON CL OF N-5 ROAD
 IN LINE WITH FIELD DIVISION EAST
 IN LINE WITH TREE LINE WEST
 202' SOUTH OF CL E-W CO. DITCH

GOOD TIES NOT AVAILABLE



BEARINGS ARE IN COUNTY ORIENTATION

1983 YELLOW MEDICINE CO.
 COORDINATE SYSTEM
 N = 150822.957
 E = 635082.656

Statement of evidence relative to this corner location is on back of page.

SNA01027.00.00.01
 J.B.M. FEB '94

I hereby certify that this document and the data contained herein was prepared by me or under my direct supervision.

Lowell R. Romer 4-22-94
 SIGNATURE DATE

Registration No. 17005

- Land Surveyor, Professional Engineer
- County Surveyor, County Engineer

OFFICE OF THE COUNTY RECORDER
 County of Yellow Medicine

I hereby certify that this document was filed in the Co. recorders office at 10:00 A.M. on the 22 day of June A.D., 19 94

County Recorder Norman G. Gaudette
 By _____, Deputy

DOCUMENT NO. 207001

East Quarter Corner Section 14, Township 114 North, Range 38 West

**The DNR Bureau of Engineering contacted the following offices for information on this corner:
MN. Secretary of State
Yellow Medicine County Recorder and Highway Engineer**

- 1864 The U.S. General Land Office field notes in the Secretary of State's Office describe this corner as a post in mound with pits.**
- 1926 Surveyor's Record Book, on page 495, on file in the Yellow Medicine County Recorder's Office contains a survey by John Norgaard, County Surveyor. Survey does not describe this corner, but it is shown to measure:
2645 ft. from the northeast corner Section 23**
- 1993 July 21, the DNR Bureau of Engineering conducted a search for this corner and located the intersection of a north-south road and occupation lines east and west. The area of the corner is in a cut section of road. This intersection of occupation was found to measure:
2661.19 ft. from the northeast corner Section 23
2666.86 ft. from the northeast corner Section 14**

Analysis of the available information led the DNR Bureau of Engineering to conclude that the intersection of the north-south road and occupation lines east and west marks the location of the corner. As this is a cut section of road, any evidence of a monument would probably have been destroyed.

CERTIFICATE OF LOCATION OF GOVERNMENT CORNER

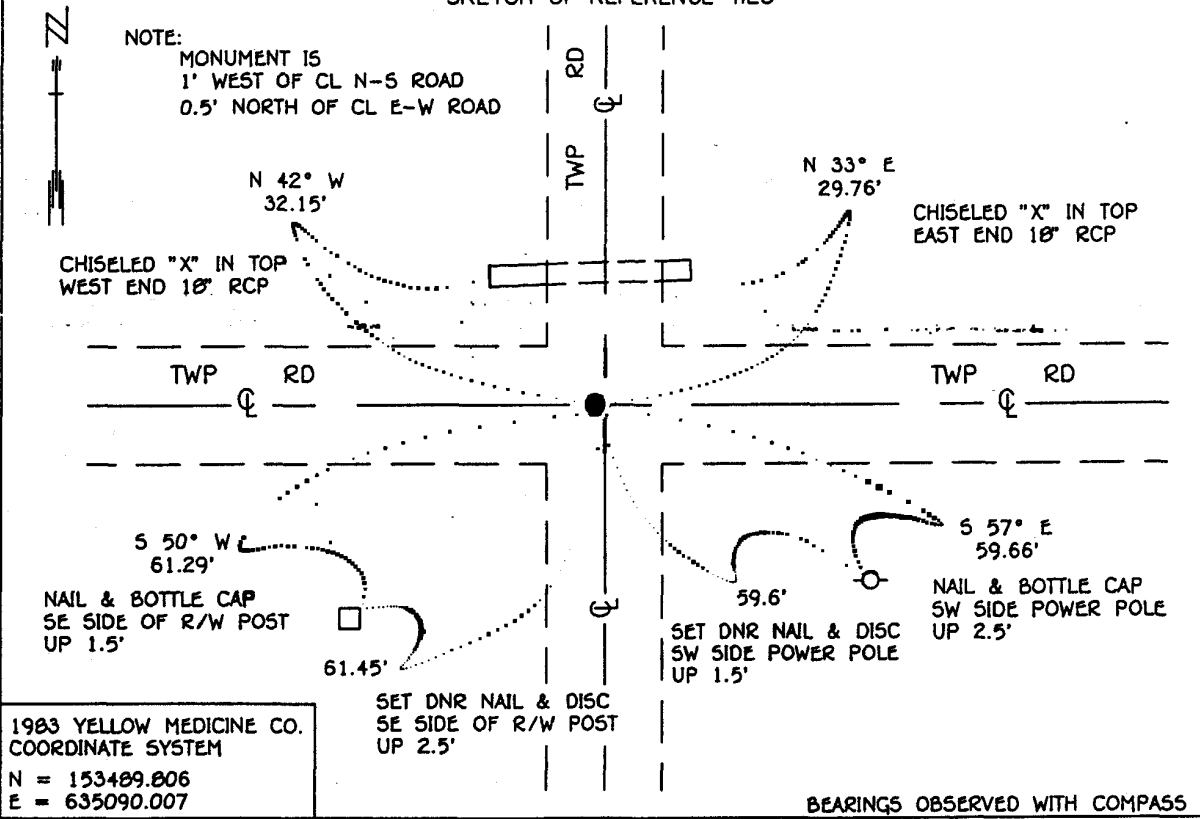
NORTHEAST Corner of Section 14, Township 114 N, Range 38 W, 5th P.M.

STATE OF MINNESOTA, County of YELLOW MEDICINE

At the corner location shown on the sketch:

- On 7-19-93 found a 60d SPIKE, DOWN 0.5', OVER A 6" x 6" CUT STONE
DATE DOWN 38"
- left monument as found, lowered monument, removed monument (explain)
- On 7-19-93 Placed a 3/4" x 24" REBAR WITH ALUMINUM CAP STAMPED
DATE "DNR SURVEY MARKER", OVER STONE, DOWN 0.2'

SKETCH OF REFERENCE TIES



Statement of evidence relative to this corner location is on back of page.

SNA01027.00.00.01
 J.B.M. FEB '94

I hereby certify that this document and the data contained herein was prepared by me or under my direct supervision.

Lowell R. Pommeroy 4-22-94
SIGNATURE DATE

Registration No. 17005

- Land Surveyor, Professional Engineer
- County Surveyor, County Engineer

OFFICE OF THE COUNTY RECORDER
 County of Yellow Medicine

I hereby certify that this document was filed in the Co. recorders office at 9:55 A.M. on the 22 day of June A.D., 1994

County Recorder D. Marshall Andale
 By _____, Deputy

DOCUMENT NO. 207000

Northeast Corner Section 14, Township 114 North, Range 38 West

The DNR Bureau of Engineering contacted the following offices for information on this corner:

MN. Secretary of State

Yellow Medicine County Recorder and Highway Engineer

- 1864** The U.S. General Land Office field notes in the Secretary of State's Office describe this corner as a post in mound with pits.
- 1901** Surveyor's Record Book B, on page 139, on file in the Yellow Medicine County Recorder's Office, contains a collection of what was found at government section corners by John Norgaard, County Surveyor, in a re-monumentation survey. Norgaard states: "Found stone at the intersection of roads set by me 6 years ago in the government mound. Set top of monument level with ground." Set a 6" by 6" by 24" jasper granite stone at this location.
- 1926** Surveyor's Record Book, on page 495, on file in the Yellow Medicine County Recorder's Office contains a survey by John Norgaard, County Surveyor. Survey does not describe this corner, but it is shown to measure:
2676 ft. from the north quarter corner Section 13
- 1966** Section corner tie book, on file in the County Highway Engineer's Office, shows six reference ties to this corner. A note is made that the monument at the corner is 30" deep.
- 1967** Transit & Topog field book C.P. 67-a1, on file in the County Highway Engineer's Office, describes the corner as such: "Located 6"x 6"x 2' granite monument 30" below surface. Placed bolt 1" below surface & tied as shown". Three reference ties are shown to this corner. This information is also shown on the alignment map for this project. Here the corner is labeled as a spike. From stationing this corner measures:
5331.8 ft. from the northeast corner Section 23
- 1993** July 19, the DNR Bureau of Engineering conducted a search for this corner and located ties of record. At the cross of these ties, dug a 2 ft. by 2 ft. hole to a depth of 38" and found a 6" by 6" cut granite stone. Placed a DNR Survey Marker over the stone.

Analysis of the available information led the DNR Bureau of Engineering to conclude that the found stone marks the location of the corner.

CERTIFICATE OF LOCATION OF GOVERNMENT CORNER

EAST QUARTER Corner of Section 15, Township 114, Range 38, 5TH P.M.

STATE OF MINNESOTA, County of YELLOW MEDICINE

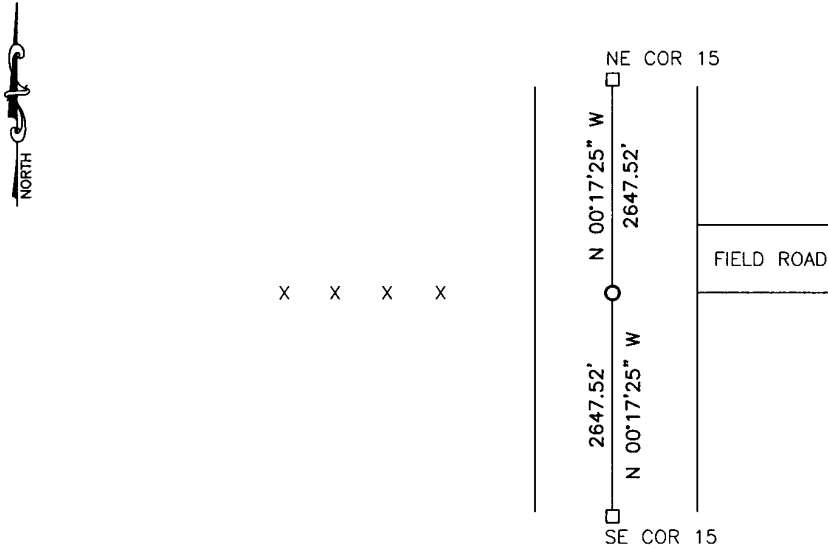
At the corner location shown on the sketch:

On _____ found a _____
DATE

left monument as found, lowered monument, removed monument (explain)

On 4/29/15 placed a 5/8" iron with seal #43844
DATE

SKETCH OF REFERENCE TIES



Minnesota State Plane Coordinate
System Yellow Medicine County Datum
NAD83 (1996)

NO TIES

N: 150774.347
E: 629734.410

Statement of evidence relative to this corner location is on back of page.

I hereby certify that this document and the data contained herein was prepared by me or under my direct supervision

David Butch 3/2/16
SIGNATURE DATE

Registration No. 43844

Land Surveyor, Professional Engineer
 County Surveyor, County Engineer

OFFICE OF THE COUNTY RECORDER

County of _____

I hereby certify that this document was filed in the Co. Recorders office at _____ .M on the _____ day of _____ A.D. 20 _____

County Recorder _____

By _____, Deputy

DOCUMENT NO. _____

Statement of Evidence

In October, 1864, Chas E. Davis and J.W. Webb Jr. did the original subdivision of the township.

On April 29, 2015, Bueltel-Moseng Land Surveying set a survey spike with seal #43844 midway and online. It is in line with the fence line to the west and field road to the east.

Doc# 263811 Fee: \$0.00 2 Pages

Property & Public Services
Property Records Division
Yellow Medicine County, Minnesota

I hereby certify that the within instrument
was filed on March 28, 2016 at 11:20 AM

Janel Timm, Yellow Medicine County Recorder

By Debra Blood Deputy

CERTIFICATE OF LOCATION OF GOVERNMENT CORNER

EAST QUARTER Corner of Section 16, Township 114, Range 38, 5TH P.M.

STATE OF MINNESOTA, County of YELLOW MEDICINE

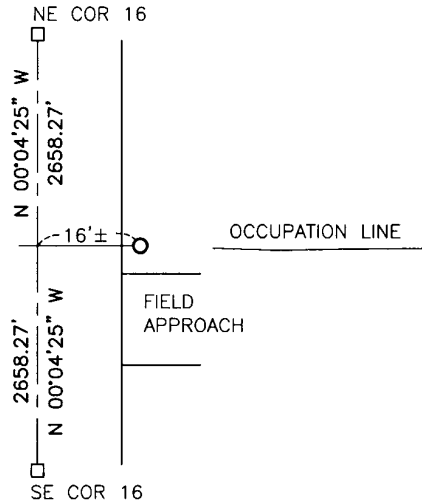
At the corner location shown on the sketch:

On _____ found a _____
DATE

left monument as found, lowered monument, removed monument (explain)

On 4/29/15 placed a survey spike with seal #43844
DATE

SKETCH OF REFERENCE TIES



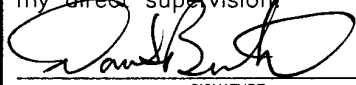
Minnesota State Plane Coordinate
System Yellow Medicine County Datum
NAD83 (1996)

NO TIES

N: 150719.020
E: 624410.174

Statement of evidence relative to this corner location is on back of page.

I hereby certify that this document and the data contained herein was prepared by me or under my direct supervision.


SIGNATURE

3/2/16
DATE

Registration No. 43844

- Land Surveyor, Professional Engineer
- County Surveyor, County Engineer

OFFICE OF THE COUNTY RECORDER

County of _____

I hereby certify that this document was filed in the Co. Recorders office at _____ .M on the _____ day of _____ A.D. 20 ____

County Recorder _____

By _____, Deputy

DOCUMENT NO. _____

Statement of Evidence

In October, 1864, Chas E. Davis and J.W. Webb Jr. did the original subdivision of the township.

On July 23, 1891, Jonah Peterman established the corner to be midway and online between the section corners.

On April 29, 2015, Bueltel-Moseng Land Surveying set a survey spike with seal #43844 midway and online as recorded on the 1891 survey. It is 16± east of centerline of the road, north of the field approach, and in line with an occupational line to the east.

Doc# 263812 Fee: \$0.00 2 Pages

Property & Public Services
Property Records Division
Yellow Medicine County, Minnesota

I hereby certify that the within instrument
was filed on March 28, 2016 at 11:25 AM

Janel Timm, Yellow Medicine County Recorder

By Debra Blood Deputy

CERTIFICATE OF LOCATION OF GOVERNMENT CORNER

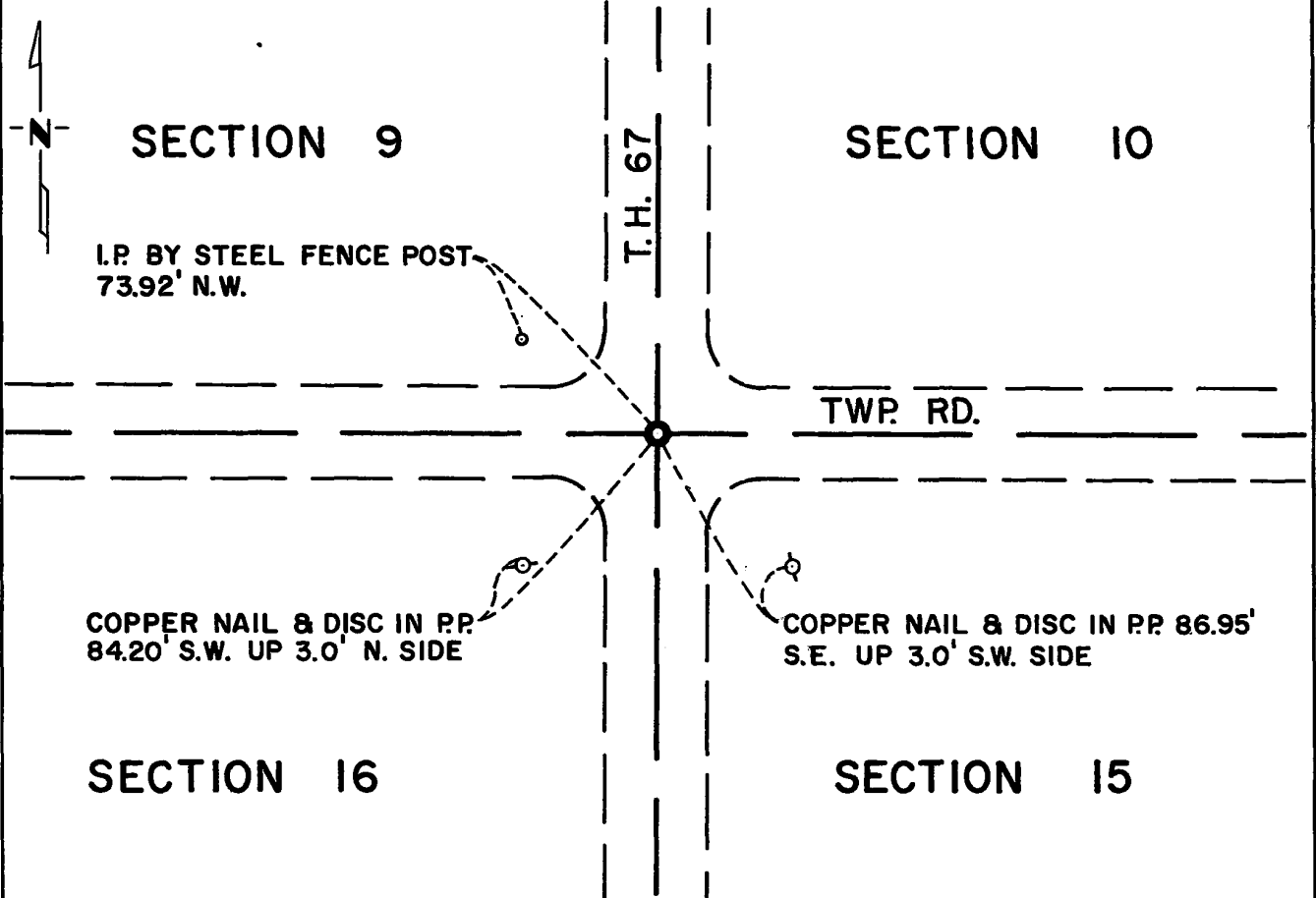
Northeast Corner of Section 16, Township 114N, Range 38W, 5th P.M.

STATE OF MINNESOTA, County of Yellow Medicine

At the corner location shown on the sketch:

- On May 6, 1975 found a 6"x6"x24" Jasper monument on centerline north-south
DATE
T.H. 67 and Twp. Rd. east-west.
 - left monument as found, lowered monument, removed monument (explain)
- On Dec. 4, 1975 placed a Minnesota Highway Department cast iron monument
DATE
down 1 inch below road surface.

SKETCH OF REFERENCE TIES



Statement of evidence relative to this corner location is on back of page.

RECORDED
GRANTOR ✓
GRANTEE
INDEXED

I hereby certify that this document and the data contained herein was prepared by me or under my direct supervision.

Richard M. Koslowski 3/9/76
SIGNATURE DATE

Registration No. 11526

- Land Surveyor, Professional Engineer
- County Surveyor, County Engineer

OFFICE OF THE REGISTER OF DEEDS
County of Yellow Medicine

I hereby certify that this document was filed in the Reg. of Deeds office at 9:05 A.M. on the 18 day of March A.D., 1976

Register of Deeds Norman J. Opdahl

By Kay Nerdahl, Deputy

DOCUMENT NO. 166656

Statement of Evidence: Northeast Corner Section 16, Township 114N, Range 38W.

The original Public Land Survey was run in 1864 and a post was set in a mound with pits to mark the corner.

In 1891, Jonah Peterman found the original government corner.

In 1901, John Norgaard found a stone and set a jasper monument to mark the corner.

In 1923, John Norgaard found the jasper monument in place.

In 1941, the MHD found a stone monument in place.

On May 6, 1975, the Minnesota Highway Department found a 6"x6"x24" jasper monument.

The origin of the stone could not be determined.

An analysis of the record data indicates that the jasper monument is in the accepted location of the Public Land Survey corner.

CERTIFICATE OF LOCATION OF GOVERNMENT CORNER

Corner to Sec. 19 T. 114 N R. 38 W No. 5TH PM

State of Minnesota, }
County of } ss.

I hereby certify that on the 19TH day of JULY 1988

I found the SE SECTION corner of SECTION 19 T 114 N R 38 W
which was evidenced by AN IRON PIN 2" BELOW SURFACE OF
BITUMINOUS

and I further certify that to perpetuate the location of such corner, I did, at the exact location thereof, place
a permanent marker consisting of

I further certify that I established
reference or witness monuments consisting of

which reference or witness monuments are located in the manner following:

CORNER IS IN THE CENTER OF INTERSECTION. A 3" DIAMETER
HOLE EXISTS IN THE BITUMINOUS. NO TIES AVAILABLE.

Dated at Tyler, Minn., this 22th day of July 1988

Document No. **193568**
OFFICE OF REGISTER OF DEEDS

RECORDED	<input checked="" type="checkbox"/>
GRANTOR	<input checked="" type="checkbox"/>
GRANTEE	<input checked="" type="checkbox"/>
INDEXED	<input checked="" type="checkbox"/>

C. O. M. Bergquist
County Surveyor or Highway Engineer.

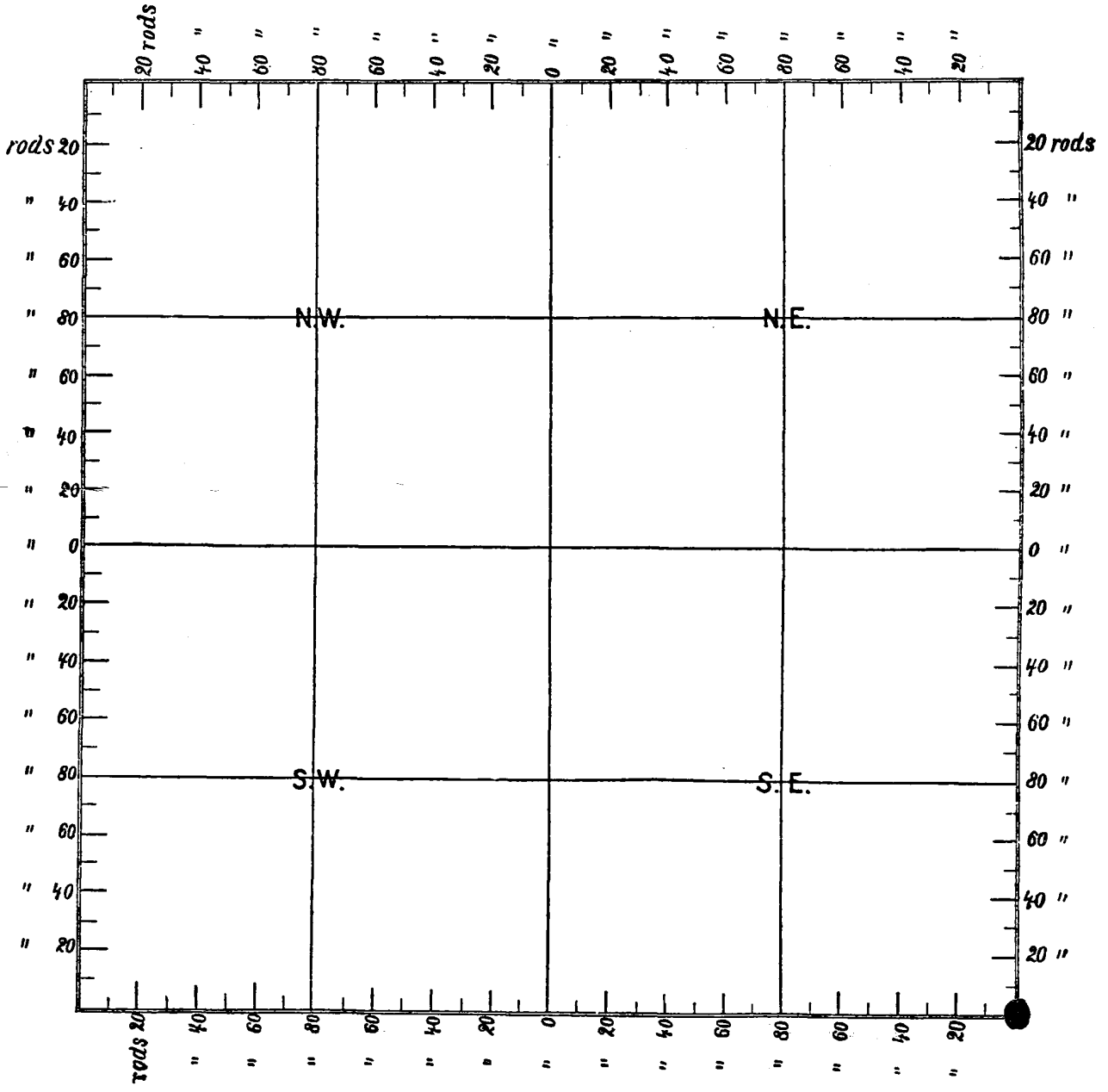
County of Yellow Medicine

I hereby certify that the within instrument was filed in this office for record on the 27
day of July A. D. 19 88 at 10:35 o'clock A. M.

Norman J. Opdahl, County Recorder
Register of Deeds.

By Kay Nordahl Deputy.

SECTION 19 TOWNSHIP 114 N RANGE 38 W P.M. 5TH



A9 Land Eng Svec NC

CERTIFICATE OF LOCATION OF GOVERNMENT CORNER

Corner to Sec. 19 T. 114 N R. 38 W No. 5TH P.M.

State of Minnesota, }
County of } ss.

I hereby certify that on the 19TH day of JULY 1988
I found the NE SECTION corner of SECTION 19 T 114 N R 38 W
which was evidenced by AN IRON PIN 6" BELOW SURFACE OF GRAVEL
ROAD

and I further certify that to perpetuate the location of such corner, I did, at the exact location thereof, place
a permanent marker consisting of

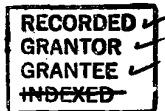
I further certify that I established
reference or witness monuments consisting of

which reference or witness monuments are located in the manner following:

CORNER IS IN THE CENTER OF T INTERSECTION
NO TIES AVAILABLE

Dated at Tyler, Minn., this 22nd day of July 1988

Document No. **193567**
OFFICE OF REGISTER OF DEEDS
County of Yellow Medicine



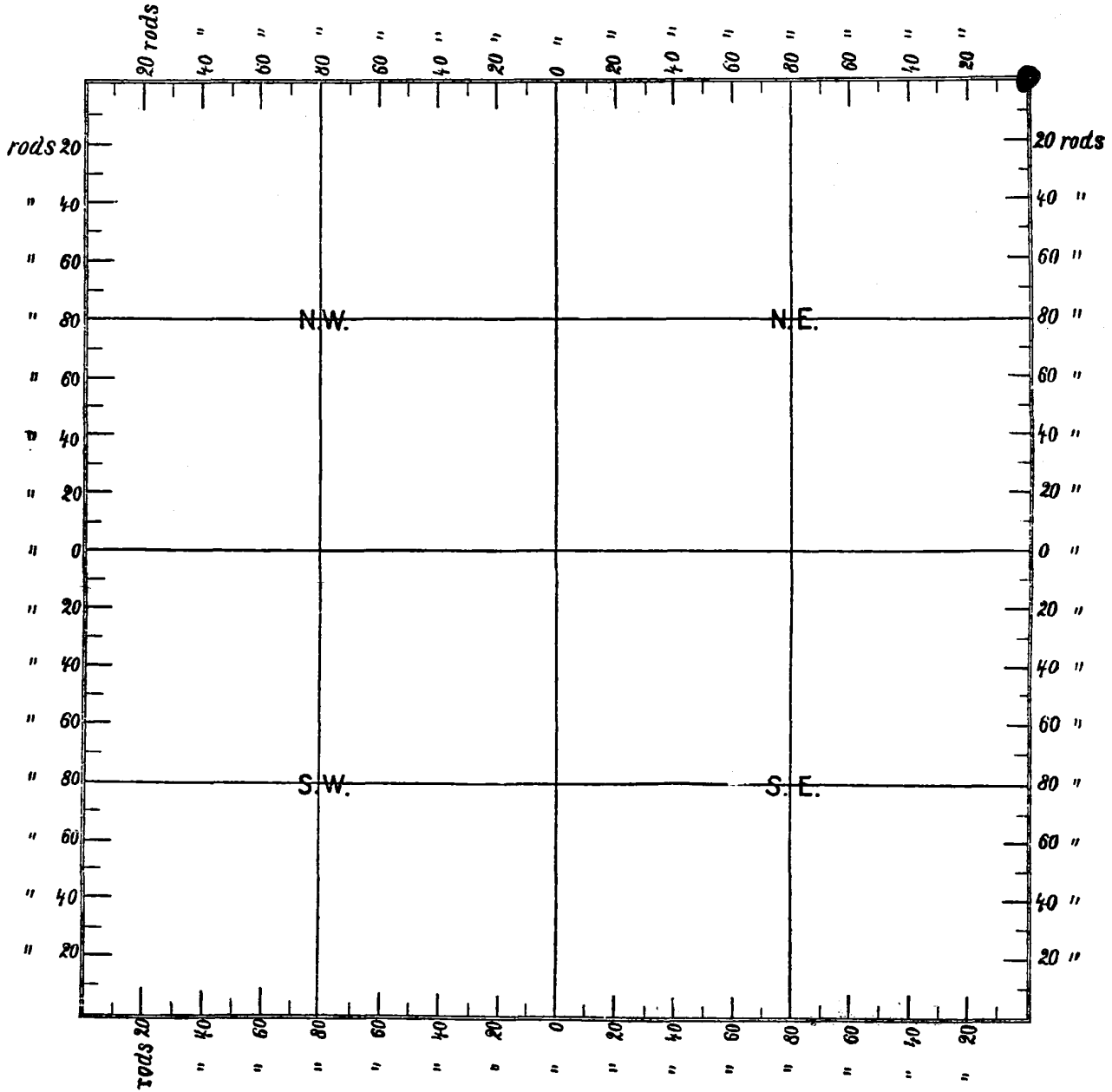
C. M. Bergquist
County Surveyor or Highway Engineer.

I hereby certify that the within instrument was filed in this office for record on the 27
day of July A. D. 19 88 at 10:30 o'clock A. M.

Norman J. Opdahl, County Recorder
Register of Deeds.

By Kay Nerdahl Deputy.

SECTION 19 TOWNSHIP 114 N RANGE 38 W P.M. 5TH



Index No.

Statement of evidence relative to this corner location is on back of page.

I hereby certify that this document and the data contained herein was prepared by me or under my direct supervision.

Jesse D. Zeig
Jesse D. Zeig

9/26/16
DATE

Registration No. 44996

Land surveyor County Surveyor

Doc# 264895 Fee: \$0.00 2 Pages

Property & Public Services
Property Records Division
Yellow Medicine County, Minnesota
I hereby certify that the within instrument was filed on September 28, 2016 at 9:45 AM

Janel Timm, Yellow Medicine County Recorder

By Kelly Kruger Deputy

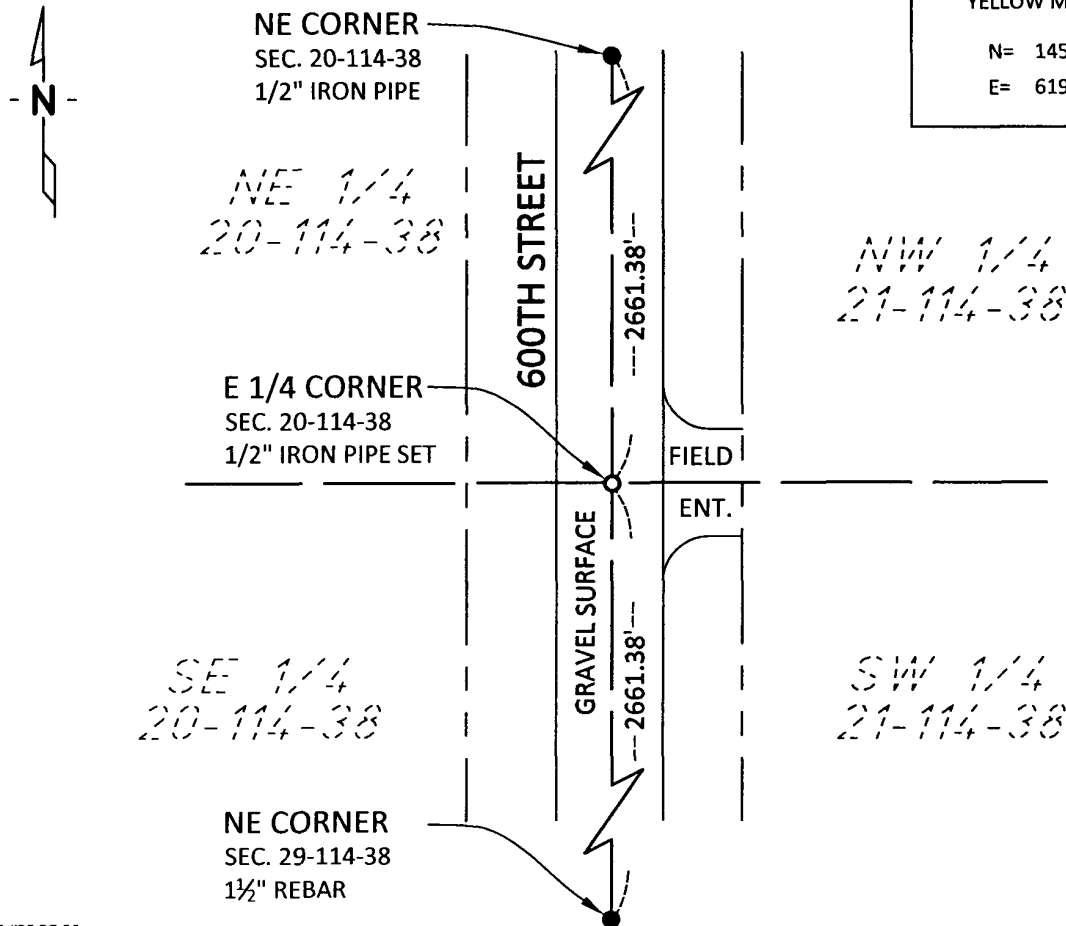
CERTIFICATE OF LOCATION OF GOVERNMENT CORNER

EAST QUARTER Corner of Section 20, Township 114 N, Range 38 W, 5th P.M.
STATE OF MINNESOTA, County of YELLOW MEDICINE

At the corner location shown on the sketch:

- On 9/15/16 found a NOTHING
DATE
- left monument as found, lowered monument, removed monument (explain)
- On 9/15/16 placed a 1/2" IRON PIPE MONUMENT
DATE

SKETCH OF REFERENCE TIES



NAD83 (2007 ADJUSTMENT)
YELLOW MEDICINE COUNTY
N= 145400.28
E= 619138.36

Statement of Evidence:

East Quarter Corner Section 20, Township 114 N, Range 38 W

- 1858 The original Public Land Survey subdividing the township was completed by Brent V. Barnes, U.S. Deputy Surveyor in 1858.
- 2016 On September 15, a Bolton & Menk Inc, Sleepy Eye, survey crew set a 1/2" iron pipe monument midway and online between the Northeast Corner of Section 20-114-38 and the Northeast Corner of Section 29-114-38. The iron pipe was set 3" below the surface of the gravel Township Road. This location seems reasonable and is accepted as the corner.

Index No.

Statement of evidence relative to this corner location is on back of page.

I hereby certify that this document and the data contained herein was prepared by me or under my direct supervision.

Jesse D. Zeig
Jesse D. Zeig

9/26/16
DATE

Registration No. 44996

Land surveyor County Surveyor

Doc# 264894 Fee: \$0.00 2 Pages

Property & Public Services
Property Records Division
Yellow Medicine County, Minnesota

I hereby certify that the within instrument was filed on September 28, 2016 at 9:40 AM

Janel Timm, Yellow Medicine County Recorder

By *Kelly Kuger* Deputy

CERTIFICATE OF LOCATION OF GOVERNMENT CORNER

NORTHEAST Corner of Section 20, Township 114 N, Range 38 W, 5th P.M.

STATE OF MINNESOTA, County of YELLOW MEDICINE

At the corner location shown on the sketch:

On 9/15/16 found a 1/2" IRON PIPE
DATE

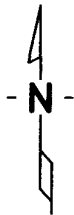
left monument as found, lowered monument, removed monument (explain)

On _____ placed a _____
DATE

SKETCH OF REFERENCE TIES

NAD83 (2007 ADJUSTMENT)
YELLOW MEDICINE COUNTY

N= 148061.53
E= 619111.54



SE 1/4
17-114-38
MAG NAIL ON NORTH END
CMP CULVERT 40.11' NW

SW 1/4
16-114-38

600TH STREET

NE CORNER
SEC. 20-114-38
1/2" IRON PIPE

190TH AVENUE

GRAVEL SURFACE

MAG NAIL IN UTILITY
POLE 52.66' SW

NE 1/4
20-114-38

NW 1/4
21-114-38

GRAVEL SURFACE

Statement of Evidence:

Northeast Corner Section 20, Township 114 N, Range 38 W

- 1858 The original Public Land Survey subdividing the township was completed by Brent V. Barnes, U.S. Deputy Surveyor in 1858.
- 2016 On September 15, a Bolton & Menk Inc, Sleepy Eye, survey crew found found a 1/2" iron pipe at the surface of the gravel Township Road. This location seems reasonable and is accepted as the corner.

CERTIFICATE OF LOCATION OF GOVERNMENT CORNER

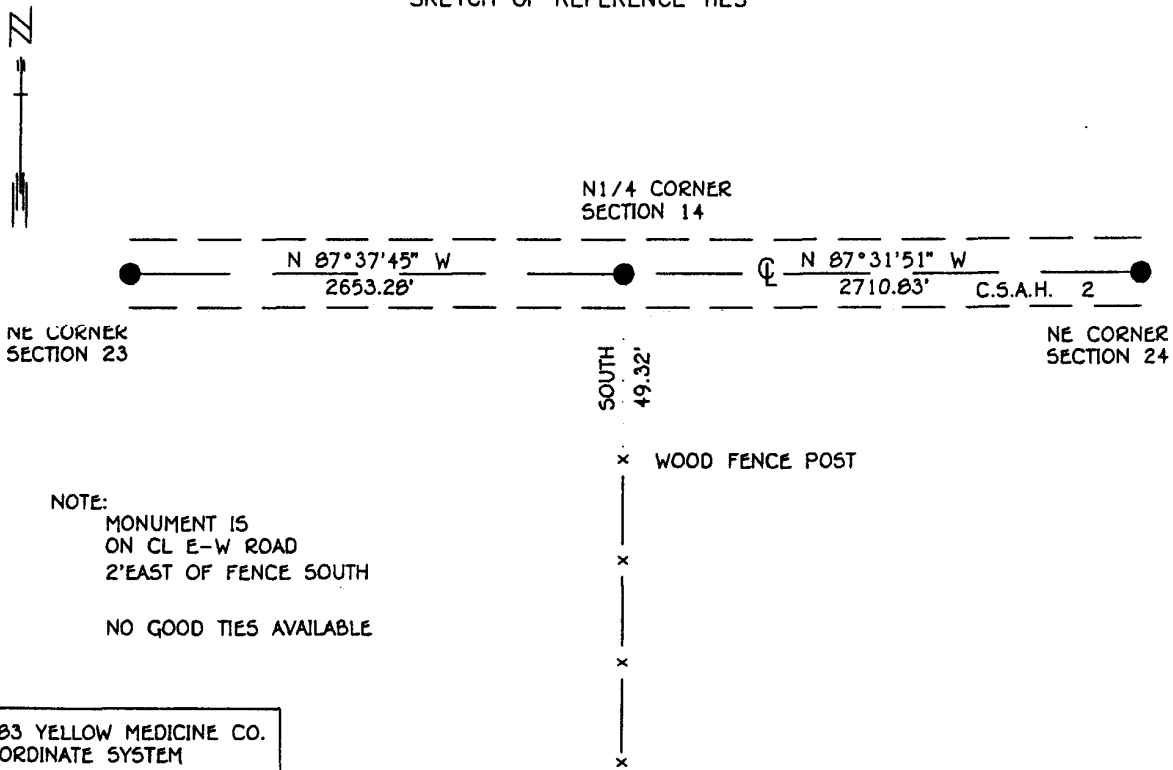
NORTH QUARTER Corner of Section 24, Township 114 N, Range 30 W, 5th P.M.

STATE OF MINNESOTA, County of YELLOW MEDICINE

At the corner location shown on the sketch:

- On _____ found a _____
DATE
- left monument as found, lowered monument, removed monument (explain)
- On 2-14-94 Placed a 3/4" x 12" REBAR WITH ALUMINUM CAP STAMPED
DATE "DNR SURVEY MARKER", FLUSH

SKETCH OF REFERENCE TIES



NOTE:
MONUMENT IS
ON CL E-W ROAD
2' EAST OF FENCE SOUTH

NO GOOD TIES AVAILABLE

1983 YELLOW MEDICINE CO.
COORDINATE SYSTEM
N = 148144.597
E = 637731.526

BEARINGS OBSERVED WITH COMPASS

Statement of evidence relative to this corner location is on back of page.

SNA01027.00.00.01
J.B.M. FEB '94

I hereby certify that this document and the data contained herein was prepared by me or under my direct supervision.

Lowell R. Pommeroy 4-22-94
SIGNATURE DATE

Registration No. 17005

- Land Surveyor, Professional Engineer
 County Surveyor, County Engineer

OFFICE OF THE COUNTY RECORDER
County of Yellow Medicine

I hereby certify that this document was filed in the Co. recorders office at 10:10 A.M. on the 22 day of June A.D., 1994

County Recorder Arnold Ojala

By _____, Deputy

DOCUMENT NO. 207003

North Quarter Corner Section 24, Township 114 North, Range 38 West

The DNR Bureau of Engineering contacted the following offices for information on this corner:

MN. Secretary of State

Yellow Medicine County Recorder and Highway Engineer

1864 The U.S. General Land Office field notes in the Secretary of State's Office describe this corner as a post in mound with pits.

1926 Surveyor's Record Book, on page 495, on file in the Yellow Medicine County Recorder's Office contains a survey by John Norgaard, County Surveyor. Survey describes this corner as a stone set by Norgaard 20 years ago. The corner measures:

2 ft east of a fence line south

27.5 ft. north of telephone line

2648 ft. from the northeast corner Section 23

2703 ft. from the northeast corner Section 24

1960 The alignment map for County State Aid Highway #2, on file in the County Highway Engineer's Office, show a 1" by 2" hub set at a assumed position for this corner. Corner is shown at the projected intersection of roads west and north and fence line south. From highway stationing this corner is shown to measure:

2676.4 ft. from the northeast corner Section 23

1993 July, the DNR Bureau of Engineering conducted a search for this corner and located the intersection of an east-west road and fence line south. Per the 1926 survey set a point for the corner 2 ft. east of the fence line and measured:

1326.64 ft. to a fence line north

2653.28 ft. from the northeast corner Section 23

2710.83 ft. from the northeast corner Section 24

Analysis of the available information led the DNR Bureau of Engineering to conclude that the point set per the 1926 survey marks the location of the corner. Construction of County State Aid Highway #2 has destroyed any evidence of a corner monument.

CERTIFICATE OF LOCATION OF GOVERNMENT CORNER

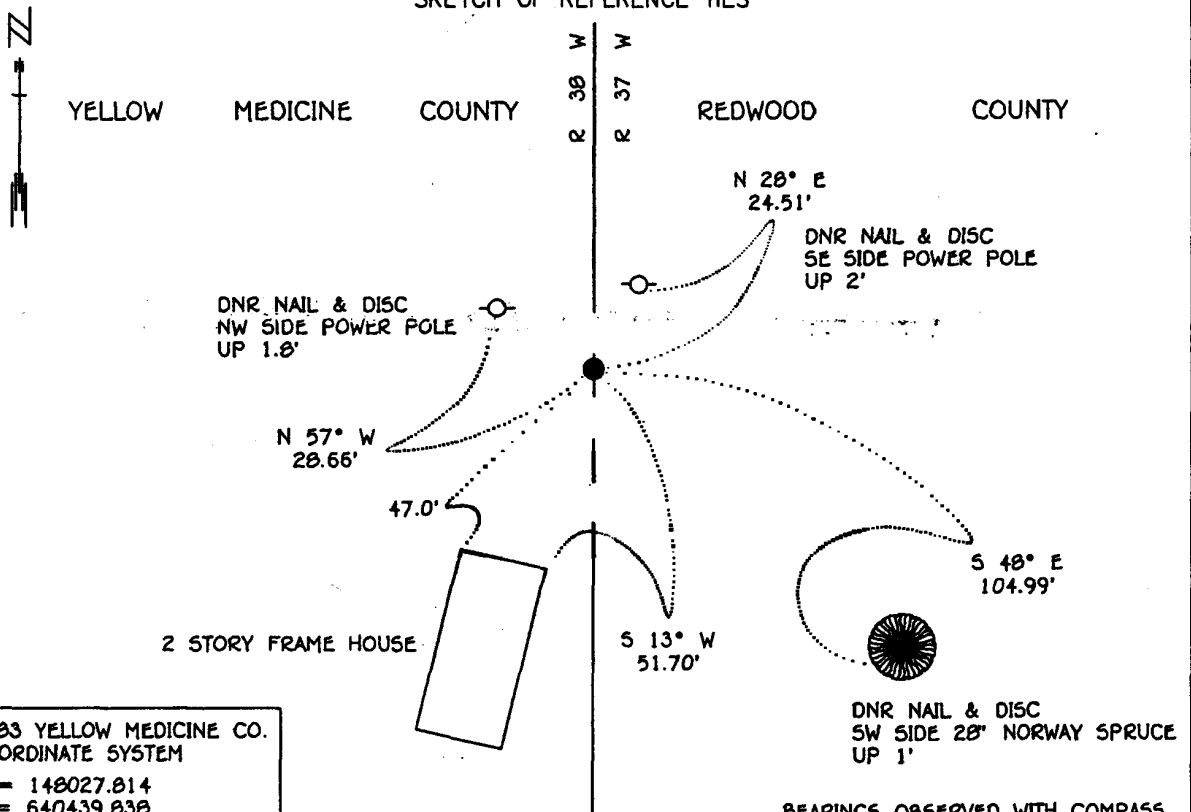
NORTHEAST Corner of Section 24, Township 114 N, Range 38 W, 5th P.M.

STATE OF MINNESOTA, County of YELLOW MEDICINE

At the corner location shown on the sketch:

- On _____ found a _____
DATE _____
- left monument as found, lowered monument, removed monument (explain)
- On 1-25-94 Placed a 3/4" x 24" REBAR WITH ALUMINUM CAP STAMPED
DATE "DNR SURVEY MARKER", DOWN 0.20'

SKETCH OF REFERENCE TIES



1983 YELLOW MEDICINE CO.
COORDINATE SYSTEM
N = 148027.814
E = 640439.838

Statement of evidence relative to this corner location is on back of page.

SNA01027.00.00.01
J.B.M. FEB '94

I hereby certify that this document and the data contained herein was prepared by me or under my direct supervision.

Lowell R. Ponceaux 4-22-94
SIGNATURE DATE

Registration No. 17005

- Land Surveyor; Professional Engineer
- County Surveyor, County Engineer

OFFICE OF THE COUNTY RECORDER
County of Yellow Medicine

I hereby certify that this document was filed in the Co. recorders office at 10:05 A.M. on the 22 day of June A.D., 1994

County Recorder Norward Oudell
By _____, Deputy

DOCUMENT NO. 207002

Northeast Corner Section 24, Township 114 North, Range 38 West

The DNR Bureau of Engineering contacted the following offices for information on this corner:

MN. Secretary of State

Yellow Medicine County Recorder and Highway Engineer

Redwood County Recorder and Highway Engineer

1857 The U.S. General Land Office field notes in the Secretary of State's Office describe this corner as a set post, built mound of earth and dug trench per instructions.

1901 Surveyor's Record Book B, on page 135, on file in the Yellow Medicine County Recorder's Office, contains a collection of what was found at government section corners by John Norgaard, County Surveyor, in a re-monumentation survey. Norgaard states: "Found stake located by me 5 years ago on line and at equal proportional distance between the East 1/4 post Section 13 and the Southeast corner Section 24. Set top of monument level with ground." Set a 6" by 6" by 24" jasper granite stone at this location. A plat of this survey shows this corner measures:

2654 ft. from the east quarter corner Section 13

5308 ft. from the southeast corner Section 24

1926 Surveyor's Record Book, on page 495, on file in the Yellow Medicine County Recorder's Office contains a survey by John Norgaard, County Surveyor. Survey does not describe this corner, but it is shown to measure:

SE corner house 51.7 ft, NW corner house 47.0 ft.

2652 ft. from the east quarter corner Section 13

2703 ft. from the north quarter corner Section 24

1993 July, the DNR Bureau of Engineering conducted a search for this corner, but found no evidence of a monument. Located a two story frame house near the corner area, which according to the residents, is fairly old. Used the ties from the 1926 survey to search for a monument, but did not find anything. Set a point for the corner based on the 1926 ties of record, however this position did not agree with Norgaard's distances to adjoining government corners. On an assumption that the distance from the southeast corner was supposed to be from the northeast corner, a point for the corner was set at this position, (using the northwest and northeast corners of the house.) this position yielded distances of:

5306.05 ft. from the southeast corner Section 24

2710.83 ft. from the north quarter corner Section 24

2675.51 ft. from the east quarter corner Section 13

Analysis of the available information led the DNR Bureau of Engineering to conclude that the position established from the 1926 tie distances from the northwest and northeast corners of the house marks the location of the corner. This position is at a best fit location of Norgaard's distances to adjoining corners.

CERTIFICATE OF LOCATION OF GOVERNMENT CORNER

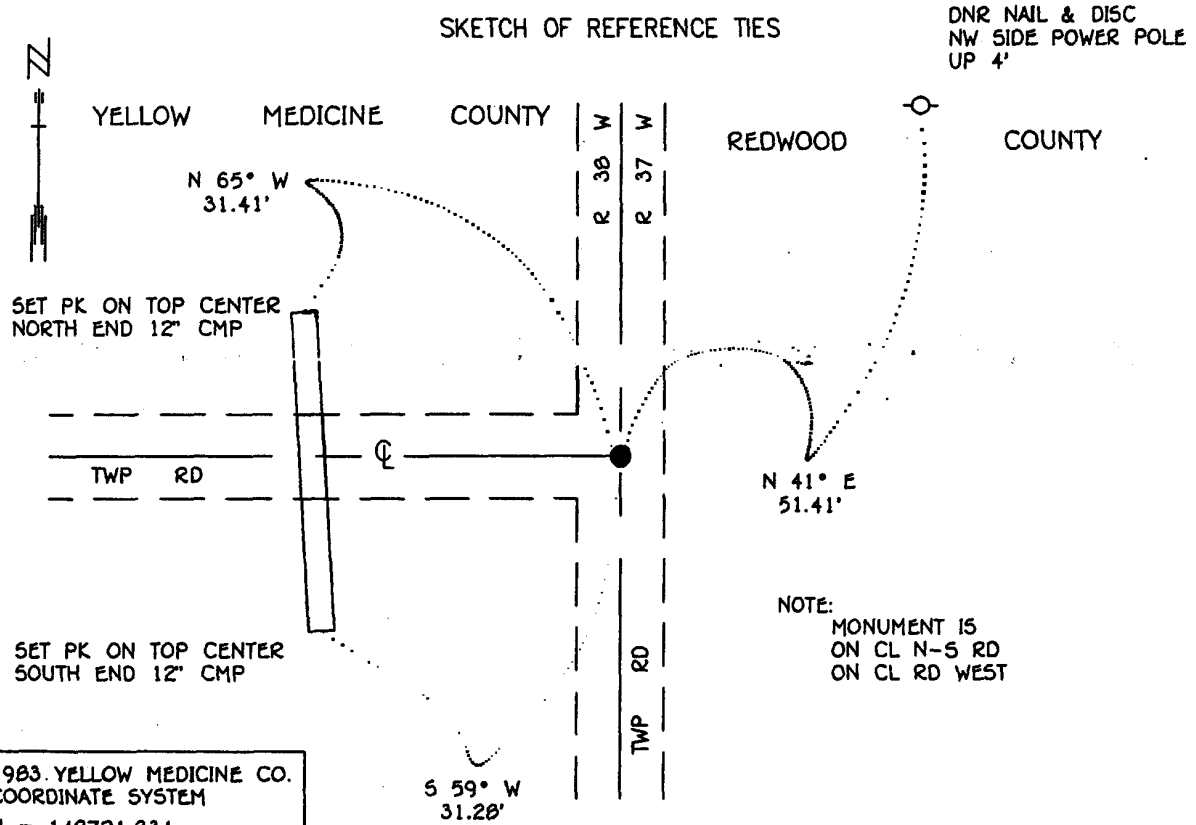
NORTHEAST Corner of Section 25, Township 114 N, Range 30 W, 5th P.M.

STATE OF MINNESOTA, County of YELLOW MEDICINE

At the corner location shown on the sketch:

- On 7-19-93 found a IRREGULAR 6" x 8" x 1.5" STONE, DOWN 1.5"
DATE
- left monument as found, lowered monument, removed monument (explain)
- On 7-19-93 Placed a 3/4" x 6" IRON ROD OVER STONE, DOWN 0.3'
DATE

SKETCH OF REFERENCE TIES



1983. YELLOW MEDICINE CO.
COORDINATE SYSTEM
N = 142721.834
E = 640413.243

NOTE:
MONUMENT IS
ON CL N-5 RD
ON CL RD WEST

BEARINGS OBSERVED WITH COMPASS

Statement of evidence relative to this corner location is on back of page.

SNA01027.00.00.01
J.B.M. FEB '94

I hereby certify that this document and the data contained herein was prepared by me or under my direct supervision.

Lowell R. Pomeroy SIGNATURE 4-22-94 DATE

Registration No. 17005

- Land Surveyor, Professional Engineer
- County Surveyor, County Engineer

OFFICE OF THE COUNTY RECORDER
County of Yellow Medicine

I hereby certify that this document was filed in the Co. recorders office at 10:15 A.M. on the 22 day of June A.D., 1994

County Recorder Norman Spedare

By _____, Deputy

DOCUMENT NO. 207004

Northeast Corner Section 25, Township 114 North, Range 38 West

The DNR Bureau of Engineering contacted the following offices for information on this corner:

MN. Secretary of State

Redwood County Recorder and Highway Engineer

Yellow Medicine County Recorder and Highway Engineer

1857 The U.S. General Land Office field notes in the Secretary of State's Office describe this corner as a post in mound with pits.

1901 Surveyor's Record Book B, on page 135, on file in the Yellow Medicine County Recorder' Office, contains a collection of what was found at government section corners by John Norgaard, County Surveyor, in a re-monumentation survey. Norgaard states: "Found stone set by me 5 years ago in the government mound. Set top of monument level with ground." Set a 6" by 6" by 24" jasper granite stone at this location. A plat of this survey shows this corner measures:

5306 ft. from the northeast corner Section 26

5308 ft. from the northeast corner Section 24

1993 July 19, the DNR Bureau of Engineering conducted a search for this corner and found a 6" by 8" by 18" stone, down 1.5 ft. Removed and probed under said stone in all directions, but found nothing further. Reset stone in same location now down 1.0 Ft. Stone was found to measure:

5306.05 ft. from the northeast corner Section 24

5325.40 ft. from the northeast corner Section 26

at the intersection of roads north-south and east

Analysis of the available information led the DNR Bureau of Engineering to conclude that the found stone marks the location of the corner.

CERTIFICATE OF LOCATION OF GOVERNMENT CORNER

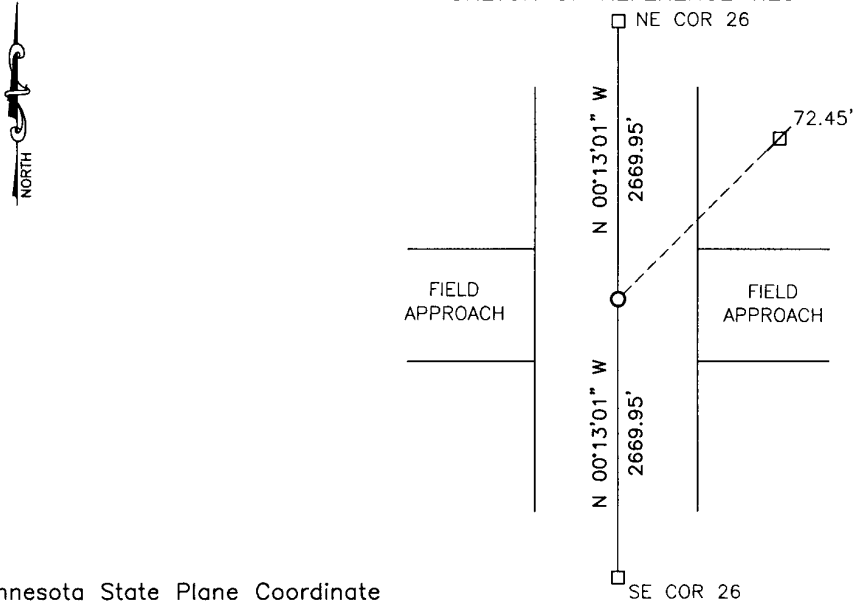
EAST QUARTER Corner of Section 26, Township 114, Range 38, 5TH P.M.

STATE OF MINNESOTA, County of YELLOW MEDICINE

At the corner location shown on the sketch:

- On _____ found a _____
DATE
- left monument as found, lowered monument, removed monument (explain)
- On 2/22/17 placed a 5/8" iron with seal #43844
DATE

SKETCH OF REFERENCE TIES



Minnesota State Plane Coordinate
System Yellow Medicine County Datum
NAD83 (1996)

N: 140160.899
E: 635107.542

Nail and bottle cap in utility pole NE 72.45'

Statement of evidence relative to this corner location is on back of page.

I hereby certify that this document and the data contained herein was prepared by me or under my direct supervision.

[Signature] 3/1/17
SIGNATURE DATE

Registration No. 43844

- Land Surveyor, Professional Engineer
- County Surveyor, County Engineer

OFFICE OF THE COUNTY RECORDER
County of _____

I hereby certify that this document was filed in the Co. Recorders office at _____ .M on the _____ day of _____ A.D. 20 _____

County Recorder _____

By _____, Deputy

DOCUMENT NO. _____

Statement of Evidence

In 1864, Chas E. Davis and J.W. Webb Jr. did the original subdivision of the township.

In 1919, John Norgaard, County Surveyor, established the corner to be midway and on line. He did not note he set anything at the corner.

On February 22, 2017, Bueltel-Moseng Land Surveying set a 5/8" iron with seal #43844 midway and on line between the section corners.

Doc# 266110 Fee: \$0.00 2 Pages

Property & Public Services

Property Records Division

Yellow Medicine County, Minnesota

I hereby certify that the within instrument
was filed on April 17, 2017 at 10:25 AM

Janel Timm, Yellow Medicine County Recorder

By Kelly Kauger Deputy

CERTIFICATE OF LOCATION OF GOVERNMENT CORNER

NORTHEAST Corner of Section 26, Township 114 N, Range 38 W, 5th P.M.

STATE OF MINNESOTA, County of YELLOW MEDICINE

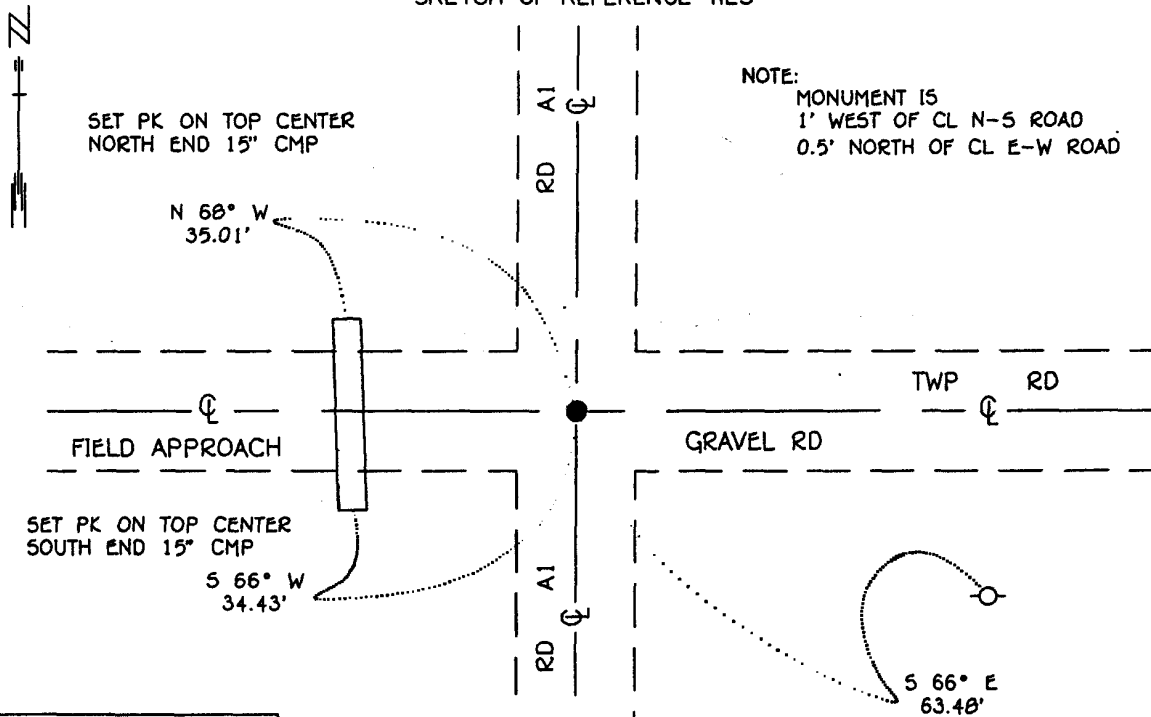
At the corner location shown on the sketch:

On 7-21-93 found a 6" x 6" CUT STONE, DOWN 1.4'
DATE

left monument as found, lowered monument, removed monument (explain)

On 7-21-93 Placed a 3/4" x 12" IRON ROD WITH ALUMINUM CAP STAMPED
DATE "DNR SURVEY MARKER", OVER STONE, DOWN 0.3'

SKETCH OF REFERENCE TIES



1983 YELLOW MEDICINE CO.
COORDINATE SYSTEM
N = 142831.223
E = 635088.967

DNR NAIL & DISC
5W SIDE POWER POLE
UP 3'

BEARINGS OBSERVED WITH COMPASS

Statement of evidence relative to this corner location is on back of page.

SNA01027.00.00.01
J.B.M. FEB '94

I hereby certify that this document and the data contained herein was prepared by me or under my direct supervision

Lowell B. Pommeroy 4-22-94
SIGNATURE DATE

Registration No. 17005

- Land Surveyor, Professional Engineer
- County Surveyor, County Engineer

OFFICE OF THE COUNTY RECORDER
County of Yellow Medicine

I hereby certify that this document was filed in the Co. recorders office at 10:20 A.M. on the 22 day of June A.D., 1994

County Recorder Normand Goddard

By _____, Deputy

DOCUMENT NO. 207005

Northeast Corner Section 26, Township 114 North, Range 38 West

**The DNR Bureau of Engineering contacted the following offices for information on this corner:
MN. Secretary of State
Yellow Medicine County Recorder and Highway Engineer**

- 1864 The U.S. General Land Office field notes in the Secretary of State's Office describe this corner as a post in mound with pits.**
- 1901 Surveyor's Record Book B, on page 141, on file in the Yellow Medicine County Recorder' Office, contains a collection of what was found at government section corners by John Norgaard, County Surveyor, in a re-monumentation survey. Norgaard states: "Found stone at the intersection of road as used by me 5 years ago in the subdivision of adjoining sections. Set top of monument level with ground." Set a 6" by 6" by 24" jasper granite stone at this location. A plat of this survey shows this corner measures:
5306 ft. from the northeast corner Section 25
5338 ft. from the northeast corner Section 23**
- 1993 July 21, the DNR Bureau of Engineering conducted a search for this corner at the intersection of roads north-south and east-west. Found a nail down 0.2 ft. over a 6" carriage bolt, down 0.8 ft. Both were over a 6" by 6" cut granite stone down 1.4 ft. Set a DNR Survey Marker over the stone which was found to measure:
5325.40 ft. from the northeast corner Section 25
5330.55 ft. from the northeast corner Section 23**

Analysis of the available information led the DNR Bureau of Engineering to conclude that the found stone marks the location of the corner.

CERTIFICATE OF LOCATION OF GOVERNMENT CORNER

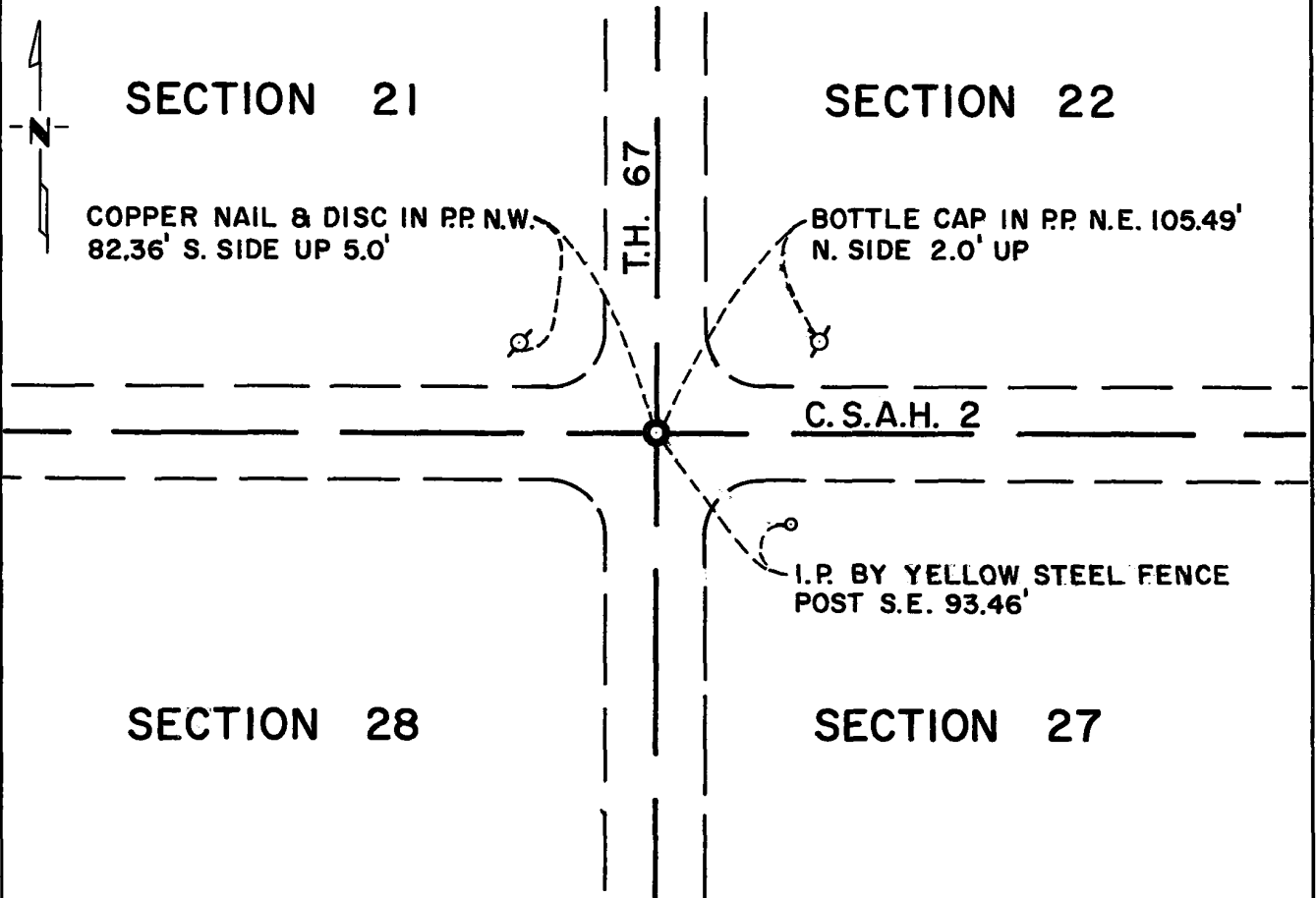
Northeast Corner of Section 28, Township 114N, Range 38W, 5th P.M.

STATE OF MINNESOTA, County of Yellow Medicine

At the corner location shown on the sketch:

- On May 6, 1975 found a 6"x6"x24" Jasper stone on centerline of north-south
DATE
T.H. 67 and east-west road. Down 2.5'
 left monument as found, lowered monument, removed monument (explain)
- On Dec. 5, 1975 placed a Minnesota Highway Department cast iron monument
DATE
down 1 inch below road surface.

SKETCH OF REFERENCE TIES



Statement of evidence relative to this corner location is on back of page.

I hereby certify that this document and the data contained herein was prepared by me or under my direct supervision.

Richard M. Kofayndi 3/9/76
SIGNATURE DATE

Registration No. 11526

- Land Surveyor, Professional Engineer
- County Surveyor, County Engineer

OFFICE OF THE REGISTER OF DEEDS
County of Yellow Medicine

RECORDED
GRANTOR
GRANTEE
INDEXED

I hereby certify that this document was filed in the Reg. of Deeds office at 9:10 A.M. on the 18 day of March A.D., 1976

Register of Deeds Norman J. Opdahl

By Kay Nerdahl, Deputy

DOCUMENT NO. 166657

Statement of Evidence: Northeast Corner of Section 28, Township 114N, Range 38W.

The original Public Land Survey was run in 1864 and a post set in a mound with pits to mark the corner.

In 1891, Jonah Peterman found the original government corner but did not indicate the type of monument found.

In 1901, John Norgaard found a stone and placed a jasper monument to mark the corner.

In 1911, John Norgaard again found the corner.

In 1941, the MHD found a stone monument in place.

On May 6, 1975, the Minnesota Highway Department found a 6"x6"x24" jasper monument.

The origin of the stone could not be determined.

An analysis of the record data indicates that the jasper monument is in the accepted location of the Public Land Survey corner.

Index No.

Statement of evidence relative to this corner location is on back of page.

I hereby certify that this document and the data contained herein was prepared by me or under my direct supervision.

Jesse D. Zeig
Jesse D. Zeig

9/26/16
DATE

Registration No. 44996

Land surveyor County Surveyor

Doc# 264896 Fee: \$0.00 2 Pages

Property & Public Services
Property Records Division
Yellow Medicine County, Minnesota
I hereby certify that the within instrument was filed on September 28, 2016 at 9:50 AM

Janel Timm, Yellow Medicine County Recorder

By Kelly Kauger Deputy

CERTIFICATE OF LOCATION OF GOVERNMENT CORNER

NORTHEAST Corner of Section 29, Township 114 N, Range 38 W, 5th P.M.

STATE OF MINNESOTA, County of YELLOW MEDICINE

At the corner location shown on the sketch:

On 9/15/16 found a 1 1/2" REBAR
DATE

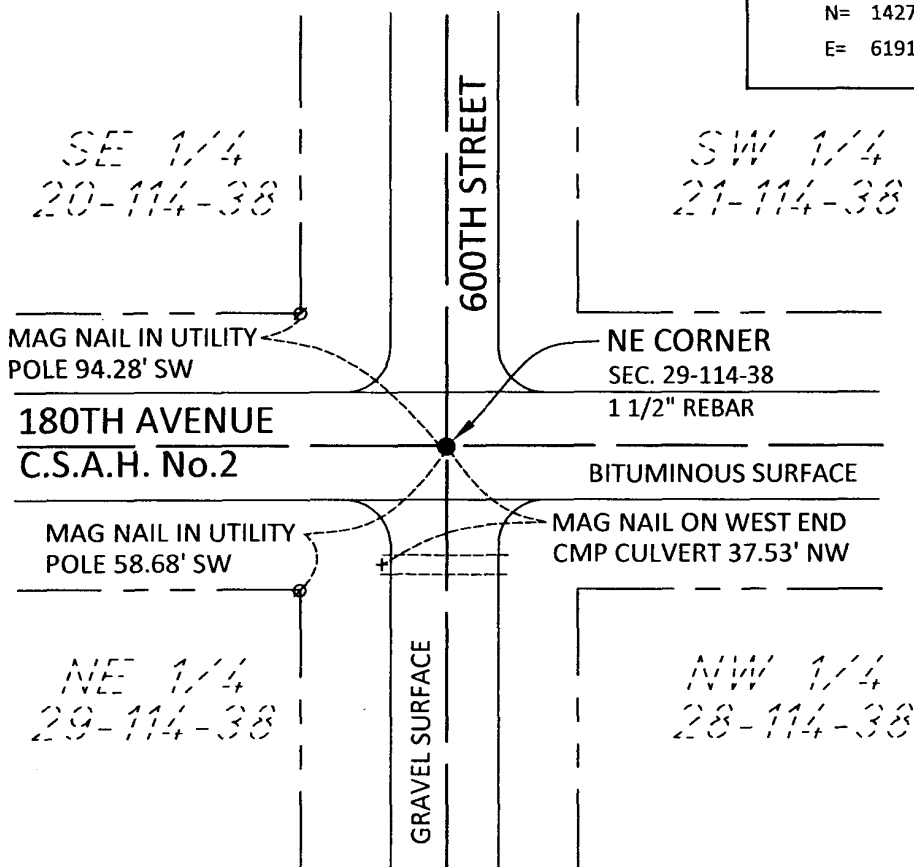
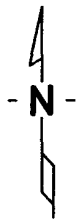
left monument as found, lowered monument, removed monument (explain)

On _____ placed a _____
DATE

SKETCH OF REFERENCE TIES

NAD83 (2007 ADJUSTMENT)
YELLOW MEDICINE COUNTY

N= 142739.04
E= 619165.18



Statement of Evidence:

Northeast Corner Section 29, Township 114 N, Range 38 W

- 1858 The original Public Land Survey subdividing the township was completed by Brent V. Barnes, U.S. Deputy Surveyor in 1858.
- 2016 On September 15, a Bolton & Menk Inc, Sleepy Eye, survey crew found found a 1 1/2" Rebar iron at the surface of the bituminous county road. This location seems reasonable and is accepted as the corner.

73
Book
32

Index No. _____

CERTIFICATE OF LOCATION OF GOVERNMENT CORNER

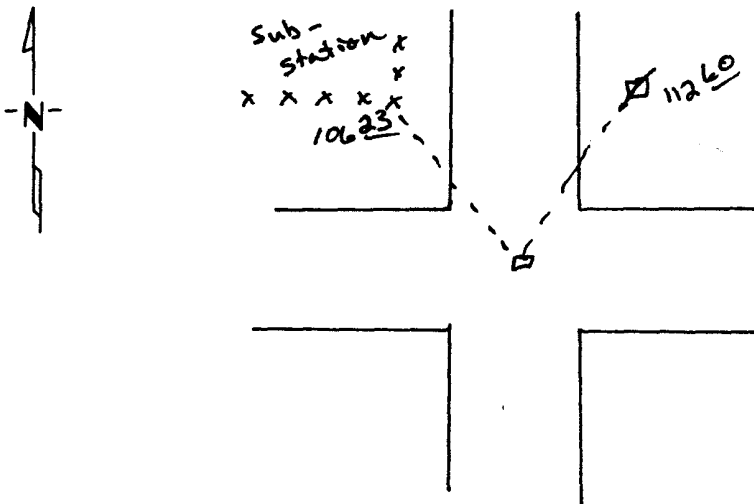
Northeast Corner of Section 31, Township 114, Range 38, 5th P.M.

STATE OF MINNESOTA, County of Yellow Medicine

At the corner location shown on the sketch:

- On _____ found a _____
DATE
- left monument as found, lowered monument, removed monument (explain)
- On Apr. 14, 1993 placed a iron pipe w/seal #11943 (see back)
DATE

SKETCH OF REFERENCE TIES



Corner fence post of substation NW 106.23'
Nail & seal in power pole NNE 112.60'

Statement of evidence relative to this corner location is on back of page.

I hereby certify that this document and the data contained herein was prepared by me or under my direct supervision.

Del. E. Moser 4-10-95
SIGNATURE DATE

Registration No. 11943
 Land Surveyor, Professional Engineer
 County Surveyor, County Engineer

OFFICE OF THE COUNTY RECORDER
County of Yellow Medicine

I hereby certify that this document was filed in the Co. Recorders office at 9:50 A.M. on the 30 day of June A.D., 19 95

County Recorder Norman J. Spalding

By _____, Deputy

DOCUMENT NO. 209405

Statement of Evidence:

On April 14, 1993, we dug with back hoe and found evidence that someone else had dug earlier for the corner(i.e. pop cans, cigarette butts, etc.), but no stone or stake was found. We did find a R.R. spike at the surface in the center of the intersection. We replaced the R.R. spike with a iron pipe w/seal #11943 and the location fit the existing occupation lines.

73
Book
37

Index No. _____

CERTIFICATE OF LOCATION OF GOVERNMENT CORNER

East Quarter Corner of Section 31, Township 114, Range 38, 5th P.M.

STATE OF MINNESOTA, County of Yellow Medicine

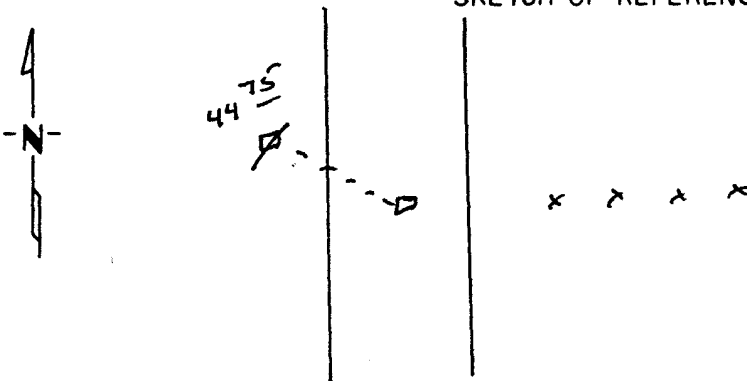
At the corner location shown on the sketch:

On _____ found a _____
DATE

left monument as found, lowered monument, removed monument (explain)

On Apr. 28, 1993 placed a 5/8" iron stake w/seal #11943 (see back)
DATE

SKETCH OF REFERENCE TIES



Nail & seal in power pole NW 44.75'

Statement of evidence relative to this corner location is on back of page.

I hereby certify that this document and the data contained herein was prepared by me or under my direct supervision.

Lytle C. Mason 4-10-95
SIGNATURE DATE

Registration No. 11943
 Land Surveyor, Professional Engineer
 County Surveyor, County Engineer

OFFICE OF THE COUNTY RECORDER
County of Yellow Medicine

I hereby certify that this document was filed in the Co. Recorders office at 9:45 A.M. on the 30 day of June A.D., 19 95

County Recorder Harold Christensen
By _____, Deputy

DOCUMENT NO. 209404

Statement of Evidence:

On April 14, 1993, we dug with a back hoe in line with fence to the east and in center line of road and found nothing. I set the corner midway and on line and it lines up good with the east.

CERTIFICATE OF LOCATION OF GOVERNMENT CORNER

Corner to Section 31 Township 114 N Range 38 W

No. _____

STATE OF MINNESOTA,

County of Yellow Medicine S.S.

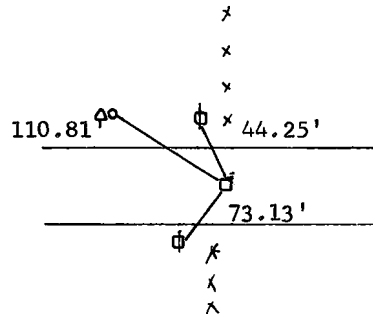
I hereby certify that on the 3rd day of March 1980,
that I, Lyle E. Moseng, a Registered Land Surveyor, ~~County Surveyor,~~
~~County Highway Engineer,~~ ^{SET} found the North Quarter corner of Section 31
~~which was evidenced by~~ SEE BACK

_____ and I further certify that to perpetuate the
location of such corner I did, at the exact location thereof, place a permanent
marker consisting of 5/8" rerod with seal.

I further certify that I established 3 references or witness monuments consist-
ing of two power poles & a brace pole for which reference or witness monuments are
buried telephone cable pedestal
located in the manner following.

Dh nail & bc in PP N 44.25 ft
Dh nail & bc in PP SW 73.13 ft
Dh nail & bc in brace
pole for tele pedestal NW 110.81 ft

In line with fence line to the north



Dated at Marshall, Minnesota, this 29th day of May, 1980.

Lyle E. Moseng
~~County Surveyor, County Highway Engineer,~~
Registered Land Surveyor No. 11943

183004
OFFICE OF THE REGISTER OF DEEDS

County of Yellow Medicine

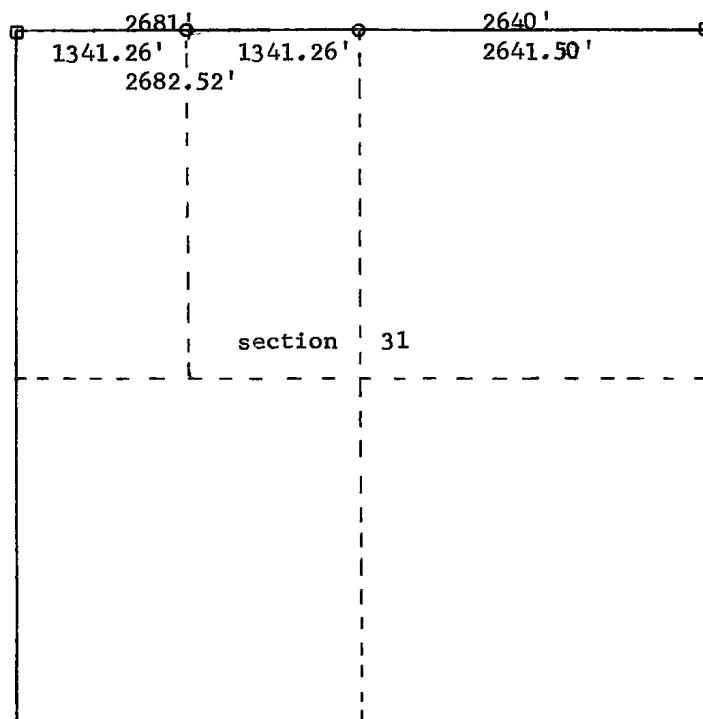
I hereby certify that the within instrument was filed in this office for
record on the 16 day of November A.D., 1983, at 2:10 o'clock P.M.

Norman J. Opdahl, County Recorder
Register of Deeds

by Kay Nordahl Deputy

We set the corner on line between the section corners and 2641.50 feet west of the northeast corner of section 31; with the information on pages 431 & 433 in surveyor's record book in the Yellow Medicine Co. Register of Deeds Office. see below.

$\frac{2640}{5321} = \frac{2641.4971}{5324.0174}$



CERTIFICATE OF LOCATION OF GOVERNMENT CORNER

NE Corner of Section 32, Township 114N, Range 38W, 5TH P.M.

STATE OF MINNESOTA, County of YELLOW MEDICINE

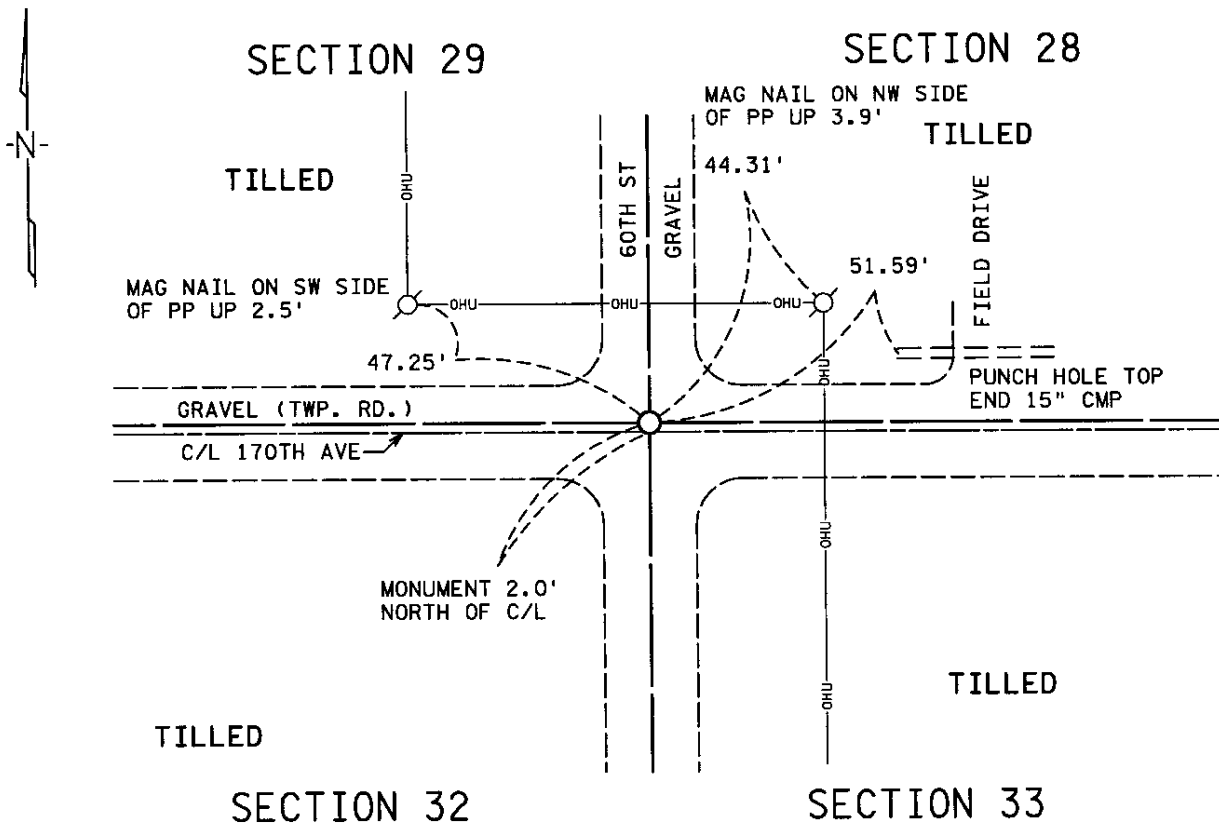
At the corner location shown on the sketch :

On 07-21-06 found 6" x 6" CUT STONE MONUMENT DOWN 1.9'

left monument as found, lowered monument, removed monument (explain)

On 07-26-06 placed 3/4" IRON PIPE WITH YELLOW CAP #22422
DOWN 0.5'

Sketch of reference ties



Statement of evidence relative to this corner location is on back page

I hereby certify that this document and the data contained herein was prepared by me and under my direct supervision.

Douglas D. Rude 8-2-06
Signature Date

Registration No. 22422

Land surveyor, Professional Engineer

County Surveyor, County Engineer

OFFICE OF THE COUNTY RECORDER

County of _____

I hereby certify that this document was filed in the Co. Recorder office at _____ M on the _____ day of _____ A.D., 20

County Recorder _____

By _____, Deputy

DOCUMENT NO. _____

Office of County Recorder
Yellow Medicine County, Minnesota
I hereby certify that the within instrument
was filed on September 14, 2006 at 10:00 AM
Kay Zempel, Yellow Medicine County Recorder

*NC Yaggy Colby Assoc. Inc. 1270 Northland Dr.
Suite 150, Mendota Heights MN 55120*

Statement of Evidence

BY *Neidi O Bakkelund* Deputy

NORTHEAST CORNER OF SECTION 32, TOWNSHIP 114 NORTH, RANGE 38 WEST,
5TH P.M.

October 1864:

Chase Davis & J.W. Webb Jr., Deputy Surveyors, set a post in mound with pits for the corner during the Original Public Land Survey.

May 07, 1891:

Jonah Pederman, County Surveyor, performed a survey of Section 33 and indicates measured distances of 79.84 chains (5269.4 feet) along the west line, and 80 chains along the north line. He states he found the "government corner" at the northwest and northeast corners of Section 33, however he did not indicate the type of monument found. Refer to survey of record, page 45.

1901:

John Norgaard, County Surveyor, set a jasper stone monument at the corner.

September, 1911:

John Norgaard, County Surveyor, found jasper stone monuments in place at the 4 section corners of adjacent Section 28. Norgaard reported a distance of 5276 feet along the south line of section 28. Refer to survey of record page 249.

July 17, 1926:

John Norgaard, County Surveyor, reports a distance along the south line of Section 29 as 5310 feet and includes ties to the corner, but does not describe the type of monument. Refer to survey of record page 503.

May, 2006:

Isaiah Reicks, Yaggy Colby Associates, found an uncapped ½" rebar in the gravel road. No record was found regarding the origin of the ½" rebar. Reicks measured easterly 5278.1 feet along the south line of Section 28 to a certified cast iron monument. This agrees within 2.0 feet of Pederman's 1891 survey. He also measured westerly 5311.9 feet along the south line of Section 29 to a certified 1 inch iron pipe. This agrees within 2.0 feet of Norgaard's 1926 survey. He also measured southerly 5265.4 feet to a found spike. This agrees within 4.0 feet of Pederman's 1891 survey.

July 21, 2006:

Mark Haselius, Yaggy Colby Associates, dug with a backhoe in the vicinity of the found ½" rebar. The old gravel roadbed was discovered at a depth of 1.9 feet. At this depth, the top of a 6" by 6" jasper stone post was found along with a rotten wood lath on the north side of the stone. The found stone post is directly below the ½" rebar. Additional digging with a shovel to a depth of 3.0 feet revealed the smooth sides of the stone post. An analysis of the record and survey data indicates that the stone post is likely the same one that Norgaard set in 1901 and later referred to in his 1911 survey. The stone post is accepted as a perpetuation of the original Public Land Survey. For more information regarding this survey, please contact Yaggy Colby Associates, Rochester, MN.

July 26, 2006

Isaiah Reicks, Yaggy Colby Associates, set a ¾ inch iron pipe with yellow cap at the surface, directly above the stone post to mark the Section Corner.

CERTIFICATE OF LOCATION OF GOVERNMENT CORNER

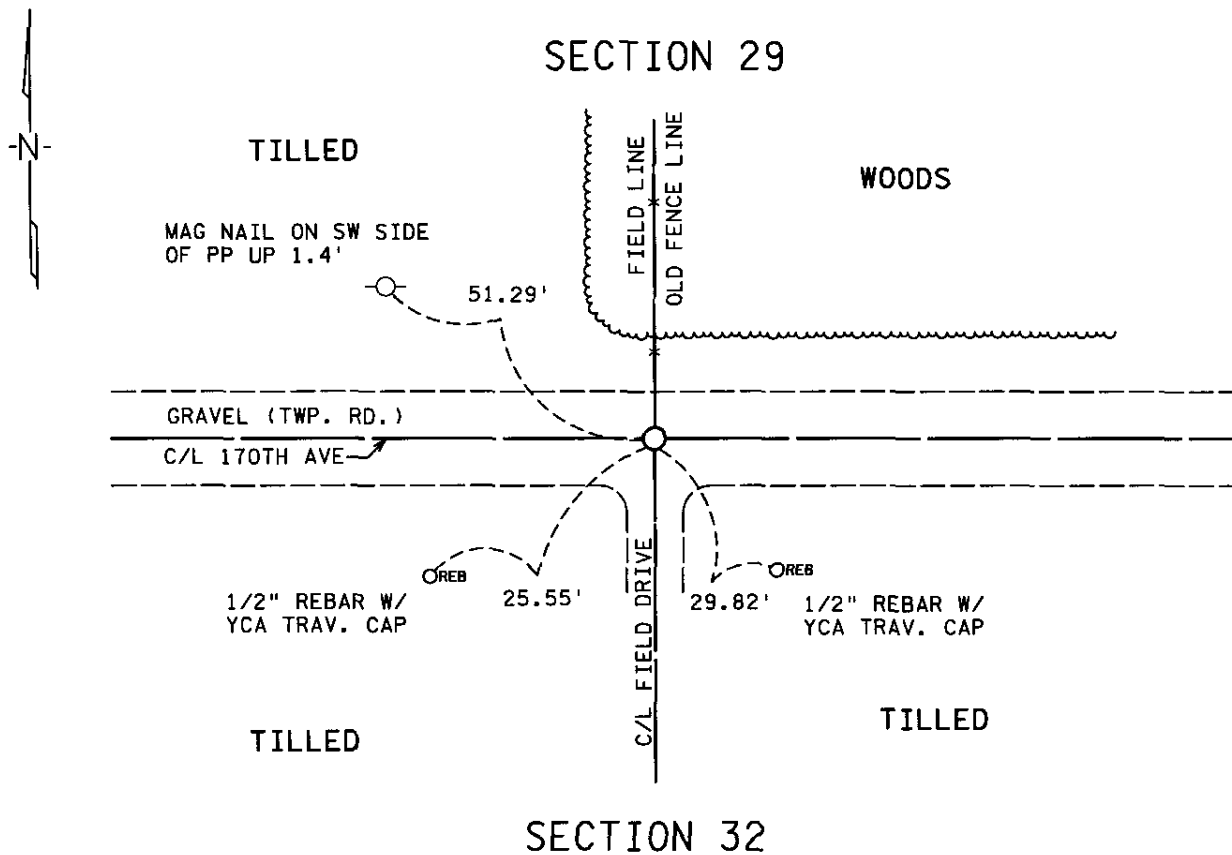
N 1/4 Corner of Section 32, Township 114N, Range 38W, 5TH P.M.

STATE OF MINNESOTA, County of YELLOW MEDICINE

At the corner location shown on the sketch :

- On 07-21-06 found NOTHING
- left monument as found, lowered monument, removed monument (explain)
- On 07-26-06 placed 3/4" IRON PIPE WITH YELLOW CAP #22422
DOWN 0.5'

Sketch of reference ties



Statement of evidence relative to this corner location is on back page

I hereby certify that this document and the data contained herein was prepared by me and under my direct supervision.

Douglas J. Rude 8-2-06
Signature Date

Registration No. 22422

- Land surveyor, Professional Engineer
- County Surveyor, County Engineer

OFFICE OF THE COUNTY RECORDER

County of _____

I hereby certify that this document was filed in the Co. Recorder office at _____ M on the _____ day of _____ A.D., 20

County Recorder _____

By _____, Deputy

DOCUMENT NO. _____

NC Yaggy Colby Assoc. Inc.
1270 Northland Dr. Suite 150
Mendota Heights, MN 55120

Doc# 241404 Fee: \$.00 2 Pages

Office of County Recorder
Yellow Medicine County, Minnesota
I hereby certify that the within instrument
was filed on September 14, 2006 at 09:55 AM

Statement of Evidence

Kay Zempel, Yellow Medicine County Recorder

BY Neidi Bakkelund Deputy

NORTH QUARTER CORNER OF SECTION 32, TOWNSHIP 114 NORTH,
RANGE 38 WEST, 5TH P.M

October 1864:

Chase Davis & J.W. Webb Jr., Deputy Surveyors, set a post in mound with pits for the corner during the Original Public Land Survey.

July 17, 1926:

John Norgaard, County Surveyor, indicated ties to the Northwest and Northeast Corners of Section 32, and reports equal distances of 2655 along the north line, but does not indicate any monument at the Quarter Corner.

May 2006:

Isaiah Reicks, Yaggy Colby Associates, searched with a metal detector in the vicinity of the North Quarter corner and found nothing. Fence lines were located for 1 mile north. Field lines and found pipes were located for 1 mile south. These occupation lines projected within 0.8 feet of each other at a position 18 feet east of midway and online between the Northwest and Northeast Corners of Section 32.

June 21, 2006:

Mark Haselius, Yaggy Colby Associates, dug with a backhoe in the gravel road at a point midway and on line as described above. Excavated a rectangular area 3 feet north-south by 8 feet east-west to a depth of 2.8 feet which is below natural ground, and found nothing. Also dug with a backhoe at a point in the center line of the road in line with an old fence line running north. Excavated a rectangular area 5 feet north-south and 9 feet east-west to a depth of 2.7 feet, which is below natural ground and found nothing.

June 26, 2006:

Isaiah Reicks, Yaggy Colby Associates, set a 3/4" iron pipe with yellow cap in the center line of the gravel road at intersection of fence line running north. An analysis of record and survey data indicates that the existing occupation lines are the best evidence available to re-establish the obliterated corner, and the set iron pipe is accepted as a perpetuation of the Public Land Survey. For more information regarding this survey, contact Yaggy Colby Associates, Rochester, MN.

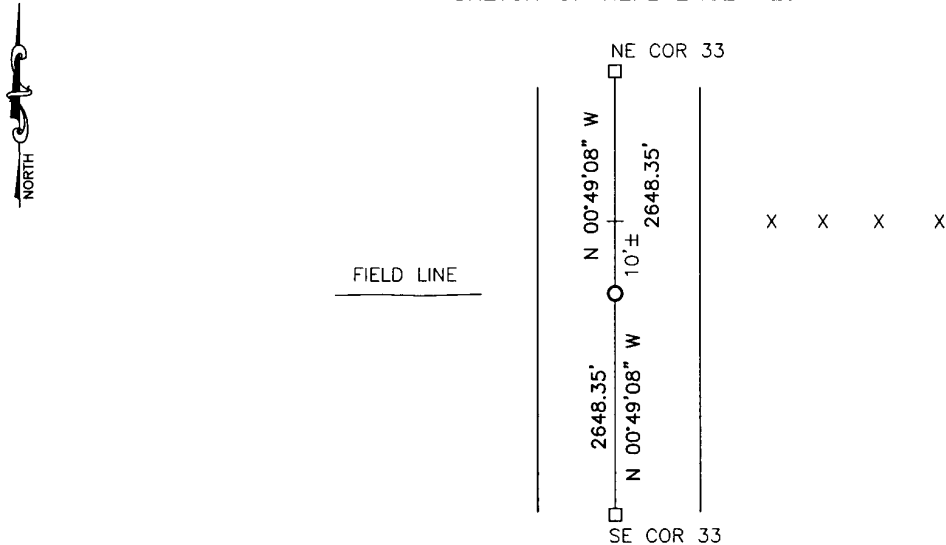
CERTIFICATE OF LOCATION OF GOVERNMENT CORNER

EAST QUARTER Corner of Section 33, Township 114, Range 38, 5TH P.M.
 STATE OF MINNESOTA, County of YELLOW MEDICINE

At the corner location shown on the sketch:

- On _____ found a _____
DATE
- left monument as found, lowered monument, removed monument (explain)
- On 4/29/15 placed a survey spike with seal #43844
DATE

SKETCH OF REFERENCE TIES



Minnesota State Plane Coordinate
 System Yellow Medicine County Datum
 NAD83 (1996)
 N: 134791.373
 E: 624520.174

NO TIES

Statement of evidence relative to this corner location is on back of page.

I hereby certify that this document and the data contained herein was prepared by me or under my direct supervision.

David Bush 3/2/16
SIGNATURE DATE

Registration No. 43844

- Land Surveyor, Professional Engineer
 County Surveyor, County Engineer

OFFICE OF THE COUNTY RECORDER

County of _____

I hereby certify that this document was filed in the Co. Recorders office at _____ .M on the _____ day of _____ A.D. 20 _____

County Recorder _____

By _____, Deputy

DOCUMENT NO. _____

Statement of Evidence

In October, 1864, Chas E. Davis and J.W. Webb Jr. did the original subdivision of the township.

On May 7, 1891, Jonah Peterman found a government mound at the corner.

On April 29, 2015, Bueltel-Moseng Land Surveying set a survey spike with seal #43844 midway and online between the section corners. It is in line with the field line to the west and 10'± south of fence to the east.

Doc# 263813 Fee: \$0.00 2 Pages

Property & Public Services
Property Records Division
Yellow Medicine County, Minnesota

I hereby certify that the within instrument
was filed on March 28, 2016 at 11:30 AM

Janel Timm, Yellow Medicine County Recorder

By Debra Blood Deputy

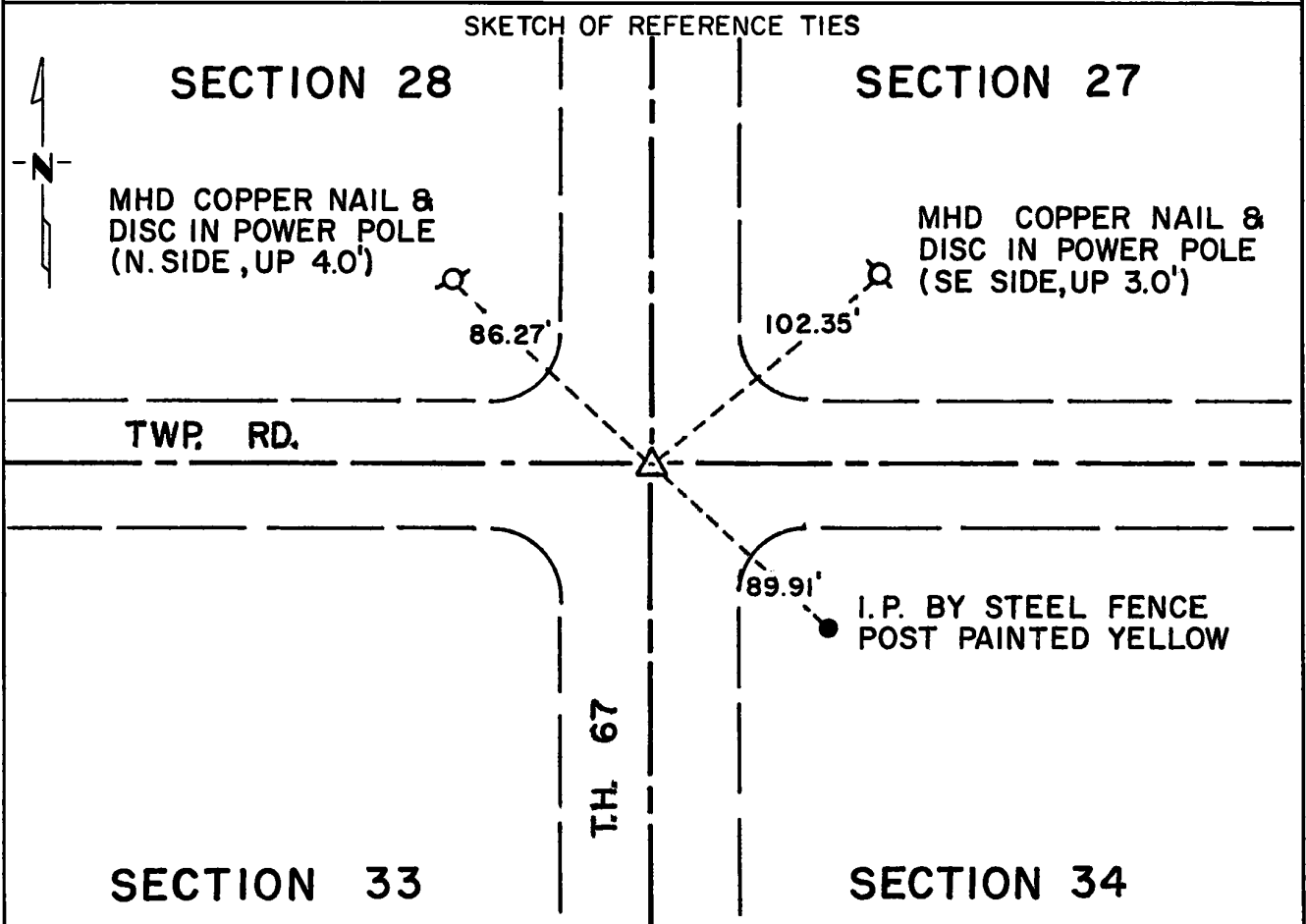
CERTIFICATE OF LOCATION OF GOVERNMENT CORNER

Northeast Corner of Section 33, Township 114N, Range 38W, 5th P.M.

STATE OF MINNESOTA, County of Yellow Medicine

At the corner location shown on the sketch:

- On May 6, 1975 found a 6"x6"x24" Jasper stone on centerline of T.H. 67 and
DATE
E-W Twp. Road. Down 4'.
 - left monument as found, lowered monument, removed monument (explain)
- On Dec. 5, 1975 placed a Minnesota Highway Department cast iron monument
DATE
down 1 inch below road surface.



Statement of evidence relative to this corner location is on back of page.

I hereby certify that this document and the data contained herein was prepared by me or under my direct supervision.

Richard M. Koszynski 3/9/76
SIGNATURE DATE

Registration No. 11526

- Land Surveyor, Professional Engineer
- County Surveyor, County Engineer

OFFICE OF THE REGISTER OF DEEDS
 County of Yellow Medicine

I hereby certify that this document was filed in the Reg. of Deeds office at 9:15 A.M. on the 18 day of March, A.D., 1976

Register of Deeds Norman J. Splahl

By Kay Nordahl, Deputy

DOCUMENT NO. 166658



Statement of Evidence: Northeast Corner Section 33, Township 114 North, Range 38 West

The original Public Land Survey was run in 1864 and a post set in a mound with pits to mark the corner.

In 1891, Jonah Peterman found the government mound.

In 1908, John Norgaard set a jasper monument at the intersection of a north-south-east-west road intersection.

In 1911 John Norgaard found the jasper stone in place.

In 1941, the MHD found a wood stake with no mention of a stone monument.

On May 6, 1975, the Minnesota Highway Department found a 6"x6"x24" jasper monument on centerline of north-south highway and centerline of east-west township road.

An analysis of the record data indicates that the jasper monument set by John Norgaard in 1901 is in the accepted location of the Public Land Survey corner.

CERTIFICATE OF LOCATION OF GOVERNMENT CORNER

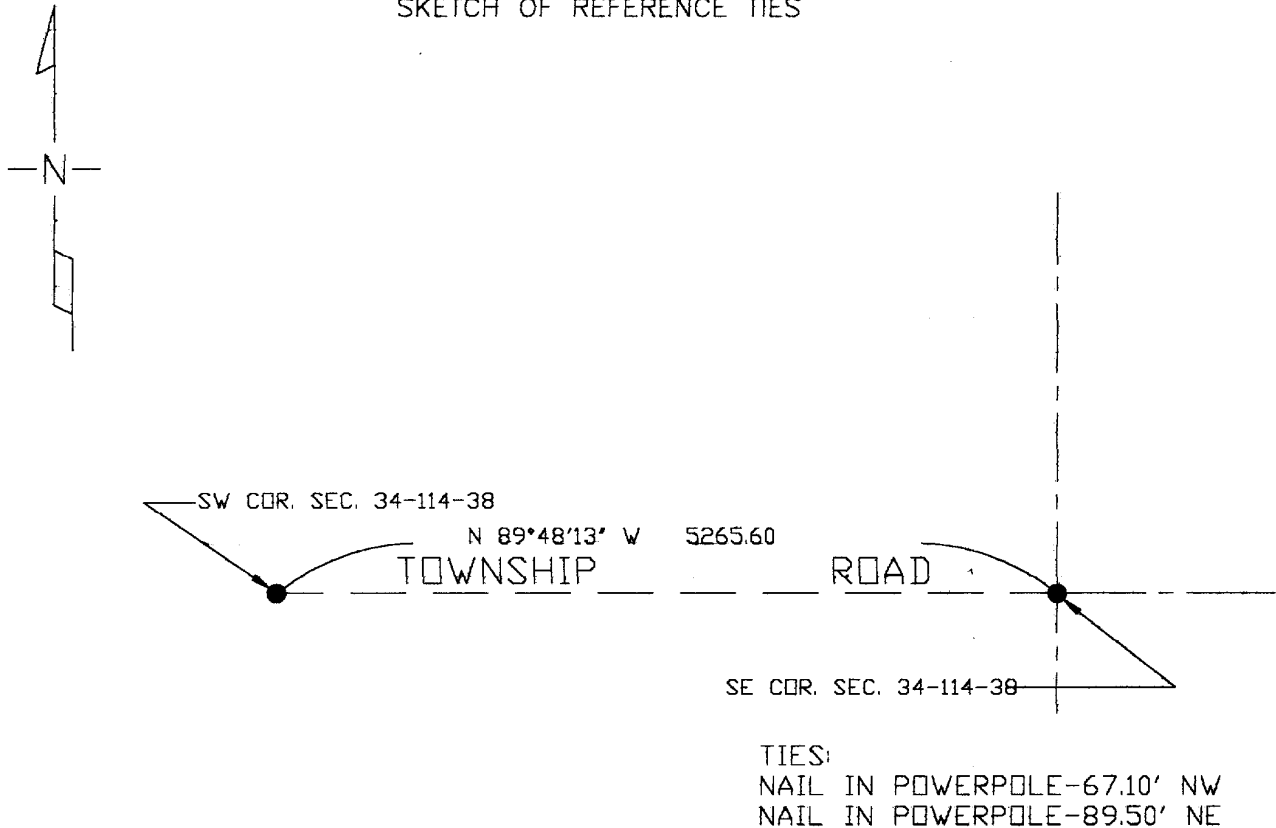
Southeast Corner of Section 34, Township 114, Range 38, 5th P.M.
 STATE OF MINNESOTA, County of Yellow Medicine

At the corner location shown on the sketch

- On 9-24-99 found a 4" x 6" flat stone 1.8' deep with wood sub on north side
 @ centerline of Township Road North, South & East.
 - left monument as found lowered monument, removed monument (explain)

- On 9-24-99 placed a 1" iron pipe with survey cap 23008 over the
top center of stone.

SKETCH OF REFERENCE TIES



Statement of evidence relative to this corner location is on back of page.

I hereby certify that this document and the data contained herein was prepared by me or under my direct supervision.

Perry L. Zieske
 SIGNATURE

10-5-99
 DATE

MN. REGISTRATION NO. 23008

- Land Surveyor, Professional Engineer
- County Surveyor, County Engineer

OFFICE OF THE COUNTY RECORDER

I hereby certify that this document was filed in the Co. Recorder's Office at 3:10 P.M. on the

12 day of October, 1999

County Recorder Kay Nerdahl

By Miss Rohlik, Deputy

DOCUMENT NO. 221235