

# CERTIFICATE OF LOCATION OF GOVERNMENT CORNER

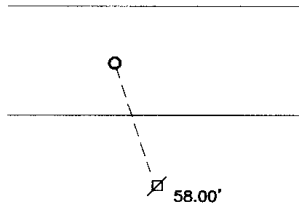
North Quarter Corner of Section 3, Township 114, Range 41, 5th P.M.

STATE OF MINNESOTA, County of Yellow Medicine

At the corner location shown on the sketch:

- On \_\_\_\_\_ found a \_\_\_\_\_  
DATE
- left monument as found,  lowered monument,  removed monument (explain)
- On Oct. 28, 2003 placed a 1" iron pipe w/seal #11943  
DATE

### SKETCH OF REFERENCE TIES



Nail & Seal in Power Pole SSE 58.00'

Statement of evidence relative to this corner location is on back of page.

I hereby certify that this document and the data contained herein was prepared by me or under my direct supervision.

Ryle E. Moseng 1-28-04  
SIGNATURE DATE

Registration No. 11943

- Land Surveyor,  Professional Engineer
- County Surveyor,  County Engineer

### OFFICE OF THE COUNTY RECORDER

County of \_\_\_\_\_  
I hereby certify that this document was filed in the Co. Recorders office at \_\_\_\_\_ M on the \_\_\_\_\_ day of \_\_\_\_\_ A.D. 19 \_\_\_\_\_

County Recorder \_\_\_\_\_

By \_\_\_\_\_, Deputy

DOCUMENT NO. \_\_\_\_\_

Statement of Evidence

On November 8, 1900, John Norguaard surveyed the north line of Section 3.

On October 27, 2003, Moseng Land Surveying dug with a backhoe in center road and in line with fence and found nothing. Placed a 1" iron pipe with seal #11943 proportionately on line between section corners as per survey in 1900.

Doc# 236988      Fee: \$.00      2 Pages  
Office of County Recorder, Yellow Medicine County, Minnesota  
I hereby certify that the within instrument was  
filed on January 4, 2005 at 01:55 PM

Kay Zempel, Yellow Medicine County Recorder  
BY *Maie Runk* Deputy

# CERTIFICATE OF LOCATION OF GOVERNMENT CORNER

Northeast Corner of Section 3, Township 114, Range 41, 5th P.M.

STATE OF MINNESOTA, County of Yellow Medicine

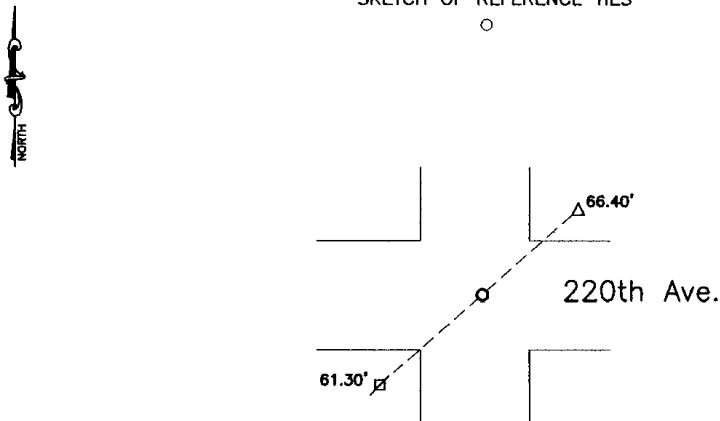
At the corner location shown on the sketch:

On Oct. 27, 2003 found a R.R. spike and sprocket over 6"x6" square cut granite stone  
DATE

left monument as found,  lowered monument,  removed monument (explain)

On Oct. 28, 2003 placed a 1" iron pipe w/seal #11943 at road surface over stone  
DATE

SKETCH OF REFERENCE TIES



Nail & Seal in Power Pole SW 61.30'  
Nail & Seal in Pedestal Post NE 66.40'

Statement of evidence relative to this corner location is on back of page.

I hereby certify that this document and the data contained herein was prepared by me or under my direct supervision.

Lyle E. Moring 1-28-04  
SIGNATURE DATE

Registration No. 11943

Land Surveyor,  Professional Engineer  
 County Surveyor,  County Engineer

OFFICE OF THE COUNTY RECORDER

County of \_\_\_\_\_

I hereby certify that this document was filed in the Co. Recorders office at \_\_\_\_\_ M on the \_\_\_\_\_ day of \_\_\_\_\_ A.D. 19\_\_\_\_

County Recorder \_\_\_\_\_

By \_\_\_\_\_, Deputy

DOCUMENT NO. \_\_\_\_\_

Statement of Evidence

On November 8, 1900, John Norguaard, County Surveyor, set a stone at the NE corner of Section 3.

On October 27, 2003, Moseng Land Surveying dug with a backhoe in center of intersection. Found a R.R. spike and sprocket over 6"x6" square cut granite stone. Set a 1" iron pipe with seal #11943 at road surface, over the found stone.

Doc# 236825      Fee: \$00      2 Pages  
Office of County Recorder, Yellow Medicine County, Minnesota  
I hereby certify that the within instrument was  
filed on December 17, 2004 at 09:05 AM

Kay Zempel, Yellow Medicine County Recorder  
BY           *Kay Zempel*           Deputy.

# CERTIFICATE OF LOCATION OF GOVERNMENT CORNER

Northeast Corner of Section 4, Township 114, Range 41, 5th P.M.

STATE OF MINNESOTA, County of Yellow Medicine

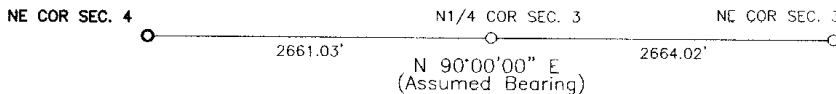
At the corner location shown on the sketch:

On Oct. 27, 2003 found a R.R. spike 1 foot down (see back)  
DATE

left monument as found,  lowered monument,  removed monument (explain)

On Oct. 28, 2003 placed a 1" iron pipe over R.R. spike  
DATE

### SKETCH OF REFERENCE TIES



Nothing to tie to

Statement of evidence relative to this corner location is on back of page.

I hereby certify that this document and the data contained herein was prepared by me or under my direct supervision.

Lyle C. Moring 1-28-04  
SIGNATURE DATE

Registration No. 11943

Land Surveyor,  Professional Engineer  
 County Surveyor,  County Engineer

### OFFICE OF THE COUNTY RECORDER

County of \_\_\_\_\_

I hereby certify that this document was filed in the Co. Recorders office at \_\_\_\_\_ M on the \_\_\_\_\_ day of \_\_\_\_\_ A.D. 19 \_\_\_\_\_

County Recorder \_\_\_\_\_

By \_\_\_\_\_, Deputy

DOCUMENT NO. \_\_\_\_\_

Statement of Evidence

On November 8, 1900, John Norguaard, County Surveyor, set a stone at the NE corner of Section 4.

On October 27, 2003, Moseng Land Surveying dug with a backhoe in center of intersection. Found a R.R. spike 1 foot down. Tied out and continued digging and found nothing. There was evidence that the corner had been up for earlier. Set a 1" iron pipe with seal #11943 at road surface, over the found R.R. spike.

Doc# 236989      Fee: \$.00      2 Pages  
Office of County Recorder, Yellow Medicine County, Minnesota  
I hereby certify that the within instrument was  
filed on January 4, 2005 at 02:00 PM

Kay Zempel, Yellow Medicine County Recorder  
BY Neil Kujala Deputy

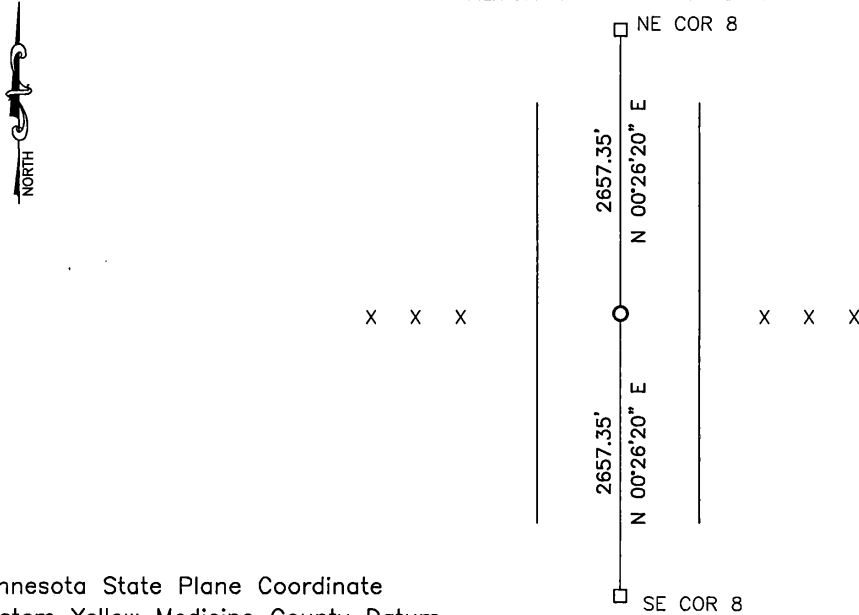
# CERTIFICATE OF LOCATION OF GOVERNMENT CORNER

EAST QUARTER Corner of Section 8, Township 114, Range 41, 5TH P.M.  
STATE OF MINNESOTA, County of YELLOW MEDICINE

At the corner location shown on the sketch:

- On \_\_\_\_\_ found a \_\_\_\_\_  
DATE
- left monument as found,  lowered monument,  removed monument (explain)
- On 2/22/17 placed a survey spike with seal #50343  
DATE

### SKETCH OF REFERENCE TIES



Minnesota State Plane Coordinate  
System Yellow Medicine County Datum  
NAD83 (1996)

N: 156397.100  
E: 523830.080

Statement of evidence relative to this corner location is on back of page.

I hereby certify that this document and the data contained herein was prepared by me or under my direct supervision.

[Signature] SIGNATURE 1/25/18 DATE

Registration No. 50343

- Land Surveyor,  Professional Engineer
- County Surveyor,  County Engineer

**Doc# 268099 Fee: \$0.00 2 Pages**

Property & Public Services  
Property Records Division  
Yellow Medicine County, Minnesota  
I hereby certify that the within instrument  
was filed on March 28, 2018 at 10:40 AM

Janel Timm, Yellow Medicine County Recorder

By Kelly Kruger Deputy

## Statement of Evidence

In 1867, David Watson did the original subdivision of the township.

On February 22, 2017, Bueltel-Moseng Land Surveying set a survey spike with seal #50343 midway and on line between the section corners. It is in the center of the highway and in line with the fences to the east and west as shown on the MnDOT Plans.



# CERTIFICATE OF LOCATION OF GOVERNMENT CORNER

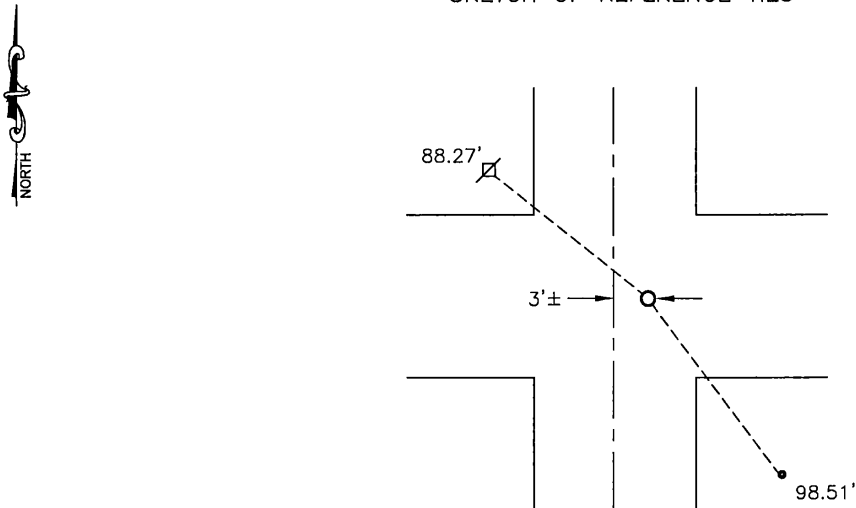
NORTHEAST Corner of Section 8, Township 114, Range 41, 5TH P.M.

STATE OF MINNESOTA, County of YELLOW MEDICINE

At the corner location shown on the sketch:

- On \_\_\_\_\_ found a \_\_\_\_\_  
DATE
- left monument as found,  lowered monument,  removed monument (explain)
- On 2/22/17 placed a survey spike with seal #50343  
DATE

## SKETCH OF REFERENCE TIES



Minnesota State Plane Coordinate  
 System Yellow Medicine County Datum  
 NAD83 (1996)

N: 159054.370  
 E: 523850.430

Nail and bottle cap in utility pole NW 88.27'  
 MnDOT geodetic monument "8703J" SE 98.51'

Statement of evidence relative to this corner location is on back of page.

I hereby certify that this document and the data contained herein was prepared by me or under my direct supervision.

 1/25/18  
SIGNATURE DATE

Registration No. 50343

- Land Surveyor,  Professional Engineer  
 County Surveyor,  County Engineer

**Doc# 268098 Fee: \$0.00 2 Pages**

Property & Public Services  
 Property Records Division  
 Yellow Medicine County, Minnesota  
 I hereby certify that the within instrument was filed on March 28, 2018 at 10:35 AM

Janel Timm, Yellow Medicine County Recorder

By Kelly Kauger Deputy

## Statement of Evidence

In 1867, David Watson did the original subdivision of the township.

(No date), MnDOT recorded GPS coordinates on the monument.

(No date), Marihart Land Surveying found a monument at the corner.

On February 22, 2017, Bueltel-Moseng Land Surveying set a survey spike with seal #50343 by using coordinates from MnDOT. The corner is 3'± east of the center of the highway and in centerline of east and west road.

# CERTIFICATE OF LOCATION OF GOVERNMENT CORNER

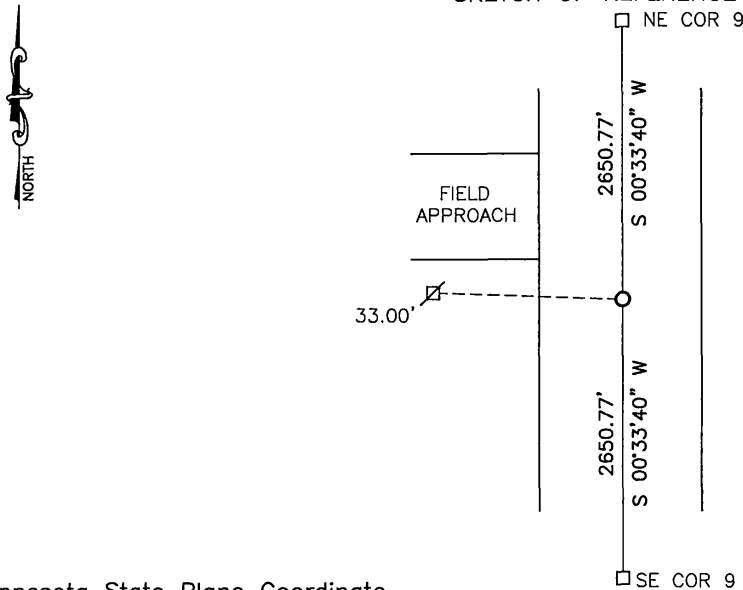
EAST QUARTER Corner of Section 9, Township 114, Range 41, 5TH P.M.

STATE OF MINNESOTA, County of YELLOW MEDICINE

At the corner location shown on the sketch:

- On \_\_\_\_\_ found a \_\_\_\_\_  
DATE
- left monument as found,  lowered monument,  removed monument (explain)
- On 2/22/17 placed a 5/8" iron with seal #50343  
DATE

### SKETCH OF REFERENCE TIES



Minnesota State Plane Coordinate  
 System Yellow Medicine County Datum  
 NAD83 (1996)  
 N: 156335.595  
 E: 529165.499

Nail and bottle cap in utility pole West 33.00'

Statement of evidence relative to this corner location is on back of page.

I hereby certify that this document and the data contained herein was prepared by me or under my direct supervision.

 \_\_\_\_\_  
 SIGNATURE DATE 1/25/18

Registration No. 50343

- Land Surveyor,  Professional Engineer
- County Surveyor,  County Engineer

**Doc# 268101 Fee: \$0.00 2 Pages**

Property & Public Services  
 Property Records Division  
 Yellow Medicine County, Minnesota  
 I hereby certify that the within instrument  
 was filed on March 28, 2018 at 10:50 AM

Janel Timm, Yellow Medicine County Recorder

By Kelley Kauger Deputy

## Statement of Evidence

In 1867, David Watson did the original subdivision of the township.

On May 16, 1891, Jonah Peterman, County Surveyor, established the corner.

On February 22, 2017, Bueltel-Moseng Land Surveying set a 5/8" iron with seal #50343 midway and on line between the section corners.

# CERTIFICATE OF LOCATION OF GOVERNMENT CORNER

NORTHEAST Corner of Section 9, Township 114, Range 41, 5TH P.M.

STATE OF MINNESOTA, County of YELLOW MEDICINE

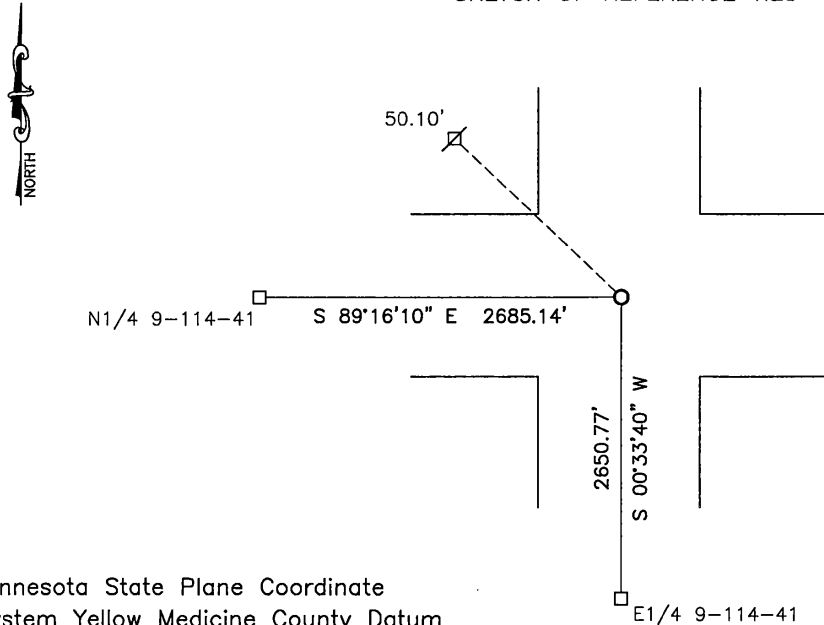
At the corner location shown on the sketch:

On 1/20/16 found a 1" pipe

left monument as found,  lowered monument,  removed monument (explain)

On \_\_\_\_\_ placed a \_\_\_\_\_

### SKETCH OF REFERENCE TIES



Minnesota State Plane Coordinate  
System Yellow Medicine County Datum  
NAD83 (1996)

N: 158986.238  
E: 529191.463

Nail and bottle cap in utility pole NW 50.10'

Statement of evidence relative to this corner location is on back of page.

I hereby certify that this document and the data contained herein was prepared by me or under my direct supervision.

[Signature] 1/25/18  
SIGNATURE DATE

Registration No. 50343

- Land Surveyor,  Professional Engineer
- County Surveyor,  County Engineer

**Doc# 268100 Fee: \$0.00 2 Pages**

Property & Public Services  
Property Records Division  
Yellow Medicine County, Minnesota  
I hereby certify that the within instrument  
was filed on March 28, 2018 at 10:45 AM

Janel Timm, Yellow Medicine County Recorder

By Kelly Kueger Deputy

## Statement of Evidence

In 1867, David Watson did the original subdivision of the township.

On May 16, 1891, Jonah Peterman, County Surveyor, found the corner and set a stone.

On November 18, 1900, John Norgaard, County Surveyor, found a stone at the corner and set a 1" pipe over the stone.

(No date), the Yellow Medicine County Highway Department found a pin at the corner.

(No date), Marihart Land Surveying found a monument at the corner.

On January 20, 2016, Bueltel-Moseng Land Surveying found a 1" pipe at the corner.

# CERTIFICATE OF LOCATION OF GOVERNMENT CORNER

NORTHEAST Corner of Section 10, Township 114 N., Range 41 W., 5th. P.M.

STATE OF MINNESOTA, County of YELLOW MEDICINE

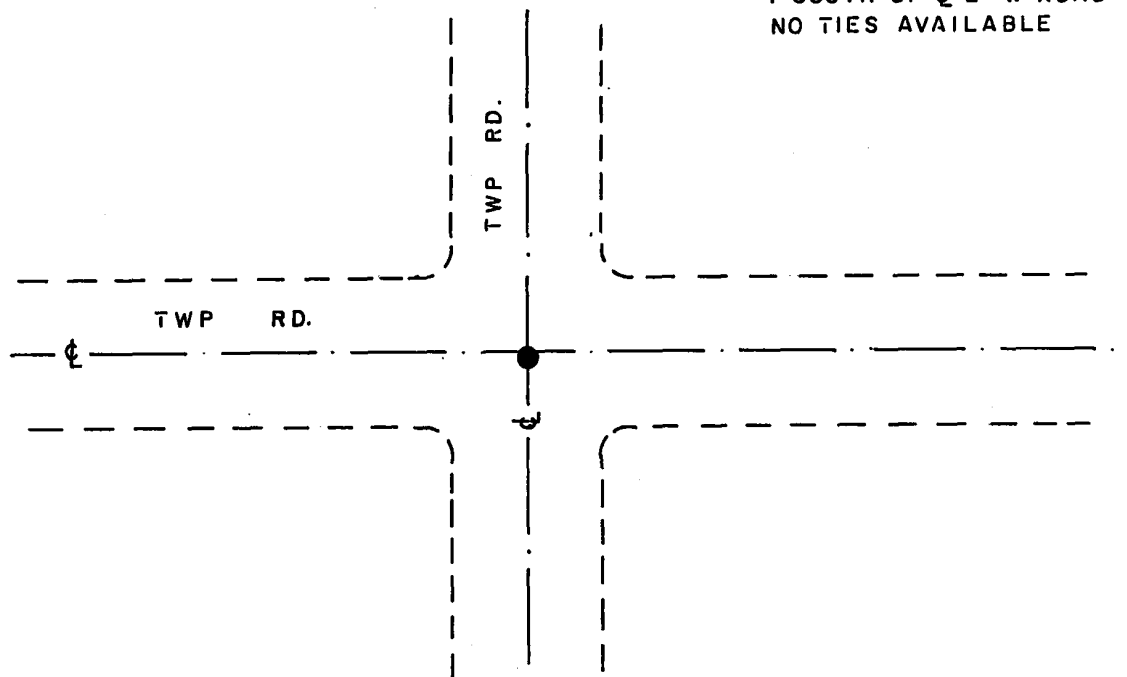
At the corner location shown on the sketch:

- On 7-21-87 found a 5/8" x 24" CAPPED REBAR STAMPED "MARK HURD  
DATE  
AERIAL, DOWN 0.3'
- left monument as found,  lowered monument,  removed monument (explain)
- On \_\_\_\_\_ placed a \_\_\_\_\_  
DATE

## SKETCH OF REFERENCE TIES



NOTE:  
 MONUMENT IS  
 ON  $\phi$  N-S ROAD  
 1' SOUTH OF  $\phi$  E-W ROAD  
 NO TIES AVAILABLE



Statement of evidence relative to this corner location is on back of page.

J.R.M. 8-4-87  
A-1105

RECORDED  
 GRANTOR ✓  
 GRANTEE ✓  
 INDEXED ✓

I hereby certify that this document and the data contained herein was prepared by me or under my direct supervision.

Lowell R. Pomeroy SIGNATURE 8-20-87 DATE

Registration No. 17005

Land Surveyor,  Professional Engineer

County Surveyor,  County Engineer

## OFFICE OF THE COUNTY RECORDER

County of Yellow Medicine

I hereby certify that this document was filed in the Co. Recorders office at 9:45 A.M. on the 24 day of August A.D., 19 87

County Recorder Norman J. Opdahl

By Kay Nerdahl, Deputy

DOCUMENT NO. 191464

Northeast Corner Section 10, Township 114 North, Range 41 West

The DNR Bureau of Engineering contacted the following offices for corner information:

Secretary of State  
Yellow Medicine County Recorder  
Yellow Medicine County Highway Engineer

1867 U.S. General Land Office notes in the Secretary of State's Office describes this corner as a set post with charred stake, mound and pits.

1891 Surveyor's Record Book, on page 104, from the County Recorder's Office, contains a survey by Jonah Peterman, County Surveyor. Survey states all of the government corners in Section 10 were found. No mention is made about anything being set to perpetuate their location.

1901 Surveyor's Record Book B, on page 163, from the County Recorder's Office, contains a collection of what was found at government section corners by John Norgaard, County Surveyor, in a township re-monumentation survey. Norgaard states this corner was a found stake in the government mound. A 6" by 6" by 24" jasper granite stone was set at this location, its top level with the ground, Page 33 of Surveyor's Record Book B is a township plat showing distances between government corners obtained from Norgaard's re-monumentation survey. This corner is shown 5306 feet from the northeast corner of Section 15.

No Date A tie page of field notes from the County Highway Engineer's Office, shows four ties to this corner. A note is made to a field stone being in place.

1987 April 14, the DNR Bureau of Engineering found a 5/8" diameter rebar, capped and stamped "Mark Hurd Aerial". Monument is 1 ft. south of centerline east-west road and on centerline north-south road. Contacted Mark Hurd Aerial Surveys for information on this corner. A Contractor for Mark Hurd stated this monument was set at occupation only, no search was made for the corner. July 21, the DNR Bureau of Engineering hired a backhoe operated by Peterson Excavating of Clarkfield to dig for evidence of this corner. Dug a 10 ft. north-south by 12 ft. east-west hole, the center being at the intersection of the above mentioned roads. Found many large field stones between surface of road and natural ground down 36". Average size of stones was 10" by 10" by 10" no markings were found on any of them. Continued excavation down to 54" but found nothing else, replaced all stones found along with Mark Hurd monument. Searched for, but did not find any record ties. Mark Hurd monument measures 5300.36 feet to the northeast corner of Section 15.

Analysis of the available information led the DNR Bureau of Engineering to conclude that the Mark Hurd monument marks the obliterated position of the corner. None of the found field stones could be identified as the corner.



# CERTIFICATE OF LOCATION OF GOVERNMENT CORNER

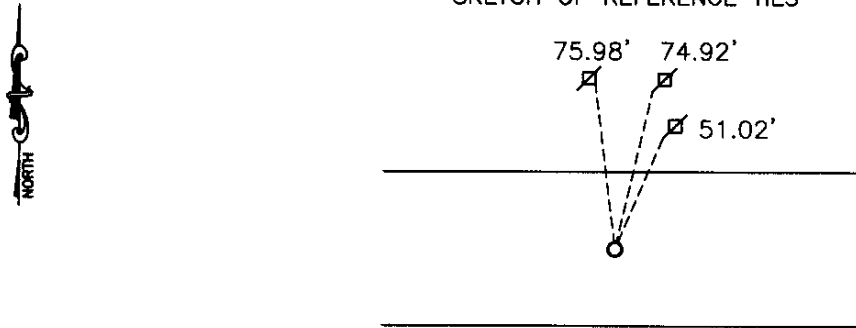
NORTHEAST Corner of Section 13, Township 114, Range 41, 5TH P.M.

STATE OF MINNESOTA, County of YELLOW MEDICINE

At the corner location shown on the sketch:

- On \_\_\_\_\_ found a \_\_\_\_\_  
DATE
- left monument as found,  lowered monument,  removed monument (explain)
- On 05-04-2007 placed a SURVEY SPIKE WITH SEAL #43844  
DATE

### SKETCH OF REFERENCE TIES



Nail and bottle cap in single power pole NE 51.02'  
 Nail and bottle cap in East twin pole NE 74.92'  
 Nail and bottle cap in West twin pole NW 75.98'

Minnesota State Plane Coordinate  
 System Yellow Medicine County Datum  
 NAD83 (1996)

N: 153526.255  
 E: 545005.586

Statement of evidence relative to this corner location is on back of page.

I hereby certify that this document and the data contained herein was prepared by me or under my direct supervision.

*Samuel B. Smith* Feb. 19 2008  
 SIGNATURE DATE

Registration No. 43844

- Land Surveyor,  Professional Engineer
- County Surveyor,  County Engineer

### OFFICE OF THE COUNTY RECORDER

County of \_\_\_\_\_

I hereby certify that this document was filed in the Co. Recorders office at \_\_\_\_\_ .M on the \_\_\_\_\_ day of \_\_\_\_\_ A.D. 20 \_\_\_\_\_

County Recorder \_\_\_\_\_

By \_\_\_\_\_, Deputy

DOCUMENT NO. \_\_\_\_\_

## Statement of Evidence

In 1858, W. J. Neely did the original survey of the township lines.

The Yellow Medicine Highway Department has ties to the recorded corner before construction.

On May 4, 2007, Bueltel-Moseng Land Surveying found nothing at the corner, it was removed during construction. We used the Yellow Medicine Highway Department ties to put the corner back in.

Doc# 245323 Fee: \$0.00 2 Pages

Office of County Recorder  
Yellow Medicine County, Minnesota  
I hereby certify that the within instrument  
was filed on April 8, 2008 at 11:30 AM

N/C Bueltel-Moseng Land Surveying  
PO Box 32  
Marshall MN 56258

Kay Zempel, Yellow Medicine County Recorder

By Debra Blood Deputy

# CERTIFICATE OF LOCATION OF GOVERNMENT CORNER

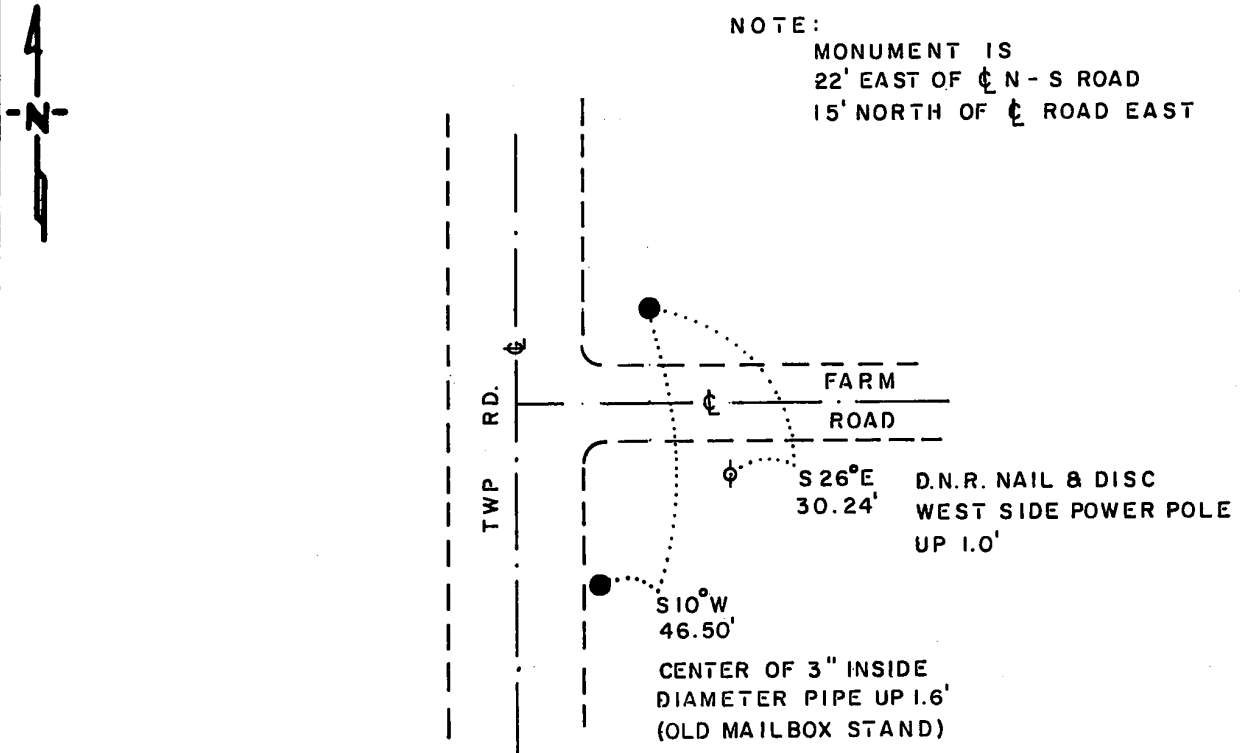
EAST QUARTER Corner of Section 15, Township 114 N., Range 41 W., 5th. P.M.

STATE OF MINNESOTA, County of YELLOW MEDICINE

At the corner location shown on the sketch:

- On \_\_\_\_\_ found a \_\_\_\_\_  
DATE
- left monument as found,  lowered monument,  removed monument (explain)
- On 8-12-87 placed a 1 1/4" x 1 1/4" x 20" PERFORATED STEEL TUBE WITH  
DATE  
ALUMINUM CAP STAMPED "D.N.R. SURVEY MARKER", DOWN 0.2'

### SKETCH OF REFERENCE TIES



### BEARINGS OBSERVED WITH COMPASS

Statement of evidence relative to this corner location is on back of page.

J.B.M. 8-18-87  
A-1105

RECORDED  
GRANTED  
GRANTEE  
INDEXED

I hereby certify that this document and the data contained herein was prepared by me or under my direct supervision.

Lowell R. Pundarikoff Jr. 8-20-87  
SIGNATURE DATE

Registration No. 17005

- Land Surveyor,  Professional Engineer
- County Surveyor,  County Engineer

### OFFICE OF THE COUNTY RECORDER

County of Yellow Medicine

I hereby certify that this document was filed in the Co. Recorders office at 9:55 A.M. on the 24 day of August A.D., 19 87

County Recorder Norman J. Opdahl

By Kay Nordahl, Deputy

DOCUMENT NO. 191466

East Quarter Corner Section 15, Township 114 North, Range 41 West

The DNR Bureau of Engineering contacted the following offices for corner information:

Secretary of State  
Yellow Medicine County Recorder  
Yellow Medicine County Highway Engineer

- 1867 U.S. General Land Office notes in the Secretary of State's Office describes this corner as a set post with charred stake, mound and pits.
- 1891 Surveyor's Record Book, on page 104, from the County Recorder's Office, contains a survey by Jonah Peterman, County Surveyor. Survey states a line was "run from East  $\frac{1}{4}$  to West  $\frac{1}{4}$  post". A stone is shown at this corner, which measures 40.50 chains (2673.00 ft.) from the northeast corner Section 15.
- 1901 Surveyor's Record Book B, on page 33, from the County Recorder's Office, contains a township plat showing distances between government corners obtained from a re-monumentation survey by John Norgaard, County Surveyor. No mention of this corner is made, but a distance of 5306 ft. is shown between adjoining section corners. Adjoining section corners were not found, but re-established by the re-monumentation survey by Norgaard.
- 1987 July 21, the DNR Bureau of Engineering conducted a search for this corner centered on the lost position. The lost position falls 20 ft. east of a north-south road and 6 ft. north of a driveway east, in a mowed lawn area, very well kept. Talked with landowner, Darrel Nikolaisen, approximately 65 years old, who has never seen or heard of a monument in this area, and would not allow any digging here. Scanned a 20 ft. diameter area with an electronic metal locator, but found nothing. Lost position was found to measure 2660.08 ft. from adjoining section corners.

Analysis of the available information led the DNR Bureau of Engineering to conclude that the corner is lost and accepted the lost position for its location.

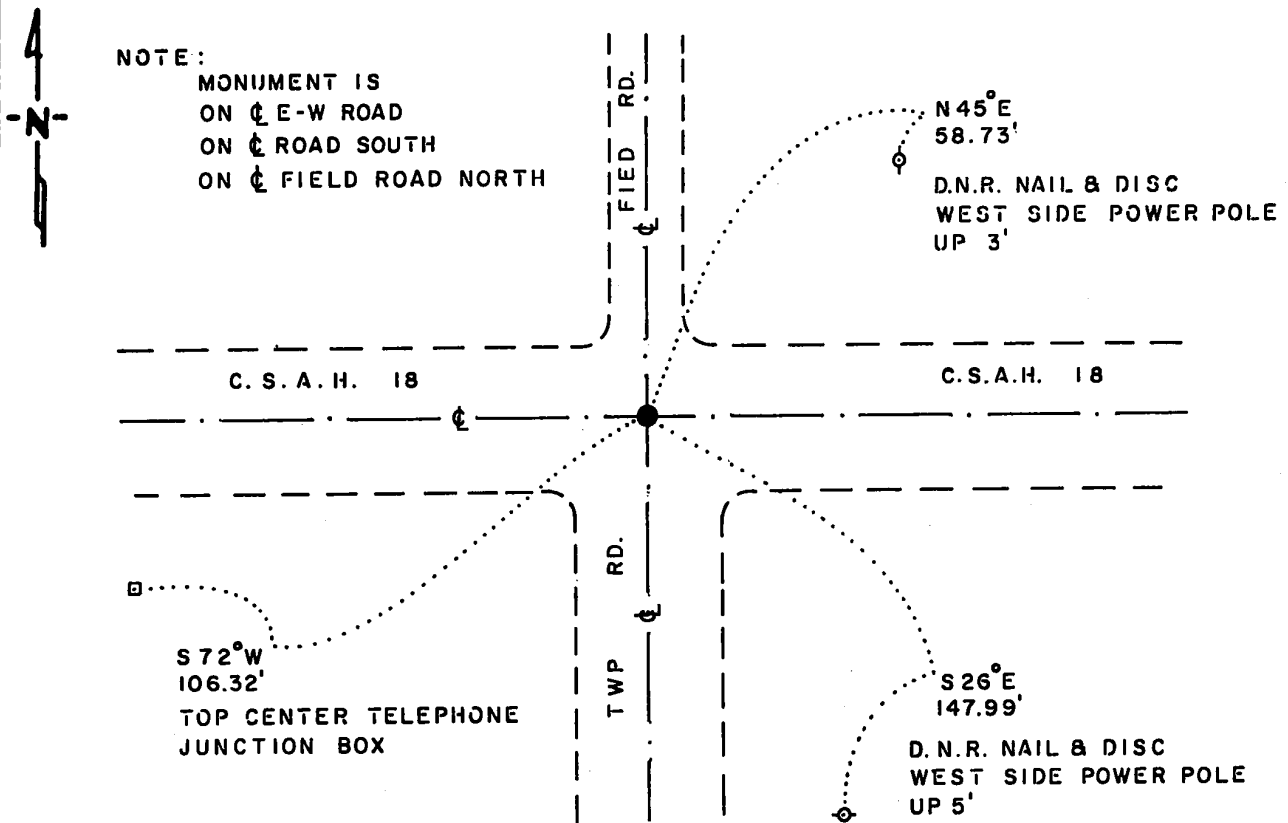
# CERTIFICATE OF LOCATION OF GOVERNMENT CORNER

**NORTHEAST** Corner of Section 15, Township 114 N., Range 41 W., 5th. P.M.  
 STATE OF MINNESOTA, County of YELLOW MEDICINE

At the corner location shown on the sketch:

- On 7-21-87 found a 1/2" x 20" SQUARE IRON ROD, DOWN 18"  
DATE
- left monument as found,  lowered monument,  removed monument (explain)
- On 7-21-87 placed a 1/4" x 1/4" x 20" PERFORATED STEEL TUBE WITH  
DATE  
ALUMINUM CAP STAMPED "D.N.R. SURVEY MARKER", FLUSH, OVER IRON ROD

### SKETCH OF REFERENCE TIES



NOTE:  
 MONUMENT IS  
 ON  $\text{\textcircled{C}}$  E-W ROAD  
 ON  $\text{\textcircled{C}}$  ROAD SOUTH  
 ON  $\text{\textcircled{C}}$  FIELD ROAD NORTH

#### BEARINGS OBSERVED WITH COMPASS

Statement of evidence relative to this corner location is on back of page.

J.R.M. 8-4-87  
 A-1108

RECORDED  
 GRANTED  
 GRANTED  
 INDEXED

I hereby certify that this document and the data contained herein was prepared by me or under my direct supervision.

Lowell R. Pomeroy Jr. 8-20-87  
SIGNATURE DATE

Registration No. 17005  
 Land Surveyor,  Professional Engineer  
 County Surveyor,  County Engineer

OFFICE OF THE COUNTY RECORDER  
 County of Yellow Medicine

I hereby certify that this document was filed in the Co. Recorders office at 9:50 AM. on the 24 day of August A.D., 19 87

County Recorder Norman J. Opdahl  
 By Kay Nordahl, Deputy  
 DOCUMENT NO. 191465

Northeast Corner Section 15, Township 114 North, Range 41 West

The DNR Bureau of Engineering contacted the following offices for corner information:

Secretary of State  
Yellow Medicine County Recorder  
Yellow Medicine County Highway Engineer

- 1867 U.S. General Land Office notes in the Secretary of State's Office describes this corner as a set post with charred stake, mound and pits.
- 1891 Surveyor's Record Book, on page 104, from the County Recorder's Office, contains a survey by Jonah Peterman, County Surveyor. Survey states this was a found government corner. A stone is shown at this location. Corner measures 40.50 chains (2673.00 ft.) from the east quarter corner of Section 15.
- 1901 Surveyor's Record Book B, on page 163, from the County Recorder's Office, contains a collection of what was found at government section corners by John Norgaard, County Surveyor, in a township re-monumentation survey. Norgaard states this corner was "located at equal proportional distances from the northeast corner Section 10, the meander corner on the north side of lake between Sections 22 and 23, the north  $\frac{1}{4}$  post Section 14 and the northwest corner Section 15". A 6" by 6" by 24" jasper granite stone was set at this location 3" above ground. Page 33 of Surveyor's Record Book B is a township plat showing distances between government corners obtained from Norgaard's re-monumentation survey. This corner is shown:  
5306 ft. from the northeast corner of Section 10  
5306 ft. from the northeast corner of Section 22  
7018 ft. from meander corner between Sections 22 and 23  
5300 ft. from the northwest corner of Section 15  
2659 ft. from the north quarter corner of Section 14
- 1927 Surveyor's Record Book, on Page 508, from the County Recorder's Office, contains a survey by John Norgaard, County Surveyor. Two ties are shown for this corner, but no mention of a monument is made. A distance of 5300 ft. is shown from this corner to the northwest corner Section 15.
- 1966 A tie page of field notes from the County Highway Engineer's Office shows six ties to this corner, but no mention of a monument is made.
- 1987 April 2, the DNR Bureau of Engineering found a nail and disc at the intersection of roads north-south and east-west. July 21, dug the corner by hand and found a  $\frac{1}{2}$ " by 20" square iron rod down 18" under the nail and disc. Probed in all directions to depth of 40" but hit nothing else, no other metal attraction. Searched for, but found no evidence of record ties. Replaced square iron rod as found and measured:  
5300.36 ft. to the northeast corner Section 10  
5320.17 ft. to the northeast corner Section 22

Analysis of the available information led the DNR Bureau of Engineering to conclude that the found square iron rod marks the location of the corner. Due to the ties recorded by the County Highway Engineer, it is believed the corner was located, removed by road construction, and then reset.

# CERTIFICATE OF LOCATION OF GOVERNMENT CORNER

NORTH QUARTER Corner of Section 16, Township 114, Range 41, 5TH P.M.

STATE OF MINNESOTA, County of YELLOW MEDICINE

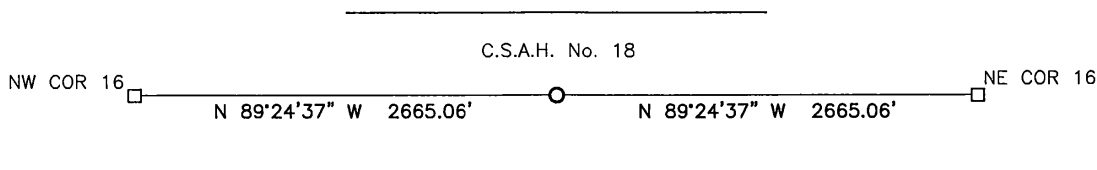
At the corner location shown on the sketch:

On \_\_\_\_\_ found a \_\_\_\_\_  
DATE

left monument as found,  lowered monument,  removed monument (explain)

On 2/22/17 placed a survey spike with seal #50343  
DATE

### SKETCH OF REFERENCE TIES




Minnesota State Plane Coordinate  
System Yellow Medicine County Datum  
NAD83 (1996)

N: 153712.379  
E: 526474.620

Statement of evidence relative to this corner location is on back of page.

I hereby certify that this document and the data contained herein was prepared by me or under my direct supervision.

  
SIGNATURE      1/25/18  
DATE

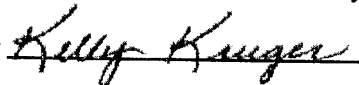
Registration No. 50343

Land Surveyor,     Professional Engineer  
 County Surveyor,     County Engineer

**Doc# 268103 Fee: \$0.00 2 Pages**

Property & Public Services  
Property Records Division  
Yellow Medicine County, Minnesota  
I hereby certify that the within instrument  
was filed on March 28, 2018 at 11:00 AM

Janel Timm, Yellow Medicine County Recorder

By  Deputy

## Statement of Evidence

In 1867, David Watson did the original subdivision of the township.

On October 11, 1901, John Norgaard, County Surveyor, set a monument midway and on line between the section corners.

On February 22, 2017, Bueltel-Moseng Land Surveying set a survey spike with seal #50343 midway and on line between the section corners.



# CERTIFICATE OF LOCATION OF GOVERNMENT CORNER

NORTHEAST Corner of Section 16, Township 114, Range 41, 5TH P.M.

STATE OF MINNESOTA, County of YELLOW MEDICINE

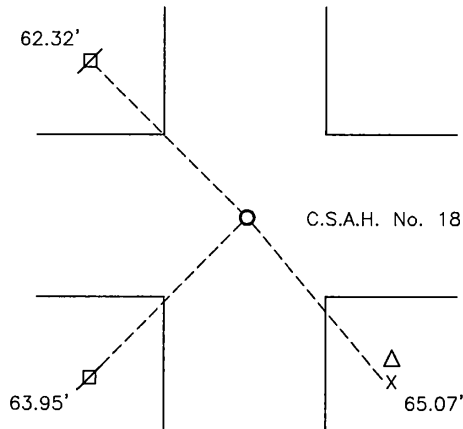
At the corner location shown on the sketch:

On \_\_\_\_\_ found a \_\_\_\_\_  
DATE

left monument as found,  lowered monument,  removed monument (explain)

On 2/22/17 placed a 5/8" iron with seal #50343  
DATE

### SKETCH OF REFERENCE TIES




Minnesota State Plane Coordinate  
System Yellow Medicine County Datum  
NAD83 (1996)

N: 153684.953  
E: 529139.535

Nail and bottle cap in utility pole NW 62.32'  
Nail and bottle cap in utility pole SW 63.95'  
Nail and bottle cap in pedestal post SE 65.07'

Statement of evidence relative to this corner location is on back of page.

I hereby certify that this document and the data contained herein was prepared by me or under my direct supervision.

  
SIGNATURE

1/25/18  
DATE

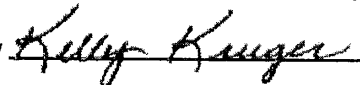
Registration No. 50343

- Land Surveyor,  Professional Engineer
- County Surveyor,  County Engineer

**Doc# 268102 Fee: \$0.00 2 Pages**

Property & Public Services  
Property Records Division  
Yellow Medicine County, Minnesota  
I hereby certify that the within instrument  
was filed on March 28, 2018 at 10:55 AM

Janel Timm, Yellow Medicine County Recorder

By  Deputy

## Statement of Evidence

In 1867, David Watson did the original subdivision of the township.

On May 16, 1891, Jonah Peterman, County Surveyor, recorded a stone at the corner.

(No date), the Yellow Medicine County Highway Department found an iron at the corner.

On February 22, 2017, Bueltel-Moseng Land Surveying set a 5/8" iron with seal #50343 over found iron by using GPS coordinates from the highway department.

# CERTIFICATE OF LOCATION OF GOVERNMENT CORNER

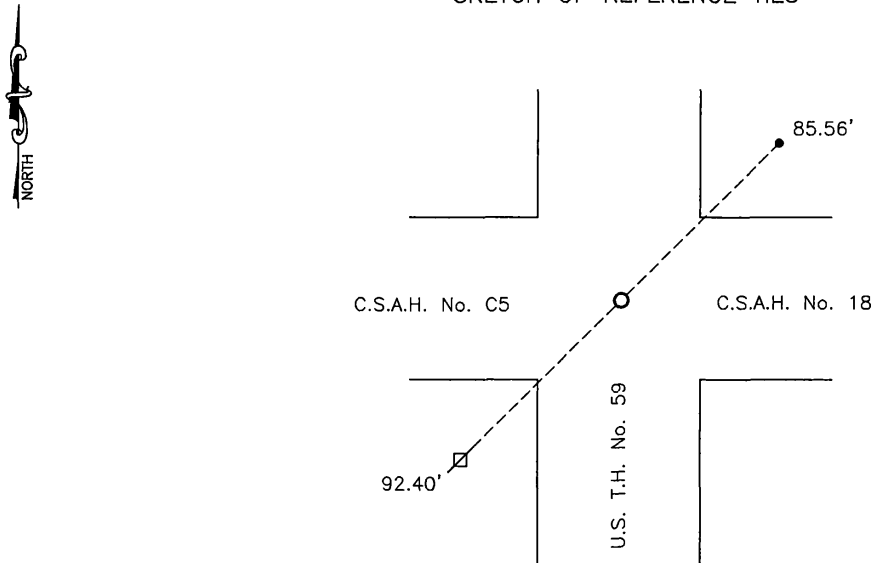
NORTHEAST Corner of Section 17, Township 114, Range 41, 5TH P.M.

STATE OF MINNESOTA, County of YELLOW MEDICINE

At the corner location shown on the sketch:

- On \_\_\_\_\_ found a \_\_\_\_\_  
DATE
- left monument as found,  lowered monument,  removed monument (explain)
- On 2/22/17 placed a survey spike with seal #50343  
DATE

### SKETCH OF REFERENCE TIES



Minnesota State Plane Coordinate System Yellow Medicine County Datum NAD83 (1996)

N: 153739.830  
E: 523809.730

Nail and bottle cap in utility pole SW 92.40'  
MnDOT geodetic monument "8703P" NE 85.56'

Statement of evidence relative to this corner location is on back of page.

I hereby certify that this document and the data contained herein was prepared by me or under my direct supervision.

[Signature] 4/25/18  
SIGNATURE DATE  
Registration No. 50343

- Land Surveyor,  Professional Engineer
- County Surveyor,  County Engineer

**Doc# 268104 Fee: \$0.00 2 Pages**

Property & Public Services  
Property Records Division  
Yellow Medicine County, Minnesota  
I hereby certify that the within instrument was filed on March 28, 2018 at 11:05 AM

Janel Timm, Yellow Medicine County Recorder

By Kelley Kauger Deputy

## Statement of Evidence

In 1867, David Watson did the original subdivision of the township.

(No date), MnDOT recorded GPS coordinates on teh monument.

On February 22, 2017, Bueltel-Moseng Land Surveying set a survey spike with seal #50343 by using coordinates from MnDOT. The corner falls in the center of the intersection as shown on the MnDOT Plans.

# CERTIFICATE OF LOCATION OF GOVERNMENT CORNER

NORTHEAST Corner of Section 18, Township 114, Range 41, 5TH P.M.

STATE OF MINNESOTA, County of YELLOW MEDICINE

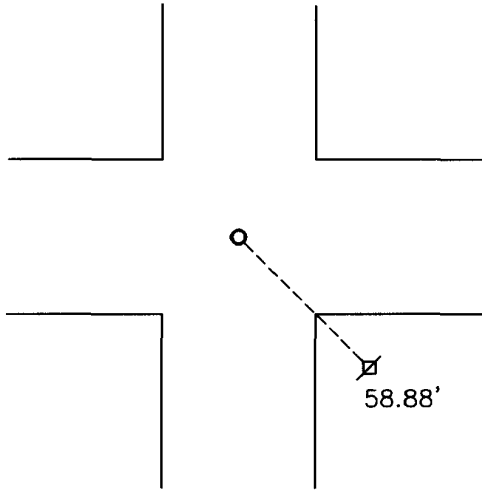
At the corner location shown on the sketch:

On 10-11-2011 found a Yellow Medicine County spike.  
DATE

left monument as found,  lowered monument,  removed monument (explain)

On 10-11-2011 placed a 5/8" iron with seal #43844.  
DATE

### SKETCH OF REFERENCE TIES



Minnesota State Plane Coordinate  
System Yellow Medicine County Datum  
NAD83 (1996)

N: 153706.085  
E: 518488.262

Nail and bottle cap in utility pole SE 58.88'

Statement of evidence relative to this corner location is on back of page.

I hereby certify that this document and the data contained herein was prepared by me or under my direct supervision.

*[Signature]* 1/20/12  
SIGNATURE DATE

Registration No. 43844

Land Surveyor,  Professional Engineer  
 County Surveyor,  County Engineer

OFFICE OF THE COUNTY RECORDER

County of \_\_\_\_\_

I hereby certify that this document was filed in the Co. Recorders office at \_\_\_\_\_ .M on the \_\_\_\_\_ day of \_\_\_\_\_ A.D. 20 \_\_\_\_\_

County Recorder \_\_\_\_\_

By \_\_\_\_\_, Deputy

DOCUMENT NO. \_\_\_\_\_

Statement of Evidence

In 1867, David Watson did the original subdivision of the township.

In 1985, the Yellow Medicine County Highway Department found a railroad spike at the corner. The held to the railroad spike and set a county spike over it after regrading the road.

On October 11, 2011, Bueltel-Moseng Land Surveying found a Yellow Medicine County spike at the corner. We removed the spike and placed a  $\frac{5}{8}$ " iron with seal #43844 in its place.

Doc# 254462 Fee: \$0.00 2 Pages  
Property & Public Services  
Property Records Division  
Yellow Medicine County, Minnesota  
I hereby certify that the within instrument  
was filed on January 23, 2012 at 10:20 AM

Janel Timm, Yellow Medicine County Recorder

By  Deputy

N/C  
Bueltel-Moseng Land Surveying  
PO Box 32  
Marshall, MN 56258

# CERTIFICATE OF LOCATION OF GOVERNMENT CORNER

EAST QUARTER Corner of Section 18, Township 114, Range 41, 5TH P.M.

STATE OF MINNESOTA, County of YELLOW MEDICINE

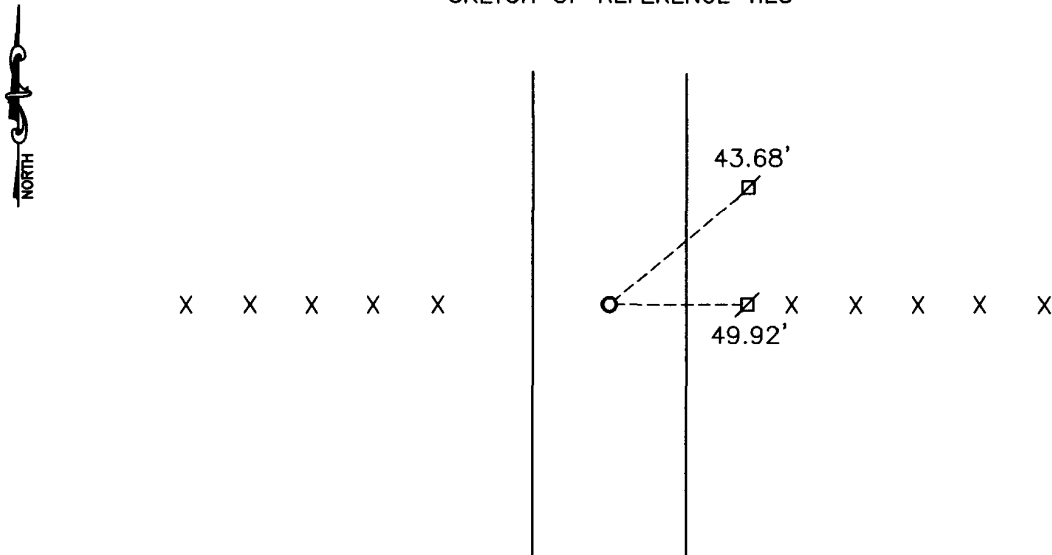
At the corner location shown on the sketch:

On \_\_\_\_\_ found a \_\_\_\_\_  
DATE

left monument as found,  lowered monument,  removed monument (explain)

On 10-11-2011 placed a 5/8" iron with seal #43844.  
DATE

### SKETCH OF REFERENCE TIES



Minnesota State Plane Coordinate  
System Yellow Medicine County Datum  
NAD83 (1996)

N: 151048.827  
E: 518487.847

Nail and seal in utility pole NE 43.68'  
Nail and seal in utility pole East 49.92'

Statement of evidence relative to this corner location is on back of page.

I hereby certify that this document and the data contained herein was prepared by me or under my direct supervision.

*[Signature]* 1/20/12  
SIGNATURE DATE

Registration No. 43844

Land Surveyor,  Professional Engineer  
 County Surveyor,  County Engineer

OFFICE OF THE COUNTY RECORDER

County of \_\_\_\_\_

I hereby certify that this document was filed in the Co. Recorders office at \_\_\_\_\_ .M on the \_\_\_\_\_ day of \_\_\_\_\_ A.D. 20 \_\_\_\_\_

County Recorder \_\_\_\_\_

By \_\_\_\_\_, Deputy

DOCUMENT NO. \_\_\_\_\_

Statement of Evidence

In 1867, David Watson did the original subdivision of the township.

On October 11, 2011, Bueltel-Moseng Land Surveying set a  $\frac{5}{8}$ " iron with seal #43844 midway and on line between the section corners.

Doc# 254461 Fee: \$0.00 2 Pages  
Property & Public Services  
Property Records Division  
Yellow Medicine County, Minnesota  
I hereby certify that the within instrument  
was filed on January 23, 2012 at 10:15 AM

Janel Timm, Yellow Medicine County Recorder

By Debra Blood Deputy

N/C  
Bueltel-Moseng Land Surveying  
PO Box 32  
Marshall, MN 56258



# CERTIFICATE OF LOCATION OF GOVERNMENT CORNER

Corner to Section 19 Township 114 N Range 41 W.

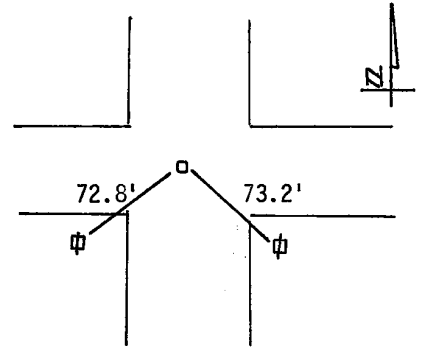
No. \_\_\_\_\_

STATE OF MINNESOTA,

County of Yellow Medicine S.S.

I hereby certify that on the 3 rd day of June 1980,  
that I, Lyle E. Moseng, a Registered Land Surveyor, County Surveyor,  
County Highway Engineer, found the Northeast corner of Section 19  
which was evidenced by Railroad Spike with County Hwy Dept Ties  
and I further certify that to perpetuate the  
location of such corner I did, at the exact location thereof, place a permanent  
marker consisting of Left as Found.  
I further certify that I established 2 references or witness monuments consist-  
ing of Power Poles which reference or witness monuments are  
located in the manner following.

Nail and BC in Power Pole SE. 73.2 Ft.  
Nail and Bc in Power Pole SW. 72.8 Ft.



Dated at Marshall, Minnesota, this 28 th day of July, 1980.

Lyle E. Moseng  
County Surveyor, County Highway Engineer,  
Registered Land Surveyor No. \_\_\_\_\_

**183016**  
OFFICE OF THE REGISTER OF DEEDS

County of Yellow Medicine

I hereby certify that the within instrument was filed in this office for  
record on the 16 day of November A.D., 1983, at 3:10 o'clock P.M.

Norman J. Opdahl, County Recorder

Register of Deeds

by Kay Nordahl Deputy

# CERTIFICATE OF LOCATION OF GOVERNMENT CORNER

Corner to Section 20 Township 114 N. Range 41 W. No. \_\_\_\_\_

STATE OF MINNESOTA,

County of Yellow Medicine S.S.

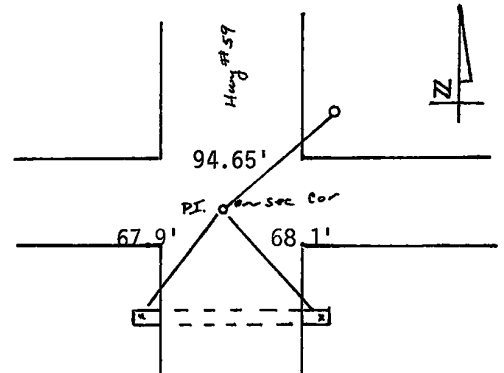
I hereby certify that on the 3rd day of June 19 80,  
that I, Lyle E. Moseng, a Registered Land Surveyor, ~~COUNTY SURVEYOR,~~  
~~COUNTY HIGHWAY ENGINEER,~~ SET found the Northeast corner of Section 20  
\_\_\_\_\_ which was evidenced by R.R. Spike Set as P.I. by the Minn. Highway Dept.

~~Set~~ \_\_\_\_\_ and I further certify that to perpetuate the  
location of such corner I did, at the exact location thereof, place a permanent  
marker consisting of Set a PK Nail.

I further certify that I established 3 references or witness monuments consist-  
ing of Highway B.M. X in Culvert which reference or witness monuments are  
located in the manner following.

X in Concrete Culvert	SW. 67.9 ft.
X in Concrete Culvert	SE. 68.1 Ft.
Conc. Bench Mark	NE. 94.65 Ft.

NOTE TIES ARE TO HIGHWAY DEPT. P.I. THE CORNER  
IS LOCATED 1.3 ft. NORTH AND 0.9 FT. EAST OF  
P.I.



Dated at Marshall, Minnesota, this 28 th day of July, 19 80.

**183018**  
OFFICE OF THE REGISTER OF DEEDS

County of Yellow Medicine

Lyle E. Moseng  
~~County Surveyor, County Highway Engineer,~~  
Registered Land Surveyor No. 11943

I hereby certify that the within instrument was filed in this office for  
record on the 16 day of November A.D., 19 83, at 3:20 o'clock P.M.

Norman J. Opdahl, County Recorder

Register of Deeds

by Kay Dardake Deputy

# CERTIFICATE OF LOCATION OF GOVERNMENT CORNER

Corner to Section 20 Township 114 N. Range 41 W. No. \_\_\_\_\_

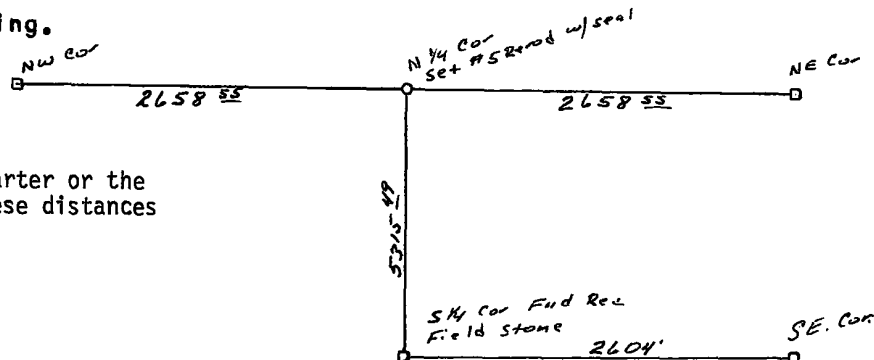
STATE OF MINNESOTA,

County of Yellow Medicine S.S.

I hereby certify that on the 3rd day of June 1980,  
 that I, Lyle E. Moseng a Registered Land Surveyor, ~~County Surveyor,~~  
~~County Highway Engineer,~~ Set North Quarter  
 found the South Quarter corner of Section 20  
No. 5 Rerod With Seal 11943  
 which was evidenced by Field Stone

\_\_\_\_\_ and I further certify that to perpetuate the  
 location of such corner I did, at the exact location thereof, place a permanent  
 marker consisting of \_\_\_\_\_.

I further certify that I established \_\_\_\_\_ references or witness monuments consist-  
 ing of There was nothing to tie it to. which reference or witness monuments are  
 located in the manner following.



There was nothing to tie the North Quarter or the  
 South Quarter Corner to, but with these distances  
 the corners should be relocated.

Dated at Marshall, Minnesota, this 28<sup>th</sup> day of July, 1980.

Lyle E. Moseng  
~~County Surveyor, County Highway Engineer,~~  
 Registered Land Surveyor No. 11943

**183017**  
 OFFICE OF THE REGISTER OF DEEDS  
 County of Yellow Medicine

I hereby certify that the within instrument was filed in this office for  
 record on the 16 day of November A.D., 1983, at 3:15 o'clock P.M.

\_\_\_\_\_  
 Norman J. Opdahl, County Recorder  
 Register of Deeds  
 by Kay Nordahl Deputy

# CERTIFICATE OF LOCATION OF GOVERNMENT CORNER

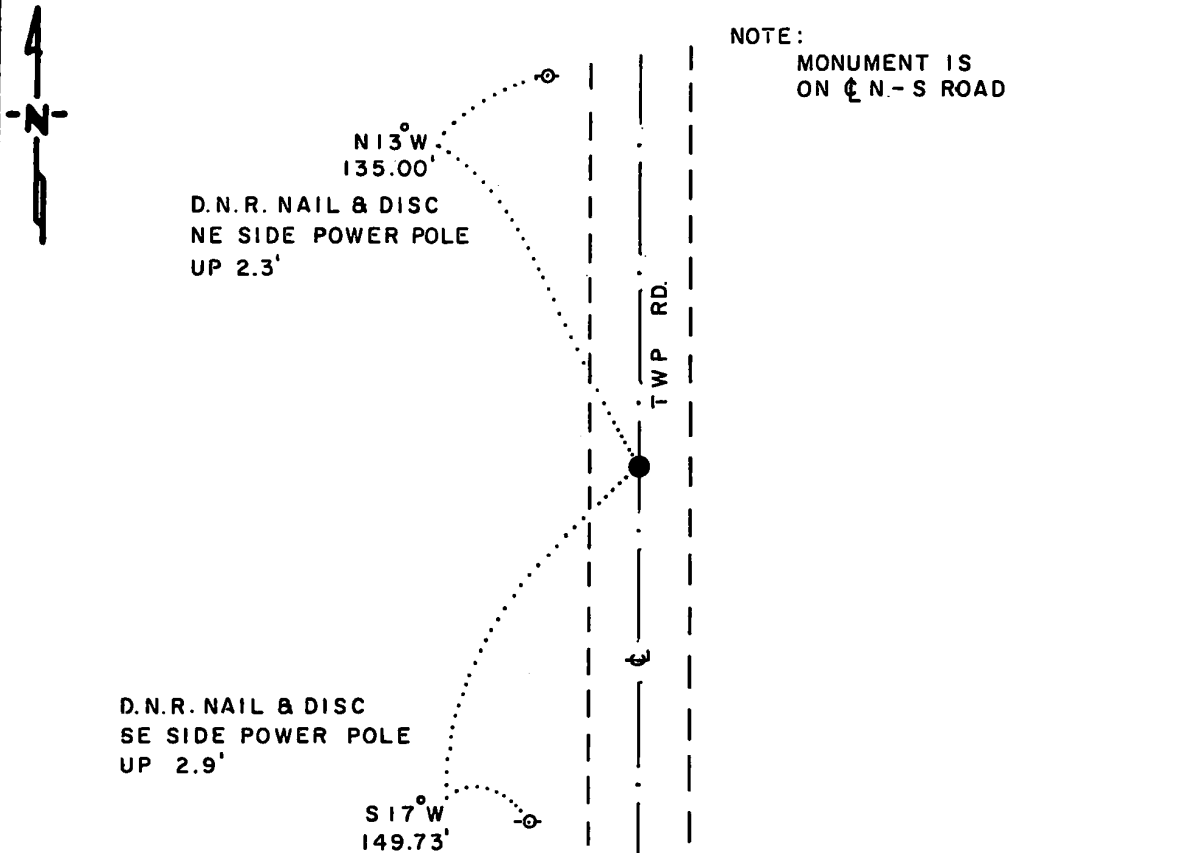
EAST QUARTER Corner of Section 21, Township 114 N., Range 41 W., 5th. P.M.

STATE OF MINNESOTA, County of YELLOW MEDICINE

At the corner location shown on the sketch:

- On \_\_\_\_\_ found a \_\_\_\_\_  
DATE
- left monument as found,  lowered monument,  removed monument (explain)
- On 8-11-87 placed a 1 1/4" x 1 1/4" x 20" PERFORATED STEEL TUBE WITH  
DATE  
ALUMINIUM CAP STAMPED "D.N.R. SURVEY MARKER". DOWN 0.2'

### SKETCH OF REFERENCE TIES



NOTE:  
MONUMENT IS  
ON  $\frac{1}{2}$  N.-S ROAD

BEARINGS OBSERVED WITH COMPASS

Statement of evidence relative to this corner location is on back of page.

J.B.M. 8-18-87  
A-1105

I hereby certify that this document and the data contained herein was prepared by me or under my direct supervision.

Rowell R. Pomeroy Jr. 8-20-87

Registration No. 17005

Land Surveyor,  Professional Engineer

County Surveyor,  County Engineer

### OFFICE OF THE COUNTY RECORDER

County of Yellow Medicine

RECORDED  
GRANTOR   
GRANTEE   
INDEXED

I hereby certify that this document was filed in the Co. Recorders office at 10:05 A.M. on the 24 day of August A.D., 19 87

County Recorder Norman J. Opdahl

By Kay Nordahl, Deputy

DOCUMENT NO. 191468

East Quarter Corner Section 21, Township 114 North, Range 41 West

The DNR Bureau of Engineering contacted the following offices for corner information:

Secretary of State  
Yellow Medicine County Recorder  
Yellow Medicine County Highway Engineer

- 1867 U.S. General Land Office notes in the Secretary of State's Office describes this corner as a set post with charred stake, mound and pits.
- 1901 Surveyor's Record Book B, on page 33, from the County Recorder's Office, contains a township plat showing distances between government corners obtained from a re-monumentation survey by John Norgaard, County Surveyor. No mention of this corner is made, but a distance of 5302 ft. is shown between adjoining section corners.
- 1901 October 10, Surveyor's Record Book, on Page 171, from the County Recorder's Office, contains a survey by John Norgaard, County Surveyor. Norgaard states, "East  $\frac{1}{4}$  post - nothing left." Corner is shown 2650 ft. from adjoining section corners.
- 1911 Surveyor's Record Book, on page 235, from the County Recorder's Office, contains a survey of Section 21 by John Norgaard, County Surveyor. Norgaard states, "East  $\frac{1}{4}$  post - located on line and at equal distance between section corners. Left only a small hub." Corner is shown 2647 ft. from adjoining section corners.
- 1987 March 31, the DNR Bureau of Engineering hired a backhoe operated by Peterson Excavating of Clarkfield to dig for evidence of this corner. Dug an 8 ft. east-west by 12 ft. north-south hole, the center being midway between adjoining section corners. Encountered natural ground down 52", dug down to 65" but found nothing. Scanned a 50 ft. north-south area around center of hole with an electronic metal locator, but found nothing, no east-west occupation.

The DNR Bureau of Engineering considers this corner to be lost and re-established it using lost methods. Lost position was found to measure 2649.62 ft. from adjoining section corners.

# CERTIFICATE OF LOCATION OF GOVERNMENT CORNER

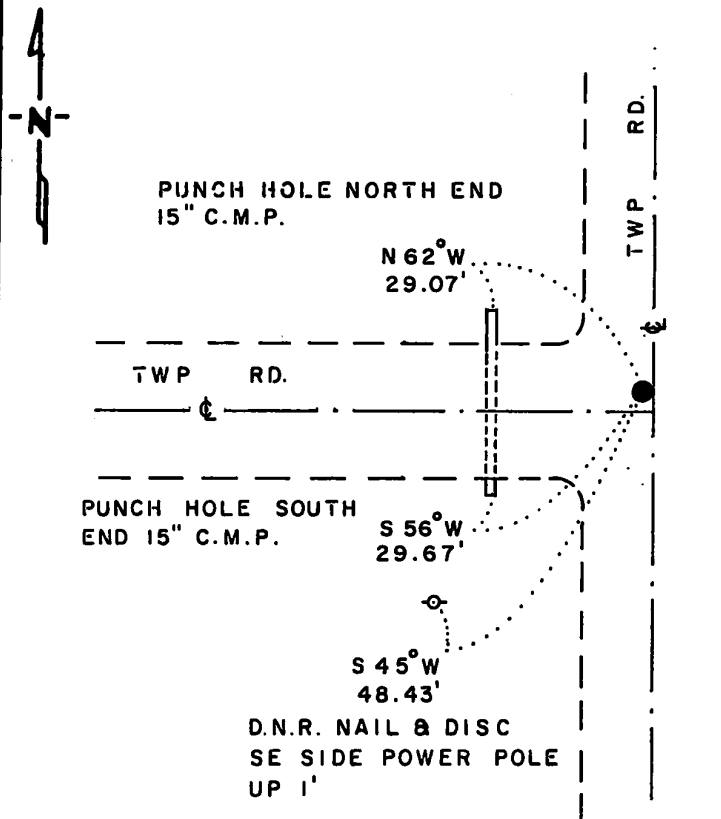
NORTHEAST Corner of Section 21, Township 114 N., Range 41 W., 5th. P.M.

STATE OF MINNESOTA, County of YELLOW MEDICINE

At the corner location shown on the sketch:

- On 4-1-87 found a 1 1/2" x 1 1/2" x 27" ANGLE IRON, DOWN 0.5', OVER A  
<sup>DATE</sup>  
6" x 6" x 24" CUT GRANITE STONE, DOWN 30"  
 left monument as found,  lowered monument,  removed monument (explain)
- On 4-1-87 placed a 1 1/4" x 1 1/4" x 20" PERFORATED STEEL TUBE WITH  
<sup>DATE</sup>  
ALUMINIUM CAP STAMPED "D.N.R. SURVEY MARKER", DOWN 0.6', OVER STONE

### SKETCH OF REFERENCE TIES



NOTE:  
 MONUMENT IS  
 2' WEST OF  $\epsilon$  N-S ROAD  
 3' NORTH OF  $\epsilon$  ROAD WEST

BEARINGS OBSERVED WITH COMPASS

Statement of evidence relative to this corner location is on back of page.

J.B.M. 8-4-87  
 A-1106

RECORDED  
 GRANTED  
 GRANTED  
 INDEXED

I hereby certify that this document and the data contained herein was prepared by me or under my direct supervision.

Lowell R. Pomeroy Jr. 8-20-87  
SIGNATURE DATE

Registration No. 17005  
 Land Surveyor,  Professional Engineer  
 County Surveyor,  County Engineer

**OFFICE OF THE COUNTY RECORDER**  
 County of Yellow Medicine

I hereby certify that this document was filed in the Co. Recorders office at 10:00 A.M. on the 24 day of August A.D., 19 87

County Recorder Norman J. Opdahl

By Kay Nordahl, Deputy

DOCUMENT NO. 191467

Northeast Corner Section 21, Township 114 North, Range 41 West

The DNR Bureau of Engineering contacted the following offices for corner information:

Secretary of State  
Yellow Medicine County Recorder  
Yellow Medicine County Highway Engineer

- 1867 U.S. General Land Office notes in the Secretary of State's Office describes this corner as a set post.
- 1884 Surveyor's Record Book, on Page 20, from the County Recorder's Office, contains a survey by Jonah Peterman, County Surveyor. Survey commences at this corner, but does not describe it.
- 1901 Surveyor's Record Book B, on page 163, from the County Recorder's Office, contains a collection of what was found at government section corners by John Norgaard, County Surveyor, in a township re-monumentation survey. Norgaard states this corner was "located with distance as I took 5 years ago when the government corner was plain 5302 feet north of the southeast corner Section 21 and 2 feet east of road where the government stake used to be". A 6" by 6" by 24" jasper granite stone was set at this location, top of monument level with ground.
- 1901 October 10, Surveyor's Record Book, on Page 171, from the County Recorder's Office, contains a survey of Section 21 by John Norgaard, County Surveyor. Norgaard states at all section corners found stone monument set by himself in re-survey. Corner is shown:  
2650 ft. from the east quarter corner Section 21  
5300 ft. from the southeast corner Section 21
- 1911 Surveyor's Record Book, on page 235, from the County Recorder's Office, contains a survey of Section 21 by John Norgaard, County Surveyor. Norgaard states, "at all section corners found the jasper stone monuments set by me at the re-survey of the county." Corner is shown:  
2647.0 ft. from the east quarter corner of Section 21  
5294.0 ft. from the southeast corner of Section 21
- 1928 An addition to the above mentioned page 235 of Surveyor's Record Book shows John Norgaard, County Surveyor, setting a granite boulder 20 ft. east of corner.
- 1935 August 6, on Page 309 of a book of field notes obtained from DNR Division of Waters, the following is stated:  
Dug at the intersection of a north-south road and road west. Found a 6" by 6" by 24" stone monument down 4" in west car track of north-south road. Three ties were taken. On Page 234 of this field book a distance of 5299.85 ft. from this corner to the northeast corner of Section 28 is recorded.
- No Date A tie page of field notes, from the County Highway Engineer's Office, shows five ties to this corner, but no mention of a monument is made.
- 1987 March 31, the DNR Bureau of Engineering hired a backhoe operated by Peterson Excavating of Clarkfield to dig for evidence of this corner. Dug a 4 ft. east-west by 8 ft. north-south by 3 ft. deep hole, the center at the intersection of roads north-south and west. Found a 1½" by 1½" by 27" angle iron down 0.5 ft., 3 ft. west of centerline north-south road and 4.5 ft. north of centerline road west. Found a 6" by 6" by 24" cut granite stone with very old wood on its north and south side down 30" at natural ground. Stone is 2 ft. west of centerline north-south road and 3 ft. north of centerline road west. Placed the found angle on the north side of stone flush with its top. Checked for record ties but found nothing. Stone measures 5299.23 ft. from the northeast corner Section 28.

Analysis of the available information led the DNR Bureau of Engineering to conclude that the found 6" by 6" by 24" stone marks the location of the corner, per John Norgaard's re-survey.

# CERTIFICATE OF LOCATION OF GOVERNMENT CORNER

# 6 MEANDER Corner of Section 22, Township 114 N., Range 41 W., 5th. P.M.

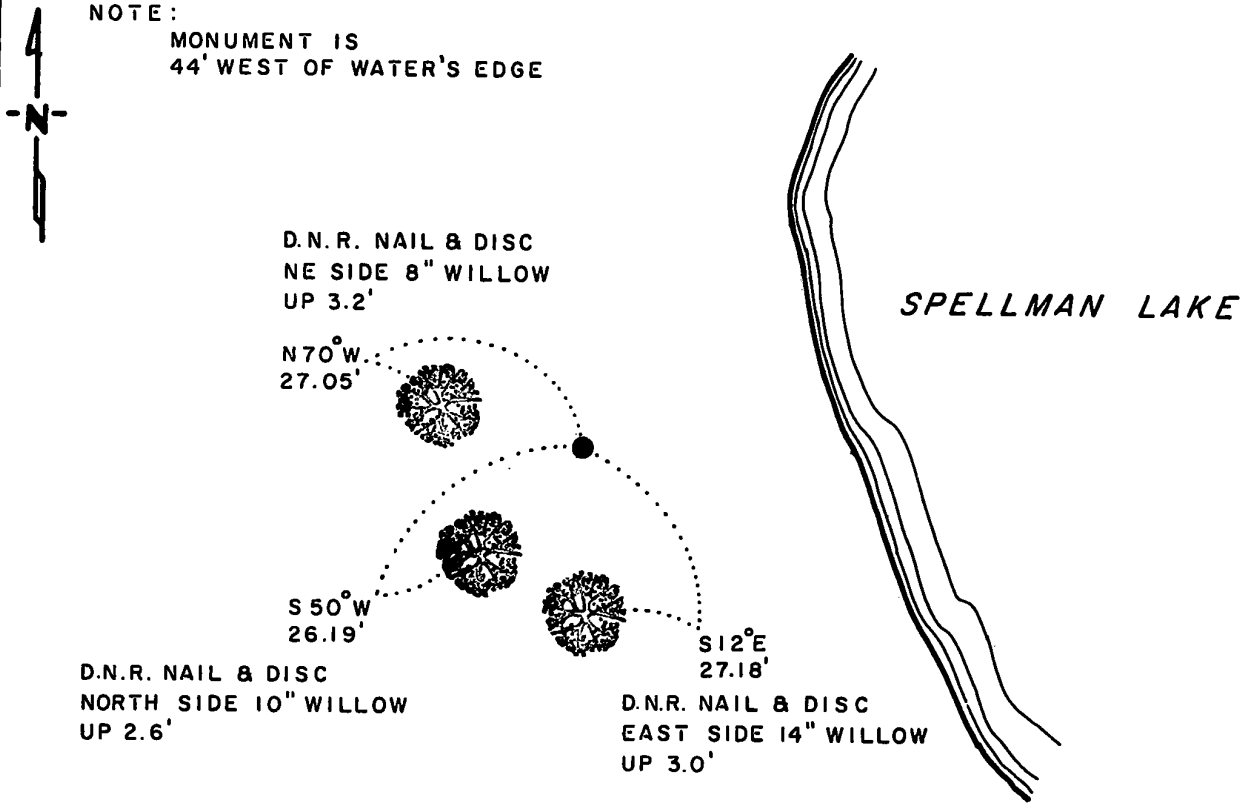
STATE OF MINNESOTA, County of YELLOW MEDICINE

At the corner location shown on the sketch:

- On \_\_\_\_\_ found a \_\_\_\_\_  
DATE
- left monument as found,  lowered monument,  removed monument (explain)
- On 8-11-87 placed a 1 1/4" x 1 1/4" x 20" PERFORATED STEEL TUBE WITH ALUMINIUM CAP STAMPED "D.N.R. SURVEY MARKER", UP 0.2'  
DATE

### SKETCH OF REFERENCE TIES

NOTE:  
MONUMENT IS  
44' WEST OF WATER'S EDGE



### BEARINGS OBSERVED WITH COMPASS

Statement of evidence relative to this corner location is on back of page.

J.B.M. 8-18-87  
A-1105

I hereby certify that this document and the data contained herein was prepared by me or under my direct supervision.

Lowell P. Rasmussen 8-20-87  
SURVEYOR DATE

Registration No. 17005  
 Land Surveyor,  Professional Engineer  
 County Surveyor,  County Engineer

OFFICE OF THE COUNTY RECORDER  
County of Yellow Medicine

I hereby certify that this document was filed in the Co. Recorders office at 10:30 A.M. on the 24 day of August A.D., 19 87

County Recorder Norman J. Opdahl

By Kay Nerdahl, Deputy

DOCUMENT NO. 191473

RECORDED  
GRANTOR  
GRANTEE  
INDEXED



**Meander Corner #6 of Section 22, Township 114 North, Range 41 West**

The DNR Bureau of Engineering contacted the following offices for corner information:

Secretary of State  
Yellow Medicine County Recorder  
Yellow Medicine County Highway Engineer

- 1867 U.S. General Land Office notes in the Secretary of State's Office describes this corner as a set post. Government notes state the north line of Section 22 was run on a true line as adjoining section corner posts could be seen from one point. This meander corner measures 32.50 chains (2145.00 ft.) from the northwest corner of Section 22.
- 1884 Surveyor's Record Book, on Page 20, from the County Recorder's Office contains a survey by Jonah Peterman, County Surveyor. Survey shows a distance of 32.85 chains (2168.10 ft.) from the northwest corner of Section 22, east to a lake. No mention of this corner is made.
- 1987 April, the DNR Bureau of Engineering conducted a search for this corner, but found nothing. Located the edge of the lake in the corner area and intersected it with the north line of Section 22. This gave a distance of 2187.7 ft. from the northwest corner of Section 22.

The DNR Bureau of Engineering considers this corner to be lost and re-established it using lost methods. Lost position measures 2170.56 ft. from the northwest corner of Section 22.

# CERTIFICATE OF LOCATION OF GOVERNMENT CORNER

# 5 MEANDER Corner of Section 22, Township 114 N, Range 41 W, 5<sup>th</sup> P.M.

STATE OF MINNESOTA, County of YELLOW MEDICINE

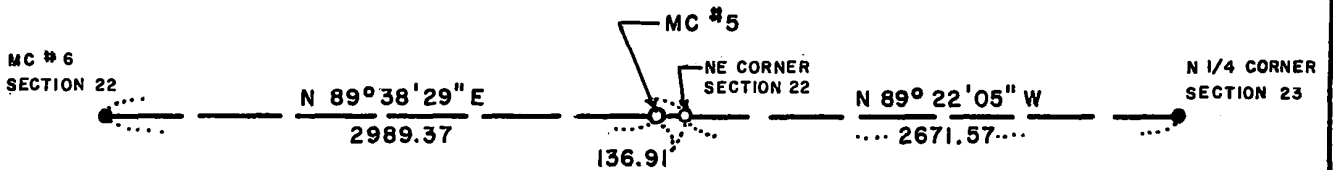
At the corner location shown on the sketch:

- On \_\_\_\_\_ found a \_\_\_\_\_  
DATE
- left monument as found,  lowered monument,  removed monument (explain)
- On \_\_\_\_\_ placed a \_\_\_\_\_  
DATE

## SKETCH OF REFERENCE TIES



NOTE: NO MONUMENT SET  
ACCESS TO CORNER DENIED BY LANDOWNER



- NO MONUMENT SET
- MONUMENT INPLACE

BEARINGS ARE ASSUMED ORIENTATION

Statement of evidence relative to this corner location is on back of page.

LRP 8-19-87  
A-1105

RECORDED  
GRANTOR ✓  
GRANTEE ✓  
INDEXED ✓

I hereby certify that this document and the data contained herein was prepared by me or under my direct supervision.

Lowell R. Pomeroy 8-20-87  
SIGNATURE DATE

Registration No. 17005  
 Land Surveyor,  Professional Engineer  
 County Surveyor,  County Engineer

OFFICE OF THE COUNTY RECORDER  
County of Yellow Medicine

I hereby certify that this document was filed in the Co. Recorders office at 10:25 A.M. on the 24 day of August A.D., 19 87

County Recorder Norman J. Opdahl

By Kay Nordahl, Deputy

DOCUMENT NO. 191472

Meander Corner #5 of Section 22, Township 114 North, Range 41 West

The DNR Bureau of Engineering contacted the following offices for corner information:

Secretary of State  
Yellow Medicine County Recorder  
Yellow Medicine County Highway Engineer

- 1867 U.S. General Land Office notes in the Secretary of State's Office describes this corner as a set post. Government notes state the north line of Section 22 was run on a true line as adjoining section corner posts could be seen from one point.
- 1987 April, the DNR Bureau of Engineering conducted a search for the corner but found nothing. Located the top of the lake bank and intersected it with the north line of Section 22. This gave a distance of 135.81 ft. from the northeast corner of Section 22, GLO had 135.30 ft. from this corner to the northeast corner of Section 22.

The DNR Bureau of Engineering considers this corner to be lost and re-established it using lost methods. Lost position measures 136.91 ft. from the northeast corner of Section 22.

# CERTIFICATE OF LOCATION OF GOVERNMENT CORNER

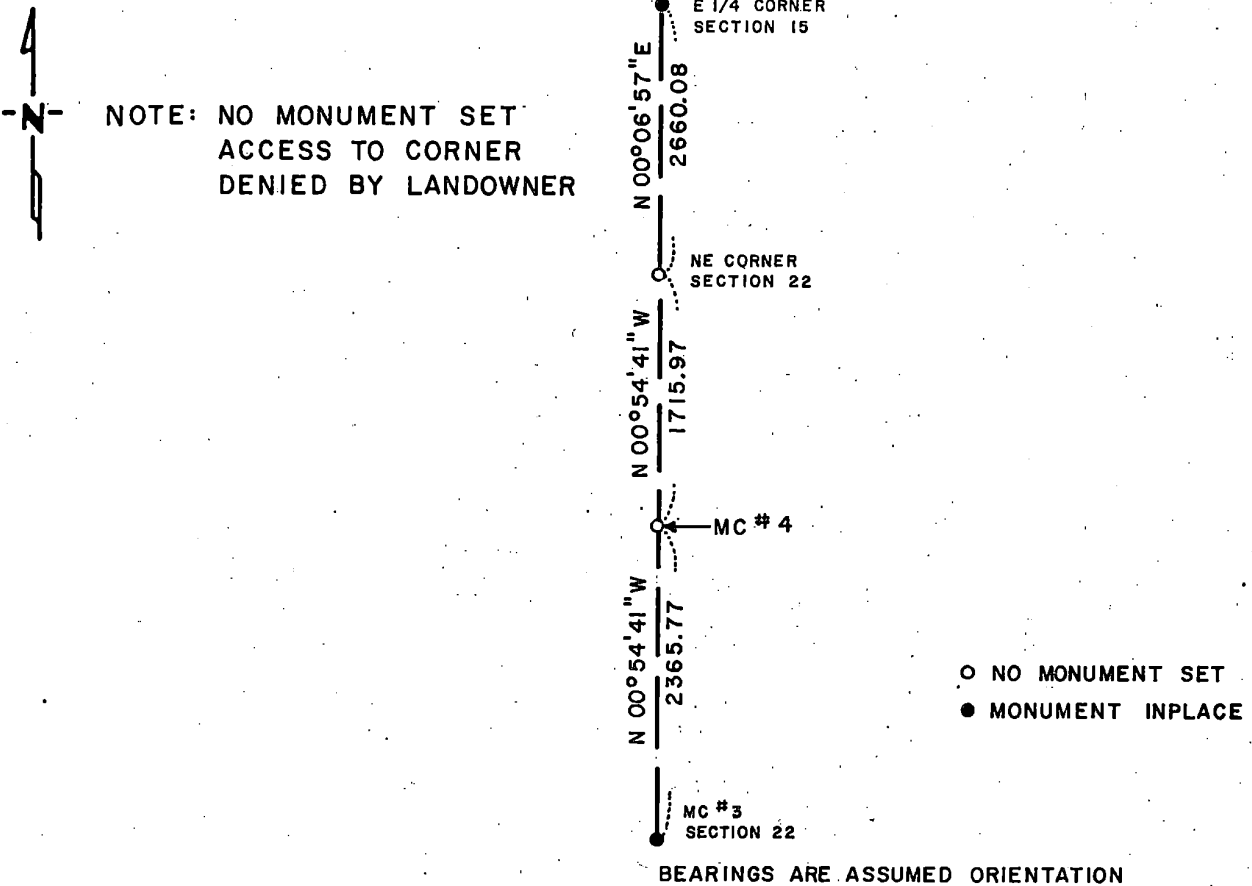
**# 4 MEANDER** Corner of Section 22, Township 114 N., Range 41 W., 5<sup>th</sup> P.M.

STATE OF MINNESOTA, County of YELLOW MEDICINE

At the corner location shown on the sketch:

- On \_\_\_\_\_ found a \_\_\_\_\_  
DATE
- left monument as found,  lowered monument,  removed monument (explain)
- On \_\_\_\_\_ placed a \_\_\_\_\_  
DATE

### SKETCH OF REFERENCE TIES



Statement of evidence relative to this corner location is on back of page.

LRP 8-20-87  
A-1105

RECORDED  
GRANTOR  
GRANTEE  
INDEXED

I hereby certify that this document and the data contained herein was prepared by me or under my direct supervision.

Lowell B. Pomeroy 8-20-87  
SIGNATURE DATE

- Registration No. 17005
- Land Surveyor,  Professional Engineer
  - County Surveyor,  County Engineer

OFFICE OF THE COUNTY RECORDER  
County of Yellow Medicine

I hereby certify that this document was filed in the Co. Recorders office at 10:20 A.M. on the 24 day of August A.D., 19 87

County Recorder Norman J. Opdahl  
By Kay Nordahl, Deputy

DOCUMENT NO. 191471

Meander Corner #4 of Section 22, Township 114 North, Range 41 West

The DNR Bureau of Engineering contacted the following offices for corner information:

Secretary of State  
Yellow Medicine County Recorder  
Yellow Medicine County Highway Engineer

- 1867 U.S. General Land Office notes in the Secretary of State's Office describes this corner as a set post with mound and charcoal. Government notes show corner 25.80 chains (1702.80 ft.) south of the northeast corner of Section 22.
- 1901 Surveyor's Record Book B, on page 163, from the County Recorder's Office, contains a collection of what was found at government section corners by John Norgaard, County Surveyor, in a township re-monumentation survey. This corner was found and used to proportion in other government corners. No mention is made about perpetuating this corner position, but it is shown 1712 ft. from the northeast corner of Section 22.
- 1987 April, the DNR Bureau of Engineering conducted a search for the corner but found nothing. Located the current water's edge of the lake and intersected it with the east line of Section 22. This gave a distance of 1725 ft. from the northeast corner of Section 22.

The DNR Bureau of Engineering considers this corner to be lost and re-established it using lost methods. Lost position measures 1715.97 ft. from the northeast corner of Section 22.

# CERTIFICATE OF LOCATION OF GOVERNMENT CORNER

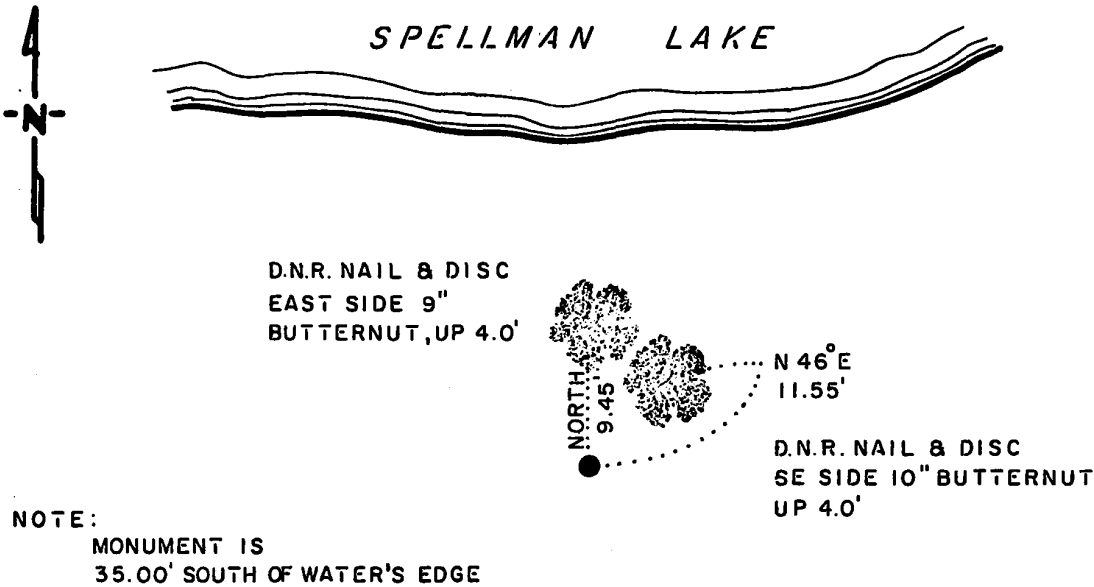
#3 MEANDER Corner of Section 22, Township 114 N., Range 41 W., 5th. P.M.

STATE OF MINNESOTA, County of YELLOW MEDICINE

At the corner location shown on the sketch:

- On \_\_\_\_\_ found a \_\_\_\_\_  
DATE
- left monument as found,  lowered monument,  removed monument (explain)
- On 8-12-87 placed a 1 1/4" x 1 1/4" x 20" PERFORATED STEEL TUBE WITH  
DATE  
ALUMINUM CAP STAMPED "D.N.R. SURVEY MARKER", UP 0.2'

### SKETCH OF REFERENCE TIES



### BEARINGS OBSERVED WITH COMPASS

Statement of evidence relative to this corner location is on back of page.

J.B.M. 8-18-87  
A-1105

RECORDED  
GRANTED  
GRANTED  
INDEXED

I hereby certify that this document and the data contained herein was prepared by me or under my direct supervision.

Lowell R. Pomeroy 8-20-87

Registration No. 17005

- Land Surveyor,  Professional Engineer
- County Surveyor,  County Engineer

### OFFICE OF THE COUNTY RECORDER

County of Yellow Medicine

I hereby certify that this document was filed in the Co. Recorders office at 10:15 A.M. on the 24 day of August A.D., 19 87

County Recorder Norman J. Opdahl

By Kay Nordahl, Deputy

DOCUMENT NO. 191470

Meander Corner #3 of Section 22, Township 114 North, Range 41 West

The DNR Bureau of Engineering contacted the following offices for corner information:

Secretary of State  
Yellow Medicine County Recorder  
Yellow Medicine County Highway Engineer

- 1867 U.S. General Land Office notes in the Secretary of State's Office describes this corner as a set post with a 4" by 8" limestone in mound and pits.
- 1987 April, the DNR Bureau of Engineering conducted a search for the corner but found nothing. The corner area has recently been filled in with material that includes numerous large stones. Located the current toe of ice ridge around the lake and intersected it with the east line of Section 22. This gave a distance of 1259.54 ft. from the southeast corner of Section 22, GLO had 1229.58 ft. to this corner.

The DNR Bureau of Engineering considers this corner to be lost and re-established it using lost methods. Lost position measures 1239.09 ft. from the southeast corner of Section 22.

# CERTIFICATE OF LOCATION OF GOVERNMENT CORNER

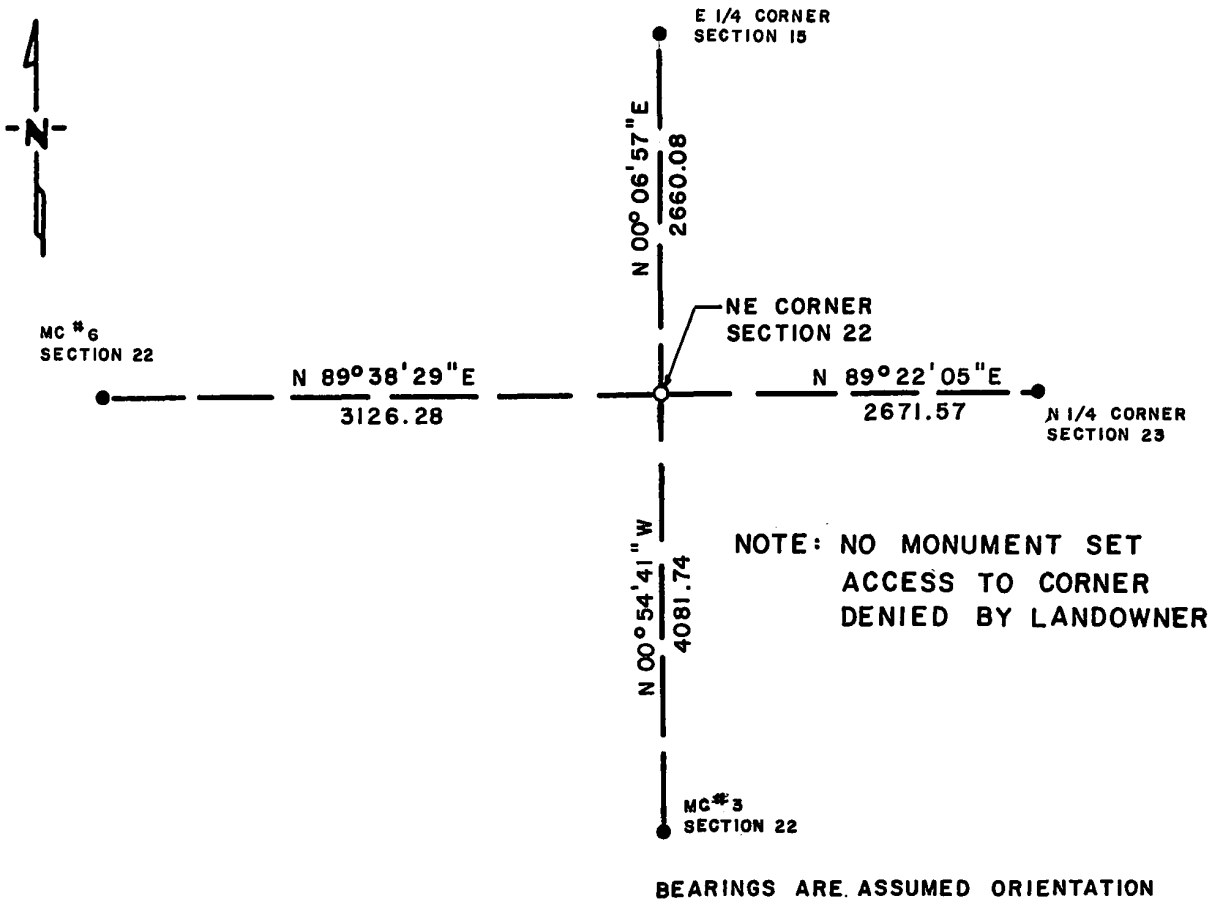
NORTHEAST Corner of Section 22, Township 114 N., Range 41 W., 5<sup>th</sup> P.M.

STATE OF MINNESOTA, County of YELLOW MEDICINE

At the corner location shown on the sketch:

- On \_\_\_\_\_ found a \_\_\_\_\_  
DATE
- left monument as found,  lowered monument,  removed monument (explain)
- On \_\_\_\_\_ placed a \_\_\_\_\_  
DATE

### SKETCH OF REFERENCE TIES



NOTE: NO MONUMENT SET  
ACCESS TO CORNER  
DENIED BY LANDOWNER

Statement of evidence relative to this corner location is on back of page.

LRP 8-19-87  
A-1105

RECORDED  
GRANTOR  
GRANTEE  
INDEXED

I hereby certify that this document and the data contained herein was prepared by me or under my direct supervision.

*Lowell R. Pomeroy* 8-20-87  
SIGNATURE DATE

Registration No. 17005

- Land Surveyor,  Professional Engineer
- County Surveyor,  County Engineer

### OFFICE OF THE COUNTY RECORDER

County of Yellow Medicine

I hereby certify that this document was filed in the Co. Recorders office at 10:10 A.M. on the 24 day of August A.D., 19 87

County Recorder Norman J. Opdahl

By Kay Nordahl, Deputy

DOCUMENT NO. 191469



Northeast Corner Section 22, Township 114 North, Range 41 West

The DNR Bureau of Engineering contacted the following offices for corner information:

Secretary of State  
Yellow Medicine County Recorder  
Yellow Medicine County Highway Engineer

- 1867 U.S. General Land Office notes in the Secretary of State's Office describes this corner as a set post with charred stake, mound and pits.
- 1891 Surveyor's Record Book, on page 104, from the County Recorder's Office, contains a survey by Jonah Peterman, County Surveyor. Survey states the word "Bogus" at this corner.
- 1901 Surveyor's Record Book B, on page 163, from the County Recorder's Office, contains a collection of what was found at government section corners by John Norgaard, County Surveyor, in a township re-monumentation survey. Norgaard states this corner was "located at equal proportional distances from the northeast corner Section 10, the meander corner on the north side of lake between Sections 22 and 23 and 5300 feet west of the northeast corner Section 23". A 6" by 6" by 24" jasper granite stone was set at this location, top of monument level with ground. Page 33 of Surveyor's Record Book B is a township plat showing distances between government corners obtained from Norgaard's re-monumentation survey. This corner is also shown:  
1712 ft. from meander corner between Sections 22 and 23  
5306 ft. from the northeast corner Section 15
- 1987 April, the DNR Bureau of Engineering conducted a search for this corner and found it to be in a cultivated field. No metal attraction was obtained, no occupation lines. Computed a lost position for this corner using the following corners resulting in the corresponding distances:  
5296.83 ft. from the northeast corner Section 21  
5343.14 ft. from the northeast corner Section 23  
5320.83 ft. from the northeast corner Section 27  
5320.17 ft. from the northeast corner Section 15  
This lost position was then checked against GLO distances to feature calls with the following results:  
1725.01 ft. to the water's edge of a lake  
to the south, GLO to MC south 1702.8 ft.  
135.81 ft. to the top of lake bank to the west  
GLO to MC west 135.30 ft.

Analysis of the available information led the DNR Bureau of Engineering to conclude that the lost position should be used for the location of the corner, based on procedure and its position relative to GLO feature calls. Norgaard's method of establishing this corner is somewhat questionable. No evidence of his stone was found.

# CERTIFICATE OF LOCATION OF GOVERNMENT CORNER

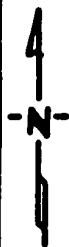
NORTH QUARTER Corner of Section 23, Township 114 N., Range 41 W., 5th. P.M.

STATE OF MINNESOTA, County of YELLOW MEDICINE

At the corner location shown on the sketch:

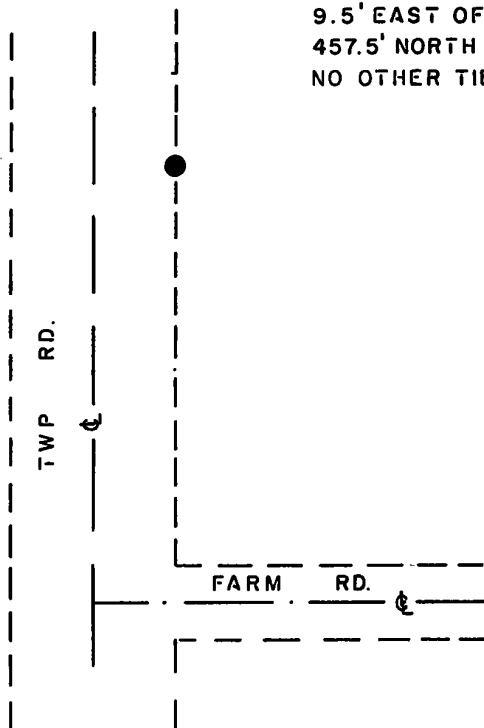
- On \_\_\_\_\_ found a \_\_\_\_\_  
DATE
- left monument as found,  lowered monument,  removed monument (explain)
- On 8-12-87 placed a 1 1/4" x 1 1/4" x 20" PERFORATED STEEL TUBE WITH  
DATE  
ALUMINUM CAP STAMPED "D.N.R SURVEY MARKER" FLUSH

### SKETCH OF REFERENCE TIES



NOTE:

MONUMENT IS  
9.5' EAST OF  $\text{\textcircled{C}}$  N - S ROAD  
457.5' NORTH OF  $\text{\textcircled{C}}$  ROAD EAST  
NO OTHER TIES AVAILABLE



Statement of evidence relative to this corner location is on back of page.

J.B.M. 8-18-87  
A-1105

RECORDED  
GRANTOR ✓  
GRANTEE ✓  
INDEXED

I hereby certify that this document and the data contained herein was prepared by me or under my direct supervision.

Lawell R. Pomeroy 8-20-87  
Registration No. 17005

- Land Surveyor,  Professional Engineer
- County Surveyor,  County Engineer

OFFICE OF THE COUNTY RECORDER  
County of Yellow Medicine

I hereby certify that this document was filed in the Co. Recorders office at 10:40 A.M. on the 24 day of August A.D. 1987  
County Recorder Norman J. Opdahl

By Kay Nordahl, Deputy  
DOCUMENT NO. 191475

North Quarter Corner Section 23, Township 114 North, Range 41 West

The DNR Bureau of Engineering contacted the following offices for corner information:

Secretary of State  
Yellow Medicine County Recorder  
Yellow Medicine County Highway Engineer

- 1867 U.S. General Land Office notes in the Secretary of State's Office describes this corner as a set post with charred stake, mound and pits. Government notes also show a 2" diameter pebble marked 1/4 S was set at the corner. The north line of Section 23 was run on a true line as adjoining section corner posts could be seen from one point.
- 1891 Surveyor's Record Book, on page 104, from the County Recorder's Office, contains a survey by Jonah Peterman, County Surveyor. Survey states all of the quarter posts in Section 14 were found (this corner being the south quarter). The word "Bogus" is shown by this corner.
- 1901 Surveyor's Record Book B, on page 33, from the County Recorder's Office, contains a township plat showing distances between government corners obtained from a re-monumentation survey by John Norgaard, County Surveyor. No mention of this corner is made, but a distance of 5300 ft. is shown between adjoining section corners.
- 1987 July, the DNR Bureau of Engineering conducted a search for this corner, centering on the lost position. Lost position falls on the east slope of a north-south road in an area that has been cut for the road. There is also a buried telephone cable less than a foot west of the corner area. Checked a 50 ft. north-south by 60 ft. east-west area with an electronic metal locator but found nothing.

The DNR Bureau of Engineering considers this corner to be lost and re-established it using lost methods. Lost position measures 2671.57 ft. from adjoining section corners.

# CERTIFICATE OF LOCATION OF GOVERNMENT CORNER

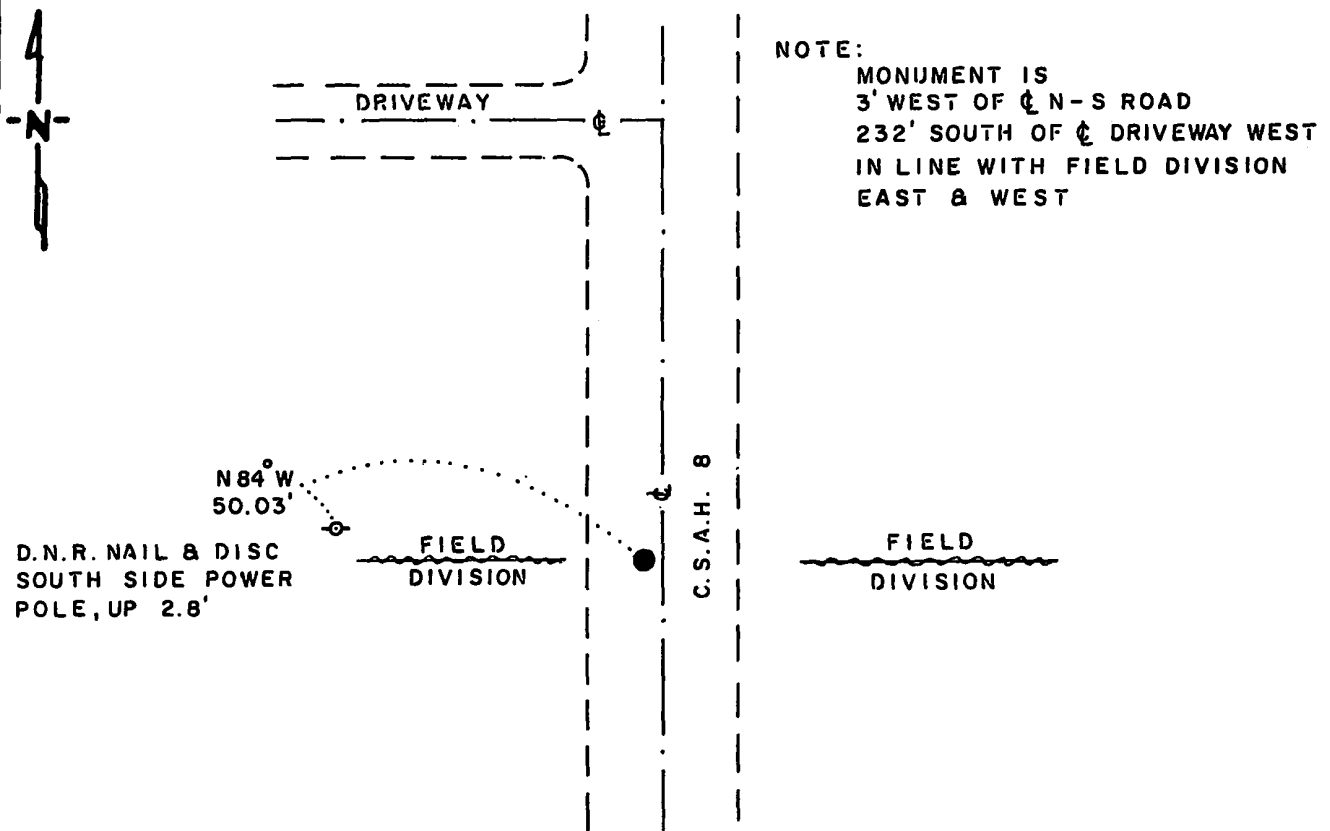
NORTHEAST Corner of Section 23, Township 114 N., Range 41 W., 5th. P.M.

STATE OF MINNESOTA, County of YELLOW MEDICINE

At the corner location shown on the sketch:

- On 7-21-87 found a 1/2" x 18" SQUARE IRON ROD, DOWN 0.5, OVER A  
1/2" x 18" IRON ROD, DOWN 2'  
 left monument as found,  lowered monument,  removed monument (explain)
- On 7-21-87 placed a 1 1/4" x 1 1/4" x 20" PERFORATED STEEL TUBE WITH  
ALUMINUM CAP STAMPED "D.N.R. SURVEY MARKER", FLUSH, OVER IRON ROD

## SKETCH OF REFERENCE TIES



### BEARINGS OBSERVED WITH COMPASS

Statement of evidence relative to this corner location is on back of page.

J.R.M. 8-4-87  
 A-1105

RECORDED  
 GRANTOR  
 GRANTEE  
 INDEXED

I hereby certify that this document and the data contained herein was prepared by me or under my direct supervision.

Lowell B. Pomeroy 8-20-87  
SIGNATURE DATE

Registration No. 17005

- Land Surveyor,  Professional Engineer
- County Surveyor,  County Engineer

OFFICE OF THE COUNTY RECORDER  
 County of Yellow Medicine

I hereby certify that this document was filed in the Co. Recorders office at 10:35 A.M. on the 24 day of August A.D., 19 87

County Recorder Norman J. Opdahl

By Kay Nordahl, Deputy  
 DOCUMENT NO. 191474

Northeast Corner Section 23, Township 114 North, Range 41 West

The DNR Bureau of Engineering contacted the following offices for corner information:

Secretary of State  
Yellow Medicine County Recorder  
Yellow Medicine County Highway Engineer

- 1867 U.S. General Land Office notes in the Secretary of State's Office describes this corner as a set post with charred stake, mound and pits.
- 1901 Surveyor's Record Book B, on page 163, from the County Recorder's Office, contains a collection of what was found at government section corners by John Norgaard, County Surveyor, in a township re-monumentation survey. Norgaard states this corner was a found stake in the government mound. A 6" by 6" by 24" jasper granite stone was set at this location, its top level with the ground. Page 33 of Surveyor's Record Book B is a township plat showing distances between government corners obtained from Norgaard's re-monumentation survey. This corner is shown 5300 ft. from the northeast corner of Section 22.
- 1958 July 7, Page 3 of a book of field notes, from the County Highway Engineer's Office shows three bricks with oak hub on top were located. Placed an iron pin and took three ties. Corner was retied in October.
- 1987 April, the DNR Bureau of Engineering found a ½" by 18" square iron rod down 0.5 ft. Monument is 3 ft. west of centerline of a north-south road and on a vague east-west field division. July 21, the DNR Bureau of Engineering hired a backhoe operated by Peterson Excavating of Clarkfield to dig for evidence of this corner. Dug a 10 ft. north-south by 10 ft. east-west hole, the center being at the intersection of the centerline of the north-south road and east-west field division. Found a ½" by 18" iron rod down 24" under above mentioned square iron rod. Also found a brick and pieces of old wood on south side of lower iron. Continued excavation down to 54" but found nothing else. Replaced square iron rod as found and set a DNR Survey Marker over it. Searched for, but did not find any record ties. Square iron rod was found to be:  
5343.14 ft. from the northeast corner of Section 22  
2643.91 ft. from the east quarter corner of Section 23

Analysis of the available information led the DNR Bureau of Engineering to conclude that the found square iron rod marks the location of the corner. Due to the ties recorded by the County Highway Engineer, it is believed the corner was located, removed by road construction and then reset.

# CERTIFICATE OF LOCATION OF GOVERNMENT CORNER

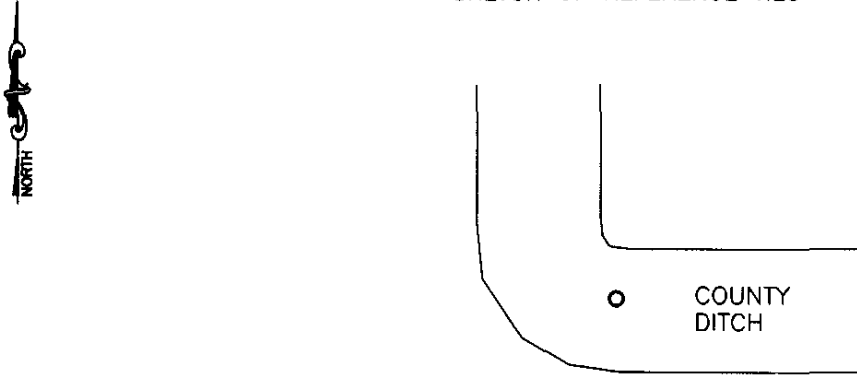
NORTHEAST Corner of Section 24, Township 114, Range 41, 5TH P.M.

STATE OF MINNESOTA, County of YELLOW MEDICINE

At the corner location shown on the sketch:

- On \_\_\_\_\_ found a \_\_\_\_\_  
DATE
- left monument as found,  lowered monument,  removed monument (explain)
- On 05-04-2007 placed a NOTHING (SEE BACK)  
DATE

### SKETCH OF REFERENCE TIES



Minnesota State Plane Coordinate  
System Yellow Medicine County Datum  
NAD83 (1996)

N: 148224.129  
E: 545011.892

Statement of evidence relative to this corner location is on back of page.

I hereby certify that this document and the data contained herein was prepared by me or under my direct supervision.

[Signature] Feb. 19, 2008  
SIGNATURE DATE

Registration No. 43844

- Land Surveyor,  Professional Engineer
- County Surveyor,  County Engineer

OFFICE OF THE COUNTY RECORDER  
County of \_\_\_\_\_

I hereby certify that this document was filed in the Co. Recorders office at \_\_\_\_\_ .M on the \_\_\_\_\_ day of \_\_\_\_\_ A.D. 20 \_\_\_\_\_

County Recorder \_\_\_\_\_

By \_\_\_\_\_, Deputy

DOCUMENT NO. \_\_\_\_\_

## Statement of Evidence

In 1858, W. J. Neely did the original survey of the township lines.

In 1912 John Norgaard established 2754 feet west of the South Quarter corner of Section 18-114-41.

On May 4, 2007, Bueltel-Moseng Land surveying established the corner using the recorded distance from the NW corner of 18-114-40 (5302'), and the distance west from the SE corner of 18-114-40 (5456'). The corner fell in the county drainage ditch.

N/C Bueltel-Moseng Land Surveying  
PO Box 32  
Marshall MN 56258

Doc# 245325 Fee: \$0.00 2 Pages

Office of County Recorder  
Yellow Medicine County, Minnesota  
I hereby certify that the within instrument  
was filed on April 8, 2008 at 11:40 AM

Kay Zempel, Yellow Medicine County Recorder

By  Deputy

# CERTIFICATE OF LOCATION OF GOVERNMENT CORNER

EAST QUARTER Corner of Section 25, Township 114, Range 41, 5TH P.M.

STATE OF MINNESOTA, County of YELLOW MEDICINE

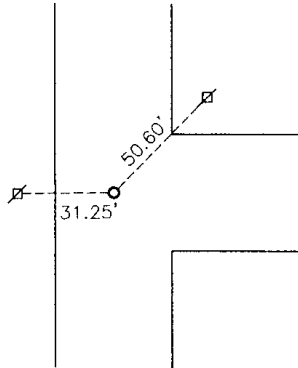
At the corner location shown on the sketch:

On 02-02-2006 found a 5/8" IRON

left monument as found,  lowered monument,  removed monument (explain)

On \_\_\_\_\_ placed a \_\_\_\_\_

### SKETCH OF REFERENCE TIES



PK nail in power pole NE 50.60'  
PK nail in power pole W 31.25'

Minnesota State Plane Coordinate  
System Yellow Medicine County Datum  
NAD83 (1996)  
N: 140287.992  
E: 545049.948

Statement of evidence relative to this corner location is on back of page.

I hereby certify that this document and the data contained herein was prepared by me or under my direct supervision.

James B. Smith 2/13/06  
SIGNATURE DATE

Registration No. 43844

Land Surveyor,  Professional Engineer  
 County Surveyor,  County Engineer

OFFICE OF THE COUNTY RECORDER

County of \_\_\_\_\_

I hereby certify that this document was filed in the Co. Recorders office at \_\_\_\_\_ M on the \_\_\_\_\_ day of \_\_\_\_\_ A.D. 20 \_\_\_\_\_

County Recorder \_\_\_\_\_

By \_\_\_\_\_, Deputy

DOCUMENT NO. \_\_\_\_\_



Statement of Evidence

In 1858, W. J. Neely did the original survey of the township lines.

On February 2, 2006 Bueltel-Moseng Land Surveying found a  $\frac{3}{8}$ " iron that had been set by the county. The Yellow Medicine County Highway Department informed us that when the bridge to the north was rebuilt the corners to the north and south of the bridge were found or established. We left the iron as found and placed a seal with #43844 on it.

Doc# 240397 Fee: \$0.00 2 Pages

Office of County Recorder  
Yellow Medicine County, Minnesota  
I hereby certify that the within instrument  
was filed on April 11, 2006 at 09:55 AM

Kay Zempel, Yellow Medicine County Recorder

BY Keith Rohlik Deputy

N/C  
Bueltel-Moseng Land Surveying  
P.O. Box 32  
Marshall, MN 56258

# CERTIFICATE OF LOCATION OF GOVERNMENT CORNER

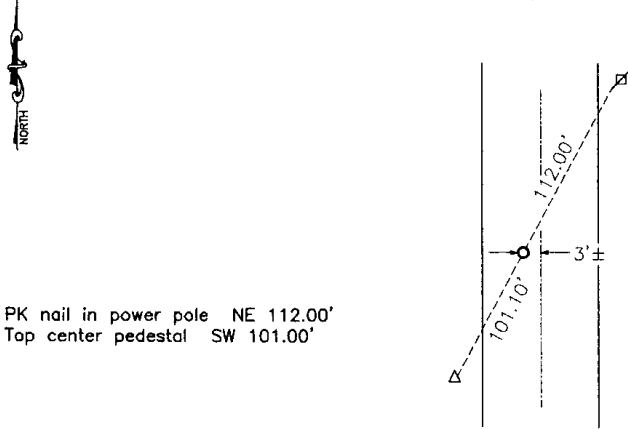
NORTHEAST Corner of Section 25, Township 114, Range 41, 5TH P.M.

STATE OF MINNESOTA, County of YELLOW MEDICINE

At the corner location shown on the sketch:

- On 01-27-2006 found a 5/8" SOLID IRON  
DATE
- left monument as found,  lowered monument,  removed monument (explain)
- On 01-27-2006 placed a 5/8" IRON W/ SEAL #43844  
DATE

### SKETCH OF REFERENCE TIES



PK nail in power pole NE 112.00'  
Top center pedestal SW 101.00'

Minnesota State Plane Coordinate  
System Yellow Medicine County Datum  
NAD83 (1996)  
N: 142918.247  
E: 545047.875

Statement of evidence relative to this corner location is on back of page.

I hereby certify that this document and the data contained herein was prepared by me or under my direct supervision.

[Signature] 2/13/06  
SIGNATURE DATE

Registration No. 43844  
 Land Surveyor,  Professional Engineer  
 County Surveyor,  County Engineer

OFFICE OF THE COUNTY RECORDER  
County of \_\_\_\_\_

I hereby certify that this document was filed in the Co. Recorders office at \_\_\_\_\_ .M on the \_\_\_\_\_ day of \_\_\_\_\_ A.D. 20 \_\_\_\_\_

County Recorder \_\_\_\_\_  
By \_\_\_\_\_, Deputy  
DOCUMENT NO. \_\_\_\_\_

Statement of Evidence

In 1858, W. J. Neely did the original survey of the township lines.

On January 27, 2006 Bueltel-Moseng Land Surveying found a  $\frac{5}{8}$ " iron that had been set by the county. The Yellow Medicine County Highway Department informed us that when the bridge to the south was rebuilt the corners to the north and south of the bridge were found or established. We set a  $\frac{5}{8}$ " iron with seal #43844 over the existing iron.

Doc# 240396 Fee: \$.00 2 Pages

Office of County Recorder  
Yellow Medicine County, Minnesota  
I hereby certify that the within instrument  
was filed on April 11, 2006 at 09:50 AM

Kay Zempel, Yellow Medicine County Recorder

BY Jail Rohlik Deputy

**N/C**  
**Bueltel-Moseng Land Surveying**  
**P.O. Box 32**  
**Marshall, MN 56258**

# CERTIFICATE OF LOCATION OF GOVERNMENT CORNER

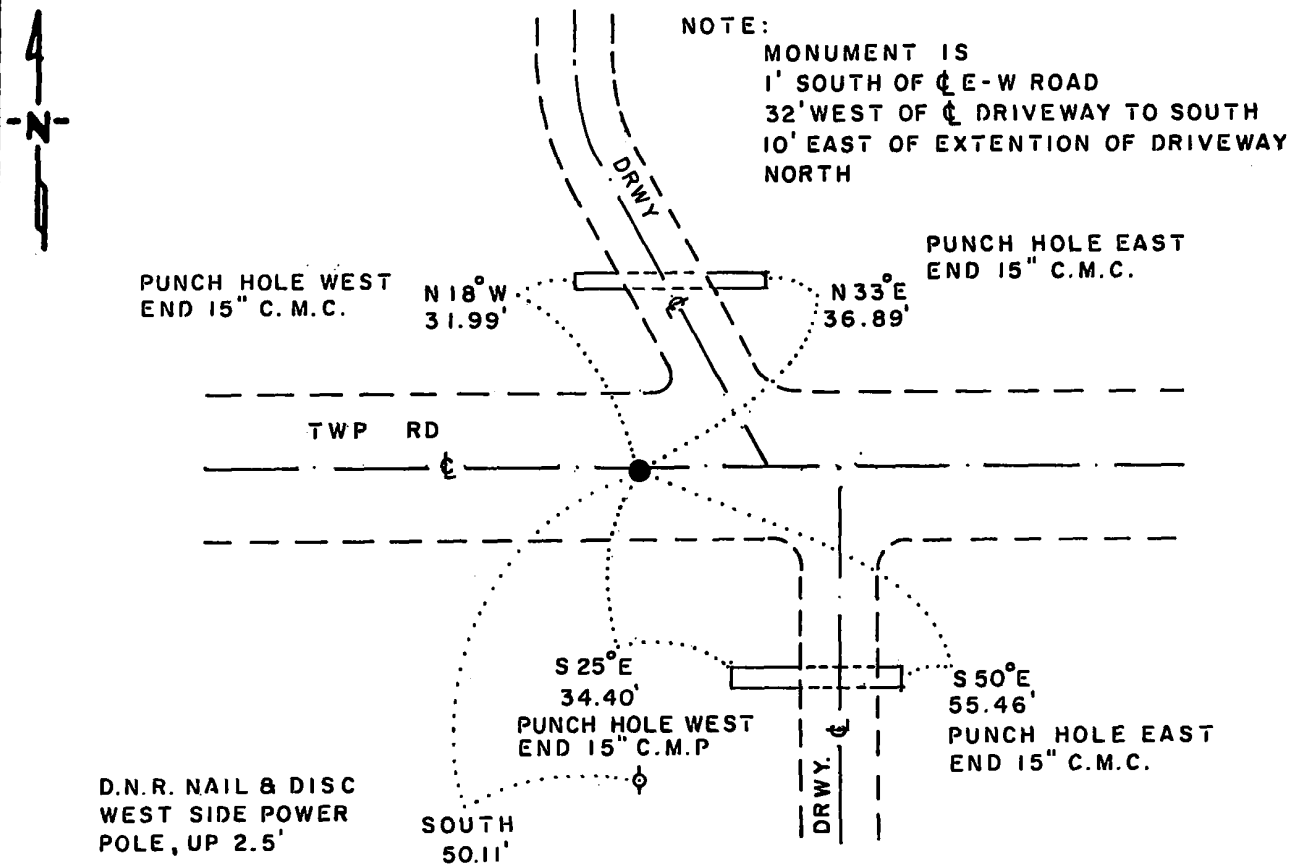
NORTH QUARTER Corner of Section 27, Township 114 N., Range 41 W., 5th P.M.

STATE OF MINNESOTA, County of YELLOW MEDICINE

At the corner location shown on the sketch:

- On 4-1-87 found a 8"x7"x16" FIELD STONE, DOWN 15"  
DATE
- left monument as found,  lowered monument,  removed monument (explain)
- On 4-1-87 placed a 1 1/4"x 1 1/4"x 20" PERFORATED STEEL TUBE WITH  
DATE  
ALUMINUM CAP STAMPED "D.N.R. SURVEY MARKER", DOWN 0.4', OVER STONE

## SKETCH OF REFERENCE TIES



BEARINGS OBSERVED WITH COMPASS

Statement of evidence relative to this corner location is on back of page.

J.B.M. 8-4-87  
A-1105

RECORDED  
GRANTOR  
GRANTEE  
INDEXED

I hereby certify that this document and the data contained herein was prepared by me or under my direct supervision.

Lowell R. Pomeroy 8-20-87  
SURVEYOR DATE

Registration No. 17005

- Land Surveyor,  Professional Engineer
- County Surveyor,  County Engineer

OFFICE OF THE COUNTY RECORDER  
County of Yellow Medicine

I hereby certify that this document was filed in the Co. Recorders office at 10:50 A.M. on the 24 day of August A.D., 19 87

County Recorder Norman J. Opdahl

By Kay Nordahl, Deputy

DOCUMENT NO. 191477

North Quarter Corner Section 27, Township 114 North, Range 41 West

The DNR Bureau of Engineering contacted the following offices for corner information:

Secretary of State  
Yellow Medicine County Recorder  
Yellow Medicine County Highway Engineer

1867 U.S. General Land Office notes in the Secretary of State's Office describes this corner as a set post with mound and charcoal.

1987 March 31, the DNR Bureau of Engineering hired a backhoe operated by Peterson Excavating of Clarkfield to dig for evidence of this corner. Dug a 6 ft. north-south by 16 ft. east-west by 30" deep hole, the center being midway between adjoining section corners. Found a stone with an old wood on its west side, down 15" at natural ground. Dimensions of stone are: top 8" by 7", bottom 12" by 10", height 16". Stone was found smaller end up, found no other stones of any size in excavation. Lowered stone to a depth of 24" and placed a 3/4" by 24" iron rod on its south side flush with the top of stone. Stone measures:

2643.37 ft. from the northwest corner of Section 27  
2628.84 ft. from the northeast corner of Section 27  
1.96 ft. south and 7.27 ft. east of the lost position

Analysis of the available information led the DNR Bureau of Engineering to conclude that the found stone marks the location of the corner.

# CERTIFICATE OF LOCATION OF GOVERNMENT CORNER

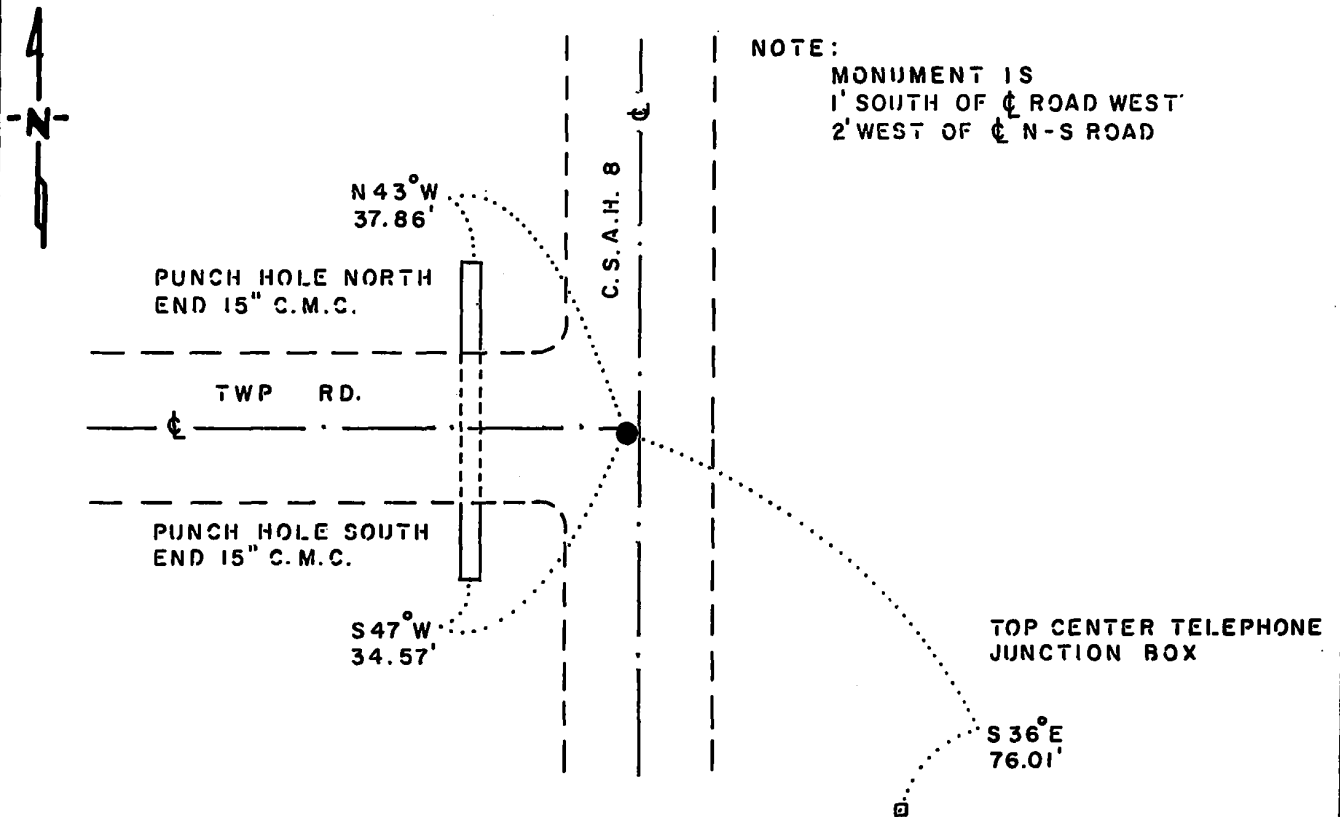
**NORTHEAST** Corner of Section 27, Township 114 N., Range 41 W., 5th. P.M.

STATE OF MINNESOTA, County of YELLOW MEDICINE

At the corner location shown on the sketch:

- On 4-1-87 found a 3/4" x 18" IRON PIPE, DOWN 0.8', OVER A 6" x 6" x 24" CUT GRANITE STONE, DOWN 52"  
DATE
  - left monument as found,  lowered monument,  removed monument (explain)
- On 4-1-87 placed a 1 1/4" x 1 1/4" x 20" PERFORATED STEEL TUBE WITH ALUMINIUM CAP STAMPED "D.N.R. SURVEY MARKER", DOWN 0.5', OVER STONE  
DATE

### SKETCH OF REFERENCE TIES



BEARINGS OBSERVED WITH COMPASS

Statement of evidence relative to this corner location is on back of page.

J.B.M. 8-4-87  
A-1105

RECORDED  
GRANTOR  
GRANTEE  
INDEXED

I hereby certify that this document and the data contained herein was prepared by me or under my direct supervision.

Lowell R. Pomeroy 8-20-87  
SIGNATURE DATE

Registration No. 17005

- Land Surveyor,  Professional Engineer
- County Surveyor,  County Engineer

OFFICE OF THE COUNTY RECORDER  
County of Yellow Medicine

I hereby certify that this document was filed in the Co. Recorders office at 10:45 A.M. on the 24 day of August A.D., 19 87

County Recorder Norman J. Opdahl

By Kay Nordahl, Deputy

DOCUMENT NO. 191476

Northeast Corner Section 27, Township 114 North, Range 41 West

The DNR Bureau of Engineering contacted the following offices for corner information:

Secretary of State  
Yellow Medicine County Recorder  
Yellow Medicine County Highway Engineer

- 1867 U.S. General Land Office notes in the Secretary of State's Office describes this corner as a set post.
- 1901 Surveyor's Record Book B, on page 164, from the County Recorder's Office, contains a collection of what was found at government section corners by John Norgaard, County Surveyor, in a township re-monumentation survey. Norgaard states this corner was "found mound as used by me and other surveyors years ago". A 6" by 6" by 24" jasper granite stone was set at this location, its top level with the ground.
- 1935 August 6, on Page 307 of a book of field notes obtained from DNR Division of Waters, the following is stated:  
Dug a 6 ft. by 4 ft. by 4 ft. deep hole, the center being at the intersection of County Road 8 with road west and fence line east. Found a 6" boulder down 1½ ft. and a 6" black stone 2 ft. north down 1½ ft. Found a 40 penny spike under black stone and pieces of wood under spike. Found a 6" by 6" by 24" stone monument about 5 ft. south of black stone down 4 ft. Placed two boulders and the spike over stone monument and a wood stake 1" by 2" by 14" just below road surface. Three ties were taken.
- 1941 A tie page of field notes, from the County Highway Engineer's Office, shows six ties to this corner, but no mention of a monument is made.
- 1987 March 31, the DNR Bureau of Engineering hired a backhoe operated by Peterson Excavating of Clarkfield to dig for evidence of this corner. Dug a 4 ft. east-west by 8 ft. north-south by 55" deep hole, the center at the intersection of roads north-south and west. Found a 3/4" by 18" iron pipe down 0.8 ft., 1 ft. west of centerline north-south road and on centerline road west. Encountered natural ground down 42" and found a 6" by 6" by 24" cut granite stone down 52". Placed a 3/4" by 24" iron rod on north side of stone flush with top. Stone is 1 ft. south of centerline road west, and 2 ft. west of centerline north-south road. Searched for record ties, but found nothing. Discarded found iron pipe.

Analysis of the available information led the DNR Bureau of Engineering to conclude that the found 6" by 6" by 24" cut granite stone marks the location of the corner, per John Norgaard's re-survey.

# CERTIFICATE OF LOCATION OF GOVERNMENT CORNER

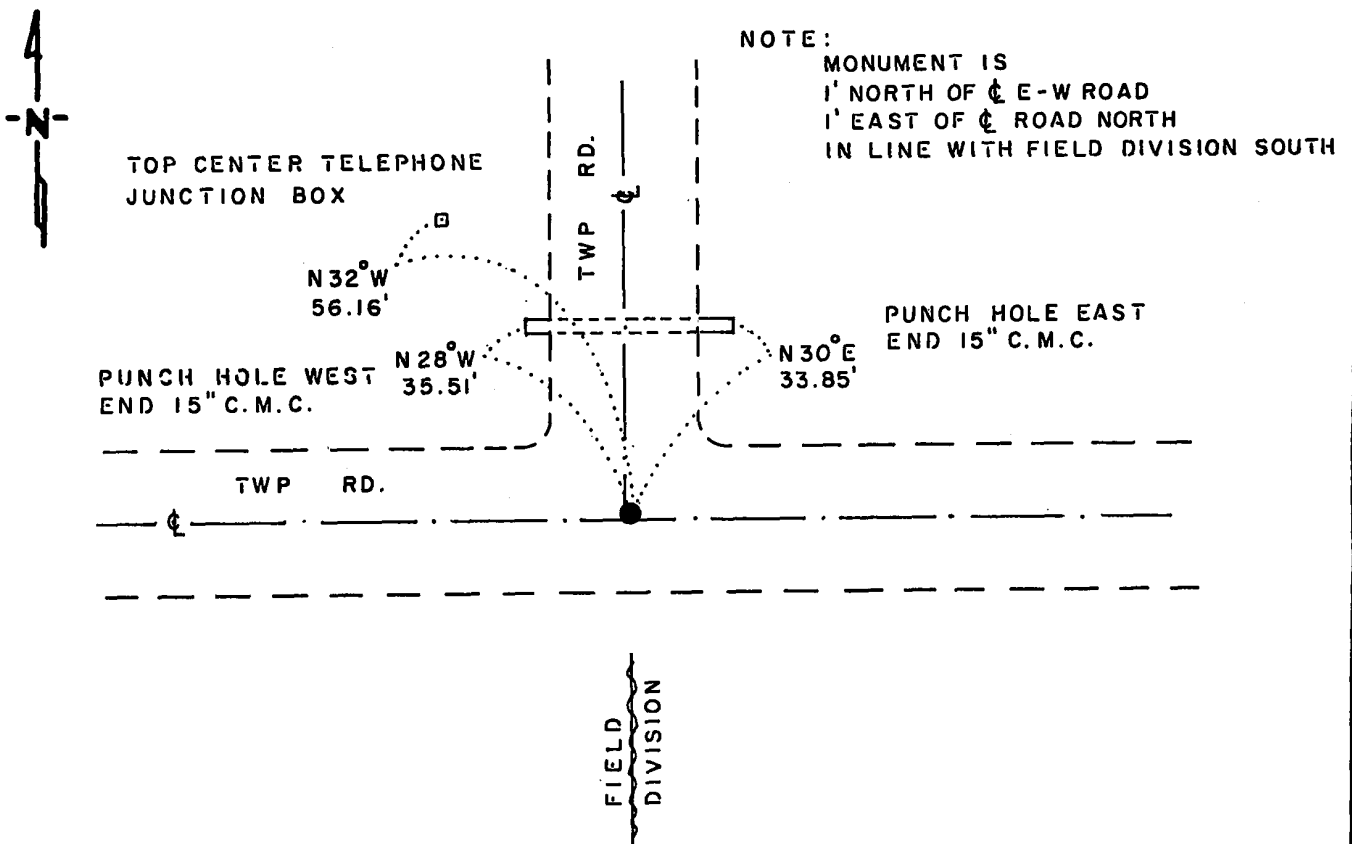
NORTHEAST Corner of Section 28, Township 114 N., Range 41 W., 5<sup>th</sup> P.M.

STATE OF MINNESOTA, County of YELLOW MEDICINE

At the corner location shown on the sketch:

- On 4-1-87 found a 6" x 6" x 24" CUT GRANITE STONE, DOWN 30"  
DATE
- left monument as found,  lowered monument,  removed monument (explain)
- On 4-1-87 placed a 1 1/4" x 1 1/4" x 20" PERFORATED STEEL TUBE WITH  
DATE  
ALUMINUM CAP STAMPED "D.N.R. SURVEY MARKER", DOWN 0.4', OVER STONE

### SKETCH OF REFERENCE TIES



BEARINGS OBSERVED WITH COMPASS

Statement of evidence relative to this corner location is on back of page.

J.B.M. 8-4-87  
A-1105

RECORDED  
GRANTOR ✓  
GRANTEE ✓  
INDEXED ✓

I hereby certify that this document and the data contained herein was prepared by me or under my direct supervision.

Lowell R. Pomeroy Jr. 8-20-87  
SIGNATURE DATE

Registration No. 17005

- Land Surveyor,  Professional Engineer
- County Surveyor,  County Engineer

**OFFICE OF THE COUNTY RECORDER**  
County of Yellow Medicine

I hereby certify that this document was filed in the Co. Recorders office at 10:55 A.M. on the 24 day of August A.D., 19 87

County Recorder Norman J. Opdahl

By Kay Nordahl, Deputy

DOCUMENT NO. 191478



Northeast Corner Section 28, Township 114 North, Range 41 West

The DNR Bureau of Engineering contacted the following offices for corner information:

Secretary of State  
Yellow Medicine County Recorder  
Yellow Medicine County Highway Engineer

- 1867 U.S. General Land Office notes in the Secretary of State's Office describes this corner as a set post.
- 1901 Surveyor's Record Book B, on page 164, from the County Recorder's Office, contains a collection of what was found at government section corners by John Norgaard, County Surveyor, in a township re-monumentation survey. Norgaard states, "found stake in the government mound". A 6" by 6" by 24" jasper granite stone was set at this location, its top level with the ground.
- 1901 October 10, Surveyor's Record Book, on Page 171, from the County Recorder's Office, contains a survey of Section 21 by John Norgaard, County Surveyor. Norgaard states at all section corners found stone monument set by himself in re-survey. Corner is shown:  
2650 ft. from the east quarter corner Section 21  
5300 ft. from the northeast corner Section 21
- 1911 Surveyor's Record Book, on page 235, from the County Recorder's Office, contains a survey of Section 21 by John Norgaard, County Surveyor. Norgaard states, "at all section corners found the jasper stone monuments set by me at the re-survey of the county." Corner is shown:  
2647.0 ft. from the east quarter corner of Section 21  
5294.0 ft. from the northeast corner of Section 21
- 1935 August 6, on Page 308 of a book of field notes obtained from DNR Division of Waters, the following is stated:  
Dug at the intersection of an east-west road, road north and fence line south. Found a 6" by 6" by 24" stone monument down 12" covered by rotted wood. Three ties were taken. On Page 234 of this field book, a distance of 5299.85 feet from this corner to the northeast corner of Section 21 is recorded.
- 1987 March 31, the DNR Bureau of Engineering hired a backhoe operated by Peterson Excavating of Clarkfield to dig for evidence of this corner. Dug a 4 ft. north-south by 8 ft. east-west by 3 ft. deep hole, the center at the intersection of roads east-west and north and field division south. Found a 6" by 6" by 24" cut granite stone down 30" at natural ground. Placed a 3/4" by 24" iron rod on its west side flush with stone. Searched for record ties, but found nothing. Stone measures 5299.23 ft. from the northeast corner Section 21.

Analysis of the available information led the DNR Bureau of Engineering to conclude that the found 6" by 6" by 24" stone marks the location of the corner per John Norgaard's re-survey.

# CERTIFICATE OF LOCATION OF GOVERNMENT CORNER

Northwest Corner of Section 33, Township 114, Range 41, 5th P.M.

STATE OF MINNESOTA, County of Yellow Medicine

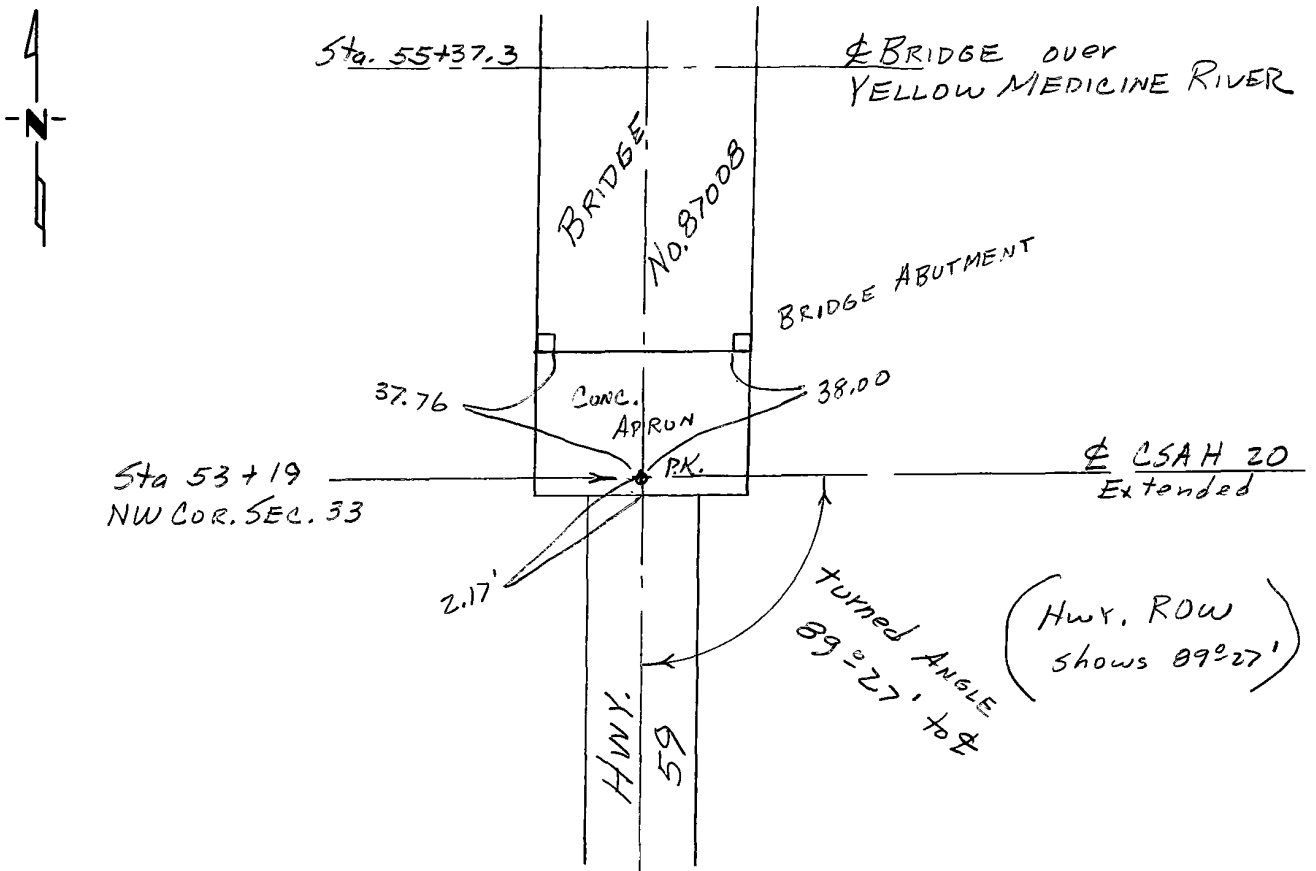
At the corner location shown on the sketch:

On 4 Mar. 1988 found a no monument in place  
DATE

left monument as found,  lowered monument,  removed monument (explain)

On 4 Mar. 1988 placed a PK nail at location for corner as shown  
DATE on MN Hwy. 59 R/W map.

### SKETCH OF REFERENCE TIES



Statement of evidence relative to this corner location is on back of page.

I hereby certify that this document and the data contained herein was prepared by me or under my direct supervision.

Sever J. Videman 8 March 1988  
SIGNATURE DATE

Registration No. 12237

Land Surveyor,  Professional Engineer

County Surveyor,  County Engineer

OFFICE OF THE REGISTER OF DEEDS  
County of Yellow Medicine

I hereby certify that this document was filed in the Reg. of Deeds office at 9:45 A.M. on the 9 day of March A.D., 1988

Register of Deeds Norman J. Opdahl COUNTY RECORDER

By Kay Dordahl, Deputy

DOCUMENT NO. 192698

RECORDED  
GRANTED  
GRANTEE  
INDEXED

Statement of Evidence:

KBM, Inc

Box 376

Redwood Falls

NC/10

# CERTIFICATE OF LOCATION OF GOVERNMENT CORNER

SOUTH QUARTER Corner of Section 34, Township 114, Range 41, 5TH P.M.

STATE OF MINNESOTA, County of YELLOW MEDICINE

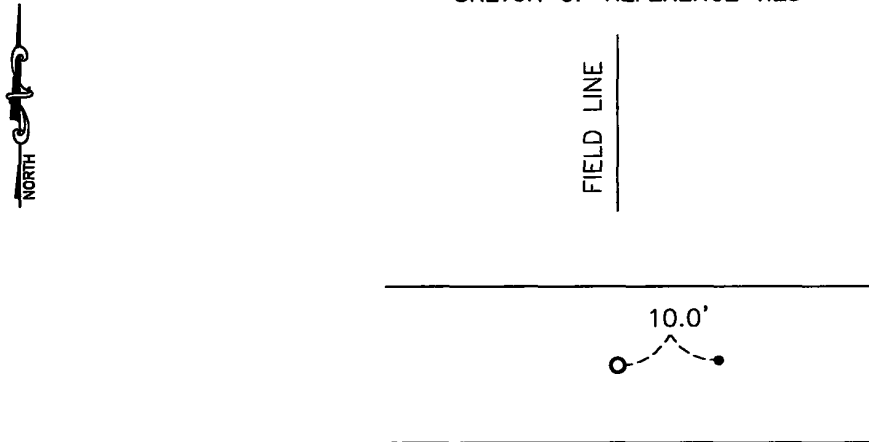
At the corner location shown on the sketch:

On \_\_\_\_\_ found a \_\_\_\_\_  
DATE

left monument as found,  lowered monument,  removed monument (explain)

On 05-09-2012 placed a CAST IRON MONUMENT  
DATE

### SKETCH OF REFERENCE TIES



Minnesota State Plane Coordinate  
System Yellow Medicine County Datum  
NAD83 (1996)

Iron 10.0'± east of corner

N: 132416.167  
E: 531771.379

Statement of evidence relative to this corner location is on back of page.

I hereby certify that this document and the data contained herein was prepared by me or under my direct supervision.

[Signature] 1/24/13  
SIGNATURE DATE

Registration No. 43844

- Land Surveyor,  Professional Engineer
- County Surveyor,  County Engineer

### OFFICE OF THE COUNTY RECORDER

County of \_\_\_\_\_

I hereby certify that this document was filed in the Co. Recorders office at \_\_\_\_\_ .M on the \_\_\_\_\_ day of \_\_\_\_\_ A.D. 20 \_\_\_\_\_

County Recorder \_\_\_\_\_

By \_\_\_\_\_, Deputy

DOCUMENT NO. \_\_\_\_\_

**Statement of Evidence**

In 1858, J. W. Neely did the original survey of the township lines.

On October 24, 1925, O. H. Sterk found a stone at the corner in line with a fence to the north.

On May 9, 2012, Bueltel-Moseng Land Surveying dug in line with the field line and found nothing. We set a cast iron monument in line with field line as Sterk recorded on the 1925 survey.

**Doc# 257326 Fee: \$0.00 2 Pages**

**Property & Public Services  
Property Records Division  
Yellow Medicine County, Minnesota**

**I hereby certify that the within instrument  
was filed on March 22, 2013 at 9:55 AM**

N/C

Bueltel-Moseng Land Surveying  
PO Box 32  
Marshall, MN 56258

Janel Timm, Yellow Medicine County Recorder

By Debra Blood Deputy

# CERTIFICATE OF LOCATION OF GOVERNMENT CORNER

NORTHEAST Corner of Section 34, Township 114, Range 41, 5TH P.M.

STATE OF MINNESOTA, County of YELLOW MEDICINE

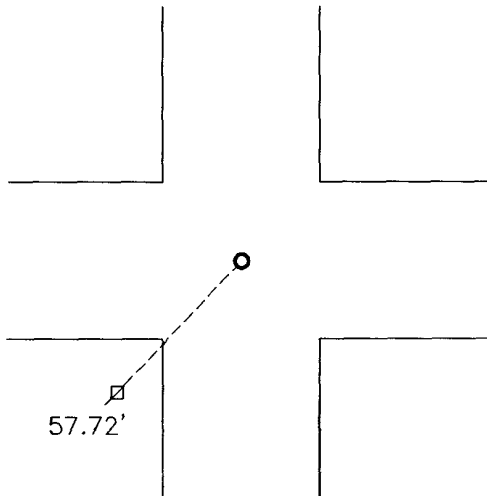
At the corner location shown on the sketch:

On 03-22-2010 found a RAILROAD SPIKE  
DATE

left monument as found,  lowered monument,  removed monument (explain)

On \_\_\_\_\_ placed a \_\_\_\_\_  
DATE

### SKETCH OF REFERENCE TIES



Minnesota State Plane Coordinate  
System Yellow Medicine County Datum  
NAD83 (1996)

N: 137707.920  
E: 534413.291

Nail and seal in utility pole SW 57.72'

Statement of evidence relative to this corner location is on back of page.

I hereby certify that this document and the data contained herein was prepared by me or under my direct supervision.

*David Benke* 1/6/11  
SIGNATURE DATE

Registration No. 43844

Land Surveyor,  Professional Engineer  
 County Surveyor,  County Engineer

### OFFICE OF THE COUNTY RECORDER

County of \_\_\_\_\_

I hereby certify that this document was filed in the Co. Recorders office at \_\_\_\_\_ .M on the \_\_\_\_\_ day of \_\_\_\_\_ A.D. 20 \_\_\_\_\_

County Recorder \_\_\_\_\_

By \_\_\_\_\_, Deputy

DOCUMENT NO. \_\_\_\_\_

Statement of Evidence

In 1861, David Watson did the original subdivision of the township.

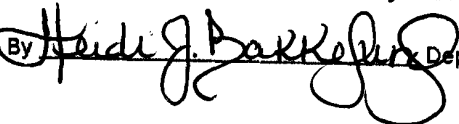
In 1930, the Yellow Medicine Highway Department found a granite monument at the corner.

On March 22, 2010, Bueltel-Moseng Land Surveying found a railroad spike at the corner.

Doc# 252039 Fee: \$0.00 2 Pages

Office of County Recorder  
Yellow Medicine County, Minnesota  
I hereby certify that the within instrument  
was filed on January 13, 2011 at 8:35 AM

Kay Zempel, Yellow Medicine County Recorder

By  Deputy

N/C

Bueltel-Moseng Land Surveying  
P.O. Box 32  
Marshall, MN 56258

# CERTIFICATE OF LOCATION OF GOVERNMENT CORNER

\_\_\_\_\_ East Quarter \_\_\_\_\_ Corner of Section 34 , Township 114 , Range 41 , 5th P.M.

STATE OF MINNESOTA, County of Yellow Medicine

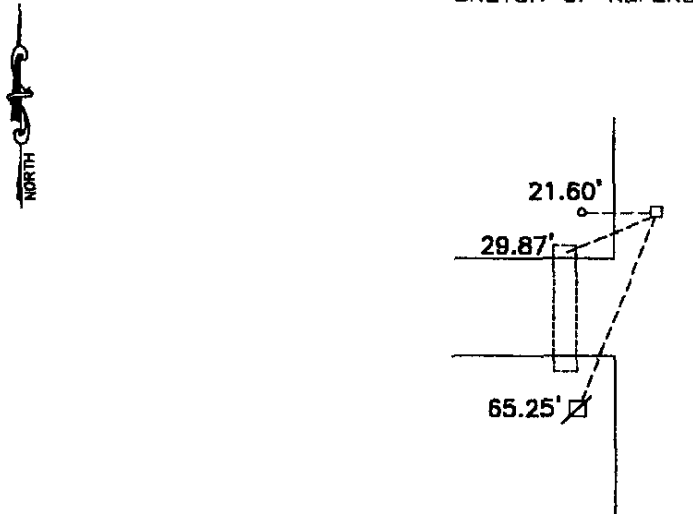
At the corner location shown on the sketch:

On Sept. 9, 1992 found a \*\* SEE BACK \*\*  
DATE

left monument as found,  lowered monument,  removed monument (explain)

On Sept. 9, 1992 placed a 1 1/2" iron pipe next to the pointed field stone.  
DATE

### SKETCH OF REFERENCE TIES



Nail and seal in power pole SW 65.25'  
 "X" in top of concrete culvert SW 29.87'  
 Center of field tile inlet W 21.60'

Statement of evidence relative to this corner location is on back of page.

RECORDED
GRANTOR <input checked="" type="checkbox"/>
GRANTEE <input checked="" type="checkbox"/>
INDEXED <input checked="" type="checkbox"/>

I hereby certify that this document and the data contained herein was prepared by me or under my direct supervision.

Lyle C Mosing 2-5-96  
SIGNATURE DATE

Registration No. 119413

Land Surveyor,  Professional Engineer  
 County Surveyor,  County Engineer

OFFICE OF THE COUNTY RECORDER  
 County of Yellow Medicine

I hereby certify that this document was filed in the Co. Recorders office at 2:15 P.M on the 20th day of November A.D. 1996

County Recorder Thomas A. Spence

By \_\_\_\_\_, Deputy

DOCUMENT NO. 213054



STATEMENT OF EVIDENCE:

September 9, 1992, we found a pointed field stone and it was  $2' \pm$  from a direct split of the mile. We placed a  $1 \frac{1}{2}$ " iron pipe next to the stone.

# CERTIFICATE OF LOCATION OF GOVERNMENT CORNER

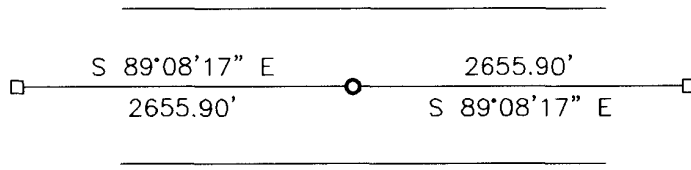
NORTH QUARTER Corner of Section 35, Township 114, Range 41, 5TH P.M.

STATE OF MINNESOTA, County of YELLOW MEDICINE

At the corner location shown on the sketch:

- On \_\_\_\_\_ found a \_\_\_\_\_  
DATE
- left monument as found,  lowered monument,  removed monument (explain)
- On 03-22-2010 placed a SURVEY SPIKE WITH SEAL #43844  
DATE

### SKETCH OF REFERENCE TIES



Minnesota State Plane Coordinate  
System Yellow Medicine County Datum  
NAD83 (1996)

N: 137667.967  
E: 537068.885

Statement of evidence relative to this corner location is on back of page.

I hereby certify that this document and the data contained herein was prepared by me or under my direct supervision.

*David B. ...* 1/6/11  
SIGNATURE DATE

Registration No. 43844

- Land Surveyor,  Professional Engineer
- County Surveyor,  County Engineer

### OFFICE OF THE COUNTY RECORDER

County of \_\_\_\_\_

I hereby certify that this document was filed in the Co. Recorders office at \_\_\_\_\_ M on the \_\_\_\_\_ day of \_\_\_\_\_ A.D. 20 \_\_\_\_

County Recorder \_\_\_\_\_

By \_\_\_\_\_, Deputy

DOCUMENT NO. \_\_\_\_\_

Statement of Evidence

In 1861, David Watson did the original subdivision of the township.

On March 22, 2010, Bueltel-Moseng Land Surveying set a survey spike with seal #43844 midway and on line between the section corners.

Doc# 252041 Fee: \$0.00 2 Pages

Office of County Recorder

Yellow Medicine County, Minnesota

I hereby certify that the within instrument  
was filed on January 13, 2011 at 8:45 AM

Kay Zempel, Yellow Medicine County Recorder

By  Deputy

N/C

Bueltel-Moseng Land Surveying  
P.O. Box 32  
Marshall, MN 56258

# CERTIFICATE OF LOCATION OF GOVERNMENT CORNER

NORTHEAST Corner of Section 35, Township 114, Range 41, 5TH P.M.

STATE OF MINNESOTA, County of YELLOW MEDICINE

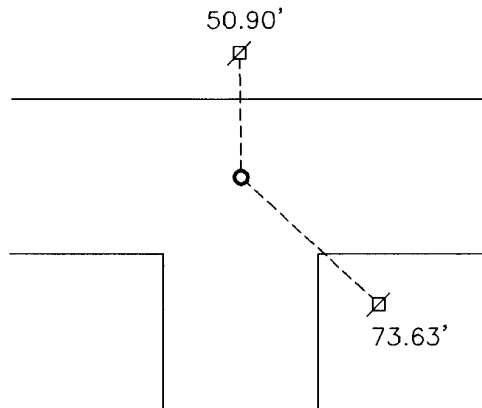
At the corner location shown on the sketch:

On 03-22-2010 found a RAILROAD SPIKE  
DATE

left monument as found,  lowered monument,  removed monument (explain)

On \_\_\_\_\_ placed a \_\_\_\_\_  
DATE

### SKETCH OF REFERENCE TIES



Minnesota State Plane Coordinate  
System Yellow Medicine County Datum  
NAD83 (1996)

Nail and survey marker in utility pole North 50.90'  
Nail and survey marker in utility pole SE 73.63'

N: 137628.022  
E: 539724.481

Statement of evidence relative to this corner location is on back of page.

I hereby certify that this document and the data contained herein was prepared by me or under my direct supervision.

  
SIGNATURE

1/6/11  
DATE

Registration No. 43844

Land Surveyor,  Professional Engineer  
 County Surveyor,  County Engineer

OFFICE OF THE COUNTY RECORDER  
County of \_\_\_\_\_

I hereby certify that this document was filed in the Co. Recorders office at \_\_\_\_\_ .M on the \_\_\_\_\_ day of \_\_\_\_\_ A.D. 20 \_\_\_\_\_

County Recorder \_\_\_\_\_

By \_\_\_\_\_, Deputy

DOCUMENT NO. \_\_\_\_\_

Statement of Evidence

In 1861, David Watson did the original subdivision of the township.

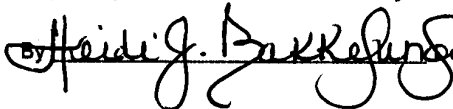
In 1964, the county assumed the corner. They did a total grading project.

On March 22, 2010, Bueltel-Moseng Land Surveying found a railroad spike at the corner.

Doc# 252040 Fee: \$0.00 2 Pages

Office of County Recorder  
Yellow Medicine County, Minnesota  
I hereby certify that the within instrument  
was filed on January 13, 2011 at 8:40 AM

Kay Zempel, Yellow Medicine County Recorder

By  Deputy

N/C

Bueltel-Moseng Land Surveying  
P.O. Box 32  
Marshall, MN 56258

**Corners to be Indexed**

N1/4 COR. SEC. 36-115-41  
 SW COR. SEC. 36-115-41  
 NE COR. SEC. 2-114-41  
 S1/4 COR. SEC. 36-115-41  
 N1/4 COR. SEC. 1-114-41  
 SE COR. SEC. 36-115-41  
 NE COR. SEC. 1-114-41

**Doc# 277300 Fee: \$0.00 2 Pages**

Property & Public Services  
 Property Records Division  
 Yellow Medicine County, Minnesota  
 I hereby certify that the within instrument  
 was filed on February 1, 2022 at 9:20 AM

I hereby certify that this document and the data  
 contained herein was prepared by me or under  
 my direct supervision

*[Signature]*

1/20/2022  
 Date

Daniel L. Bueltel  
 License No. 43844

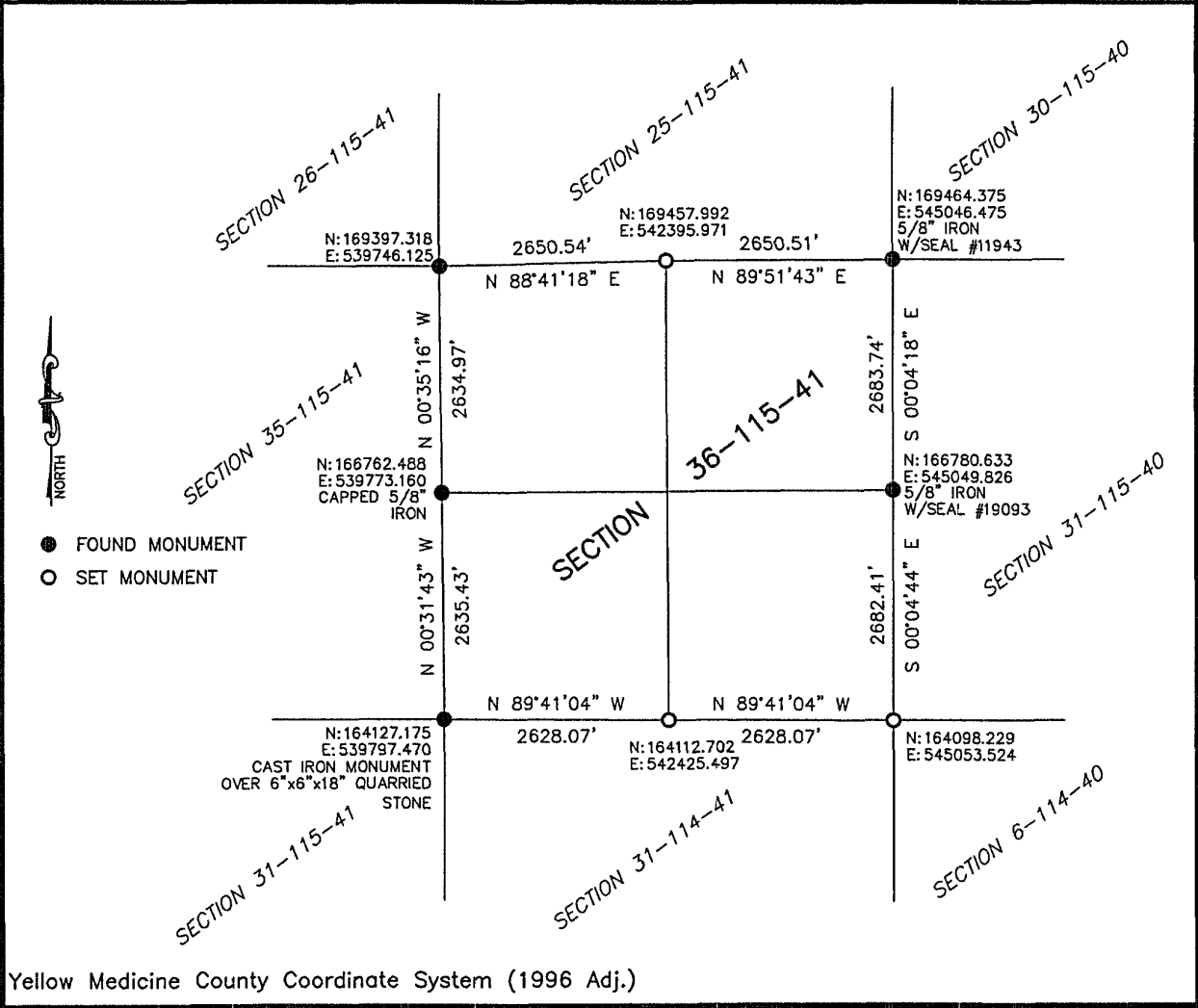
Janel Timm, Yellow Medicine County Recorder

By *Marit Nordang* Deputy

**CERTIFICATE OF LOCATION OF GOVERNMENT CORNER**

Land survey monuments situated in Section 36, Township 115, Range 41, 5TH P.M.

STATE OF MINNESOTA, County of YELLOW MEDICINE



Yellow Medicine County Coordinate System (1996 Adj.)

Statement of Evidence: SECTION 36-115-41

N1/4 COR. SEC. 36-115-41

On January 27, 2014 Roy Marihart set 5/8" iron with seal #19092 in centerline of road and midway between section corners.

On July 30, 2021 Bueltel-Moseng Land Surveying did not find iron set by Roy Marihart. Reset corner using Mariharts survey from 2014.

SW COR. SEC. 36-115-41 (NE COR. 2-114-41)

On July 30, 2021 Bueltel-Moseng Land Surveying dug with backhoe and found a 6"x6"x18" quarried stone and set a cast iron monument over top of the stone.

S1/4 COR. SEC. 36-115-41 (N1/4 COR. 1-114-41)

On July 30, 2021 Bueltel-Moseng Land Surveying set a 5/8" iron with seal #43844 midway and on line between section corners, corner fell 1'± south of the centerline of the road.

SE COR. SEC. 36-115-41 (NE COR. 1-114-41)

On July 30, 2021 Bueltel-Moseng Land Surveying found a bridge spike, removed and dug with a backhoe, found nothing. Replaced bridge spike with 5/8" iron with seal #43844.

# CERTIFICATE OF LOCATION OF GOVERNMENT CORNER

NORTHEAST Corner of Section 36, Township 114, Range 41, 5TH P.M.

STATE OF MINNESOTA, County of YELLOW MEDICINE

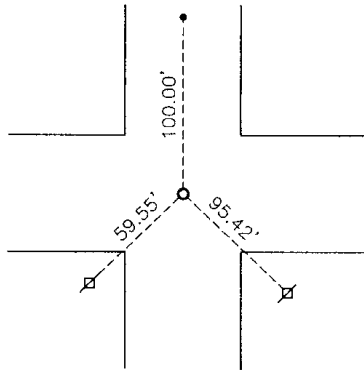
At the corner location shown on the sketch:

On 02-02-2006 found a RAILROAD SPIKE

left monument as found,  lowered monument,  removed monument (explain)

On 02-02-2006 placed a 5/8" IRON W/ SEAL #43844

### SKETCH OF REFERENCE TIES



PK nail in power pole SW 59.55'  
Nail and bottle cap in power pole SE 95.42'  
Spike in center of road N 100.00'

Minnesota State Plane Coordinate  
System Yellow Medicine County Datum  
NAD83 (1996)

N: 137633.563  
E: 545045.111

Statement of evidence relative to this corner location is on back of page.

I hereby certify that this document and the data contained herein was prepared by me or under my direct supervision.

[Signature] 2/13/06  
SIGNATURE DATE

Registration No. 43844

Land Surveyor,  Professional Engineer  
 County Surveyor,  County Engineer

OFFICE OF THE COUNTY RECORDER

County of \_\_\_\_\_

I hereby certify that this document was filed in the Co. Recorders office at \_\_\_\_\_ .M on the \_\_\_\_\_ day of \_\_\_\_\_ A.D. 20 \_\_\_\_\_

County Recorder \_\_\_\_\_

By \_\_\_\_\_, Deputy

DOCUMENT NO. \_\_\_\_\_



Statement of Evidence

In 1858, W. J. Neely did the original survey of the township lines.

(No Date) The Yellow Medicine County Highway Department found a stone at the corner and placed a railroad spike over it.

On February 2, 2006 Bueltel-Moseng Land Surveying found a railroad spike set by the county. We removed the spike and set a  $\frac{3}{8}$ " iron with seal #43844 in its place.

Doc# 240395 Fee: \$.00 2 Pages

Office of County Recorder  
Yellow Medicine County, Minnesota  
I hereby certify that the within instrument  
was filed on April 11, 2006 at 09:45 AM

Kay Zempel, Yellow Medicine County Recorder

BY Hail Rohlik Deputy

**N/C**  
**Bueltel-Moseng Land Surveying**  
**P.O. Box 32**  
**Marshall, MN 56258**

# CERTIFICATE OF LOCATION OF GOVERNMENT CORNER

Corner to Section 36 Township 114 N Range 41 W No. \_\_\_\_\_

STATE OF MINNESOTA,

County of Yellow Medicine S.S.

I hereby certify that on the 27th day of March 1980,  
that I, Lyle E. Moseng, a Registered Land Surveyor, ~~County Surveyor,~~  
~~County Highway Engineer,~~ found the South Quarter corner of Section 36  
\_\_\_\_\_ which was evidenced by a field stone with a 3/4" iron pin at it's side  
\_\_\_\_\_ and I further certify that to perpetuate the  
location of such corner I did, at the exact location thereof, place a permanent  
marker consisting of a cast iron monument top of stone 6" below existing surface.  
I further certify that I established 1 references or witness monuments consist-  
ing of steel fence post which reference or witness monuments are  
located in the manner following.

Steel fence post North 5.5 feet

□ S 89°32'20" E 2659.89 ft □ S 89°32'14" E 2659.07 ft □



Dated at Marshall, Minnesota, this 29th day of May, 1980.

**183020**

OFFICE OF THE REGISTER OF DEEDS

County of Yellow Medicine

Lyle E. Moseng  
~~County Surveyor, County Highway Engineer,~~  
Registered Land Surveyor No. 11943

I hereby certify that the within instrument was filed in this office for  
record on the 16 day of November A.D., 1983 at 3:30 o'clock P.M.

Norman J. Opdahl, County Recorder

Register of Deeds

by Kay Neadehl Deputy

# CERTIFICATE OF LOCATION OF GOVERNMENT CORNER

Corner to Section 36 Township 114 N Range 41 W No. \_\_\_\_\_

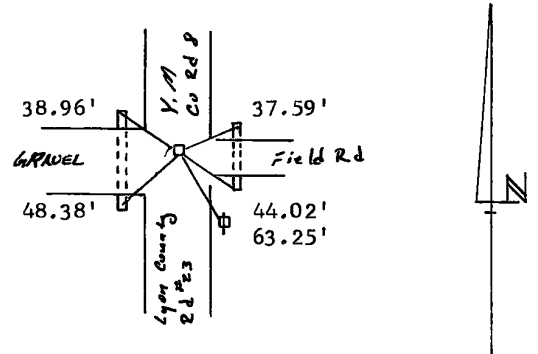
STATE OF MINNESOTA,

County of Yellow Medicine S.S.

I hereby certify that on the 7th day of April 1980,  
 that I, Lyle E. Moseng, a Registered Land Surveyor, ~~County Surveyor,~~  
~~County Highway Engineer,~~ found the Southwest corner of Section 36  
 which was evidenced by A square cut granite 6"x6"; 18" below existing surface  
 and I further certify that to perpetuate the  
 location of such corner I did, at the exact location thereof, place a permanent  
 marker consisting of a cast iron monument 6" below existing surface.

I further certify that I established 5 references or witness monuments consist-  
 ing of both ends of two cmp culverts & a power pole which reference or witness monuments are  
 located in the manner following.

- |                                   |             |
|-----------------------------------|-------------|
| Pk nail in top of 18" CMP culvert | NE 37.59 ft |
| Pk nail in top of 18" CMP culvert | SE 44.02 ft |
| Pk nail in top of 18" CMP culvert | SW 48.38 ft |
| Dh nail & bc in PP                | SE 63.25 ft |
| Pk nail in top of 18" CMP culvert | NW 38.96 ft |



Dated at Marshall, Minnesota, this 29th day of May, 1980.

**183019**  
 OFFICE OF THE REGISTER OF DEEDS  
 County of Yellow Medicine

Lyle E. Moseng  
~~County Surveyor, County Highway Engineer,~~  
 Registered Land Surveyor No. 11943

I hereby certify that the within instrument was filed in this office for  
 record on the 16 day of November A.D., 1983, at 3:25 o'clock P.M.

Norman J. Opdahl, Co. Recorder  
 Register of Deeds  
 by Kay Nordahl Deputy