

CERTIFICATE OF LOCATION OF GOVERNMENT CORNER

Corner to Section 5 Township 114 N. Range 43 W. No. _____

STATE OF MINNESOTA,

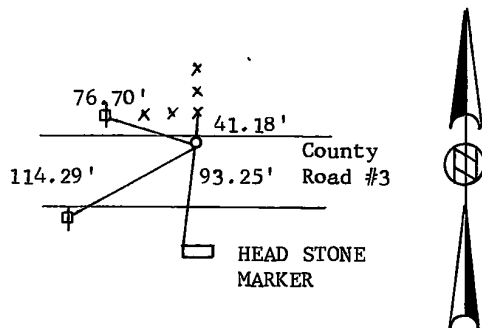
County of Yellow Medicine S.S.

I hereby certify that on the 10th day of October 1978,
that I, Lyle E. Moseng, a Registered Land Surveyor, ~~County Surveyor,~~
~~County Highway Engineer,~~ found the North Quarter corner of Section 5
_____ which was evidenced by See Back

_____ and I further certify that to perpetuate the
location of such corner I did, at the exact location thereof, place a permanent
marker consisting of 1 1/2 inch Iron Pipe.

I further certify that I established 4 references or witness monuments consist-
ing of corner fence post, power poles, head which reference or witness monuments are
stone marker in cemetery
located in the manner following.

- NORTH 41.18 FEET TO DH & BC IN CORNER FENCE POST
- SOUTH 93.25 FEET TO TOP OF NW CORNER OF HEAD STONE
JOHN & LENA THIELGES.
- SOUTHWEST 114.29 FEET TO DH & BC IN POWER POLE
- NORTHWEST 76.70 FEET TO DH & BC IN POWER POLE



Dated at Marshall, Minnesota, this 2nd day of January, 1979.

Lyle E. Moseng
~~County Surveyor, County Highway Engineer,~~
Registered Land Surveyor No. 11943

183032
OFFICE OF THE REGISTER OF DEEDS

County of Yellow Medicine

I hereby certify that the within instrument was filed in this office for
record on the 17 day of November A.D., 1983 at 3:10 o'clock P.M.

Norman J. Opdahl, County Recorder
Register of Deeds

by Kay Nordahl Deputy

We dug and found an large stone,18 inches around, 18 inches deep below the asphalt. Corner is 1 foot south of the north edge of the asphalt. This stone check out with the 1929 survey distanne found in the County Courthouse.

CERTIFICATE OF LOCATION OF GOVERNMENT CORNER

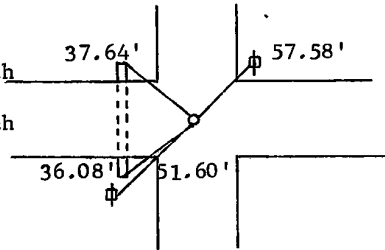
Corner to Section 6 Township 114 N. Range 43 W. No. _____

STATE OF MINNESOTA,

County of Yellow Medicine S.S.

I hereby certify that on the 10th day of October 1978,
 that I, Lyle E. Moseng, a Registered Land Surveyor, ~~County Surveyor,~~
~~County Highway Engineer,~~ found the Northeast corner of Section 6
 _____ which was evidenced by field stone 2 feet below asphalt, found stone from county
ties and I further certify that to perpetuate the
 location of such corner I did, at the exact location thereof, place a permanent
 marker consisting of 1 1/2 inch iron pipe.
 I further certify that I established 4 references or witness monuments consist-
 ing of power poles, both ends of cmp culvert which reference or witness monuments are
 located in the manner following.

- NORTHEAST 57.58 FEET TO DH & BC IN POWER POLE
- SOUTHWEST 51.60 FEET TO DH & BC IN POWER POLE
- SOUTHWEST 36.08 FEET TO CONCRETE NAIL IN END OF 18 inch
CMP CULVERT
- NORTHWEST 37.64 FEET TO CONCRETE NAIL IN END OF 18 inch
CMP CULVERT



Dated at Marshall, Minnesota, this 2nd day of January, 1979.

Lyle E. Moseng
~~County Surveyor, County Highway Engineer,~~
 Registered Land Surveyor No. 11943

183033

OFFICE OF THE REGISTER OF DEEDS

County of Yellow Medicine

I hereby certify that the within instrument was filed in this office for record on the 17 day of November A.D., 1983 at 3:15 o'clock P.M.

Norman J. Opdahl, County Recorder
 Register of Deeds
 by Kay Nordahl Deputy

Sk 6 1964

Y.M. Index No. _____

CERTIFICATE OF LOCATION OF GOVERNMENT CORNER

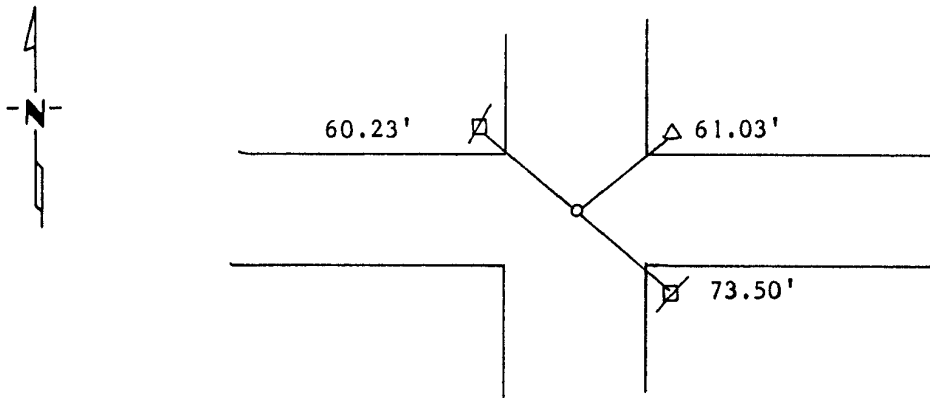
Northeast Corner of Section 8, Township 114N, Range 43W, 5th P.M.

STATE OF MINNESOTA, County of Yellow Medicine

At the corner location shown on the sketch:

- On 8/77 found a 1/2" smooth rod 12" below road surface in old road bed, we dug around it and found no stone.
DATE
 left monument as found, lowered monument, removed monument (explain)
- On _____ placed a _____
DATE

SKETCH OF REFERENCE TIES



Nail and Bottel Cap Power Pole NW 60.23'
 Nail and Bottel Cap Power Pole SE 73.50'
 Nail and Bottel Cap Telephone Pedastel NE 61.03'

Statement of evidence relative to this corner location is on back of page.

I hereby certify that this document and the data contained herein was prepared by me or under my direct supervision.

Lyle E. Moseley 2/22/1989
SIGNATURE DATE

Registration No. 11943

- Land Surveyor, Professional Engineer
- County Surveyor, County Engineer

OFFICE OF THE COUNTY RECORDER
County of Yellow Medicine

I hereby certify that this document was filed in the Co. Recorders office at 10:05 A.M. on the 8 day of November A.D., 19 89

County Recorder Norman J. Goddard

By _____, Deputy

DOCUMENT NO. 196206

Statement of Evidence:

CERTIFICATE OF LOCATION OF GOVERNMENT CORNER

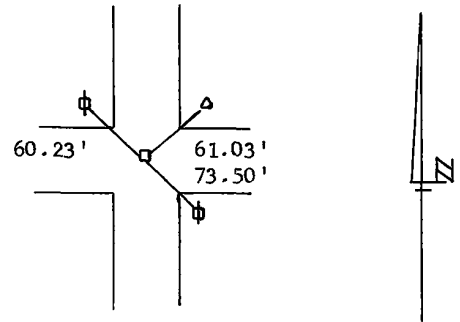
Corner to Section 8 Township 114 N Range 43 W No. _____

STATE OF MINNESOTA,

County of Yellow Medicine S.S.

I hereby certify that on the 10th day of October 1978,
that I, Lyle E. Moseng, a Registered Land Surveyor, ~~County Surveyor,~~
~~County Highway Engineer,~~ found the Northeast corner of Section 8
_____ which was evidenced by 1/2" solid iron rod 2' below existing asphalt; the iron rod
was in the old road bed; fnd nothing else and I further certify that to perpetuate the
location of such corner I did, at the exact location thereof, place a permanent
marker consisting of 1 1/2" iron pipe flush with existing asphalt.
I further certify that I established 3 references or witness monuments consist-
ing of telephone pedestal & two power poles which reference or witness monuments are
located in the manner following.

Top of buried telephone pedestal	NE 61.03 ft
Dh nail & bc in PP	SE 73.50 ft
Dh nail & bc in PP	NW 60.23 ft



Dated at Marshall, Minnesota, this 29th day of May, 1980.

183034

OFFICE OF THE REGISTER OF DEEDS

County of Yellow Medicine

Lyle E. Moseng
~~County Surveyor, County Highway Engineer,~~
Registered Land Surveyor No. 11943

I hereby certify that the within instrument was filed in this office for
record on the 17 day of November A.D., 1983, at 3:20 o'clock P.M.

Norman J. Opdahl, County Recorder
Register of Deeds

by Kay Opdahl Deputy

CERTIFICATE OF LOCATION OF GOVERNMENT CORNER

Corner to Section 13 Township 114 N Range 43 W No. _____

STATE OF MINNESOTA,

County of Yellow Medicine S.S.

I hereby certify that on the 17th day of April 1979,
that I, Lyle E. Moseng, a Registered Land Surveyor, ~~County Surveyor,~~
~~County Highway Engineer,~~ found the East Quarter corner of Section 13
_____ which was evidenced by railroad spike; was on line between the section corners;
set the the DNR and I further certify that to perpetuate the
location of such corner I did, at the exact location thereof, place a permanent
marker consisting of left as found.
I further certify that I established _____ references or witness monuments consist-
ing of no ties which reference or witness monuments are
located in the manner following.

Dated at Marshall, Minnesota, this 9th day of June, 1980.

Lyle E. Moseng
~~County Surveyor, County Highway Engineer,~~
Registered Land Surveyor No. 11943

183035
OFFICE OF THE REGISTER OF DEEDS

County of Yellow Medicine

I hereby certify that the within instrument was filed in this office for
record on the 17 day of November A.D., 1983 at 3:25 o'clock P.M.

Norman J. Opdahl, County Recorder
Register of Deeds

by Ray Nordahl Deputy

CERTIFICATE OF LOCATION OF GOVERNMENT CORNER

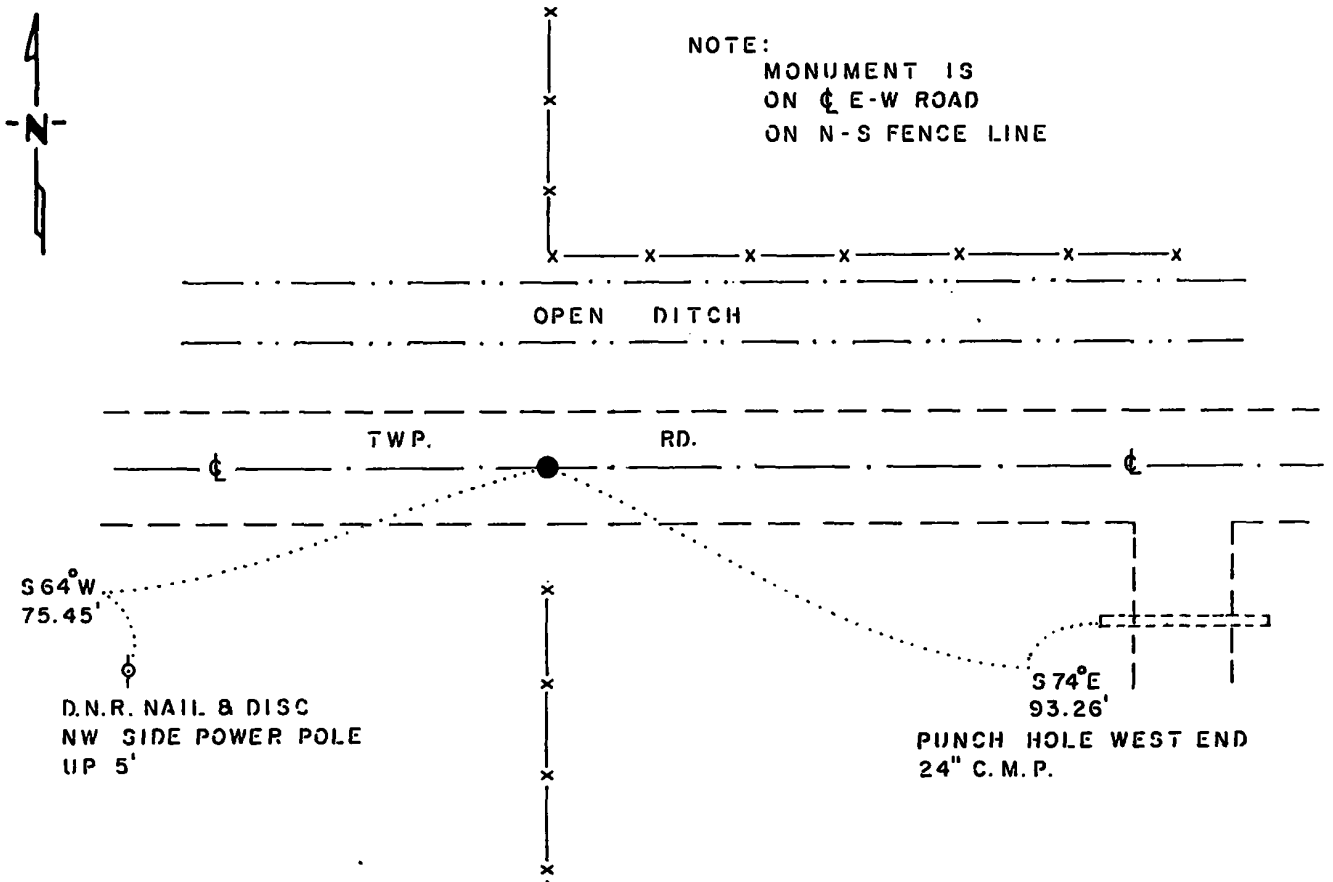
NORTH QUARTER Corner of Section 19, Township 114 N., Range 43 W., 5th P.M.

STATE OF MINNESOTA, County of YELLOW MEDICINE

At the corner location shown on the sketch:

- On _____ found a _____
DATE
- left monument as found, lowered monument, removed monument (explain)
- On 11-20-85 placed a 1 1/4" x 1 1/4" x 20" PERFORATED STEEL TUBE WITH
DATE
ALUMINUM CAP STAMPED "D.N.R. SURVEY MARKER", DOWN 0.3'

SKETCH OF REFERENCE TIES



NOTE:
MONUMENT IS
ON C E-W ROAD
ON N-S FENCE LINE

BEARINGS OBSERVED WITH COMPASS

Statement of evidence relative to this corner location is on back of page.

J. B. M. 1-28-86
G-651

I hereby certify that this document and the data contained herein was prepared by me or under my direct supervision.

Bruce W. Sheppard 4-28-86
SIGNATURE DATE

Registration No. 17003

- Land Surveyor, Professional Engineer
- County Surveyor, County Engineer

OFFICE OF THE COUNTY RECORDER
County of Yellow Medicine

I hereby certify that this document was filed in the Co. Recorders office at 9:20 A.M. on the 1 day of May A.D., 19 86

County Recorder Norman J. Opdahl

By Kay Nordahl, Deputy

DOCUMENT NO. 188274

RECORDED
GRANTED
INDEXED

North Quarter Corner Section 19, Township 114 North, Range 43 West

This corner was originally established by the U. S. General Land Office survey in 1867. The government notes show:

set quarter post in mound with charred stake and pits

In June 1983, the DNR Bureau of Engineering contacted the Yellow Medicine County Offices of the Recorder and Highway Engineer for corner information.

The following information was obtained from the Recorder's Office:

Surveyor's Plat Book, Pages 190 and 191 contain a survey by John Norgaard, County Surveyor, in 1905. Survey states "found stone in the government mound." The corner is shown:

2612 feet from the northwest corner of Section 19

The following information was obtained from the Highway Engineer's Office:

Section Corner Book, date not indicate, shows corner but does not state what was found or set. The following ties are shown to corner:

third fence post, east-northeast, 65.8 feet

corner fence post, southeast, 42.2 feet

second fence post, east-southeast, 71.8 feet

The following information was obtained from the DNR Bureau of Engineering's Records:

In 1969, corner was established in line with fences north and south, and on a line from the northeast corner of Section 19 to the northwest corner of Section 19. Survey does not indicate what was set to mark corner. The corner is shown:

2646.50 feet from the northeast corner of Section 19

2614.12 feet from the northwest corner of Section 19

On July 5, 1983, the DNR Bureau of Engineering traversed to the area of the corner and located the center line of an east-west road and fences north and south. Searched for but did not find any record ties.

On June 29, 1983, the DNR Bureau of Engineering hired a backhoe operated by Larry Giese, of Porter to dig for evidence of this corner. Dug a hole 12 feet north-south by 10 feet east-west by 18 inches deep the center being on the center line of east-west road and fences north and south. Natural ground was encountered down 4 inches. No monument was found.

Then a temporary point was set on the center line of east-west road in line with fences north and south. This point was found to be:

2647.03 feet from the northeast corner of Section 19

2614.20 feet from the northwest corner of Section 19

17.56 feet north of a line between adjoining section corners

Accept the temporary point as the location of the corner.

Traverse information is available from the DNR Bureau of Engineering.

281hab/missul

CERTIFICATE OF LOCATION OF GOVERNMENT CORNER

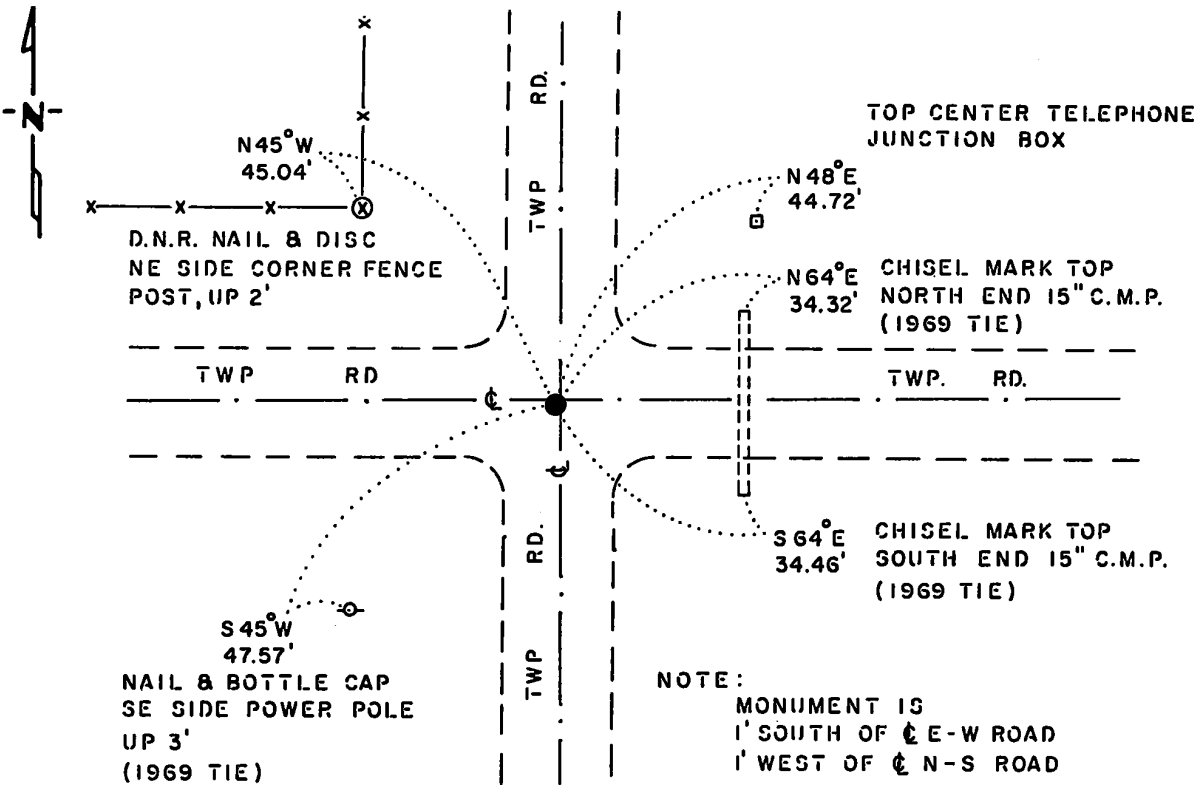
NORTHEAST Corner of Section 19, Township 114 N., Range 43 W., 5th P.M.

STATE OF MINNESOTA, County of YELLOW MEDICINE

At the corner location shown on the sketch:

- On 6-21-83 found a 6" x 6" CUT GRANITE STONE, DOWN 18"
DATE
- left monument as found, lowered monument, removed monument (explain)
- On 6-21-83 placed a 1 1/4" x 1 1/4" x 15" PERFORATED STEEL TUBE WITH
DATE
ALUMINUM CAP STAMPED "D.N.R. SURVEY MARKER," OVER STONE, DOWN 3"

SKETCH OF REFERENCE TIES



NOTE:
MONUMENT IS
1' SOUTH OF E-W ROAD
1' WEST OF N-S ROAD

BEARINGS OBSERVED WITH COMPASS

Statement of evidence relative to this corner location is on back of page.

J.B.M. 1-28-86
G-651

I hereby certify that this document and the data contained herein was prepared by me or under my direct supervision.

Bruce W. Sheppard 4-28-86
SIGNATURE DATE

Registration No. 17003

- Land Surveyor, Professional Engineer
- County Surveyor, County Engineer

OFFICE OF THE COUNTY RECORDER
County of Yellow Medicine

I hereby certify that this document was filed in the Co. Recorders office at 9:15 A.M. on the 1 day of May A.D., 19 86

County Recorder Norman J. Opdahl

By Kay Nordahl Deputy
DOCUMENT NO. 188273

SEARCHED
SERIALIZED
INDEXED

Northeast Corner Section 19, Township 114 North, Range 43 West

This corner was originally established by the U. S. General Land Office survey in 1867. The government notes show:

set section post in mound with charred stake and pits

In June 1983, the DNR Bureau of Engineering contacted the Yellow Medicine County Offices of the Recorder and Highway Engineer for corner information.

The following information was obtained from the Recorder's Office:

Surveyor's Book B, introductory page and Page 179 contain a survey by John Norgaard, County Surveyor, in 1901. Survey states "found stake in the government mound, set top of a 6" by 6" by 24" jasper granite level with ground."

The following information was obtained from the DNR Bureau of Engineering's Records:

In 1969, a 6" by 6" chiseled granite stone was found at corner, 1.8 feet below the road surface. The following ties were taken to the corner:

filed nick top center south end 15" CMC, east-southeast,
34.62 feet
filed nick top center north end 15" CMC, east-northeast,
34.35 feet
nail and bottle cap northwest side telephone pole, northeast,
45.68 feet
nail and bottle cap east side mailbox post, south-southeast,
44.50 feet
nail and bottle cap southeast side power pole, southwest,
47.49 feet

On June 21, 1983, the DNR Bureau of Engineering traversed to the area of the corner and found a 6" by 6" cut granite stone down 18 inches. Searched for and found record ties as shown on the sketch of ties.

Accept the granite stone as the location of the corner.

Traverse information is available from the DNR Bureau of Engineering.

282hab/missul

CERTIFICATE OF LOCATION OF GOVERNMENT CORNER

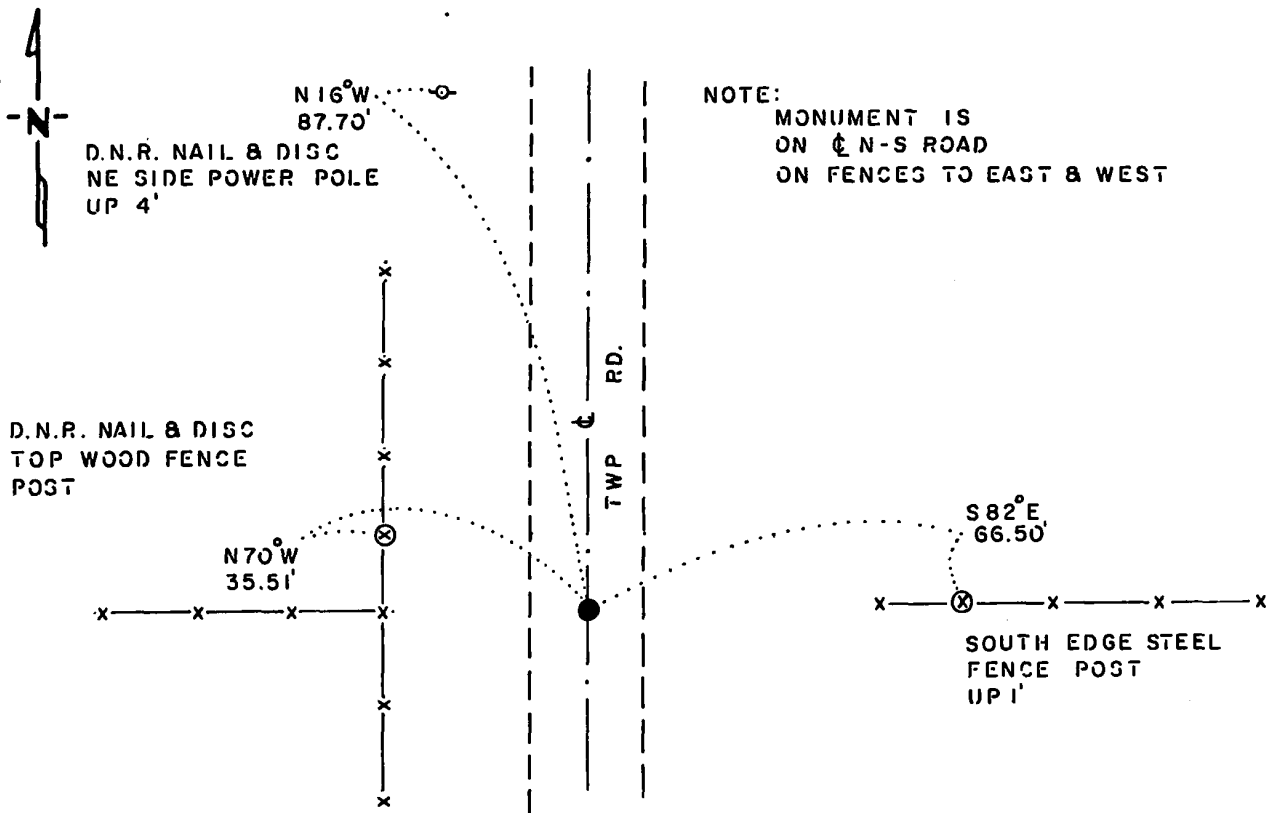
EAST QUARTER Corner of Section 19, Township 114 N., Range 43 W., 5th P.M.

STATE OF MINNESOTA, County of YELLOW MEDICINE

At the corner location shown on the sketch:

- On _____ found a _____
DATE
- left monument as found, lowered monument, removed monument (explain)
- On 11-20-85 placed a 1 1/4" x 1 1/4" x 20" PERFORATED STEEL TUBE WITH
DATE
ALUMINUM CAP STAMPED "D.N.R. SURVEY MARKER", DOWN 0.2'

SKETCH OF REFERENCE TIES



NOTE:
MONUMENT IS
ON $\frac{1}{2}$ N-S ROAD
ON FENCES TO EAST & WEST

BEARINGS OBSERVED WITH COMPASS

Statement of evidence relative to this corner location is on back of page.

J. B. M. 1-28-86
G-651

I hereby certify that this document and the data contained herein was prepared by me or under my direct supervision.

Bruce W. Shippard 4-28-86
SIGNATURE DATE

Registration No. 17003
 Land Surveyor, Professional Engineer
 County Surveyor, County Engineer

OFFICE OF THE COUNTY RECORDER
County of Yellow Medicine

I hereby certify that this document was filed in the Co. Recorders office at 9:10 A.M. on the 1 day of May A.D., 19 86

County Recorder Norman J. Opdahl
By Kay Nordahl, Deputy
DOCUMENT NO. 188272

RECORDED
GRANTEE
GRANTEE
INDEXED

East Quarter Corner Section 19, Township 114 North, Range 43 West

This corner was originally established by the U. S. General Land Office survey in 1867. The government notes show:

set quarter post in mound with charred stake and pits

In June 1983, the DNR Bureau of Engineering contacted the Yellow Medicine County Offices of the Recorder and Highway Engineer for corner information.

The following information was obtained from the Recorder's Office:

Surveyor's Plat Book on Page 190 contains a survey by John Norgaard, County Surveyor, in 1905. Survey states "found stone in the government mound."

The following information was obtained from the DNR Bureau of Engineering's Records:

In 1969, corner was established in line with fences east and west, and on a line from the northeast corner of Section 19 to the southeast corner of Section 19. Survey does not indicate what was set to mark corner. The corner is shown:

2664.00 feet from the northeast corner of Section 19

2646.38 feet from the southeast corner of Section 19

On July 5, 1983, the DNR Bureau of Engineering traversed to the area of the corner and located the center line of a north-south road and fences east and west.

On June 29, 1983, the DNR Bureau of Engineering hired a backhoe operated by Larry Glese, of Porter to dig for evidence of this corner. Dug a hole 12 feet north-south by 8 feet east-west by 18 inches deep the center being on the center line of north-south road and fences east and west. Natural ground was encountered down 9 inches. No monument was found.

Then a temporary point was set on the center line of north-south road in line with fences east and west and was found to be:

2664.55 feet from the northeast corner of Section 19

2647.00 feet from the southeast corner of Section 19

4.87 feet east of a line between adjoining section corners

Accept the temporary point as the location of the corner.

Traverse information is available from the DNR Bureau of Engineering.

283hab/missul

Certificate of Location of Government Corner

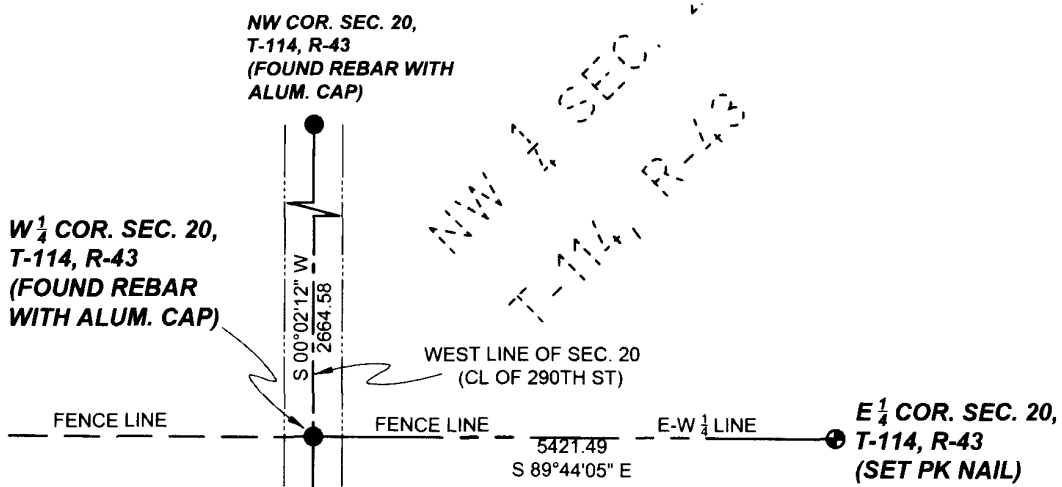
WEST 1/4 Corner of Section 20 Township 114 N Range 43 W 5th P.M.

STATE OF MINNESOTA, County of Yellow Medicine

At the corner location shown on the sketch:

- On 02/22/2017 found an Iron Rebar with aluminum cap _____
- Left monument as found Lowered Monument Removed Monument (explain)

On _____ found a _____

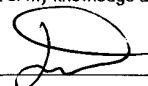


NAD83 (2011 ADJUSTMENT)
 YELLOW MEDICINE COUNTY
 N:145614.72
 E:454937.81

LEGEND
 FOUND IRON MONUMENT
 SET 5/8" REBAR WITH CAP MARKED LS 49506

Statement of evidence relative to this corner location is on back page Drawn By: Jesse Bengtson Checked By: Jesse Bengtson

I hereby certify that this survey, plan, or report was prepared by me or under my direct supervision and that I am a duly Licensed Land Surveyor under the laws of the State of Minnesota; and that this certificate of location of government corner is correct and complete to the best of my knowledge and belief.



 Jesse T. Bengtson LS 49506 Date 3/16/2017

County Surveyor Land Surveyor

OFFICE OF THE COUNTY RECORDER
 County of Yellow Medicine

I hereby certify that this document was filed in the County
 Recorders office at _____ M. on the _____ day of
 _____ A.D., 20 _____.

County Recorder _____
 By _____
 Document No. _____

Statement of Evidence

WEST 1/4 Corner of Section 20 Township 114 N Range 43 W 5th P.M.

STATE OF MINNESOTA, County of Yellow Medicine

1867 - Deputy Surveyor David Watson set $\frac{1}{4}$ post in mound with charred stake and pits.

February 22nd, 2017 - Jesse T. Bengtson performed a survey of the W $\frac{1}{2}$ of the SE $\frac{1}{4}$ and the W $\frac{1}{2}$ of the NE $\frac{1}{4}$ of Section 20. An iron rebar with aluminum cap was found in the centerline of 290th ST. The found rebar fits with a fence line to the East and fence line to the West. The found iron rebar was left as found to mark the accepted location of the government corner.

Doc# 265945 Fee: \$0.00 2 Pages

Property & Public Services

Property Records Division

Yellow Medicine County, Minnesota

I hereby certify that the within instrument
was filed on March 22, 2017 at 10:00 AM

Janel Timm, Yellow Medicine County Recorder

By *Kelly Kauger* Deputy

Certificate of Location of Government Corner

SOUTHEAST Corner of Section 20 Township 114 N Range 43 W 5th P.M.

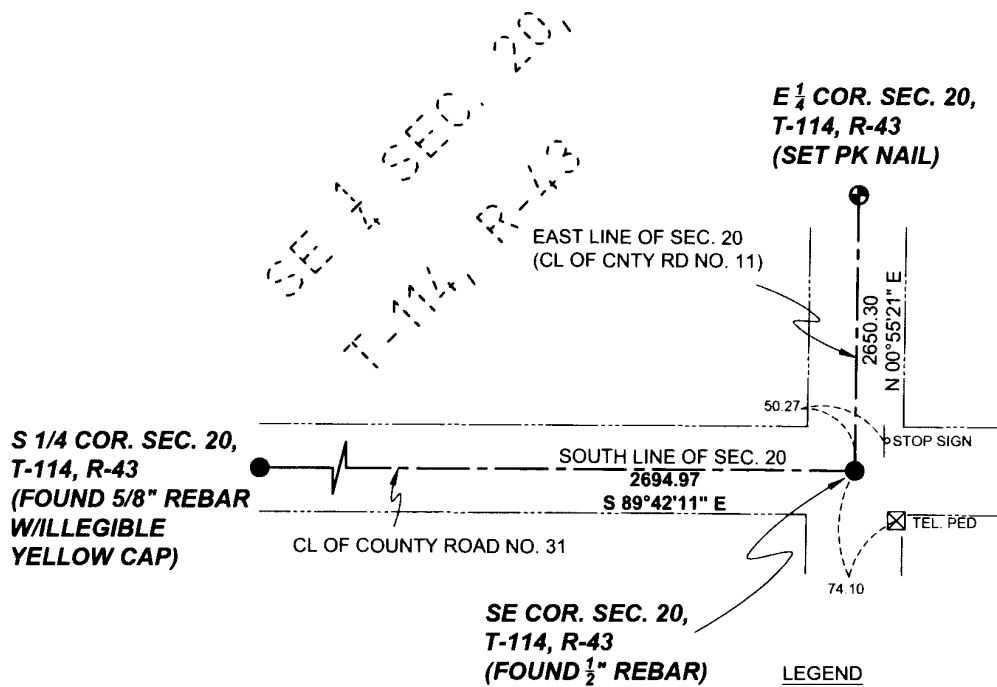
STATE OF MINNESOTA, County of Yellow Medicine

At the corner location shown on the sketch:

On 02/22/2017 found a 1/2" REBAR IN CENTERLINE OF COUNTY ROAD NO. 11 _____

Left monument as found
 Lowered Monument
 Removed Monument (explain)

On _____ found a _____



NAD83 (2011 ADJUSTMENT)
 YELLOW MEDICINE COUNTY
 N:142939.66
 E:460316.57

- LEGEND**
- FOUND IRON MONUMENT
 - ⊕ SET PK NAIL

Statement of evidence relative to this corner location is on back page Drawn By: Jesse Bengtson Checked By: Jesse Bengtson

I hereby certify that this survey, plan, or report was prepared by me or under my direct supervision and that I am a duly Licensed Land Surveyor under the laws of the State of Minnesota; and that this certificate of location of government corner is correct and complete to the best of my knowledge and belief.

 Jesse T. Bengtson LS 49506 Date 3/16/2017

County Surveyor Land Surveyor

OFFICE OF THE COUNTY RECORDER

County of Yellow Medicine

I hereby certify that this document was filed in the County
 Recorders office at _____ M. on the _____ day of
 _____ A.D., 20____.

County Recorder _____
 By _____
 Document No. _____

Statement of Evidence

SOUTHEAST Corner of Section 20 Township 114 N Range 43 W 5th P.M.

STATE OF MINNESOTA, County of Yellow Medicine

1867 - Deputy Surveyor David Watson set $\frac{1}{4}$ post in mound with charred stake and pits.

January 11th, 1995 - Lyle E. Moseng performed a survey in the West $\frac{1}{2}$ of the SE $\frac{1}{4}$ of Section 20 and showed a found monument at the Southeast corner of Section 20. The survey by Moseng showed no distances or ties to the set monument.

February 22nd, 2017 - Jesse T. Bengtson performed a survey of the W $\frac{1}{2}$ of the SE $\frac{1}{4}$ and the W $\frac{1}{2}$ of the NE $\frac{1}{4}$ of Section 20. A 1/2" iron rebar was found at the intersection of the centerline of gravel road (County Road No. 31) and the centerline of a bituminous road (County Road No. 11). The found $\frac{1}{2}$ " iron rebar was left as found to mark the accepted location of the government corner.

Doc# 265944 Fee: \$0.00 2 Pages

Property & Public Services
Property Records Division
Yellow Medicine County, Minnesota
I hereby certify that the within instrument
was filed on March 22, 2017 at 9:55 AM

Janel Timm, Yellow Medicine County Recorder

By Kelly Kauger Deputy

Certificate of Location of Government Corner

SOUTH QUARTER Corner of Section 20 Township 114 N Range 43 W 5th P.M.

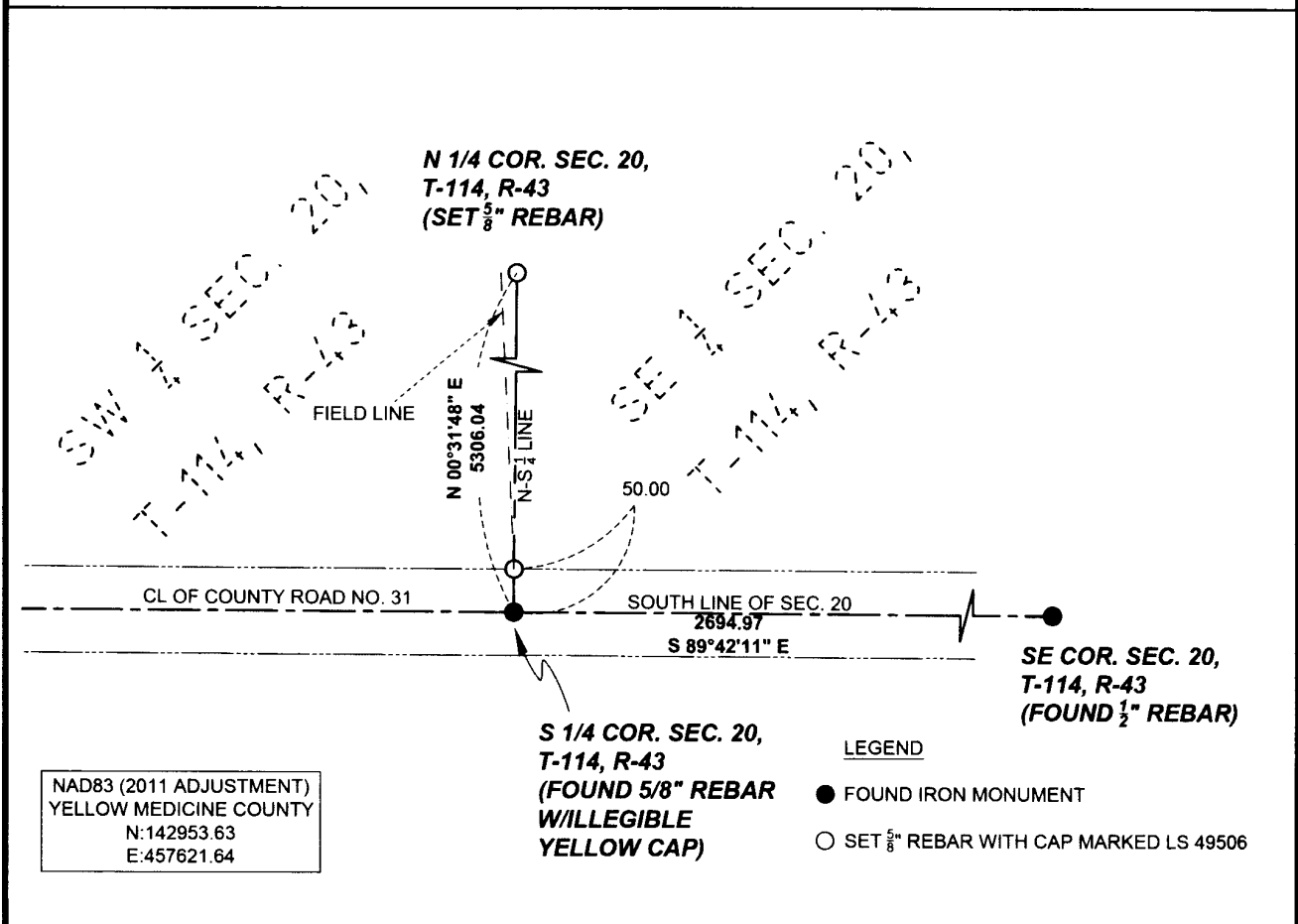
STATE OF MINNESOTA, County of Yellow Medicine

At the corner location shown on the sketch:

On 02/22/2017 found a 3/4" IRON REBAR WITH ILLEGIBLE YELLOW CAP

Left monument as found Lowered Monument Removed Monument (explain)

On _____ found a _____



Statement of evidence relative to this corner location is on back page Drawn By: Jesse Bengtson Checked By: Jesse Bengtson

I hereby certify that this survey, plan, or report was prepared by me or under my direct supervision and that I am a duly Licensed Land Surveyor under the laws of the State of Minnesota; and that this certificate of location of government corner is correct and complete to the best of my knowledge and belief.

Jesse P. Bengtson LS 49506 Date 3/16/2017

County Surveyor Land Surveyor

OFFICE OF THE COUNTY RECORDER
County of Yellow Medicine

I hereby certify that this document was filed in the County
Recorders office at _____ M. on the _____ day of
_____ A.D., 20 _____.

County Recorder _____
By _____
Document No. _____

Statement of Evidence

SOUTH QUARTER Corner of Section 20 Township 114 N Range 43 W 5th P.M.

STATE OF MINNESOTA, County of Yellow Medicine

1867 - Deputy Surveyor David Watson set $\frac{1}{4}$ post in mound with charred stake and pits.

January 11th, 1995 - Lyle E. Moseng performed a survey in the West $\frac{1}{2}$ of the SE $\frac{1}{4}$ of Section 20 and set a $\frac{5}{8}$ " Iron stake at the South $\frac{1}{4}$ corner of Section 20. The survey by Moseng showed no distances or ties to the set monument.

February 22nd, 2017 - Jesse T. Bengtson performed a survey of the W $\frac{1}{2}$ of the SE $\frac{1}{4}$ and the W $\frac{1}{2}$ of the NE $\frac{1}{4}$ of Section 20. A 5/8" iron rebar with an illegible yellow cap was found in the centerline of gravel road (County Road No. 31). Its position fits with a field line to the North. The North-South Quarter line fits the old fence line/old field line at both the North Quarter corner and the South Quarter corner. However, said Field line does not run in a straight line, it protrudes westerly approximately 20 feet in the center of the section. The found iron rebar was left as found to mark the accepted location of the government corner.

Doc# 265943 Fee: \$0.00 2 Pages

Property & Public Services
Property Records Division
Yellow Medicine County, Minnesota
I hereby certify that the within instrument
was filed on March 22, 2017 at 9:50 AM

Janel Timm, Yellow Medicine County Recorder

By Kelly Kauger Deputy

Certificate of Location of Government Corner

NORTHWEST Corner of Section 20 Township 114 N Range 43 W 5th P.M.

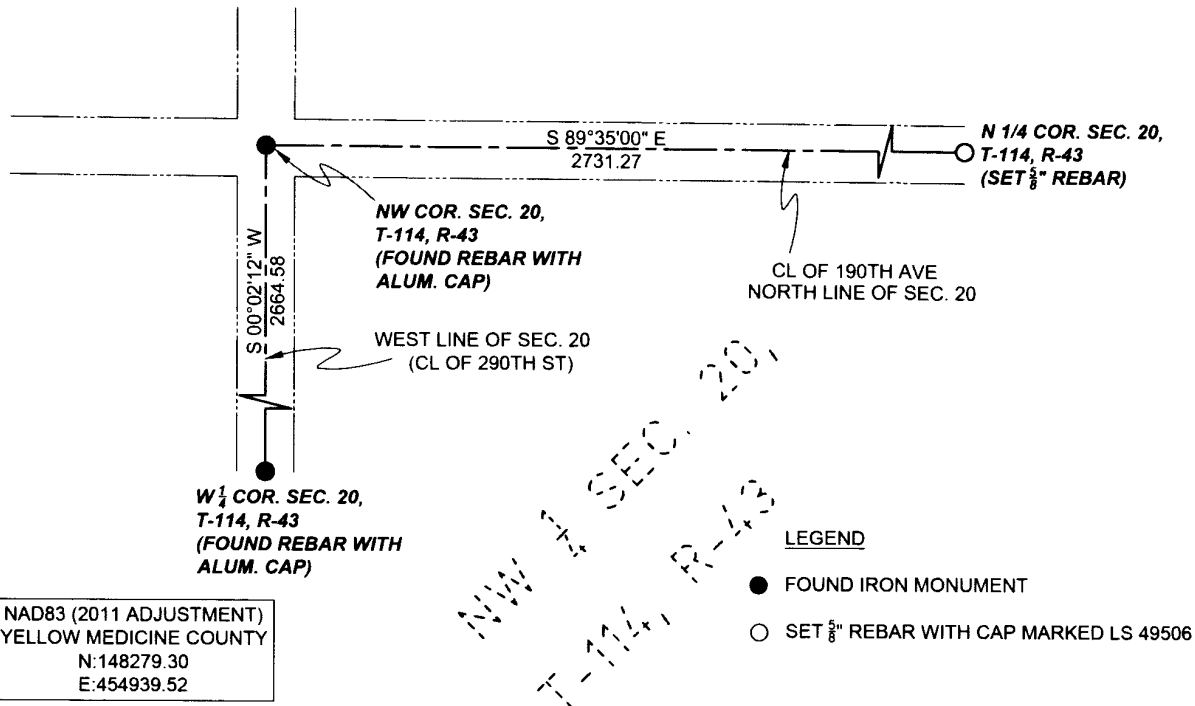
STATE OF MINNESOTA, County of Yellow Medicine

At the corner location shown on the sketch:

On 02/22/2017 found a IRON REBAR WITH ALUMINUM CAP

Left monument as found Lowered Monument Removed Monument (explain)

On _____ found a _____



Statement of evidence relative to this corner location is on back page

Drawn By: Jesse Bengtson

Checked By: Jesse Bengtson

I hereby certify that this survey, plan, or report was prepared by me or under my direct supervision and that I am a duly Licensed Land Surveyor under the laws of the State of Minnesota; and that this certificate of location of government corner is correct and complete to the best of my knowledge and belief.

3/16/2017

Jesse T. Bengtson LS 49506

Date

County Surveyor Land Surveyor

OFFICE OF THE COUNTY RECORDER

County of Yellow Medicine

I hereby certify that this document was filed in the County
 Recorders office at _____ M. on the _____ day of
 _____ A.D., 20_____.

County Recorder _____

By _____

Document No. _____

Statement of Evidence

NORTHWEST Corner of Section 20 Township 114 N Range 43 W 5th P.M.

STATE OF MINNESOTA, County of Yellow Medicine

1867 - Deputy Surveyor David Watson set $\frac{1}{4}$ post in mound with charred stake and pits.

February 22nd, 2017 - Jesse T. Bengtson performed a survey of the $W \frac{1}{2}$ of the $SE \frac{1}{4}$ and the $W \frac{1}{2}$ of the $NE \frac{1}{4}$ of Section 20. An iron rebar with aluminum cap was found at the intersection of the centerline of gravel road (290TH ST and 190TH AVE). The found iron rebar was left as found to mark the accepted location of the government corner.

Doc# 265942 Fee: \$0.00 2 Pages

Property & Public Services
Property Records Division
Yellow Medicine County, Minnesota
I hereby certify that the within instrument
was filed on March 22, 2017 at 9:45 AM

Janel Timm, Yellow Medicine County Recorder

By Kelley Kauger Deputy

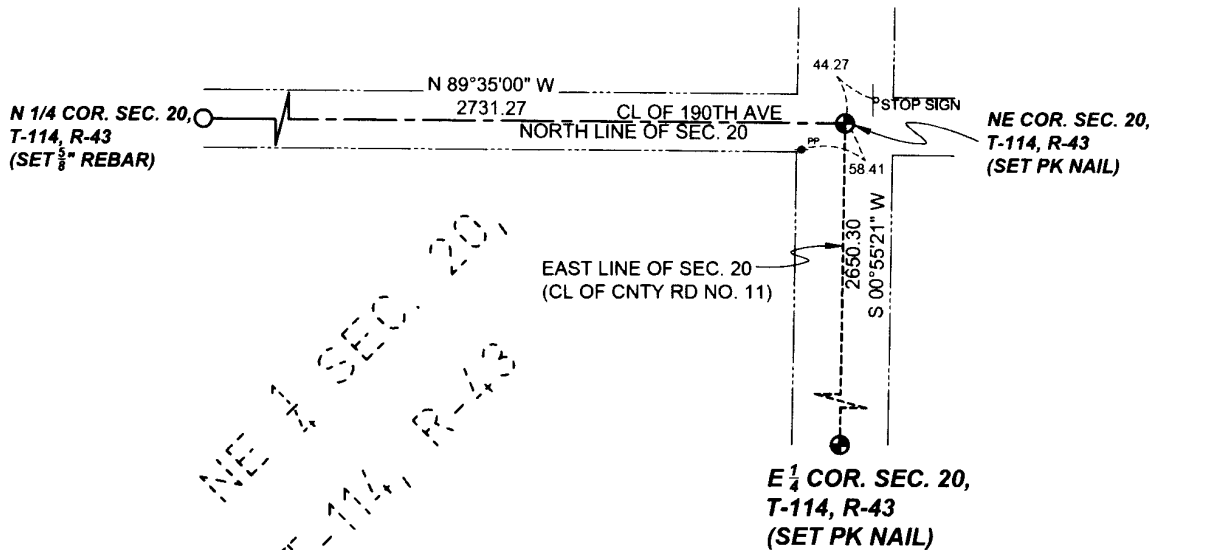
Certificate of Location of Government Corner

NORTHEAST Corner of Section 20 Township 114 N Range 43 W 5th P.M.

STATE OF MINNESOTA, County of Yellow Medicine

At the corner location shown on the sketch:

- On _____ found a _____
- Left monument as found
 Lowered Monument
 Removed Monument (explain)
- On 02/22/2017 set a PK NAIL



NAD83 (2011 ADJUSTMENT)
 YELLOW MEDICINE COUNTY
 N: 148239.58
 E: 460401.91

- LEGEND**
- FOUND IRON MONUMENT
 - SET 5/8" REBAR WITH CAP MARKED LS 49506
 - ⊕ SET PK NAIL

Statement of evidence relative to this corner location is on back page Drawn By: Jesse Bengtson Checked By: Jesse Bengtson

I hereby certify that this survey, plan, or report was prepared by me or under my direct supervision and that I am a duly Licensed Land Surveyor under the laws of the State of Minnesota, and that this certificate of location of government corner is correct and complete to the best of my knowledge and belief.

_____ 3/16/2017
 Jesse T. Bengtson LS 49506 Date

County Surveyor Land Surveyor

OFFICE OF THE COUNTY RECORDER

County of Yellow Medicine

I hereby certify that this document was filed in the County
 Records office at _____ M. on the _____ day of
 _____ A.D., 20____.

County Recorder _____
 By _____
 Document No. _____

Statement of Evidence

NORTHEAST Corner of Section 20 Township 114 N Range 43 W 5th P.M.

STATE OF MINNESOTA, County of Yellow Medicine

1867 - Deputy Surveyor David Watson set $\frac{1}{4}$ post in mound with charred stake and pits.

February 22nd, 2017 - Jesse T. Bengtson performed a survey of the $W\frac{1}{2}$ of the $SE\frac{1}{4}$ and the $W\frac{1}{2}$ of the $NE\frac{1}{4}$ of Section 20. Set a PK Nail at the intersection of the centerline of 190TH AVE. and the centerline of County Road No. 11.

Doc# 265941 Fee: \$0.00 2 Pages

Property & Public Services

Property Records Division

Yellow Medicine County, Minnesota

I hereby certify that the within instrument

was filed on March 22, 2017 at 9:40 AM

Janel Timm, Yellow Medicine County Recorder

By Kelly Kuger Deputy

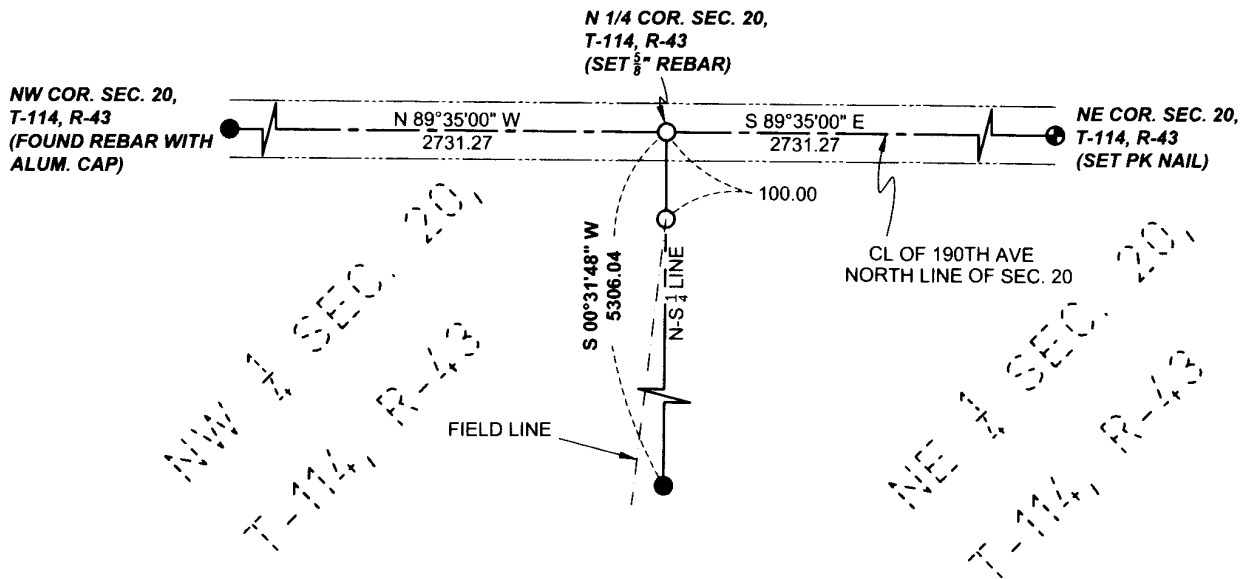
Certificate of Location of Government Corner

NORTH 1/4 Corner of Section 20 Township 114 N Range 43 W 5th P.M.

STATE OF MINNESOTA, County of Yellow Medicine

At the corner location shown on the sketch:

- On _____ found a _____
- Left monument as found
 Lowered Monument
 Removed Monument (explain)
- On 02/22/2017 set a $\frac{5}{8}$ " IRON REBAR WITH PLASTIC CAP MARKED LS 49506



LEGEND

- FOUND IRON MONUMENT
- SET $\frac{5}{8}$ " REBAR WITH CAP MARKED LS 49506
- ⊕ SET PK NAIL

NAD83 (2011 ADJUSTMENT)
 YELLOW MEDICINE COUNTY
 N:148259.44
 E:457670.72

Statement of evidence relative to this corner location is on back page

Drawn By: Jesse Bengtson

Checked By: Jesse Bengtson

I hereby certify that this survey, plan, or report was prepared by me or under my direct supervision and that I am a duly Licensed Land Surveyor under the laws of the State of Minnesota, and that this certificate of location of government corner is correct and complete to the best of my knowledge and belief.

3/16/2017

Jesse T. Bengtson LS 49506

Date

- County Surveyor Land Surveyor

OFFICE OF THE COUNTY RECORDER

County of Yellow Medicine

I hereby certify that this document was filed in the County

Recorders office at _____ M. on the _____ day of

_____ A.D., 20_____.

County Recorder _____

By _____

Document No. _____

Statement of Evidence

NORTH 1/4 Corner of Section 20 Township 114 N Range 43 W 5th P.M.

STATE OF MINNESOTA, County of Yellow Medicine

1867 - Deputy Surveyor David Watson set $\frac{1}{4}$ post in mound with charred stake and pits.

February 22nd, 2017 - Jesse T. Bengtson performed a survey of the $W \frac{1}{2}$ of the $SE \frac{1}{4}$ and the $W \frac{1}{2}$ of the $NE \frac{1}{4}$ of Section 20. Set a $\frac{5}{8}$ " Rebar using single proportion between the Northeast corner and Northwest corner of Section 20. Position fits with a field line to the south. The North-South Quarter line fits the old fence line/old field line at both the North Quarter corner and the South Quarter corner. However, said Field line does not run in a straight line, it protrudes westerly approximately 20 feet in the center of the section.

Doc# 265940 Fee: \$0.00 2 Pages

Property & Public Services

Property Records Division

Yellow Medicine County, Minnesota

I hereby certify that the within instrument
was filed on March 22, 2017 at 9:35 AM

Janel Timm, Yellow Medicine County Recorder

By Kelly Kauger Deputy

Certificate of Location of Government Corner

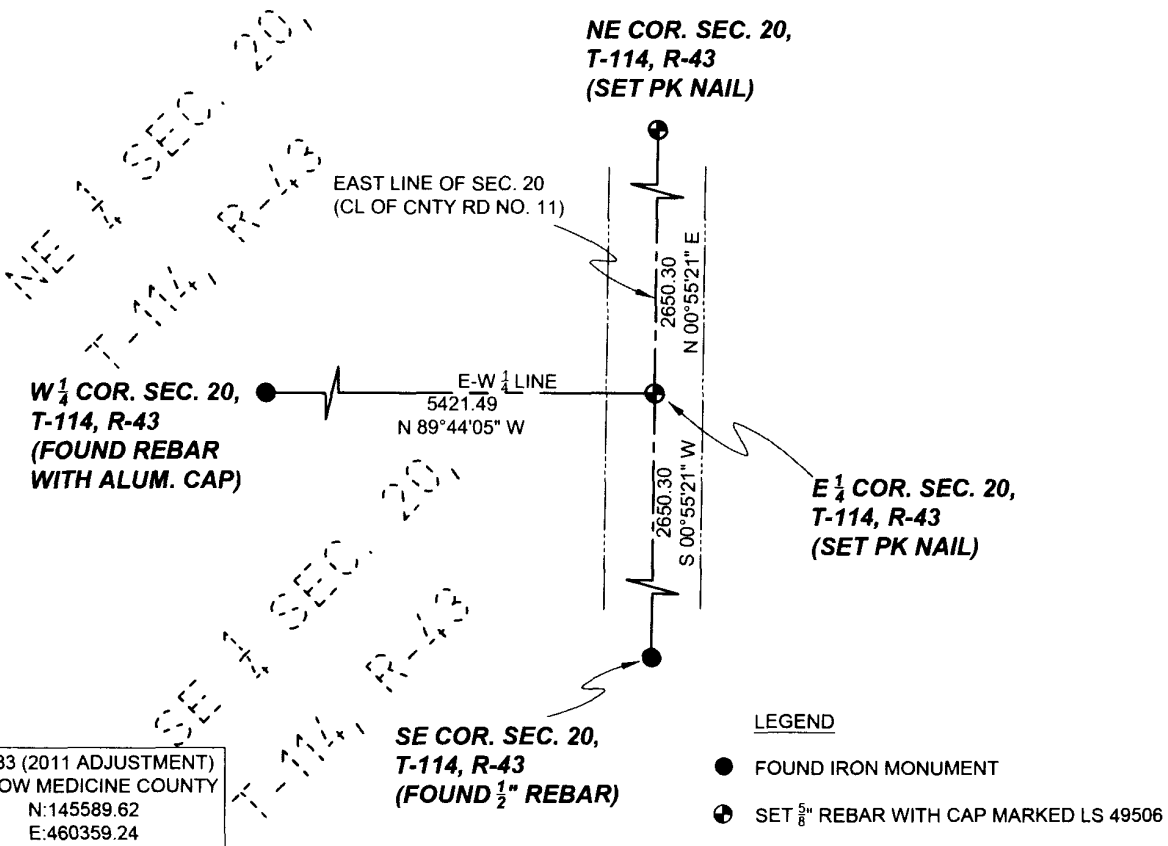
EAST 1/4 Corner of Section 20 Township 114 N Range 43 W 5th P.M.

STATE OF MINNESOTA, County of Yellow Medicine

At the corner location shown on the sketch:

- On _____ found a _____
- Left monument as found
 Lowered Monument
 Removed Monument (explain)

On 02/22/2017 set a PK NAIL



Statement of evidence relative to this corner location is on back page Drawn By: Jesse Bengtson Checked By: Jesse Bengtson

I hereby certify that this survey, plan, or report was prepared by me or under my direct supervision and that I am a duly Licensed Land Surveyor under the laws of the State of Minnesota; and that this certificate of location of government corner is correct and complete to the best of my knowledge and belief.

_____ 3/16/2017
 Jesse T. Bengtson LS 49506 Date

County Surveyor Land Surveyor

OFFICE OF THE COUNTY RECORDER

County of Yellow Medicine

I hereby certify that this document was filed in the County
 Recorders office at _____ M. on the _____ day of
 _____ A.D., 20____.

County Recorder _____
 By _____
 Document No. _____

Statement of Evidence

EAST 1/4 Corner of Section 20 Township 114 N Range 43 W 5th P.M.

STATE OF MINNESOTA, County of Yellow Medicine

1867 - Deputy Surveyor David Watson set $\frac{1}{4}$ post in mound with charred stake and pits.

February 22nd, 2017 - Jesse T. Bengtson performed a survey of the $W \frac{1}{2}$ of the $SE \frac{1}{4}$ and the $W \frac{1}{2}$ of the $NE \frac{1}{4}$ of Section 20. Set a PK Nail using single proportion from the NE corner and SE corners of Section 20. Position fits occupation lines within the East-West Quarter line in Section 20 and the East-West Quarter line in Section 21.

Doc# 265939 Fee: \$0.00 2 Pages

Property & Public Services

Property Records Division

Yellow Medicine County, Minnesota

I hereby certify that the within instrument

was filed on March 22, 2017 at 9:30 AM

Janel Timm, Yellow Medicine County Recorder

By Kelly Kauger Deputy

CERTIFICATE OF LOCATION OF GOVERNMENT CORNER

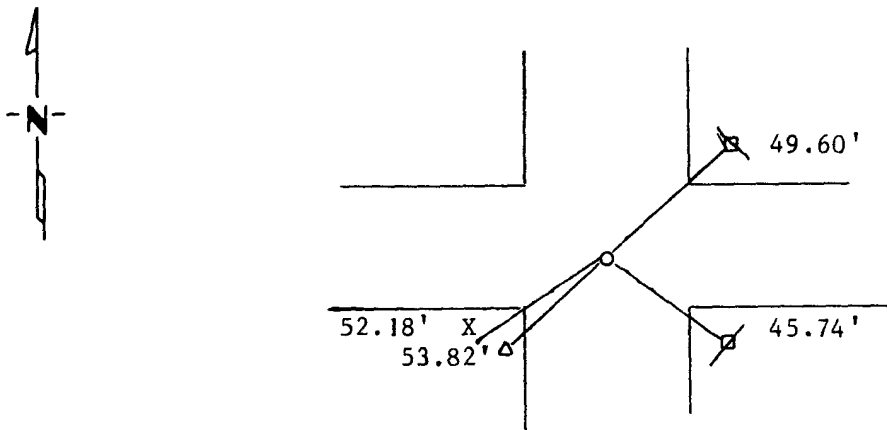
Northeast _____ Corner of Section 22, Township 114N, Range 43W, 5th P.M.

STATE OF MINNESOTA, County of Yellow Medicine

At the corner location shown on the sketch:

- On _____ found a _____
DATE
- left monument as found, lowered monument, removed monument (explain)
- On 3/30/89 placed a 1 1/2" iron pipe. Dug with jack hammer, 18" gravel, 6" black dirt then clay. Area is a cut area. Set by splitting roads and occupational lines.
DATE

SKETCH OF REFERENCE TIES



- Nail and Seal in Power Pole NE 49.60'
- Nail and Seal in Power Pole SE 45.74'
- Nail and Seal in Wooden Post SW 52.18'
- Top of Telephone Pedastel SW 53.82'

Statement of evidence relative to this corner location is on back of page.

I hereby certify that this document and the data contained herein was prepared by me or under my direct supervision.

Ray E. Mooney Jan 10, 1991
SIGNATURE DATE

Registration No. 11940
 Land Surveyor, Professional Engineer
 County Surveyor, County Engineer

OFFICE OF THE COUNTY RECORDER
 County of Yellow Medicine

I hereby certify that this document was filed in the Co. Recorders office at 3:05 P.M. on the 2nd day of February A.D., 19 95

County Recorder Norman J. Opdahl
 By Kay Nordahl, Deputy
 DOCUMENT NO. 208536

Statement of Evidence:

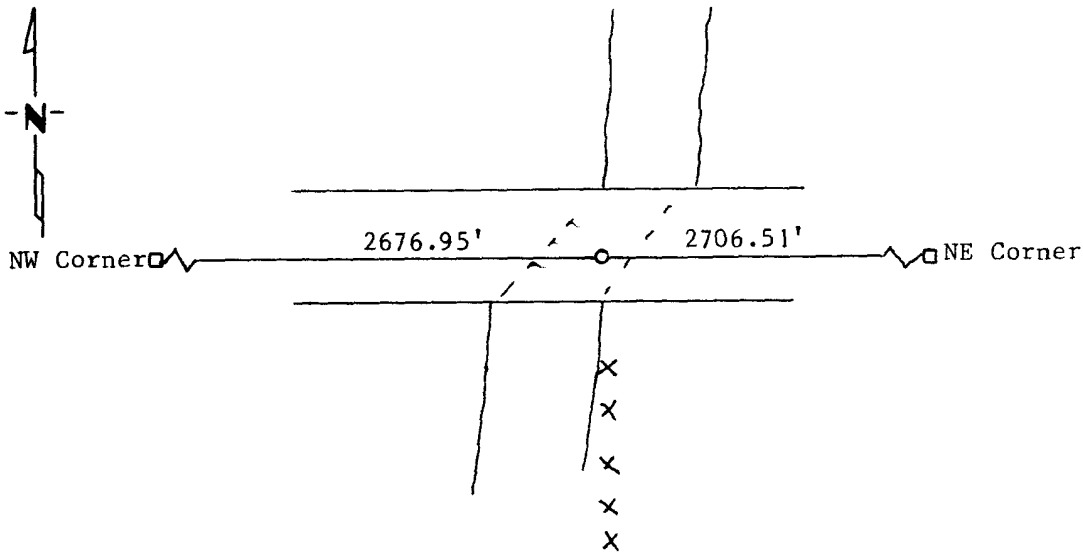
CERTIFICATE OF LOCATION OF GOVERNMENT CORNER

North Quarter Corner of Section 23, Township 114N, Range 43W, 5th P.M.
STATE OF MINNESOTA, County of Yellow Medicine

At the corner location shown on the sketch:

- On _____ found a _____
DATE
- left monument as found, lowered monument, removed monument (explain)
- On 3/30/89 placed a 1 1/2" iron pipe, on line and with old wooden fence line
DATE
to South Collins the farmer in NW 1/4 said ditch to South was all on his land.

SKETCH OF REFERENCE TIES



Statement of evidence relative to this corner location is on back of page.

I hereby certify that this document and the data contained herein was prepared by me or under my direct supervision.

Ayle C. Mosey Jan 10, 1991
SIGNATURE DATE

Registration No. 119430
 Land Surveyor, Professional Engineer
 County Surveyor, County Engineer

OFFICE OF THE COUNTY RECORDER

County of Yellow Medicine

I hereby certify that this document was filed in the Co. Recorders office at 3:00 P.M. on the 2nd day of February A.D., 19 95

County Recorder Norman J. Opdahl

By Kay Nordgren, Deputy

DOCUMENT NO. 208535

Statement of Evidence:

CERTIFICATE OF LOCATION OF GOVERNMENT CORNER

NORTH QUARTER Corner of Section 28, Township 114, Range 43, 5TH P.M.

STATE OF MINNESOTA, County of YELLOW MEDICINE

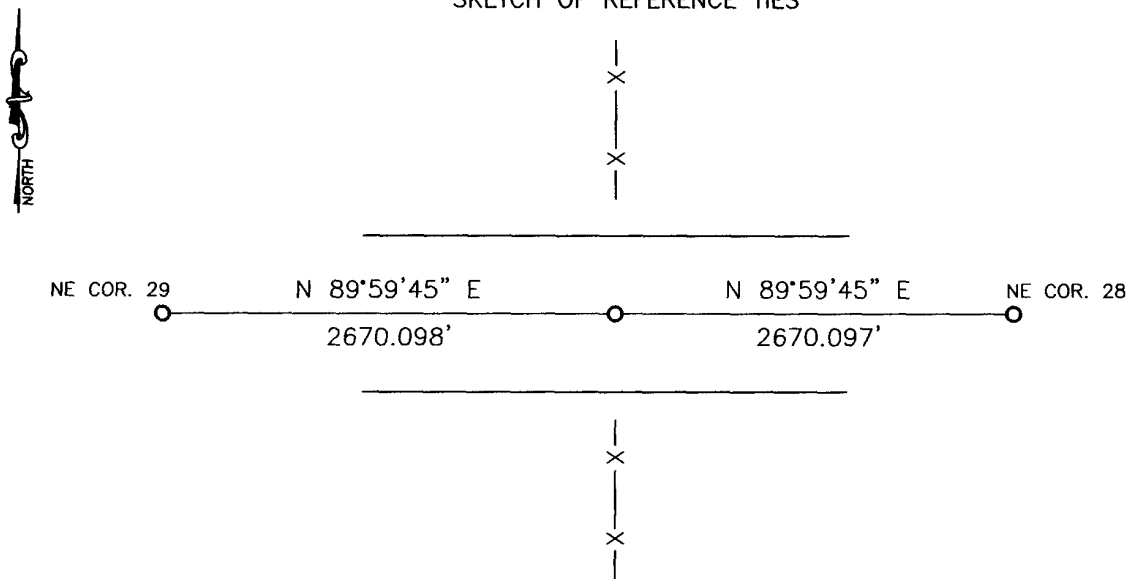
At the corner location shown on the sketch:

On _____ found a _____
DATE

left monument as found, lowered monument, removed monument (explain)

On 05-02-2013 placed a 5/8" iron with seal #43844
DATE

SKETCH OF REFERENCE TIES

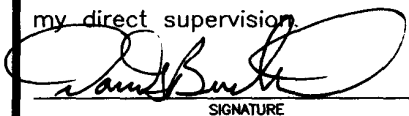


Minnesota State Plane Coordinate
System Yellow Medicine County Datum
NAD83 (1996)

N: 142939.849
E: 426986.575

Statement of evidence relative to this corner location is on back of page.

I hereby certify that this document and the data contained herein was prepared by me or under my direct supervision.


SIGNATURE

6/3/13
DATE

Registration No. 43844

Land Surveyor, Professional Engineer
 County Surveyor, County Engineer

OFFICE OF THE COUNTY RECORDER

County of _____

I hereby certify that this document was filed in the Co. Recorders office at _____ .M on the _____ day of _____ A.D. 20 _____

County Recorder _____

By _____, Deputy

DOCUMENT NO. _____

Statement of Evidence

In 1867, David Watson did the original subdivision of the township.

On May 2, 2013, Bueltel-Moseng Land Surveying set a $\frac{5}{8}$ " iron with seal \$43844 midway and online between section corners, in centerline and in line with occupation lines to the North and South.

Doc# 259456 Fee: \$0.00 2 Pages

Property & Public Services
Property Records Division
Yellow Medicine County, Minnesota

I hereby certify that the within instrument
was filed on February 6, 2014 at 10:40 AM

Janel Timm, Yellow Medicine County Recorder

By Jane Rohrk Deputy

CERTIFICATE OF LOCATION OF GOVERNMENT CORNER

EAST QUARTER Corner of Section 28, Township 114, Range 43, 5TH P.M.

STATE OF MINNESOTA, County of YELLOW MEDICINE

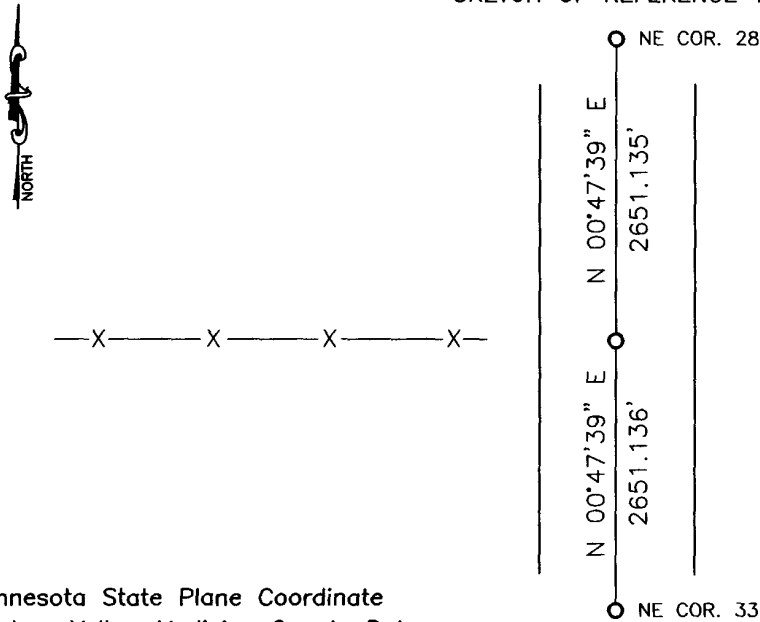
At the corner location shown on the sketch:

On _____ found a _____
DATE

left monument as found, lowered monument, removed monument (explain)

On 05-02-2013 placed a 5/8" iron with seal #43844
DATE

SKETCH OF REFERENCE TIES



Minnesota State Plane Coordinate
System Yellow Medicine County Datum
NAD83 (1996)

N: 140289.168
E: 465619.922

Statement of evidence relative to this corner location is on back of page.

I hereby certify that this document and the data contained herein was prepared by me or under my direct supervision

[Signature] 6/13/13
SIGNATURE DATE

Registration No. 43844

Land Surveyor, Professional Engineer
 County Surveyor, County Engineer

OFFICE OF THE COUNTY RECORDER

County of _____

I hereby certify that this document was filed in the Co. Recorders office at _____ .M on the _____ day of _____ A.D. 20 _____

County Recorder _____

By _____, Deputy

DOCUMENT NO. _____

Statement of Evidence

In 1867, David Watson did the original subdivision of the township.

On May 2, Bueltel-Moseng Land Surveying set a $\frac{5}{8}$ " iron with seal #43844 midway and on line between section corners. In center line and in line with fence to the West.

Doc# 259455 Fee: \$0.00 2 Pages

Property & Public Services
Property Records Division
Yellow Medicine County, Minnesota

I hereby certify that the within instrument
was filed on February 6, 2014 at 10:35 AM

Janel Timm, Yellow Medicine County Recorder

By Jane Lehtik Deputy

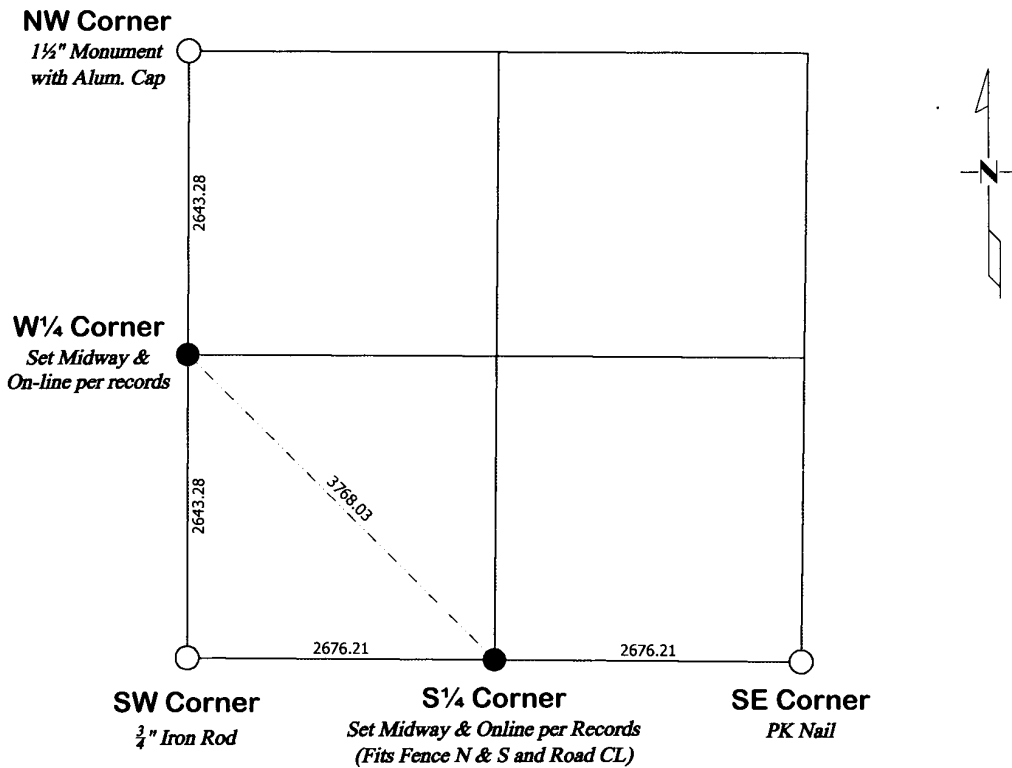
CERTIFICATE OF LOCATION OF GOVERNMENT CORNERS

Land Survey Monuments situated in Section 29, Township 114, Range 43 West of the Fifth Principal Meridian, **Yellow Medicine** County, State of Minnesota.

Statement of Evidence:

1867 - Original Government Land Office Survey 1928 - County Survey Record Book, Page 515
 1900's - County Survey Record Book B, Page 37
 1900's - County Survey Record Book B, Page 180
 1900's - County Survey Record Book B, Page 181
 1920 - County Survey Record Book, Page 429
 Unknown - County Survey Record Book, Page 453

○ Found Monument from former survey ● Placed "46169 46171" Capped Iron Monument



Corners to be Indexed

Corner	Section	Township	Range
W 1/4	29	114	43
S 1/4	29	114	43

Doc# 262783 Fee: \$0.00 1 Pages
 Property & Public Services
 Property Records Division
 Yellow Medicine County, Minnesota
 I hereby certify that the within instrument was filed on October 1, 2015 at 9:40 AM

Janel Timm, Yellow Medicine County Recorder

By Kelley Kueger Deputy

I hereby certify that this survey, plan, or report was prepared by me or under my direct supervision and that I am a duly Licensed Land Surveyor under the laws of the state of Minnesota.

Matthew D. Runke 9/29/15
 Signature Date

Matthew D. Runke - LS 46171

(reserved for recording data)

CERTIFICATE OF LOCATION OF GOVERNMENT CORNER

EAST QUARTER Corner of Section 29, Township 114, Range 43, 5TH P.M.

STATE OF MINNESOTA, County of YELLOW MEDICINE

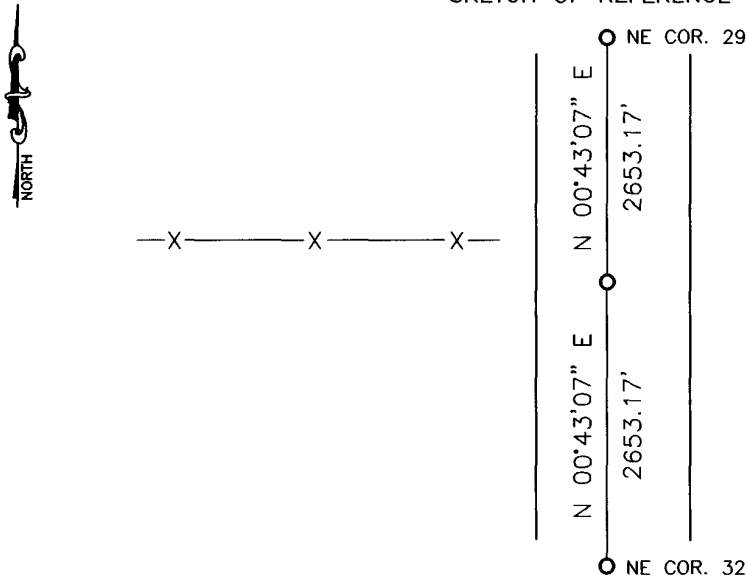
At the corner location shown on the sketch:

On _____ found a _____
DATE

left monument as found, lowered monument, removed monument (explain)

On 05-02-2013 placed a 3" survey spike with seal #43844
DATE

SKETCH OF REFERENCE TIES



Minnesota State Plane Coordinate
System Yellow Medicine County Datum
NAD83 (1996)

N: 140286.688
E: 460283.206

Statement of evidence relative to this corner location is on back of page.

I hereby certify that this document and the data contained herein was prepared by me or under my direct supervision.

[Signature] 6/3/13
SIGNATURE DATE

Registration No. 43844

Land Surveyor, Professional Engineer
 County Surveyor, County Engineer

OFFICE OF THE COUNTY RECORDER
County of _____

I hereby certify that this document was filed in the Co. Recorders office at _____ .M on the _____ day of _____ A.D. 20 _____

County Recorder _____

By _____, Deputy

DOCUMENT NO. _____

Statement of Evidence

In 1867, David Watson did the original subdivision of the township.

On May 2, 2013, Bueltel-Moseng Land Surveying set a 3" survey spike with seal #43844 midway and on line between section corners. The corner is 2 feet south of fence to the west.

Doc# 259457 Fee: \$0.00 2 Pages

Property & Public Services
Property Records Division
Yellow Medicine County, Minnesota

I hereby certify that the within instrument
was filed on February 6, 2014 at 10:45 AM

Janel Timm, Yellow Medicine County Recorder

By Janel Rohlik Deputy

CERTIFICATE OF LOCATION OF GOVERNMENT CORNER

North Quarter _____ Corner of Section 29, Township 114, Range 43, 5th P.M.

STATE OF MINNESOTA, County of Yellow Medicine

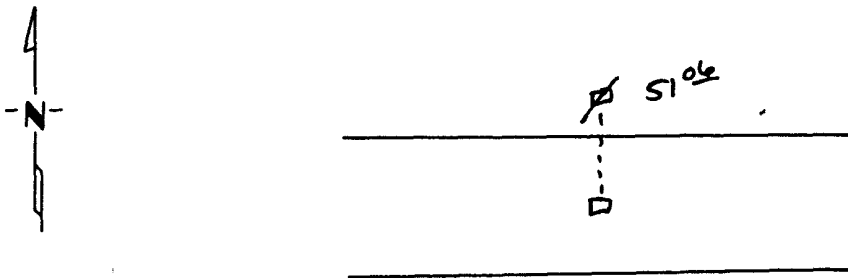
At the corner location shown on the sketch:

On _____ found a _____
DATE

left monument as found, lowered monument, removed monument (explain)

On Dec. 27, 1994 placed a 1" iron pipe w/seal #11943 (see back)
DATE

SKETCH OF REFERENCE TIES



Nail & seal in power pole N 51.06'

Statement of evidence relative to this corner location is on back of page.

I hereby certify that this document and the data contained herein was prepared by me or under my direct supervision.

Steve C. Mosing 4-12-95
SIGNATURE DATE

Registration No. 11943
 Land Surveyor, Professional Engineer
 County Surveyor, County Engineer

OFFICE OF THE COUNTY RECORDER

County of Yellow Medicine

I hereby certify that this document was filed in the Co. Recorders office at 10:00 A.M. on the 30 day of June A.D., 19 95

County Recorder Donald Spolark

By _____, Deputy

DOCUMENT NO. 209407

Statement of Evidence:

John Norgaard (County Surveyor who resurveyed Yellow Medicine County in the early 1900s) always established the quarter corners midway and on line between the section corners.

I found no record of a corner and did not dig. I set the corner midway and on line between the section corners.

CERTIFICATE OF LOCATION OF GOVERNMENT CORNER

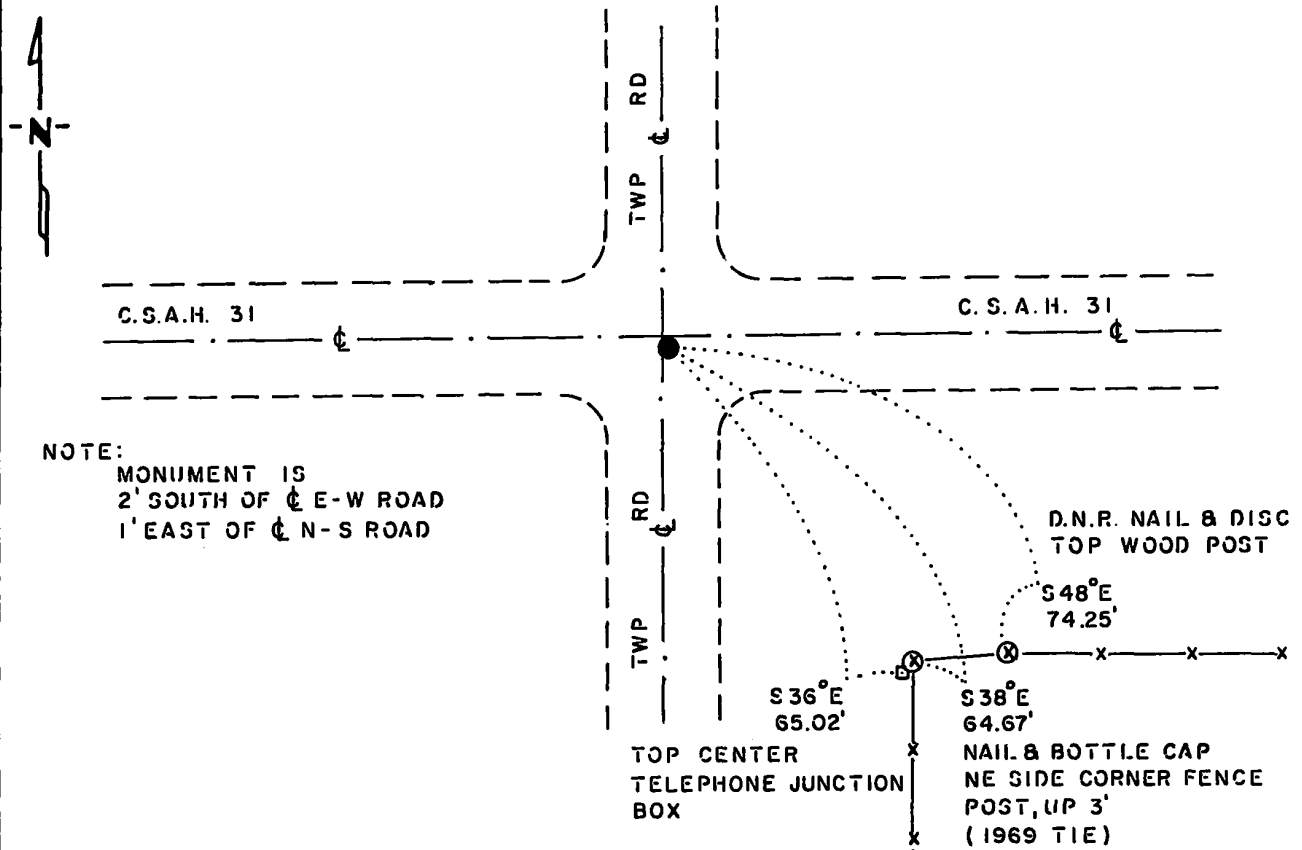
NORTHEAST Corner of Section 30, Township 114 N., Range 43 W., 5th P.M.

STATE OF MINNESOTA, County of YELLOW MEDICINE

At the corner location shown on the sketch:

- On 6-21-83 found a 6"x6" CUT GRANITE STONE, DOWN 24"
DATE
- left monument as found, lowered monument, removed monument (explain)
- On 6-21-83 placed a 1 1/4"x 1 1/4"x 20" PERFORATED STEEL TUBE WITH
DATE
ALUMINUM CAP STAMPED "D.N.R. SURVEY MARKER", OVER STONE, DOWN 4"

SKETCH OF REFERENCE TIES



NOTE:
 MONUMENT IS
 2' SOUTH OF ϵ E-W ROAD
 1' EAST OF ϵ N-S ROAD

BEARINGS OBSERVED WITH COMPASS

Statement of evidence relative to this corner location is on back of page.

J.B.M. 9-16-83
G-651

I hereby certify that this document and the data contained herein was prepared by me or under my direct supervision.

Bruce W. Shuped 4-28-86
SIGNATURE DATE

Registration No. 17003

- Land Surveyor, Professional Engineer
- County Surveyor, County Engineer

OFFICE OF THE COUNTY RECORDER

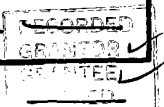
County of Yellow Medicine

I hereby certify that this document was filed in the Co. Recorders office at 9:30 A.M. on the 1 day of May A.D., 1986

County Recorder Norman J. Opdahl

By Kay Nordahl, Deputy

DOCUMENT NO. 188276



Northeast Corner Section 30, Township 114 North, Range 43 West

This corner was originally established by the U. S. General Land Office survey in 1867. The government notes show:

set section post in mound with charred stake and pits

In June 1983, the DNR Bureau of Engineering contacted the Yellow Medicine County Offices of the Recorder and Highway Engineer for corner information.

The following information was obtained from the Recorder's Office:

Surveyor's Book B, introductory page, Page 37 and Page 180 contain a survey by John Norgaard, County Surveyor, in 1901. Survey shows that a 6" by 6" by 24" jasper granite was set at corner:

2644 feet from the east quarter corner of Section 30

2644 feet from the east quarter corner of Section 19

in the center of a north-south road

The following information was obtained from the Highway Engineer's Office:

Section Corner Book, date not indicated, shows corner but does not state what was found or set. The following ties are shown to corner:

third fence post, northwest, 68.0 feet

second fence post, southwest, 55.3 feet

third fence post, southeast, 64.2 feet

Section Corner Book, dated April 1, 1957, shows that an iron pin was set for an assumed corner and the following ties were taken:

power pole, northwest, 45.0 feet

fence post, southwest, 82.3 feet

power pole, southeast, 43.4 feet

Section Corner Book, dated October 28, 1965, shows that a granite monument was found at corner 30 inches below the road surface. The following ties are shown to corner:

power pole, northwest, 45.70 feet

power pole, southeast, 42.95 feet

corner fence post, northeast, 51.15 feet

spike in road, north, 100.0 feet

The following information was obtained from the DNR Bureau of Engineering's Records:

In 1969, a 6" by 6" chiseled stone was found at corner, 2.0 feet below the road surface. The following ties were taken to the corner:

nail and bottle cap top first fence post north, north-northeast, 69.3 feet

nail and bottle cap top east gatepost, northeast, 82.53 feet

nail and bottle cap northeast side corner fence post, southeast, 64.50 feet

On June 21, 1983, the DNR Bureau of Engineering traversed to the area of the corner and found a 6" by 6" cut granite stone down 24 inches. Searched for and found record ties as shown on sketch of ties. The granite stone was found to be:

2647.00 feet from the east quarter corner of Section 19

Accept the granite stone as the location of the corner.

Traverse information is available from the DNR Bureau of Engineering.

285hab/missul

CERTIFICATE OF LOCATION OF GOVERNMENT CORNER

NORTH QUARTER Corner of Section 30, Township 114 N., Range 43 W., 5th. P.M.

STATE OF MINNESOTA, County of YELLOW MEDICINE

At the corner location shown on the sketch:

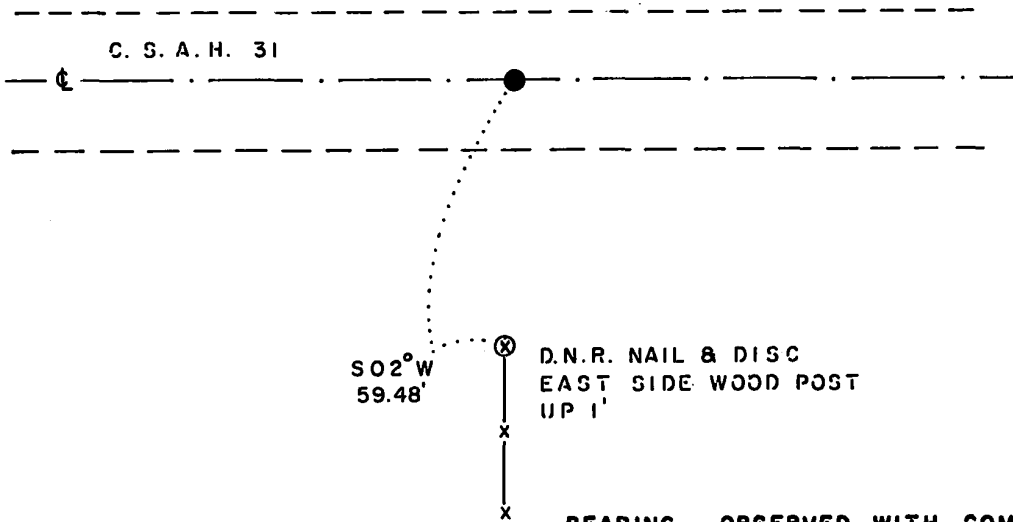
- On _____ found a _____
DATE
- left monument as found, lowered monument, removed monument (explain)
- On 3-3-86 placed a 1 1/4" x 1 1/4" x 20" PERFORATED STEEL TUBE WITH
DATE
ALUMINUM CAP STAMPED "D.N.R. SURVEY MARKER". DOWN 0.3'

SKETCH OF REFERENCE TIES



NOTE:

MONUMENT IS
ON C E-W ROAD
ON FENCE SOUTH



BEARING OBSERVED WITH COMPASS

Statement of evidence relative to this corner location is on back of page.

J. B. M. 4-14-86
3-651

I hereby certify that this document and the data contained herein was prepared by me or under my direct supervision.

Bruce W. Sheppard 4-28-86
SIGNATURE DATE

Registration No. 17003

- Land Surveyor, Professional Engineer
- County Surveyor, County Engineer

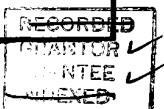
OFFICE OF THE COUNTY RECORDER
County of Yellow Medicine

I hereby certify that this document was filed in the Co. Recorders office at 9:25 AM. on the 1 day of May A.D., 19 86

County Recorder Norman J. Opdahl

By Kay Nerdahl, Deputy

DOCUMENT NO. 188275



North Quarter Corner Section 30, Township 114 North, Range 30 West

This corner was originally established by the U. S. General Land Office survey in 1867. The government notes show:

set quarter post in mound with charred stake and pits

In June 1983, the DNR Bureau of Engineering contacted the Yellow Medicine County Offices of the Recorder and Highway Engineer for corner information.

The following information was obtained from the Recorder's Office:

Surveyor's Plat Book, on Page 190 contains a survey by John Norgaard, County Surveyor, in 1905. Survey shows corner as a stone in the government mound.

The following information was obtained from the Highway Engineer's Office:

Section Corner Book, date not indicated, shows corner but does not state what was found or set. The following ties are shown to corner:
two 1" by 2" hubs, northwest, 10 feet
two 1" by 2" hubs, northeast, 10 feet

The following information was obtained from the DNR Bureau of Engineering's Records:

In 1969, corner was established in line with a fence south and on a line from the northeast corner of Section 30 to the northwest corner of Section 30. A railroad spike was set to mark this location. The following ties are shown to corner:

nail and bottle cap east side of telephone pole, south,
36.07 feet
north face and bottom of bent steel fence post, southwest,
42.79 feet
2579.52 feet from the northwest corner of Section 30
2641.50 feet from the northeast corner of Section 30

On July 5, 1983, the DNR Bureau of Engineering traversed to the area of the corner and located the center line of an east-west road and a fence south. Searched for but did not find a railroad spike.

On June 29, 1983, the DNR Bureau of Engineering hired a backhoe operated by Larry Giese, of Porter to dig for evidence of this corner. Dug a hole 8 feet north-south by 10 feet east-west by 38 inches deep the center being on the center line of east-west road and fence south. Natural ground was encountered down 30 inches. No monument was found. Then a temporary point was set on the center line of east-west road in line with fence south and was found to be:

2579.52 feet from the northwest corner of Section 30
2642.63 feet from the northeast corner of Section 30
1.94 feet north of a line between adjoining section corners

Accept the temporary point as the location of the corner.

Traverse information is available from the DNR Bureau of Engineering.

284hab/missul

CERTIFICATE OF LOCATION OF GOVERNMENT CORNER

NORTHEAST Corner of Section 33, Township 114, Range 43, 5TH P.M.

STATE OF MINNESOTA, County of YELLOW MEDICINE

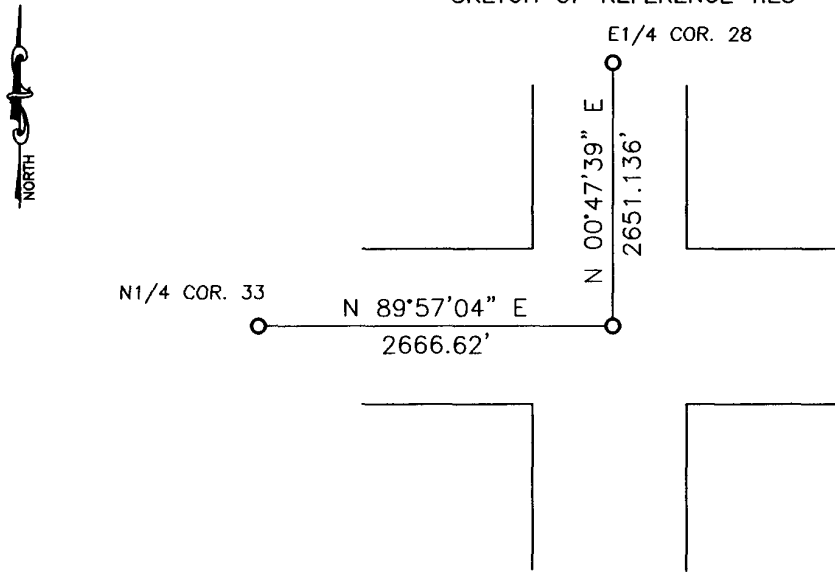
At the corner location shown on the sketch:

On 04-25-13 found a 12" bridge spike over a 6"x6" square cut granite monument
DATE
2.5 feet below the surface

left monument as found, lowered monument, removed monument (explain)

On 05-02-2013 placed a 5/8" iron with seal #43844 over found square cut granite monument.
DATE

SKETCH OF REFERENCE TIES



Minnesota State Plane Coordinate
System Yellow Medicine County Datum
NAD83 (1996)

N: 137638.286
E: 465583.171

Statement of evidence relative to this corner location is on back of page.

I hereby certify that this document and the data contained herein was prepared by me or under my direct supervision

[Signature] 6/3/13
SIGNATURE DATE

Registration No. 43844

Land Surveyor, Professional Engineer
 County Surveyor, County Engineer

OFFICE OF THE COUNTY RECORDER
County of _____

I hereby certify that this document was filed in the Co. Recorders office at _____ .M on the _____ day of _____ A.D. 20 _____

County Recorder _____

By _____, Deputy

DOCUMENT NO. _____

Statement of Evidence

In 1867, David Watson did the original subdivision of the township.

On April 25, 2013, Bueltel-Moseng Land Surveying found 12" spike over a 6"x6" square cut granite monument two and half feet below the surface.

On May 2, 2013, Bueltel-Moseng Land Surveying set $\frac{5}{8}$ " iron with seal #43844 over found square cut granite monument.

Doc# 259459 Fee: \$0.00 2 Pages

Property & Public Services
Property Records Division
Yellow Medicine County, Minnesota
I hereby certify that the within instrument
was filed on February 6, 2014 at 10:55 AM

Janel Timm, Yellow Medicine County Recorder

By Jane Rohlik Deputy

CERTIFICATE OF LOCATION OF GOVERNMENT CORNER

NORTH QUARTER Corner of Section 33, Township 114, Range 43, 5TH P.M.

STATE OF MINNESOTA, County of YELLOW MEDICINE

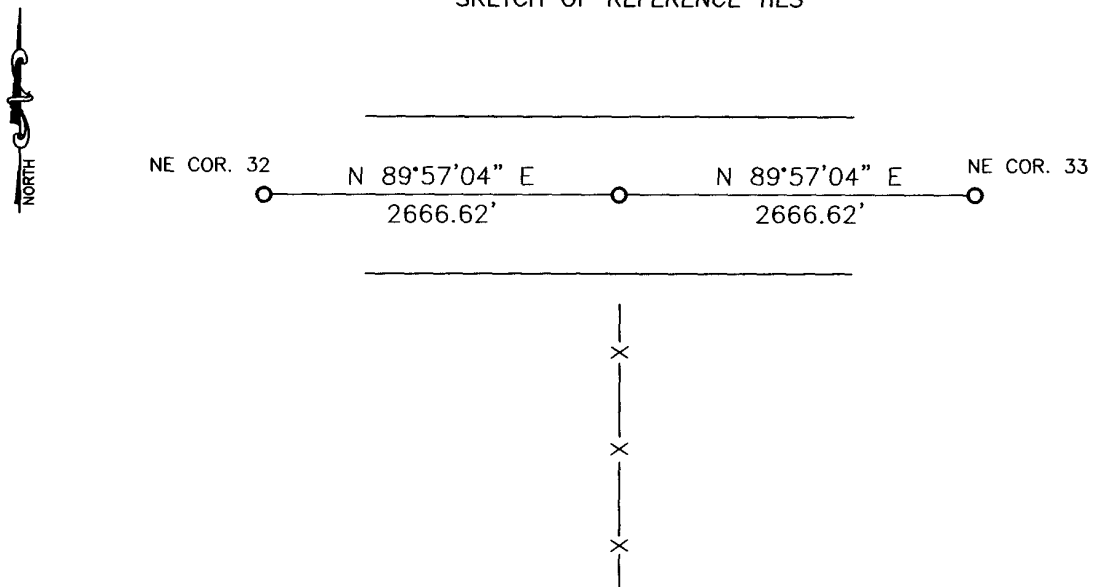
At the corner location shown on the sketch:

On _____ found a _____
DATE

left monument as found, lowered monument, removed monument (explain)

On 05-02-2013 placed a 5/8" iron with seal #43844
DATE

SKETCH OF REFERENCE TIES



Minnesota State Plane Coordinate
System Yellow Medicine County Datum
NAD83 (1996)

N: 137636.006
E: 462916.552

Statement of evidence relative to this corner location is on back of page.

I hereby certify that this document and the data contained herein was prepared by me or under my direct supervision.

[Signature] 6/3/13
SIGNATURE DATE

Registration No. 43844

Land Surveyor, Professional Engineer
 County Surveyor, County Engineer

OFFICE OF THE COUNTY RECORDER

County of _____

I hereby certify that this document was filed in the Co. Recorders office at _____ .M on the _____ day of _____ A.D. 20 _____

County Recorder _____

By _____, Deputy

DOCUMENT NO. _____

Statement of Evidence

In 1867, David Watson did the original subdivision of the township.

On May 2, 2012, Bueltel-Moseng Land Surveying set a $\frac{5}{8}$ " iron with seal #43844 midway and on line between section corners. In center line and in line with fence to the South.

Doc# 259458 Fee: \$0.00 2 Pages

Property & Public Services
Property Records Division
Yellow Medicine County, Minnesota

I hereby certify that the within instrument
was filed on February 6, 2014 at 10:50 AM

Janel Timm, Yellow Medicine County Recorder

By Janel Rohrk Deputy

CERTIFICATE OF LOCATION OF GOVERNMENT CORNER

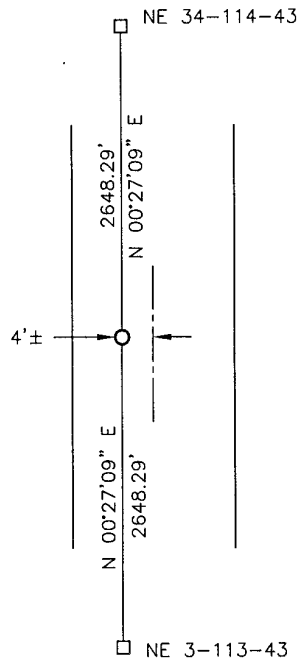
EAST QUARTER Corner of Section 34, Township 114, Range 43, 5TH P.M.

STATE OF MINNESOTA, County of YELLOW MEDICINE

At the corner location shown on the sketch:

- On _____ found a _____
DATE
- left monument as found, lowered monument, removed monument (explain)
- On 04-09-2018 placed a 5/8" IRON WITH SEAL #43844.
DATE

SKETCH OF REFERENCE TIES



Minnesota State Plane Coordinate
 System Yellow Medicine County Datum
 NAD83 (1996)

N: 134939.466
 E: 470780.018

Statement of evidence relative to this corner location is on back of page.

I hereby certify that this document and the data contained herein was prepared by me or under my direct supervision.

[Signature] 4/17/18
SIGNATURE DATE

Registration No. 43844

- Land Surveyor, Professional Engineer
 County Surveyor, County Engineer

Doc# 269587 Fee: \$0.00 2 Pages

Property & Public Services
 Property Records Division
 Yellow Medicine County, Minnesota
 I hereby certify that the within instrument was filed on October 26, 2018 at 1:30 PM

Janel Timm, Yellow Medicine County Recorder

By *[Signature]* Deputy

Statement of Evidence

In 1867, David Watson did the original subdivision of the township.

On September 12, 2017, Bueltel-Moseng Land Surveying dug with a backhoe and found nothing.

On April 9, 2018, Bueltel-Moseng Land Surveying set a 5/8" iron with seal #43844 midway and on line between the section corners. It is 4'± west of the center of the road.

CERTIFICATE OF LOCATION OF GOVERNMENT CORNER

NORTHEAST Corner of Section 34, Township 114, Range 43, 5TH P.M.

STATE OF MINNESOTA, County of YELLOW MEDICINE

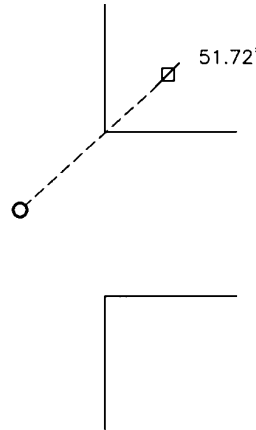
At the corner location shown on the sketch:

On 7/11/14 found a 6"x6"x18" granite monument
DATE

left monument as found, lowered monument, removed monument (explain)

On 7/11/14 placed a 5/8" iron w/seal #43844
DATE

SKETCH OF REFERENCE TIES



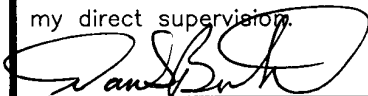
Minnesota State Plane Coordinate
System Yellow Medicine County Datum
NAD83 (1996)

Nail and survey marker in utility pole NE 51.72'

N: 137587.677
E: 470800.929

Statement of evidence relative to this corner location is on back of page.

I hereby certify that this document and the data contained herein was prepared by me or under my direct supervision.


SIGNATURE

1/14/15
DATE

Registration No. 43844

Land Surveyor, Professional Engineer
 County Surveyor, County Engineer

OFFICE OF THE COUNTY RECORDER

County of _____

I hereby certify that this document was filed in the Co. Recorders office at _____ .M on the _____ day of _____ A.D. 20 _____

County Recorder _____

By _____, Deputy

DOCUMENT NO. _____

Statement of Evidence

In 1867, David Watson did the original subdivision of the township.

On July 11, 2014, Bueltel-Moseng Land Surveying found a 12" spike inside a $\frac{3}{4}$ " pipe. We removed the pipe, dug and found a 2" pipe. We removed the 2" pipe and found a 6"x6"x 18" granite monument 3 feet, more or less, below the surface. Set $\frac{5}{8}$ " iron with seal #43844 over the found granite monument at the road surface.

Doc# 261544 Fee: \$0.00 2 Pages

Property & Public Services

Property Records Division

Yellow Medicine County, Minnesota

I hereby certify that the within instrument
was filed on February 23, 2015 at 10:25 AM

Janel Timm, Yellow Medicine County Recorder

By Kelley Kauger Deputy

CERTIFICATE OF LOCATION OF GOVERNMENT CORNER

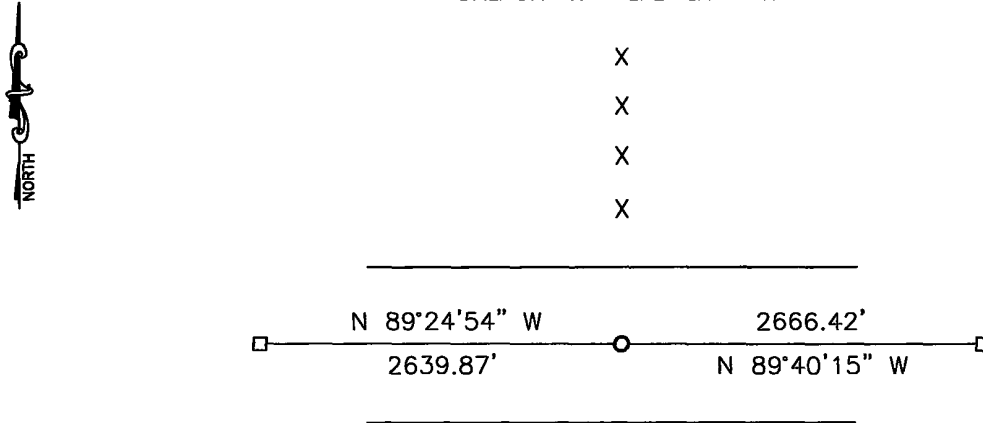
SOUTH QUARTER Corner of Section 34, Township 114, Range 43, 5TH P.M.

STATE OF MINNESOTA, County of YELLOW MEDICINE

At the corner location shown on the sketch:

- On _____ found a _____
DATE
- left monument as found, lowered monument, removed monument (explain)
- On 11-13-2012 placed a cast iron monument.
DATE

SKETCH OF REFERENCE TIES



Minnesota State Plane Coordinate
 System Yellow Medicine County Datum
 NAD83 (1996)
 N: 132304.914
 E: 468092.753

Statement of evidence relative to this corner location is on back of page.

I hereby certify that this document and the data contained herein was prepared by me or under my direct supervision



 SIGNATURE

2/4/13

 DATE

Registration No. 43844

- Land Surveyor, Professional Engineer
- County Surveyor, County Engineer

OFFICE OF THE COUNTY RECORDER
County of _____

I hereby certify that this document was filed in the Co. Recorders office at _____ .M on the _____ day of _____ A.D. 20 _____

County Recorder _____

By _____, Deputy

DOCUMENT NO. _____

Statement of Evidence

In 1858, W. J. Neely did the original survey of the north line of the township.

On November 13, 2012, Bueltel-Moseng Land Surveying dug with a backhoe and found nothing. We set a cast iron monument in line with the fence to the north and 33' south of the old wooden corner fence post. The corner fell 1' south of the center of the road.

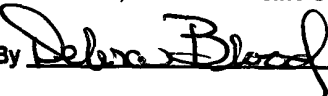
Doc# 257331 Fee: \$0.00 2 Pages

**Property & Public Services
Property Records Division
Yellow Medicine County, Minnesota
I hereby certify that the within instrument
was filed on March 22, 2013 at 10:20 AM**

N/C

Bueltel-Moseng Land Surveying
PO Box 32
Marshall, MN 56258

Janel Timm, Yellow Medicine County Recorder

By  Deputy

CERTIFICATE OF LOCATION OF GOVERNMENT CORNER

NORTH QUARTER Corner of Section 35, Township 114, Range 43, 5TH P.M.

STATE OF MINNESOTA, County of YELLOW MEDICINE

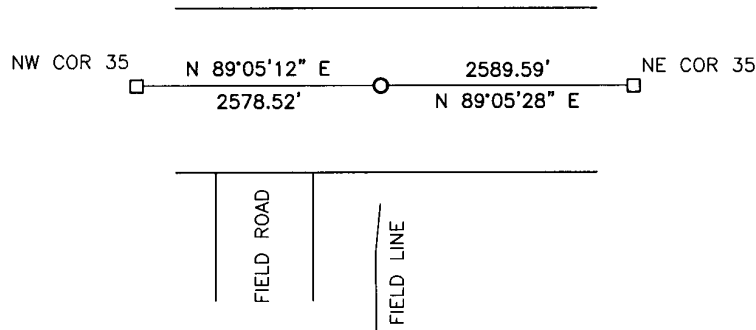
At the corner location shown on the sketch:

On 7/11/14 found a railroad spike
DATE

left monument as found, lowered monument, removed monument (explain)

On 7/11/14 placed a 5/8" iron w/seal #43844
DATE

SKETCH OF REFERENCE TIES



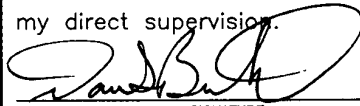
Minnesota State Plane Coordinate
System Yellow Medicine County Datum
NAD83 (1996)

NO TIES

N: 137628.779
E: 473379.126

Statement of evidence relative to this corner location is on back of page.

I hereby certify that this document and the data contained herein was prepared by me or under my direct supervision.


SIGNATURE

1/14/15
DATE

Registration No. 43844

- Land Surveyor, Professional Engineer
- County Surveyor, County Engineer

OFFICE OF THE COUNTY RECORDER
County of _____

I hereby certify that this document was filed in the Co. Recorders office at _____ .M on the _____ day of _____ A.D. 20 _____

County Recorder _____

By _____, Deputy

DOCUMENT NO. _____

Statement of Evidence

In 1867, David Watson did the original subdivision of the township.

On July 11, 2014, Bueltel-Moseng Land Surveying found a railroad spike at the corner. We removed the spike and probed around it. Found nothing. Set $\frac{5}{8}$ " iron with seal #43844 in the location of found railroad spike.

Doc# 261545 Fee: \$0.00 2 Pages

Property & Public Services

Property Records Division

Yellow Medicine County, Minnesota

I hereby certify that the within instrument

was filed on February 23, 2015 at 10:30 AM

Janel Timm, Yellow Medicine County Recorder

By Kelly Kanger Deputy

CERTIFICATE OF LOCATION OF GOVERNMENT CORNER

NORTH QUARTER Corner of Section 36, Township 114, Range 43, 5TH P.M.

STATE OF MINNESOTA, County of YELLOW MEDICINE

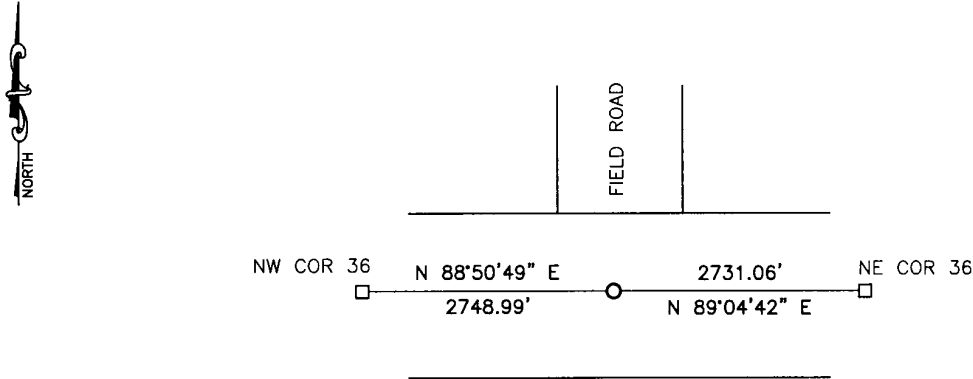
At the corner location shown on the sketch:

On 7/11/14 found a 2" pipe

left monument as found, lowered monument, removed monument (explain)

On 7/11/14 placed a 5/8" iron w/seal #43844

SKETCH OF REFERENCE TIES



Minnesota State Plane Coordinate
System Yellow Medicine County Datum
NAD83 (1996)

NO TIES

N: 137725.180
E: 478716.820

Statement of evidence relative to this corner location is on back of page.

I hereby certify that this document and the data contained herein was prepared by me or under my direct supervision

[Signature] 1/14/15
SIGNATURE DATE

Registration No. 43844

- Land Surveyor, Professional Engineer
 County Surveyor, County Engineer

OFFICE OF THE COUNTY RECORDER

County of _____

I hereby certify that this document was filed in the Co. Recorders office at _____ .M on the _____ day of _____ A.D. 20 _____

County Recorder _____

By _____, Deputy

DOCUMENT NO. _____

Statement of Evidence

In 1867, David Watson did the original subdivision of the township.

In 1915, L.S. Hoffman, Department County Surveyor, recorded two small 8" stones at the corner.

On July 11, 2014, Bueltel-Moseng Land Surveying dug with a backhoe and found a 12" bridge spike at the surface. Removed, dug and found a 2" pipe 5', more or less, below the surface. We probed around the 2" pipe and found nothing. Set $\frac{5}{8}$ " iron w/seal #43844 over found 2" pipe at the surface.

Doc# 261548 Fee: \$0.00 2 Pages

Property & Public Services

Property Records Division

Yellow Medicine County, Minnesota

I hereby certify that the within instrument

was filed on February 23, 2015 at 10:45 AM

Janel Timm, Yellow Medicine County Recorder

By Kelly Kauger Deputy

CERTIFICATE OF LOCATION OF GOVERNMENT CORNER

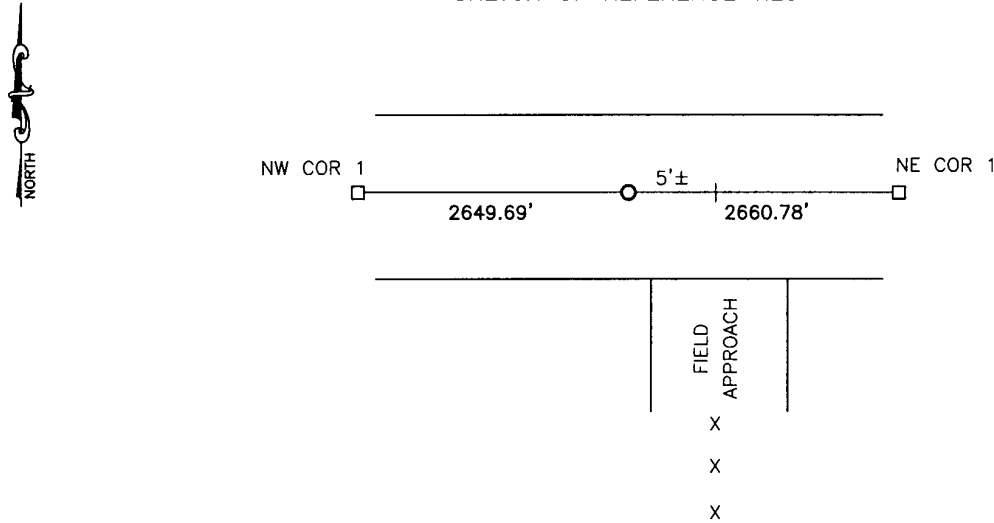
SOUTH QUARTER Corner of Section 36, Township 114, Range 43, 5TH P.M.

STATE OF MINNESOTA, County of YELLOW MEDICINE

At the corner location shown on the sketch:

- On _____ found a _____
DATE
- left monument as found, lowered monument, removed monument (explain)
- On 7/21/14 placed a cast iron monument
DATE

SKETCH OF REFERENCE TIES



Minnesota State Plane Coordinate NO TIES
 System Yellow Medicine County Datum The corner is 5'± West of the fence line to the South.
 NAD83 (1996)
 N: 132412.350
 E: 478720.025

Statement of evidence relative to this corner location is on back of page.

I hereby certify that this document and the data contained herein was prepared by me or under my direct supervision.

David Smith 1/21/15
SIGNATURE DATE

Registration No. 43844

- Land Surveyor, Professional Engineer
 County Surveyor, County Engineer

OFFICE OF THE COUNTY RECORDER

County of _____

I hereby certify that this document was filed in the Co. Recorders office at _____ .M on the _____ day of _____ A.D. 20 _____

County Recorder _____

By _____, Deputy

DOCUMENT NO. _____

Statement of Evidence

In 1859, W.J. Neely did the original survey of the north line of the township.

On November 17, 1896, O.H. Sterk found a stone at the corner.

(No date), O.H. Sterk set a hard head stone and 36" iron at the corner.

In October, 1915, Hoffman, Yellow Medicine County Surveyor found a stone and 36" iron at the corner.

On July 21, 2014, Bueltel-Moseng Land Surveying dug with backhoe and found nothing. We set a cast iron monument on line and proportionate distances between the section corners. The corner is 5'± west of fence line to the south.

Doc# 261547 Fee: \$0.00 2 Pages

Property & Public Services

Property Records Division

Yellow Medicine County, Minnesota

I hereby certify that the within instrument
was filed on February 23, 2015 at 10:40 AM

Janel Timm, Yellow Medicine County Recorder

By Kelly Kauger Deputy

CERTIFICATE OF LOCATION OF GOVERNMENT CORNER

NORTHEAST Corner of Section 36, Township 114, Range 43, 5TH P.M.

STATE OF MINNESOTA, County of YELLOW MEDICINE

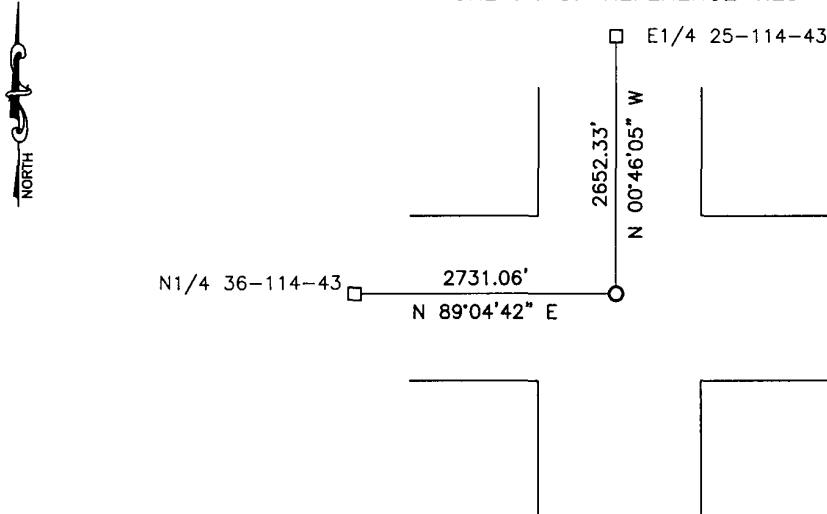
At the corner location shown on the sketch:

On 7/11/14 found a 6"x6" jasper stone
DATE

left monument as found, lowered monument, removed monument (explain)

On 7/11/14 placed a 5/8" iron w/seal #43844
DATE

SKETCH OF REFERENCE TIES



Minnesota State Plane Coordinate
System Yellow Medicine County Datum
NAD83 (1996)

NO TIES

N: 137769.115
E: 481447.531

Statement of evidence relative to this corner location is on back of page.

I hereby certify that this document and the data contained herein was prepared by me or under my direct supervision.

[Signature] 1/14/15
SIGNATURE DATE

Registration No. 43844

Land Surveyor, Professional Engineer
 County Surveyor, County Engineer

OFFICE OF THE COUNTY RECORDER
County of _____

I hereby certify that this document was filed in the Co. Recorders office at _____ M on the _____ day of _____ A.D. 20 _____

County Recorder _____

By _____, Deputy

DOCUMENT NO. _____

Statement of Evidence

In 1858, W.J. Neely did the original township lines of the township.

In October, 1915, L.S. Hoffman, Department County Surveyor, recorded a jasper stone at the corner.

On July 11, 2014, Bueltel-Moseng Land Surveying dug with a backhoe and found a 12" spike at the surface, removed and found a ¾" pipe. Removed, dug lower, and found a 12" field stone. Removed, dug lower, and found a 10" field stone. Removed, dug lower, and found 6"x6" square cut jasper stone. Set ⅝" iron with seal #43844 over found jasper stone at the road surface.

Doc# 261546 Fee: \$0.00 2 Pages

Property & Public Services

Property Records Division

Yellow Medicine County, Minnesota

I hereby certify that the within instrument

was filed on February 23, 2015 at 10:35 AM

Janel Timm, Yellow Medicine County Recorder

By Kelly Kauger Deputy