

CERTIFICATE OF LOCATION OF GOVERNMENT CORNER

7 MEANDER Corner of Section 30, Township 115 N, Range 38 W, 5th P.M.

STATE OF MINNESOTA, County of YELLOW MEDICINE

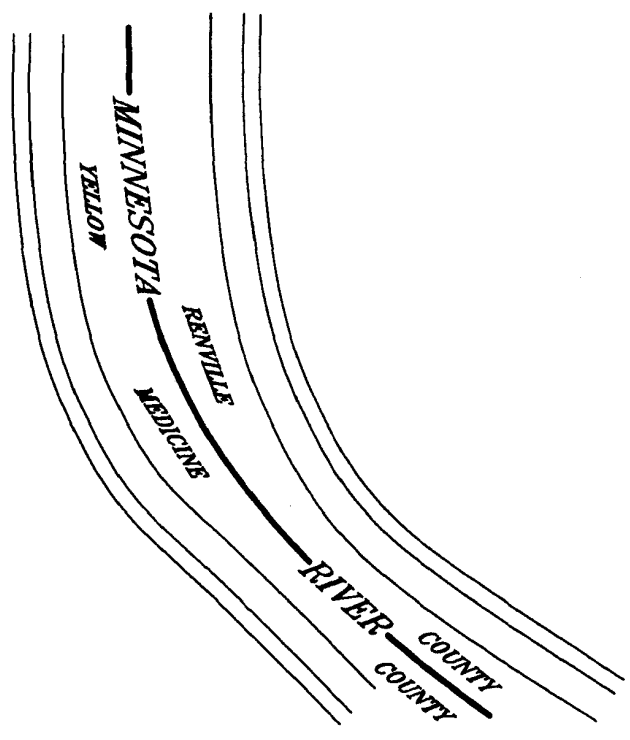
At the corner location shown on the sketch:

- On _____ found a _____
DATE
- left monument as found, lowered monument, removed monument (explain)
- On _____ Placed a _____
DATE

SKETCH OF REFERENCE TIES



NOTE:
NO MONUMENT SET
AREA OF CORNER IS IN
THE MINNESOTA RIVER
(6-14-95)



Statement of evidence relative to this corner location is on back of page.

JBM OCT '95
SPK00277.00.00.01

I hereby certify that this document and the data contained herein was prepared by me or under my direct supervision.

Russ W. Stepp 11/6/95
SIGNATURE DATE

License Number 17003

- Land Surveyor, Professional Engineer
- County Surveyor, County Engineer

OFFICE OF THE COUNTY RECORDER
County of Yellow Medicine

I hereby certify that this document was filed in the Co. recorders office at 10:40 A.M. on the 7 day of November A.D., 1995

County Recorder Donald J. Gabel
By _____, Deputy

DOCUMENT NO. 210280

Meander Corner Number 7 Section 30, Township 115 North, Range 38 West

The DNR Bureau of Engineering contacted the following for survey information:

Minnesota Secretary of State's Office
Mn/DOT Offices in St. Paul and Willmar
Yellow Medicine County Recorder's Office
Yellow Medicine County Highway Engineer's Office
Montevideo City Engineer's Office
Bonnema Surveys of Willmar
Moseng and Zieske Surveying, Inc. of Marshall
Michael Nyberg, RLS #13145, of Carlos
West Central Land Services, Inc. of Willmar
K.B. MacKichan and Associates, Inc. of Redwood Falls

1864 U.S. General Land Office notes obtained from the Secretary of State's Office show the corner marked with a wood post in a mound of earth with pits on the right bank of the Minnesota River. The corner is shown:

31.00 chains (2046.00 feet) from the north quarter corner of Section 30

The notes show that a distance east of corner was not measured.

1866 U.S. General Land Office notes for the subdivision of Township 115 North, Range 38 West that lies north of the Minnesota River, obtained from the Secretary of State's Office show that the wood post that was set in 1864 was found at corner. The corner is shown:

North 62° West, 4.87 chains (321.42 feet) from Meander Corner Number 4

1977 May, a subdivision of Section 30 shown on Certificate of Surveys in the northeast quarter of Section 30 and in the east half of Section 19 obtained from West Central Land Services, Inc. shows that an iron pipe was set for the northeast corner of Section 30. A distance of 2652.67 feet is shown between the north quarter corner of Section 30 to the northeast corner of Section 30 no information is given about Meander Corner Number 7.

A note on a copy of a subdivision of Section 30 obtained from West Central Land Services states that the northeast corner was established at a theoretical position.

1995 June, DNR Bureau of Engineering computed a position for the meander corner as follows:

A) 2046.00 feet (GLO distance) from the north quarter corner of Section 30

B) on the easterly extension of a line from the northwest corner of Section 30 thru the north quarter corner of Section 30

Do not accept the procedure used in 1977 to establish the north line of Section 30 in the area of meander corner because it was computed from a theoretical position for the northeast corner of Section 30 (GLO did not set the northeast corner of Section 30 in 1864).

Analysis of the above information led the DNR Bureau of Engineering to conclude that the computed position for corner - GLO distance from the north quarter corner of Section 30 and on the easterly extension of a line from the northwest corner of Section 30 thru the north quarter corner of Section 30 - marks the location of corner. Did not set a monument to mark corner or a reference monument to it because area of corner is in the flood plain of the Minnesota River.

CERTIFICATE OF LOCATION OF GOVERNMENT CORNER

6 MEANDER Corner of Section 30, Township 115 N, Range 38 W, 5th P.M.

STATE OF MINNESOTA, County of YELLOW MEDICINE

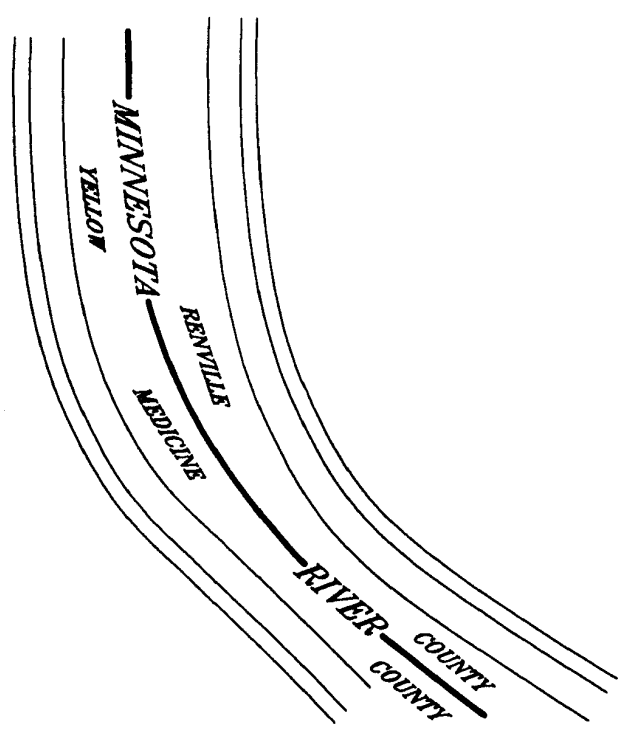
At the corner location shown on the sketch:

- On _____ found a _____
DATE
- left monument as found, lowered monument, removed monument (explain)
- On _____ Placed a _____
DATE

SKETCH OF REFERENCE TIES



NOTE:
NO MONUMENT SET
AREA OF CORNER IS IN
THE MINNESOTA RIVER
(6-14-95)



Statement of evidence relative to this corner location is on back of page. JBM OCT '95
SPK.00277.00.00.01

I hereby certify that this document and the data contained herein was prepared by me or under my direct supervision.

Bruce W. Sheppard 11/6/95
SIGNATURE DATE

License Number 17003

Land Surveyor, Professional Engineer
 County Surveyor, County Engineer

OFFICE OF THE COUNTY RECORDER
County of Yellow Medicine

I hereby certify that this document was filed in the Co. recorders office at 10:35 A.M. on the 7 day of November A.D., 1995

County Recorder Danwood Spedick
By _____, Deputy

DOCUMENT NO. 210279

Meander Corner Number 6 Section 30, Township 115 North, Range 38 West

The DNR Bureau of Engineering contacted the following for survey information:

Minnesota Secretary of State's Office
Mn/DOT Offices in St. Paul and Willmar
Yellow Medicine County Recorder's Office
Yellow Medicine County Highway Engineer's Office
Montevideo City Engineer's Office
Bonnema Surveys of Willmar
Moseng and Zieske Surveying, Inc. of Marshall
Michael Nyberg, RLS #13145, of Carlos
West Central Land Services, Inc. of Willmar
K.B. MacKichan and Associates, Inc. of Redwood Falls

- 1864 U.S. General Land Office notes obtained from the Secretary of State's Office show the corner marked with a wood post in a mound of earth with pits on the right bank of the Minnesota River. The corner is shown:
31.26 chains (2063.16 feet) from the east quarter corner of Section 30
The notes show that a distance north of corner was not measured.
- 1866 U.S. General Land Office notes for the subdivision of Township 115 North, Range 38 West that lies north of the Minnesota River, obtained from the Secretary of State's Office show that the wood post that was set in 1864 was found at corner. The corner is shown:
South $34\ 1\frac{1}{2}^{\circ}$ East, 6.75 chains (445.50 feet) from Meander Corner Number 5
- 1977 May, a Certificate of Survey in the northeast quarter of Section 30 and in the east half of Section 19 obtained from West Central Land Services, Inc. shows that an iron pipe was set on the east line of Section 30 and 14 feet south of the Minnesota River. No information is given about the meander corner. The iron pipe is shown:
A) 1958.42 feet from the east quarter corner of Section 30
B) on the northerly extension of a line from the southeast corner of Section 30 thru the east quarter corner of Section 30
C) 897.58 feet north of an iron pipe set on the east line of Section 30
- 1989 November 2, DNR Bureau of Engineering searched for the iron pipe set on the right bank of the Minnesota River and found that the river has moved south and removed the iron pipe. Also, searched 898 feet south for the iron pipe set on the east line of Section 30 but did not find it.
- 1995 June, DNR Bureau of Engineering computed a position for corner as follows:
A) 2063.16 feet (GLO distance) from the east quarter corner of Section 30
B) on the northerly extension of a line from the southeast corner of Section 30 thru the east quarter corner of Section 30

Analysis of the above information led the DNR Bureau of Engineering to conclude that the computed position for corner - GLO distance from the east quarter corner of Section 30 and on the northerly extension of a line from the southeast corner of Section 30 thru the east quarter corner of Section 30 - marks the location of corner. Could not set a monument for corner because its location is in the Minnesota River and did not set a reference monument to corner because area is in the flood plain.

CERTIFICATE OF LOCATION OF GOVERNMENT CORNER

NORTH QUARTER Corner of Section 30, Township 115 N, Range 30 W, 5th P.M.

STATE OF MINNESOTA, County of YELLOW MEDICINE

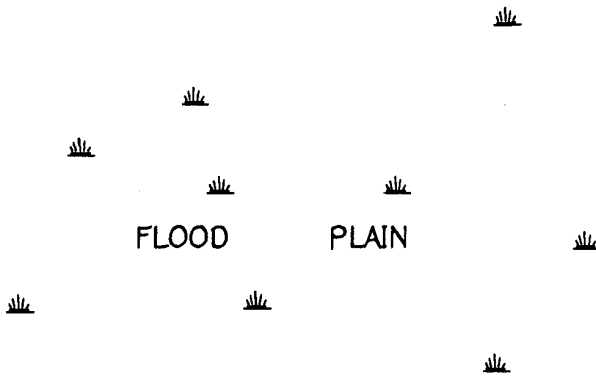
At the corner location shown on the sketch:

- On _____ found a _____
DATE
- left monument as found, lowered monument, removed monument (explain)
- On _____ Placed a _____
DATE

SKETCH OF REFERENCE TIES



NOTE:
 NO MONUMENT SET
 AREA OF CORNER IS IN
 THE FLOOD PLAIN OF THE
 MINNESOTA RIVER
 (6-14-95)



Statement of evidence relative to this corner location is on back of page.

JBM OCT '95
SPK00277.00.00.01

I hereby certify that this document and the data contained herein was prepared by me or under my direct supervision.

Eric W. Shypel 11/6/95
SIGNATURE DATE

License Number 17003

- Land Surveyor, Professional Engineer
- County Surveyor, County Engineer

OFFICE OF THE COUNTY RECORDER
County of Yellow Medicine

I hereby certify that this document was filed in the Co. recorders office at 10:30 A.M. on the 7 day of November A.D., 1995

County Recorder *Norman J. Carlisle*
By _____, Deputy

DOCUMENT NO. 210278

North Quarter Corner Section 30, Township 115 North, Range 38 West

The DNR Bureau of Engineering contacted the following for survey information:

Minnesota Secretary of State's Office
Mn/DOT Offices in St. Paul and Willmar
Yellow Medicine County Recorder's Office
Yellow Medicine County Highway Engineer's Office
Montevideo City Engineer's Office
Bonnema Surveys of Willmar
Moseng and Zieske Surveying, Inc. of Marshall
Michael Nyberg, RLS #13145, of Carlos
West Central Land Services, Inc. of Willmar
K.B. MacKichan and Associates, Inc. of Redwood Falls

- 1864 U.S. General Land Office notes obtained from the Secretary of State's Office show the corner marked with a wood post in a mound of earth with pits. The corner is shown:
40.00 chains (2640.00 feet) from the northwest corner of Section 30

The notes also show that the north line of Section 30 to be only 71.00 chains long because its east end stops at Meander Corner Number 7.

- 1977 May, a subdivision of Section 30 shown on Certificate of Surveys in the northeast quarter of Section 30 and in the east half of Section 19 obtained from West Central Land Services, Inc. shows corner but does not indicate what was found or set. The corner is shown:
midway and on line between adjoining section corners 2644.49 feet apart

A note on a copy of a subdivision of Section 30 obtained from West Central Land Services states that corner was established on a north-south fence.

- 1978 January, a Certificate of Survey in the southwest quarter of the northeast quarter of Section 30 obtained from West Central Land Services, Inc. shows that a stone was found at corner.
- 1995 June, DNR Bureau of Engineering was unable to visit area of corner because area was flooded with water.

Do not accept the procedure used in 1977 to establish the north-south position for corner because it was computed from a theoretical position for the northeast corner of Section 30 (GLO did not set the northeast corner of Section 30 in 1864).

Computed a position for corner as follows:
solar East from the northwest corner of Section 30
on the north-south fence as located in 1977

The computed position was found to be:
2653.06 feet from the northwest corner of Section 30
20.17 feet south of the position established in 1977 for corner

Analysis of the above information led the DNR Bureau of Engineering to conclude that the computed position for corner on the north-south fence and solar east from the northwest corner of Section 30 marks the obliterated location of the corner. Did not set a monument to mark corner or a reference monument to it because area of corner is in the flood plain of the Minnesota River.

CERTIFICATE OF LOCATION OF GOVERNMENT CORNER

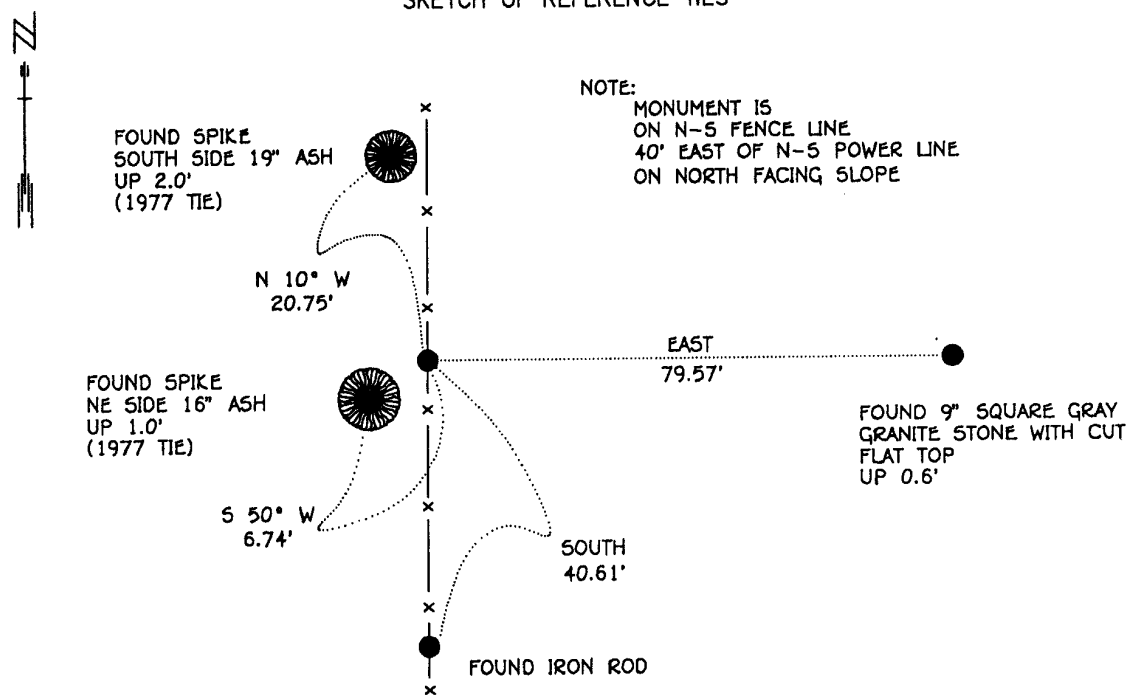
EAST QUARTER Corner of Section 30, Township 115 N, Range 38 W, 5th P.M.

STATE OF MINNESOTA, County of YELLOW MEDICINE

At the corner location shown on the sketch:

- On 6-21-95 found a 1/2" INSIDE DIAMETER IRON PIPE WITH A PLASTIC CAP
DATE STAMPED "RL5 #10396", UP 0.3'
 - left monument as found,
 - lowered monument,
 - removed monument (explain)
- On _____ Placed a _____
DATE

SKETCH OF REFERENCE TIES



BEARINGS OBSERVED WITH COMPASS

Statement of evidence relative to this corner location is on back of page. JBM OCT '95
SPK00277.00.00.01

I hereby certify that this document and the data contained herein was prepared by me or under my direct supervision.

Bruce W. Sheppard 11/6/95
SIGNATURE DATE

License Number 17003

Land Surveyor, Professional Engineer
 County Surveyor, County Engineer

OFFICE OF THE COUNTY RECORDER
 County of Yellow Medicine

I hereby certify that this document was filed in the Co. recorders office at 10:25 A.M. on the 7 day of November A.D., 1995

County Recorder Deborah J. Spindler
 By _____, Deputy
 DOCUMENT NO. 210277

The DNR Bureau of Engineering contacted the following for survey information:

Minnesota Secretary of State's Office
Mn/DOT Offices in St. Paul and Willmar
Yellow Medicine County Recorder's Office
Yellow Medicine County Highway Engineer's Office
Montevideo City Engineer's Office
Bonnema Surveys of Willmar
Moseng and Zieske Surveying, Inc. of Marshall
Michael Nyberg, RLS #13145, of Carlos
West Central Land Services, Inc. of Willmar
K.B. MacKichan and Associates, Inc. of Redwood Falls

- 1864 U.S. General Land Office notes obtained from the Secretary of State's Office show the corner marked with a wood post in a mound of earth with pits.
- 1895 Surveyor's Record Book, page 534, obtained from the County Recorder's Office, contains a survey by John Norgaard, County Surveyor. Survey shows corner but does not indicate what was found or set. The corner is shown:
2680 feet from the northeast corner of Section 31
1340 feet from a stake set for the west sixteenth corner of the southwest quarter of Section 29
- 1901 Surveyor's Record Book B, pages 9 and 71, obtained from the County Recorder's Office, contain a collection of what was found or set at government corners by John Norgaard, County Surveyor, in a township re-monumentation survey. Norgaard states "found quarter post as located by me 6 years ago". The corner is shown:
2685 feet from the northeast corner of Section 31
- 1913 A Sioux Agency Township Ownership Map obtained from the County Recorder's Office shows a north-south road southerly of the corner and southerly of a northwest-southeast road.
- 1930 Surveyor's Record Book, page 534, obtained from the County Recorder's Office, contains a survey by John Norgaard, County Surveyor. Survey shows corner but does not indicate what was found or set. The corner is shown:
2680 feet from the northeast corner of Section 31
1340 feet from a stake set for the west sixteenth corner of the southwest quarter of Section 29
- No Date A right-of-way map for State Trunk Highway Number 67 obtained from Mn/DOT in St. Paul shows a symbol for corner but does not indicate what was found or set and no distances or angles are shown to it. The corner is shown:
in the middle of two north-south fences
in line with the center line of a public road south

East Quarter Corner Section 30, Township 115 North, Range 38 West, Page 2 of 4

- 1977 May, a subdivision of Section 30 shown on Certificate of Surveys in the northeast quarter of Section 30 and in the east half of Section 19 obtained from West Central Land Services, Inc. shows that an iron pipe with a plastic cap stamped "RLS #10396" was set for corner but does not indicate how its location was determined. The corner is shown:
2680.00 feet from the northeast corner of Section 31
2640.00 feet from the northeast corner of Section 30

An iron pipe with a plastic cap stamped "RLS #10396" was also set at the east sixteenth corner of the southeast quarter of Section 30. The iron pipe is shown:
1340.00 feet from the east quarter corner of Section 30
1340.00 feet from the northeast corner of Section 31

- No Date A tie page in a field notebook obtained from West Central Land Services, Inc. shows a ½" iron pipe at corner but does not indicate if found or set. The following ties are shown to corner:
on north-south fence line
20 feet east of north-south fence line
spike in 18" tree, northwest, 20.70 feet
spike in 12" tree, southwest, 6.76 feet

- 1978 January, a Certificate of Survey in the southwest quarter of the northeast quarter of Section 30 obtained from West Central Land Services, Inc. shows that an iron monument was found at corner.

- 1978 May, DNR Bureau of Engineering found a ½" inside diameter iron pipe at corner. The iron pipe was found to be:
2680.93 feet from the northeast corner of Section 31
on a maintained north-south fence line with steel posts
20 feet east of a mostly downed north-south fence line

Contacted the brother of Burden Finnes, landowner in Section 30, for testimony regarding this corner. He said that he grew up in the area and the two fences along the east line of Section 30 have been in place as long as he can remember. He did not know why there are two fences, but believed it was to keep the cattle between the two farms apart.

Also, contacted Benny Iverson, approximate 70 year old area landowner, for testimony regarding this corner. He said that the two fences were built to keep the bulls from the two farms away from each other. He did not know their relationship to the section line. Benny knew about the stones marking the southeast and southwest corners of Section 30 but did not know about any monuments marking the quarter corners.

Searched area of corner for other iron monuments and found a 3/4" by 16" power pole step peg. The peg was found in a vertical position on the easterly fence and about 40 feet south of the iron pipe set for corner in 1977. Search included area up to 100 feet westerly of the iron pipe and peg.

Also, searched the area of the west sixteenth corner of the southwest quarter of Section 29 and found an iron rod about 45 feet westerly of the iron pipe set for sixteenth corner in 1977.

Searched for occupation lines along the east-west quarter line of Section 30 and found a driveway and field road about 20 feet south of the quarter line per 1977 survey. Was unable to obtain testimony if the driveway and field road were constructed on the quarter line. Also, searched for but could not find a survey prior to 1977 for the subdivision of Section 30.

1989 November, DNR Bureau of Engineering found the ½" diameter iron pipe set for corner in 1977.

1995 June 21, DNR Bureau of Engineering found the ½" diameter iron pipe set for corner in 1977. Searched for and found record ties as shown on sketch of reference ties. The iron pipe was found to be:

2681.10 feet from the northeast corner of Section 31

Located the iron rod found in 1978 in the area of the west sixteenth of the southwest quarter of Section 29 and found it to be:

1338.02 feet from the northeast corner of Section 31

47.14 feet west of a straight line from the northeast corner of Section 31 to the found iron pipe

Located the center line of an old abandoned north-south road bed 930 feet south of the area of corner and found it to be:

47 feet west of a straight line from the northeast corner of Section 31 to the found iron pipe

Computed a lost position for corner as follows:

solar North from the northeast corner of Section 31

2680.00 feet from the northeast corner of Section 31

The computed lost position for corner was found to be:

81.92 feet east of the iron pipe set for corner in 1977

Conducted a field search at the computed lost position for corner by scanning the area with an electronic metal detector but no metal attraction was obtained. A 9" square by 14" long gray granite stone up 0.6 of a foot with its top cut flat was found:

79.57 feet easterly of the found iron pipe set for corner in 1977

Conducted another field search in the area of the west sixteenth corner of the southwest quarter of Section 29 and found an old downed corner fence post, with downed fences east and north-northwest and found it to be:

57 feet northeasterly of the iron pipe set for sixteenth corner in 1977

45 feet east of a straight line from the northeast corner of Section 31 to the found iron pipe set for the east quarter corner of Section 30 in 1977

1378 feet from the northeast corner of Section 31

4 feet east of a straight line from the northeast corner of Section 31 to the cut flat top stone found in the area of the east quarter corner of Section 30

Analysis of the above information led the DNR Bureau of Engineering to conclude that the found iron pipe which was set in 1977 on a north-south fence and 2680 feet from the northeast corner of Section 31 marks the obliterated location of the corner. Did not accept the stone with a cut flat top as marking the location of the corner because:

- A) do not have a record stating that a stone was set for corner
- B) John Norgaard's procedure was to only set stones at section corners
- C) Benny Iverson knew about the record stones at the section corners but did not know about a monument marking this corner
- D) the brother of Burden Finnes did not know about a monument marking this corner

Did not accept the iron rod or old downed corner fence post found in the area of the west sixteenth of the southwest quarter of Section 29 as marking the sixteenth corner because:

- A) do not have a record stating that an iron monument was set to mark corner
- B) was unable to obtain testimony on how the location of the old downed corner fence post was determined

Did not accept the computed lost position as the location of the corner because:

- A) other quarter corners that were established using obliterated methods during the course of the DNR Bureau of Engineering's survey in Sections 30 and 32 were found to be as much as 150 feet off of a straight line between adjoining section corners

CERTIFICATE OF LOCATION OF GOVERNMENT CORNER

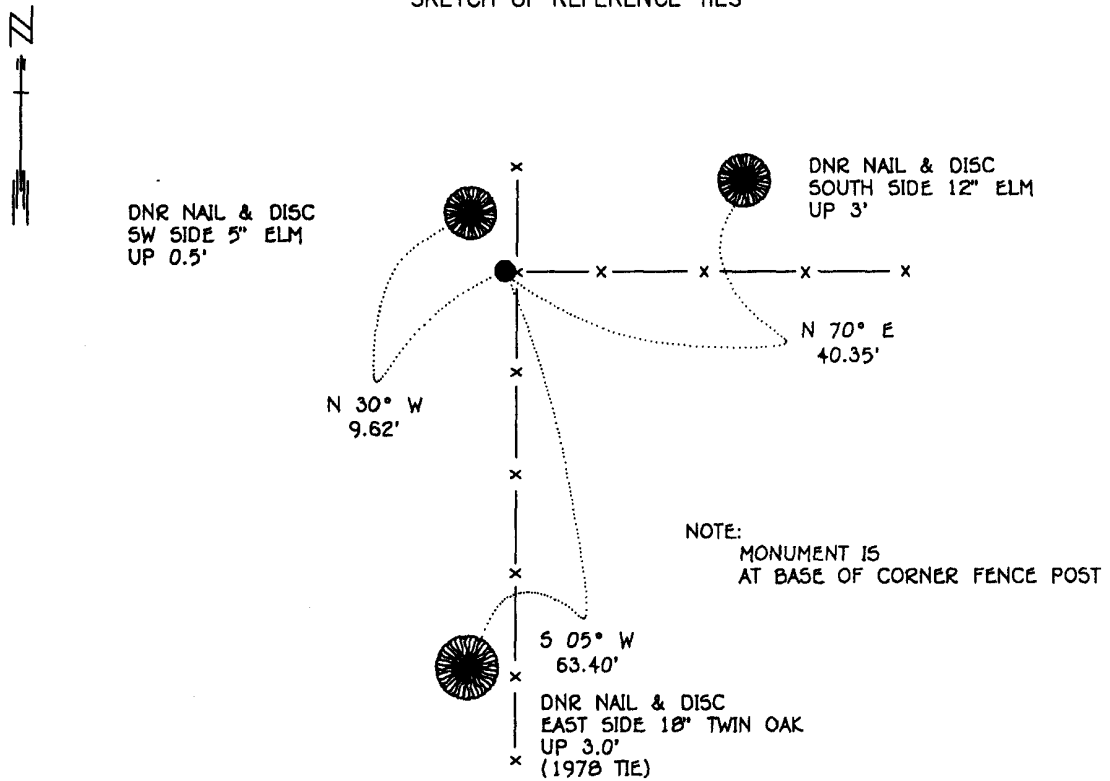
NORTH QUARTER Corner of Section 31, Township 115 N, Range 30 W, 5th P.M.

STATE OF MINNESOTA, County of YELLOW MEDICINE

At the corner location shown on the sketch:

- On 6-21-95 found a 1/2" INSIDE DIAMETER IRON PIPE WITH A PLASTIC CAP
DATE STAMPED "RLS #10396", UP 0.4'
- left monument as found, lowered monument, removed monument (explain)
- On _____ Placed a _____
DATE

SKETCH OF REFERENCE TIES



BEARINGS OBSERVED WITH COMPASS

Statement of evidence relative to this corner location is on back of page.

JBM OCT '95
SPK.00277.00.00.01

I hereby certify that this document and the data contained herein was prepared by me or under my direct supervision.

Bruce W. Shopp 11/6/95
SIGNATURE DATE

License Number 17003

- Land Surveyor, Professional Engineer
- County Surveyor, County Engineer

OFFICE OF THE COUNTY RECORDER
County of Yellow Medicine

I hereby certify that this document was filed in the Co. recorders office at 10:20 A .M. on the 7 day of November A.D., 1995

County Recorder Thomas J. O'Leary
By _____, Deputy
DOCUMENT NO. 210276

The DNR Bureau of Engineering contacted the following for survey information:

Minnesota Secretary of State's Office
Mn/DOT Offices in St. Paul and Willmar
Yellow Medicine County Recorder's Office
Yellow Medicine County Highway Engineer's Office
Montevideo City Engineer's Office
Bonnema Surveys of Willmar
Moseng and Zieske Surveying, Inc. of Marshall
Michael Nyberg, RLS #13145, of Carlos
West Central Land Services, Inc. of Willmar
K.B. MacKichan and Associates, Inc. of Redwood Falls

- 1864 U.S. General Land Office notes obtained from the Secretary of State's Office show that a wood post was set to mark corner with the following bearing trees marked:
6" Oak, North 80° East, 10 links (6.60 feet)
10" Lind, South 74° West, 20 links (13.20 feet)
The corner is also shown:
4.70 chains (310.20 feet), West of the foot of a bluff
5.30 chains (349.80 feet), East of the top of a bluff
- 1895 Surveyor's Record Book, page 520, obtained from the County Recorder's Office, contains a survey by John Norgaard, County Surveyor. Survey states that all the government corners in Section 31 were found.
- 1901 Surveyor's Record Book B, pages 9 and 71, obtained from the County Recorder's Office, contain a collection of what was found or set at government corners by John Norgaard, County Surveyor, in a township re-monumentation survey. Norgaard states "found quarter post as located by me 6 years ago". The corner is shown:
2694 feet from the northeast corner of Section 31
- 1929 Surveyor's Record Book, page 520, obtained from the County Recorder's Office, contains a survey by John Norgaard, County Surveyor. Survey shows corner but does not indicate what was found or set. The corner is shown:
2694 feet from the northeast corner of Section 31
2902 feet from the northeast corner of Section 36
5494 feet from the north quarter corner of Section 6
- 1977 May, a subdivision of Section 30 shown on Certificate of Surveys in the northeast quarter of Section 30 and in the east half of Section 19 obtained from West Central Land Services, Inc. shows that an iron pipe with a plastic cap stamped "RLS #10396" was set for corner but does not indicate how its location was determined. The corner is shown:
2679.74 feet from the northeast corner of Section 31
2887.13 feet from the northeast corner of Section 36
Computations using information on the subdivision of Section 30 reveal that the corner is:
149.76 feet north of a straight line between adjoining section corners

1977 May, a Certificate of Survey in the south half of Section 31 and notes obtained from Moseng and Zieske Land Surveying, Inc. show that the iron pipe set by Byron Dahle, RLS #10396, was found at corner. The corner is shown:

at the intersection of fences

2687.69 feet from the northeast corner of Section 31

2881.64 feet from the northeast corner of Section 36

5495.85 feet from the north quarter corner of Section 6

Computations using information on the subdivision of Section 31 reveal that the corner is:

145.43 feet north of a straight line between adjoining section corners

1978 January, a Certificate of Survey in the southwest quarter of the northeast quarter of Section 30 obtained from West Central Land Services, Inc. shows that an iron monument was found at corner.

1978 May, DNR Bureau of Engineering found an iron pipe with a plastic cap stamped "RLS #10396" at corner. Searched for but found no evidence of the GLO bearing trees. The following ties were taken to corner:

on the west side of a corner fence post with very old fences north, south and east

2" Hackberry, northeast, 0.7 of a foot

nail and DNR disc on the west side of an 18" Triple Elm, northeast, 35.09 feet

nail and DNR disc on the east side of a 30" Elm, southeast, 26.56 feet

nail and DNR disc on the east side of a 14" Twin Bur Oak, south-southwest, 63.42 feet

1995 June 21, DNR Bureau of Engineering found the iron pipe that was found at corner in 1978. Searched for and found one record tie as shown on sketch of reference ties. The iron pipe was found to be:

2679.91 feet from the northeast corner of Section 31

2887.52 feet from the northeast corner of Section 36

150.67 feet north of a straight line between adjoining section corners

151.22 feet north and 78.82 feet east of the computed lost position for corner

Conducted a field search at the computed lost position for corner by scanning the area with an electronic metal detector but no metal attraction was obtained. Also, searched for but found no evidence of the GLO bearing trees.

Analysis of the above information led the DNR Bureau of Engineering to conclude that the found iron pipe which was set in 1977 next to a corner fence post with fences north, south and east marks the obliterated location of the corner.

CERTIFICATE OF LOCATION OF GOVERNMENT CORNER

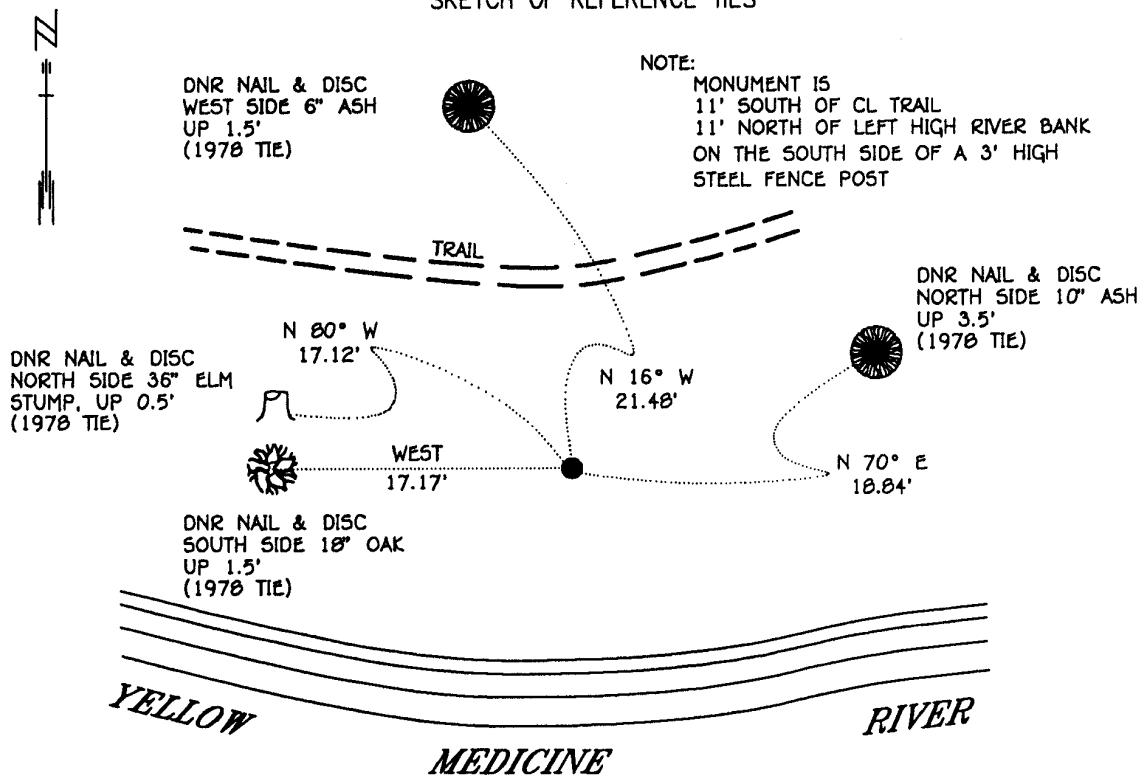
NORTHEAST Corner of Section 31, Township 115 N, Range 30 W, 5th P.M.

STATE OF MINNESOTA, County of YELLOW MEDICINE

At the corner location shown on the sketch:

- On 6-19-95 found a 6" x 6" CUT JASPER GRANITE STONE, DOWN 1'
DATE
- left monument as found, lowered monument, removed monument (explain)
- On _____ Placed a _____
DATE

SKETCH OF REFERENCE TIES



BEARINGS OBSERVED WITH COMPASS

Statement of evidence relative to this corner location is on back of page.

JBM OCT '95
SPK00277.00.00.01

I hereby certify that this document and the data contained herein was prepared by me or under my direct supervision.

Renee W. Shippel 11/6/95
SIGNATURE DATE

License Number 17003

- Land Surveyor, Professional Engineer
- County Surveyor, County Engineer

OFFICE OF THE COUNTY RECORDER
County of Yellow Medicine

I hereby certify that this document was filed in the Co. recorders office at 10:10 A.M. on the 7 day of November A.D., 1995

County Recorder Dorinda S. Opelt
By _____, Deputy

DOCUMENT NO. 210274

The DNR Bureau of Engineering contacted the following for survey information:

Minnesota Secretary of State's Office
Mn/DOT Offices in St. Paul and Willmar
Yellow Medicine County Recorder's Office
Yellow Medicine County Highway Engineer's Office
Montevideo City Engineer's Office
Bonnema Surveys of Willmar
Moseng and Zieske Surveying, Inc. of Marshall
Michael Nyberg, RLS #13145, of Carlos
West Central Land Services, Inc. of Willmar
K.B. MacKichan and Associates, Inc. of Redwood Falls

- 1864 U.S. General Land Office notes obtained from the Secretary of State's Office show the corner marked with a wood post in a mound of earth with pits. The following bearing tree was also marked:
18" Cottonwood, South 26° West, 45 links (29.70 feet)
- 1895 Surveyor's Record Book, page 520, obtained from the County Recorder's Office, contains a survey by John Norgaard, County Surveyor. Survey states that all the government corners in Section 31 were found.
- 1895 Surveyor's Record Book, page 534, obtained from the County Recorder's Office, contains a survey by John Norgaard, County Surveyor. Survey shows that a jasper stone was found at corner. The corner is shown:
2680 feet from the east quarter corner of Section 30
- 1901 Surveyor's Record Book B, pages 9 and 71, obtained from the County Recorder's Office, contain a collection of what was found or set at government corners by John Norgaard, County Surveyor, in a township re-monumentation survey. Norgaard states "found stake as located by me 6 years ago, at equal proportional distance from the north quarter post Section 31, the north quarter post Section 32, the east quarter post Section 30 and the southeast corner Section 31. A 6" by 6" by 24" jasper granite stone was set at this location, top of monument 3" above ground. The corner is shown:
2694 feet from the north quarter corner of Section 31
2704 feet from the north quarter corner of Section 32
2685 feet from the east quarter corner of Section 30
5370 feet from the southeast corner of Section 31
- 1929 Surveyor's Record Book, page 520, obtained from the County Recorder's Office, contains a survey by John Norgaard, County Surveyor. Survey shows corner but does not indicate what was found or set. The corner is shown:
2694 feet from the north quarter corner of Section 31
2685 feet from the east quarter corner of Section 31
- 1930 Surveyor's Record Book, page 534, obtained from the County Recorder's Office, contains a survey by John Norgaard, County Surveyor. Survey shows that a jasper stone was found at corner. The corner is shown:
2680 feet from the east quarter corner of Section 30

1977 April, a Certificate of Location of Government Corner obtained from the County Recorder's Office, signed by Lyle Moseng, RLS #11943, shows that a square cut granite was found at corner with the aid of a backhoe and testimony from Benny Iverson. The following ties are shown to corner:

nail and bottle cap in 10" Ash, east, 18.96 feet
nail and bottle cap in 18" Tree, west, 17.09 feet
nail and bottle cap in 6" Ash, north, 24.40 feet
50.40 feet north of the edge of a road

1977 May, a subdivision of Section 30 shown on Certificate of Surveys in the northeast quarter of Section 30 and in the east half of Section 19 obtained from West Central Land Services, Inc. shows corner but does not indicate what was found or set. The corner is shown:

2679.74 feet from the north quarter corner of Section 31
2680.00 feet from the east quarter corner of Section 30

1977 May, a Certificate of Survey in the south half of Section 31 and notes obtained from Moseng and Zieske Land Surveying, Inc. show that a stone was found at corner. The following ties are shown to corner:

nail and bottle cap in 10" Ash, east-northeast, 18.96 feet
nail and bottle cap in 18" Tree, west, 17.09 feet
nail and bottle cap in 6" Ash, north-northeast, 24.40 feet
50 feet northeasterly at right angles to the northerly bank of river
2687.69 feet from the north quarter corner of Section 31
2685.34 feet from the east quarter corner of Section 31
5370.68 feet from the southeast corner of Section 31

1977 May, a Certificate of Location of Government Corner obtained from the County Recorder's Office, signed by Lyle Moseng, RLS #11943, shows that a square cut granite was found at corner with the aid of a backhoe and testimony from Benny Iverson. The following ties are shown to corner:

nail and bottle cap in 10" Ash, east, 18.96 feet
nail and bottle cap in 18" Tree, west-southwest, 17.09 feet
nail and bottle cap in 6" Ash, north, 24.40 feet
50 feet northeasterly at right angles to the northerly bank of river

The County Highway Engineer's Office has a copy of this certificate in its Corner Monument Book.

1978 May, October, DNR Bureau of Engineering found a 6" by 6" cut jasper granite stone down 8" in gravel at corner. Searched for but found no evidence of the GLO bearing tree. The following ties were taken to corner:

nail and DNR disc on the west side of a 4" Ash, north-northwest, 21.48 feet
nail and DNR disc on the north side of an 8" Ash, east-northeast, 18.84 feet
nail and DNR disc on the south side of an 18" Bur Oak, southwest, 17.17 feet
nail and DNR disc on the north side of a 30" Elm, west, 17.12 feet
set steel fence post on the north side of stone

1995 June 19, DNR Bureau of Engineering found a 6" by 6" cut jasper granite stone at corner. Searched for and found record ties as shown on sketch of reference ties. The stone was found to be:

- 2681.10 feet from the east quarter corner of Section 30
- 2679.91 feet from the north quarter corner of Section 31
- 5369.48 feet from the southeast corner of Section 31
- 2687.63 feet from the north quarter corner of Section 32
- 2684.08 feet from the east quarter corner of Section 31

Analysis of the above information led the DNR Bureau of Engineering to conclude that the found stone which was set in 1901 in place of a stake that was set for corner in 1895 at the lost position marks the location of the corner.

CERTIFICATE OF LOCATION OF GOVERNMENT CORNER

EAST QUARTER Corner of Section 31, Township 115 N, Range 30 W, 5th P.M.

STATE OF MINNESOTA, County of YELLOW MEDICINE

At the corner location shown on the sketch:

On 6-21-95 found a 1/2" REBAR, DOWN 0.3'
DATE

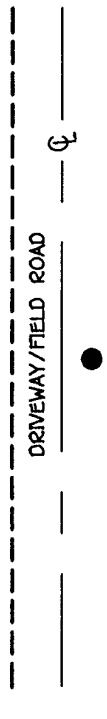
left monument as found, lowered monument, removed monument (explain)

On _____ Placed a _____
DATE

SKETCH OF REFERENCE TIES



CULTIVATED
FIELD



E 1/4 CORNER
SECTION 31

CULTIVATED
FIELD

NOTE:
MONUMENT IS
5.5' EAST OF CL N-5 ROAD
GOOD TIES NOT AVAILABLE

Statement of evidence relative to this corner location is on back of page.

JBM OCT '95
SPK.00277.00.00.01

I hereby certify that this document and the data contained herein was prepared by me or under my direct supervision.

Duane W. Sheppard 11/6/95
SIGNATURE DATE

License Number 17003

- Land Surveyor, Professional Engineer
 County Surveyor, County Engineer

OFFICE OF THE COUNTY RECORDER
County of Yellow Medicine

I hereby certify that this document was filed in the Co. recorders office at 10:05 A.M. on the 7 day of November A.D., 1995

County Recorder Dorinda Osborn
By _____, Deputy

DOCUMENT NO. 210273

East Quarter Corner Section 31, Township 115 North, Range 38 West

The DNR Bureau of Engineering contacted the following for survey information:

Minnesota Secretary of State's Office
Mn/DOT Offices in St. Paul and Willmar
Yellow Medicine County Recorder's Office
Yellow Medicine County Highway Engineer's Office
Montevideo City Engineer's Office
Bonnema Surveys of Willmar
Moseng and Zieske Surveying, Inc. of Marshall
Michael Nyberg, RLS #13145, of Carlos
West Central Land Services, Inc. of Willmar
K.B. MacKichan and Associates, Inc. of Redwood Falls

- 1864 U.S. General Land Office notes obtained from the Secretary of State's Office show the corner marked with a wood post in a mound of earth with pits.
- 1891 Surveyor's Record Book, page 47, obtained from the County Recorder's Office, contains a survey by Jonah Peterman, County Surveyor. Survey states that a stone which was set by G.E. Olds, County Surveyor, for the center of Section 32 was found to be very near correct. A description or a distance to the east quarter corner of Section 31 is not given.
- 1895 Surveyor's Record Book, page 520, obtained from the County Recorder's Office, contains a survey by John Norgaard, County Surveyor. Survey states that all the government corners in Section 31 were found.
- 1901 Surveyor's Record Book B, page 9, obtained from the County Recorder's Office, contains a collection of what was found or set at government corners by John Norgaard, County Surveyor, in a township re-monumentation survey. Norgaard shows a distance of 5370 feet along the east line of Section 31 and does not indicate what was found or set at the east quarter corner of Section 31.
- 1929 Surveyor's Record Book, page 520, obtained from the County Recorder's Office, contains a survey by John Norgaard, County Surveyor. Survey shows corner but does not indicate what was found or set. The corner is shown:
2685 feet from adjoining section corners
- 1977 May, a Certificate of Survey in the south half of Section 31 and notes obtained from Moseng and Zieske Land Surveying, Inc. show that a ½" diameter rerod was set for corner. The corner is shown:
60 feet north of a 36" tree
3 feet east of a north-south fence
6 inches east of a 5 foot steel post
midway and on line between adjoining section corners 2685.34 feet apart
- 1995 June 21, DNR Bureau of Engineering found ½" diameter rebar at corner. Searched for but found no evidence of the record ties. The rebar was found to be:
2684.08 feet from the northeast corner of Section 31
2685.40 feet from the northeast corner of Section 6
on line between adjoining section corners

Analysis of the above information led the DNR Bureau of Engineering to conclude that the found rebar marks the lost position of the corner which also agrees with the position established for corner in 1929.

CERTIFICATE OF LOCATION OF GOVERNMENT CORNER

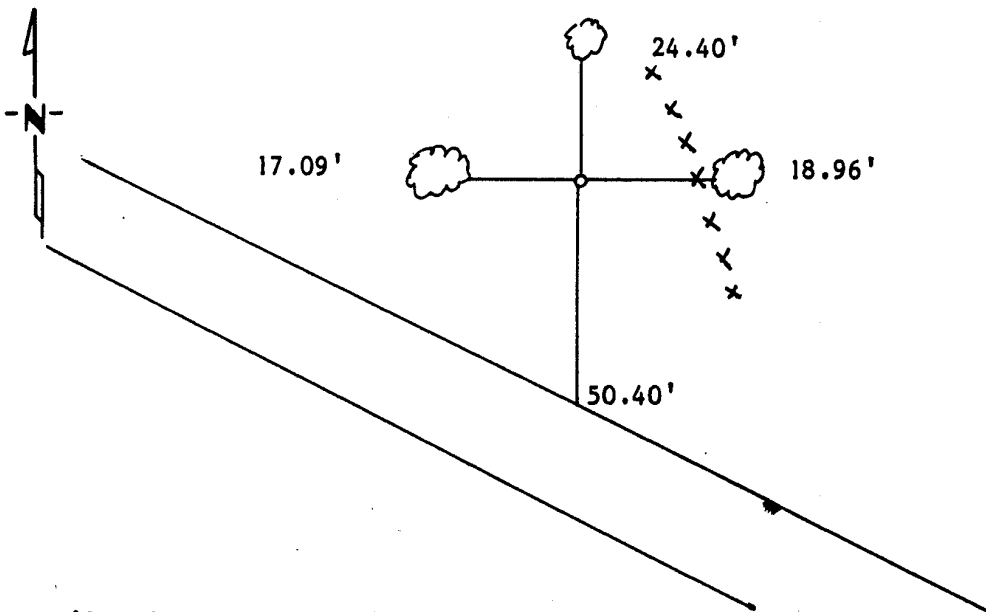
Northeast Corner of Section 31, Township 115N, Range 38W, 5th P.M.

STATE OF MINNESOTA, County of Yellow Medicine

At the corner location shown on the sketch:

- On 4/25/77 found a Square cut Granite stone with backhoe from information
DATE by Benny Iverson.
- left monument as found, lowered monument, removed monument (explain)
- On _____ placed a _____
DATE

SKETCH OF REFERENCE TIES



Nail and Bottel Cap 12" Ash W 17.09'
 Nail and Bottel Cap 6" Ash N 24.40'
 Nail and Bottel Cap 10" Ash E 18.96'
 50.40' to edge of road

Statement of evidence relative to this corner location is on back of page.

I hereby certify that this document and the data contained herein was prepared by me or under my direct supervision.

Lyle E. Mooney 2/22/89
SIGNATURE DATE

- Registration No. 11943
- Land Surveyor, Professional Engineer
 - County Surveyor, County Engineer

OFFICE OF THE COUNTY RECORDER
County of Yellow Medicine

I hereby certify that this document was filed in the Co. Recorders office at 10:25 A.M. on the 8 day of November A.D., 19 89

County Recorder Norman B. Gidore
By _____, Deputy

DOCUMENT NO. 196210

Statement of Evidence:

CERTIFICATE OF LOCATION OF GOVERNMENT CORNER

Corner to Section 31 Township 115 N Range 38 W No. _____

STATE OF MINNESOTA,

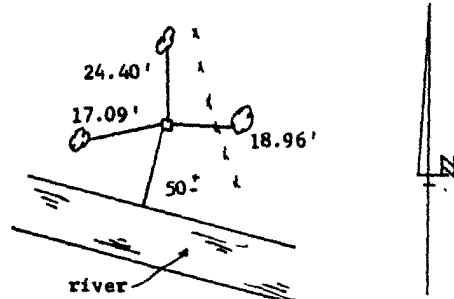
County of Yellow Medicine S.S.

I hereby certify that on the 7th day of May 1977,
that I, Lyle E. Moseng, a Registered Land Surveyor, ~~County Surveyor,~~
~~County Highway Engineer,~~ found the Northeast corner of Section 31
_____ which was evidenced by a square cut granite stone; fnd corner with a back hoe;
and from information from Benny Iverson and I further certify that to perpetuate the
location of such corner I did, at the exact location thereof, place a permanent
marker consisting of Left as Found.

I further certify that I established 3 references or witness monuments consist-
ing of three trees which reference or witness monuments are
located in the manner following.

Nail & bc in 6" Ash tree	N 24.40 ft
Nail & bc in 10" Ash tree	E 18.96 ft
Nail & bc in 18" tree	WSW 17.09 ft

Approx 50 feet north of the river



Dated at Marshall, Minnesota, this 29th day of May, 1980.

183039

OFFICE OF THE REGISTER OF DEEDS

County of Yellow Medicine

I hereby certify that the within instrument was filed in this office for
record on the 17 day of November A.D., 1983, at 3:45 o'clock P.M.

Norman J. Opdahl, County Recorder

Register of Deeds

by Kay Hendahl

Deputy

The DNR Bureau of Engineering contacted the following for survey information:

Minnesota Secretary of State's Office
Mn/DOT Offices in St. Paul and Willmar
Yellow Medicine County Recorder's Office
Yellow Medicine County Highway Engineer's Office
Montevideo City Engineer's Office
Bonnema Surveys of Willmar
Moseng and Zieske Surveying, Inc. of Marshall
Michael Nyberg, RLS #13145, of Carlos
West Central Land Services, Inc. of Willmar
K.B. MacKichan and Associates, Inc. of Redwood Falls

- 1864 U.S. General Land Office notes obtained from the Secretary of State's Office show the corner marked with a wood post in a mound of earth with pits.
- 1891 Surveyor's Record Book, page 47, obtained from the County Recorder's Office, contains a survey by Jonah Peterman, County Surveyor. Survey shows a stone at corner but does not indicate if found or set. Survey states that a stone which was set by G.E. Olds, County Surveyor, for the center of Section 32 was found to be very near correct. A distance from the center of section to the north quarter corner of Section 32 is not given.
- 1895 Surveyor's Record Book, page 534, obtained from the County Recorder's Office, contains a survey by John Norgaard, County Surveyor. Survey shows corner but does not indicate what was found or set. A distance to corner is not shown but a stake is shown at the south sixteenth corner of the southwest quarter of Section 29. The sixteenth corner is shown:
1350 feet from the northeast corner of Section 31
- 1901 Surveyor's Record Book B, pages 9 and 71, obtained from the County Recorder's Office, contain a collection of what was found or set at government corners by John Norgaard, County Surveyor, in a township re-monumentation survey. Norgaard states "found quarter post as located by me 6 years ago". The corner is shown:
2704 feet from the northeast corner of Section 31
- 1930 Surveyor's Record Book, page 534, obtained from the County Recorder's Office, contains a survey by John Norgaard, County Surveyor. Survey shows corner but does not indicate what was found or set. A distance to corner is not shown but a stake is shown at the south sixteenth corner of the southwest quarter of Section 29. The sixteenth corner is shown:
1350 feet from the northeast corner of Section 31
- No A right-of-way map for State Trunk Highway Number 67 obtained from Mn/DOT in St. Paul
Date shows a symbol for corner but does not indicate what was found or set and no distances or angles are shown to it.

1994 September 28, DNR Bureau of Engineering visited the area of corner and found its location to be in an area that was cut for the construction of Highway 67.

Located an old downed east-west fence 80 feet westerly of corner and an old east-west ridge line from 600 feet to 1000 feet easterly of corner. Also, located a north-south fence 1000 feet southerly of corner.

Located an old rotted wooden corner fence post with maintained fences north and south and a downed fence west in area of the center of Section 32. Searched around the fence post for the record stone but only found numerous boulders and field stones.

Located an old downed corner fence post with downed fences north, south, east, and west in the area of the S 1/16 SW 1/4 of Sec. 29. Scanned the area with an electronic metal detector but no metal monuments were found. The corner fence post was found to be:

1356.6 feet from the northeast corner of Section 31

Computed a position for the north quarter corner of Section 32 at the intersection of the following lines:

- A) the northerly extension of a line from the corner fence post found in the area of the center of Section 32 thru the north-south fence located 1000 feet southerly of the area of corner
- B) the easterly extension of the east-west fence located 80 feet westerly of the area of corner

The computed position was found to be:

2504.62 feet from the northeast corner of Section 32

2687.63 feet from the northeast corner of Section 31

2818.93 feet from the corner fence post found in the area of the center of Section 32

63.47 feet north and 0.40 of a foot east of the lost position for corner

1.35 feet north of the westerly extension of the east-west ridge line located from 600 feet to 1000 feet easterly of corner

11.5 feet east of the center line of driveway

Conducted a field search at the computed position for corner by scanning the area with an electronic metal detector but no metal attraction was obtained.

The old downed corner fence post located in the area of the S 1/16 SW 1/4 Sec 29 was found to be:

37.59 feet north and 10.79 feet east of the computed sixteenth corner

1995 June 18, DNR Bureau of Engineering set a DNR Survey Marker at the computed position for corner as shown on the sketch of reference ties.

Analysis of the above information led the DNR Bureau of Engineering to conclude that the computed position for corner at the projected intersection of fences southerly and westerly marks the obliterated location of the corner.

CERTIFICATE OF LOCATION OF GOVERNMENT CORNER

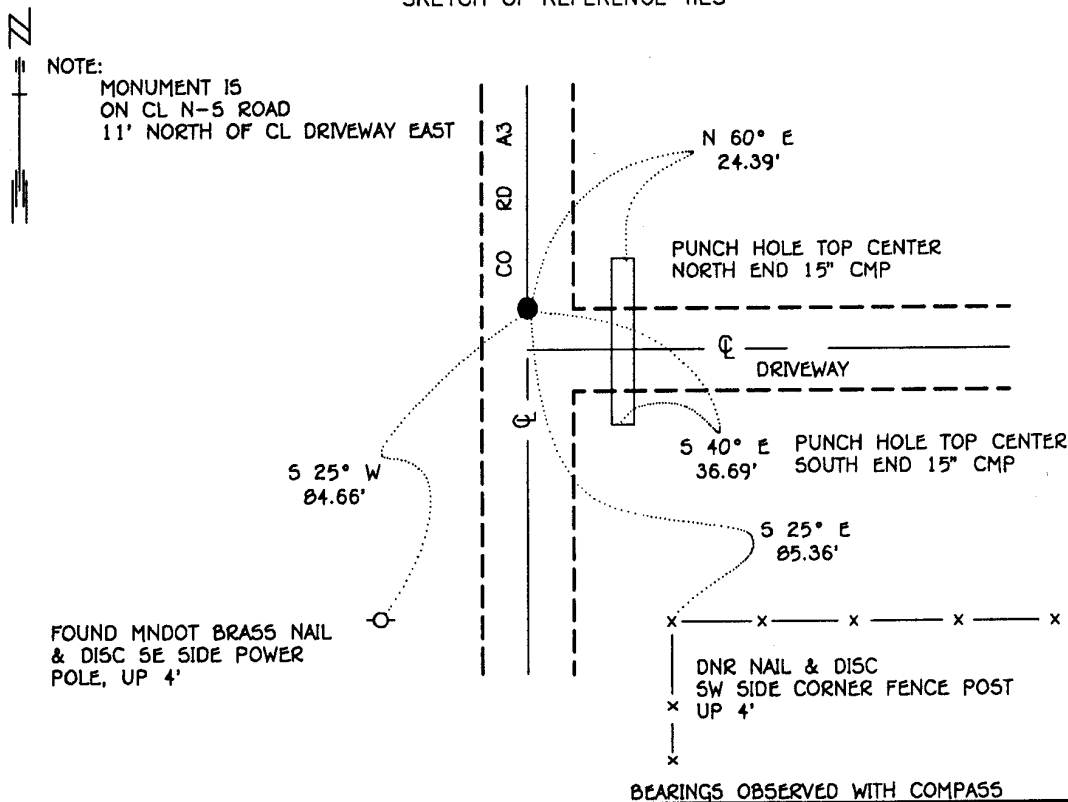
EAST QUARTER Corner of Section 32, Township 115 N, Range 30 W, 5th P.M.

STATE OF MINNESOTA, County of YELLOW MEDICINE

At the corner location shown on the sketch:

- On _____ found a _____
DATE
- left monument as found, lowered monument, removed monument (explain)
- On 6-14-95 Placed a 3/4" x 24" REBAR WITH ALUMINUM CAP STAMPED
DATE "DNR SURVEY MARKER", DOWN 0.2'

SKETCH OF REFERENCE TIES



Statement of evidence relative to this corner location is on back of page.

JBM OCT '95
SPK.00277.00.00.01

I hereby certify that this document and the data contained herein was prepared by me or under my direct supervision.

Duane W. Shopp 11/6/95
SIGNATURE DATE

License Number 17003

- Land Surveyor, Professional Engineer
 County Surveyor, County Engineer

OFFICE OF THE COUNTY RECORDER
County of Yellow Medicine

I hereby certify that this document was filed in the Co. recorders office at 10:00 A.M. on the 7 day of November A.D., 1995

County Recorder William J. Gaddis
By _____, Deputy
DOCUMENT NO. 210272

The DNR Bureau of Engineering contacted the following for survey information:

Minnesota Secretary of State's Office
Mn/DOT Offices in St. Paul and Willmar
Yellow Medicine County Recorder's Office
Yellow Medicine County Highway Engineer's Office
Montevideo City Engineer's Office
Bonnema Surveys of Willmar
Moseng and Zieske Surveying, Inc. of Marshall
Michael Nyberg, RLS #13145, of Carlos
West Central Land Services, Inc. of Willmar
K.B. MacKichan and Associates, Inc. of Redwood Falls

1864 U.S. General Land Office notes obtained from the Secretary of State's Office show the corner marked with a wood post in a mound of earth with pits.

1884 Surveyor's Record Book, page 25, obtained from the County Recorder's Office, contains a survey by Jonah Peterman, County Surveyor. Survey states that a post was found at corner.

Survey shows that a stone was set for the center of Section 33 at the intersection of the quarter lines. A distance from the center of Section 33 to the east quarter corner of Section 32 is not given. A stone was also set for the north sixteenth corner of the southeast quarter of Section 33, 19.87 chains (1311.42') from the center of section.

1891 Surveyor's Record Book, page 47, obtained from the County Recorder's Office, contains a survey by Jonah Peterman, County Surveyor. Survey shows that an iron post was established at corner. No information is given about how the location of the corner was determined. The corner is shown:

38.65 chains (2550.90') from a stone which was set by G.E. Olds, County Surveyor, for the center of Section 32

No Date A right-of-way map for State Trunk Highway Number 67 obtained from Mn/DOT in St. Paul shows an iron stake at corner but does not indicate if found or set and no distances or angles are shown to it.

1991 Bob Jones, Project Surveyor for Mn/DOT in Willmar, computed the lost position for corner and conducted a field search by scanning the area with an electronic metal detector but no metal attraction was obtained. A spike was found 84 feet south of the computed lost position. A position for corner was not determined.

1994 September 27, DNR Bureau of Engineering visited the area of corner and found its location to be in north-south County Road A-3. The road surface in area of corner is at natural ground and was probably cut when the road was built. No east-west occupation lines were found in the area of corner.

Located an old rotted wooden corner fence post with maintained fences north and south and a downed fence west in area of the center of Section 32. Searched around the fence post for the record stone but only found numerous boulders and field stones.

1994 December 5, DNR Bureau of Engineering searched for the record stone next to a corner fence post with fences north, south and west found in the area of the N 1/16 corner of the SE 1/4 of Section 33. Some stones were found next to the corner fence post but none of them appeared to have been set by a surveyor.

Also, searched for the record stone next to a corner fence post in a swamp with fences north, south and east found in the area of the center of Section 33. No stones were found next to the corner fence post.

Measured a distance of 1298 feet between the corner fence post found in the area of the N 1/16 SE 1/4 Sec. 33 and the corner fence post found in the area of the center of Sec. 33.

Computed a position for corner on the center line of County Road A-3 and on the easterly extension of a line from the west quarter corner of Section 32 thru the corner fence post found in the area of the center of Section 32. The computed position was found to be:

2823.25 feet from the northeast corner of Section 32

2655.29 feet from the northeast corner of Section 5

2560.62 feet from the corner fence post found in the area of the center of Section 32

3.68 feet south of the westerly extension of a straight line from the corner fence post found in the area of the N 1/16 SE 1/4 Sec. 33 thru the corner fence post found in the area of the center of Section 33

83.67 feet south and 20.78 feet west of the lost position for corner

Conducted a field search at the computed position for corner by scanning the area with an electronic metal detector but no metal attraction was obtained.

1995 June 14, DNR Bureau of Engineering set a DNR Survey Marker at the computed position for corner as shown on the sketch of reference ties.

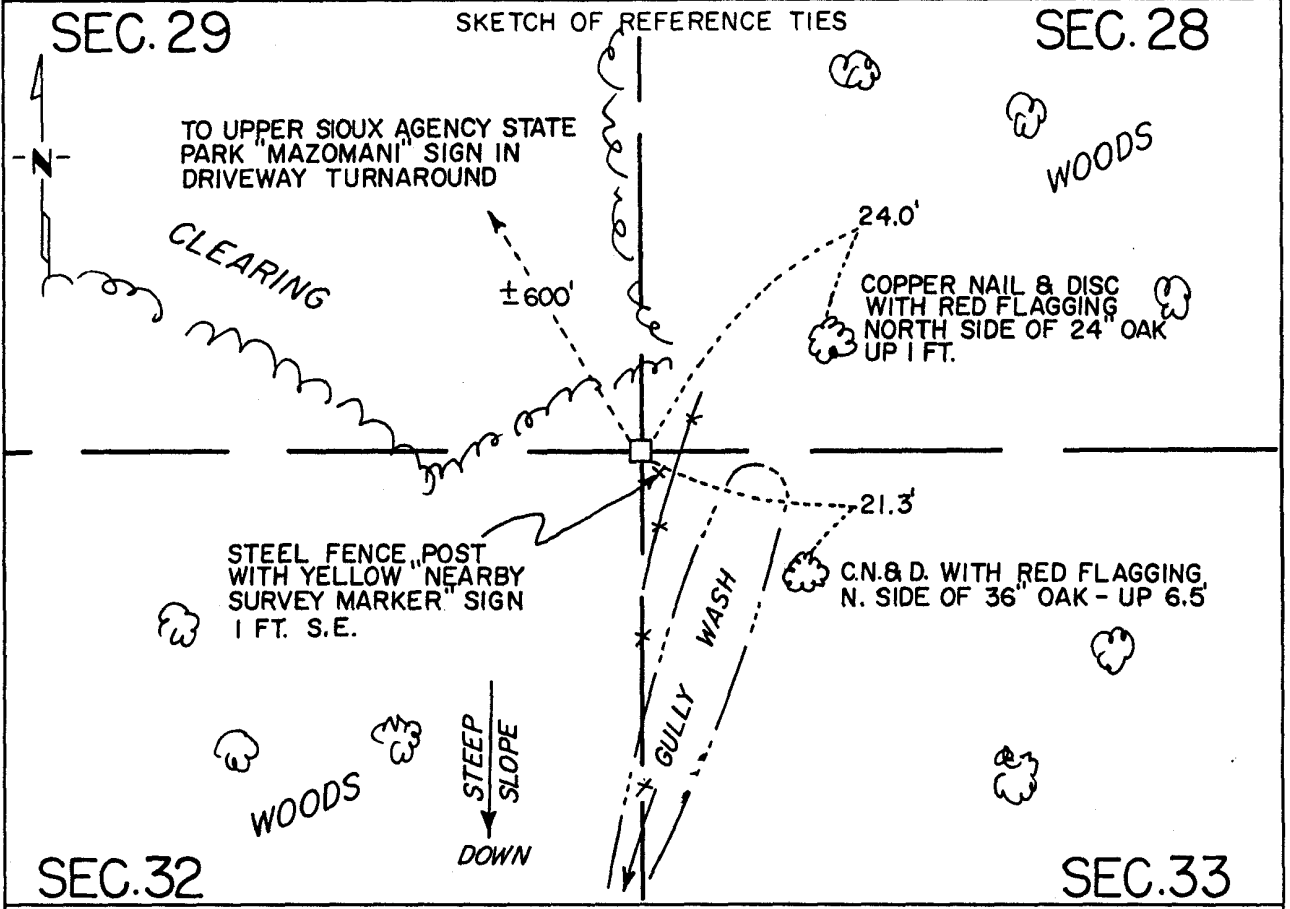
Analysis of the above information led the DNR Bureau of Engineering to conclude that the computed position for corner on the center line of County Road A-3 and on the easterly extension of a line from the west quarter corner of Section 32 thru a corner fence post found in the area of the center of Section 32 marks the location of the corner.

CERTIFICATE OF LOCATION OF GOVERNMENT CORNER

Northeast Corner of Section 32, Township 115 N, Range 38 W, 5th P.M.
STATE OF MINNESOTA, County of Yellow Medicine

At the corner location shown on the sketch:

- On July 17, 1991 found a 6" x 6" square cut granite monument projecting about
DATE 5" above ground
- left monument as found, lowered monument, removed monument (explain)
- On _____ placed a _____
DATE _____



Statement of evidence relative to this corner location is on back of page.

I hereby certify that this document and the data contained herein was prepared by me or under my direct supervision.

Robert Jones 11-8-91
SIGNATURE DATE

Registration No. 11864

Land Surveyor, Professional Engineer
 County Surveyor, County Engineer

OFFICE OF THE COUNTY RECORDER
County of Yellow Medicine

I hereby certify that this document was filed in the Co. Recorders office at 10:20 A.M. on the 12 day of November A.D., 19 91

County Recorder Richard G. ...
By _____, Deputy
DOCUMENT NO. 200647

Statement of Evidence:

Northeast Corner Section 32, T 115 N, R 38 W

- 1864 - The original Public Land Survey was completed by Charles E. Davis and James Watson Webb, Jr. A wood post was set in a dirt mound to mark the corner. Pits were dug to build the mound.
- 1901 - John Norgaard, Yellow Medicine County Surveyor, found a stake in the government mound. He set a 6" by 6" by 24" long square cut granite monument so that the top was 3" above ground to perpetuate the corner location. This information is in Surveyor's Book B, page 70 in the Yellow Medicine County Recorder's office.
- 1934 - The Minnesota Highway Department right of way map from this era shows that a stone was found at the corner. The map depicts the east line of Section 32 as crossing the centerline of T.H. 67 about at P.O.T. 302+95 and as being about 1150 feet northerly of the centerline of T.H. 67 as measured along the section line. These distances were scaled on the right of way map.
- 1991 - R. C. Jones, Registered Land Surveyor with Mn/DOT, found a 6" by 6" square cut granite monument projecting about 5" above the ground.

The monument is located about 340 feet north of a curve in a gravel road, which more or less parallels the Yellow Medicine River in this area. It is about 530 feet north of the northwesterly side of the Yellow Medicine River. It is nearly in line with a broken down barbed wire fence located between the monument and the road to the south. It is 1158.88 feet northerly of T.H. 67 P.O.T. 303+05.73 as measured along the section line.

The granite monument is accepted as the corner location because the record evidence indicates that it is a perpetuation of the original government corner.

For additional information, contact the Mn/DOT Surveys Section at Willmar, Mn 56201.