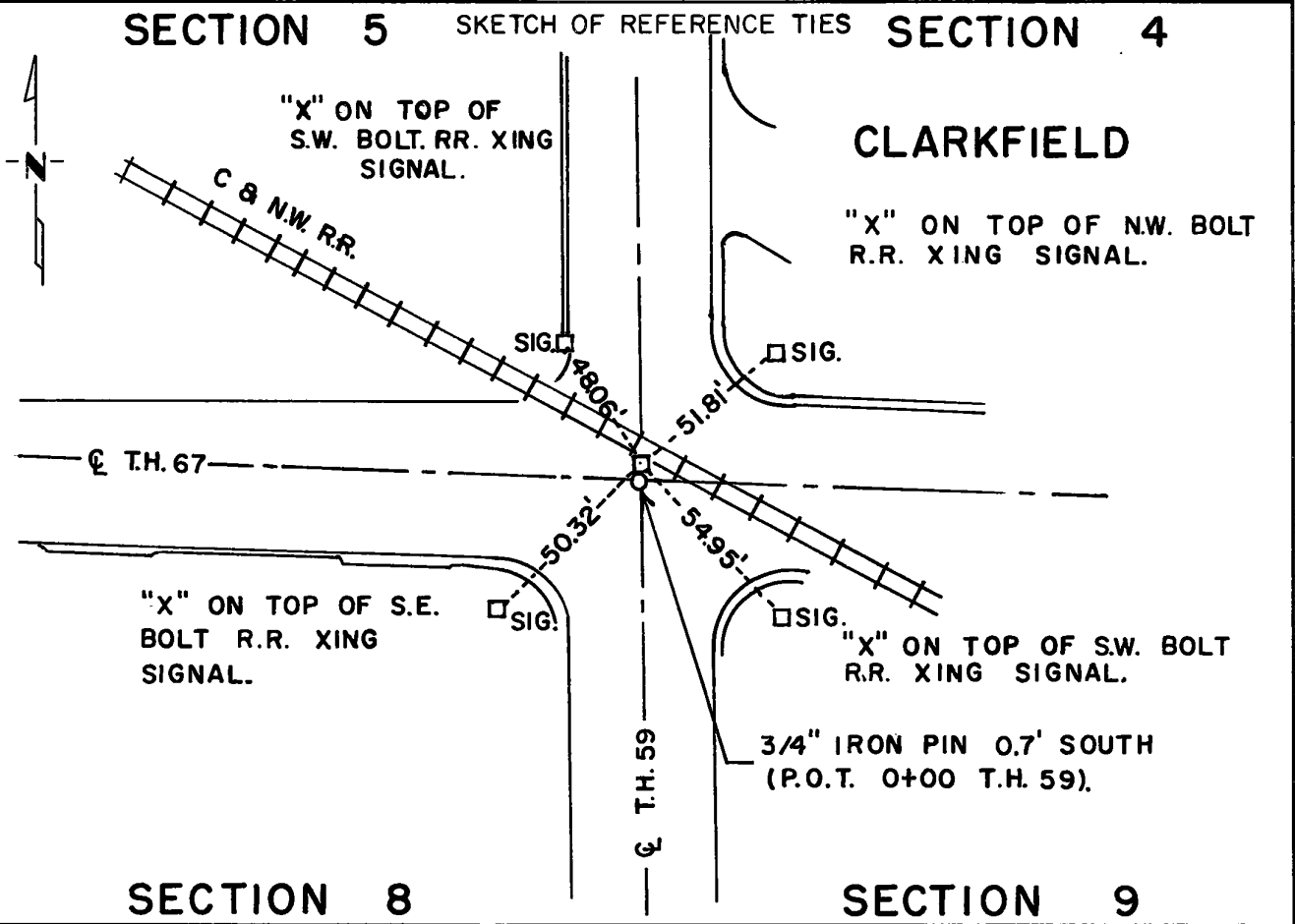


CERTIFICATE OF LOCATION OF GOVERNMENT CORNER

North East Corner of Section 8, Township 115N, Range 41W, 5th P.M.
 STATE OF MINNESOTA, County of Yellow Medicine

At the corner location shown on the sketch:

- On Mar. 9, 1973 found a 6" x 6" x 24" quarried granite stone 4" below
DATE
bituminous roadway surface 0.7' North of T.H. 59 P.O.T. Sta. 0+00.
 left monument as found, lowered monument, removed monument (explain)
- On Mar. 9, 1973 placed a railroad spike on surface with a punch mark above
DATE
center of stone.



Statement of evidence relative to this corner location is on back of page.

I hereby certify that this document and the data contained herein was prepared by me or under my direct supervision.

Goodwin R. Heimbold 1-10-74
SIGNATURE DATE

Registration No. 5761

- Land Surveyor, Professional Engineer
- County Surveyor, County Engineer

OFFICE OF THE REGISTER OF DEEDS
 County of Yellow Medicine 162720

I hereby certify that this document was filed in the Reg. of Deeds office at 9:35 P.M. on the 11 day of January A.D., 1974

Register of Deeds Norman J. Opdahl

By Kay Nordahl, Deputy

DOCUMENT NO. 162720

Statement of Evidence:

On March 9, 1973 a 6" x 6" x 24" quarried granite stone was found in place, 4 inches below the bituminous roadway surface. Located 0.7 feet North of T.H. 59 P.O.T. Sta. 0+00 marked by a 3/4" iron pin in place.

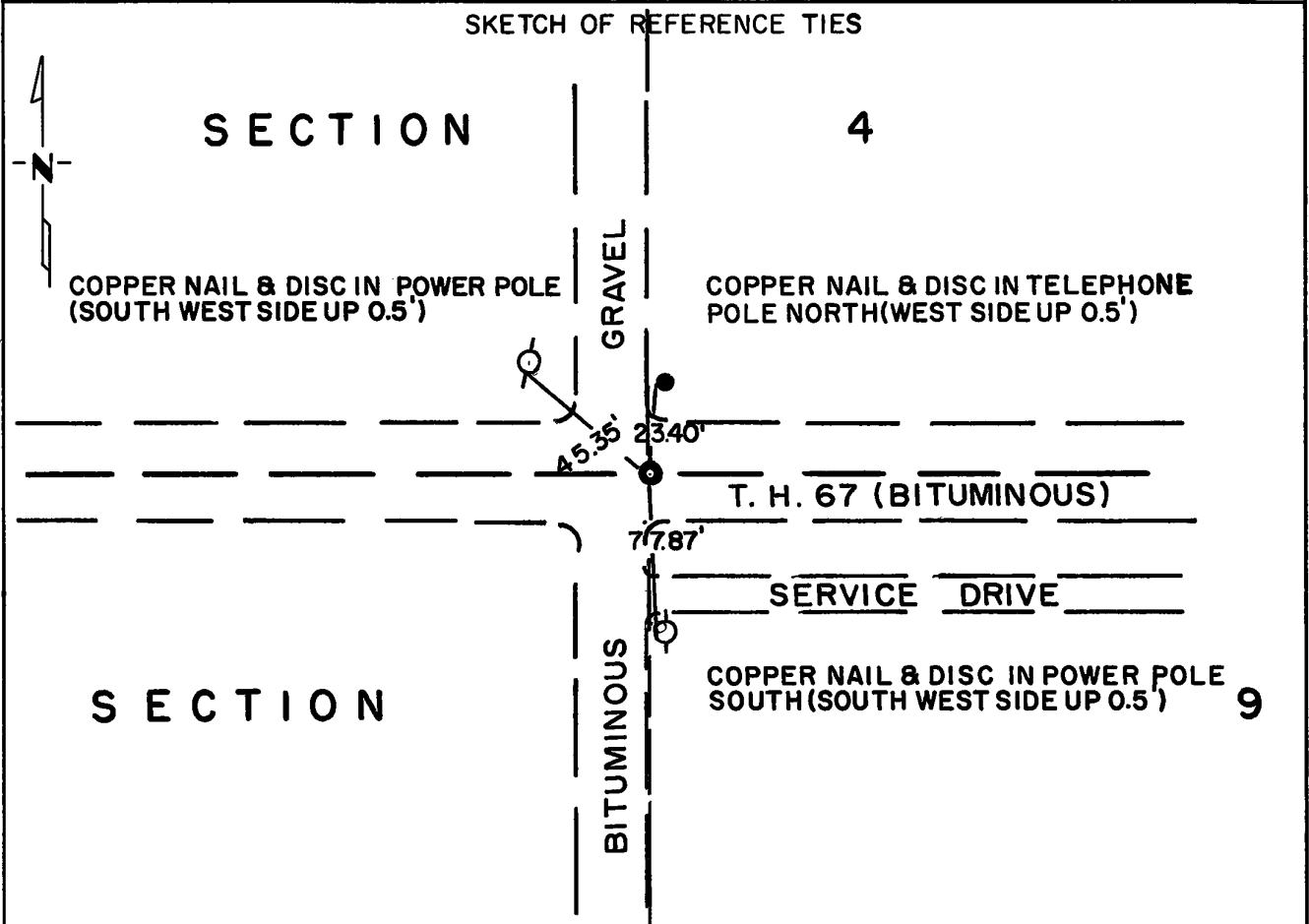
Drilled hole at center of stone in place and placed a railroad spike on surface of the roadway with a punch mark above center of stone.

CERTIFICATE OF LOCATION OF GOVERNMENT CORNER

North Quarter Corner of Section 9, Township 115N, Range 41W, 5th P.M.
 STATE OF MINNESOTA, County of Yellow Medicine

At the corner location shown on the sketch:

- On May 17, 1974 found a 1 inch iron pipe on centerline highway and on East edge street North-South down 18 inches.
DATE
- left monument as found, lowered monument, removed monument (explain)
- On July 19, 1974 placed a Minnesota Highway Department cast iron monument with 3/4 inch iron under monument (cast iron down 1/8 inch).
DATE



Statement of evidence relative to this corner location is on back of page.

I hereby certify that this document and the data contained herein was prepared by me or under my direct supervision.

Goodwin R. Heindahl 9-23-74
SIGNATURE DATE

Registration No. 5761

- Land Surveyor, Professional Engineer
- County Surveyor, County Engineer

OFFICE OF THE REGISTER OF DEEDS
 County of Yellow Medicine

I hereby certify that this document was filed in the Reg. of Deeds office at 1:50 P. .M. on the 24 day of SEPTEMBER A.D., 19 74

Register of Deeds Norman J. Opdahl

By Key Nordahl, Deputy

DOCUMENT NO. 163995

Statement of Evidence: NORTH QUARTER CORNER SECTION 9, T115N, R41W

In 1910 a large field stone and iron bolt marked the corner. It was used in platting in Clarkfield.

The Minnesota Highway Department right of way map shows reference to a 1 inch iron pipe prior to 1956.

On May 17, 1974 the Minnesota Highway Department found a 1 inch iron pipe on centerline of East-West Highway (T.H. 67) and on East edge of streets North-South.

I could not determine who placed the stone and bolt or who replaced it with the 1 inch iron pipe.

On July 19, 1974 the Minnesota Highway Department removed the 1 inch iron pipe and replaced it with a 3/4 inch iron pin with a cast iron monument on top.

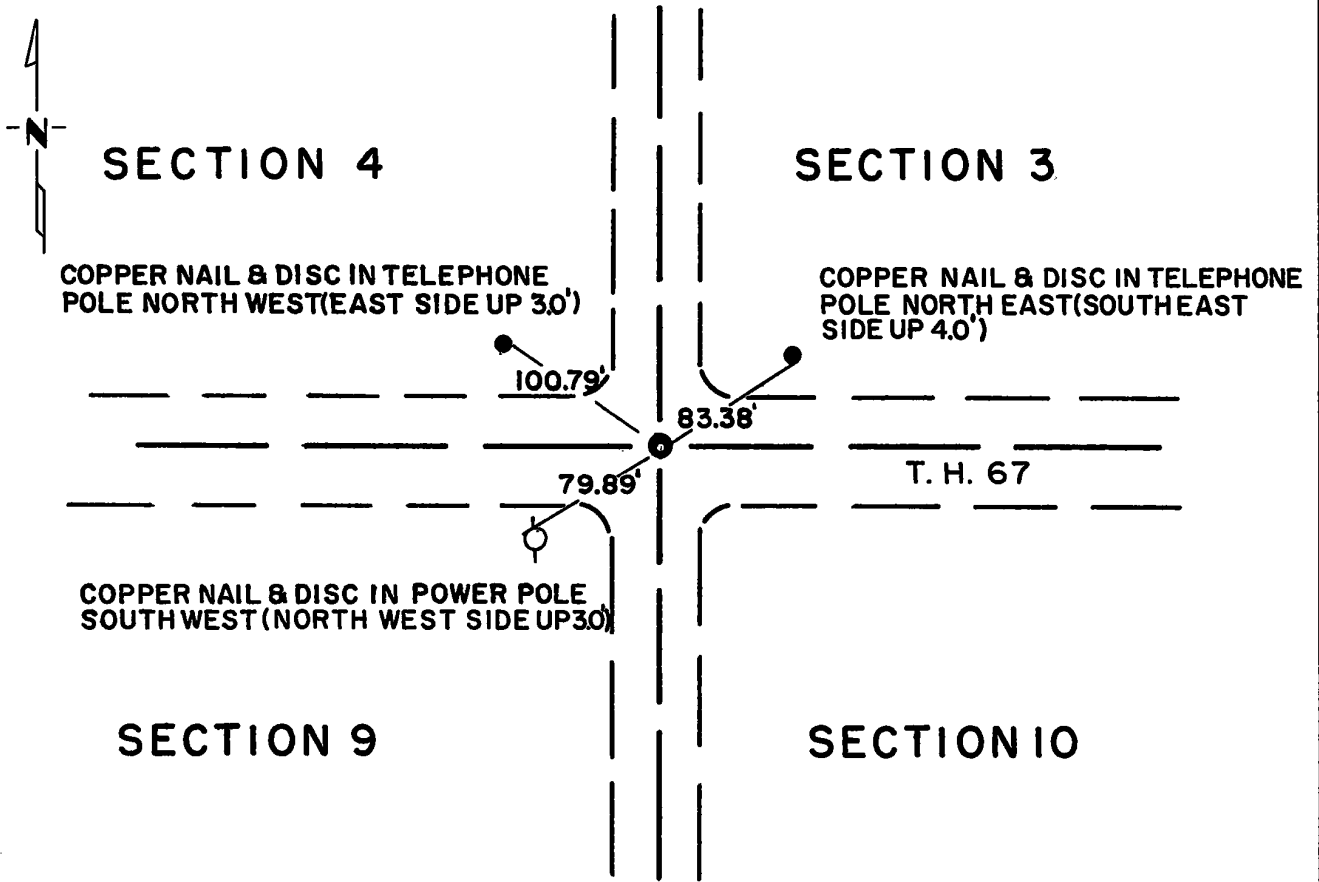
CERTIFICATE OF LOCATION OF GOVERNMENT CORNER

Northeast Corner of Section 9, Township 115N, Range 41W, 5th P.M.
 STATE OF MINNESOTA, County of Yellow Medicine

At the corner location shown on the sketch:

- On May 22, 1974 found a 6 inch x 6 inch x 24 inch jasper monument down 4.0
DATE foot below road surface on centerline North-South road and 1.9
foot North centerline T.H. 67.
 - left monument as found, lowered monument, removed monument (explain)
- On July 19, 1974 placed a Minnesota Highway Department cast iron monument with
DATE 3/4 inch iron pin under (cast iron down 1/2 inch).

SKETCH OF REFERENCE TIES



Statement of evidence relative to this corner location is on back of page.

I hereby certify that this document and the data contained herein was prepared by me or under my direct supervision.

Goodwin R. Heimdahl 9-23-74
SIGNATURE DATE

Registration No. 5761

- Land Surveyor, Professional Engineer
- County Surveyor, County Engineer

OFFICE OF THE REGISTER OF DEEDS
 County of Yellow Medicine

I hereby certify that this document was filed in the Reg. of Deeds office at 1:30 P.M. on the 24 day of SEPTEMBER A.D., 19 74

Register of Deeds Norman J. Opdahl

By Kay Verdahl, Deputy

DOCUMENT NO. 163993

Statement of Evidence: NORTHEAST CORNER SECTION 9, T115N, R41W

In 1901 John E. Norgaard found a stake and set a 6 inch x 6 inch x 24 inch jasper monument to mark the corner.

Prior to 1956 the Minnesota Highway Department found the jasper monument in place.

On May 22, 1974 the Minnesota Highway Department found the jasper monument on centerline of North-South township road and 1.9 feet North of centerline of East-West highway (T.H. 67).

On July 19, 1974 the Minnesota Highway Department placed a cast iron monument with a 3/4 inch iron pin below it to mark the corner.

CERTIFICATE OF LOCATION OF GOVERNMENT CORNER

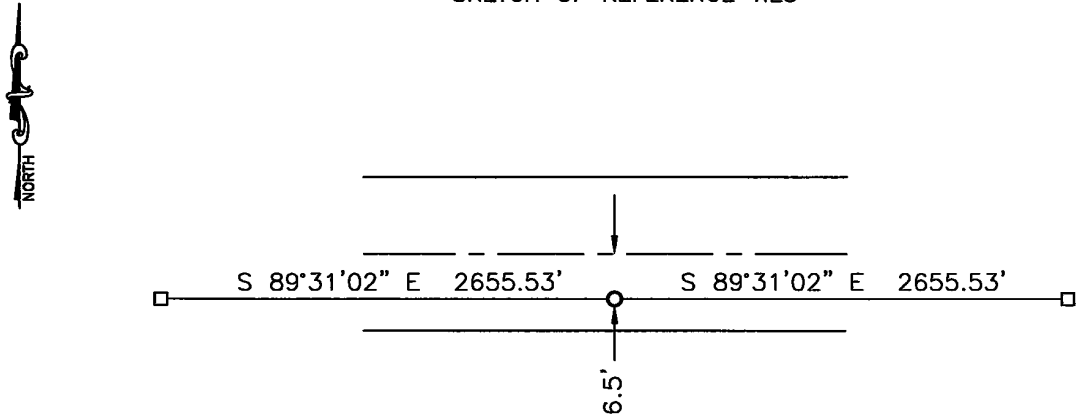
NORTH QUARTER Corner of Section 10, Township 115, Range 41, 5TH P.M.

STATE OF MINNESOTA, County of YELLOW MEDICINE

At the corner location shown on the sketch:

- On _____ found a _____
DATE
- left monument as found, lowered monument, removed monument (explain)
- On 08-02-2012 placed a survey spike with seal #43844.
DATE

SKETCH OF REFERENCE TIES



Minnesota State Plane Coordinate
System Yellow Medicine County Datum
NAD83 (1996)

N: 190782.485
E: 531729.085

Statement of evidence relative to this corner location is on back of page.

I hereby certify that this document and the data contained herein was prepared by me or under my direct supervision.

[Signature]
SIGNATURE

2/18/13
DATE

Registration No. 43844

- Land Surveyor, Professional Engineer
- County Surveyor, County Engineer

OFFICE OF THE COUNTY RECORDER

County of _____

I hereby certify that this document was filed in the Co. Recorders office at _____ .M on the _____ day of _____ A.D. 20 _____

County Recorder _____

By _____, Deputy

DOCUMENT NO. _____

Statement of Evidence

In 1864, Chas. E. Davis and J. W. Webb, Jr. did the original subdivision of the township.

On August 2, 2012, Bueltel-Moseng Land Surveying set a survey spike with seal #43844 midway and on line between the section corners. It is 6.5' south of the centerline of Minnesota Trunk Highway No. 67.

Doc# 257335 Fee: \$0.00 2 Pages
Property & Public Services
Property Records Division
Yellow Medicine County, Minnesota
I hereby certify that the within instrument
was filed on March 22, 2013 at 10:40 AM

N/C
Bueltel-Moseng Land Surveying
PO Box 32
Marshall, MN 56258

Janel Timm, Yellow Medicine County Recorder

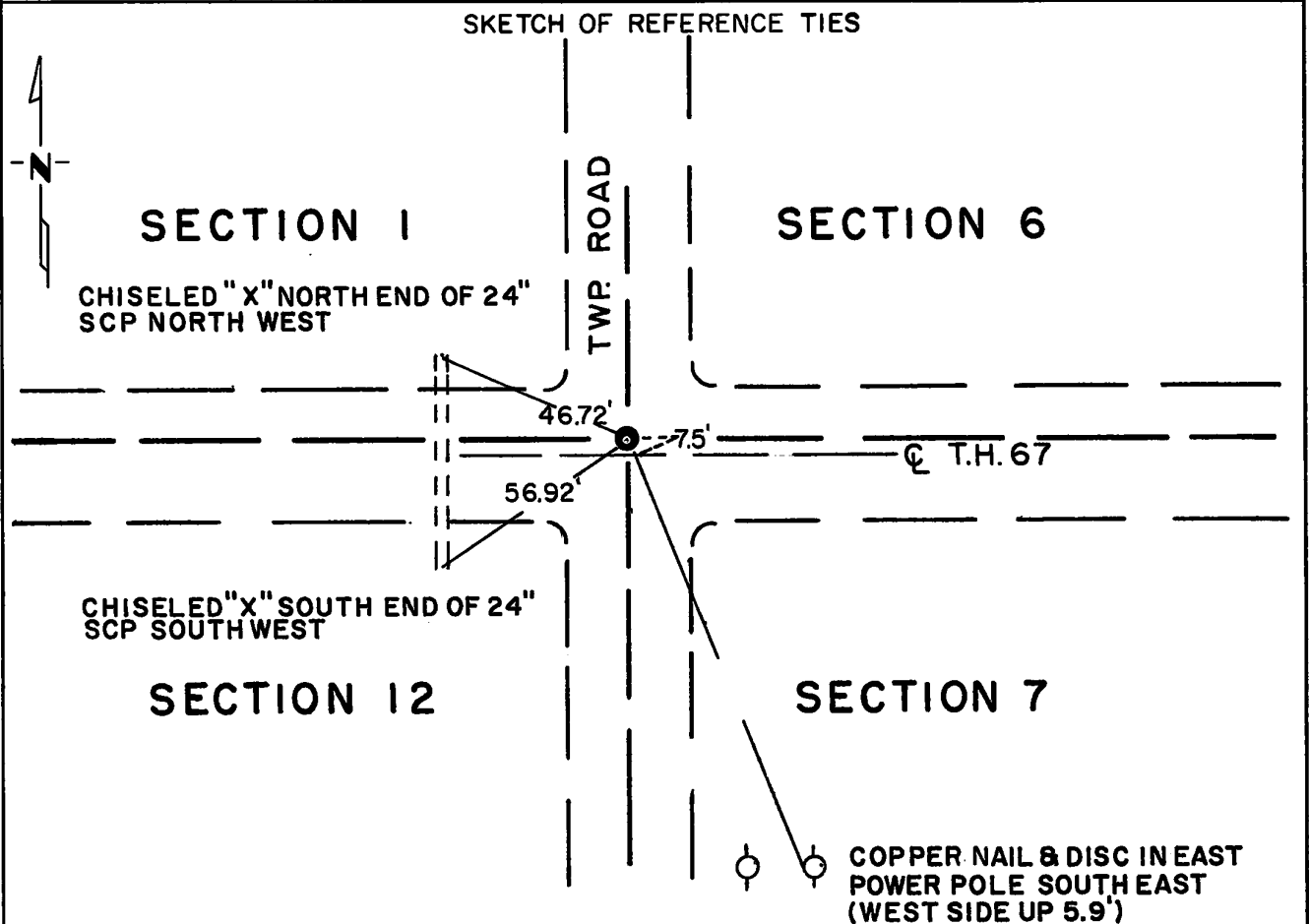
By Debra Blom Deputy

CERTIFICATE OF LOCATION OF GOVERNMENT CORNER

Northeast Corner of Section 12, Township 115N, Range 41W, 5th P.M.
 STATE OF MINNESOTA, County of Yellow Medicine

At the corner location shown on the sketch:

- On May 22, 1974 found a 2 inch x 3 inch wood stake down 6.0 feet below road
DATE surface on centerline North-South township road and 7.5 feet
North centerline T.H. 67.
- left monument as found, lowered monument, removed monument (explain)
- On July 19, 1974 placed a Minnesota Highway Department cast iron monument with
DATE a 3/4 inch iron pin under (cast iron down 1/2 inch).



Statement of evidence relative to this corner location is on back of page.

I hereby certify that this document and the data contained herein was prepared by me or under my direct supervision.

Goodwin R. Heindel 9-23-74
SIGNATURE DATE

Registration No. 5761

- Land Surveyor, Professional Engineer
- County Surveyor, County Engineer

OFFICE OF THE REGISTER OF DEEDS
 County of Yellow Medicine

I hereby certify that this document was filed in the Reg. of Deeds office at 1:40 P.M. on the 24 day of SEPTEMBER A.D., 19 74

Register of Deeds Norman J. Opdahl
 By Kay Nordahl, Deputy

DOCUMENT NO. 163994

Statement of Evidence: NORTHEAST CORNER SECTION 12, T115N, R41W

In 1895 and 1901 John E. Norgaard found a wood stake. In 1901 he replaced the wood stake with a 6 inch x 6 inch x 24 inch jasper monument.

In 1921 John Norgaard found the jasper monument in place.

Prior to 1956 the Minnesota Highway Department found a wood stake in place.

On May 22, 1974 the Minnesota Highway Department found a 2 inch x 3 inch wood stake on centerline of North-South road and 7.5 feet North of centerline of East-West Highway (T.H. 67).

I could not determine who replaced the jasper monument with a wood stake.

On July 19, 1974 the Minnesota Highway Department placed a cast iron monument with a 3/4 inch iron pin below it to mark the corner.

CERTIFICATE OF LOCATION OF GOVERNMENT CORNER

NW Corner of Section 13, Township 115 N, Range 41 W 5th P.M.

STATE OF MINNESOTA, County of YELLOW MEDICINE

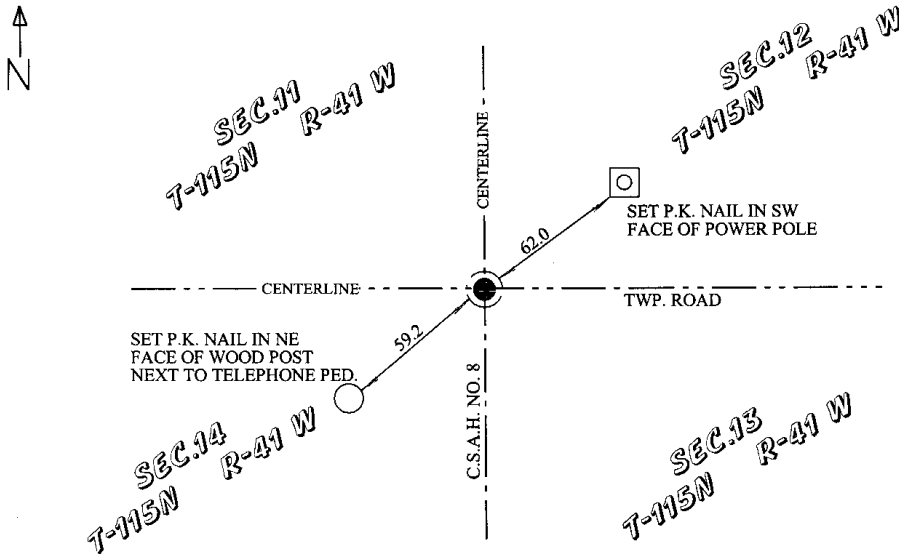
At the corner location shown on the sketch

On found a
Date

left monument as found, lowered monument removed monument(explain)

On 3-14-06 placed a MAGNETIC NAIL
Date

SKETCH OF REFERENCE TIES



Statement of evidence relative to this corner location is on back of page.

I hereby certify that this document and the data contained herein was prepared by me or under my direct supervision.

B. J. [Signature] 3-16-06
Signature Date

Registration No. 42300

Land Surveyor, County Surveyor,

Professional Engineer County Engineer.

OFFICE OF THE COUNTY RECORDER

County of

I hereby certify that this document was filed in the County Recorders office atM. on theday ofA.D., 20.....

County Recorder.....

By Deputy

DOCUMENT NO.

STATEMENT OF EVIDENCE:

NORTHWEST CORNER OF SECTION 13, TOWNSHIP 115 N, RANGE 41 W, YELLOW MEDICINE COUNTY, MINNESOTA

JULY 1916 - H.L. WADELL MADE A RESURVEY OF SECTION 14, TOWNSHIP 115N, RANGE 41W. HE REPORTS ALL SECTION CORNERS FOUND. SET QUARTER CORNERS AT EQUAL DISTANCE. NO TIES WERE RECORDED.

MARCH 13, 2006- BENJAMIN C. O'MALLEY SEARCHED FOR ALL ORIGINAL GOVERNMENT MONUMENT EVIDENCE. NON WAS FOUND. SET A MAGNETIC NAIL AT THE INTERSECTION OF THE CENTERLINE OF C.S.A.H. NO. 8 AND THE CENTERLINE OF THE TOWNSHIP ROAD. NEW TIES WERE MADE.

Doc# 240198 Fee: \$.00 2 Pages

Office of County Recorder
Yellow Medicine County, Minnesota
I hereby certify that the within instrument
was filed on March 16, 2006 at 10:25 AM

Kay Zempel, Yellow Medicine County Recorder

BY Hendi J. Bakke Deputy

N/c O'Malley & Boe Land Surveyors, Inc.
328 SW. 3rd St, Willmar 56201

CERTIFICATE OF LOCATION OF GOVERNMENT CORNER

.....W 1/4.....Corner of Section.....13.....Township.....115 N.....Range 41 W 5th P.M.

STATE OF MINNESOTA, County of.....YELLOW MEDICINE

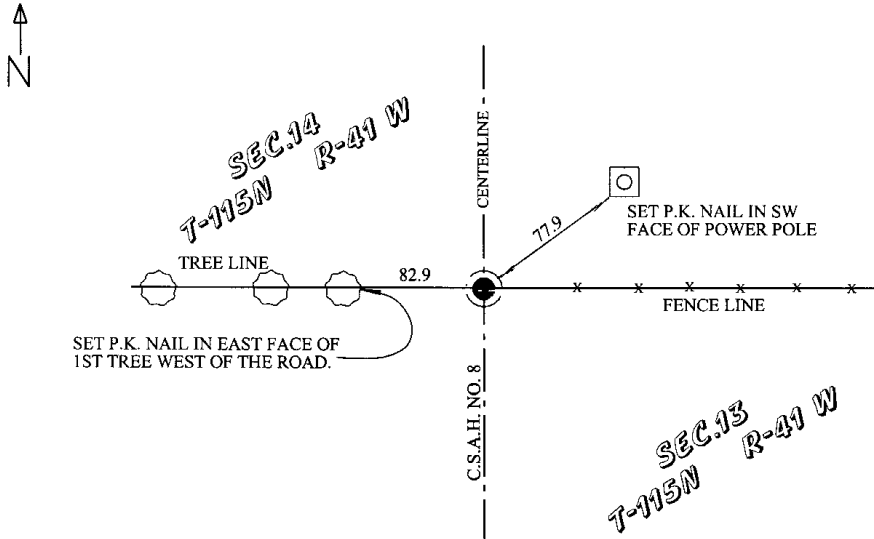
At the corner location shown on the sketch

On.....found a.....
Date

left monument as found, lowered monument removed monument(explain)

On.....3-14-06.....placed a.....MAGNETIC NAIL.....
Date

SKETCH OF REFERENCE TIES



Statement of evidence relative to this corner location is on back of page.

I hereby certify that this document and the data contained herein was prepared by me or under my direct supervision.

Ben Conroy
Signature Date 3-16-06

Registration No.42300.....

Land Surveyor, County Surveyor,

Professional Engineer County Engineer.

OFFICE OF THE COUNTY RECORDER

County of

I hereby certify that this document was filed in the County Recorders office at.....M. on theday of.....A.D., 20.....

County Recorder.....

By, Deputy

DOCUMENT NO.

STATEMENT OF EVIDENCE:

WEST QUARTER CORNER OF SECTION 13, TOWNSHIP 115 N, RANGE 41 W, YELLOW MEDICINE COUNTY, MINNESOTA

JULY 1916 - H.L. WADELL MADE A RESURVEY OF SECTION 14, TOWNSHIP 115N, RANGE 41W. HE REPORTS ALL SECTION CORNERS FOUND. SET QUARTER CORNERS AT EQUAL DISTANCE. NO TIES WERE RECORDED.

MARCH 13, 2006- BENJAMIN C. O'MALLEY SEARCHED FOR ALL ORIGINAL GOVERNMENT MONUMENT EVIDENCE. NON WAS FOUND. SET A MAGNETIC NAIL AT EQUAL DISTANCE ON A STRAIGHT LINE BETWEEN THE NORTHWEST AND SOUTHWEST CORNERS OF SECTION 13. NEW TIES WHERE MADE.

Doc# 240197 Fee: \$.00 2 Pages

Office of County Recorder
Yellow Medicine County, Minnesota
I hereby certify that the within instrument
was filed on March 16, 2006 at 10:20 AM

Kay Zempel, Yellow Medicine County Recorder

BY Heidi Janke Jung Deputy

N/c O'Malley & Bove Land Surveyors, Inc.
328 SW 3rd St, Willmar 56201

CERTIFICATE OF LOCATION OF GOVERNMENT CORNER

.....SW.....Corner of Section...13.....Township...115 N...Range...41 W 5th P.M.

STATE OF MINNESOTA, County of...YELLOW MEDICINE

At the corner location shown on the sketch

On...3-14-06.....found a.....MAGNETIC NAIL.....

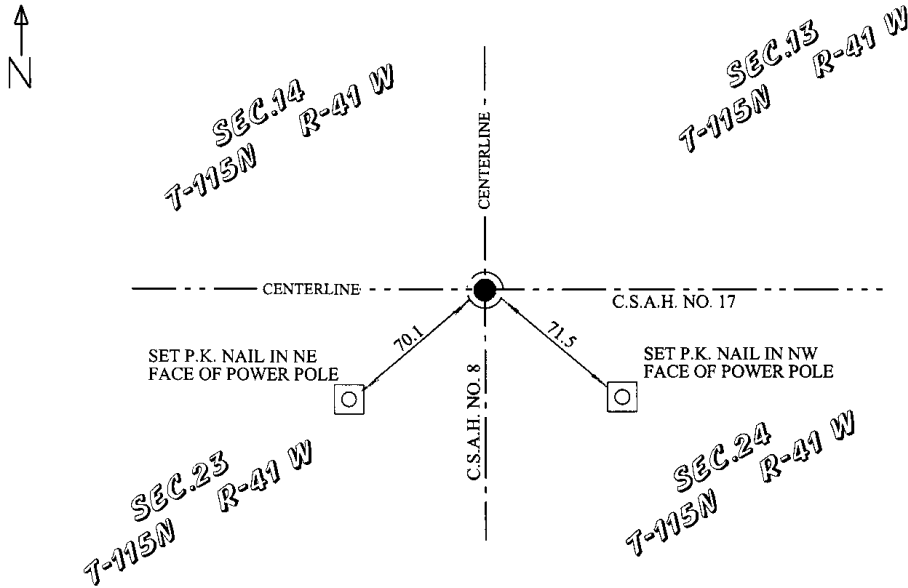
Date

left monument as found, lowered monument removed monument(explain)

On.....placed a.....

Date

SKETCH OF REFERENCE TIES



Statement of evidence relative to this corner location is on back of page.

I hereby certify that this document and the data contained herein was prepared by me or under my direct supervision.

[Signature] 3-16-06
Signature Date

Registration No.42300.....

Land Surveyor, County Surveyor,

Professional Engineer County Engineer.

OFFICE OF THE COUNTY RECORDER

County of

I hereby certify that this document was filed in the County Recorders office at.....M. on theday of.....A.D., 20....

County Recorder.....

By Deputy

DOCUMENT NO.

STATEMENT OF EVIDENCE:

SOUTHWEST CORNER OF SECTION 13, TOWNSHIP 115 N, RANGE 41 W, YELLOW MEDICINE COUNTY, MINNESOTA

JULY 1916 - H.L. WADELL MADE A RESURVEY OF SECTION 14, TOWNSHIP 115N, RANGE 41W. HE REPORTS ALL SECTION CORNERS FOUND. SET QUARTER CORNERS AT EQUAL DISTANCE. NO TIES WERE RECORDED.

MARCH 13, 2006- BENJAMIN C. O'MALLEY SEARCHED FOR ALL ORIGINAL GOVERNMENT MONUMENT EVIDENCE. NON WAS FOUND. FOUND A MAGNETIC NAIL AT THE INTERSECTION OF THE CENTERLINE OF C.S.A.H. NO. 8 AND THE CENTERLINE OF C.S.A.H. NO. 17. NEW TIES WHERE MADE.

Doc# 240196 Fee: \$.00 2 Pages

Office of County Recorder
Yellow Medicine County, Minnesota
I hereby certify that the within instrument
was filed on March 16, 2006 at 10:15 AM

Kay Zempel, Yellow Medicine County Recorder

BY Heidi J. Berkefeld Deputy

N/c O'Malley & Bae Land Surveyors, Inc
328-SW 3rd St., Willmar 56201

CERTIFICATE OF LOCATION OF GOVERNMENT CORNER

North $\frac{1}{4}$ Corner of Section 16, Township 115N, Range 41W, 5th P.M.

STATE OF MINNESOTA, County of Yellow Medicine

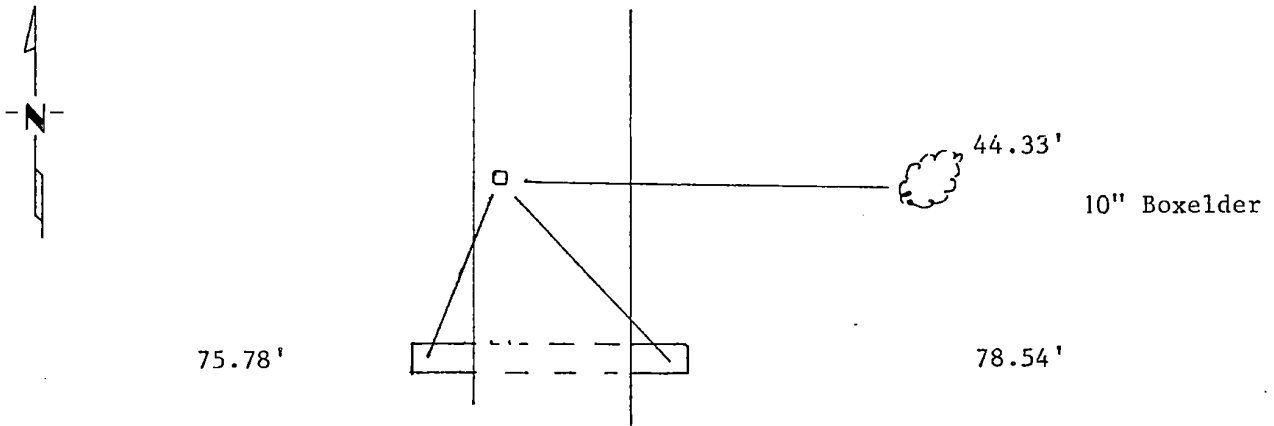
At the corner location shown on the sketch:

On 5/25/88 found a 12" X 36" Field Stone Pointed up
DATE

left monument as found, lowered monument, removed monument (explain)

On 5/25/88 placed a 1 1/2" Iron Pipe with a seal on top of it , on top
DATE of the field stone.

SKETCH OF REFERENCE TIES



Corner is 6' West of the Centerline of Township Road

Nail and Seal	10" Boxelder	NE	44.33'
PK Nail	Top of Corrugated-	SE	78.54'
Pk Nail	Metal Culvert	SW	75.78'

Statement of evidence relative to this corner location is on back of page.

I hereby certify that this document and the data contained herein was prepared by me or under my direct supervision.

Ray E. Meany 5/31/88
SIGNATURE DATE

Registration No. 111943

- Land Surveyor, Professional Engineer
 County Surveyor, County Engineer

OFFICE OF THE COUNTY RECORDER

County of Yellow Medicine

I hereby certify that this document was filed in the Co. Recorders office at 10:00 A.M. on the 25 day of January A.D., 1989

County Recorder Norman J. Opdahl

By Kay Nordahl, Deputy

DOCUMENT NO. 194565

Statement of Evidence:

On May 25, 1988 we dug with a backhoe and found a 12" X 36" field stone pointed up. We measured a recorded measure to the stone and it checked out right. We then placed a 1½" Iron Pipe on top of it flush with the road surface. The corner is 6' West of the centerline of the Township Road.

CERTIFICATE OF LOCATION OF GOVERNMENT CORNER

NORTH QUARTER Corner of Section 18, Township 115, Range 41, 5TH P.M.

STATE OF MINNESOTA, County of YELLOW MEDICINE

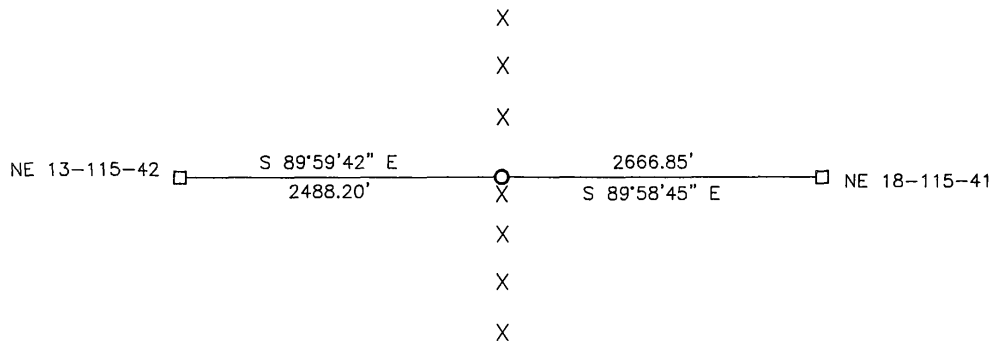
At the corner location shown on the sketch:

On 04-06-2017 found a 5/8" IRON WITH SEAL #11943.
DATE

left monument as found, lowered monument, removed monument (explain)

On _____ placed a _____
DATE

SKETCH OF REFERENCE TIES



Minnesota State Plane Coordinate
System Yellow Medicine County Datum
NAD83 (1996)

N: 185550.577
E: 515810.987

Statement of evidence relative to this corner location is on back of page.

I hereby certify that this document and the data contained herein was prepared by me or under my direct supervision.

[Signature] 2/26/18
SIGNATURE DATE

Registration No. 43844

- Land Surveyor, Professional Engineer
- County Surveyor, County Engineer

Doc# 268105 Fee: \$0.00 2 Pages

Property & Public Services
Property Records Division
Yellow Medicine County, Minnesota
I hereby certify that the within instrument
was filed on March 28, 2018 at 11:10 AM

Janel Timm, Yellow Medicine County Recorder

By [Signature] Deputy

Statement of Evidence

In 1864, Chas E. Davis and J.W. Webb, Jr. did the original subdivision of the township.

April 29, 1988, Moseng Land Surveying set a 5/8" iron with seal #11943 at the intersection of the fences.

On April 6, 2017, Bueltel-Moseng Land Surveying found a 5/8" iron with seal #11943 at the intersection of the fences.

Doc# 261836 Fee: \$0.00 2 Pages

Property & Public Services
Property Records Division
Yellow Medicine County, Minnesota
I hereby certify that the within instrument
was filed on April 16, 2015 at 10:10 AM

Janel Timm, Yellow Medicine County Recorder

By Kelley Kauger Deputy

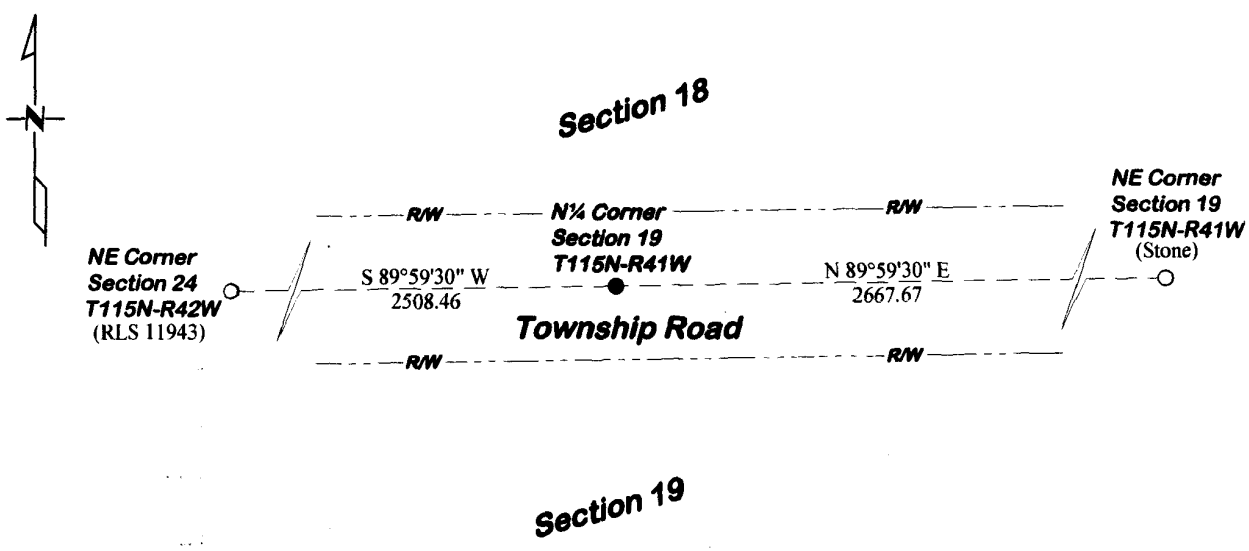
CERTIFICATE OF LOCATION OF GOVERNMENT CORNER

North Quarter Corner of Section 19, Township 115, Range 41

Fifth Principal Meridian, State of Minnesota, County of Yellow Medicine

At the corner location shown on the sketch:

- On 4/30/12 found a Nothing
DATE
- left monument as found lowered monument removed monument (explain)
- On 5/16/12 placed a Capped Iron Rod "46169 46171"
DATE



Statement of evidence for this corner location is on back of this page.

I hereby certify that this document was researched and prepared by me or under my direct supervision.

Signature *Matthew Clarke* Date 7/30/12 License No. 46171

Title: Land Surveyor Professional Engineer County Surveyor County Engineer

STATEMENT OF EVIDENCE

North Quarter Corner of Section 19 T115N-R41W

Sept. 1864

Chas E. Davis and J.W. Webb Jr. were contracted by the United States Government Land Office to perform the Original Public Land Survey in this township. They record in their field notes "set post in mound with pits for quarter section corner".

1901

John Norgaard, County Surveyor, records in Yellow Medicine County Surveyor's Record Book A page 76, "Located last year on line and at equal proportionate distances from Sec. Cor.", but does not note what type of monument was found at the corner position

May 16, 2012

Matthew D. Runke, P.L.S. #46171, set a Capped Iron Rod "46169 46171" at the corner position using single proration methods from dimensions shown on 1901 Norgaard survey. This position is supported by field evidence of tillage lines to the south of the corner position. No large excavation was done for this corner because it falls within the road Right of Way.

CERTIFICATE OF LOCATION OF GOVERNMENT CORNER

EAST QUARTER Corner of Section 19, Township 115 N, Range 41 W, 5th P.M.

STATE OF MINNESOTA, County of YELLOW MEDICINE

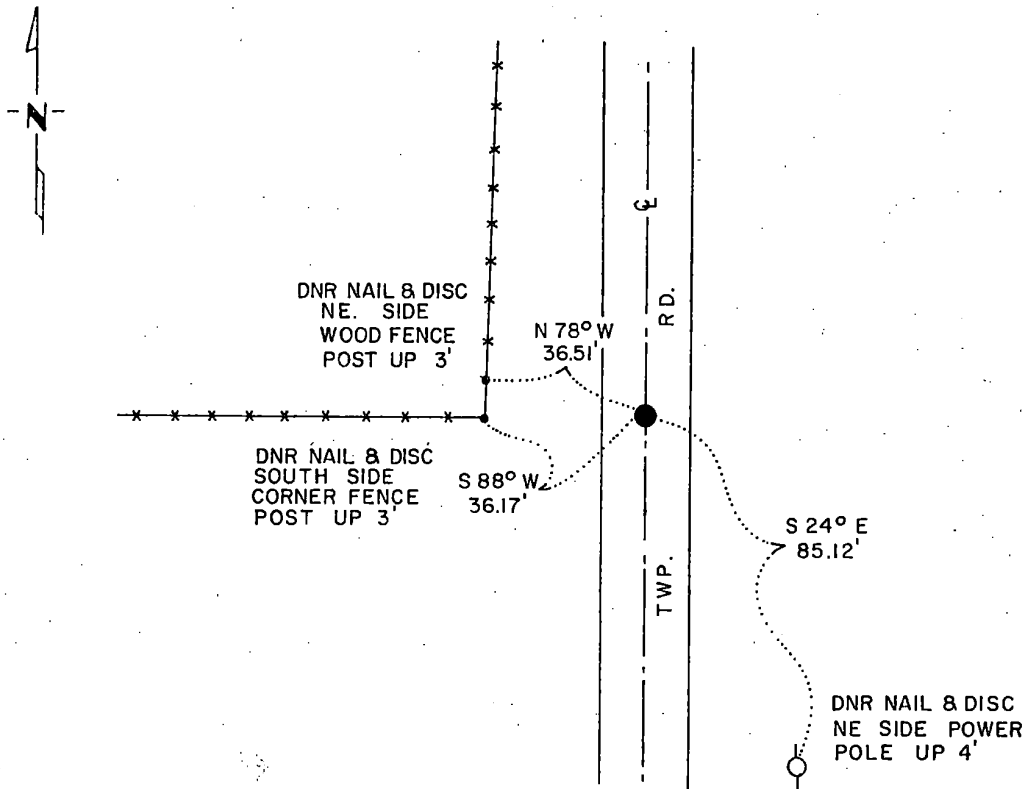
At the corner location shown on the sketch:

On 6-7-84 found a 1"x37" IRON ROD DOWN 17" WITH A DETERIORATED
DATE WOODEN STAKE BESIDE IRON ROD, DOWN 20"

left monument as found, lowered monument, removed monument (explain)

On 6-7-84 placed a 1 1/4"x1 1/4"x20" PERFORATED STEEL TUBE WITH
DATE ALUMINUM CAP STAMPED "DNR SURVEY MARKER", DOWN 0.3'

SKETCH OF REFERENCE TIES



BEARINGS OBSERVED WITH COMPASS

Statement of evidence relative to this corner location is on back of page.

G-835
6/22/84 J.A.G.

I hereby certify that this document and the data contained herein was prepared by me or under my direct supervision.

John D. Walker 11-8-84
SIGNATURE DATE

Registration No: 16098

Land Surveyor, Professional Engineer
 County Surveyor, County Engineer

OFFICE OF THE COUNTY RECORDER
County of Yellow Medicine

I hereby certify that this document was filed in the Co. Recorders office at 9:25 A.M. on the 15 day of November A.D., 19 84

County Recorder Norman S. Opdahl

By _____, Deputy

DOCUMENT NO. 185088

RECORDED
GRANTOR ✓
GRANTEE ✓
INDEXED

East Quarter Corner Section 19, Township 115 North, Range 41 West

This corner was originally established by the U. S. General Land Office survey in 1864. The government notes show corner marked with a wood post set in mound of earth with pits and trench dug around the mound.

In May 1984, the DNR Bureau of Engineering contacted the Yellow Medicine County Offices of the Recorder and Highway Engineer for corner information.

The following information was obtained from the County Recorder's Office:

Surveyor's Record Book, on Page 74, contains a survey made by Jonah Peterman, County Surveyor, in December 1889. Survey mentions that the government corner was found. Corner is shown 40.14 chains (2649.24 feet) from the southeast corner of Section 19, and stone is written by the corner.

Surveyor's Record Book, on Page 74, contains a survey made by John Norgaard, County Surveyor, in 1901. Survey states that Mr. Senovth planted willows 33 feet east of corner, when corner and stake were plain.

Surveyor's Record Book, on Page 76, contains a survey made by John Norgaard, County Surveyor, in 1901. Survey states that corner was established equal distance from section corners and 33 feet west of trees planted by Mr. Senovth. Survey does not mention what was set at corner. Corner is shown:

2653 feet from the northeast corner of Section 19
2653 feet from the southeast corner of Section 19

The following information was obtained from the D.N.R. Bureau of Engineering Records:

In December 1961, the corner was assumed at the intersection of the center line of a north-south road and a fence west. Survey does not mention what was set at corner. Corner is shown:

2650.4 feet from the northeast corner of Section 19
2657.7 feet from the southeast corner of Section 19

On June 5, 1984, the DNR Bureau of Engineering traversed to the area of the corner and located the intersection of the center line of a north-south road and a fence west.

On June 7, 1984, the D.N.R. Bureau of Engineering dug a hole, 2 feet east-west by 6 feet north-south the center being at the intersection of the center line of road and fence. A 1 inch by 37 inch iron rod was found down 17 inches at natural ground with a deteriorated wood stake beside it down 20 inches. The iron rod was found to be:

on the center line of the north-south road
in line with fence west
2657.54 feet from the northeast corner of Section 19
2657.02 feet from the southeast corner of Section 19

Accept the iron rod as the location of the original government corner, and reset it down 24 inches.

Traverse information is available from the DNR Bureau of Engineering.

CERTIFICATE OF LOCATION OF GOVERNMENT CORNER

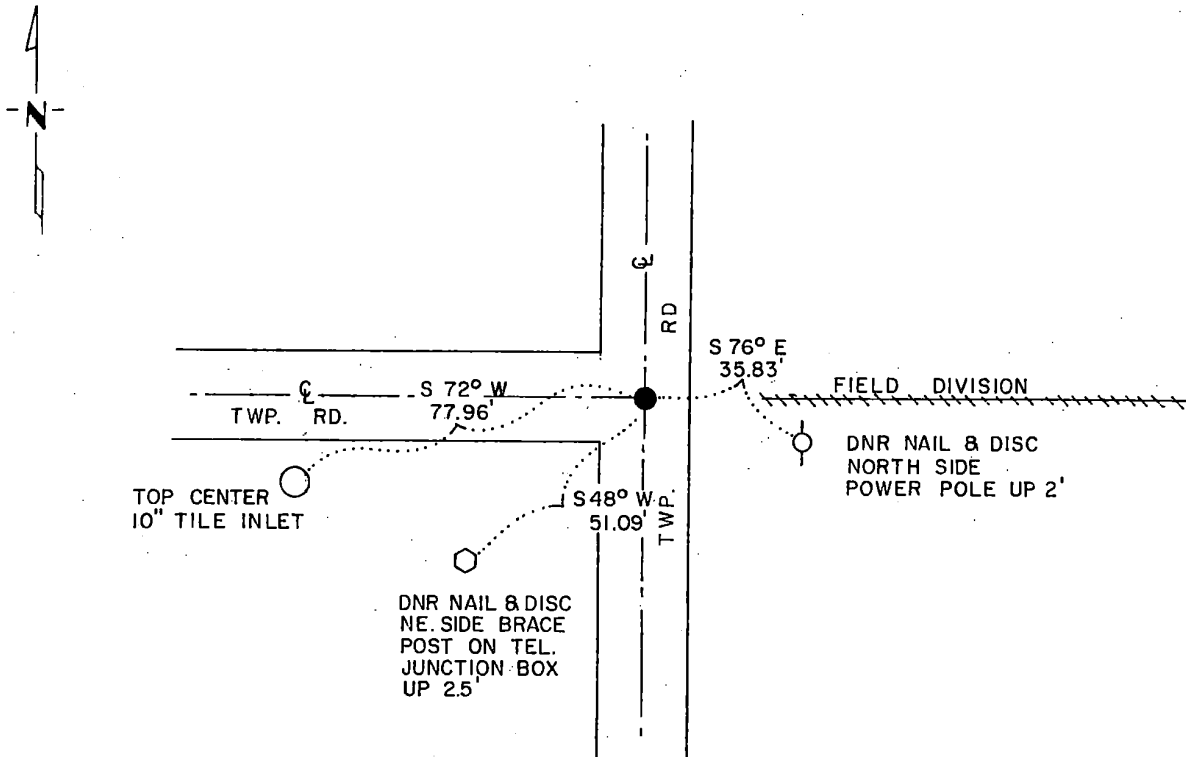
NORTHEAST Corner of Section 19, Township 115 N, Range 41 W, 5th P.M.

STATE OF MINNESOTA, County of YELLOW MEDICINE

At the corner location shown on the sketch:

- On 6/5/84 found a 6" x 6" GRANITE STONE, DOWN 0.3'
DATE
- left monument as found, lowered monument, removed monument (explain)
- On 6/5/84 placed a 1/2" x 10" IRON ROD ON WEST SIDE STONE, AND A
DATE 1/2" x 6" IRON ROD ON EAST SIDE STONE, DOWN 0.3'

SKETCH OF REFERENCE TIES



BEARINGS OBSERVED WITH COMPASS

Statement of evidence relative to this corner location is on back of page.

G-835

6/22/84 J.A.G.

I hereby certify that this document and the data contained herein was prepared by me or under my direct supervision.

John D. Walker 11-8-84
SIGNATURE DATE

Registration No. 16098

- Land Surveyor, Professional Engineer
- County Surveyor, County Engineer

OFFICE OF THE COUNTY RECORDER
County of Yellow Medicine

I hereby certify that this document was filed in the Co. Recorders office at 9:20 A. M. on the 15 day of November A.D., 19 84

County Recorder Normand Opdahl

By _____, Deputy

DOCUMENT NO. 185087

RECORDED
GRANTED
INDEXED

Northeast Corner Section 19, Township 115 North, Range 41 West

This corner was originally established by the U. S. General Land Office survey in 1864. The government notes show corner marked with a wood post set in mound of earth with pits and trench dug around the mound.

In May 1984, the DNR Bureau of Engineering contacted the Yellow Medicine County Offices of the Recorder and Highway Engineer for corner information.

The following information was obtained from the County Recorder's Office: Surveyor's Record Book, on Page 74, contains a survey made by Jonah Peterman, County Surveyor, in December 1889. Survey mentions that the government corner was found.

Surveyor's Record Book, on Page 76, contains a survey made by John Norgaard, County Surveyor, in 1901. Survey does not mention what was found or set at corner. Corner is shown:

2664 feet from the north quarter corner of Section 19

2653 feet from the east quarter corner of Section 19

Surveyor's Record Book B, on Page 93, contains a survey made by John Norgaard, County Surveyor, in 1901. Survey mentions that the location of corner, which has been used by several surveyors, was found to be in the center of a north-south road and in line with a fence east. A 6 inch by 6 inch by 24 inch jasper granite was set to mark this location.

The following information was obtained from the DNR Bureau of Engineering Records:

In December 1961, the corner was assumed at the intersection of roads north, south and west. Survey does not mention what was set at corner.

The following ties are shown to corner:

power pole, east, 35.7 feet

telephone pole, southwest, 42.8 feet

The following information was obtained from the County Highway Engineer's Office:

A section corner tie book, date not indicated, does not mention what was found or set at corner, but the following ties are shown:

telephone pole, northwest 76.1 feet

telephone pole, east-southeast, 170.1 feet

fence post, north-northwest, 73.8 feet

fence post, west-northwest, 79.4 feet

fence post, southwest, 69.0 feet

On June 5, 1984, the DNR Bureau of Engineering traversed to the area of the corner and found a 6 inch by 6 inch cut granite stone. Searched for but did not find any previous ties.

Accept the stone as the location of the original government corner.

Traverse information is available from the DNR Bureau of Engineering.

CERTIFICATE OF LOCATION OF GOVERNMENT CORNER

NORTH QUARTER Corner of Section 20, Township 115, Range 41, 5TH P.M.

STATE OF MINNESOTA, County of YELLOW MEDICINE

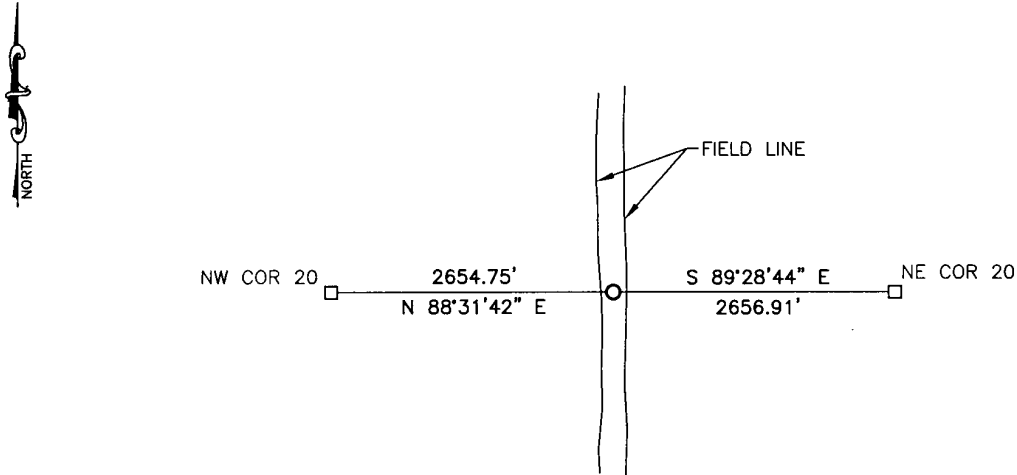
At the corner location shown on the sketch:

On _____ found a _____
DATE

left monument as found, lowered monument, removed monument (explain)

On 10/6/15 placed a 5/8" iron with seal #43844
DATE

SKETCH OF REFERENCE TIES



Minnesota State Plane Coordinate
System Yellow Medicine County Datum
NAD83 (1996)

NO TIES

N: 180260.009
E: 521129.718

Statement of evidence relative to this corner location is on back of page.

I hereby certify that this document and the data contained herein was prepared by me or under my direct supervision.

[Signature] 3/2/16
SIGNATURE DATE

Registration No. 43844

Land Surveyor, Professional Engineer
 County Surveyor, County Engineer

OFFICE OF THE COUNTY RECORDER

County of _____

I hereby certify that this document was filed in the Co. Recorders office at _____ .M on the _____ day of _____ A.D. 20 _____

County Recorder _____

By _____, Deputy

DOCUMENT NO. _____

Statement of Evidence

In September, 1864, Chas. E. Davis and J.W. Webb Jr. did the original subdivision of the township.

In 1984, John D. Walker, County Surveyor, found a corner fence post at the corner. He set a DNR monument on the east side of the fence post and 6'± west of field line.

(No Date), Marihart Surveying found a monument at the corner.

On October 6, 2015, Bueltel-Moseng Land Surveying set a 5/8" iron with seal #43844 by using the information from the Minnesota DNR.

Doc# 263821 Fee: \$0.00 2 Pages

Property & Public Services
Property Records Division
Yellow Medicine County, Minnesota
I hereby certify that the within instrument
was filed on March 28, 2016 at 12:10 PM

Janel Timm, Yellow Medicine County Recorder

By Debra Blood Deputy

CERTIFICATE OF LOCATION OF GOVERNMENT CORNER

NORTHEAST Corner of Section 20, Township 115 N., Range 41 W., 5th P.M.

STATE OF MINNESOTA, County of YELLOW MEDICINE

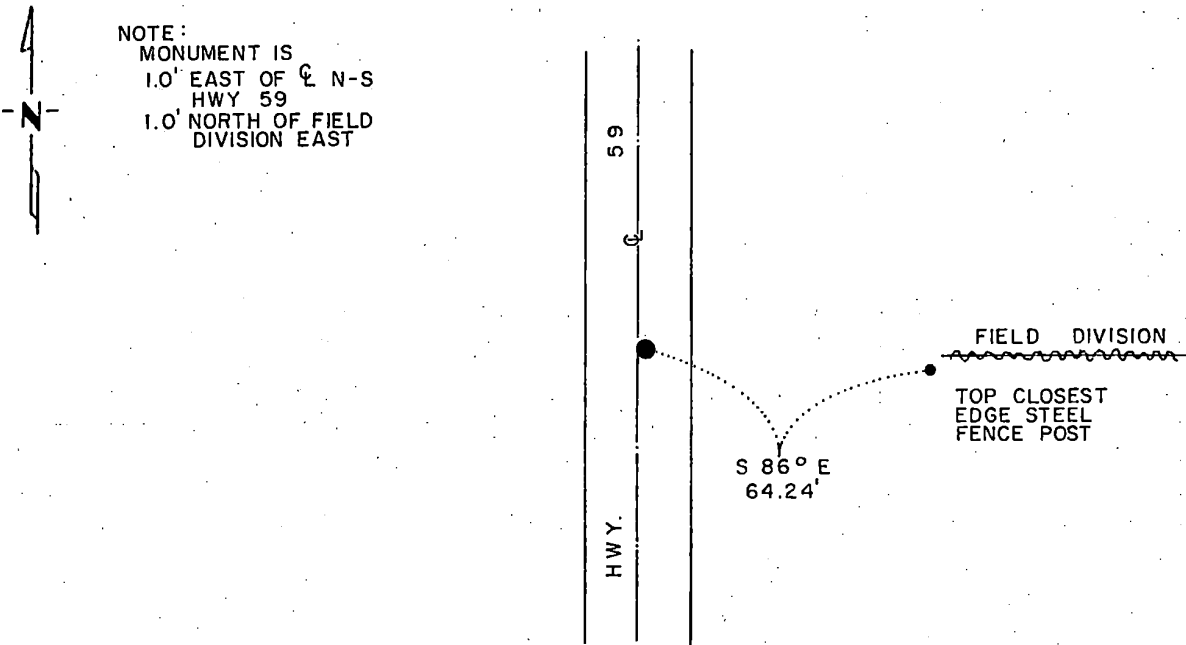
At the corner location shown on the sketch:

On _____ found a _____
DATE

left monument as found, lowered monument, removed monument (explain)

On 9-25-84 placed a 1 1/4" x 1 1/4" x 20" PERFORATED STEEL TUBE WITH
DATE ALUMINUM CAP STAMPED "DNR SURVEY MARKER", FLUSH

SKETCH OF REFERENCE TIES



BEARING OBSERVED WITH COMPASS

Statement of evidence relative to this corner location is on back of page.

J.A.G 10-2-84
G-835

I hereby certify that this document and the data contained herein was prepared by me or under my direct supervision.

John D. Walker 11-8-84
SIGNATURE DATE

Registration No. 16098

Land Surveyor, Professional Engineer

County Surveyor, County Engineer

OFFICE OF THE COUNTY RECORDER
County of Yellow Medicine

I hereby certify that this document was filed in the Co. Recorders office at 9:40 A. M. on the 15 day of November A.D., 19 84

County Recorder Norman Opdahl

By _____, Deputy

DOCUMENT NO. 185091

RECORDED
GRANTOR ✓
GRANTEE ✓
INDEXED

Northeast Corner Section 20, Township 115 North, Range 41 West

This corner was originally established by the U. S. General Land Office survey in 1864. The government notes show corner marked with a wood post set in mound of earth with pits and trench dug around the mound.

In May 1984, the DNR Bureau of Engineering contacted the Yellow Medicine County Offices of the Recorder and Highway Engineer for corner information.

The following information was obtained from the County Recorder's Office:
Surveyor's Record Book, on Page 74, contains a survey made by Jonah Peterman, County Surveyor, in December, 1889. Survey mentions that the government corner was found. Stone is written by the corner.

Surveyor's Record Book B, on Page 93, contains a survey made by John Norgaard, County Surveyor, in 1901. Survey mentions that a stake was found in the government mound, and a 6 inch by 6 inch by 24 inch jasper granite was set to mark this location.

Surveyor's Record Book B, on Page 453 contains a list of ties to government corners, date and surveyor not indicated. No information is given as to what was found or set at corner, but the following tie is shown:

corner post 50 feet east on section line

The following information was obtained from the DNR Bureau of Engineering Records:

In December 1961, the corner was established per a right-of-way map for U. S. Highway 59. Survey does not indicate what was set at corner.

In April 1984, the DNR Bureau of Engineering received the following information from the Minnesota Department of Transportation Office in St. Paul:

A right-of-way map for U. S. Highway 59, date not indicated, shows a stone in place at corner, 1.3 feet north of P.I. station 477+73.4.

On May 31, 1984, the DNR Bureau of Engineering traversed to the area of the corner and found a 3/4 inch iron rod at P.I. station 477+73.4, also located other stations along the center line.

On June 7, 1984, the D.N.R. Bureau of Engineering dug a hole, 2.5 feet east-west by 5.0 feet north-south the center being 1.3 feet north of P.I. station 477+73.4. At a depth of 30 inches an old road bed was encountered. Dug to a depth of 60 inches and then probed entire hole, but found nothing. Reset 3/4 inch iron rod at P.I. as found.

Accept the position per U. S. Highway 59 right-of-way map as the location of corner.

Traverse information is available from the DNR Bureau of Engineering.

CERTIFICATE OF LOCATION OF GOVERNMENT CORNER

NORTH QUARTER Corner of Section 20, Township 115 N., Range 41 W., 5th P.M.

STATE OF MINNESOTA, County of YELLOW MEDICINE

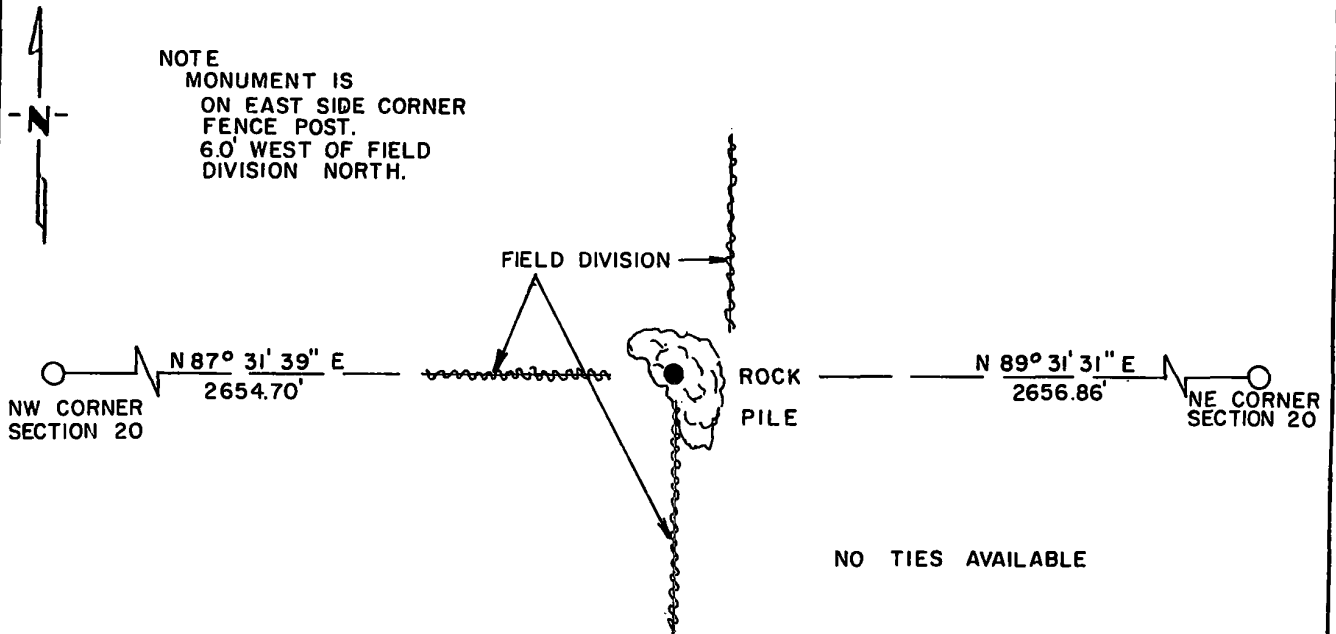
At the corner location shown on the sketch:

On 6-5-84 found a CORNER FENCE POST
DATE

left monument as found, lowered monument, removed monument (explain)

On 9-26-84 placed a 1 1/4" x 1 1/4" x 20" PERFORATED STEEL TUBE WITH
DATE ALUMINUM CAP STAMPED "DNR SURVEY MARKER", FLUSH

SKETCH OF REFERENCE TIES



BEARINGS ASSUMED

Statement of evidence relative to this corner location is on back of page.

J.A.G. 10-2-84
G-835

I hereby certify that this document and the data contained herein was prepared by me or under my direct supervision.

John D. Walker 11-8-84
SIGNATURE DATE

Registration No. 16098

Land Surveyor, Professional Engineer
 County Surveyor, County Engineer

OFFICE OF THE COUNTY RECORDER
County of Yellow Medicine

I hereby certify that this document was filed in the Co. Recorders office at 9:35 A.M. on the 15 day of November A.D., 19 84

County Recorder Norman J. Opden

By _____, Deputy

DOCUMENT NO. 185090

RECORDED
GRANTOR
GRANTEE
INDEXED

North Quarter Corner Section 20, Township 115 North, Range 41 West

This corner was originally established by the U. S. General Land Office survey in 1864. The government notes show corner marked with a wood post set in mound of earth with pits and trench dug around the mound.

In May 1984, the DNR Bureau of Engineering contacted the Yellow Medicine County Offices of the Recorder and Highway Engineer for corner information.

The following information was obtained from the County Recorder's Office: Surveyor's Record Book, on Page 74, contains a survey made by Jonah Peterman, County Surveyor, in December 1889. Survey mentions that the government corner was found. Corner is shown 40.34 chains (2662.44 feet) from the northeast corner of Section 20. Survey also shows a distance of 79.86 chains (5270.76 feet) GLO measurement, between the northeast and northwest corners of Section 20.

The following information was obtained from the D.N.R. Bureau of Engineering Records:

In December 1961, a distance of 5312.4 feet was measured between the northeast and northwest corners of Section 20. Survey does not mention what was found or set at corner. Survey states that the north line of Section 20 is not a straight line. An occupation line in the area of corner is shown 2658.5 feet from the northeast corner of Section 20.

On June 5, 1984, the DNR Bureau of Engineering traversed to the area of the corner and found a corner fence post (no fences around it) in a large rock pile, in line with field divisions west and south and 6 feet west of a field division north. Measured 2656.86 feet from the fence post to the northeast corner of Section 20 and 5310.75 feet between the northeast and northwest corners of Section 20. Fence post was found to be 46.26 feet north and 2.27 feet west of the lost position using GLO distances. A 1955 air photo shows a bend at this corner.

Accept the corner fence post as the location of the original government corner.

Traverse information is available from the DNR Bureau of Engineering.

CERTIFICATE OF LOCATION OF GOVERNMENT CORNER

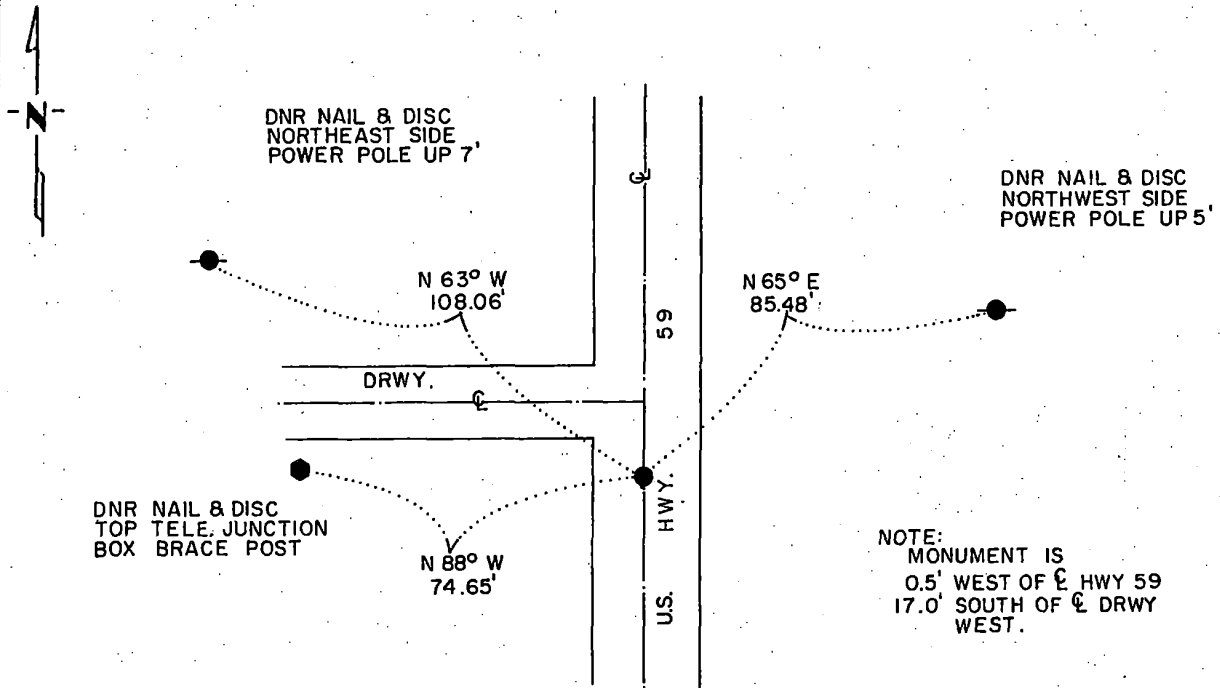
EAST QUARTER Corner of Section 20, Township 115 N., Range 41 W., 5th P.M.

STATE OF MINNESOTA, County of YELLOW MEDICINE

At the corner location shown on the sketch:

- On _____ found a _____
DATE
- left monument as found, lowered monument, removed monument (explain)
- On 9-25-84 placed a 1 1/4" x 1 1/4" x 20" PERFORATED STEEL TUBE WITH
DATE ALUMINUM CAP STAMPED "DNR SURVEY MARKER", FLUSH

SKETCH OF REFERENCE TIES



NOTE:
 MONUMENT IS
 0.5' WEST OF ϵ HWY 59
 17.0' SOUTH OF ϵ DRWY
 WEST.

BEARINGS OBSERVED WITH COMPASS

Statement of evidence relative to this corner location is on back of page.

J.A.G. 10-2-84
 G-835

I hereby certify that this document and the data contained herein was prepared by me or under my direct supervision.

John D. Walker 11-8-84
SIGNATURE DATE

Registration No. 16098
 Land Surveyor, Professional Engineer
 County Surveyor, County Engineer

OFFICE OF THE COUNTY RECORDER
 County of Yellow Medicine

I hereby certify that this document was filed in the Co. Recorders office at 9:30 A.M. on the 15 day of November A.D., 19 84

County Recorder Norman Spolansky

By _____, Deputy

DOCUMENT NO. 185089

RECORDED
 GRANTOR ✓
 GRANTEE ✓
 INDEXED

East Quarter Corner Section 20, Township 115 North, Range 41 West

This corner was originally established by the U. S. General Land Office survey in 1864. The government notes show corner marked with a wood post set in mound of earth with pits and trench dug around the mound.

In May 1984, the DNR Bureau of Engineering contacted the Yellow Medicine County Offices of the Recorder and Highway Engineer for corner information.

The following information was obtained from the County Recorder's Office: Surveyor's Record Book, on Page 74, contains a survey made by Jonah Peterman, County Surveyor, in December 1889. Survey mentions that the government corner was found. Stone is written by the corner. Survey also shows a stone at the sixteenth corner north of corner, but no distance is shown to it.

The following information was obtained from the D.N.R. Bureau of Engineering Records:

In December 1961, this corner was established on line between the northeast and southeast corners of Section 20 and 2656.0 feet from the northeast corner. The distance of 2656.0 feet was double the distance from the northeast corner of Section 20 to a crop line west at the east sixteenth corner of the northeast quarter. This procedure left a distance of 2755.80 feet from corner to the southeast corner of Section 20. Survey does not indicate what was set to mark this location.

In April 1984, the DNR Bureau of Engineering received the following information from the Minnesota Department of Transportation Office in St. Paul:

A right-of-way map of U. S. Highway 59, date not indicated, shows the corner at station 451+05, which is on the center line of highway and in line with a fence west. Map does not indicate what was found or set at corner.

Computations per highway stationing, the corner is:
2669.7 feet from the northeast corner of Section 20
2742.6 feet from the southeast corner of Section 20

On May 31, 1984, the DNR Bureau of Engineering traversed to the area of the corner and located center line stationing along U. S. Highway 59. Then a corner position was computed per Highway information. This position was found to be:

2670.38 feet from the northeast corner of Section 20
2741.42 feet from the southeast corner of Section 20
35.52 feet north and 0.26 of a foot west of the last position.

Did not search for a stone at this location because area is in a cut section of road.

Accept the corner position per U. S. Highway 59 right-of-way map as the location of corner.

Traverse information is available from the DNR Bureau of Engineering.

CERTIFICATE OF LOCATION OF GOVERNMENT CORNER

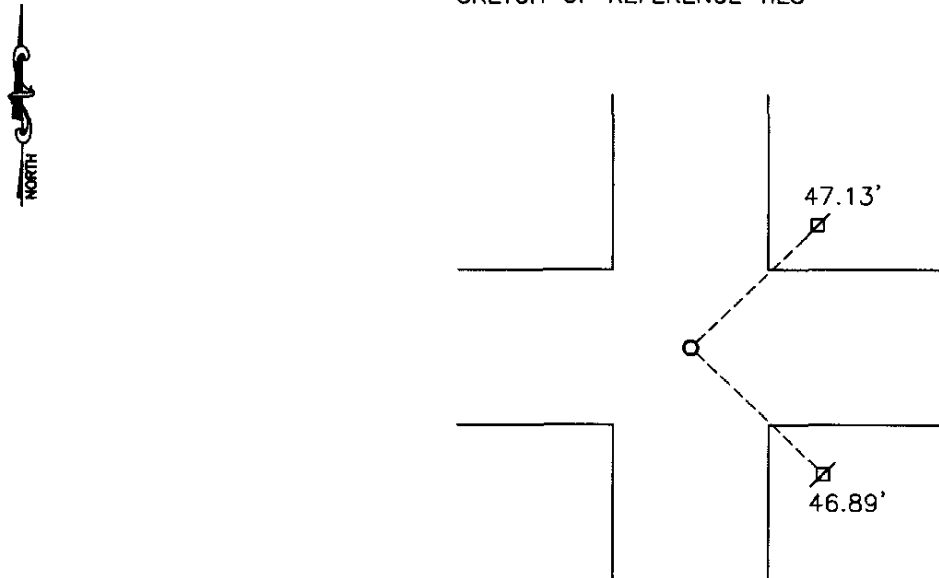
NORTHEAST Corner of Section 21, Township 115, Range 41, 5TH P.M.

STATE OF MINNESOTA, County of YELLOW MEDICINE

At the corner location shown on the sketch:

- On 10-26-2007 found a TWISTED IRON ROD
DATE
- left monument as found, lowered monument, removed monument (explain)
- On _____ placed a _____
DATE

SKETCH OF REFERENCE TIES



Minnesota State Plane Coordinate
System Yellow Medicine County Datum
NAD83 (1996)

N: 180161.004
E: 529082.676

Nail and bottle cap in power pole NE 47.13'
Nail and seal in power pole SE 46.89'

Statement of evidence relative to this corner location is on back of page.

I hereby certify that this document and the data contained herein was prepared by me or under my direct supervision.

Samuel Buehler Feb. 20, 2008
SIGNATURE DATE

Registration No. 43844

- Land Surveyor, Professional Engineer
- County Surveyor, County Engineer

OFFICE OF THE COUNTY RECORDER

County of _____

I hereby certify that this document was filed in the Co. Recorders office at _____ .M on the _____ day of _____ A.D. 20 _____

County Recorder _____

By _____, Deputy

DOCUMENT NO. _____

Statement of Evidence

In 1864, Chas E. Davis and J.W. Webb, Jr., did the original subdivision of the township.

In 1940, the Yellow Medicine Highway Department located a monument at the corner.

On October 5, 1977, the Yellow Medicine Highway Department found a monument and tied it out.

On October 26, 2007, Bueltel-Moseng Land Surveying found a twisted iron rod at the corner. It was very close to the ties from 1977, and we accepted it as the corner.

N/C Bueltel-Moseng Land Surveying
PO Box 32
Marshall MN 56258

Doc# 245316 Fee: \$0.00 2 Pages

Office of County Recorder
Yellow Medicine County, Minnesota
I hereby certify that the within instrument
was filed on April 8, 2008 at 10:55 AM

Kay Zempel, Yellow Medicine County Recorder

By Debra Blood Deputy

CERTIFICATE OF LOCATION OF GOVERNMENT CORNER

EAST QUARTER Corner of Section 21, Township 115, Range 41, 5TH P.M.

STATE OF MINNESOTA, County of YELLOW MEDICINE

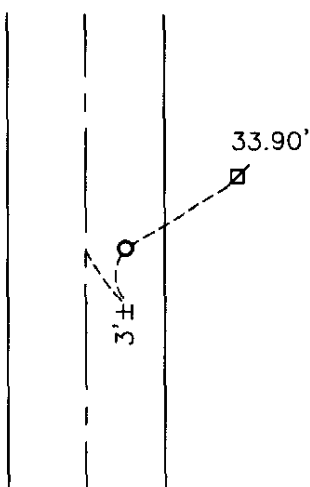
At the corner location shown on the sketch:

On 10-26-2007 found a POINTED FIELD STONE
DATE

left monument as found, lowered monument, removed monument (explain)

On 10-26-2007 placed a 5/8" IRON WITH SEAL #43844 ON EAST SIDE OF STONE.
DATE

SKETCH OF REFERENCE TIES



Minnesota State Plane Coordinate
System Yellow Medicine County Datum
NAD83 (1996)

N: 177528.787
E: 529005.624

Statement of evidence relative to this corner location is on back of page.

I hereby certify that this document and the data contained herein was prepared by me or under my direct supervision.

Samuel Bue Feb. 20, 2008
SIGNATURE DATE

Registration No. 43844

Land Surveyor, Professional Engineer
 County Surveyor, County Engineer

OFFICE OF THE COUNTY RECORDER

County of _____

I hereby certify that this document was filed in the Co. Recorders office at _____ .M on the _____ day of _____ A.D. 20 _____

County Recorder _____

By _____, Deputy

DOCUMENT NO. _____

Statement of Evidence

In 1864, Chas E. Davis and J.W. Webb, Jr., did the original subdivision of the township.

On October 5, 1977, the Yellow Medicine Highway Department recorded a large pointed field stone and ties to it.

On October 26, 2007, Bueltel-Moseng Land Surveying found the large pointed field stone using previous ties. We set a $\frac{3}{8}$ " iron with seal #43844 along the east side of the stone.

N/C Bueltel-Moseng Land Surveying
PO Box 32
Marshall MN 56258

Doc# 245315 Fee: \$0.00 2 Pages
Office of County Recorder
Yellow Medicine County, Minnesota
I hereby certify that the within instrument
was filed on April 8, 2008 at 10:50 AM

Kay Zempel, Yellow Medicine County Recorder
By Debra Blood Deputy

CERTIFICATE OF LOCATION OF GOVERNMENT CORNER

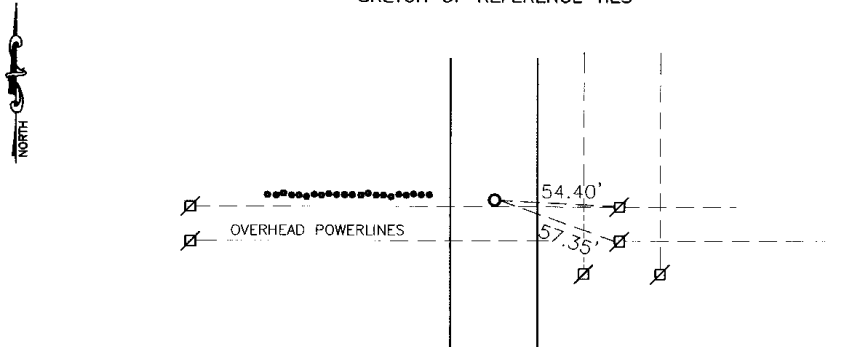
EAST QUARTER Corner of Section 25, Township 115, Range 41, 5th P.M.

STATE OF MINNESOTA, County of YELLOW MEDICINE

At the corner location shown on the sketch:

- On _____ found a _____
DATE
- left monument as found, lowered monument, removed monument (explain)
- On 6-20-2005 placed a 1" PIPE WITH SEAL
DATE

SKETCH OF REFERENCE TIES



Nail and Seal in Power Pole ESE 54.40'
 Nail and Seal in Power Pole SE 57.35'

Statement of evidence relative to this corner location is on back of page.

I hereby certify that this document and the data contained herein was prepared by me or under my direct supervision.

Ayle C. Moring 12-16-05
 SIGNATURE DATE

Registration No. 11943

- Land Surveyor, Professional Engineer
- County Surveyor, County Engineer

OFFICE OF THE COUNTY RECORDER

County of _____

I hereby certify that this document was filed in the Co. Recorders office at _____ M on the _____ day of _____ A.D. 20 _____

County Recorder _____

By _____, Deputy

DOCUMENT NO. _____

Statement of Evidence

On June 20, 2005 Bucltel-Moseng Land Surveying dug with a backhoe (Jeseritz Construction) and were unable to find marker. Trying to set a marker midway and on line with section corners it fell 50' North of existing line and 6' East of the center line of the road. A 1" pipe with seal was set by occupational lines and centerline of road. The aerial photographs were scaled and showed it also to be 40-50' south of midway.

n/c Lyle Moseng
783 Lawrence St
Marshall MN
56258

Doc# 239632 Fee: \$0.00 2 Pages

Office of County Recorder
Yellow Medicine County, Minnesota
I hereby certify that the within instrument
was filed on December 20, 2005 at 10:15 AM

Kay Zempel, Yellow Medicine County Recorder

BY Kay Zempel Recorder

CERTIFICATE OF LOCATION OF GOVERNMENT CORNER

EAST QUARTER Corner of Section 27, Township 115, Range 41, 5TH P.M.

STATE OF MINNESOTA, County of YELLOW MEDICINE

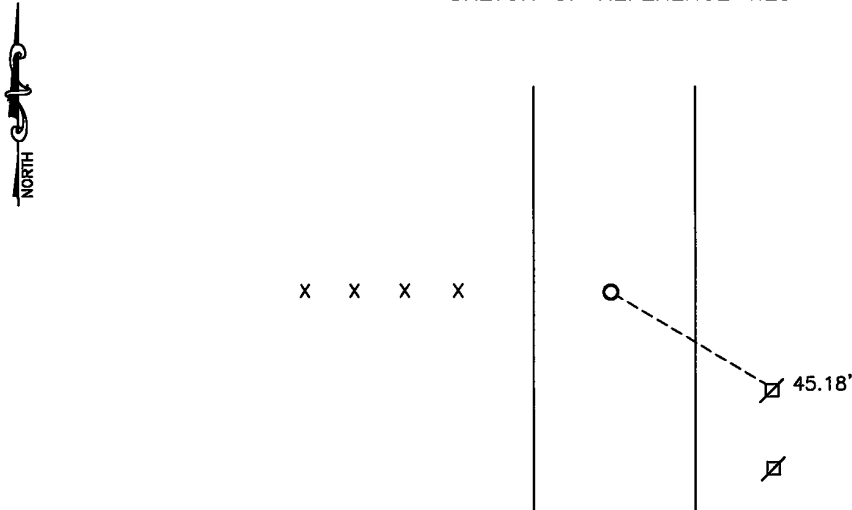
At the corner location shown on the sketch:

On 9/19/14 found a 1.5" pipe
DATE

left monument as found, lowered monument, removed monument (explain)

On 9/19/14 placed a 5/8" iron w/seal #43844
DATE

SKETCH OF REFERENCE TIES



Minnesota State Plane Coordinate
 System Yellow Medicine County Datum
 NAD83 (1996)
 N: 172197.972
 E: 534388.241

Nail and survey marker in utility pole SSE 45.18'

Statement of evidence relative to this corner location is on back of page.

I hereby certify that this document and the data contained herein was prepared by me or under my direct supervision.

[Signature] 9/20/2023
SIGNATURE DATE

Registration No. 43844

- Land Surveyor, Professional Engineer
- County Surveyor, County Engineer

Doc# 280946 Fee: \$0.00 2 Pages

Property & Public Services
 Property Records Division
 Yellow Medicine County, Minnesota
 I hereby certify that the within instrument was filed on September 20, 2023 at 10:15 AM

Janel Timm, Yellow Medicine County Recorder

By Marit Nordang Deputy

Statement of Evidence

In 1864, Chas. E. Davis and J.W. Webb Jr. did the original subdivision of the township.

On September 19, 2014, Bueltel-Moseng Land Surveying dug with a backhoe and found 1.5" pipe 3'± below the road surface. We set 5/8" iron with seal #43844 at the road surface.

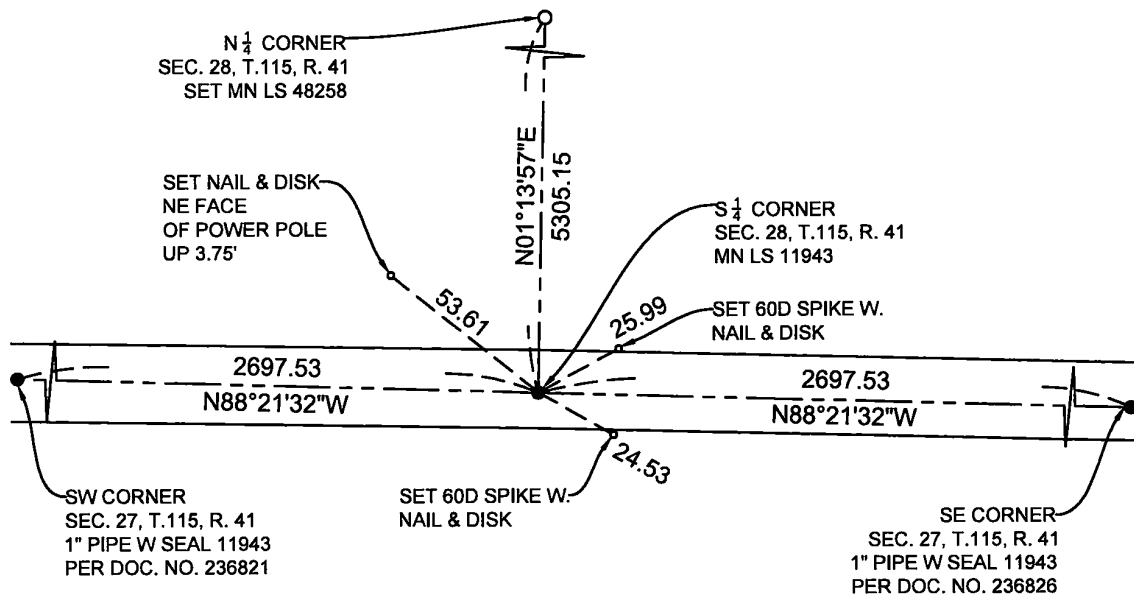
CERTIFICATE OF LOCATION OF GOVERNMENT CORNER

SOUTH QUARTER Corner of Section 27, Township 115 N., Range 41 W., 5th P.M.
STATE OF MINNESOTA, County of YELLOW MEDICINE.

At the corner location shown on the sketch:

- On 7-19-2023 found a A 1" PIPE MARKED WITH LS 11943
date
DOWN 0.30' BELOW GRADE ON THE CL OF TOWNSHIP ROAD
 left monument as found, lowered monument, removed monument (explain)
- On _____ placed a _____
date

SKETCH OF REFERENCE TIES



Minnesota State Plane Coordinate System
 South Zone, US Feet, Grid Scale 1.0
 NAD83 (2011)
 N = 964609.51
 E = 2162653.97

NOT TO SCALE

Statement of evidence relative to this corner location is on back of this page.

I hereby certify that this document and the data contained herein was prepared by me or under my direct supervision.

[Signature]
 SIGNATURE

9-5-2023
 DATE

Registration No. 48258

- Land Surveyor Professional Engineer
 County Surveyor County Engineer

Doc# 280883 Fee: \$0.00 2 Pages

Property & Public Services
 Property Records Division
 Yellow Medicine County, Minnesota
 I hereby certify that the within instrument was filed on September 11, 2023 at 1:05 PM

Janel Timm, Yellow Medicine County Recorder

By Marit Nordang Deputy

STATEMENT OF EVIDENCE

S $\frac{1}{4}$ 27-115-41

KLJ contacted the following for survey information

MN GLO/BLM original survey records
Yellow Medicine County Recorder's Office
MNDOT office in Willmar
Yellow Medicine County Highway Engineer's Office
Bonnema Surveys, Inc. of Willmar
O'Malley & Kron Land Surveyors, Inc. of Willmar
Bueltel-Moseng Land Surveying of Marshall
Marihart Surveying, P.A. of Dawson
Egan Field & Nowak, Inc of New Brighton
E.G. Rud & Sons, Inc. of Hutchinson

In September, 1858, C.E. DAVIS & J.W. WEBB JR., General Land Office Deputy Surveyors performing the original survey of the subdivision lines set a wood post, in mound with pits.

In April, 1918 County Surveyor John Norgaard's "Red Book", page 401, on file at the Yellow Medicine County Recorder's Office shows distances of 2697.5 feet East and 2697.5 feet West to each Section corner. The notes state that he set a stone on line and equal distances between section corners.

In November, 2003 Lyle Moseng filed a Certificate of Survey at the Yellow Medicine County Recorders Office in the SW $\frac{1}{4}$ of Section 34 said Township. These are stored in a file as courtesy copies, and are not recorded. They are available for viewing and copies can be made upon request. The Certificate of Survey shows that Lyle set a 1" pipe with seal #11943 for this corner and shows the distance 2697.56' West & 2697.56 East. The basis of bearing/coordinate system is not listed. The corner position is a straight line single proportion.

On July, 19, 2023, KLJ found a 1" pipe with seal #11943. KLJ found no evidence of the original corner or other corner monuments. KLJ accepted the corner position which falls on the centerline of the township road and field division north and south. Monument was 0.30' below grade.

CERTIFICATE OF LOCATION OF GOVERNMENT CORNER

NORTH QUARTER Corner of Section 27, Township 115 N., Range 41 W., 5th P.M.
STATE OF MINNESOTA, County of YELLOW MEDICINE.

At the corner location shown on the sketch:

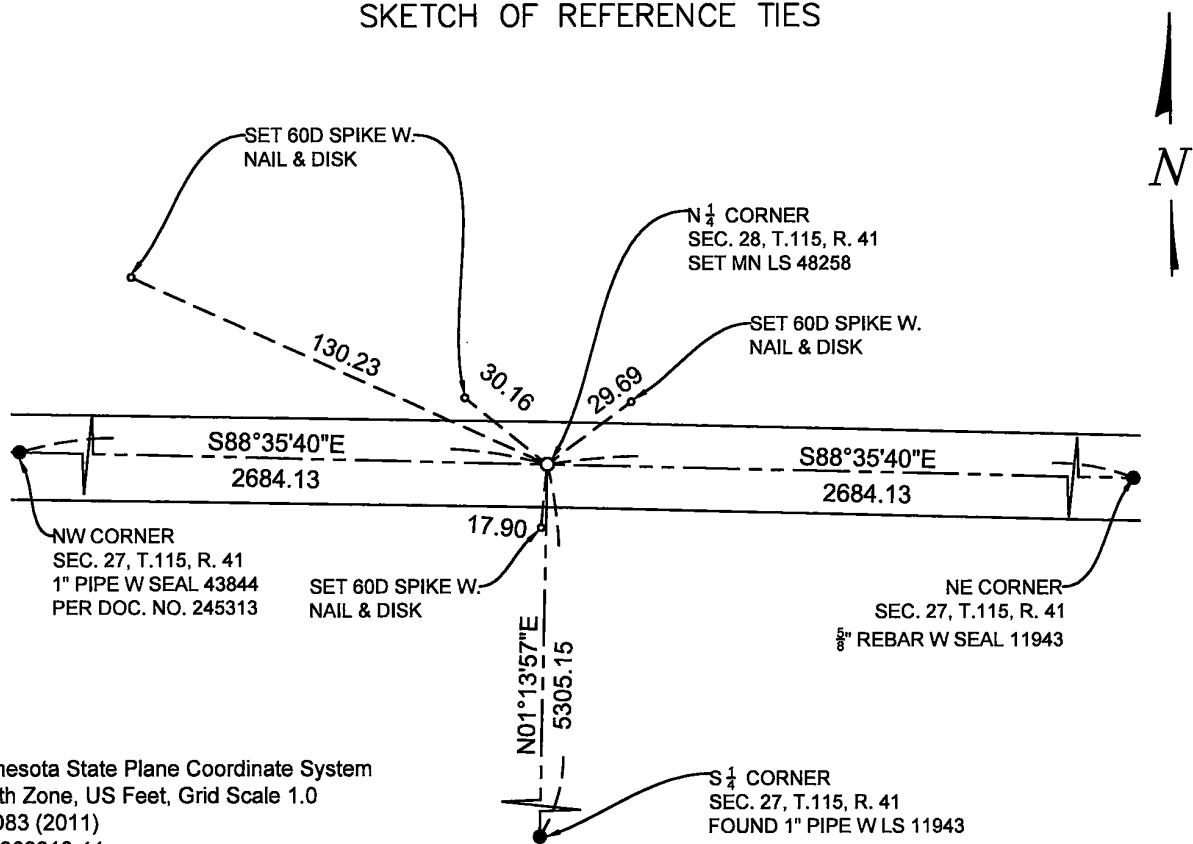
On _____ found a _____
date

left monument as found, lowered monument, removed monument (explain)

On 7-19-2023 placed a 5/8 INCH BY 18" LONG REBAR WITH CAP MARKED
date

MN LS 48258 AT THE LOCATION SHOWN BELOW.

SKETCH OF REFERENCE TIES




Minnesota State Plane Coordinate System
South Zone, US Feet, Grid Scale 1.0
NAD83 (2011)
N = 969913.44
E = 2162768.06

NOT TO SCALE

Statement of evidence relative to this corner location is on back of this page.

I hereby certify that this document and the data contained herein was prepared by me or under my direct supervision.


SIGNATURE

9-5-2023
DATE

Registration No. 48258

- Land Surveyor Professional Engineer
 County Surveyor County Engineer

Doc# 280882 Fee: \$0.00 2 Pages

Property & Public Services
Property Records Division
Yellow Medicine County, Minnesota
I hereby certify that the within instrument was filed on September 11, 2023 at 1:00 PM

Janel Timm, Yellow Medicine County Recorder

By Marit Nordang Deputy

STATEMENT OF EVIDENCE

N $\frac{1}{4}$ 27-115-41

KLJ contacted the following for survey information

MN GLO/BLM original survey records
Yellow Medicine County Recorder's Office
MNDOT office in Willmar
Yellow Medicine County Highway Engineer's Office
Bonnema Surveys, Inc. of Willmar
O'Malley & Kron Land Surveyors, Inc. of Willmar
Bueltel-Moseng Land Surveying of Marshall
Marihart Surveying, P.A. of Dawson
Egan Field & Nowak, Inc of New Brighton
E.G. Rud & Sons, Inc. of Hutchinson

In September, 1858, C.E. DAVIS & J.W. WEBB JR., General Land Office Deputy Surveyors performing the original survey of the subdivision lines set a wood post, in mound with pits.

Date not shown, County Surveyor "Brown Book", page 15, on file at the Yellow Medicine County Recorder's Office shows distances of 5361 feet across the north line of the Section, no display of any monuments shown or noted.

In April, 1918 County Surveyor John Norgaard's "Red Book", page 401, on file at the Yellow Medicine County Recorder's Office shows distances of 2682 feet East and 2682 feet West to each Section corner. The notes state that he set a stake on line and equal distances between section corners.

On July, 19, 2023, KLJ found a 60d spike down 0.50 below grade on the centerline of the road, the spike was lifted and no other magnetic draws were present. KLJ then dug a 3x3x3 hole with a large electric jackhammer and generator at the spikes location which was midpoint and online between section corners east and west and probed and found nothing. KLJ found no evidence of the original corner or other corner monuments. KLJ established the location at the straight line single proportion which falls on the centerline of the township road and field division south. Monument set 0.50' below grade.

STATEMENT OF EVIDENCE

E $\frac{1}{4}$ 28-115-41

KLJ contacted the following for survey information

MN GLO/BLM original survey records
Yellow Medicine County Recorder's Office
MNDOT office in Willmar
Yellow Medicine County Highway Engineer's Office
Bonnema Surveys, Inc. of Willmar
O'Malley & Kron Land Surveyors, Inc. of Willmar
Bueltel-Moseng Land Surveying of Marshall
Marihart Surveying, P.A. of Dawson
Egan Field & Nowak, Inc of New Brighton
E.G. Rud & Sons, Inc. of Hutchinson

In September, 1858, C.E. DAVIS & J.W. WEBB JR., General Land Office Deputy Surveyors performing the original survey of the subdivision lines set a wood post, in mound with pits.

In April, 1918 County Surveyor John Norgaard's "Red Book", page 401, on file at the Yellow Medicine County Recorder's Office shows distances of 2646.5 feet North and 2646.5 feet South to each Section corner. The notes state that he set a stone on line and equal distances between section corners.

On July, 19, 2023, KLJ dug a 3x3x3 hole with a large electric jackhammer and generator at the midpoint and online between section corners north and south and probed and found nothing. Another 3x3x3 hole was dug at the center of the road and field division east 10' south of said midpoint and probed and found nothing. KLJ found no evidence of the original corner or other corner monuments. KLJ established the location at the straight line single proportion which falls on the centerline of the township road and 10' north of the field division east. Monument set 0.50' below grade.

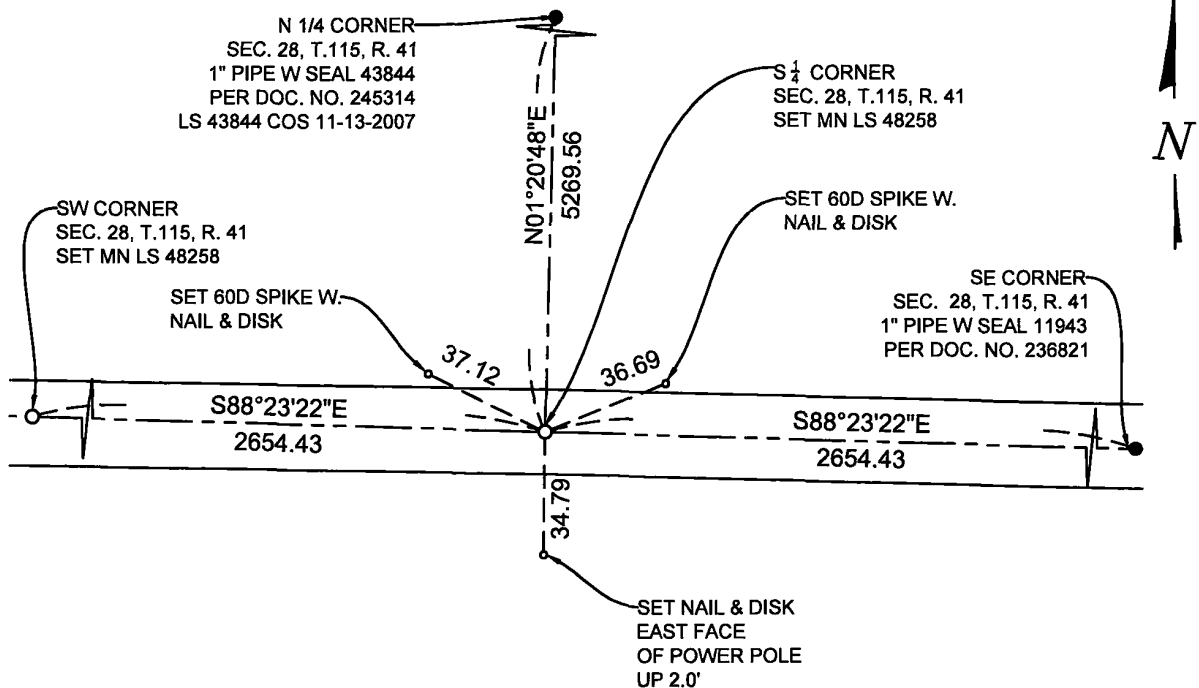
CERTIFICATE OF LOCATION OF GOVERNMENT CORNER

SOUTH QUARTER Corner of Section 28, Township 115 N., Range 41 W., 5th P.M.
STATE OF MINNESOTA, County of YELLOW MEDICINE.

At the corner location shown on the sketch:

- On _____ date found a _____
- left monument as found, lowered monument, removed monument (explain)
- On 7-19-2023 date placed a 5/8 INCH BY 18" LONG REBAR WITH CAP MARKED
MN LS 48258 AT THE LOCATION SHOWN BELOW.

SKETCH OF REFERENCE TIES



Minnesota State Plane Coordinate System
South Zone, US Feet, Grid Scale 1.0
NAD83 (2011)
N = 964761.36
E = 2157304.15

NOT TO SCALE

Statement of evidence relative to this corner location is on back of this page.

I hereby certify that this document and the data contained herein was prepared by me or under my direct supervision.


SIGNATURE

9-5-2023
DATE

Registration No. 48258

- Land Surveyor Professional Engineer
 County Surveyor County Engineer

Doc# 280880 Fee: \$0.00 2 Pages

Property & Public Services
Property Records Division
Yellow Medicine County, Minnesota
I hereby certify that the within instrument was filed on September 11, 2023 at 12:50 PM

Janel Timm, Yellow Medicine County Recorder

By Marit Nordang Deputy

STATEMENT OF EVIDENCE

S $\frac{1}{4}$ 28-115-41

KLJ contacted the following for survey information

MN GLO/BLM original survey records
Yellow Medicine County Recorder's Office
MNDOT office in Willmar
Yellow Medicine County Highway Engineer's Office
Bonnema Surveys, Inc. of Willmar
O'Malley & Kron Land Surveyors, Inc. of Willmar
Bueltel-Moseng Land Surveying of Marshall
Marihart Surveying, P.A. of Dawson
Egan Field & Nowak, Inc of New Brighton
E.G. Rud & Sons, Inc. of Hutchinson

In September, 1858, C.E. DAVIS & J.W. WEBB JR., General Land Office Deputy Surveyors performing the original survey of the subdivision lines set a wood post, in mound with pits.

On July, 19, 2023, KLJ dug a 3x3x3 hole with a large electric jackhammer and generator at the midpoint and online between section corners east and west and probed and found nothing. KLJ found no evidence of the original corner or other corner monuments. KLJ established the location at the straight line single proportion which falls on the centerline of the township road and field division south. Monument set 0.50' below grade.

CERTIFICATE OF LOCATION OF GOVERNMENT CORNER

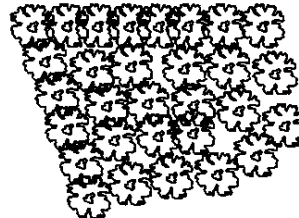
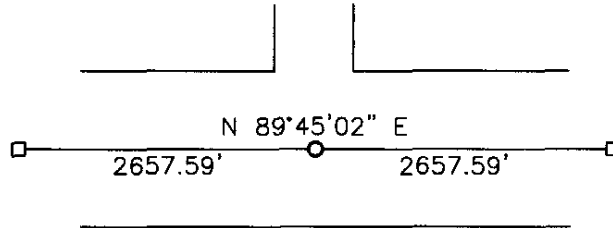
NORTH QUARTER Corner of Section 28, Township 115, Range 41, 5TH P.M.

STATE OF MINNESOTA, County of YELLOW MEDICINE

At the corner location shown on the sketch:

- On _____ found a _____
DATE
- left monument as found, lowered monument, removed monument (explain)
- On 11-07-2007 placed a 1" IRON PIPE WITH SEAL #43844
DATE

SKETCH OF REFERENCE TIES



Minnesota State Plane Coordinate
System Yellow Medicine County Datum
NAD83 (1996)

N: 174836.341
E: 526350.478

Statement of evidence relative to this corner location is on back of page.

I hereby certify that this document and the data contained herein was prepared by me or under my direct supervision.

David B. Smith Feb. 20, 2008
SIGNATURE DATE

Registration No. 43844

- Land Surveyor, Professional Engineer
- County Surveyor, County Engineer

OFFICE OF THE COUNTY RECORDER

County of _____

I hereby certify that this document was filed in the Co. Recorders office at _____ .M on the _____ day of _____ A.D. 20 _____

County Recorder _____

By _____, Deputy

DOCUMENT NO. _____

Statement of Evidence

In 1864, Chas E. Davis and J. W. Webb, Jr., did the original subdivision of the township.

On November 7, 2007, Bueltel-Moseng Land Surveying dug with a backhoe and found nothing. We set a 1" iron pipe with seal #43844 midway and on line between the section corners.

N/C Bueltel-Moseng Land Surveying
PO Box 32
Marshall MN 56258

Doc# 245314 Fee: \$0.00 2 Pages

Office of County Recorder
Yellow Medicine County, Minnesota
I hereby certify that the within instrument
was filed on April 8, 2008 at 10:45 AM

Kay Zempel, Yellow Medicine County Recorder

By  Deputy

CERTIFICATE OF LOCATION OF GOVERNMENT CORNER

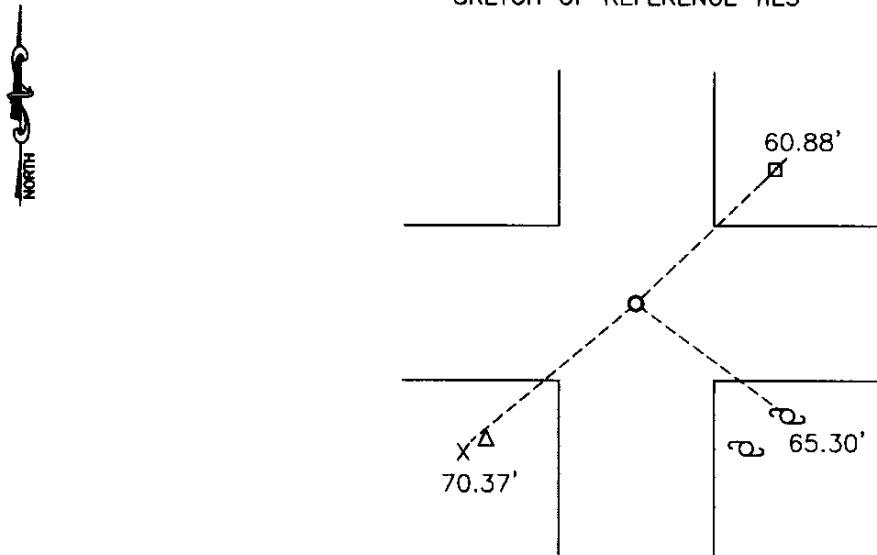
NORTHEAST Corner of Section 28, Township 115, Range 41, 5TH P.M.

STATE OF MINNESOTA, County of YELLOW MEDICINE

At the corner location shown on the sketch:

- On 11-07-2007 found a 10" FIELD STONE OVER A 6"X6" GRANITE MONUMENT
DATE
- left monument as found, lowered monument, removed monument (explain)
- On 11-07-2007 placed a 1" IRON PIPE WITH SEAL #43844
DATE

SKETCH OF REFERENCE TIES



Minnesota State Plane Coordinate
System Yellow Medicine County Datum
NAD83 (1996)

N: 174847.911
E: 529008.052

Nail and bottle cap in power pole NE 60.88'
Nail and seal in pedestal guard post SW 70.37'
Top center of NE'rly water valve SE 65.30'

Statement of evidence relative to this corner location is on back of page.

I hereby certify that this document and the data contained herein was prepared by me or under my direct supervision.

[Signature] Feb. 20, 2008
SIGNATURE DATE

Registration No. 43844

- Land Surveyor, Professional Engineer
- County Surveyor, County Engineer

OFFICE OF THE COUNTY RECORDER
County of _____

I hereby certify that this document was filed in the Co. Recorders office at _____ .M on the _____ day of _____ A.D. 20 _____

County Recorder _____

By _____, Deputy

DOCUMENT NO. _____

Statement of Evidence

In 1864, Chas E. Davis and J.W. Webb, Jr., did the original subdivision of the township.

On November 7, 2007, Bueltel-Moseng Land Surveying dug with a backhoe and found a 10" field stone over a 6"x6" granite monument. We placed a $\frac{3}{8}$ " iron with seal #43844 along the south side of the granite monument. We also placed a 1" iron pipe with seal #43844 at the road surface.

Doc# 245313 Fee: \$0.00 2 Pages

Office of County Recorder
Yellow Medicine County, Minnesota
I hereby certify that the within instrument
was filed on April 8, 2008 at 10:40 AM

N/C Bueltel-Moseng Land Surveying
PO Box 32
Marshall MN 56258

Kay Zempel, Yellow Medicine County Recorder

By Debra J. Zempel Deputy

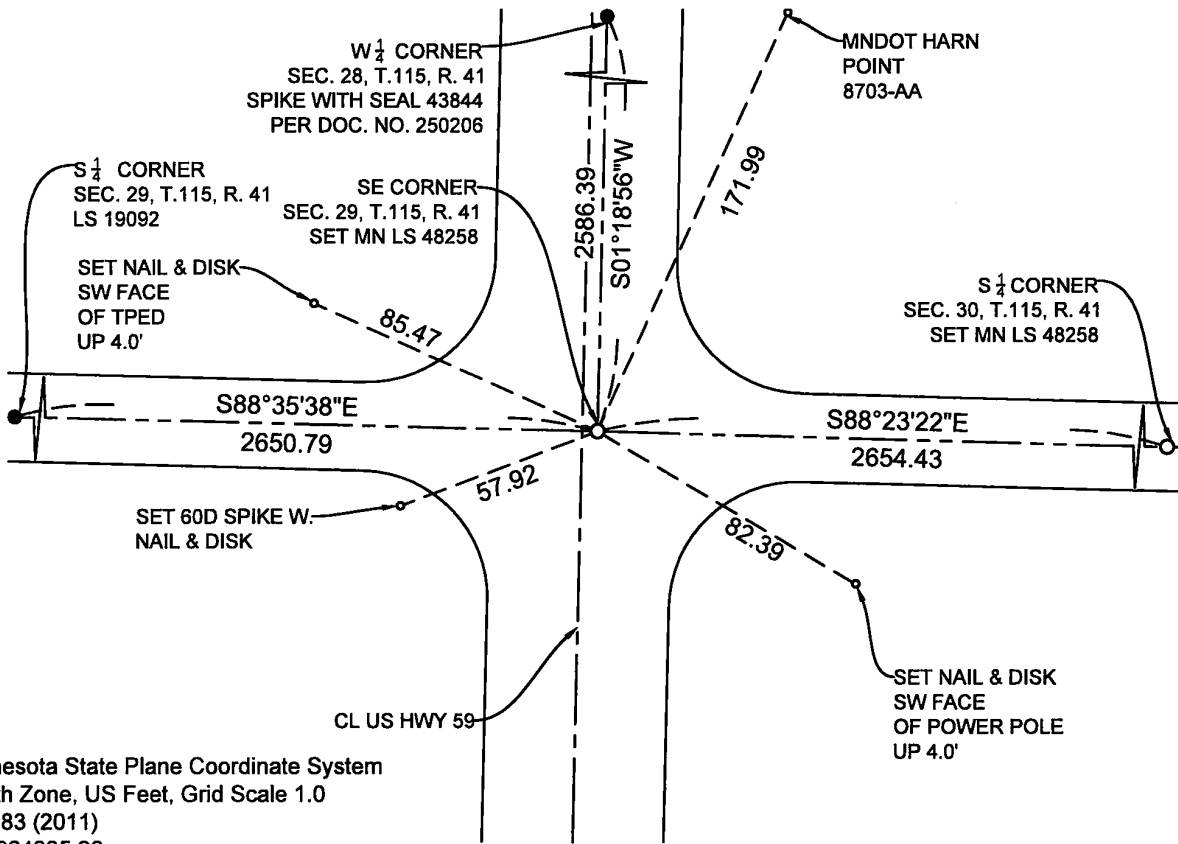
CERTIFICATE OF LOCATION OF GOVERNMENT CORNER

SOUTHEAST Corner of Section 29, Township 115 N., Range 41 W., 5th P.M.
STATE OF MINNESOTA, County of YELLOW MEDICINE.

At the corner location shown on the sketch:

- On 6-7-2023 found a PK NAIL FLUSH IN BITUMINOUS US HIGHWAY
date
NUMBER 59
- left monument as found, lowered monument, removed monument (explain)
- On 6-7-2023 placed a 5/8 INCH BY 18" LONG REBAR WITH CAP MARKED
date
MN LS 48258 LOCATED 4.0' EAST OF THE CENTERLINE OF US HWY 59.

SKETCH OF REFERENCE TIES



Minnesota State Plane Coordinate System
South Zone, US Feet, Grid Scale 1.0
NAD83 (2011)
N = 964835.96
E = 2154650.77

NOT TO SCALE

Statement of evidence relative to this corner location is on back of this page.

I hereby certify that this document and the data contained herein was prepared by me or under my direct supervision.

Janel Timm
SIGNATURE

9-5-2023
DATE

Registration No. 48258

- Land Surveyor Professional Engineer
- County Surveyor County Engineer

Doc# 280879 Fee: \$0.00 2 Pages
Property & Public Services
Property Records Division
Yellow Medicine County, Minnesota
I hereby certify that the within instrument was filed on September 11, 2023 at 12:45 PM

Janel Timm, Yellow Medicine County Recorder

By *Marit Nordang* Deputy

STATEMENT OF EVIDENCE

SE 29-115-41

KLJ contacted the following for survey information

MN GLO/BLM original survey records
Yellow Medicine County Recorder's Office
MNDOT office in Willmar
Yellow Medicine County Highway Engineer's Office
Bonnema Surveys, Inc. of Willmar
O'Malley & Kron Land Surveyors, Inc. of Willmar
Bueltel-Moseng Land Surveying of Marshall
Marihart Surveying, P.A. of Dawson
Egan Field & Nowak, Inc of New Brighton
E.G. Rud & Sons, Inc. of Hutchinson

In September, 1858, C.E. DAVIS & J.W. WEBB JR., General Land Office Deputy Surveyors performing the original survey of the subdivision lines set a wood post, in mound with pits.

Date Not Shown, County Surveyor name no shown "Red Book", page 453, on file at the Yellow Medicine County Recorder's notes Tel. Pol. SW 30' & fence post se 37' both are gone. There is no indication of a monument found or set. All ties are gone.

Date Not Shown, County Highway Engineer's Office shows ties of 36.0 T.P. SW & 34.9 COR FP. NW. There is no indication of a monument found or set. All ties are gone.

Date not shown, MNDOT RW map 13-42, indicates that the corner is 4.0' right (stationing runs south to north) of the P.O.T. station 371+13.8. No indication of the monument type is shown.

In April, 2007, Roy Marihart MN LS 19092 filed a Certificate of Survey at the Yellow Medicine County Recorders Office in the SE $\frac{1}{4}$ of said Section 29. These are stored in a file as courtesy copies, and are not recorded. They are available for viewing and copies can be made upon request. The Certificate of Survey shows that Roy found this corner and the distance 2651.18' West likely in Yellow Medicine County ground distances with a bearing break.

In August, 2009, Dan Bueltel, MN LS 43844 filed a Certificate of Survey at the Yellow Medicine County Recorders Office in the E $\frac{1}{2}$ of said Section 29. These are stored in a file as courtesy copies, and are not recorded. They are available for viewing and copies can be made upon request. The Certificate of Survey shows that Dan found and used this corner and shows a distance of 2651.20' West by doubling the distance from the 1/16th corner and 2586.82' North which matches the MNDOT RW map 13-42 distances by stationing well.

In December, 2013, Roy Marihart MN LS 19092 filed a Certificate of Survey at the Yellow Medicine County Recorders Office in the NW $\frac{1}{4}$ of Section 32 said Township. These are stored in a file as courtesy copies, and are not recorded. They are available for viewing and copies can be made upon request. The Certificate of Survey shows that Roy found this corner and the distance 2651.18' West likely in Yellow Medicine County ground distances with a bearing break.

On June 7, 2023, KLJ dug and found a PK nail flush in the bituminous and accepted the monument as the Southeast corner This falls 4.00' east of the centerline of US highway number 59. The PK nail was lifted and no other draws were present. The PK nail was removed and a $\frac{3}{8}$ " x 18" rebar with MN LS 48258 was set 0.30 below grade.

On June 20, 2023, KLJ contacted Roy Marihart, MN LS 19092 and he stated that he is retired and he is not going to file corner certificates on any of his Section corner monuments.

STATEMENT OF EVIDENCE

S $\frac{1}{4}$ 29-115-41

KLJ contacted the following for survey information

MN GLO/BLM original survey records
Yellow Medicine County Recorder's Office
MNDOT office in Willmar
Yellow Medicine County Highway Engineer's Office
Bonnema Surveys, Inc. of Willmar
O'Malley & Kron Land Surveyors, Inc. of Willmar
Bueltel-Moseng Land Surveying of Marshall
Marihart Surveying, P.A. of Dawson
Egan Field & Nowak, Inc of New Brighton
E.G. Rud & Sons, Inc. of Hutchinson

In September, 1858, C.E. DAVIS & J.W. WEBB JR., General Land Office Deputy Surveyors performing the original survey of the subdivision lines set a wood post, in mound with pits.

In April, 2007, Roy Marihart MN LS 19092 filed a Certificate of Survey at the Yellow Medicine County Recorders Office in the SE $\frac{1}{4}$ of said Section 29. These are stored in a file as courtesy copies, and are not recorded. They are available for viewing and copies can be made upon request. The Certificate of Survey shows that Roy found this corner and the distance 2651.18' West & 2651.18 East likely in Yellow Medicine County ground distances with a bearing break.

In August, 2009, Dan Bueltel, MN LS 43844 filed a Certificate of Survey at the Yellow Medicine County Recorders Office in the E $\frac{1}{2}$ of said Section 29. These are stored in a file as courtesy copies, and are not recorded. They are available for viewing and copies can be made upon request. The Certificate of Survey shows that Dan found and used this corner, but has no distance to it. Extending the line from the East & North pass through the monument

In December, 2013, Roy Marihart MN LS 19092 filed a Certificate of Survey at the Yellow Medicine County Recorders Office in the NW $\frac{1}{4}$ of Section 32 said Township. These are stored in a file as courtesy copies, and are not recorded. They are available for viewing and copies can be made upon request. The Certificate of Survey shows that Roy found this corner and the distance 2651.18' West & 2651.18 East likely in Yellow Medicine County ground distances with a bearing break.

On June 7, 2023, KLJ dug and found a $\frac{1}{2}$ " rebar capped iron monument set by Roy Marihart, MN LS 19092, and accepted the monument as the Southwest corner. This falls on centerline of the township road. The monument had a faint draw and was found by retracing the irons in the Certificate of Survey.

On June 20, 2023, KLJ contacted Roy Marihart, MN LS 19092 and he stated that he is retired and he is not going to file corner certificates on any of his Section corner monuments.

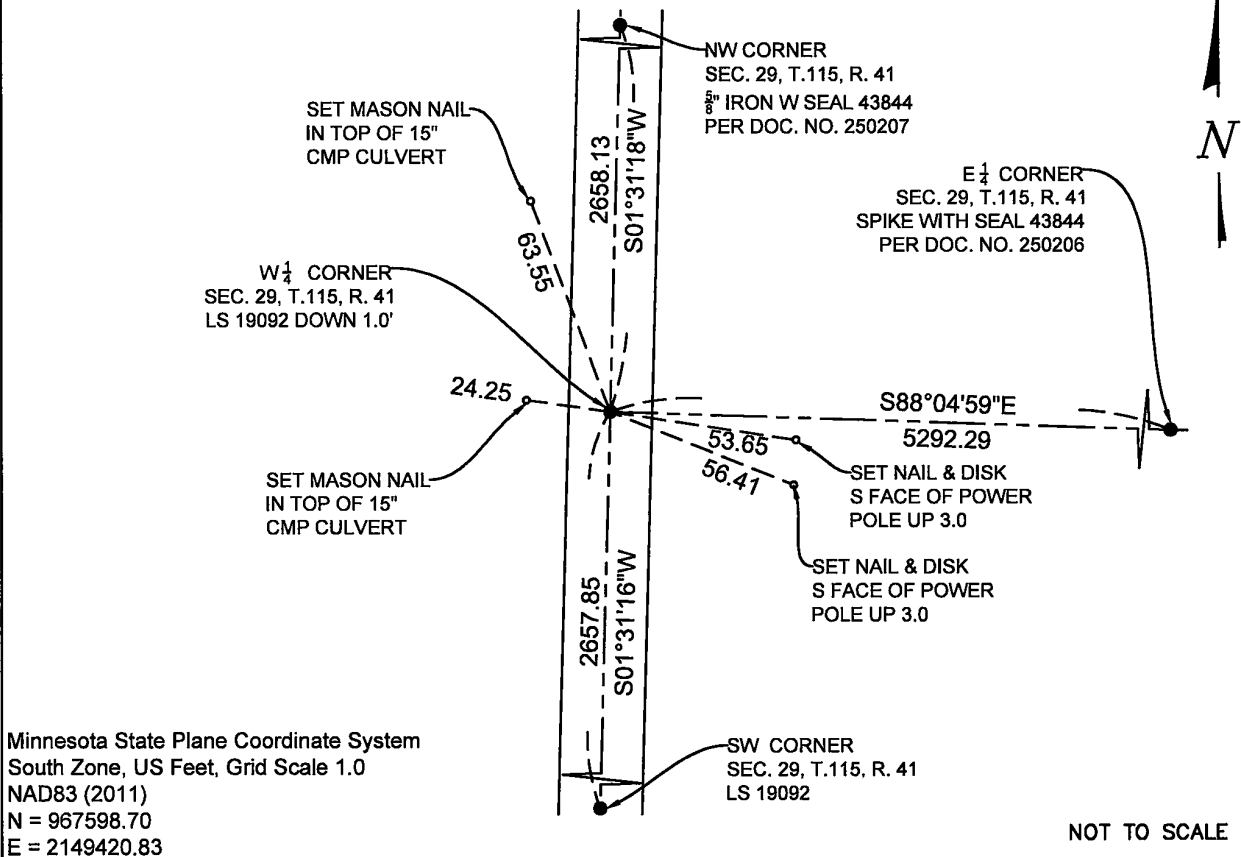
CERTIFICATE OF LOCATION OF GOVERNMENT CORNER

WEST QUARTER Corner of Section 29, Township 115 N., Range 41 W., 5th P.M.
STATE OF MINNESOTA, County of YELLOW MEDICINE.

At the corner location shown on the sketch:

- On 6-7-2023 found a YELLOW CAP MARKED WITH LS 19092
date
DOWN 1.00' BELOW GRADE ON THE CL OF TOWNSHIP ROAD
- left monument as found, lowered monument, removed monument (explain)
- On _____ placed a _____
date

SKETCH OF REFERENCE TIES



Statement of evidence relative to this corner location is on back of this page.

I hereby certify that this document and the data contained herein was prepared by me or under my direct supervision.

[Signature]
 SIGNATURE

9-5-2023
 DATE

Registration No. 48258

- Land Surveyor Professional Engineer
 County Surveyor County Engineer

Doc# 280877 Fee: \$0.00 2 Pages

Property & Public Services
 Property Records Division
 Yellow Medicine County, Minnesota
 I hereby certify that the within instrument was filed on September 11, 2023 at 12:35 PM

Janel Timm, Yellow Medicine County Recorder

By *Marit Nordang* Deputy

STATEMENT OF EVIDENCE

W $\frac{1}{4}$ 29-115-41

KLJ contacted the following for survey information

MN GLO/BLM original survey records
Yellow Medicine County Recorder's Office
MNDOT office in Willmar
Yellow Medicine County Highway Engineer's Office
Bonnema Surveys, Inc. of Willmar
O'Malley & Kron Land Surveyors, Inc. of Willmar
Bueltel-Moseng Land Surveying of Marshall
Marihart Surveying, P.A. of Dawson
Egan Field & Nowak, Inc of New Brighton
E.G. Rud & Sons, Inc. of Hutchinson

In September, 1858, C.E. DAVIS & J.W. WEBB JR., General Land Office Deputy Surveyors performing the original survey of the subdivision lines set a wood post, in mound with pits.

In April, 2007, Roy Marihart MN LS 19092 filed a Certificate of Survey at the Yellow Medicine County Recorders Office in the SE $\frac{1}{4}$ of said Section 29. These are stored in a file as courtesy copies, and are not recorded. They are available for viewing and copies can be made upon request. The Certificate of Survey does not show this corner however it indicates a full section breakdown mathematically and the position of the monument is intended to be straight line single proportion.

In August, 2009, Dan Bueltel, MN LS 43844 filed a Certificate of Survey at the Yellow Medicine County Recorders Office in the E $\frac{1}{2}$ of said Section 29. These are stored in a file as courtesy copies, and are not recorded. They are available for viewing and copies can be made upon request. The Certificate of Survey shows that Dan found and used this corner, but has no distance to it. Extending the line from the east passes through the monument.

On June 7, 2023, KLJ dug and found a $\frac{1}{2}$ " rebar capped iron monument set by Roy Marihart, MN LS 19092, and accepted the monument as the West $\frac{1}{4}$ corner. This falls on centerline of the township road.

On June 20, 2023, KLJ contacted Roy Marihart, MN LS 19092 and he stated that he is retired and he is not going to file corner certificates on any of his Section corner monuments.

STATEMENT OF EVIDENCE

SW 29-115-41

KLJ contacted the following for survey information

MN GLO/BLM original survey records
Yellow Medicine County Recorder's Office
MNDOT office in Willmar
Yellow Medicine County Highway Engineer's Office
Bonnema Surveys, Inc. of Willmar
O'Malley & Kron Land Surveyors, Inc. of Willmar
Bueltel-Moseng Land Surveying of Marshall
Marihart Surveying, P.A. of Dawson
Egan Field & Nowak, Inc of New Brighton
E.G. Rud & Sons, Inc. of Hutchinson

In September, 1858, C.E. DAVIS & J.W. WEBB JR., General Land Office Deputy Surveyors performing the original survey of the subdivision lines set a wood post, in mound with pits.

Date Not Shown, County Highway Engineer's Office shows ties of 62.3' 24" cottonwood NW, 63.0 T.P. NW & 49.2 T.P. NW. There is no indication of a monument found or set. All ties are gone.

In April, 2007, Roy Marihart MN LS 19092 filed a Certificate of Survey at the Yellow Medicine County Recorders Office in the SE $\frac{1}{4}$ of said Section 29. These are stored in a file as courtesy copies, and are not recorded. They are available for viewing and copies can be made upon request. The Certificate of Survey shows that Roy found this corner and the distance from the SE to the S $\frac{1}{4}$ is shown as 2651.18' likely in Yellow Medicine County ground distances.

In December, 2013, Roy Marihart MN LS 19092 filed a Certificate of Survey at the Yellow Medicine County Recorders Office in the NW $\frac{1}{4}$ of Section 32 said Township. These are stored in a file as courtesy copies, and are not recorded. They are available for viewing and copies can be made upon request. The Certificate of Survey shows that Roy found this corner and the distance from the SE to the S $\frac{1}{4}$ is shown as 2651.18' likely in Yellow Medicine County ground distances.

On June 7, 2023, KLJ dug and found a $\frac{1}{2}$ " rebar capped iron monument set by Roy Marihart, MN LS 19092, and accepted the monument as the Southwest corner This falls on centerline-centerline of the township roads.

On June 20, 2023, KLJ contacted Roy Marihart, MN LS 19092 and he stated that he is retired and he is not going to file corner certificates on any of his Section corner monuments.

CERTIFICATE OF LOCATION OF GOVERNMENT CORNER

EAST QUARTER of Section 29, Township 115, Range 41, 5TH P.M.

STATE OF MINNESOTA, County of YELLOW MEDICINE

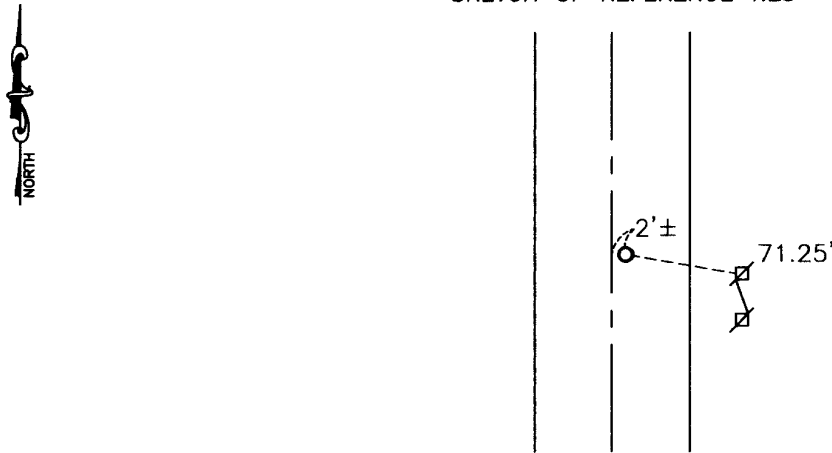
At the corner location shown on the sketch:

On _____ found a _____
DATE

left monument as found, lowered monument, removed monument (explain)

On 08-11-2009 placed a SURVEY SPIKE WITH SEAL #43844
DATE

SKETCH OF REFERENCE TIES



Nail and survey marker in north pole of double pole East 71.25'

Minnesota State Plane Coordinate
System Yellow Medicine County Datum
NAD83 (1996)

N: 172165.788
E: 523693.764

Statement of evidence relative to this corner location is on back of page.

I hereby certify that this document and the data contained herein was prepared by me or under my direct supervision.

[Signature] 2/10/2010
SIGNATURE DATE

Registration No. 43844

- Land Surveyor, Professional Engineer
- County Surveyor, County Engineer

OFFICE OF THE COUNTY RECORDER

County of _____

I hereby certify that this document was filed in the Co. Recorders office at _____ .M on the _____ day of _____ A.D. 20 _____

County Recorder _____

By _____, Deputy

DOCUMENT NO. _____

Statement of Evidence

In 1864, Chas E. Davis and J. W. Webb, Jr., did the original subdivision of the township.

On August 11, 2009, Bueltel-Moseng Land Surveying set a survey spike with seal #43844 on line and single proportionate distances between the section corners. The corner fell 2'± east of the centerline of the road.

Doc# 250206 Fee: \$0.00 2 Pages

Office of County Recorder

Yellow Medicine County, Minnesota

I hereby certify that the within instrument
was filed on April 14, 2010 at 8:15 AM

Kay Zempel, Yellow Medicine County Recorder

By Kay Zempel Deputy

N/C

Bueltel-Moseng Land Surveying

P. O. Box 32

Marshall, MN 56258

CERTIFICATE OF LOCATION OF GOVERNMENT CORNER

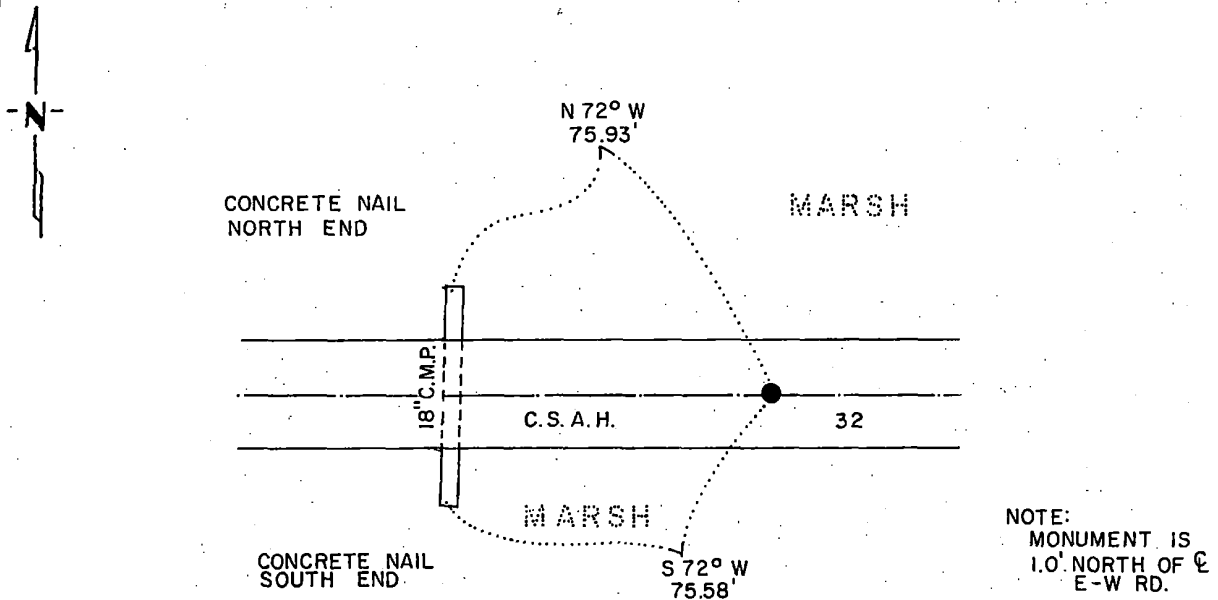
NORTH QUARTER Corner of Section 29, Township 115 N., Range 41 W., 5th P.M.

STATE OF MINNESOTA, County of YELLOW MEDICINE

At the corner location shown on the sketch:

- On _____ found a _____
DATE
- left monument as found, lowered monument, removed monument (explain)
- On 9-25-84 placed a 1 1/4" x 1 1/4" x 20" PERFORATED STEEL TUBE WITH
DATE ALUMINUM CAP STAMPED "DNR SURVEY MARKER", DOWN 0.3'

SKETCH OF REFERENCE TIES



NOTE:
MONUMENT IS
1.0' NORTH OF C
E-W RD.

BEARINGS OBSERVED WITH COMPASS

Statement of evidence relative to this corner location is on back of page.

J.A.G. 10-2-84
G-835

I hereby certify that this document and the data contained herein was prepared by me or under my direct supervision.

John D. Walker 11-8-84
SIGNATURE DATE

Registration No. 16098
 Land Surveyor, Professional Engineer
 County Surveyor, County Engineer

OFFICE OF THE COUNTY RECORDER
County of Yellow Medicine

I hereby certify that this document was filed in the Co. Recorders office at 9:50 A.M. on the 15 day of Novmeber A.D., 19 84

County Recorder Sumner J. Opdahl

By _____, Deputy

DOCUMENT NO. 185093

RECORDED
GRANTOR
GRANTEE
INDEXED

North Quarter Corner Section 29, Township 115 North, Range 41 West

This corner was originally established by the U. S. General Land Office in 1864. The government notes show the corner is in a lake with a witness corner set 5.43 chains (358.38 feet) East and marked with a wood post in mound of earth with pits and trench dug around the mound.

In May 1984, the DNR Bureau of Engineering contacted the Yellow Medicine County Offices of the Recorder and Highway Engineer for corner information.

The following information was obtained from the County Recorder's Office: Surveyor's Record Book, on Page 74, contains a survey made by Jonah Peterman, County Surveyor, in December 1889. Survey states that this corner was not found. A distance of 79.74 chains (5262.84 feet), GLO measurement, is shown along the north line of Section 29. Corner was established in a slough, midway and on line between the section corners. The witness corner is shown 5.30 chains East of corner. Survey does not mention what was set at quarter corner or what was found at witness corner.

The following information was obtained from the D.N.R. Bureau of Engineering Records:

In December 1961, the corner was assumed on line between section corners and in line with a crop line and fence line south. Corner is shown:

2667.0 feet from the northeast corner of Section 29

2619.0 feet from the northwest corner of Section 29

Survey does not indicate what was set to mark this location, and no information is given on the witness corner.

On May 31, 1984, the DNR Bureau of Engineering traversed to the area of the corner and located the intersection of the center line of an east-west road and a vague field division about 1000 feet south.

On June 7, 1984, the D.N.R. Bureau of Engineering dug a hole ten feet east-west by five feet north-south the center being at the intersection of the center line of road and field division. At a depth of 68 inches encountered a layer of black dirt under which was a layer of rocks throughout entire hole. Rocks appear to have been placed as a base for road. Stopped digging as these rocks were at natural ground.

Did not search for evidence of witness corner because no record of its perpetuation could be found. Computed the lost position for corner and found it to be:

2642.36 feet from section corners

2.37 feet north and 23.38 feet east of the intersection of road and field division

Did not dig for a monument at the lost position because no record of a monument being set could be found.

Accept the lost position as the location of the original government corner.

Traverse information is available from the DNR Bureau of Engineering.

CERTIFICATE OF LOCATION OF GOVERNMENT CORNER

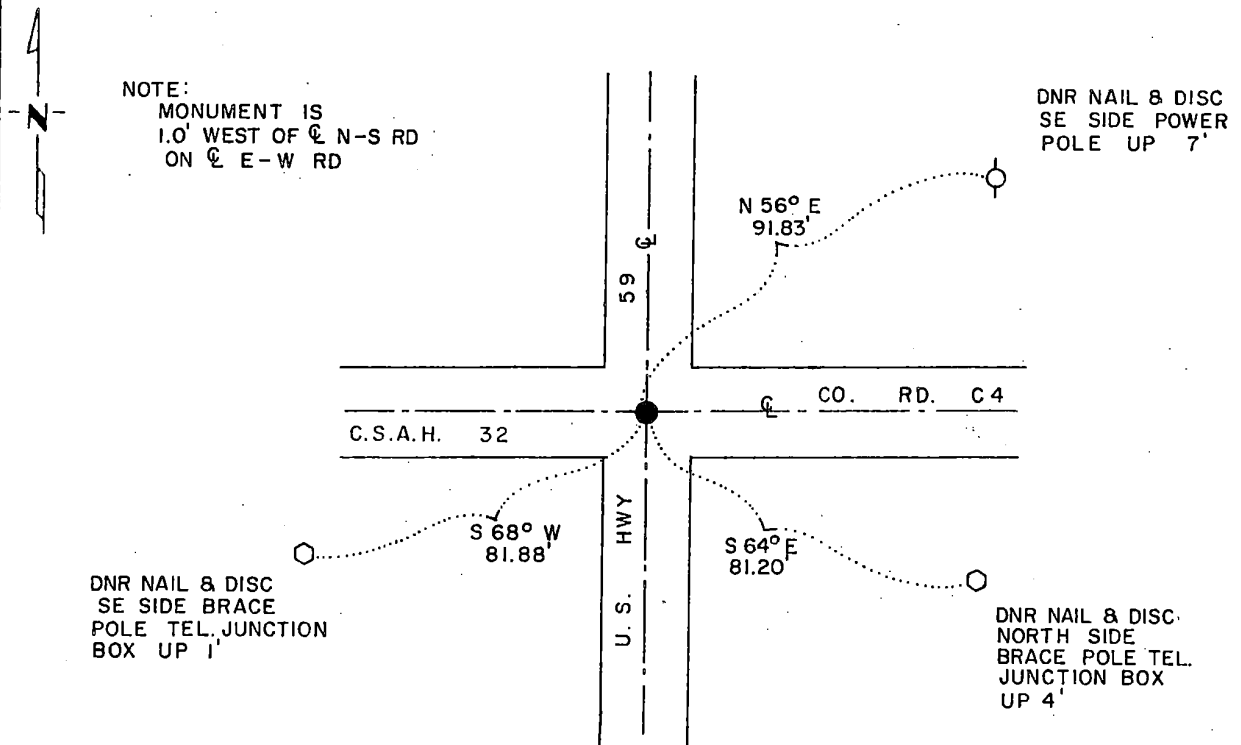
NORTHEAST Corner of Section 29, Township 115 N, Range 41 W, 5th P.M.

STATE OF MINNESOTA, County of YELLOW MEDICINE

At the corner location shown on the sketch:

- On 5/24/84 found a 6" x 6" GRANITE STONE DOWN 40"
DATE
- left monument as found, lowered monument, removed monument (explain)
- On 5/24/84 placed a 1 1/4" x 1 1/4" x 20" PERFORATED STEEL TUBE WITH
DATE ALUMINUM CAP STAMPED "DNR SURVEY MARKER", DOWN 0.1'

SKETCH OF REFERENCE TIES



BEARINGS OBSERVED WITH COMPASS

Statement of evidence relative to this corner location is on back of page.

G-835
6/25/84 J.A.G.

I hereby certify that this document and the data contained herein was prepared by me or under my direct supervision.

John D. Walker 11-8-84
SIGNATURE DATE

Registration No. 16098

- Land Surveyor, Professional Engineer
- County Surveyor, County Engineer

OFFICE OF THE COUNTY RECORDER
 County of Yellow Medicine

I hereby certify that this document was filed in the Co. Recorders office at 9:45 A.M. on the 15 day of November A.D., 1984

County Recorder Annand Opdane
 By _____, Deputy

DOCUMENT NO. 185092

RECORDED
 INDEXED
 FILED

Northeast Corner Section 29, Township 115 North, Range 41 West

This corner was originally established by the U. S. General Land Office survey in 1864. The government notes show corner marked with a wood post set in mound of earth with pits and trench dug around the mound.

In May 1984, the DNR Bureau of Engineering contacted the Yellow Medicine County Offices of the Recorder and Highway Engineer for corner information.

The following information was obtained from the County Recorder's Office: Surveyor's Record Book, on Page 74, contains a survey made by Jonah Peterman, County Surveyor, in December 1889. Survey mentions that the government corner was found. Stone is written by the corner.

Surveyor's Record Book B, on Page 93, contains a survey made by John Norgaard, County Surveyor, in 1901. Survey mentions that a stone and stake, which had been set in government mound by adjoining landowners, were found at corner, at the intersection of roads. A 6 inch by 6 inch by 24 inch jasper granite was set to mark this location.

Surveyor's Record Book, on Page 453, contains a list of ties to government corners, date and surveyor not indicated. No information is given as to what was found or set at corner, but the following ties are shown:

- telephone pole, southwest, 38 feet
- sign post, southeast, 29.5 feet

The following information was obtained from the County Highway Engineer's Office:

A section corner tie book, date not indicated, does not mention what was found or set at corner, but the following ties are shown:

- telephone pole, southwest, 81.8 feet
- guide pole, southeast, 82.6 feet
- power pole, northeast, 83.5 feet
- concrete bench mark post, northwest, 98.1 feet

The following information was obtained from the D.N.R. Bureau of Engineering Records:

In December 1961, ties for corner were obtained from the County Highway Engineer's Office and a corner position was established from them.

Survey does not mention what was set at corner, but the following ties are shown:

- on center line of roads, north-south and east-west
- guide pole, southeast, 82.55 feet
- power pole, northeast, 83.53 feet
- bench mark, northwest, 98.05 feet

In April 1984, the DNR Bureau of Engineering received the following information from the Minnesota Department of Transportation Office in St. Paul:

A right-of-way map of U. S. Highway 59, date not indicated, shows a 6 inch by 6 inch stone monument in place at corner, at the intersection of roads north, south, east and west and 0.3 of a foot right of P.I. station 423+62.4.

On May 24, 1984, the DNR Bureau of Engineering traversed to the area of the corner and found U. S. Highway 59 P.I. station 423+62.4, a 3/4 inch by 6 inch iron rod, set over a 1 inch by 18 inch iron rod. Then easterly 0.34 of a foot from iron rods marking P.I. station, a 3/4 inch by 7 inch iron rod was found down 4 inches over a 1/2 inch by 10 inch rebar down 20 inches over a 6 inch by 6 inch cut granite stone down 40 inches. Two 1/2 inch by 10 inch rebars and a wood hub were found beside stone.

Accept the stone as the location of the original government corner. Left stone and irons beside it as found and reset irons marking P.I. station as found.

Traverse information is available from the DNR Bureau of Engineering.

Doc# 261837 Fee: \$0.00 2 Pages

Property & Public Services
Property Records Division
Yellow Medicine County, Minnesota
I hereby certify that the within instrument
was filed on April 16, 2015 at 10:15 AM

Janel Timm, Yellow Medicine County Recorder

By Kelly Kuger Deputy

CERTIFICATE OF LOCATION OF GOVERNMENT CORNER

North Quarter Corner of Section 30, Township 115, Range 41

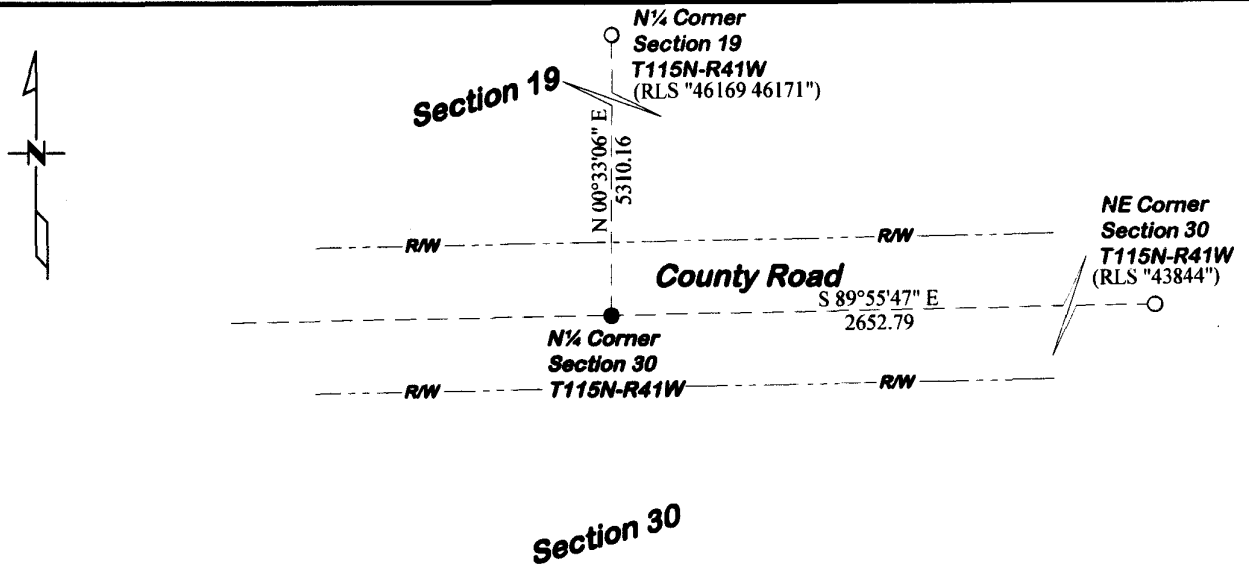
Fifth Principal Meridian, State of Minnesota, County of Yellow Medicine

At the corner location shown on the sketch:

On 4/30/12 found a Nothing
DATE

left monument as found lowered monument removed monument (explain)

On 5/16/12 placed a Capped Iron Rod "46169 46171"
DATE



Statement of evidence for this corner location is on back of this page.

I hereby certify that this document was researched and prepared by me or under my direct supervision.

Signature Matthew Anderson

Date 7/30/12

License No. 46171

Title: Land Surveyor

Professional Engineer

County Surveyor

County Engineer

STATEMENT OF EVIDENCE

North Quarter Corner of Section 30 T115N-R41W

- 1864 Chas E. Davis and J.W. Webb Jr. were contracted by the United States Government Land Office to perform the Original Public Land Survey in this township. They record in their field notes "set post in mound with pits for quarter section corner".
- 1901 John Norgaard, County Surveyor, records in Yellow Medicine County Surveyor's Record Book A page 76, "found iron bolt in the Gov't mound".
- May 16, 2012 Matthew D. Runke, P.L.S. #46171, set a Capped Iron Rod "46169 46171" at the corner position using single proration methods from dimensions shown on 1901 Norgaard survey. No large excavation was done for this corner because it falls within the road Right of Way.

CERTIFICATE OF LOCATION OF GOVERNMENT CORNER

NORTHEAST of Section 30, Township 115, Range 41, 5TH P.M.

STATE OF MINNESOTA, County of YELLOW MEDICINE

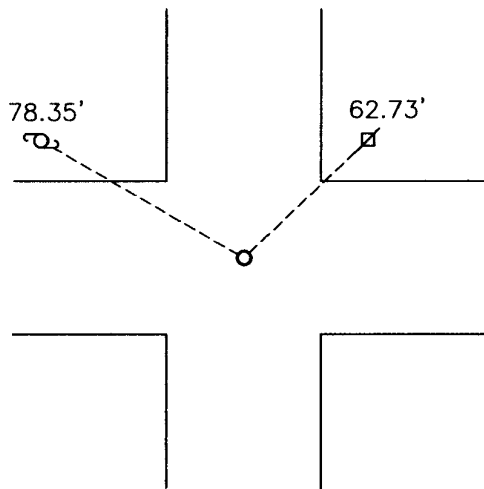
At the corner location shown on the sketch:

On 08-06-2009 found a BRIDGE SPIKE
DATE

left monument as found, lowered monument, removed monument (explain)

On 08-06-2009 placed a 5/8" IRON WITH SEAL #43844
DATE

SKETCH OF REFERENCE TIES



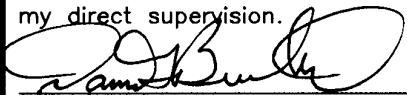
Minnesota State Plane Coordinate
System Yellow Medicine County Datum
NAD83 (1996)

N: 174878.157
E: 518409.838

Nail and seal in power pole NE 62.73'
Top center of rural water valve NW 78.35'

Statement of evidence relative to this corner location is on back of page.

I hereby certify that this document and the data contained herein was prepared by me or under my direct supervision.


SIGNATURE 2/10/2010
DATE

Registration No. 43844

Land Surveyor, Professional Engineer
 County Surveyor, County Engineer

OFFICE OF THE COUNTY RECORDER
County of _____

I hereby certify that this document was filed in the Co. Recorders office at _____ .M on the _____ day of _____ A.D. 20 _____

County Recorder _____

By _____, Deputy

DOCUMENT NO. _____

Statement of Evidence

In 1864, Chas E. Davis and J. W. Webb, Jr., did the original subdivision of the township.

The Yellow Medicine Highway Department found a DNR monument at the corner. They tied it out before construction was done on the road. After construction they replaced the monument with a bridge spike.

On August 6, 2009, Bueltel-Moseng found a bridge spike. We replaced the bridge spike with a $\frac{5}{8}$ " iron with seal #43844.

Doc# 250207 Fee: \$0.00 2 Pages

Office of County Recorder
Yellow Medicine County, Minnesota
I hereby certify that the within instrument
was filed on April 14, 2010 at 8:20 AM

N/C
Bueltel-Moseng Land Surveying
P. O. Box 32
Marshall, MN 56258

Kay Zempel, Yellow Medicine County Recorder

By Kay Zempel Deputy

CERTIFICATE OF LOCATION OF GOVERNMENT CORNER

NORTHEAST Corner of Section 30, Township 115 N, Range 41 W, 5th P.M.

STATE OF MINNESOTA, County of YELLOW MEDICINE

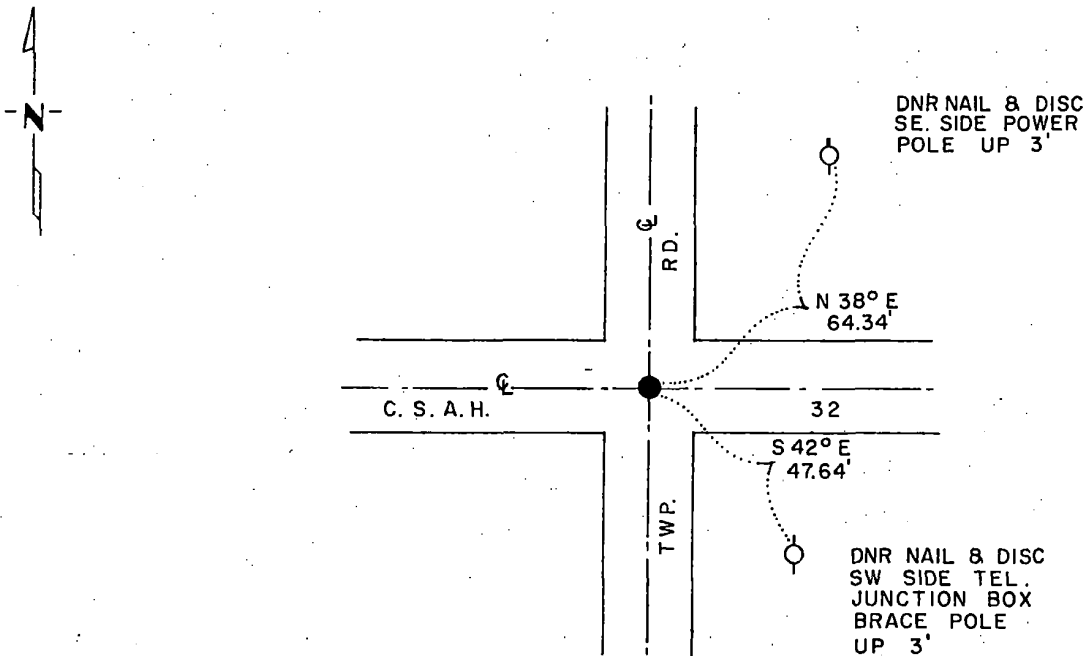
At the corner location shown on the sketch:

On 6/7/84 found a 6"x6" GRANITE STONE, DOWN 30"
DATE

left monument as found, lowered monument, removed monument (explain)

On 6/7/84 placed a 1 1/4" x 1 1/4" x 20" PERFORATED STEEL TUBE WITH
DATE ALUMINUM CAP STAMPED "DNR SURVEY MARKER", DOWN 0.3'

SKETCH OF REFERENCE TIES



BEARINGS OBSERVED WITH COMPASS

Statement of evidence relative to this corner location is on back of page.

G-835
6/22/84 J.A.G.

I hereby certify that this document and the data contained herein was prepared by me or under my direct supervision.

John D. Walker 11-8-84
SIGNATURE DATE

Registration No. 16098

- Land Surveyor, Professional Engineer
 County Surveyor, County Engineer

OFFICE OF THE COUNTY RECORDER
 County of Yellow Medicine

I hereby certify that this document was filed in the Co. Recorders office at 9:55 A. M. on the 15 day of November A.D., 19 84

County Recorder Norman A. Opdala

By _____, Deputy

DOCUMENT NO. 185094

RECORDED
GRANTOR
GRANTEE
INDEXED

Northeast Corner Section 30, Township 115 North, Range 41 West

This corner was originally established by the U. S. General Land Office survey in 1864. The government notes show corner marked with a wood post set in mound of earth with pits and trench dug around the mound.

In May 1984, the DNR Bureau of Engineering contacted the Yellow Medicine County Offices of the Recorder and Highway Engineer for corner information.

The following information was obtained from the County Recorder's Office:
Surveyor's Record Book, on Page 74, contains a survey made by Jonah Peterman, County Surveyor, in December 1889. Survey mentions that the government corner was found.

Surveyor's Record Book, on Page 76, contains a survey made by John Norgaard, County Surveyor, in 1901. Survey does not mention what was found or set at corner. Corner is shown:

2653 feet from the east quarter corner of Section 19
2649 feet from the north quarter corner of Section 30

Surveyor's Record Book B, on Page 93, contains a survey made by John Norgaard, County Surveyor, in 1901. Survey mentions that a stake, which had been set in government mound by an adjoining landowner about 14 years ago, was found at corner. A 6 inch by 6 inch by 24 inch jasper granite was set to mark this location.

The following information was obtained from the County Highway Engineer's Office:

A section corner tie book shows that corner was assumed in 1958, but does not mention what was set. The following ties are shown to corner:

telephone pole, northwest, 76.1 feet
telephone pole, east-southeast, 170.1 feet
power pole, northeast, 63.9 feet
telephone pole, southeast, 58.9 feet
power pole, northwest, 44.0 feet

The following information was obtained from the D.N.R. Bureau of Engineering Records:

In December 1961, ties for corner were obtained from the County Highway Engineer's Office and a corner position was established from them.

Survey does not mention what was set at corner, but the following ties are shown:

on center line of roads, north-south and east-west
power pole, northeast, 63.9 feet
telephone pole, southeast, 47.2 feet

In June 5, 1984, the DNR Bureau of Engineering traversed to the area of the corner and located the intersection of roads north-south and east-west.

On June 7, 1984, the D.N.R. Bureau of Engineering found a 6 inch by 6 inch cut granite stone down 30 inches at natural ground. Left stone as found and set a ½ inch by 12 inch telephone pole bolt on its east side. Searched for but did not find any previous ties.

Accept the stone as the location of the original government corner.

Traverse information is available from the DNR Bureau of Engineering.

CERTIFICATE OF LOCATION OF GOVERNMENT CORNER

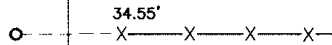
East Quarter Corner of Section 33, Township 115, Range 41, 5th P.M.

STATE OF MINNESOTA, County of Yellow Medicine

At the corner location shown on the sketch:

- On _____ found a _____
DATE
- left monument as found, lowered monument, removed monument (explain)
- On Oct. 28, 2003 placed a 1" iron pipe w/seal #11943 (see back)
DATE

SKETCH OF REFERENCE TIES



Nail & Seal in Fence Post E 34.55'

Statement of evidence relative to this corner location is on back of page.

I hereby certify that this document and the data contained herein was prepared by me or under my direct supervision.

Ayle E Meering 1-28-04
SIGNATURE DATE

Registration No. 11943

- Land Surveyor, Professional Engineer
- County Surveyor, County Engineer

OFFICE OF THE COUNTY RECORDER

County of _____

I hereby certify that this document was filed in the Co. Recorders office at _____ M on the _____ day of _____ A.D. 20 _____

County Recorder _____

By _____, Deputy

DOCUMENT NO. _____

Statement of Evidence

Nothing previously recorded as being set.

On October 27, 2003, Moseng Land Surveying dug with a backhoe in center road and in line with fence and found nothing. Placed a 1" iron pipe with seal #11943 midway and on line between section corners. Corner fell in line with fence to the East.

Doc# 237022 Fee: \$.00 2 Pages
Office of County Recorder, Yellow Medicine County, Minnesota
I hereby certify that the within instrument was
filed on January 7, 2005 at 03:20 PM

Kay Zempel, Yellow Medicine County Recorder
BY Paul Kork Deputy

CERTIFICATE OF LOCATION OF GOVERNMENT CORNER

Northeast Corner of Section 33, Township 115, Range 41, 5th P.M.

STATE OF MINNESOTA, County of Yellow Medicine

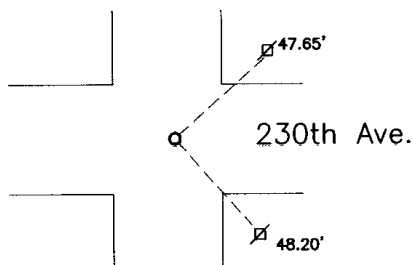
At the corner location shown on the sketch:

On Oct. 27, 2003 found a 6"x6" square cut granite stone
DATE

left monument as found, lowered monument, removed monument (explain)

On Oct. 28, 2003 placed a 1" iron pipe w/seal #11943 at road surface over stone
DATE

SKETCH OF REFERENCE TIES



Nail & Seal in Power Pole NE 47.65'

Nail & Seal in Power Pole SE 48.20'

Statement of evidence relative to this corner location is on back of page.

I hereby certify that this document and the data contained herein was prepared by me or under my direct supervision.

Dyle E. Mosina 1-28-04
SIGNATURE DATE

Registration No. 11943

Land Surveyor, Professional Engineer
 County Surveyor, County Engineer

OFFICE OF THE COUNTY RECORDER

County of _____

I hereby certify that this document was filed in the Co. Recorders office at _____ M on the _____ day of _____ A.D. 19 _____

County Recorder _____

By _____, Deputy

DOCUMENT NO. _____

Statement of Evidence

Stone recorded as being found in 1951

On October 27, 2003, Moseng Land Surveying dug with a backhoe in center of intersection. Found a 6"x6" square cut granite stone 4-5 feet down. Placed a 5/8" iron with seal #11943 on the north side of stone and set a 1" iron pipe with seal #11943 at road surface, over the found stone.

Doc# 236821 Fee: \$.00 2 Pages
Office of County Recorder, Yellow Medicine County, Minnesota
I hereby certify that the within instrument was
filed on December 17, 2004 at 08:45 AM

Kay Zempel, Yellow Medicine County Recorder
BY Kay Zempel Deputy

CERTIFICATE OF LOCATION OF GOVERNMENT CORNER

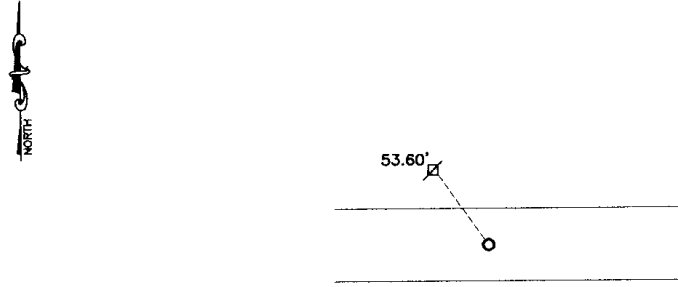
East Quarter Corner of Section 34, Township 115, Range 41, 5th P.M.

STATE OF MINNESOTA, County of Yellow Medicine

At the corner location shown on the sketch:

- On _____ found a _____
DATE
- left monument as found, lowered monument, removed monument (explain)
- On Oct. 28, 2003 placed a 1" iron pipe w/seal #11943 (see back)
DATE

SKETCH OF REFERENCE TIES



Nail & Seal in Power Pole NW 53.60'

Statement of evidence relative to this corner location is on back of page.

I hereby certify that this document and the data contained herein was prepared by me or under my direct supervision.

Lyle C Mosing 1-28-04
SIGNATURE DATE

Registration No. 11943

- Land Surveyor, Professional Engineer
- County Surveyor, County Engineer

OFFICE OF THE COUNTY RECORDER

County of _____

I hereby certify that this document was filed in the Co. Recorders office at _____ .M on the _____ day of _____ A.D. 19 _____

County Recorder _____

By _____, Deputy

DOCUMENT NO. _____

Statement of Evidence

Nothing previously recorded as being set.

On October 27, 2003, Moseng Land Surveying placed a 1" iron pipe with seal #11943 midway and on line between section corners.

Doc# 237024 Fee: \$0.00 2 Pages
Office of County Recorder, Yellow Medicine County, Minnesota
I hereby certify that the within instrument was
filed on January 7, 2005 at 03:30 PM

Kav Zempel, Yellow Medicine County Recorder
BY *David Rohlik* Deputy

CERTIFICATE OF LOCATION OF GOVERNMENT CORNER

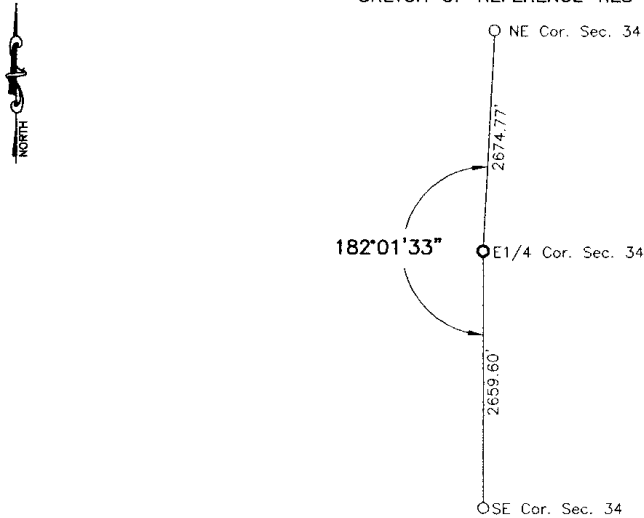
East Quarter Corner of Section 34, Township 115, Range 41, 5th P.M.

STATE OF MINNESOTA, County of Yellow Medicine

At the corner location shown on the sketch:

- On _____ found a _____
DATE
- left monument as found, lowered monument, removed monument (explain)
- On Oct. 28, 2003 placed a 1" iron pipe w/seal #11943 (see back)
DATE

SKETCH OF REFERENCE TIES



Nothing to tie to.

Statement of evidence relative to this corner location is on back of page.

I hereby certify that this document and the data contained herein was prepared by me or under my direct supervision.

Ayle C. Moring 1-28-04
SIGNATURE DATE

Registration No. 11943

- Land Surveyor, Professional Engineer
- County Surveyor, County Engineer

OFFICE OF THE COUNTY RECORDER

County of _____

I hereby certify that this document was filed in the Co. Recorders office at _____ M on the _____ day of _____ A.D. 20____

County Recorder _____

By _____, Deputy

DOCUMENT NO. _____

Statement of Evidence

Nothing previously recorded as being set.

On October 27, 2003, Moseng Land Surveying placed a 1" iron pipe with seal #11943 in center line of road and in line with fences.

Doc# 237023 Fee: \$.00 2 Pages
Office of County Recorder, Yellow Medicine County, Minnesota
I hereby certify that the within instrument was
filed on January 7, 2005 at 03:25 PM

Kay Zempel, Yellow Medicine County Recorder
BY Paul RORUK Deputy

CERTIFICATE OF LOCATION OF GOVERNMENT CORNER

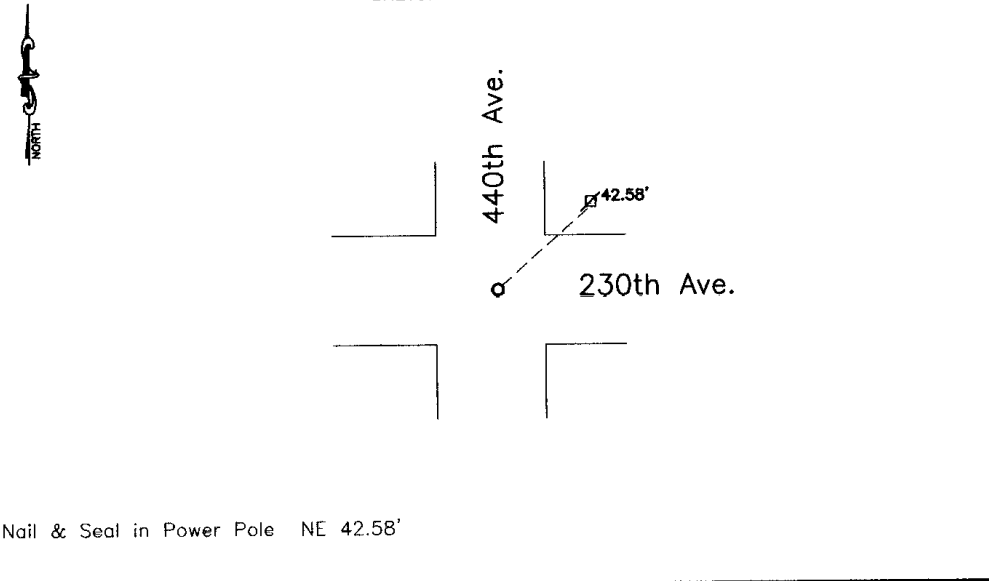
Northeast Corner of Section 34, Township 115, Range 41, 5th P.M.

STATE OF MINNESOTA, County of Yellow Medicine

At the corner location shown on the sketch:

- On Oct. 27, 2003 found a 6"x6" square cut granite stone
DATE
- left monument as found, lowered monument, removed monument (explain)
- On Oct. 28, 2003 placed a 1" iron pipe w/seal #11943 at road surface over stone
DATE

SKETCH OF REFERENCE TIES



Statement of evidence relative to this corner location is on back of page.

I hereby certify that this document and the data contained herein was prepared by me or under my direct supervision.

Ryle E Mooring 1-28-04
SIGNATURE DATE

Registration No. 11943
 Land Surveyor, Professional Engineer
 County Surveyor, County Engineer

OFFICE OF THE COUNTY RECORDER

County of _____
 I hereby certify that this document was filed in the Co. Recorders office at _____ M on the _____ day of _____ A.D. 19 _____

County Recorder _____
 By _____, Deputy
 DOCUMENT NO. _____

Statement of Evidence

Stone recorded as being found in 1951

On October 27, 2003, Moseng Land Surveying dug with a backhoe in center of intersection. Found a 6"x6" square cut granite stone 1.5± down. Set a 1" iron pipe with seal #11943 at road surface, over the found stone.

Doc# 236826 Fee: \$.00 2 Pages
Office of County Recorder, Yellow Medicine County, Minnesota
I hereby certify that the within instrument was
filed on December 17, 2004 at 09:10 AM

Kay Zempel, Yellow Medicine County Recorder
BY Kay Zempel Deputy

Statement of Evidence: SECTION 36-115-41

N1/4 COR. SEC. 36-115-41

On January 27, 2014 Roy Marihart set 5/8" iron with seal #19092 in centerline of road and midway between section corners.

On July 30, 2021 Bueltel-Moseng Land Surveying did not find iron set by Roy Marihart. Reset corner using Mariharts survey from 2014.

SW COR. SEC. 36-115-41 (NE COR. 2-114-41)

On July 30, 2021 Bueltel-Moseng Land Surveying dug with backhoe and found a 6"x6"x18" quarried stone and set a cast iron monument over top of the stone.

S1/4 COR. SEC. 36-115-41 (N1/4 COR. 1-114-41)

On July 30, 2021 Bueltel-Moseng Land Surveying set a 5/8" iron with seal #43844 midway and on line between section corners, corner fell 1'± south of the centerline of the road.

SE COR. SEC. 36-115-41 (NE COR. 1-114-41)

On July 30, 2021 Bueltel-Moseng Land Surveying found a bridge spike, removed and dug with a backhoe, found nothing. Replaced bridge spike with 5/8" iron with seal #43844.

CERTIFICATE OF LOCATION OF GOVERNMENT CORNER

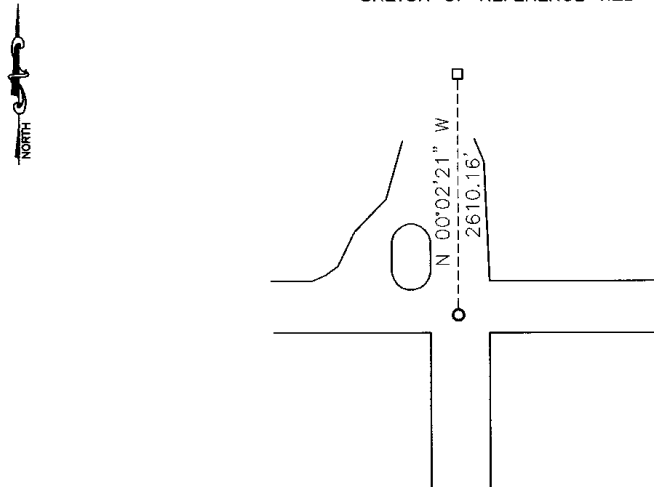
NORTHEAST Corner of Section 36, Township 115, Range 41, 5th P.M.

STATE OF MINNESOTA, County of YELLOW MEDICINE

At the corner location shown on the sketch:

- On _____ found a _____
DATE
- left monument as found, lowered monument, removed monument (explain)
- On 6-20-2005 placed a 1 1/2" IRON PIPE WITH SEAL AT ROAD SURFACE
DATE

SKETCH OF REFERENCE TIES



Statement of evidence relative to this corner location is on back of page.

I hereby certify that this document and the data contained herein was prepared by me or under my direct supervision.

Kyle E. Moring 12-14-05
SIGNATURE DATE

Registration No. 11943

- Land Surveyor, Professional Engineer
- County Surveyor, County Engineer

OFFICE OF THE COUNTY RECORDER

County of _____

I hereby certify that this document was filed in the Co. Recorders office at _____ .M on the _____ day of _____ A.D. 20 _____

County Recorder _____

By _____, Deputy

DOCUMENT NO. _____

Statement of Evidence

John Norgaard set a 6" X 6" X 2' long granite stone at section corner between May 1899 & September 1901.

1941 - Corner was recorded as a large red stone.

On June 20, 2005 Bueltel-Moseng Land Surveying set a 1 1/2" iron pipe with seal at road surface after digging with a backhoe (Jeseritz Construction), and finding nothing.

Nfc Lyle Moseng
703 Lawrence St
Marshall MN
56258

Doc# 239634 Fee: \$.00 2 Pages

Office of County Recorder
Yellow Medicine County, Minnesota
I hereby certify that the within instrument
was filed on December 20, 2005 at 10:25 AM

Kay Zempel, Yellow Medicine County Recorder

BY Kay Zempel Deputy

Doc# 281106 Fee: \$0.00 2 Pages
 Property & Public Services
 Property Records Division
 Yellow Medicine County, Minnesota
 I hereby certify that the within instrument
 was filed on October 18, 2023 at 10:00 AM

Janel Timm, Yellow Medicine County Recorder

By Marit Nordang Deputy

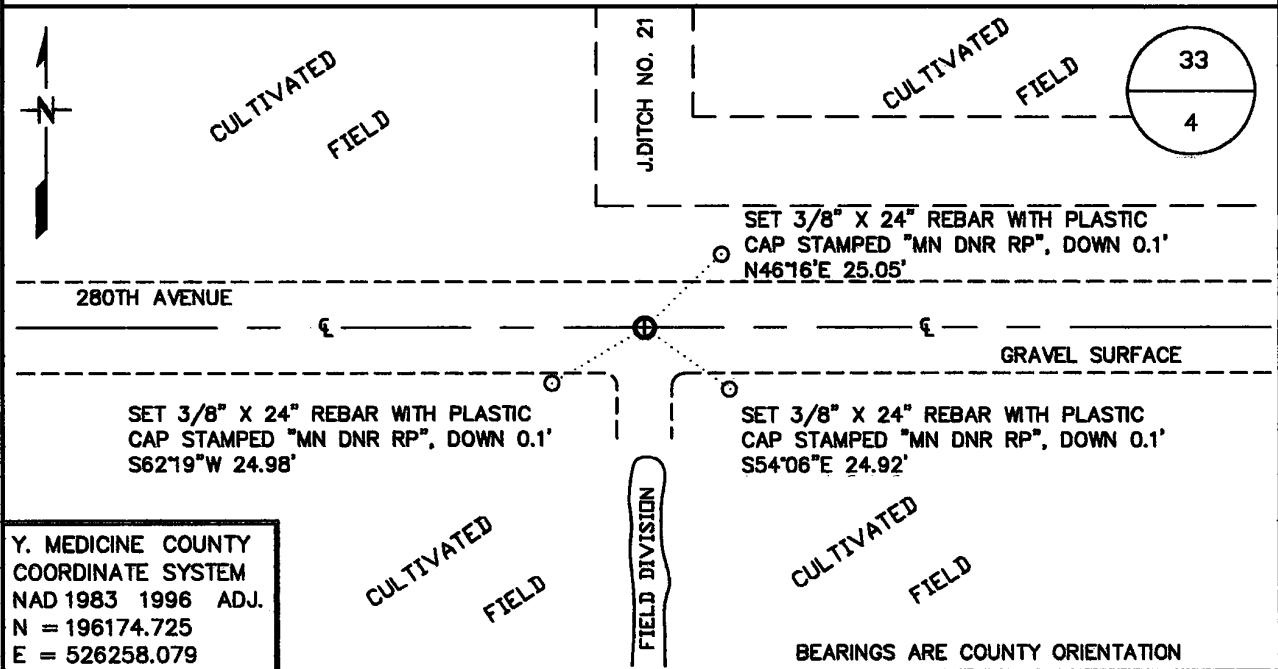
Index No. A-11

CERTIFICATE OF LOCATION OF GOVERNMENT CORNER

NORTH QUARTER Corner of Section 4, Township 115 N, Range 41 W
5TH Principal Meridian, State of Minnesota, County of YELLOW MEDICINE

At the corner location shown on the sketch:

- On 7/19/2023 found a 5/8" REBAR WITH PLASTIC CAP STAMPED "LS 19092"
 DATE DOWN 0.3' AT CL ROAD AND DITCH NORTH
- left monument as found, lowered monument, removed monument (explain)
- On _____ Placed a _____
 DATE _____



Y. MEDICINE COUNTY
 COORDINATE SYSTEM
 NAD 1983 1996 ADJ.
 N = 196174.725
 E = 526258.079

Statement of evidence for this corner location is on back of this page.

AUG 2023
 WMA01728

I hereby certify that this plan, specification, or report was prepared by me or under my direct supervision and that I am a duly Licensed Land Surveyor under the laws of the State of Minnesota.

SIGNATURE Robert A. Langner DATE 10/10/2023 License Number 47461

STATEMENT OF EVIDENCE

North Quarter Corner of Section 4, Township 115 North, Range 41 West, 5th P.M.

The following sources were contacted for information:

Roy Marihart, Marihart Surveying, P.A.
Dan Buetel, Buetel-Moseng Land Surveying
Yellow Medicine Recorders office
Yellow Medicine Highway Department
Minnesota History Center
U of M Historical Aerial Photo Online Library

In 1865, W. J. Neely set post, deposited coal and made mound trench & pits as per instructions.

Page 405 of the large Book of Surveys, located in the office of the Yellow Medicine County Recorder, contains a survey by County Surveyor, John Norgaard, dated June 1918. Mr. Norgaard notes "S. ¼ Post – Fence lines running North-South as were set when Govt ran over plains." A distance of 2659 feet is shown to the northeast corner of Section 4.

A 1938 historic aerial photo obtained from the U of M Historical Aerial Photo Online Library depicts occupation lines North, South, East, and West of the presumed corner location.

Roy Marihardt provided CAD files for work done in the area. A corner location was depicted but there was no indication of a monument at the corner.

In July 2023, a DNR Survey Crew navigated to the area and searched the intersection of the gravel road, and extension of a ditch running North. They found a Marihart Monument down 0.3' in the centerline of gravel East-West road and extension of ditch north.

In August 2023 the DNR Survey crew returned with a wildlife backhoe operator to excavate corner. They excavated an area 7 feet north-south by 11 feet east-west to a depth of 3.5 feet. Natural grade was found to be down 1-1.5 feet. No additional evidence of the corner location was found.

After analysis of the record information and field data, Marihart's found monument was accepted as the perpetuation of the government corner position.

CERTIFICATE OF LOCATION OF GOVERNMENT CORNER

EAST QUARTER Corner of Section 27, Township 115, Range 41, 5TH P.M.

STATE OF MINNESOTA, County of YELLOW MEDICINE

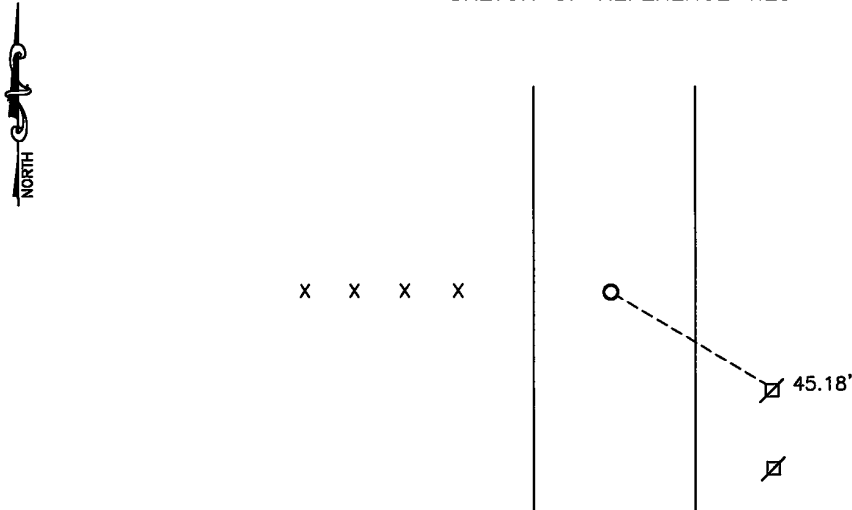
At the corner location shown on the sketch:

On 9/19/14 found a 1.5" pipe
DATE

left monument as found, lowered monument, removed monument (explain)

On 9/19/14 placed a 5/8" iron w/seal #43844
DATE

SKETCH OF REFERENCE TIES



Minnesota State Plane Coordinate
System Yellow Medicine County Datum
NAD83 (1996)

Nail and survey marker in utility pole SSE 45.18'

N: 172197.972
E: 534388.241

Statement of evidence relative to this corner location is on back of page.

I hereby certify that this document and the data contained herein was prepared by me or under my direct supervision.

[Signature] 9/20/2023
SIGNATURE DATE

Registration No. 43844

- Land Surveyor, Professional Engineer
- County Surveyor, County Engineer

Doc# 280946 Fee: \$0.00 2 Pages

Property & Public Services
Property Records Division
Yellow Medicine County, Minnesota
I hereby certify that the within instrument was filed on September 20, 2023 at 10:15 AM

Janel Timm, Yellow Medicine County Recorder

By Marit Nordang Deputy

Statement of Evidence

In 1864, Chas. E. Davis and J.W. Webb Jr. did the original subdivision of the township.

On September 19, 2014, Bueltel-Moseng Land Surveying dug with a backhoe and found 1.5" pipe 3'± below the road surface. We set 5/8" iron with seal #43844 at the road surface.