

CERTIFICATE OF LOCATION OF GOVERNMENT CORNER

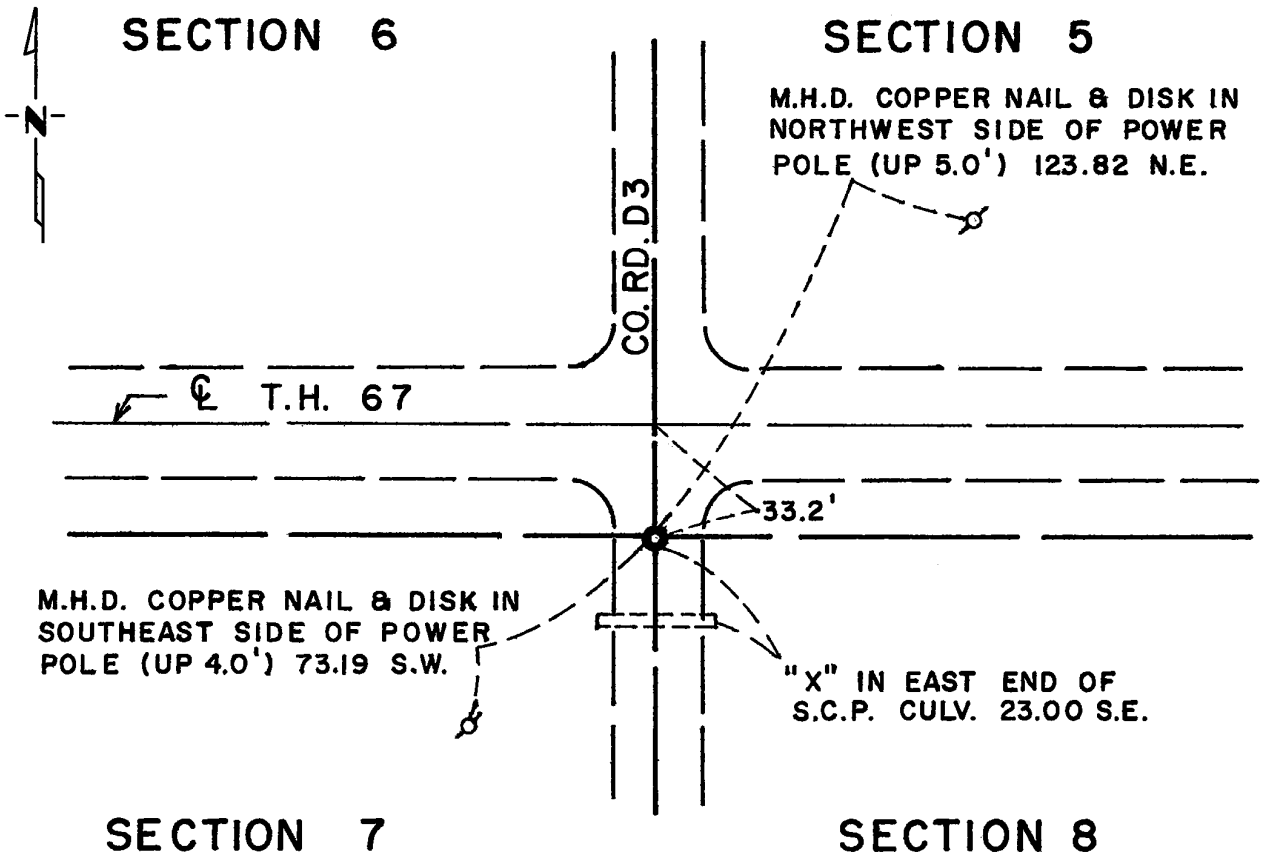
Northeast Corner of Section 7, Township 115N, Range 42W, 5th P.M.

STATE OF MINNESOTA, County of Yellow Medicine

At the corner location shown on the sketch:

- On _____ found a _____
DATE
- left monument as found, lowered monument, removed monument (explain)
- On 7/13/76 placed a Minnesota Highway Department cast iron
DATE
monument.

SKETCH OF REFERENCE TIES



Statement of evidence relative to this corner location is on back of page.

I hereby certify that this document and the data contained herein was prepared by me or under my direct supervision.

Richard M. Lewczynski 1-17-77
SIGNATURE DATE

Registration No. 11526

- Land Surveyor, Professional Engineer
- County Surveyor, County Engineer

OFFICE OF THE REGISTER OF DEEDS
County of YELLOW MEDICINE COUNTY

I hereby certify that this document was filed in the Reg. of Deeds office at 11:10 A.M. on the 21 day of March A.D., 1977

Register of Deeds Norman J. Opdahl
By Kay Nordahl, Deputy

DOCUMENT NO. 168940



Statement of Evidence: Northeast Cor., Sec. 7, Township 115N, Range 42W

The original Public Land Survey was run in 1864 and a post set in a mound with pits to mark the original corner.

In May 1891, J. Peterman, County Surveyor, found a stone.

In 1901, John Norgaard, County Surveyor, found a stone at intersection of roads North, South, East and West and placed a 6"x6"x24" Jasper Stone Monument.

In April 1930, D. F. Mattson, Project Engineer for the Minnesota Highway Department, found the Jasper Stone monument and made ties.

In 1934, the County Highway Engineer found the monument and checked ties.

On June 30, 1976, the Minnesota Highway Department dug for the monument but did not find it.

On July 13, 1976, the Minnesota Highway Department set a cast iron monument using information and ties from the right-of-way map and final grading plans. Top of monument is down 2" below surface.

An analysis of the record data indicates the cast iron monument set by the Minnesota Department of Transportation is accepted as the location of the Public Land Survey corner.

CERTIFICATE OF LOCATION OF GOVERNMENT CORNER

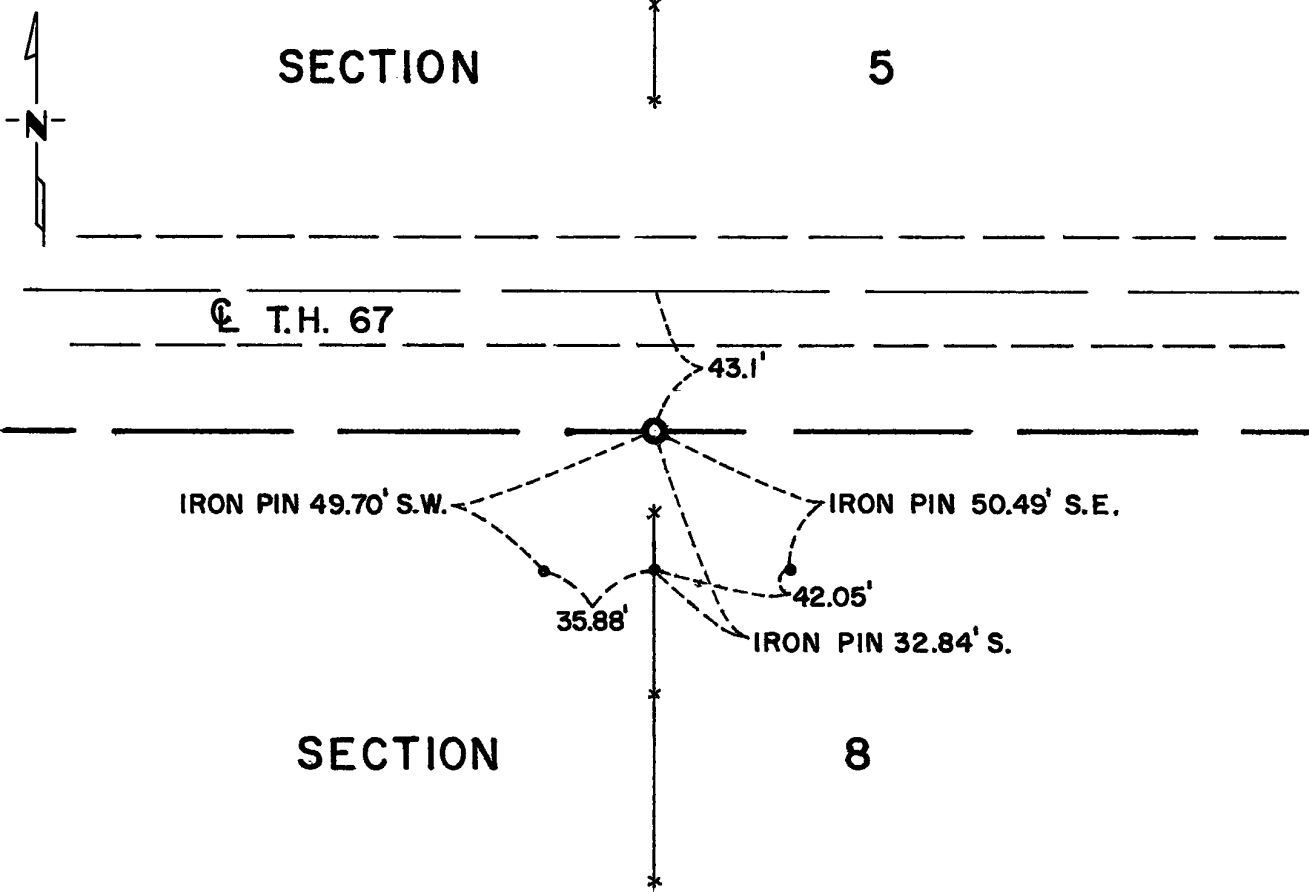
North Quarter Corner of Section 8, Township 115N, Range 42W, 5th P.M.

STATE OF MINNESOTA, County of Yellow Medicine

At the corner location shown on the sketch:

- On _____ found a _____
DATE
- left monument as found, lowered monument, removed monument (explain)
- On 7/13/76 placed a Minnesota Highway Department cast iron
DATE monument 43.1 feet South of Station 963+05.5.

SKETCH OF REFERENCE TIES



Statement of evidence relative to this corner location is on back of page.

I hereby certify that this document and the data contained herein was prepared by me or under my direct supervision.

Richard M. Knofczynski 1-17-77
SIGNATURE DATE

Registration No. 11526

- Land Surveyor, Professional Engineer
- County Surveyor, County Engineer

OFFICE OF THE REGISTER OF DEEDS

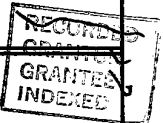
County of _____ COUNTY RECORDER
YELLOW MEDICINE COUNTY

I hereby certify that this document was filed in the Reg. of Deeds office at 11:05 A.M. on the 21 day of March A.D., 1972

Register of Deeds Norman J. Opdahl

By Kay Nordahl, Deputy

DOCUMENT NO. 168939



Statement of Evidence: North Quarter Cor., Sec. 8, Township 115N, Range 42W

The original Public Land Survey was run in 1864 and a post set in a mound with pits to mark the original corner.

In May, 1891, J. Peterman, County Surveyor, found government corner, placed field stone.

In 1929, the Minnesota Highway Department found the field stone.

In April, 1930, D. Mattson, Project Engineer, found large field stone and placed ties.

On June 30, 1976, the Minnesota Highway Department dug for the corner, but did not find it.

On July 13, 1976, the Minnesota Highway Department set the corner using information and ties from the right-of-way map and final grading plans. Top of monument is down 2" below surface.

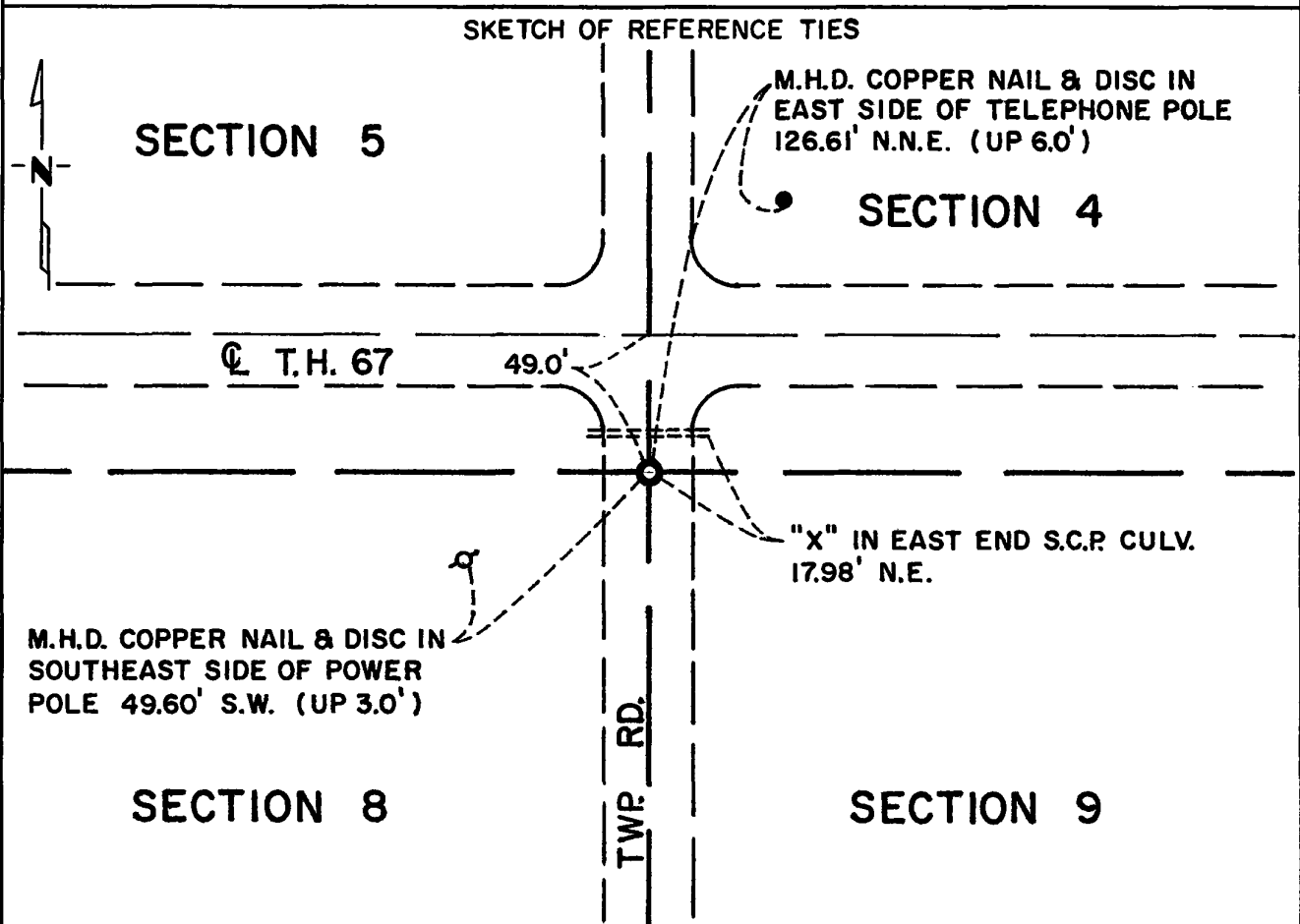
An analysis of the record data indicates the cast iron monument set by the Minnesota Department of Transportation is accepted as the location of the Public Land Survey corner.

CERTIFICATE OF LOCATION OF GOVERNMENT CORNER

Northeast Corner of Section 8, Township 115N, Range 42W, 5th P.M.
STATE OF MINNESOTA, County of Yellow Medicine

At the corner location shown on the sketch:

- On _____ found a _____
DATE
- left monument as found, lowered monument, removed monument (explain)
- On 7/13/76 placed a Minnesota Highway Department cast iron
DATE monument.



Statement of evidence relative to this corner location is on back of page.

I hereby certify that this document and the data contained herein was prepared by me or under my direct supervision.

Richard M. Hughes
SIGNATURE DATE 1-17-77

Registration No. 11526
 Land Surveyor, Professional Engineer
 County Surveyor, County Engineer

OFFICE OF THE REGISTER OF DEEDS
County of _____ COUNTY RECORDER
YELLOW MEDICINE COUNTY



I hereby certify that this document was filed in the Reg. of Deeds office at 11:00 A.M. on the 21 day of March A.D., 1977

Register of Deeds Norman J. Opdahl
By Kay Nordahl, Deputy
DOCUMENT NO. 168938

Statement of Evidence: Northeast Cor., Sec. 8, Township 115N, Range 42W

The original Public Land Survey was run in 1864 and a post set in a mound with pits to mark the original corner.

In May 1891, J. Peterman, County Surveyor, found government corner.

In 1901, John Norgaard found stake in government mound and placed a 6"x6"x24" Jasper Stone monument.

In 1929, the Minnesota Highway Department found the monument.

In April 1930, D. F. Mattson, Project Engineer, found the monument and placed ties.

In 1934, the County Highway Engineer found the monument and checked the above ties.

On June 30, 1976, the Minnesota Highway Department dug for the corner, but did not find it.

On July 13, 1976, the Minnesota Highway Department set the corner using information and ties from the right-of-way map and final grading plans.

An analysis of the record data indicates the cast iron monument set by the Minnesota Department of Transportation is accepted as the location of the Public Land Survey corner.

The stone found in 1934 was probably destroyed in road construction of 1965. The corner was re-established from 1929 survey data and perpetuates the location of corner marked by jasper stone set in 1901.

CERTIFICATE OF LOCATION OF GOVERNMENT CORNER

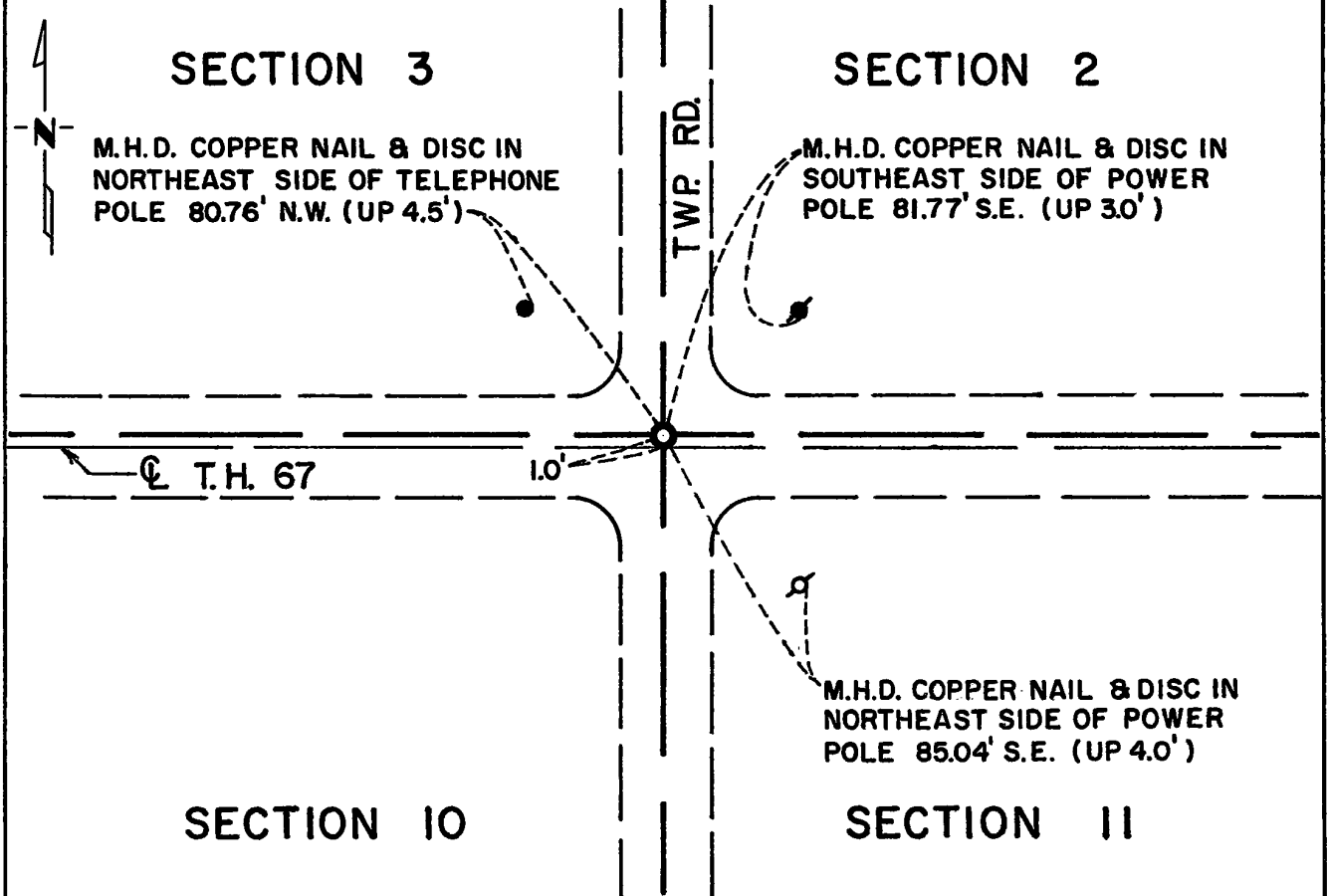
Northeast Corner of Section 10, Township 115N, Range 42W, 5th P.M.

STATE OF MINNESOTA, County of Yellow Medicine

At the corner location shown on the sketch:

- On _____ found a _____
DATE
- left monument as found, lowered monument, removed monument (explain)
- On 12/16/76 placed a Minnesota Highway Department cast iron
DATE
monument with brass plate stamped.

SKETCH OF REFERENCE TIES



Statement of evidence relative to this corner location is on back of page.

I hereby certify that this document and the data contained herein was prepared by me or under my direct supervision.

Richard M. Knofczynski 1-17-77
SIGNATURE DATE

Registration No. 11526

- Land Surveyor, Professional Engineer
- County Surveyor, County Engineer

OFFICE OF THE REGISTER OF DEEDS
County of _____
COUNTY RECORDER
YELLOW MEDICINE COUNTY



I hereby certify that this document was filed in the Reg. of Deeds office at 10:55 A.M. on the 21 day of March A.D., 1977

Register of Deeds Norman J. Opdahl
By Kay Nordahl, Deputy

DOCUMENT NO. 168937

Statement of Evidence: Northeast Cor., Sec. 10, Township 115N, Range 42W

The original Public Land Survey was run in 1864 and a post set in a mound with pits to mark the original corner.

In 1901, John Norgaard, County Surveyor, located corner as the center of roads said by local resident, James Paulson, to be the place where the government corner was before road grading was done. Placed a 6"x6"x24" cut Jasper Stone monument.

John Norgaard, County Surveyor, found the Jasper Stone monument in November 1916, 1919 and 1922 when ties were set.

In 1939, the Minnesota Highway Department found a Jasper Stone monument 1 foot north of centerline.

On December 16, 1976, the Minnesota Highway Department placed a cast iron monument using information and ties as shown on the right-of-way map and final grading plans. Top of monument is down 1" below surface.

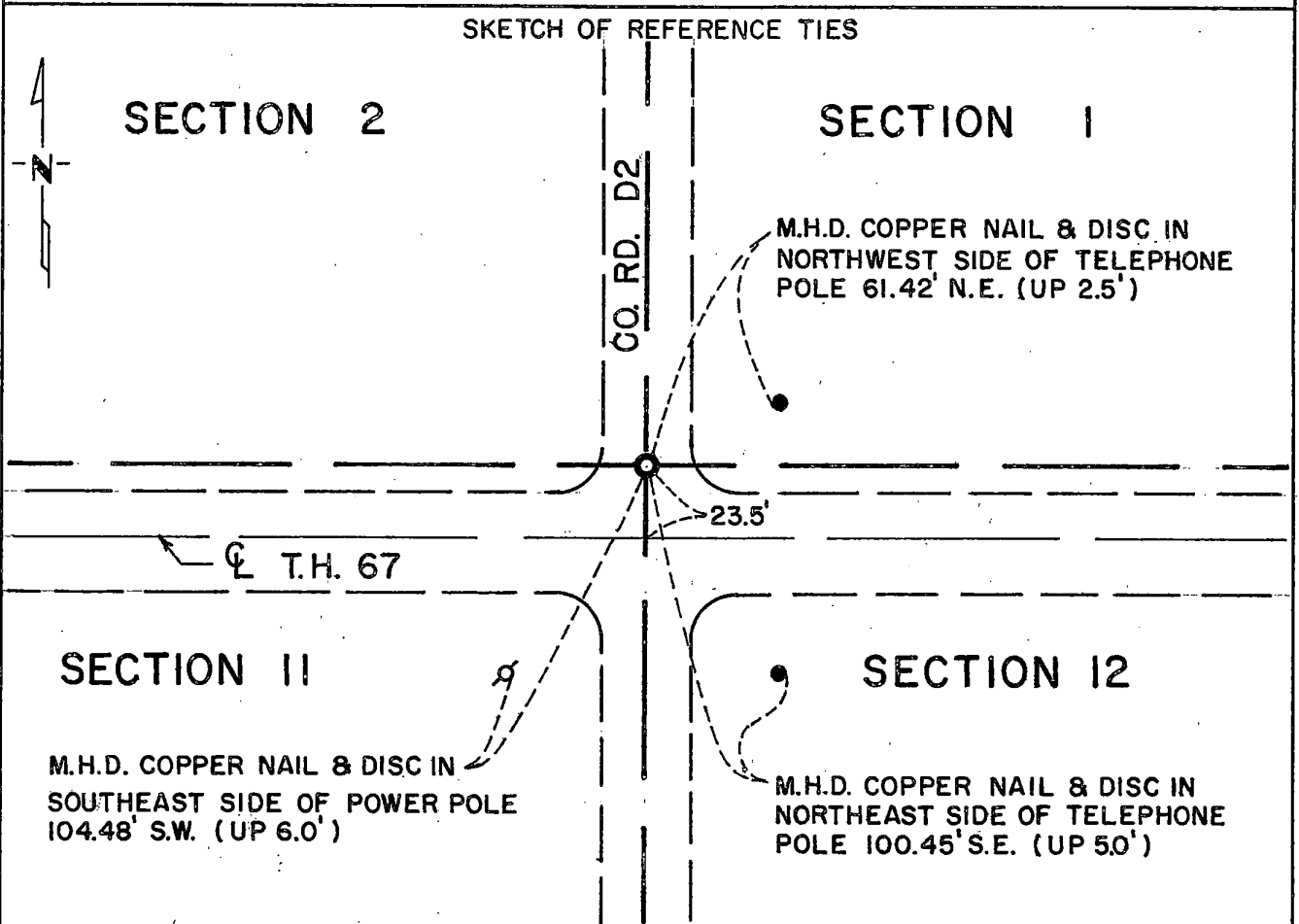
An analysis of the record data indicates the cast iron monument set by the Minnesota Department of Transportation is accepted as the location of the Public Land Survey corner.

CERTIFICATE OF LOCATION OF GOVERNMENT CORNER

Northeast Corner of Section 11, Township 115N, Range 42W, 5th P.M.
 STATE OF MINNESOTA, County of Yellow Medicine

At the corner location shown on the sketch:

- On 6/30/76 found a 6"x6"x24" cut jasper stone down 3' below surface on centerline north-south road and 23.5' north centerline TH 67.
 left monument as found, lowered monument, removed monument (explain)
- On 7/13/76 placed a Minnesota Highway Department cast iron monument down 2" below road surface.



Statement of evidence relative to this corner location is on back of page.

I hereby certify that this document and the data contained herein was prepared by me or under my direct supervision.

Richard M. Zubczynski 1-17-77
SIGNATURE DATE

Registration No. 11526

- Land Surveyor, Professional Engineer
- County Surveyor, County Engineer

OFFICE OF THE REGISTER OF DEEDS
 COUNTY RECORDER
 County of YELLOW MEDICINE COUNTY

RECORDED
 GRANTED
 GRANTED
 INDEXED

I hereby certify that this document was filed in the Reg. of Deeds office at 10:50 A.M. on the 21 day of March A.D., 19 77

Register of Deeds Norman J. Opsahl

By Kary Nerdahl, Deputy

DOCUMENT NO. 168936

Statement of Evidence: Northeast Cor., Sec. 11, Township 115N, Range 42W

The original Public Land Survey was run in 1864 and a post set in a mound and pits to mark the corner.

In 1901, John Norgaard, County Surveyor, found stake and stone in government mound and placed a 6"x6"x24" cut Jasper Stone.

In August 1909, October 1913, 1919, 1922 and 1930, John Norgaard, County Surveyor, found the Jasper Stone monument.

In 1934, County Highway Engineer found the monument and placed ties.

In 1939, the Minnesota Highway Department found a Jasper Stone monument in location as shown on right-of-way map.

On June 30, 1976, the Minnesota Highway Department found the Jasper Stone monument 23.5 feet north on centerline T.H. 67 down 3' below road surface.

On July 13, 1976, the Minnesota Highway Department placed a cast iron monument over the Jasper Stone monument. Top of monument is down 2" below surface.

An analysis of the record data dating to the original monument provides a continuous chain of perpetuation of the original Public Land Survey corner.

CERTIFICATE OF LOCATION OF GOVERNMENT CORNER

East Quarter Corner of Section 12, Township 115N, Range 42W, 5th P.M.
STATE OF MINNESOTA, County of Yellow Medicine

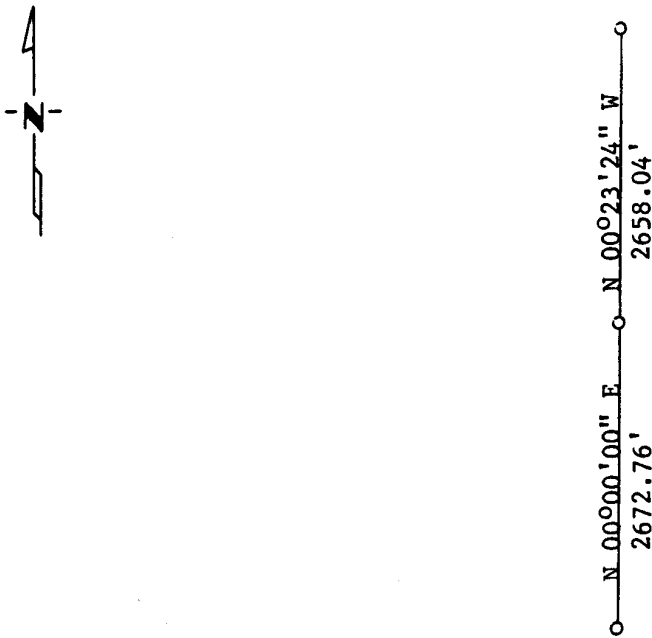
At the corner location shown on the sketch:

On 5/03/88 found a Field stone in center of road and in line with
DATE
hedge to west, NO TIES, See survey 88-915.

left monument as found, lowered monument, removed monument (explain)

On 5/030/88 placed a 1 1/2 inch iron pipe with seal on top of it.
DATE

SKETCH OF REFERENCE TIES



Statement of evidence relative to this corner location is on back of page.

I hereby certify that this document and the data contained herein was prepared by me or under my direct supervision.

Lyle E. Mooney 1-24-1989
SIGNATURE DATE

Registration No. 11943
 Land Surveyor, Professional Engineer
 County Surveyor, County Engineer

OFFICE OF THE COUNTY RECORDER
County of Yellow Medicine

I hereby certify that this document was filed in the Co. Recorders office at 2:45 P.M. on the 1 day of May A.D., 1990

County Recorder Norman Opdell

By _____, Deputy

DOCUMENT NO. 197340

Statement of Evidence:

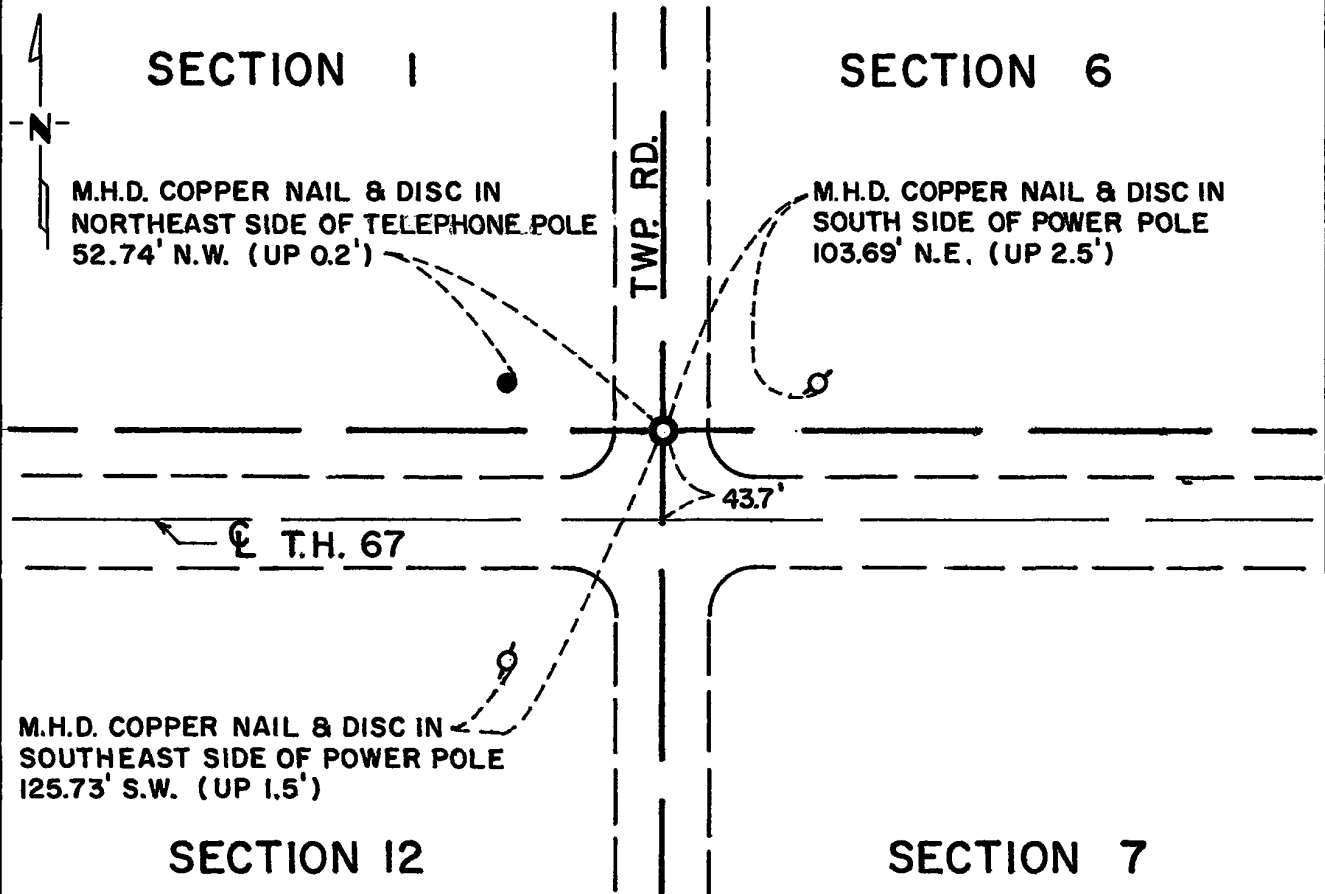
CERTIFICATE OF LOCATION OF GOVERNMENT CORNER

Northeast Corner of Section 12, Township 115N, Range 42W, 5th P.M.
STATE OF MINNESOTA, County of Yellow Medicine

At the corner location shown on the sketch:

- On _____ found a _____
DATE
- left monument as found, lowered monument, removed monument (explain)
- On 7/14/76 placed a Minnesota Highway Department cast iron
DATE monument 43.7 feet left of Sta. 158+86.3.

SKETCH OF REFERENCE TIES



Statement of evidence relative to this corner location is on back of page.

I hereby certify that this document and the data contained herein was prepared by me or under my direct supervision.

Richard M. Kozlowski 1-17-77
SIGNATURE DATE

Registration No. 11526

- Land Surveyor, Professional Engineer
- County Surveyor, County Engineer

OFFICE OF THE REGISTER OF DEEDS
COUNTY RECORDER
County of YELLOW MEDICINE COUNTY



I hereby certify that this document was filed in the Reg. of Deeds office at 10:45 A.M. on the 21 day of March A.D., 1977

Register of Deeds Norman J. Opdahl

By Kary Nordahl, Deputy

DOCUMENT NO. 168935

Statement of Evidence: Northeast Cor., Sec. 12, Township 115N, Range 42W

The original Public Land Survey for township lines was run in 1858 and a post set with deposit of coal, made mound, trenches and pits to mark the corner.

In 1901, John Norgaard, County Surveyor, found a stone, stake and iron bolt set by adjacent landowners and placed a 6"x6"x24" cut Jasper Stone.

In August 1909, John Norgaard, County Surveyor, found the Jasper Stone monument.

In October 1913, John Norgaard, County Surveyor, found the Jasper Stone monument.

In 1939, the Minnesota Highway Department found the Jasper Stone monument in location as shown on right-of-way map.

On June 30, 1976, the Minnesota Highway Department dug in location as shown on right-of-way and grading plans. No monument was found.

On July 14, 1976, the Minnesota Highway Department placed a cast iron monument using information and ties as shown on the right-of-way map and final grading plans. Top of monument is down 2" below surface.

An analysis of the record data indicates the cast iron monument set by the Minnesota Department of Transportation is accepted as the location of the Public Land Survey corner.

The stone monument found in 1939 was removed in road construction of 1940. The corner was re-established from 1939 survey data and perpetuates the location for the corner as marked by the jasper stone set in 1901.

CERTIFICATE OF LOCATION OF GOVERNMENT CORNER

NE COR NW1/4, NW1/4 of Section 13, Township 115, Range 42, 5TH P.M.

STATE OF MINNESOTA, County of YELLOW MEDICINE

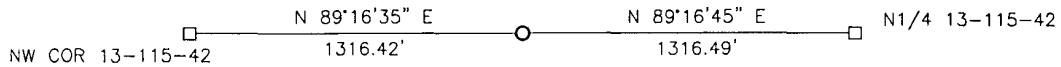
At the corner location shown on the sketch:

On 04-06-2017 found a FIELD STONE
DATE

left monument as found, lowered monument, removed monument (explain)

On 04-06-2017 placed a 5/8" IRON WITH SEAL #43844 OVER STONE
DATE

SKETCH OF REFERENCE TIES



X
X
X
X

Minnesota State Plane Coordinate
System Yellow Medicine County Datum
NAD83 (1996)

N: 185499.119
E: 509373.578

Statement of evidence relative to this corner location is on back of page.

I hereby certify that this document and the data contained herein was prepared by me or under my direct supervision.

[Signature] 2/26/18
SIGNATURE DATE

Registration No. 43844

Land Surveyor, Professional Engineer
 County Surveyor, County Engineer

Doc# 268109 Fee: \$0.00 2 Pages

Property & Public Services
Property Records Division
Yellow Medicine County, Minnesota
I hereby certify that the within instrument was filed on March 28, 2018 at 12:10 PM

Janel Timm, Yellow Medicine County Recorder

By Kelly Kruger Deputy

Statement of Evidence

In 1864, C.E. Davis and J.W. Webb, Jr. did the original subdivision of the township.

In 1913, John Norgaard, County Surveyor, set a stone at the corner.

On April 6, 2017, Bueltel-Moseng Land Surveying dug with a backhoe and found a field stone. We set a 5/8" iron with seal #43844 on the north side of the stone. We also set a 5/8" iron with seal #43844 over it.

CERTIFICATE OF LOCATION OF GOVERNMENT CORNER

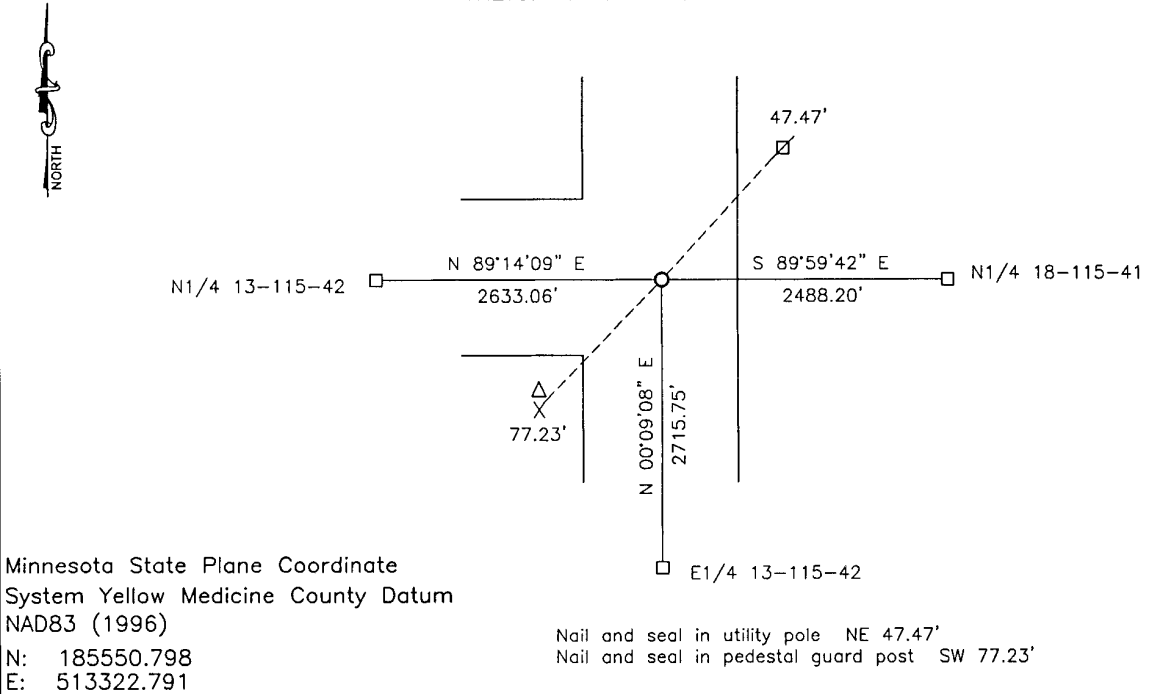
NORTHEAST Corner of Section 13, Township 115, Range 42, 5TH P.M.

STATE OF MINNESOTA, County of YELLOW MEDICINE

At the corner location shown on the sketch:

- On _____ found a _____
DATE
- left monument as found, lowered monument, removed monument (explain)
- On 04-06-2017 placed a 5/8" IRON WITH SEAL #43844.
DATE

SKETCH OF REFERENCE TIES



Statement of evidence relative to this corner location is on back of page.

I hereby certify that this document and the data contained herein was prepared by me or under my direct supervision.

[Signature] 2/26/18
SIGNATURE DATE

Registration No. 43844

- Land Surveyor, Professional Engineer
 County Surveyor, County Engineer

Doc# 268108 Fee: \$0.00 2 Pages

Property & Public Services
 Property Records Division
 Yellow Medicine County, Minnesota
 I hereby certify that the within instrument was filed on March 28, 2018 at 12:05 PM

Janel Timm, Yellow Medicine County Recorder

By *[Signature]* Deputy

Statement of Evidence

In 1858, W.J. Neely did the original survey of the east line of the township.

In 1913, John Norgaard, County Surveyor, set a stone at the corner.

On April 29, 1988, Moseng Land Surveying dug with a backhoe and found a granite stone at the corner. They set a 5/8" iron with seal #11943 over the stone.

On April 6, 2017, Bueltel-Moseng Land Surveying searched for the iron set by Moseng Land Surveying but did not find it. We used the ties set by Moseng Land Surveying to set a 5/8" iron with seal #43844 in its place.

CERTIFICATE OF LOCATION OF GOVERNMENT CORNER

EAST QUARTER Corner of Section 13, Township 115, Range 42, 5TH P.M.

STATE OF MINNESOTA, County of YELLOW MEDICINE

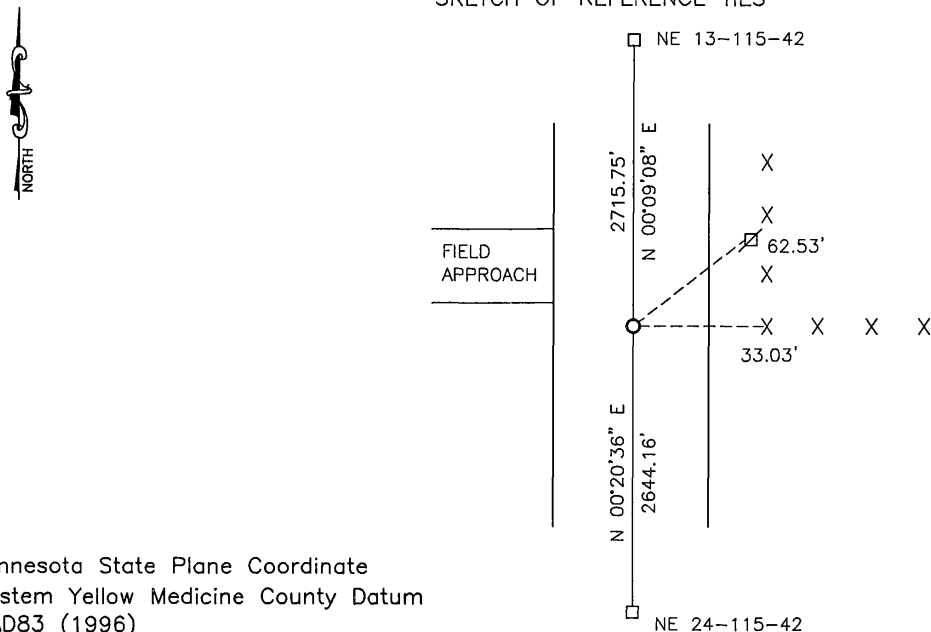
At the corner location shown on the sketch:

On 04-06-2017 found a FIELD STONE
DATE

left monument as found, lowered monument, removed monument (explain)

On 04-06-2017 placed a 5/8" IRON WITH SEAL #43844 OVER STONE
DATE

SKETCH OF REFERENCE TIES



Minnesota State Plane Coordinate
 System Yellow Medicine County Datum
 NAD83 (1996)

N: 182835.054
 E: 513315.570

Nail and survey marker in utility pole NE 62.53'
 Nail and survey marker in corner fence post East 33.03'

Statement of evidence relative to this corner location is on back of page.

I hereby certify that this document and the data contained herein was prepared by me or under my direct supervision.

[Signature] 2/26/18
SIGNATURE DATE

Registration No. 43844

Land Surveyor, Professional Engineer
 County Surveyor, County Engineer

Doc# 268107 Fee: \$0.00 2 Pages

Property & Public Services
 Property Records Division
 Yellow Medicine County, Minnesota
 I hereby certify that the within instrument was filed on March 28, 2018 at 11:20 AM

Janel Timm, Yellow Medicine County Recorder

By [Signature] Deputy

Statement of Evidence

In 1858, W.J. Neely did the original survey of the east line of the township.

In 1930, John Norgaard, County Surveyor, set a stone at the corner.

On April 6, 2017, Bueltel-Moseng Land Surveying dug with a backhoe and found a field stone. We set a 5/8" iron with seal #43844 on the north side of the stone. We also set a 5/8" iron with seal #43844 over it.

CERTIFICATE OF LOCATION OF GOVERNMENT CORNER

NORTH QUARTER Corner of Section 13, Township 115, Range 42, 5TH P.M.

STATE OF MINNESOTA, County of YELLOW MEDICINE

At the corner location shown on the sketch:

On 04-06-2017 found a FIELD STONE

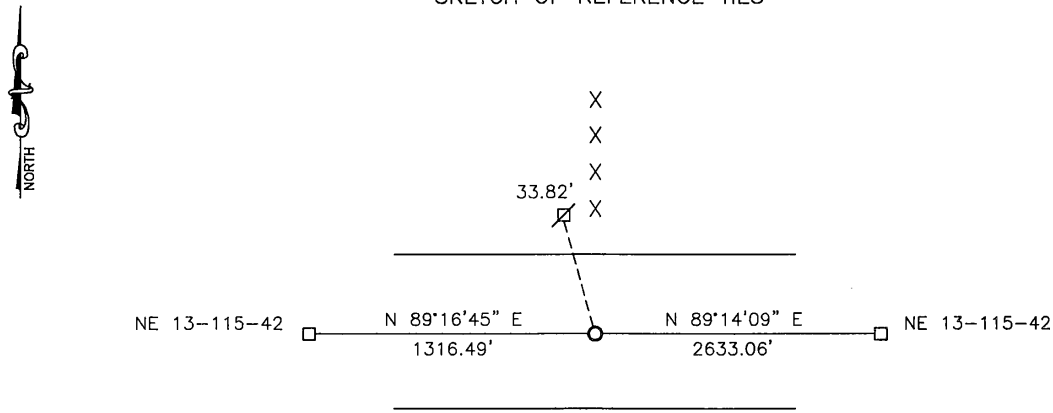
DATE

left monument as found, lowered monument, removed monument (explain)

On 04-06-2017 placed a 5/8" IRON WITH SEAL #43844 OVER STONE

DATE

SKETCH OF REFERENCE TIES



Minnesota State Plane Coordinate
System Yellow Medicine County Datum
NAD83 (1996)

N: 185515.683
E: 510689.968

Nail and bottle cap in utility pole NW 33.82'

Statement of evidence relative to this corner location is on back of page.

I hereby certify that this document and the data contained herein was prepared by me or under my direct supervision.

[Signature] 2/26/18
SIGNATURE DATE

Registration No. 43844

- Land Surveyor, Professional Engineer
 County Surveyor, County Engineer

Doc# 268106 Fee: \$0.00 2 Pages

**Property & Public Services
Property Records Division
Yellow Medicine County, Minnesota**
I hereby certify that the within instrument was filed on March 28, 2018 at 11:15 AM

Janel Timm, Yellow Medicine County Recorder

By [Signature] Deputy

Statement of Evidence

In 1864, C.E. Davis and J.W. Webb, Jr. did the original subdivision of the township.

In 1913, John Norgaard, County Surveyor set a stone at the corner.

On April 6, 2017, Bueltel-Moseng Land Surveying dug with a backhoe and found a field stone. We set a 5/8" iron with seal #43844 on the east side of the stone. We also set a 5/8" iron with seal #43844 over it.

CERTIFICATE OF LOCATION OF GOVERNMENT CORNER

Northeast Corner of Section 13, Township 115N, Range 42W, 5th P.M.

STATE OF MINNESOTA, County of Yellow Medicine

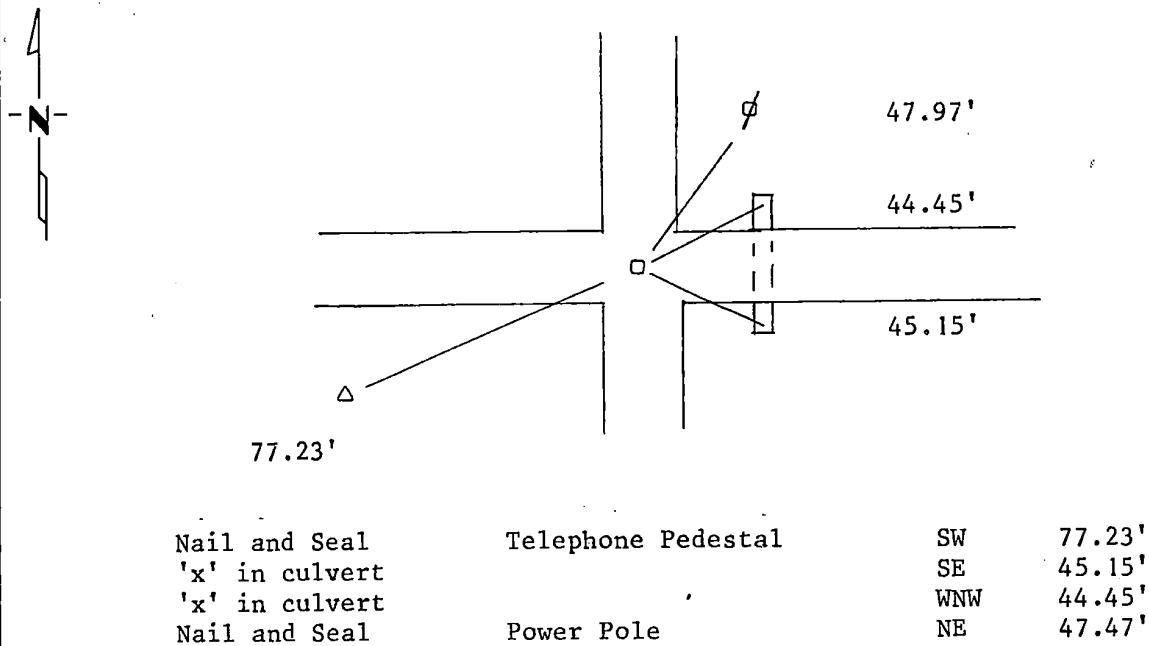
At the corner location shown on the sketch:

On 4/29/88 found a Granite Stone
DATE

left monument as found, lowered monument, removed monument (explain)

On 4/29/88 placed a 5/8" rered on top of the granite stone
DATE

SKETCH OF REFERENCE TIES



Statement of evidence relative to this corner location is on back of page.

I hereby certify that this document and the data contained herein was prepared by me or under my direct supervision.

Luyle P. Moring 5/18/88
SIGNATURE DATE

Registration No. 111943

- Land Surveyor, Professional Engineer
 County Surveyor, County Engineer

OFFICE OF THE COUNTY RECORDER
 County of Yellow Medicine

I hereby certify that this document was filed in the Co. Recorders office at 10:05 A.M. on the 25 day of January A.D., 1989

County Recorder Norman J. Opdahl

By Kay Nordahl, Deputy

DOCUMENT NO. 194566

Statement of Evidence:

On April 29, 1988 we dug with a backhoe and found a granite stone 16" deep, we then set a 5/8" rerod on top of it flush with the road surface

CERTIFICATE OF LOCATION OF GOVERNMENT CORNER

NORTHEAST Corner of Section 14, Township 115, Range 42, 5TH P.M.

STATE OF MINNESOTA, County of YELLOW MEDICINE

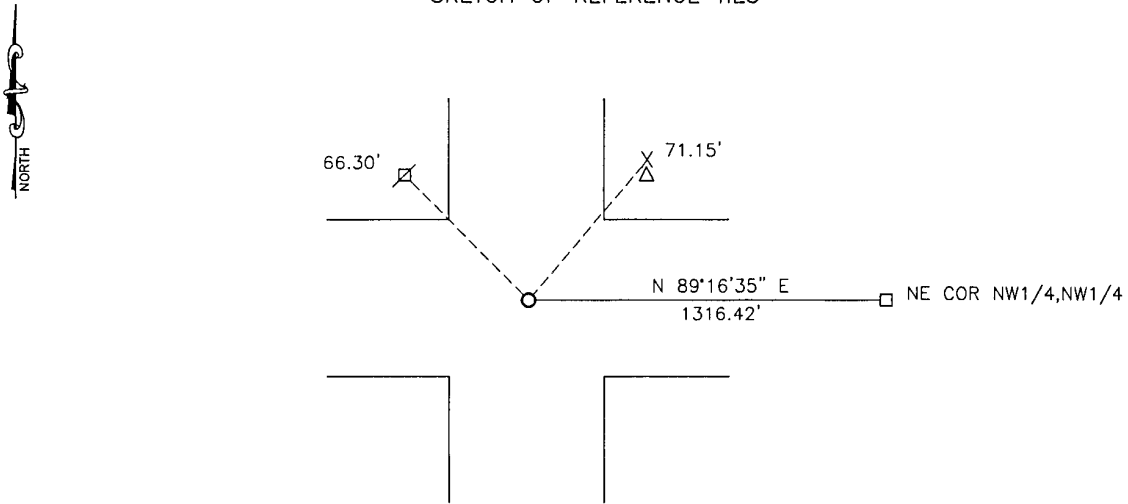
At the corner location shown on the sketch:

On 04-06-2017 found a COUNTY BRIDGE SPIKE
DATE

left monument as found, lowered monument, removed monument (explain)

On 04-06-2017 placed a 5/8" IRON WITH SEAL #43844
DATE

SKETCH OF REFERENCE TIES



Minnesota State Plane Coordinate
System Yellow Medicine County Datum
NAD83 (1996)

N: 185482.491
E: 508057.259

Nail and bottle cap in utility pole NW 66.30'
Nail and bottle cap in pedestal guard post NE 71.15'

Statement of evidence relative to this corner location is on back of page.

I hereby certify that this document and the data contained herein was prepared by me or under my direct supervision.

[Signature] 2/26/18
SIGNATURE DATE

Registration No. 43844

Land Surveyor, Professional Engineer
 County Surveyor, County Engineer

Doc# 268110 Fee: \$0.00 2 Pages

Property & Public Services
Property Records Division
Yellow Medicine County, Minnesota
I hereby certify that the within instrument was filed on March 28, 2018 at 12:15 PM

Janel Timm, Yellow Medicine County Recorder

By [Signature] Deputy

Statement of Evidence

In 1864, C.E. Davis and J.W. Web, Jr. did the original subdivision of the township.

No date, the Yellow Medicine County Highway Department found an iron pipe over stone at the corner and set a bridge spike over it.

On April 6, 2017, Bueltel-Moseng Land Surveying found a county bridge spike over a stone. We removed the bridge spike and set a 5/8" iron with seal #43844 in its place.

CERTIFICATE OF LOCATION OF GOVERNMENT CORNER

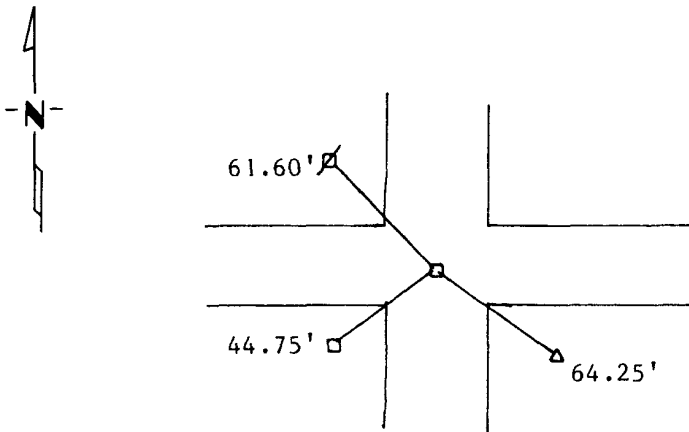
NORTH EAST Corner of Section 18, Township 115, Range 42, 5th P.M.

STATE OF MINNESOTA, County of YELLOW MEDICINE

At the corner location shown on the sketch:

- On 10/15/1990 found a 6x6" cut Granite stone
DATE
- left monument as found, lowered monument, removed monument (explain)
- On 10/15/1990 placed a Iron pipe on top of it.
DATE

SKETCH OF REFERENCE TIES



Nail and seal in power pole NW. 61.60'
 1 1/2" iron pipe SW. 44.75'
 Top center of Telephone pedistal SE. 64.25'

Statement of evidence relative to this corner location is on back of page.

I hereby certify that this document and the data contained herein was prepared by me or under my direct supervision.

Leyle E. Mooney 10-16-91
SIGNATURE DATE

Registration No. 119430
 Land Surveyor, Professional Engineer
 County Surveyor, County Engineer

OFFICE OF THE COUNTY RECORDER

County of Yellow Medicine

I hereby certify that this document was filed in the Co. Recorders office at 3:10 P.M. on the 2nd day of February A.D., 1995

County Recorder Norman J. Opdahl

By Kay Nordahl, Deputy

DOCUMENT NO. 208537

Statement of Evidence:

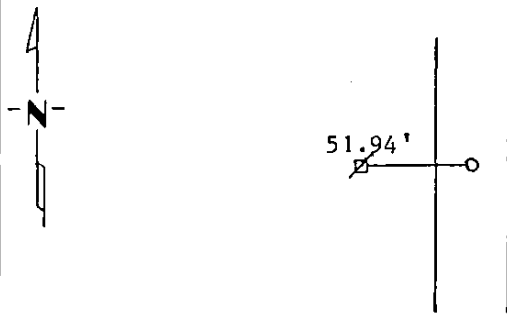
CERTIFICATE OF LOCATION OF GOVERNMENT CORNER

EAST QUARTER Corner of Section 18, Township 115, Range 42, 5th P.M.
STATE OF MINNESOTA, County of YELLOW MEDICINE

At the corner location shown on the sketch:

- On OCT. 25/1990 found a dug and found nothing see back of this sheet
DATE
- left monument as found, lowered monument, removed monument (explain)
- On OCT. 25/1990 placed a 1" iron pipe on line and midway
DATE

SKETCH OF REFERENCE TIES



Nail and seal in power pole W. 51.94'

Statement of evidence relative to this corner location is on back of page.

I hereby certify that this document and the data contained herein was prepared by me or under my direct supervision.

Kyle C. Mooney July 14, 1992
SIGNATURE DATE

Registration No. 1194
 Land Surveyor, Professional Engineer
 County Surveyor, County Engineer

OFFICE OF THE COUNTY RECORDER
County of Yellow Medicine

I hereby certify that this document was filed in the Co. Recorders office at 9:10 A.M. on the 8th day of June A.D., 19 93

County Recorder Norman J. Opdahl
By Norman J. Opdahl, Deputy

DOCUMENT NO. 204596

Statement of Evidence:

On October 25, 1990 we dug for the corner with a backhoe operated by Steve Blom for Bonnam Land Surveying and found nothing . I set the Pipe midway and on line.

CERTIFICATE OF LOCATION OF GOVERNMENT CORNER

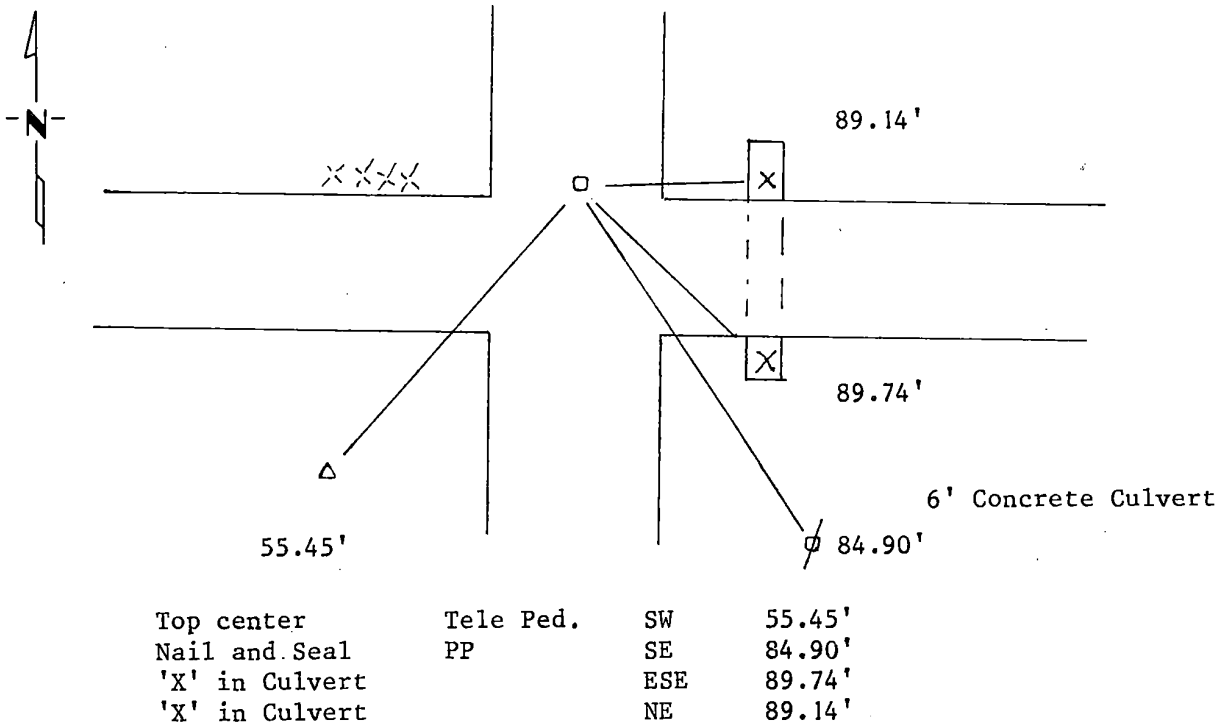
Northeast Corner of Section 18., Township 115N, Range 42W, 5th P.M.

STATE OF MINNESOTA, County of Yellow Medicine

At the corner location shown on the sketch:

- On 4/29/88 found a 6" X 6" granite stone
DATE
- left monument as found, lowered monument, removed monument (explain)
- On 4/29/88 placed a rerod on top of the stone, flush with the surface
DATE

SKETCH OF REFERENCE TIES



Statement of evidence relative to this corner location is on back of page.

I hereby certify that this document and the data contained herein was prepared by me or under my direct supervision.

Aule E. Mosing 5/20/88
SIGNATURE DATE

Registration No. 111943
 Land Surveyor, Professional Engineer
 County Surveyor, County Engineer

OFFICE OF THE COUNTY RECORDER
County of Yellow Medicine

I hereby certify that this document was filed in the Co. Recorders office at 10:10 A.M. on the 25 day of January A.D., 1989

County Recorder Norman J. Opdahl
By Kay Nordahl, Deputy

DOCUMENT NO. **194567**

Statement of Evidence:

On April 29, 1988 we dug with a backhoe and found a
6" X 6" Granite Stone, we then set a rerod on top of it
flush with the road surface.

CERTIFICATE OF LOCATION OF GOVERNMENT CORNER

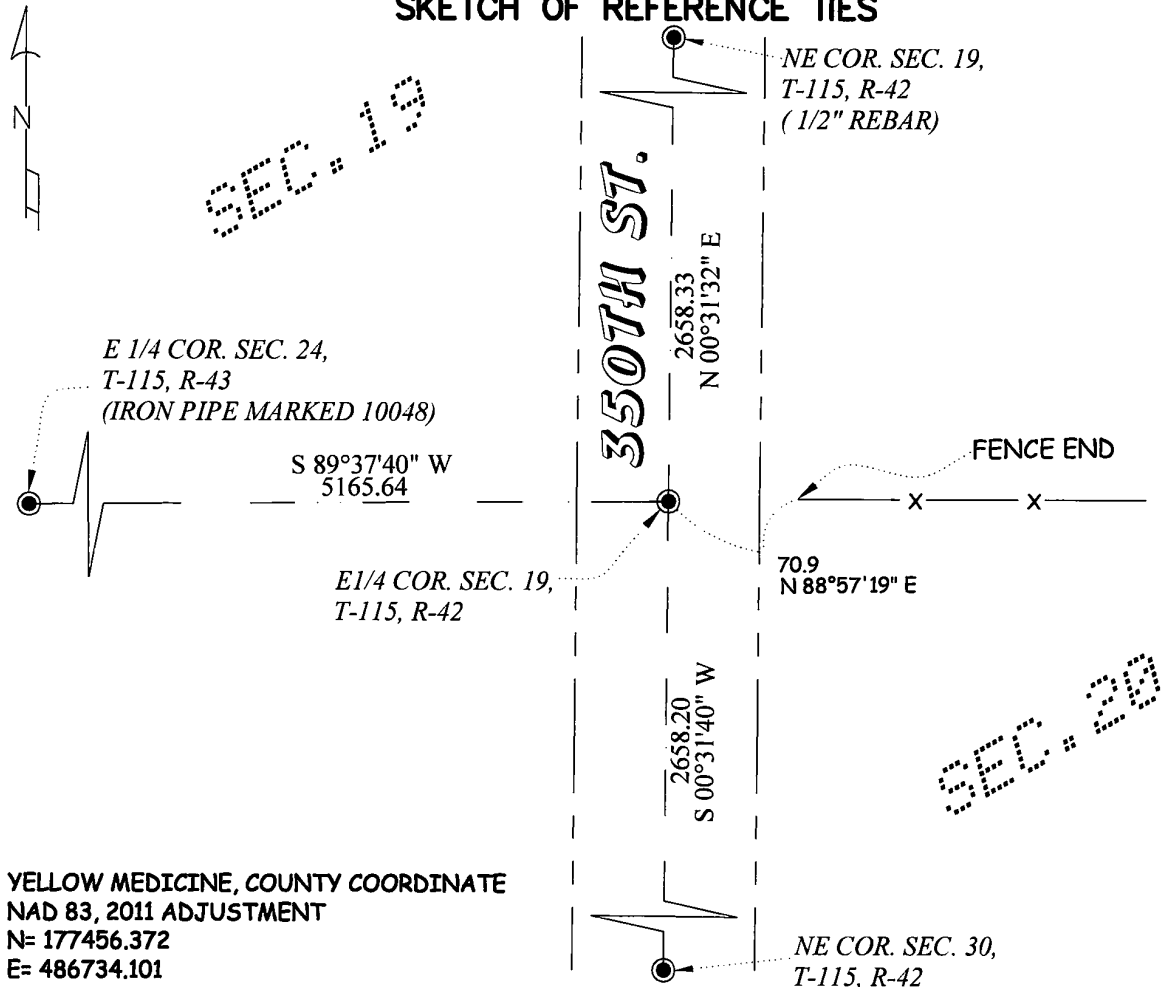
EAST QUARTER Corner of Section 19, Township 115, Range 42, 5TH P.M.

STATE OF MINNESOTA, County of YELLOW MEDICINE

At the corner location shown on the sketch:

- On _____ found a _____
Date
- left monument as found, lowered monument, removed monument (explain)
- On 2-9-2023 placed a 1/2" Iron Pipe, with Cap #42300
Date

SKETCH OF REFERENCE TIES



Statement of evidence relative to this corner location is on back of page.

I hereby certify that this document and the data contained herein was prepared by me or under my direct supervision.

[Signature]
Signature

02-20-2023
Date

Registration No. 42300

- Land Surveyor Professional Engineer
- County Surveyor County Engineer

Doc# 279680 Fee: \$0.00 2 Pages

Property & Public Services
Property Records Division
Yellow Medicine County, Minnesota
I hereby certify that the within instrument was filed on February 27, 2023 at 1:00 PM

Janel Timm, Yellow Medicine County Recorder

By Marit Nordang Deputy

Statement of Evidence:

East Quarter Corner of Section 19, Township 115, Range 42, Yellow Medicine County, Minnesota.

October 1, 1864 - The original government survey was performed by C.E. Davis & J.W. Webb Jr.

April 23 & 24, 1959 - U.S. Fish and Wildlife Service conducted a survey in Section 19. Their field notes indicate that they set a spike at the centerline of a North-South Road and a fence line to the East and West. They give a distance of 2658.2 feet to the Northeast and Southeast corners of Section 19.

February 9, 2023 - O'Malley & Kron Land Surveyors, Inc performed a survey in Section 19. The corner location was computed based on the U.S. Fish and Wildlife survey information and surrounding corners that were found. The computed location was searched but no monument was found. The computed location was accepted as the corner location. A new monument was placed and new ties were made.

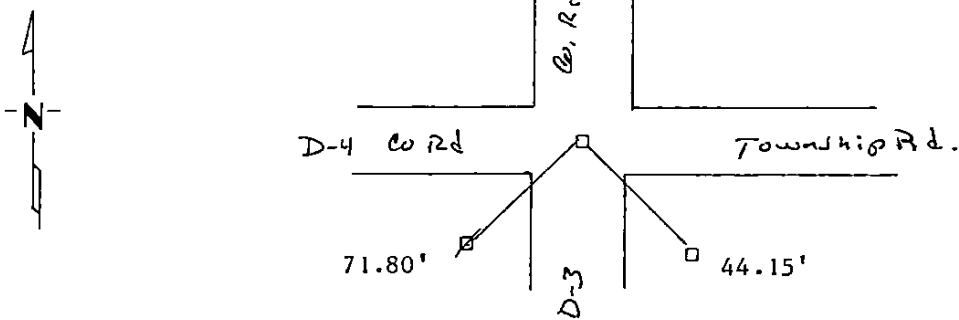
CERTIFICATE OF LOCATION OF GOVERNMENT CORNER

NORTHEAST Corner of Section 19, Township 115, Range 42, 5th P.M.
STATE OF MINNESOTA, County of YELLOW MEDICINE

At the corner location shown on the sketch:

- On OCT. 15/1990 found a 6x6" Granite stone 18" down
DATE
- left monument as found, lowered monument, removed monument (explain)
- On OCT. 15/1990 placed a 1" iron pipe w/seal on top of stone.
DATE

SKETCH OF REFERENCE TIES



Nail and seal in power pole SW. 71.80'
Bent 1 1/2" iron pipe SE. 44.15'

Statement of evidence relative to this corner location is on back of page.

I hereby certify that this document and the data contained herein was prepared by me or under my direct supervision.

Ray E. Mooney Jan 13, 1997
SIGNATURE DATE

Registration No. 11943
 Land Surveyor, Professional Engineer
 County Surveyor, County Engineer

OFFICE OF THE COUNTY RECORDER

County of Yellow Medicine

I hereby certify that this document was filed in the Co. Recorders office at 9:20 A.M. on the 8th day of June A.D., 19 93

County Recorder Norman J. Opdahl

By Norman J. Opdahl Deputy

DOCUMENT NO. 204598

Statement of Evidence:

Original Survey done by C. Edie Rain Sept 29, 1864

John nordgarrd resurveyed Yellow Med. County setting
Grainite Stones for all the Section Corners early 1900's

Highway department found the stone and set a iron pipe
45 feet SW and SE. as witness corners

I found one of the pipes dug and found the Stone.

CERTIFICATE OF LOCATION OF GOVERNMENT CORNER

NORTH QUARTER Corner of Section 19, Township 115, Range 42, 5th P.M.

STATE OF MINNESOTA, County of YELLOW MEDICINE

At the corner location shown on the sketch:

- On OCT.25/1990 found a feild stone in line with corner post to south
DATE
- left monument as found, lowered monument, removed monument (explain)
- On OCT.25/1990 placed a 1" iron pipe w/seal on top of stone.
DATE

SKETCH OF REFERENCE TIES



Nail and seal in top of wooden post S. 55.90'

Statement of evidence relative to this corner location is on back of page.

I hereby certify that this document and the data contained herein was prepared by me or under my direct supervision.

Ray E. Moser Jan 13, 1992
SIGNATURE DATE

Registration No. 119430

- Land Surveyor, Professional Engineer
- County Surveyor, County Engineer

OFFICE OF THE COUNTY RECORDER
County of Yellow Medicine

I hereby certify that this document was filed in the Co. Recorders office at 9:15 A.M. on the 8th day of June A.D., 1993.

County Recorder Norman J. Opdahl

By Norman J. Opdahl Deputy

DOCUMENT NO. 204597

Statement of Evidence:

I found no record of the corner in the Court House or Highway Department.

I dug with a back hoe and found a field stone in line with fence to the South.

I set a iron pipe with seal at road surface.

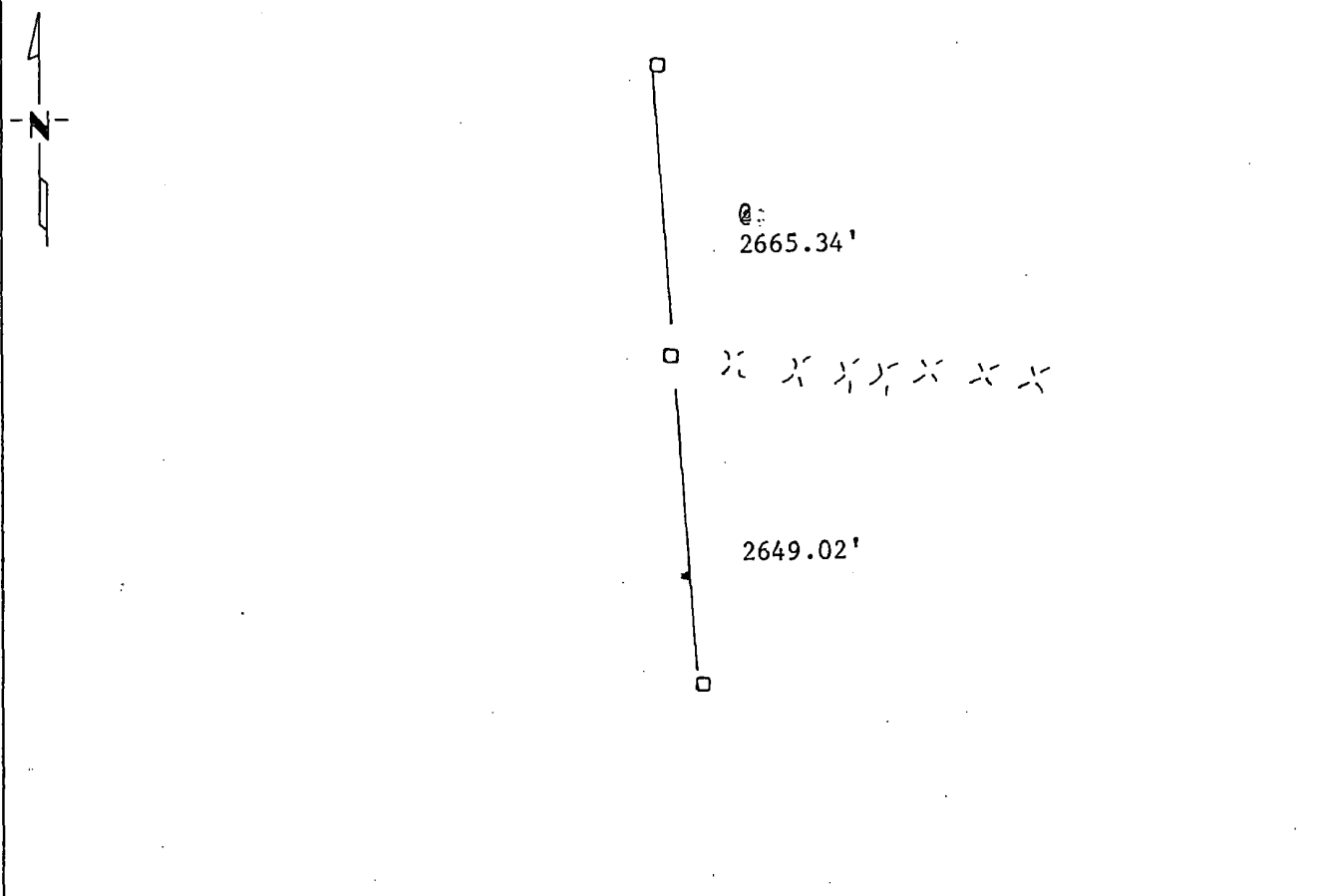
CERTIFICATE OF LOCATION OF GOVERNMENT CORNER

East 1/4 Corner of Section 23, Township 115N, Range 42W, 5th P.M.
STATE OF MINNESOTA, County of Yellow Medicine

At the corner location shown on the sketch:

- On _____ found a _____
DATE
- left monument as found, lowered monument, removed monument (explain)
- On 4/29/88 placed a 1 1/2" Iron Pipe for the section corner
DATE

SKETCH OF REFERENCE TIES



Statement of evidence relative to this corner location is on back of page.

I hereby certify that this document and the data contained herein was prepared by me or under my direct supervision.

Regis E. Mooney 5/20/88
SIGNATURE DATE
Registration No. 111943

- Land Surveyor, Professional Engineer
- County Surveyor, County Engineer

OFFICE OF THE COUNTY RECORDER
County of Yellow Medicine

I hereby certify that this document was filed in the Co. Recorders office at 10:20 A.M. on the 25 day of January A.D., 1989

County Recorder Norman J. Opdahl

By Kay Nordahl, Deputy

DOCUMENT NO. 194569

Statement of Evidence:

On April 29, 1988 we placed a 1 $\frac{1}{4}$ " Iron Pipe for the ~~section~~^{quarter} corner. We placed the corner on line with the section corners. It is in line with the fence to the east.

CERTIFICATE OF LOCATION OF GOVERNMENT CORNER

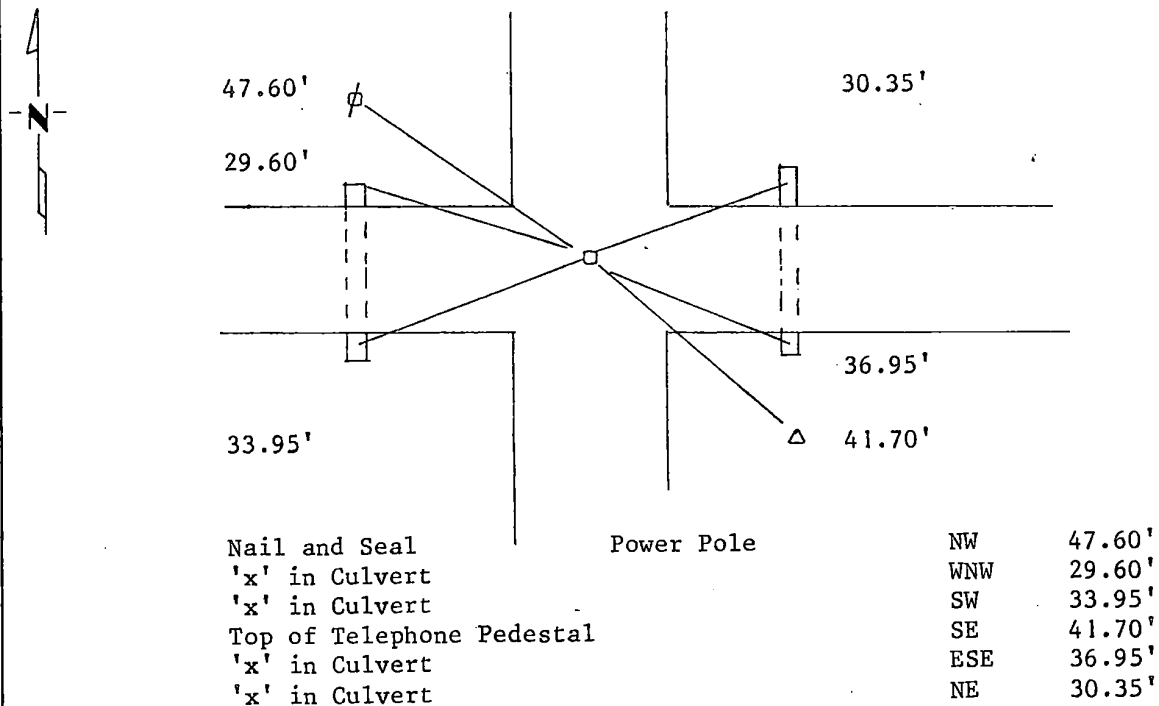
Northeast Corner of Section 23, Township 115N, Range 42W, 5th P.M.

STATE OF MINNESOTA, County of Yellow Medicine

At the corner location shown on the sketch:

- On 4/29/88 found a 6" X 6" X 18" Granite Stone with a lathe along
DATE side of it
- left monument as found, lowered monument, removed monument (explain)
- On 4/29/88 placed a 1 1/4" Iron Pipe with seal at Road Surface
DATE

SKETCH OF REFERENCE TIES



Statement of evidence relative to this corner location is on back of page.

I hereby certify that this document and the data contained herein was prepared by me or under my direct supervision.

Lytle E. Mooring 5-11-88
SIGNATURE DATE

Registration No. 111943

- Land Surveyor, Professional Engineer
- County Surveyor, County Engineer

OFFICE OF THE COUNTY RECORDER

County of Yellow Medicine

I hereby certify that this document was filed in the Co. Recorders office at 10:15 A.M. on the 25 day of January A.D., 1989

County Recorder Norman J. Opdahl

By Kay Nordahl, Deputy

DOCUMENT NO. 194568

Statement of Evidence:

On April 29, 1988 we dug with a backhoe and found a 6" X 6" square granite stone 2½' deep, with a lathe along side of it. We then set a 1½" iron pipe on top of it flush with the road surface.

Doc# 262784 Fee: \$0.00 2 Pages

Property & Public Services
Property Records Division
Yellow Medicine County, Minnesota
I hereby certify that the within instrument
was filed on October 1, 2015 at 9:45 AM

Janel Timm, Yellow Medicine County Recorder

By Kelly Kanger Deputy

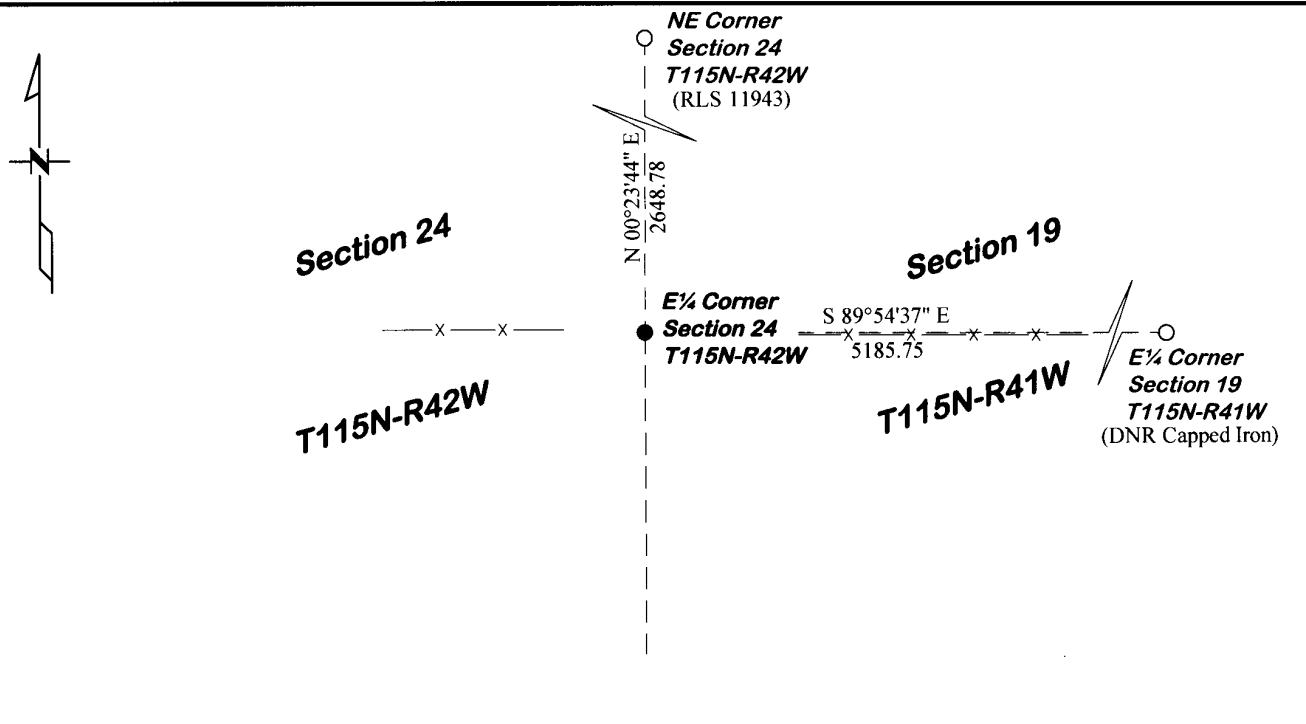
CERTIFICATE OF LOCATION OF GOVERNMENT CORNER

East Quarter Corner of Section **24**, Township **115**, Range **42**

Fifth Principal Meridian, State of Minnesota, County of **Yellow Medicine**

At the corner location shown on the sketch:

- On 4/30/12 found a Nothing
DATE
- left monument as found lowered monument removed monument (explain)
- On 5/16/12 placed a Capped Iron Rod "46169 46171"
DATE



Statement of evidence for this corner location is on back of this page.

I hereby certify that this document was researched and prepared by me or under my direct supervision.

Signature [Signature] Date 7/30/12 License No. 46171
 Title: Land Surveyor Professional Engineer County Surveyor County Engineer

STATEMENT OF EVIDENCE

East Quarter Corner of Section 24 T115N-R42W

- 1858 W.J. Neely was contracted by the United States Government Land Office to perform the Original Public Land Survey in this township. He records in his field notes "Set gov sec post deposited coal made mound trench & pits as per instructions".
- 1901 John Norgaard, County Surveyor, records in Yellow Medicine County Surveyor's Record Book A page 76, "found Section cor.", but does not note what type of monument was found at the corner position.
- May 16, 2012 Matthew D. Runke, P.L.S. #46171, set a Capped Iron Rod "46169 46171" at the corner position using single proration methods from dimensions shown on 1901 Norgaard survey. This position is supported by field evidence of old fence posts to the north, east, and west of the corner position.

CERTIFICATE OF LOCATION OF GOVERNMENT CORNER

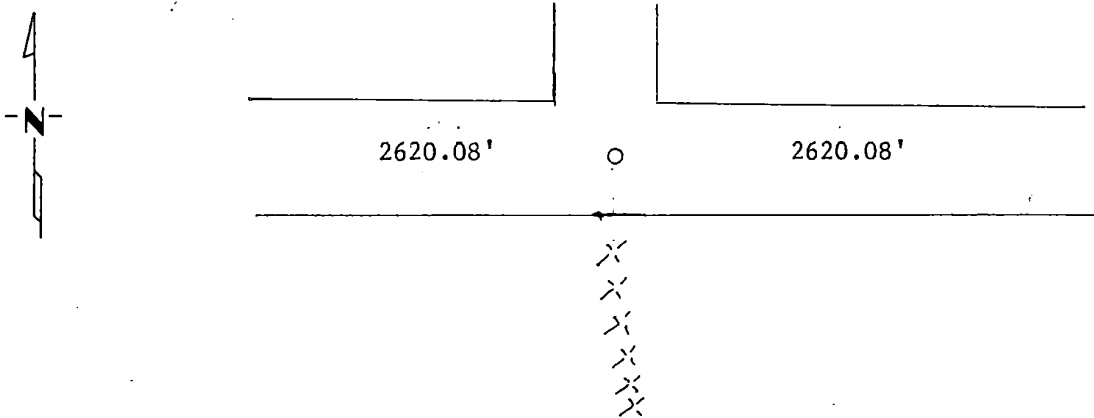
North $\frac{1}{4}$ Corner of Section 24, Township 115N, Range 42W, 5th P.M.

STATE OF MINNESOTA, County of Yellow Medicine

At the corner location shown on the sketch:

- On _____ found a _____
DATE
- left monument as found, lowered monument, removed monument (explain)
- On 4/29/88 placed a 1 1/4" Iron Pipe with seal for the section corner
DATE

SKETCH OF REFERENCE TIES



Statement of evidence relative to this corner location is on back of page.

I hereby certify that this document and the data contained herein was prepared by me or under my direct supervision.

Lytle E. Mosing 5/18/88
SIGNATURE DATE

Registration No. 111943
 Land Surveyor, Professional Engineer
 County Surveyor, County Engineer

OFFICE OF THE COUNTY RECORDER
 County of Yellow Medicine

I hereby certify that this document was filed in the Co. Recorders office at 10:35 A.M. on the 25 day of January A.D., 1989

County Recorder Norman J. Opdahl
 By Kay Nerdahl, Deputy
 DOCUMENT NO. 194572

Statement of Evidence:

On April 29, 1988 we dug with a backhoe and found nothing, we then set the corner midway and on line with the section corners.

CERTIFICATE OF LOCATION OF GOVERNMENT CORNER

East $\frac{1}{4}$ Corner of Section 24, Township 115N, Range 42W, 5th P.M.

STATE OF MINNESOTA, County of Yellow Medicine

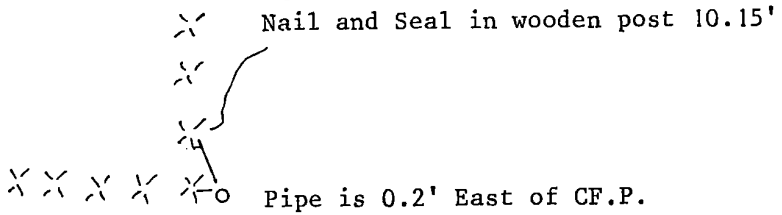
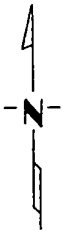
At the corner location shown on the sketch:

On _____ found a _____
DATE

left monument as found, lowered monument, removed monument (explain)

On 5/3/88 placed a 1 1/4" Iron Pipe for the East Quarter Corner
DATE

SKETCH OF REFERENCE TIES



Statement of evidence relative to this corner location is on back of page.

I hereby certify that this document and the data contained herein was prepared by me or under my direct supervision.

Lyle E. Mosing 5/20/88
SIGNATURE DATE

Registration No. 11943
 Land Surveyor, Professional Engineer
 County Surveyor, County Engineer

OFFICE OF THE COUNTY RECORDER

County of Yellow Medicine

I hereby certify that this document was filed in the Co. Recorders office at 10:30 A.M. on the 25 day of January A.D., 1989

County Recorder Norman J. Opdahl

By Kay Nordahl, Deputy

DOCUMENT NO. 194571

Statement of Evidence:

On May 3, 1988 we set the east Quarter corner midway and
on line between the section corners.

CERTIFICATE OF LOCATION OF GOVERNMENT CORNER

Northeast Corner of Section 24, Township 115N, Range 42W, 5th P.M.

STATE OF MINNESOTA, County of Yellow Medicine

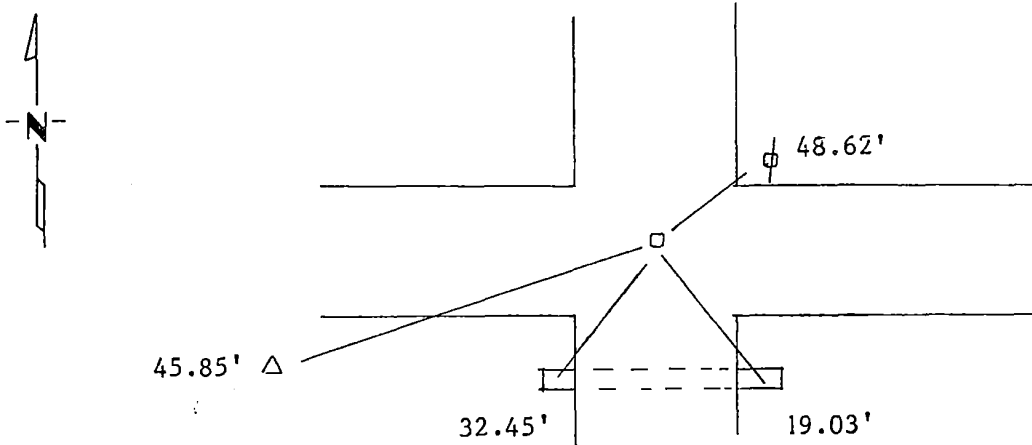
At the corner location shown on the sketch:

On 4/29/88 found a 6" X 6" Granite Stone 18" deep
DATE

left monument as found, lowered monument, removed monument (explain)

On 4/29/88 placed a 1 1/4" ^{PIPE} ~~rod~~ on top of the stone
DATE

SKETCH OF REFERENCE TIES



Nail and Seal	Telephone Post	SW	45.85'
PK Nail in Corrugated Pipe		SSW	32.45'
PK Nail in Corrugated Pipe		SE	19.03'
Nail and Seal	Power Pole	NE	48.62'

Statement of evidence relative to this corner location is on back of page.

I hereby certify that this document and the data contained herein was prepared by me or under my direct supervision.

Lyle E. Mow 5/18/88
SIGNATURE DATE

Registration No. 111943

- Land Surveyor, Professional Engineer
 County Surveyor, County Engineer

OFFICE OF THE COUNTY RECORDER

County of Yellow Medicine

I hereby certify that this document was filed in the Co. Recorders office at 10:25 A.M. on the 25 day of January A.D., 1989

County Recorder Norman J. Opdahl

By Kay Nordahl, Deputy

DOCUMENT NO. 194570

Statement of Evidence:

On April 29, 1988 we dug and found a 6" X 6" granite stone
18" deep, we then set a 1½" Iron Pipe on top of it.

CERTIFICATE OF LOCATION OF GOVERNMENT CORNER

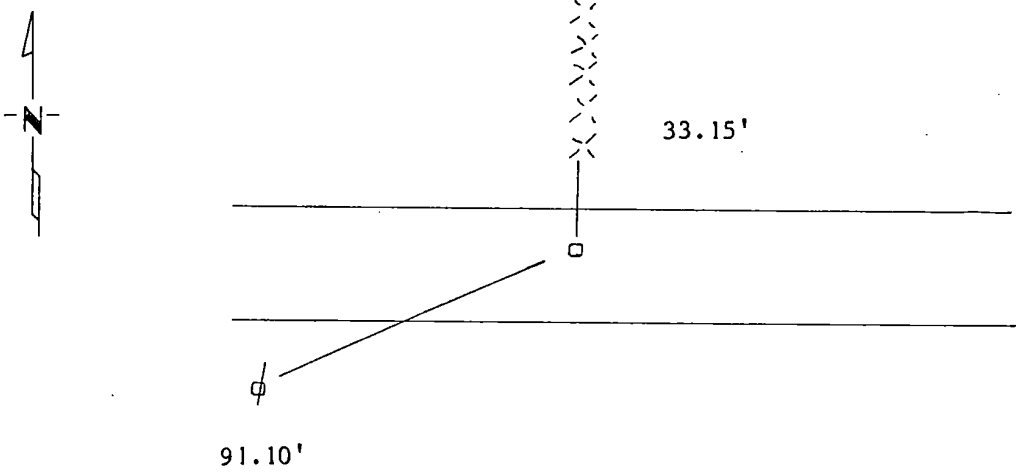
North $\frac{1}{4}$ Corner of Section 25, Township 115N, Range 42W, 5th P.M.

STATE OF MINNESOTA, County of Yellow Medicine

At the corner location shown on the sketch:

- On _____ found a _____
DATE
- left monument as found, lowered monument, removed monument (explain)
- On 4/27/88 placed a 1 1/2" Iron Pipe with Seal midway and on line
DATE
for the corner

SKETCH OF REFERENCE TIES



Center of 3" Pipe end post	North	33.15'
Nail and Seal	Power Pole SW	91.10'

Statement of evidence relative to this corner location is on back of page.

I hereby certify that this document and the data contained herein was prepared by me or under my direct supervision.

Lytle C. Moring 5-11-1988
SIGNATURE DATE

Registration No. 11943

- Land Surveyor, Professional Engineer
- County Surveyor, County Engineer

OFFICE OF THE COUNTY RECORDER
County of Yellow Medicine

I hereby certify that this document was filed in the Co. Recorders office at 10:40 A.M. on the 25 day of January A.D., 1989

County Recorder Norman J. Opdahl
By Kay Nordahl, Deputy

DOCUMENT NO. 194573

Statement of Evidence:

On April 27, 1988 we placed a 1 1/2" iron pipe into the ground for the section corner. We did not dig for the corner because there was no record of anything being placed there for the corner.

CERTIFICATE OF LOCATION OF GOVERNMENT CORNER

EAST QUARTER Corner of Section 30, Township 115 N., Range 42 W., 5th P.M.
STATE OF MINNESOTA, County of YELLOW MEDICINE.

At the corner location shown on the sketch:

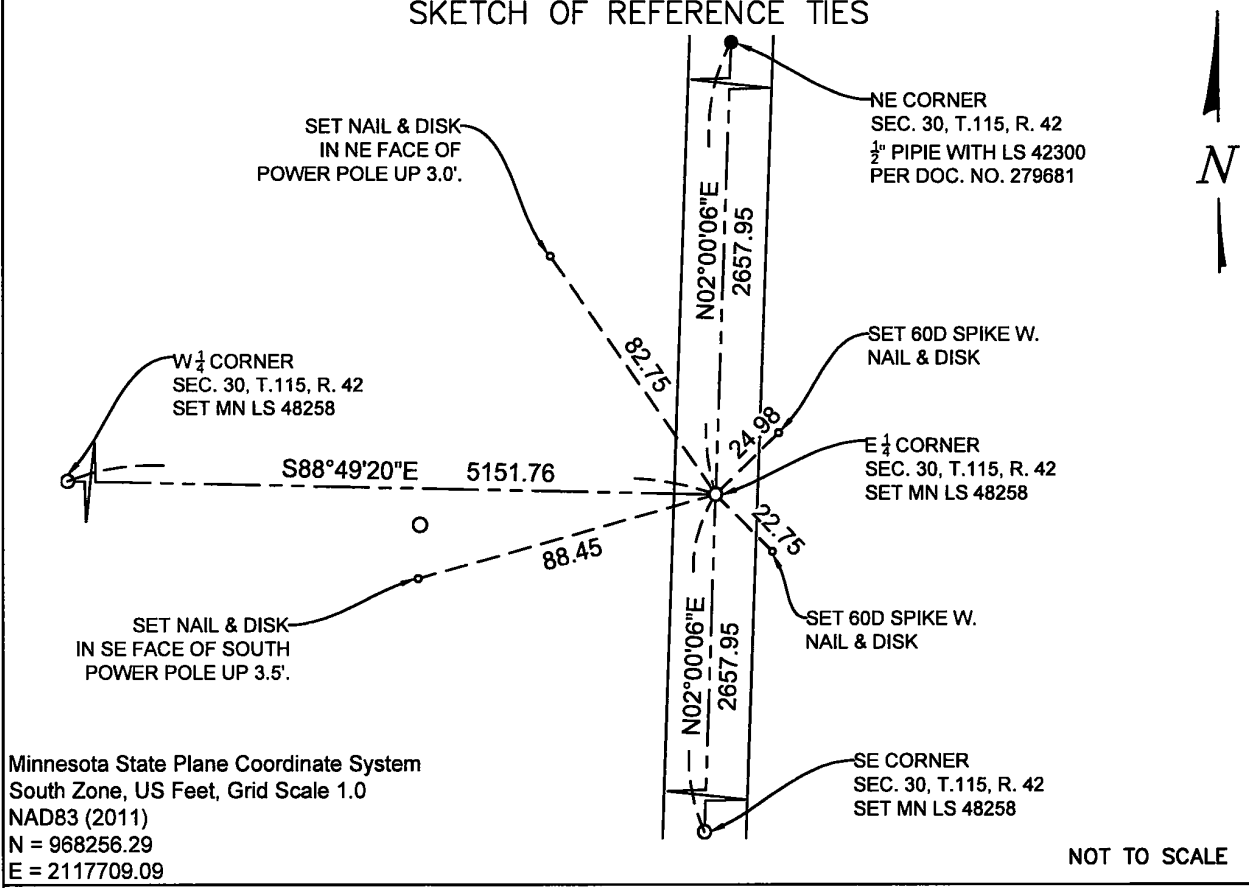
On _____ date found a _____

left monument as found, lowered monument, removed monument (explain)

On 7-19-2023 date placed a 5/8 INCH BY 18" LONG REBAR WITH CAP MARKED

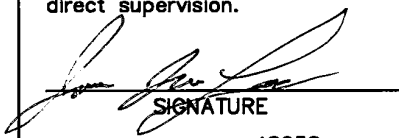
MN LS 48258 AT THE LOCATION SHOWN BELOW.

SKETCH OF REFERENCE TIES



Statement of evidence relative to this corner location is on back of this page.

I hereby certify that this document and the data contained herein was prepared by me or under my direct supervision.


SIGNATURE

9-5-2023
DATE

Registration No. 48258

- Land Surveyor Professional Engineer
 County Surveyor County Engineer

Doc# 280875 Fee: \$0.00 2 Pages

Property & Public Services
Property Records Division
Yellow Medicine County, Minnesota
I hereby certify that the within instrument was filed on September 11, 2023 at 12:25 PM

Janel Timm, Yellow Medicine County Recorder

By Marit Nordang Deputy

STATEMENT OF EVIDENCE

E $\frac{1}{4}$ 30-115-42

KLJ contacted the following for survey information

MN GLO/BLM original survey records
Yellow Medicine County Recorder's Office
MNDOT office in Willmar
Yellow Medicine County Highway Engineer's Office
Bonnema Surveys, Inc. of Willmar
O'Malley & Kron Land Surveyors, Inc. of Willmar
Bueltel-Moseng Land Surveying of Marshall
Marihart Surveying, P.A. of Dawson
Egan Field & Nowak, Inc of New Brighton
E.G. Rud & Sons, Inc. of Hutchinson

In September, 1858, C.E. DAVIS & J.W. WEBB JR., General Land Office Deputy Surveyors performing the original survey of the subdivision lines set a wood post, in mound with pits.

In November, 1917 County Surveyor John Norgaard's "Red Book", page 395, on file at the Yellow Medicine County Recorder's Office shows distances of 2657.00 feet North and 2657.00 feet South to each Section corner. The plat shows a stone. The notes indicates he set a stone on a straight line single proportion.

On June 7, 2023, KLJ dug a 3x3x3 hole with a large electric jackhammer and generator at the midpoint and online between section corners north and south and probed and found nothing. KLJ established the East $\frac{1}{4}$ corner location at the straight line single proportion between section corners north and south.

On July, 19, 2023, KLJ set a $\frac{5}{8}$ " rebar with MN LS 48258 down 0.50' below grade which falls on the centerline of the township road.

CERTIFICATE OF LOCATION OF GOVERNMENT CORNER

SOUTHEAST Corner of Section 30, Township 115 N., Range 42 W., 5th P.M.
STATE OF MINNESOTA, County of YELLOW MEDICINE.

At the corner location shown on the sketch:

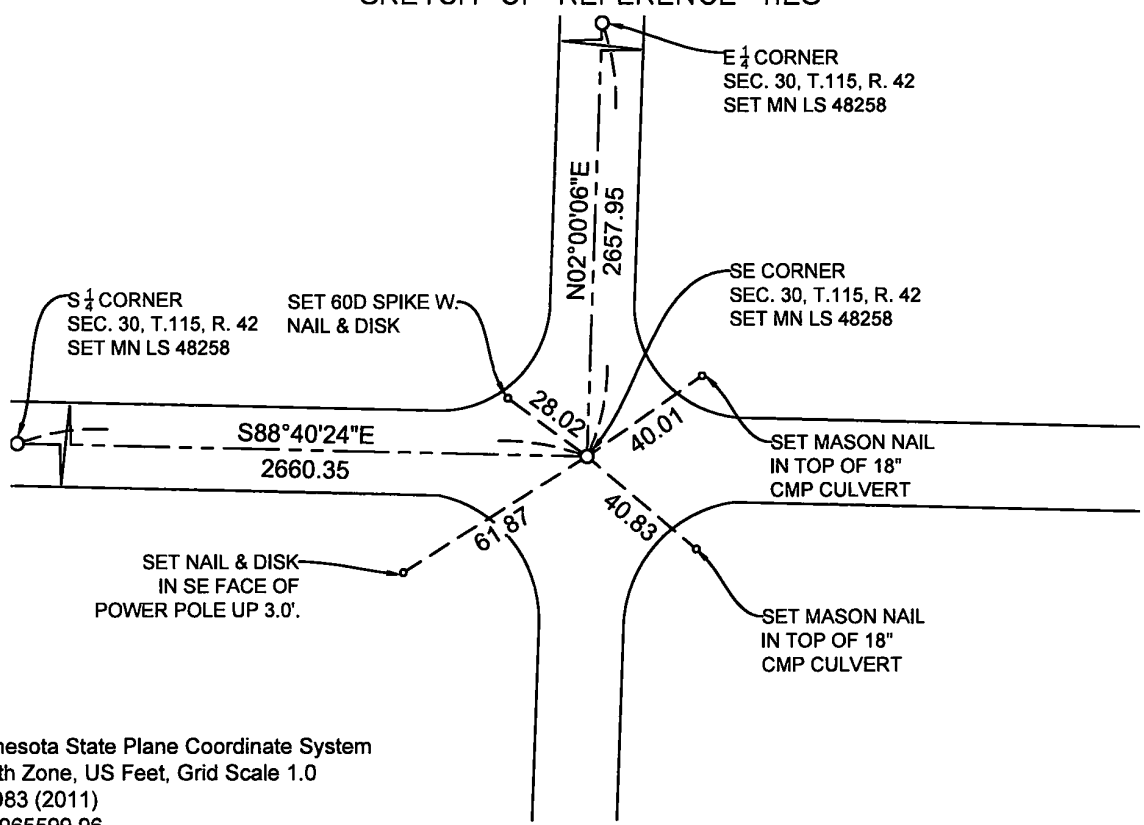
On _____ found a _____
date

left monument as found, lowered monument, removed monument (explain)

On 7-19-2023 placed a 5/8 INCH BY 18" LONG REBAR WITH CAP MARKED
date

MN LS 48258 AT THE LOCATION SHOWN BELOW.

SKETCH OF REFERENCE TIES

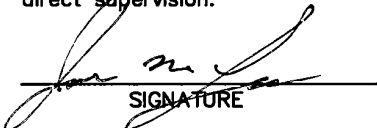


Minnesota State Plane Coordinate System
South Zone, US Feet, Grid Scale 1.0
NAD83 (2011)
N = 965599.96
E = 2117616.24

NOT TO SCALE

Statement of evidence relative to this corner location is on back of this page.

I hereby certify that this document and the data contained herein was prepared by me or under my direct supervision.


SIGNATURE

9-5-2023
DATE

Registration No. 48258

- Land Surveyor
- Professional Engineer
- County Surveyor
- County Engineer

Doc# 280874 Fee: \$0.00 2 Pages

Property & Public Services
Property Records Division
Yellow Medicine County, Minnesota
I hereby certify that the within instrument was filed on September 11, 2023 at 12:20 PM

Janel Timm, Yellow Medicine County Recorder

By Marit Nordang Deputy

STATEMENT OF EVIDENCE

SE 30-115-42

KLJ contacted the following for survey information

MN GLO/BLM original survey records
Yellow Medicine County Recorder's Office
MNDOT office in Willmar
Yellow Medicine County Highway Engineer's Office
Bonnema Surveys, Inc. of Willmar
O'Malley & Kron Land Surveyors, Inc. of Willmar
Bueltel-Moseng Land Surveying of Marshall
Marihart Surveying, P.A. of Dawson
Egan Field & Nowak, Inc of New Brighton
E.G. Rud & Sons, Inc. of Hutchinson

In September, 1858, C.E. DAVIS & J.W. WEBB JR., General Land Office Deputy Surveyors performing the original survey of the subdivision lines set a wood post, in mound with pits.

In November, 1917 County Surveyor John Norgaard's "Red Book", page 395, on file at the Yellow Medicine County Recorder's Office shows distances of 2656.00 feet East and 2659.00 feet North to each Section corner. There is no indication of a monument found or set.

In 1917 County Surveyor John Norgaard's "Red Book", page 540, on file at the Yellow Medicine County Recorder's Office shows distances of 2657.00 feet West and 2647.00 feet South to each Section corner. There is no indication of a monument found or set.

On June 7, 2023, KLJ dug and found a 60d spike down 0.50' on centerline/centerline of the township road intersection. The spike was lifted and no other magnetic draws were present. The 60d spike was reset and accepted as the Southeast Section corner. All Highway Department ties are gone.

On July, 19, 2023, KLJ removed the 60d spike and set a $\frac{5}{8}$ " rebar in the same location as the 60d spike with MN LS 48258 down 0.50' below grade which falls on the centerline intersection of the township road.

CERTIFICATE OF LOCATION OF GOVERNMENT CORNER

SOUTH QUARTER Corner of Section 30, Township 115 N., Range 42 W., 5th P.M.
STATE OF MINNESOTA, County of YELLOW MEDICINE.

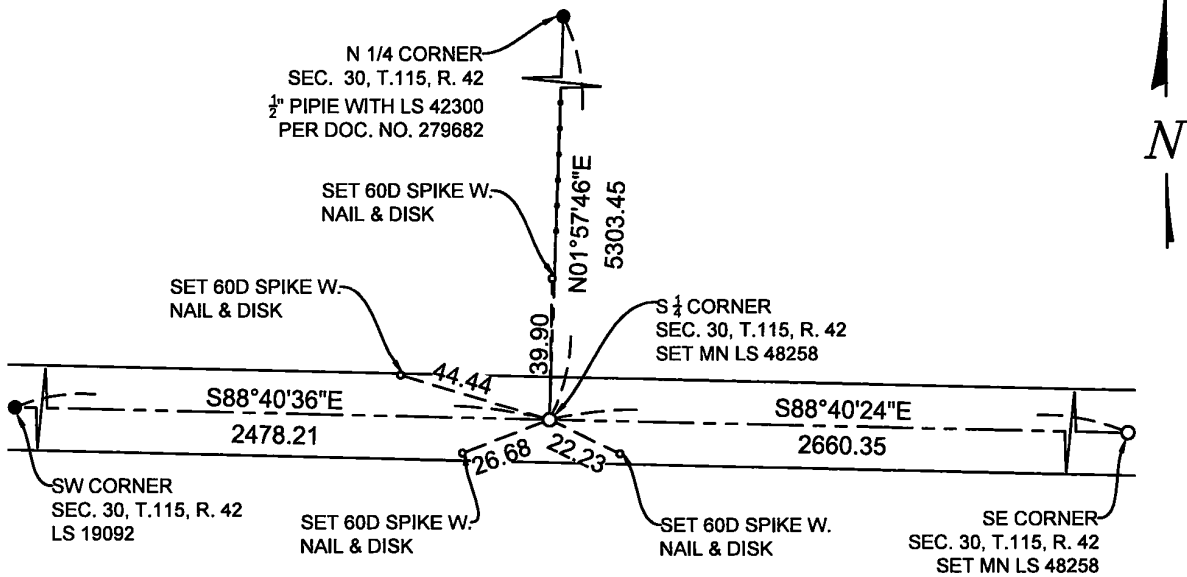
At the corner location shown on the sketch:

On _____ date found a _____

left monument as found, lowered monument, removed monument (explain)

On 7-19-2023 date placed a 5/8 INCH BY 18" LONG REBAR WITH CAP MARKED
MN LS 48258 AT THE LOCATION SHOWN BELOW.

SKETCH OF REFERENCE TIES



Minnesota State Plane Coordinate System
South Zone, US Feet, Grid Scale 1.0
NAD83 (2011)
N = 965661.55
E = 2114956.60

NOT TO SCALE

Statement of evidence relative to this corner location is on back of this page.

I hereby certify that this document and the data contained herein was prepared by me or under my direct supervision.

Janel Timm
SIGNATURE

9-5-2023
DATE

Registration No. 48258

- Land Surveyor Professional Engineer
 County Surveyor County Engineer

Doc# 280873 Fee: \$0.00 2 Pages

Property & Public Services
Property Records Division
Yellow Medicine County, Minnesota
I hereby certify that the within instrument was filed on September 11, 2023 at 12:15 PM

Janel Timm, Yellow Medicine County Recorder

By *Marit Nordang* Deputy

STATEMENT OF EVIDENCE

S 30-115-42

KLJ contacted the following for survey information

MN GLO/BLM original survey records
Yellow Medicine County Recorder's Office
MNDOT office in Willmar
Yellow Medicine County Highway Engineer's Office
Bonnema Surveys, Inc. of Willmar
O'Malley & Kron Land Surveyors, Inc. of Willmar
Bueltel-Moseng Land Surveying of Marshall
Marihart Surveying, P.A. of Dawson
Egan Field & Nowak, Inc of New Brighton
E.G. Rud & Sons, Inc. of Hutchinson

In September, 1858, C.E. DAVIS & J.W. WEBB JR., General Land Office Deputy Surveyors performing the original survey of the subdivision lines set a wood post, in mound with pits.

In 1917 County Surveyor John Norgaard's "Red Book", page 540, on file at the Yellow Medicine County Recorder's Office shows distances of 2477.00 feet West and 2657.00 feet east to each Section corner. There is no indication of a monument found or set. He notes a fence running south. The fence south is no longer present. There is a fence running north.

On June 7, 2023, KLJ dug a 3x3x3 hole with a large electric jackhammer and generator at the centerline of the road and the extension of the fence line running north and probed and found nothing. KLJ established the South $\frac{1}{4}$ corner location on the centerline of the township road and extension of the fence north.

On July, 19, 2023, KLJ set a $\frac{5}{8}$ " rebar with MN LS 48258 down 0.50' below grade which falls on the centerline of the township road and extension of the fence north.

CERTIFICATE OF LOCATION OF GOVERNMENT CORNER

WEST QUARTER Corner of Section 30, Township 115 N., Range 42 W., 5th P.M.
STATE OF MINNESOTA, County of YELLOW MEDICINE.

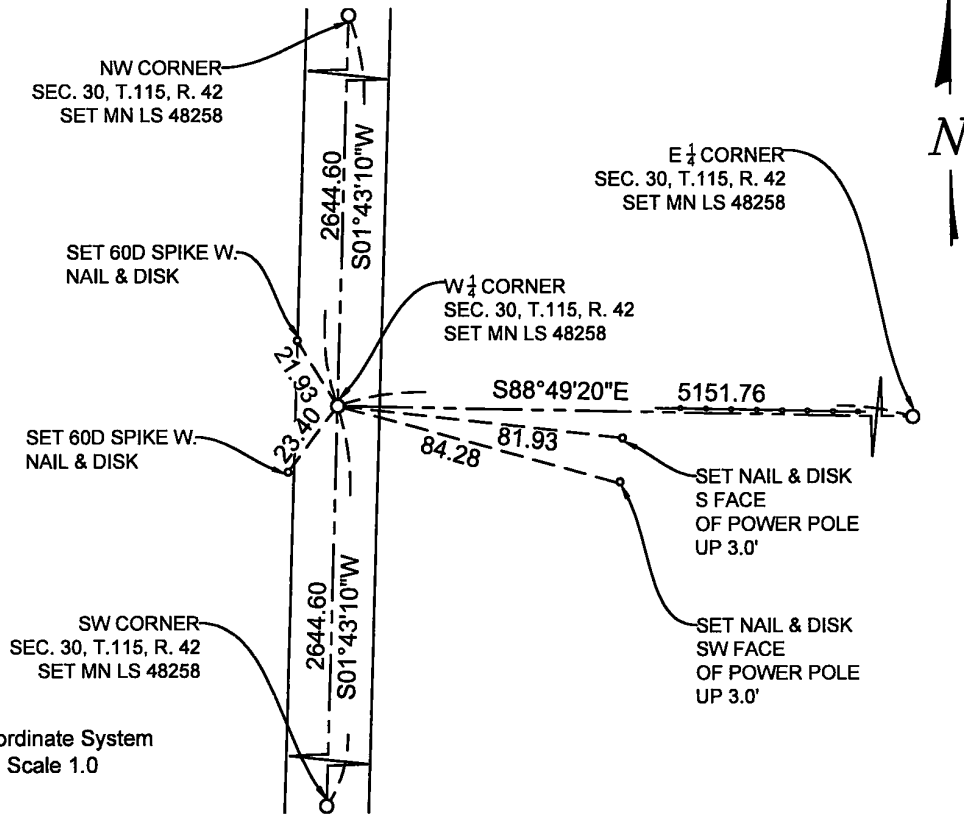
At the corner location shown on the sketch:

On _____ found a _____
date

left monument as found, lowered monument, removed monument (explain)

On 7-19-2023 placed a 5/8 INCH BY 18" LONG REBAR WITH CAP MARKED
date
MN LS 48258 AT THE LOCATION SHOWN BELOW.

SKETCH OF REFERENCE TIES



Minnesota State Plane Coordinate System
South Zone, US Feet, Grid Scale 1.0
NAD83 (2011)
N = 968362.19
E = 2112558.41

NOT TO SCALE

Statement of evidence relative to this corner location is on back of this page.

I hereby certify that this document and the data contained herein was prepared by me or under my direct supervision.

[Signature]
SIGNATURE

9-5-2023
DATE

Registration No. 48258

- Land Surveyor Professional Engineer
 County Surveyor County Engineer

Doc# 280872 Fee: \$0.00 2 Pages

Property & Public Services
Property Records Division
Yellow Medicine County, Minnesota
I hereby certify that the within instrument was filed on September 11, 2023 at 12:10 PM

Janel Timm, Yellow Medicine County Recorder

By Marit Nordang Deputy

STATEMENT OF EVIDENCE

W 30-115-42

KLJ contacted the following for survey information

MN GLO/BLM original survey records
Yellow Medicine County Recorder's Office
MNDOT office in Willmar
Yellow Medicine County Highway Engineer's Office
Bonnema Surveys, Inc. of Willmar
O'Malley & Kron Land Surveyors, Inc. of Willmar
Bueltel-Moseng Land Surveying of Marshall
Marihart Surveying, P.A. of Dawson
Egan Field & Nowak, Inc of New Brighton
E.G. Rud & Sons, Inc. of Hutchinson

In September, 1858, WJ Neely, General Land Office Deputy Surveyor performing the original survey of the subdivision lines set a wood post, deposited coal, made mound trench and pits.

On June 7, 2023, KLJ dug a 3x3x3 hole with a large electric jackhammer and generator at the midpoint and online between section corners north and south and probed and found nothing. KLJ established the West $\frac{1}{4}$ corner location at the straight line single proportion between section corners north and south.

On July, 19, 2023, KLJ set a $\frac{5}{8}$ " rebar with MN LS 48258 down 0.50' below grade which falls on the centerline of the roadway and extension of the remnant fence east.

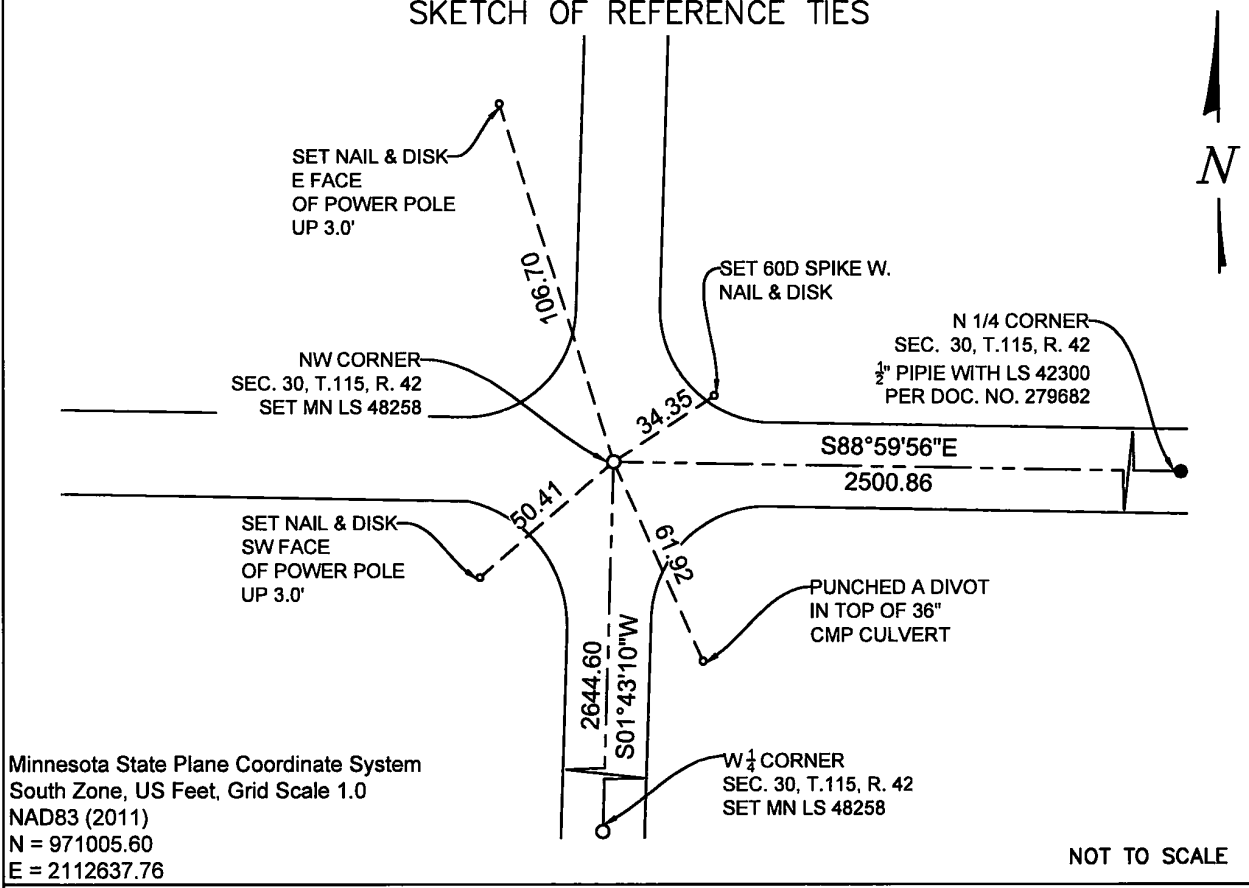
CERTIFICATE OF LOCATION OF GOVERNMENT CORNER

NORTHWEST Corner of Section 30, Township 115 N., Range 42 W., 5th P.M.
STATE OF MINNESOTA, County of YELLOW MEDICINE.

At the corner location shown on the sketch:

- On 6-7-2023 found a 60D SPIKE WITH REMNANT SURVEYORS TAPE
date
DOWN 0.30' BELOW GRADE ON CL-CL OF TOWNSHIP ROAD
- left monument as found, lowered monument, removed monument (explain)
- On 7-19-2023 placed a 5/8 INCH BY 18" LONG REBAR WITH CAP MARKED
date
MN LS 48258 AT THE LOCATION SHOWN BELOW.

SKETCH OF REFERENCE TIES



Statement of evidence relative to this corner location is on back of this page.

I hereby certify that this document and the data contained herein was prepared by me or under my direct supervision.

[Signature]
SIGNATURE

9-5-2023
DATE

Registration No. 48258

- Land Surveyor Professional Engineer
- County Surveyor County Engineer

Doc# 280871 Fee: \$0.00 2 Pages

Property & Public Services
Property Records Division
Yellow Medicine County, Minnesota
I hereby certify that the within instrument
was filed on September 11, 2023 at 12:05 PM

Janel Timm, Yellow Medicine County Recorder

By Marit Nordang Deputy

STATEMENT OF EVIDENCE

NW 30-115-42

KLJ contacted the following for survey information

MN GLO/BLM original survey records
Yellow Medicine County Recorder's Office
MNDOT office in Willmar
Yellow Medicine County Highway Engineer's Office
Bonnema Surveys, Inc. of Willmar
O'Malley & Kron Land Surveyors, Inc. of Willmar
Bueltel-Moseng Land Surveying of Marshall
Marihart Surveying, P.A. of Dawson
Egan Field & Nowak, Inc of New Brighton
E.G. Rud & Sons, Inc. of Hutchinson

In September, 1858, WJ Neely, General Land Office Deputy Surveyor performing the original survey of the subdivision lines set a wood post, deposited coal, made mound trench and pits.

On June 7, 2023, KLJ dug and found a 60d spike down 0.50' on centerline/centerline of the township road intersection. The spike was lifted and no other magnetic draws were present. The 60d spike was reset and accepted as the Northwest Section corner. All Highway Department ties are gone.

On July, 19, 2023, KLJ removed the 60d spike and dug a 3x3x3 hole with a large electric jackhammer and generator and found nothing. KLJ set a $\frac{5}{8}$ " rebar with MN LS 48258 down 0.50' below grade in the same location as the 60d spike.

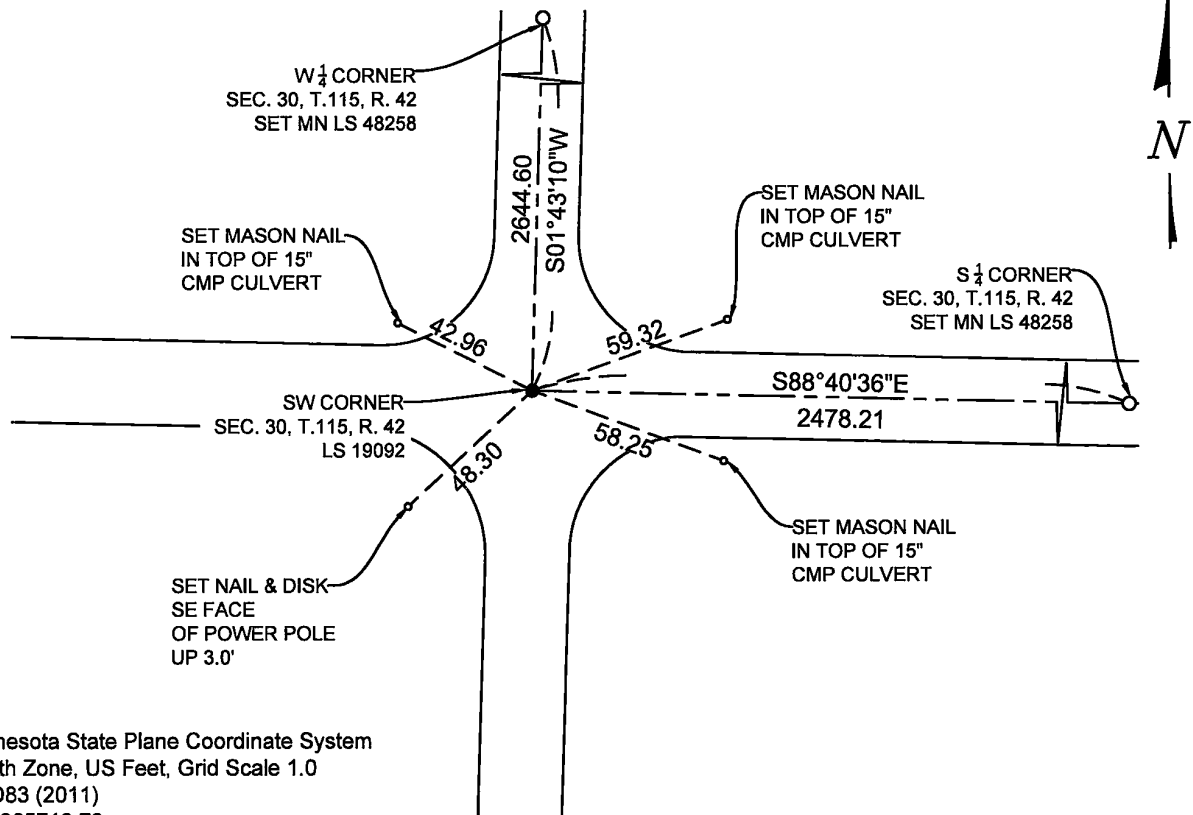
CERTIFICATE OF LOCATION OF GOVERNMENT CORNER

SOUTHWEST Corner of Section 30, Township 115 N., Range 42 W., 5th P.M.
STATE OF MINNESOTA, County of YELLOW MEDICINE.

At the corner location shown on the sketch:

- On 6-7-2023 found a YELLOW CAP MARKED WITH LS 19092
date
DOWN 0.30' BELOW GRADE ON CL-CL OF TOWNSHIP ROAD
- left monument as found, lowered monument, removed monument (explain)
- On _____ placed a _____
date

SKETCH OF REFERENCE TIES



Minnesota State Plane Coordinate System
 South Zone, US Feet, Grid Scale 1.0
 NAD83 (2011)
 N = 965718.79
 E = 2112479.06

NOT TO SCALE

Statement of evidence relative to this corner location is on back of this page.

I hereby certify that this document and the data contained herein was prepared by me or under my direct supervision.

[Signature]
 SIGNATURE
 Registration No. 48258

7-5-2023
DATE

- Land Surveyor Professional Engineer
- County Surveyor County Engineer

Doc# 280870 Fee: \$0.00 2 Pages
 Property & Public Services
 Property Records Division
 Yellow Medicine County, Minnesota
 I hereby certify that the within instrument
 was filed on September 11, 2023 at 12:00 PM

Janel Timm, Yellow Medicine County Recorder

By Marit Nordang Deputy

STATEMENT OF EVIDENCE

SW 30-115-42

KLJ contacted the following for survey information

MN GLO/BLM original survey records
Yellow Medicine County Recorder's Office
MNDOT office in Willmar
Yellow Medicine County Highway Engineer's Office
Bonnema Surveys, Inc. of Willmar
O'Malley & Kron Land Surveyors, Inc. of Willmar
Bueltel-Moseng Land Surveying of Marshall
Marihart Surveying, P.A. of Dawson
Egan Field & Nowak, Inc of New Brighton
E.G. Rud & Sons, Inc. of Hutchinson

In September, 1858, WJ Neely, General Land Office Deputy Surveyor performing the original survey of the subdivision lines entered a pond east and west 75.0 chains north of the southwest corner of said Section 30, he made a mound and pits 8 links south.

In 1917, County Surveyor John Norgaard's "Red Book", page 540, on file at the Yellow Medicine County Recorder's Office shows a distance of 2477.00' east to the South $\frac{1}{4}$ corner and notes a fence running south. The map shows a distance of 2657.00' east from the South $\frac{1}{4}$ to the Southeast corner of Section 30.

On June 7, 2023, KLJ dug and found a $\frac{1}{2}$ " rebar capped iron monument set by Roy Marihart, MN LS 19092, and accepted the monument as the Southwest corner.

On June 20, 2023, KLJ contacted Roy Marihart, MN LS 19092 and he stated that he is retired and he is not going to file corner certificates on any of his Section corner monuments.

CERTIFICATE OF LOCATION OF GOVERNMENT CORNER

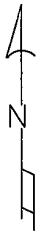
NORTH QUARTER Corner of Section 30, Township 115, Range 42, 5TH P.M.

STATE OF MINNESOTA, County of YELLOW MEDICINE

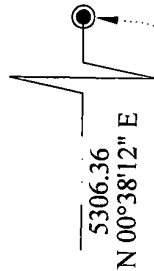
At the corner location shown on the sketch:

- On _____ found a _____
Date
- left monument as found, lowered monument, removed monument (explain)
- On 2-9-2023 placed a 1/2" Iron Pipe, with Cap #42300
Date

SKETCH OF REFERENCE TIES



SEC. 19



N1/4 COR. SEC. 19,
T-115, R-42
(IRON PIPE MARKED 19092)

NE COR. SEC. 30,
T-115, R-42

240TH AVE.

N 1/4 COR. SEC. 30,
T-115, R-42

2664.50
S 89°43'40" W

SEC. 30

YELLOW MEDICINE, COUNTY COORDINATE.
NAD 83, 2011 ADJUSTMENT
N= 174785.628
E= 484045.143

Statement of evidence relative to this corner location is on back of page.

I hereby certify that this document and the data contained herein was prepared by me or under my direct supervision.

[Signature] 02-20-2023
Signature Date

Registration No. 42300

- Land Surveyor Professional Engineer
- County Surveyor County Engineer

Doc# 279682 Fee: \$0.00 2 Pages

Property & Public Services
Property Records Division
Yellow Medicine County, Minnesota
I hereby certify that the within instrument was filed on February 27, 2023 at 1:10 PM

Janel Timm, Yellow Medicine County Recorder

By Marit Nordang Deputy

Statement of Evidence:

North Quarter Corner of Section 30, Township 115, Range 42, Yellow Medicine County, Minnesota.

October 1, 1864 - The original government survey was performed by C.E. Davis & J.W. Webb Jr.

April 23 & 24, 1959 - U.S. Fish and Wildlife Service conducted a survey in Section 19. Their field notes indicate that they set a spike at the centerline of a East - West Road and in line with a North-South fence. They give a distance of 2664.5 feet to the Southeast corner and a distance of 5306.4 feet to the North Quarter corner of Section 19.

February 9, 2023 - O'Malley & Kron Land Surveyors, Inc performed a survey in Section 19. The corner location was computed based on the U.S. Fish and Wildlife survey information and surrounding corners that were found. The computed location was searched but no monument was found. The computed location was accepted as the corner location. A new monument was placed and new ties were made.

CERTIFICATE OF LOCATION OF GOVERNMENT CORNER

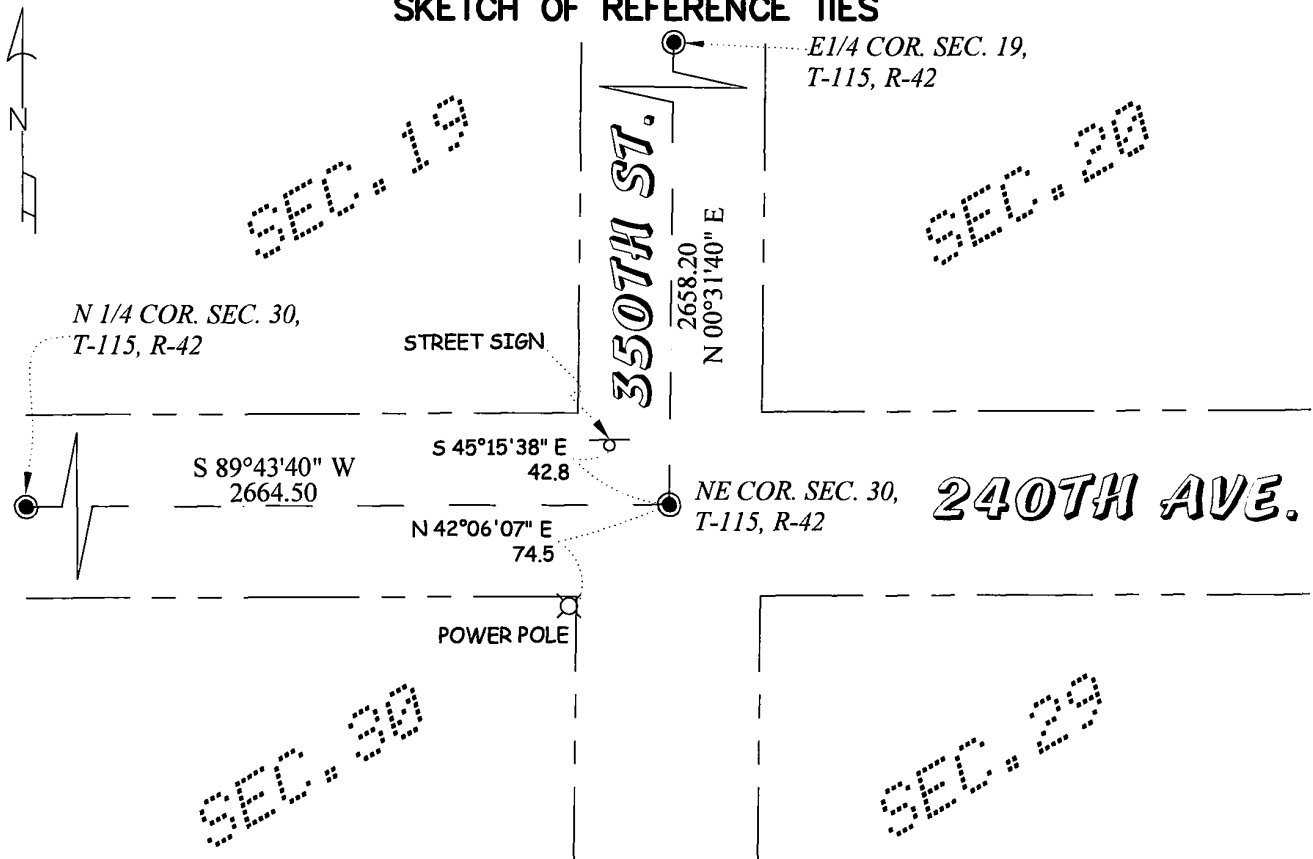
NORTHEAST Corner of Section 30, Township 115, Range 42, 5TH P.M.

STATE OF MINNESOTA, County of YELLOW MEDICINE

At the corner location shown on the sketch:

- On _____ found a _____
Date _____
- left monument as found, lowered monument, removed monument (explain)
- On 2-9-2023 placed a 1/2" Iron Pipe, with Cap #42300
Date _____

SKETCH OF REFERENCE TIES



YELLOW MEDICINE, COUNTY COORDINATE.
 NAD 83, 2011 ADJUSTMENT
 N= 174798.285
 E= 486709.613

Statement of evidence relative to this corner location is on back of page.

I hereby certify that this document and the data contained herein was prepared by me or under my direct supervision.

[Signature]
Signature

02-20-2023
Date

Registration No. 42300

- Land Surveyor Professional Engineer
 County Surveyor County Engineer

Doc# 279681 Fee: \$0.00 2 Pages

Property & Public Services
 Property Records Division
 Yellow Medicine County, Minnesota
 I hereby certify that the within instrument was filed on February 27, 2023 at 1:05 PM

Janel Timm, Yellow Medicine County Recorder

By Marit Nordang Deputy

Statement of Evidence:

Northeast Corner of Section 30, Township 115, Range 42, Yellow Medicine County, Minnesota.

October 1, 1864 - The original government survey was performed by C.E. Davis & J.W. Webb Jr.

April 23 & 24, 1959 - U.S. Fish and Wildlife Service conducted a survey in Section 19. Their field notes indicate that they set a spike at the intersection of the North - South, East-West County Roads. They give a distance of 2658.2 feet to the East Quarter corner and a distance of 2664.5 feet to the South Quarter corner of Section 19.

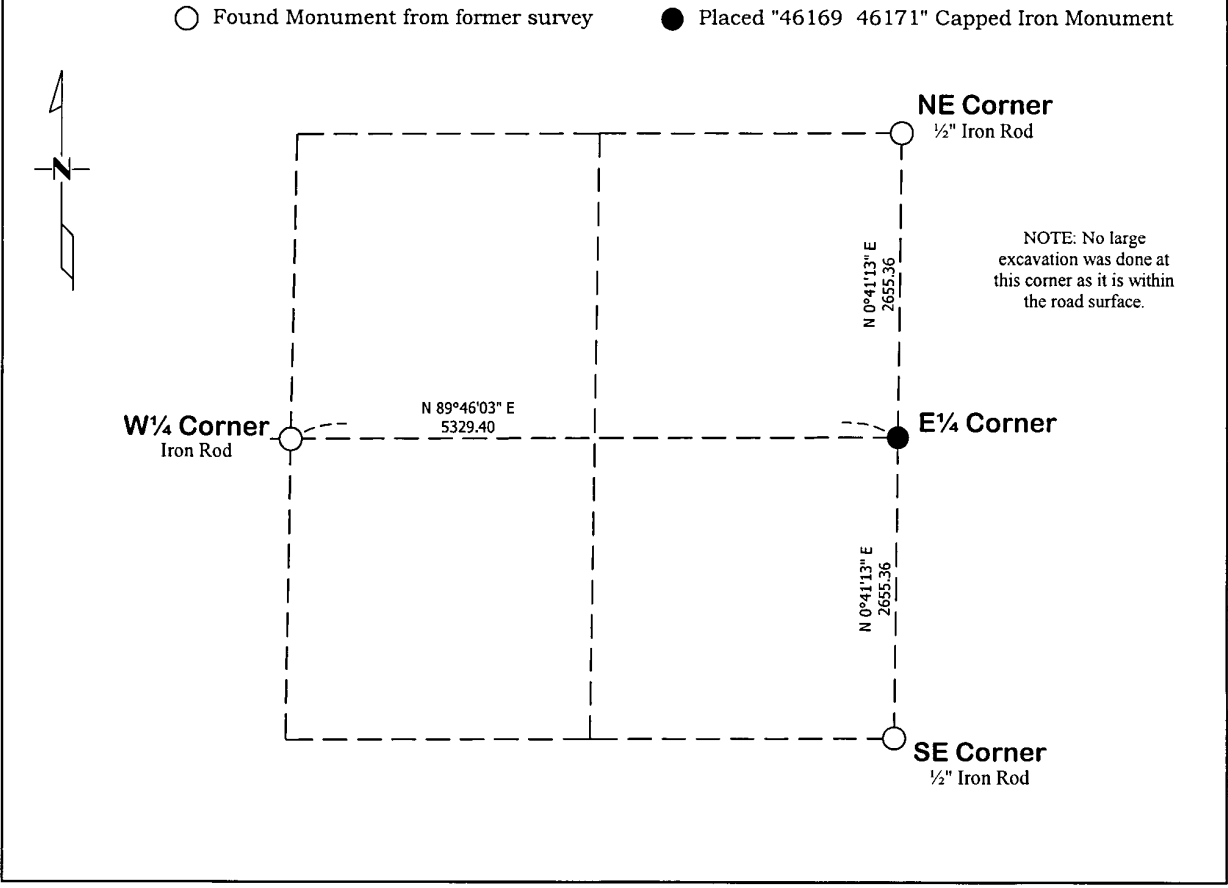
February 9, 2023 - O'Malley & Kron Land Surveyors, Inc performed a survey in Section 19. The corner location was computed based on the U.S. Fish and Wildlife survey information and surrounding corners that were found. The computed location was searched but no monument was found. The computed location was accepted as the corner location. A new monument was placed and new ties were made.

Corners to be Indexed Corner Section Township Range E¼ 35 115 42	Doc# 272686 Fee: \$0.00 1 Pages Property & Public Services Property Records Division Yellow Medicine County, Minnesota I hereby certify that the within instrument was filed on April 6, 2020 at 12:50 PM Janel Timm, Yellow Medicine County Recorder By <u>Kelly Kauger</u> Deputy
I hereby certify that this survey, plan, or report was prepared by me or under my direct supervision and that I am a duly Licensed Land Surveyor under the laws of the state of Minnesota.	
Signature: <u>[Signature]</u> Date: <u>4/1/2020</u>	
Joshua M. Stern - LS 46169	(reserved for recording data)

CERTIFICATE OF LOCATION OF GOVERNMENT CORNERS

Land Survey Monuments situated in Section 35, Township 115, Range 42 West of the Fifth Principal Meridian, Yellow Medicine County, State of Minnesota.

Statement of Evidence:
1864 - Original Government Land Office Survey
Unknown - Surveyor, LS 19092
2014 - Surveyor, LS 14895
March, 2020 - Joshua M. Stern searched the area around this corner position with a metal locator and found no surface monumentation. Stern set a $\frac{5}{8}$ " x 18" rebar with a plastic cap stamped "46169 46171" at the midpoint and online between the northeast and southeast corners of the Section as noted in 1864.



CERTIFICATE OF LOCATION OF GOVERNMENT CORNER

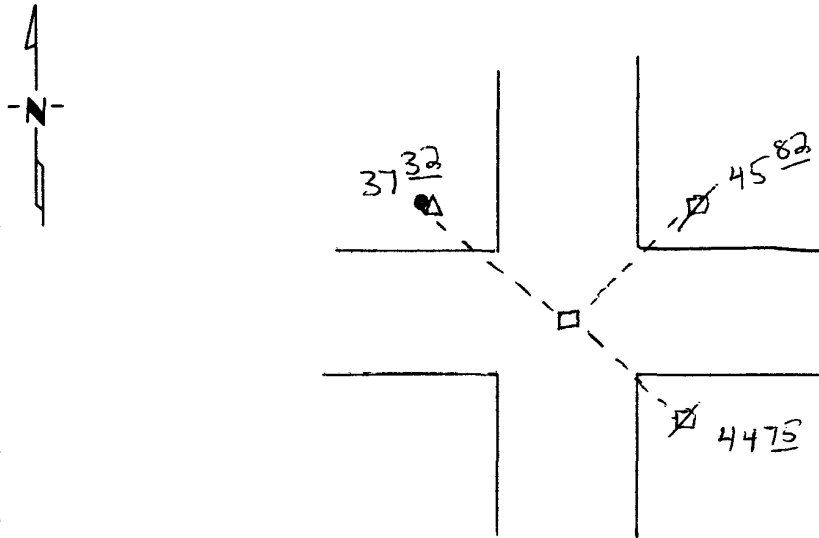
Northeast _____ Corner of Section 36, Township 115, Range 42, 5th P.M.

STATE OF MINNESOTA, County of Yellow Medicine

At the corner location shown on the sketch:

- On May 5, 1995 found a 6"x6"x24" square cut granite stone with 2 small field stones next to it, 3' down
DATE
- left monument as found, lowered monument, removed monument (explain)
- On May 5, 1995 placed a 1" iron pipe w/seal #11943 over stone at the road surface.
DATE

SKETCH OF REFERENCE TIES



Nail & seal in power pole SE 44.75'
 Nail & seal in power pole NE 45.82'
 Nail & seal in tele. pedestal post NW 37.32'

Statement of evidence relative to this corner location is on back of page.

I hereby certify that this document and the data contained herein was prepared by me or under my direct supervision.

Ryle E. Mooney 5-995
SIGNATURE DATE

Registration No. 11943
 Land Surveyor, Professional Engineer
 County Surveyor, County Engineer

OFFICE OF THE COUNTY RECORDER
 County of Yellow Medicine

I hereby certify that this document was filed in the Co. Recorders office at 9:40 A.M. on the 30 day of June A.D., 19 95

County Recorder *Ronald Spidell*
 By _____, Deputy

DOCUMENT NO. 209403

Statement of Evidence:

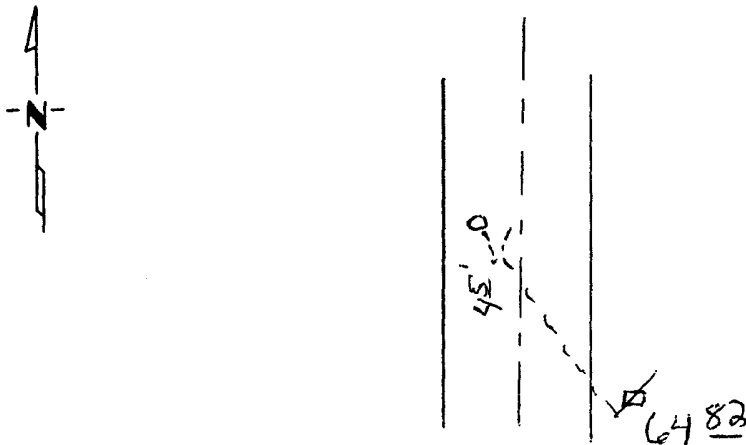
CERTIFICATE OF LOCATION OF GOVERNMENT CORNER

East Quarter _____ Corner of Section 36, Township 115, Range 42, 5th P.M.
STATE OF MINNESOTA, County of Yellow Medicine

At the corner location shown on the sketch:

- On May 1, ^{DATE}1995 found a Large 24" field stone 3" down and 4½' west of center line. Got a signal with locator,,but stone was too large to move by hand.
 - left monument as found, lowered monument, removed monument (explain)
- On _____ placed a _____
_{DATE}

SKETCH OF REFERENCE TIES



Nail & seal in power pole SE 64.82'

Statement of evidence relative to this corner location is on back of page.

I hereby certify that this document and the data contained herein was prepared by me or under my direct supervision.

Steph C. Moser 5-9-95
SIGNATURE DATE
Registration No. 119430
 Land Surveyor, Professional Engineer
 County Surveyor, County Engineer

OFFICE OF THE COUNTY RECORDER
County of Yellow Medicine

I hereby certify that this document was filed in the Co. Recorders office at 9:35 A.M. on the 30 day of June A.D., 1995

County Recorder *Norman Gudall*

By _____, Deputy

DOCUMENT NO. 209402

Statement of Evidence: