

# CERTIFICATE OF LOCATION OF GOVERNMENT CORNER

E 1/4 Corner of Section 17, Township 116, Range 39, 5TH P.M.

STATE OF MINNESOTA, County of CHIPPEWAH

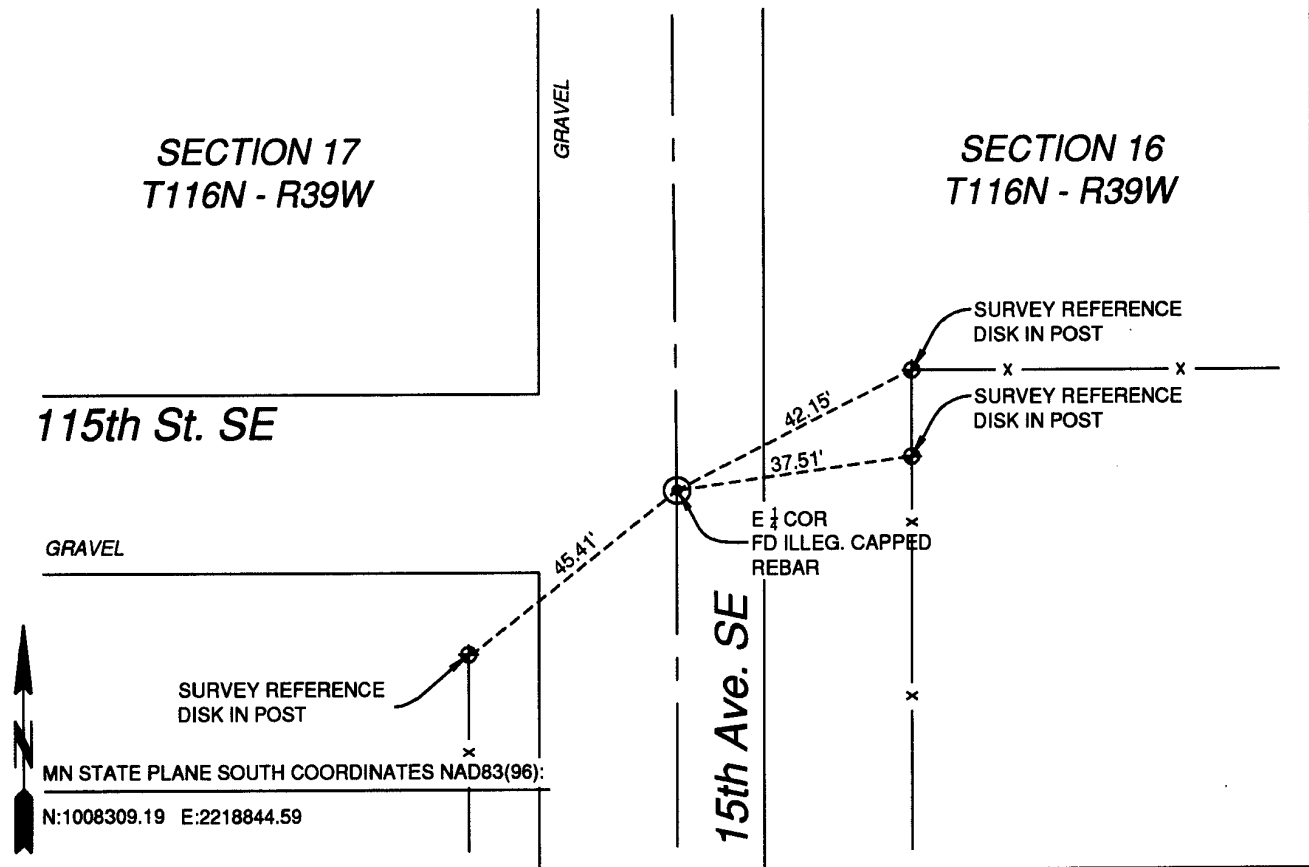
At the corner location shown on the sketch:

On 1-4-2012 found a ILLEGIBLE CAPPED REBAR 0.3' BELOW THE GRAVEL SURFACE

left monument as found,  lowered monument,  removed monument (explain)

On \_\_\_\_\_ placed a \_\_\_\_\_

## SKETCH OF REFERENCE TIES



Statement of evidence relative to this corner location is on back of page.

I hereby certify that this document and the data contained herein was prepared by me or under my direct supervision.

[Signature] 1/4/2012  
SIGNATURE DATE

Registration No. 48998

Land Surveyor,  Professional Engineer  
 County Surveyor,  County Engineer

OFFICE OF THE COUNTY RECORDER

County of \_\_\_\_\_

I hereby certify that this document was filed in the Co. Recorders office at \_\_\_\_\_ M. on the \_\_\_\_\_ day of \_\_\_\_\_ A.D., 20\_\_\_\_

County Recorder \_\_\_\_\_

By \_\_\_\_\_, Deputy

DOCUMENT NO. \_\_\_\_\_

STATEMENT OF EVIDENCE

The East Corner of Section 17, Township 116 North, Range 39 West of the 5th Principal Meridian.

U.S. General Land Office notes show corner marked a wood post in a mound with pits as per instructions. (1865)

In 1866, W.J. Neely and E.N. Darling established the lines of this township, as per the information on the copy of the original Township Plat as provided by the Register of Deeds. No other information exists was able to be found. Original notes were unable to be found.

On 1-4-12, a survey crew from Ulteig Engineers found and accepted an illegible capped rebar, and set new ties as shown. Since no public record is available for this monument, it is the opinion of Ulteig Engineers that the location of this monument correctly perpetuates the position of the original corner based upon local use and occupation, as well as corroborative evidence in the form of distances to adjacent corners.

Ulteig Engineers contacted the following for survey information:

Yellow Medicine County Recorder's Office  
Yellow Medicine County Highway Engineer's Office  
Chippewa County Recorder's Office  
Chippewa County Highway Engineer's Office  
Marihart Land Surveying  
K.B. MacKichan and Associates, Inc.  
Bonnema Surveys of Willmar  
West Central Land Services, Inc. of Willmar

N/C

Ulteig  
5701 S. Corporate Place  
Sioux Falls SD 57108

Doc# 254406 Fee: \$0.00 2 Pages

Property & Public Services  
Property Records Division  
Yellow Medicine County, Minnesota

I hereby certify that the within instrument  
was filed on January 13, 2012 at 10:05 AM

Janel Timm, Yellow Medicine County Recorder

By Debra Blood Deputy

# CERTIFICATE OF LOCATION OF GOVERNMENT CORNER

#5 MEANDER Corner of Section 29, Township 116 N, Range 39 W, 5th P.M.

STATE OF MINNESOTA, County of YELLOW MEDICINE

At the corner location shown on the sketch:

On \_\_\_\_\_ found a \_\_\_\_\_  
DATE

left monument as found,  lowered monument,  removed monument (explain)

On 10/28/93 Placed a 3/4" x 24" REBAR WITH ALUMINUM CAP STAMPED: "DNR SURVEY MARKER"  
DATE  
FLUSH WITH GROUND. SET A STEEL FENCE POST 0.5' EAST OF MONUMENT.



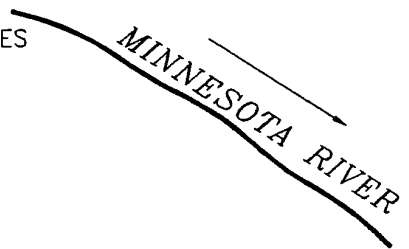
### SKETCH OF REFERENCE TIES

DNR NAIL & DISC  
EAST SIDE  
NORTHERLY 12"  
TRUNK OF  
DOUBLE BOX ELDER  
(UP 0.5')  
N 20° W  
21.80'

DNR NAIL & DISC  
SOUTHEAST SIDE  
12" TRUNK OF  
DOUBLE BOX ELDER  
(UP 1.0')  
S 70° W  
3.57'

DNR NAIL & DISC  
NORTHEAST SIDE  
4" BOX ELDER  
(UP 0.5')  
S 25° E  
20.69'

NOTE:  
MONUMENT IS:  
100' SOUTH OF THE SOUTHERLY  
BANK OF THE MINNESOTA RIVER.



MINNESOTA  
STATE PLANE  
COORDINATES  
SOUTH ZONE  
1927 DATUM  
X=1594101.39  
Y=669529.21

NOT TO SCALE  
BEARINGS OBSERVED WITH A COMPASS

Statement of evidence relative to this corner location is on back of page.

DATE 01/04/93  
FILE COW00624

I hereby certify that this document and the data contained herein was prepared by me or under my direct supervision.

Bruce W. Shoppell 1/10/94  
SIGNATURE DATE

Registration No. 17003

Land Surveyor,  Professional Engineer  
 County Surveyor,  County Engineer

OFFICE OF THE COUNTY RECORDER

County of Yellow Medicine

I hereby certify that this document was filed in the Co. recorders office at 8:15 A.M. on the 25 day of July A.D., 1994

County Recorder Norman A. Grotz

By \_\_\_\_\_, Deputy

DOCUMENT NO. 207218

Meander Corner Number 5 of Section 29, Township 116 North, Range 39 West, Page 1 of 2

The DNR Bureau of Engineering contacted the following for survey information:

Minnesota Secretary of State's Office  
Yellow Medicine County Recorder's Office  
Yellow Medicine County Highway Engineer's Office  
Montevideo City Engineer's Office  
K.B. MacKichan and Associates, Inc. of Redwood Falls  
Bonnema Surveys of Willmar  
West Central Land Services, Inc. of Willmar

- 1865 U.S General Land Office notes obtained from the Secretary of State's Office show corner marked a wood post in a mound with pits as per instructions. The corner is shown:  
36.78 chains(2427.48') from the northeast corner of Section 32
- 1891 June, L.R. Moyer's Field Book 7, page 32, obtained from the Montevideo City Engineer's Office shows a 24" by 16" by 5" stone at corner but does not indicate if found or set. The corner is shown:  
2425.5 feet from the northeast corner of Section 32  
1105.5 feet from a 12" by 10" by 8" stone at the east sixteenth corner of the southeast quarter of Section 29
- 1892 June, L.R. Moyer's Field Book 7, page 24, obtained from the Montevideo City Engineer's Office shows a symbol for a monument at corner but does not indicate what was found or set. The corner is shown:  
2425.5 feet from the northeast corner of Section 32  
1105.5 feet from a post that is on the east line of Section 29
- 1898 AUDITOR'S SUBDIVISION NO. 1 as surveyed by John Norgaard, County Surveyor, obtained from the County Recorder's Office shows corner but does not indicate what was found or set. The corner is shown:  
2427.5 feet from the northeast corner of Section 32
- 1913 June, page 294 of a Surveyor's Record Book obtained from the County Recorder's Office contains a survey, by John Norgaard, County Surveyor. Survey does not show corner but a point on the east line of Section 29 and on the center line of a road is shown:  
2070 feet from the northeast corner of Section 32
- 1933 February, page 352 of a Surveyor's Record Book obtained from the County Recorder's Office contains a survey, by John Norgaard, County Surveyor. Survey shows the east line of Section 29 but no information is given about the Meander Corner.

**Meander Corner Number 5 of Section 29, Township 116 North, Range 39 West, Page 2 of 2**

**No** A Certificate of Survey for land in Sections 29 and 32 obtained from West Central Land  
**Date** Services, Inc. shows that an iron monument was found on the east line of Section 29, 505.17 feet from the southeast corner.

Survey also shows that a plastic capped iron pipe was set on the northerly extension of a line from the southeast corner of Section 29 thur the found monument 505.17 feet north. The iron pipe is shown:

1570.36 feet from the southeast corner of Section 29  
on the center line of a northwest-southeast Township Road  
in line with a fence south

No information is given about the meander corner.

**1993** October, DNR Bureau of Engineering visited the area of the corner and searched for but found no occupation lines.

Also, visited the area of the east sixteenth corner of the southeast quarter of Section 29 and found numerous boulders that have been placed by quarry operations, therefore did NOT search for record stone.

Searched for and found the record iron pipe on the center line of a road and on the east line of Section 29. The iron pipe was found to be:

2075.83 feet from the northeast corner of Section 32

Computed a position for the meander corner as follows:

- A) on the northerly extension of a line from the northeast corner of Section 32 thru the found iron pipe on the center line of road
- B) 2427.48 feet (GLO distance) from the northeast corner of Section 32

Conducted a field search for the record stone at the computed position for the meander corner as follows:

probed an 8 foot east-west by 10 feet north-south area to a depth of 2 to 3 feet - no stones were found

Analysis of the above information led the DNR Bureau of Engineering to conclude that the computed position using the northeast corner of Section 32 and a found iron pipe on the center of road and on the east line of Section 29 marks the location of the corner. Set a DNR Survey Marker to mark the location of the corner.

Property & Public Services  
Property Records Division  
Yellow Medicine County, Minnesota  
I hereby certify that the within instrument  
was filed on January 7, 2014 at 9:45 AM

Janel Timm, Yellow Medicine County Recorder

By Kelly Kueger Deputy

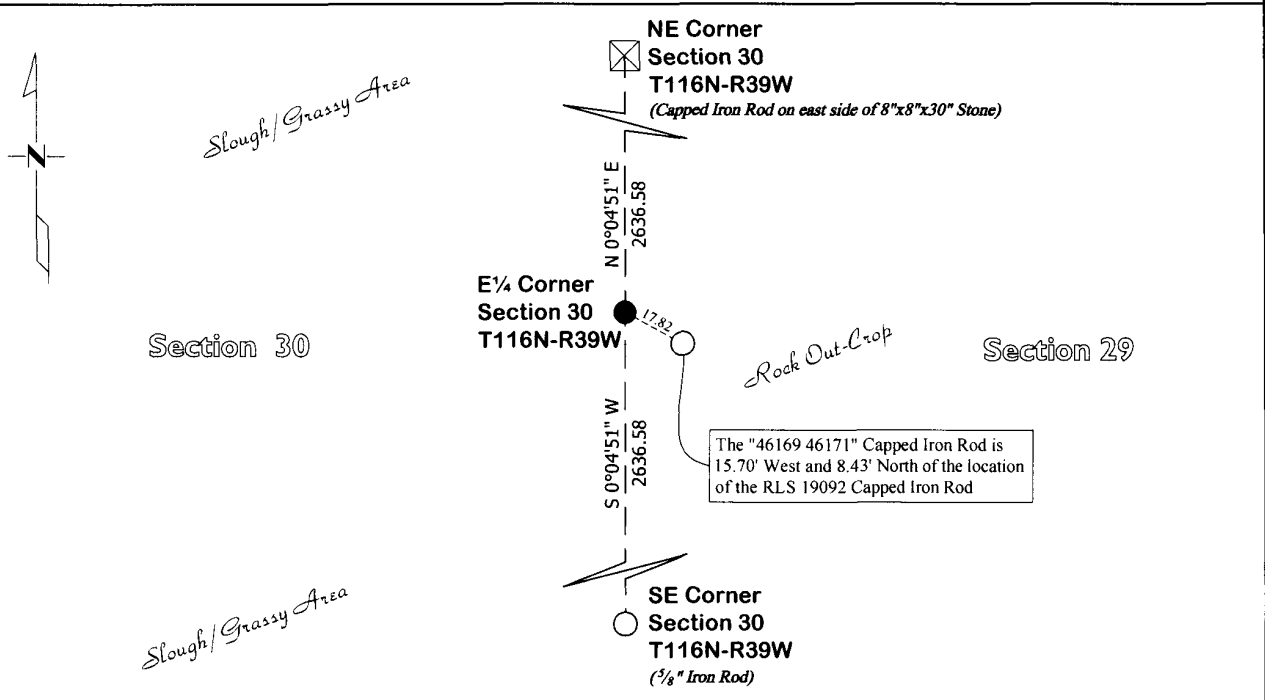
### CERTIFICATE OF LOCATION OF GOVERNMENT CORNER

East Quarter Corner of Section 30, Township 116, Range 39

Fifth Principal Meridian, State of Minnesota, County of Yellow Medicine

At the corner location shown on the sketch:

- On June 27, 2013 found RLS 19092 Capped Iron Rod  
DATE
- left monument as found       lowered monument       removed monument (explain)
- On Aug. 30, 2013 placed an Iron Rod with a "46169 46171" stamped plastic cap  
DATE



Statement of evidence for this corner location is on back of this page.

I hereby certify that this survey, plan, or report was prepared by me or under my direct supervision and that I am a duly Licensed Land Surveyor under the laws of the state of Minnesota.

Signature Matthew Runke  
Date 1/3/14

Typed or Printed Name: Matthew D. Runke  
Reg. No. 46171

# **STATEMENT OF EVIDENCE**

## **East Quarter Corner Section 30, T116N-R39W**

- 1865 Davis & Webb were contracted by the United States Government Land Office to perform the Original Public Land Survey in this township. They record in their field notes, "Set a post for 1/4 Sec. Cor. with mound & pits as per instructions."
- Nov. 11, 1931 John Norgaard, County Surveyor, records in the County Surveyor's Record Book, page 538, dimensions to this corner position but doesn't mention what type of monument was found.
- 1961 Minnesota Department of Transportation Highway Right of Way Map No. 3-62A, shows this corner position but does not mention what type of monument was found.
- Unknown Date Roy Marhart, LS 19092, while performing work in this section, set a Capped Iron Rod at this corner position.
- Nov. 13, 2012 Matthew D. Runke, LS 46171, searched with a metal locator and found a RLS 19092 capped iron rod near this corner position. He probed an area extending 2.0' North, 2.0' East, 2.0' South, and 2.0' West of the capped iron rod, which was very difficult due to the rocky ground in this area, and did not find any stones that appeared to be placed by a land surveyor. Runke then searched with a metal locator and probed an area extending 3.0' North, 2.0' East, 2.0' South, and 4.0' West of the location of the straight line and Norgaard prorated distance along the east line of this section. Again due to the rocky ground many stones were probed out 3" to 4" below the ground but no stones that appeared to have been placed by a land surveyor. Roy Marhart was contacted and he used different corner positions for the northeast and southeast corners of this section to place his monument. After reviewing all the section corner evidence along the east line of this section, an Iron Rod with a "46169 46171" stamped plastic cap was set midway and on-line between the found stone at the northeast corner and the 5/8" Iron Rod at the southeast corner of this section as was done by Norgaard in his 1931 survey. This position is 15.70' west and 8.43' north of Marhart's Capped Iron Rod.

Property & Public Services  
Property Records Division  
Yellow Medicine County, Minnesota  
I hereby certify that the within instrument  
was filed on January 7, 2014 at 9:35 AM

Janel Timm, Yellow Medicine County Recorder

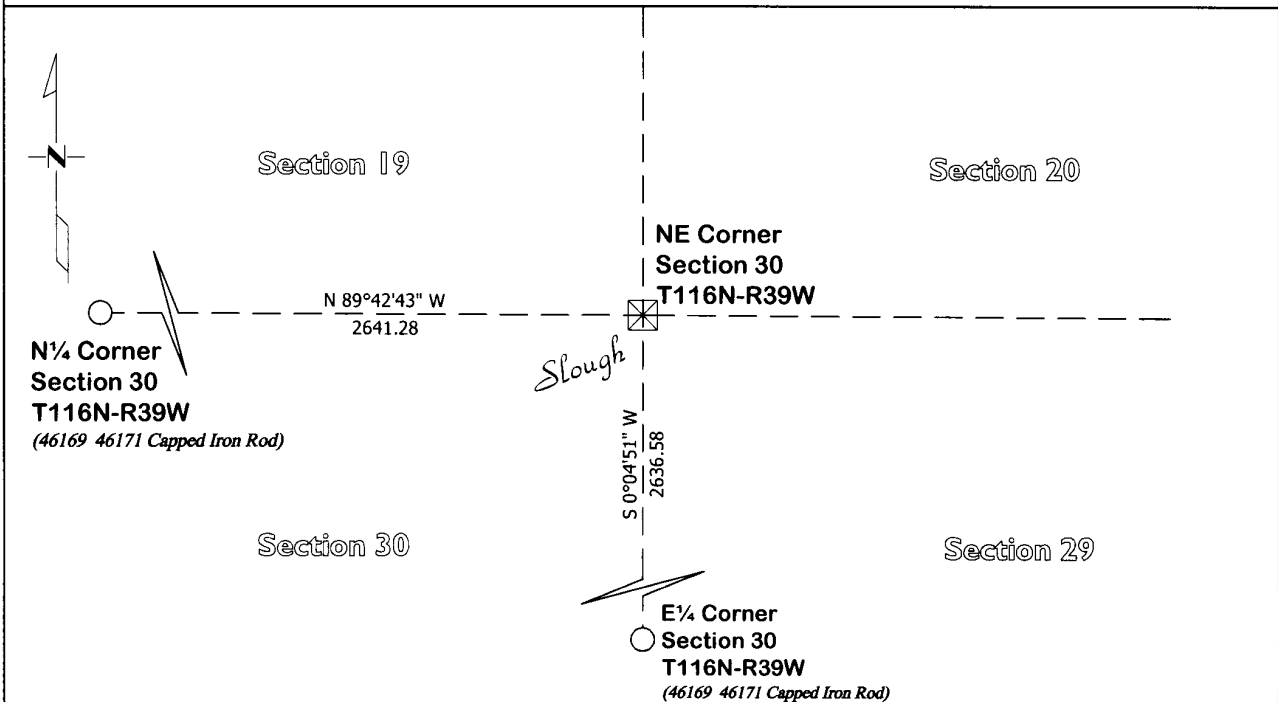
By Kelly Kauger Deputy

### CERTIFICATE OF LOCATION OF GOVERNMENT CORNER

Northeast Corner of Section 30, Township 116, Range 39  
Fifth Principal Meridian, State of Minnesota, County of Yellow Medicine

At the corner location shown on the sketch:

- On Aug. 21, 2013 found 8" x 8" x 30" Square Cut Stone lying flat in a slough  
DATE
- left monument as found       lowered monument       removed monument (explain)
- On Nov. 26, 2013 placed an Iron Rod with a "46169 46171" stamped plastic cap on the east side of the  
DATE 8" x 8" x 30" Stone



Statement of evidence for this corner location is on back of this page.

I hereby certify that this survey, plan, or report was prepared by me or under my direct supervision and that I am a duly Licensed Land Surveyor under the laws of the state of Minnesota.

Signature Matthew Runke  
Date 1/2/14

Typed or Printed Name: Matthew D. Runke  
Reg. No. 46171



# **STATEMENT OF EVIDENCE**

## **Northeast Corner Section 30, T116N-R39W**

- 1865 Davis & Webb were contracted by the United States Government Land Office to perform the Original Public Land Survey in this township. They record in their field notes, "Set a post for corner to section 19, 20, 29 & 30 in mound with pits as per instructions"
- 1915 John Norgaard, County Surveyor, records in the County Surveyor's Record Book, page 352, dimensions to this corner position but doesn't mention what type of monument was found.
- 1919 John Norgaard, County Surveyor, records in the County Surveyor's Record Book, page 417, dimensions to this corner position but doesn't mention what type of monument was found.
- Nov. 11, 1931 John Norgaard, County Surveyor, records in the County Surveyor's Record Book, page 538, dimensions to this corner position but doesn't mention what type of monument was found.
- Nov. 13, 2012 Matthew D. Runke, LS 46171, searched with a metal locator and did not find any existing monumentation at the corner position. Runke then probed an area extending 4.0' North, 4.0' East, 4.0' South, and 2.0' West of a position developed by using the 1919 & 1931 survey dimensions and found monuments along the north line of this section. An 8"x8"x30" square cut stone was found, lying flat just below the slough bottom. This stone is typical of the type of monument John Norgaard would have placed to perpetuate section corner positions, and was apparently set in 1919 as part of his survey. This stone fits well with the 1919 & 1931 Norgaard survey dimensions along the north line of this section. The 8"x8"x30" square cut stone appears to be the best evidence of the location of this corner position. An Iron Rod with a "46169 46171" stamped plastic cap was set along the east side of the stone, which was the bottom side of the stone.

Doc# 259304 Fee: \$0.00 2 Pages

Property & Public Services  
Property Records Division  
Yellow Medicine County, Minnesota  
I hereby certify that the within instrument  
was filed on January 7, 2014 at 9:30 AM

Janel Timm, Yellow Medicine County Recorder

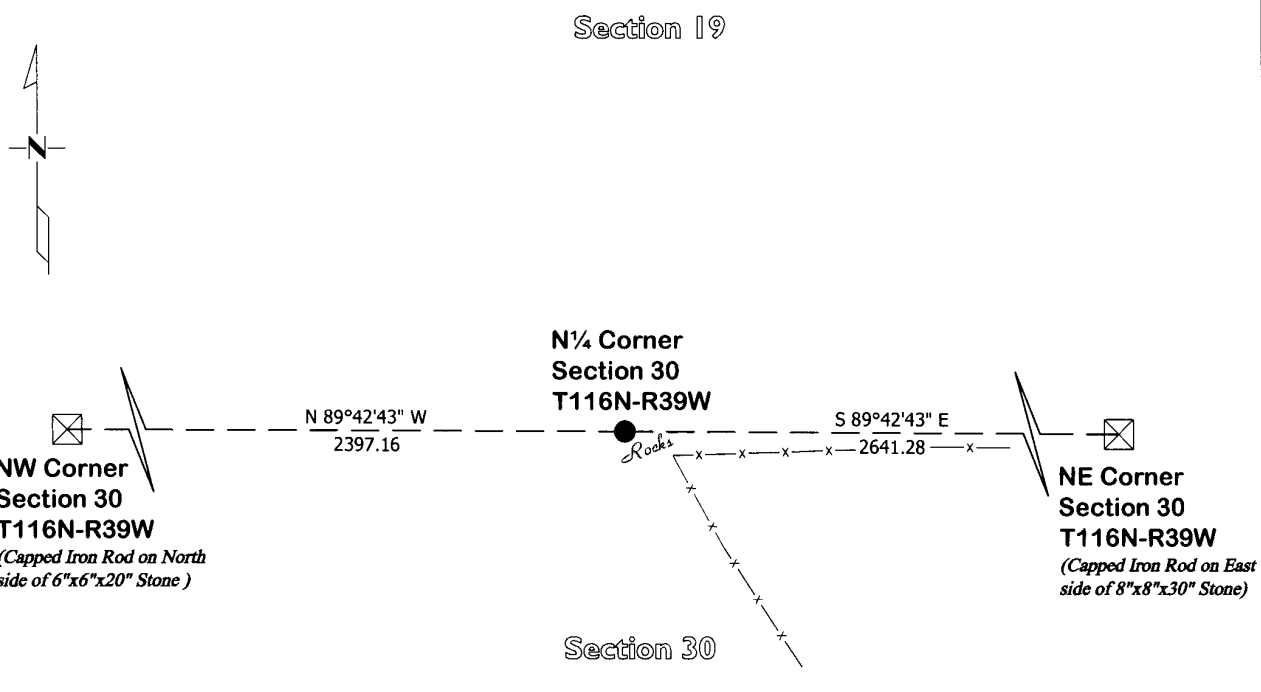
By Kelly Kanger Deputy

### CERTIFICATE OF LOCATION OF GOVERNMENT CORNER

North Quarter Corner of Section 30, Township 116, Range 39  
Fifth Principal Meridian, State of Minnesota, County of Yellow Medicine

At the corner location shown on the sketch:

- On Aug. 21, 2013 found Metal under large rock  
DATE
- left monument as found       lowered monument       removed monument (explain)
- On Nov. 26, 2013 placed an Iron Rod with a "46169 46171" stamped plastic cap, Hammerdrilled into the  
DATE stone over the metal reading



Statement of evidence for this corner location is on back of this page.

I hereby certify that this survey, plan, or report was prepared by me or under my direct supervision and that I am a duly Licensed Land Surveyor under the laws of the state of Minnesota.

Signature Matthew D. Runke  
Date 11/2/14

Typed or Printed Name: Matthew D. Runke  
Reg. No. 46171

# **STATEMENT OF EVIDENCE**

## **North Quarter Corner Section 30, T116N-R39W**

- 1865 Davis & Webb were contracted by the United States Government Land Office to perform the Original Public Land Survey in this township. They record in their field notes, "Set a post for ¼ section corner in mound & pits as per instructions"
- 1919 John Norgaard, County Surveyor, records in the County Surveyor's Record Book, page 417, dimensions to this corner position but doesn't mention what type of monument was found.
- Nov. 11, 1931 John Norgaard, County Surveyor, records in the County Surveyor's Record Book, page 538, dimensions to this corner position but doesn't mention what type of monument was found.
- 1961 Minnesota Department of Transportation Highway Right of Way Map No. 3-62A, notes a "wood stake in p." and dimensions from the highway center line to this corner position.
- March 19, 1998 Duane A. Bonnema, LS 14895, performed a survey in this section, but does not mention what type of monument was found at this corner position.
- Unknown Dates Roy Manhart, LS 19092, performed surveys in this section, but does not mention what type of monument was found at this corner position.
- Nov. 13, 2012 Matthew D. Runke, LS 46171, searched with a metal locator and found a strong metal reading under large stone at ground level. The location was in a rock pile and we were unable to remove or dig around the large stone to see what the metal reading was. The metal & large stone fit within 1.3' of the 1919 and 1931 Norgaard survey dimensions from the found stones at the northeast and northwest corner of this section. This position also fits well with the 1961 MNDOT dimensions to the center line of the Highway. The strong metal reading under a large stone appears to be the best evidence of the location of this corner position and an Iron Rod with a "46169 46171" stamped plastic cap was hammer drilled into the top of the stone over the metal reading.

# CERTIFICATE OF LOCATION OF GOVERNMENT CORNER

E 1/4 Corner of Section 30, Township 116, Range 39, 5TH P.M.

STATE OF MINNESOTA, County of YELLOW MEDICINE

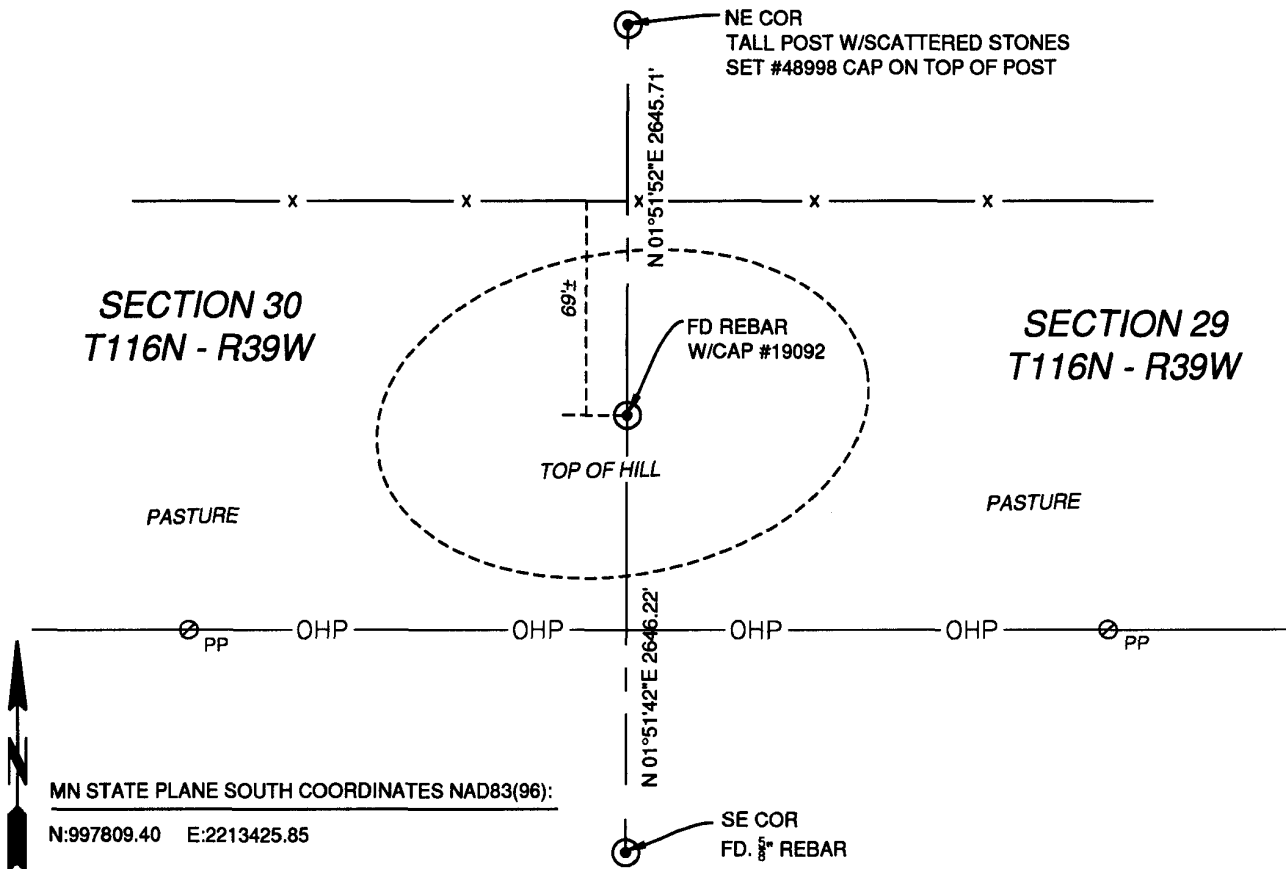
At the corner location shown on the sketch:

On 1-4-2012 found a REBAR W/CAP #19092 AT GROUND SURFACE

left monument as found,  lowered monument,  removed monument (explain)

On \_\_\_\_\_ placed a \_\_\_\_\_

## SKETCH OF REFERENCE TIES



Statement of evidence relative to this corner location is on back of page.

I hereby certify that this document and the data contained herein was prepared by me or under my direct supervision.

*E. Meyer*  
SIGNATURE

1/4/2012  
DATE

Registration No. 48998

- Land Surveyor,  Professional Engineer  
 County Surveyor,  County Engineer

OFFICE OF THE COUNTY RECORDER

County of \_\_\_\_\_

I hereby certify that this document was filed in the Co. Recorders office at \_\_\_\_\_ M. on the \_\_\_\_\_ day of \_\_\_\_\_ A.D., 20\_\_\_\_

County Recorder \_\_\_\_\_

By \_\_\_\_\_, Deputy

DOCUMENT NO. \_\_\_\_\_

**STATEMENT OF EVIDENCE**

The East Quarter Corner of Section 30, Township 116 North, Range 39 West of the 5th Principal Meridian.

U.S. General Land Office notes show corner marked a wood post in a mound with pits as per instructions. (1865)

In 1865, W.J. Neely established the lines of this township, as per the information on the copy of the original Township Plat as provided by the Register of Deeds. No other information exists was able to be found. Original notes were unable to be found.

On 1-4-12, a survey crew from Ulteig Engineers found and accepted a Rebar with cap #19092, and set new ties as shown. Monument was accepted in a non-filed survey by Roy Marihart. Since no public record is available for this monument, it is the opinion of Ulteig Engineers that the location of this monument correctly perpetuates the position of the original corner based upon local use and occupation, as well as corroborative evidence in the form of distances to adjacent corners.

Ulteig Engineers contacted the following for survey information:

Yellow Medicine County Recorder's Office  
Yellow Medicine County Highway Engineer's Office  
Chippewa County Recorder's Office  
Chippewa County Highway Engineer's Office  
Marhart Land Surveying  
K.B. MacKichan and Associates, Inc.  
Bonnema Surveys of Willmar  
West Central Land Services, Inc. of Willmar

*N/C*

*Ulteig  
5701 S. Corporate Place  
Sioux Falls, SD 57108*

Doc# 254405 Fee: \$0.00 2 Pages  
Property & Public Services  
Property Records Division  
Yellow Medicine County, Minnesota  
I hereby certify that the within instrument  
was filed on January 13, 2012 at 10:00 AM

Janel Timm, Yellow Medicine County Recorder

By *Debra Blum* Deputy

# CERTIFICATE OF LOCATION OF GOVERNMENT CORNER

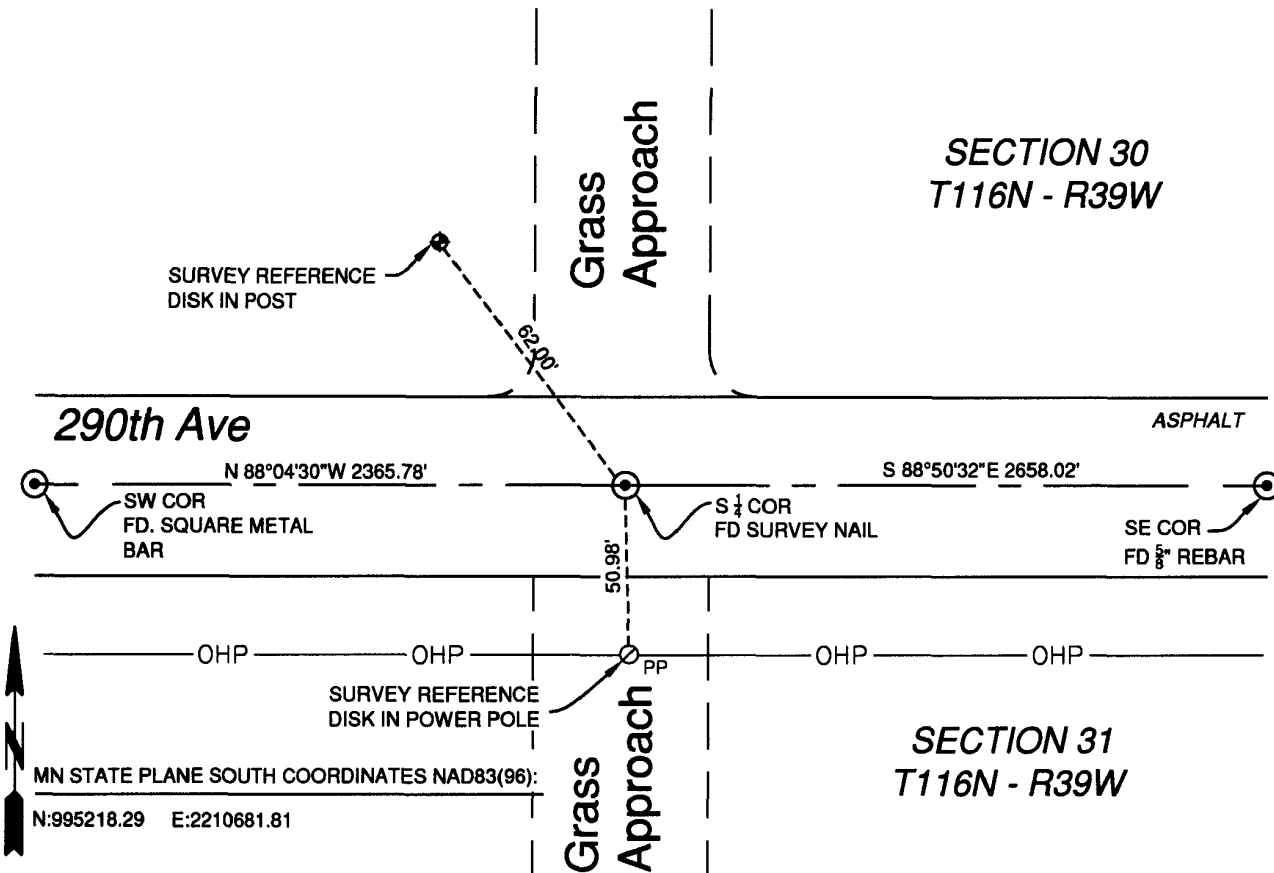
S 1/4 Corner of Section 30, Township 116, Range 39, 5TH P.M.

STATE OF MINNESOTA, County of YELLOW MEDICINE

At the corner location shown on the sketch:

- On 1-4-2012 found a SURVEY NAIL AT THE ASPHALT SURFACE
- left monument as found,  lowered monument,  removed monument (explain)
- On \_\_\_\_\_ placed a \_\_\_\_\_

## SKETCH OF REFERENCE TIES



Statement of evidence relative to this corner location is on back of page.

I hereby certify that this document and the data contained herein was prepared by me or under my direct supervision.

*E. C. Meyer*      1/4/2012  
SIGNATURE      DATE

Registration No. 48998

- Land Surveyor,  Professional Engineer
- County Surveyor,  County Engineer

OFFICE OF THE COUNTY RECORDER

County of \_\_\_\_\_  
I hereby certify that this document was filed in the Co. Recorders office at \_\_\_\_\_ M. on the \_\_\_\_\_ day of \_\_\_\_\_ A.D., 20\_\_\_\_

County Recorder \_\_\_\_\_

By \_\_\_\_\_, Deputy

DOCUMENT NO. \_\_\_\_\_

STATEMENT OF EVIDENCE

The South Quarter Corner of Section 30, Township 116 North, Range 39 West of the 5th Principal Meridian.

U.S. General Land Office notes show corner marked a wood post in a mound with pits as per instructions. (1865)

In 1865, W.J. Neely established the lines of this township, as per the information on the copy of the original Township Plat as provided by the Register of Deeds. No other information exists was able to be found. Original notes were unable to be found.

On 1-4-12, a survey crew from Ulteig Engineers found and accepted a survey nail, and set new ties as shown. Monument was accepted in a non-filed survey by Roy Marihart. Since no public record is available for this monument, it is the opinion of Ulteig Engineers that the location of this monument correctly perpetuates the position of the original corner based upon local use and occupation, as well as corroborative evidence in the form of distances to adjacent corners.

Uteig Engineers contacted the following for survey information:

Yellow Medicine County Recorder's Office  
Yellow Medicine County Highway Engineer's Office  
Chippewa County Recorder's Office  
Chippewa County Highway Engineer's Office  
Marihart Land Surveying  
K.B. MacKichan and Associates, Inc.  
Bonnema Surveys of Willmar  
West Central Land Services, Inc. of Willmar

Nsc Ulteig  
5701 S. Corporate  
place  
Sioux Falls SD  
57108

Doc# 254404 Fee: \$0.00 2 Pages

Property & Public Services  
Property Records Division  
Yellow Medicine County, Minnesota  
I hereby certify that the within instrument  
was filed on January 13, 2012 at 9:55 AM

Janel Timm, Yellow Medicine County Recorder

By Debra Blood Deputy

# CERTIFICATE OF LOCATION OF GOVERNMENT CORNER

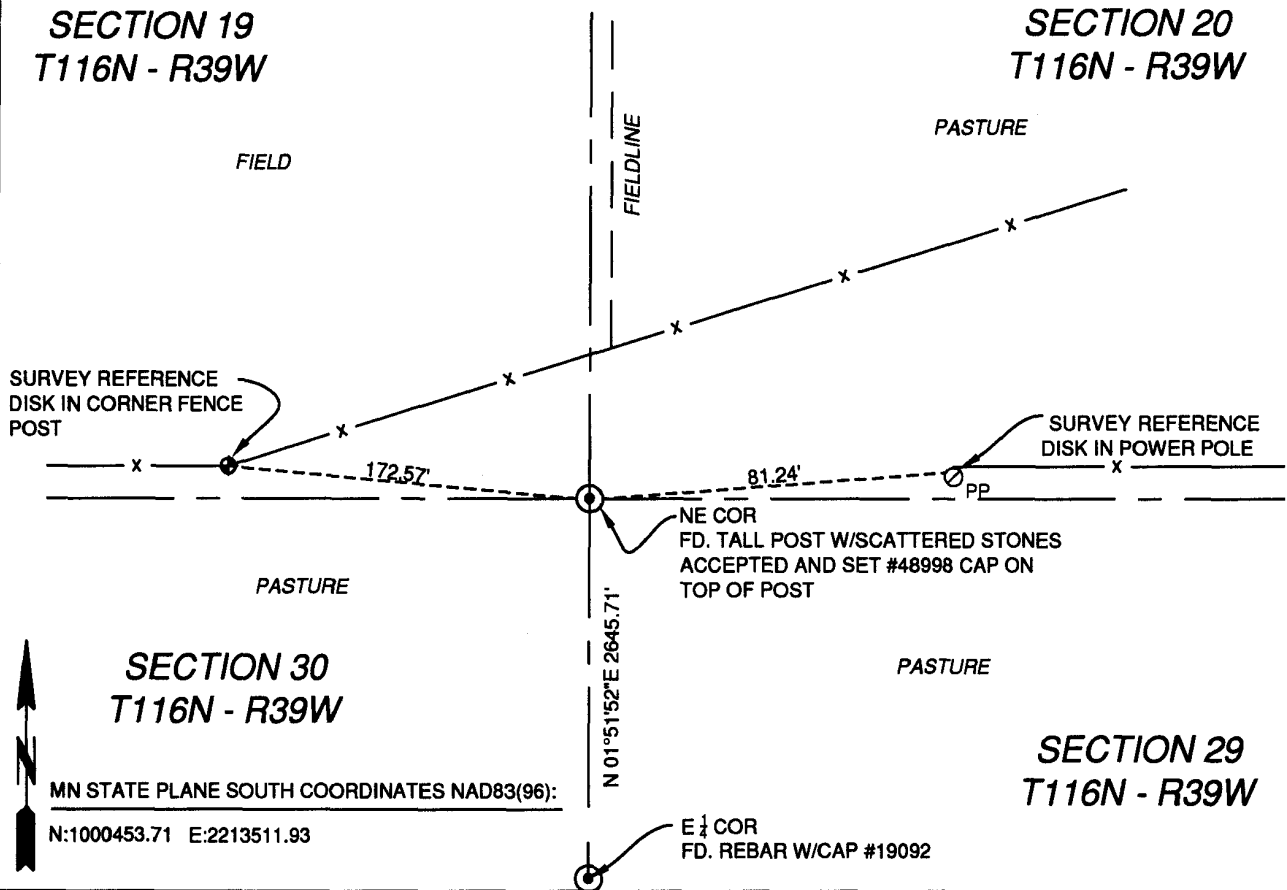
NE Corner of Section 30, Township 116, Range 39, 5TH P.M.

STATE OF MINNESOTA, County of YELLOW MEDICINE

At the corner location shown on the sketch:

- On 1-4-2012 found a TALL POST WITH SCATTERED STONES
- left monument as found,  lowered monument,  removed monument (explain)
- On 1-4-2012 placed a #48998 CAP ON TOP OF ACCEPTED POST

## SKETCH OF REFERENCE TIES



Statement of evidence relative to this corner location is on back of page.

I hereby certify that this document and the data contained herein was prepared by me or under my direct supervision.

*Eric Meyer*      1/4/2012  
SIGNATURE      DATE

Registration No. 48998

- Land Surveyor,  Professional Engineer
- County Surveyor,  County Engineer

OFFICE OF THE COUNTY RECORDER  
County of \_\_\_\_\_

I hereby certify that this document was filed in the Co. Recorders office at \_\_\_\_\_ M. on the \_\_\_\_\_ day of \_\_\_\_\_ A.D., 20\_\_\_\_

County Recorder \_\_\_\_\_

By \_\_\_\_\_, Deputy

DOCUMENT NO. \_\_\_\_\_



STATEMENT OF EVIDENCE

The Northeast Corner of Section 30, Township 116 North, Range 39 West of the 5th Principal Meridian.

U.S. General Land Office notes show corner marked a wood post in a mound with pits as per instructions. (1865)

In 1865, W.J. Neely established the lines of this township, as per the information on the copy of the original Township Plat as provided by the Register of Deeds. No other information exists was able to be found. Original notes were unable to be found.

On 1-4-12, a survey crew from Uteig Engineers found and accepted a tall post with scattered stones, placed a #48998 cap on top of the post, and set new ties as shown. Monument was accepted in a non-filed survey by Roy Marihart. Since no public record is available for this monument, it is the opinion of Uteig Engineers that the location of this monument correctly perpetuates the position of the original corner based upon local use and occupation, as well as corroborative evidence in the form of distances to adjacent corners.

Uteig Engineers contacted the following for survey information:

- Yellow Medicine County Recorder's Office
- Yellow Medicine County Highway Engineer's Office
- Chippewa County Recorder's Office
- Chippewa County Highway Engineer's Office
- Marihart Land Surveying
- K.B. MacKichan and Associates, Inc.
- Bonnema Surveys of Willmar
- West Central Land Services, Inc. of Willmar

N/C

Uteig

5701 S. Corporate Place

Sioux Falls SD 57108

Doc# 254403 Fee: \$0.00 2 Pages

Property & Public Services

Property Records Division

Yellow Medicine County, Minnesota

I hereby certify that the within instrument  
was filed on January 13, 2012 at 9:50 AM

Janel Timm, Yellow Medicine County Recorder

By Delores Blom Deputy

# CERTIFICATE OF LOCATION OF GOVERNMENT CORNER

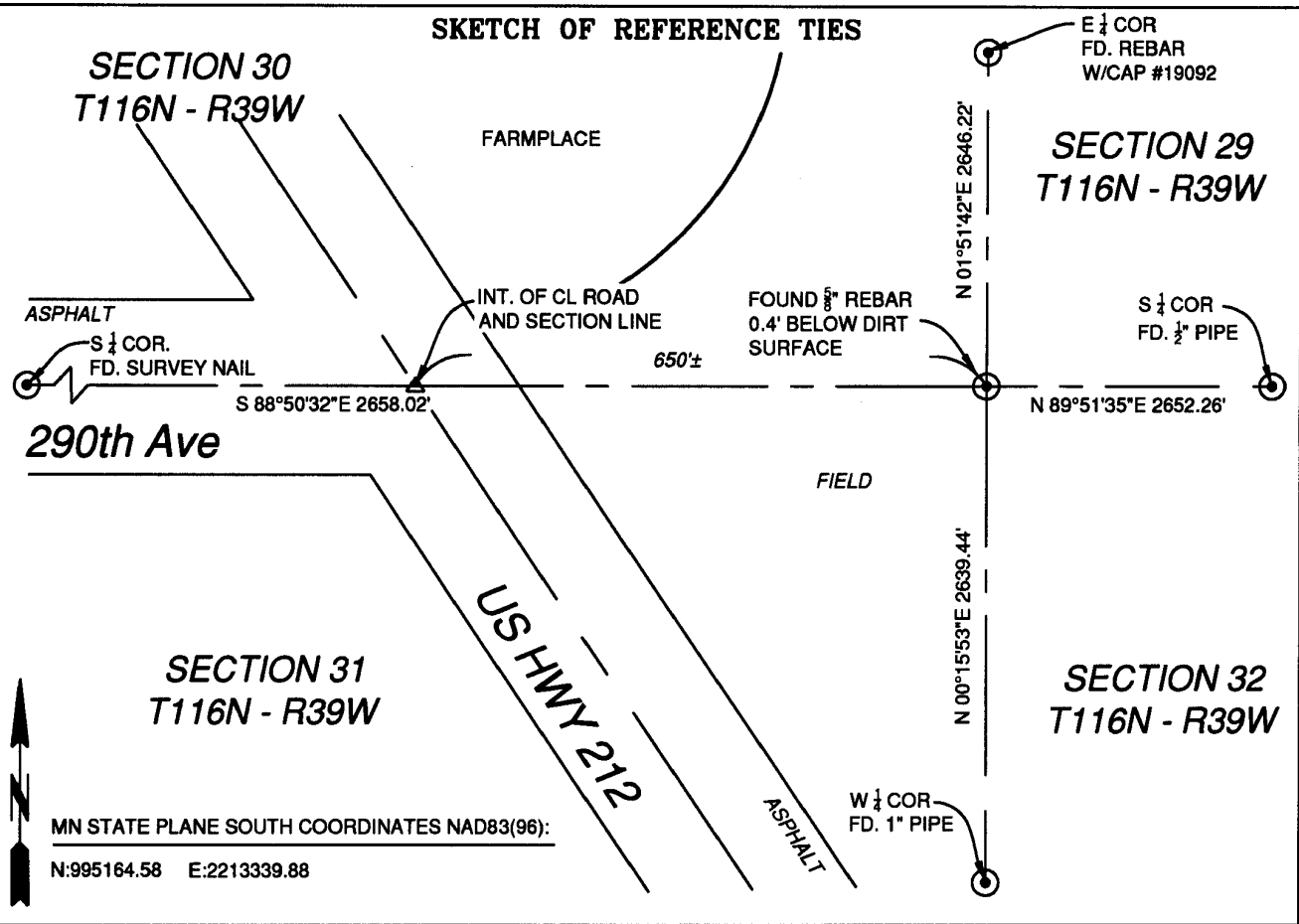
SE Corner of Section 30, Township 116, Range 39, 5TH P.M.

STATE OF MINNESOTA, County of YELLOW MEDICINE

At the corner location shown on the sketch:

- On 1-4-2012 found a 5/8" REBAR 0.4' BELOW DIRT IN A FIELD
- left monument as found,  lowered monument,  removed monument (explain)
- On \_\_\_\_\_ placed a \_\_\_\_\_

### SKETCH OF REFERENCE TIES



Statement of evidence relative to this corner location is on back of page.

I hereby certify that this document and the data contained herein was prepared by me or under my direct supervision.

*E. C. Meyer* SIGNATURE      1/4/2012 DATE

Registration No. 48998

- Land Surveyor,  Professional Engineer
- County Surveyor,  County Engineer

OFFICE OF THE COUNTY RECORDER  
County of \_\_\_\_\_

I hereby certify that this document was filed in the Co. Recorders office at \_\_\_\_\_ M. on the \_\_\_\_\_ day of \_\_\_\_\_ A.D., 20\_\_\_\_

County Recorder \_\_\_\_\_

By \_\_\_\_\_, Deputy

DOCUMENT NO. \_\_\_\_\_

STATEMENT OF EVIDENCE

The Southeast Corner of Section 30, Township 116 North, Range 39 West of the 5th Principal Meridian.

U.S. General Land Office notes show corner marked a wood post in a mound with pits as per instructions. (1865)

In 1865, W.J. Neely established the lines of this township, as per the information on the copy of the original Township Plat as provided by the Register of Deeds. No other information exists was able to be found. Original notes were unable to be found.

On 1-4-12, a survey crew from Uiteig Engineers found and accepted a  $\frac{5}{8}$ " Rebar, and set new ties as shown. Monument was accepted in a non-filed survey by Roy Marihart. Since no public record is available for this monument, it is the opinion of Uiteig Engineers that the location of this monument correctly perpetuates the position of the original corner based upon local use and occupation, as well as corroborative evidence in the form of distances to adjacent corners.

Uiteig Engineers contacted the following for survey information:

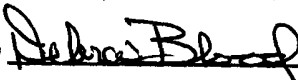
- Yellow Medicine County Recorder's Office
- Yellow Medicine County Highway Engineer's Office
- Chippewa County Recorder's Office
- Chippewa County Highway Engineer's Office
- Marihart Land Surveying
- K.B. MacKichan and Associates, Inc.
- Bonnema Surveys of Willmar
- West Central Land Services, Inc. of Willmar

N/C

Uiteig  
5701 S. Corporate Place  
Sioux Falls, SD 57108

Doc# 254402 Fee: \$0.00 2 Pages  
Property & Public Services  
Property Records Division  
Yellow Medicine County, Minnesota  
I hereby certify that the within instrument  
was filed on January 13, 2012 at 9:45 AM

Janel Timm, Yellow Medicine County Recorder

By  Deputy

Property & Public Services  
Property Records Division  
Yellow Medicine County, Minnesota  
I hereby certify that the within instrument  
was filed on January 7, 2014 at 9:40 AM

Janel Timm, Yellow Medicine County Recorder

By Kelly Kauger Deputy

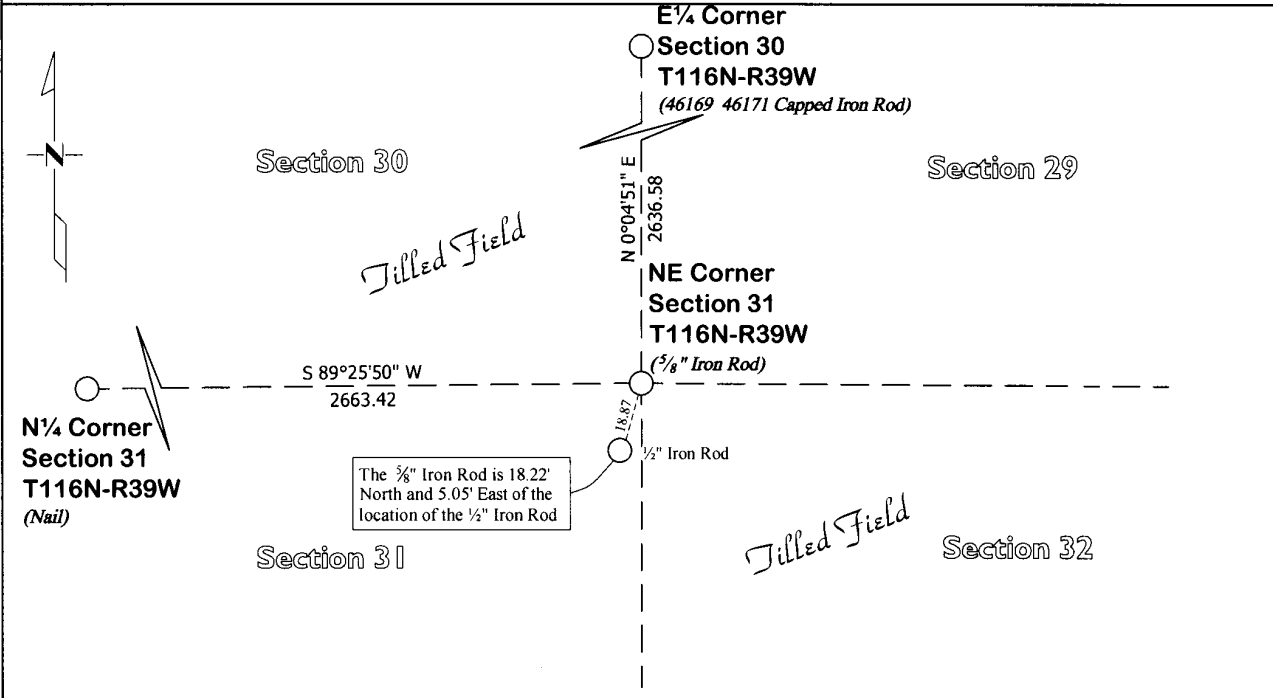
### CERTIFICATE OF LOCATION OF GOVERNMENT CORNER

Northeast Corner of Section 31, Township 116, Range 39

Fifth Principal Meridian, State of Minnesota, County of Yellow Medicine

At the corner location shown on the sketch:

- On June 27, 2013 found a 5/8" Iron Rod and a 1/2" Iron Rod  
DATE
- left monument as found       lowered monument       removed monument (explain)
- On \_\_\_\_\_ placed an \_\_\_\_\_  
DATE



Statement of evidence for this corner location is on back of this page.

I hereby certify that this survey, plan, or report was prepared by me or under my direct supervision and that I am a duly Licensed Land Surveyor under the laws of the state of Minnesota.

Signature Matthew D. Runke  
Date 1/3/14

Typed or Printed Name: Matthew D. Runke  
Reg. No. 46171

## **STATEMENT OF EVIDENCE**

### ***Northeast Corner Section 31, T116N-R39W***

- 1865 Davis & Webb were contracted by the United States Government Land Office to perform the Original Public Land Survey in this township. They record in their field notes, "Set a post for corner to Sections 29, 30, 31 & 32, in mound with pits as per instructions. Bottom of bluffs and enter river bottom."
- Jan. 1892 County Surveyor's Record Book, page 62, notes they found the "old government corner" and dimensions to this corner position.
- Nov. 1912 John Norgaard, County Surveyor, records in the County Surveyor's Record Book, page 278, "found jasper stone monument set by me several years ago" and dimensions to this corner position.
- 1915 John Norgaard, County Surveyor, records in the County Surveyor's Record Book, page 352, dimensions to this corner position but doesn't mention what type of monument was found.
- June 1918 John Norgaard, County Surveyor, records in the County Surveyor's Record Book, page 409, dimensions to this corner position but doesn't mention what type of monument was found.
- April 1931 John Norgaard, County Surveyor, records in the County Surveyor's Record Book, page 277, "found jasper stone monument set by me 13 years ago" and dimensions to this corner position.
- Nov. 11, 1931 John Norgaard, County Surveyor, records in the County Surveyor's Record Book, page 538, dimensions to this corner position but doesn't mention what type of monument was found.
- 1961 Minnesota Department of Transportation Highway Right of Way Map No. 3-62A, dimensions to this corner position but does not mention what type of monument was found.
- Unknown Dates Roy Manhart, LS 19092, while doing surveys in Sections 30, 31, and 32 notes "found corner monument" and dimensions to this corner position.
- Nov. 13, 2012 Matthew D. Runke, LS 46171, searched with a metal locator and found a 5/8" iron rod 1.5' deep at this corner position. He also found a 1/2" Iron Rod 18.22' south and 5.05' West of this corner position. Runke then probed an area extending 2.0' North, 2.0' South, 2.0' East and 2.0' West of each Iron Rod and did not find the Norgaard Jasper stone as called for. These Iron Rods land in a tilled field and it appears the stone has been destroyed by the farm tillage. The found 1/2" Iron Rod was used by Manhart for the surveys he performed in Sections 30, 31, & 32. There is no record of when the 5/8" Iron rod was set, but it fits very well with all of the County Survey Record dimensions, recorded on surveys done between 1892 & 1931. It appears that the 5/8" Iron Rod, is the best evidence as to the location of the section corner, and was left as found.

# CERTIFICATE OF LOCATION OF GOVERNMENT CORNER

W $\frac{1}{4}$  Corner of Section 31, Township 116, Range 39, 5th P.M.

STATE OF MINNESOTA, County of Yellow Medicine

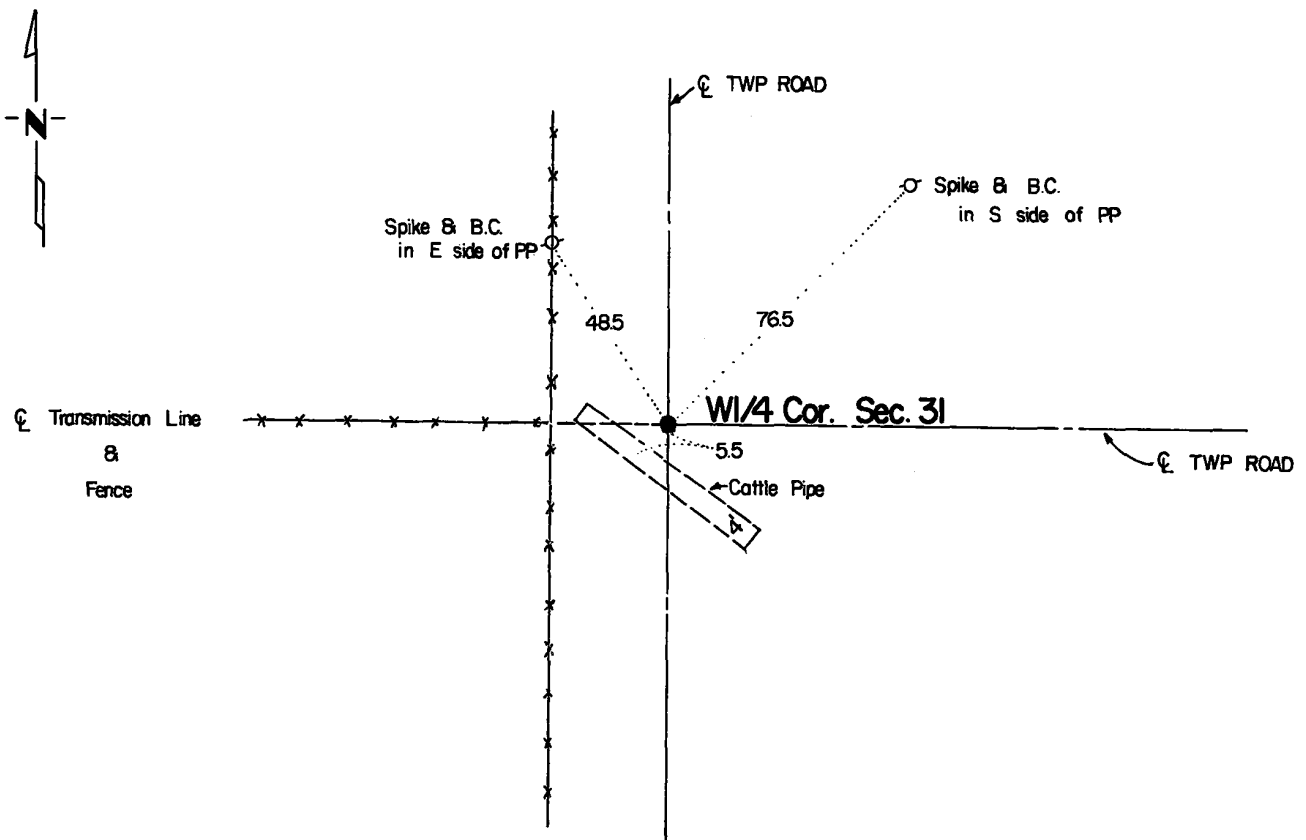
At the corner location shown on the sketch:

On Oct. 25, 1983 found a 2" x 2" Square Iron 30" below road surface  
DATE

left monument as found,  lowered monument,  removed monument (explain)

On Oct. 25, 1983 placed a Capped Iron Pipe  
DATE

### SKETCH OF REFERENCE TIES



Statement of evidence relative to this corner location is on back of page.

RECORDED  
GRANTED  
GRANTED  
INDEXED

I hereby certify that this document and the data contained herein was prepared by me or under my direct supervision.

Duane A. Barrows Dec. 1, 1983  
SIGNATURE DATE

Registration No. 14895

- Land Surveyor,  Professional Engineer
- County Surveyor,  County Engineer

OFFICE OF THE REGISTER OF DEEDS  
County of Yellow Medicine

I hereby certify that this document was filed in the Reg. of Deeds office at 10:00 A.M. on the 23 day of March A.D., 19 84

Register of Deeds Norman J. Ordahl, Co. Recorder

By Kay Nordahl, Deputy

DOCUMENT NO. 183656

Statement of Evidence:

- June 1895 Original Government Land Office survey by Davis & Webb.
- Jan. 17, 1905 John Norgaard, County Surveyor, while doing a survey for a "town road" (County Surveyors Record page 189) makes reference to the West  $\frac{1}{4}$  post Section 30.
- 1900 John Norgaard, County Surveyor, remonumented many section corners throughout Yellow Medicine County, although he apparently did not remonument the Quarter Corners.
- May 18, 1918 John Norgaard, County Surveyor, records in the County Surveyors Record page 403 "E $\frac{1}{4}$  post- Found Iron Rod set by me at equal distance and on line between Section Corner in 1900."
- Oct. 25, 1983 Duane A. Bonnema (RLS 14895) found a 2" x 2" square hollow iron 30" below road surface. measured 2643± to intersection to North (County Surveyors Record page 403) and measured 1324± South to fenceline (County Surveyors Record page 403.) Accepted as the corner placed by John Norgaard in 1900.

# CERTIFICATE OF LOCATION OF GOVERNMENT CORNER

NORTH QUARTER Corner of Section 32, Township 116 N, Range 39 W, 5th P.M.

STATE OF MINNESOTA, County of YELLOW MEDICINE

At the corner location shown on the sketch:

On 10/28/93 found a 1/2" I.D. IRON PIPE (DOWN 0.4') WITH A STEEL FENCE POST 0.1' NORTH  
DATE

left monument as found,  lowered monument,  removed monument (explain)

On \_\_\_\_\_ Placed a \_\_\_\_\_  
DATE

## SKETCH OF REFERENCE TIES



NOTE:  
MONUMENT IS:  
IN A CATTLE LANE,  
1.0' EAST OF A N-S FENCE  
IN LINE WITH A FENCE EAST.

DNR NAIL & DISC  
NORTH SIDE  
POWER POLE  
(UP 1.0')  
WEST  
119.82'

CHISELED "X"  
TOP CENTER  
6'x 5'x 2' GRANITE BOULDER  
N 30° W  
82.90'

DNR NAIL & DISC  
EAST SIDE  
RAILROAD TIE FENCE POST  
(UP 2.0')  
N 2° W  
19.58'

CATTLE LANE

MINNESOTA  
STATE PLANE  
COORDINATES  
SOUTH ZONE  
1927 DATUM  
X=1591391.50  
Y=667095.39

NOT TO SCALE  
BEARINGS OBSERVED WITH A COMPASS

Statement of evidence relative to this corner location is on back of page.

DATE 01/04/93  
FILE COW00624

I hereby certify that this document and the data contained herein was prepared by me or under my direct supervision.

Bruce W. Sheppard 1/10/94  
SIGNATURE DATE

Registration No. 17003

Land Surveyor,  Professional Engineer  
 County Surveyor,  County Engineer

OFFICE OF THE COUNTY RECORDER  
County of Yellow Medicine

I hereby certify that this document was filed in the Co. recorders office at 8:25 A.M. on the 25 day of July A.D., 1994

County Recorder Norman J. Godek  
By \_\_\_\_\_, Deputy

DOCUMENT NO. 207220



The DNR Bureau of Engineering contacted the following for survey information:

Minnesota Secretary of State's Office  
Yellow Medicine County Recorder's Office  
Yellow Medicine County Highway Engineer's Office  
Montevideo City Engineer's Office  
K.B. MacKichan and Associates, Inc. of Redwood Falls  
Bonnema Surveys of Willmar  
West Central Land Services, Inc. of Willmar

- 1865 U.S General Land Office notes obtained from the Secretary of State's Office show corner marked a wood post in a mound with pits as per instructions.
- 1891 June, L.R. Moyer's Field Book 7, page 32, obtained from the Montevideo City Engineer's Office shows corner but does not indicate what was found or set. The corner is shown:  
2656.5 feet from the northeast corner of Section 32  
1328.25 feet from the north sixteenth corner of the northeast quarter of Section 32
- 1892 June, page 62 of a Surveyor's Record Book obtained from the County Recorder's Office contains a survey, surveyor not indicated. Survey shows corner but does not indicate what was found or set. The corner is shown:  
40.20 chains(2653.20') from the northeast corner of Section 32  
20.10 chains(1326.60') from the north sixteenth corner of the northeast quarter of Section 32
- 1893 June, L.R. Moyer's Field Book 7, page 118, obtained from the Montevideo City Engineer's Office shows a post pit and mound at corner but does not indicate if found or set. The corner is shown:  
40.26 chains(2657.16') from the northeast corner of Section 32  
20.13 chains(1328.58') from the north sixteenth corner of the northeast quarter of Section 32
- 1900 Surveyor's Record Book B contains John Norgaard's, County Surveyor, remonumentation notes for section corners in Yellow Medicine County. Page 53 states that the north quarter corner of Section 32 was used to reestablish the northeast corner of Section 31. A description of what was found or set at the quarter corner is not given.
- 1912 November, page 277 of a Surveyor's Record Book obtained from the County Recorder's Office contains a survey, by John Norgaard, County Surveyor. Norgaard states that he found a stake and stone at corner which he set several years.

**North Quarter Corner of Section 32, Township 116 North, Range 39 West, Page 2 of 2**

**1915** Page 352 of a Surveyor's Record Book obtained from the County Recorder's Office contains a survey, by John Norgaard, County Surveyor. Survey states that a stone in a government mound was found at corner. The corner is shown:  
2642 feet from the center of Section 29

**No** A Certificate of Survey for land in Sections 29 and 32 obtained from West Central Land  
**Date** Services, Inc. shows that an iron monument was found at corner. The corner is shown:  
2653.20 feet from the northeast corner of Section 32  
1326.60 feet from an iron monument found at the north sixteenth corner of the northeast quarter of Section 32  
2646.45 feet from an iron monument found at the center of Section 29  
in line with fences north, south and east

**1993** October, DNR Bureau of Engineering found a 1/2 inch diameter pipe at corner. Searched for but did not find the record stone - area is covered with numerous sized stones. The iron pipe was found to be:  
1 foot east of a north-south fence  
in line with a fence east  
1326.39 feet from an iron pipe found at the north sixteenth corner of the northeast quarter of Section 32

Analysis of the above information led the DNR Bureau of Engineering to conclude that the found iron pipe marks the location of the corner.

# CERTIFICATE OF LOCATION OF GOVERNMENT CORNER

NORTHEAST Corner of Section 32, Township 116 N, Range 39 W, 5th P.M.

STATE OF MINNESOTA, County of YELLOW MEDICINE

At the corner location shown on the sketch:

- On \_\_\_\_\_ found a \_\_\_\_\_  
DATE
- left monument as found,       lowered monument,       removed monument (explain)
- On 10\28\93 Placed a \_\_\_\_\_  
DATE

## SKETCH OF REFERENCE TIES



COMPUTED CORNER POSITION  
IS IN AN ACTIVE QUARRY.  
NOTHING SET.

MINNESOTA  
STATE PLANE  
COORDINATES  
SOUTH ZONE  
1927 DATUM  
X=1594043.98  
Y=667102.68

Statement of evidence relative to this corner location is on back of page.

DATE 01/04/93  
FILE COW00624

I hereby certify that this document and the data contained herein was prepared by me or under my direct supervision.

Bruce W. Sheppard      1/10/94  
SIGNATURE      DATE

Registration No. 17003

- Land Surveyor,       Professional Engineer
- County Surveyor,       County Engineer

OFFICE OF THE COUNTY RECORDER  
County of Yellow Medicine

I hereby certify that this document was filed in the Co. recorders office at 8:20 A.M. on the 25 day of July A.D., 1994

County Recorder Normand Godeau  
By \_\_\_\_\_, Deputy

DOCUMENT NO. 207219

Northeast Corner of Section 32, Township 116 North, Range 39 West, Page 1 of 4

The DNR Bureau of Engineering contacted the following for survey information:

Minnesota Secretary of State's Office  
Yellow Medicine County Recorder's Office  
Yellow Medicine County Highway Engineer's Office  
Montevideo City Engineer's Office  
K.B. MacKichan and Associates, Inc. of Redwood Falls  
Bonnema Surveys of Willmar  
West Central Land Services, Inc. of Willmar

- 1865 U.S General Land Office notes obtained from the Secretary of State's Office show corner marked a wood post in a mound with pits as per instructions.
- 1891 June, L.R. Moyer's Field Book 7, page 32, obtained from the Montevideo City Engineer's Office shows an old post at corner but does not indicate if found or set. The corner is shown:  
2425.5 feet from Meander Corner Number 5, which is on the east line of Section 29  
1320 feet from a 12" by 10" by 8" stone at the east sixteenth corner of the southeast quarter of Section 29  
2656.5 feet from the north quarter corner of Section 32  
1328.25 feet from the north sixteenth corner of the northeast quarter of Section 32
- 1892 June, page 62 of a Surveyor's Record Book obtained from the County Recorder's Office contains a survey, surveyor not indicated. Survey shows corner but does not indicate what was found or set. The corner is shown:  
40.20 chains(2653.20') from the north quarter corner of Section 32  
20.10 chains(1326.60') from the north sixteenth corner of the northeast quarter of Section 32  
40.10 chains(2646.60') from the east quarter corner of Section 32
- 1892 June, L.R. Moyer's Field Book 7, page 24, obtained from the Montevideo City Engineer's Office shows an old post, stones and four pits at corner but does not indicate if found or set. The corner is shown:  
2610 feet from the north quarter corner of Section 33  
1313 feet from an old mound and stones that are on the north line of Section 33  
2425.5 feet from Meander Corner Number 5, which is on the east line of Section 29  
1320 feet from a post that is on the east line of Section 29
- 1893 June, L.R. Moyer's Field Book 7, page 118, obtained from the Montevideo City Engineer's Office shows corner but does not indicate what was found or set. The corner is shown:  
40.26 chains(2657.16') from the north quarter corner of Section 32  
20.13 chains(1328.58') from the north sixteenth corner of the northeast quarter of Section 32

Northeast Corner of Section 32, Township 116 North, Range 39 West, Page 2 of 4

- 1896 January, page 63 of a Surveyor's Record Book obtained from the County Recorder's Office contains a survey, by Jonah Peterman, County Surveyor. Survey shows a pile of stone with a stake at corner but does not indicate if found or set. The corner is shown:  
40.54 chains(2675.64') from the north quarter corner of Section 33  
20.27 chains(1337.82') from the north sixteenth corner of the northwest quarter of Section 33  
40.00 chains(2640.00') from the east quarter corner of Section 32
- 1898 AUDITOR'S SUBDIVISION NO. 1 as surveyed by John Norgaard, County Surveyor, obtained from the County Recorder's Office shows corner but does not indicate what was found or set. The corner is shown:  
2427.5 feet from Meander Corner Number 5, which is on the east line of Section 29  
2640 feet from the north quarter corner of Section 33  
1320 feet from the north sixteenth corner of the northwest quarter of Section 33  
3240 feet from the southeast corner of Lot B which is on the north line of Section 33
- 1900 Surveyor's Record Book B contains John Norgaard's, County Surveyor, remonumentation notes for section corners in Yellow Medicine County. A note on page 53 states the following about corner:  
found stone and stake in mound all four pits plain, set top of monument level with ground  
Norgaard set 6" by 6" by 24" long cut stones for monuments.
- 1911 December, page 257 of a Surveyor's Record Book obtained from the County Recorder's Office contains a survey, by John Norgaard, County Surveyor. Survey states that only an iron bolt was found at corner but as the ground was frozen the stone monument may still be in place. The corner is shown:  
2640 feet from the north quarter corner of Section 33  
1320 feet from the north sixteenth corner of the northwest quarter of Section 33  
3240 feet from an iron bolt on the north line of Section 33
- 1912 December, page 281 of a Surveyor's Record Book obtained from the County Recorder's Office contains a survey, by John Norgaard, County Surveyor. Survey shows corner but does not indicate what was found or set.
- 1913 June, page 294 of a Surveyor's Record Book obtained from the County Recorder's Office contains a survey, by John Norgaard, County Surveyor. Survey shows corner but does not indicate what was found or set. The corner is shown:  
2070 feet south of a point which is on the center line of a road and on the east line of Section 29  
1552 feet west of a point which is on the center line of a road and on the north line of Section 33

Northeast Corner of Section 32, Township 116 North, Range 39 West, Page 3 of 4

- 1914 March, page 319 of a Surveyor's Record Book obtained from the County Recorder's Office contains a survey, by John Norgaard, County Surveyor. Survey states that a stone was found at corner. The corner is shown:  
20.00 chains(1320.00') from a stone at the north sixteenth corner of the northwest quarter of Section 33
- 1915 Page 351 of a Surveyor's Record Book obtained from the County Recorder's Office contains a survey, by John Norgaard, County Surveyor. Survey states that an iron rod and jasper monument were found at corner. The corner is shown:  
1320.00 feet from the north sixteenth corner of the northwest quarter of Section 33
- No Date A Certificate of Survey for land in Sections 29 and 32 obtained from West Central Land Services, Inc. shows that an iron monument was found at corner. The corner is shown:  
2653.20 feet from the north quarter corner of Section 32  
1326.60 feet from an iron monument found at the north sixteenth corner of the northeast quarter of Section 32  
2606.92 feet from the east quarter corner of Section 32  
505.17 feet from an iron monument found on the east line of Section 29  
2075.53 feet from a plastic capped iron pipe set on the east line of Section 29
- 1993 October, DNR Bureau of Engineering visited the area of the corner and found its location to be in an active quarry and therefore all evidence of monuments no longer exist.

Also, visited the area of the east sixteenth corner of the southeast quarter of Section 29 and found numerous boulders that have been placed by quarry operations, therefore did NOT search for record stone.

Located the north quarter corner of Section 32 and a found iron pipe at the north sixteenth corner of the northeast quarter of Section 32. The iron pipe was found to be:  
1326.39 feet from the north quarter corner of Section 32

Computed a position for the northeast corner of Section 32 as follows:

- A) on the easterly extension of a line from the north quarter corner of Section 32 thru the found iron pipe at the north sixteenth corner of the northeast quarter of Section 32
- B) 1326.39 feet from the found iron pipe at the north sixteenth corner of the northeast quarter of Section 32

The computed position for the northeast corner of Section 32 was found to be:

- 2075.83 feet southerly of an iron pipe found on the center line of a road
- 3244.14 feet westerly of a bolt found next to a corner fence post with fences north and west
- 1320.43 feet westerly of a corner fence post with fences east and northwest - searched area for record stone but did NOT find it

**Northeast Corner of Section 32, Township 116 North, Range 39 West, Page 4 of 4**

**Analysis of the above information led the DNR Bureau of Engineering to conclude that the computed position using the north quarter corner of Section 32 and a found iron pipe at the north sixteenth corner of the northeast quarter of Section 32 marks the location of the corner. Did not set a monument at the computed position for corner because its location is in an active quarry.**

# CERTIFICATE OF LOCATION OF GOVERNMENT CORNER

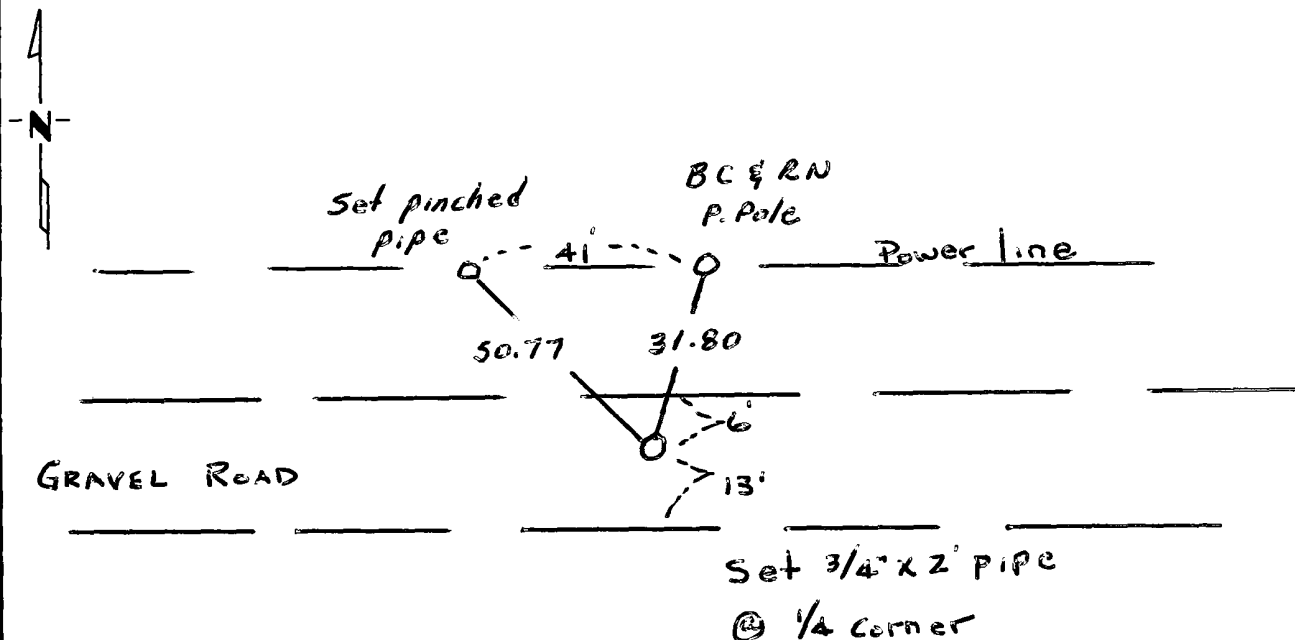
W 1/4 Corner of Section 32, Township 116, Range 39, S P.M.

STATE OF MINNESOTA, County of Yellow Medicine

At the corner location shown on the sketch:

- On 7/22/81 found a \_\_\_\_\_  
DATE
- left monument as found,  lowered monument,  removed monument (explain)
- On 7/22/81 placed a 3/4" x 2' PIPE  
DATE

### SKETCH OF REFERENCE TIES



Statement of evidence relative to this corner location is on back of page.

I hereby certify that this document and the data contained herein was prepared by me or under my direct supervision.

Dale Bohley Oct 26 1983  
SIGNATURE DATE

Registration No. 12002

- Land Surveyor,  Professional Engineer
- County Surveyor,  County Engineer

OFFICE OF THE COUNTY RECORDER  
 County of Yellow Medicine

I hereby certify that this document was filed in the Co. Recorder office at 9:10 A.M. on the 27 day of October A.D., 1983

County Recorder Norman J. Opdahl

By Kay Nordahl Deputy

DOCUMENT NO. 182915

RECORDED  
GRANTED  
INDEXED



Statement of Evidence:

In 1892 the w<sup>1</sup>/<sub>4</sub> cor was on split dist. From NW to SW cor's of Sec 32

In 1918 Survey E<sup>1</sup>/<sub>4</sub> cor Sec 31-116-39 was located in Rd due S. of Big tree (Tree now gone)

In 1912 the w<sup>1</sup>/<sub>4</sub> cor Sec 32 was indicated at split dist from NW to SW cors of Sec 32

In 1983 nothing was found @ w<sup>1</sup>/<sub>4</sub> cor. I established the corner at equal dist N-S. from a C.I.M. @ SW cor Sec to the computed dist @ NW cor Sec (NW cor Sec 32 was pulled by farmer 50± yrs ago.) dist ~~to~~ w<sup>1</sup>/<sub>4</sub> to ctr Sec Record 1912 is within 1' of record. dist from w<sup>1</sup>/<sub>4</sub> to west approx ctr established in 1918 (2640') is within 1' to a fence line north. The E-W Road @ w<sup>1</sup>/<sub>4</sub> cor has reportedly been reworked since 1918

The w<sup>1</sup>/<sub>4</sub> cor is also on a straight line N-S.

# CERTIFICATE OF LOCATION OF GOVERNMENT CORNER

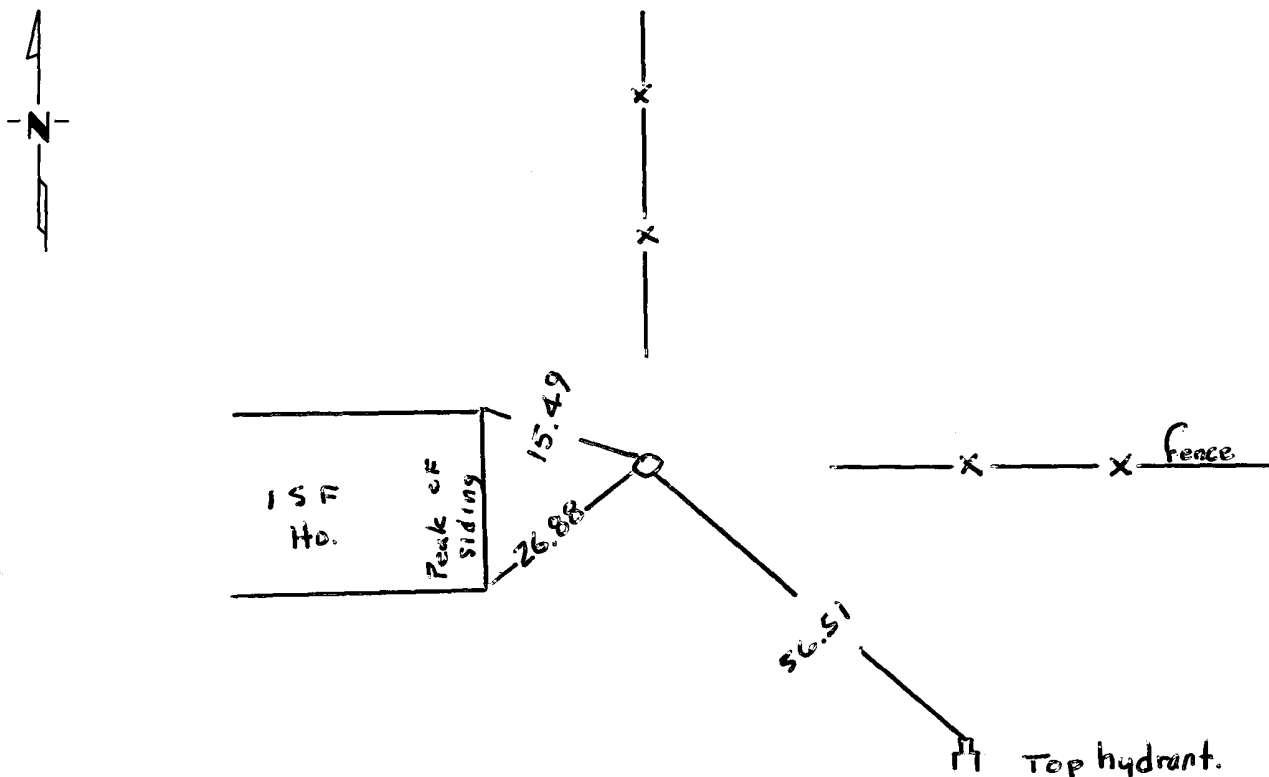
E 1/4 Corner of Section 32, Township 116, Range 39, 5 P.M.

STATE OF MINNESOTA, County of Yellow Medicine

At the corner location shown on the sketch:

- On 9/12/79 found a \_\_\_\_\_  
DATE
- left monument as found,  lowered monument,  removed monument (explain)
- On 9/12/79 placed a 1" PIPE  
DATE

### SKETCH OF REFERENCE TIES



Statement of evidence relative to this corner location is on back of page.

I hereby certify that this document and the data contained herein was prepared by me or under my direct supervision.

Dale Bohley Oct 26 1983  
SIGNATURE DATE

Registration No. 12002

- Land Surveyor,  Professional Engineer
- County Surveyor,  County Engineer

OFFICE OF THE COUNTY RECORDER  
County of Yellow Medicine

I hereby certify that this document was filed in the Co. Recorder office at 9:05 A.M. on the 27 day of October, A.D., 1983

County Recorder Norman J. Opdahl

By Kay Nordahl, Deputy

DOCUMENT NO. 182914

RECORDED  
GRANTOR  
GRANTEE  
INDEXED

Statement of Evidence:

1983 1 set in as indicated on Buhl-Eckert plat  
as platted by A.E. Nelson R.L.S. in 1970

The dist to the S.E. cor Sec 32 is about 2' from MNDOT  
computed distance. T.H. 212