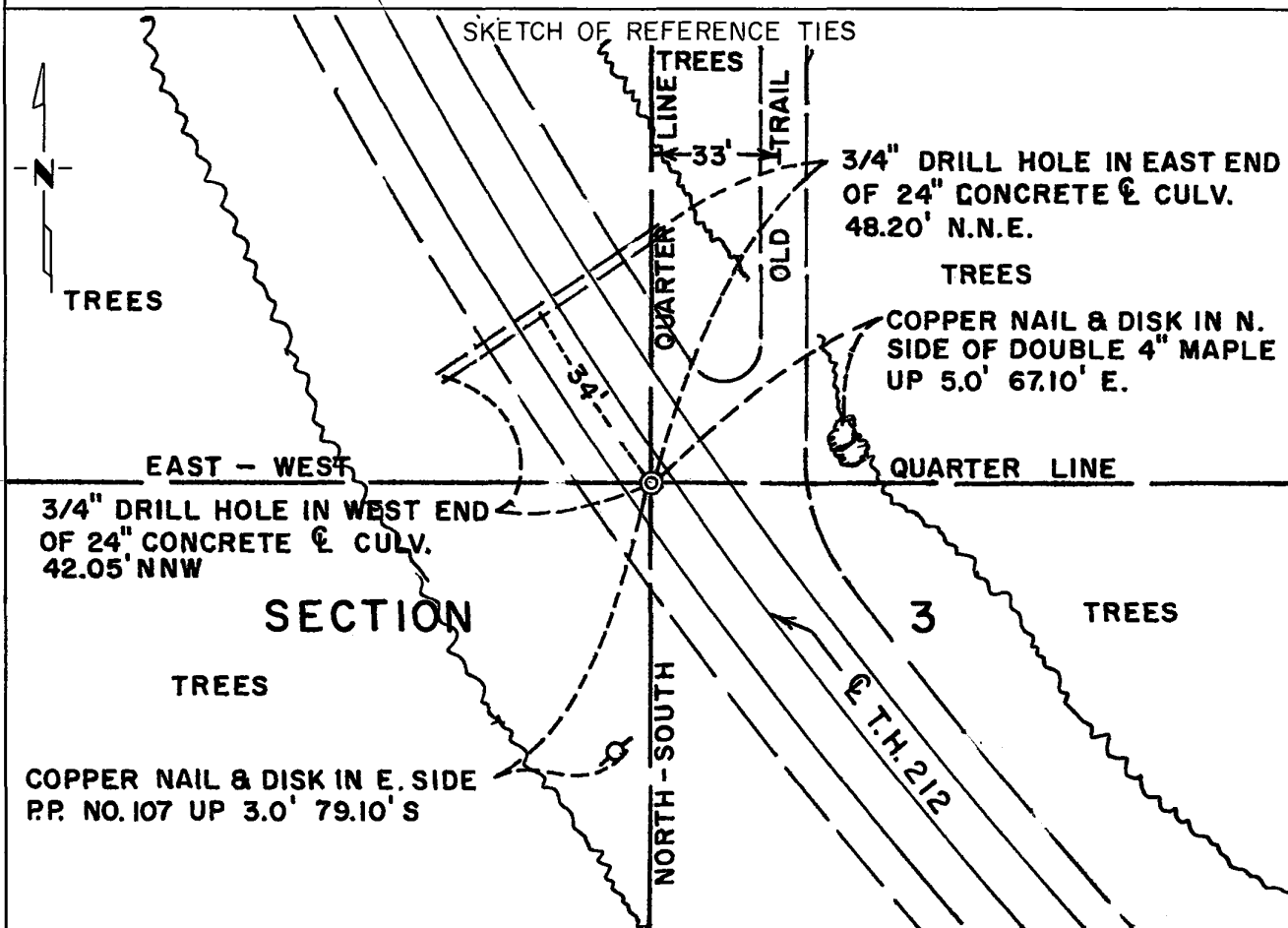


# CERTIFICATE OF LOCATION OF GOVERNMENT CORNER

Center Quarter \_\_\_\_\_ Corner of Section 3, Township 116N, Range 40W, 5th P.M.  
 STATE OF MINNESOTA, County of Yellow Medicine

At the corner location shown on the sketch:

- On \_\_\_\_\_ found a \_\_\_\_\_  
DATE
- left monument as found,  lowered monument,  removed monument (explain)
- On June 17, 1980 placed a brass disc marked center Sec. 3 on 3/4"x24" iron pin  
DATE  
in concrete pavement 4.4 ft. S.W. of center line T.H. 212.



Statement of evidence relative to this corner location is on back of page.

I hereby certify that this document and the data contained herein was prepared by me or under my direct supervision.

Robert C. Genis 2/12/81  
SIGNATURE DATE

Registration No. 11864

Land Surveyor,  Professional Engineer

County Surveyor,  County Engineer

OFFICE OF THE COUNTY RECORDER  
 County of Yellow Medicine

I hereby certify that this document was filed in the Co. Recorders office at 9:40 A.M. on the 17 day of February A.D., 19 81

County Recorder Norman J. Opdahl

By Kay Nordahl, Deputy

DOCUMENT NO. 177654

**Statement of Evidence:** Center of Section 3-116-40 (Center Quarter Corner)

- 1865 - The original Public Land Survey was done by Charles E. Davis. The center of section was not monumented in the original survey.
- 1872 - Daniels subdivided Government Lot 1 into 9 separate tracts.
- 1874 - see below
- 1980 - D.K. Kohanek, R.L.S. for Mn/DOT set a  $\frac{3}{4}$ "x24" iron pin with brass disc on top marked Center Sec. 3 in the concrete pavement 4.4 feet southwest of the centerline of T.H. 212.

Being that the Minnesota River runs diagonally through Section 3 from near the northwest corner to the southeast corner and the river was meandered, the center of section could not be determined in a normal manner; that is, at the intersection of quarter lines. The southeast corner of the section was not set because it would have been located in the river. The north quarter corner and east quarter corner were set in a survey independent of the survey in which the west quarter corner and south quarter corner were set.

Therefore, the center of section was set by a derivative method. Three or four property owners were interviewed as to where their property lines are and as to the location of the north/south quarter line. It was initially thought that the north/south quarter line ran down the center of an old road which was called the Yellowstone Trail. However, after tracing Daniel's and Moyer's surveys and line fences it was determined that the north/south quarter-line is 33 feet west of the center of the Yellowstone Trail. It was also determined that the center of section is 331 feet south of an east/west fence and 1237 feet south of Mr. Tanhoff's north property line. Moyer's survey showed the center of section to be 330 feet south of the property line along the east/west fence and Daniel's survey shows the north line of the Tanhoff property to be 1238.16 feet north of the center of section. All electronic measured distances checked Moyer's and Daniel's distances within 0.5%.

This is an acceptable location for the center of section because it substantially fits the location that has been used for surveys over the past 109 years.

For further survey information, contact the Mn/DOT Surveys Section at Willmar, Mn.

- 1874 - L. R. Moyer, County Surveyor, determined the location of the center of section by surveying from the west quarter corner and the south quarter corner. He also did survey work in Government Lots 2 and 3.

# CERTIFICATE OF LOCATION OF GOVERNMENT CORNER

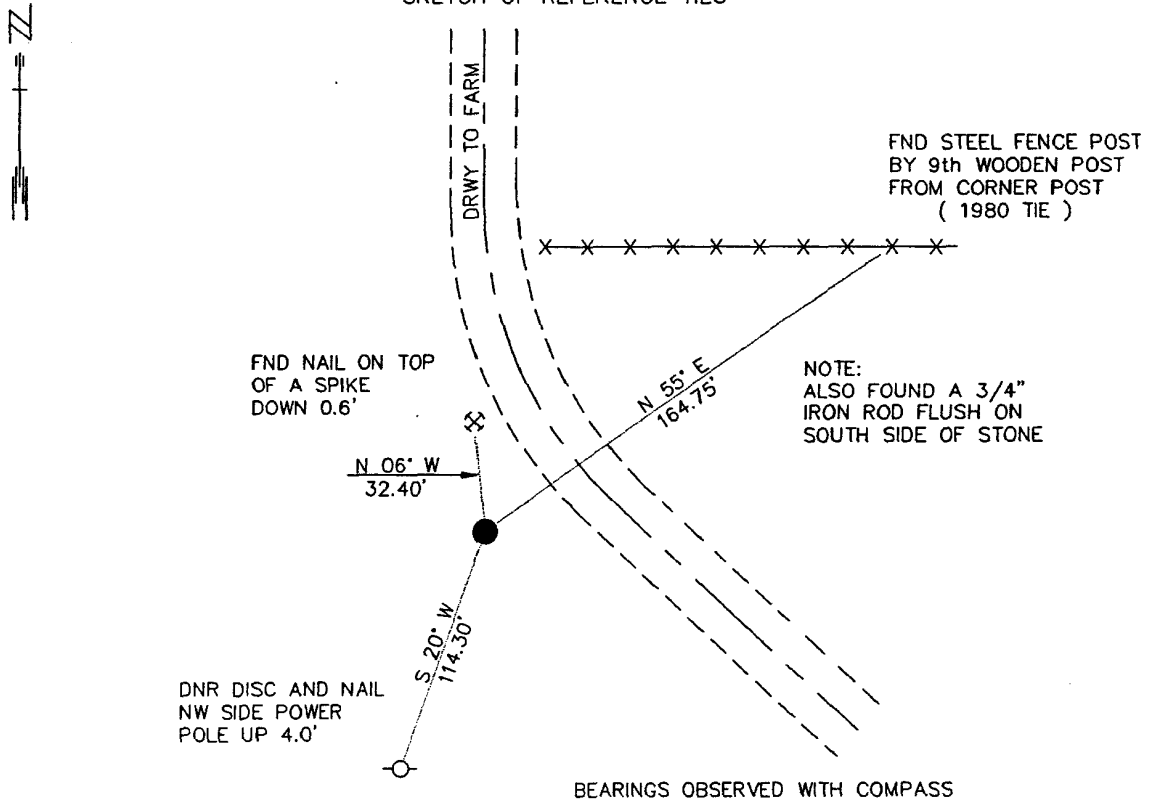
EAST QUARTER Corner of Section 4, Township 116 N., Range 40 W., 5th P.M.

STATE OF MINNESOTA, County of YELLOW MEDICINE

At the corner location shown on the sketch:

- On 7/25/91 found a 6" LONG CAST IRON MONUMENT, FLUSH OVER A  
DATE 6"X 8" FIELD STONE DOWN 6"
- left monument as found,  lowered monument,  removed monument (explain)
- On \_\_\_\_\_ Placed a \_\_\_\_\_  
DATE

SKETCH OF REFERENCE TIES



BEARINGS OBSERVED WITH COMPASS

Statement of evidence relative to this corner location is on back of page. 8/29/91  
COW 00624.01.00.01

I hereby certify that this document and the data contained herein was prepared by me or under my direct supervision.

Bruce W. Sheppard 9-30-91  
SIGNATURE DATE

Registration No. 17003

- Land Surveyor,  Professional Engineer
- County Surveyor,  County Engineer

OFFICE OF THE COUNTY RECORDER

County of Yellow Medicine

I hereby certify that this document was filed in the Co. recorders office at 10:05 A.M. on the 2 day of October A.D., 1991

County Recorder Norman J. Opdahl

By Key Nordahl, Deputy

DOCUMENT NO. 200405

*N/C Send copy to Sheppard*

The DNR Bureau of Engineering contacted the following for survey information:

Minnesota Secretary of State's Office  
Mn/DOT Offices in St. Paul and Willmar  
Yellow Medicine County Offices of the Recorder and Highway Engineer  
Montevideo City Engineer's Office

- 1865 U.S. General Land Office notes obtained from the Secretary of State's Office show corner marked with a wood post in a mound with pits as per instructions.
- 1872 A plat of Government Lot 1 of Section 3 obtained from the County Recorder's Office by G. N. Daniels, Surveyor, states that the quarter post at this corner is:  
40.20 chains (2653.20') from the center of Section 3
- 1874 November, L. R. Moyer's Field Book 3, page 49, obtained from the Montevideo City Engineer's Office shows corner but does not indicate what was found or set. The corner is shown:  
40.22 chains (2654.52') from the center of Section 3  
39.95 chains (2636.70') from the northeast corner of Section 9
- 1894 December, Page 112 of a Surveyor's Record Book obtained from the County Recorder's Office contains a survey by John Norgaard. Survey states that a stake in a mound, which is said to be the old post located by Moyer, was found at corner.
- 1896 October, L. R. Moyer's Field Book 8, page 74, obtained from the Montevideo City Engineer's Office shows a stone and old quarter post at corner but does not indicate if found or set. The corner is shown:  
40.10 chains (2646.60') from the northeast corner of Section 9  
35.98 chains (2374.68') from the northeast corner of Section 4
- No Date Page 11 of a Surveyor's Record Book obtained from the County Recorder's Office contains a survey, surveyor not indicated. Survey shows corner but does not indicate what was found or set. The corner is shown:  
20.30 chains (1339.80') from the center of Section 3
- 1941 A book that contains ties to government corners obtained from the County Highway Engineer's Office shows that a stone was found at the surface at corner. The following ties are shown to corner:  
fourth fence post, south-southeast, 79.9 feet  
eighth fence post, east-southeast, 112.2 feet  
12" Elm, north, 159.7 feet
- 1980 June, A Certificate of Location of Government Corner signed by Robert C. Jones, RLS #11864, obtained from the County Recorder's Office states that an 18" by 20" by 6" field stone was found down 6" at corner. A 3/4" by 24" long iron pin was set on the south side of the stone and a 6" long Mn/DOT cast iron monument was set over the stone. The following ties are shown to corner:  
a) in line with center line of farm driveway north  
b) copper nail and disk in southeast side of third wood post from fence corner, north-northeast, 90.27 feet

- c) front face of steel post painted orange by ninth wood post from fence corner, northeast, 164.72 feet
  - d) copper nail and disk in southeast side of power pole, southwest, 114.40 feet
  - e) southeast side of steel fence post, north-northwest, 117.20 feet
- 1980 A subdivision of Section 3 obtained from the Mn/DOT Office in Willmar shows that an 18" by 20" by 6" stone was found at corner. The corner is shown:
- 2669.81 feet from the center of Section 3
  - 2643.11 feet from the northeast corner of Section 9
  - 2373.81 feet from the northeast corner of Section 4
- 1991 July, DNR Bureau of Engineering found a cast iron monument at corner. Searched for and found one record tie as shown on sketch of reference ties.

Analysis of the above information led the DNR Bureau of Engineering to conclude that the found cast iron monument which was set over a stone marks the original location of the corner as monumented by L. R. Moyer in 1896.

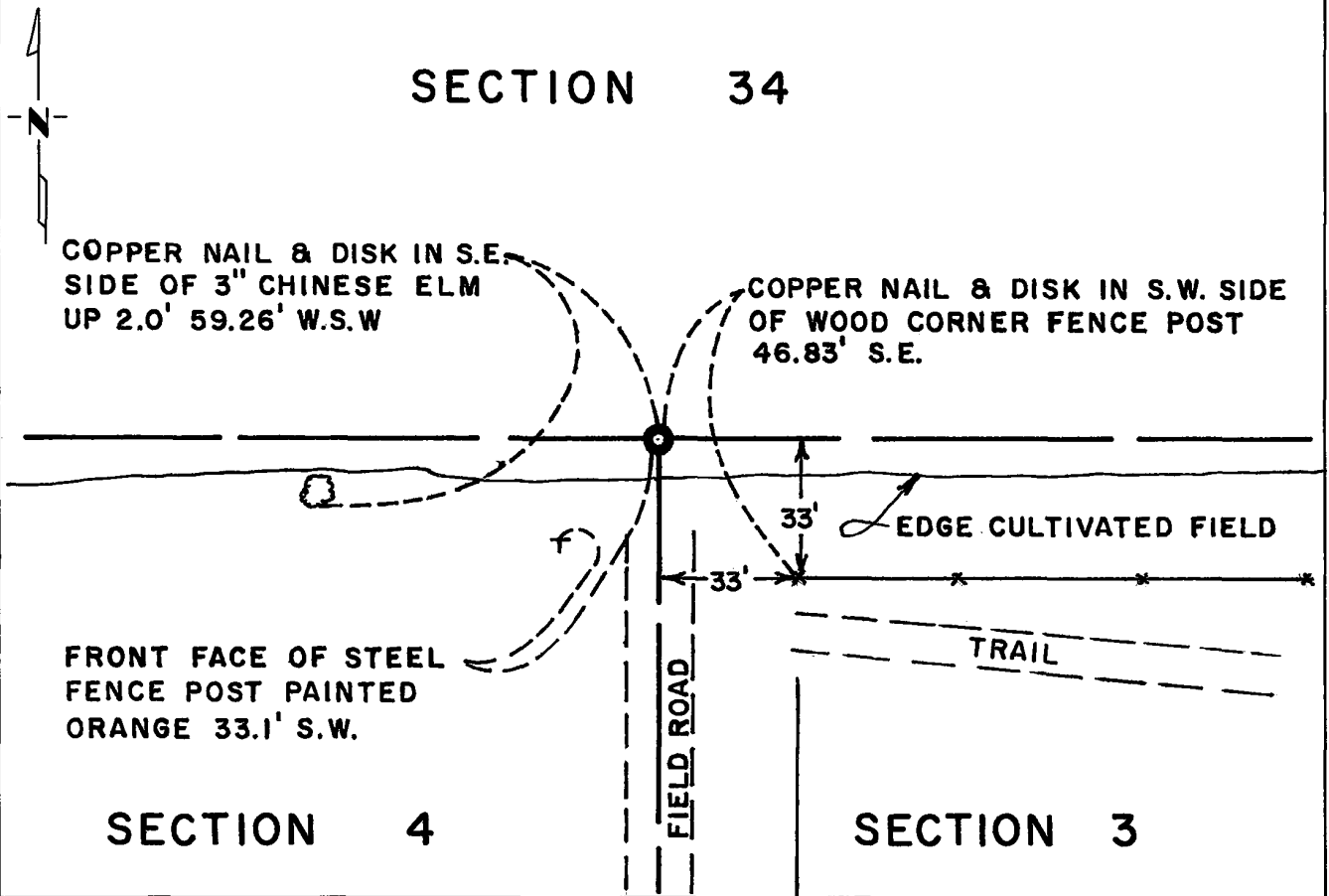
# CERTIFICATE OF LOCATION OF GOVERNMENT CORNER

Northeast Corner of Section 4, Township 116N, Range 40W, 5th P.M.  
STATE OF MINNESOTA, County of Yellow Medicine

At the corner location shown on the sketch:

- On June 17, 1980 found a Hole where a 6"x6"x24" granite monument had been  
DATE  
found in 1963.
  - left monument as found,  lowered monument,  removed monument (explain)
- On June 17, 1980 placed a 3/4"x24" iron pin below a 4" diameter by 20" long cast  
DATE  
iron monument - the top of the cast iron mon. is 14" below ground

SKETCH OF REFERENCE TIES



Statement of evidence relative to this corner location is on back of page.

I hereby certify that this document and the data contained herein was prepared by me or under my direct supervision.

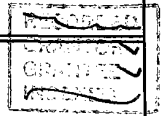
Robert Jones 2/12/81  
SIGNATURE DATE

Registration No. 11864  
 Land Surveyor,  Professional Engineer  
 County Surveyor,  County Engineer

OFFICE OF THE COUNTY RECORDER  
County of Yellow Medicine

I hereby certify that this document was filed in the Co. Recorders office at 9:45 A.M. on the 17 day of February A.D., 19 81

County Recorder Norman J. Opdahl  
By Kay Nordahl, Deputy  
DOCUMENT NO. 177655



Statement of Evidence: Northeast Corner of Section 4, T116N, R40W

- 1858 - The original Public Land Survey for the Fourth Standard Parallel was made by William J. Neely.
- 1865 - The original Public Land Survey to divide T116N, R40W into sections was done by Charles E. Davis. A wood post was set in a dirt mound and pits were dug to mark the corner.
- 1874 - L.R. Moyer found the government corner and used for a survey in Section 3-116-40.
- 1896 - L.R. Moyer found the old government post and set a field stone to mark the corner.
- 1902 - John Norgaard, Yellow Medicine County Surveyor, found a stake and a field stone marking the corner and set a 6"x6"x24" granite monument to mark the corner.
- 1941 - A Yellow Medicine County Highway Department survey crew found the granite monument.
- 1963 - A Yellow Medicine County Highway Department survey crew found the granite monument.
- 1980 - D.K. Kohanek, R.L.S. with Mn/DOT, found that the granite monument had been removed. It was in a pile of rocks somewhere east of the location of the section corner. In talking with Glen Hildahl, an adjacent property owner, and with Ron O'Toole, surveyor with the County Highway Department he determined that the corner should be about 33 feet north and 33 feet west of a ~~field~~ fence corner field road to the south. A careful excavation was made in the plowing and a square hole was found that fit the dimensions of the granite monument exactly. A  $\frac{3}{4}$ "x24" iron pin was placed below a standard Mn/DOT cast iron monument in the found hole. The top of the cast iron monument is 14" below ground.

in line with

The location of the found hole is accepted as the location of the N.E. Cor. of Sec. 4 because record evidence indicates this is the perpetuation of the original P.L.S. corner and it fits the location where Mr. Hildahl and Mr. O'Toole last saw the granite monument in place.

For further survey information, contact the Mn/DOT Surveys Section in Willmar, Mn.

# CERTIFICATE OF LOCATION OF GOVERNMENT CORNER

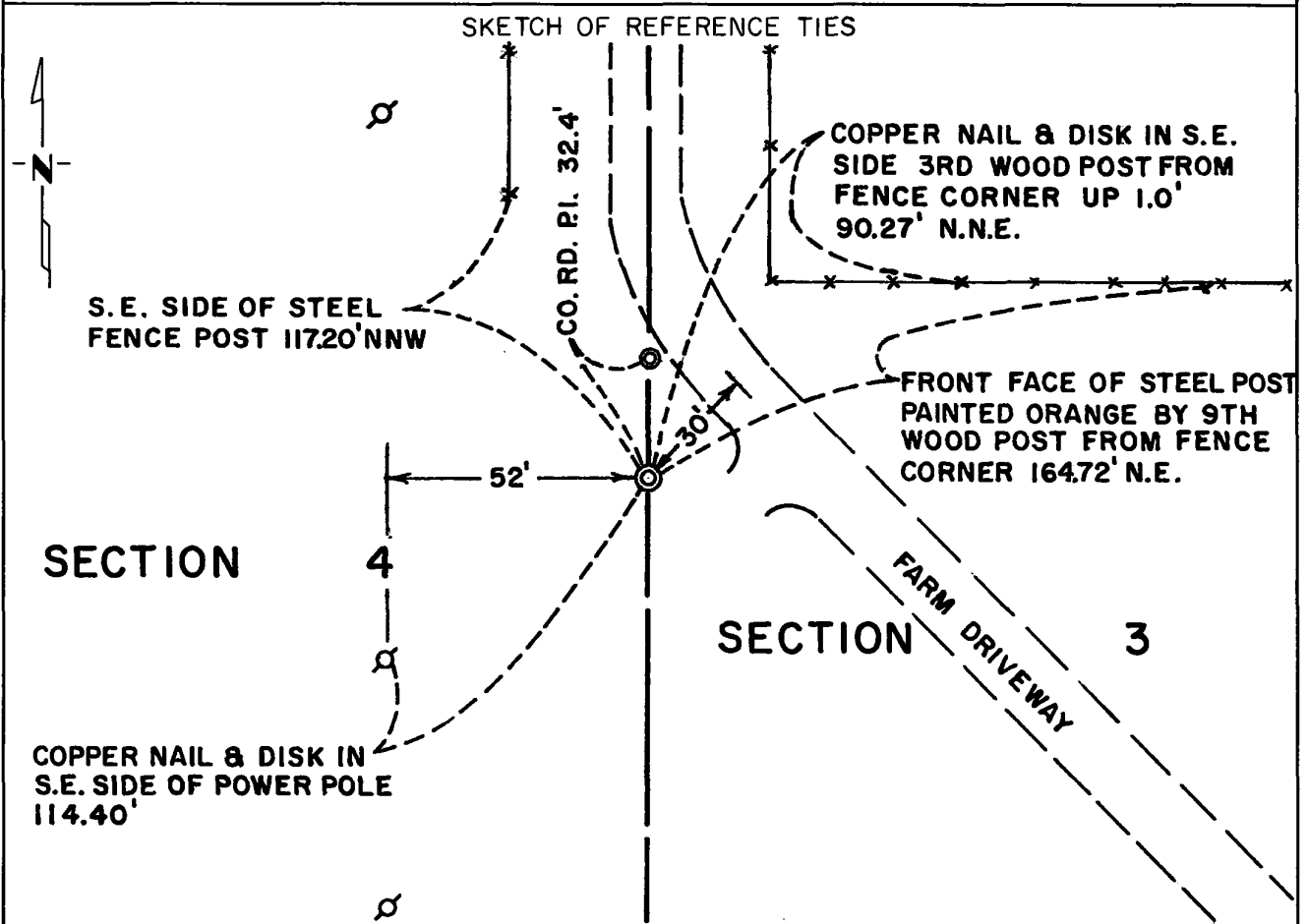
East Quarter \_\_\_\_\_ Corner of Section 4, Township 116N, Range 40W, 5th P.M.  
STATE OF MINNESOTA, County of Yellow Medicine

At the corner location shown on the sketch:

On June 16, 1980 found a field stone measuring 18"x20"x6" about 6" below the ground

left monument as found,  lowered monument,  removed monument (explain)

On June 17, 1980 placed a 3/4"x24" iron pin flush with top of stone, placed Mn/DOT cast iron monument (6" long) over stone - top is flush with ground



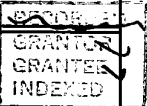
Statement of evidence relative to this corner location is on back of page.

I hereby certify that this document and the data contained herein was prepared by me or under my direct supervision.

Robert Jensen SIGNATURE 2/12/81 DATE

Registration No. 11864  
 Land Surveyor,  Professional Engineer  
 County Surveyor,  County Engineer

OFFICE OF THE COUNTY RECORDER  
County of Yellow Medicine



I hereby certify that this document was filed in the Co. Recorders office at 9:35 A.M. on the 17 day of February A.D., 19 81

County Recorder Norman J. Opdahl  
By Kay Nordahl, Deputy  
DOCUMENT NO. 177653



**Statement of Evidence:** East Quarter Corner of Section 4-116-40

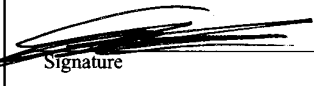
- 1865 - The original Public Land Survey was done by Charles E. Davis. A wood post was set in a dirt mound and pits were dug to mark the corner.
- 1874 - L. R. Moyer found the government corner and used it for a survey in Section 3-116-40.
- 1896 - L. R. Moyer found the government corner and set a field stone to mark the corner.
- 1980 - D. K. Kohanek, R.L.S. with Mn/DOT, found an 18"x20"x6" granite about 6" below ground. Set a  $\frac{3}{4}$ "x24" iron pin on south side of the stone and drove the top of the pin flush with the top of the stone. Set a Mn/DOT cast iron monument over the stone so the top of the monument is flush with the ground. The cast iron monument is 6" long.

Record evidence indicates that the found stone is a perpetuation of the location of the original government corner. This location is 1 foot west and 2 feet north of the lost location.

For further survey information contact the Mn/DOT Surveys Section in Willmar, Mn.

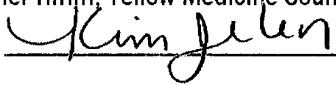
Corners to be Indexed			
Corner	Section	Township	Range
NE	5	116	40

I hereby certify that this survey, plan, or report was prepared by me or under my direct supervision and that I am a duly Licensed Land Surveyor under the laws of the state of Minnesota.


9/28/21  
 Signature Date

Joshua M. Stern - LS 46169

**Doc# 276401 Fee: \$0.00 1 Pages**  
 Property & Public Services  
 Property Records Division  
 Yellow Medicine County, Minnesota  
 I hereby certify that the within instrument was filed on October 1, 2021 at 9:45 AM

Janel Timm, Yellow Medicine County Recorder  
 By  Deputy

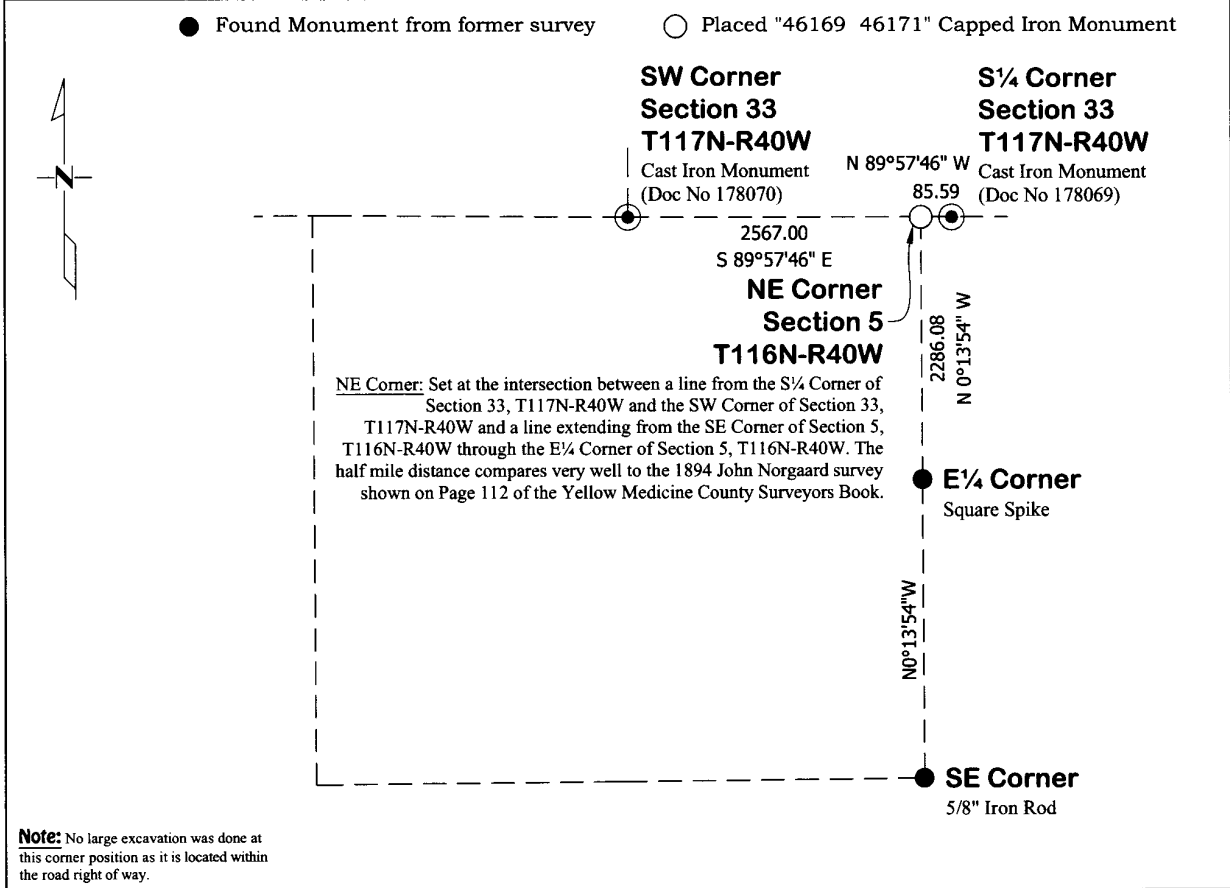
(reserved for recording data)

## CERTIFICATE OF LOCATION OF GOVERNMENT CORNERS

Land Survey Monuments situated in Section 5, Township 116, Range 40 West of the Fifth Principal Meridian, Yellow Medicine County, State of Minnesota.

**Statement of Evidence:**

1858 - Original Government Land Office Survey (Twp. Lines) 1981 - Certificate of Location of Government Corner for the  
 1865 - Original Government Land Office Survey (Subd. Lines) S¼ Corner of Section 33, T117N-R40W  
 1894 - Yellow Medicine County Surveyors Record Book 1981 - Certificate of Location of Government Corner for the  
 for 116N-R40W Stony Run Twp Page 112 SW Corner of Section 33, T117N-R40W  
 Unknown - Yellow Medicine County Surveyors Record Book 1984 - Section Breakdown Sheet of Section 33,  
 for 116N-R40W Stony Run Twp Page 455 T117N-R40W



Doc# 248172 Fee: \$0.00 3 Pages  
Office of County Recorder  
Yellow Medicine County, Minnesota  
I hereby certify that the within instrument  
was filed on May 20, 2009 at 10:40 AM

Kay Zempel, Yellow Medicine County Recorder  
By Heidi J. Bakkelund Deputy

N/C Bruce W. Shepperd, LS  
Minnesota Dept. of Natural Resources  
500 Lafayette Road  
St. Paul, MN 55155-4045

Index No. EF-17

CERTIFICATE OF LOCATION OF GOVERNMENT CORNER	
NUMBER <u>3</u> MEANDER Corner of Section <u>10</u> ,Township <u>116 N</u> ,Range <u>40 W</u>	
<u>5th</u> Principal Meridian, State of Minnesota, County of <u>YELLOW MEDICINE</u>	
At the corner location shown on the sketch:	
<input type="checkbox"/> On _____ found a _____ DATE	
<input type="checkbox"/> left monument as found, <input type="checkbox"/> lowered monument, <input type="checkbox"/> removed monument (explain)	
<input checked="" type="checkbox"/> On <u>10/09/08</u> Placed a <u>3/4" X 24" REBAR WITH PLASTIC CAP STAMPED</u> DATE <u>"MN DNR LS 17003". FLUSH. AS REFERENCE MONUMENT TO MEANDER CORNER.</u>	
<p>BEARINGS OBSERVED WITH COMPASS</p> <p>MC #3</p> <p>NAIL &amp; DNR DISC IN W SIDE OF 16" BASSWOOD CLUMP UP 1.0'</p> <p>N 25° W 8.05'</p> <p>S 35° W 31.93'</p> <p>EAST LINE SECTION 10</p> <p>REF MON TO MC #3 N = 222225.609 E = 566162.462</p> <p>MINNESOTA RIVER</p> <p>REF MONU IS 12' SOUTHWEST OF TOP OF RIVER BANK</p> <p>S 40° E 48.35'</p> <p>NAIL &amp; DNR DISC IN NE SIDE OF 20" OAK, UP 1'</p> <p>NAIL &amp; DNR DISC IN SE SIDE OF 4" ASH UP 1.0'</p> <p>MEANDER CORNER</p> <p>YELLOW MEDICINE COUNTY COORDINATE SYSTEM NAD 1983 1996 ADJ. N = 222359.310 E = 566163.983</p>	
Statement of evidence for this corner location is on back of this page.	
I certify that this document <del>has</del> researched and prepared by me or under my direct supervision.	
SIGNATURE <u>Bruce W. Shepperd</u>	DATE <u>05/18/09</u> License Number <u>17003</u>
Title: <input checked="" type="checkbox"/> Land Surveyor	<input type="checkbox"/> Professional Engineer <input type="checkbox"/> County Surveyor <input type="checkbox"/> County Engineer

The DNR Division of Lands and Minerals contacted the following for survey information:

Minnesota Secretary of State's Office  
Chippewa County Recorder's Office  
Yellow Medicine County Recorder's Office  
Yellow Medicine County Highway Engineer's Office  
Montevideo City Engineer's Office  
MNDOT Offices in St. Paul and Willmar  
Rodeberg and Berryman Consulting Engineers of Montevideo  
Bonnema Surveys Inc. of Willmar  
Bueltel Moseng of Marshall

1865 U.S. General Land Office notes, obtained from the Secretary of State's Office, show the corner marked with a wood post with the following bearing trees:

12" Lynn, North  $87 \frac{1}{2}^{\circ}$  East 43 links (28.38 feet)  
8" Lynn, North  $83 \frac{1}{2}^{\circ}$  West, 24 links (15.84 feet)

The corner is shown:

35.63 chains (2351.58 feet) from the east quarter corner of Section 10

The notes also show that a line north of this meander corner was not measured.

1875 May 10, a plat of Government Lot 1 of Section 2 and Government Lots 3,4,5,6 of Section 11, by L.C. Laired, Surveyor, obtained from the Yellow Medicine County Recorder's Office, states the following:

"I do hereby certify that the above plat is a correct representation of a survey made by L.R. Moyer Oct 24,25 and 26 A.D.1870."

No reference is made to the meander corner but a point is shown as follows:

on the south bank of the Minnesota River and on the west line of Section 11

A distance of 40 chains is shown along the west line of Section 11 north of the west quarter corner of Section 11.

1932 Page 208 of a Surveyor's Record Book, obtained from the Yellow Medicine County Recorder's Office, contains a survey in Section 11 by John Norgaard. Survey states:

"beginning at the Minnesota River thence south on section line 572 ft ..."

572 ft is shown on top of the following which has lines drawn thru it:

"..to fence corner on top of bluff.."

Survey does not give any information about Meander Corner Number 3 or the west quarter corner of Section 11.

2007 November, the DNR Division of Lands and Minerals determined that the GLO distance of 2351.58 feet north of the east quarter corner of Section 10 is currently in the Minnesota River.

When no evidence of the corner is found it's considered lost, and according to the Manual of Instructions for the Survey of the Public Land of the United States, 1973, prepared by the Bureau of Land Management, U.S. Dept. of the Interior, in Chapter 5-45 which states: "Where a line has been terminated with measurement in one direction only, a lost corner will be restored by record bearing and distance, counting from the nearest regular corner, the latter having been duly identified or restored."

A north-south fence line was located 1507 feet and 1942 feet north of the east quarter corner of Section 10. Then a position for the meander corner was computed on the northerly extension of the fence at the GLO distance of 2351.58 feet from the east quarter corner of Section 10.

Analysis of the available information led the DNR Division of Lands and Minerals to conclude that the above computed position for corner marks its location.

A reference monument to the meander corner was set on the east line of Section 10 as shown on the sketch of reference ties.

Doc# 248167 Fee: \$0.00 2 Pages  
Office of County Recorder  
Yellow Medicine County, Minnesota  
I hereby certify that the within instrument  
was filed on May 20, 2009 at 10:15 AM

Kay Zempel, Yellow Medicine County Recorder

By Heidi Bakkelund Deputy

N/C Bruce W. Shepperd, LS  
Minnesota Dept. of Natural Resources  
500 Lafayette Road  
St. Paul, MN 55155-4045

Index No. G-17

# CERTIFICATE OF LOCATION OF GOVERNMENT CORNER

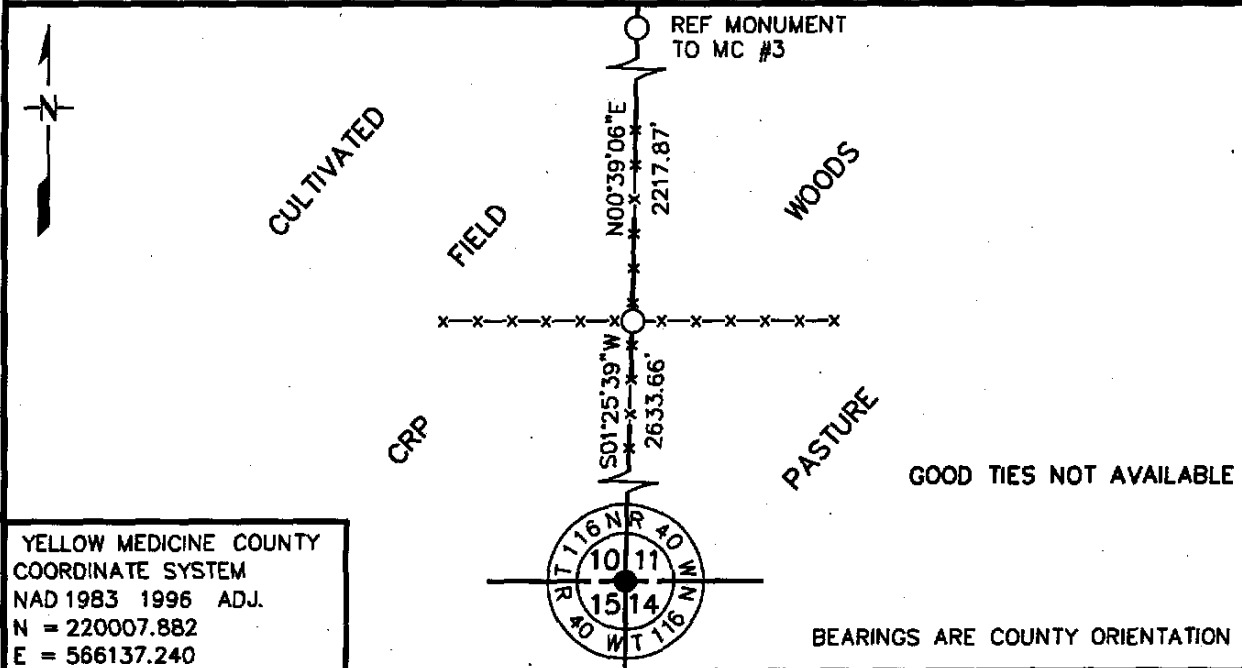
EAST QUARTER Corner of Section 10, Township 116 N, Range 40 W  
5th Principal Meridian, State of Minnesota, County of YELLOW MEDICINE

At the corner location shown on the sketch:

■ On 11/19/07 found a CORNER FENCE POST WITH FENCES N-S-E-W  
DATE

■ left monument as found,     lowered monument,     removed monument (explain)

■ On 11/19/07 Placed a 3/4" X 24" REBAR WITH PLASTIC CAP STAMPED  
DATE "MN DNR LS 17003". FLUSH. NEXT TO THE CORNER FENCE POST



Statement of evidence for this corner location is on back of this page.

5/11/09  
NPB00050.00.00.01

I certify that this document was researched and prepared by me or under my direct supervision.

SIGNATURE Bruce W. Shepperd DATE 05/18/09 License Number 17003

Title:     Land Surveyor     Professional Engineer     County Surveyor     County Engineer

East Quarter Corner of Section 10, Township 116 North, Range 40 West

The DNR Division of Lands and Minerals contacted the following for survey information:

Minnesota Secretary of State's Office  
Chippewa County Recorder's Office  
Yellow Medicine County Recorder's Office  
Yellow Medicine County Highway Engineer's Office  
Montevideo City Engineer's Office  
MNDOT Offices in St. Paul and Willmar  
Rodeberg and Berryman Consulting Engineers of Montevideo  
Bonnema Surveys Inc. of Willmar  
Bueltel Moseng of Marshall

- 1865 U.S. General Land Office notes, obtained from the Secretary of State's Office, show the corner marked with a wood post in a mound with pits as per instructions.
- 1875 May 10, a plat of Government Lot 1 of Section 2 and Government Lots 3,4,5,6 of Section 11, by L.C. Laired, Surveyor, obtained from the Yellow Medicine County Recorder's Office, states the following:  
"I do hereby certify that the above plat is a correct representation of a survey made by L.R. Moyer Oct 24,25 and 26 A.D.1870."  
The following is shown by the quarter corner:  
"lost  $\frac{1}{4}$  post"  
A distance of 40 chains is shown north of the  $\frac{1}{4}$  corner and a distance of 65 chains is shown east of the  $\frac{1}{4}$  corner.
- 1910 February 24, page 208 of a Surveyor's Record Book, obtained from the Yellow Medicine County Recorder's Office, contains a survey in Section 11 by John Norgaard. Survey states:  
"beginning at a point 1320 feet east of the center of Section 11 ..."  
Survey does not give any information about the west quarter corner of Section 11.
- 1932 Page 208 of a Surveyor's Record Book, obtained from the Yellow Medicine County Recorder's Office, contains a survey in Section 11 by John Norgaard. Survey states:  
"beginning at the Minnesota River thence south on section line 572 ft ..."  
572 ft is shown on top of the following which has lines drawn thru it:  
"..to fence corner on top of bluff."  
Survey does not give any information about Meander Corner Number 3 or the west quarter corner of Section 11.
- No Date A right-of-way map for U.S. Trunk Highway 212, obtained from the MNDOT Office in St. Paul shows a fence intersection at corner. No distances are shown to the corner.
- 2007 November 19, the DNR Division of Lands and Minerals found a corner fence post with fences north, south, east and west at corner. The area around the corner fence post was scanned with an electronic metal detector but the only metal attraction that was encountered was wire. Also, probed a 5 foot diameter area around the corner fence post in search of a stone monument but did not find one. A  $\frac{3}{4}$  inch by 24 inch rebar with a plastic cap stamped "MN DNR LS 17003" was set next to the corner fence post and was found to be:  
2633.66 feet from the northeast corner of Section 15

Analysis of the above information led the DNR Division of Lands and Minerals to conclude that the  $\frac{3}{4}$  inch diameter by 24 inch long rebar with a plastic cap stamped "MN DNR LS 17003" set next to a corner fence post marks the obliterated location of the corner.

# CERTIFICATE OF LOCATION OF GOVERNMENT CORNER

NORTH QUARTER Corner of Section 10, Township 116 N., Range 40 W., 5 th P.M.

STATE OF MINNESOTA, County of YELLOW MEDICINE

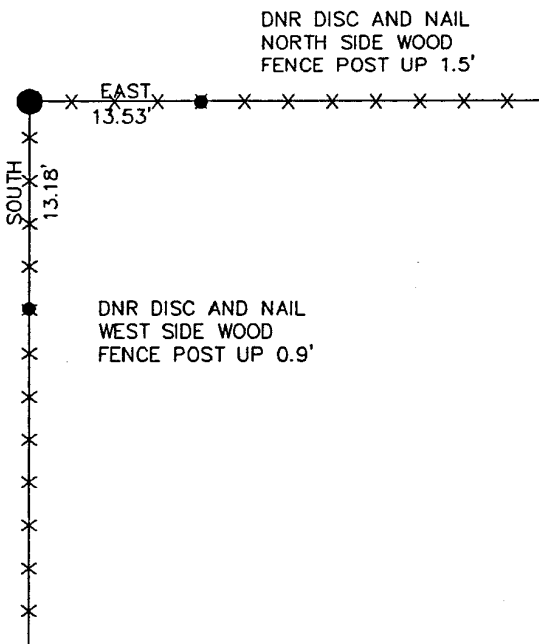
At the corner location shown on the sketch:

On 7/31/91 found a 3/4" IRON ROD UP 0.2'  
DATE

left monument as found,  lowered monument,  removed monument (explain)

On 8/29/91 Placed an ALUMINUM CAP STAMPED "DNR SURVEY MARKER"  
DATE  
ON TOP OF THE FOUND IRON ROD

## SKETCH OF REFERENCE TIES



BEARINGS OBSERVED WITH COMPASS

Statement of evidence relative to this corner location is on back of page. 8/29/91  
COW00624.01.00.01

I hereby certify that this document and the data contained herein was prepared by me or under my direct supervision.

Bruce W. Sheppard 9-30-91  
SIGNATURE DATE

Registration No. 17003

Land Surveyor,  Professional Engineer  
 County Surveyor,  County Engineer

OFFICE OF THE COUNTY RECORDER  
County of Yellow Medicine

I hereby certify that this document was filed in the Co. recorders office at 10:00 A.M. on the 2 day of October A.D., 1991

County Recorder Norman J. Opdahl  
By Key Nordahl, Deputy  
DOCUMENT NO. 200404

*Me Sand copy to Sheppard*



North Quarter Corner of Section 10, Township 116 North, Range 40 West

The DNR Bureau of Engineering contacted the following for survey information:

Minnesota Secretary of State's Office  
Mn/DOT Offices in St. Paul and Willmar  
Yellow Medicine County Offices of the Recorder and Highway Engineer  
Montevideo City Engineer's Office

- 1865 U.S. General Land Office notes obtained from the Secretary of State's Office show corner marked with a wood post in a mound with pits as per instructions.
- 1872 A plat of Government Lot 1 of Section 3 obtained from the County Recorder's Office by G. N. Daniels, Surveyor, shows the center of Section 3 but no reference is given to the south quarter corner of Section 3.
- 1874 November, L. R. Moyer's Field Book 3, page 49, obtained from the Montevideo City Engineer's Office shows corner but does not indicate what was found or set. The corner is shown:  
40.06 chains (2643.96') from the northeast corner of Section 9  
40.09 chains (2645.94') from the center of Section 3
- No Date Page 11 of a Surveyor's Record Book obtained from the County Recorder's Office contains a survey, surveyor not indicated. Survey shows corner but does not indicate what was found or set. The corner is shown:  
20 chains (1320.00') from the center of Section 3
- No Date A right-of-way map for U.S. Trunk Highway 212 obtained from the Mn/DOT Office in St. Paul shows the corner at the intersection of fences. A description of a monument at corner or a distance to it is not given.
- 1980 A subdivision of Section 3 obtained from the Mn/DOT Office in Willmar shows corner but does not indicate what was found or set. The corner is shown:  
2647.78 feet from the northeast corner of Section 9  
2656.20 feet from the center of Section 3
- 1980 Notes about government corners obtained from the Mn/DOT Office in Willmar state that the intersection of fences east and south was used for corner. A monument was not set to mark the location of the corner.
- 1991 July, DNR Bureau of Engineering found a 3/4" diameter iron rod up 0.2 of a foot at corner. The iron rod was found to be:  
0.2 of a foot north of a fence east  
in line with a fence south

Analysis of the above information led the DNR Bureau of Engineering to conclude that the found iron rod at the intersection of fences marks the obliterated location of the corner.

Doc# 248171 Fee: \$0.00 2 Pages  
 Office of County Recorder  
 Yellow Medicine County, Minnesota  
 I hereby certify that the within instrument  
 was filed on May 20, 2009 at 10:35 AM

Kay Zempel, Yellow Medicine County Recorder  
 By Heidi J. Bakken Deputy

N/C Bruce W. Shepperd, LS  
 Minnesota Dept. of Natural Resources  
 500 Lafayette Road  
 St. Paul, MN 55155-4045

Index No. GH-21

**CERTIFICATE OF LOCATION OF GOVERNMENT CORNER**

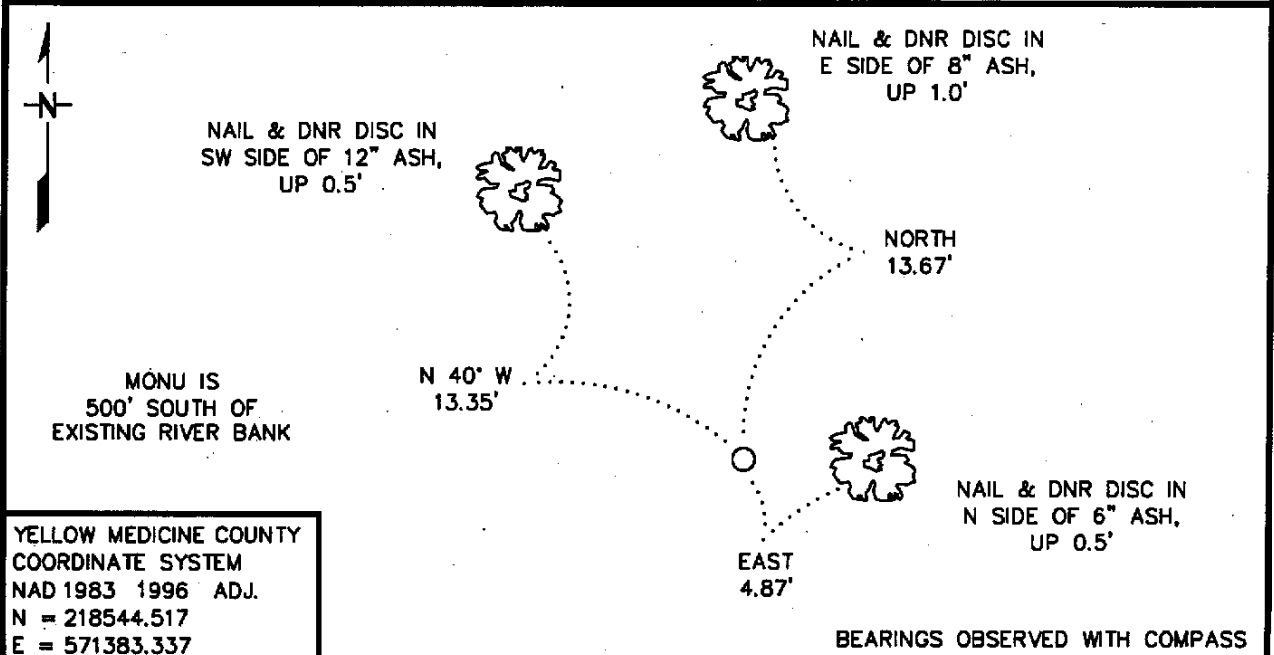
NUMBER 6 MEANDER Corner of Section 11, Township 116 N, Range 40 W  
5th Principal Meridian, State of Minnesota, County of YELLOW MEDICINE

At the corner location shown on the sketch:

On \_\_\_\_\_ found a \_\_\_\_\_  
 DATE

left monument as found,  lowered monument,  removed monument (explain)

On 10/9/08 Placed a 3/4" X 24" REBAR WITH PLASTIC CAP STAMPED  
 DATE  
"MN DNR LS 17003". FLUSH



YELLOW MEDICINE COUNTY  
 COORDINATE SYSTEM  
 NAD 1983 1996 ADJ.  
 N = 218544.517  
 E = 571383.337

Statement of evidence for this corner location is on back of this page. 5/12/09 NPB00050.00.00.01

I certify that this document was researched and prepared by me or under my direct supervision.

SIGNATURE Bruce W. Shepperd DATE 05/10/09 License Number 17003

Title:  Land Surveyor  Professional Engineer  County Surveyor  County Engineer

Meander Corner Number 6 of Section 11, Township 116 North, Range 40 West

The DNR Division of Lands and Minerals contacted the following for survey information:

Minnesota Secretary of State's Office  
Chippewa County Recorder's Office  
Yellow Medicine County Recorder's Office  
Yellow Medicine County Highway Engineer's Office  
Montevideo City Engineer's Office  
MNDOT Offices in St. Paul and Willmar  
Rodeberg and Berryman Consulting Engineers of Montevideo  
Bonnema Surveys Inc. of Willmar  
Bueltel Moseng of Marshall

1865 U.S. General Land Office notes, obtained from the Secretary of State's Office, show the corner marked with a wood post with the following bearing trees:

5" Elm, East 2.37 chains (156.42 feet)

5" Elm, North  $80 \frac{3}{4}^{\circ}$  West, 3.67 chains (242.22 feet)

The corner is shown:

21.20 chains (1399.20 feet) from the southeast corner of Section 11

The notes also show that a line north of this meander corner was not measured.

No resurvey information was obtained for this corner.

2007 November, the DNR Division of Lands and Minerals determined that no occupation lines exist north of the southeast corner of Section 11.

When no evidence of the corner is found it's considered lost, and according to the Manual of Instructions for the Survey of the Public Land of the United States, 1973, prepared by the Bureau of Land Management, U.S. Dept. of the Interior, in Chapter 5-45 which states: "Where a line has been terminated with measurement in one direction only, a lost corner will be restored by record bearing and distance, counting from the nearest regular corner, the latter having been duly identified or restored."

Then the lost position for the meander corner was computed on a solar bearing north of the southeast corner of Section 11 at the GLO distance of 1399.20 feet from the southeast corner of Section 11. A field search was conducted at the computed lost position for evidence of the GLO bearing trees but found no evidence of them.

Analysis of the available information led the DNR Division of Lands and Minerals to conclude that the computed lost position for corner marks its location.

Office of County Recorder  
Yellow Medicine County, Minnesota  
I hereby certify that the within instrument  
was filed on May 20, 2009 at 10:30 AM

Kay Zempel, Yellow Medicine County Recorder

By Heidi J. Bakke Deputy

N/C Bruce W. Shepperd, LS  
Minnesota Dept. of Natural Resources  
500 Lafayette Road  
St. Paul, MN 55155-4045

Index No. J-21

# CERTIFICATE OF LOCATION OF GOVERNMENT CORNER

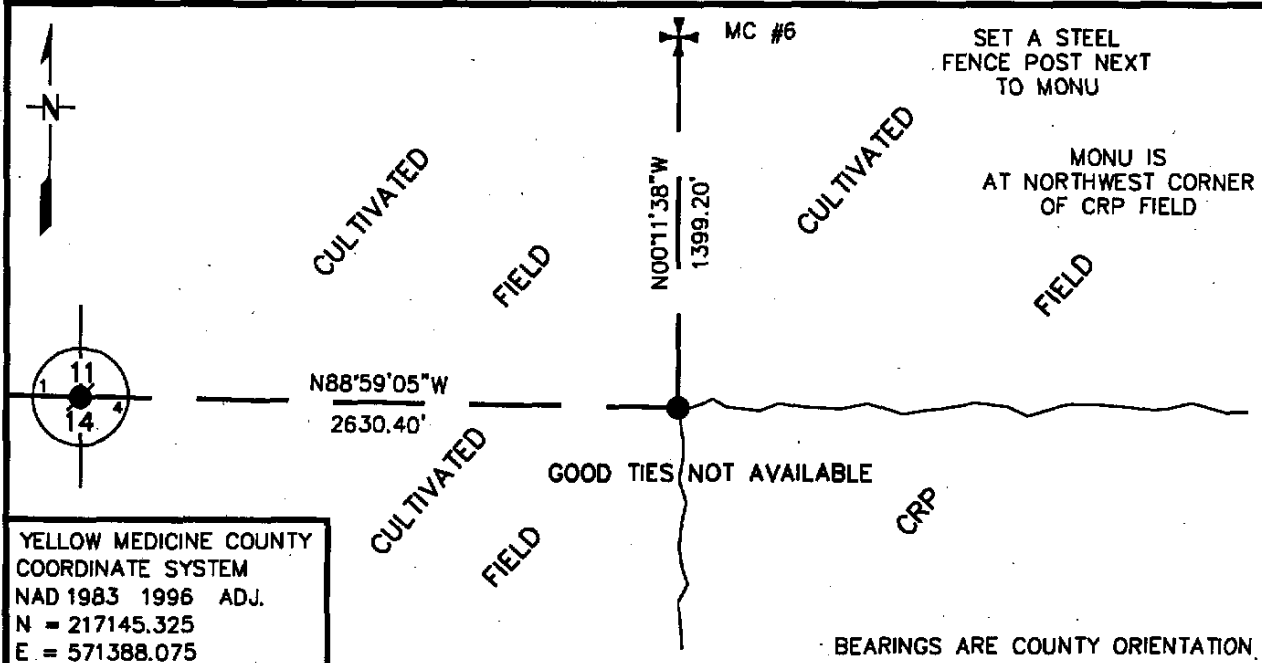
NORTHEAST Corner of Section 14, Township 116 N, Range 40 W  
5th Principal Meridian, State of Minnesota, County of YELLOW MEDICINE

At the corner location shown on the sketch:

On 11/19/07 found a 1-1/4" INSIDE DIAM. BY 42" LONG IRON PIPE, DOWN 0.2'  
DATE

left monument as found,  lowered monument,  removed monument (explain)

On \_\_\_\_\_ Placed a \_\_\_\_\_  
DATE



YELLOW MEDICINE COUNTY  
COORDINATE SYSTEM  
NAD 1983 1996 ADJ.  
N = 217145.325  
E = 571388.075

Statement of evidence for this corner location is on back of this page. 5/12/09  
NPB00050.00.00.01

I certify that this document was researched and prepared by me or under my direct supervision.

SIGNATURE Bruce W. Shepperd DATE 05/10/09 License Number 17003

Title:  Land Surveyor  Professional Engineer  County Surveyor  County Engineer

The DNR Division of Lands and Minerals contacted the following for survey information:

Minnesota Secretary of State's Office  
Chippewa County Recorder's Office  
Yellow Medicine County Recorder's Office  
Yellow Medicine County Highway Engineer's Office  
Montevideo City Engineer's Office  
MNDOT Offices in St. Paul and Willmar  
Rodeberg and Berryman Consulting Engineers of Montevideo  
Bonnema Surveys Inc. of Willmar  
Bueltel Moseng of Marshall

1865 U.S. General Land Office notes, obtained from the Secretary of State's Office, show the corner marked with a wood post in a mound with pits as per instructions.

1901 September 27, Surveyor's Record Book B, obtained from the Yellow Medicine County Recorder's Office, contains John Norgaard's, County Surveyor, remonumentation notes for section corners in Yellow Medicine County. A note on page 58 states the following about the corner:

found fence post set by John Mooney in the government mound, set top of monument  
3" above ground

Norgaard set 6" by 6" by 24" cut jasper granite stones for monuments

1918 July, page 412 of a Surveyor's Record Book, obtained from the Yellow Medicine County Recorder's Office, contains a survey in Section 13 by John Norgaard, County Surveyor. Survey shows corner but does not indicate what kind of monument was found or set. The following is noted:

"I made a subdivision of the section over 20 years ago"

No Page 208 of a Surveyor's Record Book, obtained from the Yellow Medicine County  
Date Recorder's Office, contains a survey in Section 11 by John Norgaard. Survey shows corner but does not indicate what kind of monument was found or set. The corner is shown:

2634.9 feet from the north quarter corner of Section 14

No A right-of-way map for U.S. Trunk Highway 212, obtained from the MNDOT Office in St. Paul  
Date shows a symbol for corner but does not indicate what kind of monument was found or set. The corner is shown:

2121.0 feet from POC Station 393+67.9

2630.5 feet from the north quarter corner of Section 14

2005 July 20, a Certificate of Survey in Sections 13,14, 24 of Township 116 North, Range 40 West, obtained from Roy Marihart, LS 19092, shows a 1 1/2 inch iron pipe in place at corner. The corner is shown:

2630.02 feet from the north quarter corner of Section 14

2652.35 feet from the east quarter corner of Section 14

2007 November 19, the DNR Division of Lands and Minerals found a 1 1/4 inch diameter by 42 inch long iron pipe at corner, 0.2 of a foot below the surface. A backhoe was hired to dig for the record stone and a 10 foot by 10 foot by 4 foot deep hole was dug the center being the found iron pipe. No evidence of the record stone or other monuments was found in the excavation. The iron pipe was reset and was found to be:

2630.40 feet from the north quarter corner of Section 14

Analysis of the above information led the DNR Division of Lands and Minerals to conclude that the found iron pipe marks the location of the corner.

Doc# 248169 Fee: \$0.00 2 Pages

Office of County Recorder  
Yellow Medicine County, Minnesota  
I hereby certify that the within instrument  
was filed on May 20, 2009 at 10:25 AM

Kay Zempel, Yellow Medicine County Recorder

By Heidi J. Backlund Deputy

N/C Bruce W. Shepperd, LS  
Minnesota Dept. of Natural Resources  
500 Lafayette Road  
St. Paul, MN 55155-4045

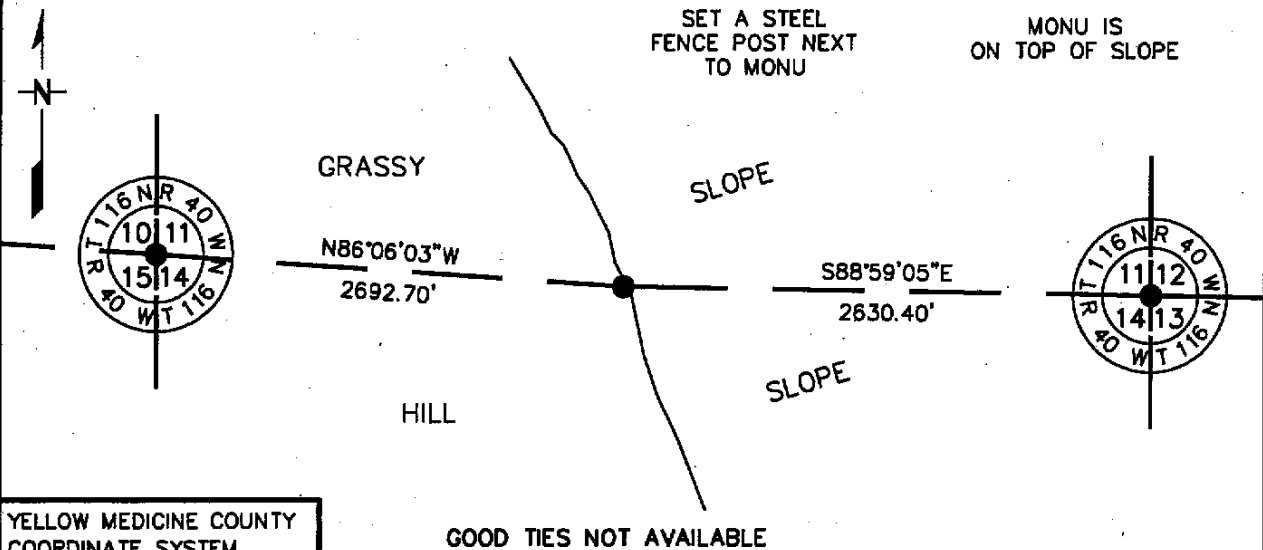
Index No. J-19

# CERTIFICATE OF LOCATION OF GOVERNMENT CORNER

NORTH QUARTER Corner of Section 14, Township 116 N, Range 40 W  
5th Principal Meridian, State of Minnesota, County of YELLOW MEDICINE

At the corner location shown on the sketch:

- On 11/19/07 found a 1-1/4" INSIDE DIAMETER IRON PIPE, UP 0.6'  
DATE
- left monument as found,  lowered monument,  removed monument (explain)
- On \_\_\_\_\_ Placed a \_\_\_\_\_  
DATE



YELLOW MEDICINE COUNTY  
COORDINATE SYSTEM  
NAD 1983 1996 ADJ.  
N = 217191.939  
E = 568758.095

BEARINGS ARE COUNTY ORIENTATION

Statement of evidence for this corner location is on back of this page. 5/12/09  
NP800050.00.00.01

I certify that this document was researched and prepared by me or under my direct supervision.  
SIGNATURE Bruce W. Shepperd DATE 05/18/09 License Number 17003  
Title:  Land Surveyor  Professional Engineer  County Surveyor  County Engineer

North Quarter Corner of Section 14, Township 116 North, Range 40 West

The DNR Division of Lands and Minerals contacted the following for survey information:

Minnesota Secretary of State's Office  
Chippewa County Recorder's Office  
Yellow Medicine County Recorder's Office  
Yellow Medicine County Highway Engineer's Office  
Montevideo City Engineer's Office  
MNDOT Offices in St. Paul and Willmar  
Rodeberg and Berryman Consulting Engineers of Montevideo  
Bonnema Surveys Inc. of Willmar  
Bueltel Moseng of Marshall

1865 U.S. General Land Office notes, obtained from the Secretary of State's Office, show the corner marked with a wood post in a mound with pits as per instructions.

No Page 208 of a Surveyor's Record Book, obtained from the Yellow Medicine County  
Date Recorder's Office, contains a survey in Section 11 by John Norgaard. Survey shows a post at corner but does not indicate if it was found or set. The corner is shown:  
2634.9 feet from the northeast corner of Section 14

No A right-of-way map for U.S. Trunk Highway 212, obtained from the MNDOT Office in St. Paul  
Date shows an iron pin in place at corner. The corner is shown:  
509.5 feet from POC Station 393+67.9  
2630.5 feet from the northeast corner of Section 14

2005 July 20, a Certificate of Survey in Sections 13,14, 24 of Township 116 North, Range 40 West, obtained from Roy Marihart, LS 19092, shows a 1 1/2 inch iron pipe in place at corner. The corner is shown:  
2630.02 feet from the northeast corner of Section 14

2007 November 19, the DNR Division of Lands and Minerals found a 1 1/4 inch inside diameter iron pipe, up 0.6 of a foot, next to a steel fence post at corner. The iron pipe was found to be:  
2630.40 feet from the northeast corner of Section 14  
2692.70 feet from the northwest corner of Section 14  
68.24 feet south and 28.24 feet east of the lost position for corner

Analysis of the above information led the DNR Division of Lands and Minerals to conclude that the found iron pipe marks the location of the corner.



Doc# 248168 Fee: \$0.00 2 Pages

Office of County Recorder  
Yellow Medicine County, Minnesota  
I hereby certify that the within instrument  
was filed on May 20, 2009 at 10:20 AM

Kay Zempel, Yellow Medicine County Recorder

By Heidi Bakke Deputy

N/C Bruce W. Shepperd, LS  
Minnesota Dept. of Natural Resources  
500 Lafayette Road  
St. Paul, MN 55155-4045

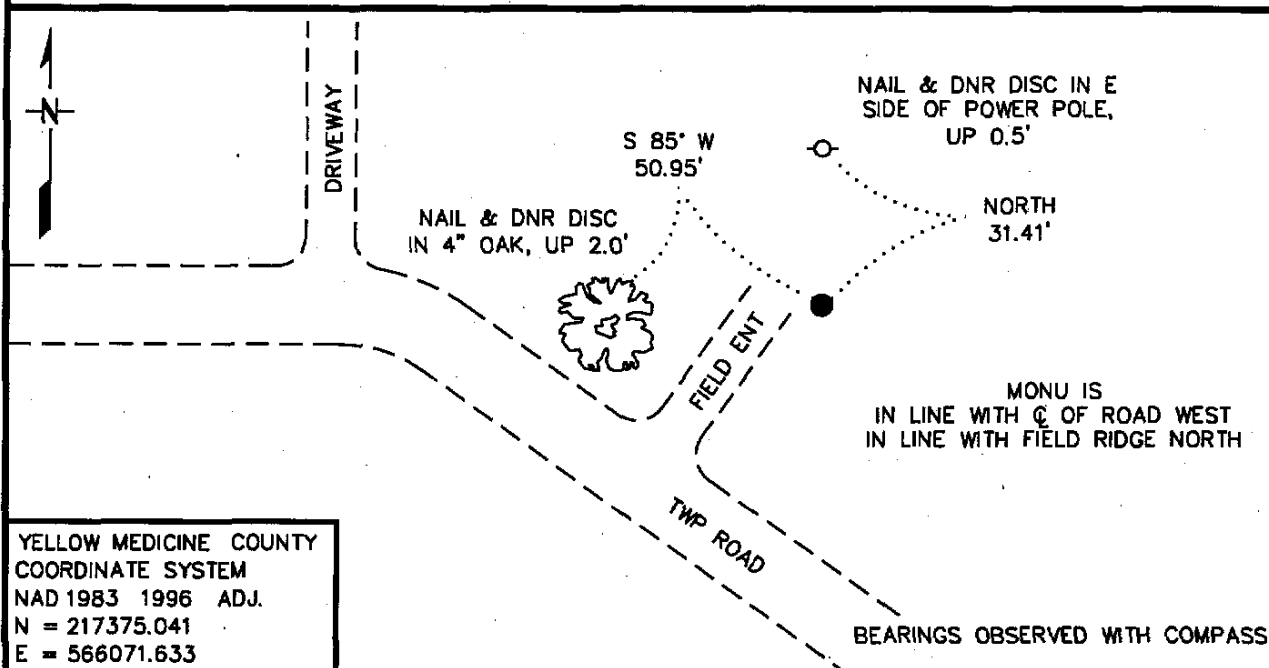
Index No. J-17

# CERTIFICATE OF LOCATION OF GOVERNMENT CORNER

NORTHEAST Corner of Section 15, Township 116 N, Range 40 W  
5th Principal Meridian, State of Minnesota, County of YELLOW MEDICINE

At the corner location shown on the sketch:

- On 11/19/07 found a 1-1/4" INSIDE DIAM. BY 42" LONG IRON PIPE, DOWN 0.5'  
DATE
- left monument as found,  lowered monument,  removed monument (explain)
- On \_\_\_\_\_ Placed a \_\_\_\_\_  
DATE



YELLOW MEDICINE COUNTY  
COORDINATE SYSTEM  
NAD 1983 1996 ADJ.  
N = 217375.041  
E = 566071.633

Statement of evidence for this corner location is on back of this page.

5/11/09  
NP800050.00.00.01

I certify that this document was researched and prepared by me or under my direct supervision.

SIGNATURE Bruce W. Shepperd DATE 05/18/09 License Number 17003

Title:  Land Surveyor  Professional Engineer  County Surveyor  County Engineer

Northeast Corner of Section 15, Township 116 North, Range 40 West

The DNR Division of Lands and Minerals contacted the following for survey information:

Minnesota Secretary of State's Office  
Chippewa County Recorder's Office  
Yellow Medicine County Recorder's Office  
Yellow Medicine County Highway Engineer's Office  
Montevideo City Engineer's Office  
MNDOT Offices in St. Paul and Willmar  
Rodeberg and Berryman Consulting Engineers of Montevideo  
Bonnema Surveys Inc. of Willmar  
Bueltel Moseng of Marshall

1865 U.S. General Land Office notes, obtained from the Secretary of State's Office, show the corner marked with a wood post in a mound with pits as per instructions.

1901 September 27, Surveyor's Record Book B, obtained from the Yellow Medicine County Recorder's Office, contains John Norgaard's, County Surveyor, remonumentation notes for section corners in Yellow Medicine County. A note on page 58 states the following about the corner:

found stone set by John Mooney in the government mound, set top of monument  
2" above ground

Norgaard set 6" by 6" by 24" cut jasper granite stones for monuments

No Page 423 of a Surveyor's Record Book, obtained from the Yellow Medicine County  
Date Recorder's Office, contains a survey in Section 15 by John Norgaard, County Surveyor. Survey shows corner but does not indicate what kind of monument was found or set and no distances are shown to it.

2007 November 19, the DNR Division of Lands and Minerals found a 1 1/4 inch diameter by 42 inch long iron pipe at corner, 0.5 of a foot below the surface. A backhoe was hired to dig for the record stone and a 10 foot by 10 foot by 4 foot deep hole was dug the center being the found iron pipe. No evidence of the record stone or other monuments was found in the excavation. The iron pipe was reset and was found to be:

2692.70 feet from the north quarter corner of Section 14

2633.66 feet from the east quarter corner of Section 10

2657.18 feet from an iron pipe found in the area of the north quarter corner of Section 15 in line with the easterly extension of the center line of a road west

Analysis of the above information led the DNR Division of Lands and Minerals to conclude that the found iron pipe marks the location of the corner.

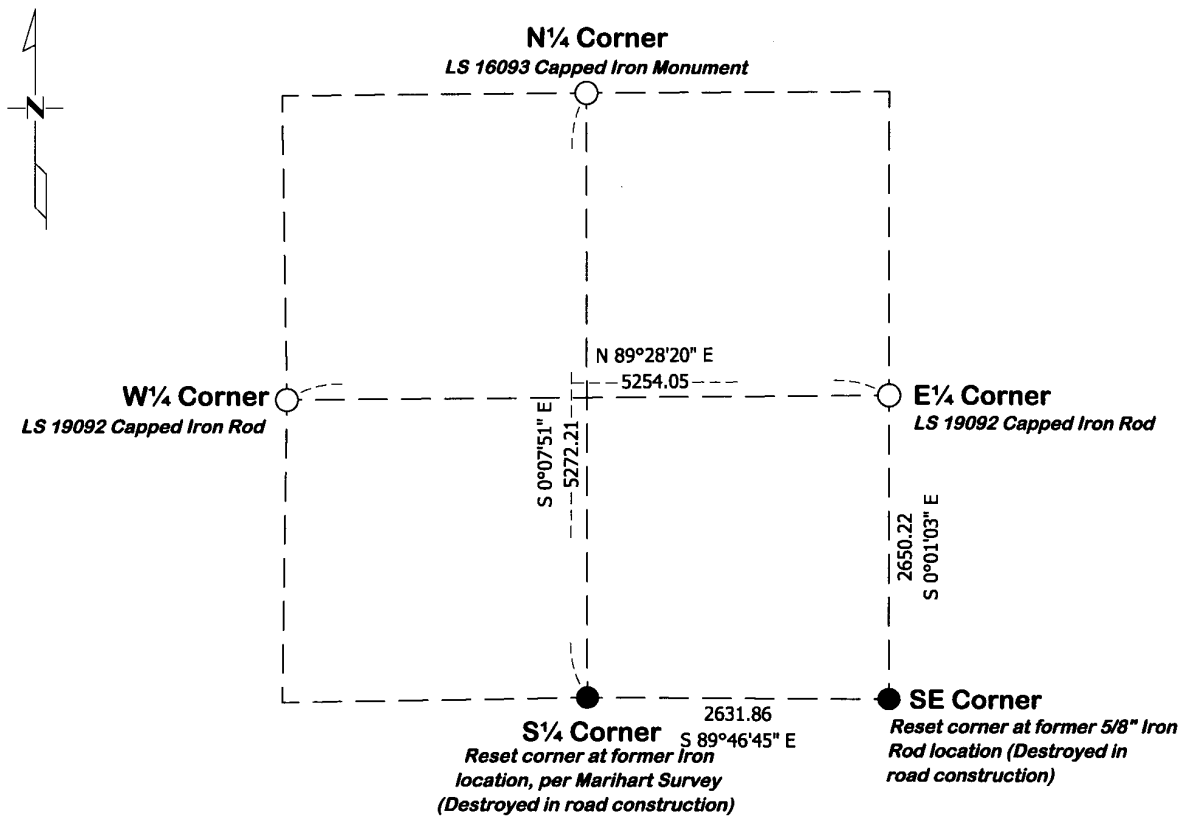
# CERTIFICATE OF LOCATION OF GOVERNMENT CORNERS

Land Survey Monuments situated in Section 25, Township 116, Range 40 West of the Fifth Principal Meridian, Yellow Medicine County, State of Minnesota.

**Statement of Evidence:**

1858 - Original Government Land Office Survey (Twp Lines)	1931 - County Surveyor Record Book, Page 538
1865 - Original Government Land Office Survey (Subdivision)	1998 - Duane A. Bonnema, LS 14895 Survey
1893 - County Surveyor Record Book, Page 110	2013 - Matthew D. Runke, LS 46171 Survey
1913 - County Surveyor Record Book, Page 291	Various Dates - Roy Marihart Surveys
1918 - County Surveyor Record Book, Page 403	2015± - Highway Engineer work for current road project
1930 - County Surveyor Record Book, Page 509	

○ Found Monument from former survey      ● Placed "46169 46171" Capped Iron Monument



Corners to be Indexed

Corner	Section	Township	Range
S 1/4	25	116	40
SE	25	116	40

I hereby certify that this survey, plan, or report was prepared by me or under my direct supervision and that I am a duly Licensed Land Surveyor under the laws of the state of Minnesota.

*Matthew D. Runke*      4/11/17  
 \_\_\_\_\_      \_\_\_\_\_  
 Signature      Date

Matthew D. Runke - LS 46171

**Doc# 266087 Fee: \$0.00 1 Pages**

Property & Public Services  
 Property Records Division  
 Yellow Medicine County, Minnesota  
 I hereby certify that the within instrument was filed on April 13, 2017 at 10:15 AM

Janel Timm, Yellow Medicine County Recorder

By *Delana Blood* Deputy

*(reserved for recording data)*

Doc# 259308 Fee: \$0.00 2 Pages

Property & Public Services  
Property Records Division  
Yellow Medicine County, Minnesota  
I hereby certify that the within instrument  
was filed on January 7, 2014 at 9:50 AM

Janel Timm, Yellow Medicine County Recorder

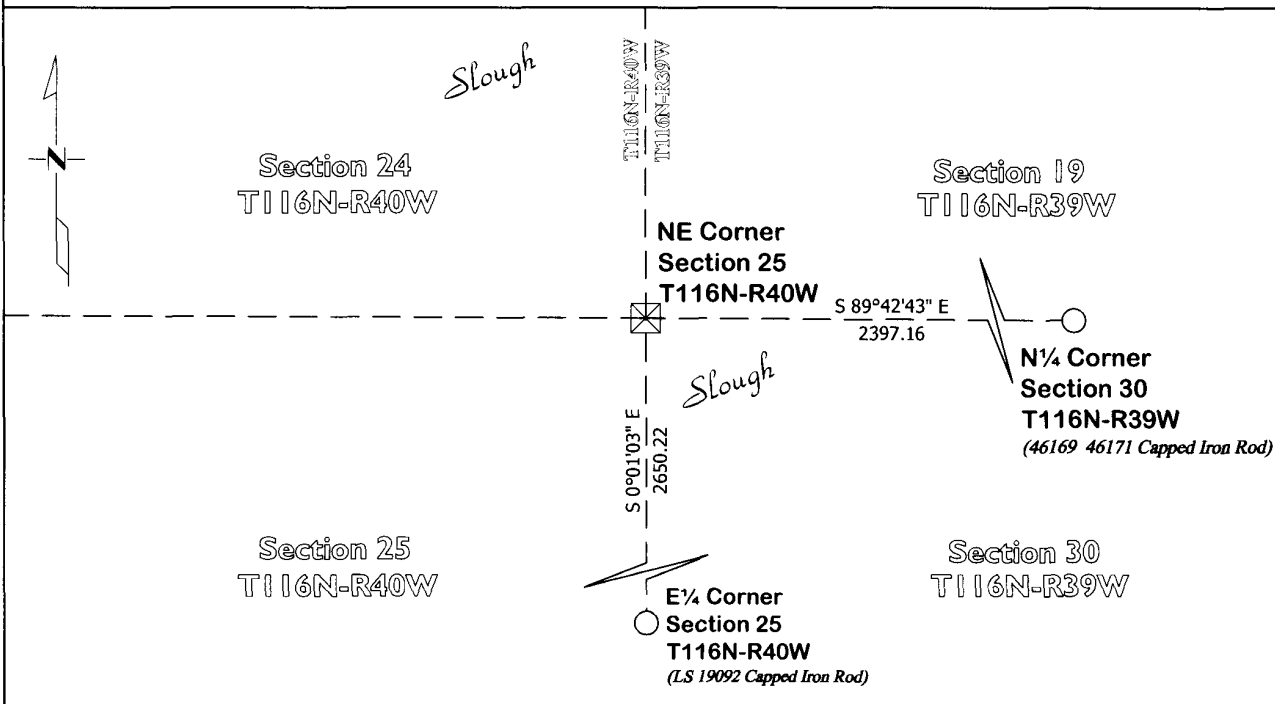
By Kelley Kauger Deputy

### CERTIFICATE OF LOCATION OF GOVERNMENT CORNER

Northeast Corner of Section 25, Township 116, Range 40  
Fifth Principal Meridian, State of Minnesota, County of Yellow Medicine

At the corner location shown on the sketch:

- On Aug. 21, 2013 found 6"x6"x20" Square Cut Stone Lying Flat in Slough  
DATE
- left monument as found       lowered monument       removed monument (explain)
- On Nov. 26, 2013 placed an Iron Rod with a "46169 46171" stamped plastic cap on North side of the  
DATE  
6" x 6" x 20" Square Cut Stone



Statement of evidence for this corner location is on back of this page.

I hereby certify that this survey, plan, or report was prepared by me or under my direct supervision and that I am a duly Licensed Land Surveyor under the laws of the state of Minnesota.

Signature Matthew D. Runke  
Date 11/3/14

Typed or Printed Name: Matthew D. Runke  
Reg. No. 46171

## **STATEMENT OF EVIDENCE**

### **Northeast Corner Section 25, T116N-R40W**

- 1858 W.J. Neely was contracted by the United States Government Land Office to perform the Original Public Land Survey of this township boundary. Neely records in his field notes that he, "set post corner to sect. 19, 24, 25 & 30 deposited coal made mound trench & pits as per instructions"
- 1919 John Norgaard, County Surveyor, records in the County Surveyor's Record Book, page 417, dimensions to this corner position but doesn't mention what type of monument was found.
- Nov. 11, 1931 John Norgaard, County Surveyor, records in the County Surveyor's Record Book, page 538, dimensions to this corner position but doesn't mention what type of monument was found.
- 1961 Minnesota Department of Transportation Highway Right of Way Map No. 3-62A, notes a "stone inp." and dimensions from the highway center line to this corner position.
- March 19, 1998 Duane A. Bonnema, LS 14895, notes "IP" at this corner position.
- Nov. 19, 2008 Matthew D. Runke, LS 46171, notes a "Found Iron Monument form former Survey" and dimensions to this corner position.
- Unknown Dates Roy Marhart, LS 19092, while performing surveys in Section 24 & 25 of T116N-R40W and Section 30 of T116-R39W notes he found and "Iron Pipe" at this corner position.
- Nov. 13, 2012 Matthew D. Runke, LS 46171, searched for and was unable to recover the Iron Monument at this corner position. Runke then probed an area extending 2.0' North, 2.0' South, 2.0' East and 2.0' West of the former Iron Monument location and found a 6"x6"x20" square cut stone lying flat. This stone is typical of the type of monument John Norgaard would have used to perpetuate section corner positions. This stone was apparently set in 1919 as part of his survey. The Minnesota Department of Transportation recovered this stone in 1961 as part of their survey work for the highway, and their record distance is within 2' of the current measurements between the stone and highway center line. This stone also fits well with the 1919 and the 1930 Norgaard Survey dimensions along the north line of Section 30, T116N-R39W. The 6"x6"x20" square cut stone appears to be the best evidence of the location of this section corner. An Iron Rod with a "46169 46171" stamped plastic cap was set along the North side of the stone.

# CERTIFICATE OF LOCATION OF GOVERNMENT CORNER

EAST QUARTER Corner of Section 27, Township 116, Range 40, 5TH P.M.

STATE OF MINNESOTA, County of YELLOW MEDICINE

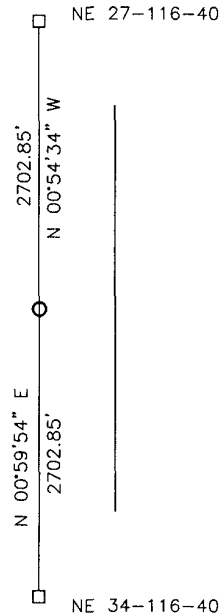
At the corner location shown on the sketch:

On \_\_\_\_\_ found a \_\_\_\_\_  
DATE

left monument as found,  lowered monument,  removed monument (explain)

On 12-01-2017 placed a 5/8" IRON WITH SEAL #43844.  
DATE

### SKETCH OF REFERENCE TIES



Minnesota State Plane Coordinate  
System Yellow Medicine County Datum  
NAD83 (1996)

N: 204048.462  
E: 566172.967

Statement of evidence relative to this corner location is on back of page.

I hereby certify that this document and the data contained herein was prepared by me or under my direct supervision.

[Signature] 3/16/18  
SIGNATURE DATE

Registration No. 43844

- Land Surveyor,  Professional Engineer
- County Surveyor,  County Engineer

**Doc# 269590 Fee: \$0.00 2 Pages**

Property & Public Services  
Property Records Division  
Yellow Medicine County, Minnesota  
I hereby certify that the within instrument  
was filed on October 26, 2018 at 1:45 PM

Janel Timm, Yellow Medicine County Recorder

By [Signature] Deputy

Statement of Evidence

In 1865, Davis and Webb did the original subdivision of the township.

On December 1, 2017, Bueltel-Moseng Land Surveying set a 5/8" with seal #43844 midway and on line between the section corners.

# CERTIFICATE OF LOCATION OF GOVERNMENT CORNER

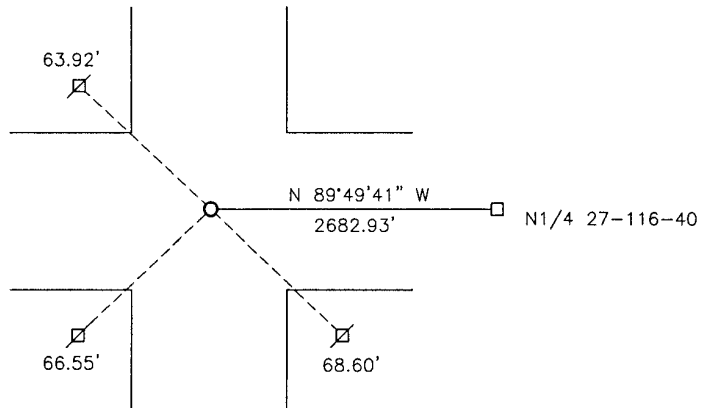
NORTHEAST Corner of Section 28, Township 116, Range 40, 5TH P.M.

STATE OF MINNESOTA, County of YELLOW MEDICINE

At the corner location shown on the sketch:

- On 12-01-2017 found a 5/8" IRON.  
DATE
- left monument as found,  lowered monument,  removed monument (explain)
- On 12-01-2017 placed a 5/8" IRON WITH SEAL #43844.  
DATE

### SKETCH OF REFERENCE TIES



Minnesota State Plane Coordinate  
System Yellow Medicine County Datum  
NAD83 (1996)  
N: 206725.700  
E: 560764.301

Nail and bottle cap in utility pole NW 63.92'  
Nail and bottle cap in utility pole SW 66.55'  
Nail and bottle cap in utility pole SE 68.60'

Statement of evidence relative to this corner location is on back of page.

I hereby certify that this document and the data contained herein was prepared by me or under my direct supervision.

*David Smith* 3/16/18  
SIGNATURE DATE

Registration No. 43844

- Land Surveyor,  Professional Engineer
- County Surveyor,  County Engineer

**Doc# 269589 Fee: \$0.00 2 Pages**

Property & Public Services  
Property Records Division  
Yellow Medicine County, Minnesota  
I hereby certify that the within instrument was filed on October 26, 2018 at 1:40 PM

Janel Timm, Yellow Medicine County Recorder

By *Kelly Kauger* Deputy



## Statement of Evidence

In 1865, Davis and Webb did the original subdivision of the township.

The Yellow Medicine County Highway Department recorded an iron rod at the corner.

On December 1, 2017, Bueltel-Moseng Land Surveying found a 5/8" iron at the corner. We left the iron in place and put a seal with #43844 on it.

# CERTIFICATE OF LOCATION OF GOVERNMENT CORNER

NORTHEAST Corner of Section 34, Township 116, Range 40, 5TH P.M.

STATE OF MINNESOTA, County of YELLOW MEDICINE

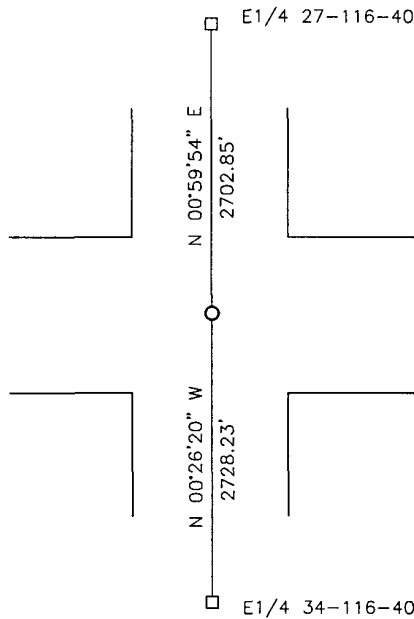
At the corner location shown on the sketch:

On \_\_\_\_\_ found a \_\_\_\_\_  
DATE

left monument as found,  lowered monument,  removed monument (explain)

On 12-01-2017 placed a SURVEY SPIKE WITH SEAL #43844.  
DATE

### SKETCH OF REFERENCE TIES

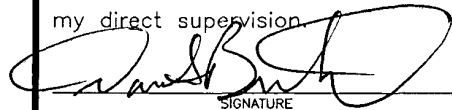


Minnesota State Plane Coordinate  
System Yellow Medicine County Datum  
NAD83 (1996)

N: 201346.026  
E: 566125.873

Statement of evidence relative to this corner location is on back of page.

I hereby certify that this document and the data contained herein was prepared by me or under my direct supervision.

 3/16/18  
SIGNATURE DATE

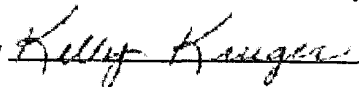
Registration No. 43844

Land Surveyor,  Professional Engineer  
 County Surveyor,  County Engineer

**Doc# 269591 Fee: \$0.00 2 Pages**

Property & Public Services  
Property Records Division  
Yellow Medicine County, Minnesota  
I hereby certify that the within instrument was filed on October 26, 2018 at 1:50 PM

Janel Timm, Yellow Medicine County Recorder

By  Deputy

## Statement of Evidence

In 1865, Davis and Webb did the original subdivision of the township.

The Yellow Medicine County Highway Department recorded a pin at the corner with county coordinates.

On December 1, 2017, Bueltel-Moseng Land Surveying searched for a pin at the corner. We found nothing. We set a survey spike with seal #43844 using the Yellow Medicine County Highway Department coordinates. It fell in the center of the intersection.