

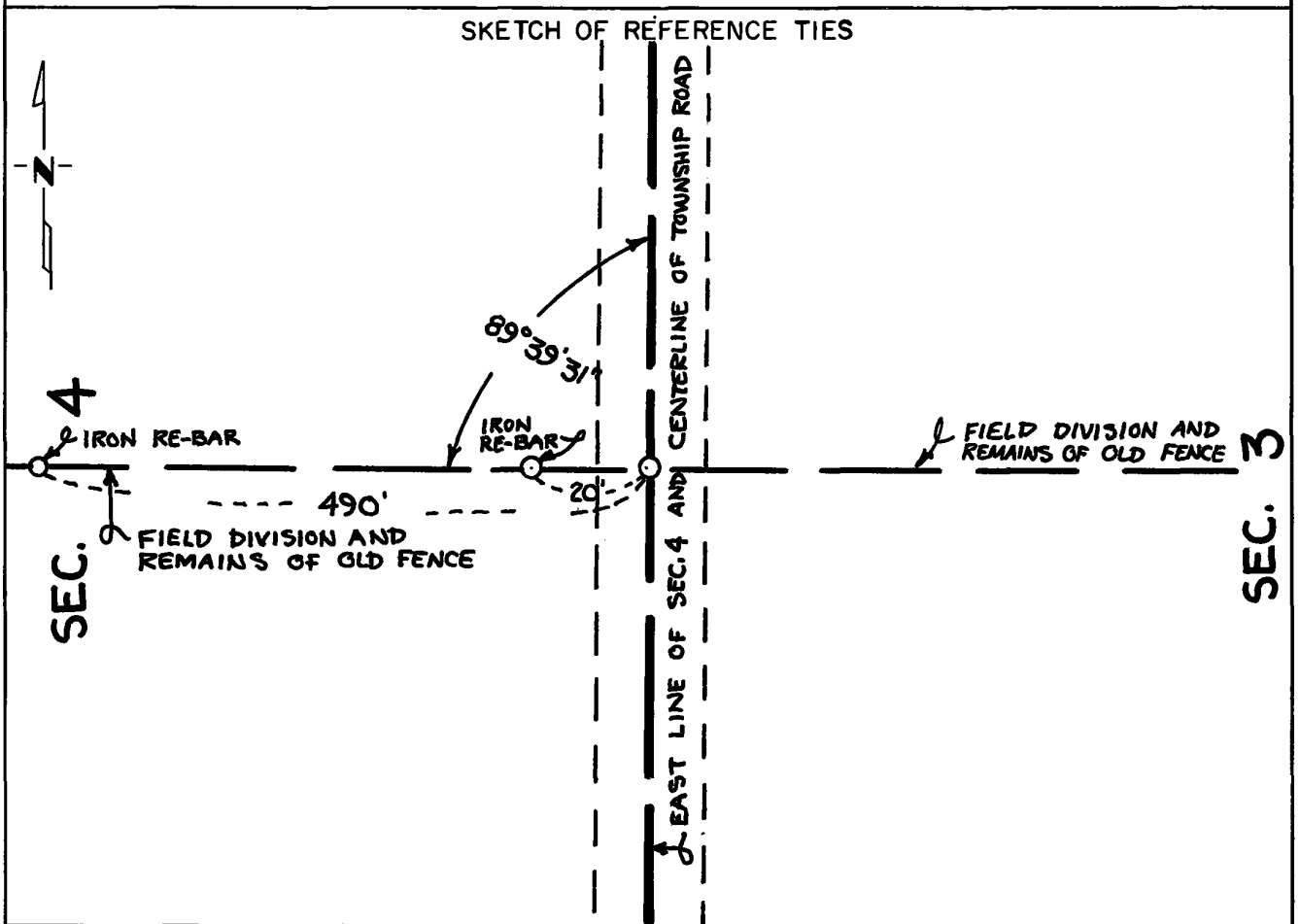
CERTIFICATE OF LOCATION OF GOVERNMENT CORNER

East Quarter _____ Corner of Section 4, Township 116, Range 41, 5th P.M.

STATE OF MINNESOTA, County of Yellow Medicine

At the corner location shown on the sketch:

- On Oct. 7, 1980 found a nothing marking the corner
DATE
- left monument as found, lowered monument, removed monument (explain)
- On Oct. 7, 1980 placed a 5/8" diameter by 24" long iron re-bar on the
DATE
centerline of a township road



Statement of evidence relative to this corner location is on back of page.

I hereby certify that this document and the data contained herein was prepared by me or under my direct supervision.

Robert Jones 10/21/80
SIGNATURE DATE

Registration No. 11864

Land Surveyor, Professional Engineer
 County Surveyor, County Engineer

OFFICE OF THE COUNTY RECORDER
County of Yellow Medicine

I hereby certify that this document was filed in the Co. Recorder's office at 9:35 A.M. on the 23 day of October A.D., 19 80

County Recorder, Norman J. Opdahl

By Kay Nordahl, Deputy
DOCUMENT NO. 177049

Statement of Evidence: East Quarter Corner of Section 4-116-41

- 1865 - The original government survey of the sections in the township was done by Charles Davis and J. W. Webb Jr. A wood post was set in a dirt mound to mark the corner.
- 1980 - No record was found that anything has been set to mark this corner since the original government survey in 1865. R. C. Jones set the corner on line between the northeast and southeast corners of the section and on line with field divisions and the remains of old fence lines east and west. The fences and field divisions have probably been regarded as the quarter section lines for many, many years. This location is 36.25 feet south of the lost location. However, it is 2660.00 feet north of the southeast corner of the section and according to the section breakdown, results in there being nearly 163 acres in the southeast quarter of the section.

CERTIFICATE OF LOCATION OF GOVERNMENT CORNER

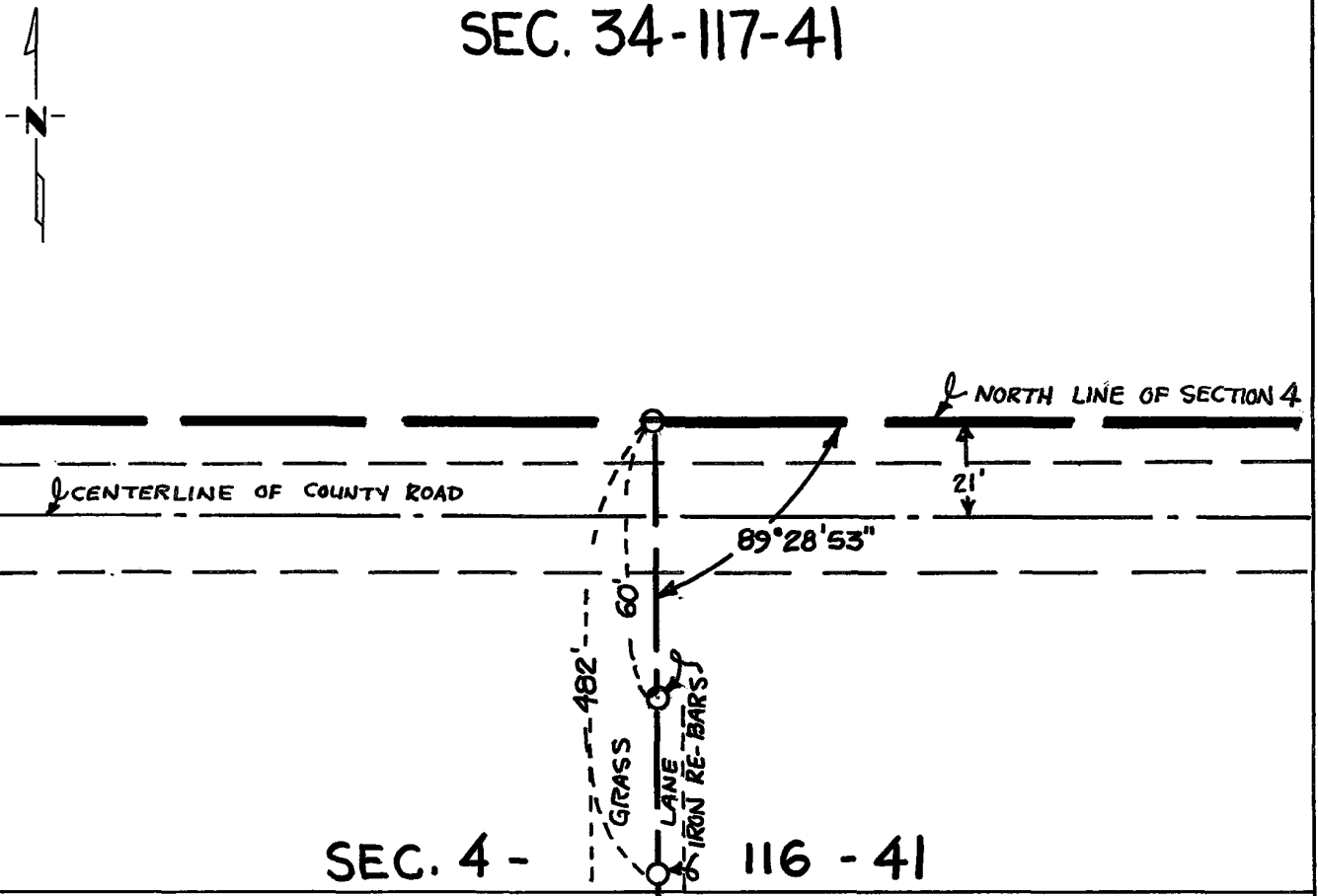
North Quarter Corner of Section 4, Township 116, Range 41, 5th P.M.
 STATE OF MINNESOTA, County of Yellow Medicine

At the corner location shown on the sketch:

- On Oct. 7, 1980 found a nothing marking the corner
DATE
- left monument as found, lowered monument, removed monument (explain)
- On Oct. 7, 1980 placed a 5/8" diameter by 24" long iron re-bar 21' north
DATE of the centerline of a county road

SKETCH OF REFERENCE TIES

SEC. 34-117-41



Statement of evidence relative to this corner location is on back of page.

I hereby certify that this document and the data contained herein was prepared by me or under my direct supervision.

Robert C Jones 10/21/80
SIGNATURE DATE

Registration No. 11864

- Land Surveyor, Professional Engineer
 County Surveyor, County Engineer

OFFICE OF THE COUNTY RECORDER
 County of Yellow Medicine

I hereby certify that this document was filed in the Co. Record. office at 9:30 A.M. on the 23 day of October A.D., 19 80

County Recorder, Norman J. Opdahl

By Kay Nordahl, Deputy
 DOCUMENT NO. 177048

Statement of Evidence: North Quarter Corner of Section 4-116-41

- 1858 - The Fourth Standard Parallel was originally surveyed by William Neely.
- 1865 - The original government survey of the sections in the township was done by Charles Davis and J. W. Webb Jr. A wood post was set in a dirt mound to mark the corner.
- 1980 - No record was found that anything has been set to mark this corner since the original government survey in 1865. R. C. Jones set the corner midway and on line between the northwest and northeast corners of the section at the lost location. The corner as set is 21 feet north of the centerline of a county road in the ditch.

CERTIFICATE OF LOCATION OF GOVERNMENT CORNER

Northeast Corner of Section 4, Township 116, Range 41, 5th P.M.

STATE OF MINNESOTA, County of Yellow Medicine

At the corner location shown on the sketch:

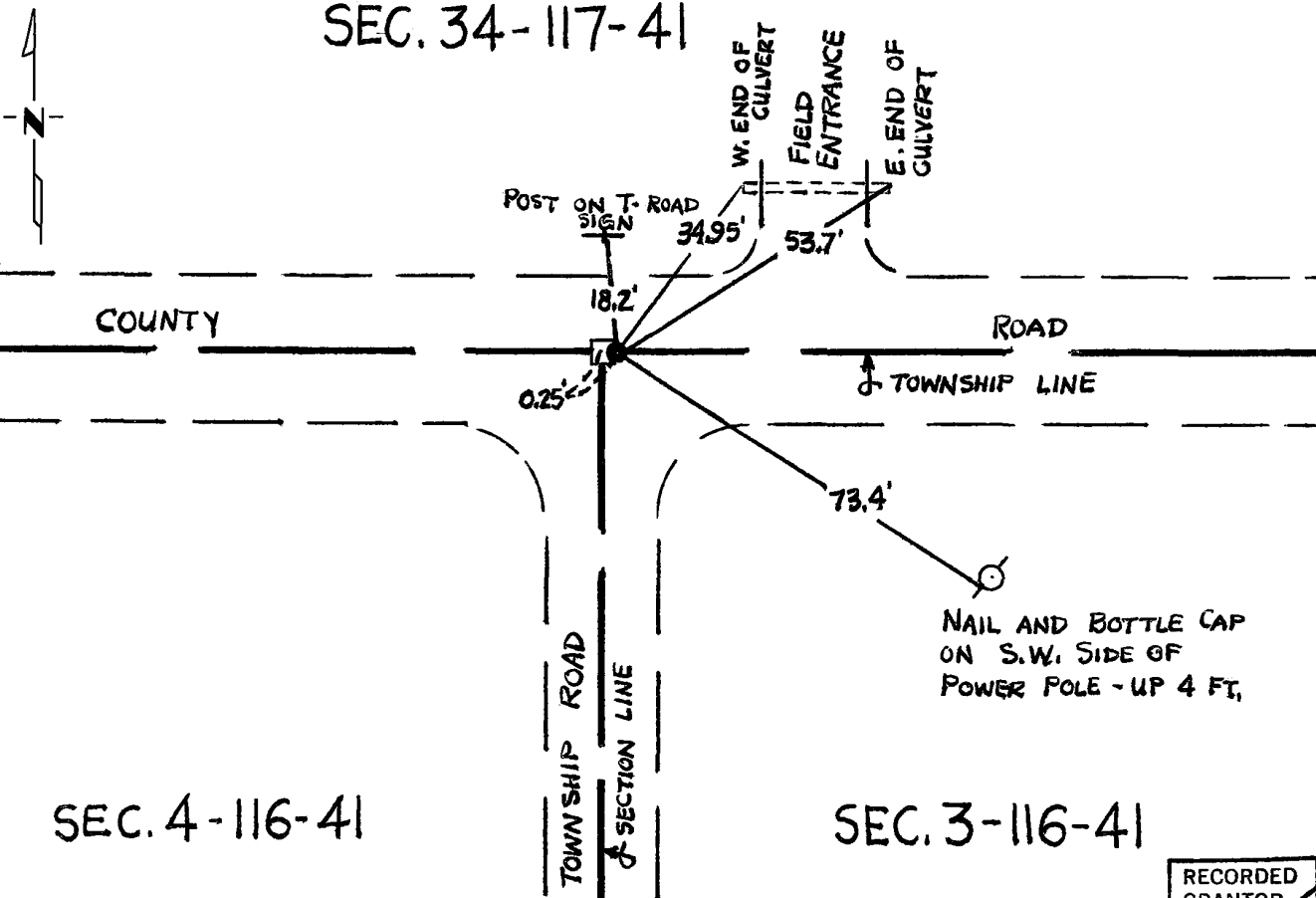
On Sept. 20, 1980 found a stone monument 1.75 feet below the road surface
DATE

left monument as found, lowered monument, removed monument (explain)

On Sept. 20, 1980 placed a 5/8" diameter by 2' long iron re-bar along the east
DATE edge of the stone, 3" east of the center of the stone, and 2" below road
surface.

SKETCH OF REFERENCE TIES

SEC. 34-117-41



SEC. 4-116-41

SEC. 3-116-41

RECORDED
GRANTOR
GRANTEE
INDEXED

Statement of evidence relative to this corner location is on back of page.

I hereby certify that this document and the data contained herein was prepared by me or under my direct supervision.

Robert C. Jones 9/24/80
SIGNATURE DATE

Registration No. 11864

Land Surveyor, Professional Engineer
 County Surveyor, County Engineer

OFFICE OF THE COUNTY RECORDER
County of Yellow Medicine

I hereby certify that this document was filed in the Co. Recorders office at 1:00 P.M. on the 25 day of September A.D., 19 80

County Recorder Norman J. Opdahl

By Kay Nordahl, Deputy
DOCUMENT NO. 176890

Statement of Evidence: Northeast Corner of Section 4 - 116 - 41

- 1858 - The Fourth Standard Parallel was originally surveyed by William Neely.
- 1865 * The original government survey of the sections in the township was done by Charles Davis and J.W. Webb Jr. A wood pest was set in a dirt mound to mark the corner.
- 1901 - John Nergaard, County Surveyor, found evidence of the government mound and set a 6" X 6" X 24" Jasper stone monument in the mound to mark the corner.
- 1939 - The Yellow Medicine County Highway Department ^{found} the stone at the corner.
- 1949 - Same as 1939
- 1952 - Same as 1939
- 1980 - Robert C. Jones found a stone monument in place 1.75 feet below the road surface. Placed a 5/8" diameter by 2' long iron re-bar along the east edge of the stone. Therefore, the iron re-bar is 3" east of the actual location of the section corner. The top of the re-bar is about 2" below the road surface.

Survey records show a continuous chain of evidence that the stone monument is at the original location of the section corner.

RECORDED
GRANTOR
GRANTEE
INDEXED

176890
OFFICE OF COUNTY RECORDER }
County of Yellow Medicine, Minn. } ss

I hereby certify that the within instrument was filed in this office for record on the 25 day of Sept. A. D. 19 80, at 1:00 o'clock P. M. and was duly recorded in book of Page placed on file

Norman J. Opdahl
County Recorder
By Kay Nerdahl
Deputy

CERTIFICATE OF LOCATION OF GOVERNMENT CORNER

Northeast Corner of Section 5, Township 116, Range 41, 5th P.M.
Also Northwest Corner of Section 4
STATE OF MINNESOTA, County of Yellow Medicine

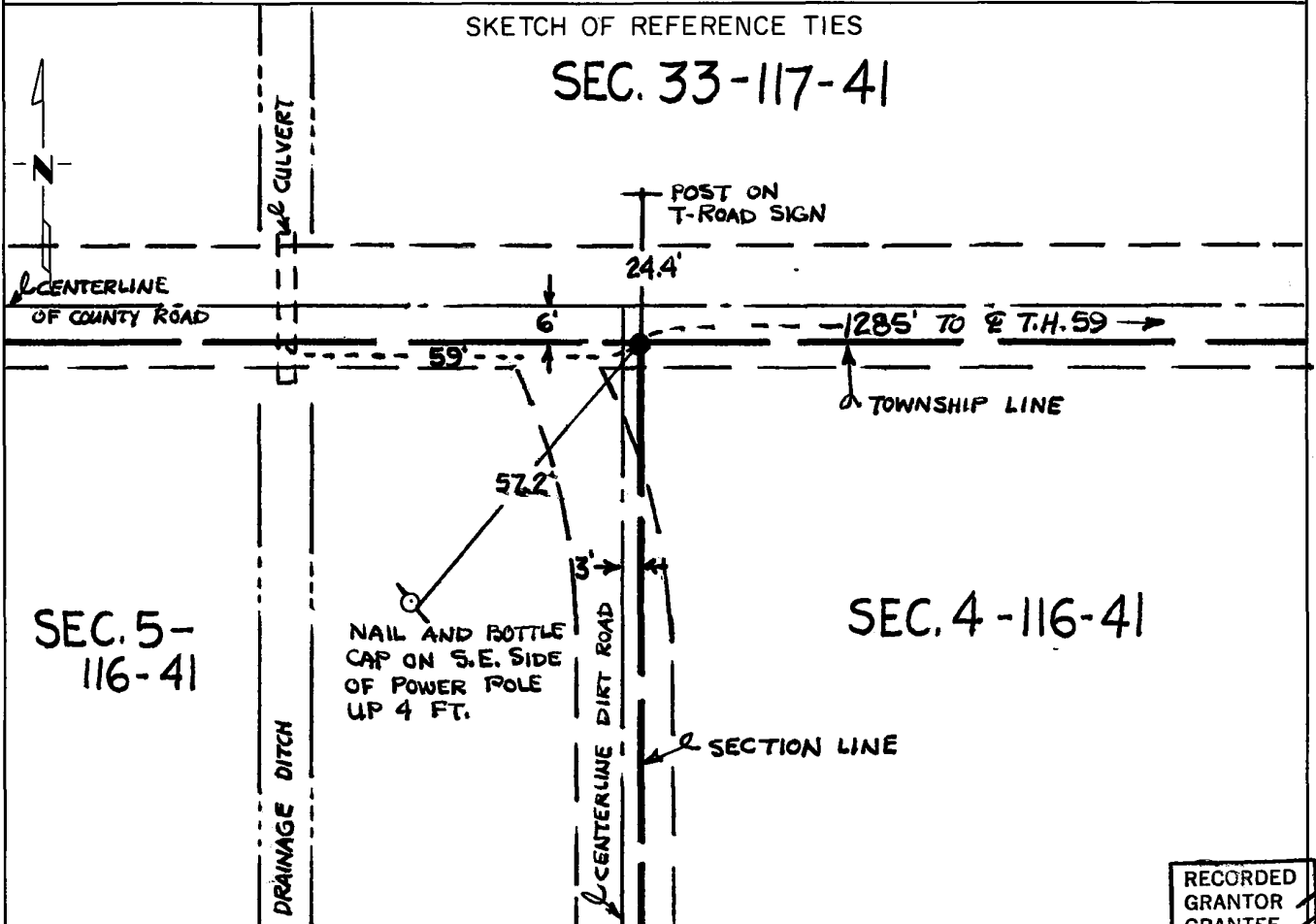
11.280

At the corner location shown on the sketch:

On Sept. 20, 1980 found a 1/2" diameter iron pipe about 2" below the road surface.
DATE

left monument as found, lowered monument, removed monument (explain)

On _____ placed a Left monument as found
DATE



RECORDED
GRANTOR
GRANTEE
INDEXED

Statement of evidence relative to this corner location is on back of page.

I hereby certify that this document and the data contained herein was prepared by me or under my direct supervision.

Robert C. Jones 9/24/80
SIGNATURE DATE

Registration No. 11864

Land Surveyor, Professional Engineer
 County Surveyor, County Engineer

OFFICE OF THE COUNTY RECORDER
County of Yellow Medicine

I hereby certify that this document was filed in the Co. Recorders office at 1:05 P.M. on the 25 day of September A.D., 19 80

County Recorder Norman J. Opdahl
By Kay Nordahl, Deputy
DOCUMENT NO. 176891

Statement of Evidence: Northeast Corner of Section 5 - 116 - 41

- 1858 - The Fourth Standard Parallel was originally surveyed by William Neely.
- 1865 - The original government survey of the sections in the township was done by Charles Davis and J.W. Webb Jr. A wood post was set in a dirt mound to mark the corner.
- 1901 - John Nergaard, County Surveyor, found evidence of the government mound and set a 6" x 6" x 24" jasper stone monument in the mound to mark the corner.
- 1946 - A Minnesota Highway Department survey crew found the stone monument in place at a distance of 1285 ft. west of the centerline of T.H. 59.
- 1980 - Robert C. Jones found an iron pipe about 2" below the road surface and 1285 ft. west of the centerline of T.H. 59. It is 6 ft. south of the centerline of the east/west county road and 3 ft. east of the centerline of a dirt road south.

It is not known who set the iron pipe but it fits the 1946 Minnesota Highway Department survey and survey records seem to indicate that it perpetuates the location of the original section corner.

RECORDED
GRANTOR
GRANTEE
INDEXED

176891
OFFICE OF COUNTY RECORDER } ss
County of Yellow Medicine, Minn. }

I hereby certify that the within instrument was filed in this office for record on the 25 day of Sept. A. D. 19 80, at 1:05 o'clock P. M. and was duly recorded in book of Placed Page -
Norman J. Opabe
County Recorder
By Kay Nordahl Deput

CERTIFICATE OF LOCATION OF GOVERNMENT CORNER

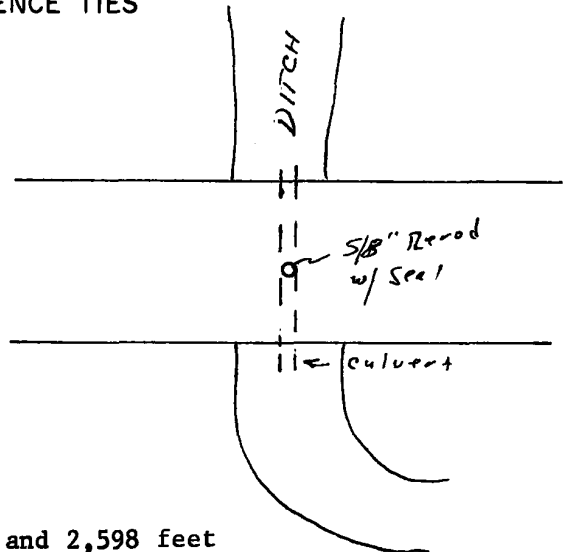
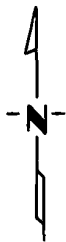
North Quarter Corner of Section 7, Township 116 N., Range 41 W., 5 th P.M.

STATE OF MINNESOTA, County of Yellow Medicine

At the corner location shown on the sketch:

- On _____ found a _____ I did not dig the ditch and culvert were dug
DATE
 destroying any corner
 - left monument as found, lowered monument, removed monument (explain)
- On 27 Aug. 1986 placed a 5/8 inch rerod with seal See Back
DATE

SKETCH OF REFERENCE TIES



Corner is on line between section corners and 2,598 feet West of the Northeast Section corner and 2,389 feet West of the Northwest Section corner.

RECORDED
GRANTED
GRANTED
INDEXED

Statement of evidence relative to this corner location is on back of page.

I hereby certify that this document and the data contained herein was prepared by me or under my direct supervision.

Boyle E. Money 30, Aug 1986
SIGNATURE DATE

Registration No. 119430
 Land Surveyor, Professional Engineer
 County Surveyor, County Engineer

OFFICE OF THE COUNTY RECORDER
 County of Yellow Medicine

I hereby certify that this document was filed in the Co. Recorders office at 11:10 AM. on the 2 day of September A.D., 19 86

County Recorder Norman J. Opdahl
 By Kay Nordahl, Deputy
 DOCUMENT NO. 189058

Statement of Evidence:

In 1913 John Norgaard than County Surveyor could not find the corner he set it on line between the section corners and 2,598 feet East of the Northeast corner and 2,389 feet West of the Northwest corner, he did not set a monument

In 1916 John Norgaard set a jasper stone by the same method as above.

On Aug. 27, 1986 I set a 5/8 inch rerod with seal by the same method, the corner was destroyed by construction of ditch and culvert.

CERTIFICATE OF LOCATION OF GOVERNMENT CORNER

Northeast Corner of Section 7, Township 116 N., Range 41 W., 5 th P.M.

STATE OF MINNESOTA, County of Yellow Medicine

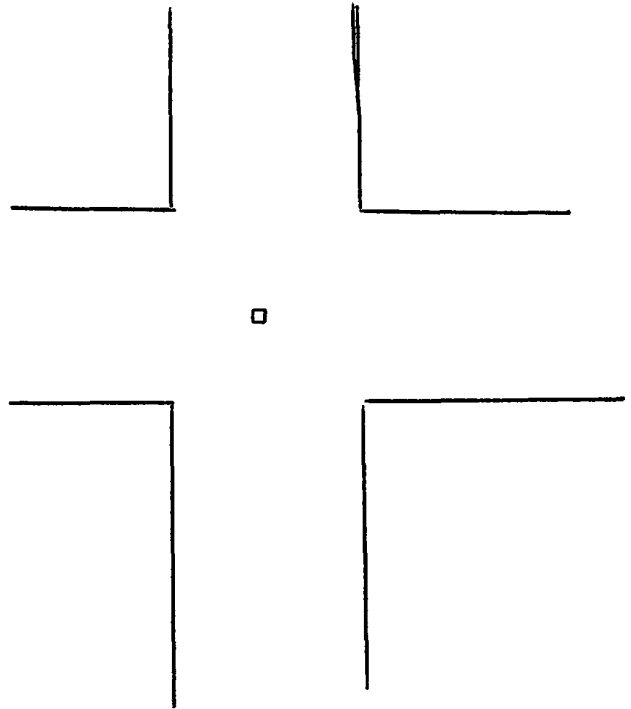
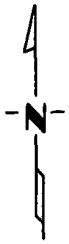
At the corner location shown on the sketch:

On 27, Aug. 1986 found a Square cut Stone 3 feet below road surface
DATE

left monument as found, lowered monument, removed monument (explain)

On 27 Aug. 1986 placed a 5/8 inch rerod at the road surface above stone
DATE

SKETCH OF REFERENCE TIES



There was nothing to tie it to.

Statement of evidence relative to this corner location is on back of page.

I hereby certify that this document and the data contained herein was prepared by me or under my direct supervision.

Lytle E. Mooney 30 Aug 1986
SIGNATURE DATE

Registration No. 11943

- Land Surveyor, Professional Engineer
 County Surveyor, County Engineer

OFFICE OF THE COUNTY RECORDER
County of Yellow Medicine

I hereby certify that this document was filed in the Co. Recorders office at 11:05 A.M. on the 2 day of September A.D., 1986

County Recorder Norman J. Opdahl

By Kay Nordahl, Deputy

DOCUMENT NO. 189057

RECORDED
GRANTOR
GRANTEE
INDEXED

Statement of Evidence:

1913 John Norgaard found and set Jasper Stone at original corner

1916 John Norgaard found and used the corner.

On Aug. 27, 1986 I dug up stone and set a 5/8 inch rerod at the road surface.

CERTIFICATE OF LOCATION OF GOVERNMENT CORNER

Northwest Corner of Section 7, Township 116 N., Range 41 W., 5th P.M.

STATE OF MINNESOTA, County of Yellow Medicine

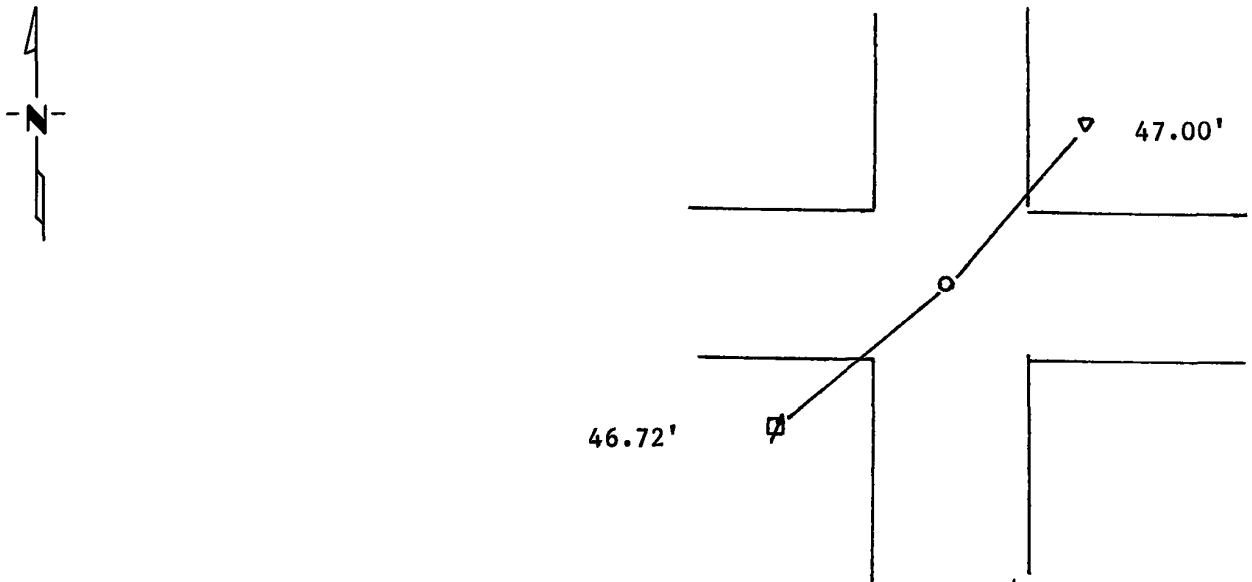
At the corner location shown on the sketch:

On Aug. 27, 86 found a nothing
DATE

left monument as found, lowered monument, removed monument (explain)

On Aug. 27, 1986 placed a 5/8 inch rerod with seal (See Back)
DATE

SKETCH OF REFERENCE TIES



Northeast 47.00 feet PK nail in buried cable marker post

Southeast 46.72 feet PK nail in power pole

Statement of evidence relative to this corner location is on back of page.

I hereby certify that this document and the data contained herein was prepared by me or under my direct supervision.

Lyle E. Maseng 30 Aug 1986
SIGNATURE DATE

Registration No. 119430

Land Surveyor, Professional Engineer

County Surveyor, County Engineer

OFFICE OF THE COUNTY RECORDER

County of Yellow Medicine

I hereby certify that this document was filed in the Co. Recorders office at 11:00 AM. on the 2 day of September A.D., 19 86

County Recorder Norman J. Opdahl

By Kay Nordahl, Deputy

DOCUMENT NO. 189056

RECORDED
GRANTED
GRANTED
INDEXED

Statement of Evidence:

In 1913 John Norgaard found and used the corner and set a Jasper Stone on original corner.

On Aug. 27, 1986 I dug for the stone I found natural ground was only 8 inches below the road surface we dug another 3 feet to clay and found nothing. I set the rerod in the center of the road intersection and measured the distance recorded in 1913 by John Norgaard from the Northeast corner of said section 7, I had the same distance of 4,987 feet.

CERTIFICATE OF LOCATION OF GOVERNMENT CORNER

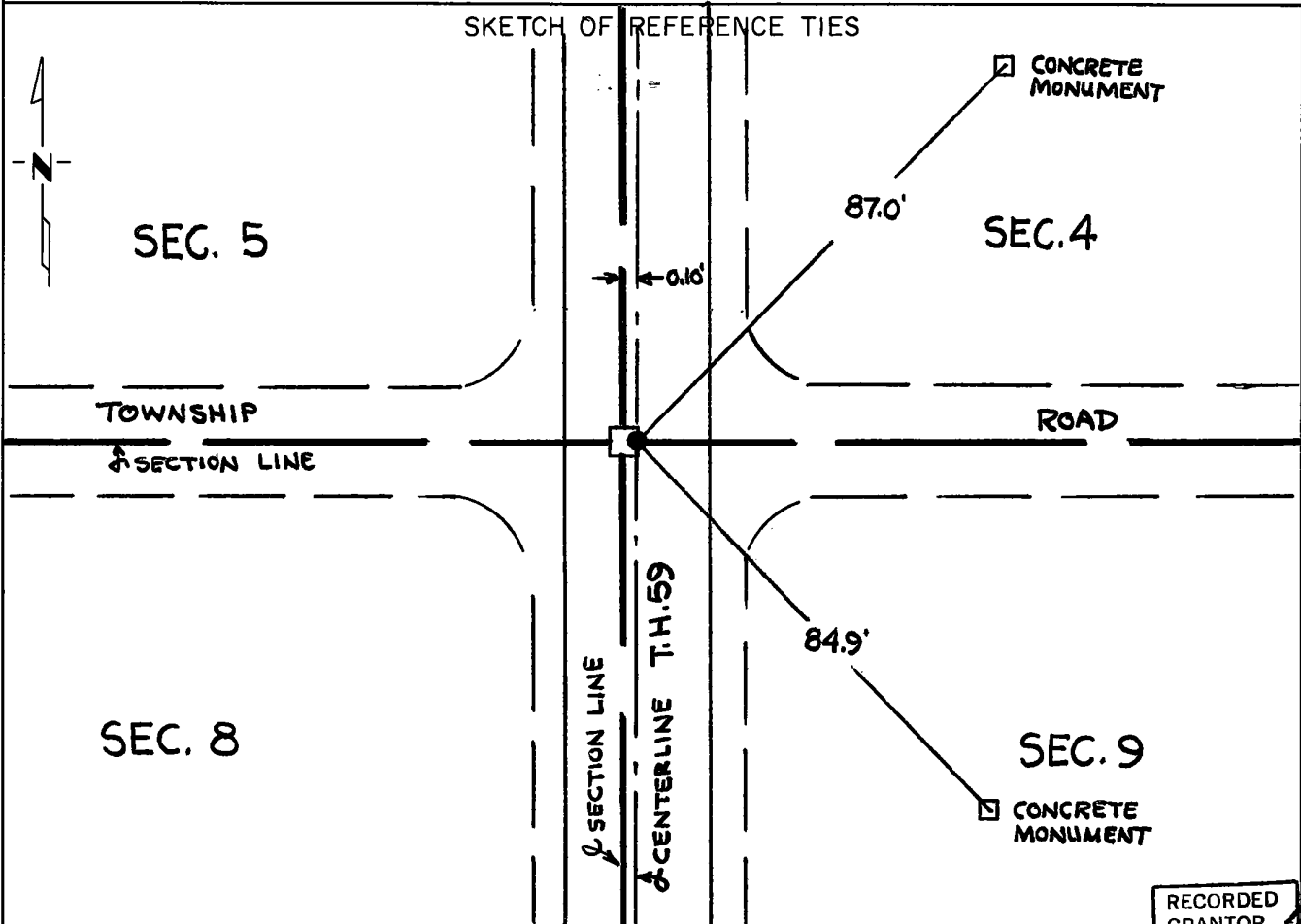
Northeast _____ Corner of Section 8, Township 116, Range 41, 5th P.M.
Also southwest corner of Sec. 4
STATE OF MINNESOTA, County of Yellow Medicine

At the corner location shown on the sketch:

On Sept. 20, 1980 found a an iron pin near road surface which is one-tenth of a
DATE foot east of the section corner

left monument as found, lowered monument, removed monument (explain)

On _____ placed a Left monument as found
DATE _____



RECORDED
GRANTOR
GRANTEE
INDEXED

Statement of evidence relative to this corner location is on back of page.

I hereby certify that this document and the data contained herein was prepared by me or under my direct supervision.

Robert Jones 9/24/80
SIGNATURE DATE

Registration No. 11864

Land Surveyor, Professional Engineer
 County Surveyor, County Engineer

OFFICE OF THE COUNTY RECORDER
County of Yellow Medicine

I hereby certify that this document was filed in the Co. Recorders office at 1:10 P.M. on the 25 day of September A.D., 1980

County Recorder Norman J. Optahl

By Kay Nordahl, Deputy

DOCUMENT NO. 176892

Statement of Evidence:

Northeast corner of Section 8 - 116 - 41

- 1865 - The original government survey was done by Charles Davis and J.W. Webb Jr. A wood pest was set in a dirt mound to mark the corner.
- 1901 - John Norgaard, County Surveyor, found evidence of the government mound and placed a 6" X 6" X 24" jasper stone monument in the mound to mark the corner.
- 1946 - A Minnesota Highway Department survey crew found the stone monument and placed an iron pin over the monument and 0.10 feet east of the center of the monument on the centerline of T.H. 59.
- 1966 - A Minnesota Highway Department survey crew located the iron pin.
- 1980 - Robert C. Jones located the iron pin and the reference ties.

Survey records show a continuous chain of evidence that the iron pin at T.H. 59 engineer's station 317~~4~~35.1 is located one-tenth of a foot east of the original location of the section corner.

RECORDED
GRANTOR #
GRANTEE
INDEXED

176892

OFFICE OF COUNTY RECORDER }
 County of Yellow Medicine, Minn. } ss

I hereby certify that the within instrument was filed in this office for record on the 25 day of Sept. A. D. 19 80, at 1:10 o'clock P. M. and was duly recorded in book placed at on file Page —

Norman J. Opdahl
 County Recorder

By Ray Durdahl
 Deputy

CERTIFICATE OF LOCATION OF GOVERNMENT CORNER

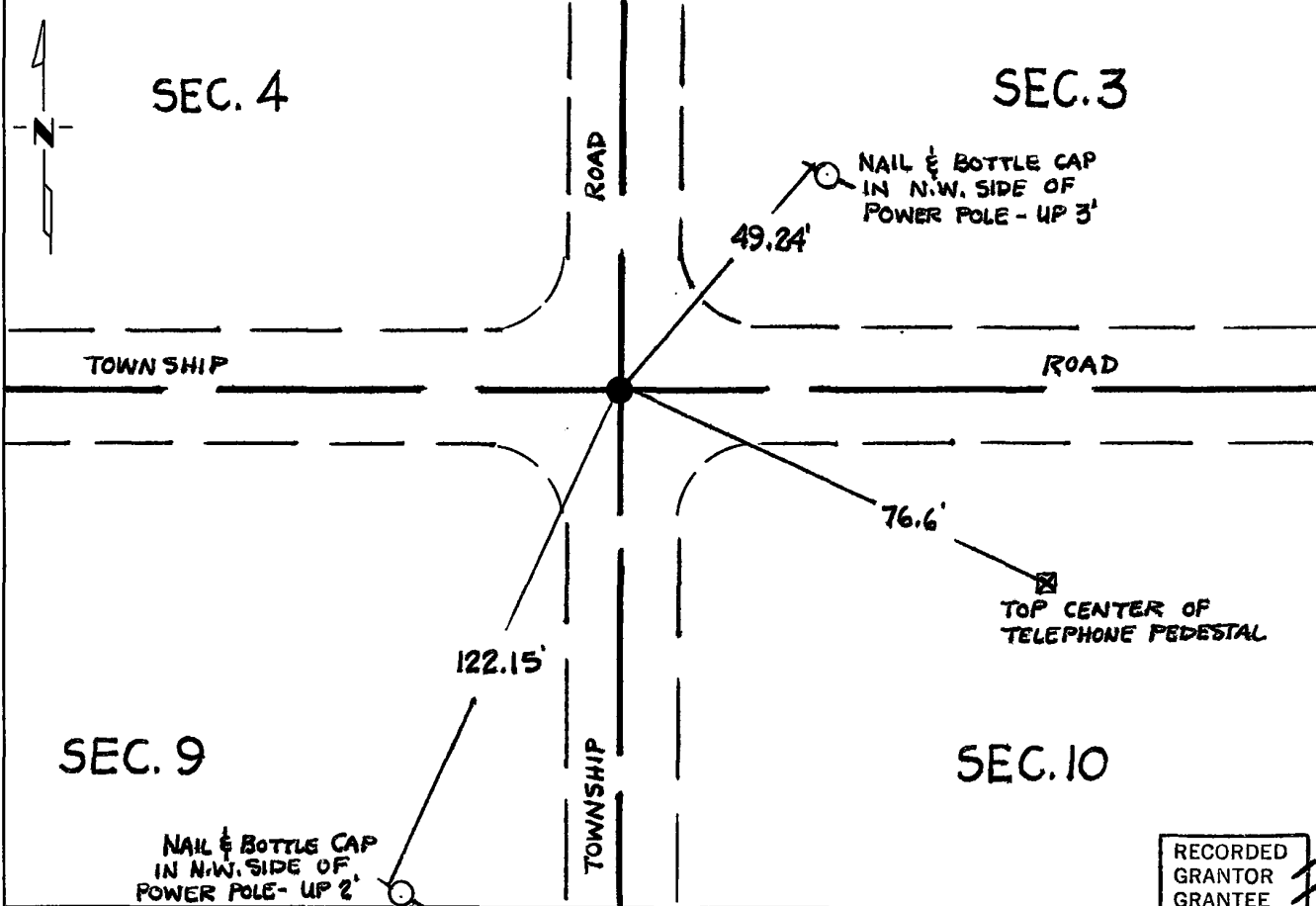
Northeast Corner of Section 9, Township 116, Range 41, 5th P.M.
Also Southeast Corner of Section 4
STATE OF MINNESOTA, County of Yellow Medicine

At the corner location shown on the sketch:

- On Sept. 20, 1980 found a stone monument with a 1" X2" wood stake on the north side of the stone 2.6 ft. below the road surface
DATE
 left monument as found, lowered monument, removed monument (explain)
- On Sept. 20, 1980 placed a 5/8" diameter by 2' long iron re-bar above the stone monument and 2" below the road surface.
DATE

13-299

SKETCH OF REFERENCE TIES



RECORDED
GRANTOR
GRANTEE
INDEXED

Statement of evidence relative to this corner location is on back of page.

I hereby certify that this document and the data contained herein was prepared by me or under my direct supervision.

Robert C. Jones 9/24/80
SIGNATURE DATE

Registration No. 11864

- Land Surveyor, Professional Engineer
 County Surveyor, County Engineer

OFFICE OF THE COUNTY RECORDER
County of Yellow Medicine

I hereby certify that this document was filed in the Co. Recorders office at 1:15 P.M. on the 25 day of September A.D., 19 80

County Recorder Norman J. Opdahl

By Kay Herdahl, Deputy

DOCUMENT NO. 176893

Statement of Evidence: Northeast Corner Section 9 - 116 - 41

- 1865 - The original government survey was done by Charles Davis and J.W. Webb Jr. A wood post was set in a dirt mound to mark the corner.
- 1901 - John Norgaard, County Surveyor, found evidence of the government mound and set a 6" X 6" x 24" jasper stone monument in the mound to mark the corner.
- 1939 - The Yellow Medicine County Highway Department found the stone monument.
- 1980 - Robert C. Jones found a stone monument with a 1" X 2" wood stake along the north side of the stone about 2.6 ft. below the surface of the road. A 5/8" diameter by 2' long iron re-bar was placed above the stone and about 2" below the road surface.

Survey records show a continuous chain of evidence that the stone monument is at the original location of the section corner.

RECORDED
GRANTOR
GRANTEE
INDEXED

176893

OFFICE OF COUNTY RECORDER }
County of Yellow Medicine, Minn. } ss

I hereby certify that the within instrument was filed in this office for record on the 25 day of Sept. A. D. 19 80 at 1:15 o'clock P. M. and was duly recorded in book

put of on file Page —

Norman J. Opdahl
County Recorder

By Kay Nerdahl Deputy

CERTIFICATE OF LOCATION OF GOVERNMENT CORNER

..... N 1/4 Corner of Section..... 11 Township... 116 N Range... 41 W 5th P.M.

STATE OF MINNESOTA, County of... **YELLOW MEDICINE**

At the corner location shown on the sketch

On..... 4-28-09 found a..... **IRON MONUMENT**

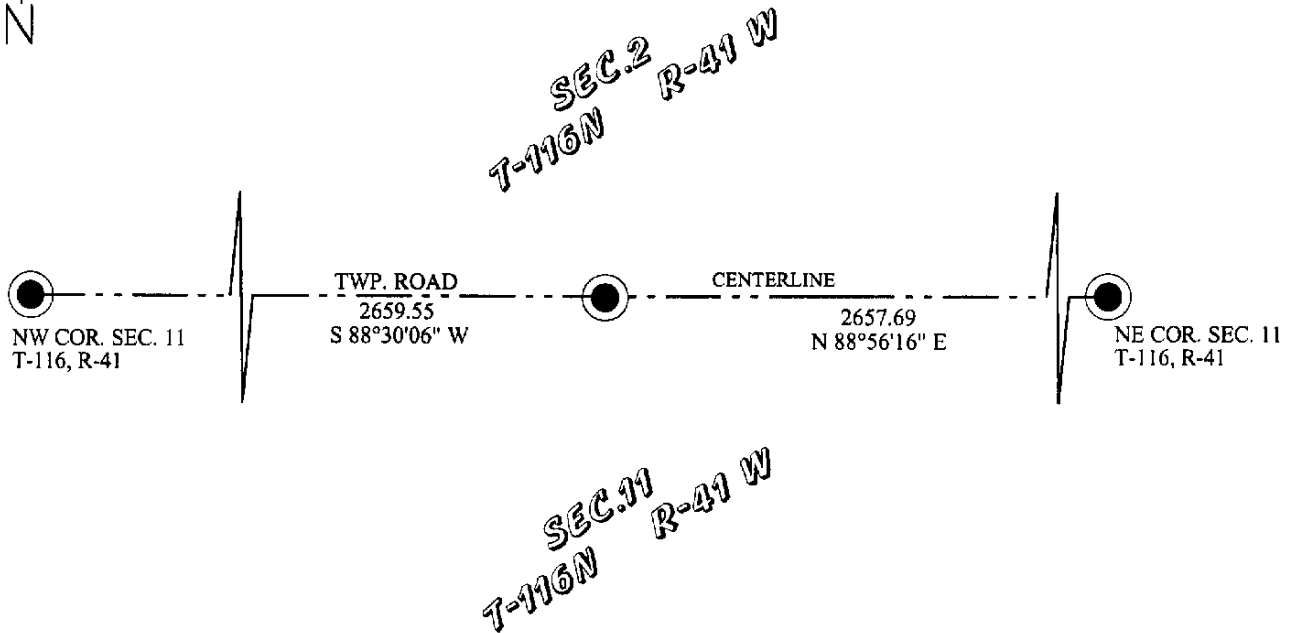
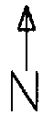
Date

left monument as found, lowered monument removed monument(explain)

On..... placed a.....

Date

SKETCH OF REFERENCE TIES



Statement of evidence relative to this corner location is on back of page.

I hereby certify that this document and the data contained herein was prepared by me or under my direct supervision.

B. O'Malley
Signature

5-5-09
Date

Registration No. 42300

Land Surveyor, County Surveyor,
 Professional Engineer County Engineer.

OFFICE OF THE COUNTY RECORDER

County of

I hereby certify that this document was filed in the County Recorders office at.....M. on theday of.....A.D., 20....

County Recorder.....

By Deputy

DOCUMENT NO.

STATEMENT OF EVIDENCE:

NORTH QUARTER CORNER OF SECTION 11, TOWNSHIP 116 N, RANGE 41 W, YELLOW MEDICINE COUNTY, MINNESOTA

MAY 12 1892 - JONAH PETERMAN (COUNTY SURVEYOR) MADE A RETRACEMENT SURVEY OF SECTION 11, TOWNSHIP 116N, RANGE 41W. HE REPORTS ALL SECTION CORNERS AND QUARTER SECTION CORNERS FOUND, EXCEPT THE WEST QUARTER CORNER. HE SHOWS A DISTANCE OF 40.35 CHAINS TO THE NORTHWEST CORNER AND 40.35 CHAINS TO THE NORTHEAST CORNER. HE NOTES THAT ON MAY 28 & 30, 1895 THE LINE BETWEEN SECTION 2 AND 11 WAS RECHAINED AND FOUND TO BE 80.56 CHAINS. HE NOTES THAT THE CORNER IS 8 FEET SOUTH OF A STRAIGHT LINE. NO TIES WERE RECORDED.

JUNE 14, 1996 BYRON DAHLE PERFORMED A SURVEY IN SECTION 11. HE SET AN IRON MONUMENT AT SINGLE PROPORTION MEASUREMENT AND OCCUPATION TO THE NORTH. HE SHOWS A BEARING AND DISTANCE OF S 88°43'11" W, 2658.60 FEET TO THE NORTHWEST CORNER AND A BEARING AND DISTANCE OF N 88°43' 11" E, 2658.60 FEET TO THE NORTHEAST CORNER. HIS TIES SHOWS THE MONUMENT BEING PLACED IN THE CENTERLINE OF THE ROAD. TIES MADE BUT NOT RECORDED.

DECEMBER 3, 2007 ROY A. MARIHART PERFORMED A SURVEY OF SECTION 11. HIS SURVEY SHOWS FOUND IRON MONUMENTS AT ALL CORNERS. HE SHOWS A BEARING AND DISTANCE OF S 89°33' 56" W, 2659.44 FEET TO THE NORTHWEST CORNER AND A BEARING AND DISTANCE OF S 89°59'59" E, 2657.16 FEET TO THE NORTHWEST CORNER. NO TIES RECORDED.

APRIL 28, 2009- BENJAMIN C. O'MALLEY PERFORMED A SURVEY IN SECTION 11. I FOUND AN IRON MONUMENT AT THE CENTERLINE OF A TOWNSHIP ROAD. THE MONUMENT VERIFIES ROY MARIHARTS DIMENSIONS. THE MONUMENT IS 10 FEET NORTH OF A STRAIGHT LINE. NEW TIES WERE MADE.

Doc# 248089 Fee: \$0.00 2 Pages

Office of County Recorder
Yellow Medicine County, Minnesota
I hereby certify that the within instrument
was filed on May 7, 2009 at 9:35 AM

Kay Zempel, Yellow Medicine County Recorder

By  Deputy

N/c

O'Malley & Boe Land Surveyors, Inc.
328 SW 3rd St.
Willmar, MN 56201

CERTIFICATE OF LOCATION OF GOVERNMENT CORNER

.....W 1/4.....Corner of Section.....11.....,Township.....116N.....,Range.....41 W 5th P.M.

STATE OF MINNESOTA, County of.....YELLOW MEDICINE

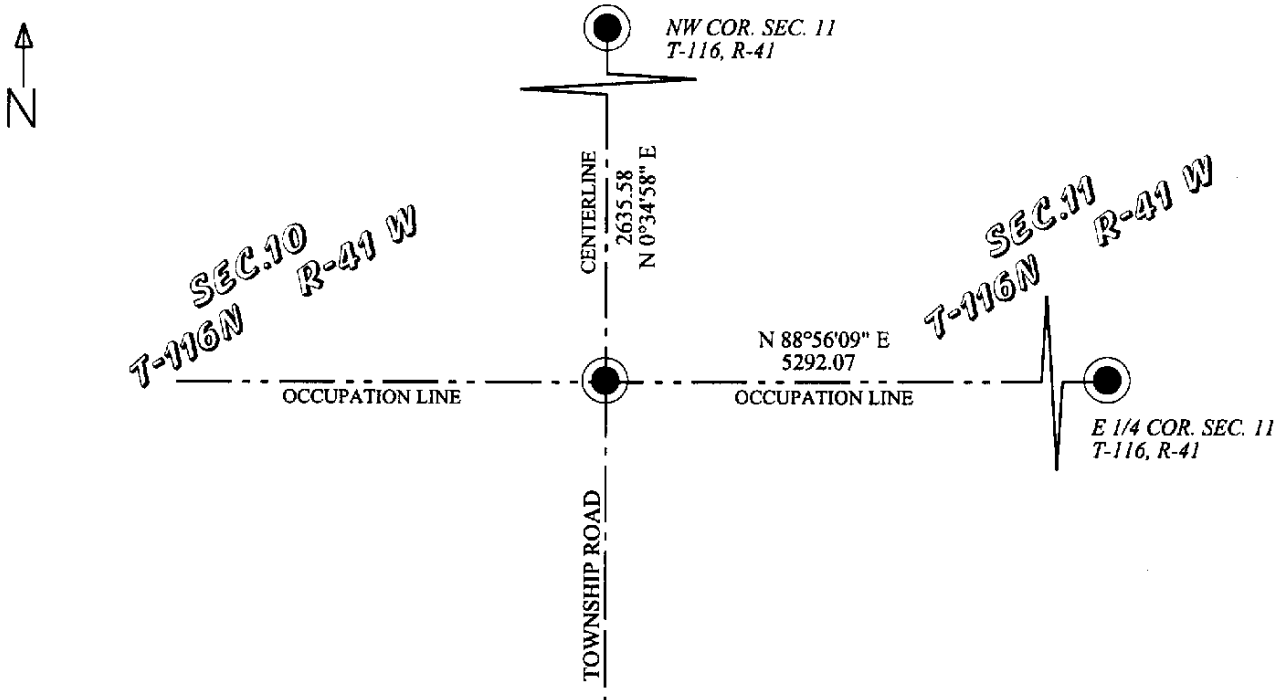
At the corner location shown on the sketch

On.....4-28-09.....found a.....IRON MONUMENT.....
Date

left monument as found, lowered monument removed monument(explain)

On.....placed a.....
Date

SKETCH OF REFERENCE TIES



Statement of evidence relative to this corner location is on back of page.

I hereby certify that this document and the data contained herein was prepared by me or under my direct supervision.

[Signature]
Signature Date 5-5-09

Registration No.42300.....

Land Surveyor, County Surveyor,
 Professional Engineer County Engineer.

OFFICE OF THE COUNTY RECORDER

County of

I hereby certify that this document was filed in the County Recorders office at.....M. on theday of.....A.D., 20....

County Recorder.....

By Deputy

DOCUMENT NO.

STATEMENT OF EVIDENCE:

WEST QUARTER CORNER OF SECTION 11, TOWNSHIP 116 N, RANGE 41 W, YELLOW MEDICINE COUNTY, MINNESOTA

MAY 12 1892 - JONAH PETERMAN (COUNTY SURVEYOR) MADE A RETRACEMENT SURVEY OF SECTION 11, TOWNSHIP 116N, RANGE 41W. HE REPORTS ALL SECTION CORNERS AND QUARTER SECTION CORNERS FOUND, EXCEPT THE WEST QUARTER CORNER. HE NOTES THE HE SET THE CORNER AT A STRAIGHT LINE AND BETWEEN THE NORTHWEST CORNER AND THE SOUTH WEST CORNER. HE SHOWS A DISTANCE OF 39.91 CHAINS TO THE NORTHWEST CORNER.

JUNE 14, 1996 BYRON DAHLE PERFORMED A SURVEY IN SECTION 11. HE SET AN IRON MONUMENT AT THE CENTER LINE OF THE TOWNSHIP ROAD AND OCCUPATIONS LINES TO THE EAST AND WEST. HE SHOWS A BEARING AND DISTANCE OF N 0°34'03" W, 2635.58 FEET TO THE NORTHWEST CORNER. TIES MADE BUT NOT RECORDED.

DECEMBER 3, 2007 ROY A. MARIHART PERFORMED A SURVEY OF SECTION 11. HIS SURVEY SHOWS FOUND IRON MONUMENTS AT ALL CORNERS. HE SHOWS A BEARING AND DISTANCE OF N 00°29'29" E, 2653.40 FEET TO THE NORTHWEST CORNER. NO TIES RECORDED.

APRIL 28, 2009- BENJAMIN C. O'MALLEY PERFORMED A SURVEY IN SECTION 11. I FOUND AN IRON MONUMENT AT THE CENTERLINE OF THE TOWNSHIP ROAD AND OCCUPATION LINES EAST AND WEST THAT VERIFIED BYRON DAHLE'S DISTANCE TO THE NORTHWEST CORNER. MADE NEW TIES.

Doc# 248088 Fee: \$0.00 2 Pages
Office of County Recorder
Yellow Medicine County, Minnesota
I hereby certify that the within instrument
was filed on May 7, 2009 at 9:30 AM

N/C
O'Malley & Boe Land Surveyors, Inc.
328 SW 3rd St.
Willmar, MN 56201

Kay Zempel, Yellow Medicine County Recorder
Heidi Bakkelund Deputy

CERTIFICATE OF LOCATION OF GOVERNMENT CORNER

.....S1/4.....Corner of Section.....11.....Township.....116N.....Range.41W 5thP.M.

STATE OF MINNESOTA, County of...YELLOW MEDICINE

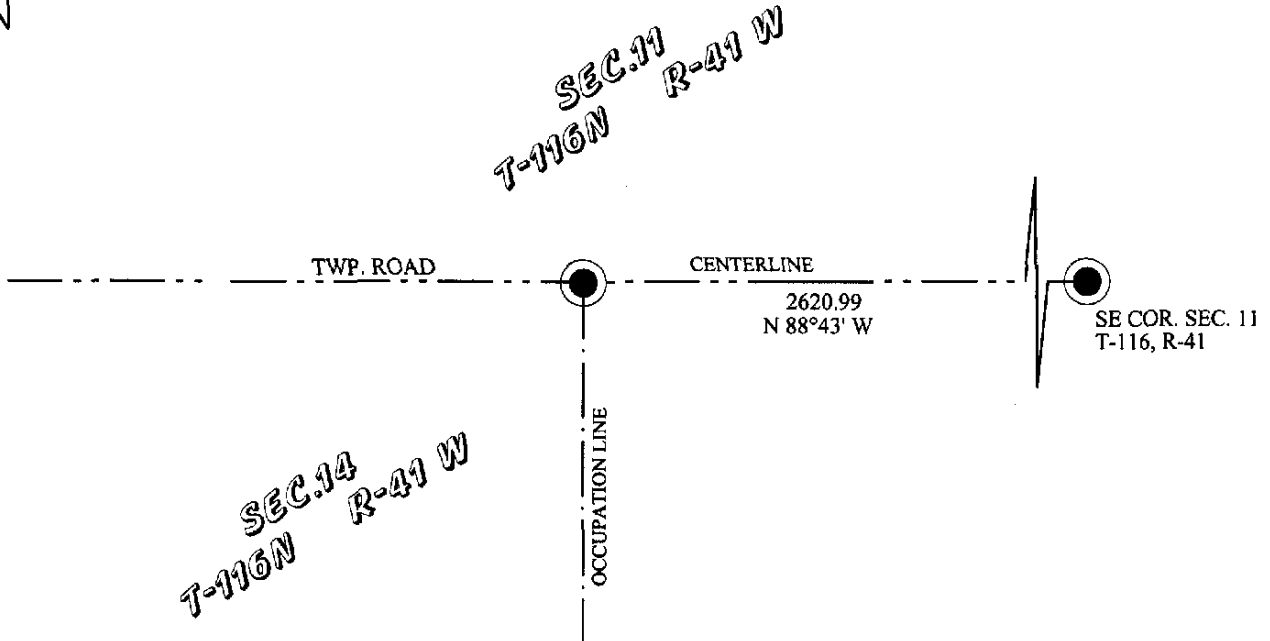
At the corner location shown on the sketch

On.....4-28-09.....found a.....IRON MONUMENT.....
Date

left monument as found, lowered monument removed monument(explain)

On.....placed a.....
Date

SKETCH OF REFERENCE TIES



Statement of evidence relative to this corner location is on back of page.

I hereby certify that this document and the data contained herein was prepared by me or under my direct supervision.

B. McKey 5-5-09
Signature Date

Registration No.42300.....

Land Surveyor, County Surveyor,
 Professional Engineer County Engineer.

OFFICE OF THE COUNTY RECORDER

County of

I hereby certify that this document was filed in the County Recorders office at.....M. on theday of.....A.D., 20....

County Recorder.....

By, Deputy

DOCUMENT NO.

STATEMENT OF EVIDENCE:

SOUTH QUARTER CORNER OF SECTION 11, TOWNSHIP 116 N, RANGE 41 W, YELLOW MEDICINE COUNTY, MINNESOTA

MAY 12 1892 - JONAH PETERMAN (COUNTY SURVEYOR) MADE A RETRACEMENT SURVEY OF SECTION 11, TOWNSHIP 116N, RANGE 41W. HE REPORTS ALL SECTION CORNERS AND QUARTER SECTION CORNERS FOUND, EXCEPT THE WEST QUARTER CORNER. HE SHOWS A DISTANCE OF 39.90 CHAINS TO THE SOUTHEAST CORNER.

JUNE 14, 1996 BYRON DAHLE PERFORMED A SURVEY IN SECTION 11. HE SET AN IRON MONUMENT AT THE CENTERLINE OF A TOWNSHIP ROAD, AND A USE LINE TO THE SOUTH. HIS TIE SHOWS A USE LINE TO THE NORTH 5 FEET TO THE EAST OF THE CORNER HE SHOWS A BEARING AND DISTANCE OF N 88°43' E, 2620.99 FEET TO THE SOUTHEAST CORNER. TIES MADE BUT NOT RECORDED.

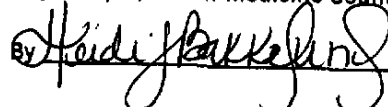
DECEMBER 3, 2007 ROY A. MARIHART PERFORMED A SURVEY OF SECTION 11. HIS SURVEY SHOWS FOUND IRON MONUMENTS AT ALL CORNERS. HE SHOWS A BEARING AND DISTANCE OF N 89°47'07" E, 2621.04 FEET TO THE SOUTHEAST CORNER. NO TIES RECORDED.

APRIL 28, 2009- BENJAMIN C. O'MALLEY PERFORMED A SURVEY IN SECTION 11. I FOUND AN IRON MONUMENT AT THE CENTERLINE OF A TOWNSHIP ROAD AND USE LINE TO THE SOUTH. THE MONUMENT VERIFIES BYRON DAHLES DIMENSIONS. NEW TIES WERE MADE.

Doc# 248087 Fee: \$0.00 2 Pages

Office of County Recorder
Yellow Medicine County, Minnesota
I hereby certify that the within instrument
was filed on May 7, 2009 at 9:25 AM

Kay Zempel, Yellow Medicine County Recorder

By  Deputy

N/C
O'Malley & Boe Land Surveyors, Inc.
328 SW 3rd St.
Willmar, MN 56201

STATEMENT OF EVIDENCE:

SOUTHEAST CORNER OF SECTION 11, TOWNSHIP 116 N, RANGE 41 W, YELLOW MEDICINE COUNTY, MINNESOTA

MAY 12 1892 - JONAH PETERMAN (COUNTY SURVEYOR) MADE A RETRACEMENT SURVEY OF SECTION 11, TOWNSHIP 116N, RANGE 41W. HE REPORTS ALL SECTION CORNERS AND QUARTER SECTION CORNERS FOUND, EXCEPT THE WEST QUARTER CORNER. HE SHOWS A DISTANCE OF 80.98 CHAINS TO THE NORTHEAST CORNER AND 39.90 TO THE SOUTH QUARTER CORNER. NO TIES WERE RECORDED.

1974 COUNTY ENGINEERS PLANS FOR COUNTY ROAD NO. 8 SHOWS A MONUMENT AT THE SOUTHEAST CORNER OF SECTION 11 AND THE NORTHEAST CORNER OF SECTION 11. STATIONING SHOWS A DISTANCE OF 5346.90 FEET BETWEEN CORNERS. TIES SHOWN ON PLANS

JUNE 14, 1996 BYRON DAHLE PERFORMED A SURVEY IN SECTION 11. HE SHOWS A FOUND IRON AT THE CENTERLINE INTERSECTION OF COUNTY ROAD 8 AND THE TOWNSHIP ROAD. HE SHOWS A BEARING AND DISTANCE OF S 88°43' W, 2620.99 FEET TO THE SOUTH QUARTER CORNER WHICH HE SET AT CENTERLINE OF TOWNSHIP ROAD AND OCCUPATION LINE TO THE SOUTH. HE SHOWS A BEARING AND DISTANCE OF N 0°01'48" W, 5347.64 FEET TO AN IRON MONUMENT THAT HE FOUND AT THE NORTHEAST CORNER OF SECTION 11. TIES MADE BUT NOT RECORDED.

DECEMBER 3, 2007 ROY A. MARIHART PERFORMED A SURVEY OF SECTION 11. HIS SURVEY SHOWS FOUND IRON MONUMENTS AT ALL CORNERS. HE SHOWS A BEARING AND DISTANCE OF S 89°47'07" W, 2621.04 FEET FROM THE SOUTHEAST CORNER OF SECTION 11 TO THE SOUTH QUARTER CORNER OF SECTION 11. AND A BEARING AND DISTANCE OF N 01°01'50" E, 5347.23 FEET. NO TIES RECORDED.

APRIL 28, 2009- BENJAMIN C. O'MALLEY PERFORMED A SURVEY IN SECTION 11. I FOUND A P.K. NAIL AT THE CENTERLINE INTERSECTION OF COUNTY ROAD 8 AND A TOWNSHIP ROAD. I FOUND BYRON DAHLE'S IRON MONUMENT AT THE SOUTH QUARTER CORNER WHICH VERIFIED HIS MEASUREMENTS. I FOUND AN IRON MONUMENT AT THE NORTHEAST CORNER THAT VERIFIED HIS MEASUREMENTS. NEW TIES WERE MADE.

Doc# 248086 Fee: \$0.00 2 Pages

Office of County Recorder
Yellow Medicine County, Minnesota
I hereby certify that the within instrument
was filed on May 7, 2009 at 9:20 AM

Kay Zempel, Yellow Medicine County Recorder

Heidi Buckelung Deputy

N/O

O'Malley & Boe Land Surveyors, Inc.
328 SW 3rd St.
Willmar, MN 56201

STATEMENT OF EVIDENCE:

EAST QUARTER CORNER OF SECTION 11, TOWNSHIP 116 N, RANGE 41 W, YELLOW MEDICINE COUNTY, MINNESOTA

MAY 12 1892 - JONAH PETERMAN (COUNTY SURVEYOR) MADE A RETRACEMENT SURVEY OF SECTION 11, TOWNSHIP 116N, RANGE 41W. HE REPORTS ALL SECTION CORNERS AND QUARTER SECTION CORNERS FOUND, EXCEPT THE WEST QUARTER CORNER. HE SHOWS A DISTANCE OF 40.22 CHAINS TO THE NORTHEAST CORNER AND 40.76 CHAINS TO THE SOUTHEAST CORNER. NO TIES WERE RECORDED.

1974 COUNTY ENGINEERS PLANS FOR COUNTY ROAD NO. 8 SHOWS A MONUMENT AT THE SOUTHEAST CORNER OF SECTION 11 AND THE NORTHEAST CORNER OF SECTION 11. STATIONING SHOWS A DISTANCE OF 5346.90 FEET BETWEEN CORNERS. TIES SHOWN ON PLANS

JUNE 14, 1996 BYRON DAHLE PERFORMED A SURVEY IN SECTION 11. HE SHOWS A FOUND IRON MONUMENT AT THE SOUTHEAST CORNER AND A FOUND IRON MONUMENT AT THE NORTHEAST CORNER. HE SET A RAIL ROAD SPIKE AT LOST POSITION ON A STRAIGHT LINE AND SPLIT. HE SHOWS A BEARING AND DISTANCE OF N 0°01'47" W, 2673.82 FEET TO THE NORTHEAST CORNER AND A BEARING AND DISTANCE OF S 0°01'47" E, 2673.82 FEET TO THE SOUTHEAST CORNER. TIES MADE BUT NOT RECORDED.

DECEMBER 3, 2007 ROY A. MARIHART PERFORMED A SURVEY OF SECTION 11. HIS SURVEY SHOWS FOUND IRON MONUMENTS AT ALL CORNERS. HE SHOWS A BEARING AND DISTANCE OF N 01°01'48" E, 2673.60 FEET TO THE NORTHEAST CORNER AND A BEARING AND DISTANCE OF S 01°01'54" W, 2673.63 FEET TO THE SOUTHEAST CORNER. NO TIES RECORDED.

APRIL 28, 2009- BENJAMIN C. O'MALLEY PERFORMED A SURVEY IN SECTION 11. I FOUND A RAIL ROAD SPIKE AT THE CENTERLINE OF COUNTY ROAD 8 THAT VERIFIED BYRON DAHLE'S DISTANCE TO THE NORTHEAST CORNER AND THE SOUTHEAST CORNER. IT IS MY OPINION THAT THE ORIGINAL CORNER LOCATION IS NOT LOST AND SHOULD BE PLACED AT A PRORATED POSITION USING THE DIMENSIONS FROM THE SURVEY PERFORMED BY JONAH PETERMAN (COUNTY SURVEYOR) IN 1892. I SET A P.K. NAIL AT THIS POSITION AND MADE NEW TIES.

Doc# 248085 Fee: \$0.00 2 Pages

Office of County Recorder
Yellow Medicine County, Minnesota
I hereby certify that the within instrument
was filed on May 7, 2009 at 9:15 AM

Kay Zempel, Yellow Medicine County Recorder

Heidi Bakkelung Deputy

N/c

O'Malley & Boe Land Surveyors, Inc.
328 SW 3rd St.
Willmar, MN 56201

STATEMENT OF EVIDENCE:

NORTHEAST CORNER OF SECTION 11, TOWNSHIP 116 N, RANGE 41 W, YELLOW MEDICINE COUNTY, MINNESOTA

MAY 12 1892 - JONAH PETERMAN (COUNTY SURVEYOR) MADE A RETRACEMENT SURVEY OF SECTION 11, TOWNSHIP 116N, RANGE 41W. HE REPORTS ALL SECTION CORNERS AND QUARTER SECTION CORNERS FOUND, EXCEPT THE WEST QUARTER CORNER. HE SHOWS A DISTANCE OF 80.98 CHAINS TO THE SOUTHEAST CORNER AND 80.56 CHAINS TO THE NORTHWEST CORNER. NO TIES WERE RECORDED.

1974 COUNTY ENGINEERS PLANS FOR COUNTY ROAD NO. 8 SHOWS A MONUMENT AT THE SOUTHEAST CORNER OF SECTION 11 AND THE NORTHEAST CORNER OF SECTION 11. STATIONING SHOWS A DISTANCE OF 5346.90 FEET BETWEEN CORNERS. TIES SHOWN ON PLANS

JUNE 14, 1996 BYRON DAHLE PERFORMED A SURVEY IN SECTION 11. HE SHOWS A FOUND IRON AT THE CENTERLINE INTERSECTION OF COUNTY ROAD 8 AND THE TOWNSHIP ROAD. HE SHOWS A BEARING AND DISTANCE OF S 0°01'47" E, 5347.64 FEET TO THE SOUTHEAST CORNER AND A BEARING AND DISTANCE OF S 88°43' 11" W, 5317.20 FEET TO A FOUND IRON MONUMENT AT THE NORTHWEST CORNER. TIES MADE BUT NOT RECORDED.

DECEMBER 3, 2007 ROY A. MARIHART PERFORMED A SURVEY OF SECTION 11. HIS SURVEY SHOWS FOUND IRON MONUMENTS AT ALL CORNERS. HE SHOWS A BEARING AND DISTANCE OF S 01°01'50" W, 5347.23 FEET TO THE SOUTHEAST CORNER AND A BEARING AND DISTANCE OF S 89°46'58" W, 5316.56 FEET TO THE NORTHWEST CORNER. NO TIES RECORDED.

APRIL 28, 2009- BENJAMIN C. O'MALLEY PERFORMED A SURVEY IN SECTION 11. I FOUND AN IRON MONUMENT AT THE CENTERLINE INTERSECTION OF COUNTY ROAD 8 AND A TOWNSHIP ROAD. THE MONUMENT VERIFIES BYRON DAHLE'S DIMENSIONS. NEW TIES WERE MADE.

Doc# 248084 Fee: \$0.00 2 Pages

Office of County Recorder
Yellow Medicine County, Minnesota
I hereby certify that the within instrument
was filed on May 7, 2009 at 9:10 AM

Kay Zempel, Yellow Medicine County Recorder

Heidi Bakkefug Deputy

N/C
O'Malley & Boe Land Surveyors, Inc.
328 SW 3rd St.
Willmar, MN 56201