

# CERTIFICATE OF LOCATION OF GOVERNMENT CORNER

N.W. Corner of  
Government Lot 2 \_\_\_\_\_ of Section 19, Township 117 N, Range 40W, 5th P.M.

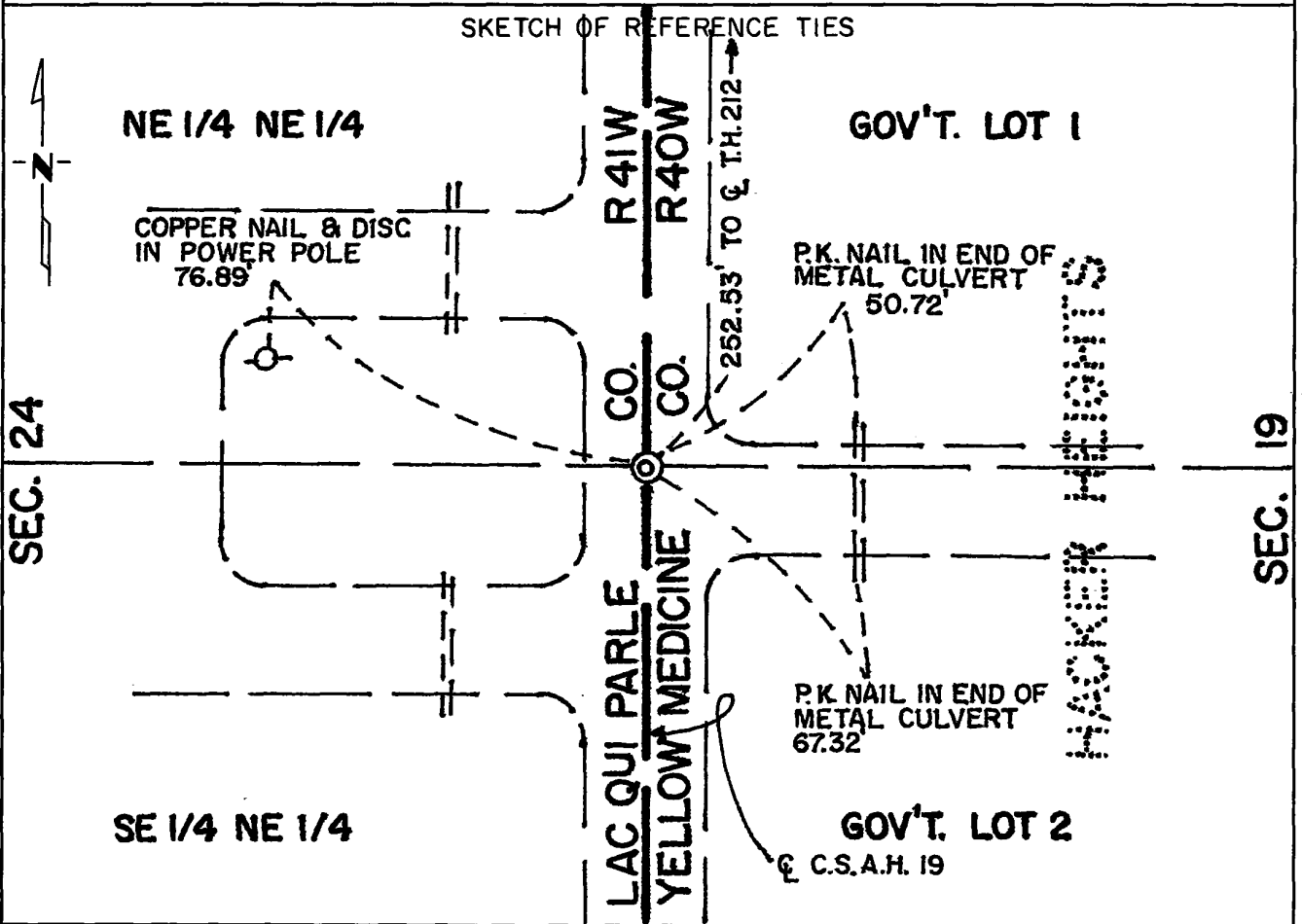
STATE OF MINNESOTA, County of Yellow Medicine

At the corner location shown on the sketch:

On Jan 12, 1982 found a nothing marking the corner  
DATE

left monument as found,  lowered monument,  removed monument (explain)

On Jan 26, 1982 placed a 3/4" diameter by 24" long iron pin at the  
DATE surface of the bituminous road



Statement of evidence relative to this corner location is on back of page.

I hereby certify that this document and the data contained herein was prepared by me or under my direct supervision.

Robert Jones 1/29/82  
SIGNATURE DATE

Registration No. 11864

Land Surveyor,  Professional Engineer

County Surveyor,  County Engineer

OFFICE OF THE COUNTY RECORDER  
County of Yellow Medicine

I hereby certify that this document was filed in the Co. Recorders office at 8:55 A.M. on the 2 day of February A.D., 19 82

County Recorder Norman J. Opdahl

By Kay Nordahl, Deputy

DOCUMENT NO. 179434

**Statement of Evidence:** Northwest Corner of Government Lot 2 of  
Section 19, T 117 N, R 40 W

- 1858- The original Public Land Survey for the township line was completed by J.W. Meyers. Nothing was set to mark this corner.
- 1895- L.R. Moyer, J. Peterman, and G. Michel, County Surveyors of Chippewa, Yellow Medicine and Lac Qui Parle Counties, resurveyed the township line. They found and remonumented the N.W. corner and west quarter corner of Sec. 19 during this survey. Nothing was set to mark this corner.
- 1947- Minnesota Highway Dept. Amended Width Order No. 17887 calls for the south line of Gov't. Lot 1 of Sec. 19 ( the north line of Gov't, Lot 2). The right of way map depicting the width order shows this corner to be 254.7' south of TH 212 centerline station 196+20. If the right of way was monumented at that time, the monuments would have been set 75' east and west of the centerline of the north/south county road and about 254.7' south of the centerline of TH 212.
- 1973- Ted Chamberlain, R.L.S. in Montevideo, filed the plat of Hacker Heights which covers portions of Govt. Lots 1 and 2 in Sec. 19. He apparently found some type of R/W monumentation in place at that time which position this corner 252.53' south of the centerline of TH 212. This position is 2.17' north of the location shown on the R/W map.
- 1976-1978- D.K. Kohanek, R.L.S. with Mn/DOT, re-established the N.W. corner of Sec. 19 and found the W 1/4 corner of Sec. 19. He did not set anything to mark this corner.
- 1982- A Mn/DOT survey crew set a 3/4" diameter by 24" long iron pin at the surface of the county road to mark this corner. It is 252.53' south of TH 212 centerline station 196+19.87 which conforms with the plat of Hacker Heights and 2.17' north of the position shown on the 1947 R/W map. It is 5.79' south of the split between the N.W. corner and the W 1/4 corner of Sec. 19.

This is accepted as the position of the northwest corner of Government Lot 2 because it nearly fits a position that has been accepted for 35 years and it fits the position shown on the plat of Hacker Heights.

For further survey information, contact the Mn/DOT Surveys Section in Willmar, Mn 56201.

# CERTIFICATE OF LOCATION OF GOVERNMENT CORNER

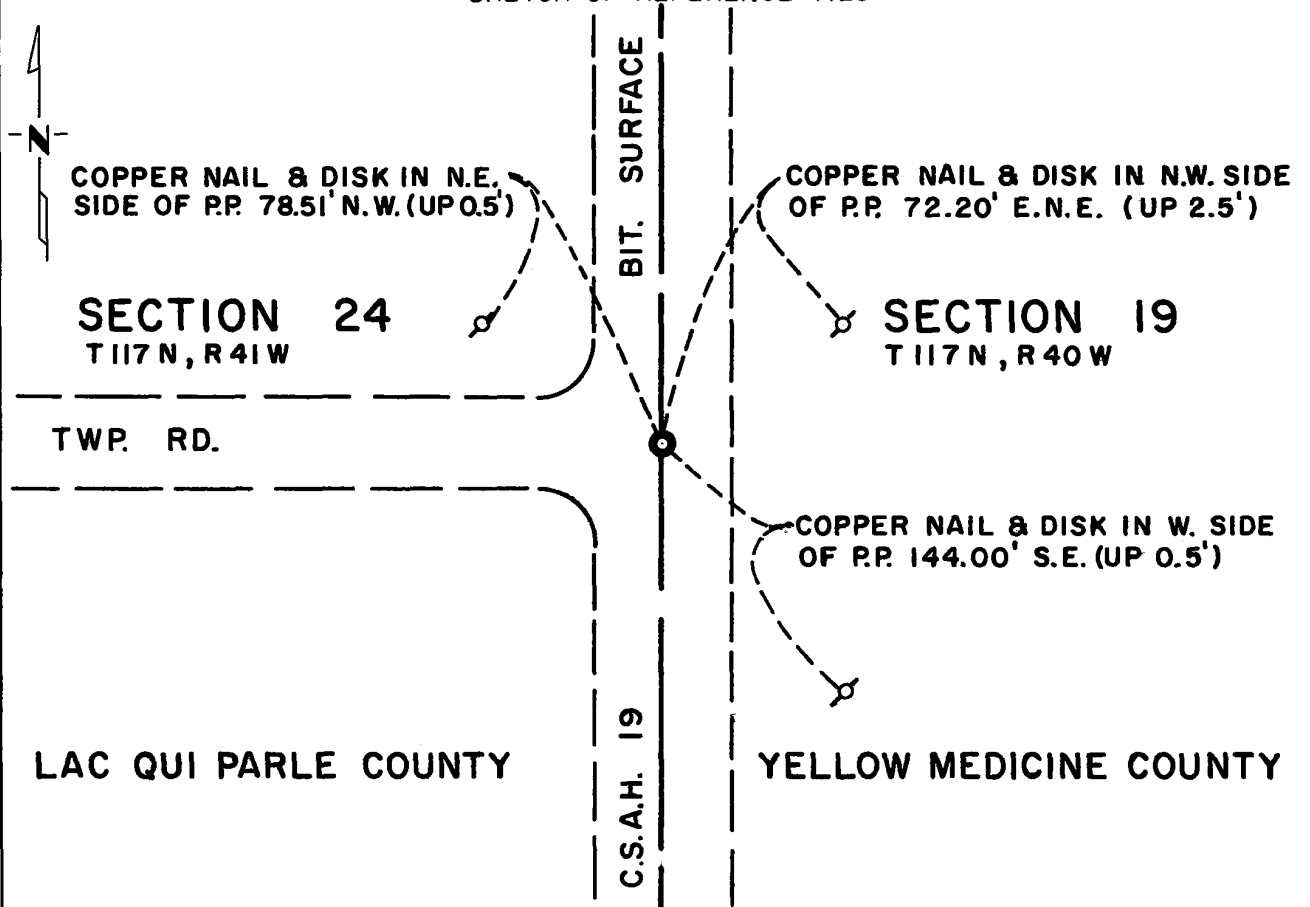
West Quarter \_\_\_\_\_ Corner of Section 19, Township 117N, Range 40W, 5th P.M.

STATE OF MINNESOTA, County of Yellow Medicine

At the corner location shown on the sketch:

- On Oct. 21, 1976 found a nail and reference ties set by county in place  
DATE  
of stone monument  
 left monument as found,  lowered monument,  removed monument (explain)
- On Oct. 21, 1976 placed a Mn/DOT Cast Iron monument in place of found nail  
DATE  
with top of C.I. monument flush with bituminous surface.

SKETCH OF REFERENCE TIES



Statement of evidence relative to this corner location is on back of page.

I hereby certify that this document and the data contained herein was prepared by me or under my direct supervision.

David K. Kohanek 11/19/80  
SIGNATURE DATE

Registration No. 12042

- Land Surveyor,  Professional Engineer
- County Surveyor,  County Engineer

OFFICE OF THE COUNTY RECORDER  
County of Yellow Medicine

I hereby certify that this document was filed in the Co. Recorders office at 2:30 P.M. on the 25 day of November A.D., 19 80

County Recorder Norman J. Opdahl

By Kay Nordahl, Deputy

DOCUMENT NO. 177225

**Statement of Evidence:** West Quarter Corner, Section 19, T117N, R40W

- 1858 - The original Public Land Survey was completed by J. W. Myers. A wood post was set above deposited charcoal in a dirt mound with trenches and pits to mark the corner.
- 1871 - Lycurgus Moyer, Chippewa County Surveyor, surveyed the east-west quarter line of Sections 22, 23 and 24, finding the quarter post for this corner and laying out a road with the center of the road on the quarter line to the old government road.
- 1877 - A township road order calls for a road to be built along the east line of Sections 24 and 25, ending at this corner.
- 1886 - C. M. Andersen re-established or re-run the range line finding the old quarter post and stone marking this corner.
- 1895 - L. R. Moyer, J. Peterman and G. Michel, County Surveyors of Chippewa, Yellow Medicine and Lac Qui Parle Counties, resurveyed the east boundary of Camp Release Township. Found this quarter corner marked by a stone claimed to be the original corner, and perpetuated the corner with a 16" X 15" X 10" stone and a witness corner.
- 1912 - Moyer found the old stone set for the quarter post some years ago. Also found a witness stone 50 links south of west.
- 1974 - The Yellow Medicine County Highway Department regarded County Road No. 19 and a stone monument was found at intersection of north, south and west road, at engineer's station 314+31.4. Five reference ties were placed for this corner. After a 2.5 foot cut at this quarter corner removing the stone, a nail was set by the county using the reference ties.
- 1975 - The Minnesota Highway Department found the nail marking the quarter corner along with two of the reference ties.
- 1976 - On October 21, 1976, a Minnesota Department of Transportation survey crew found the nail in centerline of County Road No. 19 below the bituminous surface. Removed nail and replaced with a Mn/DOT Cast Iron monument with top of cast iron monument flush with the bituminous surface.

An analysis of the record data compared to the 1976 field measurements indicates the found nail is in agreement with the past surveys providing a continuous chain of perpetuation of the original Public Land Survey corner.

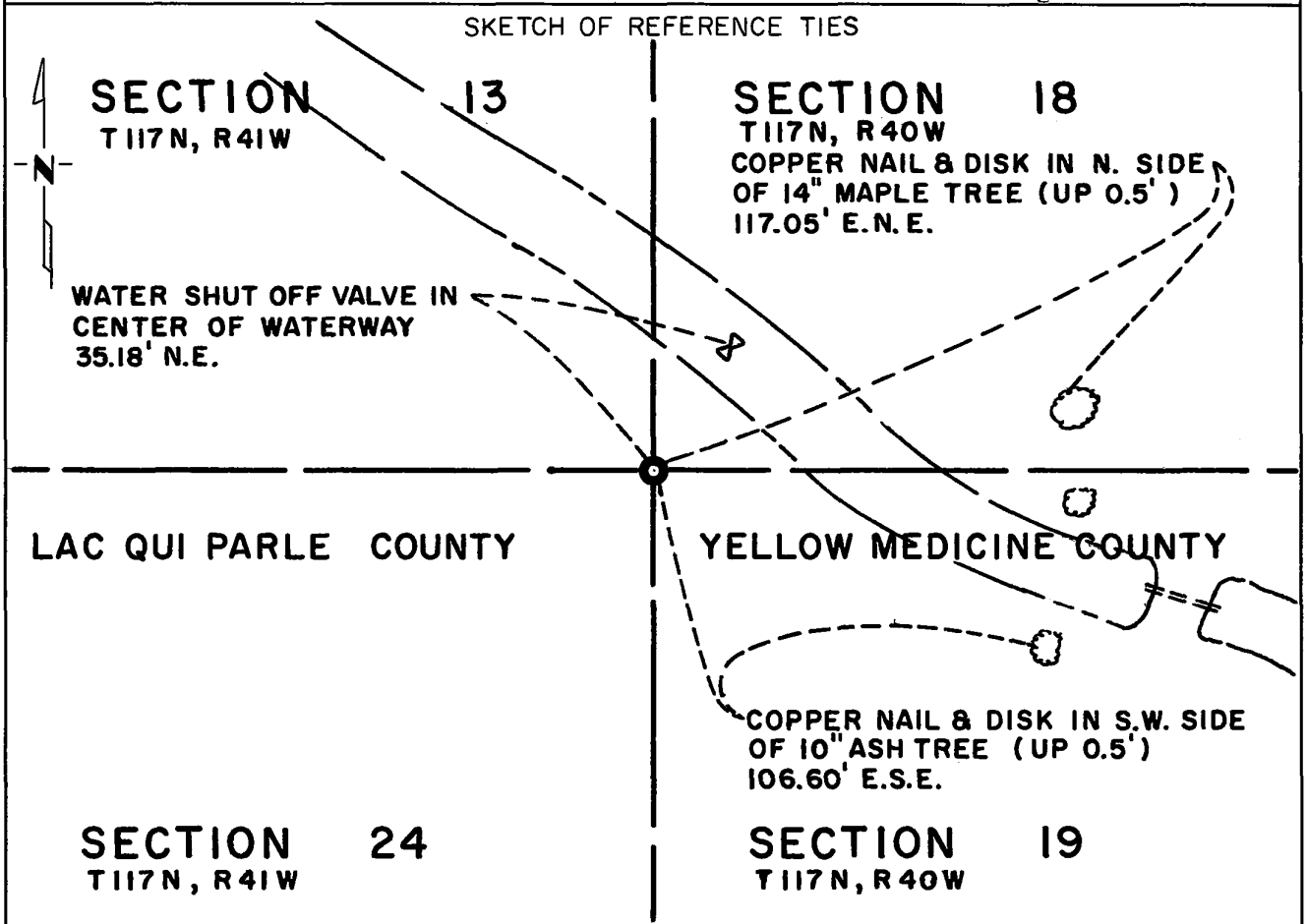
For electronic survey measurements and additional information relative to this corner, see Survey Report for S.P. 3706, T.H. 212, on file in the Surveys Section, Minnesota Department of Transportation, Willmar, Minnesota.

# CERTIFICATE OF LOCATION OF GOVERNMENT CORNER

Northwest Corner of Section 19, Township 117N, Range 40W, 5<sup>TH</sup> P.M.  
STATE OF MINNESOTA, County of Yellow Medicine

At the corner location shown on the sketch:

- On \_\_\_\_\_ found a \_\_\_\_\_  
DATE
- left monument as found,  lowered monument,  removed monument (explain)
- On June 9, 1979 placed a Mn/DOT Cast Iron Monument over 3/4 inch by  
24 inch <sup>DATE</sup> iron pin with top of C.I. Monument one inch below the ground.



Statement of evidence relative to this corner location is on back of page.

I hereby certify that this document and the data contained herein was prepared by me or under my direct supervision.

Davis K. Kohanek 11/19/80  
SIGNATURE DATE

Registration No. 12042  
 Land Surveyor,  Professional Engineer  
 County Surveyor,  County Engineer

OFFICE OF THE COUNTY RECORDER  
County of Yellow Medicine

I hereby certify that this document was filed in the Co. Recorders office at 2:25 P.M. on the 25 day of November A.D., 19 80

County Recorder Dorran J. Opdahl  
By Kay Nordahl, Deputy  
DOCUMENT NO. 177224

**Statement of Evidence:** Northeast Corner, Section 24, T117N, R41W.

- 1858 - The original Public Land Survey was completed by J. W. Myers. A wood post was set above deposited charcoal in a dirt mound with trenches and pits to mark the corner.
- 1895 - L. R. Moyer, J. Peterman, and G. Michel, County Surveyors of Chippewa, Yellow Medicine, and Lac Qui Parle Counties, resurveyed the east boundary of Camp Release Township. This section corner was found marked by a wood post in a mound. The corner was perpetuated by planting a 24" X 13" X 14" stone marked with a drill hole in top in place of the wood post.
- 1901 - Lycurgus Moyer, Chippewa County Surveyor, made a survey in Section 13 and the section corner was shown to be 39.35 chains (2597.1 feet) from the north quarter corner of Section 24.
- 1912 - Sumner Moyer found the marked stone for this section corner.
- 1921 - M. E. Chamberlin made a survey in Government Lot 2 of Section 13 but his records do not state the type of monument found for this corner.
- 1927 - The Minnesota Highway Department constructed a new road (T.H. 212) through Section 24 in Camp Release Township and Section 19 in Stony Run Township and the east line of Section 24 intersected the centerline of Trunk Highway 212 at P.O.T. 196+20, 1569.0 feet north of the east quarter corner of Section 24.
- 1932 - Trunk Highway 212 was surfaced with concrete pavement by the Minnesota Highway Department and iron pipe right-of-way monuments were placed on the section line 50 and 80 feet from the centerline.
- 1973 - In December, 1973, Theodore Chamberlain, Registered Land Surveyor, found the two right-of-way monuments north of Trunk Highway 212 that were placed on the section line in 1932. These two monuments were used for a subdivision plat in Section 19 of Stony Run Township.
- 1976 - On October 20, 1976, a Minnesota Department of Transportation survey crew found the two iron pipe right-of-way monuments placed on the section line in 1932. A straight line through these monuments to the east quarter corner of Section 24 intersects the centerline of Trunk Highway 212 at P.O.T. 196+19.87 and 1569.04 feet north of the east quarter corner. This compares to the 1927 survey.

An analysis of the record data compared to the field measurements indicates the obliterated location for this corner is at the intersection of a straight line from the northwest corner through the north quarter of Section 24 and a straight line from the east quarter corner of Section 24 through the right-of-way monuments placed in 1932. The distance from this obliterated location to the north quarter corner is 2597.46 feet compared to Moyer's 1901 distance of 2597.1 feet. The distance to the east quarter corner also compared to Moyer's 1895 distance when the original corner was found. This obliterated location is also in agreement with the 1927 Minnesota Highway Department survey and the 1973 Hacker Height's plat survey.

- 1978 - On November 6, 1978, a Minnesota Department of Transportation survey crew set a 3/4" X 24" iron pin at the obliterated location for this section corner. Searched the immediate area with a metal locator with no indication of an iron monument. Also probed the area for the stone set in 1895, but could have been removed when the golf course was constructed. On June 9, 1979, found the 3/4" X 24" iron pin, lowered iron pin and set a Mn/DOT cast iron monument over the iron pin to perpetuate this section corner for future surveys. For electronic survey measurements and additional information relative to this corner, see survey report for S.P. 3706, T.H. 212, on file in the Survey Section, Minnesota Department of Transportation, Willmar, Minn.

Doc# 259997 Fee: \$0.00 2 Pages

Property & Public Services  
Property Records Division  
Yellow Medicine County, Minnesota  
I hereby certify that the within instrument  
was filed on May 12, 2014 at 10:05 AM

Janel Timm, Yellow Medicine County Recorder

By Kelly Kueger Deputy

### CERTIFICATE OF LOCATION OF GOVERNMENT CORNER

East Quarter Corner of Section 31, Township 117, Range 40

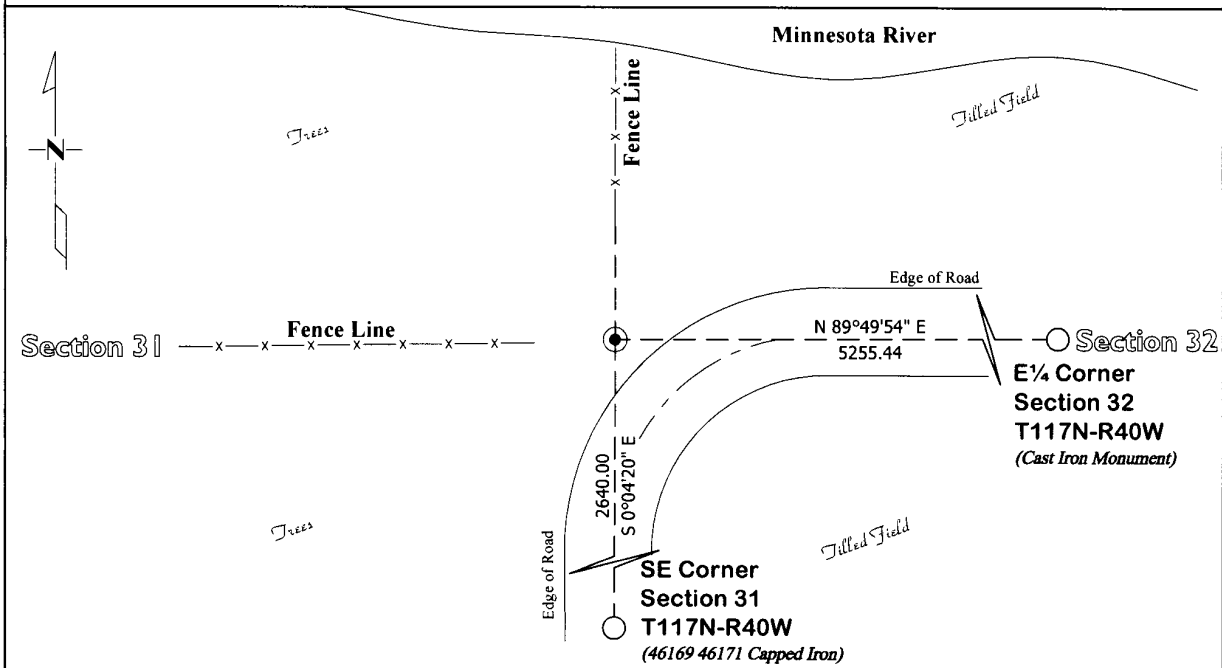
Fifth Principal Meridian, State of Minnesota, County of Yellow Medicine

At the corner location shown on the sketch:

On April 11, 2014 found a Nothing  
DATE

left monument as found       lowered monument       removed monument (explain)

On April 22, 2014 placed a Iron Rod with a "46169 46171" stamped plastic cap  
DATE



Statement of evidence for this corner location is on back of this page.

I hereby certify that this survey, plan, or report was prepared by me or under my direct supervision and that I am a duly Licensed Land Surveyor under the laws of the state of Minnesota.

Signature [Signature]  
Date 5/8/14

Typed or Printed Name: Joshua M. Stern  
Reg. No. 46169

**STATEMENT OF EVIDENCE**  
**East Quarter Corner Section 31, T117N-R40W**

---

- 1865 Davis & Webb were contracted by the United States Government Land Office to perform the Original Public Land Survey in this township. Davis & Webb record in their field notes that they "Set Post in Mound with Pits"
- 1895 Jonah Peterman, County Surveyor, records in the County Surveyor's Record Book, page 114, "Set  $\frac{1}{4}$  post" and dimensions to the Southeast corner of Section 31.
- April 22, 2014 Joshua M. Stern, LS 46169, searched a large area around this corner and found multiple Iron monuments. None of these monuments fit the land use or old survey records and did not appear to be set by surveyors. An Iron Rod with a "46169 46171" stamped plastic cap was set at a position determined using the 1865 and 1895 record survey distances from the Southeast corner of Section 31 measuring 40 chains north. The direction of the line was determined by projecting a line from the Southeast corner of Section 31 north to a historical fence located near the bottom of the bluff on the river north of this corner position. This position was verified by the center line of the road to the south, the historical fence line located north to the river, and a fence line to the west. The 1895 survey record and historical use of the land appear to be the best available evidence of this corner position. The position determined also agrees with the 1865 Original Government Land Office Survey running notes distances to the top and bottom of bluff, from this corner north to the river. No large excavation was done for this corner because it falls within the road right of way, the road surface is located near original top soil and no record of a monument has been recorded since 1895.



Doc# 259996 Fee: \$0.00 2 Pages

Property & Public Services  
Property Records Division  
Yellow Medicine County, Minnesota  
I hereby certify that the within instrument  
was filed on May 12, 2014 at 10:00 AM

**Any alterations were  
made prior to submission  
to County Recorder**

Janel Timm, Yellow Medicine County Recorder

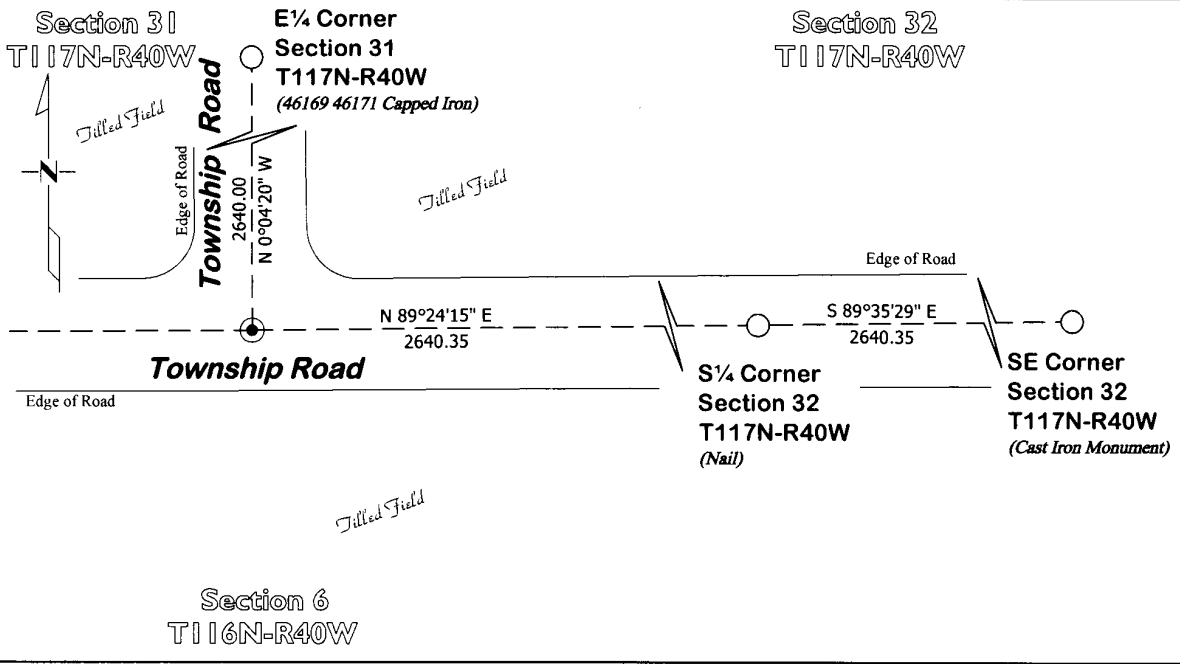
By Kelly Kanger Deputy

### CERTIFICATE OF LOCATION OF GOVERNMENT CORNER

Southeast Corner of Section 31, Township 117, Range 40  
Fifth Principal Meridian, State of Minnesota, County of Yellow Medicine

At the corner location shown on the sketch:

- On April 10, 2014 found a Nothing  
DATE
- left monument as found       lowered monument       removed monument (explain)
- On April 22, 2014 placed a Iron Rod with a "46169 46171" stamped plastic cap  
DATE



Statement of evidence for this corner location is on back of this page.

I hereby certify that this survey, plan, or report was prepared by me or under my direct supervision and that I am a duly Licensed Land Surveyor under the laws of the state of Minnesota.

Signature [Signature]  
Date 5/8/14

Typed or Printed Name: Joshua M. Stern  
Reg. No. 46169

## ***STATEMENT OF EVIDENCE***

### ***Southeast ~~Quarter~~ Corner Section 31, T117N-R40W***

- 1858 W.J. Neely was contracted by the United States Government Land Office to perform the Original Public Land Survey of the south line of this township. Neely records in his field notes that he "deposited coal made mound trench and pits"
- 1895 Jonah Peterson, County Surveyor, records in County Surveyor's Record Book, page 114, dimensions from this corner to the north and west but does not mention what type of monument was found.
- April 22, 2014 Joshua M. Stern, LS 46169, searched a large area with a metal locator and was unable to recover any monument. Section corners monuments were found at the Southeast and South Quarter corners of Section 32, along with a monument at the Southwest corner of Section 31. We computed this corner position using proportionate measurement along the south line of Section 32, between the Southeast corner and South Quarter corner of Section 32, according to the 1858 Government survey. An Iron Rod with a "46169 46171" stamped plastic cap was set at this corner position. This proportionate position was verified by the 1895 survey distances along the south line of Section 31. This computed corner position fits well with road center lines east, west, and north, along with use on Quarter and Sixteenth lines in both Sections 31&32. No large excavation was done for this corner because it falls within the road right of way and no record of a monument has been recorded since 1895.

Doc# 259995 Fee: \$0.00 2 Pages

Property & Public Services  
Property Records Division  
Yellow Medicine County, Minnesota  
I hereby certify that the within instrument  
was filed on May 12, 2014 at 9:55 AM

Janel Timm, Yellow Medicine County Recorder

By Kelly Kanger Deputy

## CERTIFICATE OF LOCATION OF GOVERNMENT CORNER

North Quarter Corner of Section 31, Township 117, Range 40

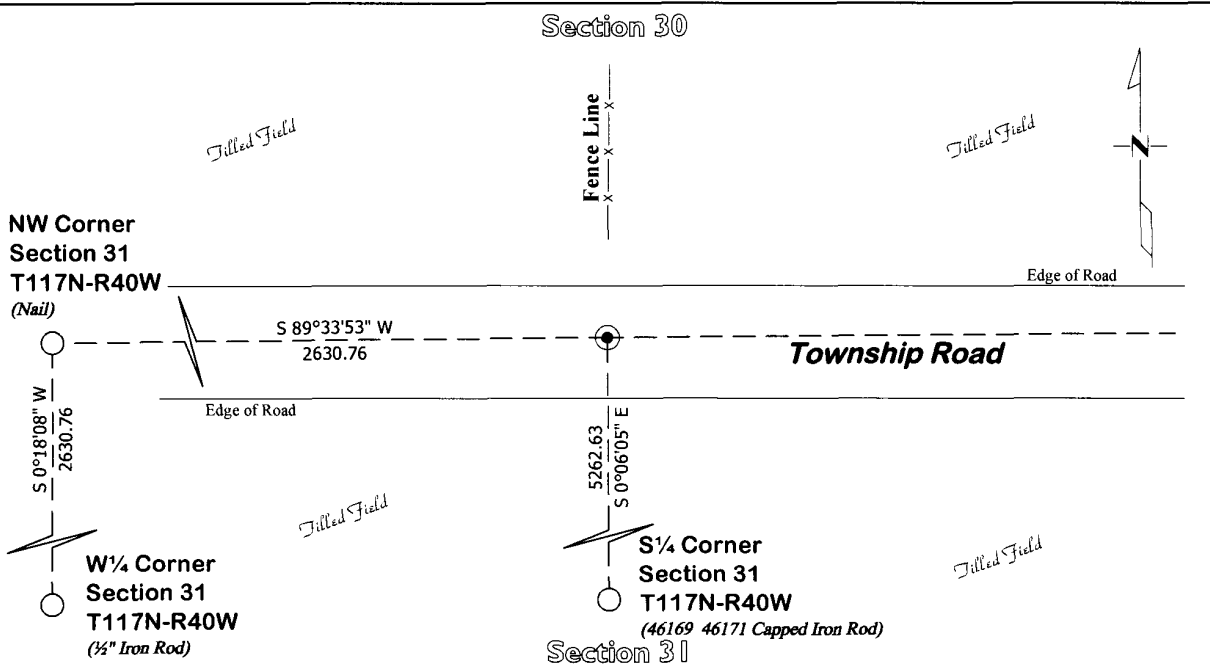
Fifth Principal Meridian, State of Minnesota, County of Yellow Medicine

At the corner location shown on the sketch:

On April 10, 2014 found a Nothing  
DATE

left monument as found       lowered monument       removed monument (explain)

On April 22, 2014 placed a Iron Rod with a "46169 46171" stamped plastic cap  
DATE



Statement of evidence for this corner location is on back of this page.

I hereby certify that this survey, plan, or report was prepared by me or under my direct supervision and that I am a duly Licensed Land Surveyor under the laws of the state of Minnesota.

Signature

[Handwritten Signature]

Typed or Printed Name:

Joshua M. Stern

Date

5/8/14

Reg. No.

46169

## ***STATEMENT OF EVIDENCE***

### ***North Quarter Corner Section 31, T117N-R40W***

- 1865 Davis & Webb were contracted by the United States Government Land Office to perform the Original Public Land Survey in this township. Davis & Webb records in their field notes that they "Set Post in Mound with Pits"
- 1895 Jonah Peterman, County Surveyor, records in the County Surveyor's Record Book, page 114, "Stone" and dimensions to the Northwest corner of this section and also the center of section.
- April 22, 2014 Joshua M. Stern, LS 46169, searched a large area with a metal locator and was unable to recover any monument. The stone called for in 1895 was most likely destroyed by road work. The current road surface appears to be at or below original top soil and the surface of the road has very little gravel. A stone was also noted at the sixteenth corner a quarter mile south of this corner. The 1/16th corner was also searched for, and was not able to be recovered. A fence is now located at the position of the 1/16<sup>th</sup> corner stone. This corner position was determined using the proportionate measurement of the 1895 survey. The direction of the north line of Section 31 was determined by projecting a line east to a historical fence near the top of bluffs as noted on the 1865 original survey (Top of Bluff). This position was verified by a fence lines that run north and south and also the road east and west. The 1895 survey record and historical use of the land appears to be the best available evidence of this corner position. An Iron Rod with a "46169 46171" stamped plastic cap was set at this corner position. No large excavation was done for this corner because it falls within the road right of way, the road surface is located at or below original top soil and no record of a monument has been recorded since 1895.



## ***STATEMENT OF EVIDENCE***

### ***South Quarter Corner Section 31, T117N-R40W***

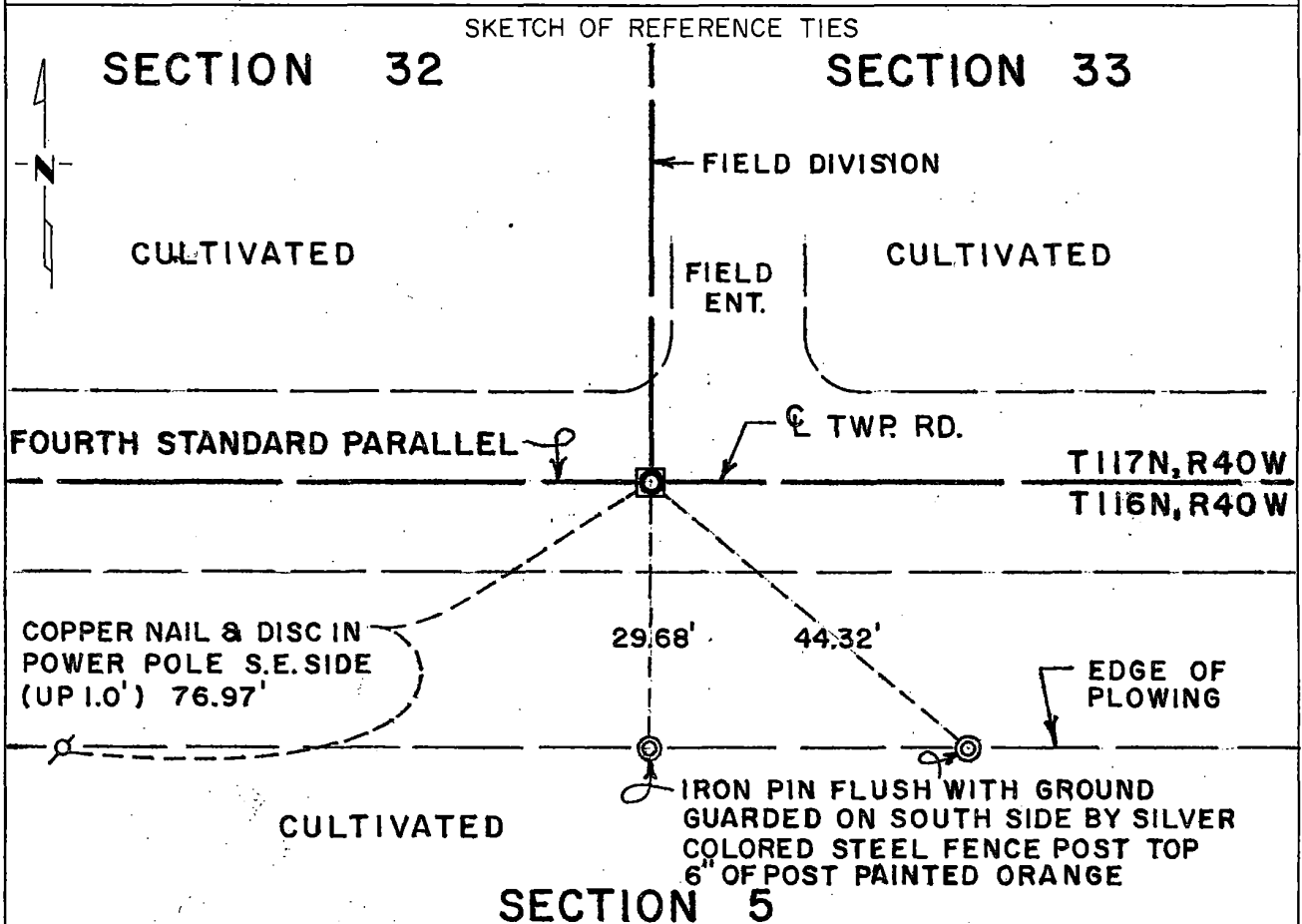
- 1858 W.J. Neely was contracted by the United States Government Land Office to perform the Original Public Land Survey of the south line of this township. Neely records in his field notes that he "Set Post deposited coal made mound trench and pits"
- 1895 Jonah Peterman, County Surveyor, records in the County Surveyor's Record Book, page 114, "Set  $\frac{1}{4}$  post" and dimensions to section corners East, West and North.
- April 22, 2014 Joshua M. Stern, LS 46169, searched a large area with a metal locator and was unable to recover any monument. An Iron Rod with a "46169 46171" stamped plastic cap was set at a position determined using a single proportionate measurement of the 1895 record distances between the Southwest and Southeast corners of this section. This position matches a fence line north and fits center line of road east and west. No large excavation was done for this corner because it falls within the road right of way and no monument has been recorded since 1895.

# CERTIFICATE OF LOCATION OF GOVERNMENT CORNER

Southeast Corner of Section 32, Township 117N, Range 40W, 5th P.M.  
STATE OF MINNESOTA, County of Yellow Medicine

At the corner location shown on the sketch:

- On Apr. 15, 1981 found a granite monument measuring 6"x 6"x 24" about 6"  
below the road surface
- left monument as found,  lowered monument,  removed monument (explain)
- On Apr. 15, 1981 placed a cast iron monument with a brass plate marked with an "X"  
about 4" below the road surface and above the granite monument.



Statement of evidence relative to this corner location is on back of page.

I hereby certify that this document and the data contained herein was prepared by me or under my direct supervision.

Robert C. Ginos 4/29/81  
SIGNATURE DATE

Registration No. 11864  
 Land Surveyor,  Professional Engineer  
 County Surveyor,  County Engineer

OFFICE OF THE COUNTY RECORDER  
County of Yellow Medicine

I hereby certify that this document was filed in the Co. Recorders office at 9:00 A.M. on the 8 day of May A.D., 19 81

County Recorder Norman A. Osdahl  
By \_\_\_\_\_, Deputy  
DOCUMENT NO. 178070

**Statement of Evidence:** Southeast Corner Section 32-117-40

- 1858 - The original Public Land Survey for the Fourth Standard Parallel was done by William J. Neely. A wood post was set in a dirt mound and trenches and pits were dug to mark the corner.
- 1901 - John Norgaard, County Surveyor, found a stake in the government mound and set a jasper stone monument (measuring 6"x 6"x 24") level with the ground.
- 1914 - John Norgaard found the jasper monument that he set in 1901.
- 1981 - R. C. Jones, R.L.S., and a Mn/DOT survey crew found the above described monument at the centerline of an east/west township road and in line with a north/south fence line and field division north. It was about 6" below the road surface and about 9 feet west of the centerline of a field entrance north and about 60 feet east of a north/south fence line to the south.

The found granite monument was lowered and a cast iron monument with a brass plate on top marked with an "X" was placed on top of the granite monument. The top of the cast iron monument is about 4" below the road surface and the top of the granite monument is about 24" below the road surface.

A continuous chain of evidence indicates that this is the location of the original government corner.

For further survey information regarding this corner, contact the Surveys Section, Mn/DOT, Willmar, Mn. 56201.



# CERTIFICATE OF LOCATION OF GOVERNMENT CORNER

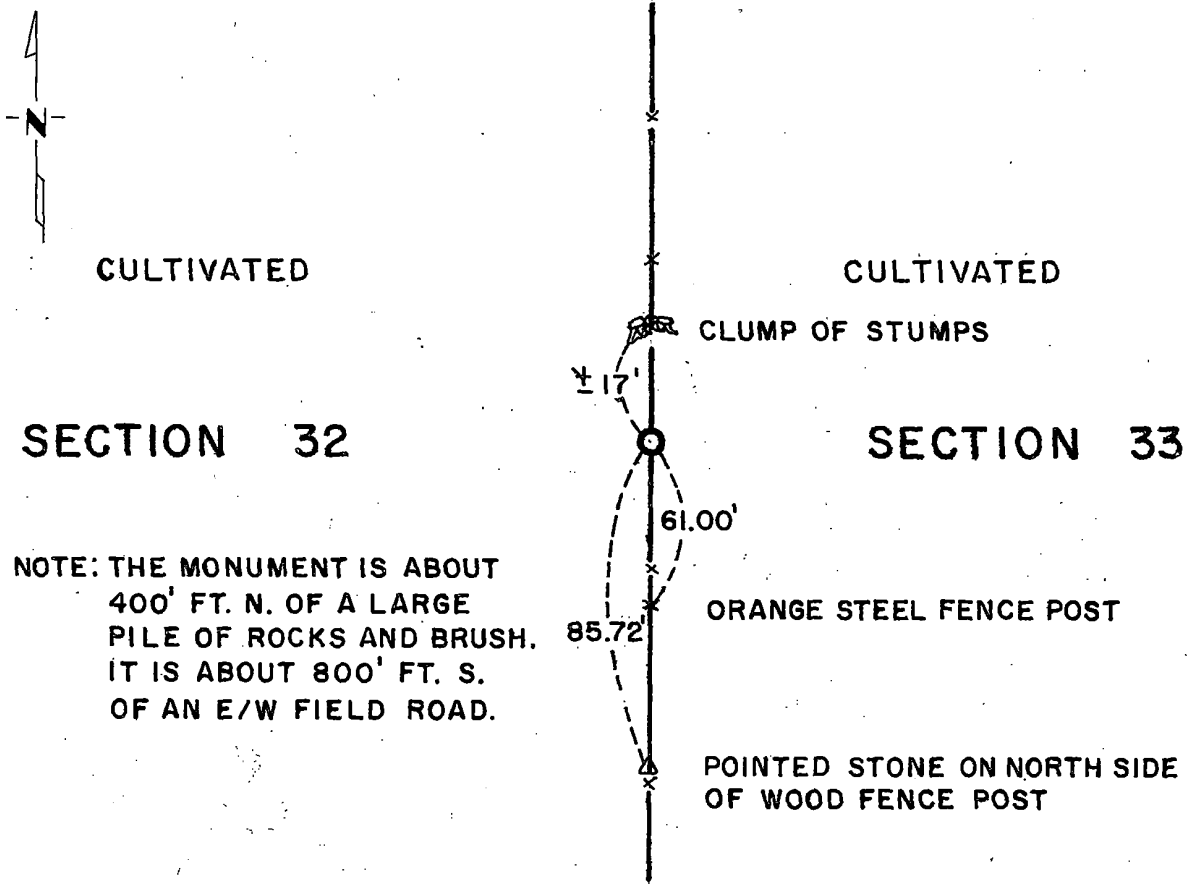
East Quarter \_\_\_\_\_ Corner of Section 32, Township 117N, Range 40W, 5th P.M.

STATE OF MINNESOTA, County of Yellow Medicine

At the corner location shown on the sketch:

- On Apr. 24, 1981 found a nothing to mark the corner  
DATE
- left monument as found,  lowered monument,  removed monument (explain)
- On Apr. 24, 1981 placed a cast iron monument so the top is 2" above ground -  
DATE  
a 3/4" x 24" iron pin was set below the monument

SKETCH OF REFERENCE TIES



NOTE: THE MONUMENT IS ABOUT  
 400' FT. N. OF A LARGE  
 PILE OF ROCKS AND BRUSH.  
 IT IS ABOUT 800' FT. S.  
 OF AN E/W FIELD ROAD.

Statement of evidence relative to this corner location is on back of page.

I hereby certify that this document and the data contained herein was prepared by me or under my direct supervision.

Robert Jones 4/29/81  
SIGNATURE DATE

Registration No. 11864

- Land Surveyor,  Professional Engineer
- County Surveyor,  County Engineer

OFFICE OF THE COUNTY RECORDER

County of Yellow Medicine

I hereby certify that this document was filed in the Co. Recorders office at 8:50 A.M. on the 8 day of May A.D., 19 81

County Recorder Norman J. Gredau

By \_\_\_\_\_, Deputy

DOCUMENT NO. 178068

**Statement of Evidence:** East Quarter Corner Section 32-117-40

- 1865 - The original Public Land Survey was made by James Watson Webb Jr. A wood post was set in a dirt mound and trenches and pits were dug to mark the corner.
- 1887 - L. R. Moyer, County Surveyor, found an old stake and set a stone to mark the corner. Moyer found the distance from the E $\frac{1}{4}$  Cor. of Sec. 32 to the E $\frac{1}{4}$  Cor. Sec. 33 to be 80.29 chains (5299.14').
- 1914 - John Norgaard, County Surveyor, found the stone marking the corner. He showed the distance from the S.E. corner of Section 32 to the E $\frac{1}{4}$  corner of Section 32 to be 2646 feet.
- 1927 - John Norgaard again found the stone and showed the same distance from the S.E. Cor. to the E $\frac{1}{4}$  Cor. He also showed the distance from the E $\frac{1}{4}$  Cor. of Sec. 32 to the E $\frac{1}{4}$  Cor. of Sec. 33 to be 5300 feet which closely agrees with Moyer's 1887 survey.
- 1981 - R. C. Jones, R.L.S., and a Mn/DOT survey crew searched an area about 4 feet wide by 20 feet long along a north/south fence line and about 2646 feet north of the S.E. Cor. of Section 32. Nothing was found to mark the corner.

The corner was set on the north/south fence line and 2646 feet north of the S.E. Cor. of Section 32 according to Norgaard's 1914 & 1927 surveys. This placed the corner 5325.22 feet west of the E $\frac{1}{4}$  Cor. of Section 33 which is 25.22 feet further than the distance shown by Norgaard and 26.08 feet further than the distance shown by Moyer. However, chainage in the east half of Sec. 33 would have been very difficult; so it is felt that a 25 foot discrepancy is not too critical. The in-place fence line has been in place for at least 40 years and is a better indication of the position of the north/south section line. There are stumps of an old tree line along this fence line, which is another indication of the section line position.

A cast iron monument was set so the top is about 2" above the ground. A  $\frac{3}{4}$ " by 24" iron pin was set under the monument. A green colored steel fence post was set on the south side of the monument and the top 2 $\frac{1}{2}$  feet was painted orange.

This location is accepted as the position of the government corner because it fits Norgaard's survey and a long standing occupation line.

For further survey information regarding this corner, contact the surveys section, Mn/DOT, Willmar, MN 56201.

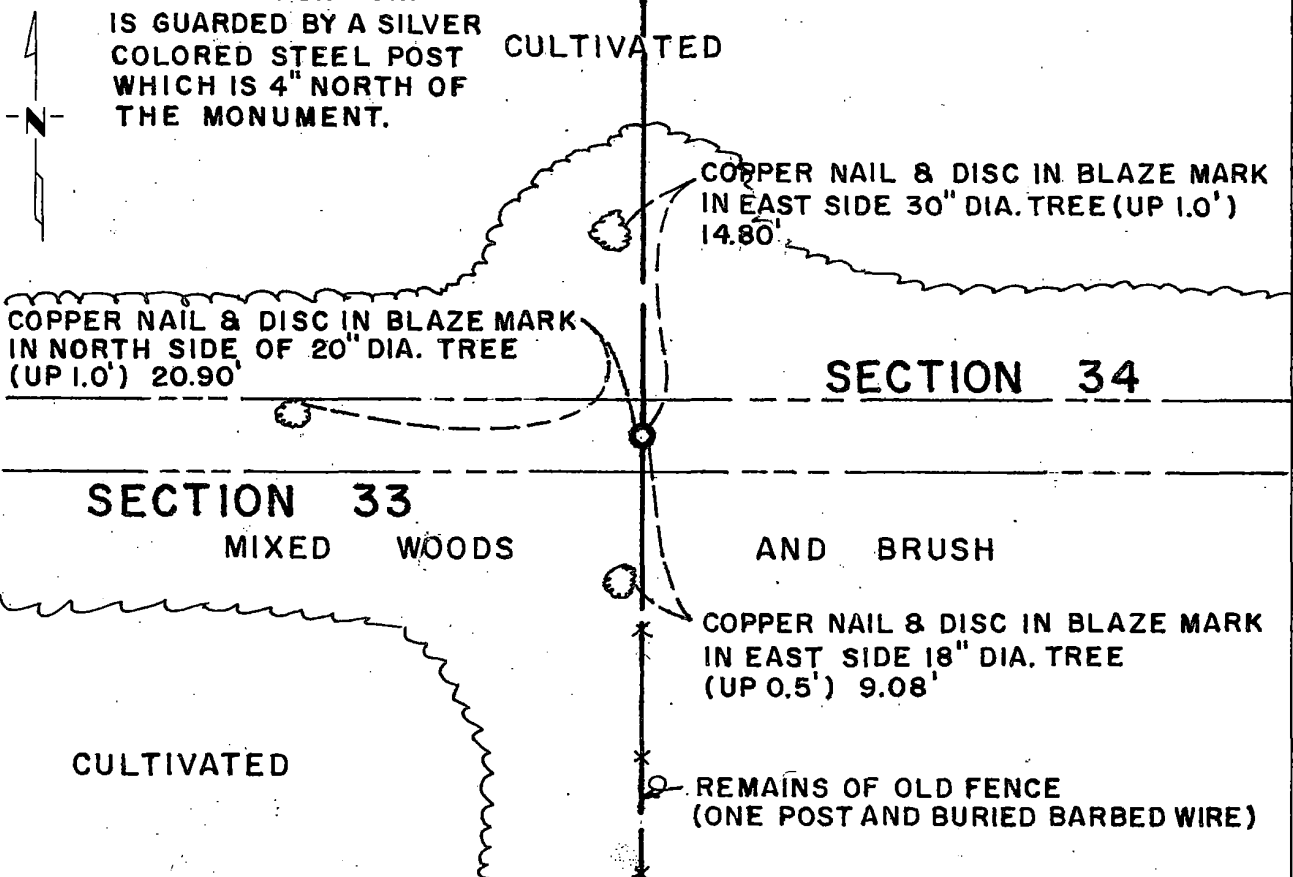
# CERTIFICATE OF LOCATION OF GOVERNMENT CORNER

East Quarter \_\_\_\_\_ Corner of Section 33, Township 117N, Range 40W, 5th P.M.  
 STATE OF MINNESOTA, County of Yellow Medicine

At the corner location shown on the sketch:

- On Apr. 16, 1981 found a nothing to mark the corner  
DATE
- left monument as found,  lowered monument,  removed monument (explain)
- On Apr. 17, 1981 placed a cast iron monument with an "X" in the brass plate flush  
DATE with the ground - a  $\frac{3}{4}$ " x 24" iron pin was set under the monument.

**NOTE: THE CAST IRON MON. IS GUARDED BY A SILVER COLORED STEEL POST WHICH IS 4" NORTH OF THE MONUMENT.** SKETCH OF REFERENCE TIES



Statement of evidence relative to this corner location is on back of page.

I hereby certify that this document and the data contained herein was prepared by me or under my direct supervision.

Robert C Jones 5/1/81  
SIGNATURE DATE

Registration No. 11864  
 Land Surveyor,  Professional Engineer  
 County Surveyor,  County Engineer

OFFICE OF THE COUNTY RECORDER  
 County of Yellow Medicine

I hereby certify that this document was filed in the Co. Recorders office at 9:10 A.M. on the 8 day of May A.D., 1981

County Recorder Thomas A. Opdebe  
 By \_\_\_\_\_, Deputy  
 DOCUMENT NO. 178072

**Statement of Evidence:** East Quarter Corner Section 33-117-40

- 1865 - The original Public Land Survey was done by James Watson Webb Jr. A wood post was set in a dirt mound and trenches and pits were dug to mark the corner.
- 1887 - L.R. Moyer, County Surveyor, found the old government post and set a 12"x 5"x 5" stone to mark the corner.
- 1910 - John Norgaard, County Surveyor, found a post in the government mound marking the corner.
- 1935 - The Minnesota Highway Department right-of-way map shows the corner to be 582.7 feet north of T.H. 212 centerline Point on Semi-Tangent Station 445+85.9. Apparently no monument was found at that time.
- 1981 - R.C. Jones, R.L.S., and a Mn/DOT survey crew searched the area on three occasions but could not find any evidence of a monument marking the corner. There is a small drainage ditch running in an east/west direction through the area where the corner should be. The top of the ditch is about 15 to 20 feet wide and it is about 3 feet deep. It appears that the monument was destroyed when the ditch was dug.

The corner was set according to the old surveys by Moyer and Norgaard. Moyer found that the angle from the south line of the section to the east line of the section was 90°. Norgaard found that the distance from the southeast corner of the section to the east quarter corner was 2648 feet. The above angle and distance was used to set the corner. This placed the corner 586.45 feet north of T.H. 212 P.O.S.T. 445+87.6, or about 4.8 feet east and 3.0 feet north of the position shown on the old right-of-way map. This position is in line with the remains of an old north/south fence to the south and in the center of an east/west drainage ditch.

A cast iron monument with a brass plate on top was set flush with the ground. The brass plate was marked with an "X". A  $\frac{3}{4}$ " diameter by 24" long iron pin was set beneath the cast iron monument so the top of the pin is about 20" below ground.

This is accepted as the location of the government corner because it fits the old surveys and occupation lines and it closely fits the position shown on the right-of-way map.

For further survey information regarding this corner, contact the Surveys Section, Mn/DOT, Willmar, Mn. 56201.

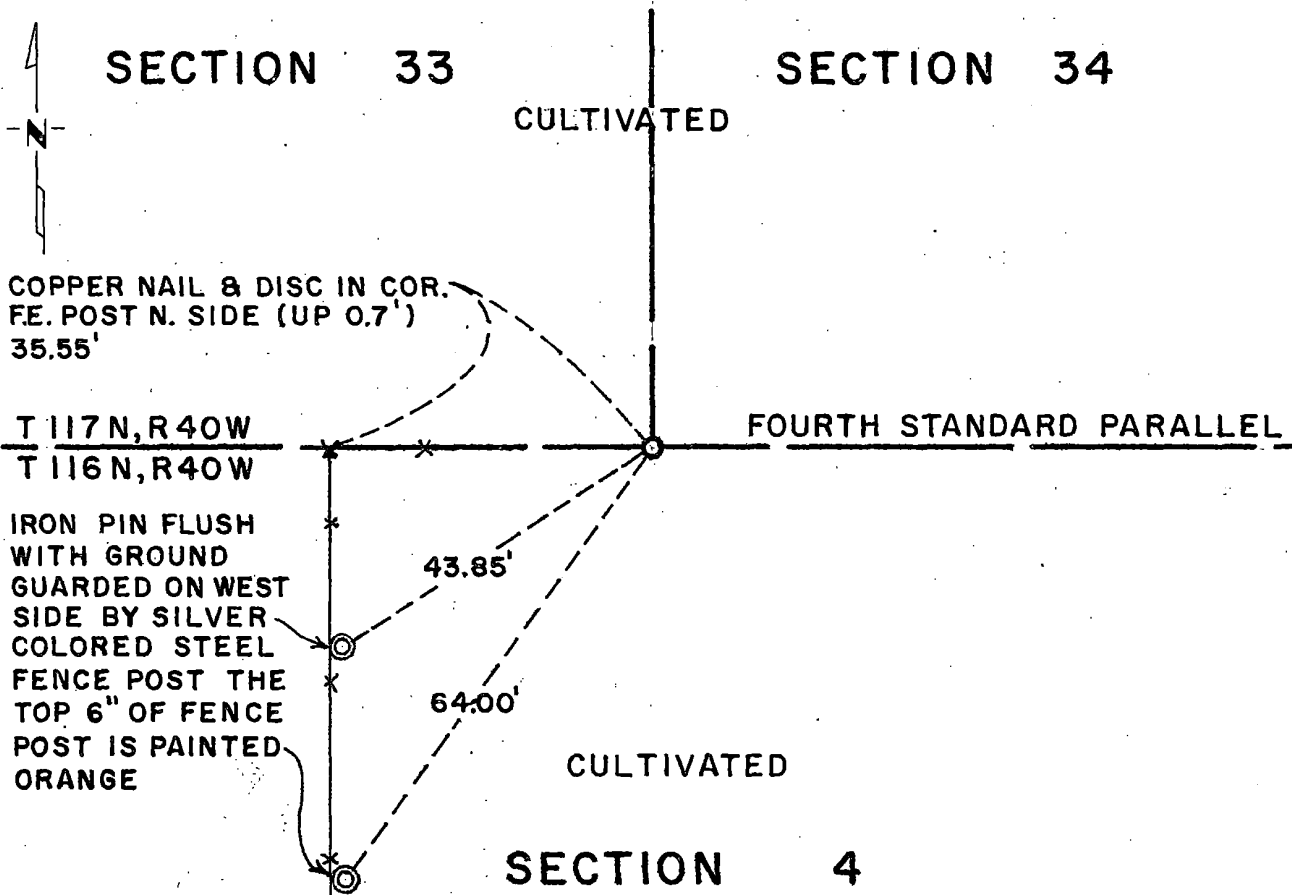
# CERTIFICATE OF LOCATION OF GOVERNMENT CORNER

Southeast Corner of Section 33, Township 117N, Range 40W, 5th P.M.  
 STATE OF MINNESOTA, County of Yellow Medicine

At the corner location shown on the sketch:

- On Apr. 16, 1981 found a nothing in place to mark the corner  
DATE
- left monument as found,  lowered monument,  removed monument (explain)
- On Apr. 17, 1981 placed a cast iron monument with brass plate on top marked with  
DATE  
an "X" flush with ground - set 3/4" x 24" iron pin below monument

SKETCH OF REFERENCE TIES



Statement of evidence relative to this corner location is on back of page.

I hereby certify that this document and the data contained herein was prepared by me or under my direct supervision.

Robert C. Jones 4/30/81  
SIGNATURE DATE

Registration No. 11864  
 Land Surveyor,  Professional Engineer  
 County Surveyor,  County Engineer

OFFICE OF THE COUNTY RECORDER  
 County of Yellow Medicine

I hereby certify that this document was filed in the Co. Recorders office at 9:05 A.M. on the 8 day of May A.D., 19 81

County Recorder \_\_\_\_\_  
 By \_\_\_\_\_, Deputy  
 DOCUMENT NO. 178071

**Statement of Evidence:** Southeast Corner Section 33-117-40

- 1858 - The original Public Land Survey for the Fourth Standard Parallel was made by William J. Neely. A wood post was set in a mound of dirt and trenches and pits were dug to mark the corner.
- 1887 - L. R. Moyer, County Surveyor, found the wood post marking the corner and set a 26"x 10"x 5" stone to mark the corner.
- 1901 - John Norgaard, County Surveyor, found a stake in the government mound and set a jasper stone monument (measuring 6"x 6"x 24") level with the ground to mark the corner.
- 1981 - R. C. Jones, R.L.S., and a Mn/DOT survey crew searched an area about 6 feet wide and 30 feet long with a tile probe, but could not find any evidence of a monument marking the corner.

The S.E. corner of Sec. 32-117-40 was found. D. K. Kohanek found the position for the N.E. corner of Sec. 4-116-40 previously. Both were tied in on the same coordinate system and it was found that the distance between these two corners is 7908.47 feet as compared to surveys by Moyer and Norgaard which indicate the distance to be 7901.62 feet or only 6.85 feet difference. The fence corner in place about 36 feet west of this corner along with an old east/west fence about  $\frac{1}{4}$  mile east indicated the north/south position of the corner. Also there is an old east/west fence from  $\frac{1}{4}$  mile to  $\frac{1}{2}$  mile west of the corner which was probably on the northerly right-of-way line of an old east/west road which was more or less along the standard parallel but was obliterated about 20 or 30 years ago. This old fence is roughly 33 feet north of the line from the S.E. corner of Section 32-117-40 to the fence corner in place about 36 feet west of the S.E. corner of Sec. 33. It is felt that this corner was destroyed when the old road was obliterated.

The corner was set by proportioning the distance shown on Moyer's and Norgaard's surveys and using the east/west fence lines and the fence corner mentioned above to control the direction from the S.E. corner of Sec. 32-117-40. This location is on a field division line and in line with the fence corner west and an east/west fence east. It also very nearly lines in with a north/south fence line about  $\frac{1}{4}$  mile north.

A cast iron monument with a brass plate on top marked with an "X" was set flush with the ground. A  $\frac{3}{4}$ " by 24" iron pin was set under the monument. The top of the pin is about 20" below ground.

This position is accepted as the location of the government corner because it fits the old Moyer - Norgaard surveys in an east/west direction and occupation lines in a north/south direction.

For further survey information regarding this corner, contact the Surveys Section, Mn/DOT, Willmar, Mn. 56201.

# CERTIFICATE OF LOCATION OF GOVERNMENT CORNER

South Quarter \_\_\_\_\_ Corner of Section 33, Township 117N, Range 40W, 5th P.M.

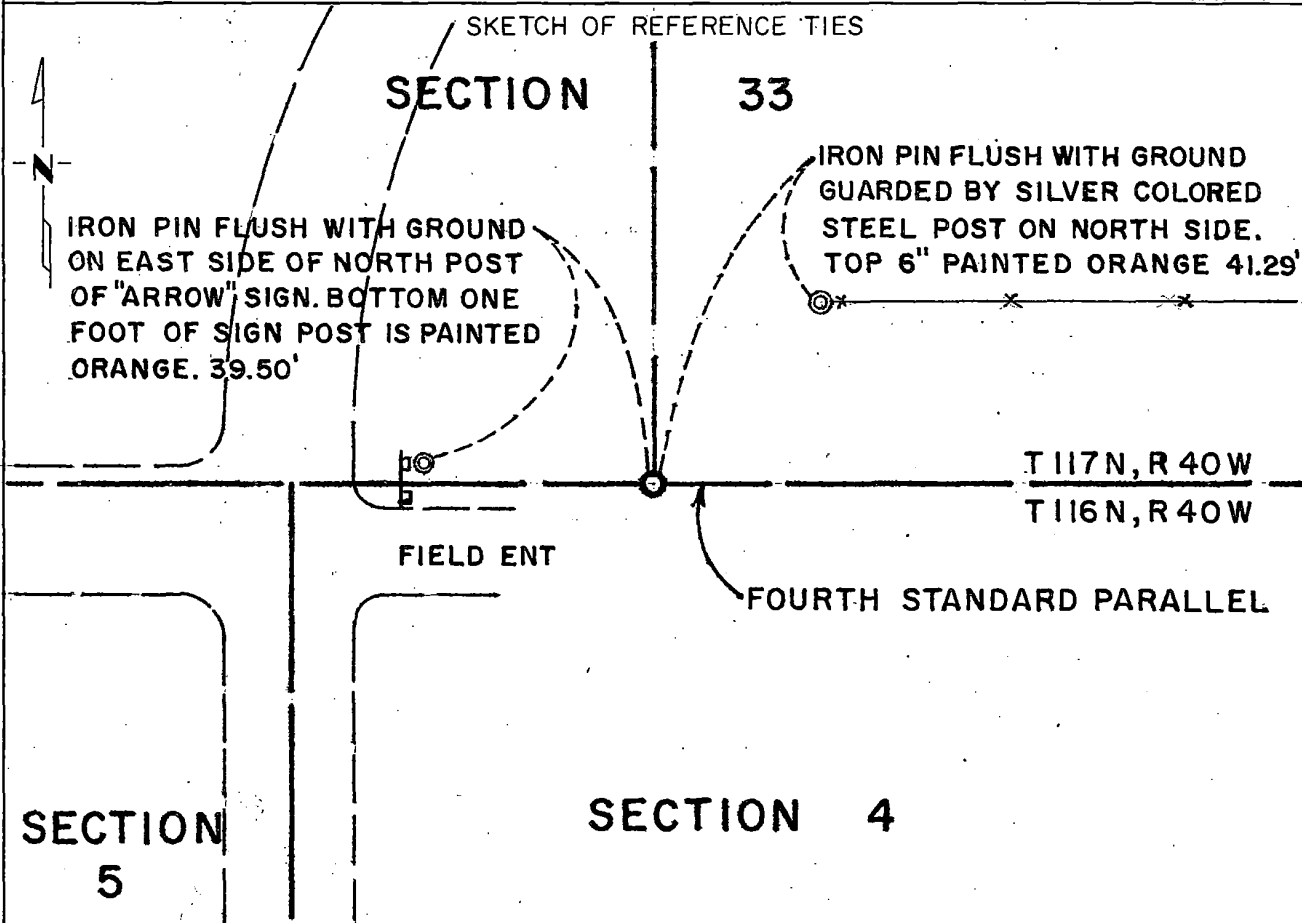
STATE OF MINNESOTA, County of Yellow Medicine

At the corner location shown on the sketch:

On Apr. 16, 1981 found a nothing in place to mark the corner  
DATE

left monument as found,  lowered monument,  removed monument (explain)

On Apr. 17, 1981 placed a cast iron monument with brass plate on top marked  
DATE  
with an "X" about 20" below ground - set a 3/4" x 24" iron pin under the monument



Statement of evidence relative to this corner location is on back of page.

I hereby certify that this document and the data contained herein was prepared by me or under my direct supervision.

Robert C Jones SIGNATURE 4/30/81 DATE

Registration No. 11864

Land Surveyor,  Professional Engineer  
 County Surveyor,  County Engineer

OFFICE OF THE COUNTY RECORDER  
County of Yellow Medicine

I hereby certify that this document was filed in the Co. Recorders office at 8:55 A. M. on the 8 day of May A.D., 19 81

County Recorder Norman Q. Opdahl

By \_\_\_\_\_, Deputy

DOCUMENT NO. 178069

**Statement of Evidence:** South Quarter Corner Section 33-117-40

- 1858 - The original Public Land Survey for the Fourth Standard Parallel was made by William J. Neely. A wood post was set in a mound of dirt and trenches and pits were dug to mark the corner.
- 1887 - L.R. Moyer, County Surveyor, either set or found a stone measuring 20"x 6"x 4" to mark the corner.
- 1927 - John Norgaard, County Surveyor, found a stone which measured 3"x 6" on top marking the corner.
- 1981 - R.C. Jones, R.L.S., and a Mn/DOT survey crew searched an area about 10 ft. x 10 ft. with a tile probe at the intersection of centerlines of an east/west road west and a north/south road north.

The S.E. corner of Sec. 32-117-40 and the N.E. corner of Sec. 4-116-40 were found. The distance between them is 7908.47 feet as compared to Moyer's and Norgaard's surveys distance of 7901.62 feet. The old survey distances were proportioned using a fence corner about  $\frac{1}{2}$  mile east as a control for direction. This placed the corner 8 feet north and 3 feet east of the intersection of the two roads and about 33 feet south of an east/west fence line extending to the east. Another 10 ft. x 10 ft. area was searched with a tile probe, but nothing was found.

Local landowners said that the east/west road used to go through this area to the N.E. corner of Sec. 4-116-40. This road was abandoned and obliterated over 20 years ago. The east/west fence that is 33 feet north of the corner appears to have been the northerly right of way line of the abandoned road.

Both locations that were probed are in plowed land and therefore it is felt that the monument was either destroyed by the plow or when the old road was obliterated.

The corner was set by the method described above which places it 8 feet north and 3 feet east of the intersection of roads and 33 feet south of the east/west fence.

A cast iron monument with a brass plate on top marked with an "X" was set so the top is 20" below ground. A  $\frac{3}{4}$ "x 24" iron pin was set below the monument so that the top of the iron pin is about 40" below ground.

This position is accepted as the location of the government corner because it fits the old Moyer-Norgaard surveys in an east/west direction and occupation lines in a north/south direction.

For further survey information regarding this corner, contact the Surveys Section, Mn/DOT, Willmar, Mn. 56201