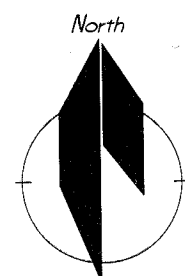


# YELLOW MEDICINE COUNTY STATE AID HIGHWAY No. 21

## RIGHT OF WAY PLAT No. 8



This Plat Located In Part of:  
**W $\frac{1}{2}$  of the NW $\frac{1}{4}$ , Section 3,**  
also in part of:  
**E $\frac{1}{2}$  of the NE $\frac{1}{4}$ , Section 4**  
all in:

**T114N-R38W, Sioux Agency Township,  
Yellow Medicine County, Minnesota**

This drawing prepared by:

**Bonnema Runke Stern Inc.**

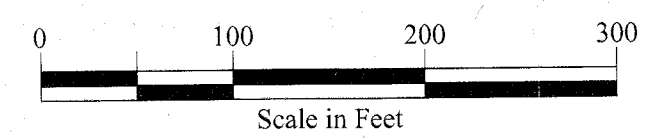
Professional Land Surveyors

4566 Hwy 71 NE - Suite 1

Willmar, MN 56201

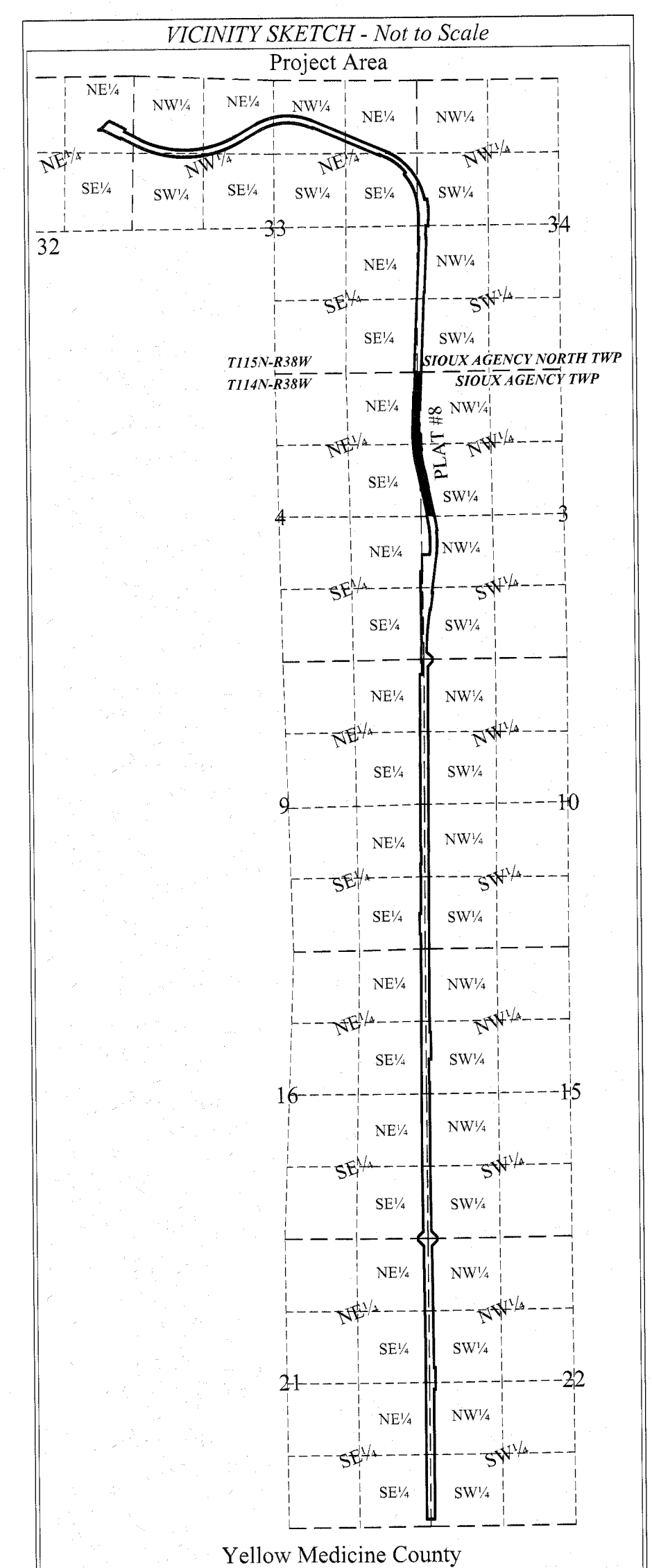
Office (320) 231-2844 Fax (320) 231-2827

Requested by: **Yellow Medicine Highway Department**  
1320 13th Street  
Granite Falls, MN



### LEGEND

- Found Iron Monument from former survey
- Bonnema Runke Stern Placed Capped Iron Monument
- Cast Iron Monument
- Existing Right-of-Way
- Existing Highway Centerline
- Highway Right-of-Way Plat Parcel Boundary
- Sixteenth Section Lines
- Section Lines / Quarter Section Lines
- Adjacent Parcels
- Adjacent Plats
- Change of Direction



### Notes:

- County State Aid Highway No. 21 was formerly known as State Highway 67.
- Centerline was provided by the Minnesota Department of Transportation and field verified by Bonnema Runke Stern Inc. in the fall of 2023.
- Parcel boundaries represent the existing right-of-way as determined by MnDOT strip maps, highway road orders, and highway easements.

### Bearing Notice:

The bearing orientation system for this plat is based on the Minnesota Department of Transportation Coordinate System NAD83 for Yellow Medicine County (2011 Adjustment), which has determined the north line of the Northwest Quarter of Section 3 to have a bearing of S 89°16'43"W.

### YELLOW MEDICINE COUNTY ENGINEER

The Yellow Medicine County Engineer is hereby designating the definite location of Yellow Medicine County State Aid Highway No. 21. The portion of said Highway as shown on this plat, is hereby certified as the official plat pursuant to Minnesota Statutes Chapter 160.085 and Chapter 160.14, Subdivision 1.

Certified: Jeffrey Glibo, P.E. License No. 58376  
Yellow Medicine County Engineer

### LAND SURVEYOR

I hereby certify that this plat was prepared by me or under my direct supervision and is a correct representation of said survey; that all distances are horizontal ground distances in feet; that the difference between bearings represent plane angles in degrees, minutes and seconds; that the monuments to delineate this survey have been placed in the ground as shown on the plat; and right-of-way boundary lines are correctly designated on this plat.

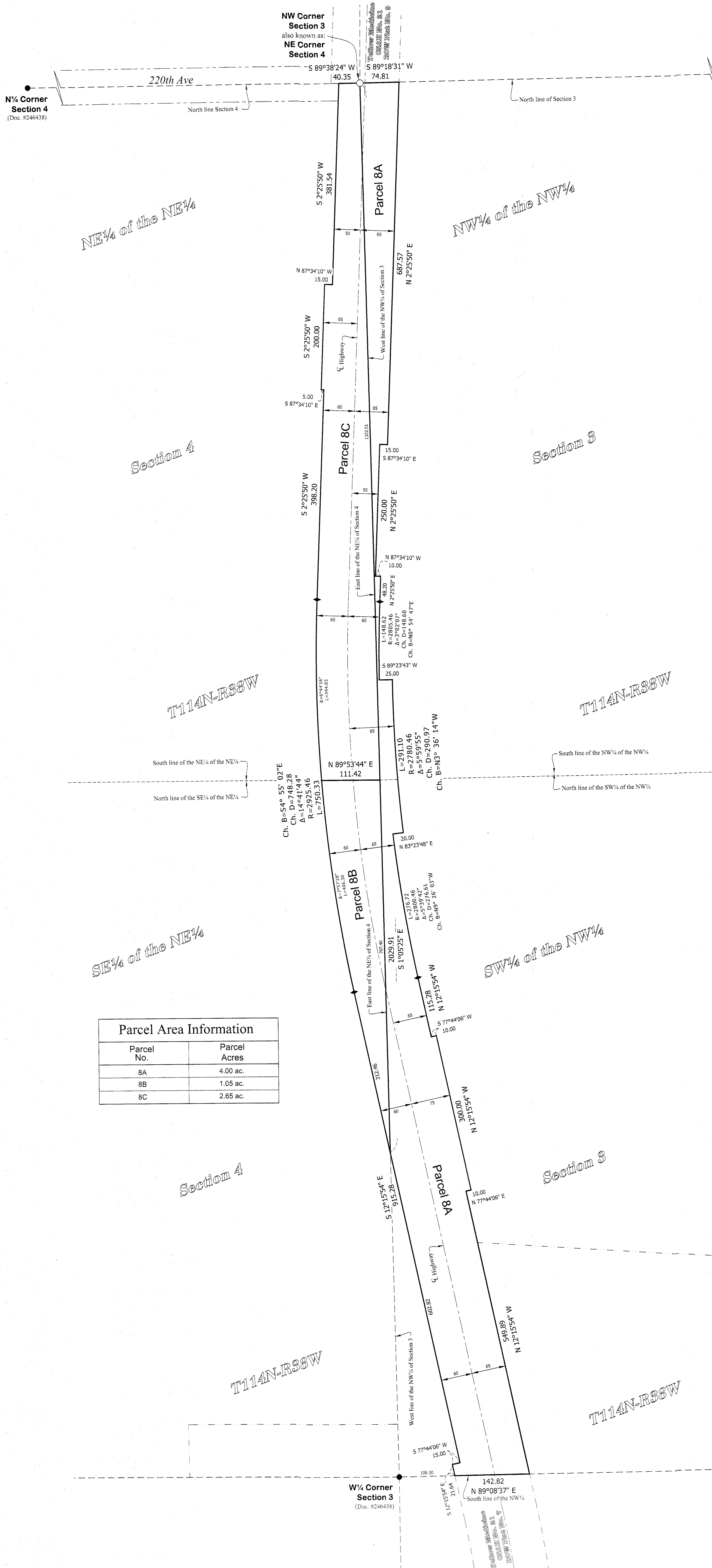
Certified: Joshua M. Stern License No. 46169

### YELLOW MEDICINE COUNTY RECORDER

OFFICE OF THE COUNTY RECORDER - YELLOW MEDICINE COUNTY - MINNESOTA

I hereby certify that this instrument was filed in the office of the County Recorder for record on this 23 day of April, 2025 at 1:00 o'clock P.m. and recorded in Folder No. 125-A, and Document No. 234157.

Certified: Carol D.  
Yellow Medicine County Recorder



Parcel Area Information	
Parcel No.	Parcel Acres
8A	4.00 ac.
8B	1.05 ac.
8C	2.65 ac.